

V&V Reference Report

L2 ASCDS Version : 7.6.7.2

Observation 4628 - L2 Version 001
Chandra X-Ray Center

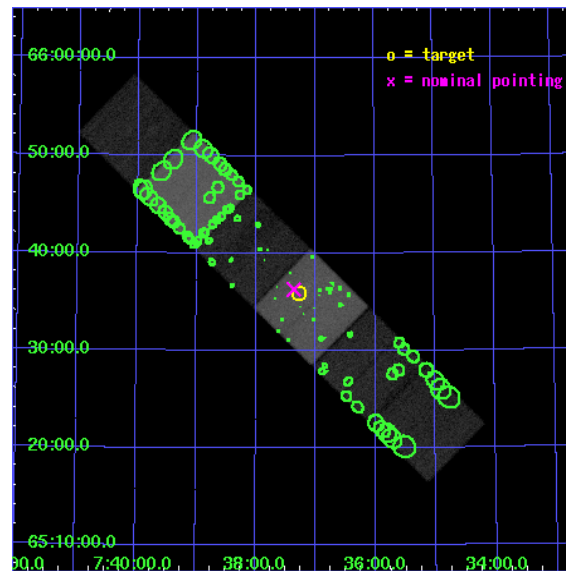
L2 Processing Date : Apr 25 2006

Contents

1	Front	2
2	OBI	3
2.1	OBI	3
2.1.1	Images	3
2.1.2	Bias	3
2.1.3	Parameters	4
2.1.4	Events	4
2.2	Compared Parameters	5
2.3	Aspect	6
2.4	Star Slots	9
2.4.1	Slot 3	9
2.4.2	Slot 4	10
2.4.3	Slot 5	11
2.4.4	Slot 6	12
2.4.5	Slot 7	13
2.5	FID Slots	14
2.5.1	Slot 0	14
2.5.2	Slot 1	15
2.5.3	Slot 2	16
3	Point Sources	17
A	Summary	18
A.1	Status	18
A.2	Comments	18

1 Front

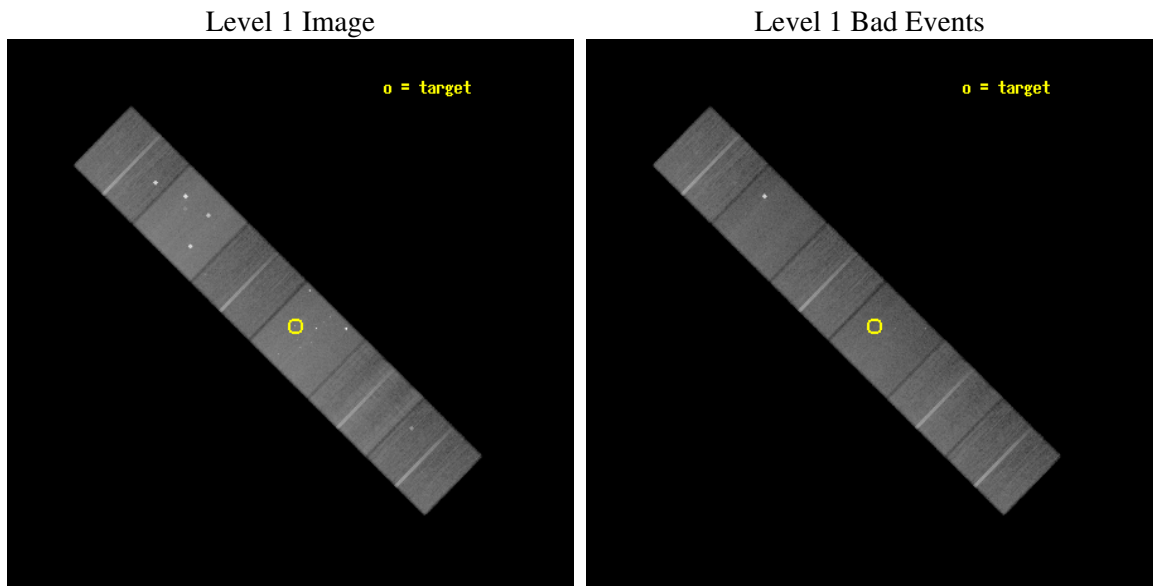
seq_num	500453
obs_id	4628
title	Prompt Chandra Observations of Nearby Supernovae
observer	Prof. Walter Lewin
object	SN 2004dj
dtcycle	0
cycle	P
ra_targ	114.32125
dec_targ	65.599528
ra_nom	114.34051567071
dec_nom	65.604986792634
roll_nom	44.49660982628
revision	2
ontime	47119.999824464
livetime	46523.338014429
ontime4	47119.999824464
ontime5	47119.999824464
ontime6	47119.999824464
ontime7	47119.999824464
ontime8	47119.999824464
ontime9	47119.999824464
l2events	545696



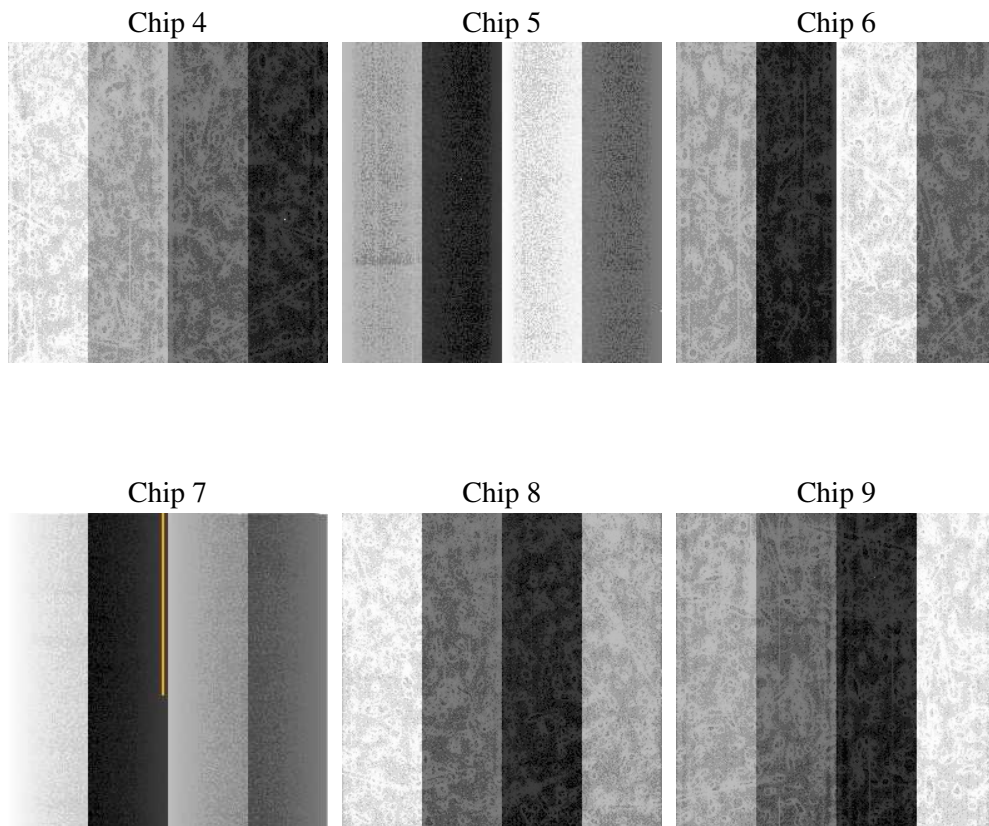
2 OBI

2.1 OBI

2.1.1 Images



2.1.2 Bias



2.1.3 Parameters

obi_num	0
ascdsver	7.6.7.2
caldsver	3.2.1
date	2006-04-25T04:36:32
revision	2

sched_exp_time	47000.000000
ontime	48802.992593735
ontime4	48802.992563814
ontime5	48802.992563814
ontime6	48802.992563814
ontime7	48802.992593735
ontime8	48802.992563814
ontime9	48802.992563814
l1events	2641401

2.1.4 Events

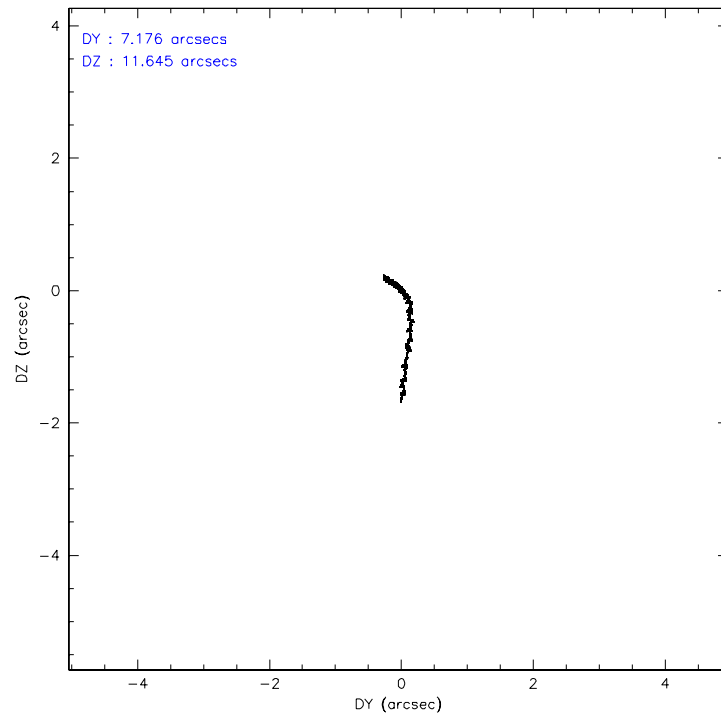
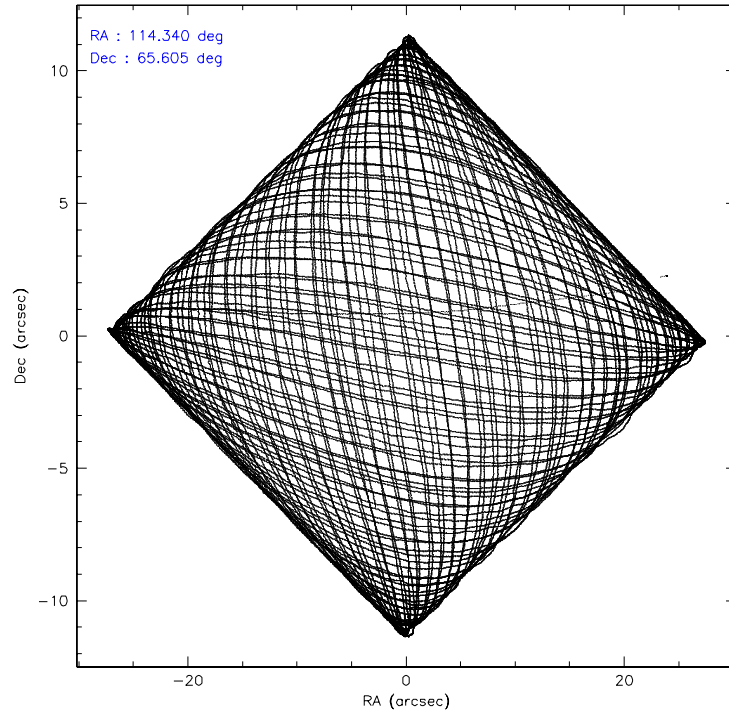
	ccd 4	ccd 5	ccd 6	ccd 7	ccd 8	ccd 9
level 1 events	409847	553971	366027	500040	453383	358133
rejected events	355713	316903	325395	306928	360682	315108
rejected %	86%	57%	88%	61%	79%	87%

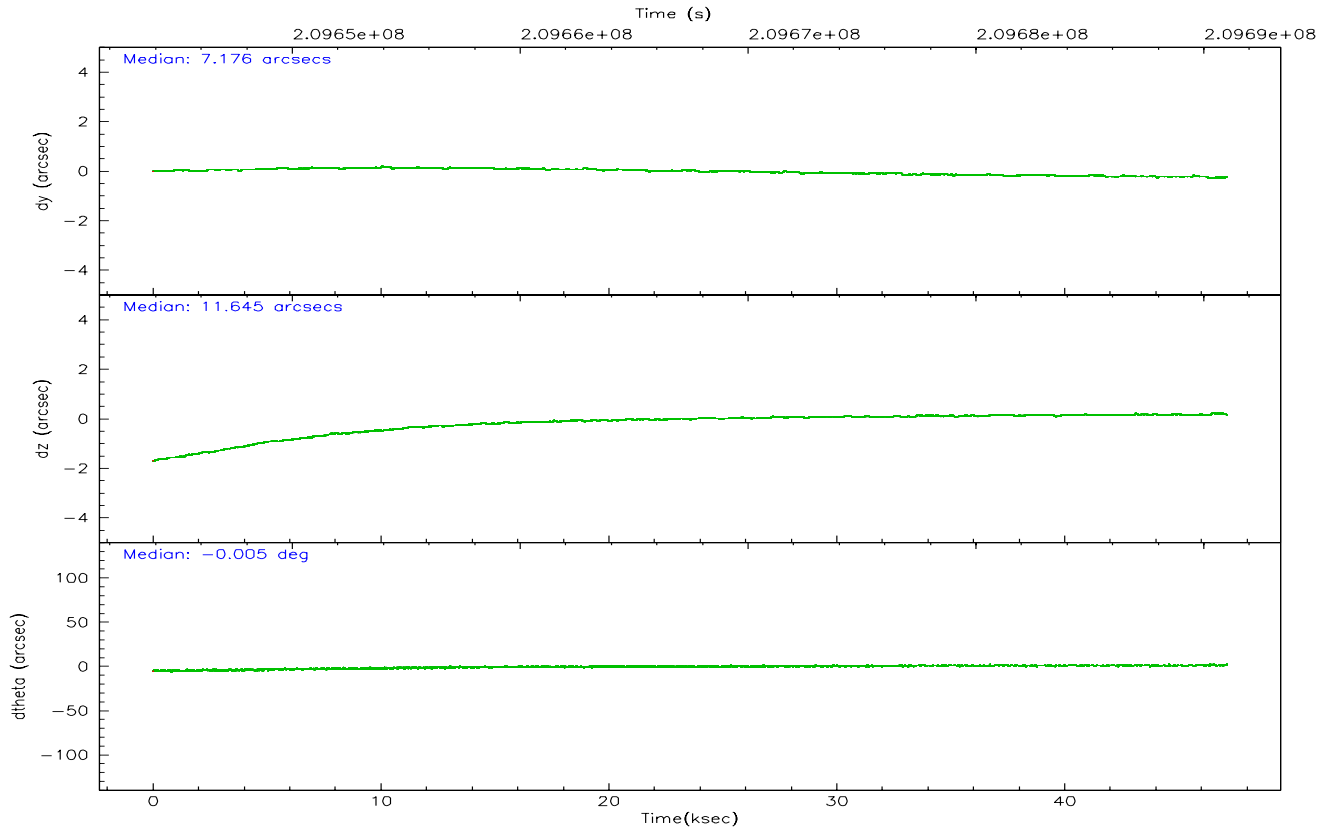
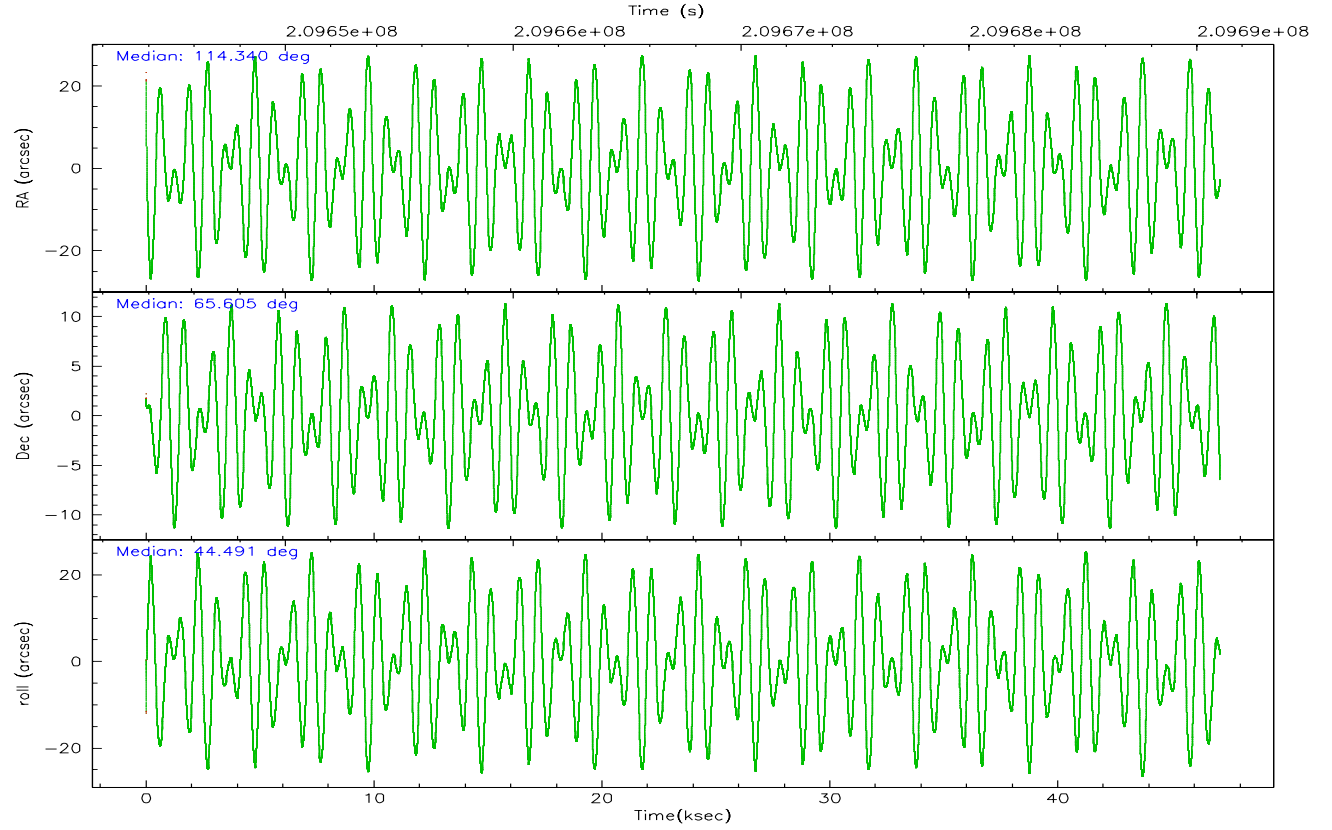
	ccd 4	ccd 5	ccd 6	ccd 7	ccd 8	ccd 9
grade 0 events	31146	28243	16627	14563	30051	19116
	7%	5%	4%	2%	6%	5%
grade 1 events	444	11033	178	304	330	243
	0%	1%	0%	0%	0%	0%
grade 2 events	9018	74161	8602	50082	21113	8377
	2%	13%	2%	10%	4%	2%
grade 3 events	4632	4975	4224	10861	10299	4356
	1%	0%	1%	2%	2%	1%
grade 4 events	4329	4782	4069	10636	9647	4130
	1%	0%	1%	2%	2%	1%
grade 5 events	15615	25417	16444	31473	21465	17306
	3%	4%	4%	6%	4%	4%
grade 6 events	6900	133704	8541	113412	25170	8543
	1%	24%	2%	22%	5%	2%
grade 7 events	337763	271656	307342	268709	335308	296062
	82%	49%	83%	53%	73%	82%

2.2 Compared Parameters

Parameter	Planned	Actual	Parameter	Planned	Actual
Instrument	ACIS	ACIS	Obspar format version number	6	6
Detector	ACIS-456789	ACIS-456789	Obspar file type	PREDICTED	ACTUAL
Grating	NONE	NONE	Obspar update status	NONE	UPDATED
Data mode	FAINT	FAINT	On-chip summing requested	N	N
Observation mode	POINTING	POINTING	Subarray requested	NONE	NONE
Pointing RA	114.323831	114.3405156707084	Alternating exposures requested	N	N
Pointing Dec	65.578653	65.60498679263353	Primary exposure time	0.000000	3.2
Pointing Roll	44.355173	44.49660982627979			
SIM focus pos (mm)	-0.684267	-0.6828225247311905			
SIM defocus (mm)	0	0.001444936568705701			
SIM translation stage pos (mm)	-190.132523	-190.1400660498719			
SIM translation stage offset (mm)	0	0.00754346686406393			
Observation start time	209644017.184000	209642134.1315			
Observation start date	2004-08-23T10:25:53	2004-08-23T09:55:34			
Observation end time	209691017.184000	209692281.74624			
Observation end date	2004-08-23T23:29:13	2004-08-23T23:51:21			
Read mode	TIMED	TIMED			

2.3 Aspect



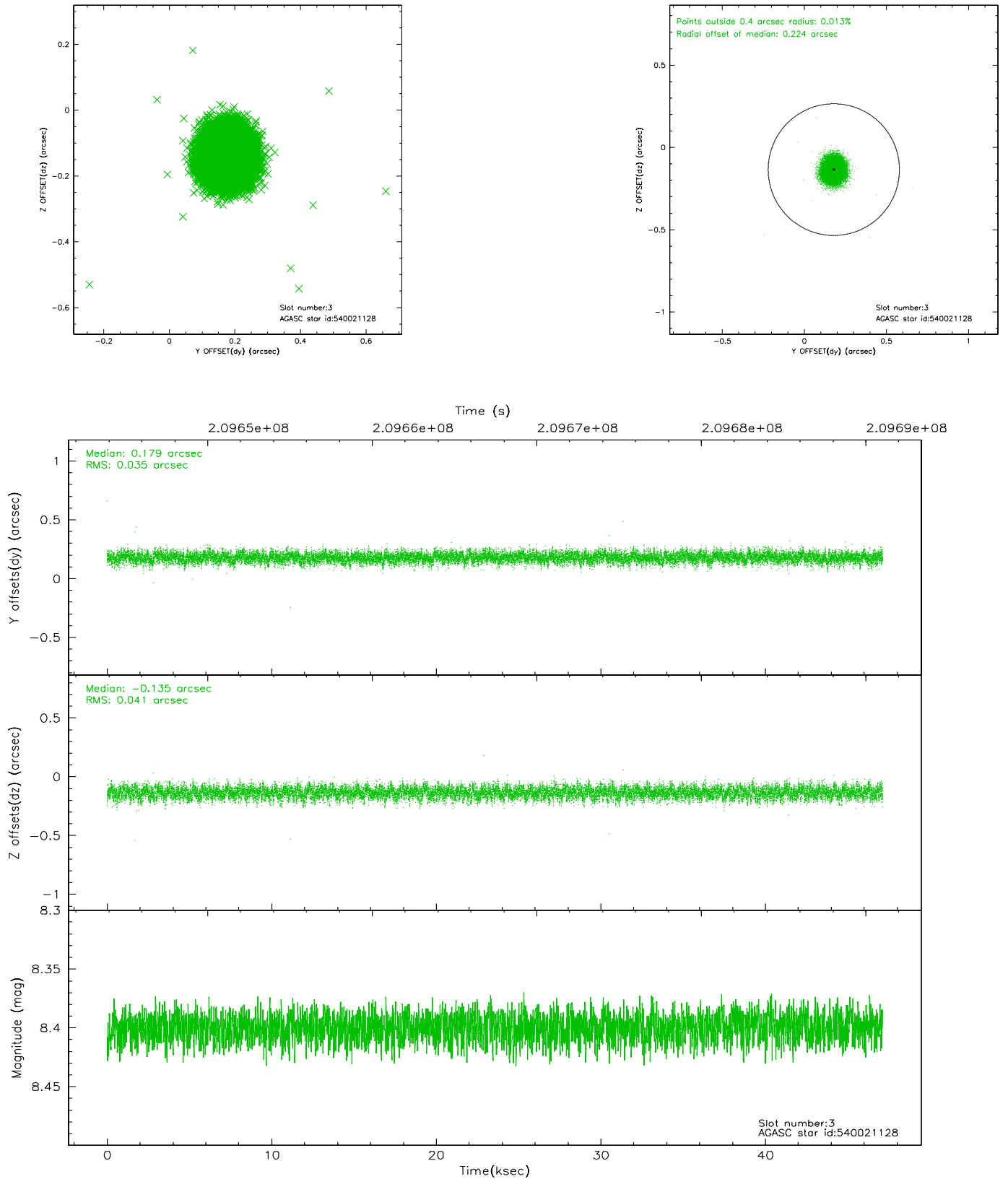


Slot Statistics

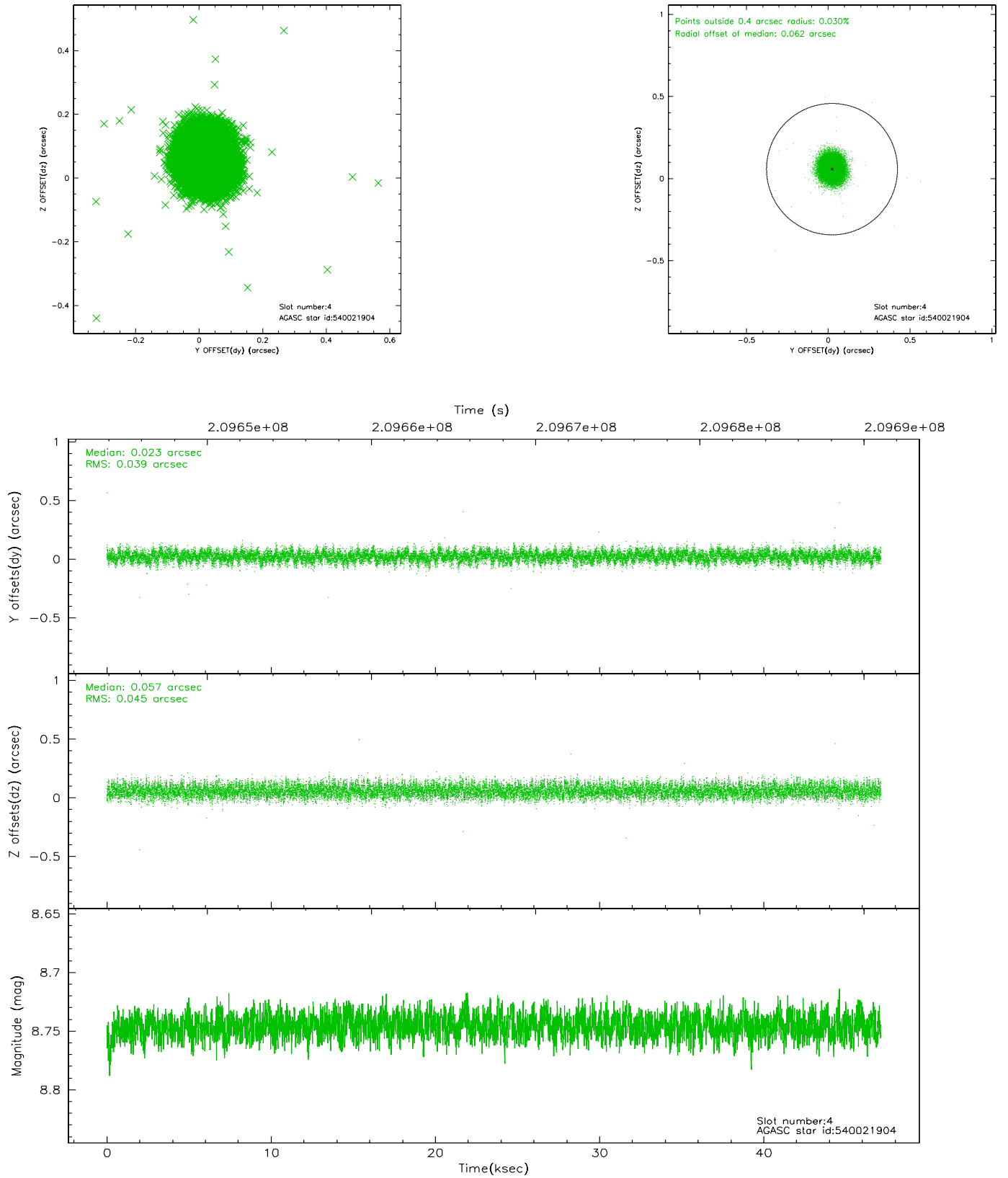
slot	status	id	mag	n_pts	med_dy	med_dz	dr1	dr2	ra	dec	mean_y	mean_z
0	FID	ACIS-S-1	7.18	11496	0.031	-0.059	0.009	0.041	0.000000	0.000000	936.13	-1728.42
1	FID	ACIS-S-5	7.24	11493	-0.019	0.030	0.010	0.021	0.000000	0.000000	-1812.89	169.26
2	FID	ACIS-S-6	7.34	11496	-0.036	0.041	0.013	0.036	0.000000	0.000000	401.67	813.19
3	GUIDE	540021128	8.40	22987	0.179	-0.135	0.057	0.091	114.291258	65.330448	-659.04	-604.87
4	GUIDE	540021904	8.75	22979	0.023	0.057	0.063	0.101	114.203372	65.242134	-976.23	-739.20
5	GUIDE	540152256	7.77	22990	-0.186	0.196	0.061	0.101	116.023663	65.438119	1489.31	-2114.98
6	GUIDE	540548768	8.50	22986	0.048	-0.051	0.065	0.104	113.788166	65.673634	-326.57	802.03
7	GUIDE	540541056	8.93	22978	-0.068	-0.068	0.061	0.100	114.633382	66.183962	1845.99	1244.45

2.4 Star Slots

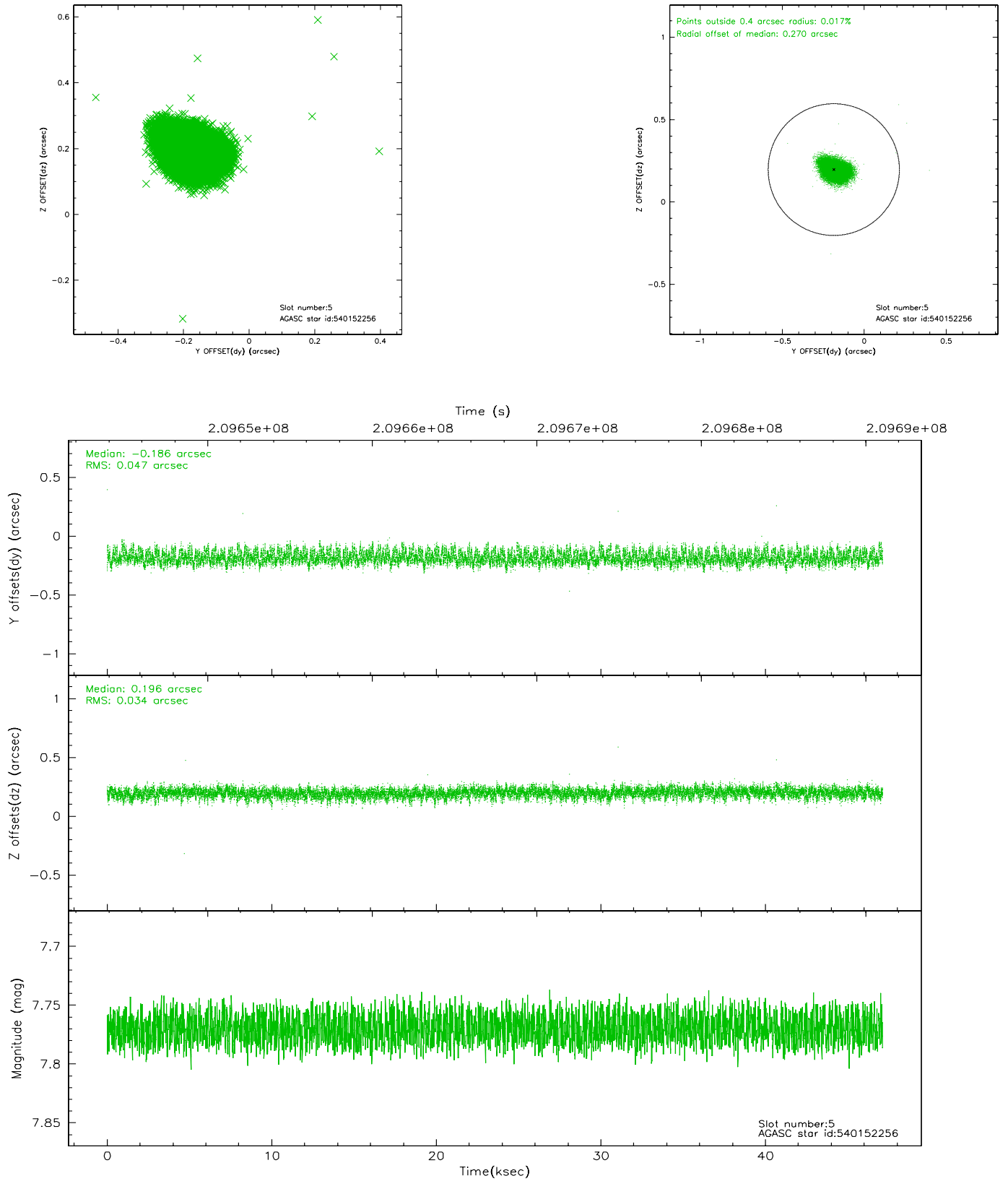
2.4.1 Slot 3



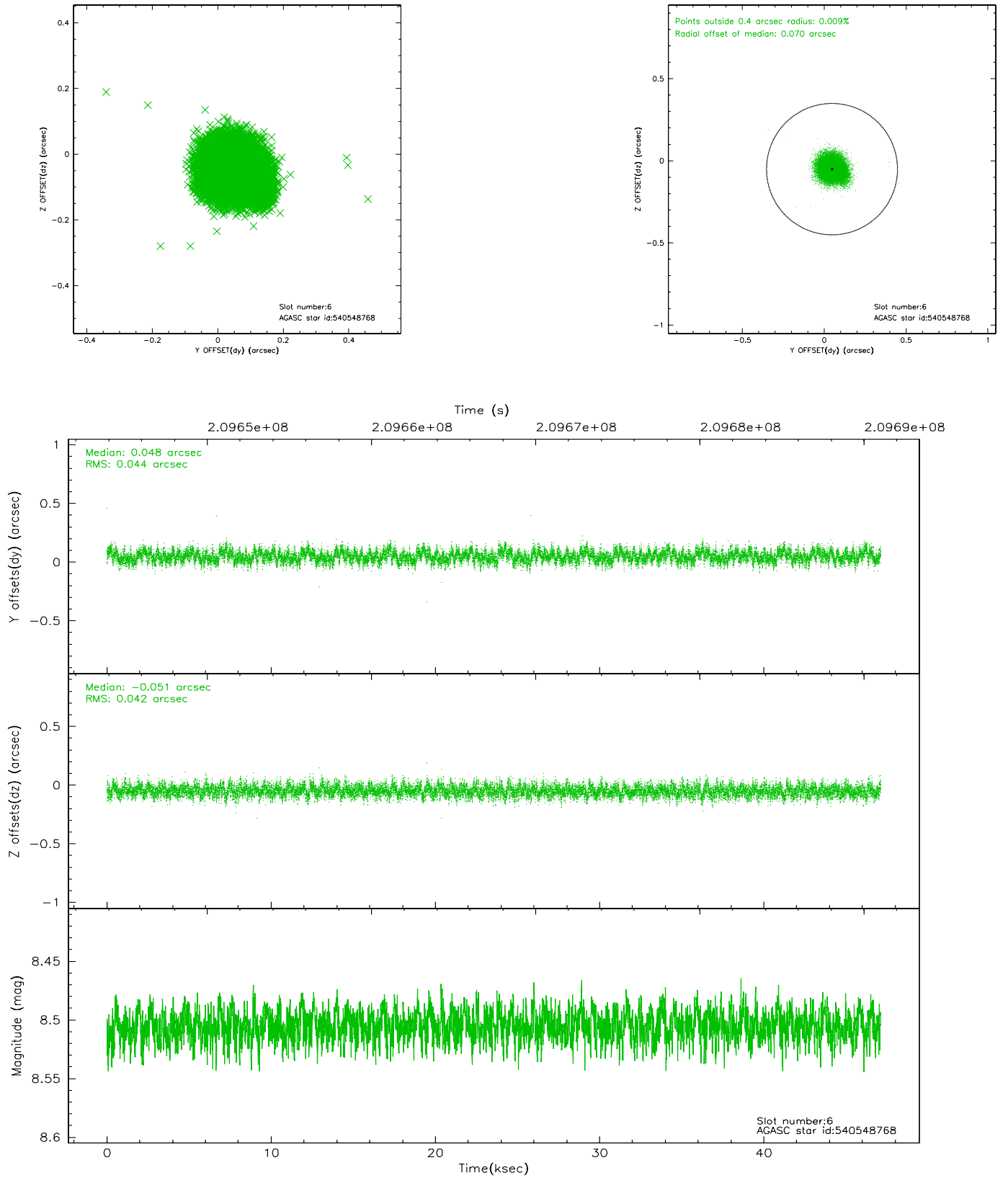
2.4.2 Slot 4



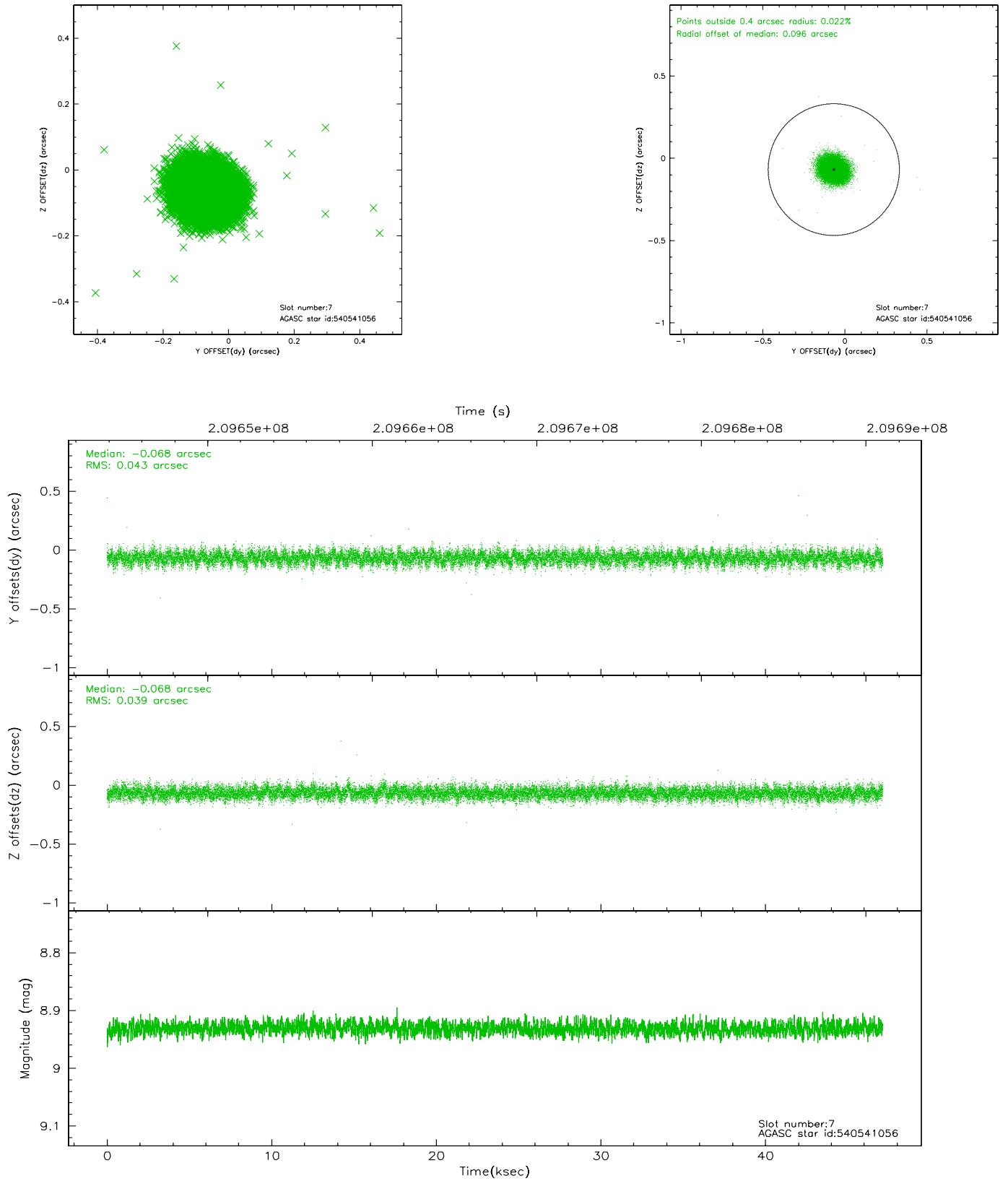
2.4.3 Slot 5



2.4.4 Slot 6

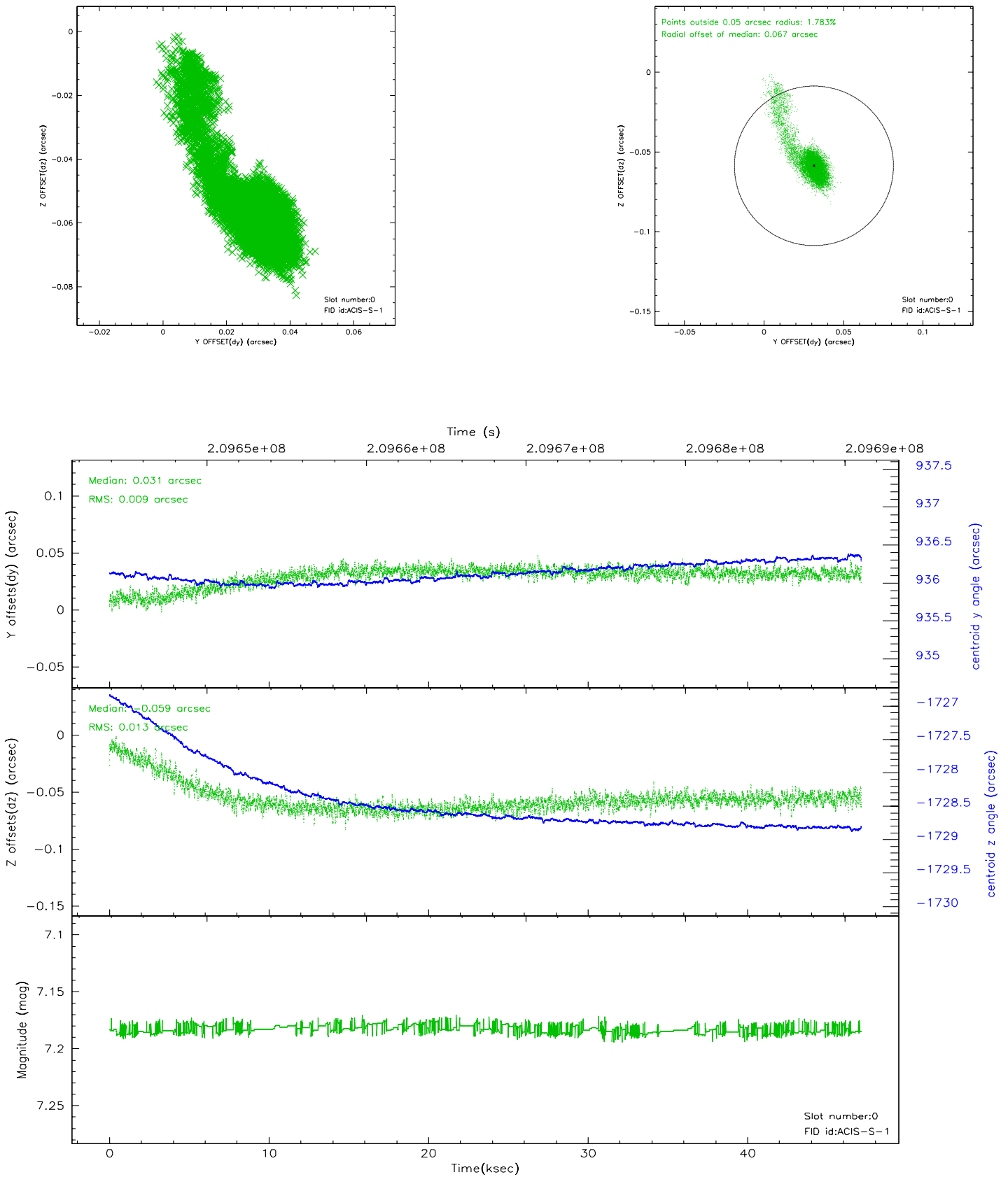


2.4.5 Slot 7

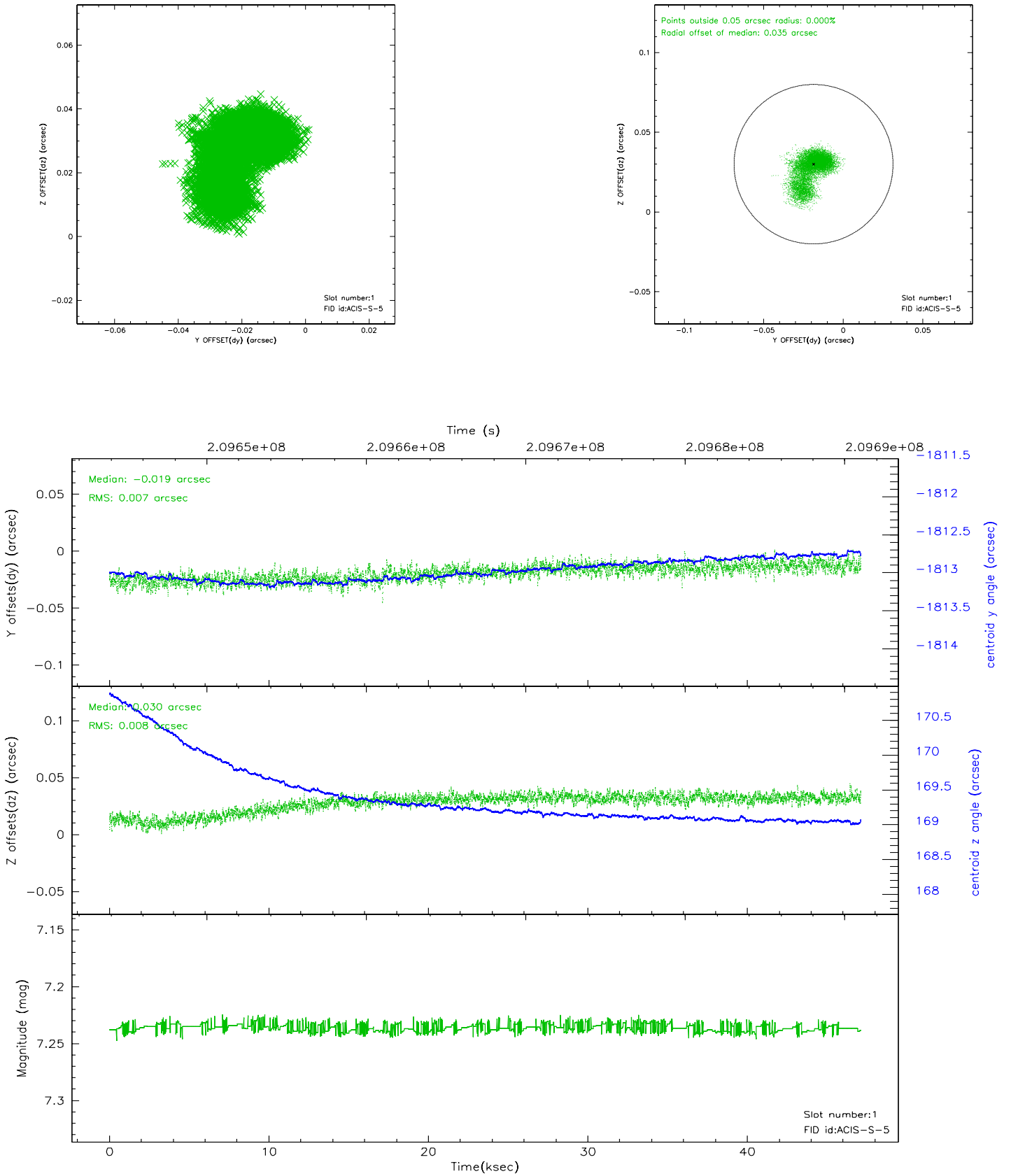


2.5 FID Slots

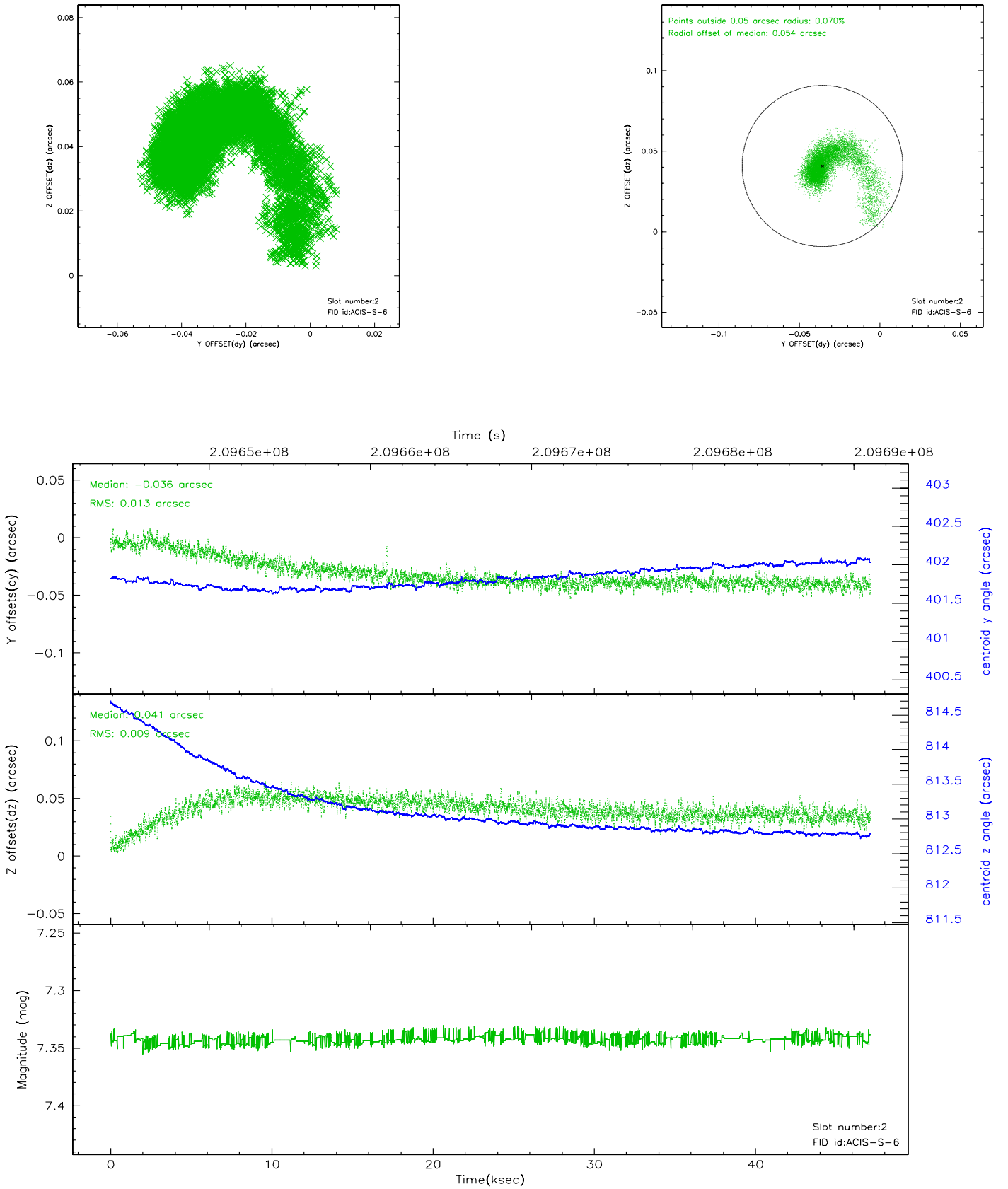
2.5.1 Slot 0



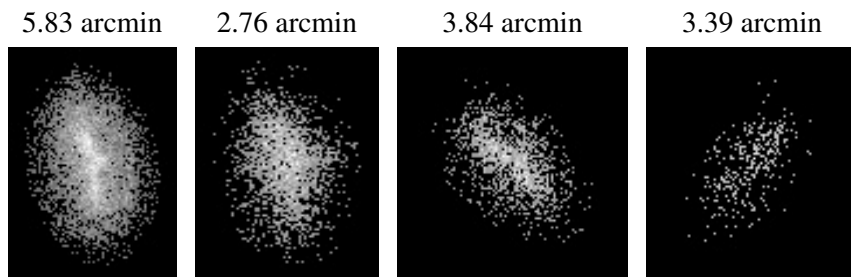
2.5.2 Slot 1



2.5.3 Slot 2



3 Point Sources



A Summary

A.1 Status

V&V Scientist	Beth Sundheim
V&V Date (YYYY-MM-DD)	2006.04.25
V&V Edition	1
V&V Disposition and Status	OK
V&V Charge Time	47.119

A.2 Comments