

V&V Reference Report

L2 ASCDS Version : 7.6.7.2

Observation 4611 - L2 Version 001
Chandra X-Ray Center

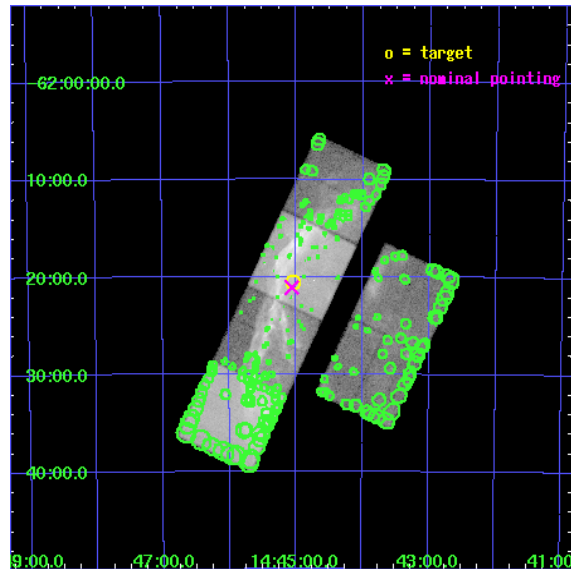
L2 Processing Date : May 2 2006

Contents

1	Front	2
2	OBI	3
2.1	OBI	3
2.1.1	Images	3
2.1.2	Bias	3
2.1.3	Parameters	4
2.1.4	Events	4
2.2	Compared Parameters	5
2.3	Aspect	6
2.4	Star Slots	9
2.4.1	Slot 3	9
2.4.2	Slot 4	10
2.4.3	Slot 5	11
2.4.4	Slot 6	12
2.4.5	Slot 7	13
2.5	FID Slots	14
2.5.1	Slot 0	14
2.5.2	Slot 1	15
2.5.3	Slot 2	16
3	Point Sources	17
A	Summary	18
A.1	Status	18
A.2	Comments	18

1 Front

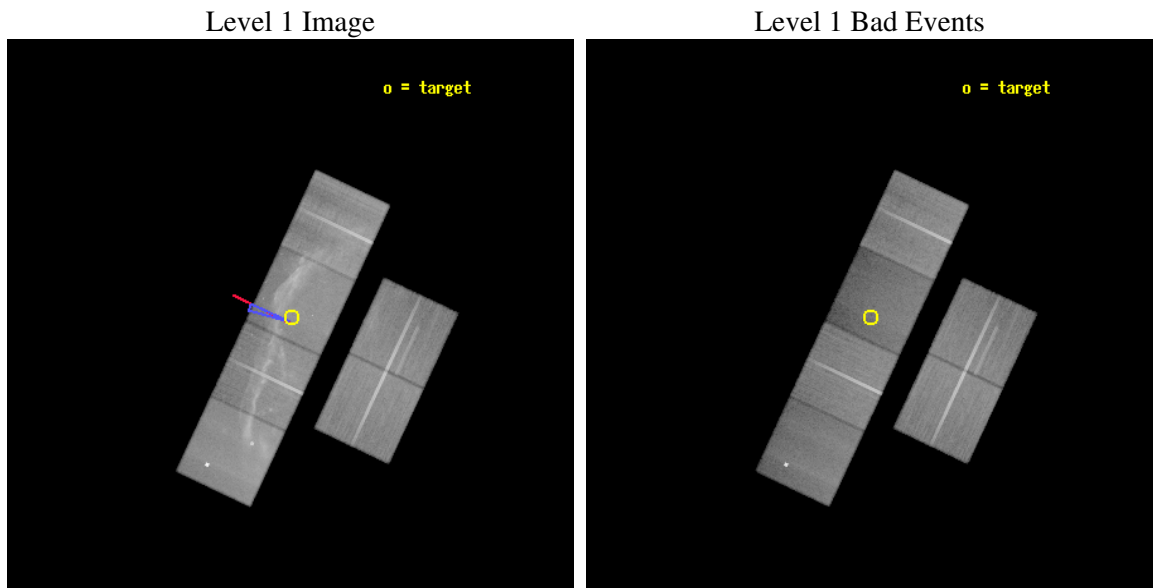
seq_num	500436
obs_id	4611
title	Completing our understanding of RCW 86 with Chandra imaging and XMM-Newton high resolution spectroscopy
observer	Dr. Jacco Vink
object	RCW 86 NE
dtcycle	0
cycle	P
ra_targ	221.259583
dec_targ	-62.342222
ra_nom	221.26498542112
dec_nom	-62.351544256257
roll_nom	295.16140891906
revision	3
ontime	72585.558759302
livetime	71666.436708515
ontime2	72575.835808635
ontime3	72582.317759126
ontime5	72585.558759302
ontime6	72582.31776914
ontime7	72585.558759302
ontime8	72575.835967988
l2events	960191



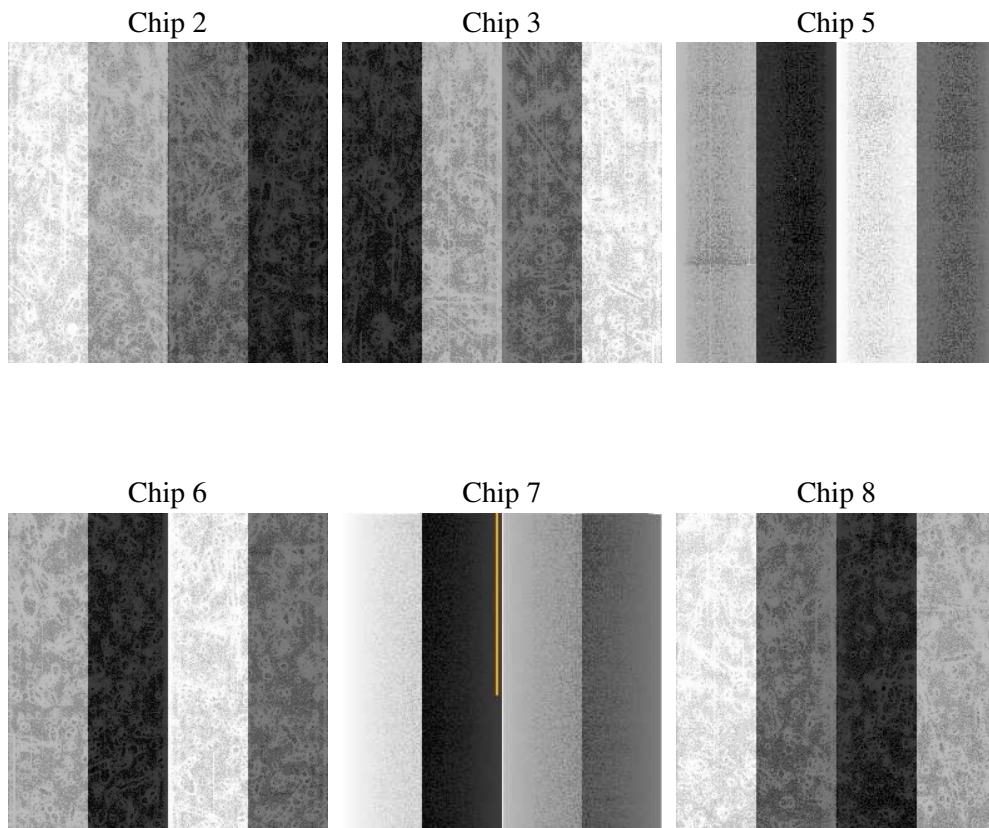
2 OBI

2.1 OBI

2.1.1 Images



2.1.2 Bias



2.1.3 Parameters

obi_num	0
ascdsver	7.6.7.2
caldsver	3.2.1
date	2006-05-02T14:14:22
revision	3

sched_exp_time	72632.000000
ontime	72591.999523282
ontime2	72579.035562515
ontime3	72588.758523107
ontime5	72591.999523282
ontime6	72588.75853312
ontime7	72591.999523282
ontime8	72582.27671206
l1events	3156988

2.1.4 Events

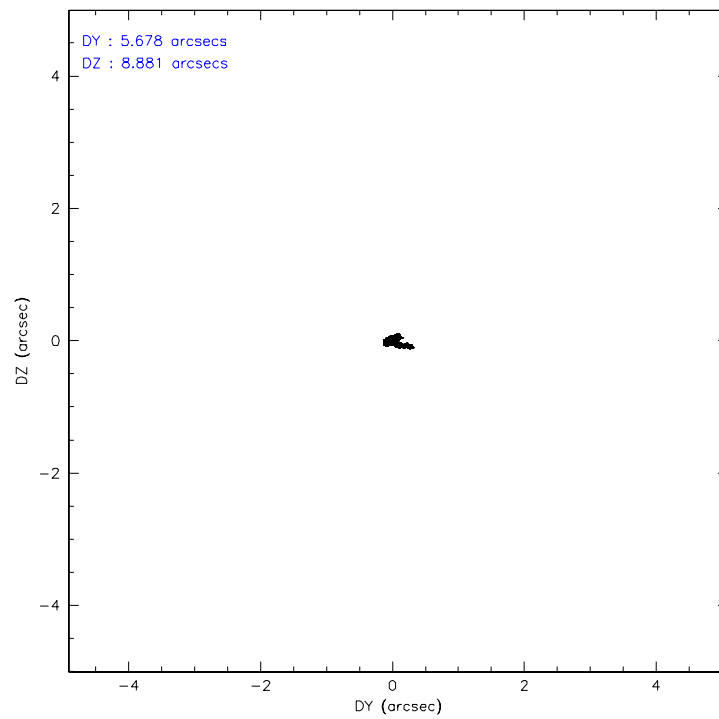
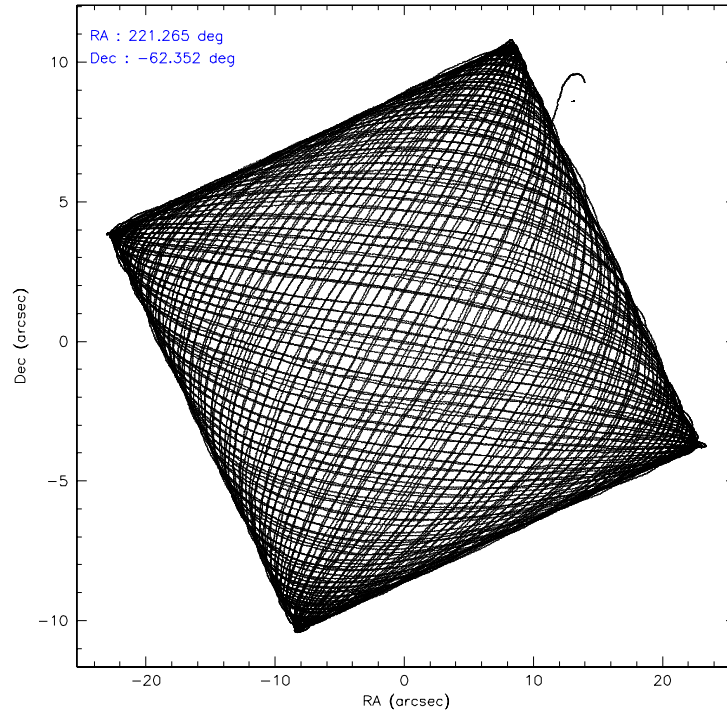
	ccd 2	ccd 3	ccd 5	ccd 6	ccd 7	ccd 8
level 1 events	481707	434258	575902	545788	552854	566479
rejected events	421644	371339	267504	388434	223751	404715
rejected %	87%	85%	46%	71%	40%	71%

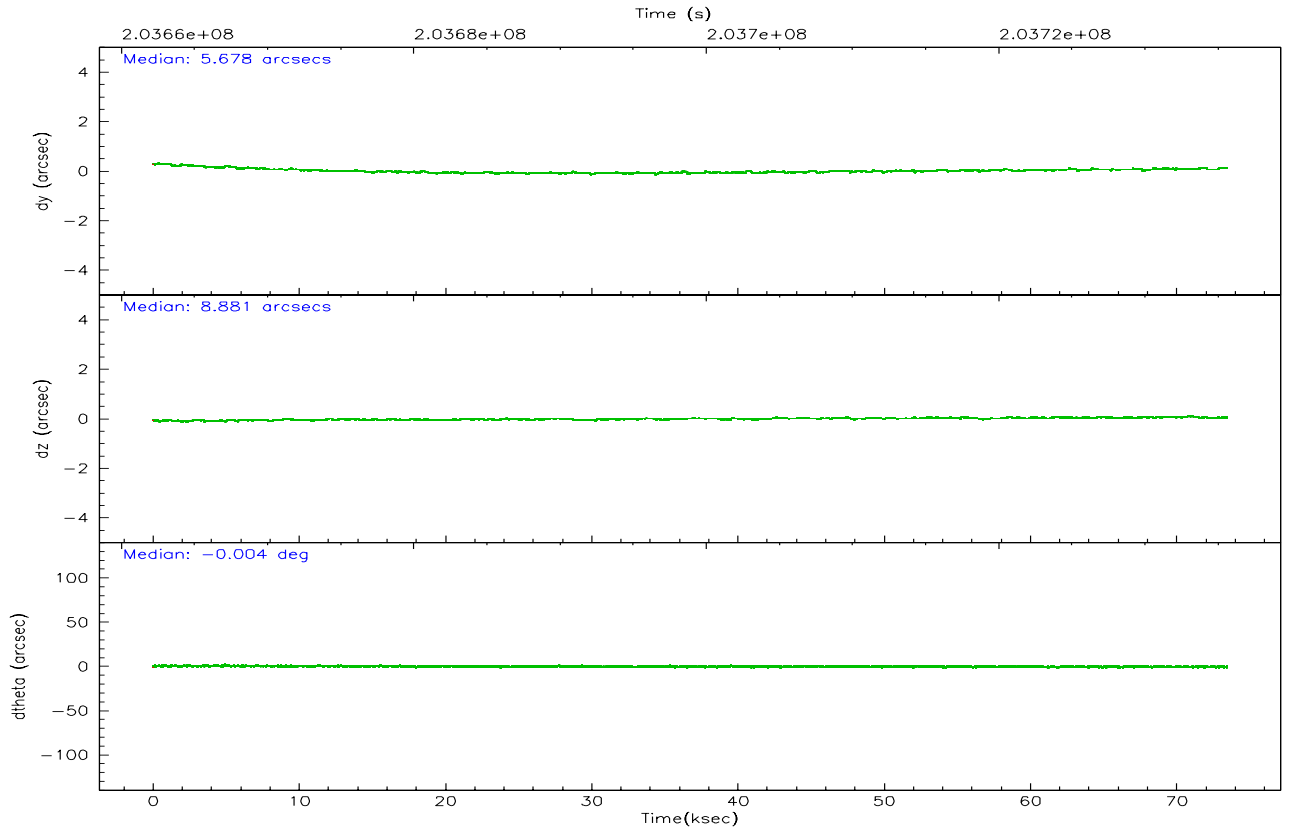
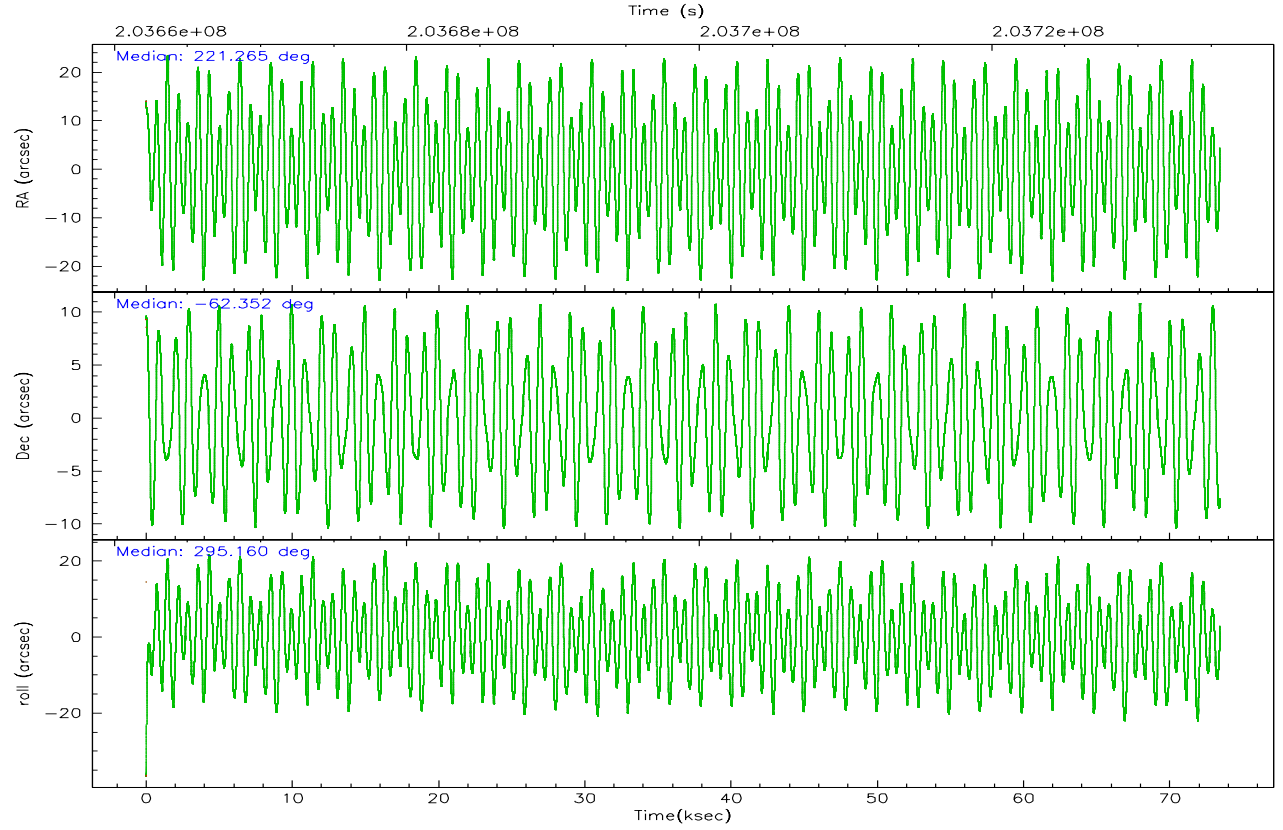
	ccd 2	ccd 3	ccd 5	ccd 6	ccd 7	ccd 8
grade 0 events	31463	34663	33758	116748	52490	69867
	6%	7%	5%	21%	9%	12%
grade 1 events	299	332	152	543	232	531
	0%	0%	0%	0%	0%	0%
grade 2 events	11427	10473	104280	17593	87034	31196
	2%	2%	18%	3%	15%	5%
grade 3 events	4891	5248	9123	6807	26649	14063
	1%	1%	1%	1%	4%	2%
grade 4 events	5080	5050	9036	6699	26141	13297
	1%	1%	1%	1%	4%	2%
grade 5 events	12390	14080	29143	14840	32570	21669
	2%	3%	5%	2%	5%	3%
grade 6 events	7207	7492	152234	9520	136814	33361
	1%	1%	26%	1%	24%	5%
grade 7 events	408950	356920	238176	373038	190924	382495
	84%	82%	41%	68%	34%	67%

2.2 Compared Parameters

Parameter	Planned	Actual	Parameter	Planned	Actual
Instrument	ACIS	ACIS	Obspar format version number	6	6
Detector	ACIS-235678	ACIS-235678	Obspar file type	PREDICTED	ACTUAL
Grating	NONE	NONE	Obspar update status	NONE	UPDATED
Data mode	VFAINT	VFAINT	On-chip summing requested	N	N
Observation mode	POINTING	POINTING	Subarray requested	NONE	NONE
Pointing RA	221.216404	221.2649854211183	Alternating exposures requested	N	N
Pointing Dec	-62.336292	-62.351544256257	Primary exposure time	0.000000	3.2
Pointing Roll	294.961761	295.1614089190599			
Roll angle	290.000000	290.000000			
Roll tolerance	5.000000	5.000000			
Roll constraint allows 180D rotation	N	N			
SIM focus pos (mm)	-0.684267	-0.6828225247311905			
SIM defocus (mm)	0	0.001444936568705701			
SIM translation stage pos (mm)	-190.132523	-190.1425803651734			
SIM translation stage offset (mm)	0	0.01005778216563158			
Observation start time	203662999.184000	203661718.57847			
Observation start date	2004-06-15T05:02:15	2004-06-15T04:41:58			
Observation end time	203735631.184000	203736547.68178			
Observation end date	2004-06-16T01:12:47	2004-06-16T01:29:07			
Read mode	TIMED	TIMED			

2.3 Aspect



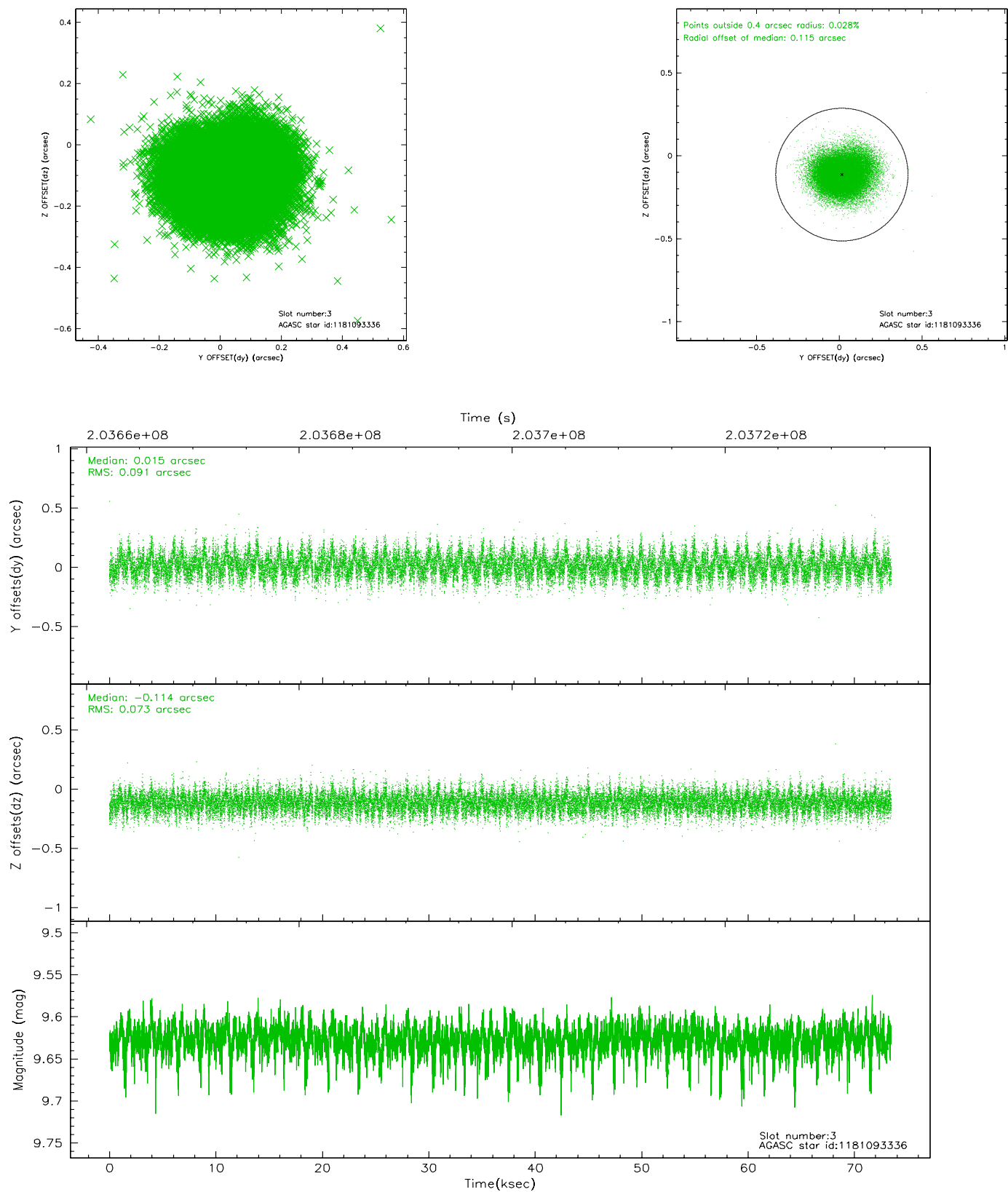


Slot Statistics

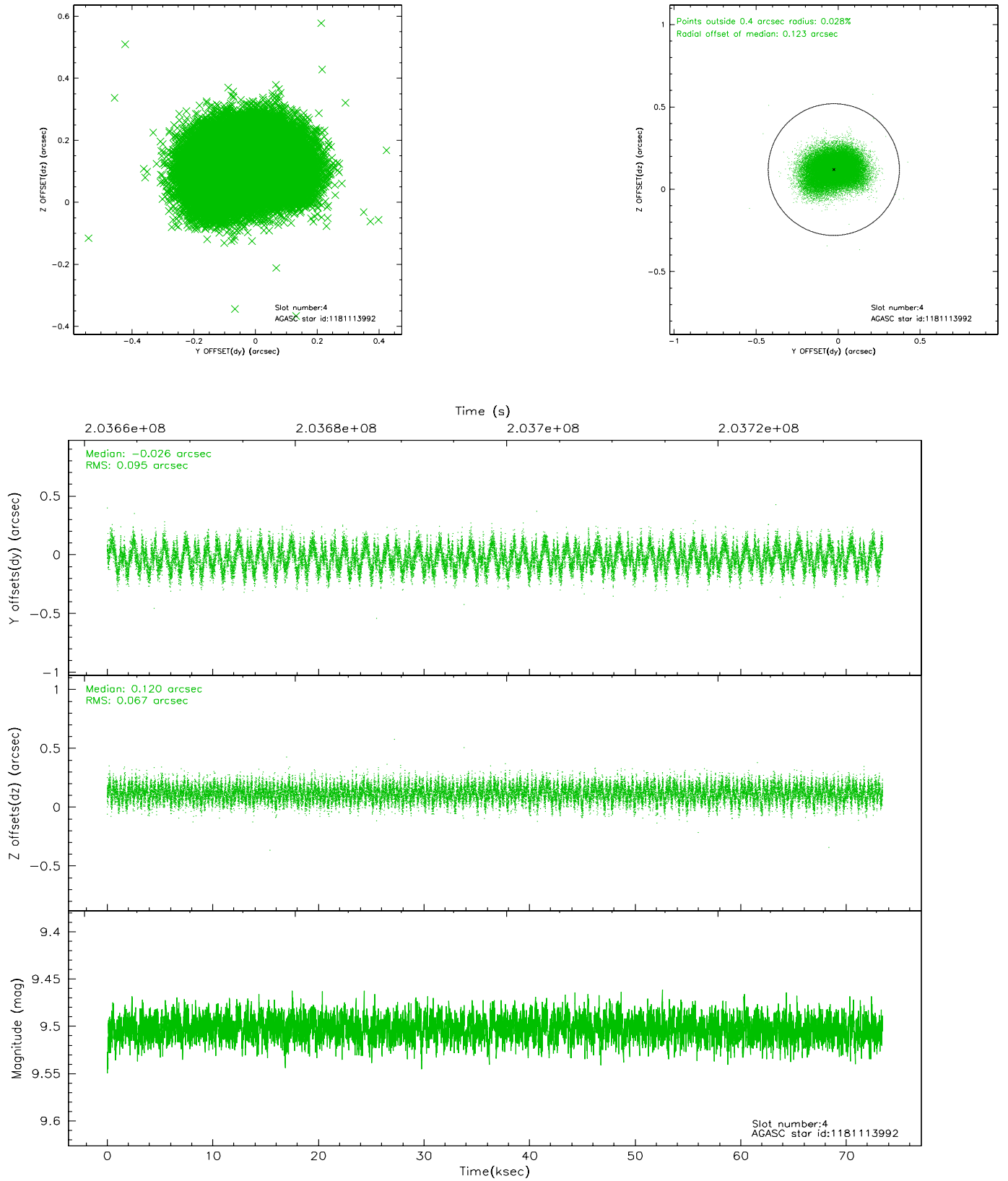
slot	status	id	mag	n_pts	med_dy	med_dz	dr1	dr2	ra	dec	mean_y	mean_z
0	FID	ACIS-S-1	7.18	17915	0.039	0.003	0.006	0.010	0.000000	0.000000	937.63	-1725.69
1	FID	ACIS-S-2	7.10	17914	-0.037	-0.029	0.008	0.012	0.000000	0.000000	-758.38	-1730.17
2	FID	ACIS-S-5	7.23	17914	-0.025	0.033	0.006	0.011	0.000000	0.000000	-1811.52	172.02
3	GUIDE	1181093336	9.63	35730	0.015	-0.114	0.124	0.203	220.776875	-63.106347	2213.65	-1819.75
4	GUIDE	1181113992	9.50	35796	-0.026	0.120	0.127	0.197	221.650516	-62.822918	1891.81	-92.89
5	GUIDE	1181131848	7.84	35821	0.048	0.018	0.062	0.100	222.504353	-62.330760	910.19	1951.45
6	GUIDE	1180581152	9.66	35604	-0.006	-0.024	0.126	0.197	221.180675	-61.731640	-1998.98	863.61
7	GUIDE	1180584160	9.56	35788	-0.030	0.004	0.113	0.178	221.205741	-61.754749	-1905.60	867.14

2.4 Star Slots

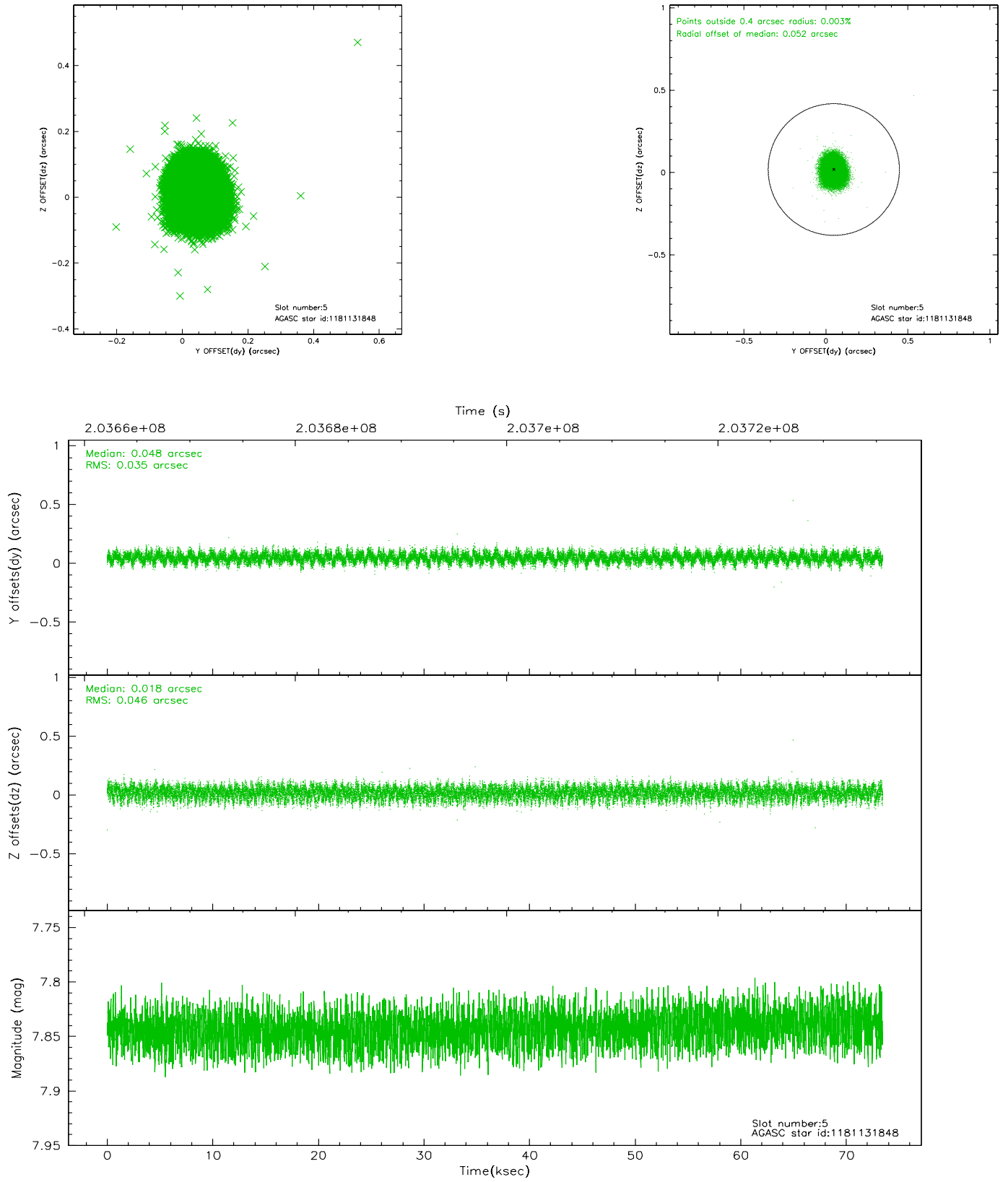
2.4.1 Slot 3



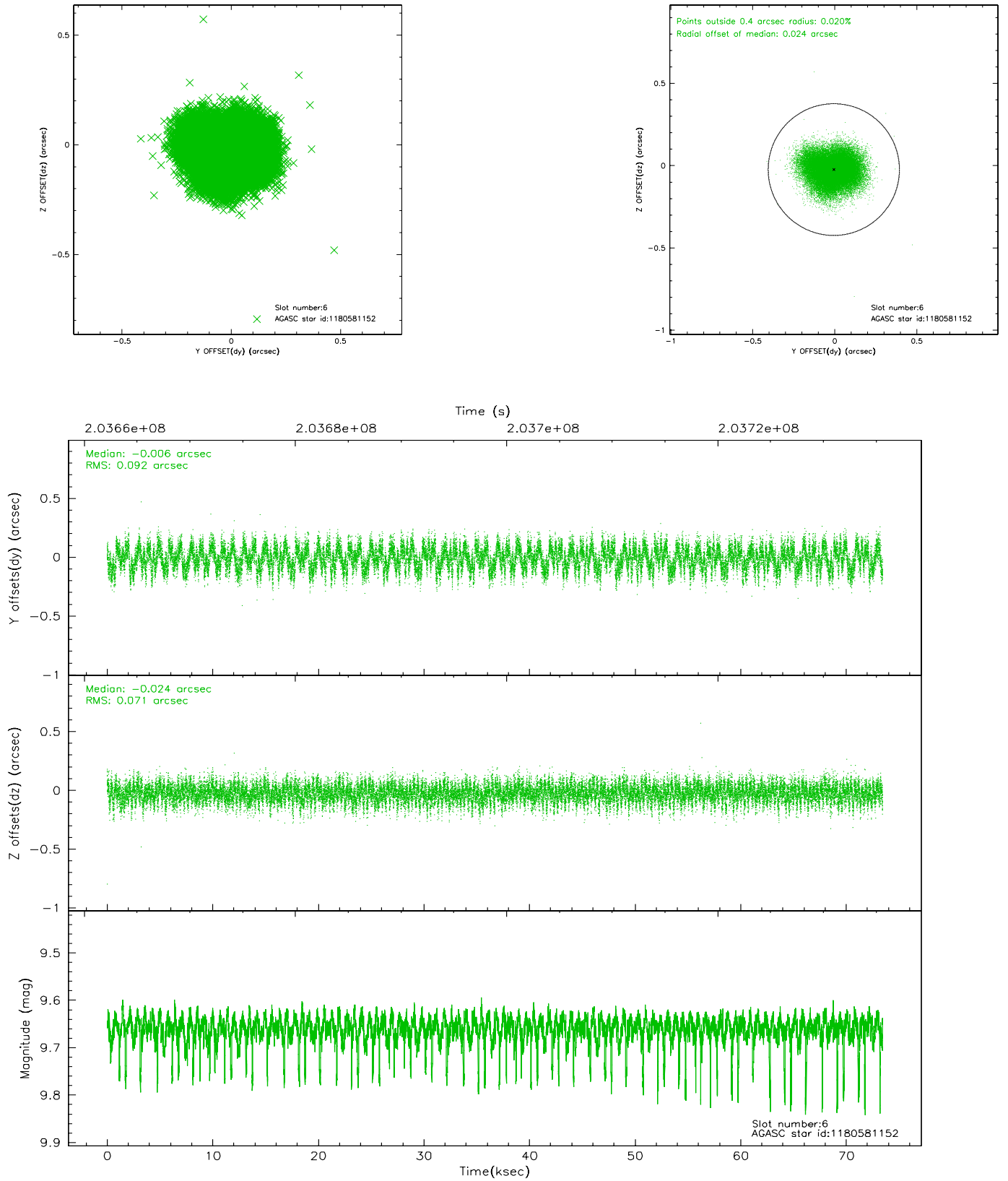
2.4.2 Slot 4



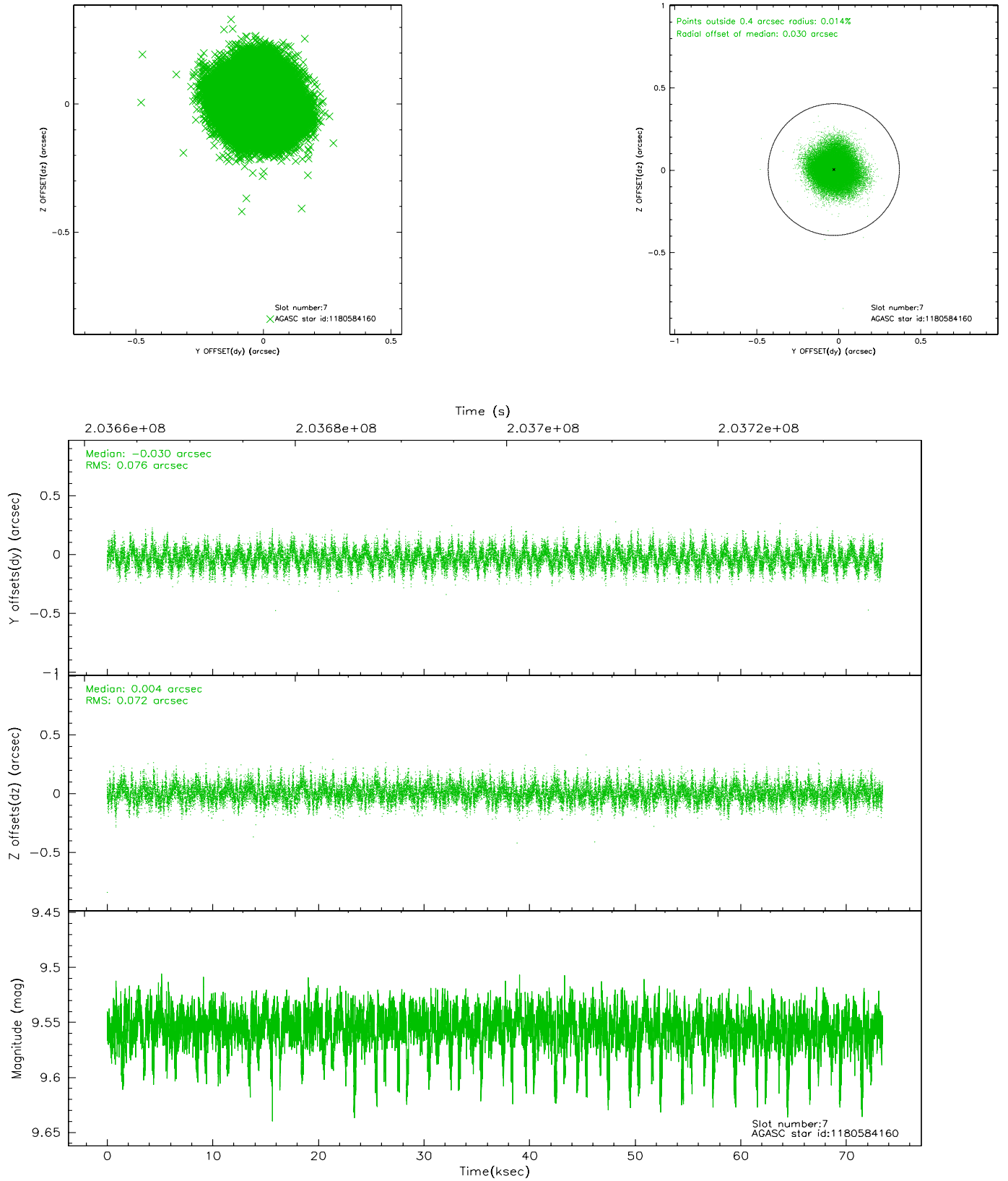
2.4.3 Slot 5



2.4.4 Slot 6

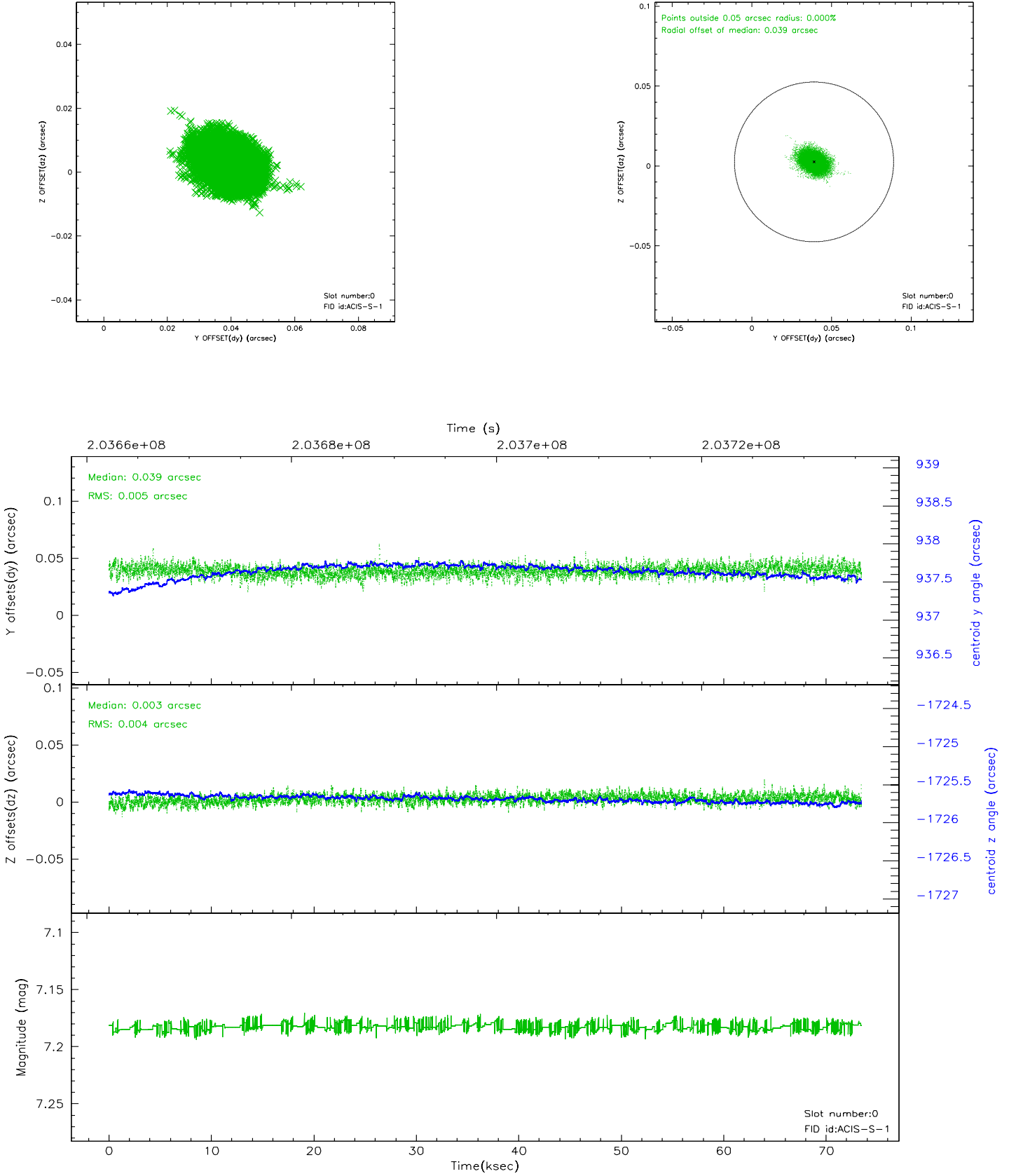


2.4.5 Slot 7

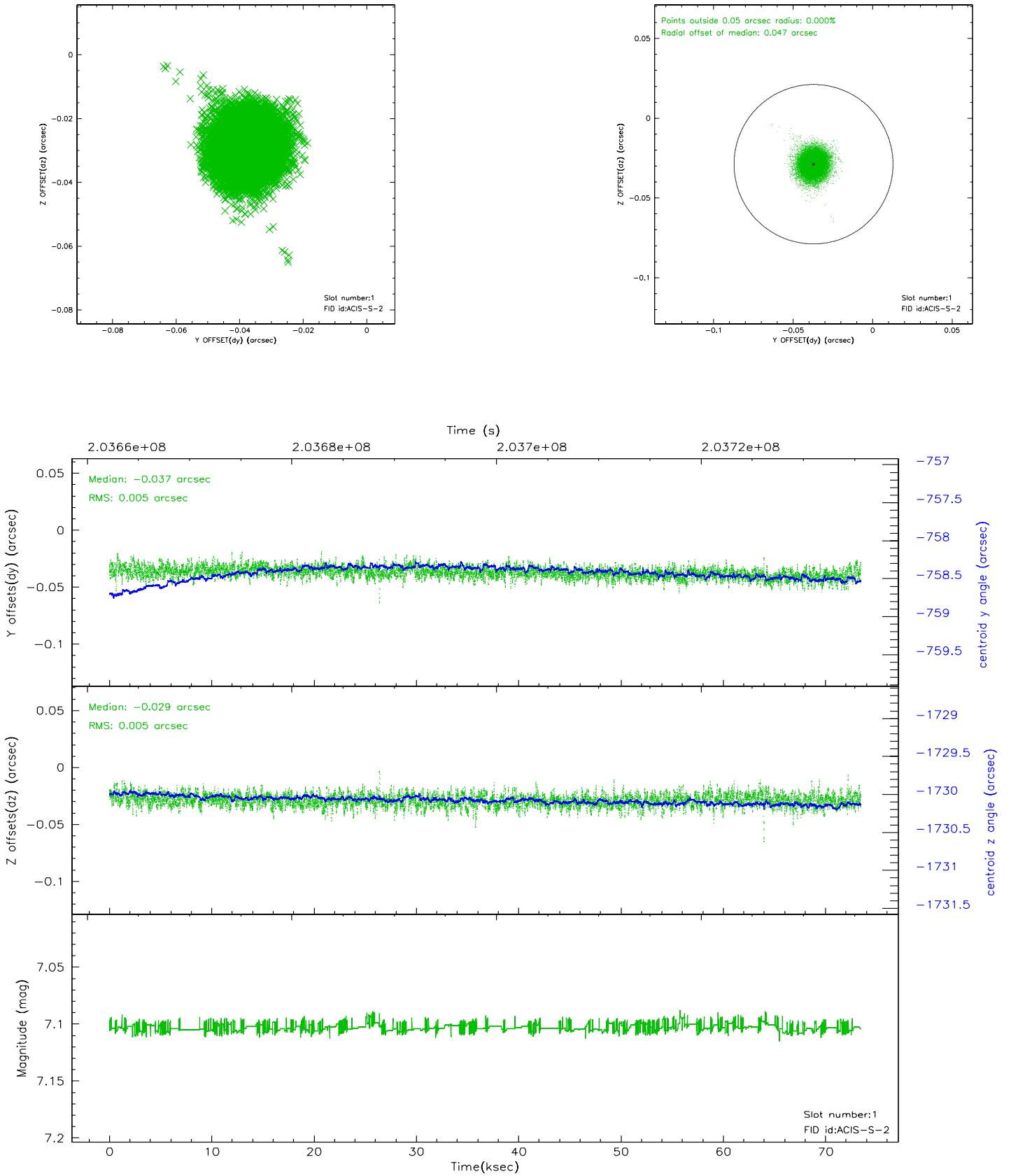


2.5 FID Slots

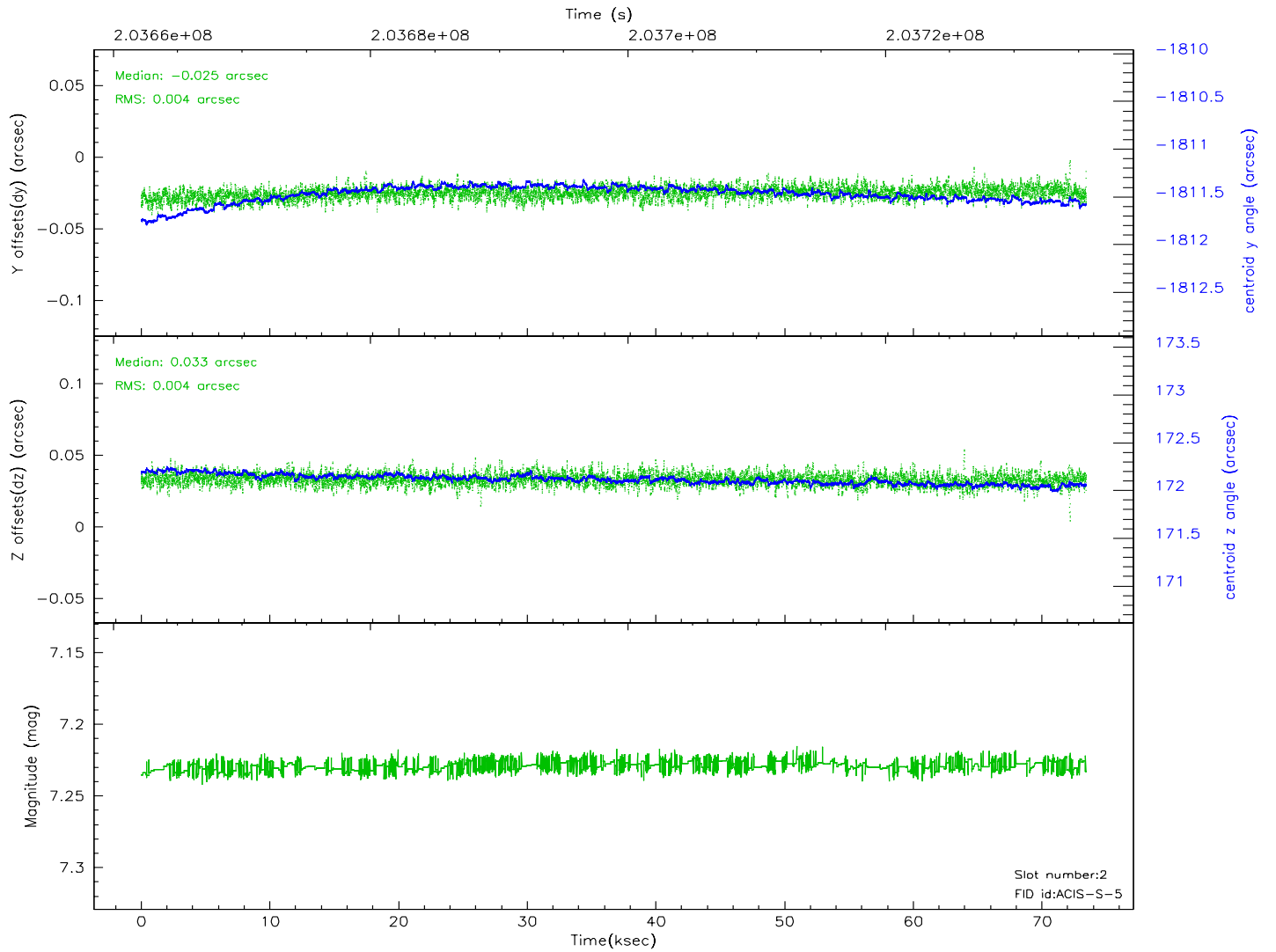
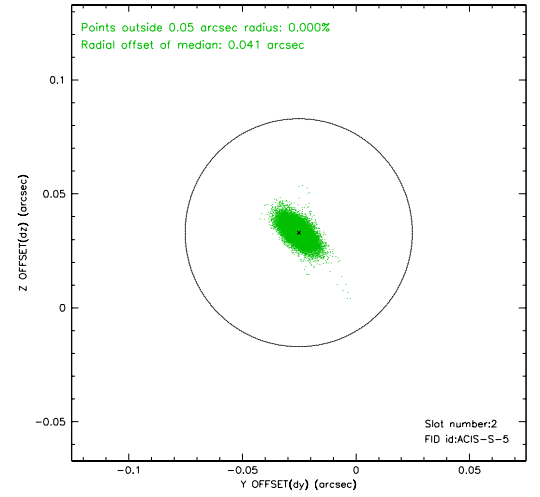
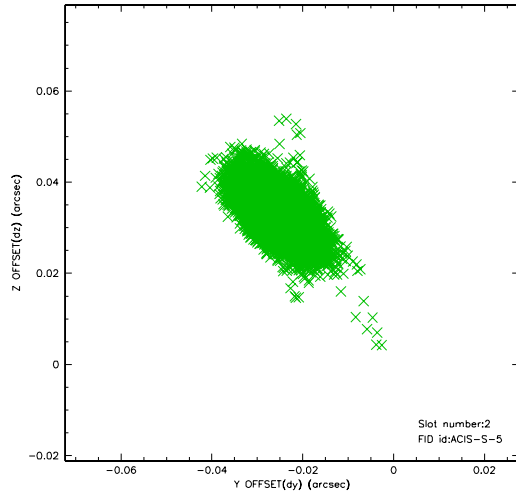
2.5.1 Slot 0



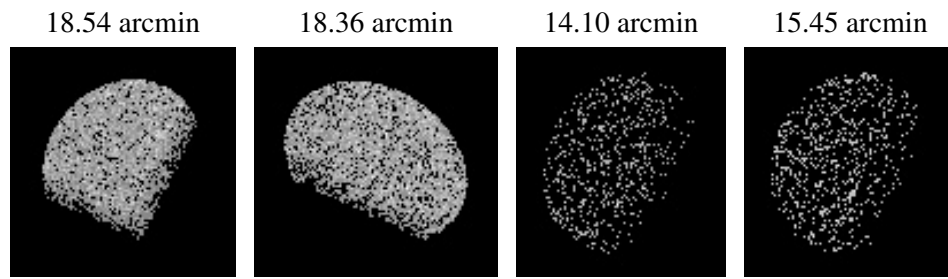
2.5.2 Slot 1



2.5.3 Slot 2



3 Point Sources



A Summary

A.1 Status

V&V Scientist	Jen Lauer
V&V Date (YYYY-MM-DD)	2006.05.02
V&V Edition	1
V&V Disposition and Status	OK
V&V Charge Time	72.585

A.2 Comments

Roll constraint not met, by 0.16 degrees.