

V&V Reference Report

L2 ASCDS Version : 7.6.7.2

Observation 4608 - L2 Version 001
Chandra X-Ray Center

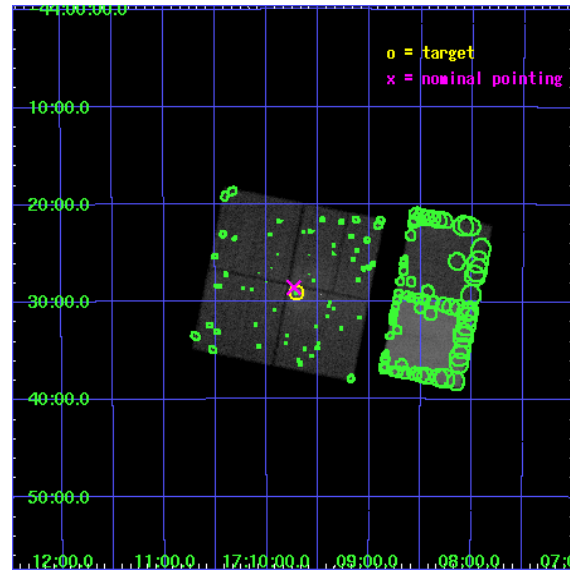
L2 Processing Date : Jun 4 2006

Contents

1	Front	2
2	OBI	3
2.1	OBI	3
2.1.1	Images	3
2.1.2	Bias	3
2.1.3	Parameters	4
2.1.4	Events	4
2.2	Compared Parameters	5
2.3	Aspect	6
2.4	Star Slots	9
2.4.1	Slot 3	9
2.4.2	Slot 4	10
2.4.3	Slot 5	11
2.4.4	Slot 6	12
2.4.5	Slot 7	13
2.5	FID Slots	14
2.5.1	Slot 0	14
2.5.2	Slot 1	15
2.5.3	Slot 2	16
3	Point Sources	17
A	Summary	18
A.1	Status	18
A.2	Comments	18

1 Front

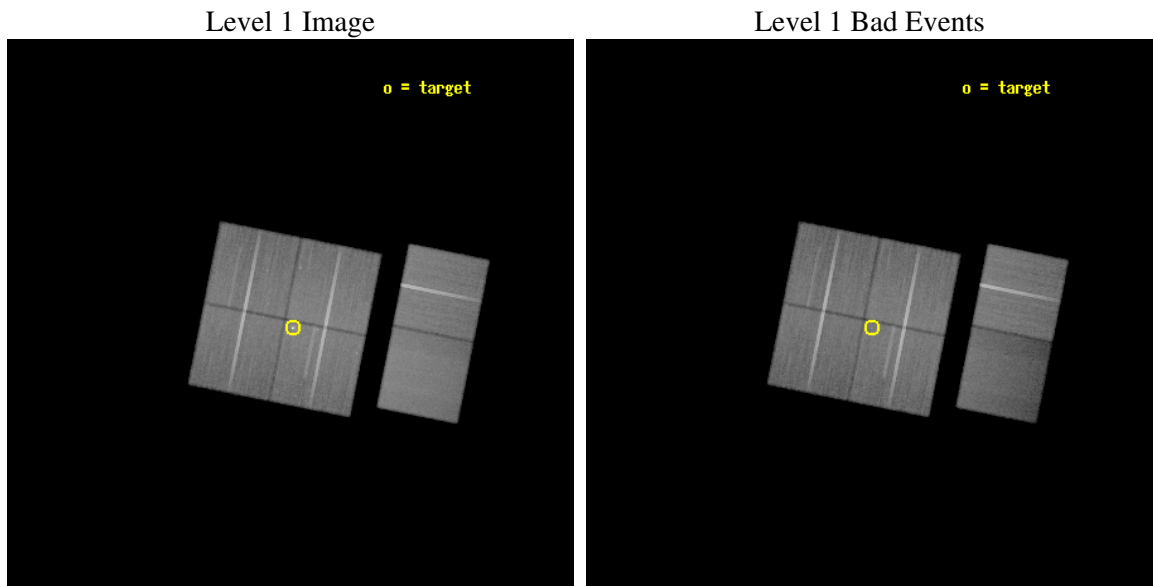
seq_num	500433
obs_id	4608
title	The Wind Torus of PSR B1706-44
observer	Prof. Roger Romani
object	PSR B1706-44
dtcycle	0
cycle	P
ra_targ	257.427917
dec_targ	-44.485167
ra_nom	257.43384398115
dec_nom	-44.475750628119
roll_nom	101.30024194591
revision	2
ontime	100140.71769637
livetime	98872.675631396
ontime0	100140.71777612
ontime1	100143.95866662
ontime2	100130.99478549
ontime3	100140.71769637
ontime6	100143.95865664
ontime7	100147.19962692
l2events	483534



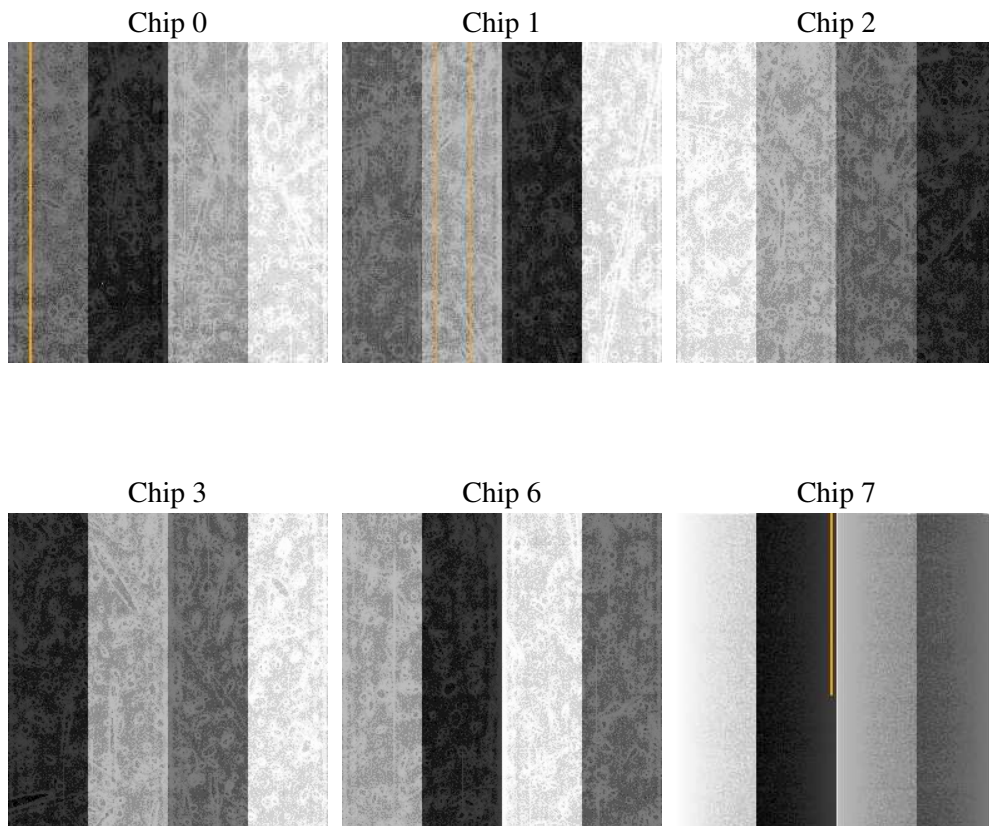
2 OBI

2.1 OBI

2.1.1 Images



2.1.2 Bias



2.1.3 Parameters

obi_num	0
ascdsver	7.6.7.2
caldsver	3.2.2
date	2006-06-04T07:45:44
revision	2

sched_exp_time	100000.000000
ontime	100574.71424502
ontime0	100574.71434471
ontime1	100577.95523521
ontime2	100564.99133414
ontime3	100574.71424502
ontime6	100577.95522523
ontime7	100581.19619551
l1events	2873460

2.1.4 Events

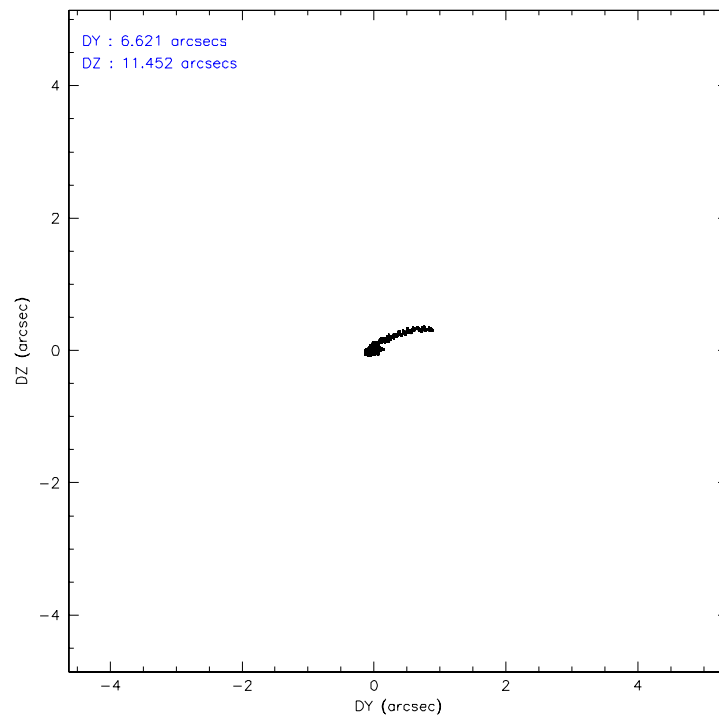
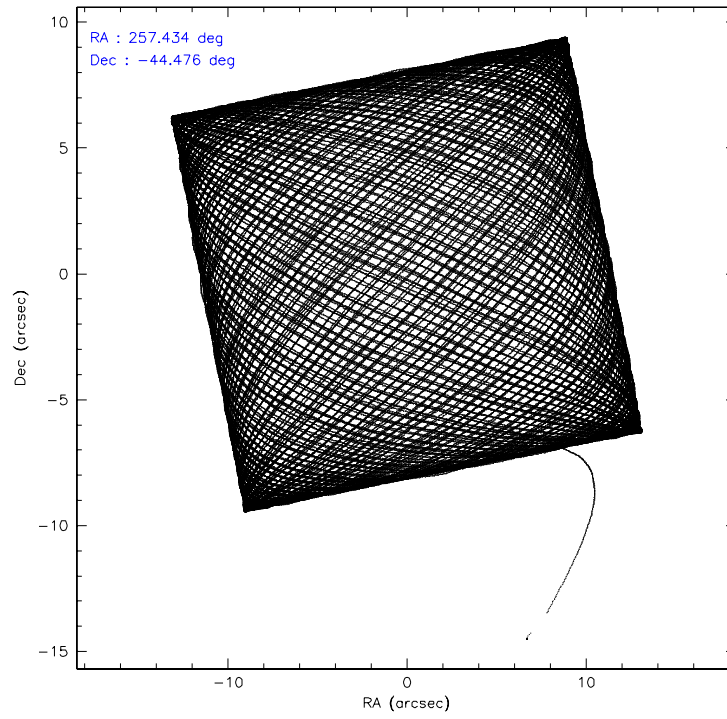
	ccd 0	ccd 1	ccd 2	ccd 3	ccd 6	ccd 7
level 1 events	450803	440932	512915	497832	503201	467777
rejected events	393311	382643	446317	426129	439330	254729
rejected %	87%	86%	87%	85%	87%	54%

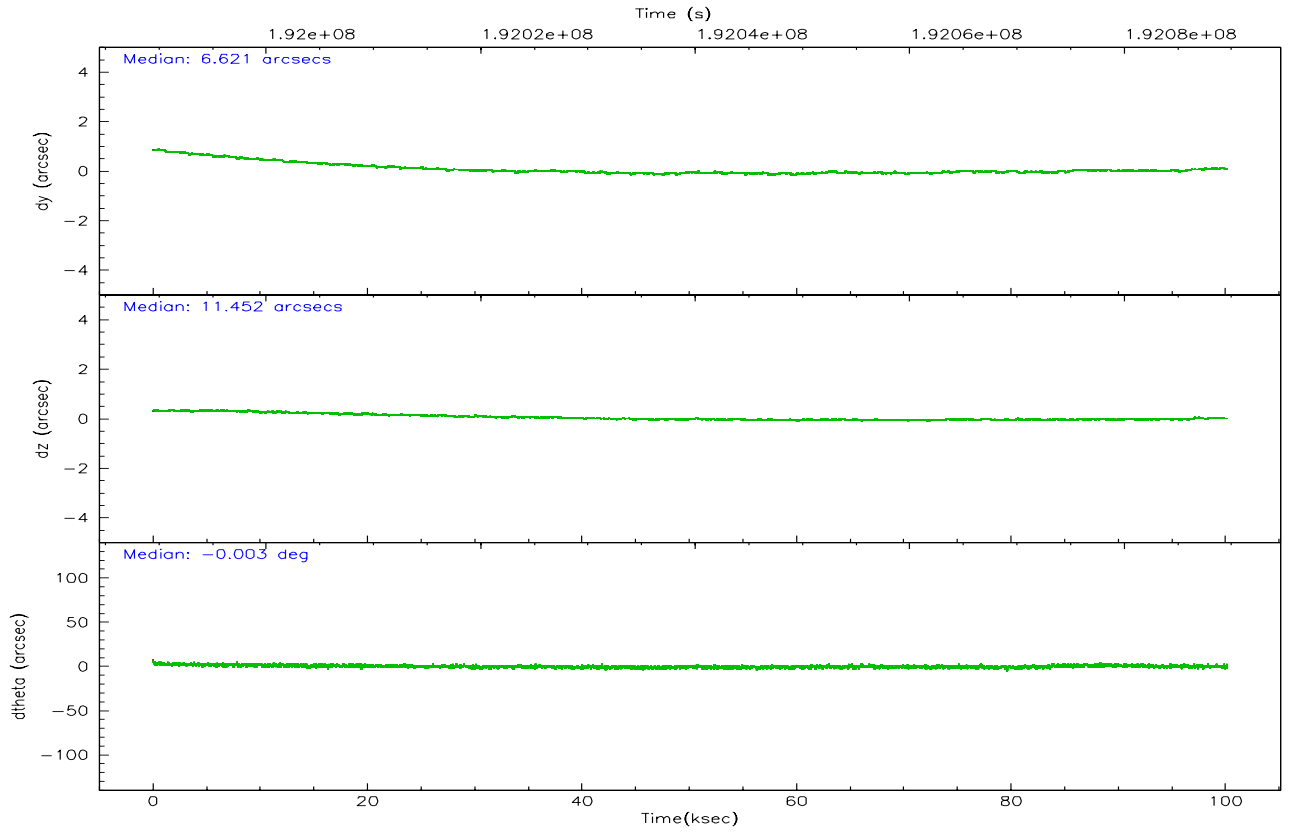
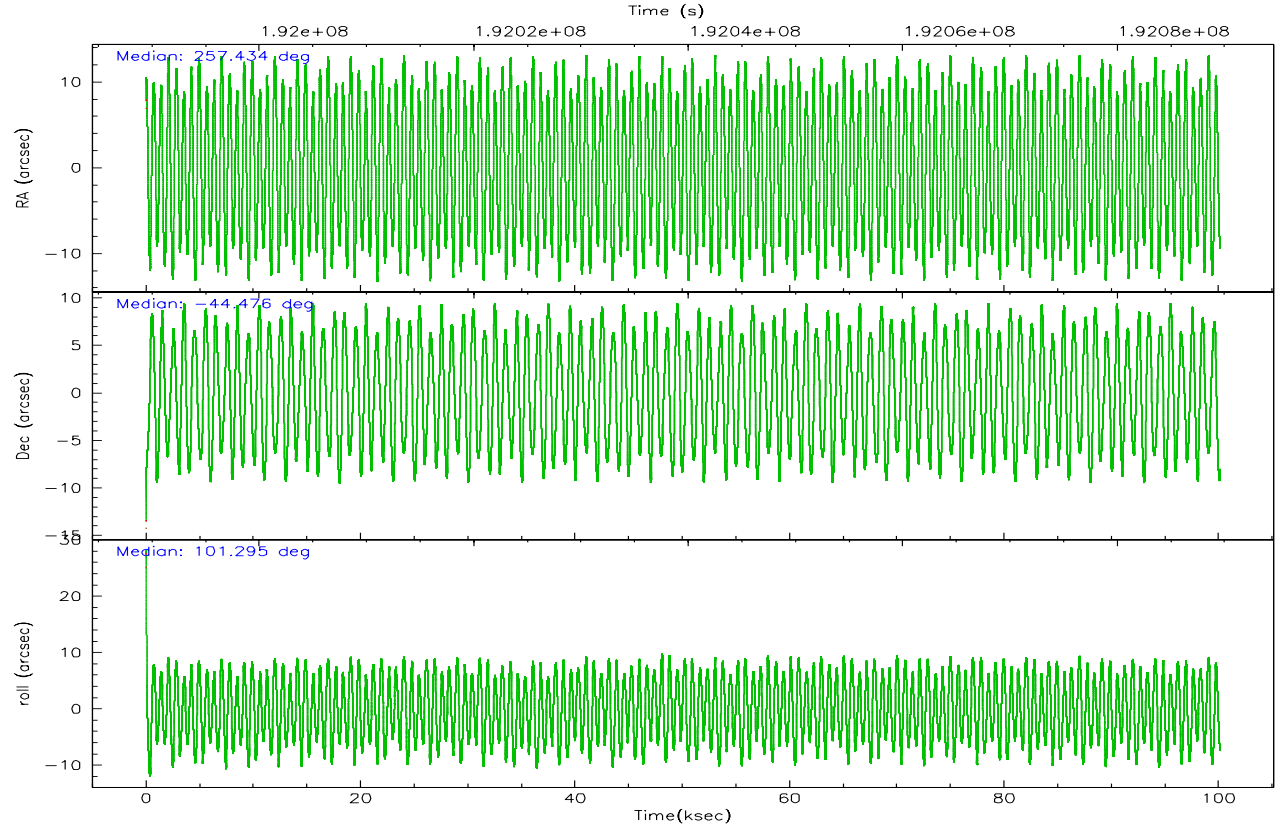
	ccd 0	ccd 1	ccd 2	ccd 3	ccd 6	ccd 7
grade 0 events	25423	24206	33618	38242	29547	15513
	5%	5%	6%	7%	5%	3%
grade 1 events	274	223	340	369	280	257
	0%	0%	0%	0%	0%	0%
grade 2 events	12147	11506	13195	12512	12244	51737
	2%	2%	2%	2%	2%	11%
grade 3 events	5834	6485	5858	6038	6025	12344
	1%	1%	1%	1%	1%	2%
grade 4 events	5415	6147	5908	5980	5769	12226
	1%	1%	1%	1%	1%	2%
grade 5 events	14740	15944	13883	16926	17479	37155
	3%	3%	2%	3%	3%	7%
grade 6 events	8904	10231	8771	9205	10551	122408
	1%	2%	1%	1%	2%	26%
grade 7 events	378066	366190	431342	408560	421306	216137
	83%	83%	84%	82%	83%	46%

2.2 Compared Parameters

Parameter	Planned	Actual	Parameter	Planned	Actual
Instrument	ACIS	ACIS	Obspar format version number	6	6
Detector	ACIS-012367	ACIS-012367	Obspar file type	PREDICTED	ACTUAL
Grating	NONE	NONE	Obspar update status	NONE	UPDATED
Data mode	VFAINT	VFAINT	On-chip summing requested	N	N
Observation mode	POINTING	POINTING	Subarray requested	NONE	NONE
Pointing RA	257.459301	257.4338439811526	Alternating exposures requested	N	N
Pointing Dec	-44.496234	-44.47575062811947	Primary exposure time	0.000000	3.2
Pointing Roll	101.109395	101.3002419459093			
SIM focus pos (mm)	-0.782348	-0.7809083437167272			
SIM defocus (mm)	0	0.001439871863259334			
SIM translation stage pos (mm)	-233.592463	-233.5874344608287			
SIM translation stage offset (mm)	0	-0.005018542100998502			
Observation start time	191989596.184000	191988330.29004			
Observation start date	2004-02-01T02:25:32	2004-02-01T02:05:30			
Observation end time	192089596.184000	192090394.6695			
Observation end date	2004-02-02T06:12:12	2004-02-02T06:26:34			
Read mode	TIMED	TIMED			

2.3 Aspect



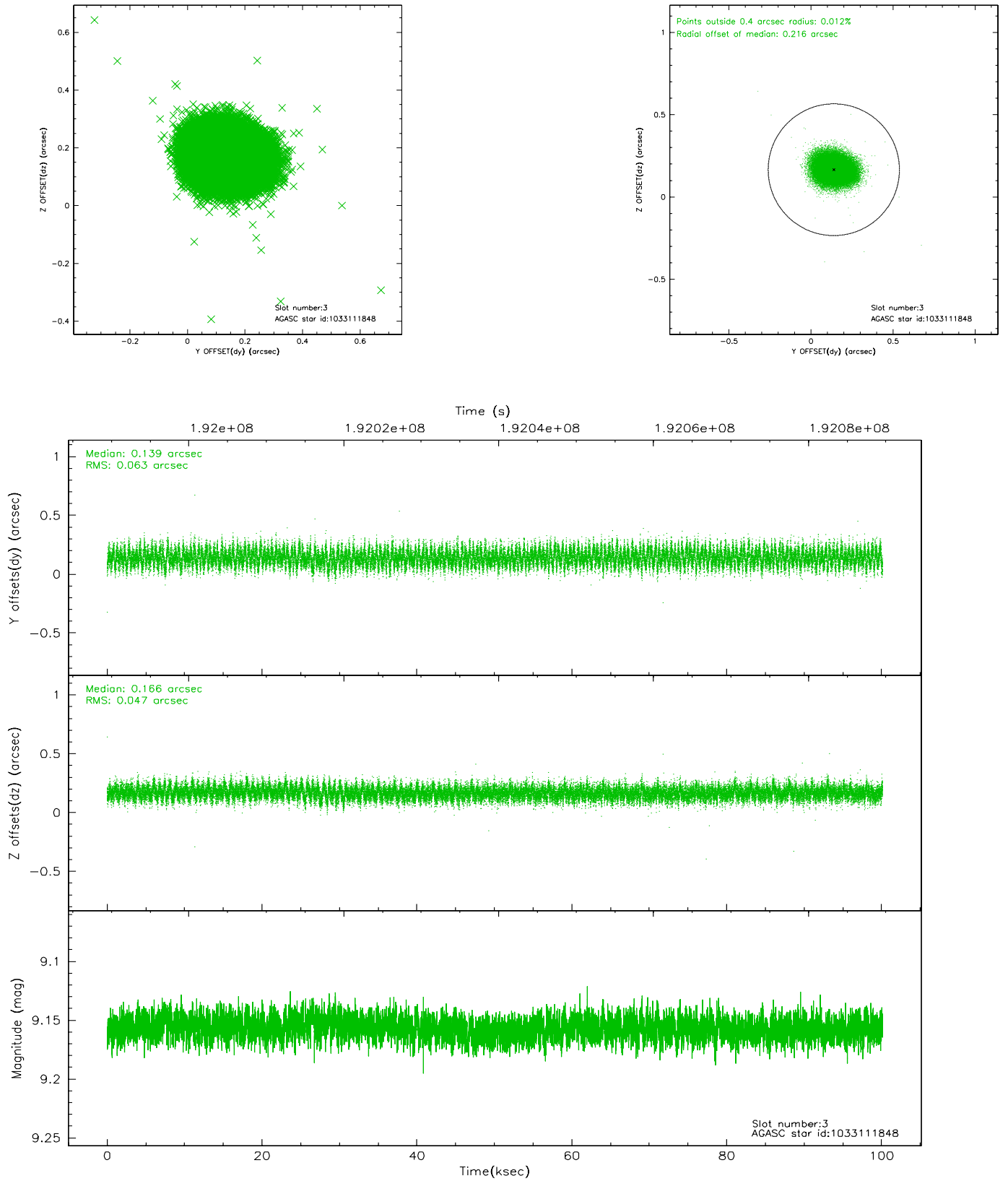


Slot Statistics

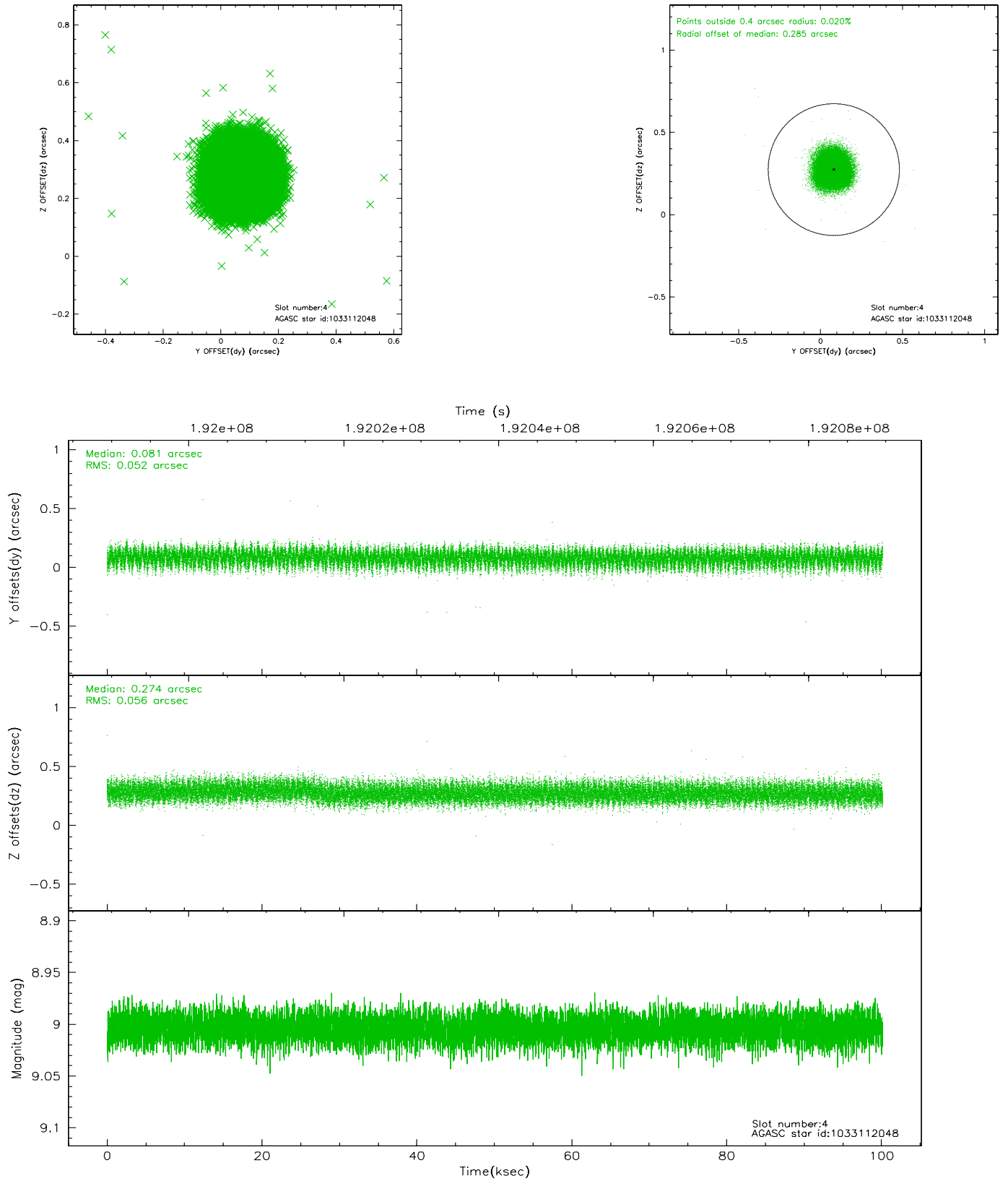
slot	status	id	mag	n_pts	med_dy	med_dz	dr1	dr2	ra	dec	mean_y	mean_z
0	FID	ACIS-I-1	7.24	24427	-0.055	0.002	0.010	0.018	0.000000	0.000000	932.94	-835.01
1	FID	ACIS-I-2	7.14	24424	-0.093	-0.025	0.009	0.018	0.000000	0.000000	-761.24	-841.46
2	FID	ACIS-I-4	7.17	24425	0.049	0.091	0.008	0.019	0.000000	0.000000	2152.94	1064.95
3	GUIDE	1033111848	9.16	48836	0.139	0.166	0.083	0.135	257.770921	-44.964714	-1809.23	-453.32
4	GUIDE	1033112048	9.00	48844	0.081	0.274	0.082	0.129	258.432329	-44.729220	-1316.86	-2277.25
5	GUIDE	1091578128	8.61	48846	0.127	-0.043	0.066	0.107	257.198938	-45.154577	-2199.38	1105.23
6	GUIDE	1033000208	7.78	48848	-0.186	-0.237	0.070	0.106	256.502750	-44.372681	896.22	2332.37
7	GUIDE	1032980648	8.98	48830	-0.160	-0.164	0.089	0.140	256.588109	-44.440758	615.40	2161.10

2.4 Star Slots

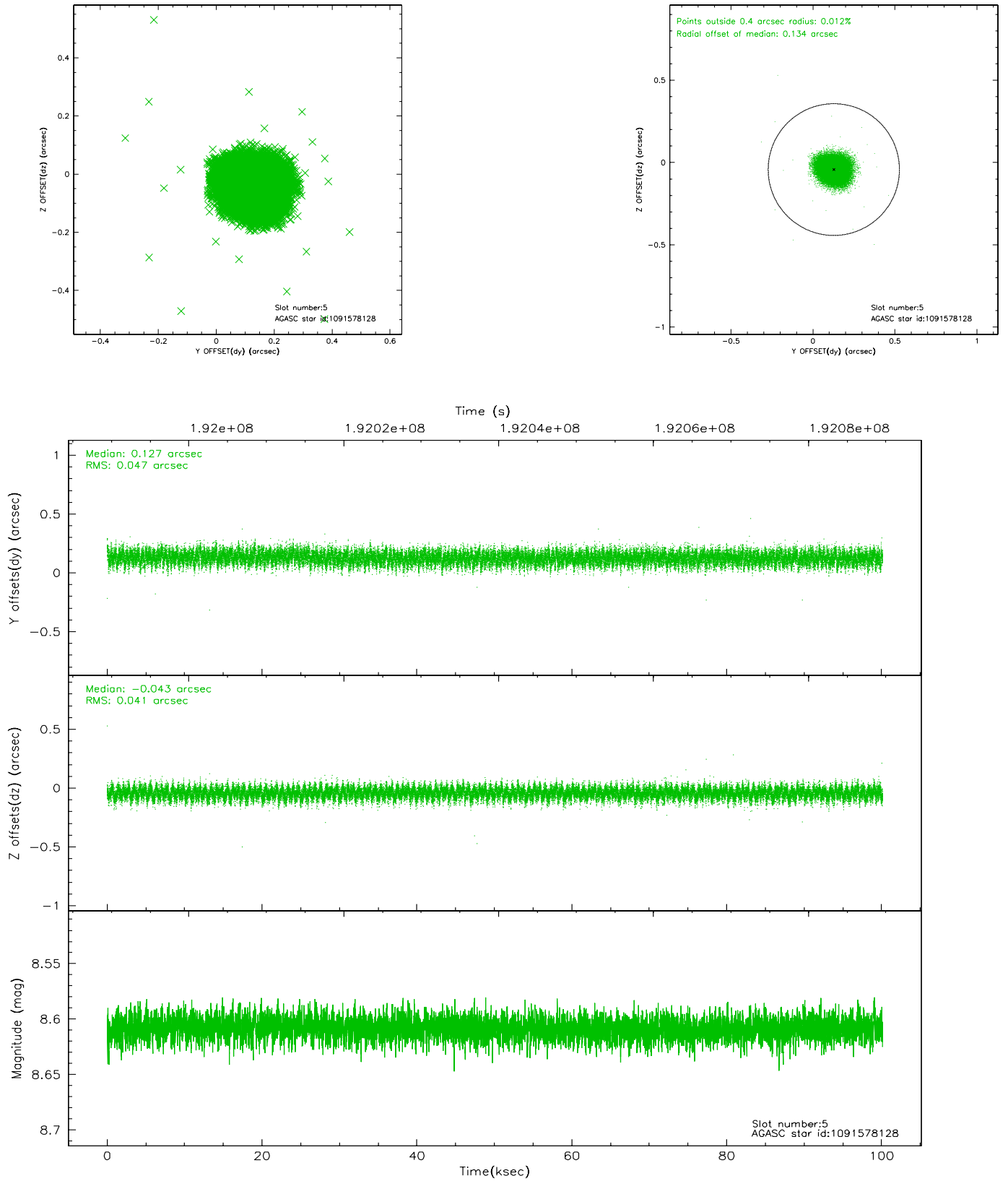
2.4.1 Slot 3



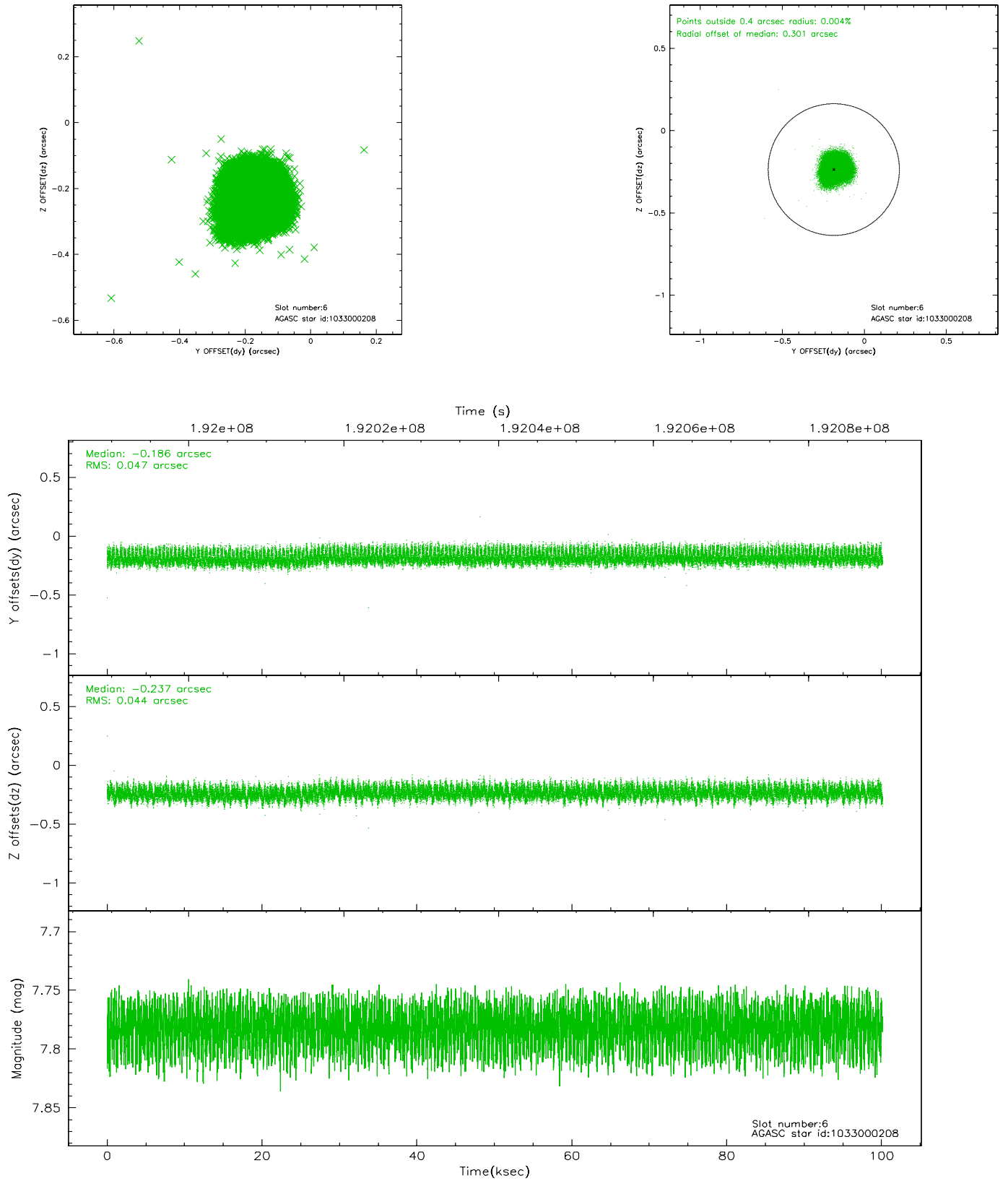
2.4.2 Slot 4



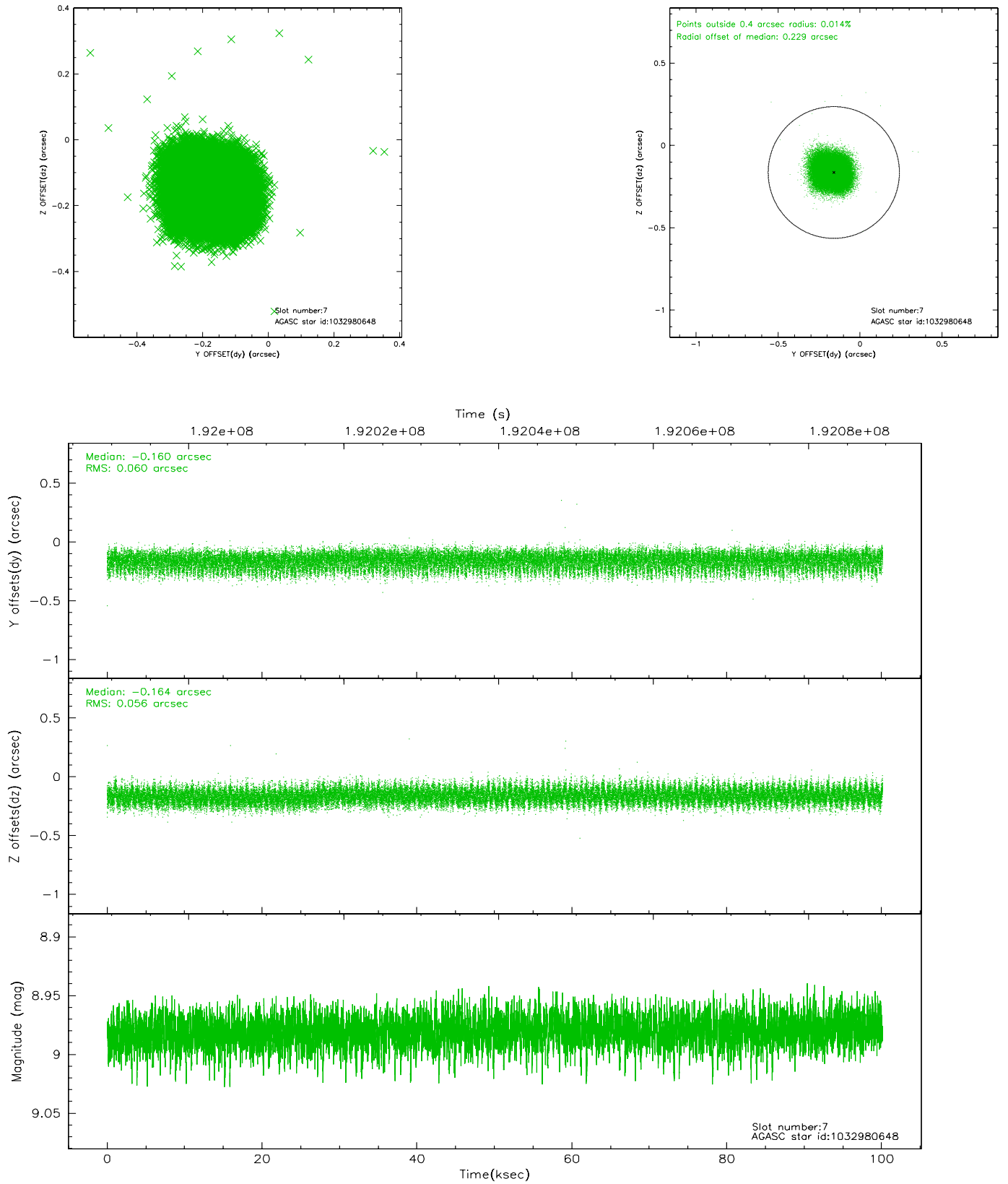
2.4.3 Slot 5



2.4.4 Slot 6

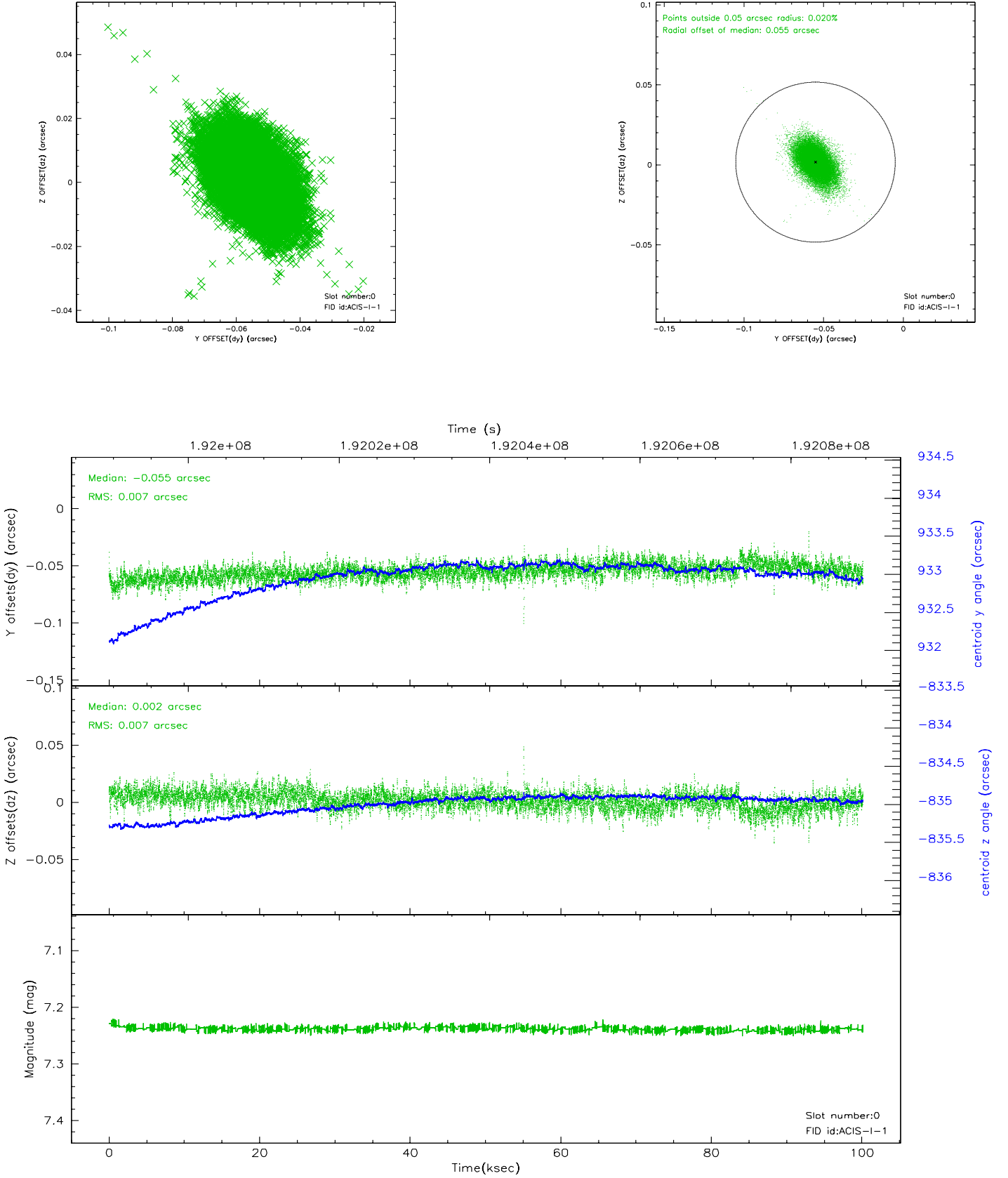


2.4.5 Slot 7

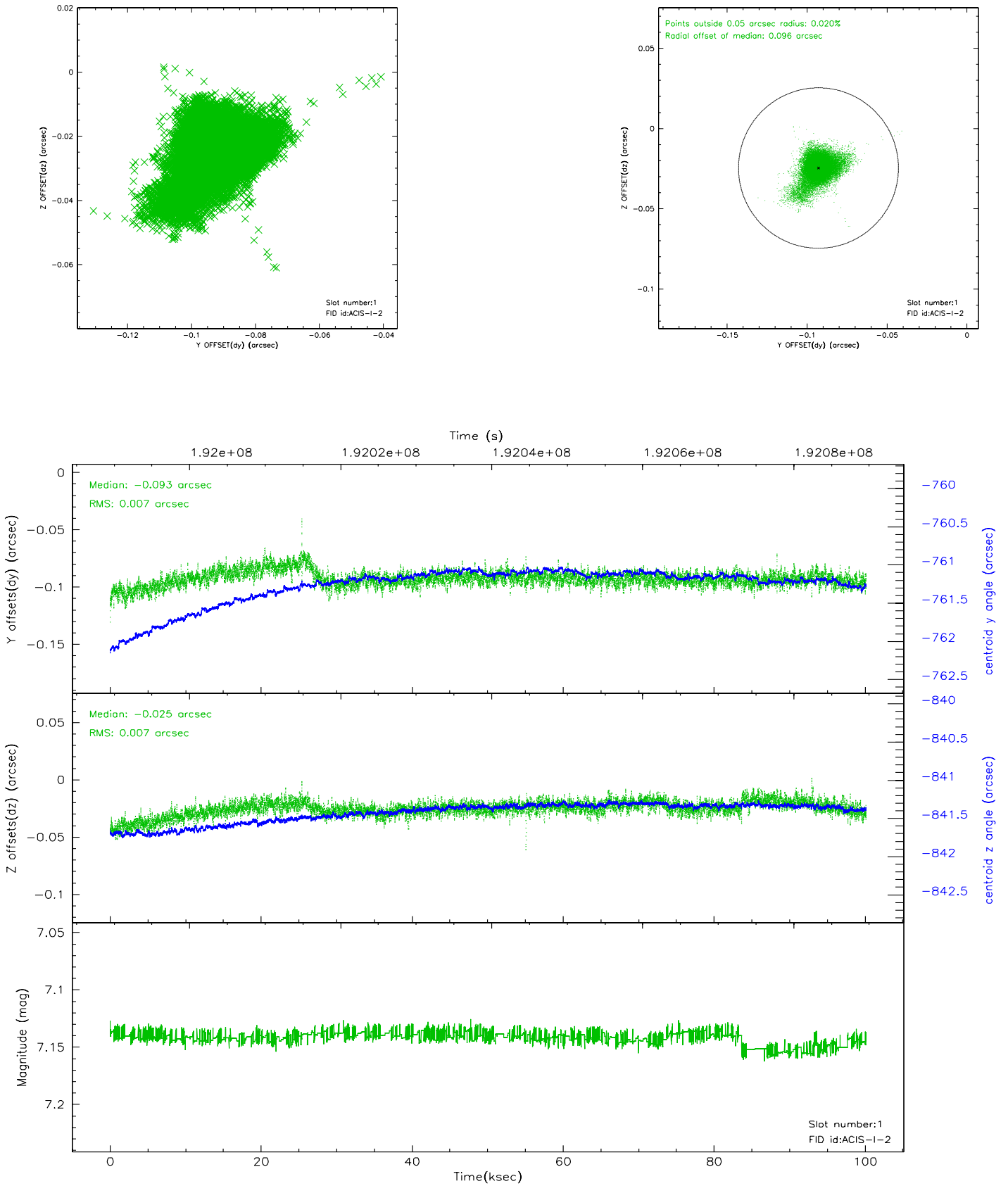


2.5 FID Slots

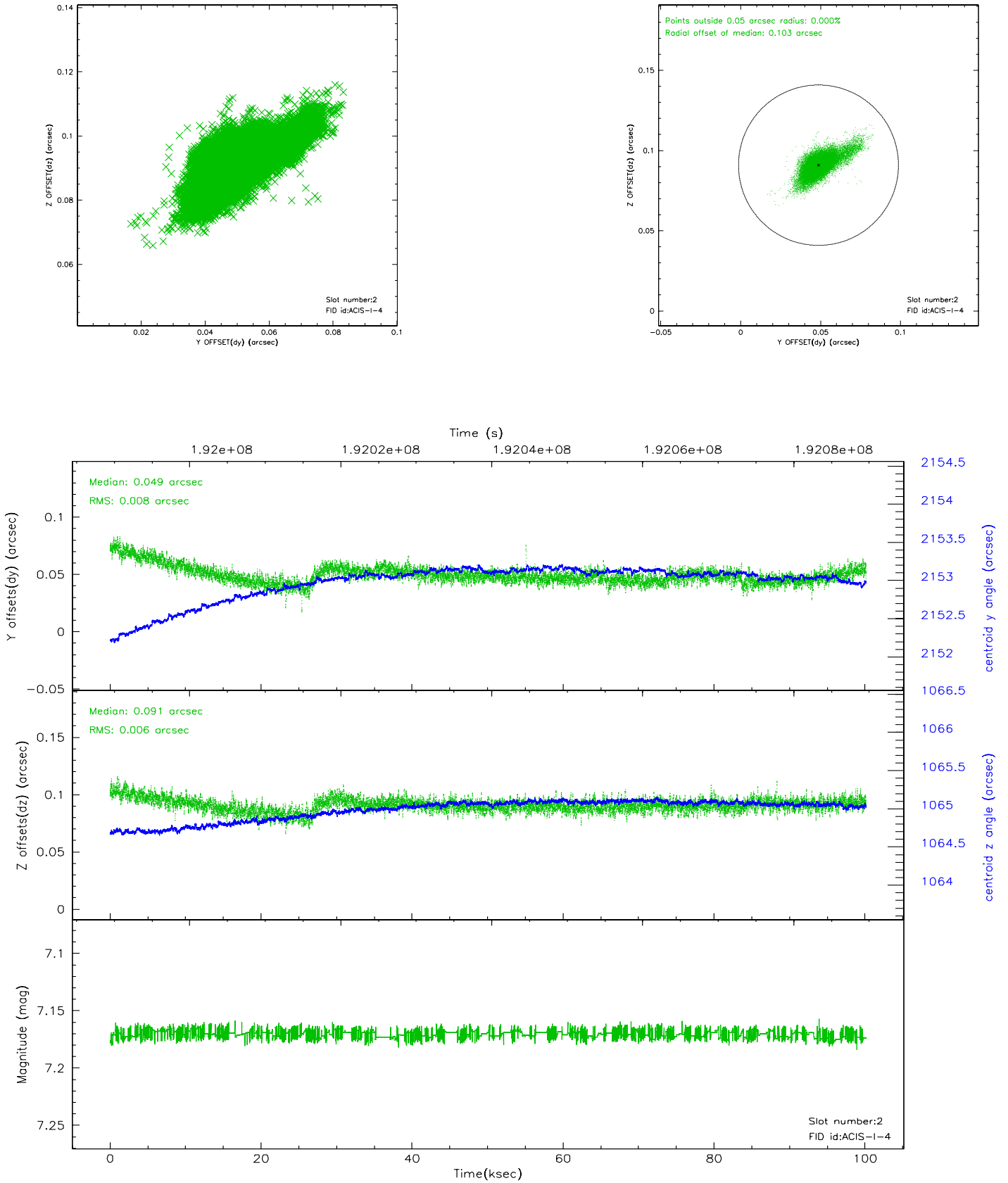
2.5.1 Slot 0



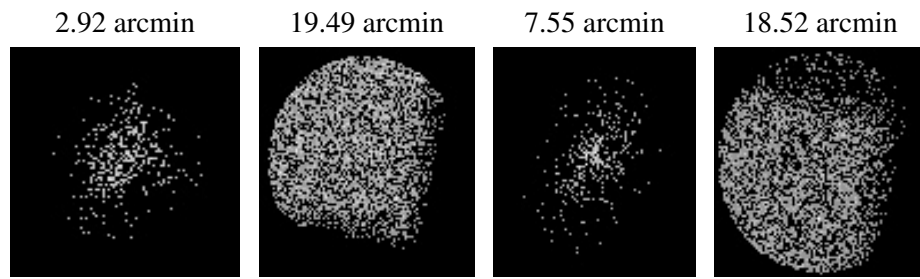
2.5.2 Slot 1



2.5.3 Slot 2



3 Point Sources



A Summary

A.1 Status

V&V Scientist	Beth Sundheim
V&V Date (YYYY-MM-DD)	2006.06.05
V&V Edition	1
V&V Disposition and Status	OK
V&V Charge Time	100.147

A.2 Comments