

V&V Reference Report

L2 ASCDS Version : 7.6.7.1

Observation 5470 - L2 Version 002
Chandra X-Ray Center

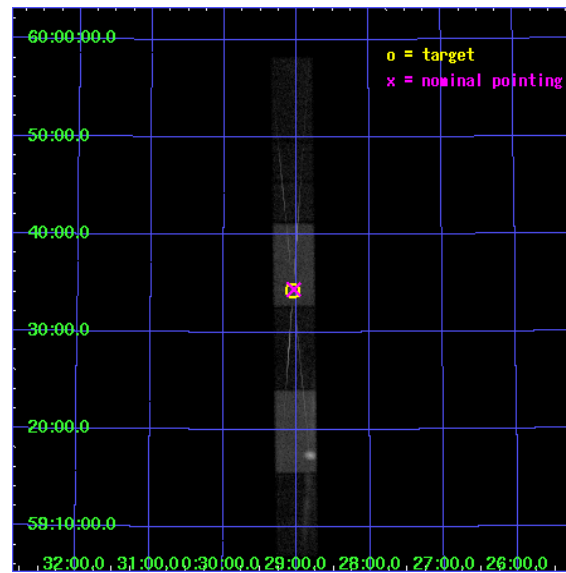
L2 Processing Date : Apr 8 2006

Contents

1	Front	2
2	OBI	3
2.1	OBI	3
2.1.1	Images	3
2.1.2	Bias	3
2.1.3	Parameters	4
2.1.4	Events	4
2.2	Compared Parameters	5
2.3	Aspect	6
2.4	Star Slots	9
2.4.1	Slot 3	9
2.4.2	Slot 4	10
2.4.3	Slot 5	11
2.4.4	Slot 6	12
2.4.5	Slot 7	13
2.5	FID Slots	14
2.5.1	Slot 0	14
2.5.2	Slot 1	15
2.5.3	Slot 2	16
3	Gratings	17
3.1	HEG Arm	17
3.2	MEG Arm	19
A	Summary	21
A.1	Status	21
A.2	Comments	21

1 Front

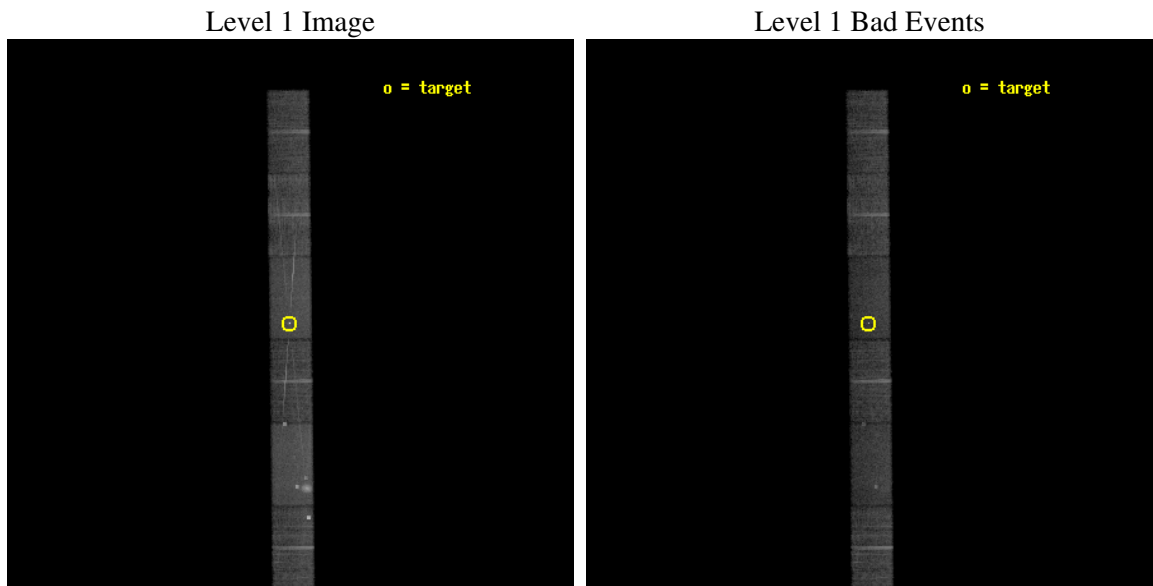
seq_num	400400
obs_id	5470
title	INVESTIGATING NEW INTEGRAL SOURCES WITH CHANDRA
observer	Dr Adamantia Paizis
object	IGR J00291+5934
dtcycle	0
cycle	P
ra_targ	7.26275
dec_targ	59.571944
ra_nom	7.2595244907288
dec_nom	59.573449356268
roll_nom	269.34298906891
revision	2
ontime	18070.999873281
livetime	17645.028135239
ontime4	18070.999873281
ontime5	18070.999873281
ontime6	18070.999873281
ontime7	18070.999873281
ontime8	18070.999873281
ontime9	18070.999873281
l2events	139449



2 OBI

2.1 OBI

2.1.1 Images

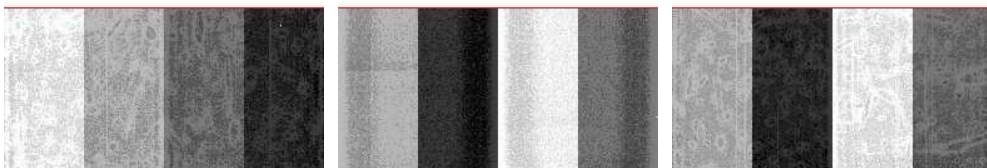


2.1.2 Bias

Chip 4

Chip 5

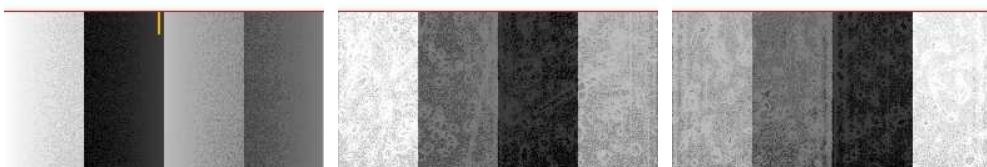
Chip 6



Chip 7

Chip 8

Chip 9



2.1.3 Parameters

obi_num	0
ascdsver	7.6.7.1
caldbver	3.2.1
date	2006-04-08T20:34:03
revision	2

sched_exp_time	18000.000000
ontime	18073.564023435
ontime4	18073.564003527
ontime5	18073.564023435
ontime6	18073.564003527
ontime7	18073.564023435
ontime8	18073.564003527
ontime9	18073.564023435
l1events	547904

2.1.4 Events

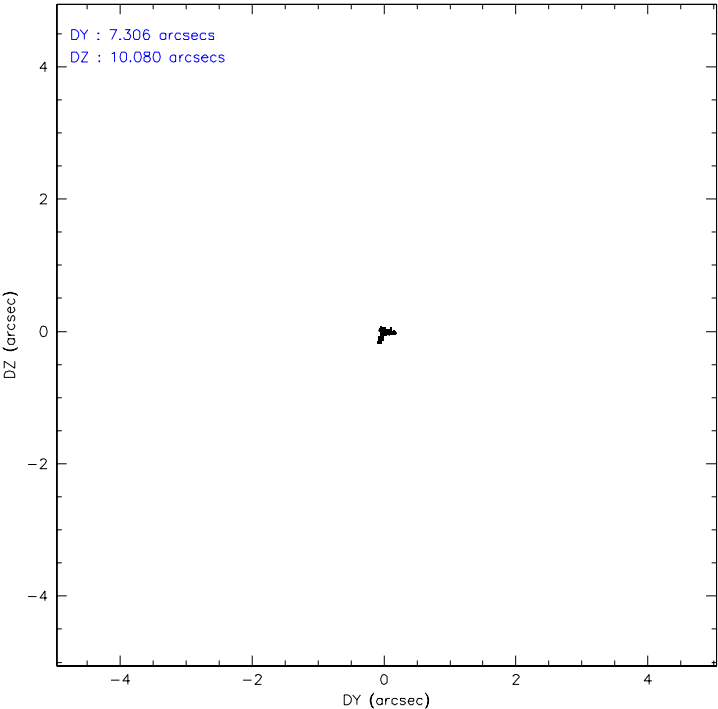
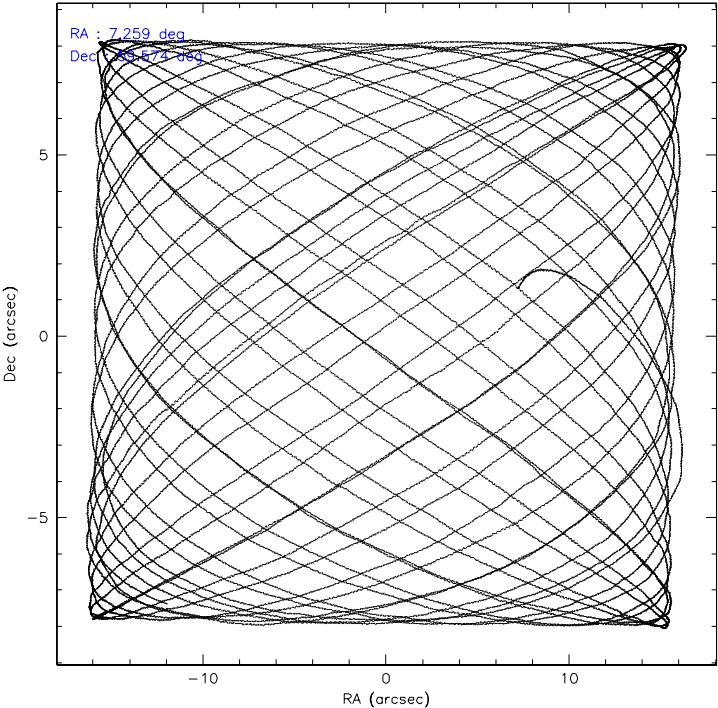
	ccd 4	ccd 5	ccd 6	ccd 7	ccd 8	ccd 9
level 1 events	88383	114443	77880	102981	92726	71491
rejected events	70169	56816	63317	55940	71415	62217
rejected %	79%	49%	81%	54%	77%	87%

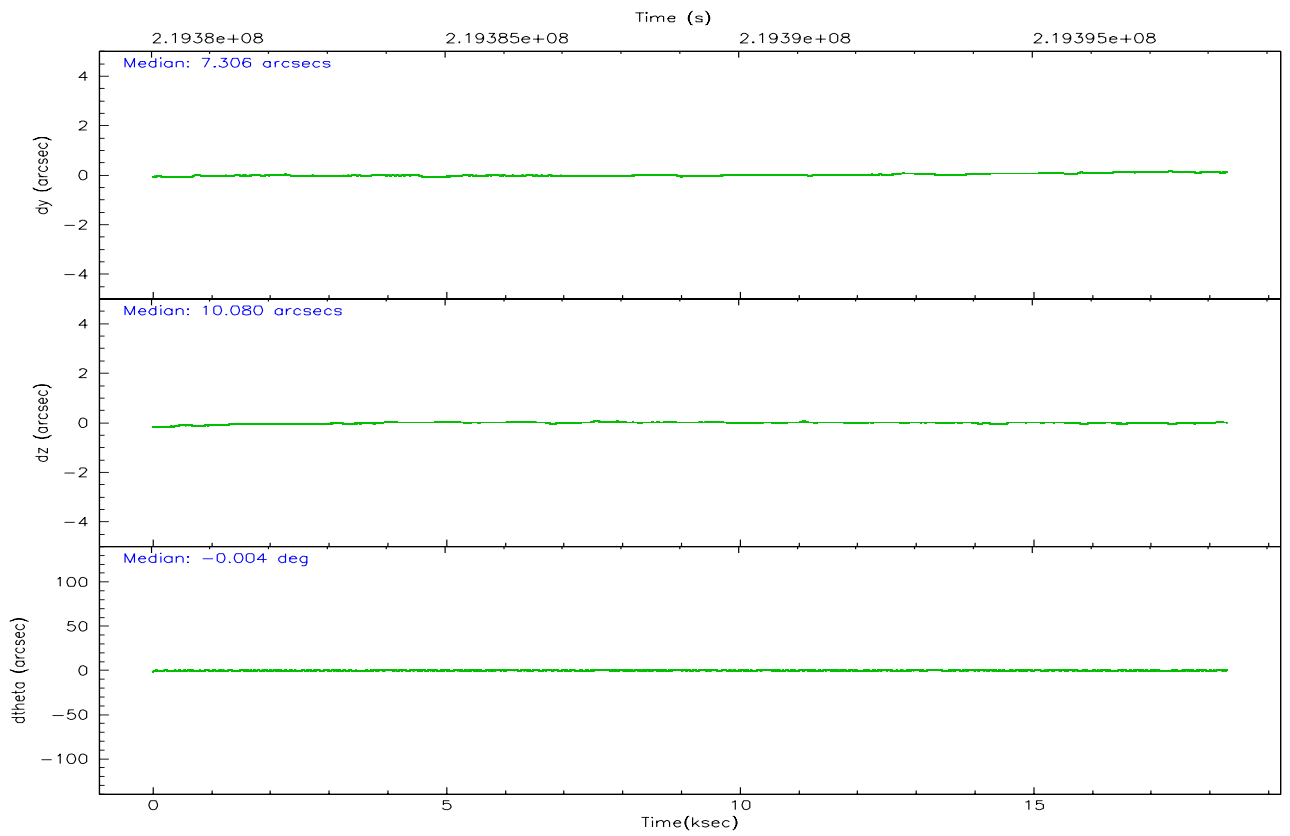
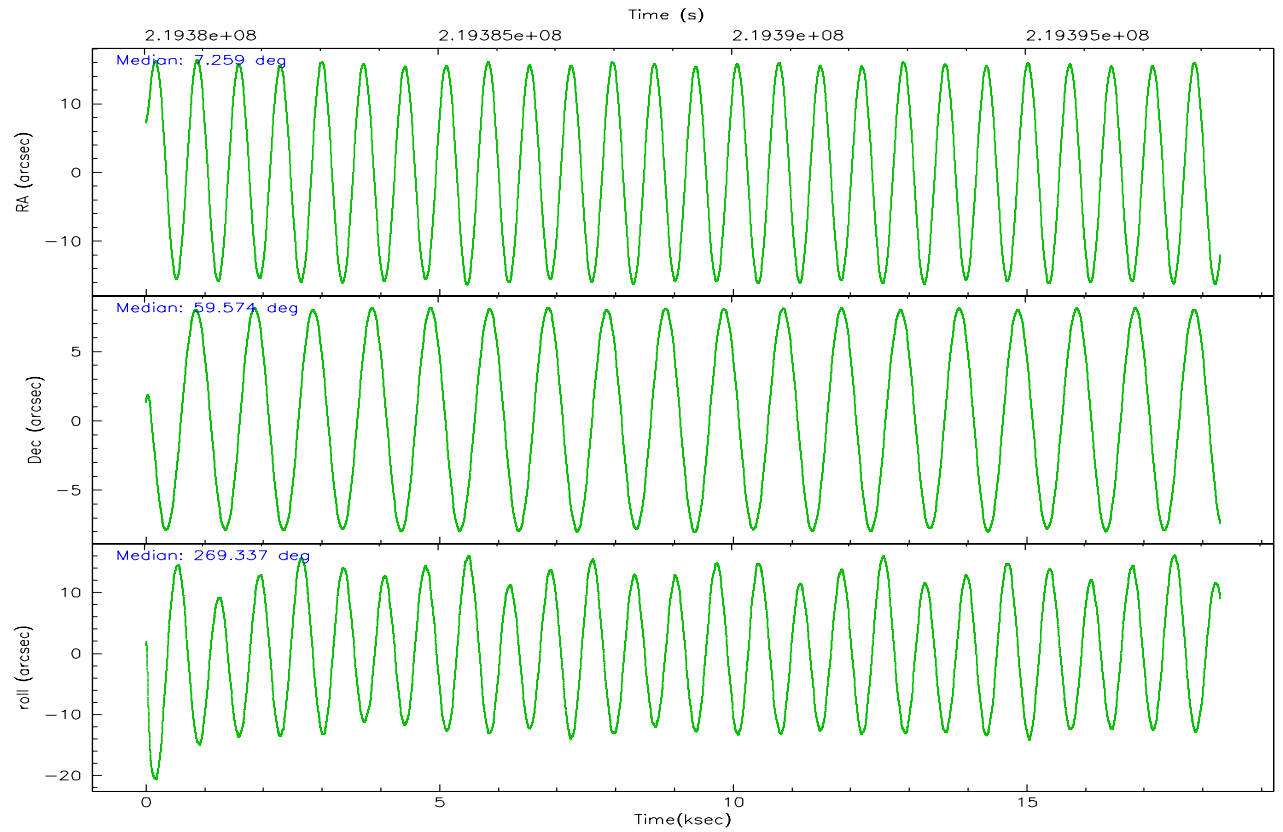
	ccd 4	ccd 5	ccd 6	ccd 7	ccd 8	ccd 9
grade 0 events	12242	7990	7991	4157	7594	3818
	13%	6%	10%	4%	8%	5%
grade 1 events	98	782	35	126	48	42
	0%	0%	0%	0%	0%	0%
grade 2 events	2245	17132	2330	11176	4350	1678
	2%	14%	2%	10%	4%	2%
grade 3 events	1151	2374	1211	3627	2190	1074
	1%	2%	1%	3%	2%	1%
grade 4 events	1098	2306	1156	3597	1958	1017
	1%	2%	1%	3%	2%	1%
grade 5 events	2860	5772	2995	7305	3809	3205
	3%	5%	3%	7%	4%	4%
grade 6 events	1482	27836	1877	24491	5219	1688
	1%	24%	2%	23%	5%	2%
grade 7 events	67207	50251	60285	48502	67558	58969
	76%	43%	77%	47%	72%	82%

2.2 Compared Parameters

Parameter	Planned	Actual	Parameter	Planned	Actual
Instrument	ACIS	ACIS	Obspar format version number	6	6
Detector	ACIS-456789	ACIS-456789	Obspar file type	PREDICTED	ACTUAL
Grating	HETG	HETG	Obspar update status	NONE	UPDATED
Data mode	FAINT	FAINT	On-chip summing requested	N	N
Observation mode	POINTING	POINTING	Subarray requested	CUSTOM	1/2
Pointing RA	7.232497	7.259524490728793	Subarray start row	1	1
Pointing Dec	59.597003	59.57344935626846	Subarray row count	512	512
Pointing Roll	269.209654	269.3429890689082	Alternating exposures requested	N	N
SIM focus pos (mm)	-0.684267	-0.6828225247311905	Primary exposure time	0.000000	1.7
SIM defocus (mm)	0	0.001444936568705701			
SIM translation stage pos (mm)	-183.992523	-183.985022191653			
SIM translation stage offset (mm)	-6.14	-6.147500391354811			
Observation start time	219380326.184000	219379421.36739			
Observation start date	2004-12-14T02:57:42	2004-12-14T02:43:41			
Observation end time	219398326.184000	219398558.63076			
Observation end date	2004-12-14T07:57:42	2004-12-14T08:02:38			
Read mode	TIMED	TIMED			

2.3 Aspect



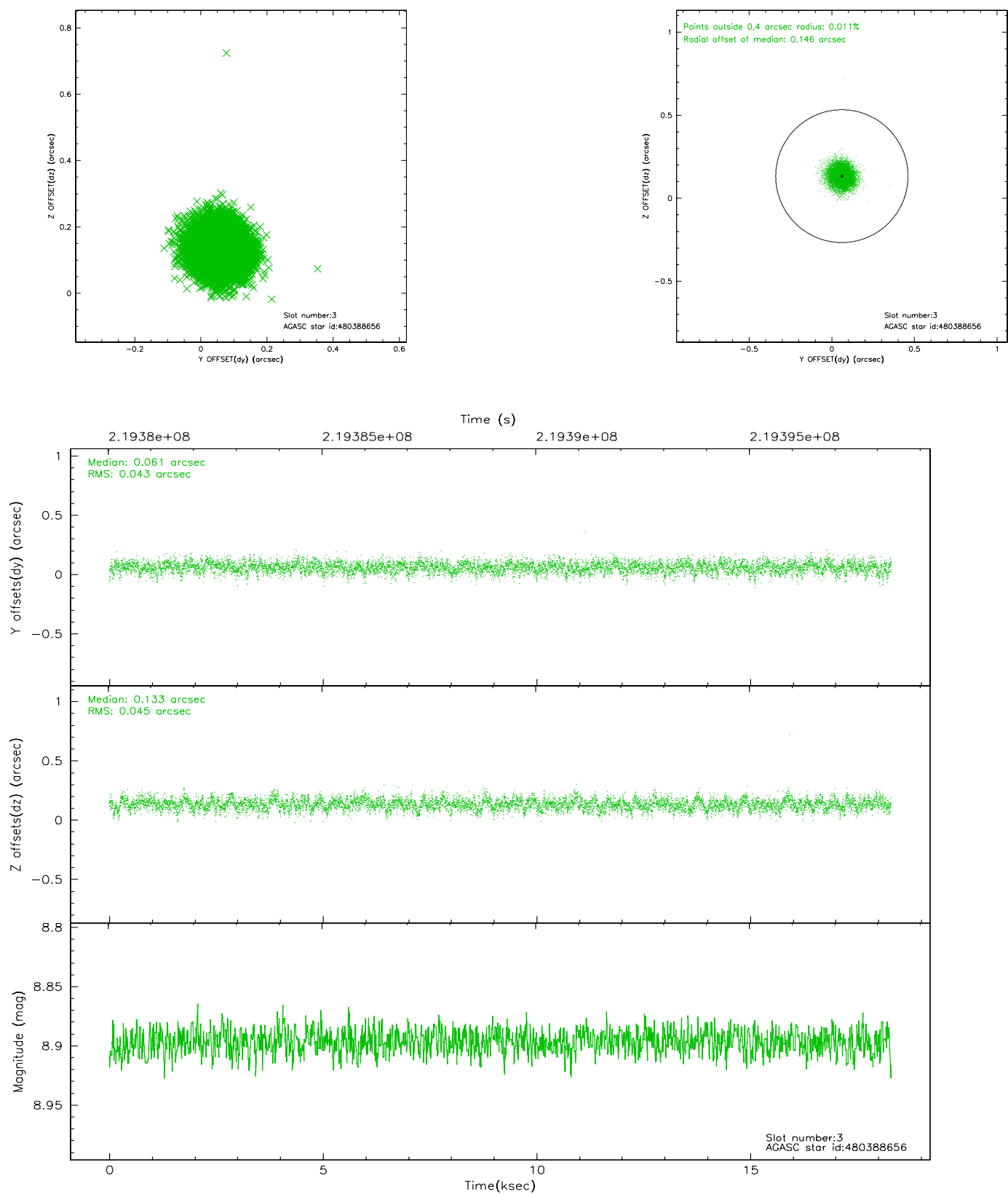


Slot Statistics

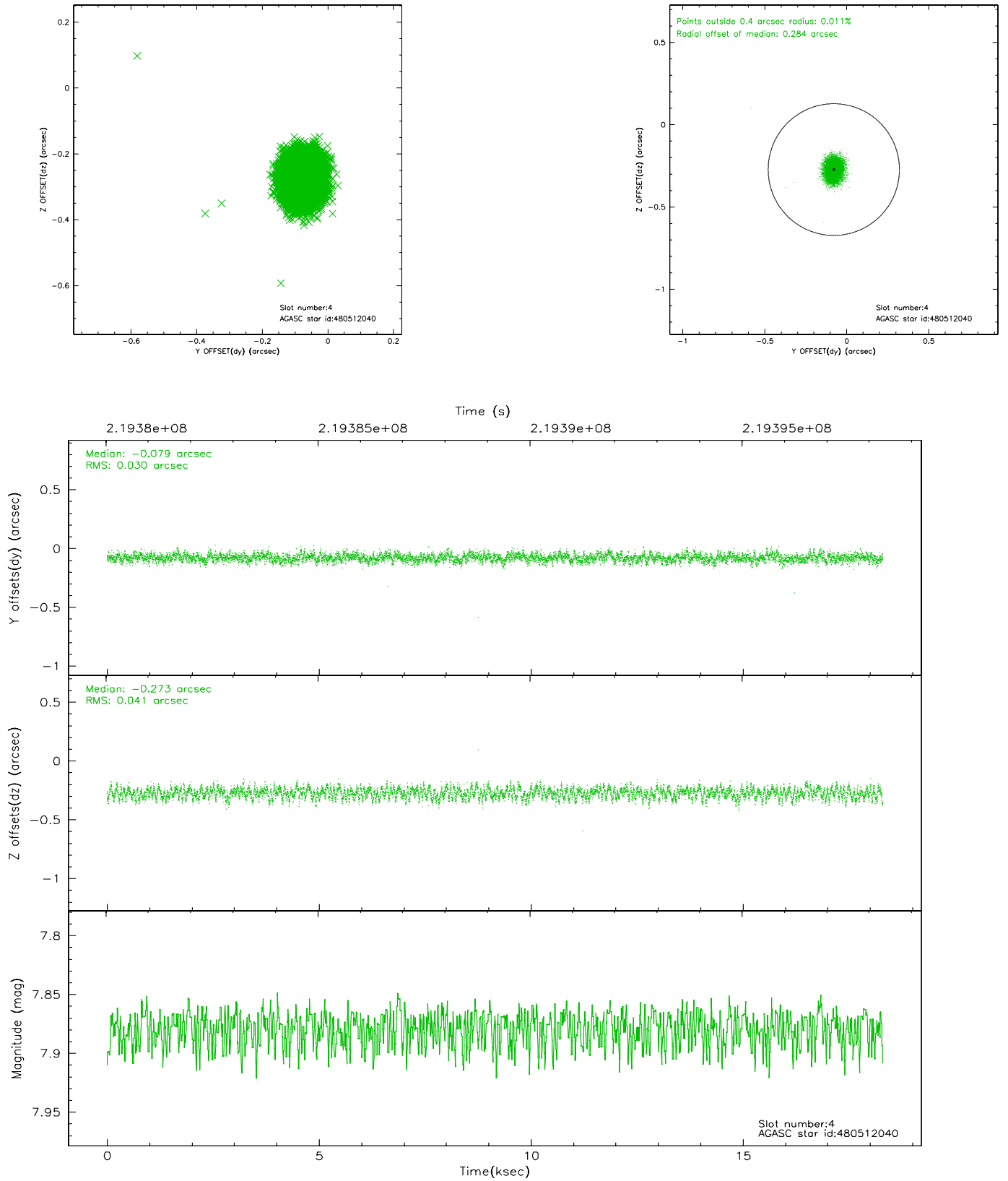
slot	status	id	mag	n_pts	med_dy	med_dz	dr1	dr2	ra	dec	mean_y	mean_z
0	FID	ACIS-S-2	7.08	4463	-0.048	-0.099	0.007	0.011	0.000000	0.000000	-759.71	-1858.12
1	FID	ACIS-S-4	7.18	4462	0.059	0.050	0.005	0.009	0.000000	0.000000	2153.59	50.22
2	FID	ACIS-S-5	7.22	4463	-0.042	0.058	0.007	0.011	0.000000	0.000000	-1812.25	44.18
3	GUIDE	480388656	8.90	8922	0.061	0.133	0.067	0.106	6.593066	59.181927	1505.09	-1158.25
4	GUIDE	480512040	7.88	8919	-0.079	-0.273	0.054	0.086	7.309429	59.469475	457.27	146.81
5	GUIDE	480513376	8.58	8922	0.214	0.005	0.059	0.093	7.508901	59.105688	1760.83	535.63
6	GUIDE	480518776	8.14	8926	-0.067	0.001	0.066	0.104	8.537557	59.899306	-1143.78	2340.22
7	GUIDE	526276608	8.59	8924	-0.127	0.134	0.060	0.099	7.524994	60.151139	-2003.23	496.85

2.4 Star Slots

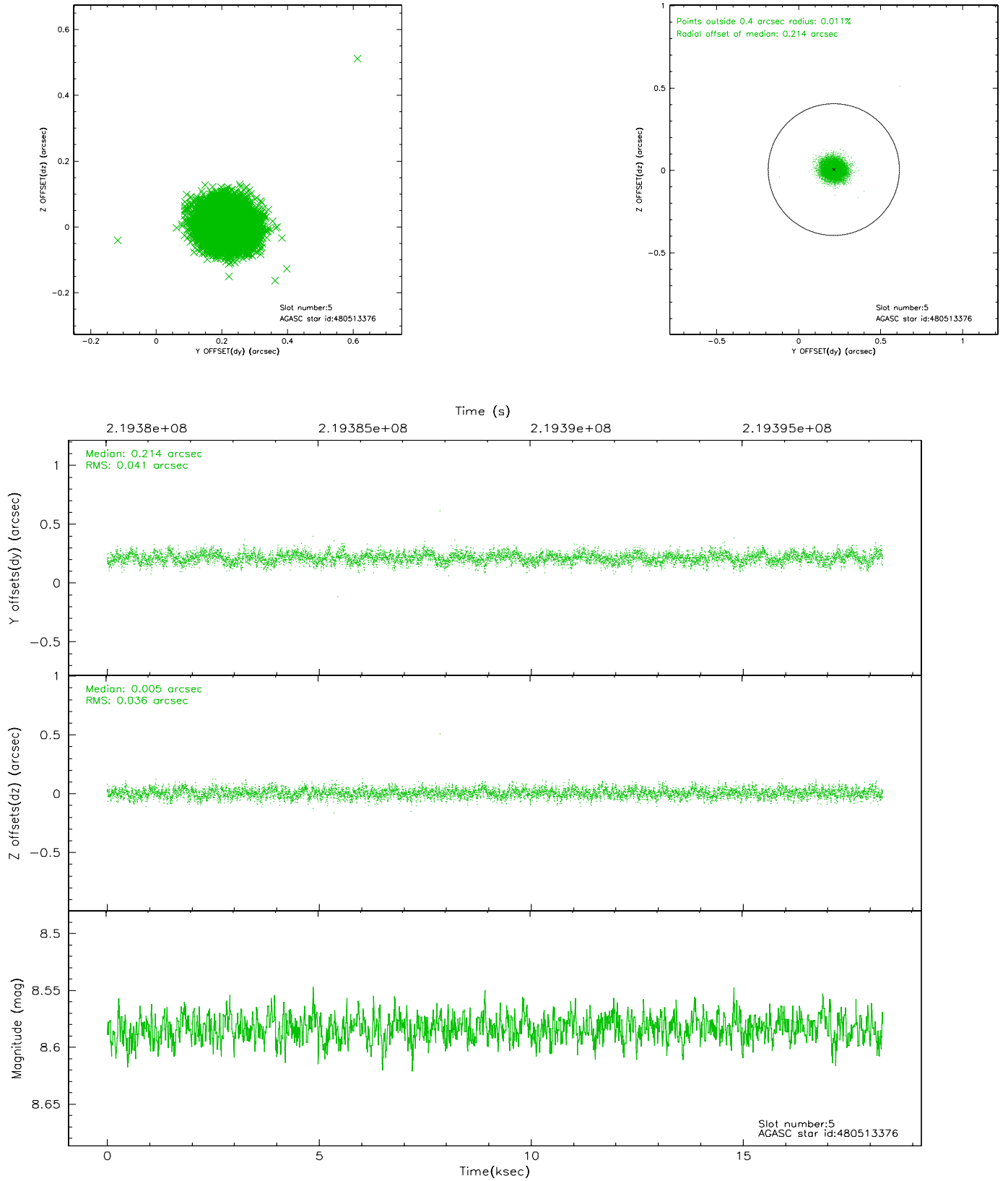
2.4.1 Slot 3



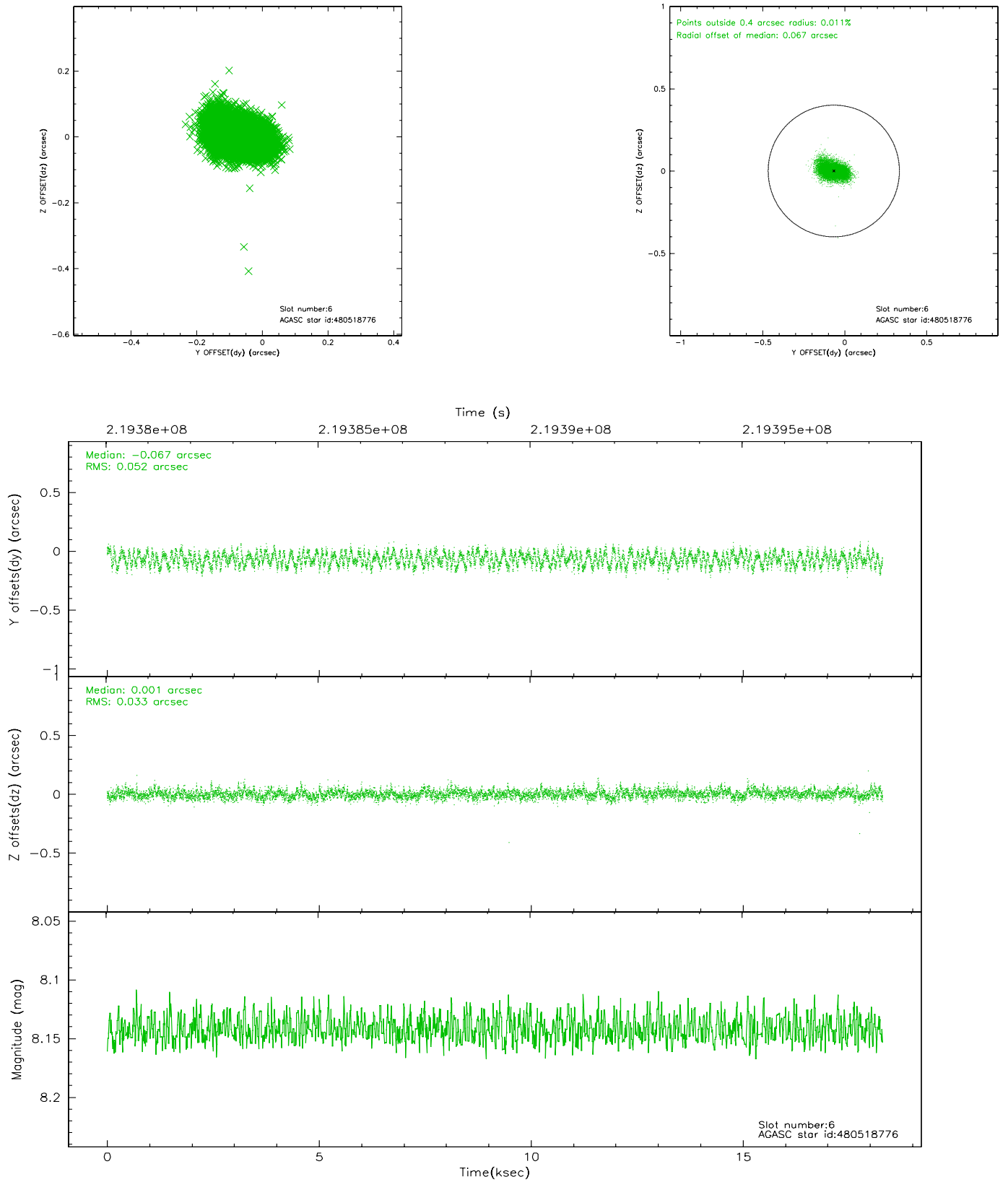
2.4.2 Slot 4



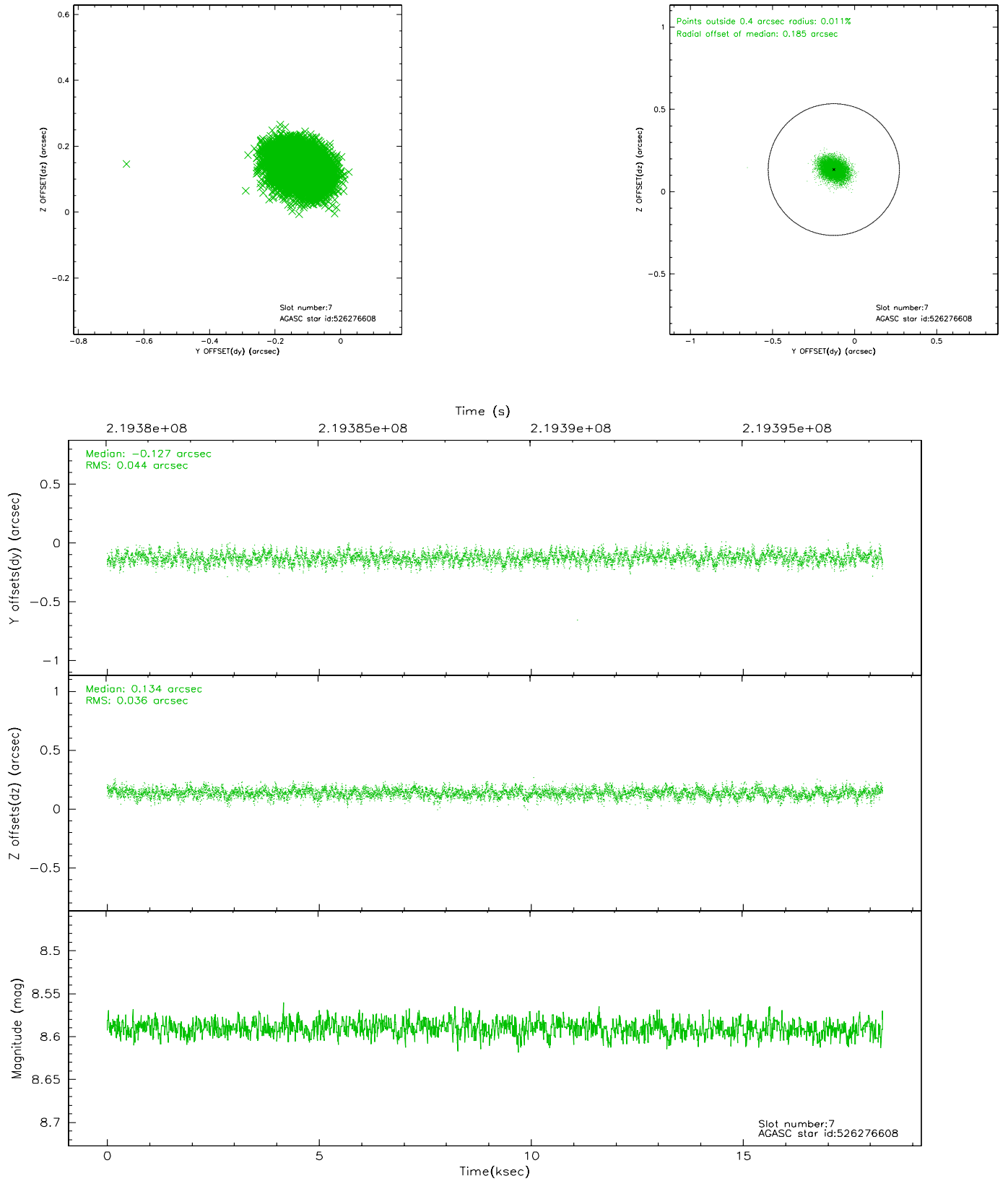
2.4.3 Slot 5



2.4.4 Slot 6

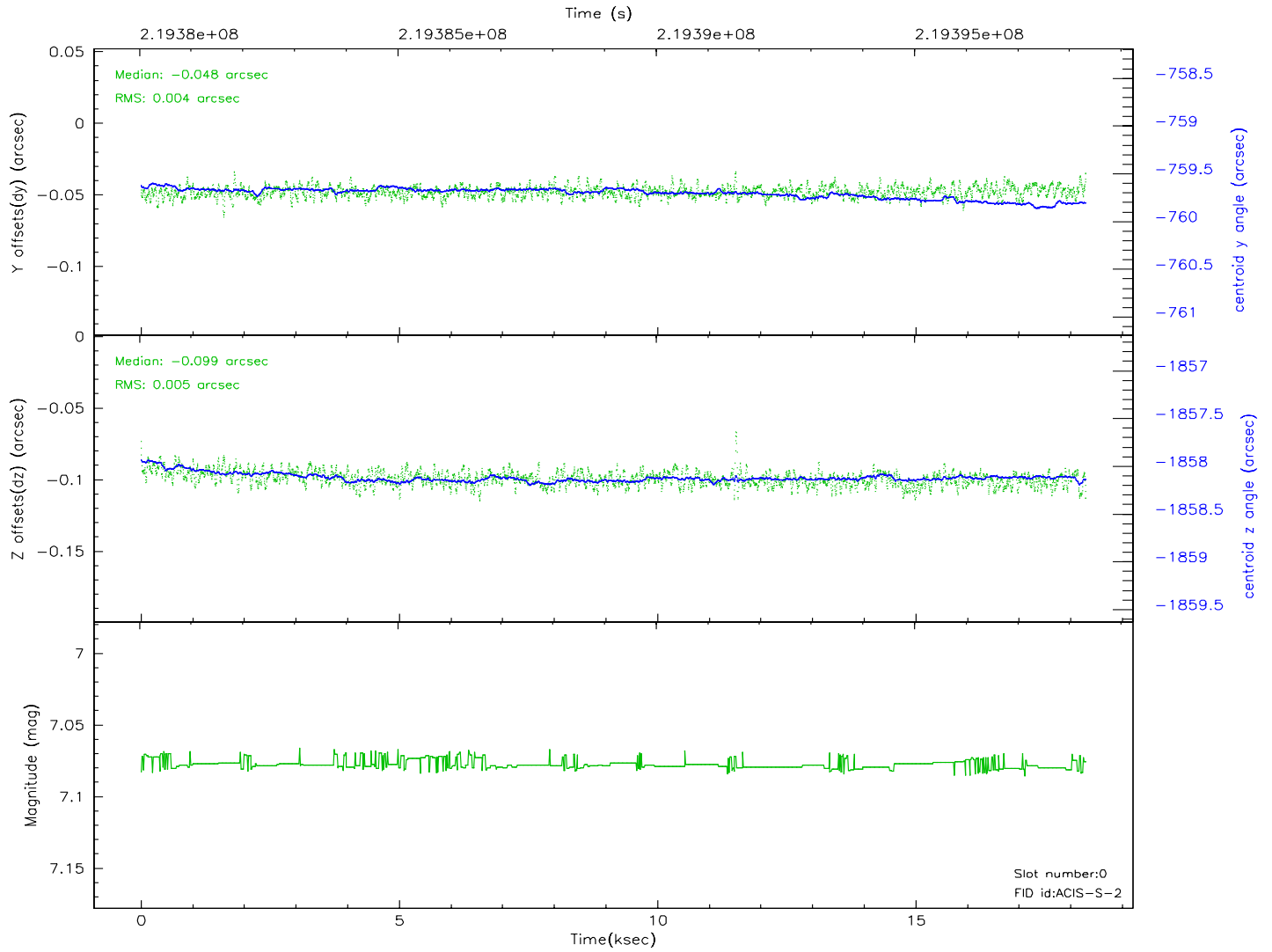
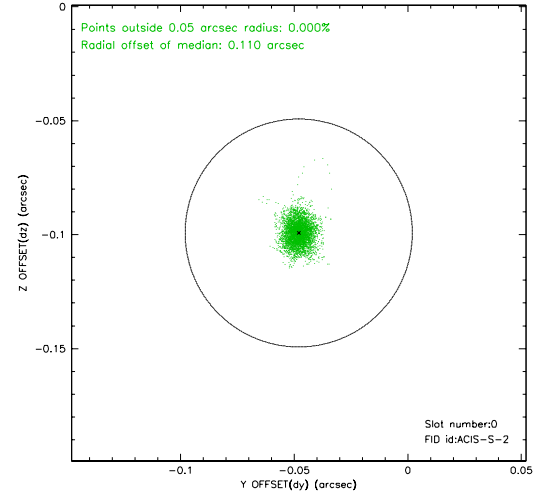
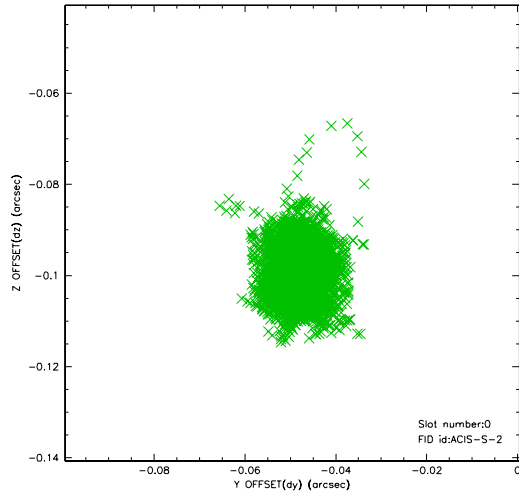


2.4.5 Slot 7

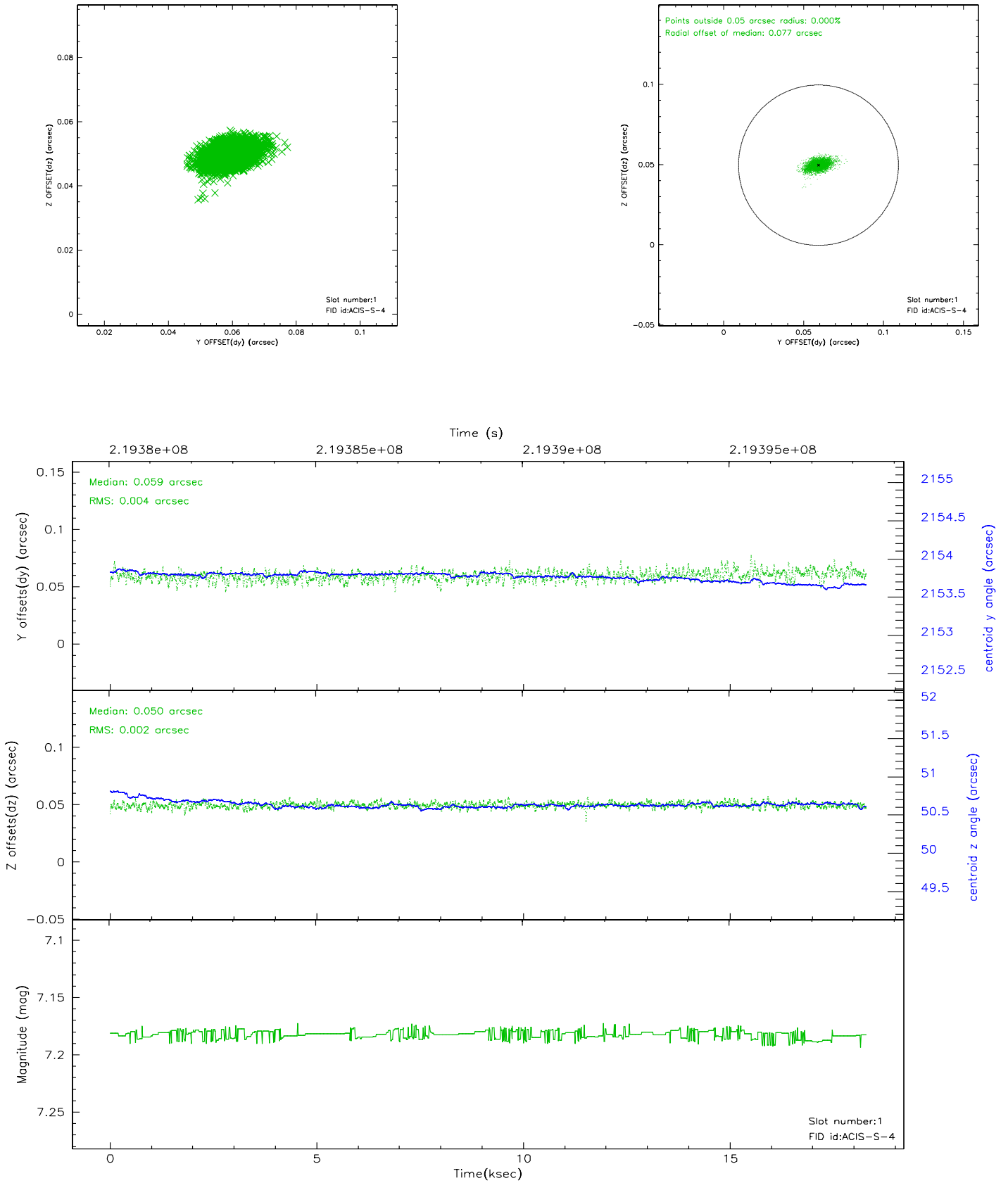


2.5 FID Slots

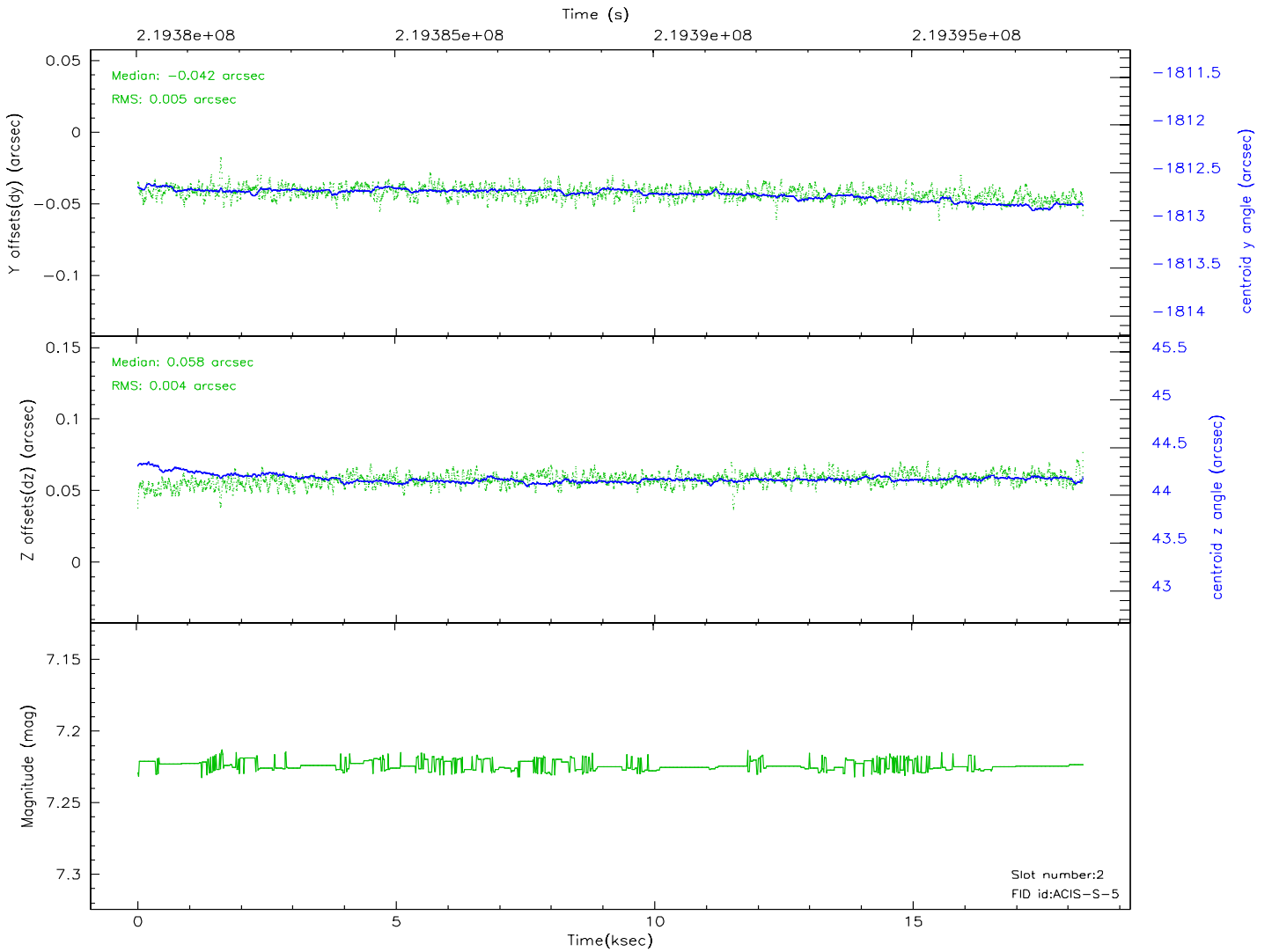
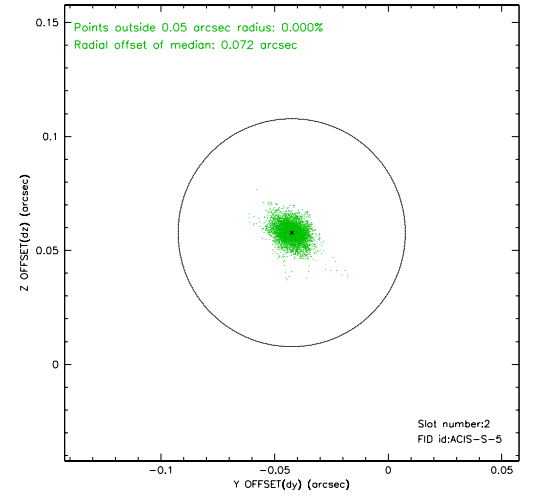
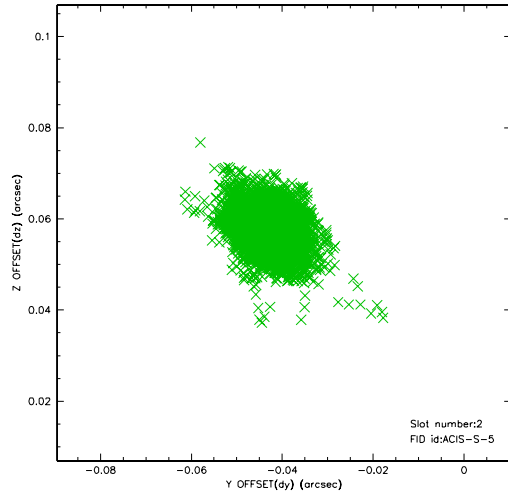
2.5.1 Slot 0



2.5.2 Slot 1



2.5.3 Slot 2

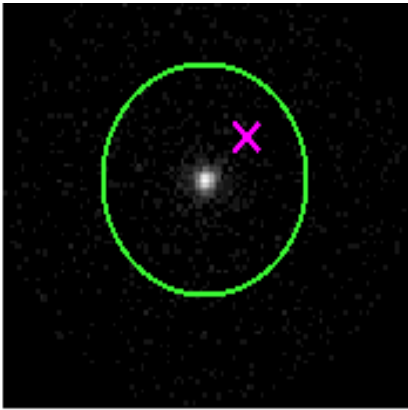


3 Gratings

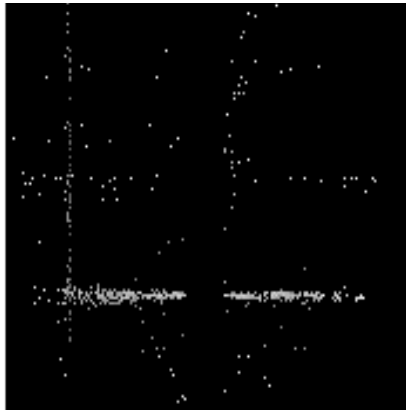
3.1 HEG Arm



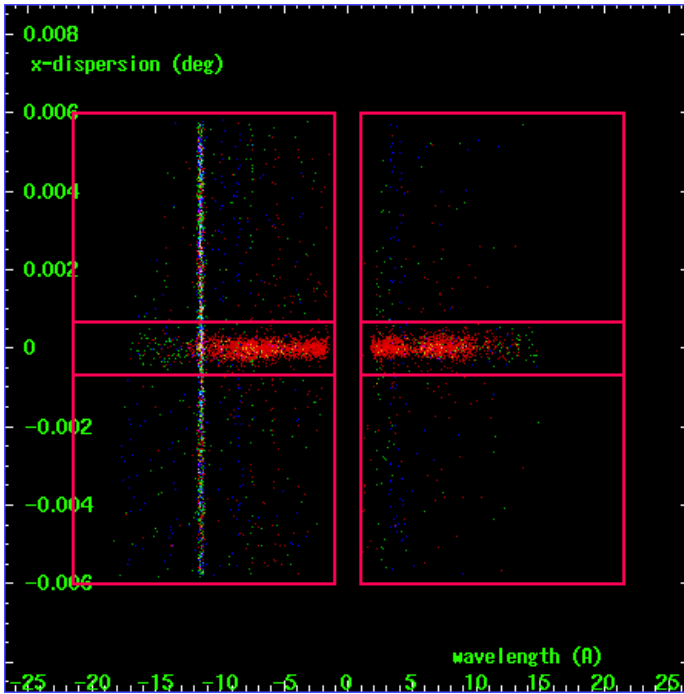
HEG Order Sort 123



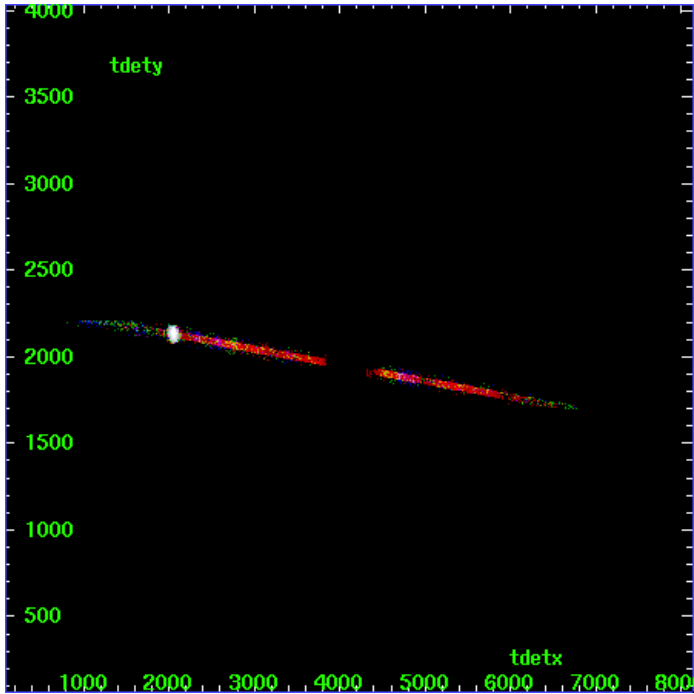
HEG Zero Order



HEG Order Sort ALL

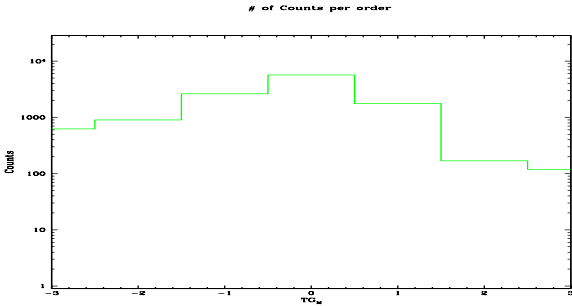


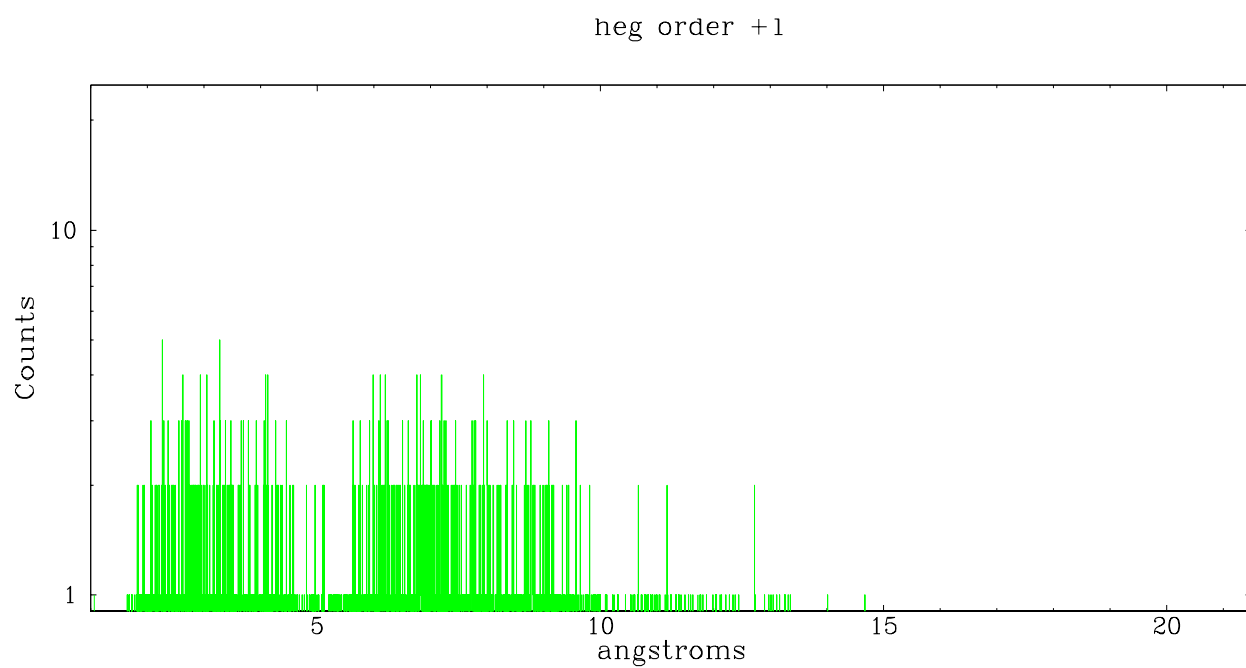
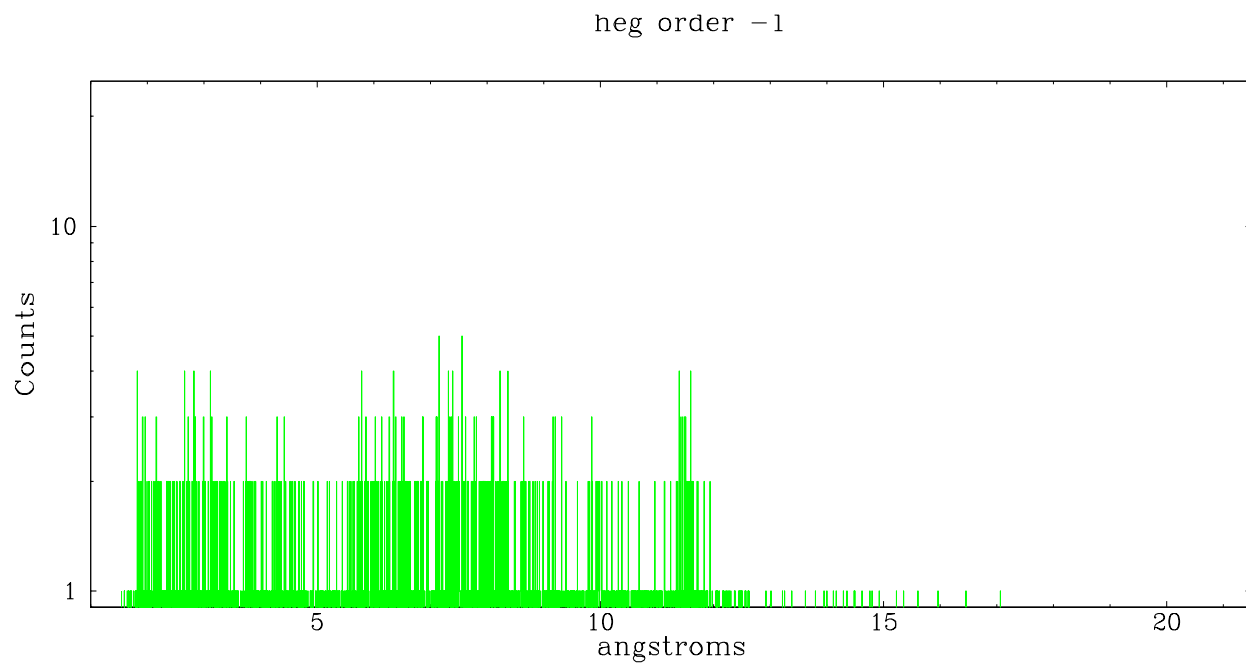
Spot Image HEG



Full Detector HEG

	order -3	order -2	order -1	order 0	order 1	order 2	order 3
Events	627	899	2628	5696	1772	169	119

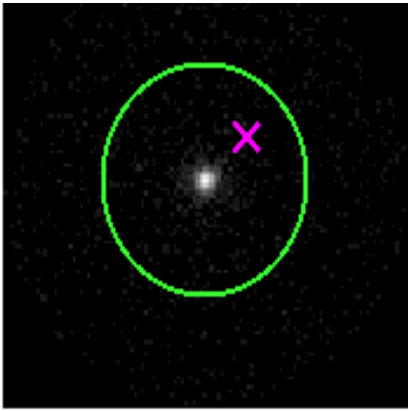




3.2 MEG Arm



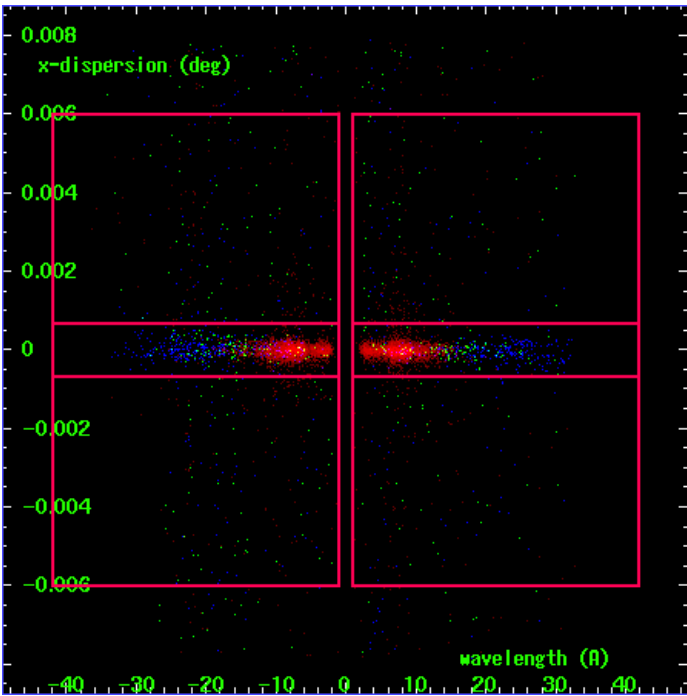
MEG Order Sort 123



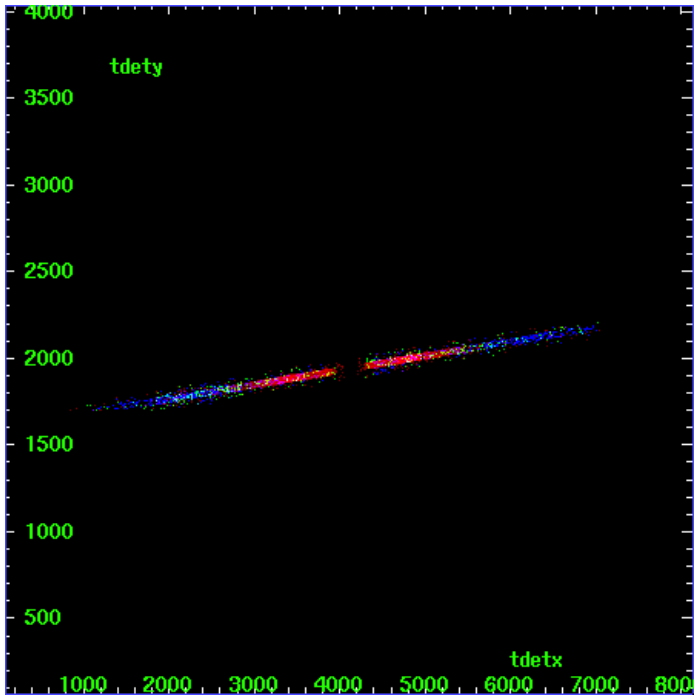
MEG Zero Order



MEG Order Sort ALL

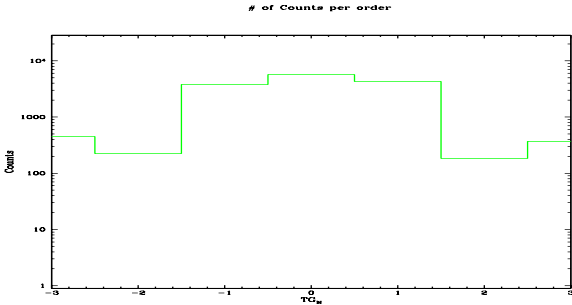


Spot Image MEG

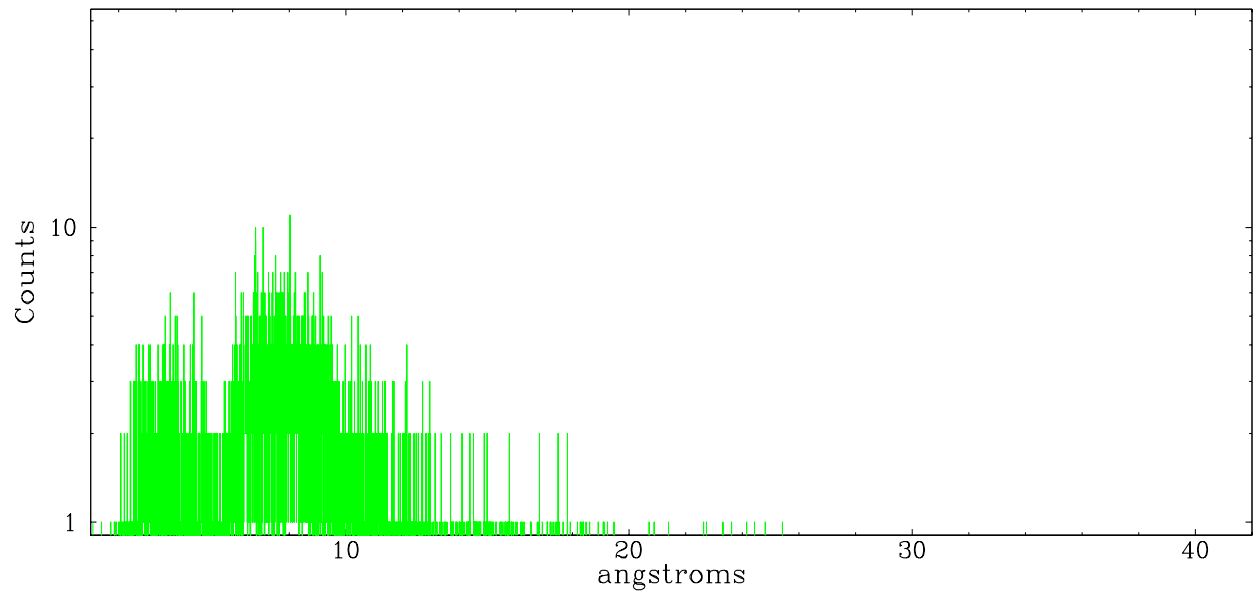


Full Detector MEG

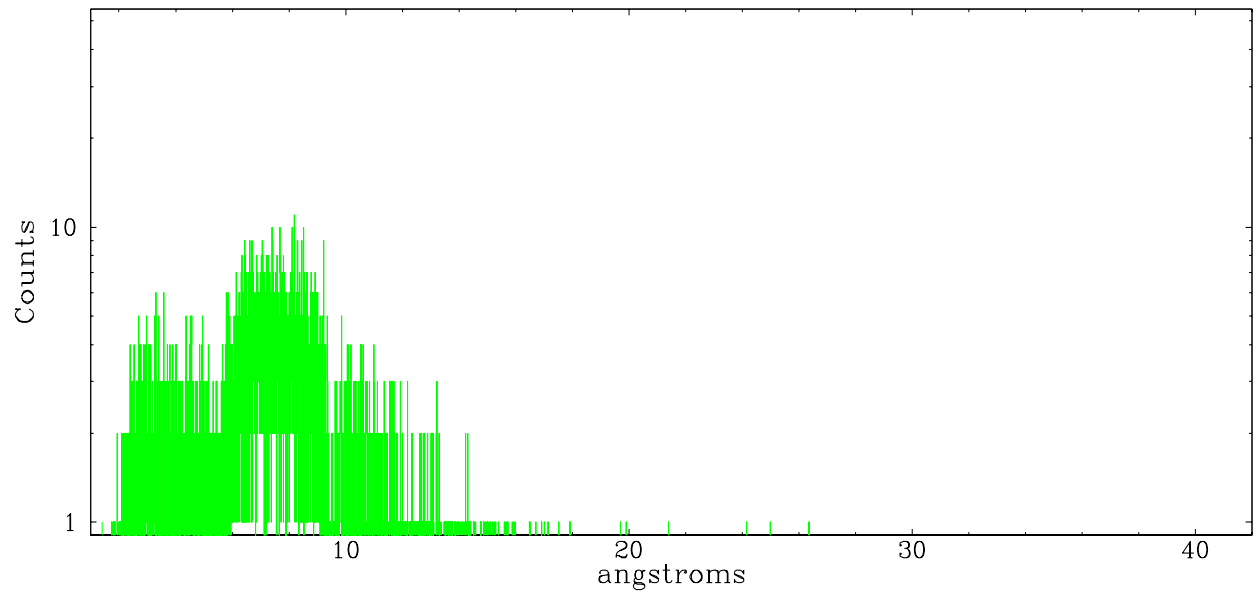
	order -3	order -2	order -1	order 0	order 1	order 2	order 3
Events	451	225	3783	5696	4306	184	370



meg order -1



meg order +1



A Summary

A.1 Status

V&V Scientist	Joy Nichols
V&V Date (YYYY-MM-DD)	2006.04.10
V&V Edition	1
V&V Disposition and Status	OK
V&V Charge Time	18.07099

A.2 Comments