

V&V Reference Report

L2 ASCDS Version : 7.6.7.2

Observation 4575 - L2 Version 001
Chandra X-Ray Center

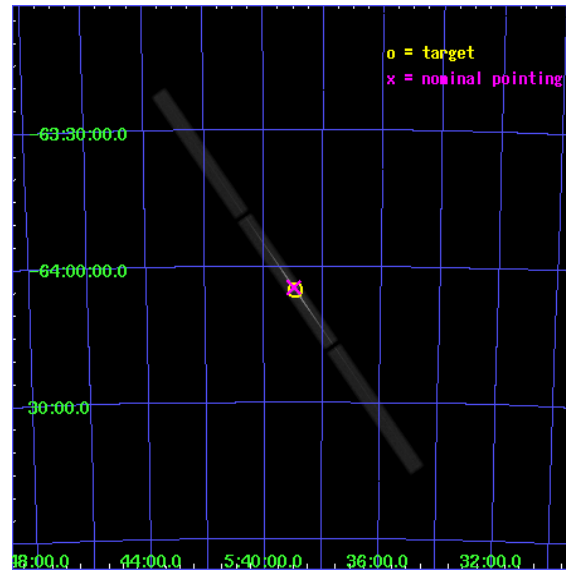
L2 Processing Date : May 25 2006

Contents

1	Front	2
2	OBI	3
2.1	OBI	3
2.1.1	Images	3
2.1.2	Parameters	4
2.1.3	Events	4
2.2	Compared Parameters	5
2.3	Aspect	6
2.4	Star Slots	9
2.4.1	Slot 3	9
2.4.2	Slot 4	10
2.4.3	Slot 5	11
2.4.4	Slot 6	12
2.4.5	Slot 7	13
2.5	FID Slots	14
2.5.1	Slot 0	14
2.5.2	Slot 1	15
2.5.3	Slot 2	16
3	Gratings	17
3.1	LETG Arm	17
A	Summary	19
A.1	Status	19
A.2	Comments	19

1 Front

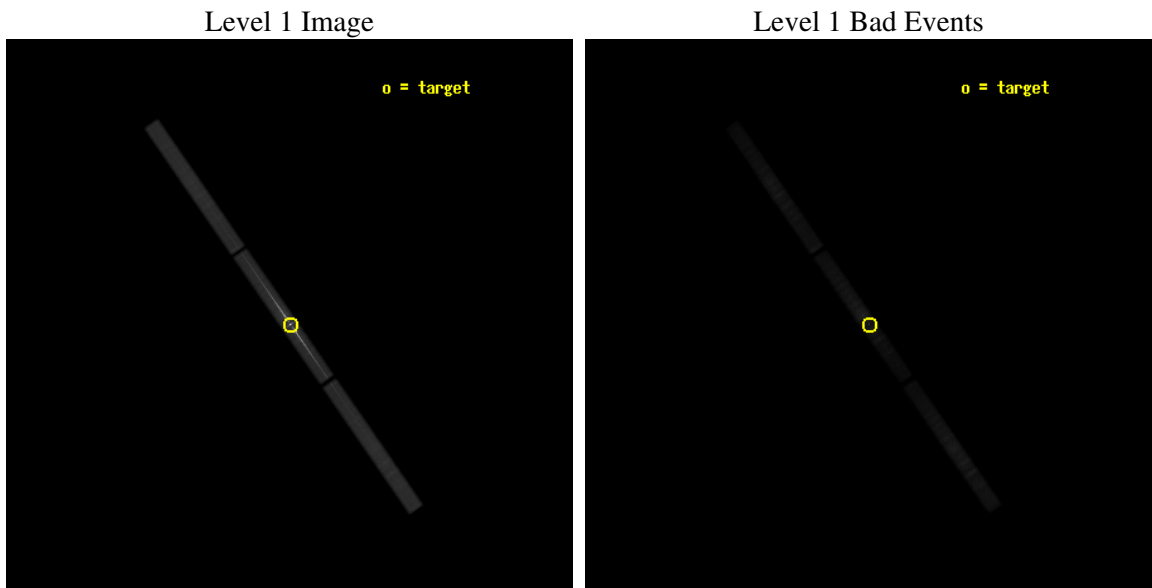
seq_num	400357
obs_id	4575
title	High Resolution Spectroscopy of LMC X-3: Probing Local Hot X-ray Absorbing Gas
observer	Dr. Taotao Fang
object	LMC X-3
ra_targ	84.734583
dec_targ	-64.084167
ra_nom	84.745638913813
dec_nom	-64.077035419419
roll_nom	235.07114365384
revision	3
ontime	19831.957123697
livetime	19824.023291292
l2events	1366368



2 OBI

2.1 OBI

2.1.1 Images



2.1.2 Parameters

obi_num	0
ascdsver	7.6.7.2
caldsver	3.2.2
date	2006-05-25T16:55:48
revision	3

sched_exp_time	20000.000000
ontime	20176.100888848
l1events	1924505

2.1.3 Events

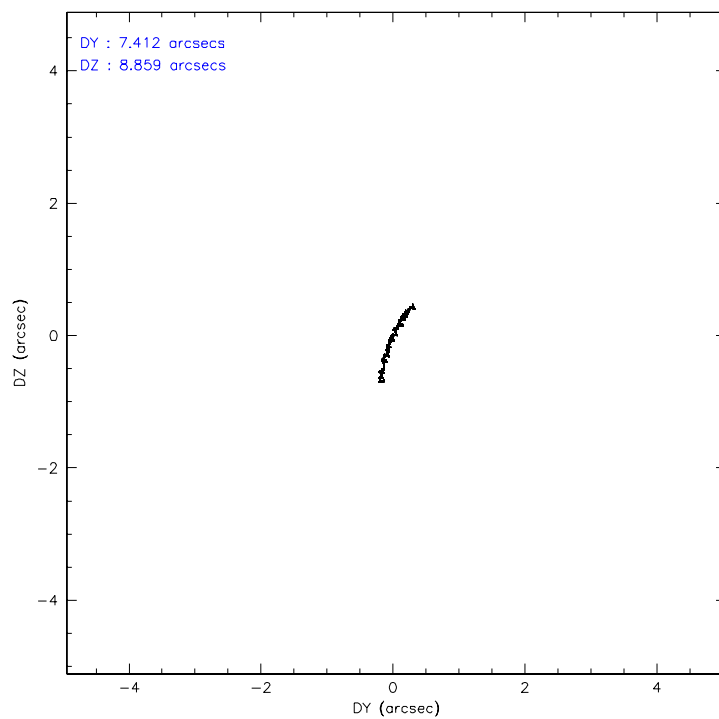
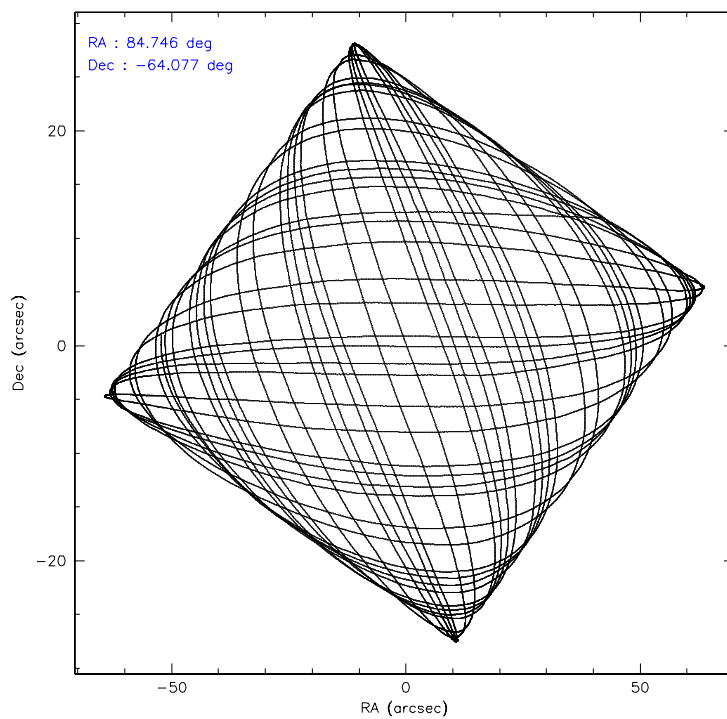
Level 1 Events

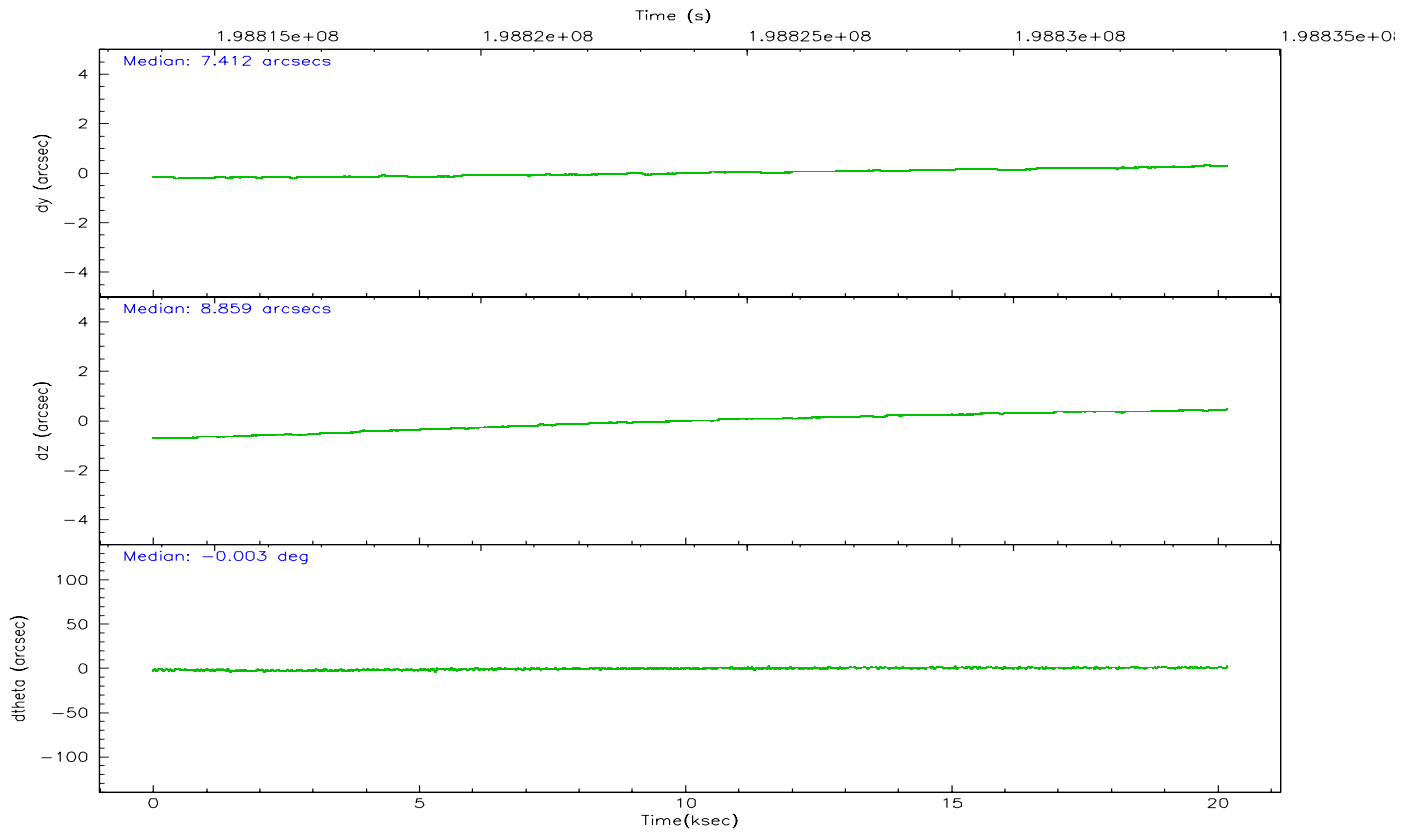
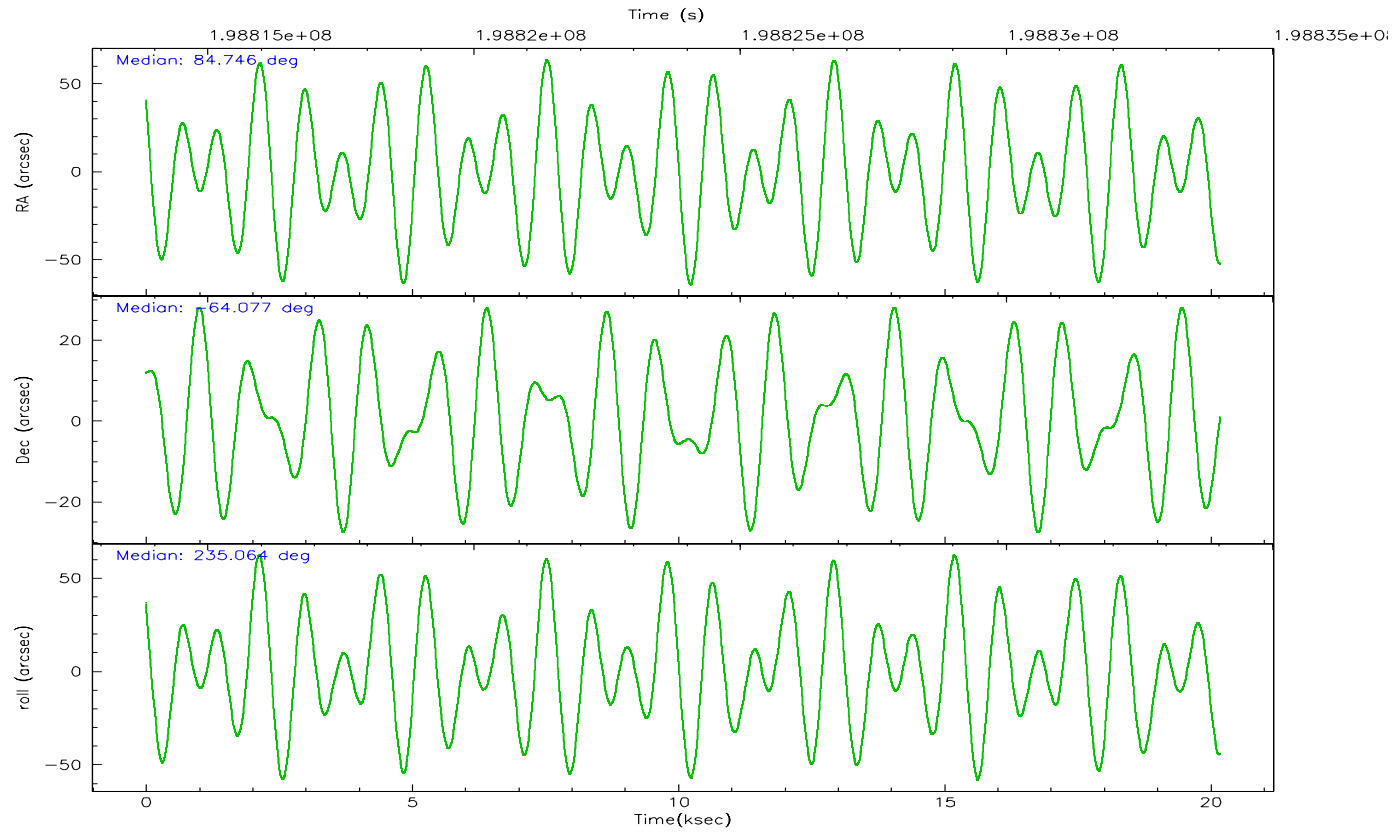
	segment 1	segment 2	segment 3
level 1 events	510220	897151	517134
rejected events	128969	140171	150570
rejected %	25%	15%	29%

2.2 Compared Parameters

Parameter	Planned	Actual	Parameter	Planned	Actual
Instrument	HRC	HRC	Obspar format version number	6	6
Detector	HRC-S	HRC-S	Obspar file type	PREDICTED	ACTUAL
Grating	LETG	LETG	Obspar update status	NONE	UPDATED
Data mode	OBSERVING	OBSERVING			
Observation mode	POINTING	POINTING			
Pointing RA	84.748080	84.74563891381345			
Pointing Dec	-64.048419	-64.07703541941905			
Pointing Roll	235.006003	235.0711436538364			
SIM focus pos (mm)	-1.429586	-1.428180813131781			
SIM defocus (mm)	0.1037507710433287	0.1051558262725154			
SIM translation stage pos (mm)	249.967976	249.9656843351905			
SIM translation stage offset (mm)	0.488	0.4902940583641566			
Observation start time	198814014.184000	198813127.03941			
Observation start date	2004-04-20T02:05:50	2004-04-20T01:52:07			
Observation end time	198834014.184000	198835461.27789			
Observation end date	2004-04-20T07:39:10	2004-04-20T08:04:21			

2.3 Aspect



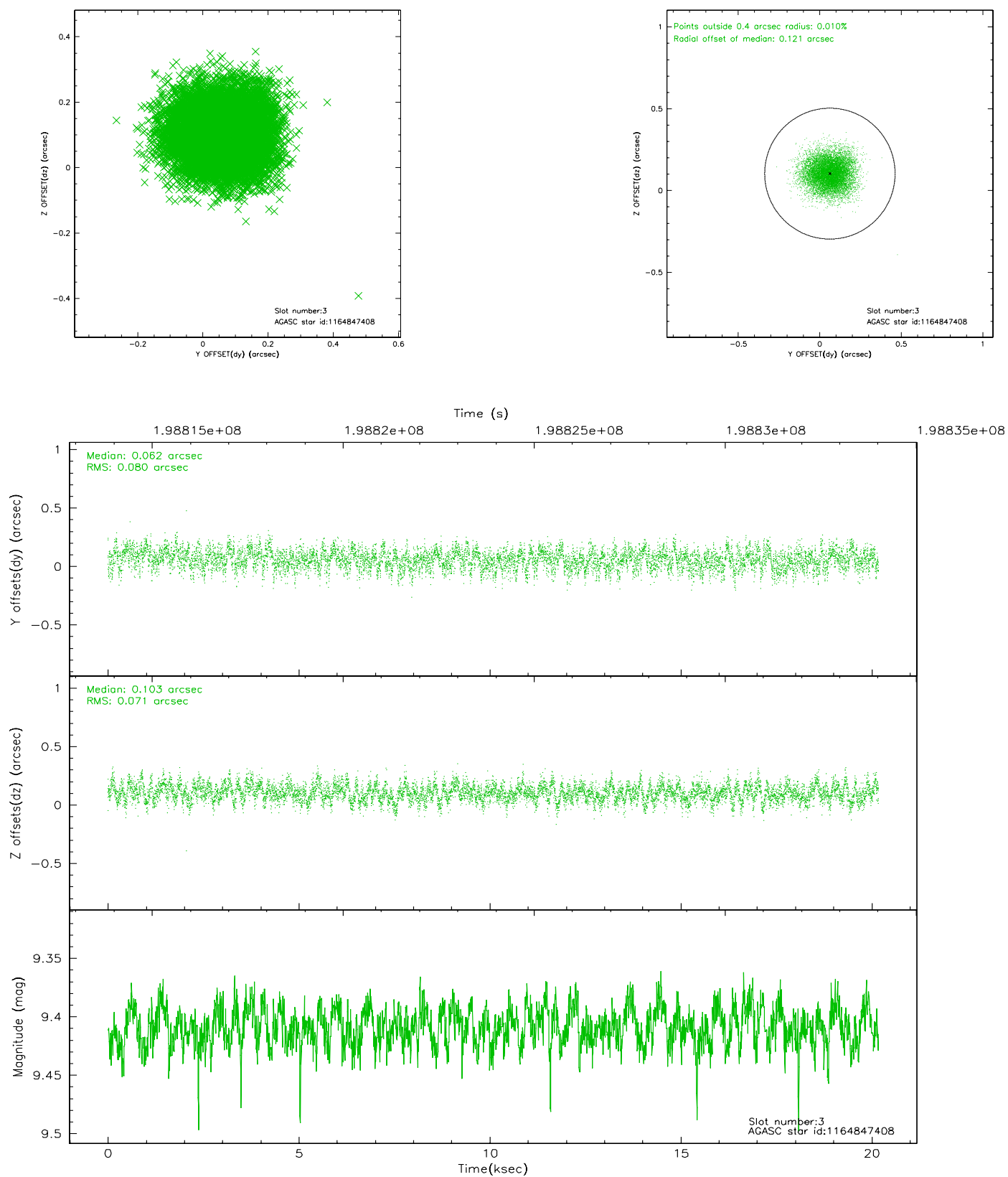


Slot Statistics

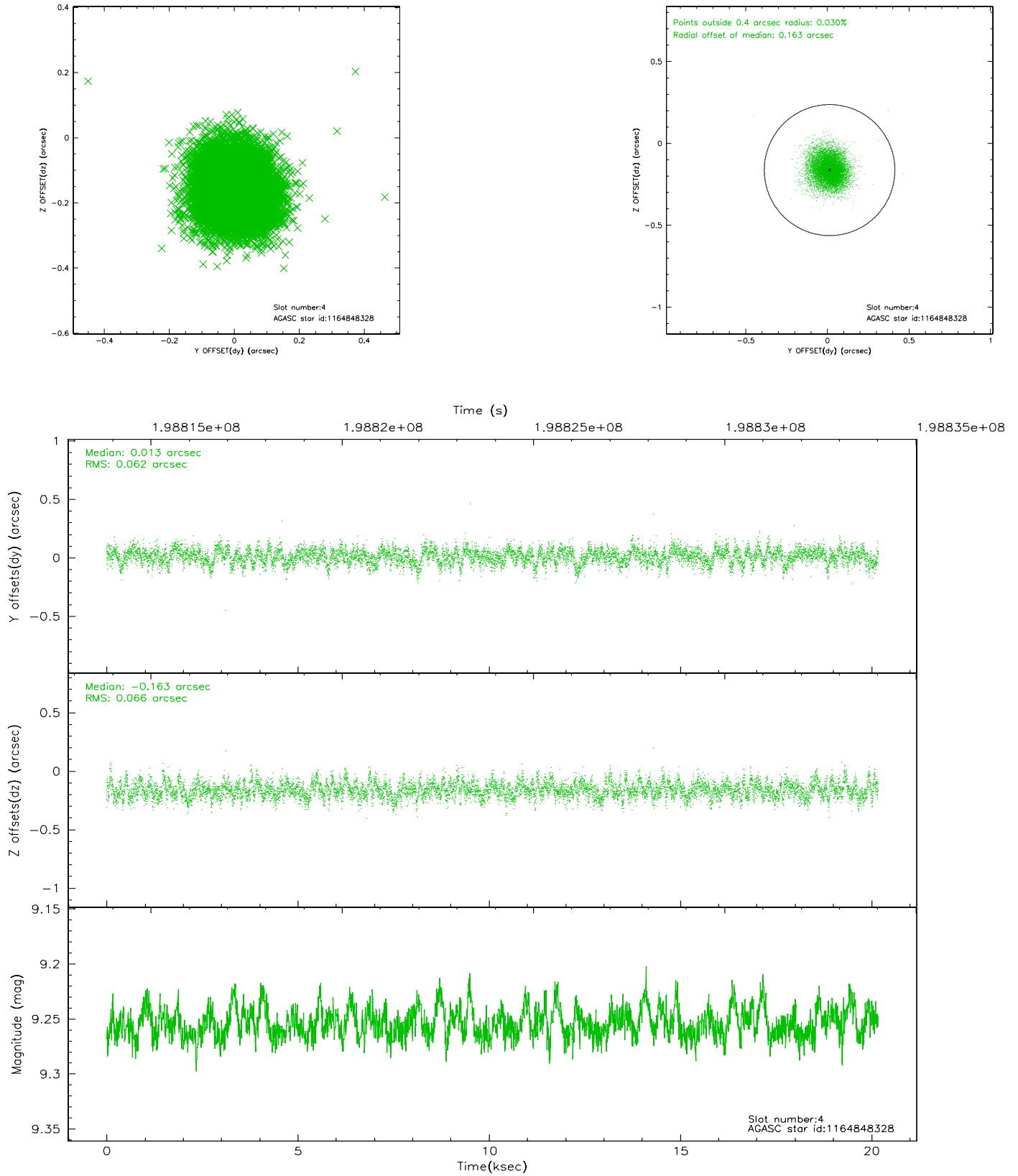
slot	status	id	mag	n_pts	med_dy	med_dz	dr1	dr2	ra	dec	mean_y	mean_z
0	FID	HRC-S-1	7.02	4922	0.145	-0.146	0.017	0.028	0.000000	0.000000	-1161.61	-447.16
1	FID	HRC-S-2	7.03	4922	0.121	-0.103	0.008	0.022	0.000000	0.000000	1237.81	-439.84
2	FID	HRC-S-3	7.04	4922	0.123	-0.052	0.015	0.026	0.000000	0.000000	-1164.11	582.38
3	GUIDE	1164847408	9.41	9840	0.062	0.103	0.114	0.183	85.132885	-64.859502	2055.75	2158.21
4	GUIDE	1164848328	9.25	9841	0.013	-0.163	0.096	0.157	84.701267	-64.093054	174.07	32.08
5	GUIDE	1166548256	8.77	9839	0.013	0.007	0.079	0.129	85.738698	-64.074093	-808.67	1337.27
6	GUIDE	1166544016	9.69	9766	-0.090	-0.209	0.140	0.231	86.089673	-64.349585	-293.16	2346.96
7	GUIDE	1164319000	10.38	9830	0.002	0.256	0.206	0.335	83.956337	-63.392005	-1197.09	-2395.99

2.4 Star Slots

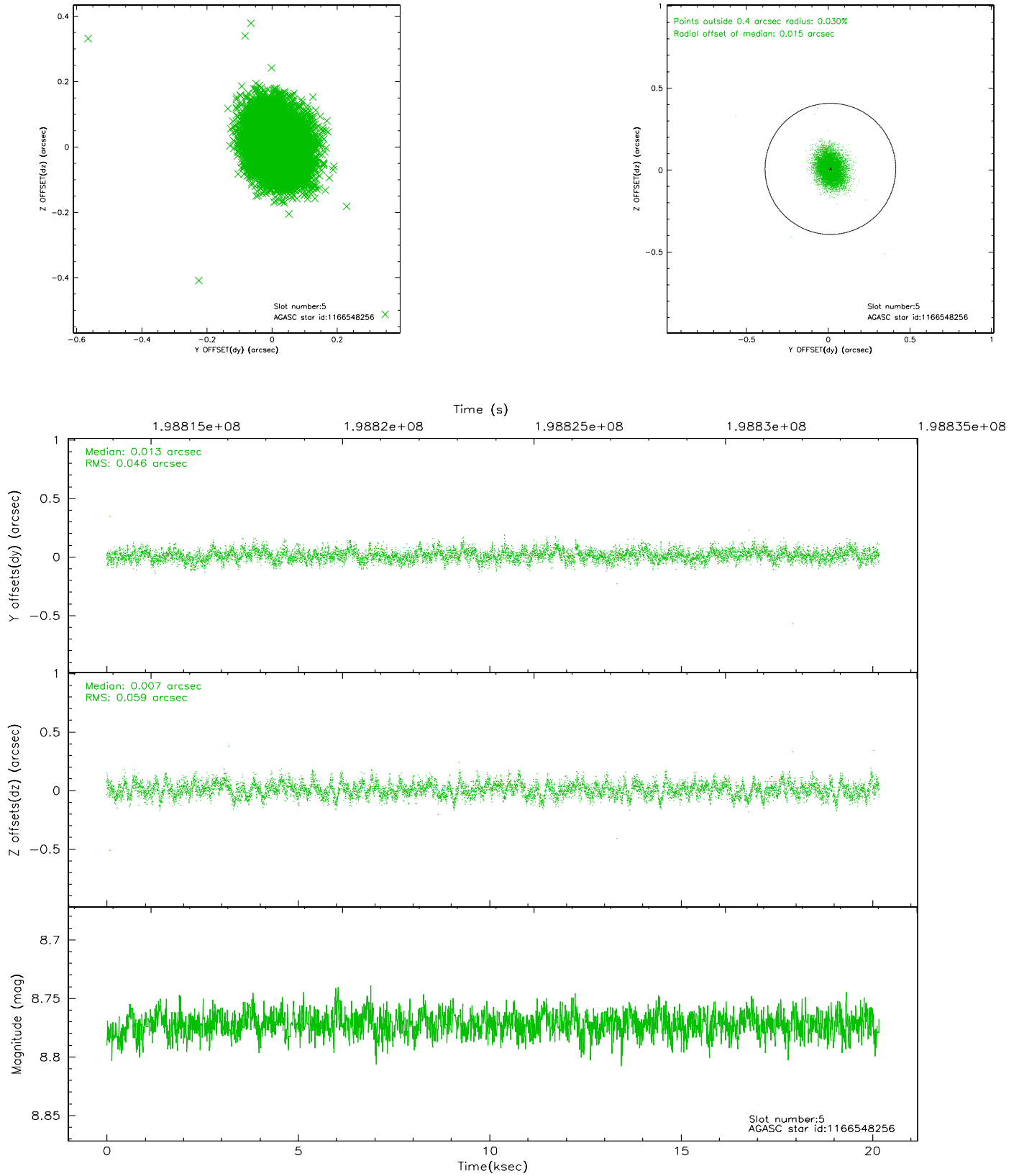
2.4.1 Slot 3



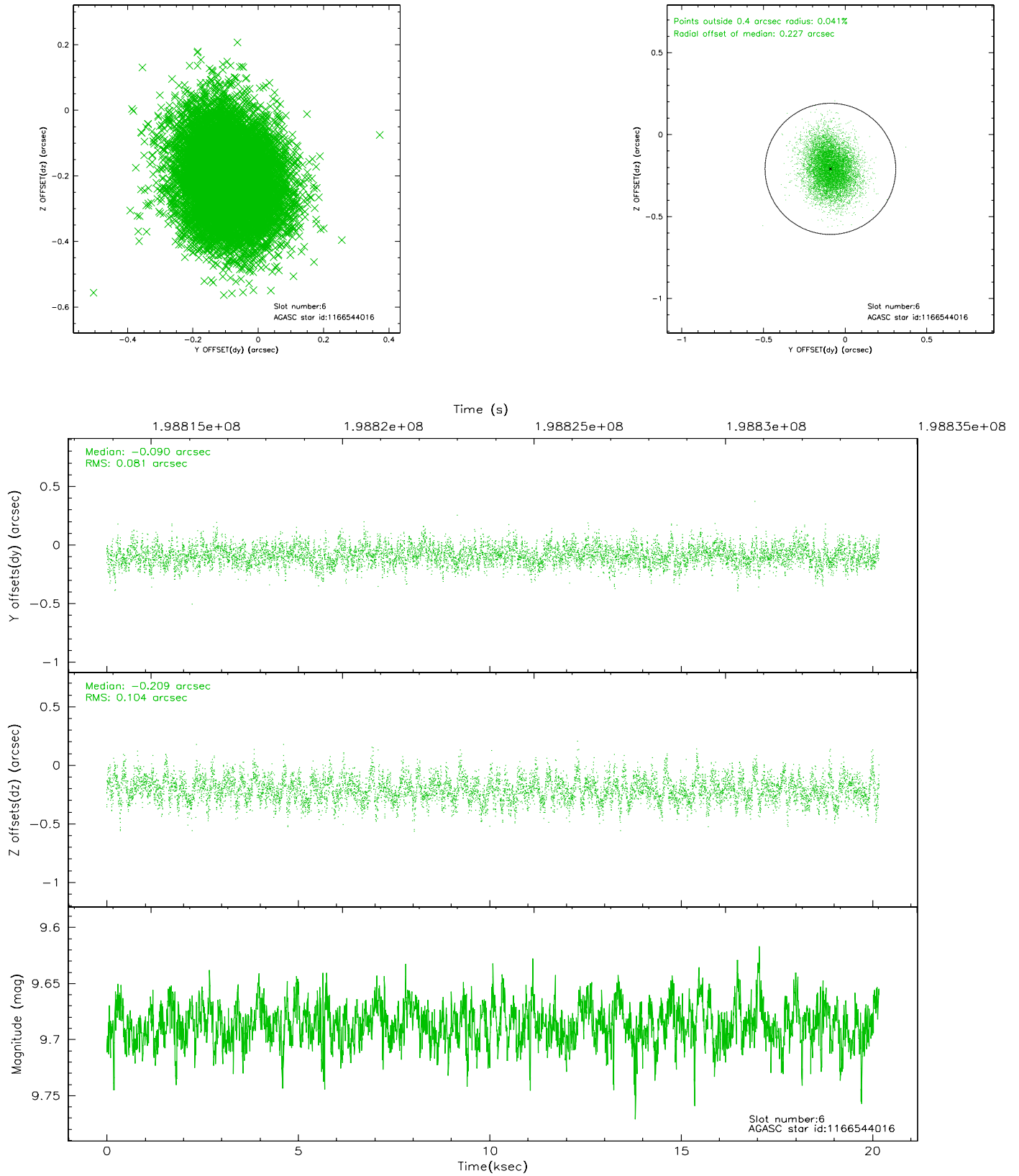
2.4.2 Slot 4



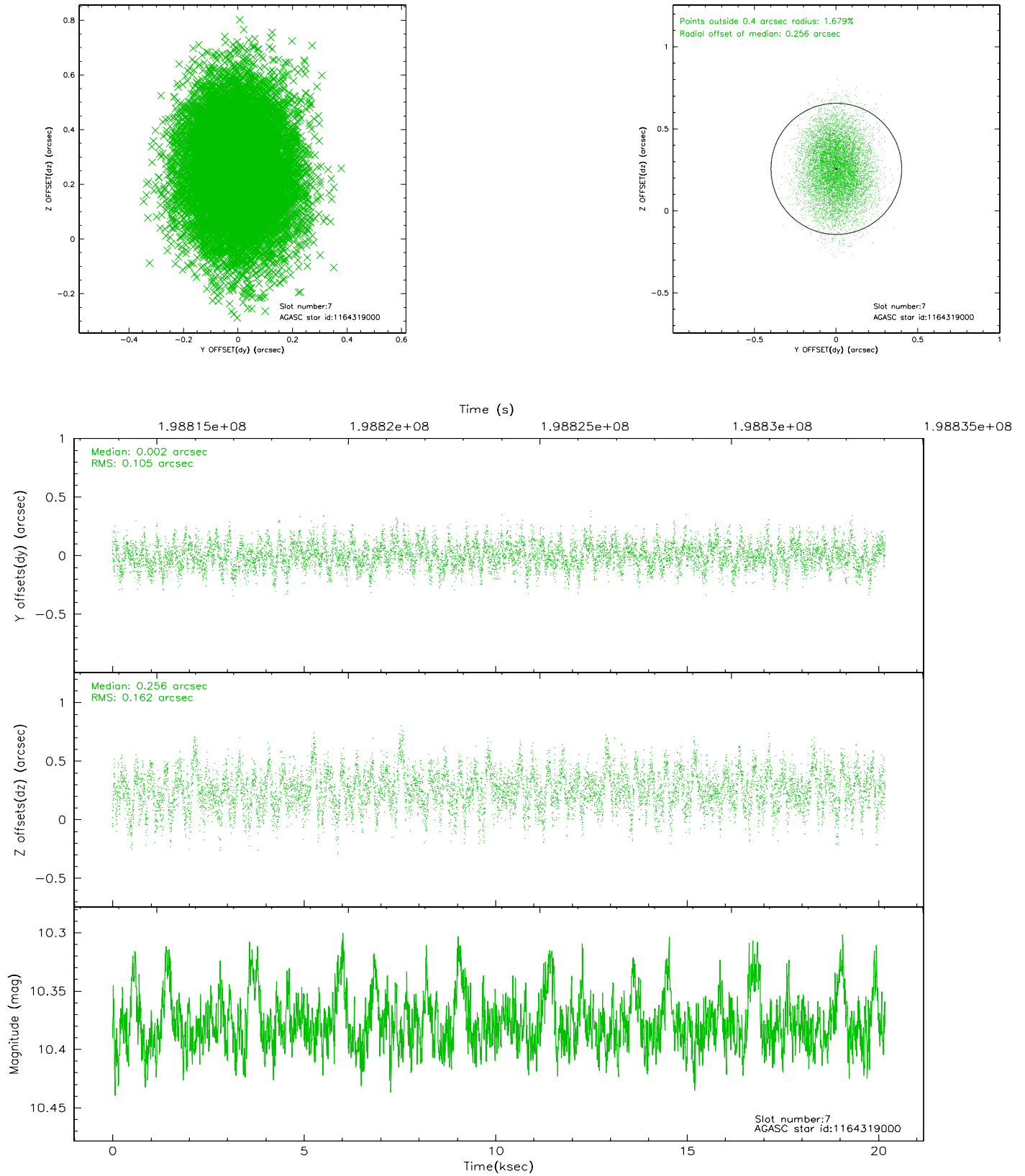
2.4.3 Slot 5



2.4.4 Slot 6

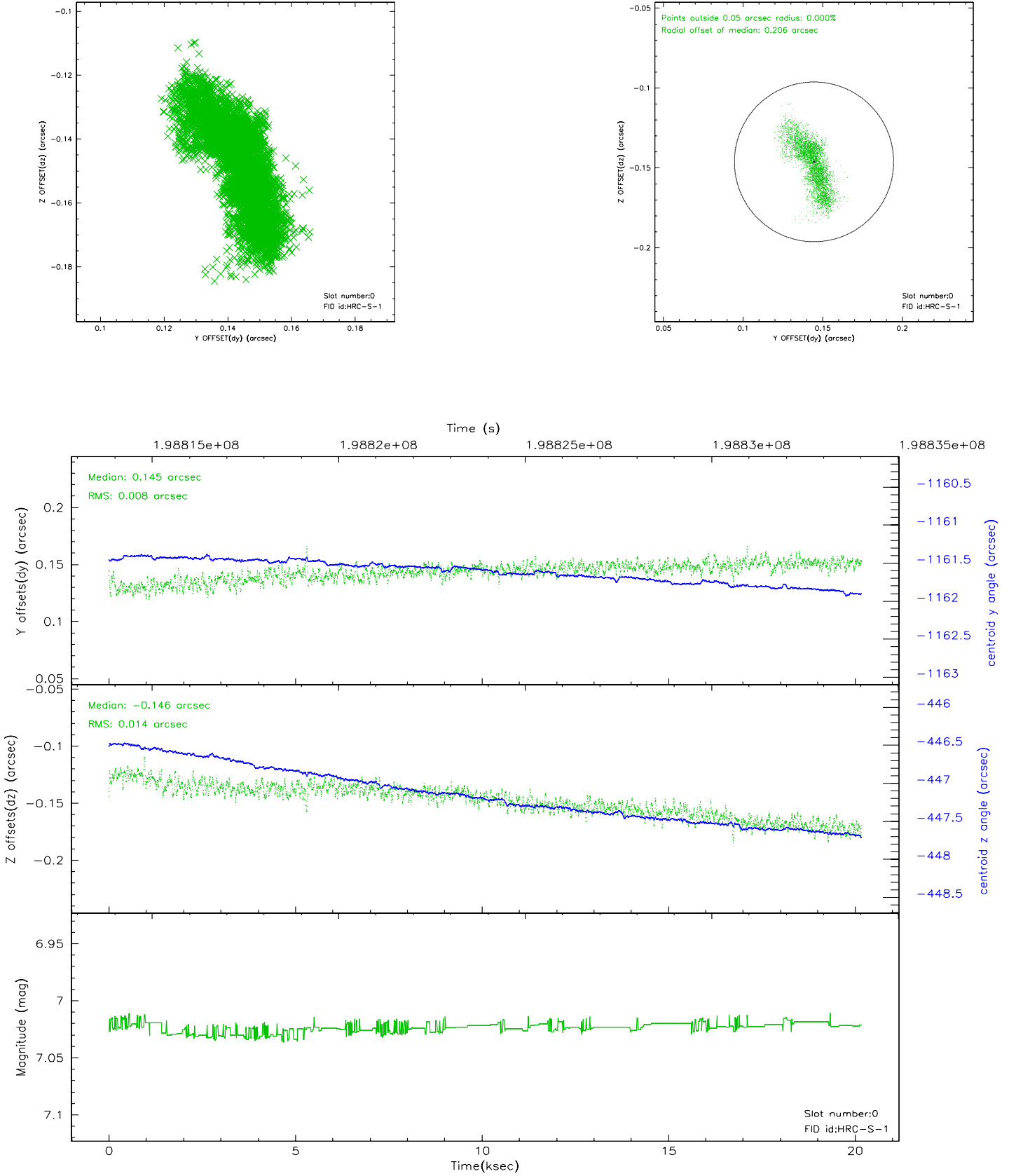


2.4.5 Slot 7

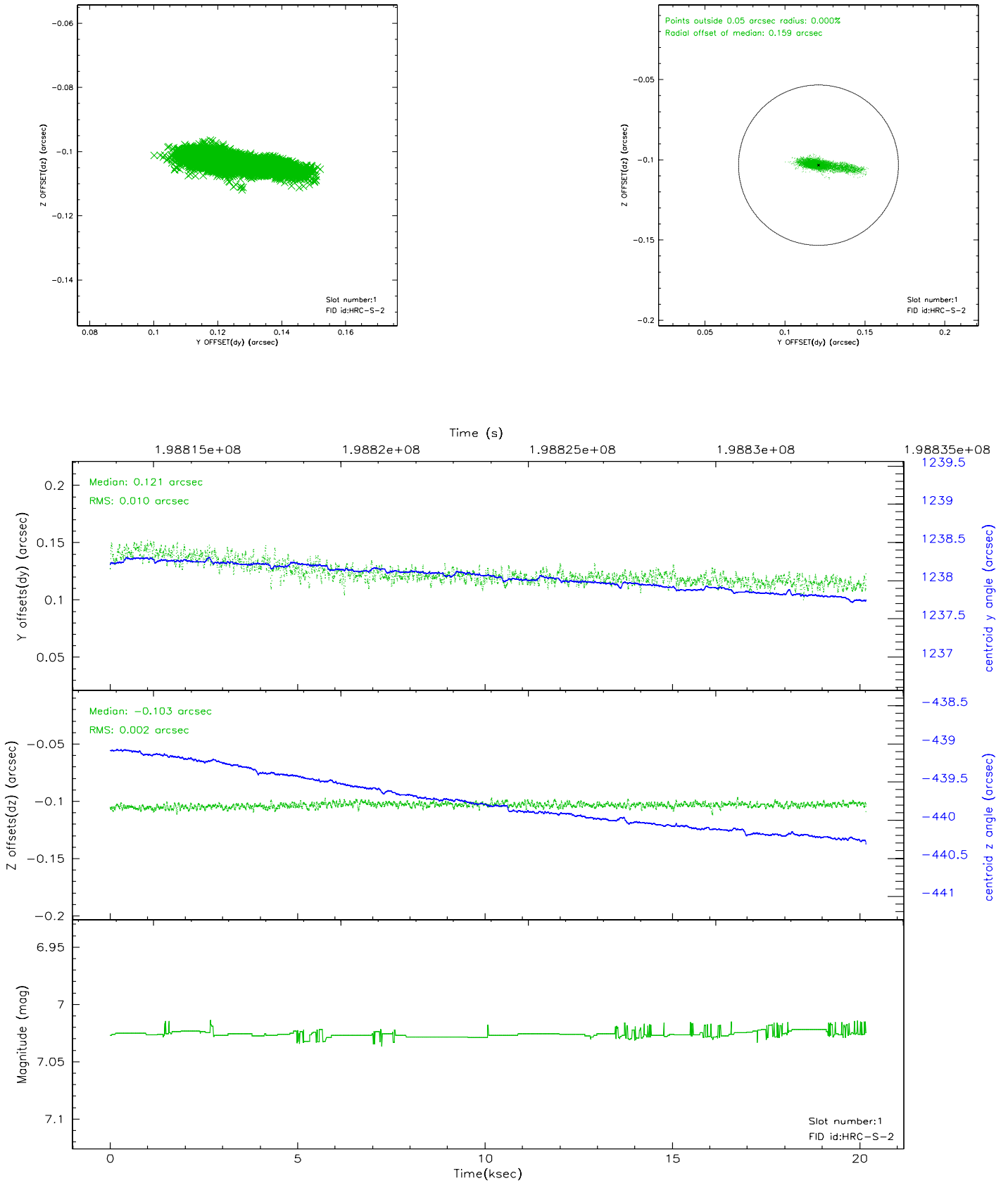


2.5 FID Slots

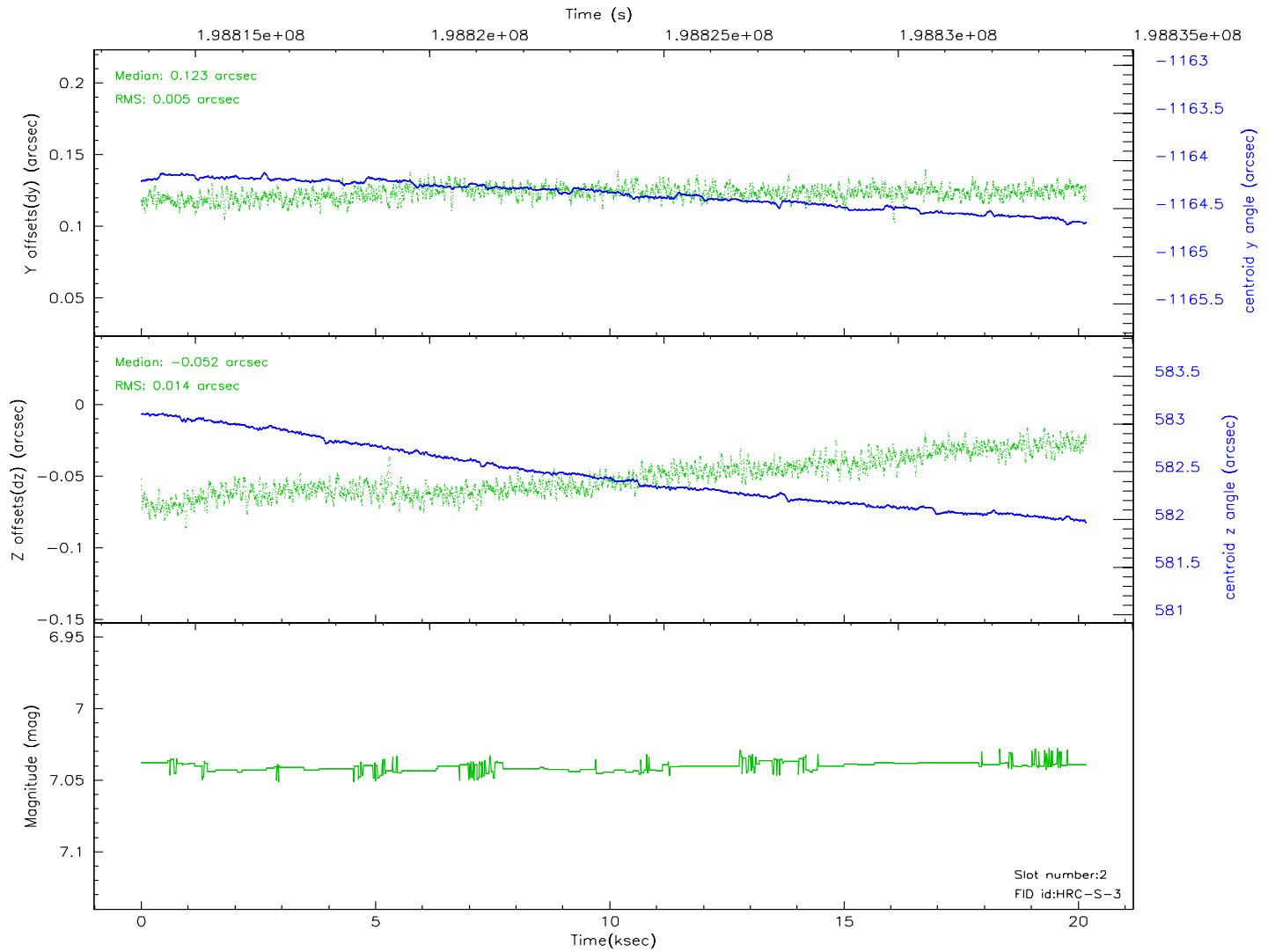
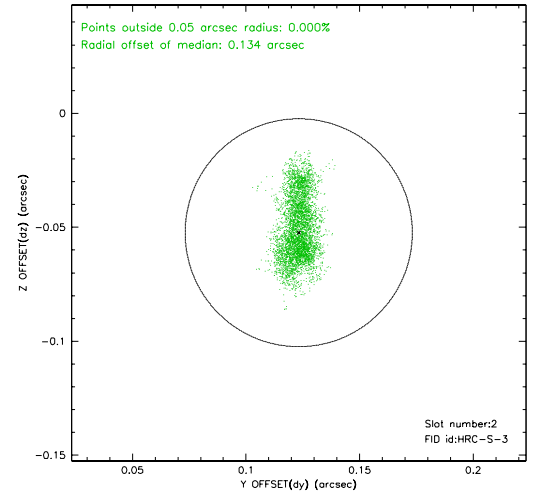
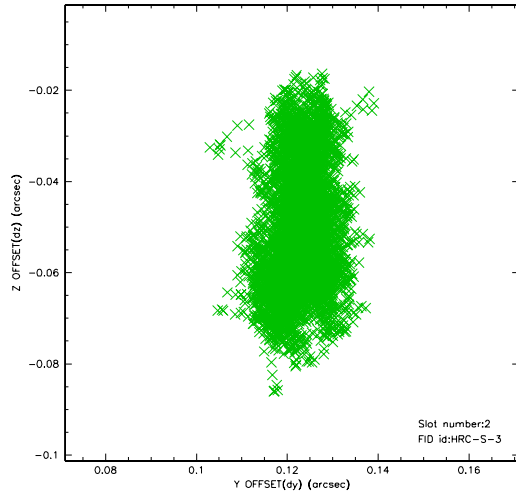
2.5.1 Slot 0



2.5.2 Slot 1

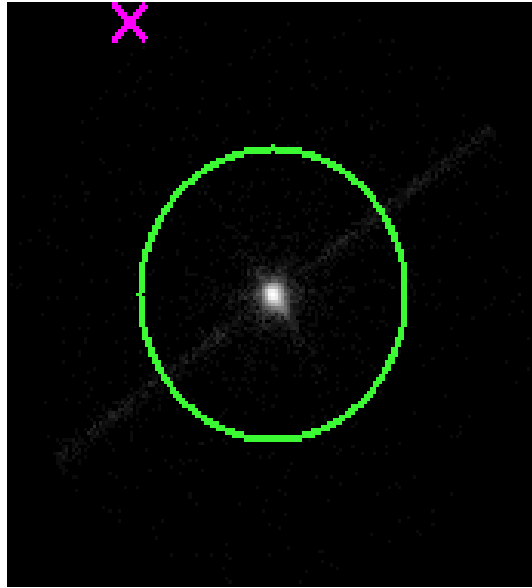


2.5.3 Slot 2



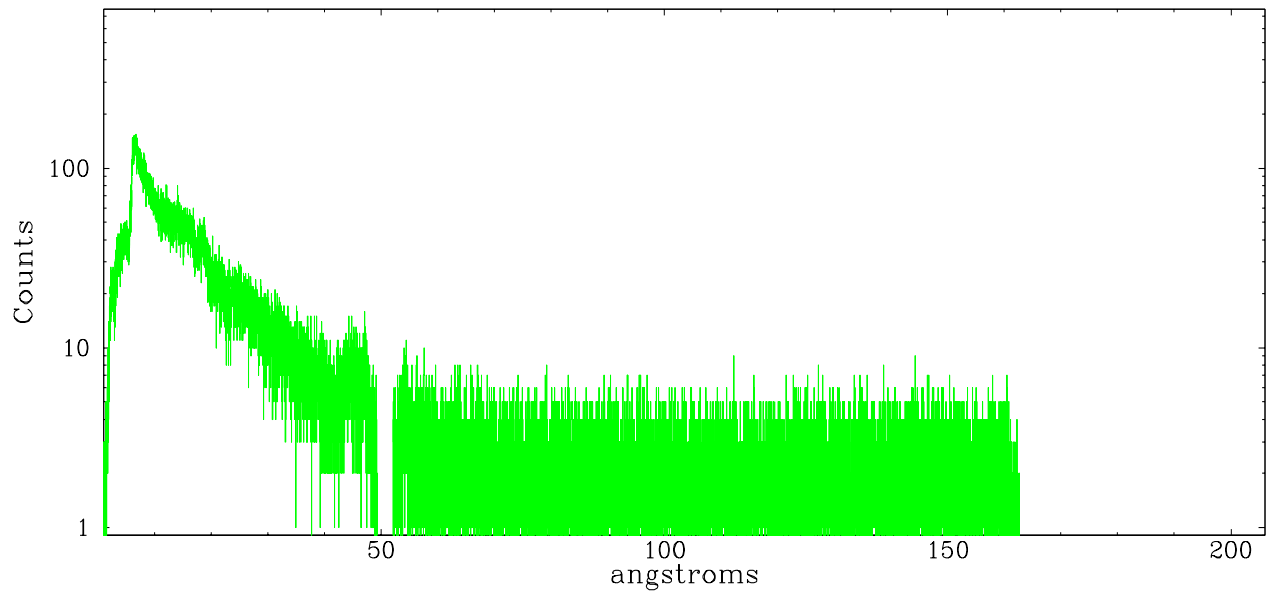
3 Gratings

3.1 LETG Arm

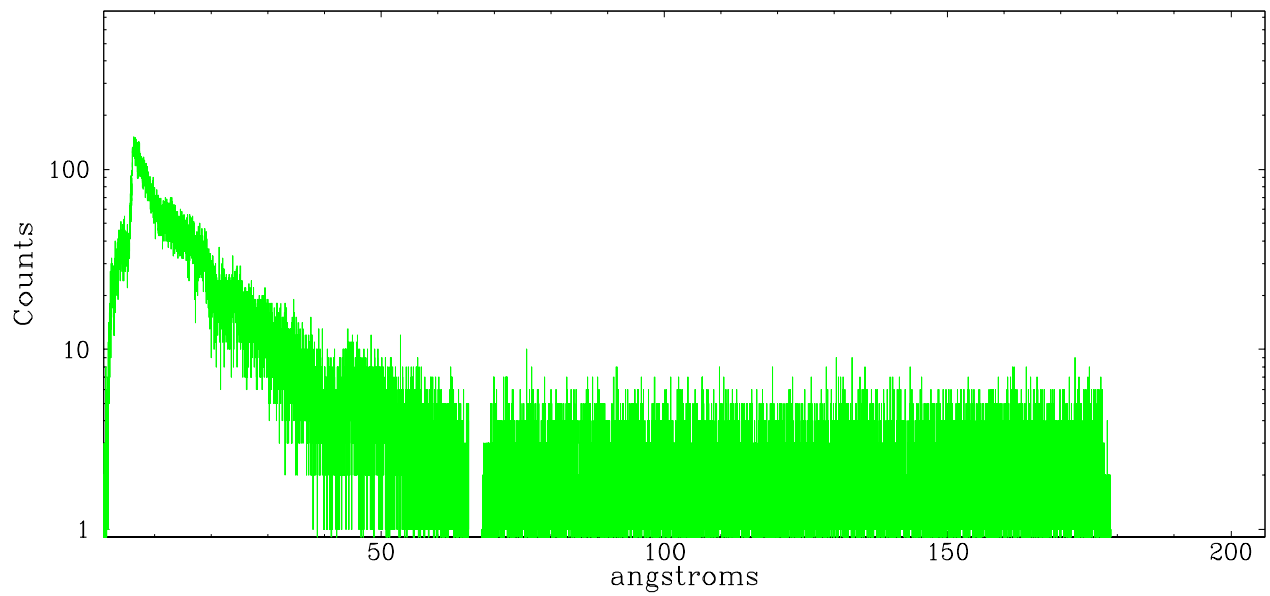


LETG Zero Order

leg order -1



leg order $+1$



A Summary

A.1 Status

V&V Scientist	Beth Sundheim
V&V Date (YYYY-MM-DD)	2006.05.25
V&V Edition	1
V&V Disposition and Status	OK
V&V Charge Time	19.831

A.2 Comments

The keywords DTCOR, EXPOSURE, and LIVETIME in the Level 2 event file and the

keyword DTCOR in the Level 1 event file have been incorrectly determined due to a software bug. The correct value of DTCOR can be found in the file DTFSTATS file that can be obtained by downloading the secondary data products. In most cases, the difference between the correct DTCOR value and the incorrect DTCOR value in the Level 2 event file is very small and does not affect the data analysis. However, there are cases of significant differences and the user is advised to use the DTCOR in the DTFSTATS file for analysis. Corrected data products will be made available in the archive as soon as feasible.