

V&V Reference Report

L2 ASCDS Version : 7.6.7.2

Observation 4561 - L2 Version 001
Chandra X-Ray Center

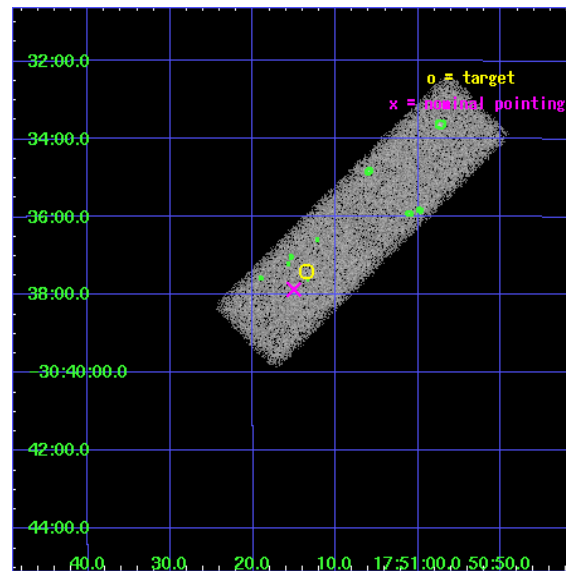
L2 Processing Date : May 23 2006

Contents

1	Front	2
2	OBI	3
2.1	OBI	3
2.1.1	Images	3
2.1.2	Bias	3
2.1.3	Parameters	4
2.1.4	Events	4
2.2	Compared Parameters	5
2.3	Aspect	6
2.4	Star Slots	9
2.4.1	Slot 3	9
2.4.2	Slot 4	10
2.4.3	Slot 5	11
2.4.4	Slot 6	12
2.4.5	Slot 7	13
2.5	FID Slots	14
2.5.1	Slot 0	14
2.5.2	Slot 1	15
2.5.3	Slot 2	16
3	Point Sources	17
A	Summary	18
A.1	Status	18
A.2	Comments	18

1 Front

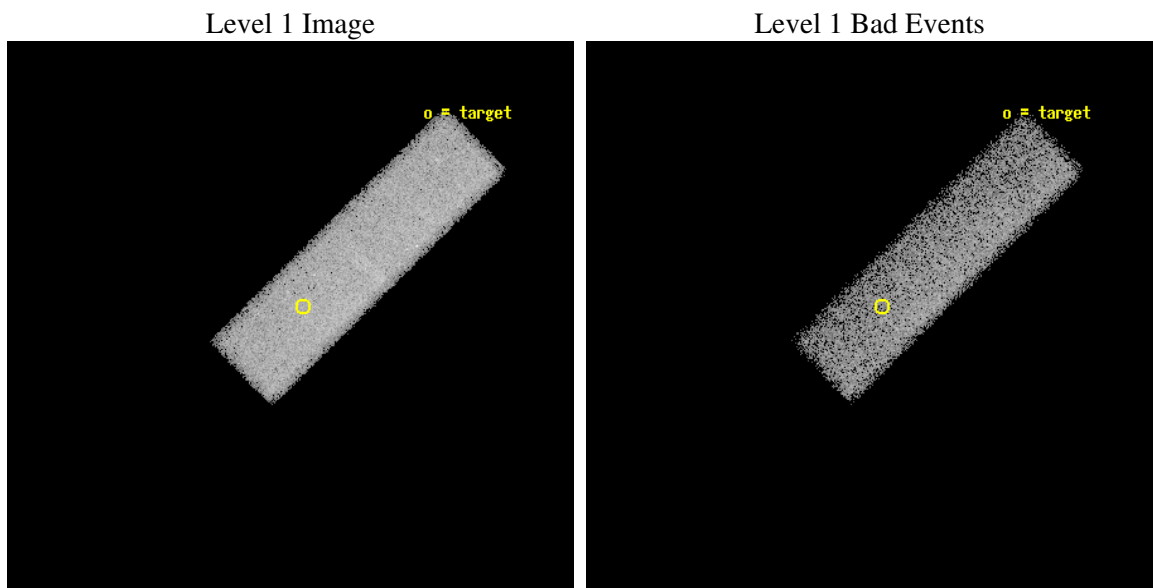
seq_num	400344
obs_id	4561
title	Chandra observations of accretion-driven millisecond X-ray pulsars in quiescence
observer	Dr. Rudy Wijnands
object	XTE J1751-305
dtcycle	0
cycle	P
ra_targ	267.80625
dec_targ	-30.623167
ra_nom	267.81274222768
dec_nom	-30.631026940159
roll_nom	315.4985733631
revision	2
ontime	45183.200673282
livetime	42978.408326151
ontime7	45183.200673282
l2events	47869



2 OBI

2.1 OBI

2.1.1 Images



2.1.2 Bias

Chip 7



2.1.3 Parameters

obi_num	0
ascdsver	7.6.7.2
caldbver	3.2.2
date	2006-05-23T21:22:16
revision	2

sched_exp_time	45000.000000
ontime	46915.234338582
ontime7	46915.234338582
l1events	119902

2.1.4 Events

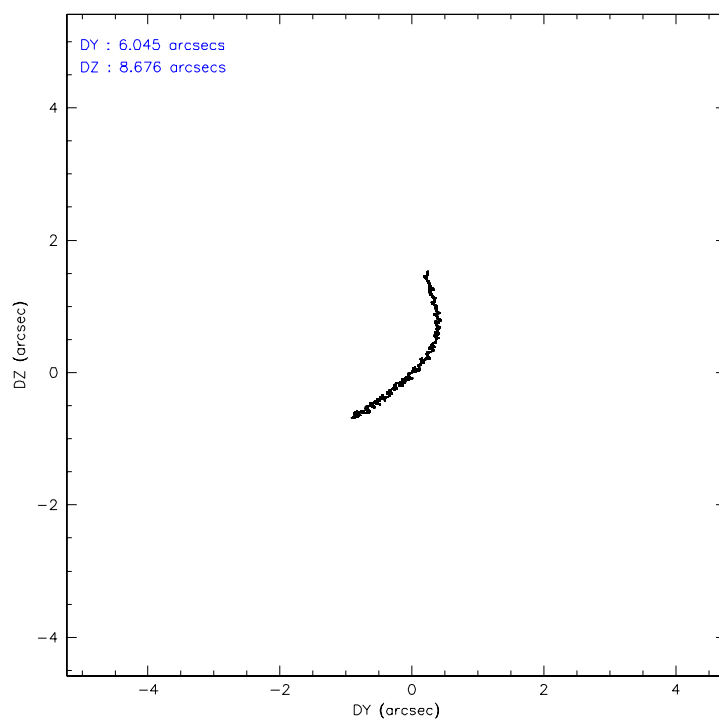
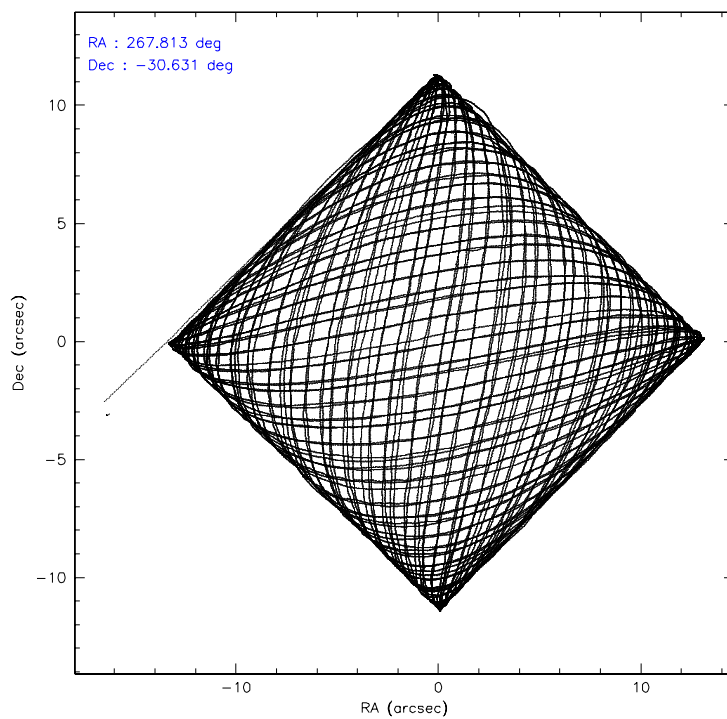
	ccd 7
level 1 events	119902
rejected events	70391
rejected %	58%

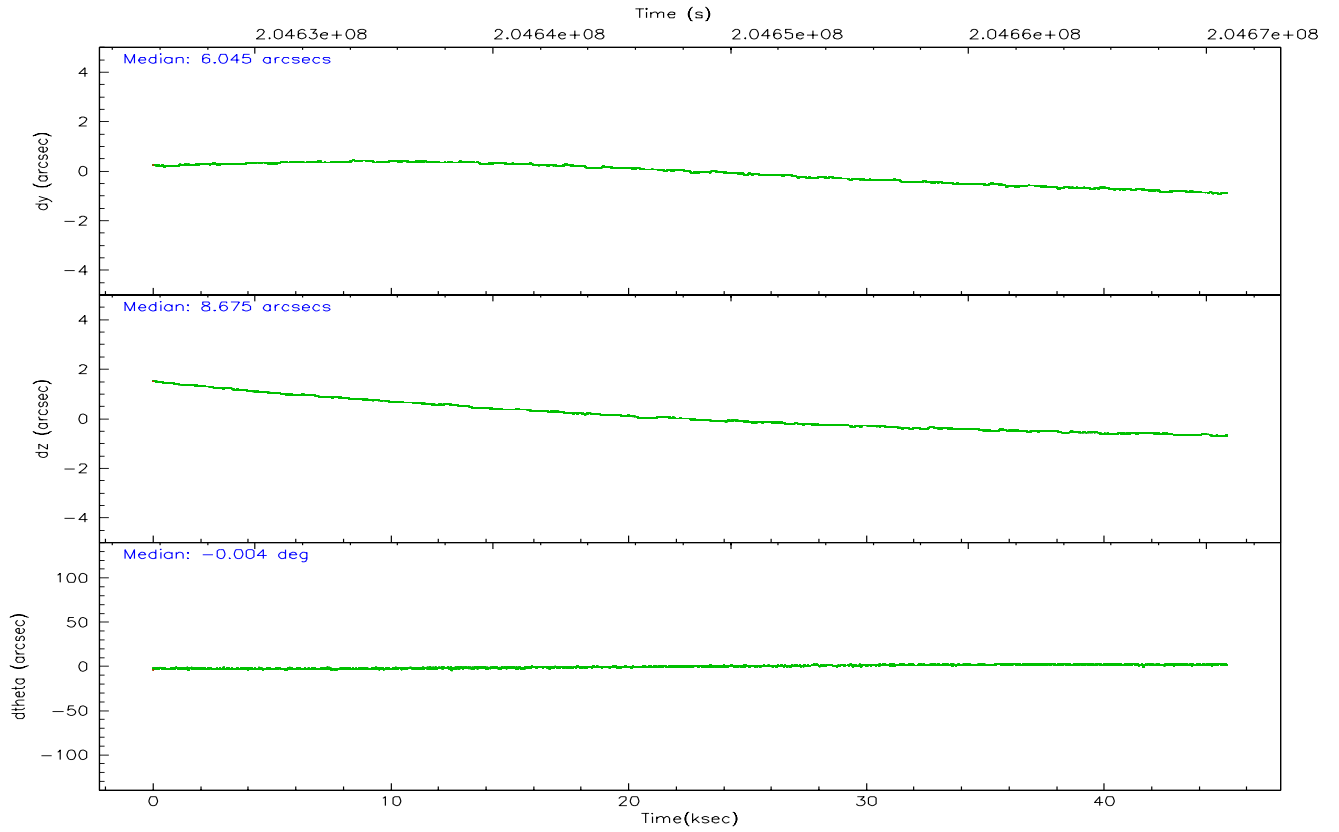
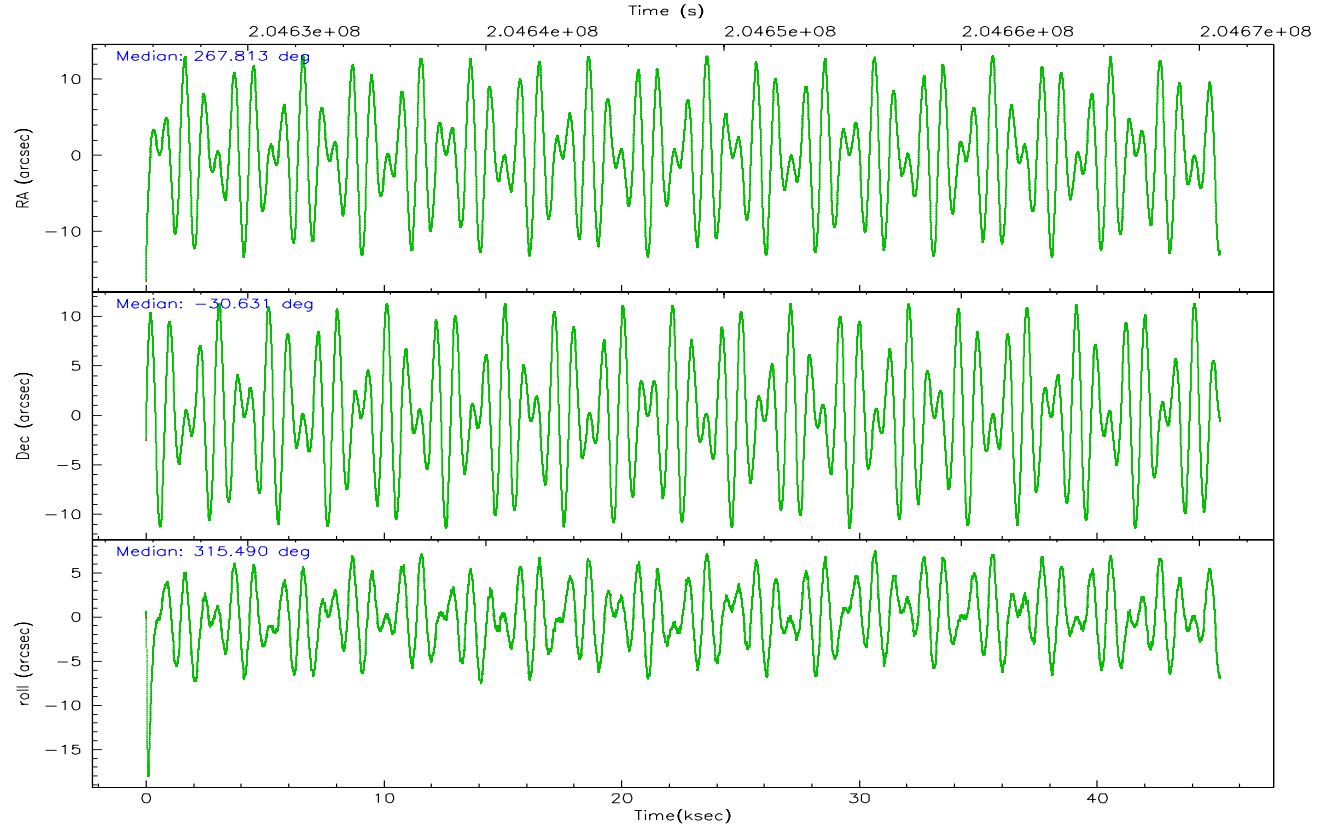
	ccd 7
grade 0 events	3792
	3%
grade 1 events	90
	0%
grade 2 events	12287
	10%
grade 3 events	4144
	3%
grade 4 events	4064
	3%
grade 5 events	8579
	7%
grade 6 events	27099
	22%
grade 7 events	59847
	49%

2.2 Compared Parameters

Parameter	Planned	Actual	Parameter	Planned	Actual
Instrument	ACIS	ACIS	Obspar format version number	6	6
Detector	ACIS-7	ACIS-7	Obspar file type	PREDICTED	ACTUAL
Grating	NONE	NONE	Obspar update status	NONE	UPDATED
Data mode	FAINT	FAINT	On-chip summing requested	N	N
Observation mode	POINTING	POINTING	Subarray requested	1/4	1/4
Pointing RA	267.782018	267.8127422276777	Subarray start row	0	385
Pointing Dec	-30.624584	-30.63102694015904	Subarray row count	1024	256
Pointing Roll	315.326282	315.4985733631021	Alternating exposures requested	N	N
SIM focus pos (mm)	-0.684267	-0.6828225247311905	Primary exposure time	0.000000	0.8
SIM defocus (mm)	0	0.001444936568705701			
SIM translation stage pos (mm)	-190.132523	-190.1400660498719			
SIM translation stage offset (mm)	0	0.00754346686406393			
Observation start time	204625888.184000	204623974.27108			
Observation start date	2004-06-26T08:30:24	2004-06-26T07:59:34			
Observation end time	204670888.184000	204671466.62318			
Observation end date	2004-06-26T21:00:24	2004-06-26T21:11:06			
Read mode	TIMED	TIMED			

2.3 Aspect



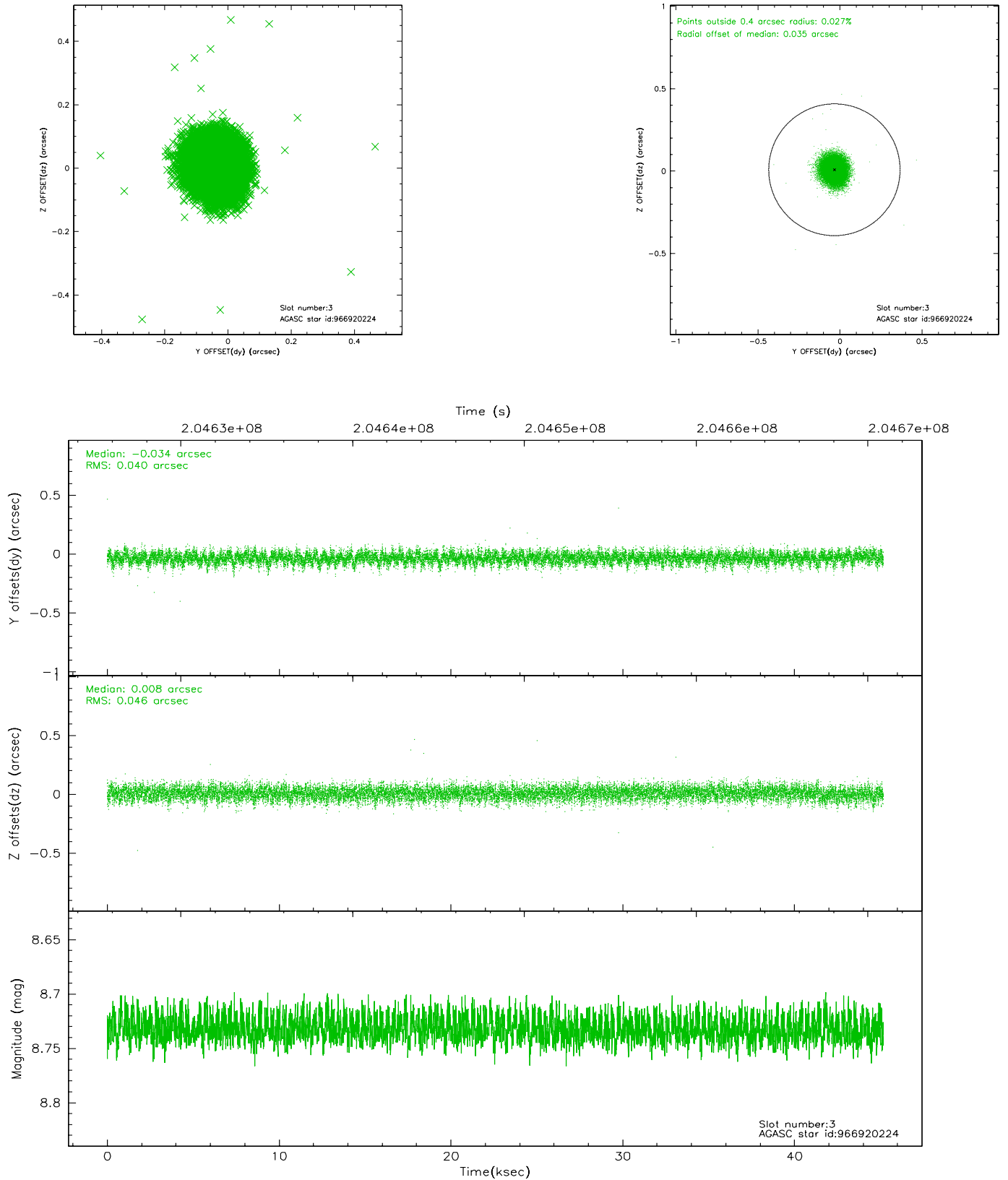


Slot Statistics

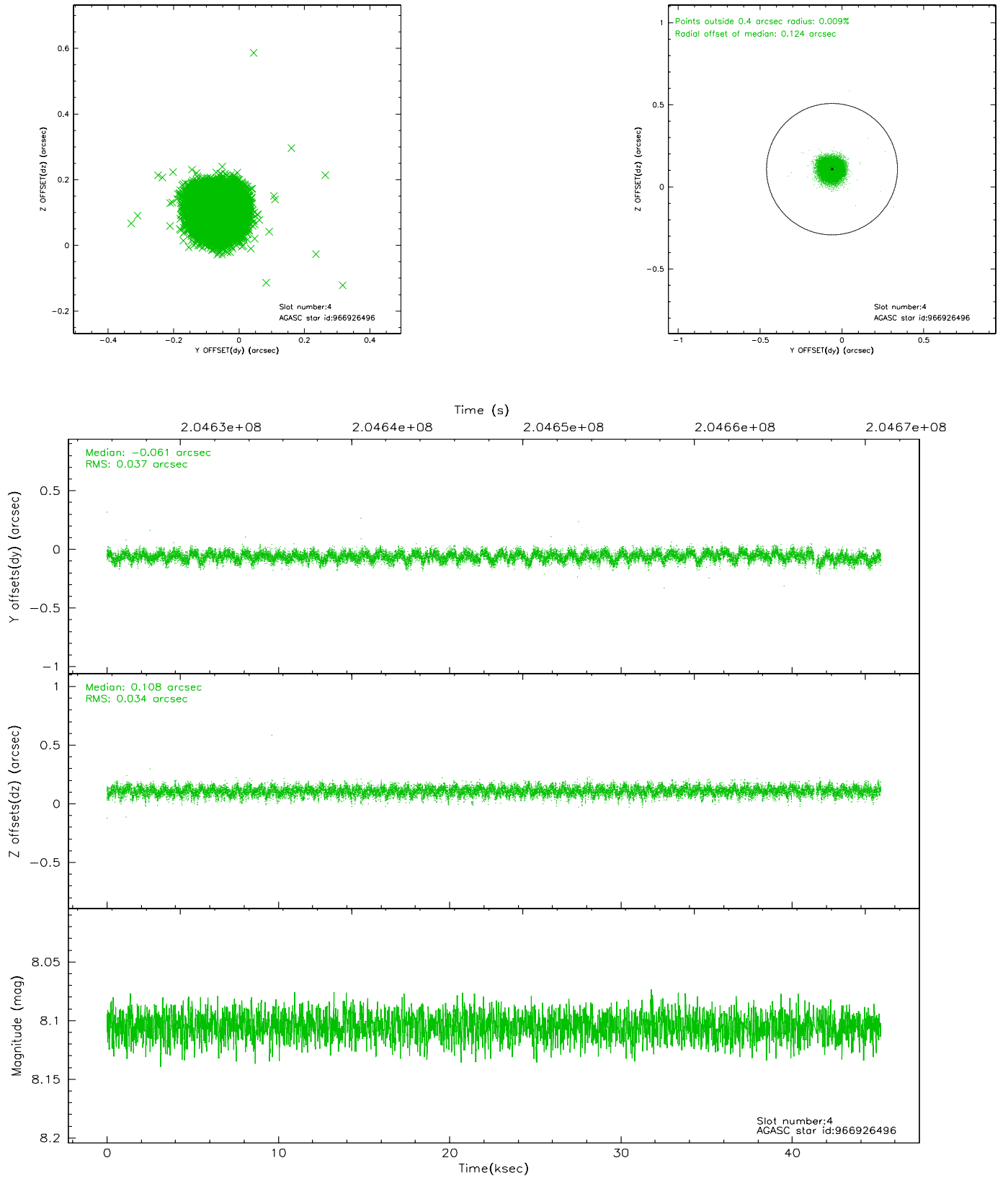
slot	status	id	mag	n_pts	med_dy	med_dz	dr1	dr2	ra	dec	mean_y	mean_z
0	FID	ACIS-S-1	7.18	11019	0.010	0.006	0.012	0.022	0.000000	0.000000	937.32	-1725.67
1	FID	ACIS-S-2	7.10	11021	-0.059	-0.026	0.008	0.015	0.000000	0.000000	-758.65	-1730.20
2	FID	ACIS-S-4	7.20	11021	0.023	0.025	0.008	0.023	0.000000	0.000000	2154.63	178.49
3	GUIDE	966920224	8.73	22030	-0.034	0.008	0.065	0.104	267.399434	-31.055624	253.95	-1934.35
4	GUIDE	966926496	8.10	21965	-0.061	0.108	0.053	0.086	267.109389	-30.299474	-2304.98	-642.34
5	GUIDE	966918336	8.13	22035	0.077	-0.047	0.053	0.085	267.709998	-30.955430	679.75	-1003.13
6	GUIDE	967060208	8.58	22036	0.069	0.091	0.081	0.131	267.770250	-30.970101	849.23	-909.71
7	GUIDE	967053960	9.26	22018	-0.051	-0.160	0.100	0.155	268.185736	-30.091336	-453.91	2247.60

2.4 Star Slots

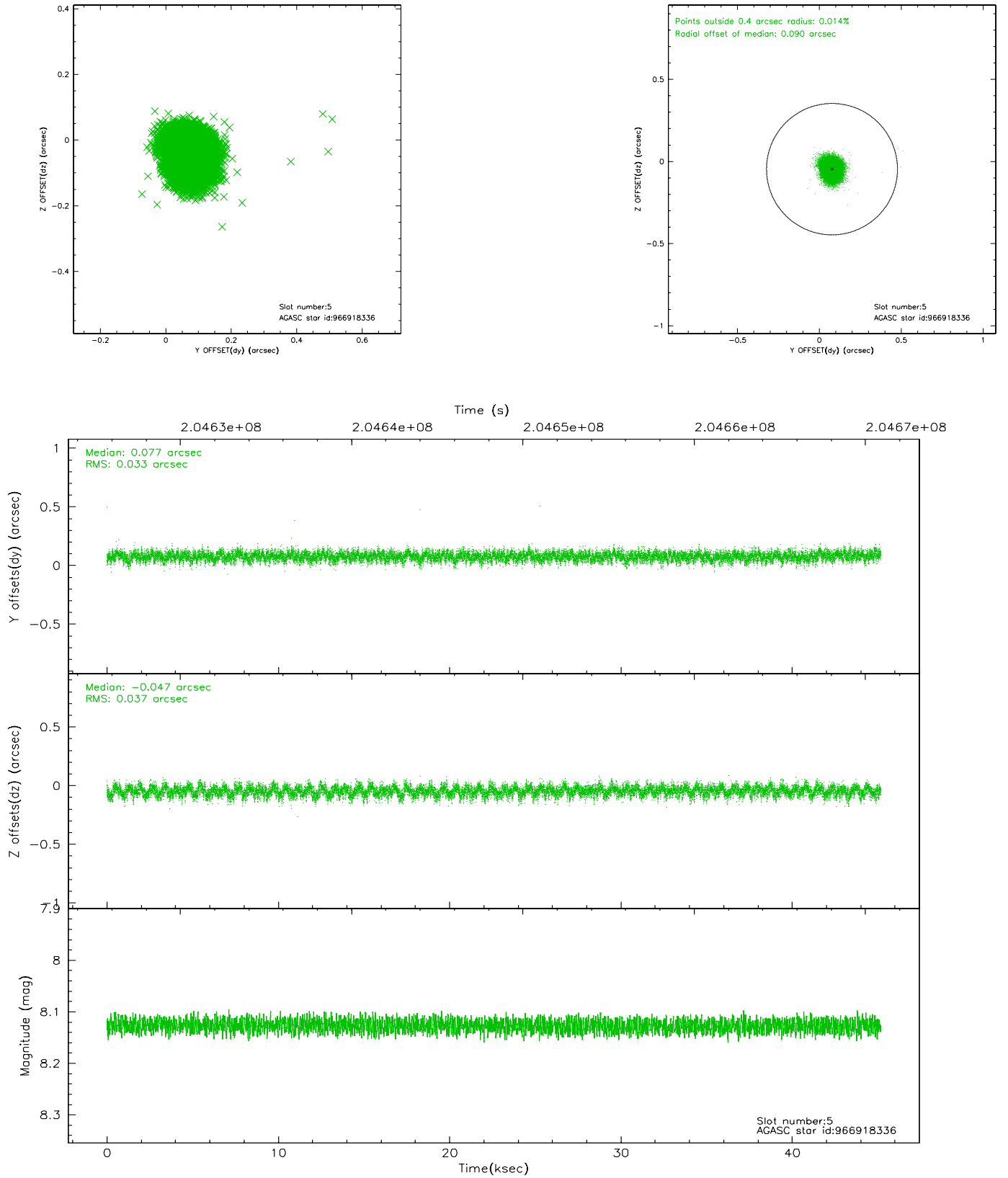
2.4.1 Slot 3



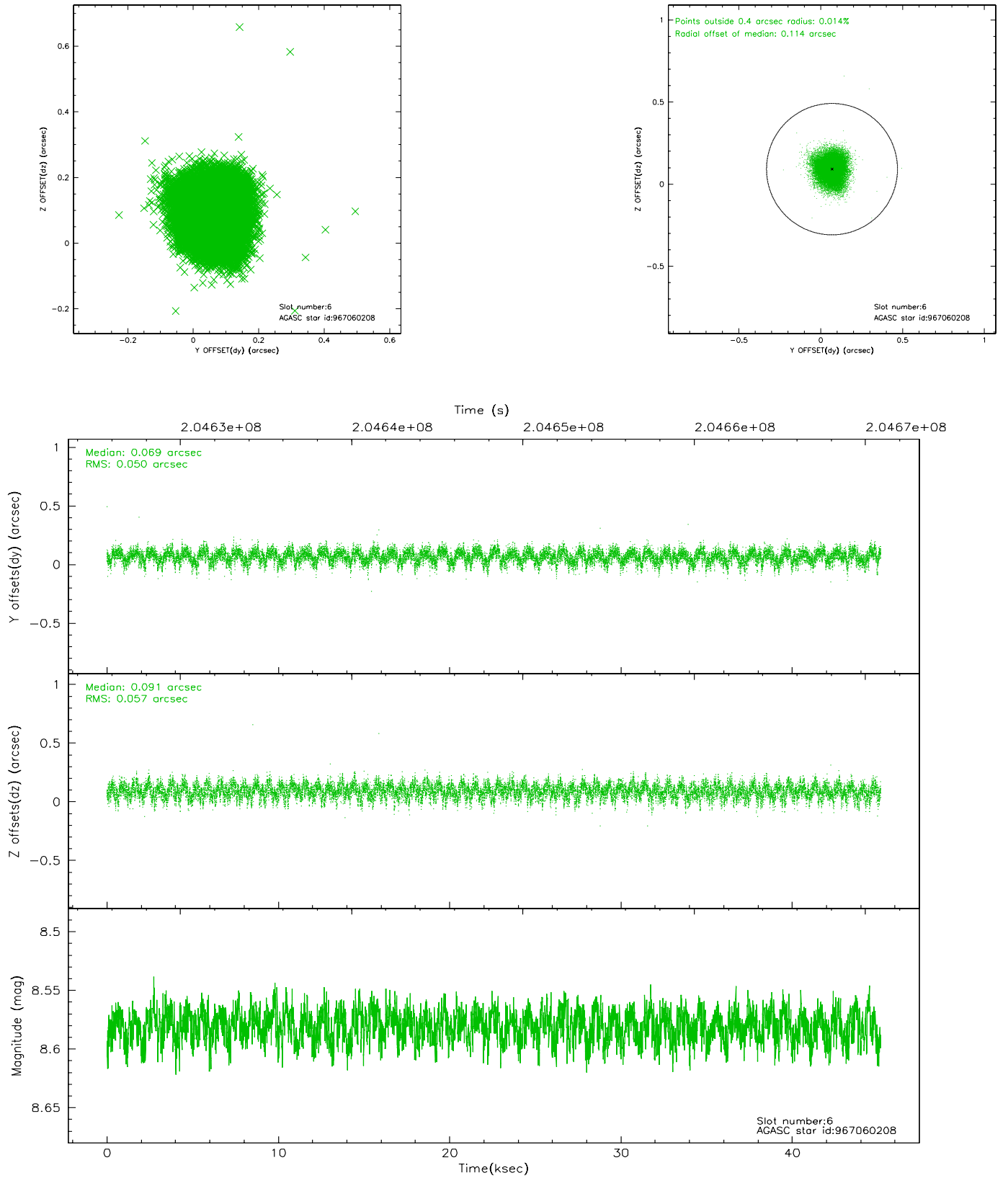
2.4.2 Slot 4



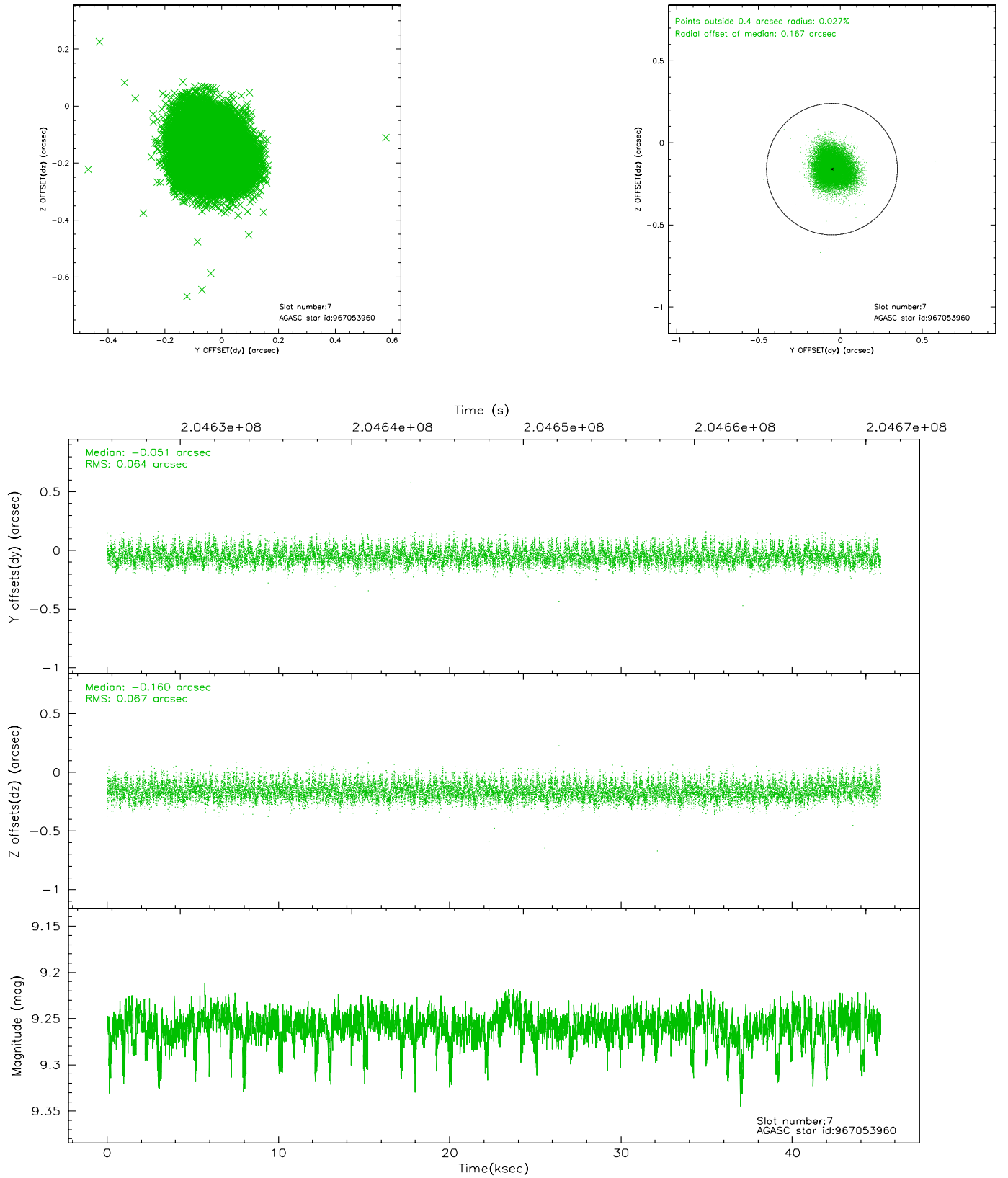
2.4.3 Slot 5



2.4.4 Slot 6

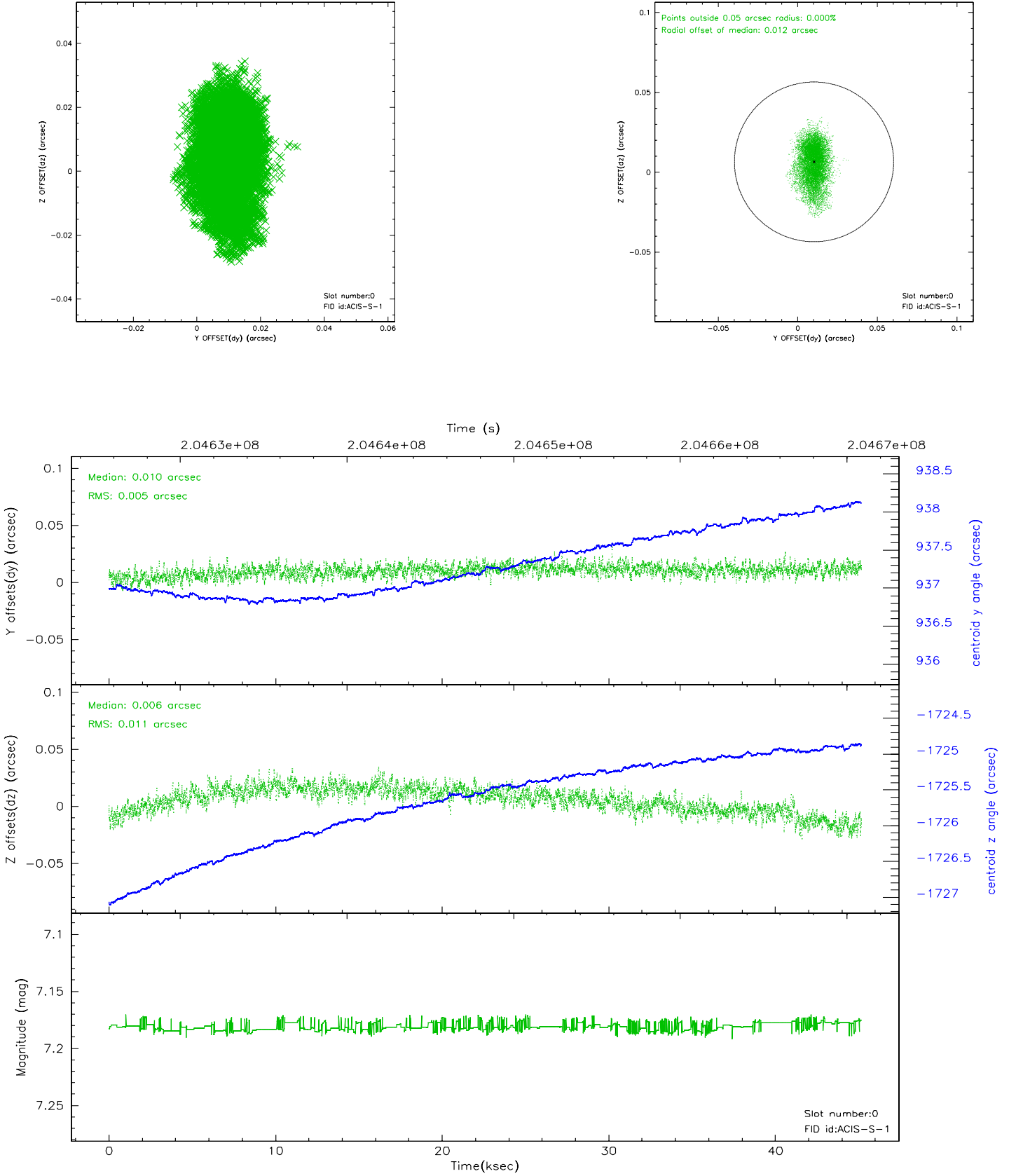


2.4.5 Slot 7

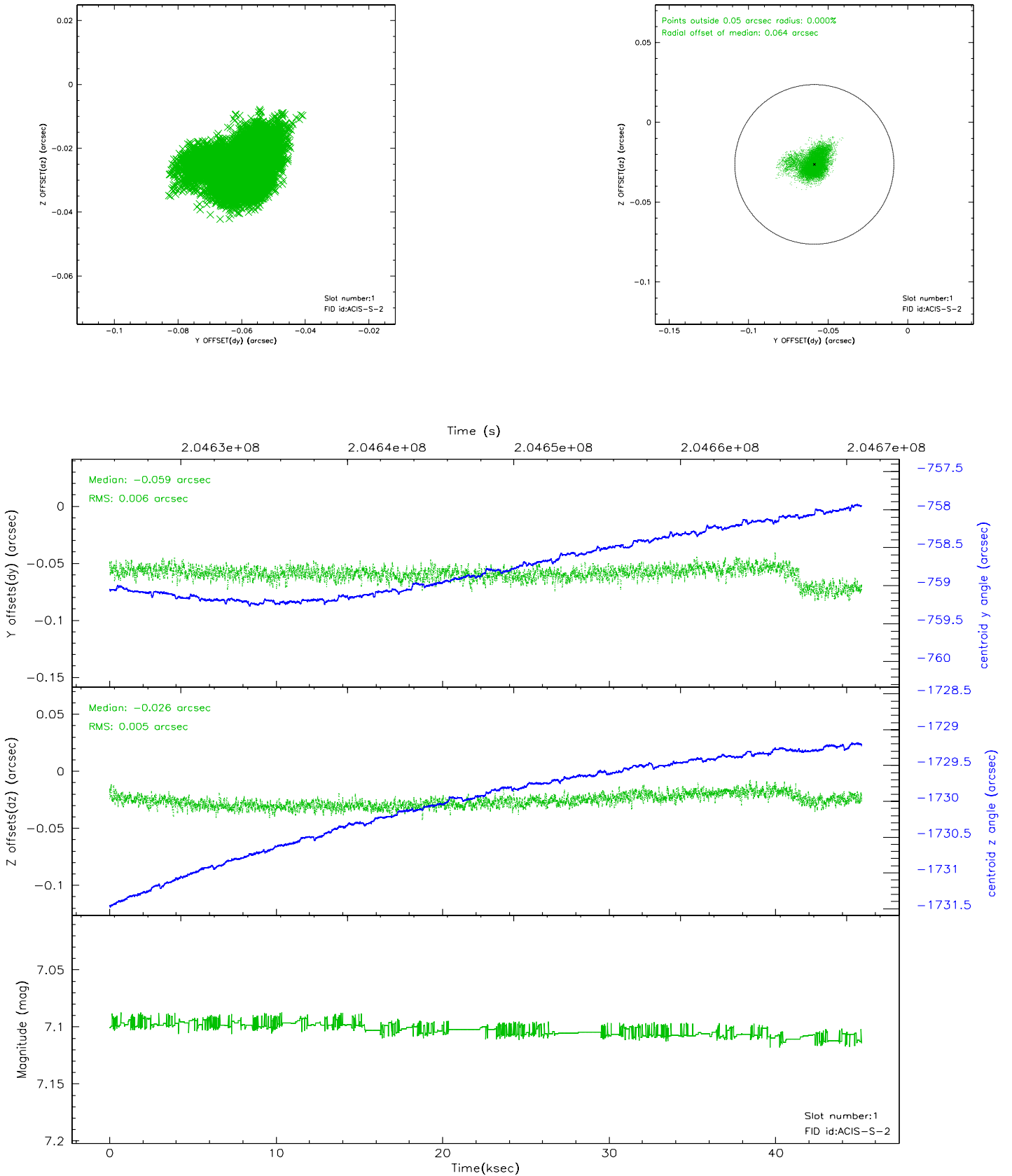


2.5 FID Slots

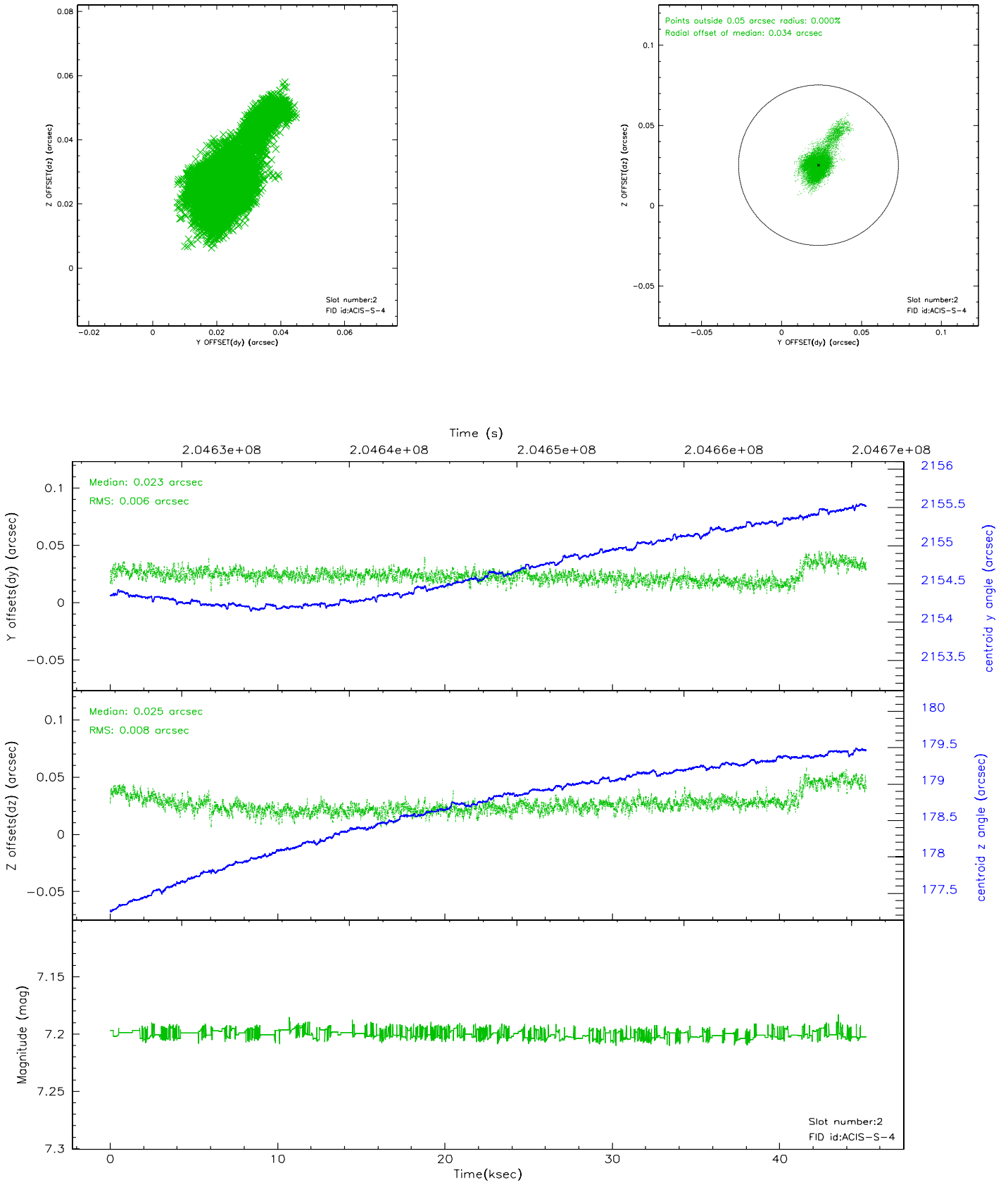
2.5.1 Slot 0



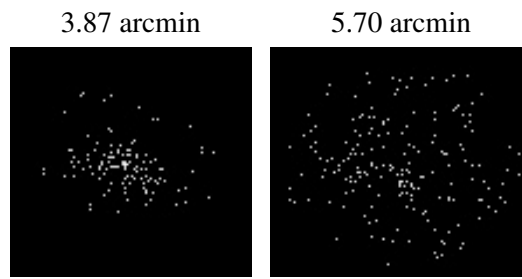
2.5.2 Slot 1



2.5.3 Slot 2



3 Point Sources



A Summary

A.1 Status

V&V Scientist	Beth Sundheim
V&V Date (YYYY-MM-DD)	2006.05.24
V&V Edition	1
V&V Disposition and Status	OK
V&V Charge Time	45.183

A.2 Comments