

V&V Reference Report

L2 ASCDS Version : 8.4.5

Observation 4555 - L2 Version 3
Chandra X-Ray Center

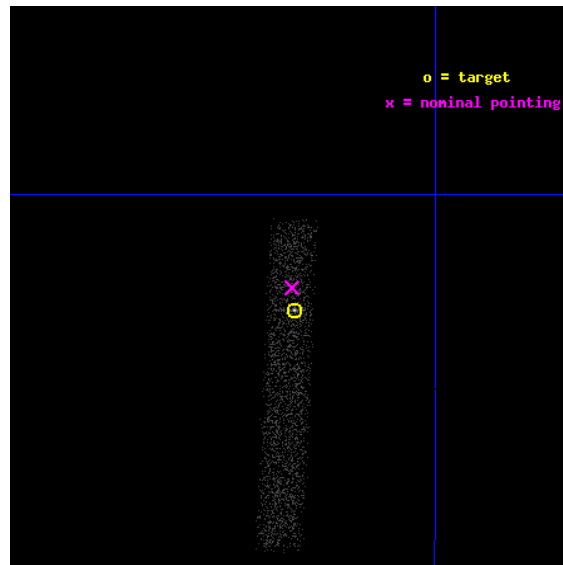
L2 Processing Date : Nov 9 2012

Contents

1	Front	2
2	OBI	3
2.1	OBI	3
2.1.1	Images	3
2.1.2	Bias	3
2.1.3	Parameters	4
2.1.4	Events	4
2.2	Compared Parameters	5
2.3	Aspect	6
2.4	Star Slots	9
2.4.1	Slot 3	9
2.4.2	Slot 4	10
2.4.3	Slot 5	11
2.4.4	Slot 6	12
2.4.5	Slot 7	13
2.5	FID Slots	14
2.5.1	Slot 0	14
2.5.2	Slot 1	15
2.5.3	Slot 2	16
A	Summary	17
A.1	Status	17
A.2	Comments	17

1 Front

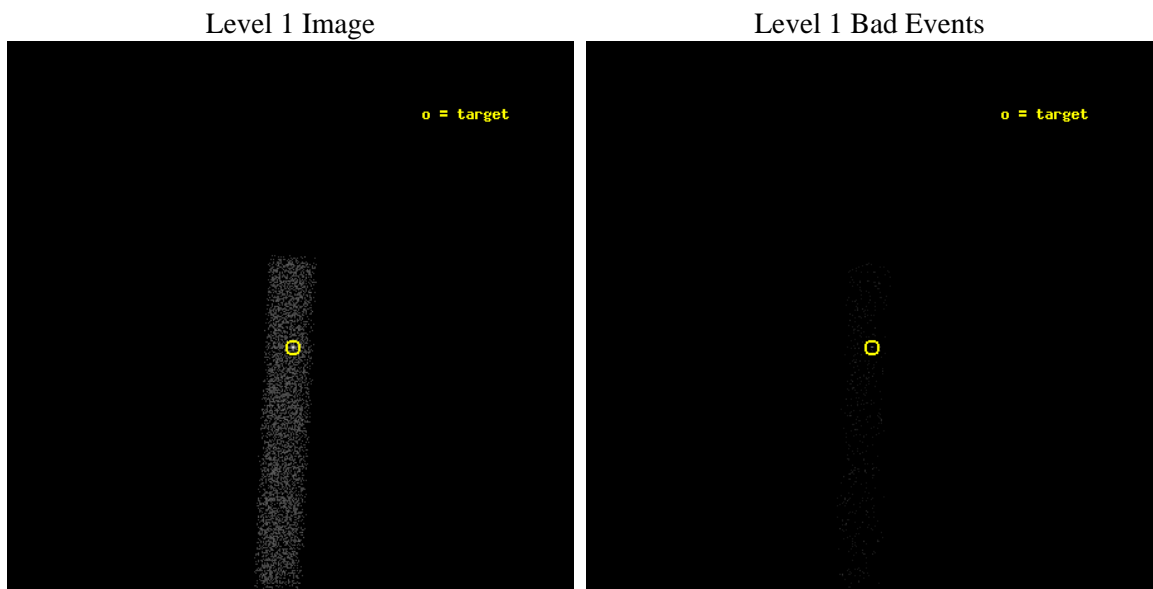
seq_num	400338	Sequence number
obs_id	4555	Observation id
title	Monitoring the ultraluminous x-ray source in NGC 5408	Proposal tit
observer	Prof. Philip Kaaret	Principal investigator
object	NGC 5408 ULX	Source name
dtcycle	0	
cycle	P	events from which exps? Prim/Second/Both
ra_targ	210.831667	Observer's specified target RA [deg]
dec_targ	-41.382972	Observer's specified target Dec [deg]
ra_nom	210.83330978238	Nominal RA [deg]
dec_nom	-41.373350768046	Nominal Dec [deg]
roll_nom	92.405676026727	Nominal Roll [deg]
revision	3	Processing version of data
ontime	5146.4000766575	Sum of GTIs [s]
livetime	4667.513220259	Livetime [s]
ontime7	5146.4000766575	Sum of GTIs [s]
l2events	4223	Number of level 2 events



2 OBI

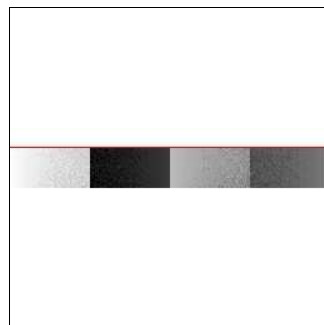
2.1 OBI

2.1.1 Images



2.1.2 Bias

Chip 7



2.1.3 Parameters

obi_num	0	Obi number	sched_exp_time	5000.000000	[s] Scheduled observation exposure time
ascdsver	8.4.5	Processing system revision	ontime	5146.4000766575	Sum of GTIs [s]
caldsver	4.5.2	 	ontime7	5146.4000766575	Sum of GTIs [s]
date	2012-11-09T07:37:58	Date and time of file creation	l1events	8532	Number of level 1 events
revision	3	Processing version of data			

2.1.4 Events

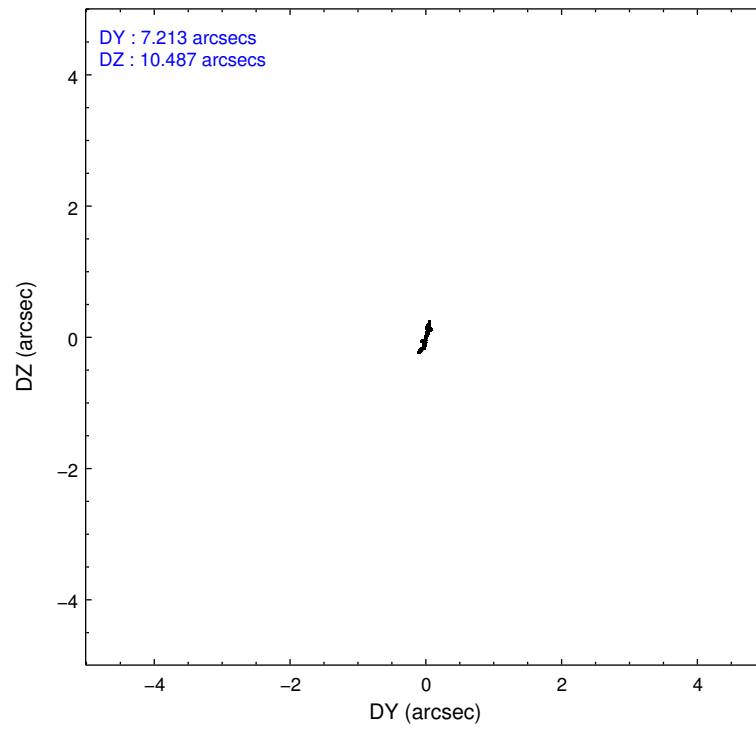
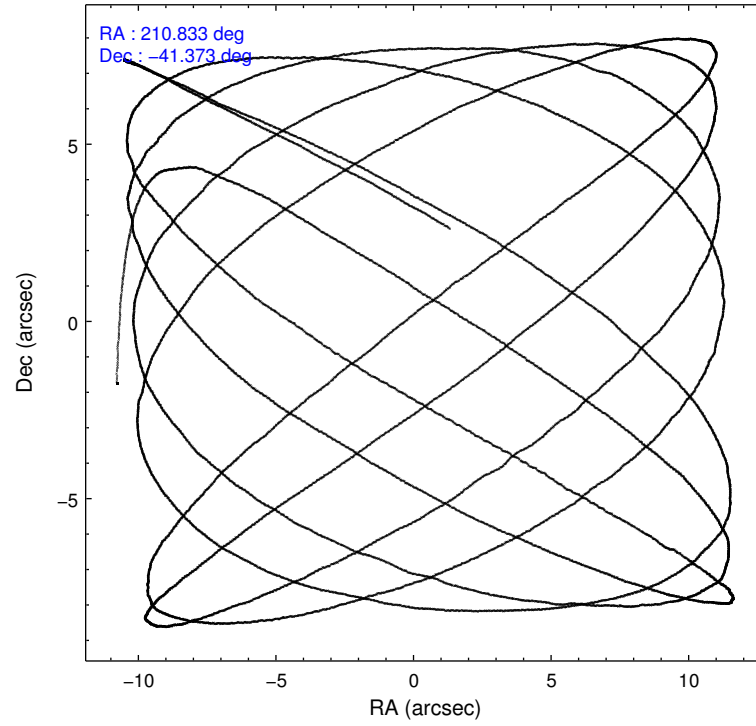
	ccd 7
level 1 events	8532
rejected events	4198
rejected %	49%

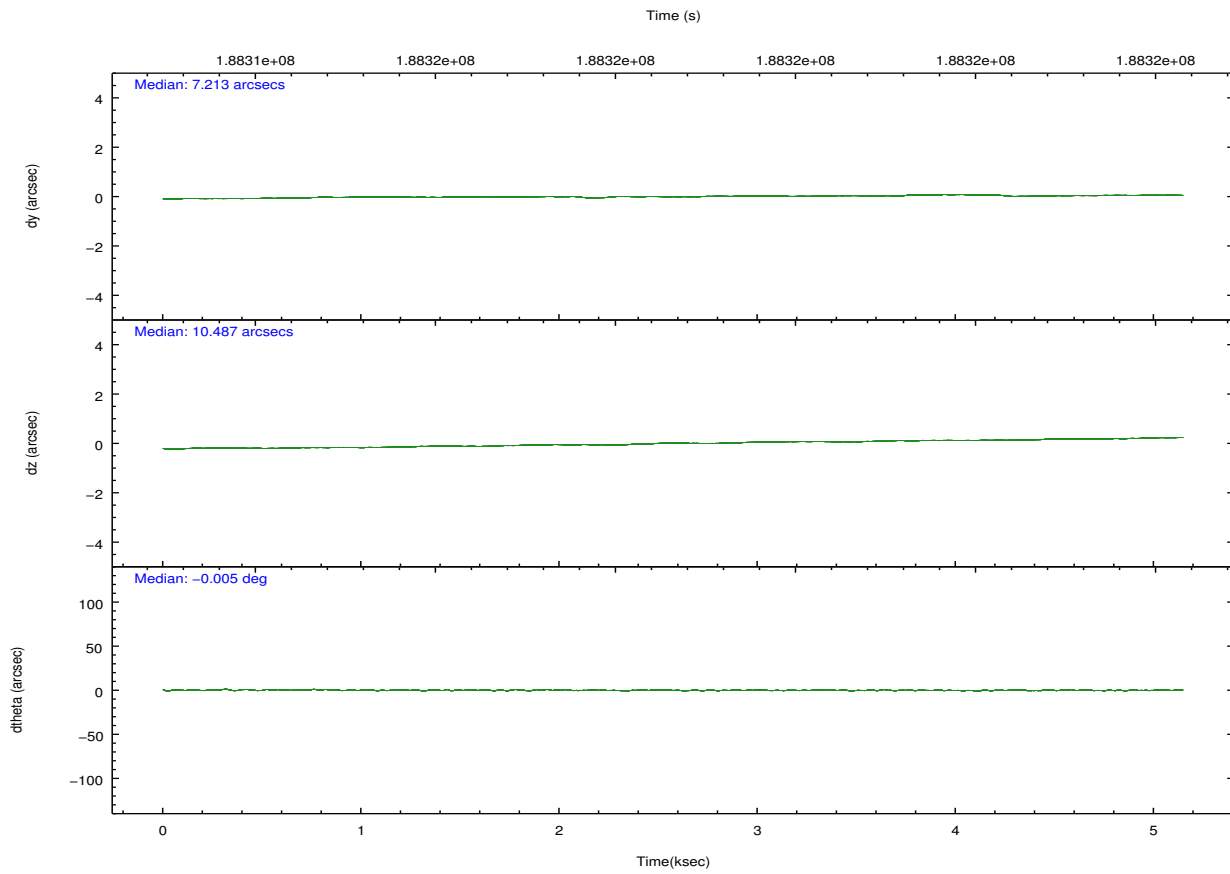
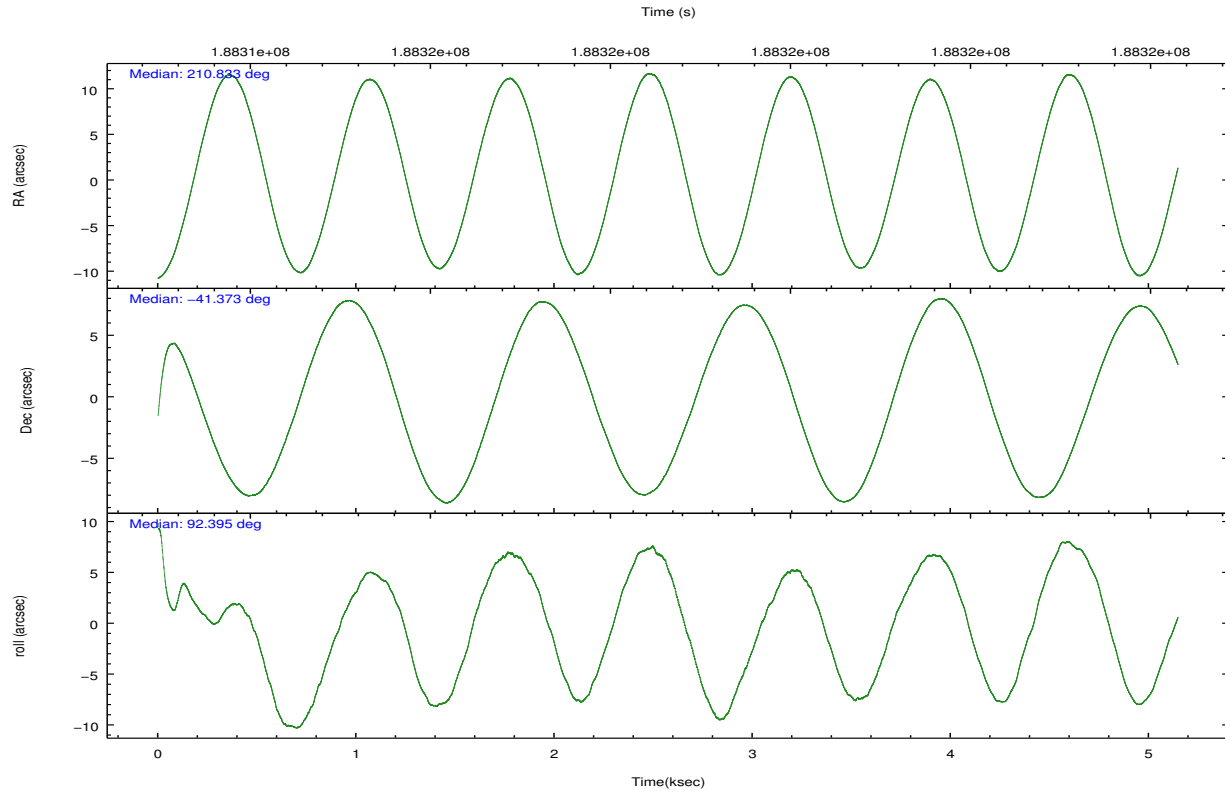
	ccd 7
grade 0 events	987
	11%
grade 1 events	14
	0%
grade 2 events	1007
	11%
grade 3 events	609
	7%
grade 4 events	567
	6%
grade 5 events	624
	7%
grade 6 events	1659
	19%
grade 7 events	3065
	35%

2.2 Compared Parameters

Parameter	Planned	Actual	Parameter	Planned	Actual
Instrument	ACIS	ACIS	Obspar format version number	7	7
Detector	ACIS-7	ACIS-7	Obspar file type	PREDICTED	ACTUAL
Grating	NONE	NONE	Obspar update status	NONE	UPDATED
Data mode	FAINT	FAINT	Number of optional ACIS chips dropped	0	0
Observation mode	POINTING	POINTING	On-chip summing requested	N	N
[deg] Pointing RA	210.853263	210.8333097823809	Subarray requested	CUSTOM	1/8
[deg] Pointing Dec	-41.396168	-41.37335076804635	Subarray start row	449	449
[deg] Pointing Roll	92.262223	92.40567602672741	Subarray row count	128	128
[mm] SIM focus pos	-0.684267	-0.6828225247311905	Alternating exposures requested	N	N
[mm] SIM defocus	0	0.001444936568705701	[s] Primary exposure time	0.000000	0.4
[mm] SIM translation stage pos	-190.132523	-190.1400660498719			
[mm] SIM translation stage offset	0	0.00754346686406393			
[s] Observation start time (MET)	188313893.184000	188312793.39243			
Observation start date	2003-12-20T13:23:49	2003-12-20T13:06:33			
[s] Observation end time (MET)	188318893.184000	188319778.25523			
Observation end date	2003-12-20T14:47:09	2003-12-20T15:02:58			
Read mode	TIMED	TIMED			

2.3 Aspect



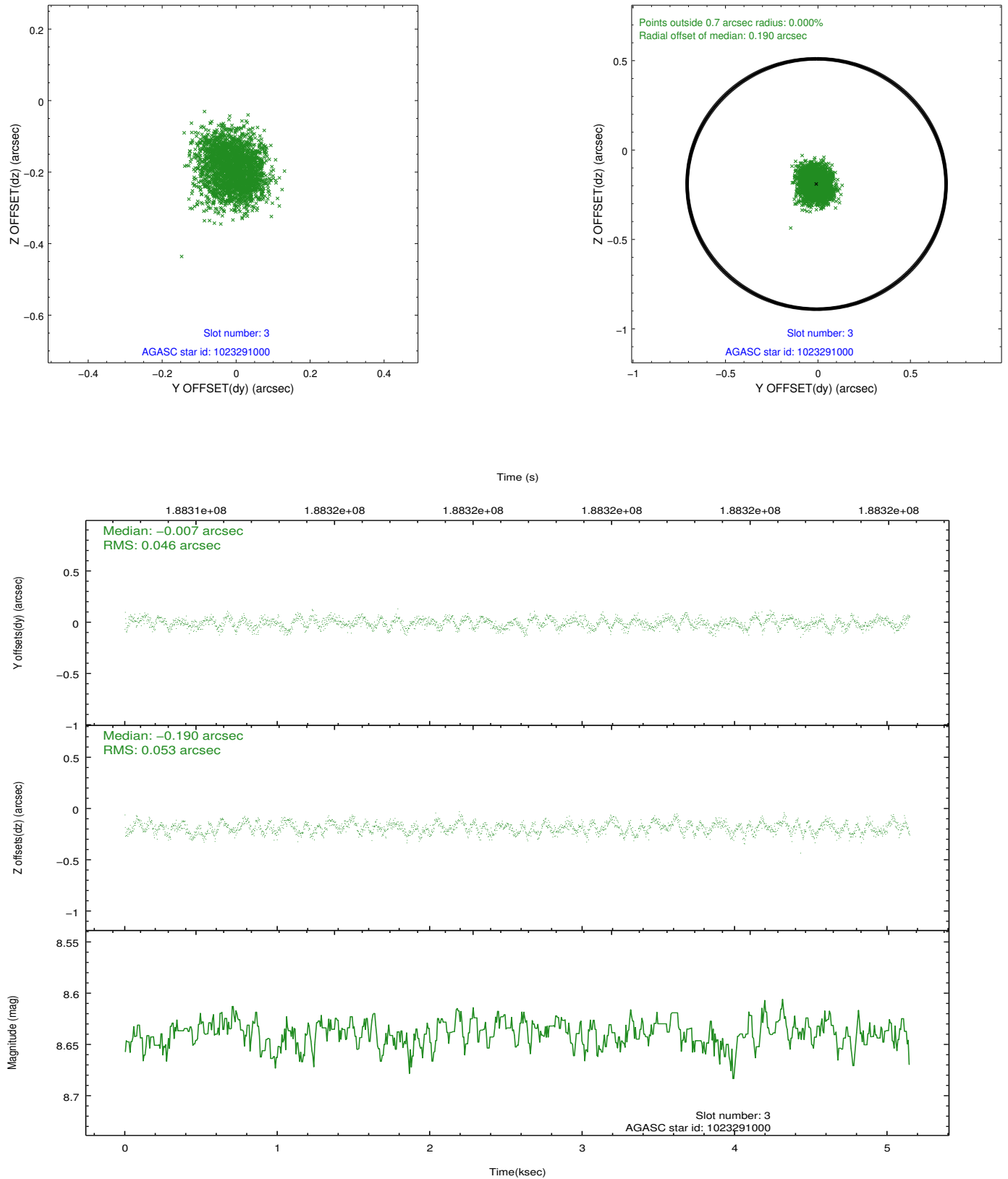


Slot Statistics

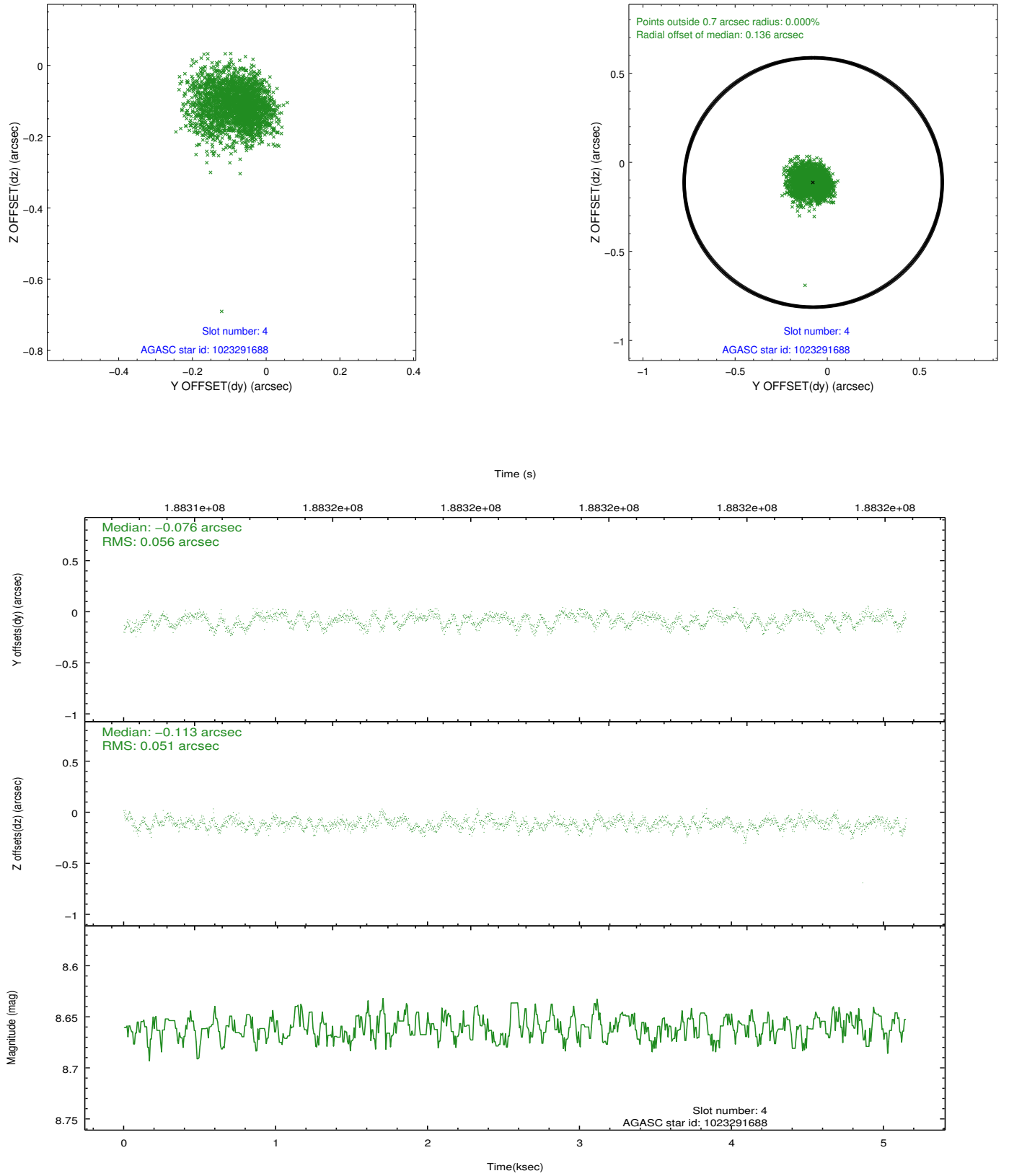
slot	status	id	mag	n_pts	med_dy	med_dz	dr1	dr2	ra	dec	mean_y	mean_z
0	FID	ACIS-S-2	7.10	1256	-0.041	-0.002	0.007	0.012	0.000000	0.000000	-759.98	-1731.76
1	FID	ACIS-S-4	7.20	1256	0.058	0.021	0.006	0.010	0.000000	0.000000	2152.83	175.59
2	FID	ACIS-S-5	7.22	1256	-0.048	-0.010	0.007	0.011	0.000000	0.000000	-1811.35	170.49
3	GUIDE	1023291000	8.64	2512	-0.007	-0.190	0.075	0.117	210.097476	-41.108006	1108.33	2007.78
4	GUIDE	1023291688	8.66	2512	-0.076	-0.113	0.080	0.129	210.168569	-41.185177	825.11	1824.54
5	GUIDE	1023822680	8.87	2510	0.053	0.143	0.067	0.107	211.176618	-41.286245	359.88	-888.68
6	GUIDE	1023824840	9.43	2509	0.135	0.124	0.084	0.134	210.682919	-41.618703	-782.53	489.19
7	GUIDE	1023292600	9.39	2509	-0.099	0.034	0.103	0.162	210.176441	-41.207792	742.30	1805.33

2.4 Star Slots

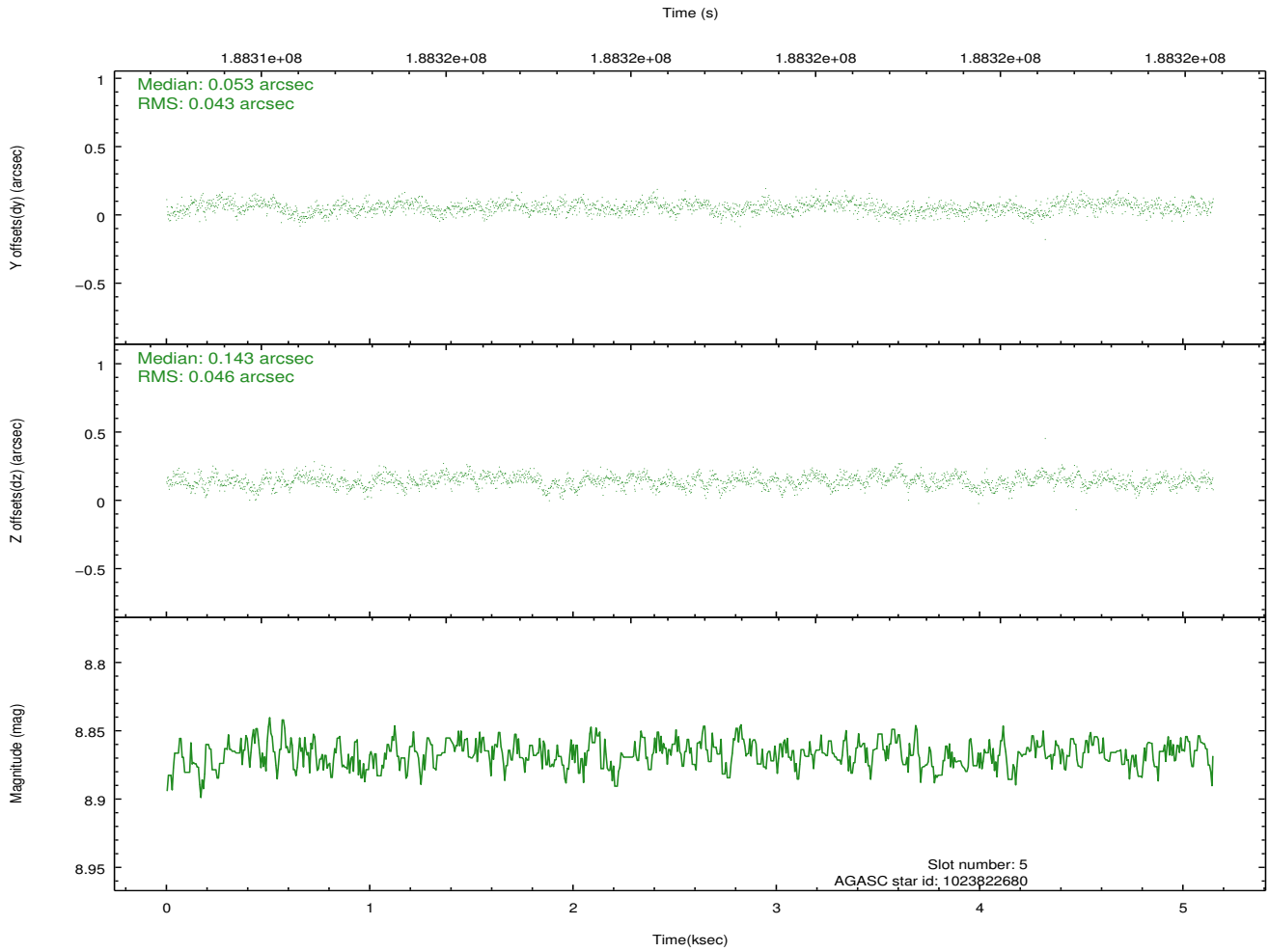
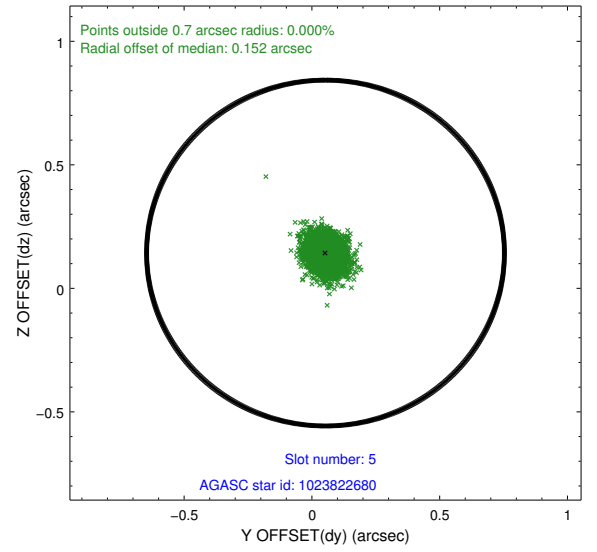
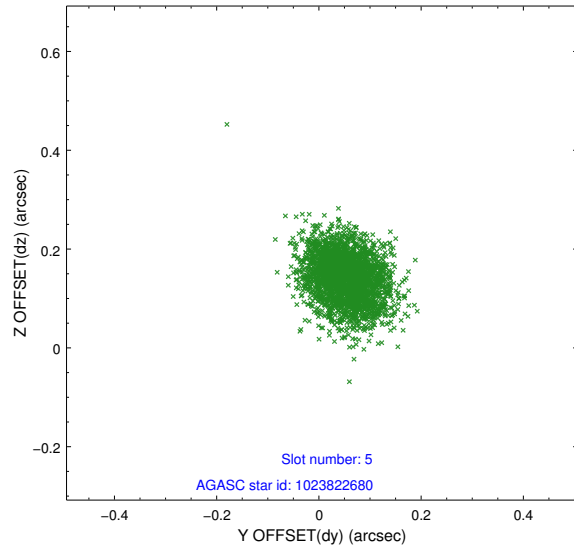
2.4.1 Slot 3



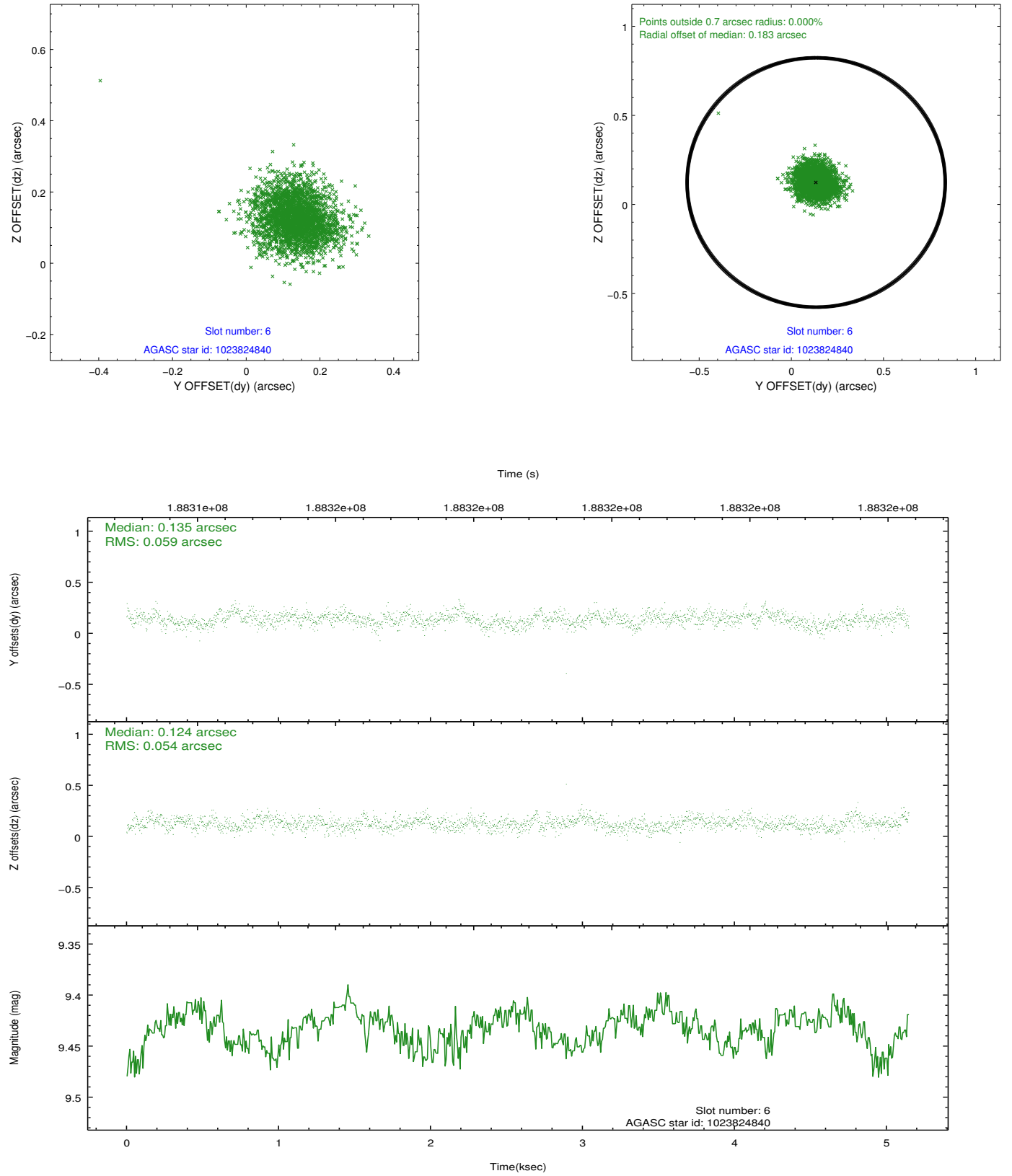
2.4.2 Slot 4



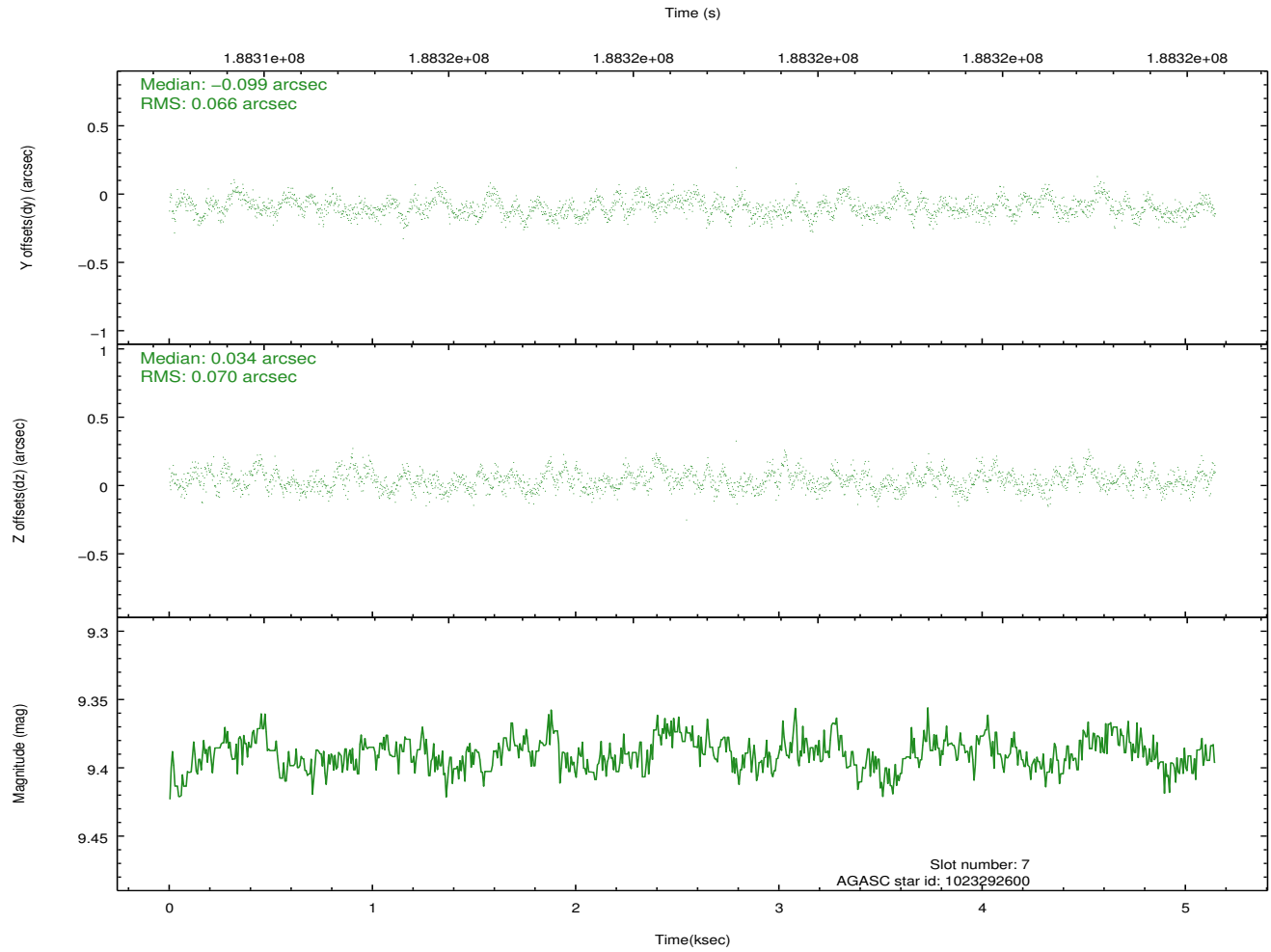
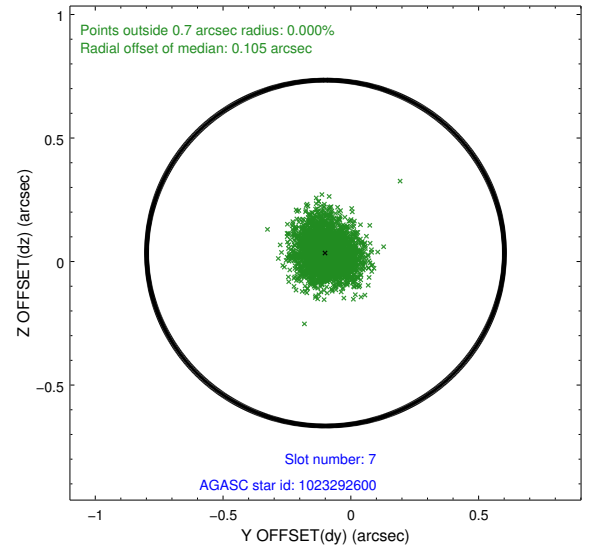
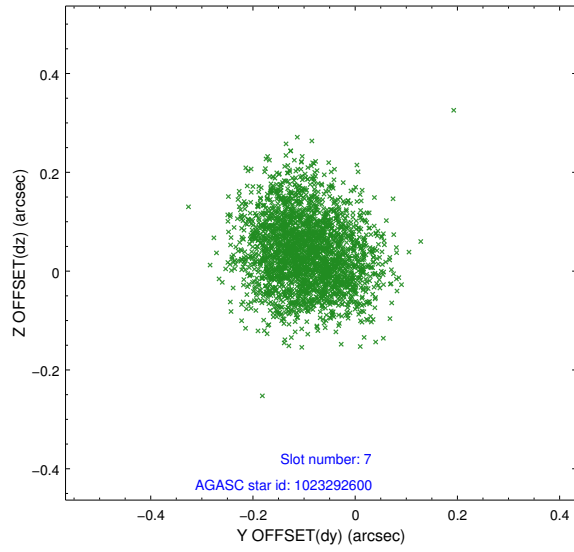
2.4.3 Slot 5



2.4.4 Slot 6

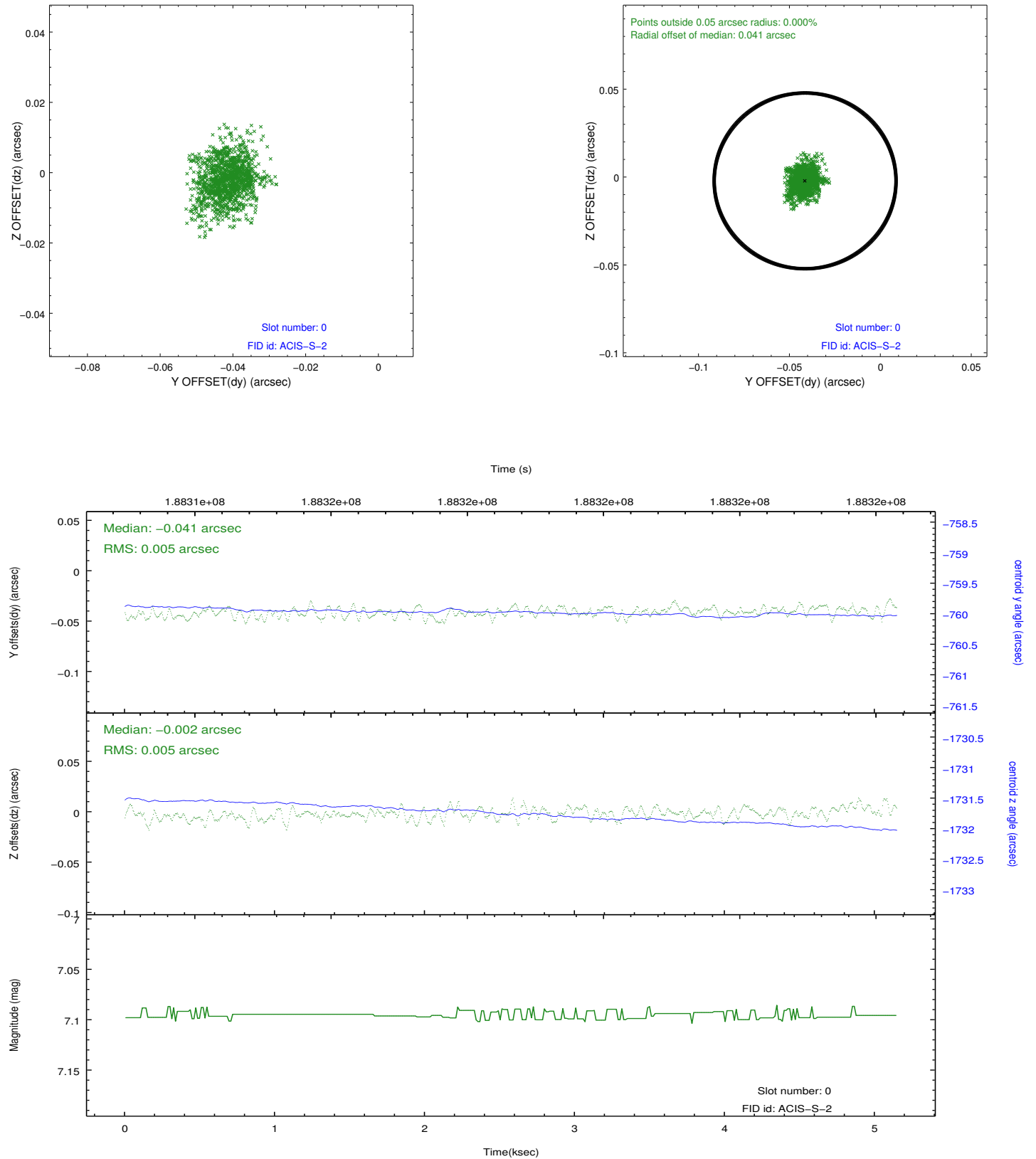


2.4.5 Slot 7

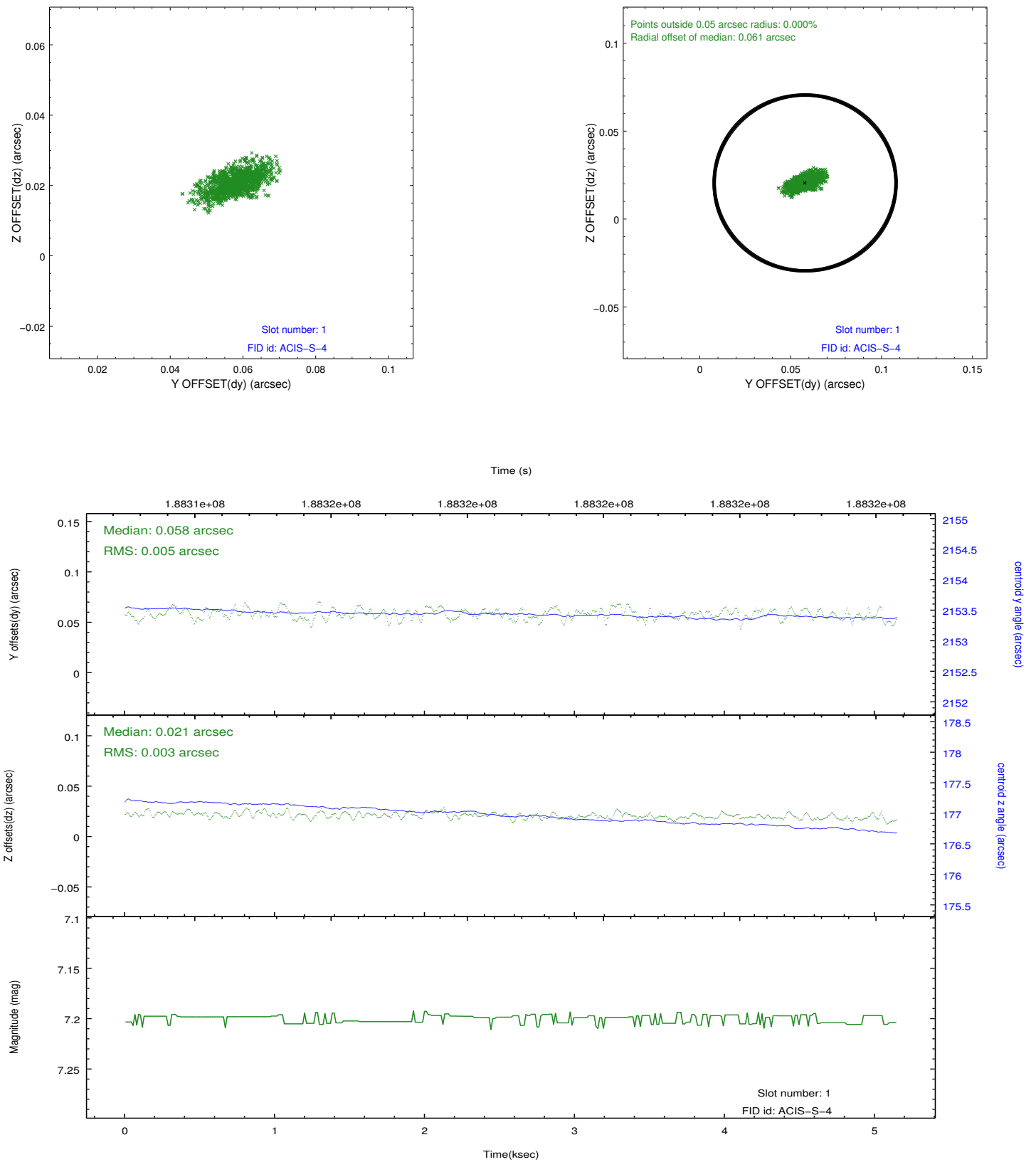


2.5 FID Slots

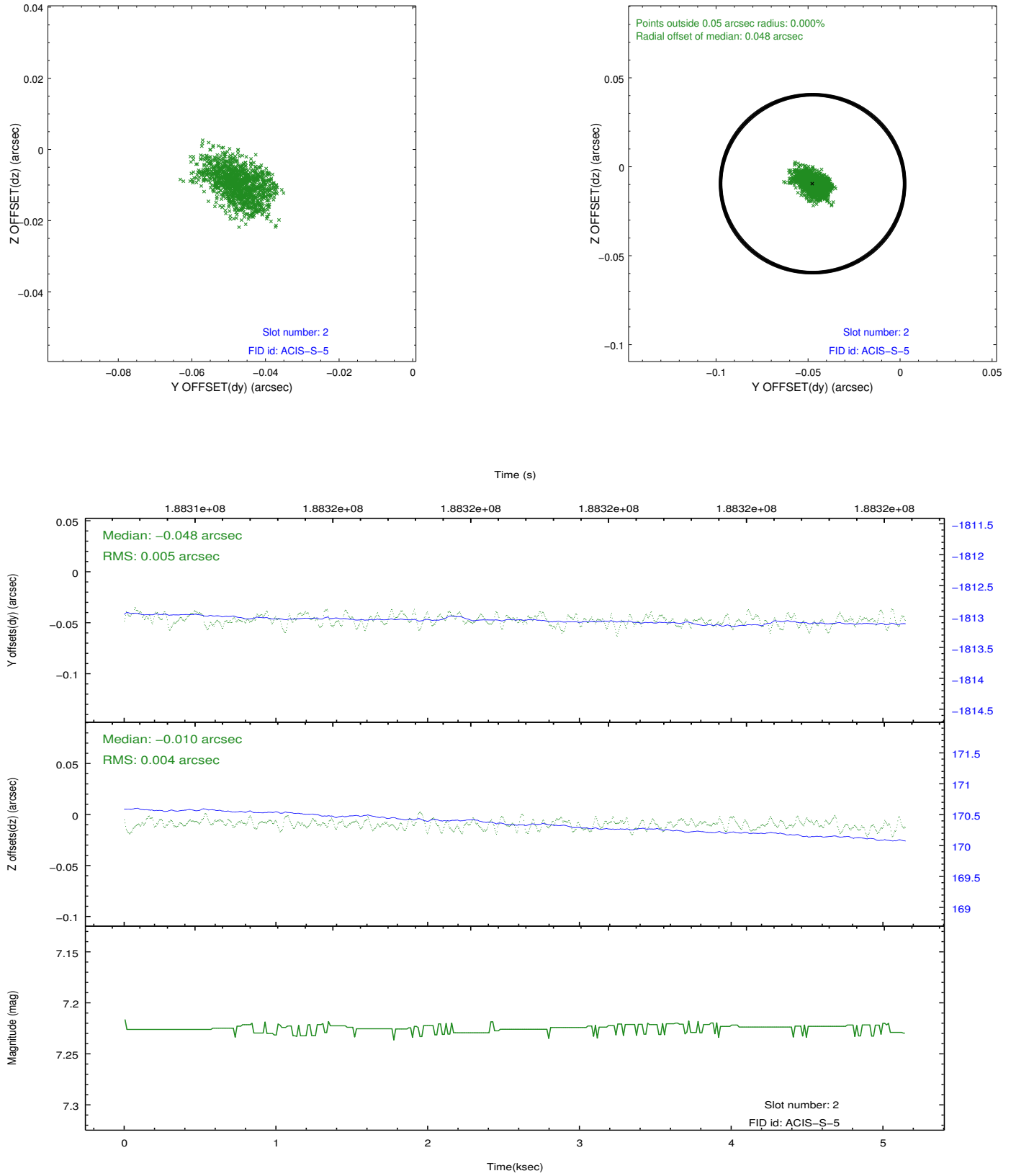
2.5.1 Slot 0



2.5.2 Slot 1



2.5.3 Slot 2



A Summary

A.1 Status

V&V Scientist	Jen Lauer
V&V Date (YYYY-MM-DD)	2012.12.03
V&V Edition	1
V&V Disposition and Status	OK
V&V Charge Time	5.146

A.2 Comments

Joint Proposal: NRAO