

# V&V Reference Report

## L2 ASCDS Version : 7.6.8

Observation 4555 - L2 Version 001  
Chandra X-Ray Center

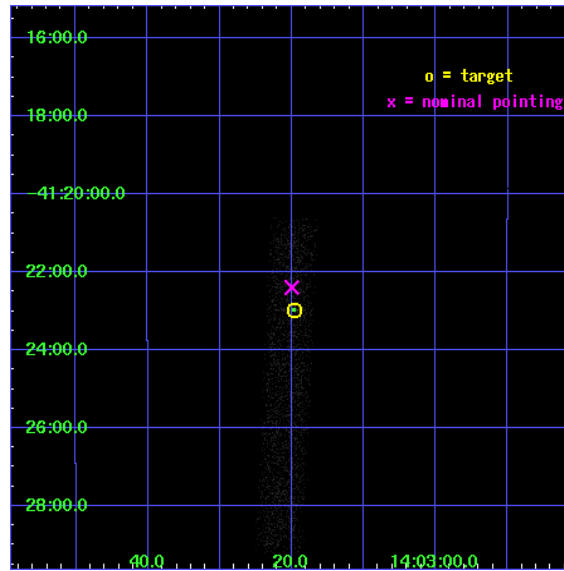
L2 Processing Date : Jun 22 2006

## Contents

<b>1</b>	<b>Front</b>	<b>2</b>
<b>2</b>	<b>OBI</b>	<b>3</b>
2.1	OBI . . . . .	3
2.1.1	Images . . . . .	3
2.1.2	Bias . . . . .	3
2.1.3	Parameters . . . . .	4
2.1.4	Events . . . . .	4
2.2	Compared Parameters . . . . .	5
2.3	Aspect . . . . .	6
2.4	Star Slots . . . . .	9
2.4.1	Slot 3 . . . . .	9
2.4.2	Slot 4 . . . . .	10
2.4.3	Slot 5 . . . . .	11
2.4.4	Slot 6 . . . . .	12
2.4.5	Slot 7 . . . . .	13
2.5	FID Slots . . . . .	14
2.5.1	Slot 0 . . . . .	14
2.5.2	Slot 1 . . . . .	15
2.5.3	Slot 2 . . . . .	16
<b>3</b>	<b>Point Sources</b>	<b>17</b>
<b>A</b>	<b>Summary</b>	<b>18</b>
A.1	Status . . . . .	18
A.2	Comments . . . . .	18

# 1 Front

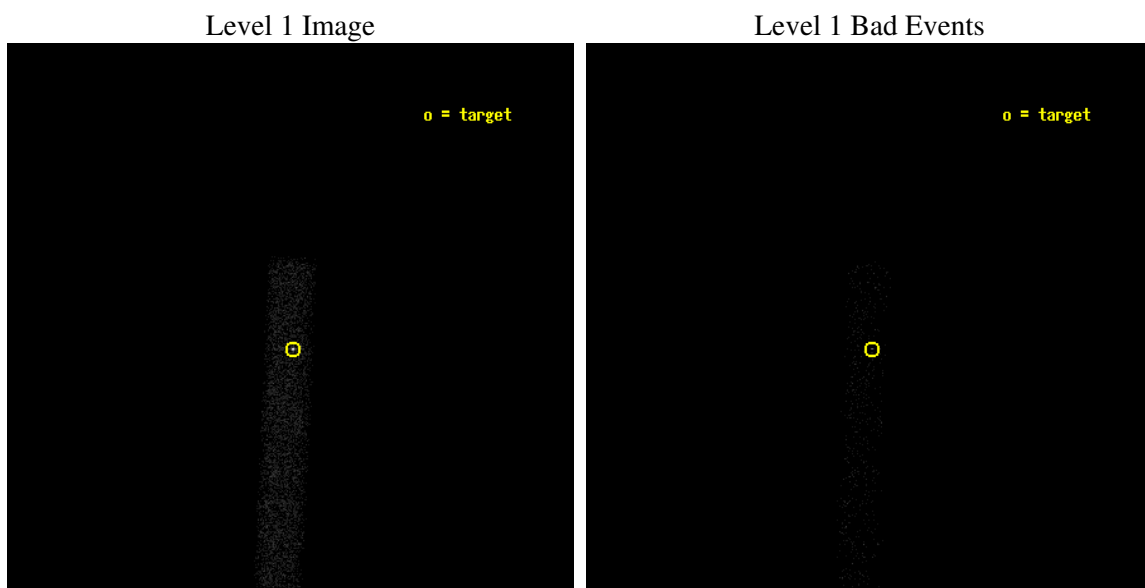
seq_num	400338
obs_id	4555
title	Monitoring the ultraluminous x-ray source in NGC 5408
observer	Prof. Philip Kaaret
object	NGC 5408 ULX
dtcycle	0
cycle	P
ra_targ	210.831667
dec_targ	-41.382972
ra_nom	210.83331123503
dec_nom	-41.373378524427
roll_nom	92.405676980086
revision	2
ontime	5146.4000766873
livetime	4667.513220286
ontime7	5146.4000766873
l2events	4068



## 2 OBI

### 2.1 OBI

#### 2.1.1 Images



#### 2.1.2 Bias

Chip 7



### 2.1.3 Parameters

obi_num	0
ascdsver	7.6.8
caldbver	3.2.2
date	2006-06-22T04:28:09
revision	2

sched_exp_time	5000.000000
ontime	6100.3910651207
ontime7	6100.3910651207
l1events	8532

### 2.1.4 Events

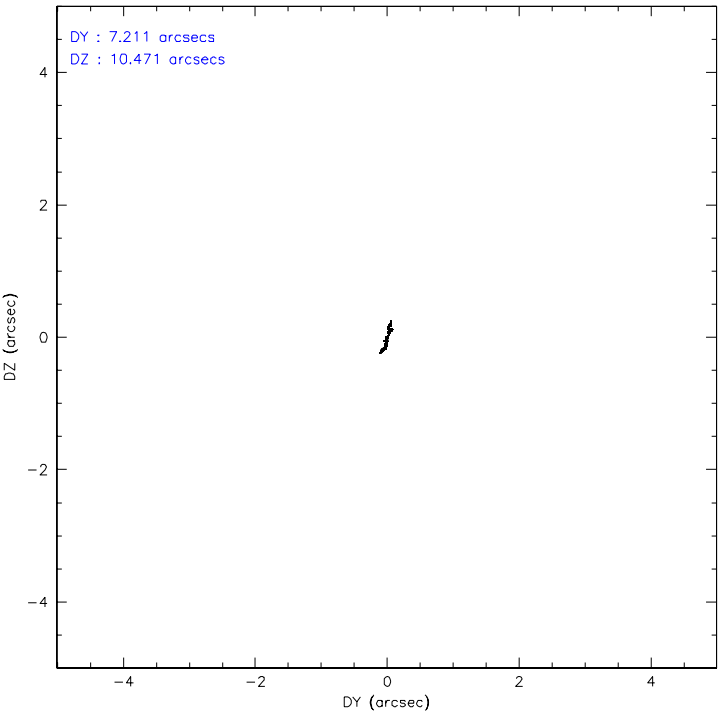
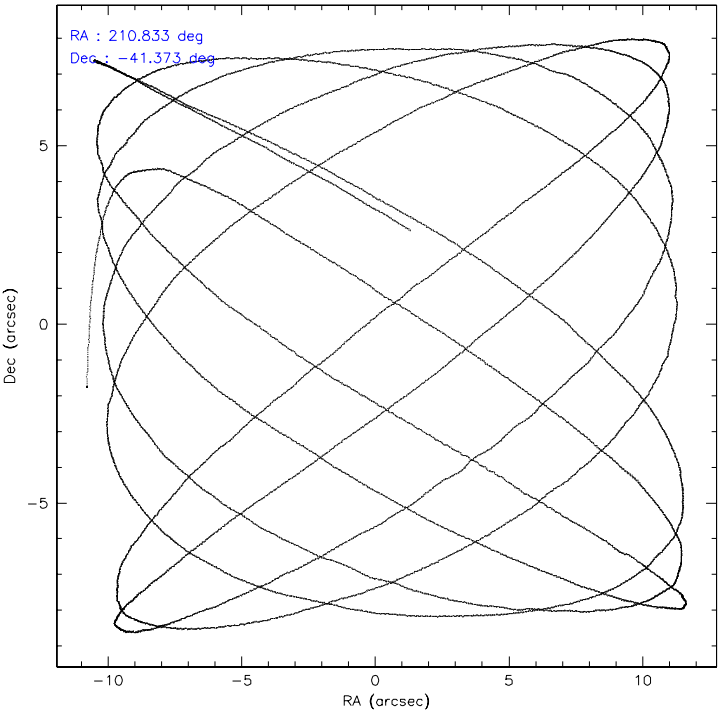
	<b>ccd 7</b>
level 1 events	8532
rejected events	4357
rejected %	51%

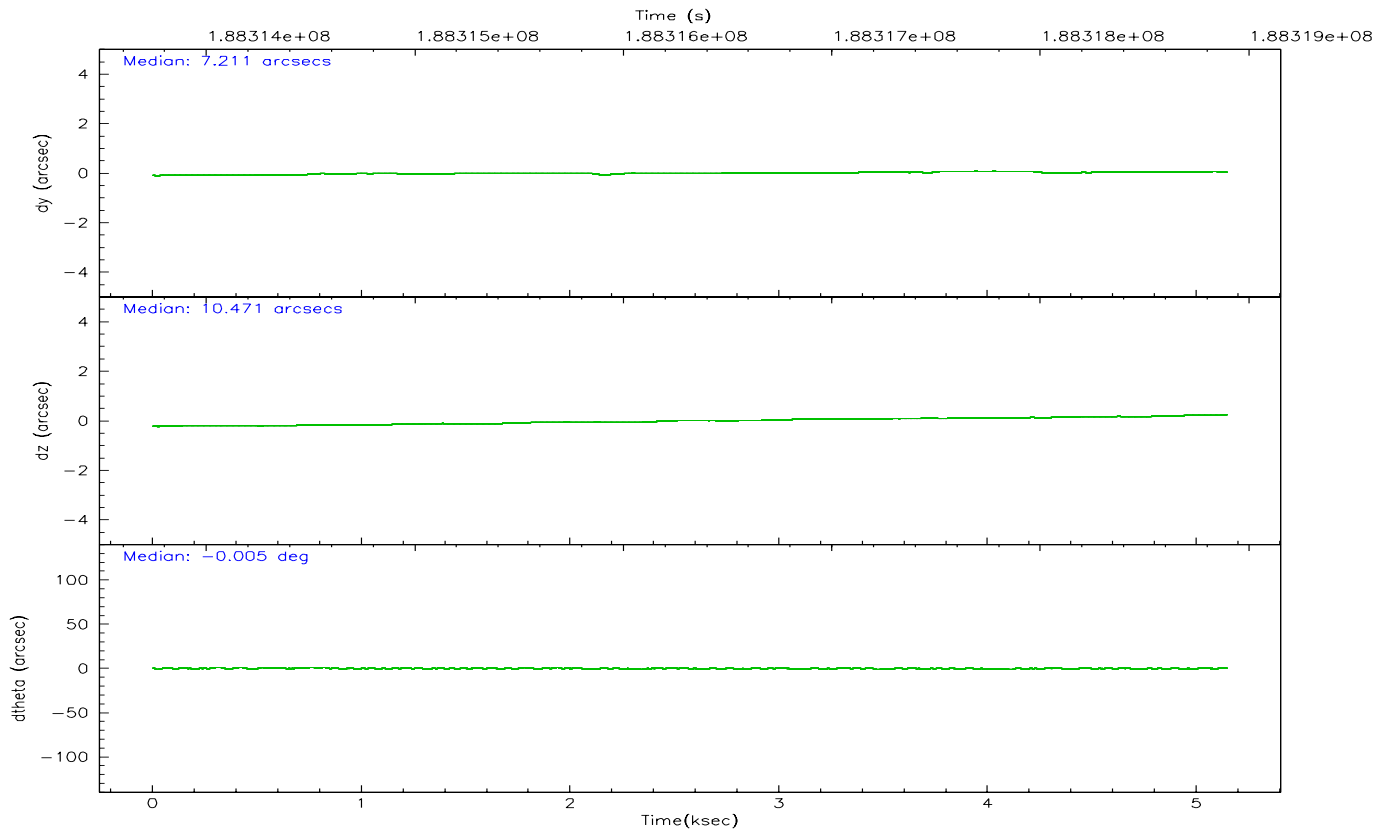
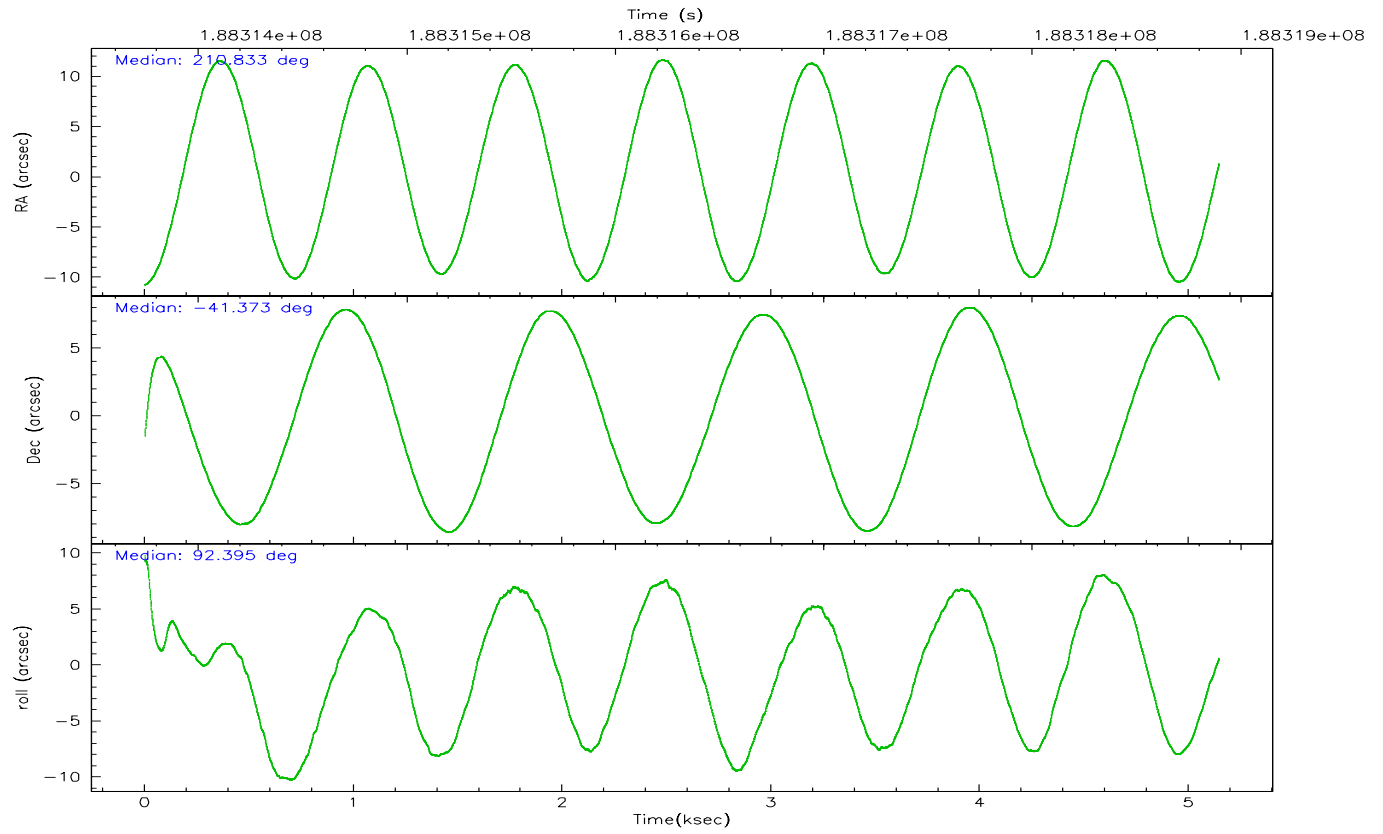
	<b>ccd 7</b>
grade 0 events	850
	9%
grade 1 events	13
	0%
grade 2 events	1097
	12%
grade 3 events	520
	6%
grade 4 events	477
	5%
grade 5 events	477
	5%
grade 6 events	1699
	19%
grade 7 events	3399
	39%

## 2.2 Compared Parameters

Parameter	Planned	Actual	Parameter	Planned	Actual
Instrument	ACIS	ACIS	Obspar format version number	6	6
Detector	ACIS-7	ACIS-7	Obspar file type	PREDICTED	ACTUAL
Grating	NONE	NONE	Obspar update status	NONE	UPDATED
Data mode	FAINT	FAINT	On-chip summing requested	N	N
Observation mode	POINTING	POINTING	Subarray requested	1/8	1/8
Pointing RA	210.853263	210.8333112350255	Subarray start row	0	449
Pointing Dec	-41.396168	-41.37337852442687	Subarray row count	1024	128
Pointing Roll	92.262223	92.40567698008587	Alternating exposures requested	N	N
SIM focus pos (mm)	-0.684267	-0.6828225247311905	Primary exposure time	0.000000	0.4
SIM defocus (mm)	0	0.001444936568705701			
SIM translation stage pos (mm)	-190.132523	-190.1400660498719			
SIM translation stage offset (mm)	0	0.00754346686406393			
Observation start time	188313893.184000	188312793.39243			
Observation start date	2003-12-20T13:23:49	2003-12-20T13:06:33			
Observation end time	188318893.184000	188319778.25523			
Observation end date	2003-12-20T14:47:09	2003-12-20T15:02:58			
Read mode	TIMED	TIMED			

2.3 Aspect





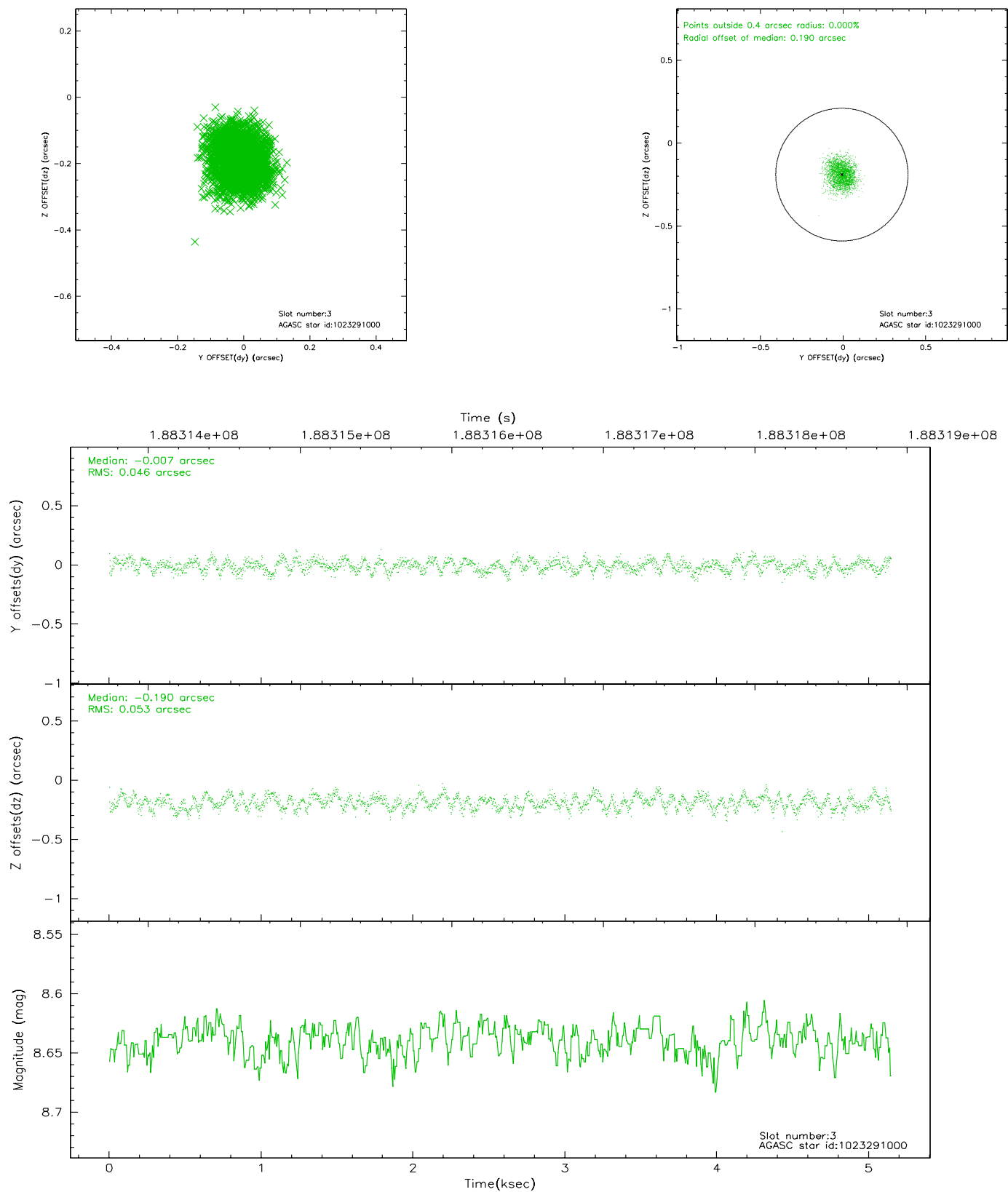
### Slot Statistics

slot	status	id	mag	n_pts	med_dy	med_dz	dr1	dr2	ra	dec	mean_y	mean_z
0	FID	ACIS-S-2	7.10	1256	-0.030	0.021	0.007	0.011	0.000000	0.000000	-759.96	-1731.71
1	FID	ACIS-S-4	7.20	1256	0.016	0.009	0.005	0.008	0.000000	0.000000	2152.79	175.59
2	FID	ACIS-S-5	7.22	1256	-0.017	-0.021	0.006	0.011	0.000000	0.000000	-1811.32	170.50
3	GUIDE	1023291000	8.64	2512	-0.007	-0.190	0.075	0.117	210.097476	-41.108006	1108.33	2007.78
4	GUIDE	1023291688	8.66	2512	-0.076	-0.113	0.080	0.129	210.168569	-41.185177	825.11	1824.54
5	GUIDE	1023822680	8.87	2510	0.053	0.143	0.067	0.107	211.176618	-41.286245	359.88	-888.68
6	GUIDE	1023824840	9.43	2509	0.135	0.124	0.084	0.134	210.682919	-41.618703	-782.53	489.19
7	GUIDE	1023292600	9.39	2509	-0.099	0.034	0.103	0.162	210.176441	-41.207792	742.30	1805.33

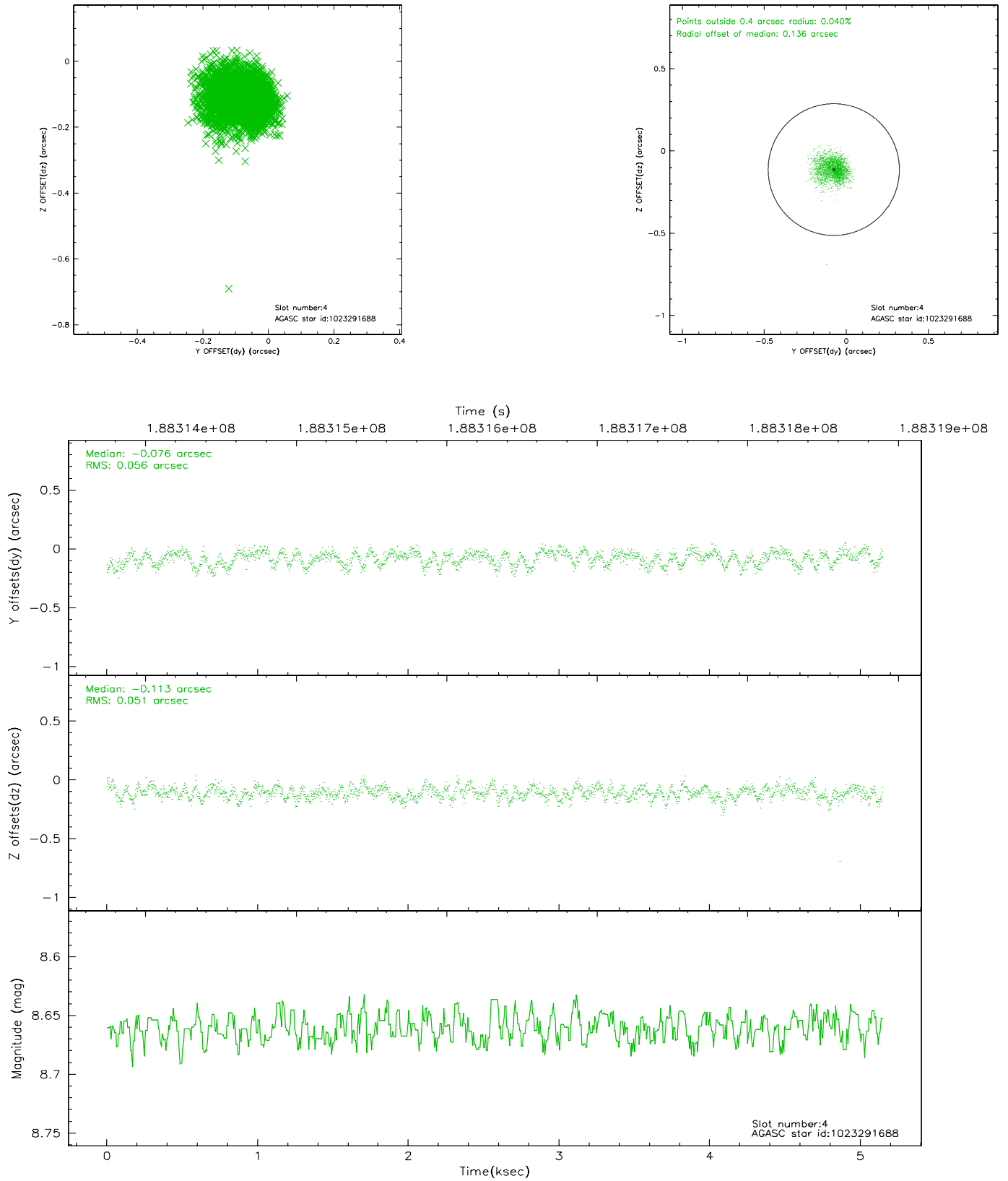


## 2.4 Star Slots

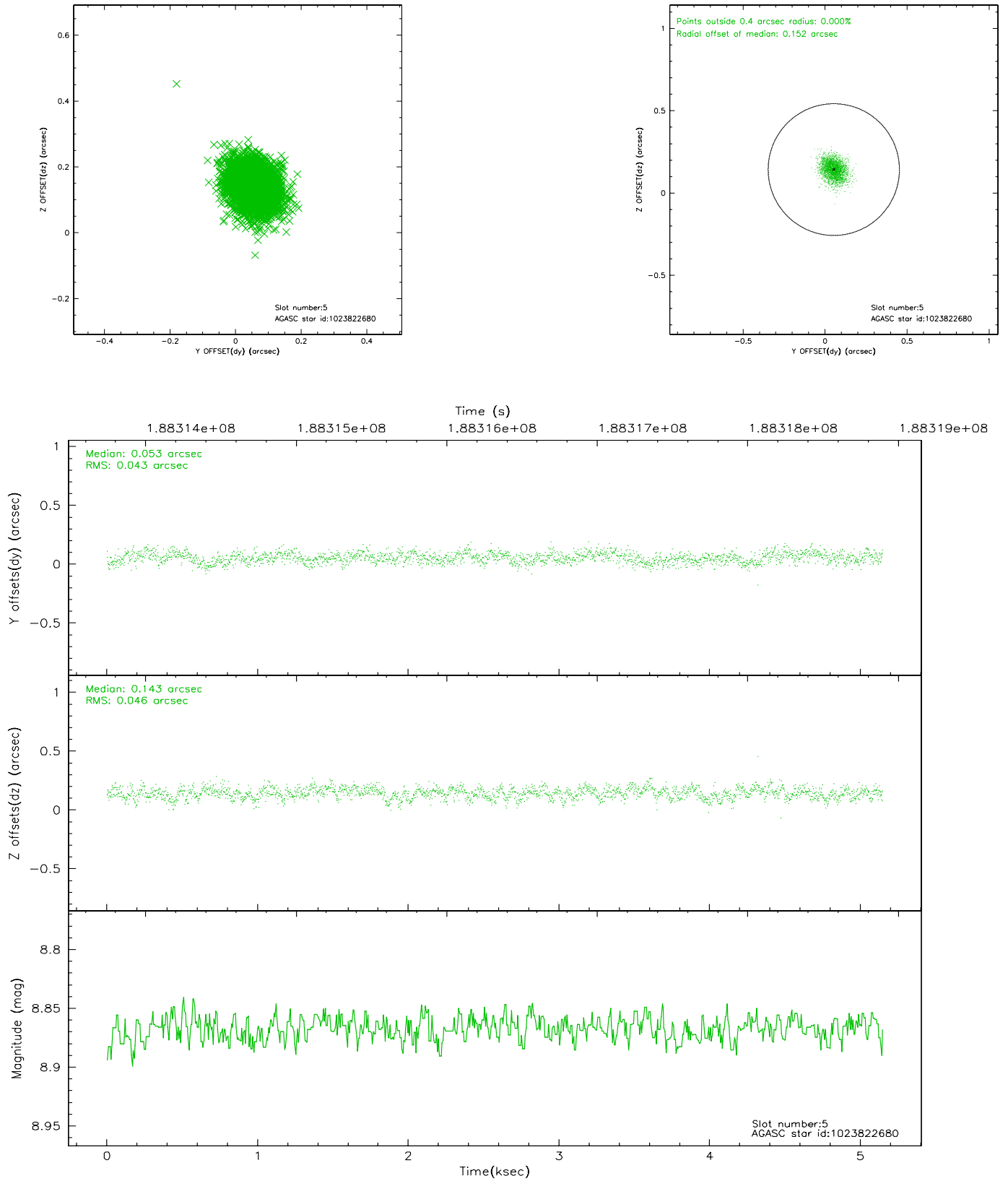
### 2.4.1 Slot 3



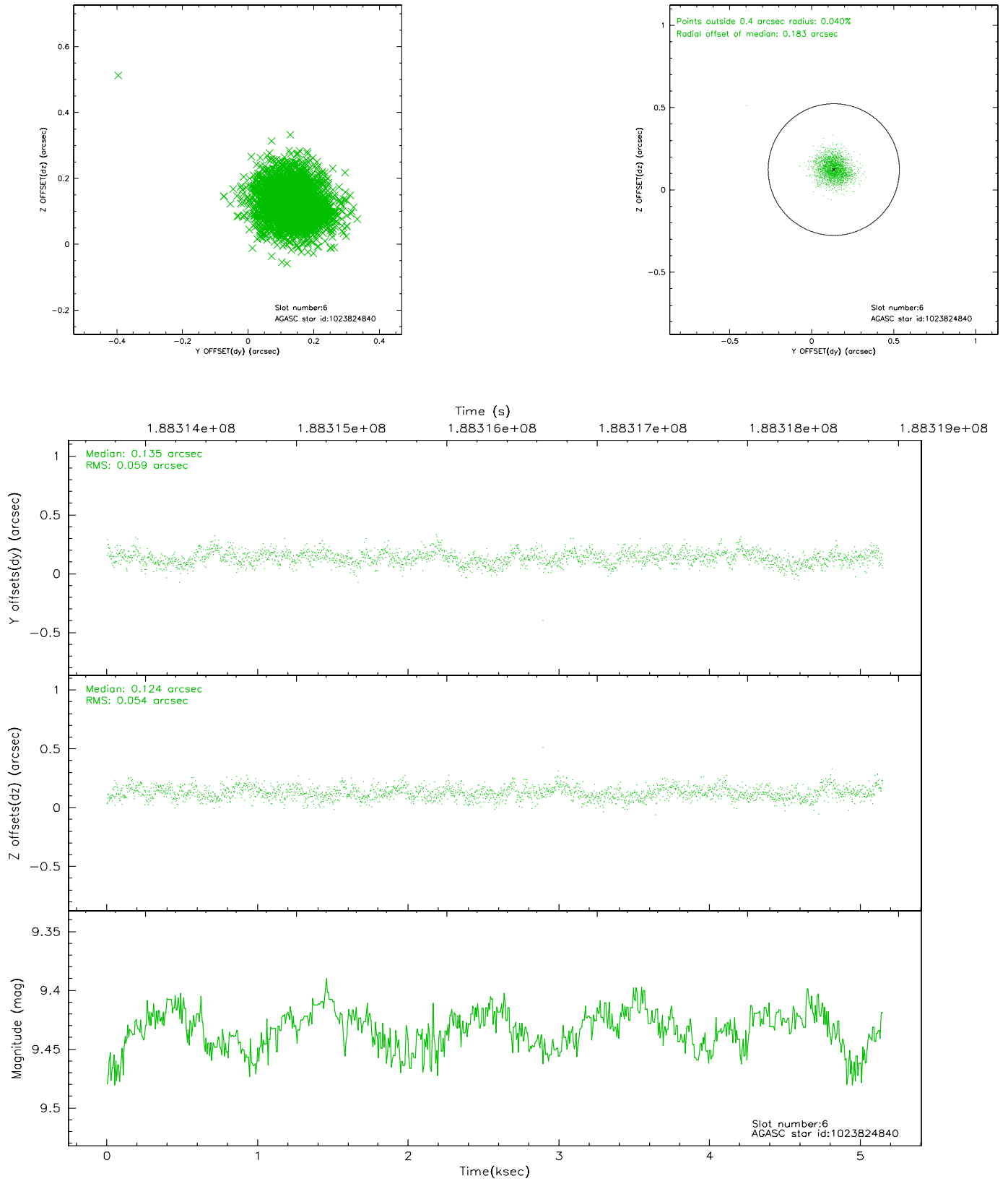
## 2.4.2 Slot 4



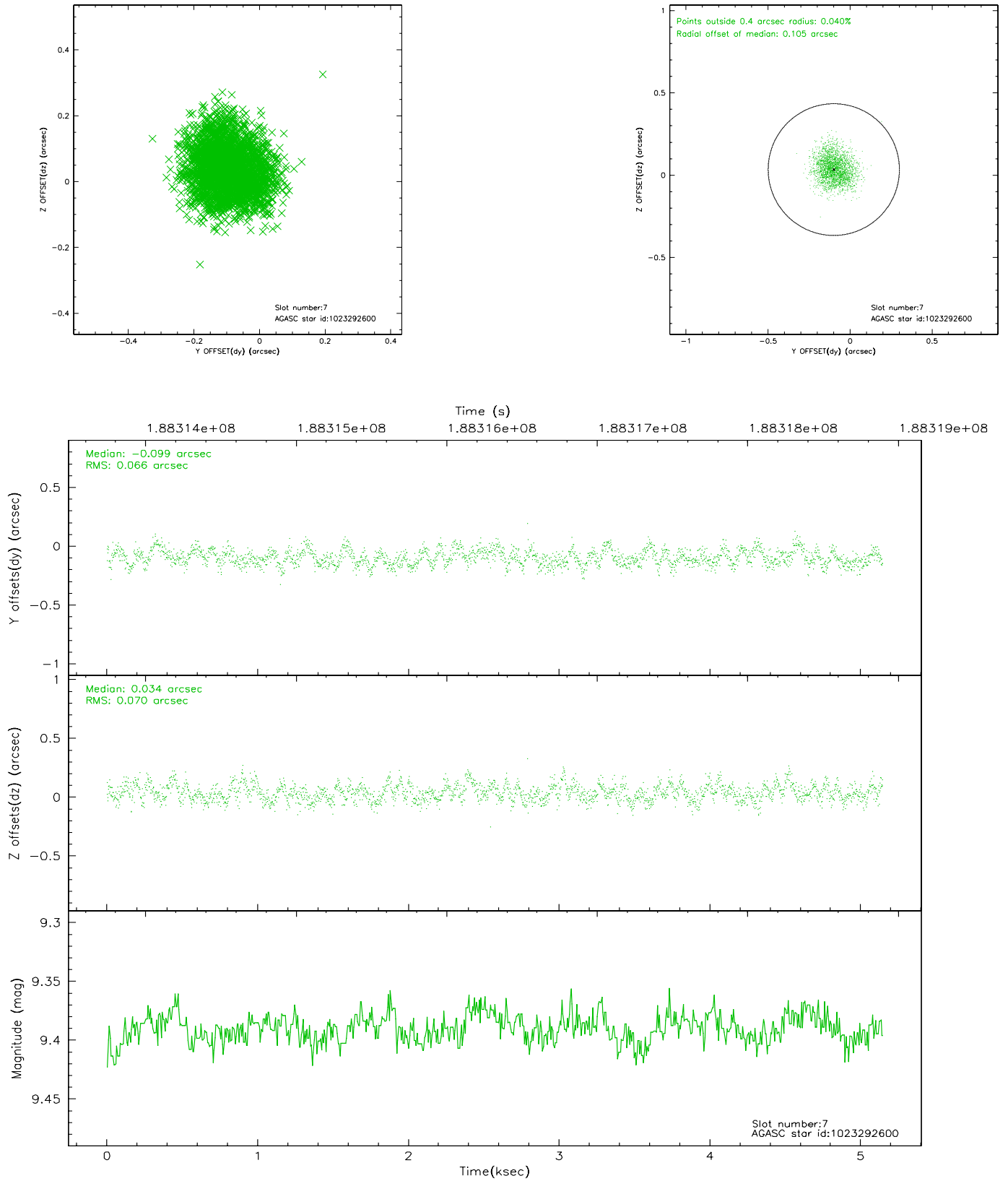
### 2.4.3 Slot 5



## 2.4.4 Slot 6

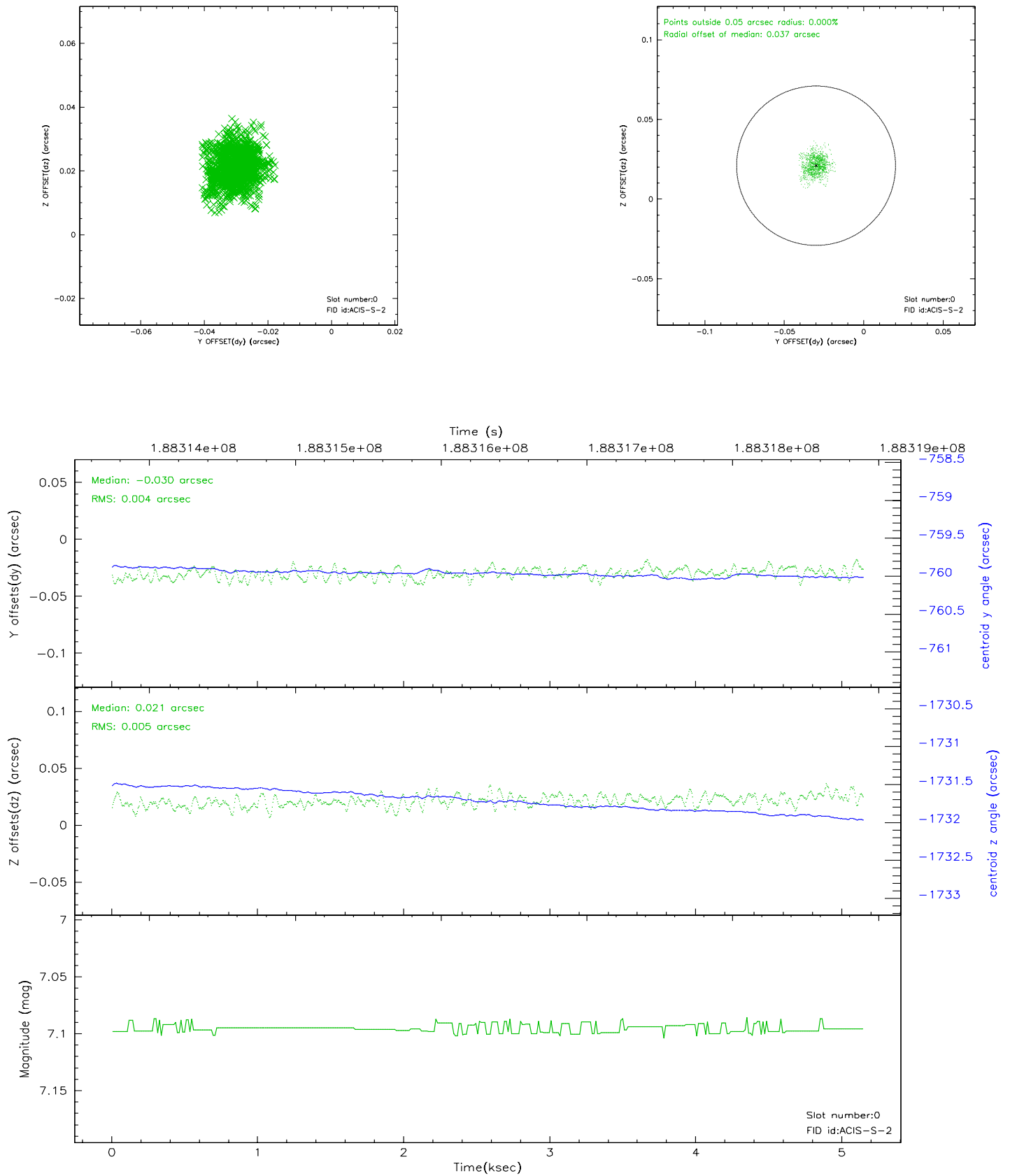


## 2.4.5 Slot 7

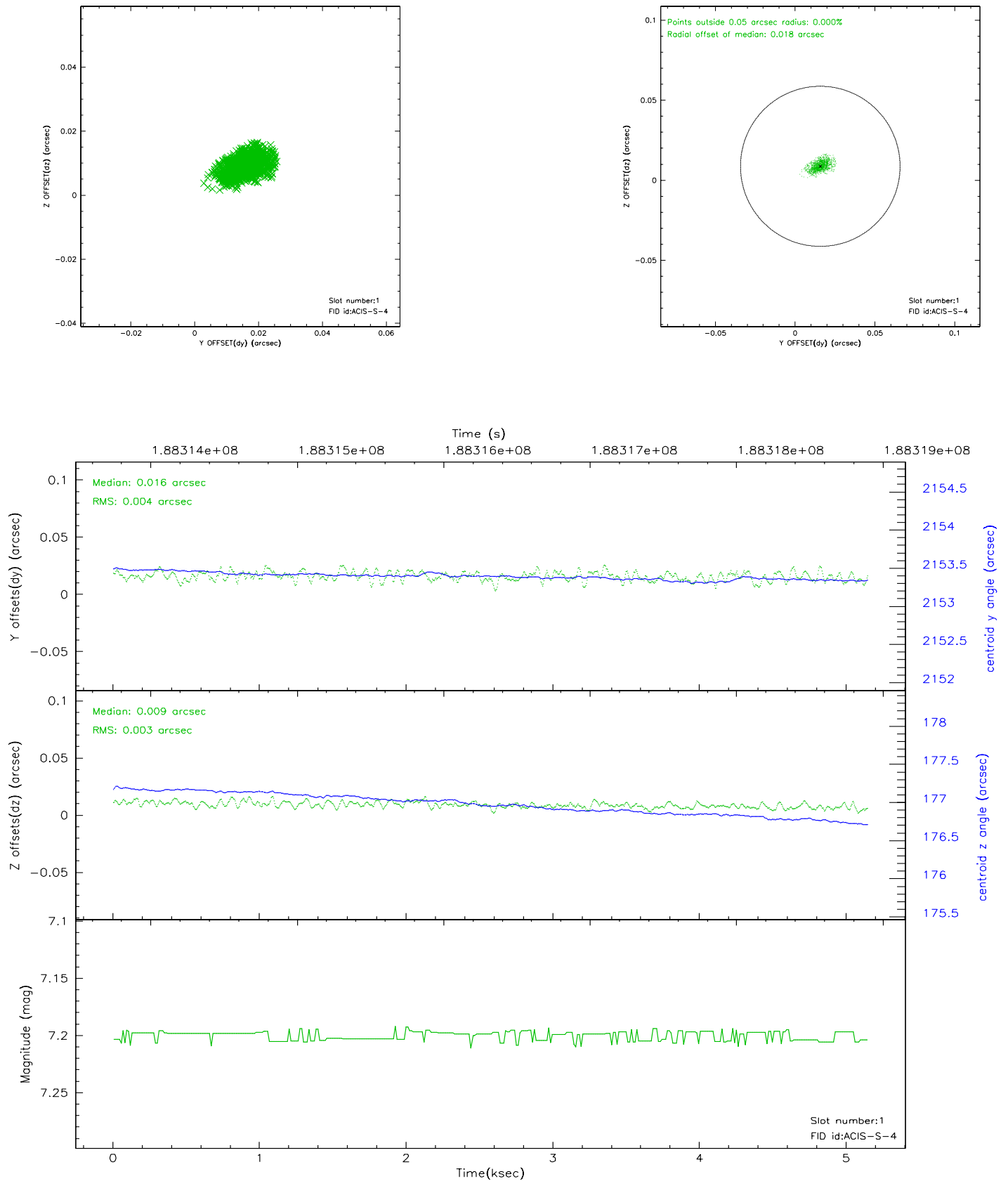


## 2.5 FID Slots

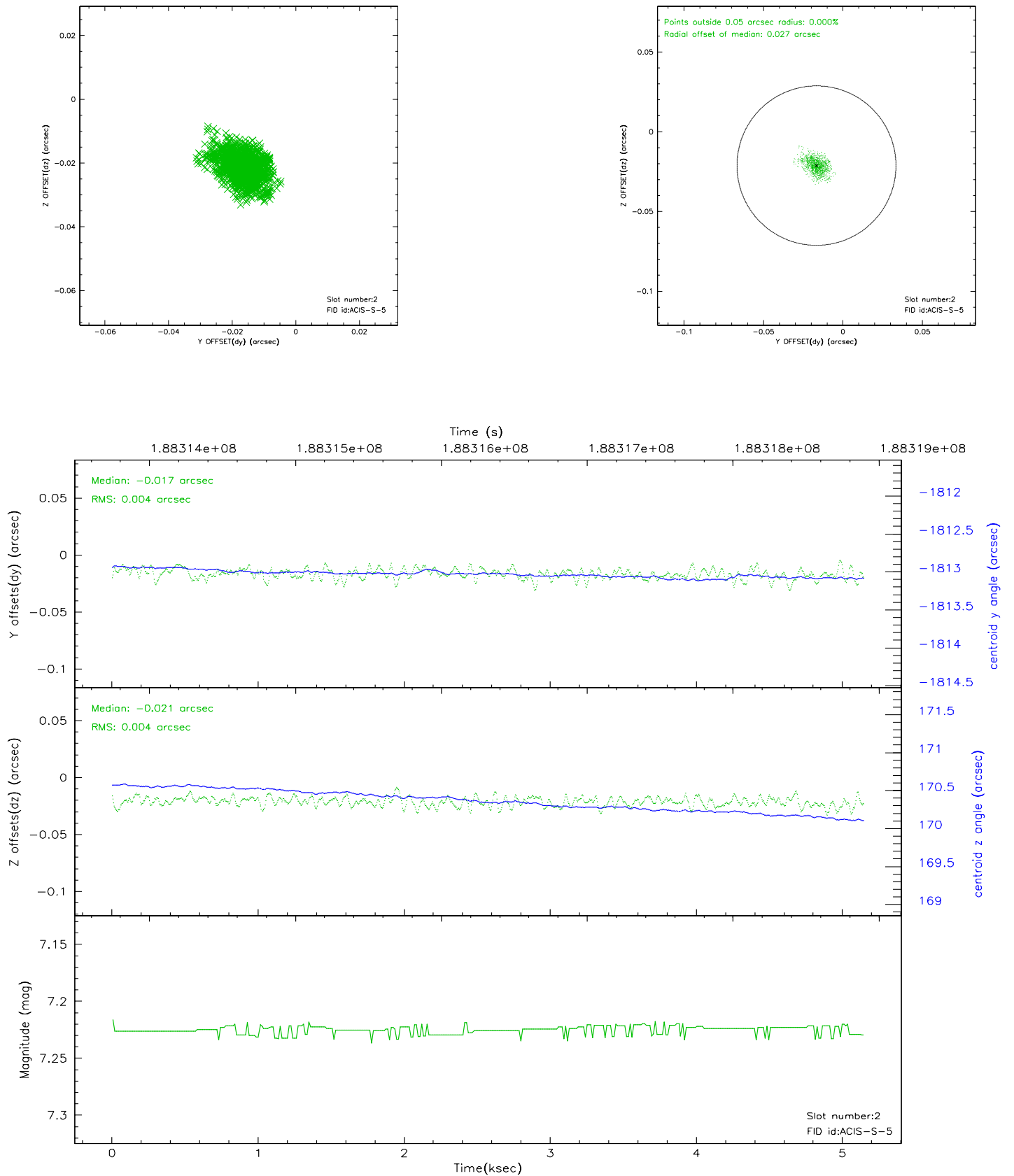
### 2.5.1 Slot 0



## 2.5.2 Slot 1



### 2.5.3 Slot 2





### 3 Point Sources

## A Summary

### A.1 Status

V&V Scientist	Jen Lauer
V&V Date (YYYY-MM-DD)	2006.06.22
V&V Edition	1
V&V Disposition and Status	OK
V&V Charge Time	5.146

### A.2 Comments