

V&V Reference Report

L2 ASCDS Version : 7.6.7.1

Observation 4554 - L2 Version 002
Chandra X-Ray Center

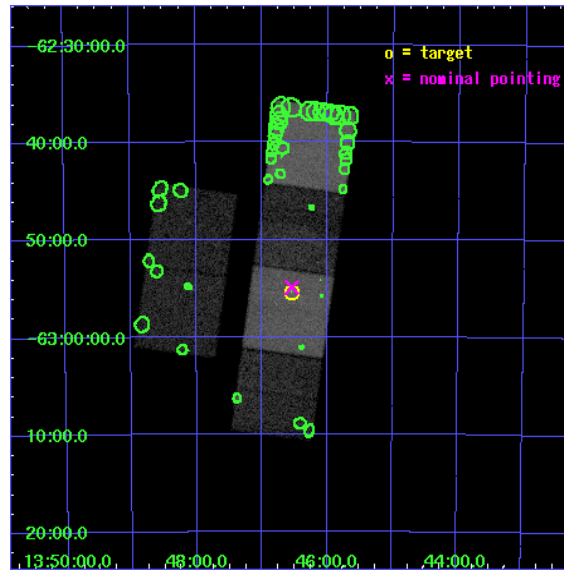
L2 Processing Date : Apr 7 2006

Contents

1	Front	2
2	OBI	3
2.1	OBI	3
2.1.1	Images	3
2.1.2	Bias	3
2.1.3	Parameters	4
2.1.4	Events	4
2.2	Compared Parameters	5
2.3	Aspect	6
2.4	Star Slots	9
2.4.1	Slot 3	9
2.4.2	Slot 4	10
2.4.3	Slot 5	11
2.4.4	Slot 6	12
2.4.5	Slot 7	13
2.5	FID Slots	14
2.5.1	Slot 0	14
2.5.2	Slot 1	15
2.5.3	Slot 2	16
3	Point Sources	17
A	Summary	18
A.1	Status	18
A.2	Comments	18

1 Front

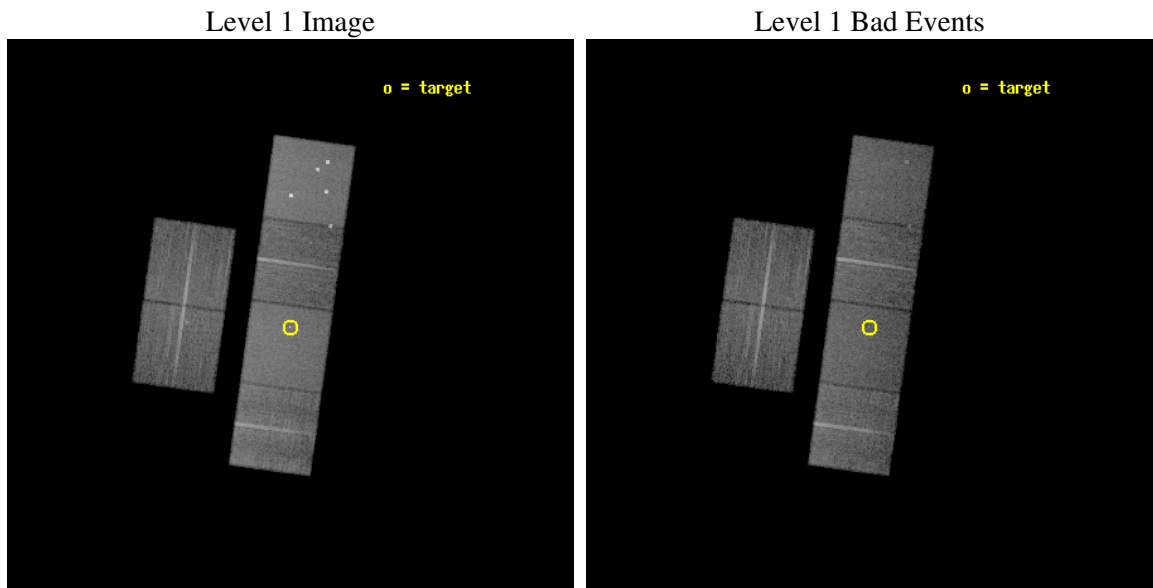
seq_num	400337
obs_id	4554
title	1WGA J1346.5-6255: A New High-Mass Microquasar?
observer	Dr. Yousaf Butt
object	1WGA J1346.5-6255
dtcycle	0
cycle	P
ra_targ	206.634583
dec_targ	-62.925
ra_nom	206.63534992741
dec_nom	-62.915366460923
roll_nom	97.926671169721
revision	2
ontime	15116.799943686
livetime	14925.381920554
ontime2	15116.799943686
ontime3	15116.799943686
ontime5	15116.799943686
ontime6	15113.558983415
ontime7	15116.799943686
ontime8	15113.558973402
l2events	192253



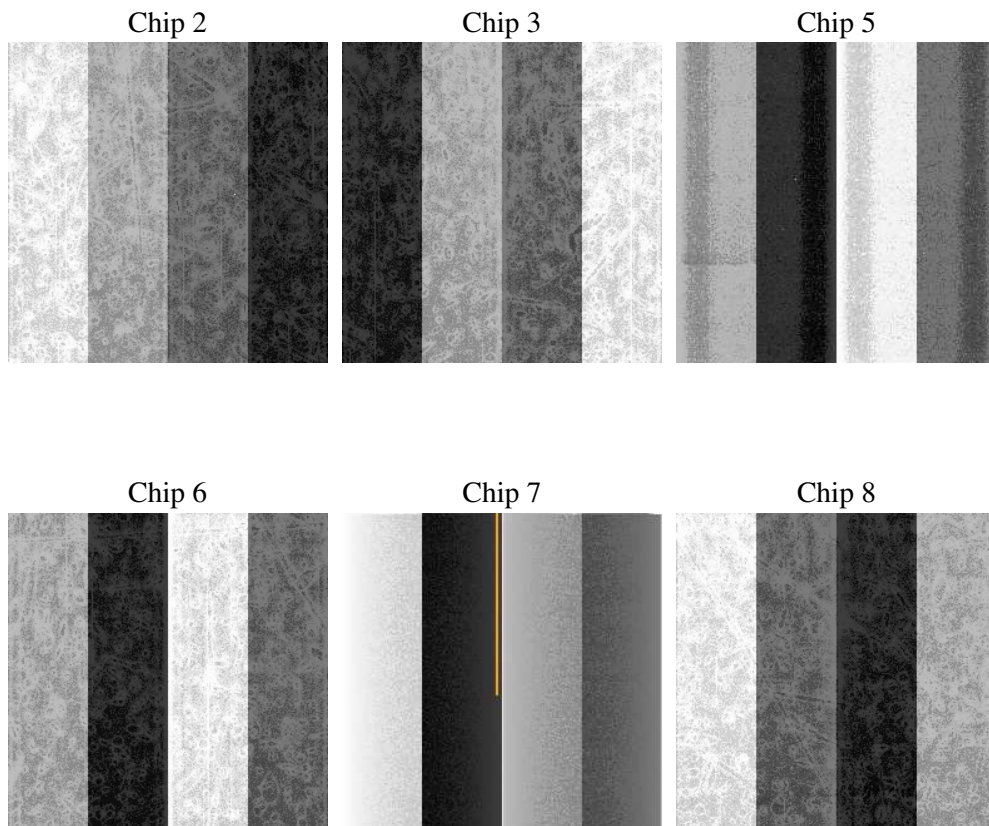
2 OBI

2.1 OBI

2.1.1 Images



2.1.2 Bias



2.1.3 Parameters

obi_num	0
ascdsver	7.6.7.1
caldsver	3.2.1
date	2006-04-07T14:55:03
revision	2

sched_exp_time	15160.880000
ontime	15122.508701473
ontime2	15122.508681566
ontime3	15122.508681566
ontime5	15122.508701473
ontime6	15119.267721295
ontime7	15122.508701473
ontime8	15119.26773119
l1events	850460

2.1.4 Events

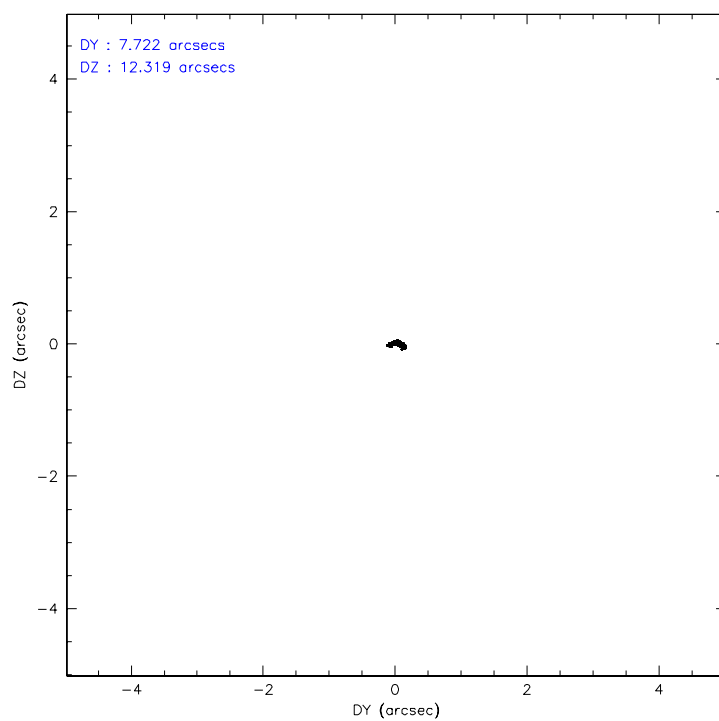
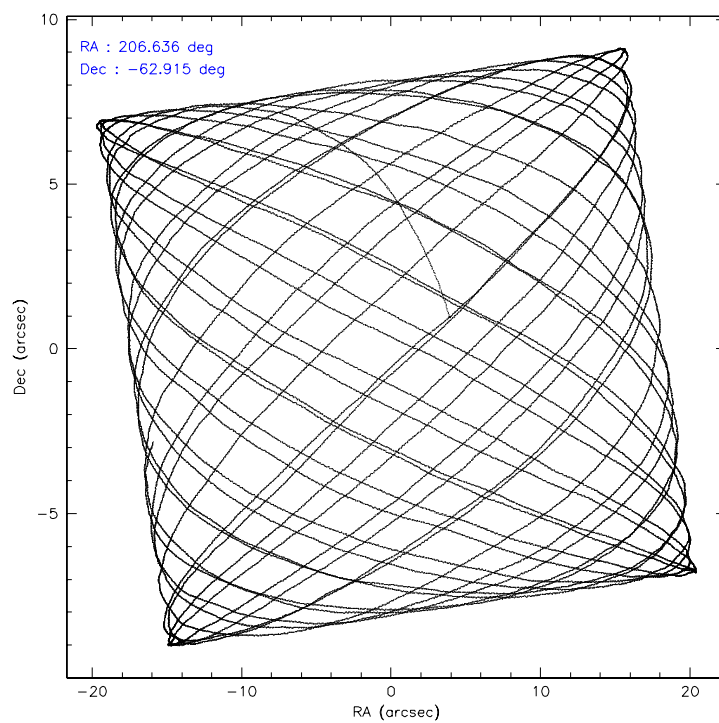
	ccd 2	ccd 3	ccd 5	ccd 6	ccd 7	ccd 8
level 1 events	119525	113403	186765	121268	163505	145994
rejected events	105402	99567	97675	103260	97850	114164
rejected %	88%	87%	52%	85%	59%	78%

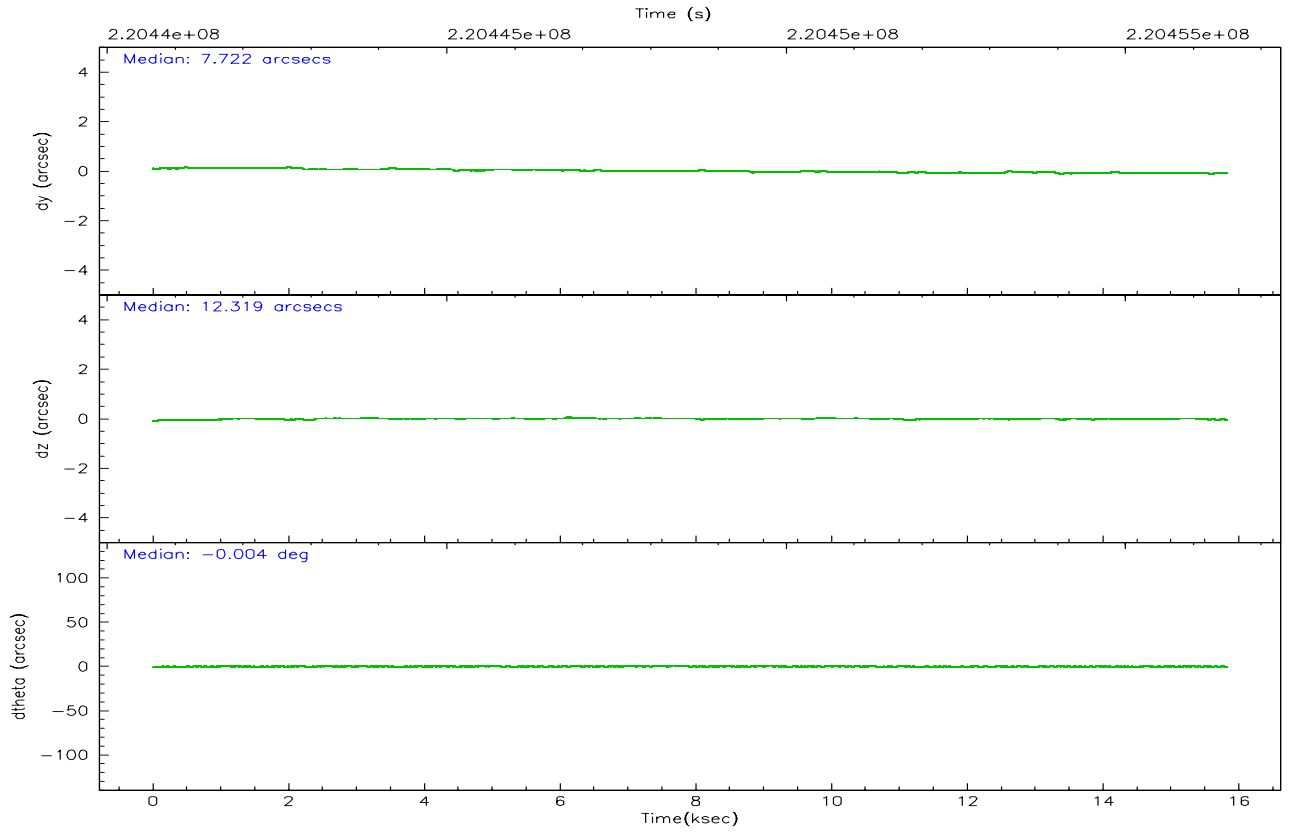
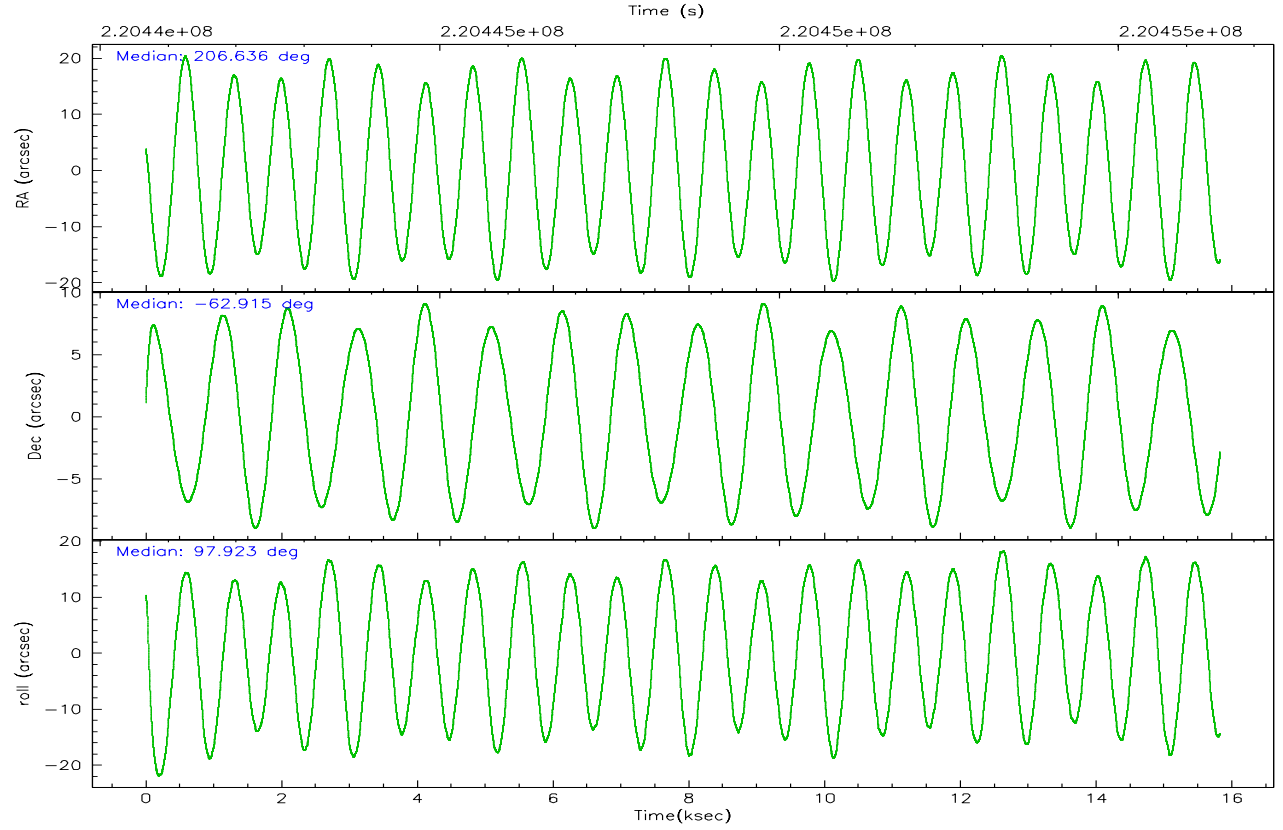
	ccd 2	ccd 3	ccd 5	ccd 6	ccd 7	ccd 8
grade 0 events	6400	6163	15125	8931	4361	10168
	5%	5%	8%	7%	2%	6%
grade 1 events	87	83	539	78	132	84
	0%	0%	0%	0%	0%	0%
grade 2 events	2866	2563	26046	3353	16556	6970
	2%	2%	13%	2%	10%	4%
grade 3 events	1288	1343	1793	1540	3567	3314
	1%	1%	0%	1%	2%	2%
grade 4 events	1255	1397	1715	1380	3563	3138
	1%	1%	0%	1%	2%	2%
grade 5 events	4589	5155	8650	5394	10734	6899
	3%	4%	4%	4%	6%	4%
grade 6 events	2319	2382	44450	2811	37636	8245
	1%	2%	23%	2%	23%	5%
grade 7 events	100721	94317	88447	97781	86956	107176
	84%	83%	47%	80%	53%	73%

2.2 Compared Parameters

Parameter	Planned	Actual	Parameter	Planned	Actual
Instrument	ACIS	ACIS	Obspar format version number	6	6
Detector	ACIS-235678	ACIS-235678	Obspar file type	PREDICTED	ACTUAL
Grating	NONE	NONE	Obspar update status	NONE	UPDATED
Data mode	VFAINT	VFAINT	On-chip summing requested	N	N
Observation mode	POINTING	POINTING	Subarray requested	NONE	NONE
Pointing RA	206.672807	206.6353499274147	Alternating exposures requested	N	N
Pointing Dec	-62.936579	-62.91536646092286	Primary exposure time	0.000000	3.2
Pointing Roll	97.803384	97.92667116972086			
SIM focus pos (mm)	-0.684267	-0.6828225247311905			
SIM defocus (mm)	0	0.001444936568705701			
SIM translation stage pos (mm)	-190.132523	-190.1425803651734			
SIM translation stage offset (mm)	0	0.01005778216563158			
Observation start time	220441343.184000	220440141.12766			
Observation start date	2004-12-26T09:41:19	2004-12-26T09:22:21			
Observation end time	220456503.184000	220456727.16591			
Observation end date	2004-12-26T13:53:59	2004-12-26T13:58:47			
Read mode	TIMED	TIMED			

2.3 Aspect



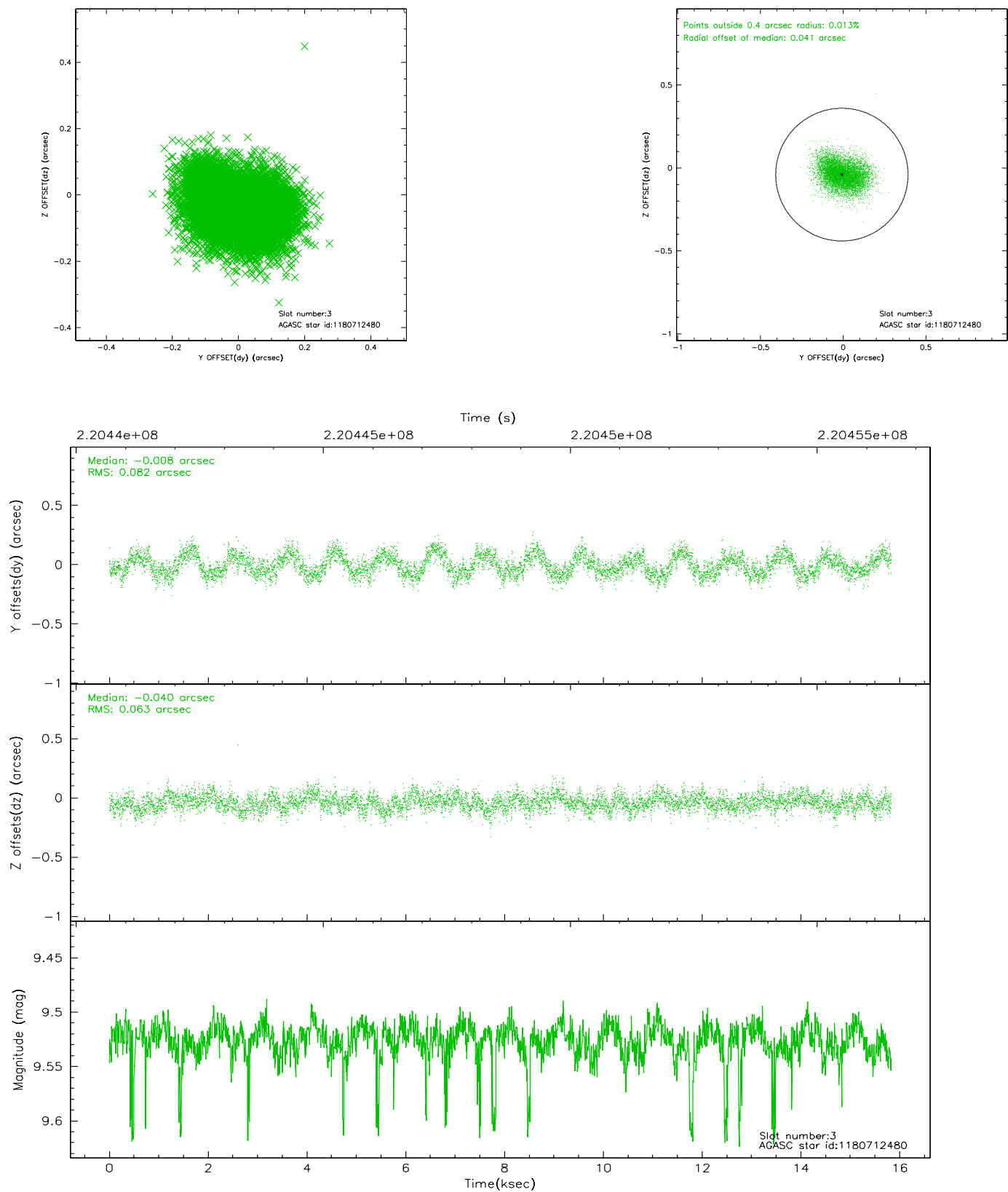


Slot Statistics

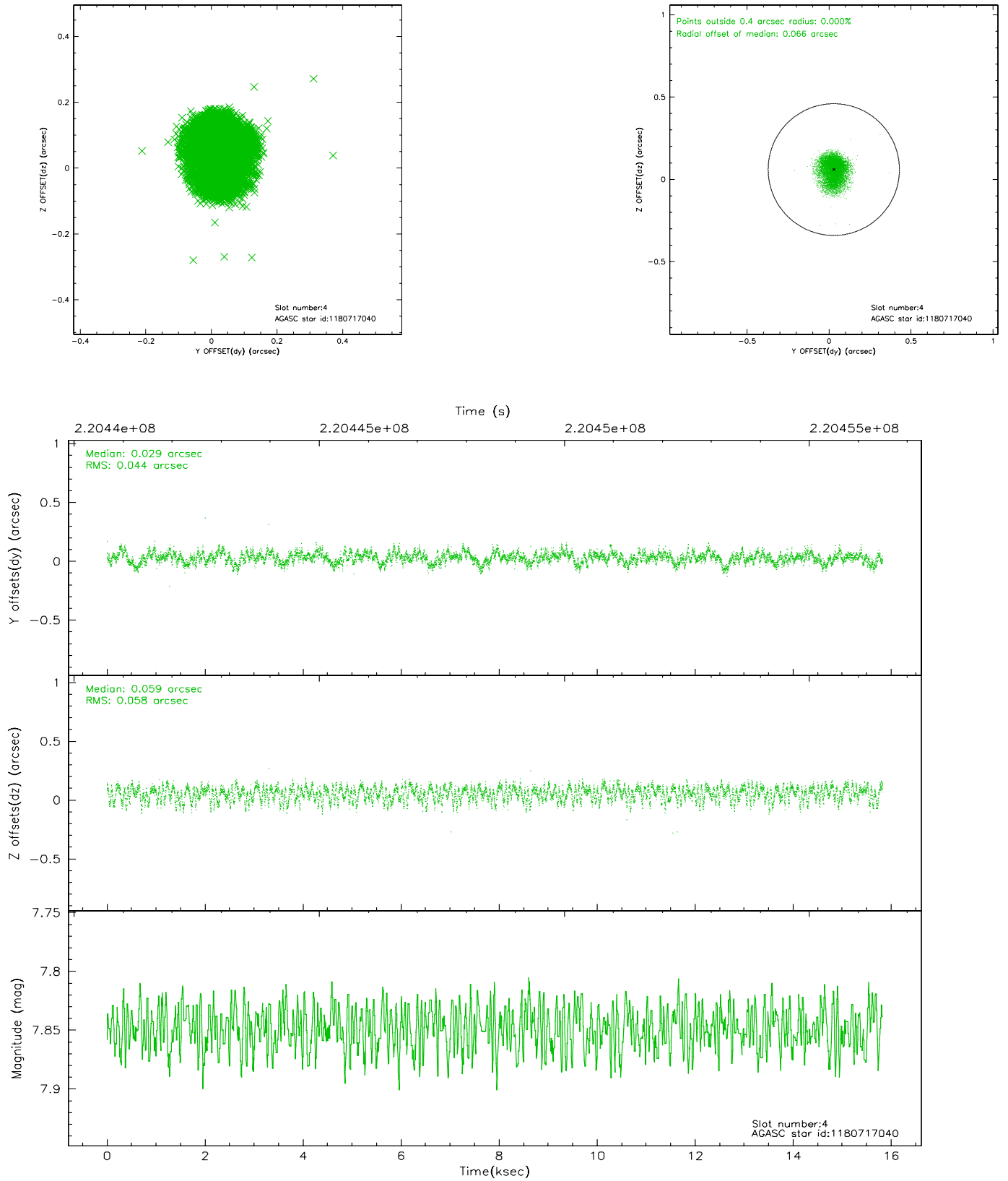
slot	status	id	mag	n_pts	med_dy	med_dz	dr1	dr2	ra	dec	mean_y	mean_z
0	FID	ACIS-S-2	7.10	3861	0.002	-0.010	0.006	0.010	0.000000	0.000000	-760.51	-1733.58
1	FID	ACIS-S-4	7.20	3859	0.037	0.002	0.006	0.011	0.000000	0.000000	2152.68	174.62
2	FID	ACIS-S-5	7.23	3861	-0.070	0.017	0.007	0.013	0.000000	0.000000	-1813.06	168.63
3	GUIDE	1180712480	9.53	7701	-0.008	-0.040	0.111	0.177	206.355056	-63.162303	-735.97	622.34
4	GUIDE	1180717040	7.85	7717	0.029	0.059	0.078	0.123	208.136771	-63.356115	-1843.61	-2132.38
5	GUIDE	1180724504	9.32	7719	-0.157	-0.058	0.086	0.141	205.862671	-62.438910	1949.69	1094.90
6	GUIDE	1180728632	9.36	7716	0.044	-0.049	0.095	0.157	205.841489	-63.568252	-2080.17	1630.02
7	GUIDE	1180731272	9.19	7718	0.086	0.096	0.073	0.120	207.870815	-63.500080	-2288.69	-1628.24

2.4 Star Slots

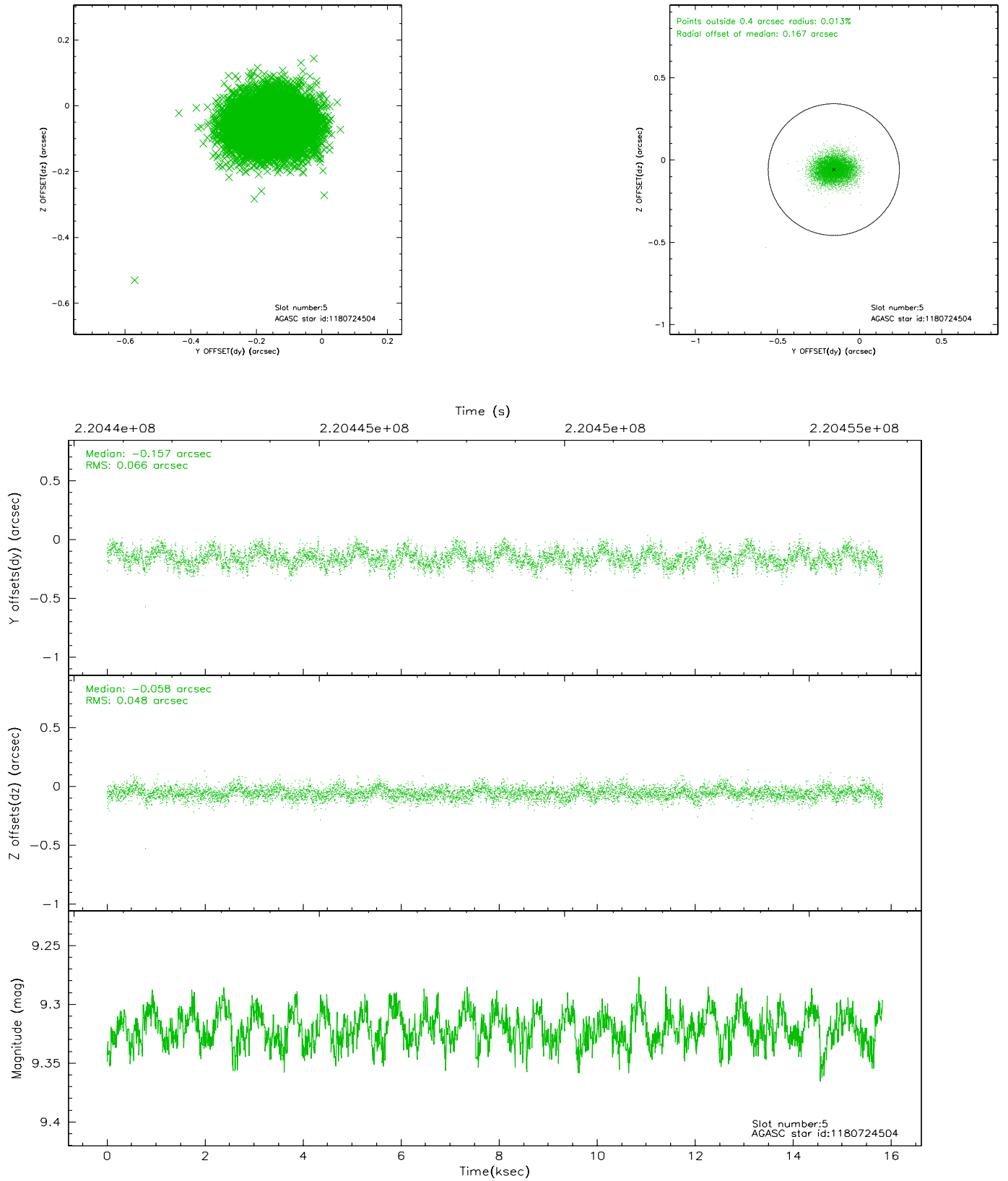
2.4.1 Slot 3



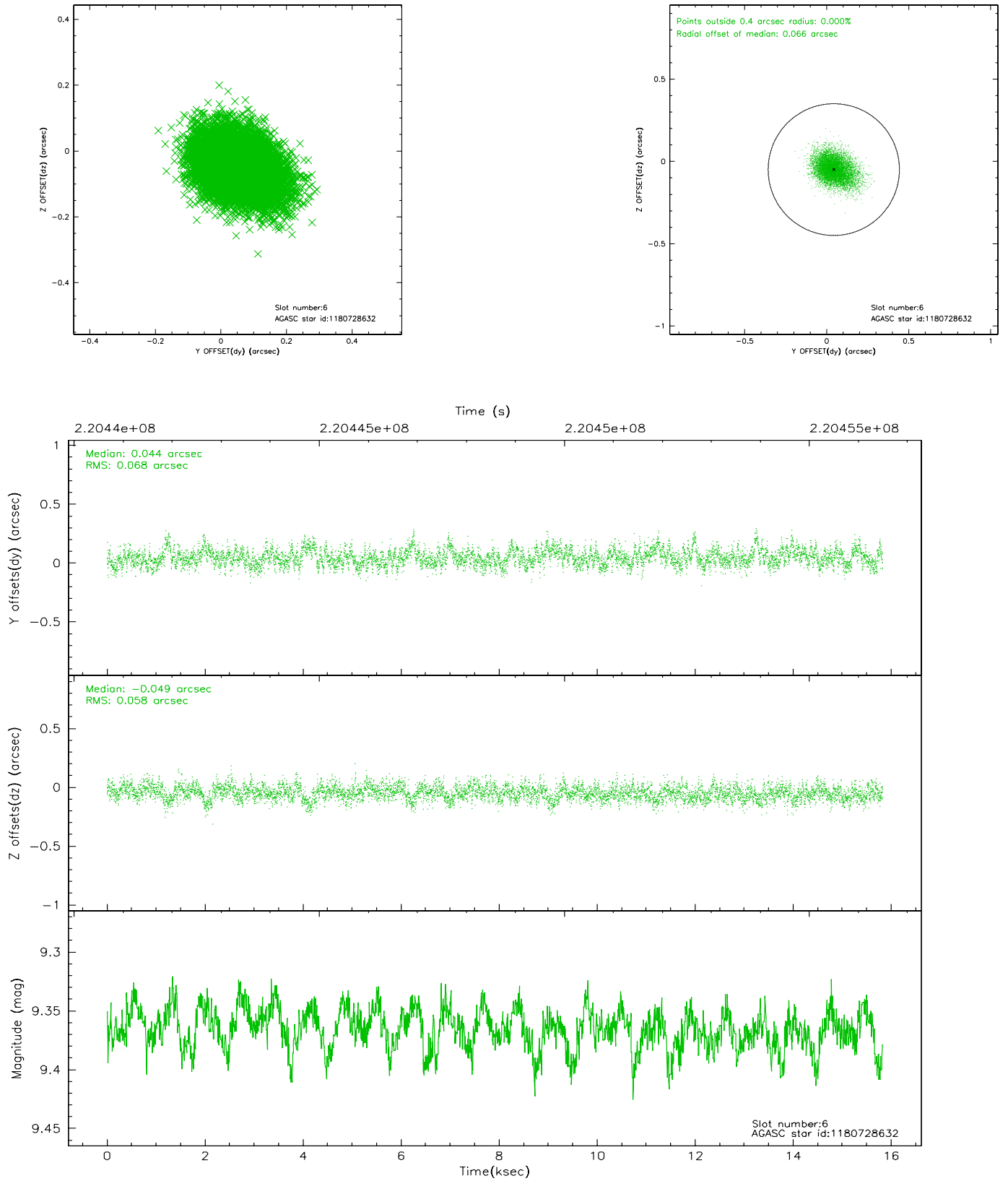
2.4.2 Slot 4



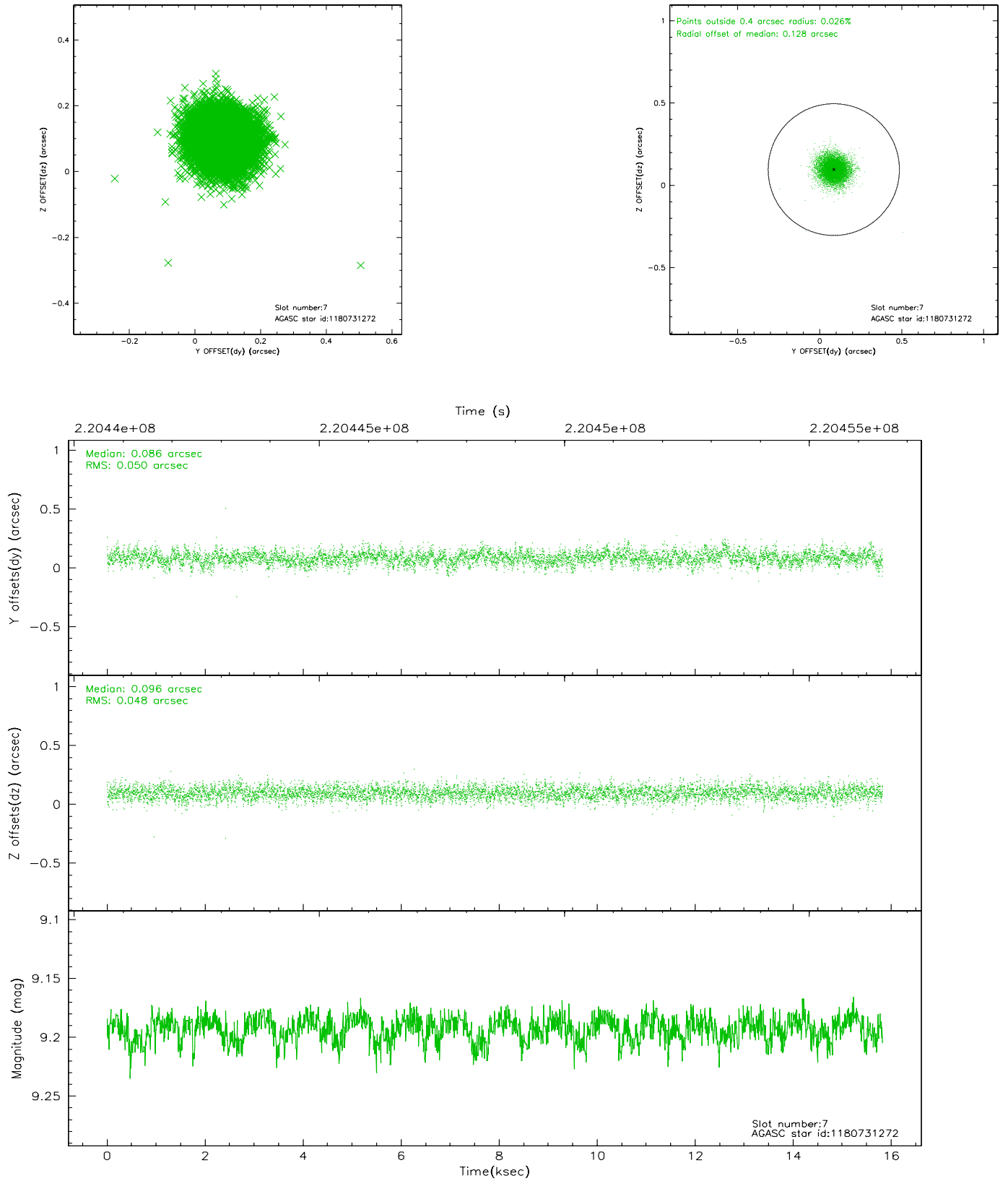
2.4.3 Slot 5



2.4.4 Slot 6

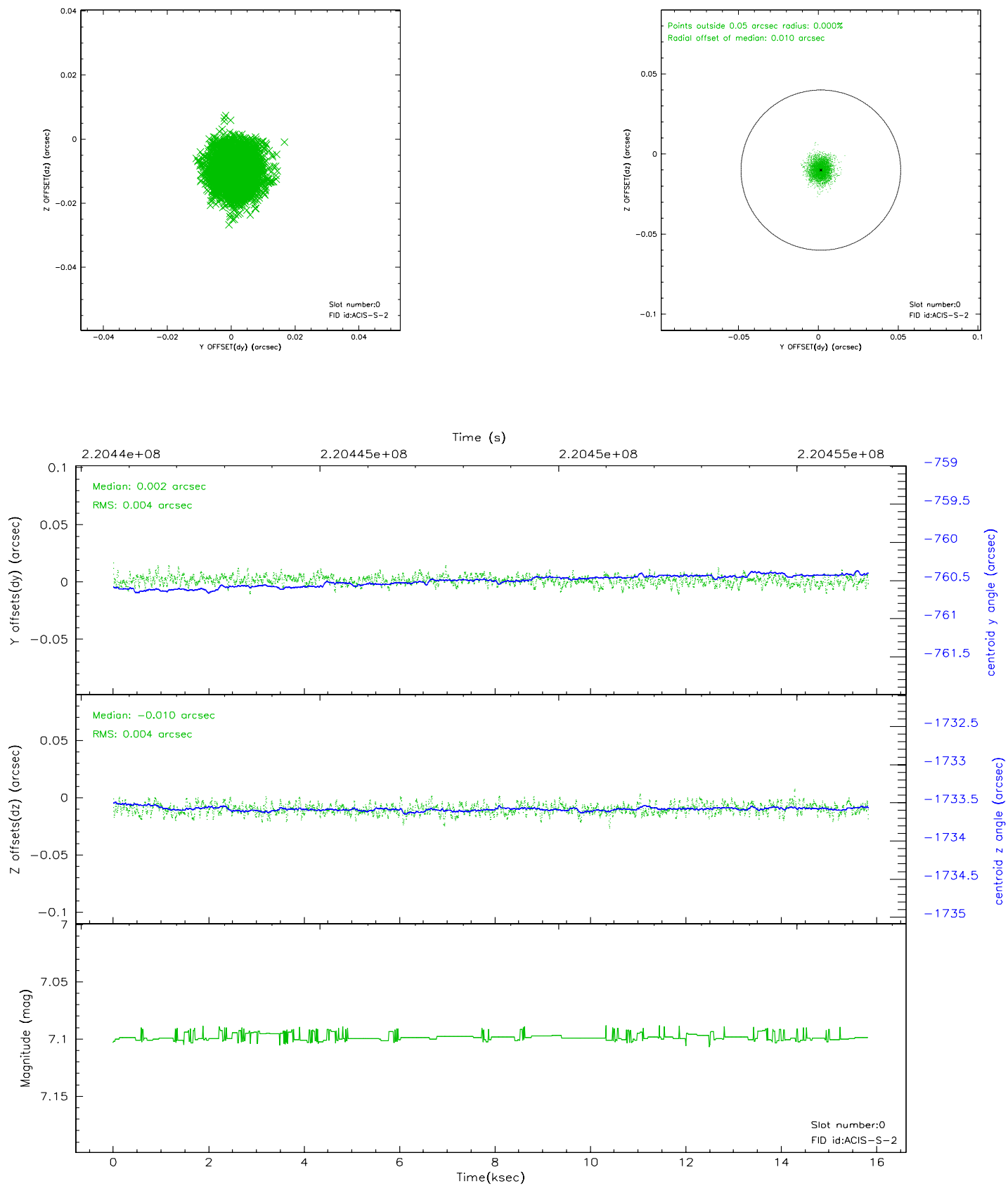


2.4.5 Slot 7

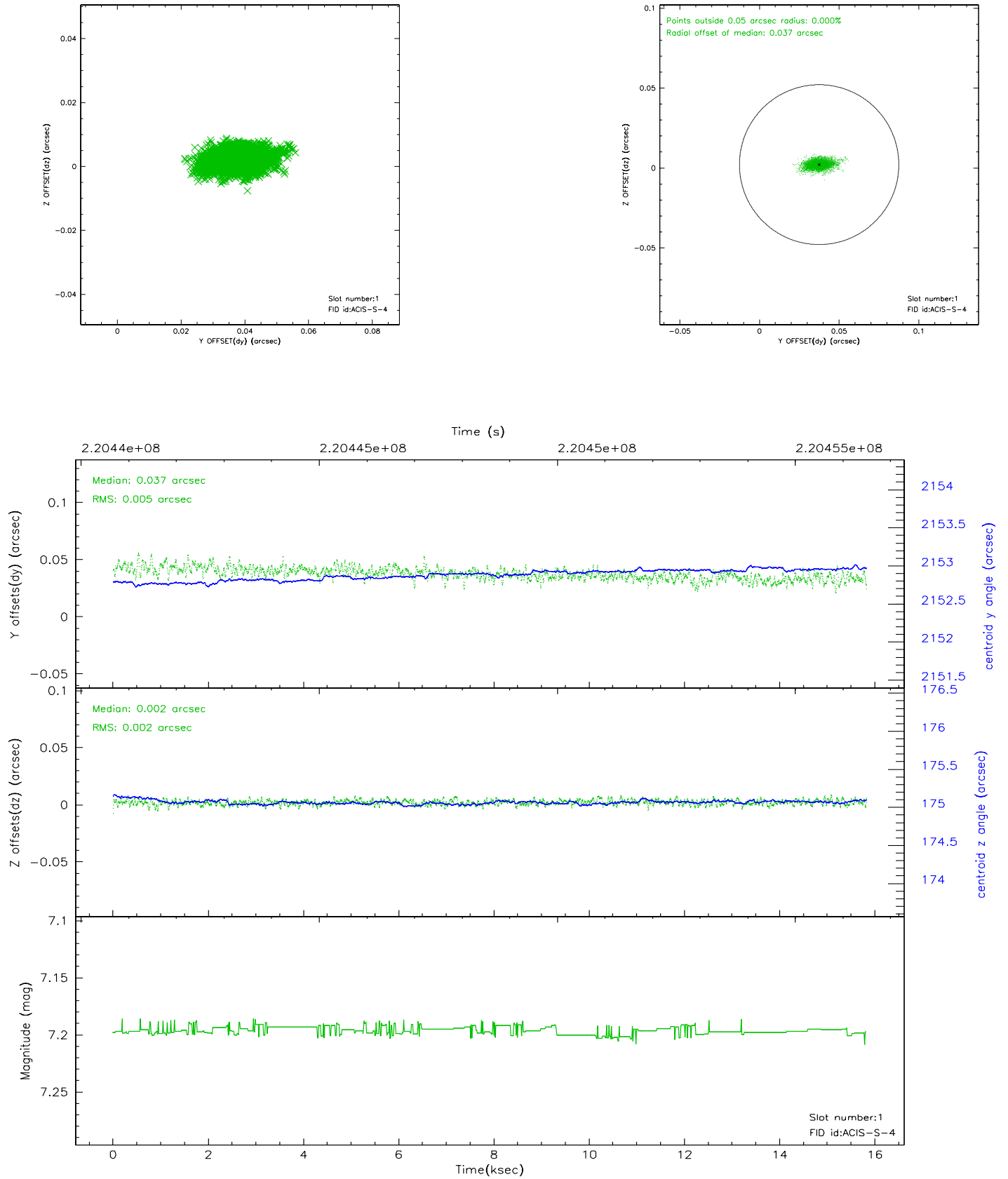


2.5 FID Slots

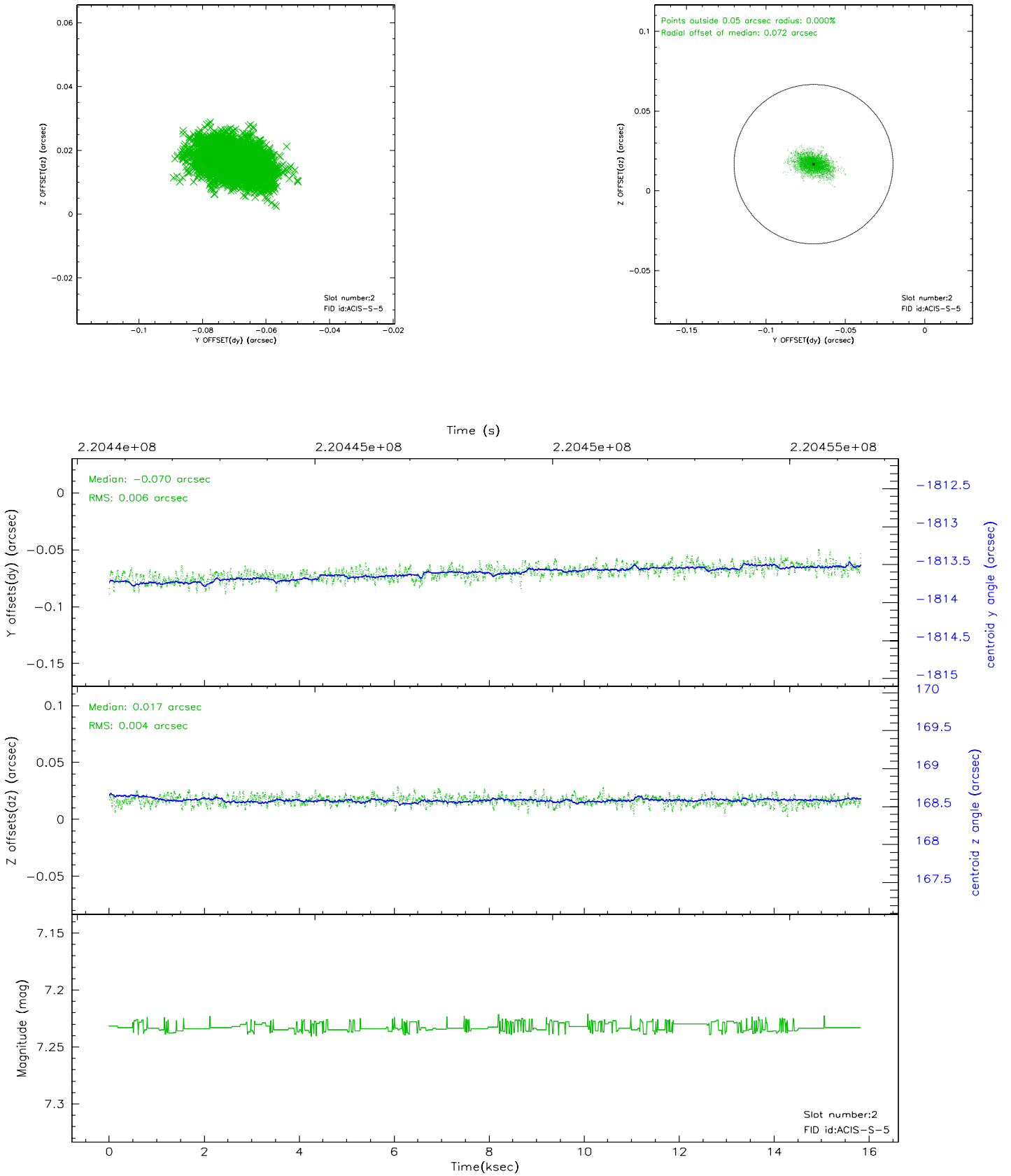
2.5.1 Slot 0



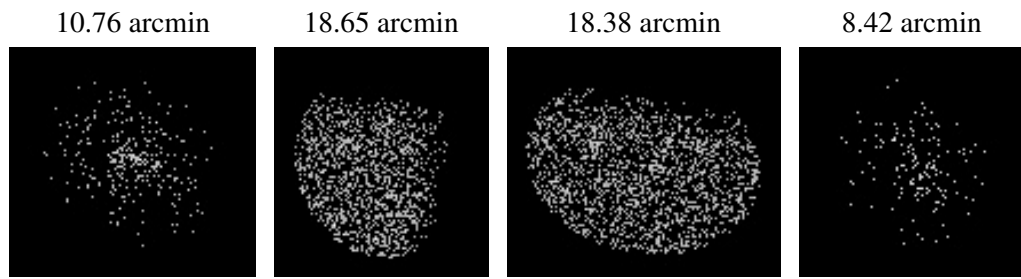
2.5.2 Slot 1



2.5.3 Slot 2



3 Point Sources



A Summary

A.1 Status

V&V Scientist	Beth Sundheim
V&V Date (YYYY-MM-DD)	2006.04.07
V&V Edition	1
V&V Disposition and Status	OK
V&V Charge Time	15.11679

A.2 Comments