

V&V Reference Report

L2 ASCDS Version : 7.6.7.1

Observation 6167 - L2 Version 002
Chandra X-Ray Center

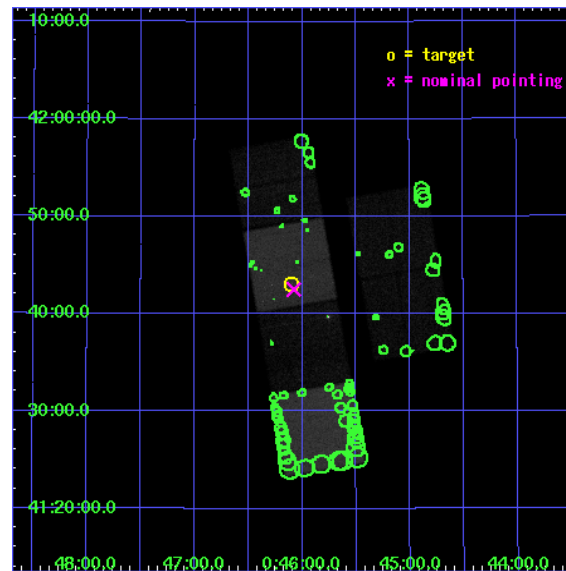
L2 Processing Date : Apr 10 2006

Contents

1	Front	2
2	OBI	3
2.1	OBI	3
2.1.1	Images	3
2.1.2	Bias	3
2.1.3	Parameters	4
2.1.4	Events	4
2.2	Compared Parameters	5
2.3	Aspect	6
2.4	Star Slots	9
2.4.1	Slot 3	9
2.4.2	Slot 4	10
2.4.3	Slot 5	11
2.4.4	Slot 6	12
2.4.5	Slot 7	13
2.5	FID Slots	14
2.5.1	Slot 0	14
2.5.2	Slot 1	15
2.5.3	Slot 2	16
3	Point Sources	17
A	Summary	18
A.1	Status	18
A.2	Comments	18

1 Front

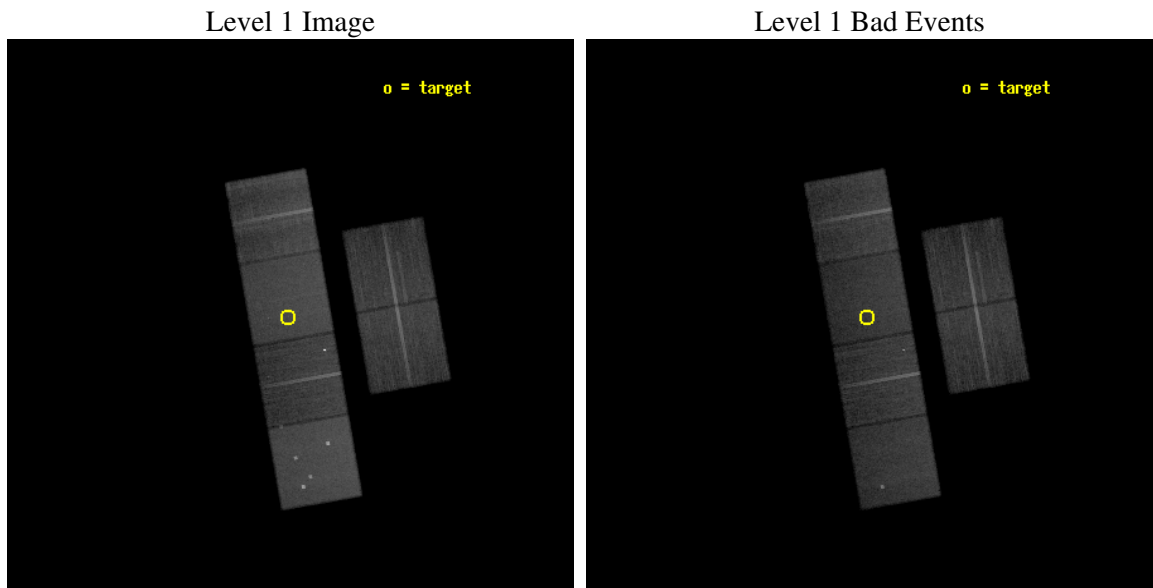
seq_num	300135
obs_id	6167
title	Understanding the nature of supersoft X-ray sources
observer	Dr. Jochen Greiner
object	M31-0046.0+4143
dtcycle	0
cycle	P
ra_targ	11.52375
dec_targ	41.717778
ra_nom	11.519306401176
dec_nom	41.708709782212
roll_nom	260.0195804434
revision	2
ontime	24534.399908602
livetime	24223.730564117
ontime2	24534.399908602
ontime3	24534.399908602
ontime5	24534.399908602
ontime6	24534.399908602
ontime7	24534.399908602
ontime8	24534.399908602
l2events	310127



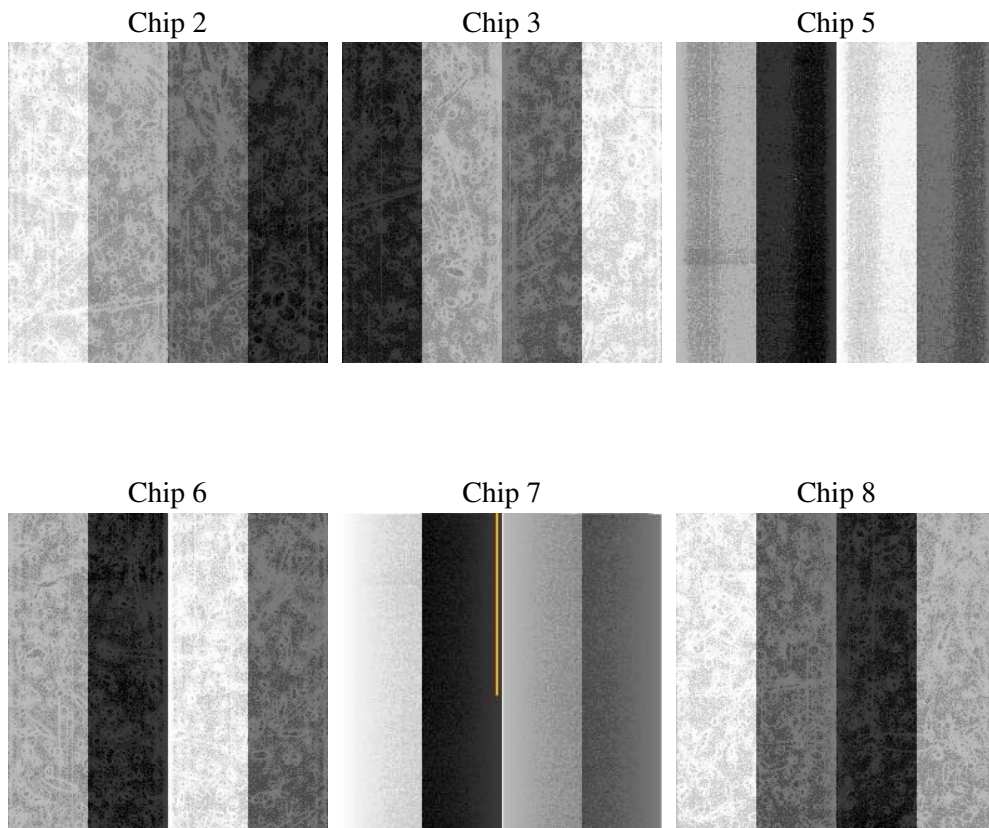
2 OBI

2.1 OBI

2.1.1 Images



2.1.2 Bias



2.1.3 Parameters

obi_num	0
ascdsver	7.6.7.1
caldsver	3.2.1
date	2006-04-10T19:42:04
revision	2

sched_exp_time	24500.000000
ontime	24540.916923076
ontime2	24540.916903138
ontime3	24540.916923076
ontime5	24540.916923076
ontime6	24540.916923076
ontime7	24540.916923076
ontime8	24540.916903138
l1events	1386010

2.1.4 Events

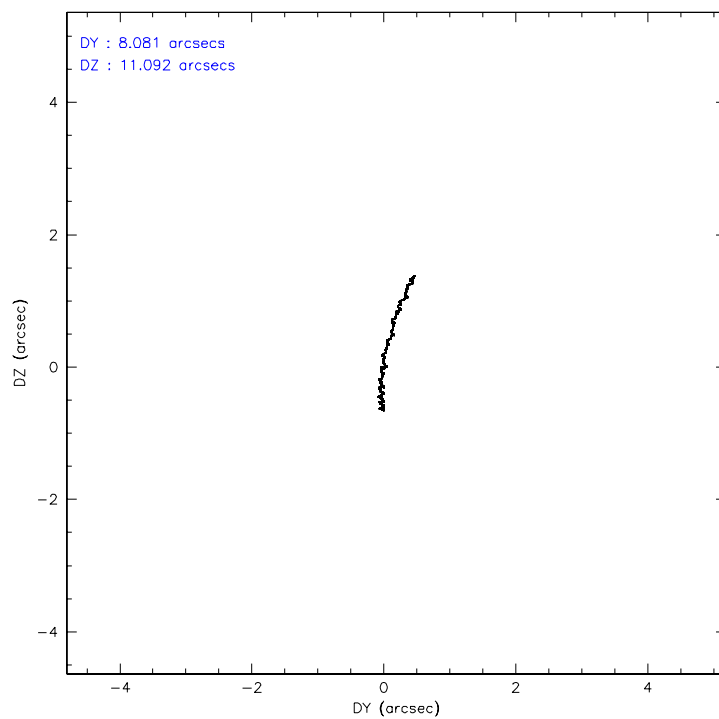
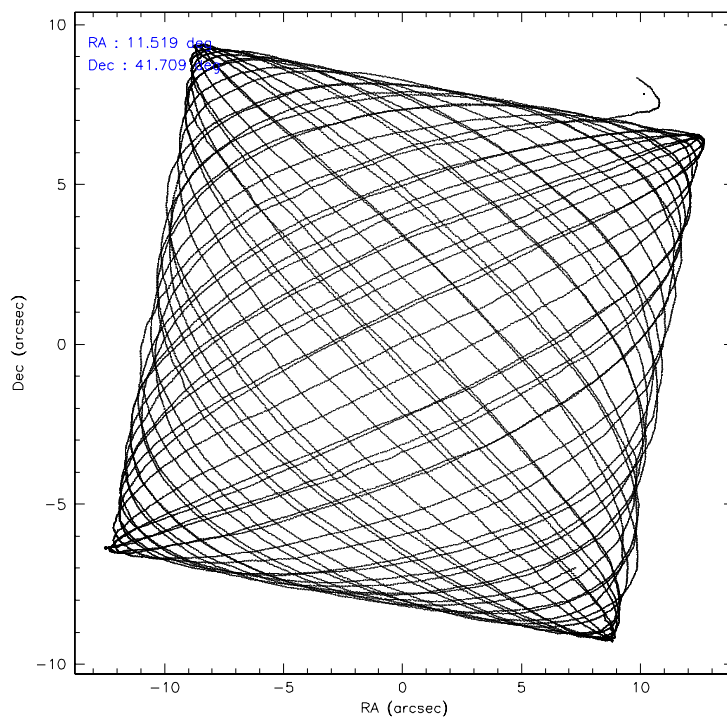
	ccd 2	ccd 3	ccd 5	ccd 6	ccd 7	ccd 8
level 1 events	198358	187350	291805	207633	257382	243482
rejected events	175703	165024	159565	170833	159044	192016
rejected %	88%	88%	54%	82%	61%	78%

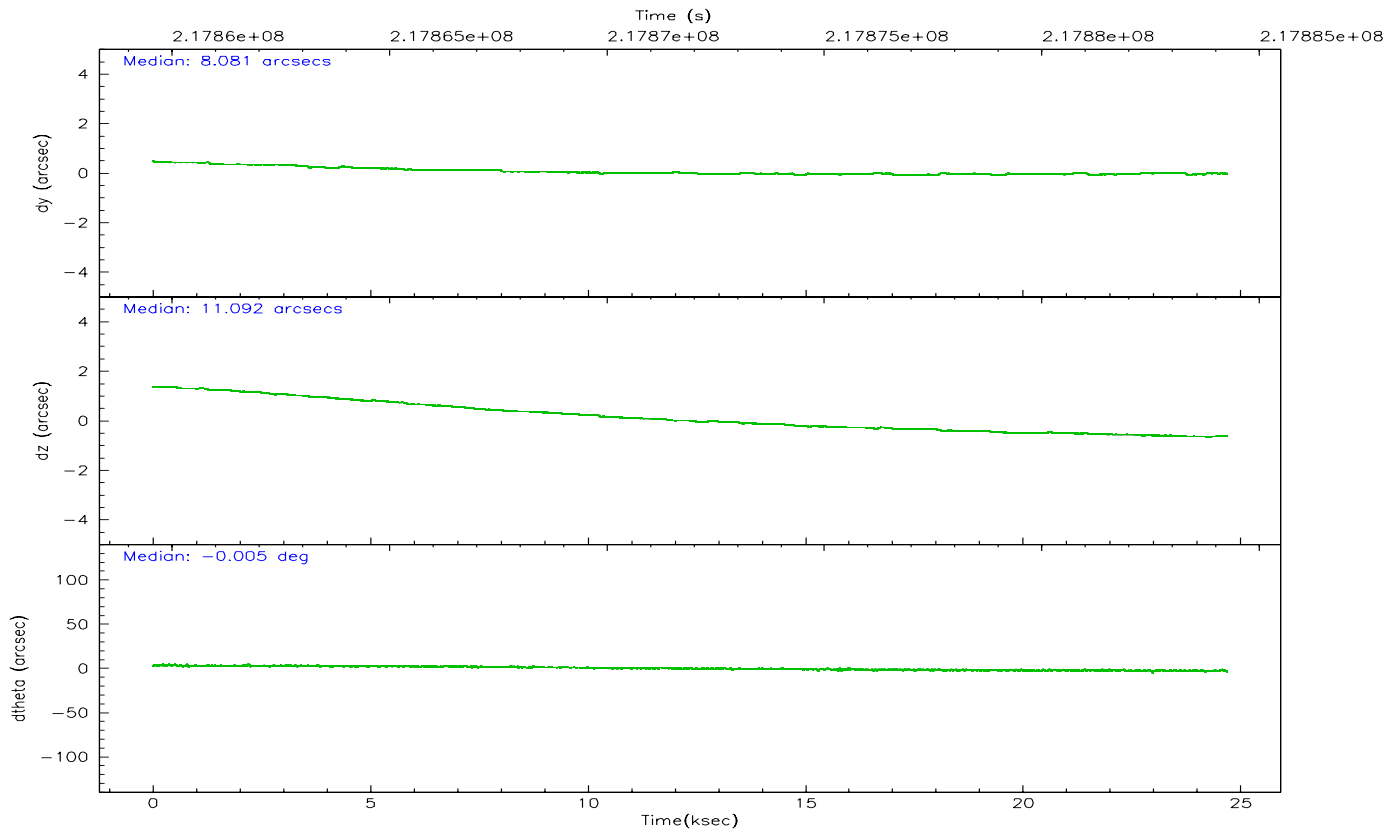
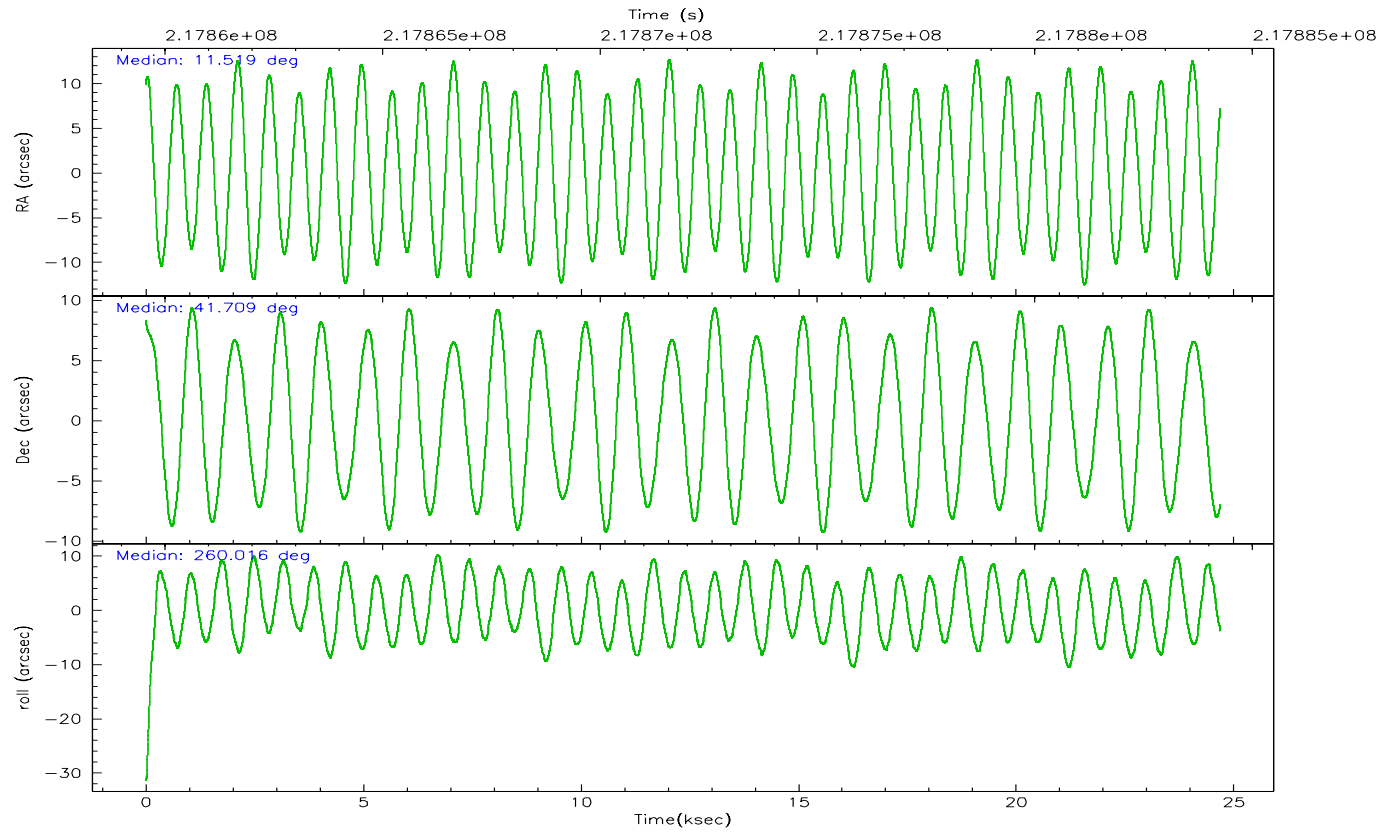
	ccd 2	ccd 3	ccd 5	ccd 6	ccd 7	ccd 8
grade 0 events	10037	9934	14690	19587	5300	16129
	5%	5%	5%	9%	2%	6%
grade 1 events	124	119	251	739	129	162
	0%	0%	0%	0%	0%	0%
grade 2 events	4646	4197	40173	6557	24428	11668
	2%	2%	13%	3%	9%	4%
grade 3 events	2132	2066	2802	2822	4733	5285
	1%	1%	0%	1%	1%	2%
grade 4 events	2059	2156	2509	2721	4728	4962
	1%	1%	0%	1%	1%	2%
grade 5 events	7538	8403	14213	9037	16915	11739
	3%	4%	4%	4%	6%	4%
grade 6 events	3785	3978	72114	5120	59170	13462
	1%	2%	24%	2%	22%	5%
grade 7 events	168037	156497	145053	161050	141979	180075
	84%	83%	49%	77%	55%	73%

2.2 Compared Parameters

Parameter	Planned	Actual	Parameter	Planned	Actual
Instrument	ACIS	ACIS	Obspar format version number	6	6
Detector	ACIS-235678	ACIS-235678	Obspar file type	PREDICTED	ACTUAL
Grating	NONE	NONE	Obspar update status	NONE	UPDATED
Data mode	FAINT	FAINT	On-chip summing requested	N	N
Observation mode	POINTING	POINTING	Subarray requested	NONE	NONE
Pointing RA	11.506348	11.51930640117625	Alternating exposures requested	N	N
Pointing Dec	41.734153	41.70870978221237	Primary exposure time	0.000000	3.2
Pointing Roll	259.871585	260.0195804434026			
SIM focus pos (mm)	-0.684267	-0.6828225247311905			
SIM defocus (mm)	0	0.001444936568705701			
SIM translation stage pos (mm)	-190.132523	-190.1400660498719			
SIM translation stage offset (mm)	0	0.00754346686406393			
Observation start time	217859754.184000	217858609.324			
Observation start date	2004-11-26T12:34:50	2004-11-26T12:16:49			
Observation end time	217884254.184000	217885393.6002			
Observation end date	2004-11-26T19:23:10	2004-11-26T19:43:13			
Read mode	TIMED	TIMED			

2.3 Aspect



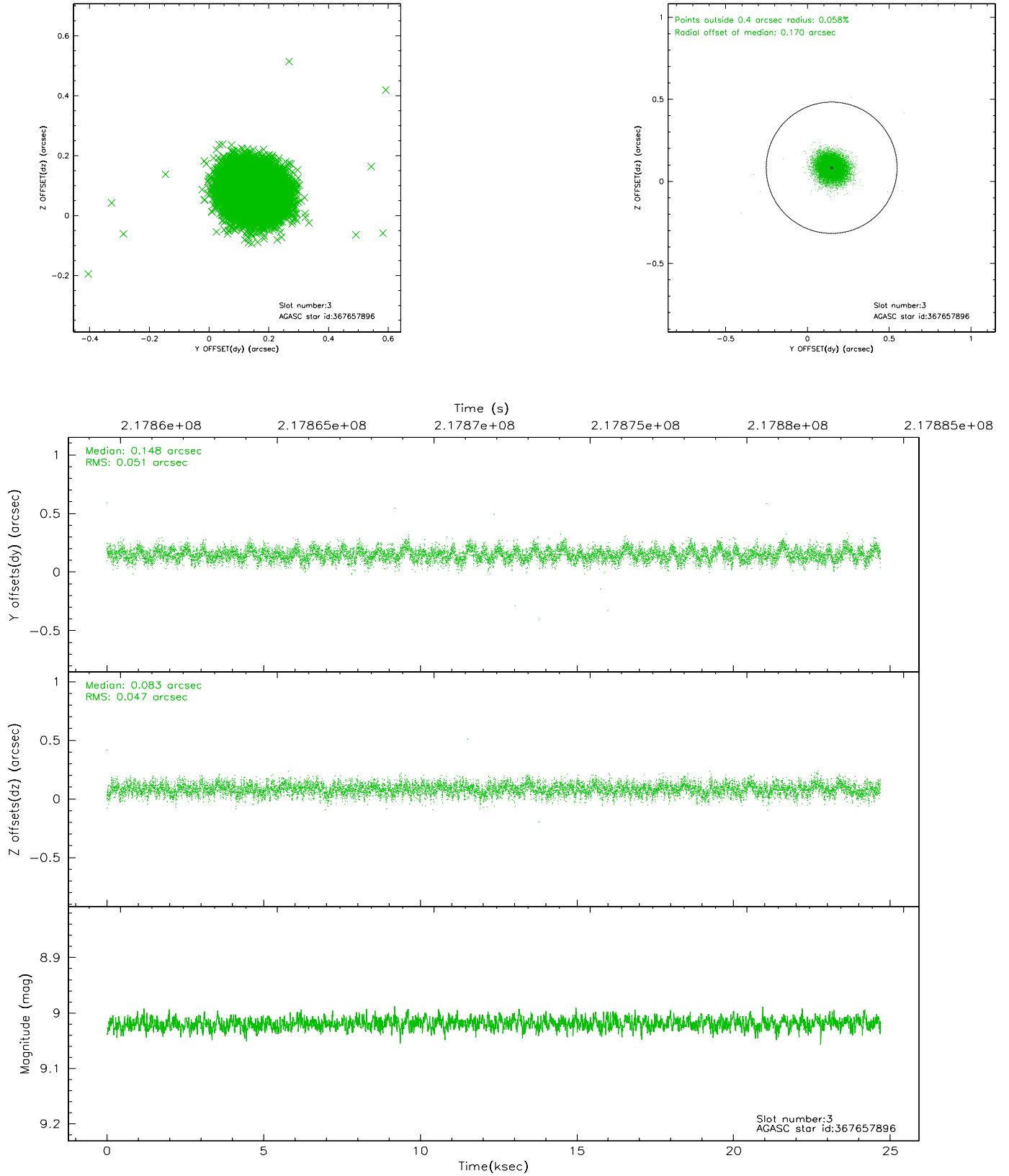


Slot Statistics

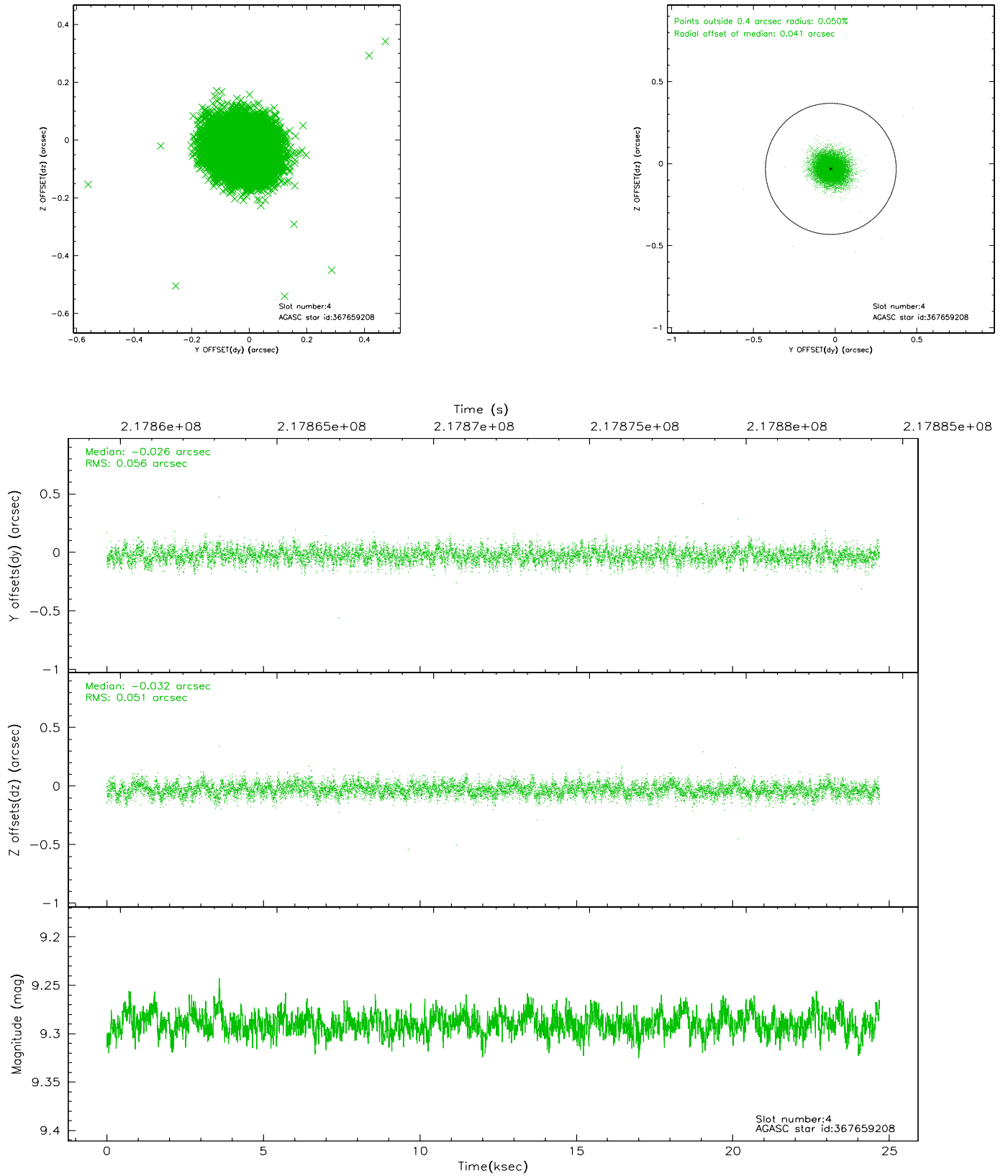
slot	status	id	mag	n_pts	med_dy	med_dz	dr1	dr2	ra	dec	mean_y	mean_z
0	FID	ACIS-S-1	7.19	6021	0.033	-0.049	0.019	0.028	0.000000	0.000000	935.12	-1728.21
1	FID	ACIS-S-5	7.24	6021	-0.057	0.022	0.013	0.031	0.000000	0.000000	-1813.88	169.32
2	FID	ACIS-S-6	7.35	6020	0.000	0.037	0.015	0.036	0.000000	0.000000	400.53	813.40
3	GUIDE	367657896	9.02	12035	0.148	0.083	0.073	0.117	11.197765	41.313576	1636.12	-555.02
4	GUIDE	367659208	9.29	12035	-0.026	-0.032	0.080	0.130	11.848231	42.124331	-1545.00	651.44
5	GUIDE	367663272	9.28	12041	-0.082	-0.031	0.096	0.162	10.656279	41.699429	514.15	-2229.36
6	GUIDE	367670520	9.24	12040	-0.020	0.019	0.088	0.142	11.265516	42.371946	-2148.19	-1034.56
7	GUIDE	367145056	7.41	12040	-0.022	-0.044	0.072	0.109	12.259409	41.132018	1766.07	2390.24

2.4 Star Slots

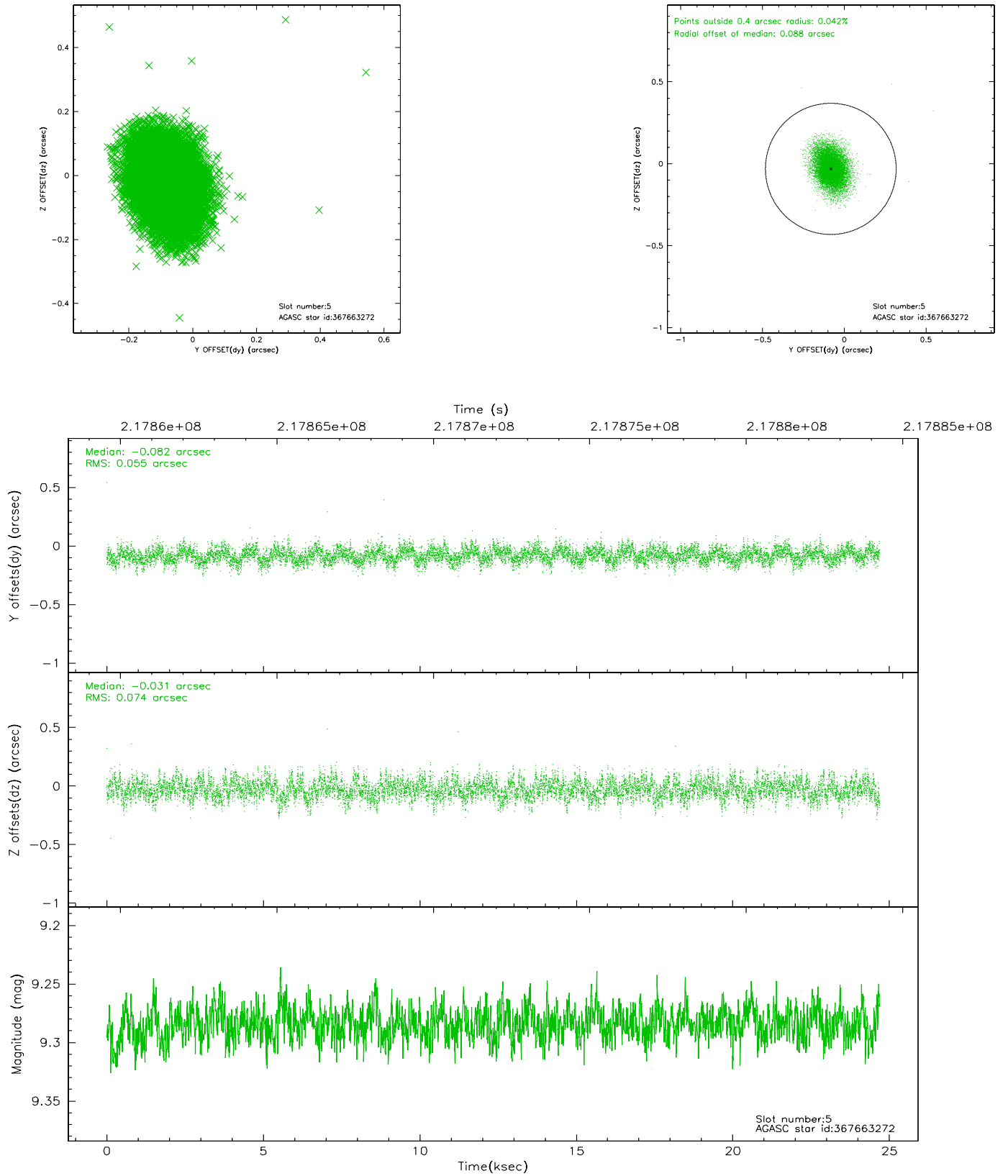
2.4.1 Slot 3



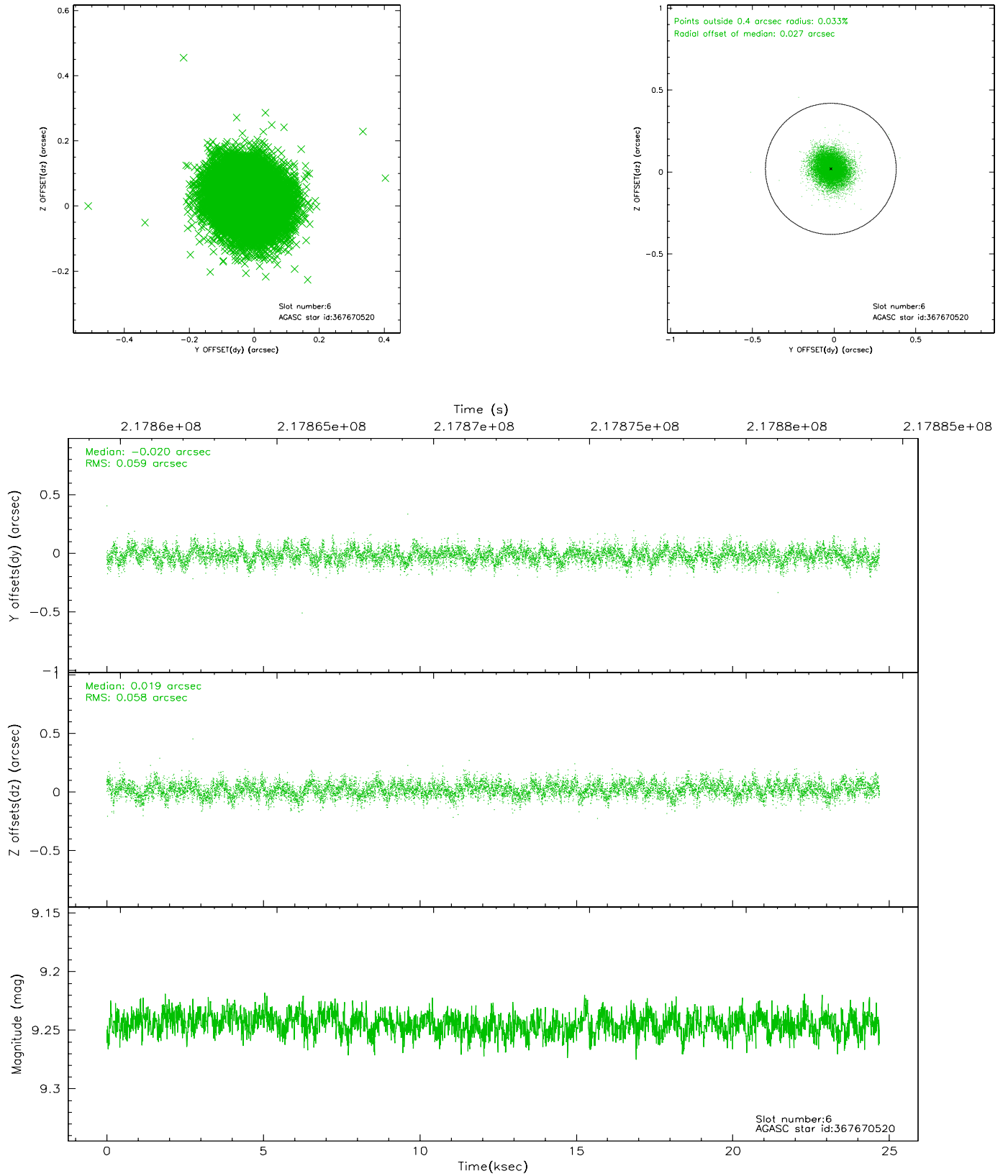
2.4.2 Slot 4



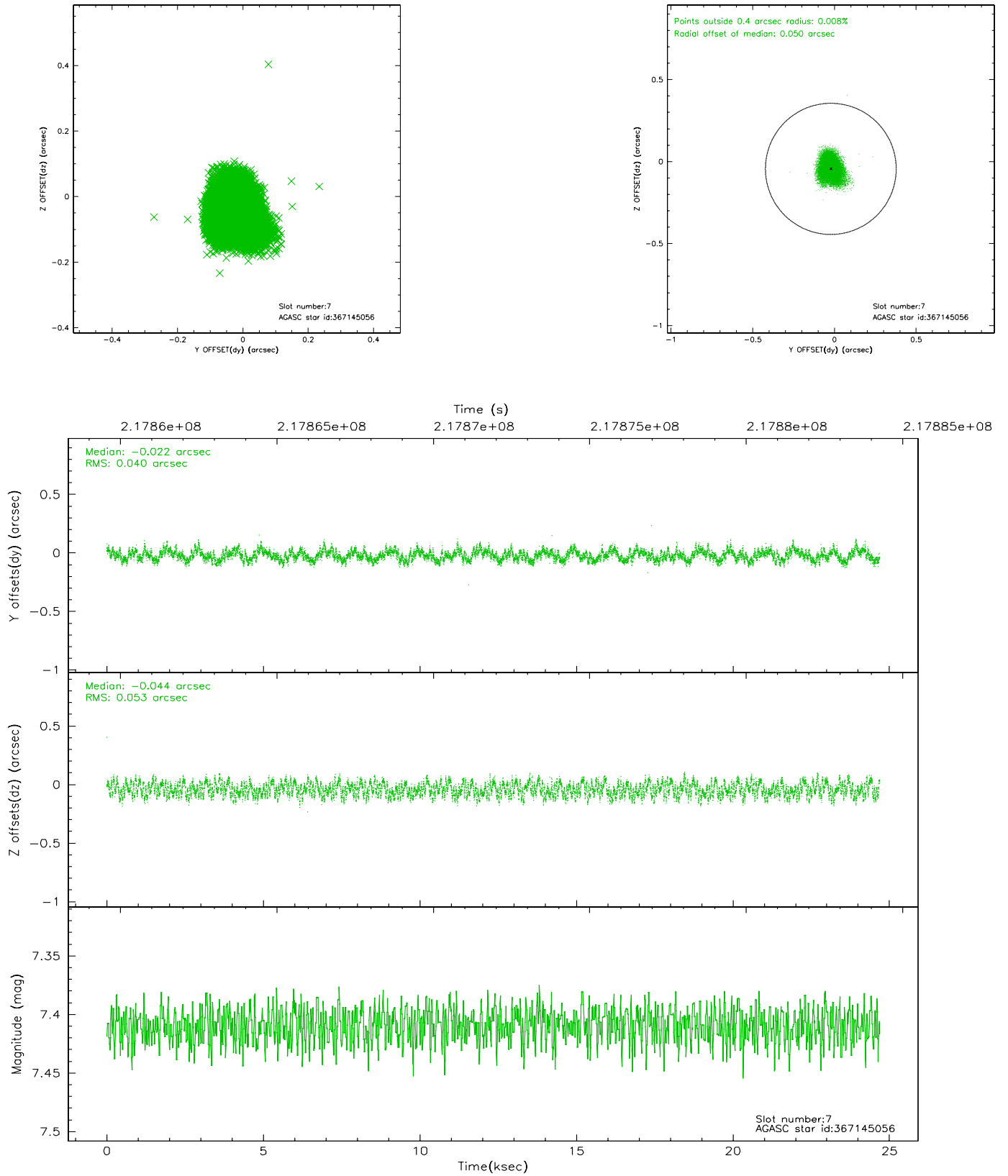
2.4.3 Slot 5



2.4.4 Slot 6

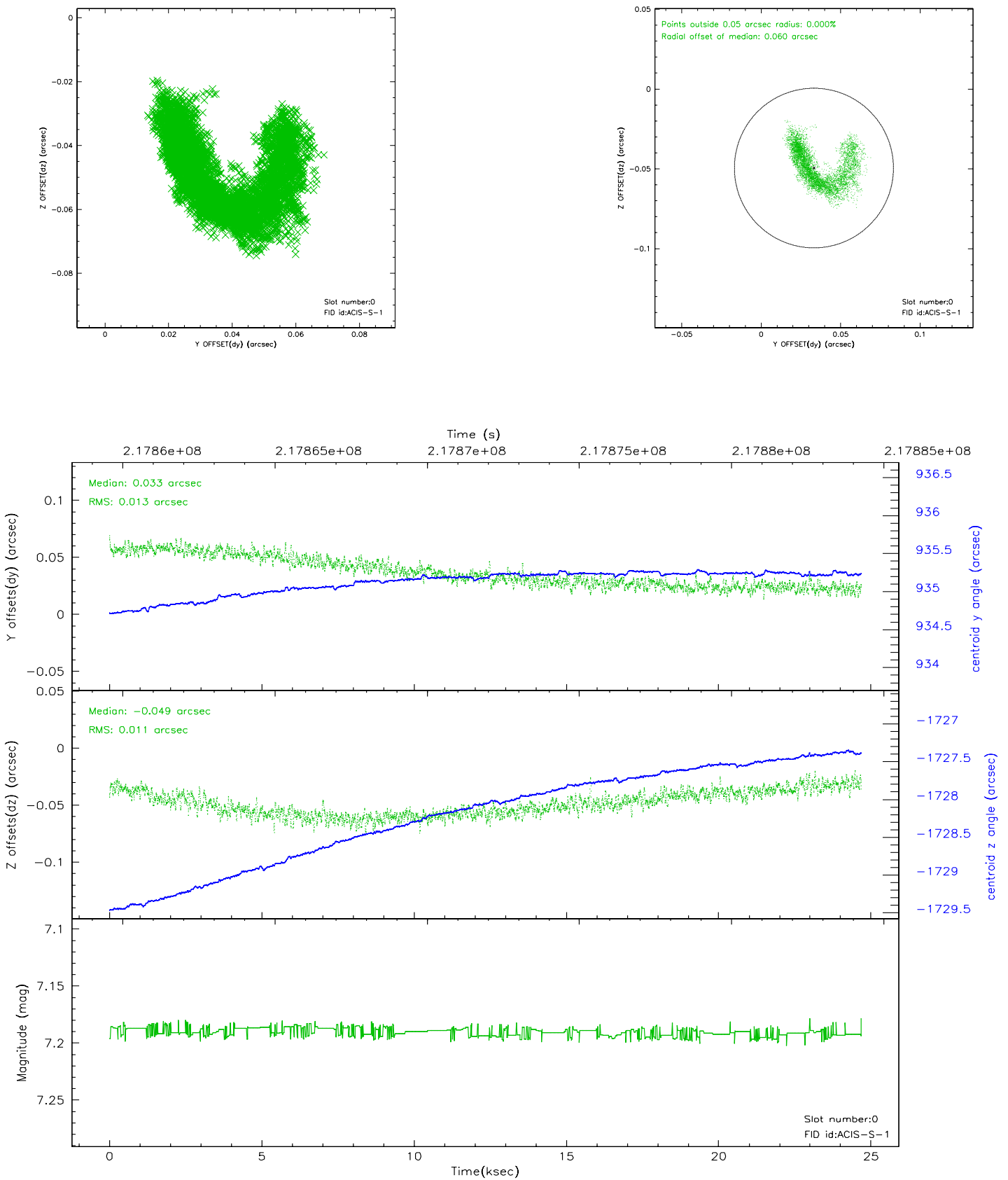


2.4.5 Slot 7

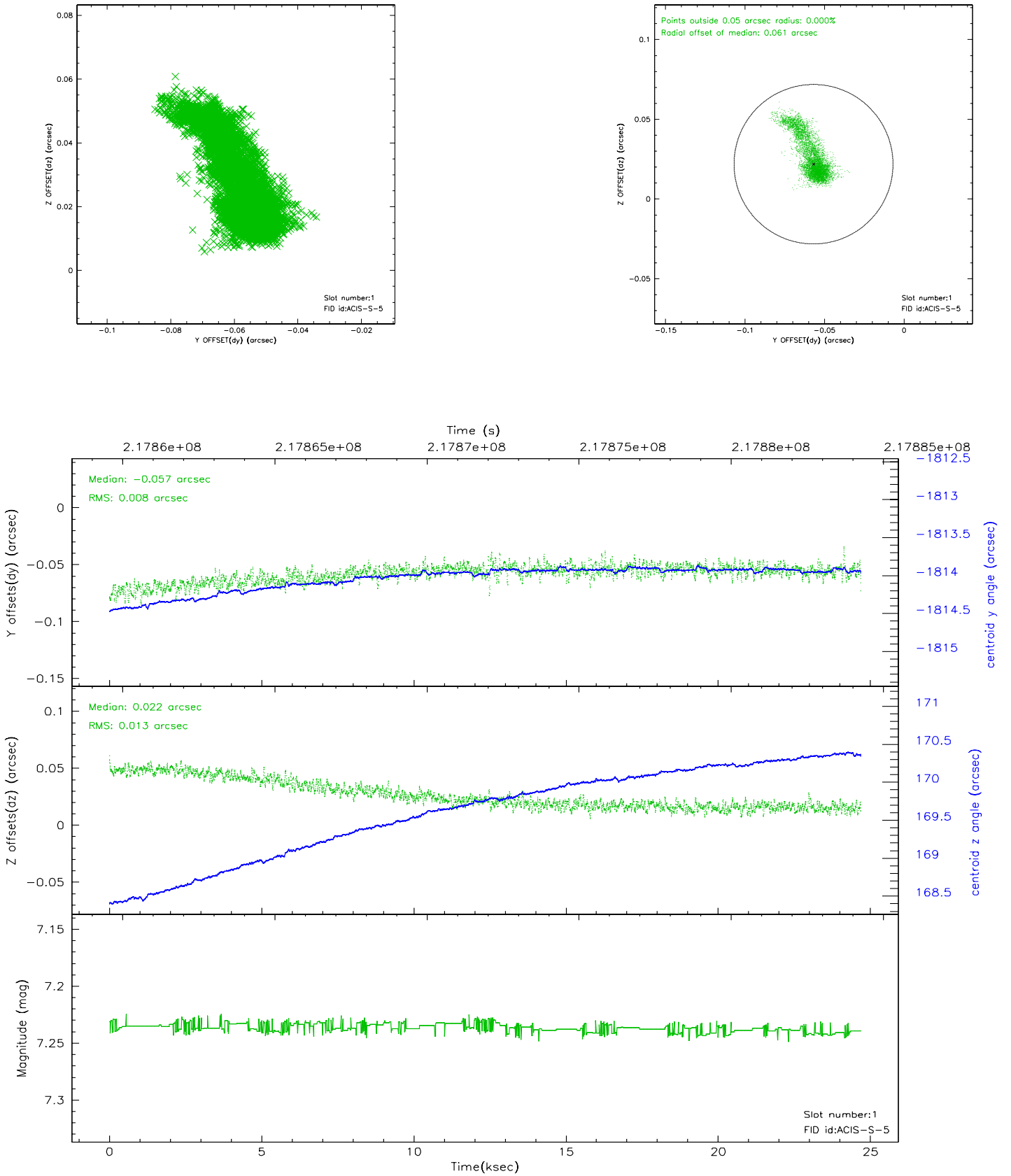


2.5 FID Slots

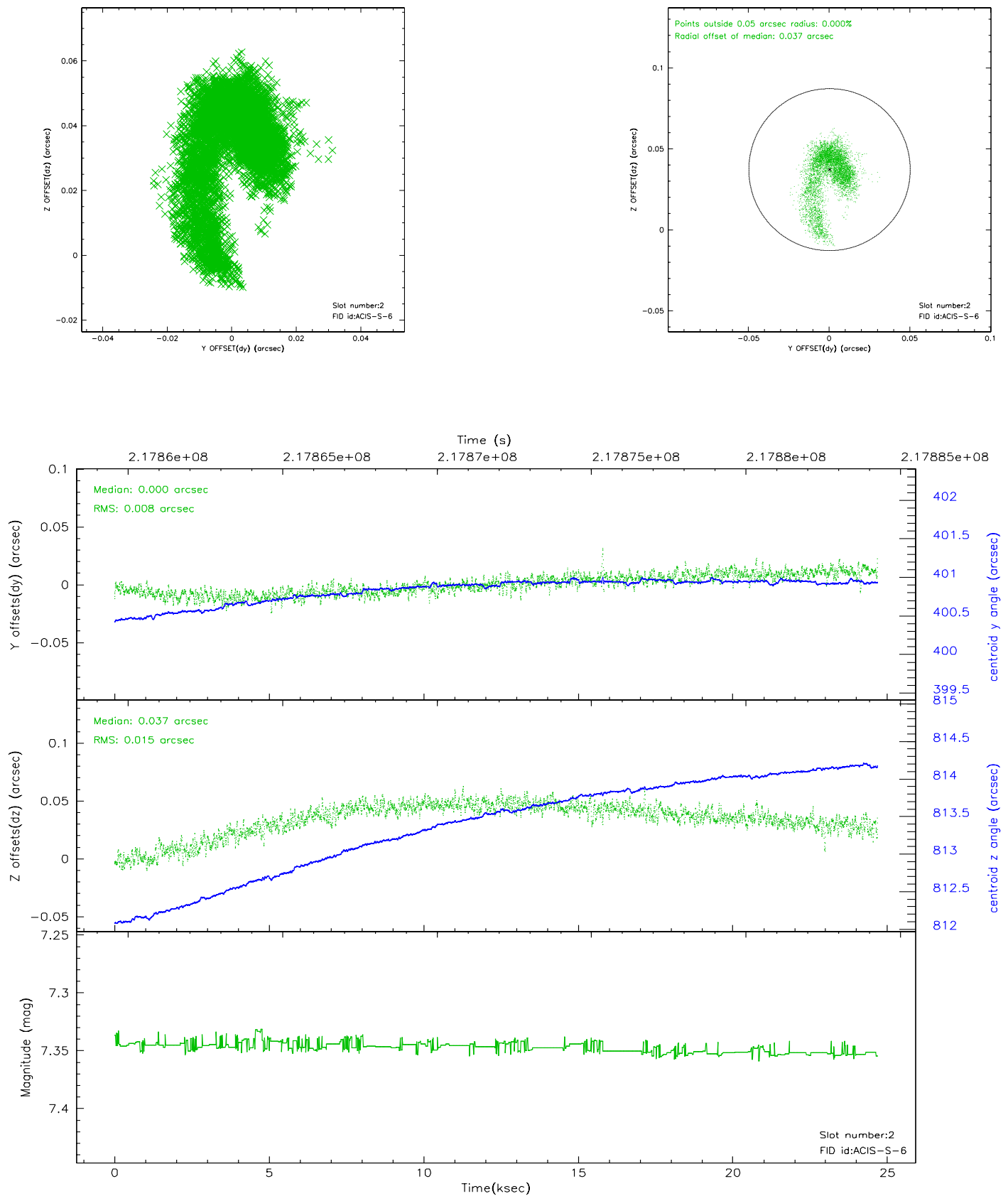
2.5.1 Slot 0



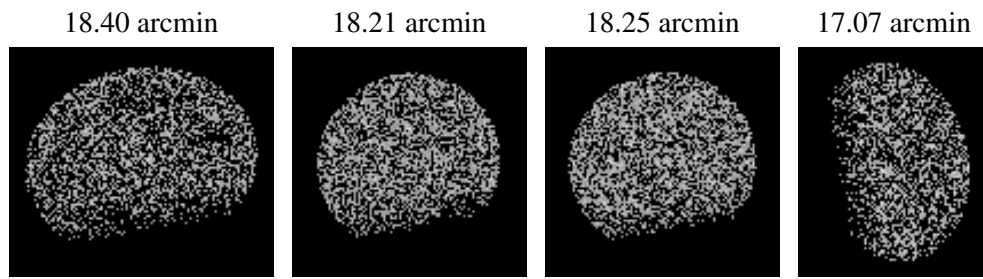
2.5.2 Slot 1



2.5.3 Slot 2



3 Point Sources



A Summary

A.1 Status

V&V Scientist	Doug Morgan
V&V Date (YYYY-MM-DD)	2006.04.10
V&V Edition	1
V&V Disposition and Status	OK
V&V Charge Time	24.53439

A.2 Comments