

# V&V Reference Report

## L2 ASCDS Version : 7.6.8.1

Observation 5282 - L2 Version 002  
Chandra X-Ray Center

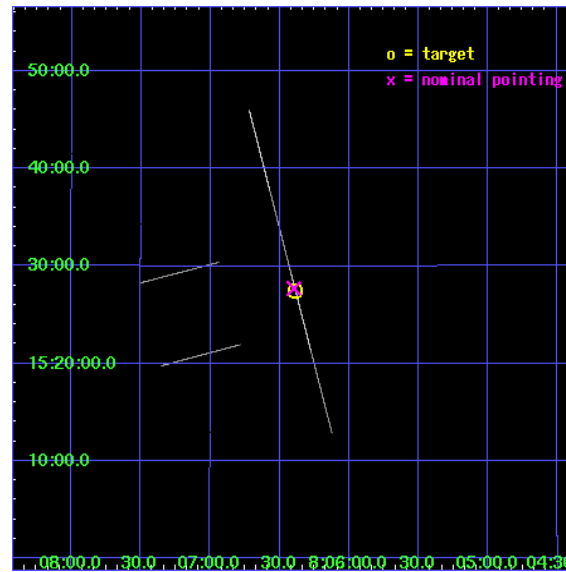
L2 Processing Date : Aug 14 2006

## Contents

<b>1</b>	<b>Front</b>	<b>2</b>
<b>2</b>	<b>OBI</b>	<b>3</b>
2.1	OBI . . . . .	3
2.1.1	Images . . . . .	3
2.1.2	Parameters . . . . .	4
2.1.3	Events . . . . .	4
2.2	Compared Parameters . . . . .	5
2.3	Aspect . . . . .	6
2.4	Star Slots . . . . .	9
2.4.1	Slot 3 . . . . .	9
2.4.2	Slot 4 . . . . .	10
2.4.3	Slot 5 . . . . .	11
2.4.4	Slot 6 . . . . .	12
2.4.5	Slot 7 . . . . .	13
2.5	FID Slots . . . . .	14
2.5.1	Slot 0 . . . . .	14
2.5.2	Slot 1 . . . . .	15
2.5.3	Slot 2 . . . . .	16
<b>A</b>	<b>Summary</b>	<b>17</b>
A.1	Status . . . . .	17
A.2	Comments . . . . .	17

# 1 Front

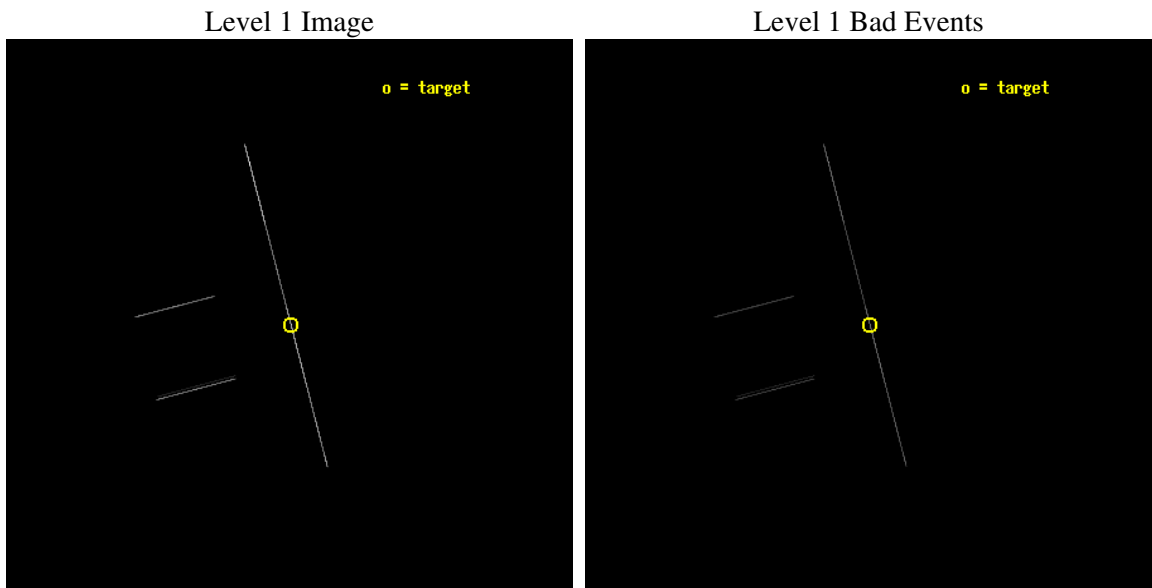
seq_num	300143
obs_id	5282
title	Timing the Orbit of RX J0806.3+1527
observer	Dr. Tod Strohmayer
object	RX J0806.3+1527
ra_targ	121.596667
dec_targ	15.458389
ra_nom	121.59939406577
dec_nom	15.461885832705
roll_nom	75.388337274145
revision	3
ontime	9180.0
livetime	9144.140625
ontime2	9180.0
ontime3	9180.0
ontime5	9180.0
ontime6	9180.0
ontime7	9180.0
ontime8	9180.0
l2events	135239



## 2 OBI

### 2.1 OBI

#### 2.1.1 Images



### 2.1.2 Parameters

obi_num	0
ascdsver	7.6.8.1
caldsver	3.2.3
date	2006-08-14T20:56:11
revision	3

sched_exp_time	9000.000000
ontime	9829.1198512912
ontime2	9830.5210520029
ontime3	9830.5690996945
ontime5	9829.1202496588
ontime6	9830.5792346001
ontime7	9829.1198512912
ontime8	9830.5788344145
l1events	217915

### 2.1.3 Events

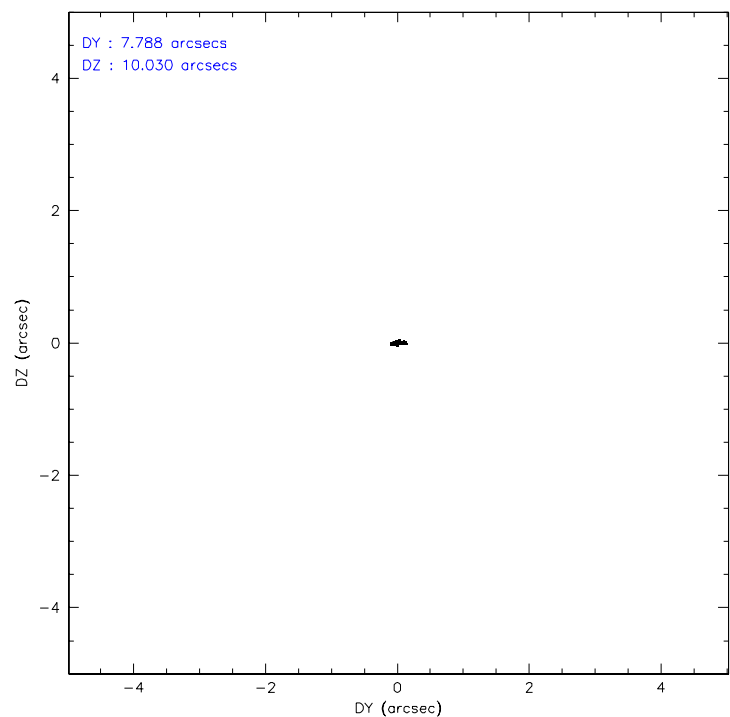
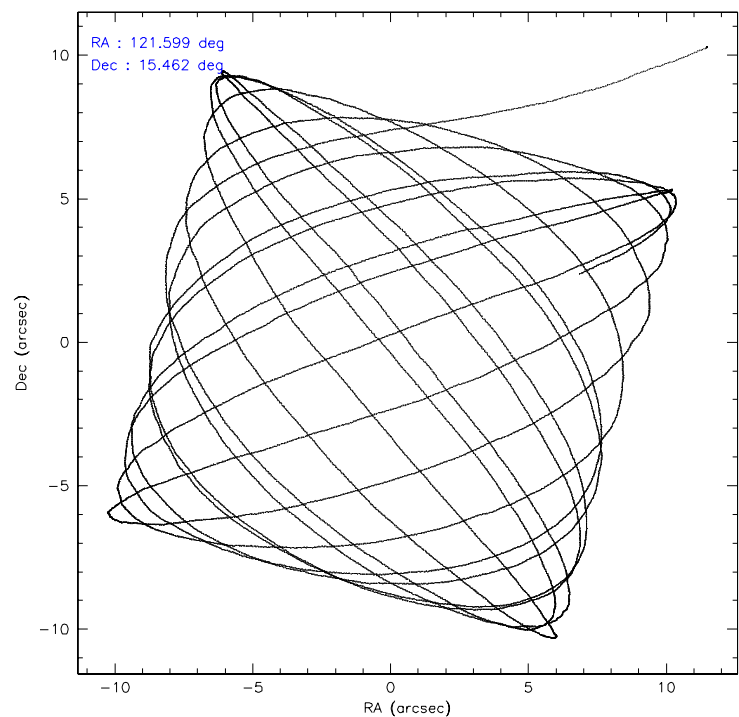
	ccd 2	ccd 3	ccd 5	ccd 6	ccd 7	ccd 8
level 1 events	14638	16266	86499	16208	53385	30919
rejected events	3316	3795	10345	4051	9785	6113
rejected %	22%	23%	11%	24%	18%	19%

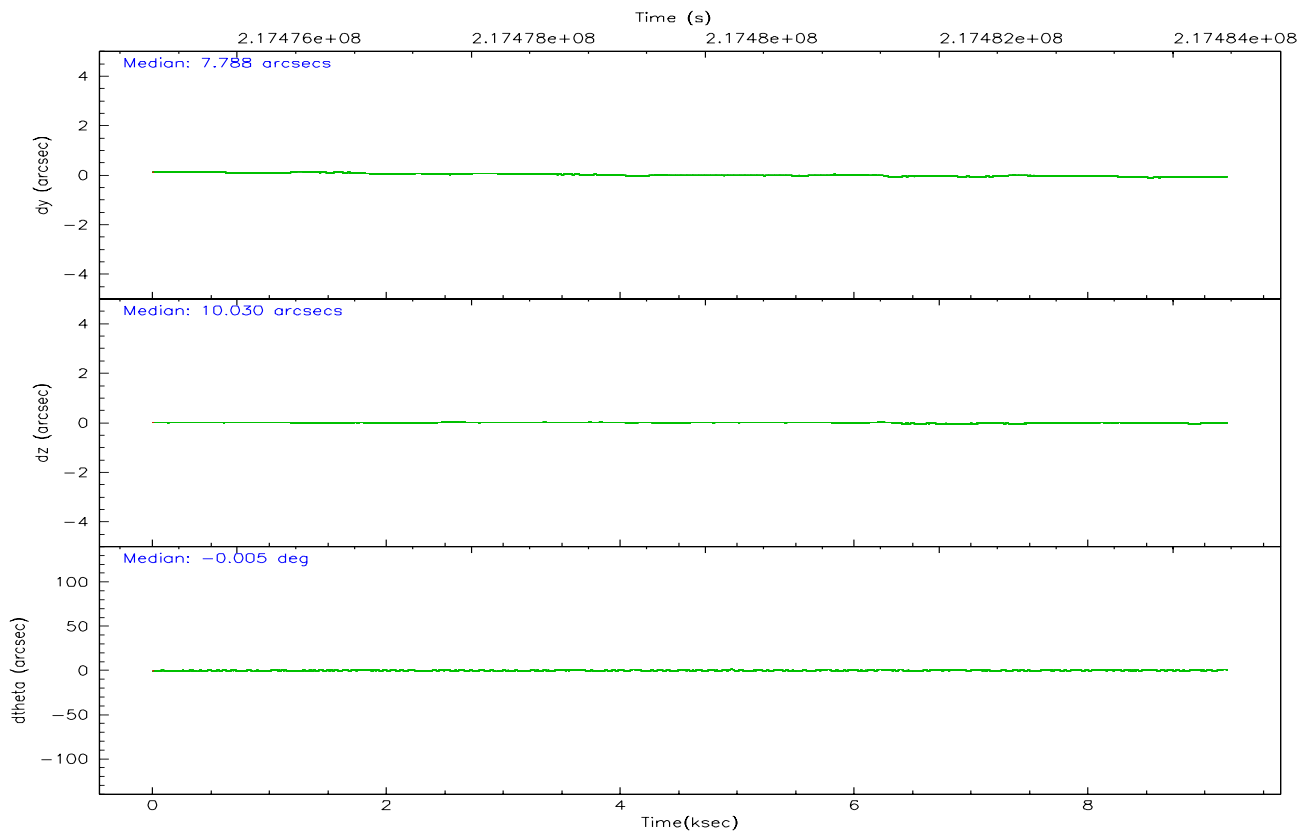
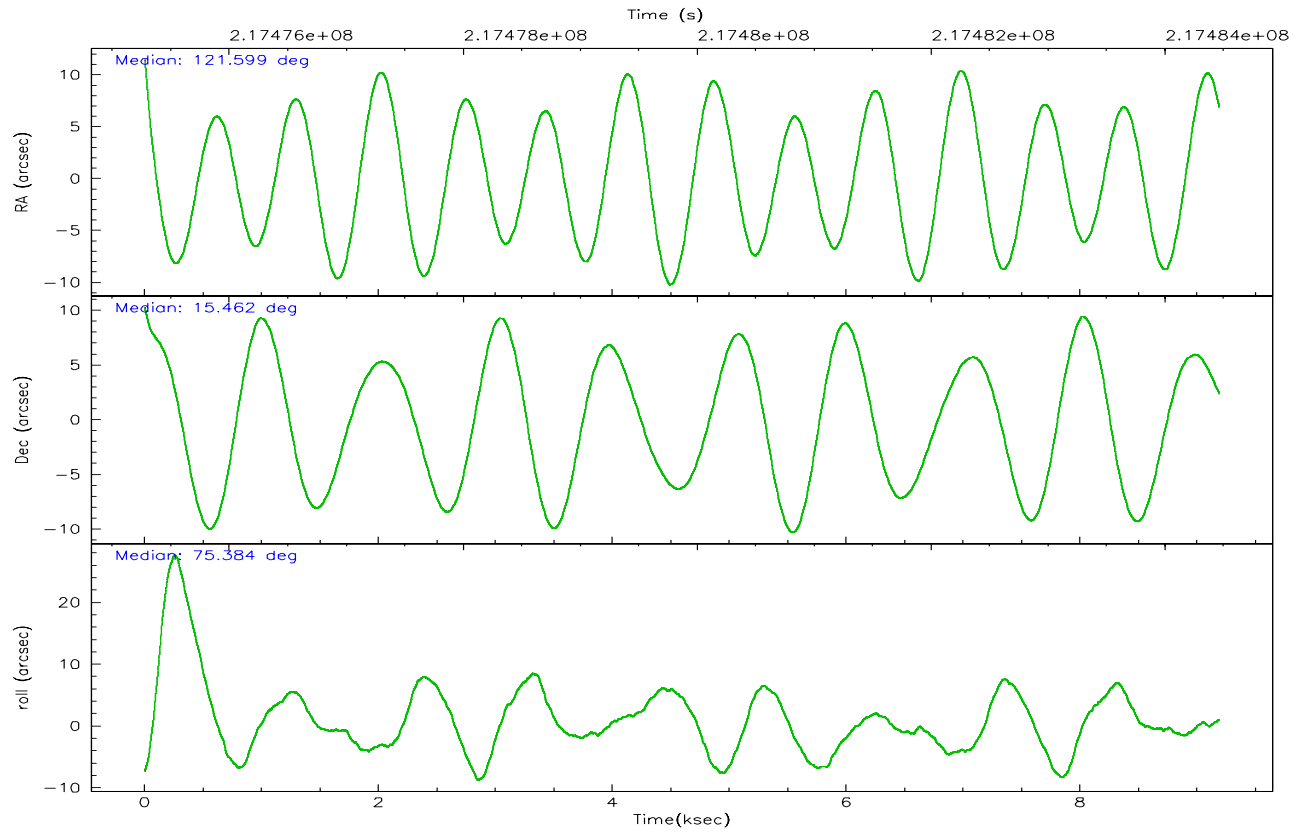
	ccd 2	ccd 3	ccd 5	ccd 6	ccd 7	ccd 8
grade 0 events	1471	1571	21736	1472	3735	4687
	10%	9%	25%	9%	6%	15%
grade 1 events	48	49	90	55	65	117
	0%	0%	0%	0%	0%	0%
grade 2 events	4789	5271	21539	4963	11868	8721
	32%	32%	24%	30%	22%	28%
grade 3 events	1539	1778	1240	1652	1835	2936
	10%	10%	1%	10%	3%	9%
grade 4 events	1575	1500	1176	1538	1714	2901
	10%	9%	1%	9%	3%	9%
grade 5 events	2523	2993	5969	3137	6936	4047
	17%	18%	6%	19%	12%	13%
grade 6 events	2693	3104	34749	3391	27232	7510
	18%	19%	40%	20%	51%	24%
grade 7 events	0	0	0	0	0	0
	0%	0%	0%	0%	0%	0%

## 2.2 Compared Parameters

Parameter	Planned	Actual	Parameter	Planned	Actual
Instrument	ACIS	ACIS	Obspar format version number	6	6
Detector	ACIS-235678	ACIS-235678	Obspar file type	PREDICTED	ACTUAL
Grating	NONE	NONE	Obspar update status	NONE	UPDATED
Data mode	CC33_GRADED	CC33_GRADED	On-chip summing requested	N	N
Observation mode	POINTING	POINTING	Subarray requested	NONE	NONE
Pointing RA	121.607272	121.5993940657705	Alternating exposures requested	N	N
Pointing Dec	15.435700	15.46188583270461	Primary exposure time	0.000000	0
Pointing Roll	75.229621	75.38833727414492			
SIM focus pos (mm)	-0.684267	-0.6828225247311905			
SIM defocus (mm)	0	0.001444936568705701			
SIM translation stage pos (mm)	-190.132523	-190.1425803651734			
SIM translation stage offset (mm)	0	0.01005778216563158			
Observation start time	217475471.184000	217474642.25675			
Observation start date	2004-11-22T01:50:07	2004-11-22T01:37:22			
Observation end time	217484471.184000	217485159.78222			
Observation end date	2004-11-22T04:20:07	2004-11-22T04:32:39			
Read mode	CONTINUOUS	CONTINUOUS			

## 2.3 Aspect





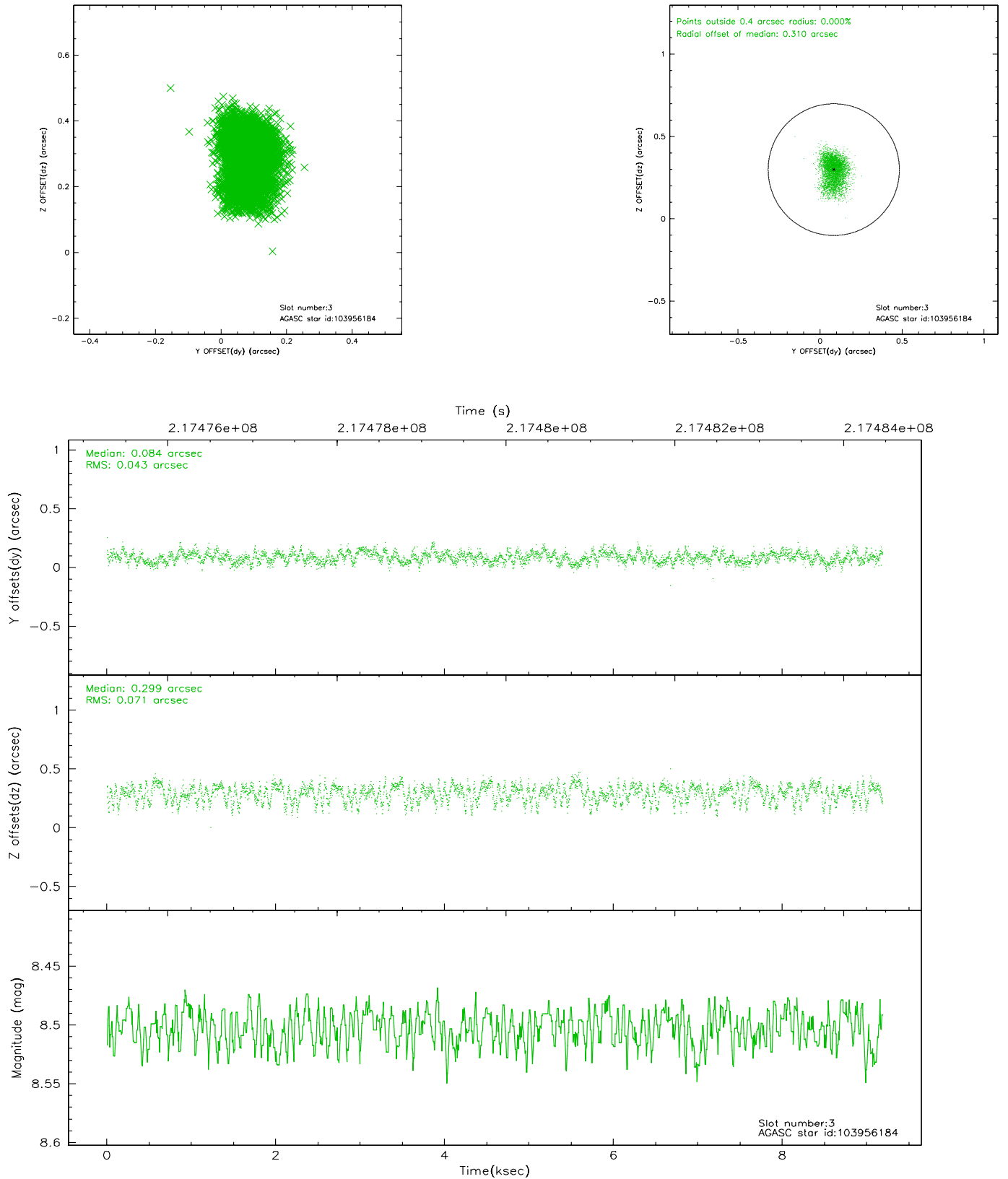
### Slot Statistics

slot	status	id	mag	n_pts	med_dy	med_dz	dr1	dr2	ra	dec	mean_y	mean_z
0	FID	ACIS-S-2	7.10	2241	-0.028	0.003	0.006	0.010	0.000000	0.000000	-760.56	-1731.24
1	FID	ACIS-S-4	7.21	2240	0.056	0.013	0.005	0.009	0.000000	0.000000	2152.49	176.71
2	FID	ACIS-S-5	7.23	2241	-0.059	-0.007	0.007	0.012	0.000000	0.000000	-1812.72	170.94
3	GUIDE	103956184	8.50	4481	0.084	0.299	0.087	0.147	122.093586	14.853591	-1592.93	-2169.99
4	GUIDE	180359160	9.59	4479	-0.247	0.132	0.102	0.167	121.837257	16.020694	2239.15	-232.78
5	GUIDE	180370112	8.38	4481	0.065	-0.085	0.072	0.117	121.144488	15.364256	-657.48	1488.48
6	GUIDE	180372496	7.93	4482	0.083	0.072	0.067	0.103	121.745221	15.155380	-853.50	-720.63
7	GUIDE	180367416	9.13	4478	0.020	-0.408	0.107	0.172	120.920648	15.525818	-290.12	2385.94

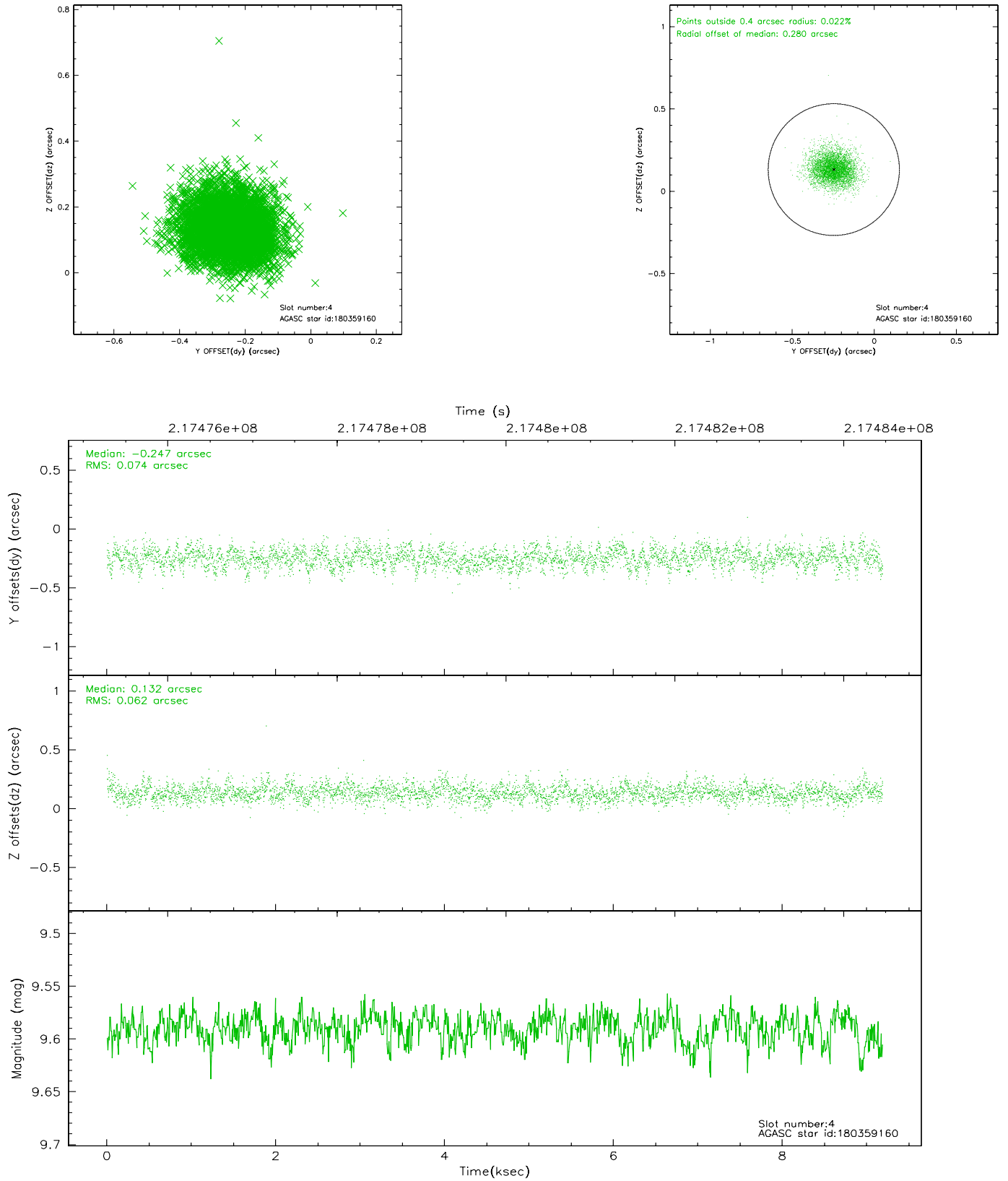


## 2.4 Star Slots

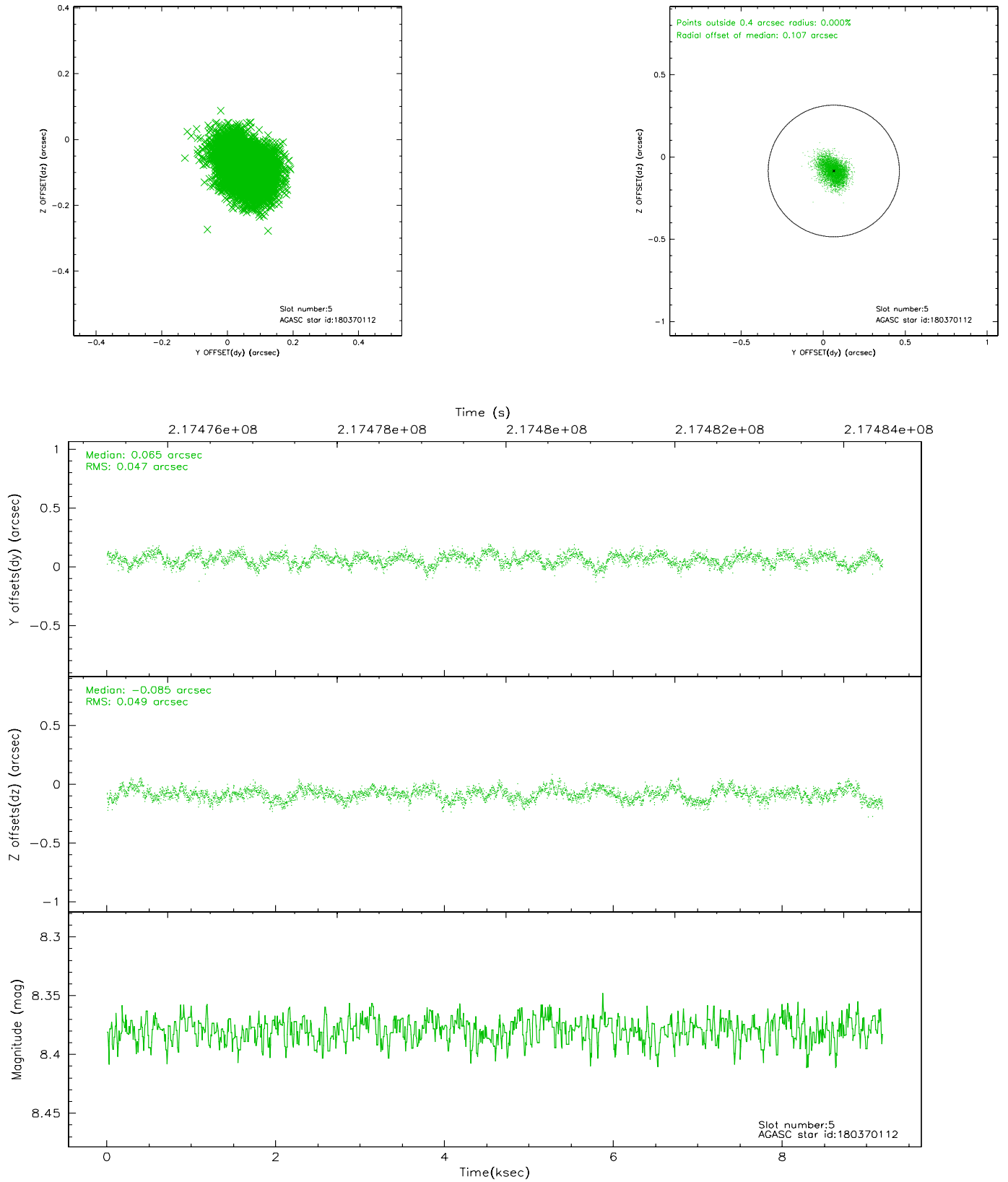
### 2.4.1 Slot 3



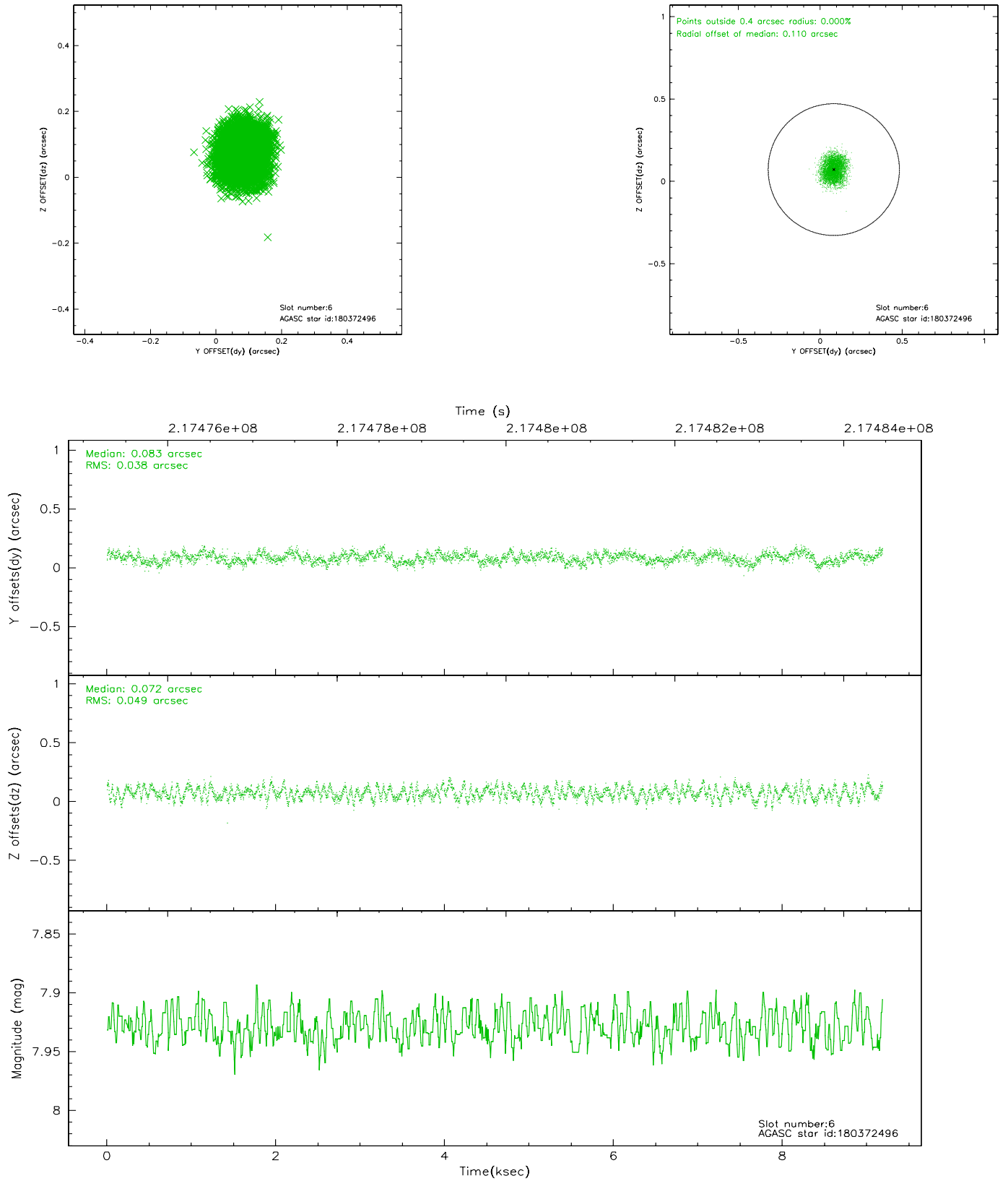
## 2.4.2 Slot 4



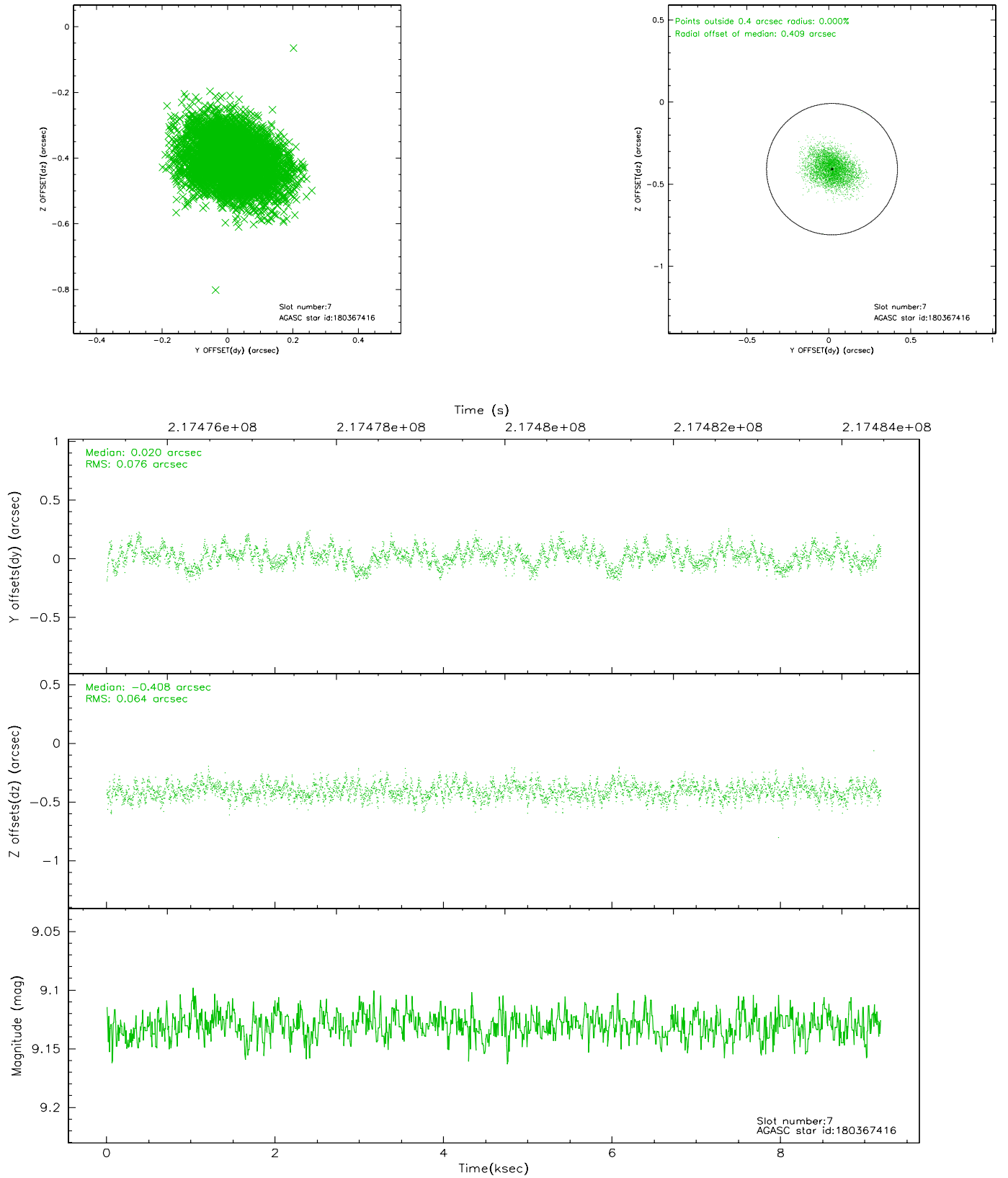
### 2.4.3 Slot 5



## 2.4.4 Slot 6

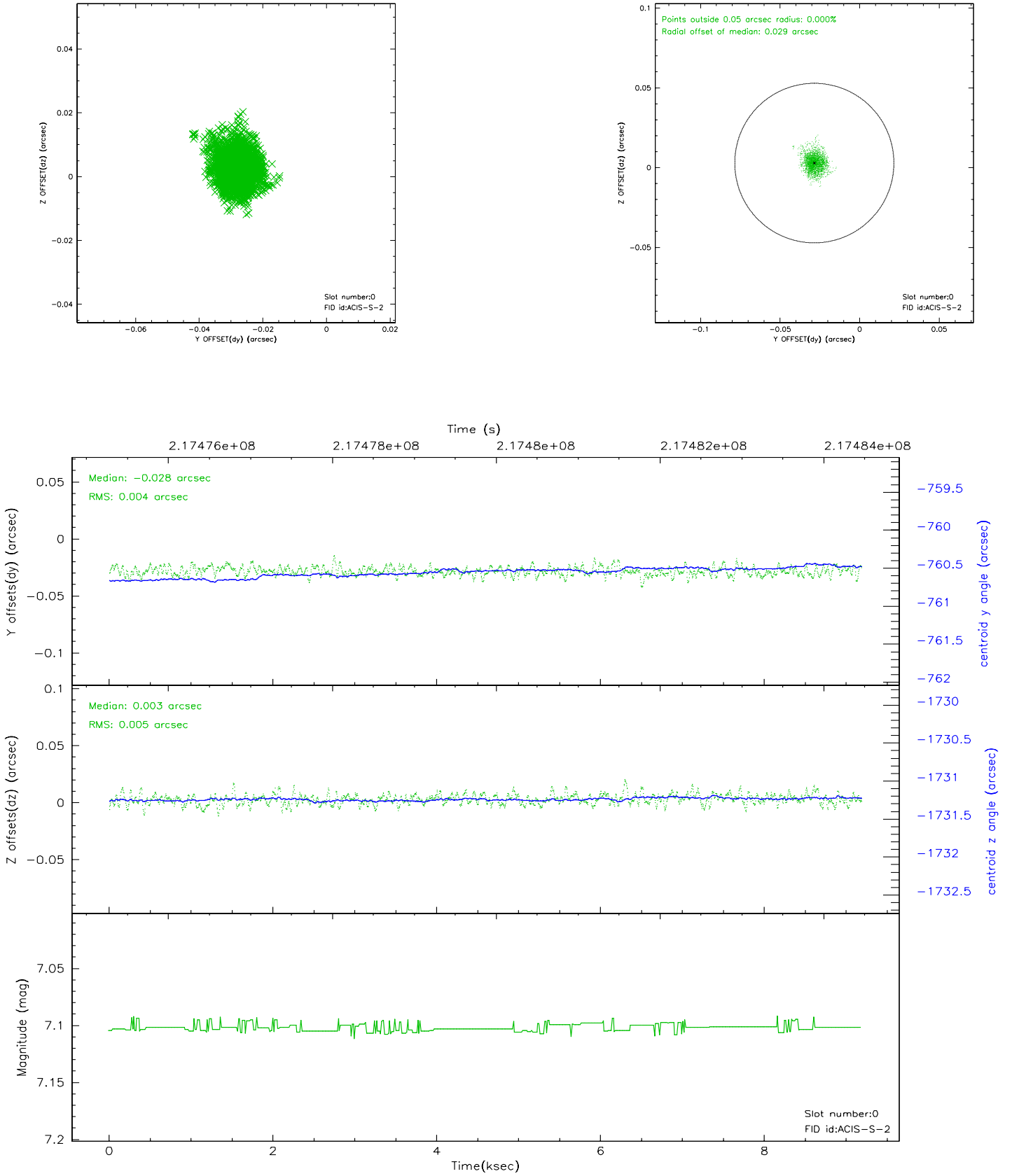


## 2.4.5 Slot 7

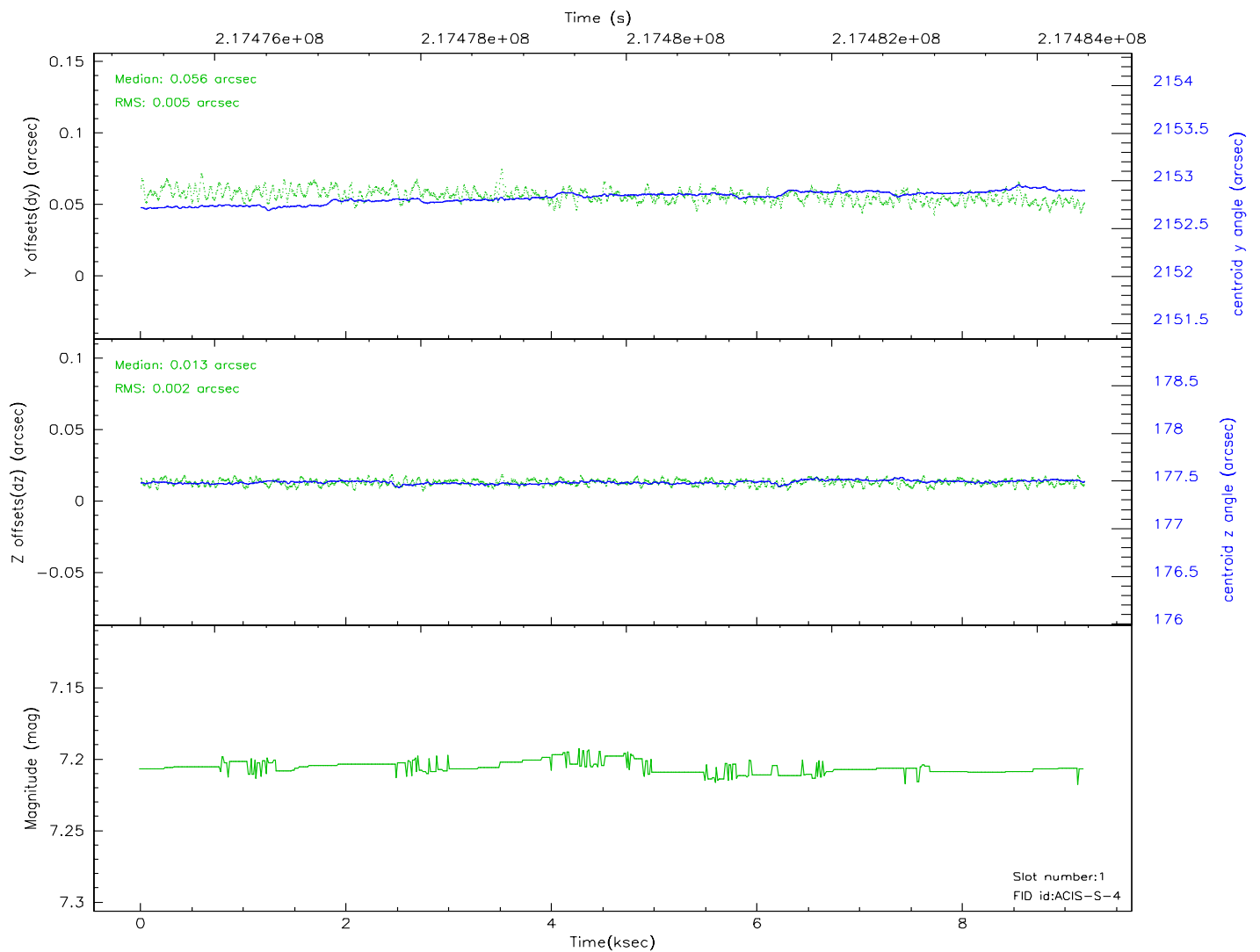
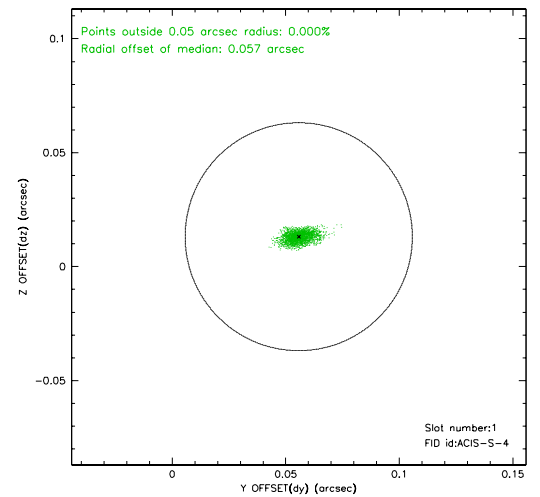
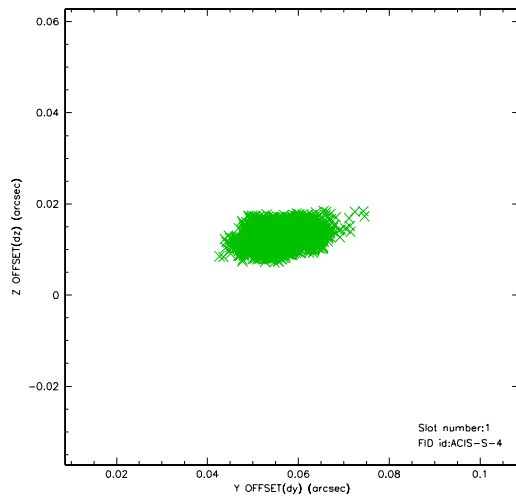


## 2.5 FID Slots

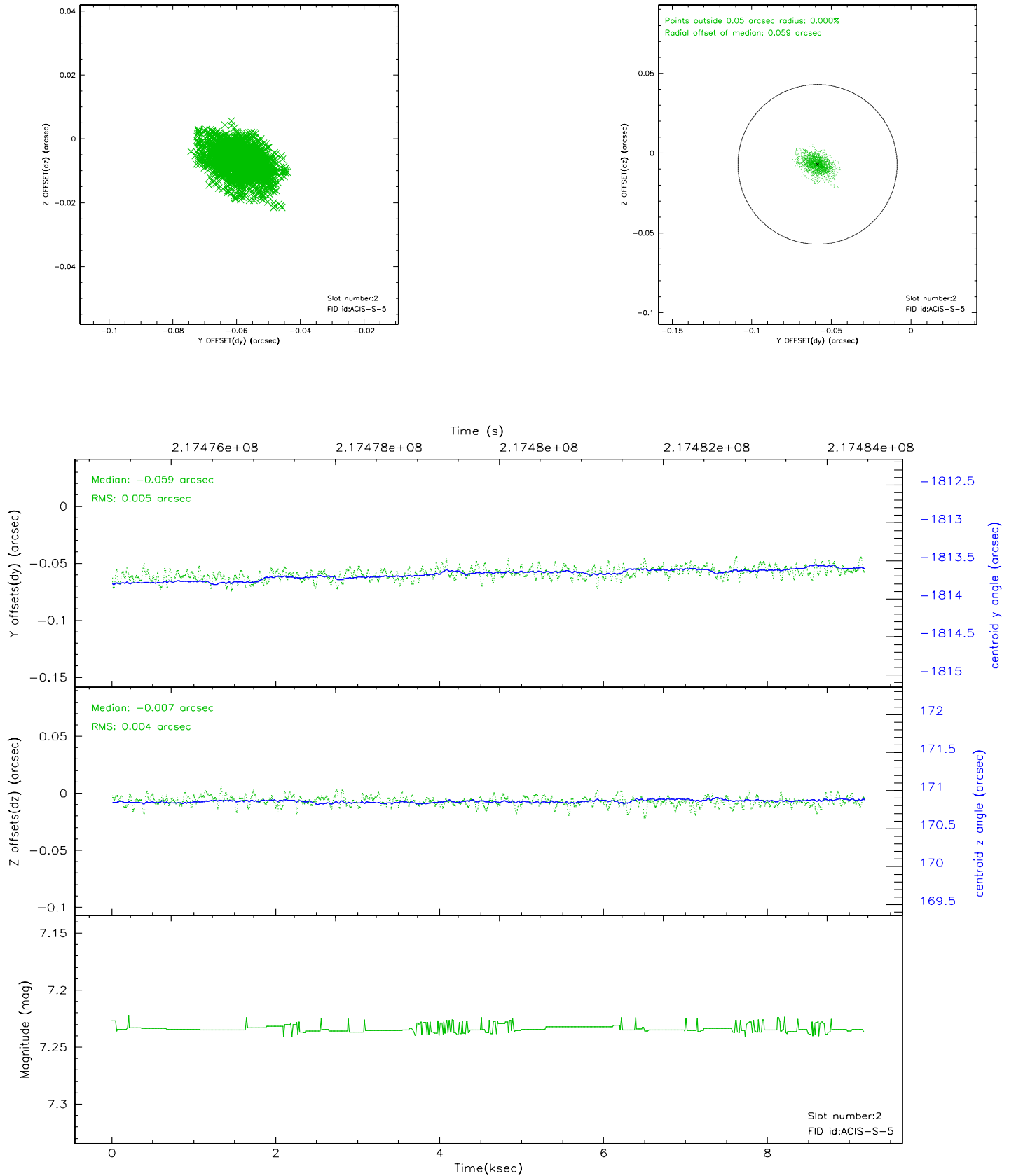
### 2.5.1 Slot 0



## 2.5.2 Slot 1



### 2.5.3 Slot 2





## A Summary

### A.1 Status

V&V Scientist	Beth Sundheim
V&V Date (YYYY-MM-DD)	2006.08.21
V&V Edition	1
V&V Disposition and Status	OK
V&V Charge Time	9.183

### A.2 Comments