

# V&V Reference Report

## L2 ASCDS Version : 8.5.1

Observation 4544 - L2 Version 3  
Chandra X-Ray Center

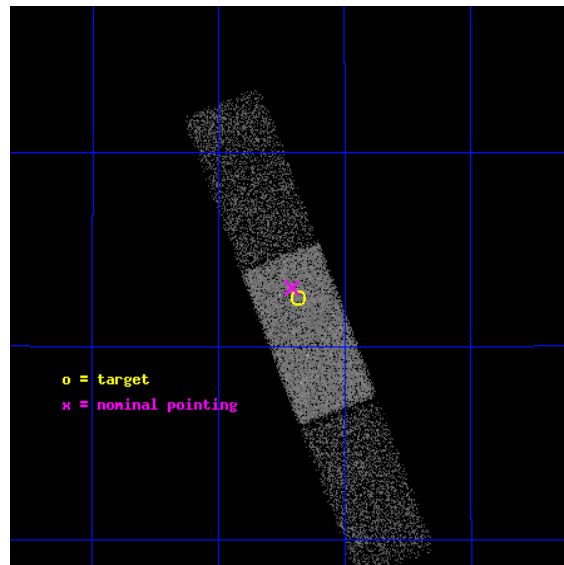
L2 Processing Date : Dec 16 2012

## Contents

<b>1</b>	<b>Front</b>	<b>2</b>
<b>2</b>	<b>OBI</b>	<b>3</b>
2.1	OBI . . . . .	3
2.1.1	Images . . . . .	3
2.1.2	Bias . . . . .	3
2.1.3	Parameters . . . . .	4
2.1.4	Events . . . . .	4
2.2	Compared Parameters . . . . .	5
2.3	Aspect . . . . .	6
2.4	Star Slots . . . . .	9
2.4.1	Slot 3 . . . . .	9
2.4.2	Slot 4 . . . . .	10
2.4.3	Slot 5 . . . . .	11
2.4.4	Slot 6 . . . . .	12
2.4.5	Slot 7 . . . . .	13
2.5	FID Slots . . . . .	14
2.5.1	Slot 0 . . . . .	14
2.5.2	Slot 1 . . . . .	15
2.5.3	Slot 2 . . . . .	16
<b>A</b>	<b>Summary</b>	<b>17</b>
A.1	Status . . . . .	17
A.2	Comments . . . . .	17

# 1 Front

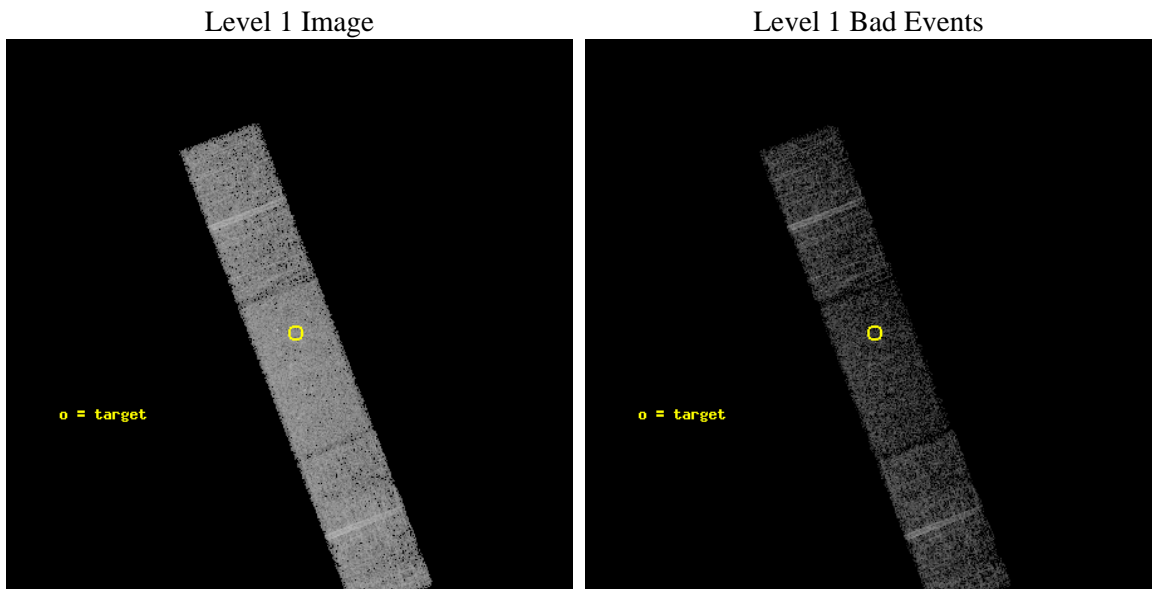
seq_num	300138	Sequence number
obs_id	4544	Observation id
title	The Supersoft Source 1E1339.8+2837 and Globular Cluster M3	Proposa
observer	Professor Johnathan Grindlay	Principal investigator
object	M3	Source name
dtcycle	0	&#160
cycle	P	events from which exps? Prim/Second/Both
ra_targ	205.546667	Observer's specified target RA [deg]
dec_targ	28.375556	Observer's specified target Dec [deg]
ra_nom	205.55235629604	Nominal RA [deg]
dec_nom	28.383873490168	Nominal Dec [deg]
roll_nom	69.017113311518	Nominal Roll [deg]
revision	3	Processing version of data
ontime	9683.1999638975	Sum of GTIs [s]
livetime	9441.0373557232	Livetime [s]
ontime6	9681.5589438081	Sum of GTIs [s]
ontime7	9683.1999638975	Sum of GTIs [s]
ontime8	9683.1999638975	Sum of GTIs [s]
l2events	27629	Number of level 2 events



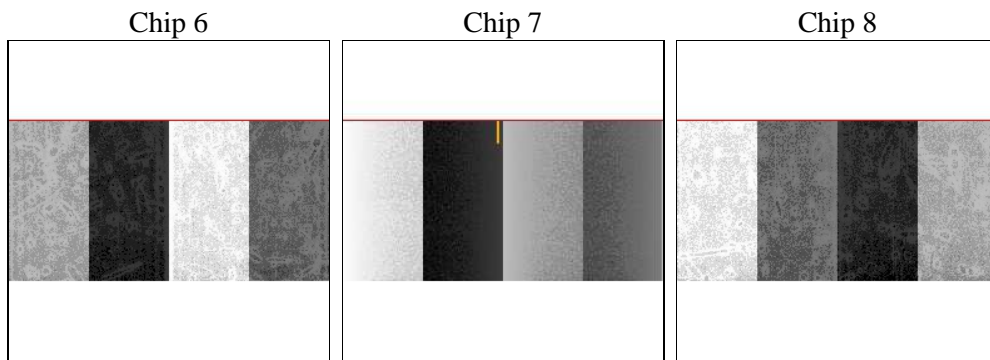
## 2 OBI

### 2.1 OBI

#### 2.1.1 Images



#### 2.1.2 Bias



### 2.1.3 Parameters

obi_num	0	Obi number	sched_exp_time	9500.000000	[s] Scheduled observation exposure time
ascdsver	8.5.1	Processing system revision	ontime	9683.1999638975	Sum of GTIs [s]
caldbver	4.5.5	&#160	ontime6	9681.5589438081	Sum of GTIs [s]
date	2012-12-15T22:38:21	Date and time of file creation	ontime7	9683.1999638975	Sum of GTIs [s]
revision	3	Processing version of data	ontime8	9683.1999638975	Sum of GTIs [s]
			l1events	138802	Number of level 1 events

### 2.1.4 Events

	<b>ccd 6</b>	<b>ccd 7</b>	<b>ccd 8</b>
level 1 events	39214	49177	50411
rejected events	34809	28682	40734
rejected %	88%	58%	80%

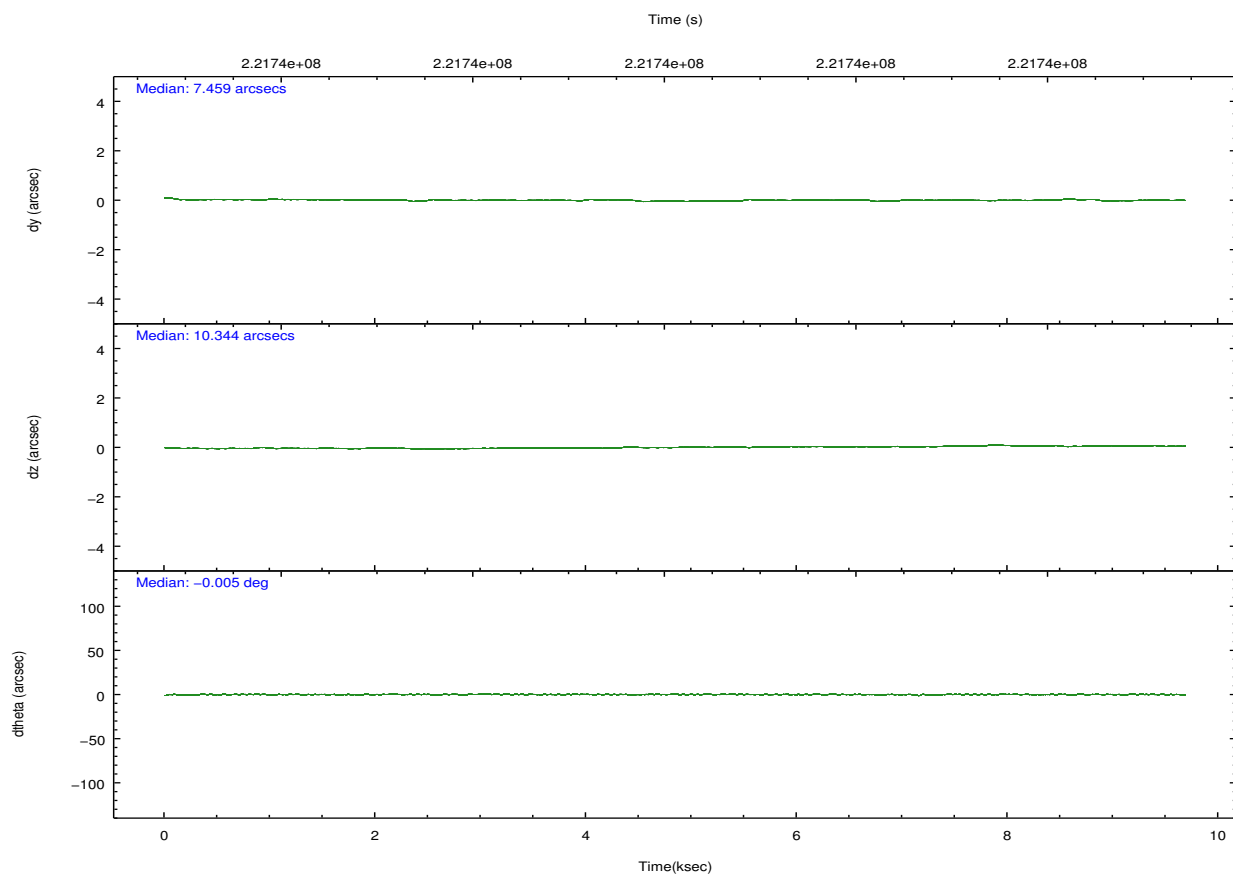
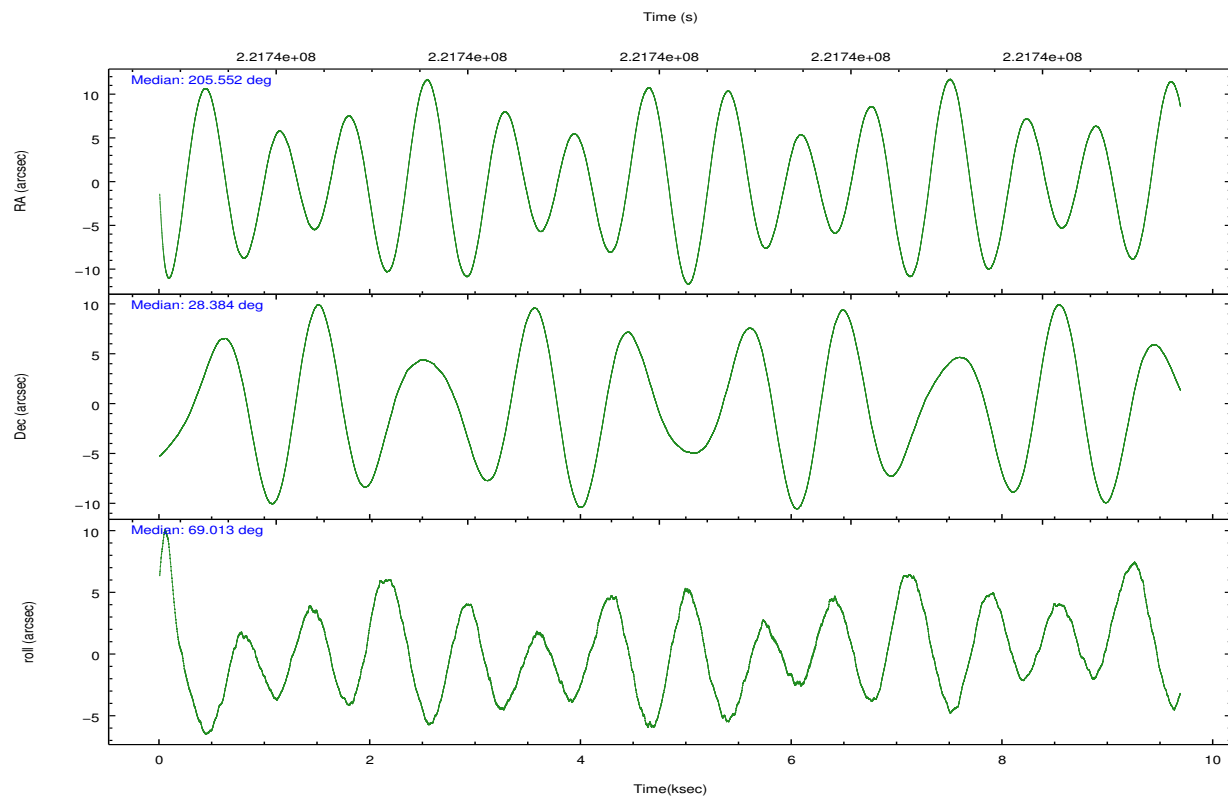
	<b>ccd 6</b>	<b>ccd 7</b>	<b>ccd 8</b>
grade 0 events	1758	2294	3070
	4%	4%	6%
grade 1 events	10	38	28
	0%	0%	0%
grade 2 events	871	4275	2140
	2%	8%	4%
grade 3 events	500	2049	1198
	1%	4%	2%
grade 4 events	546	2049	1086
	1%	4%	2%
grade 5 events	1674	4826	2235
	4%	9%	4%
grade 6 events	890	10523	2632
	2%	21%	5%
grade 7 events	32965	23123	38022
	84%	47%	75%



## 2.2 Compared Parameters

Parameter	Planned	Actual	Parameter	Planned	Actual
Instrument	ACIS	ACIS	Obspar format version number	7	7
Detector	ACIS-678	ACIS-678	Obspar file type	PREDICTED	ACTUAL
Grating	NONE	NONE	Obspar update status	NONE	UPDATED
Data mode	VFAINT	VFAINT	Number of optional ACIS chips dropped	0	0
Observation mode	POINTING	POINTING	On-chip summing requested	N	N
[deg] Pointing RA	205.557604	205.552356296039	Subarray requested	CUSTOM	1/2
[deg] Pointing Dec	28.357004	28.38387349016756	Subarray start row	257	257
[deg] Pointing Roll	68.857984	69.01711331151796	Subarray row count	512	512
[mm] SIM focus pos	-0.684267	-0.6828225247311905	Alternating exposures requested	N	N
[mm] SIM defocus	0	0.001444936568705701	[s] Primary exposure time	0.000000	1.6
[mm] SIM translation stage pos	-190.132523	-190.1425803651734			
[mm] SIM translation stage offset	0	0.01005778216563158			
[s] Observation start time (MET)	221735458.184000	221734534.761			
Observation start date	2005-01-10T09:09:54	2005-01-10T08:55:34			
[s] Observation end time (MET)	221744958.184000	221745561.71149			
Observation end date	2005-01-10T11:48:14	2005-01-10T11:59:21			
Read mode	TIMED	TIMED			

## 2.3 Aspect

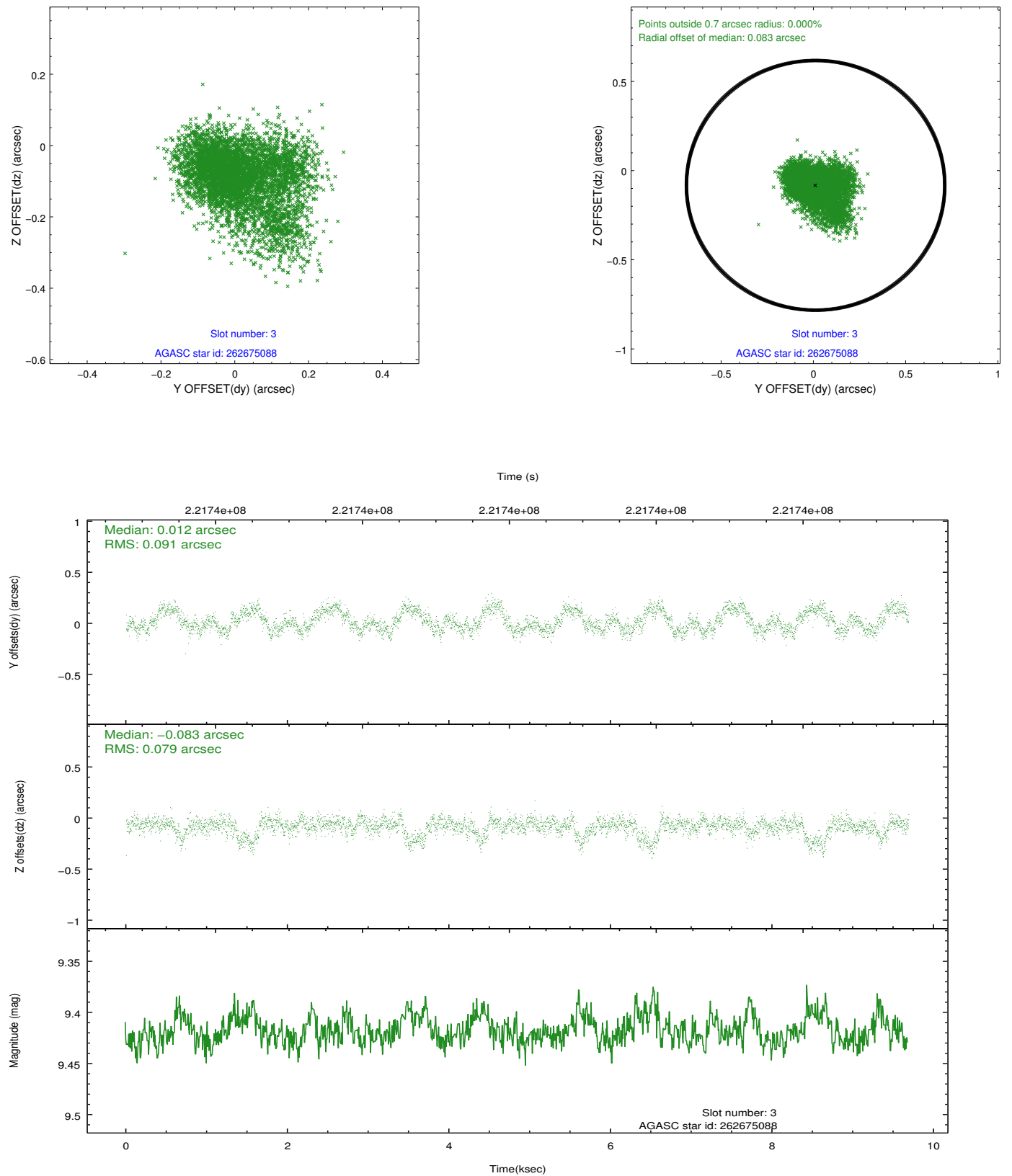


### Slot Statistics

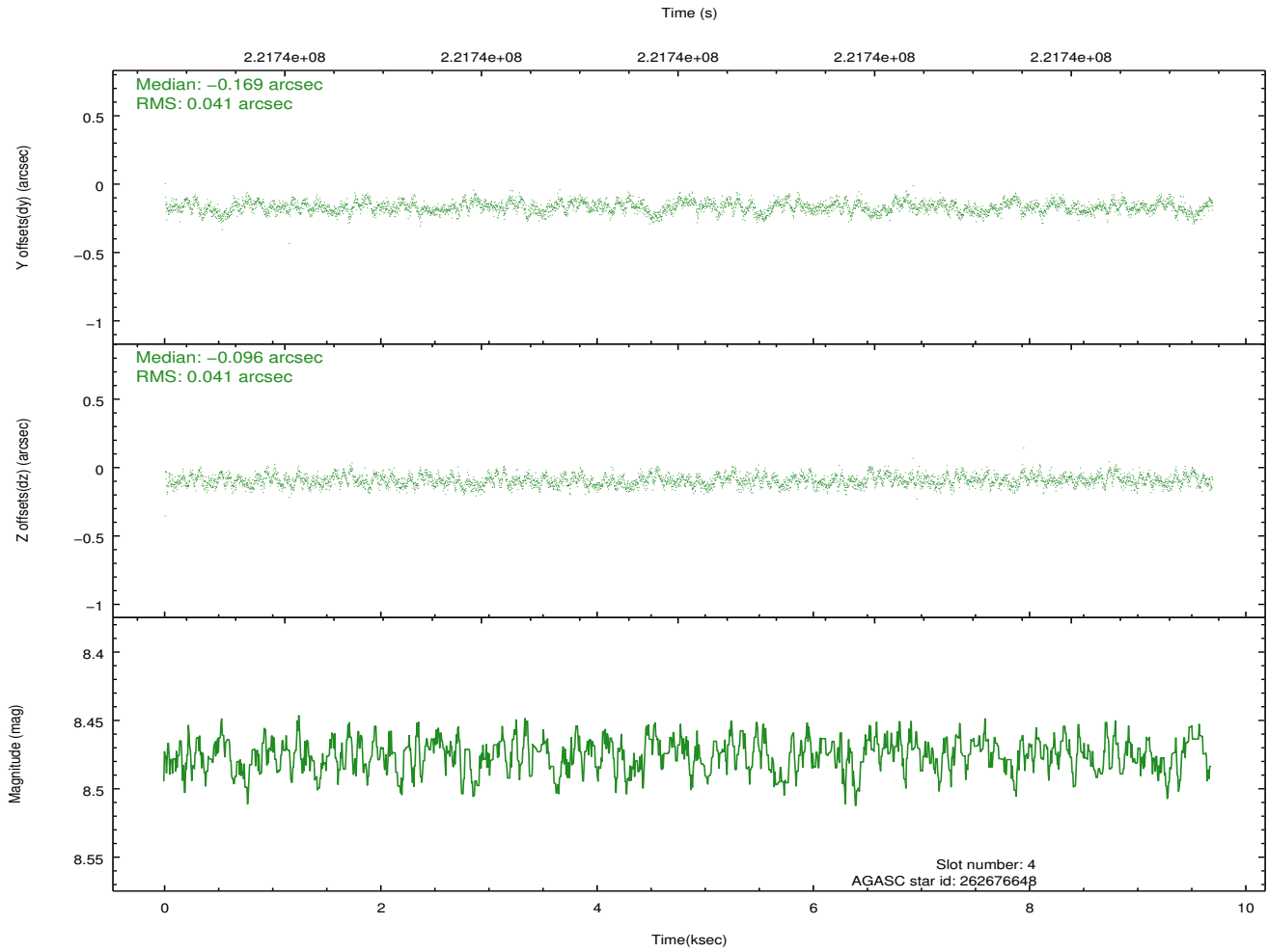
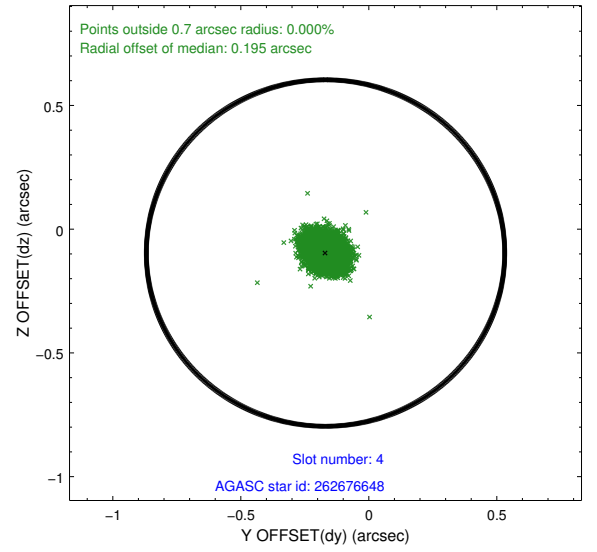
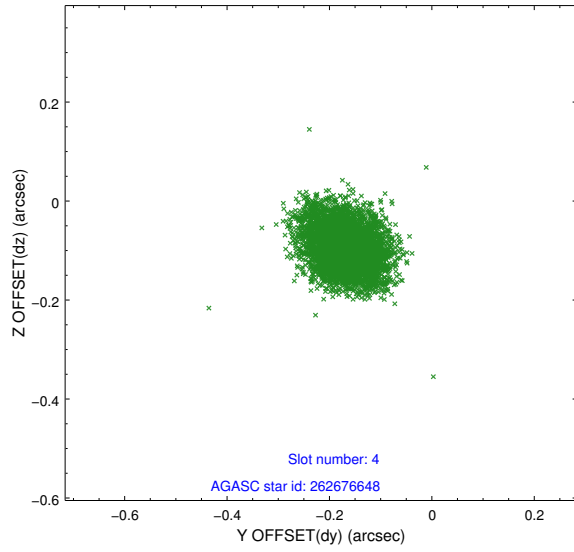
slot	status	id	mag	n_pts	med_dy	med_dz	dr1	dr2	ra	dec	mean_y	mean_z
0	FID	ACIS-S-2	7.11	2363	-0.056	-0.030	0.007	0.011	0.000000	0.000000	-760.23	-1731.60
1	FID	ACIS-S-4	7.21	2363	0.111	0.035	0.006	0.011	0.000000	0.000000	2152.91	176.45
2	FID	ACIS-S-5	7.23	2362	-0.086	0.004	0.007	0.011	0.000000	0.000000	-1812.44	170.62
3	GUIDE	262675088	9.42	4724	0.012	-0.083	0.127	0.211	204.972671	28.348526	-692.79	1719.03
4	GUIDE	262676648	8.47	4727	-0.169	-0.096	0.061	0.100	205.067150	29.027569	1697.22	2312.21
5	GUIDE	262679552	8.58	4723	0.171	0.175	0.078	0.127	205.617019	28.202388	-450.73	-375.76
6	GUIDE	262681752	9.58	4725	-0.023	-0.101	0.086	0.142	205.441552	28.454810	195.94	469.55
7	GUIDE	262673792	7.43	4726	-0.004	0.109	0.063	0.099	206.043917	27.585501	-2027.78	-2447.87

## 2.4 Star Slots

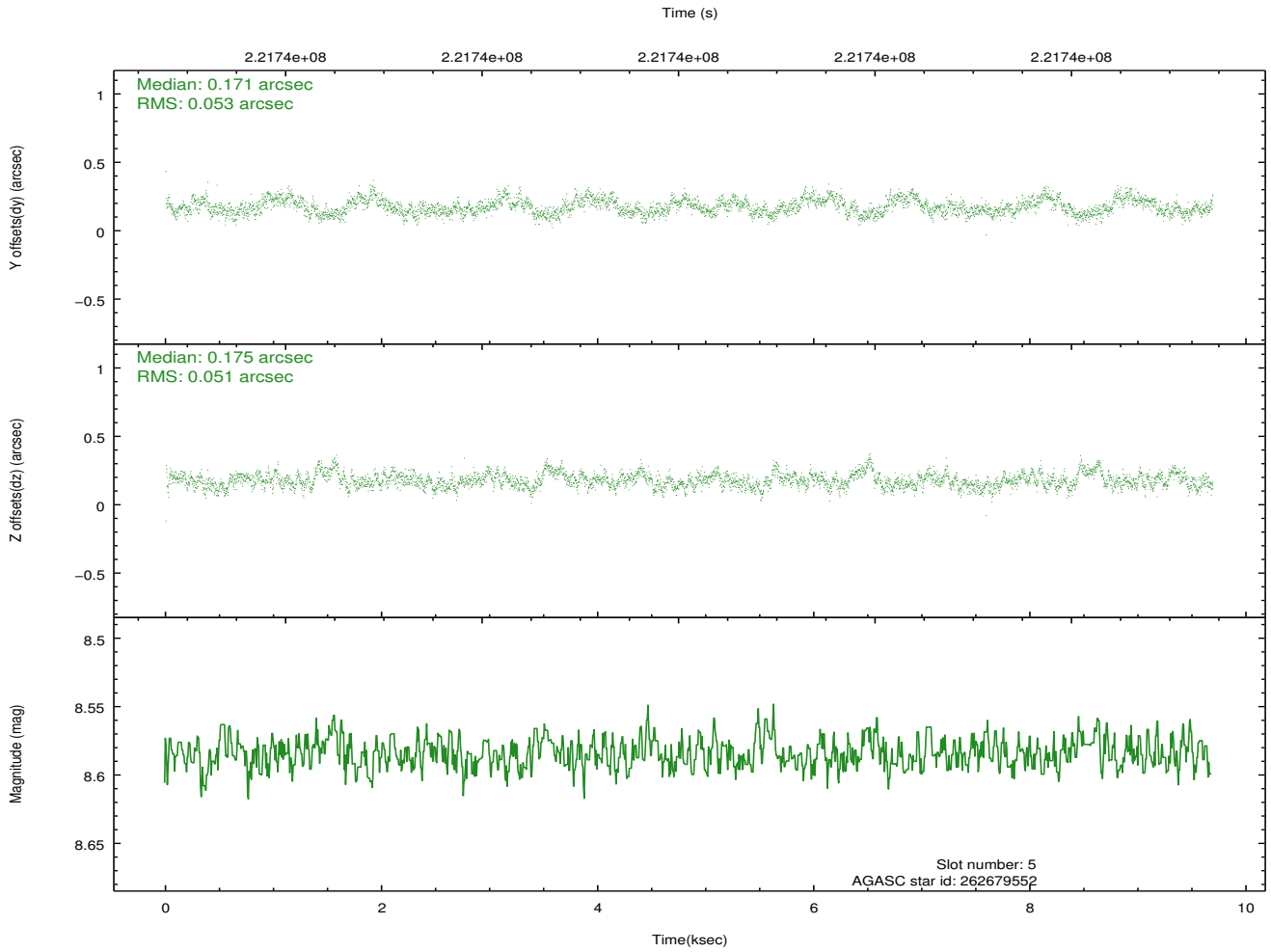
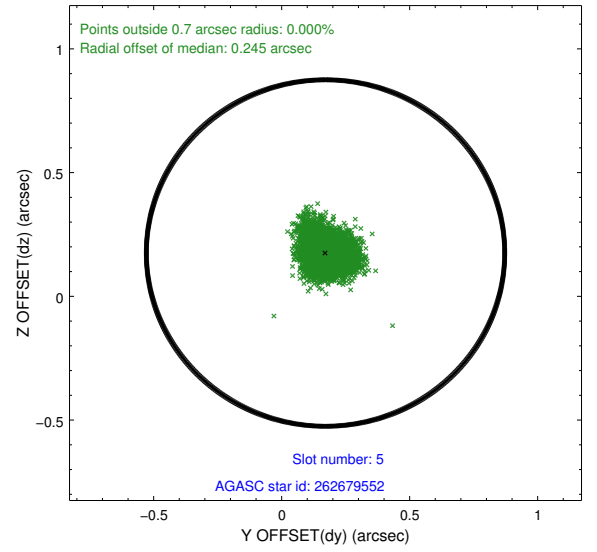
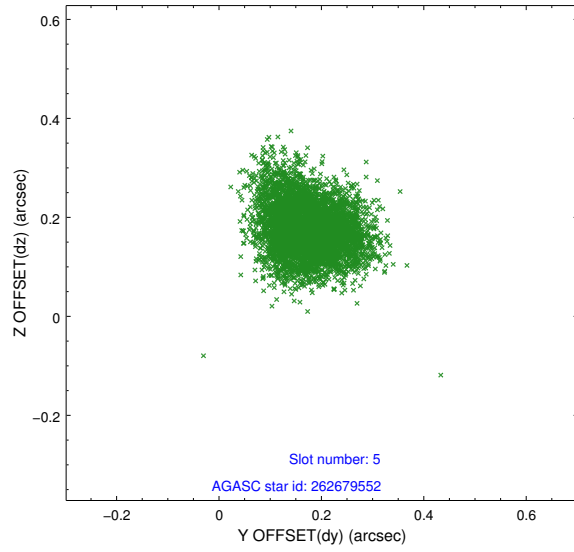
### 2.4.1 Slot 3



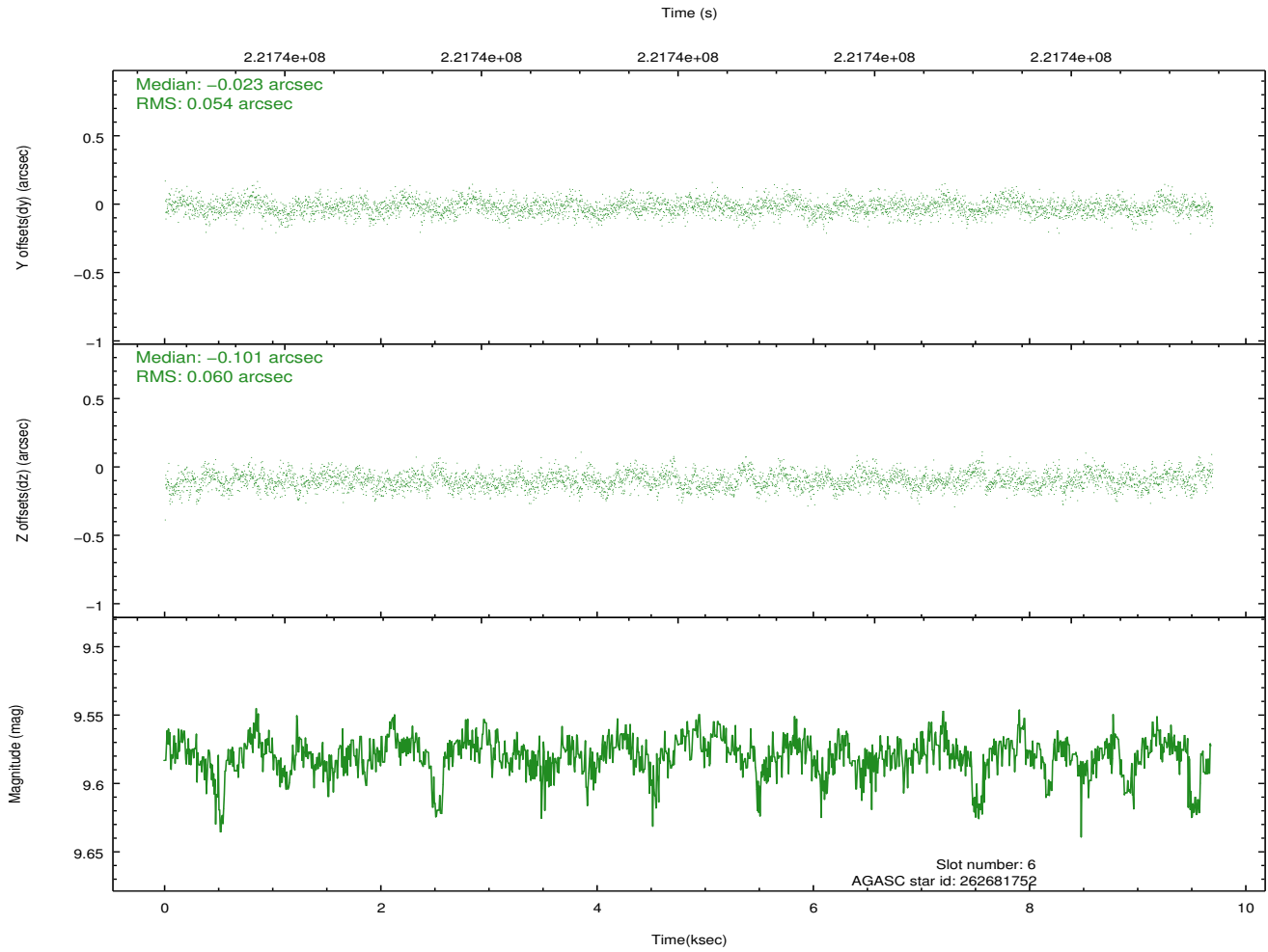
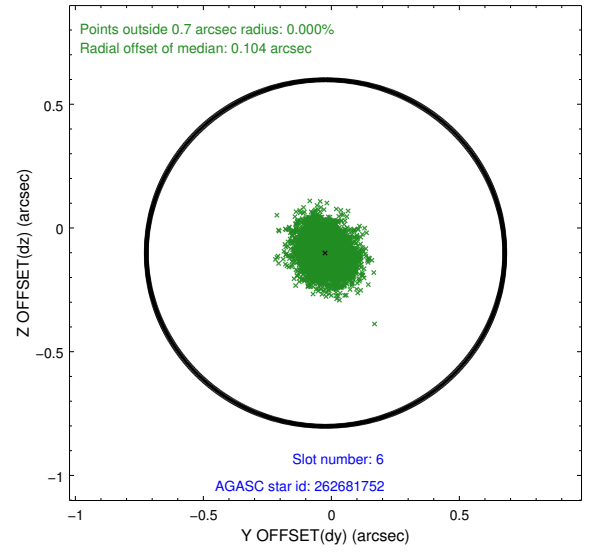
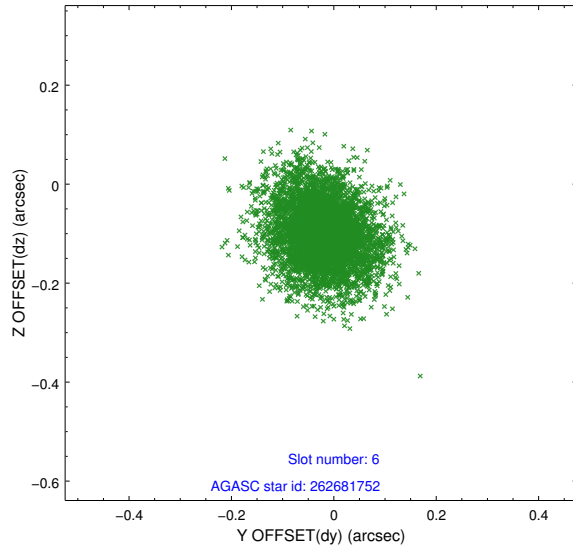
## 2.4.2 Slot 4



### 2.4.3 Slot 5

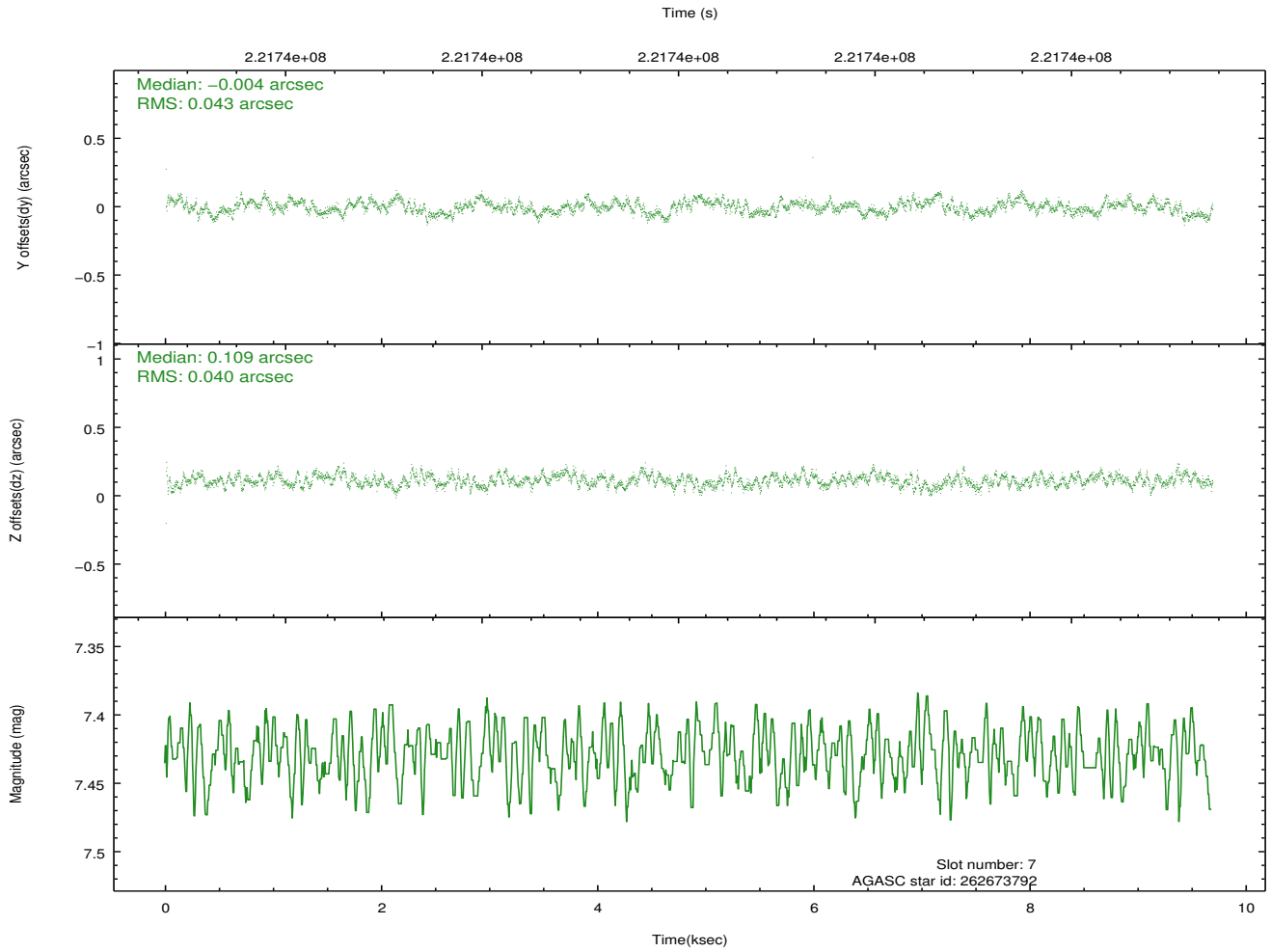
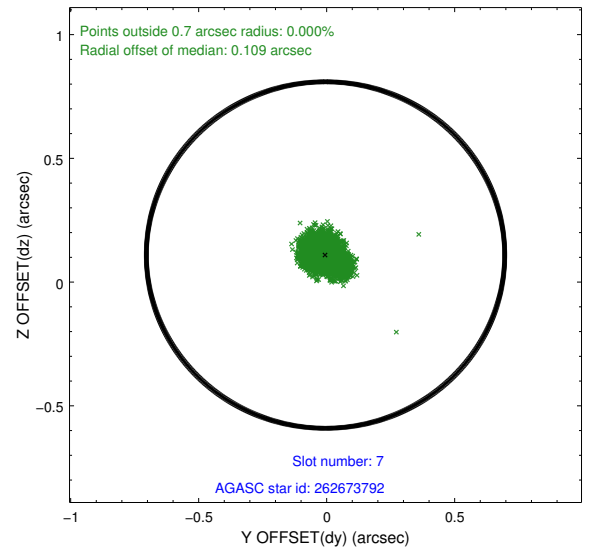
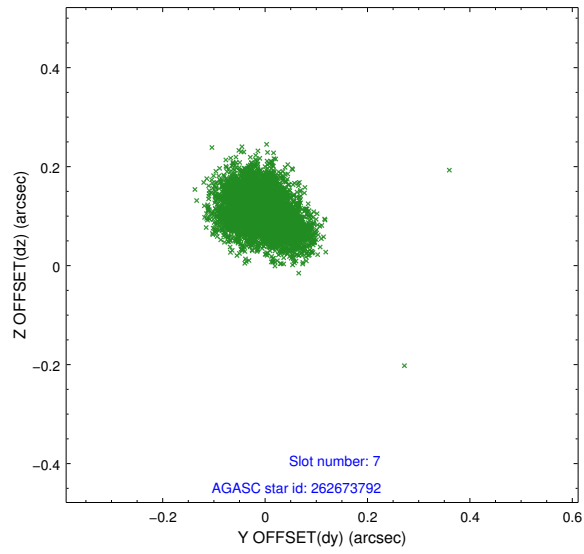


## 2.4.4 Slot 6



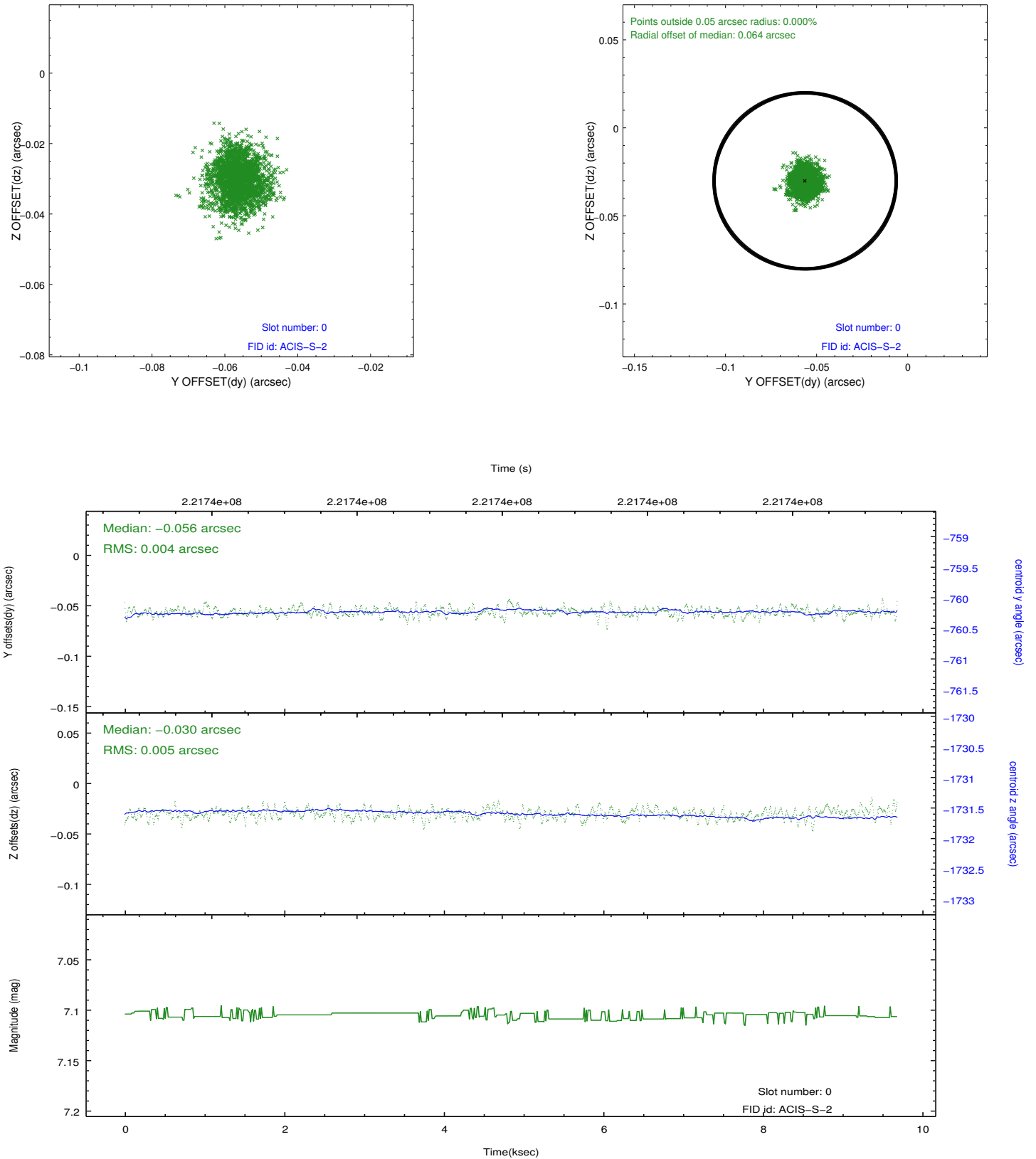


## 2.4.5 Slot 7

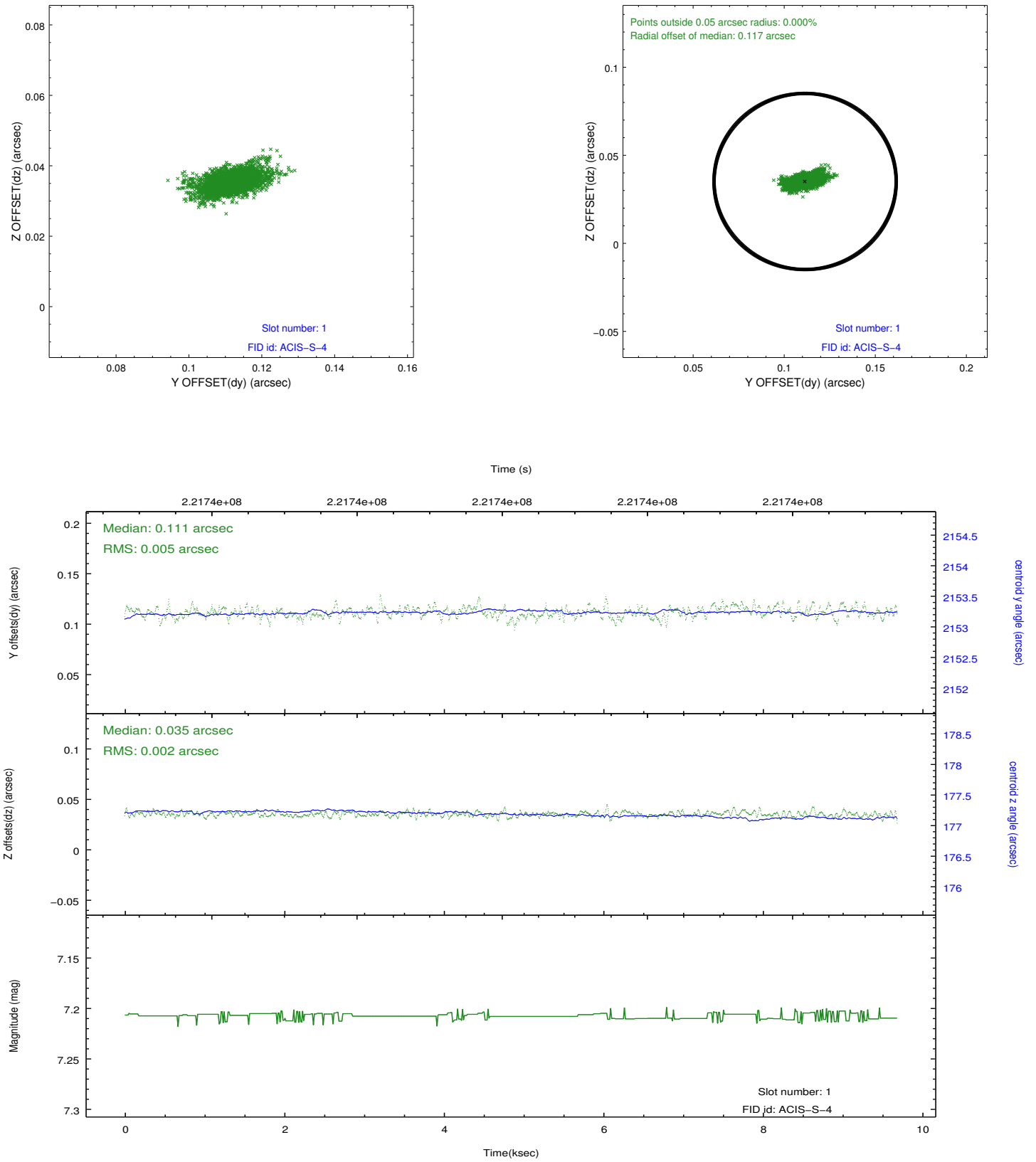


## 2.5 FID Slots

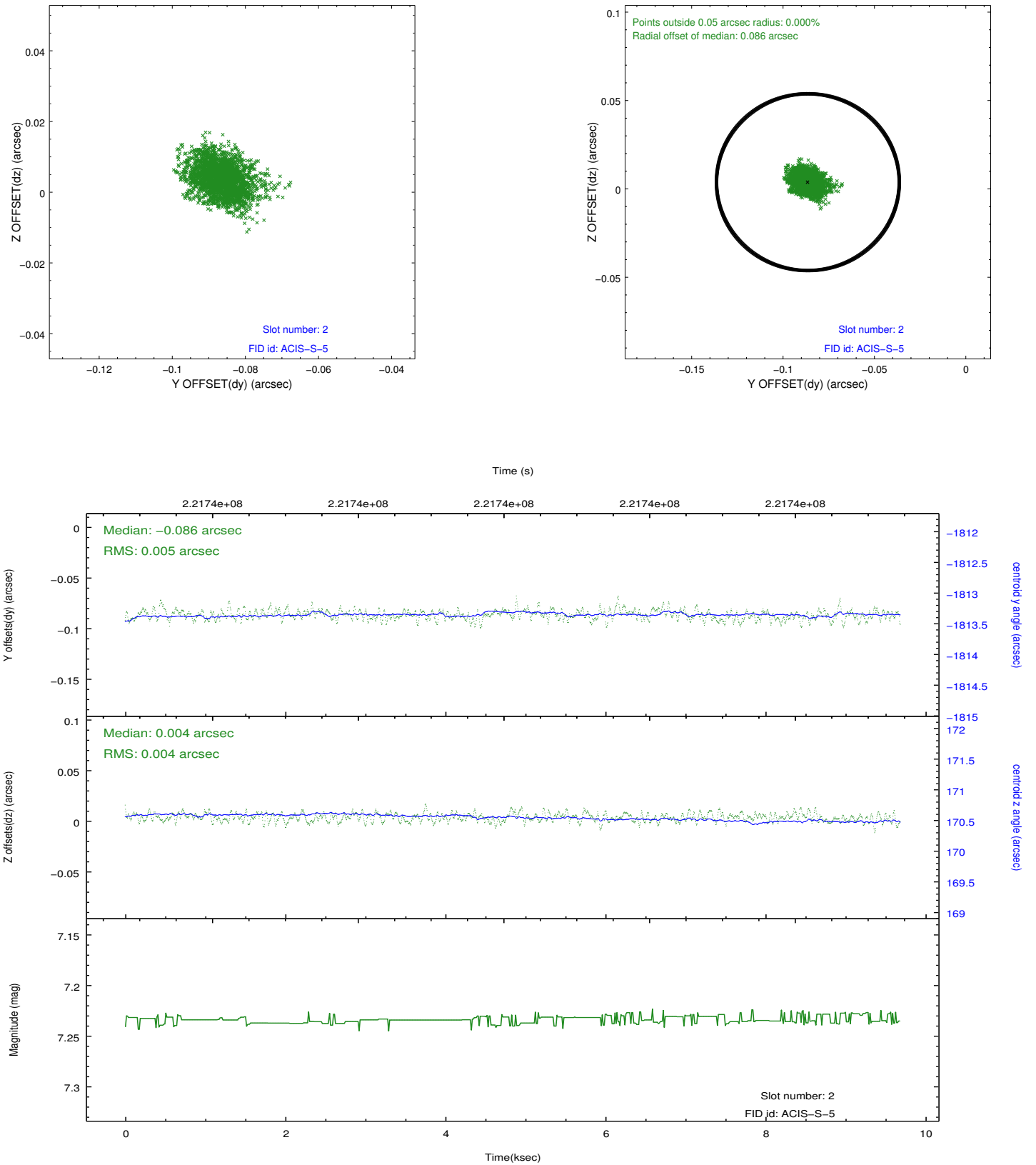
### 2.5.1 Slot 0



## 2.5.2 Slot 1



### 2.5.3 Slot 2



# A Summary

## A.1 Status

V&V Scientist	Beth Sundheim
V&V Date (YYYY-MM-DD)	2013.01.08
V&V Edition	1
V&V Disposition and Status	OK
V&V Charge Time	9.683199

## A.2 Comments

Joint proposal with HST.