

V&V Reference Report

L2 ASCDS Version : 7.6.7.1

Observation 4541 - L2 Version 002
Chandra X-Ray Center

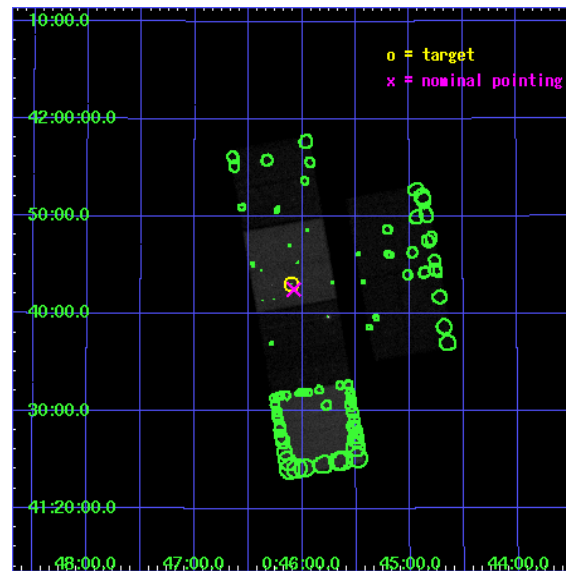
L2 Processing Date : Apr 10 2006

Contents

1	Front	2
2	OBI	3
2.1	OBI	3
2.1.1	Images	3
2.1.2	Bias	3
2.1.3	Parameters	4
2.1.4	Events	4
2.2	Compared Parameters	5
2.3	Aspect	6
2.4	Star Slots	9
2.4.1	Slot 3	9
2.4.2	Slot 4	10
2.4.3	Slot 5	11
2.4.4	Slot 6	12
2.4.5	Slot 7	13
2.5	FID Slots	14
2.5.1	Slot 0	14
2.5.2	Slot 1	15
2.5.3	Slot 2	16
3	Point Sources	17
A	Summary	18
A.1	Status	18
A.2	Comments	18

1 Front

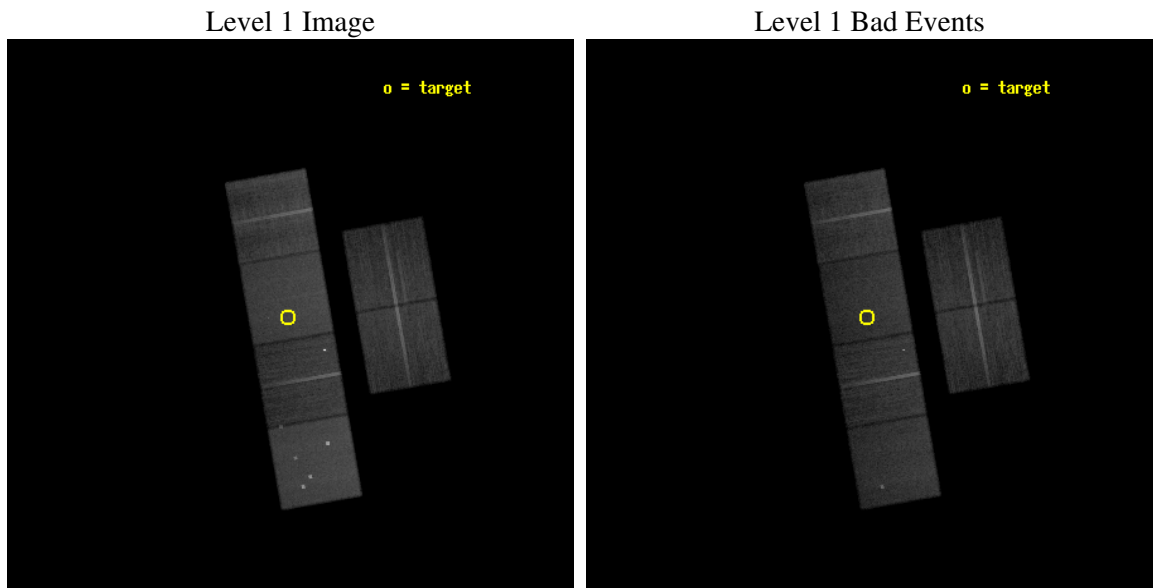
seq_num	300135
obs_id	4541
title	Understanding the nature of supersoft X-ray sources
observer	Dr. Jochen Greiner
object	M31-0046.0+4143
dtcycle	0
cycle	P
ra_targ	11.52375
dec_targ	41.717778
ra_nom	11.519338165035
dec_nom	41.708706719847
roll_nom	260.0195587364
revision	2
ontime	25955.199903309
livetime	25626.539533789
ontime2	25955.199903309
ontime3	25951.958913028
ontime5	25955.199903309
ontime6	25955.199903309
ontime7	25955.199903309
ontime8	25955.199903309
l2events	325767



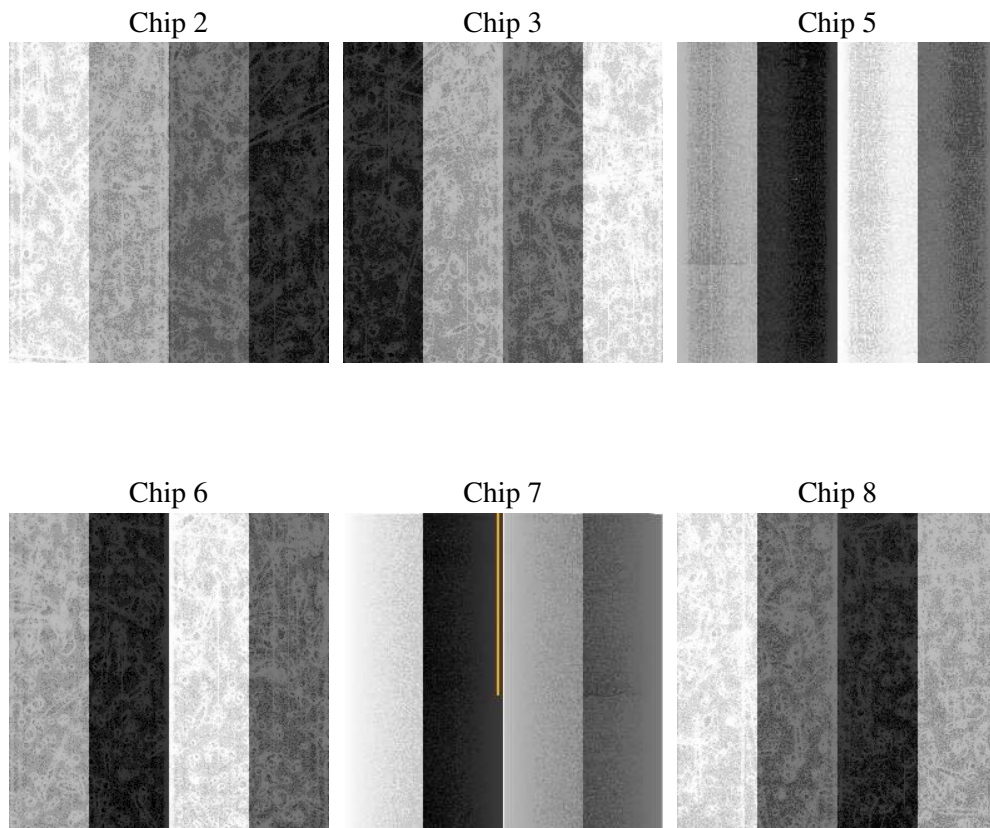
2 OBI

2.1 OBI

2.1.1 Images



2.1.2 Bias



2.1.3 Parameters

obi_num	0
ascdsver	7.6.7.1
caldsver	3.2.1
date	2006-04-10T19:35:57
revision	2

sched_exp_time	26000.000000
ontime	25960.485216767
ontime2	25960.485196859
ontime3	25960.485226661
ontime5	25960.485216767
ontime6	25963.726216942
ontime7	25960.485216767
ontime8	25963.72623688
l1events	1452095

2.1.4 Events

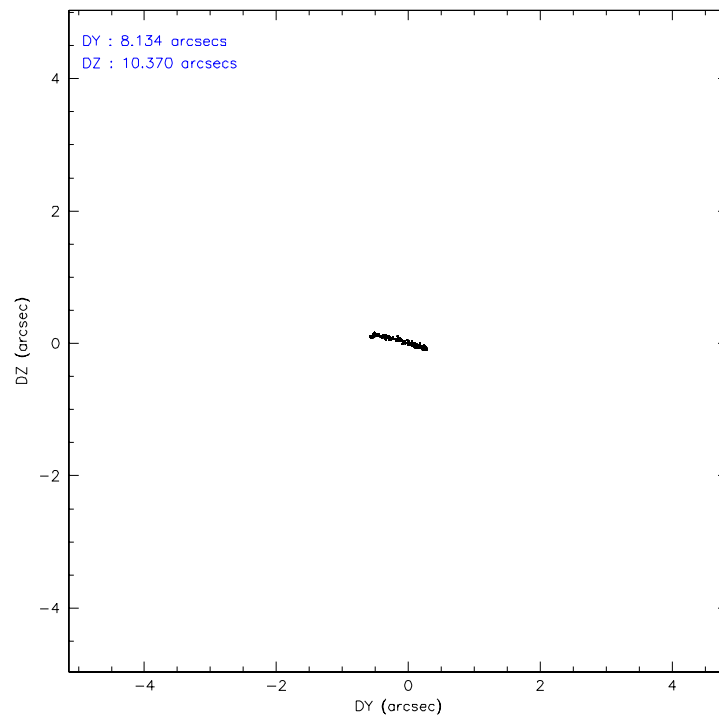
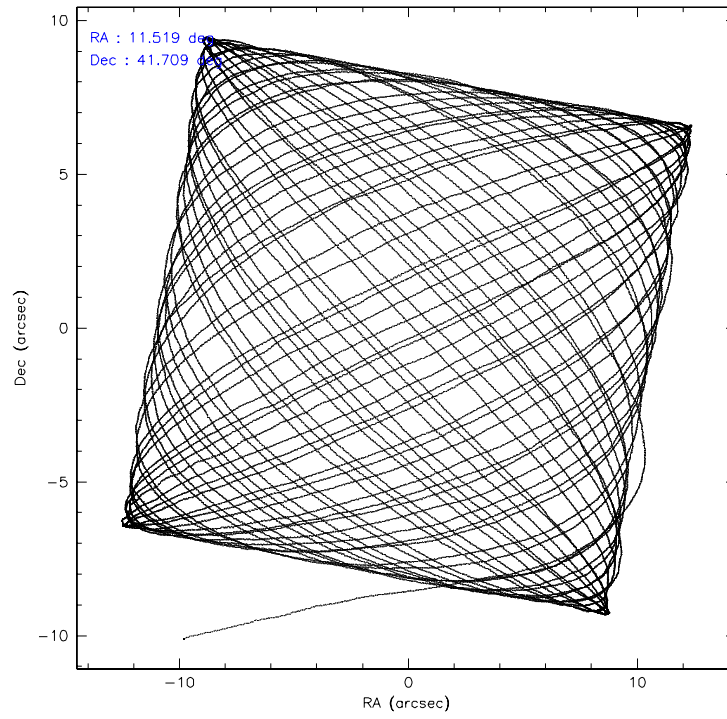
	ccd 2	ccd 3	ccd 5	ccd 6	ccd 7	ccd 8
level 1 events	205244	191691	309837	222170	270230	252923
rejected events	181504	168746	168840	181167	167295	199524
rejected %	88%	88%	54%	81%	61%	78%

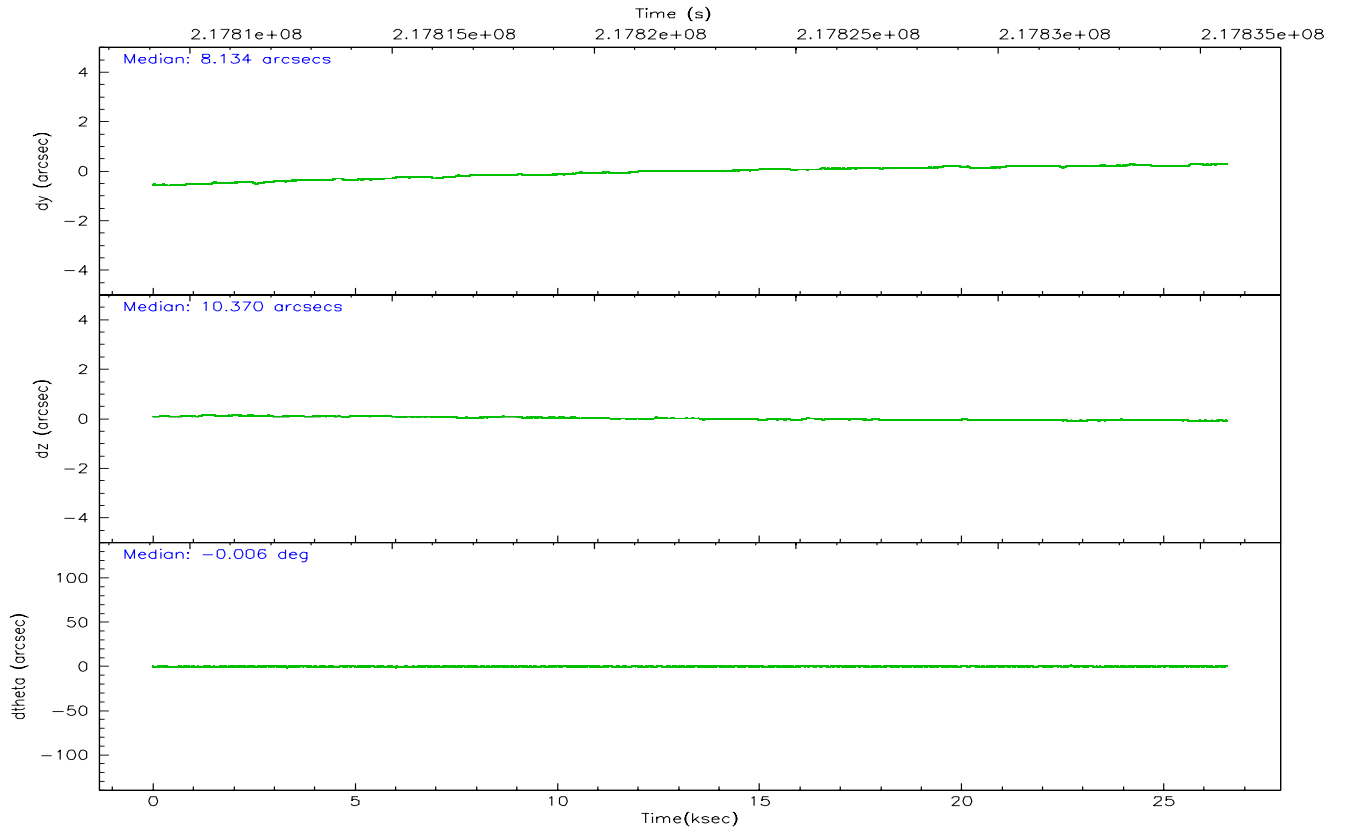
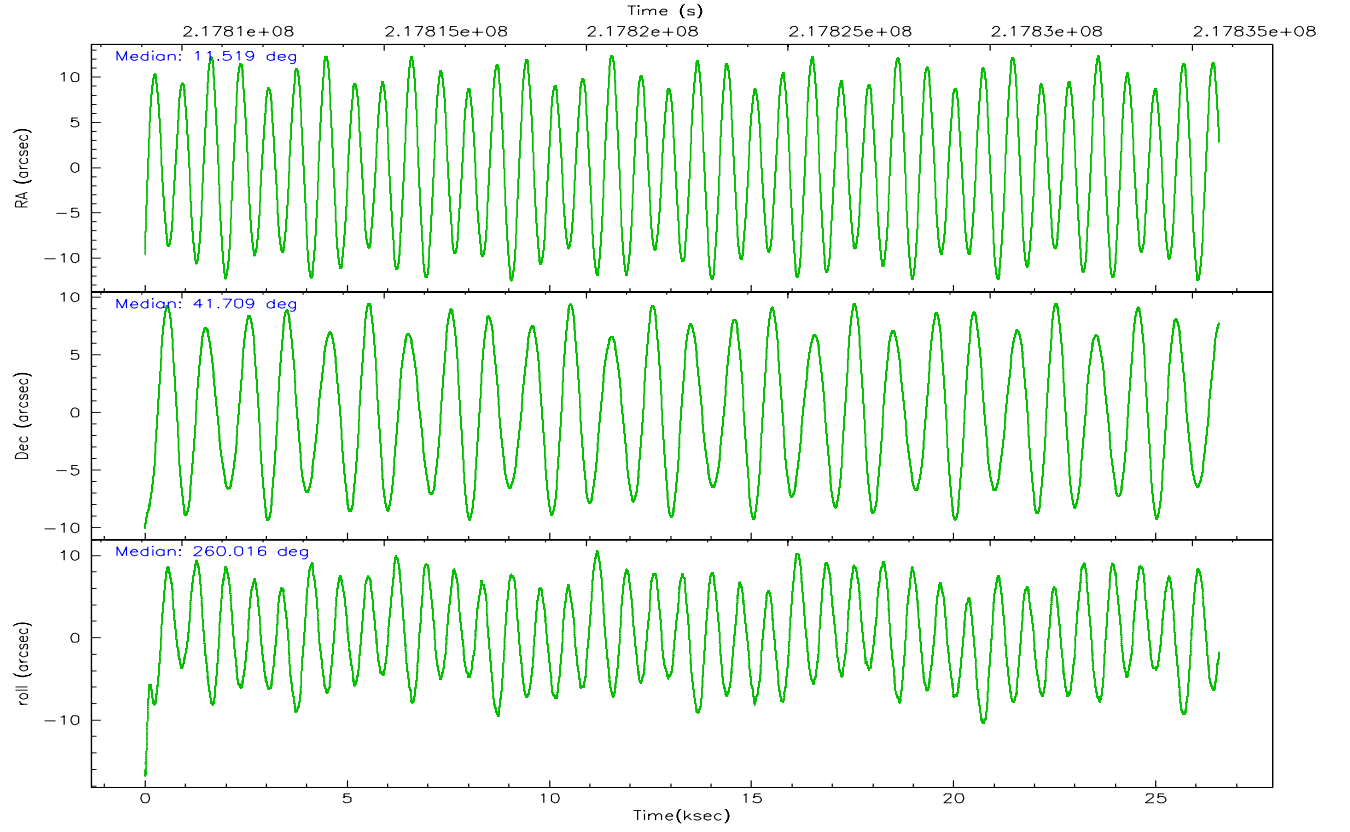
	ccd 2	ccd 3	ccd 5	ccd 6	ccd 7	ccd 8
grade 0 events	10496	9987	17540	22392	5646	16450
	5%	5%	5%	10%	2%	6%
grade 1 events	120	123	300	1065	162	171
	0%	0%	0%	0%	0%	0%
grade 2 events	4806	4468	42712	7134	25653	11801
	2%	2%	13%	3%	9%	4%
grade 3 events	2269	2278	2847	3051	4991	5628
	1%	1%	0%	1%	1%	2%
grade 4 events	2227	2207	2542	3059	4895	5253
	1%	1%	0%	1%	1%	2%
grade 5 events	8018	8710	14477	9575	17554	12123
	3%	4%	4%	4%	6%	4%
grade 6 events	3946	4016	75391	5377	61771	14280
	1%	2%	24%	2%	22%	5%
grade 7 events	173362	159902	154028	170517	149558	187217
	84%	83%	49%	76%	55%	74%

2.2 Compared Parameters

Parameter	Planned	Actual	Parameter	Planned	Actual
Instrument	ACIS	ACIS	Obspar format version number	6	6
Detector	ACIS-235678	ACIS-235678	Obspar file type	PREDICTED	ACTUAL
Grating	NONE	NONE	Obspar update status	NONE	UPDATED
Data mode	FAINT	FAINT	On-chip summing requested	N	N
Observation mode	POINTING	POINTING	Subarray requested	NONE	NONE
Pointing RA	11.506348	11.5193381650354	Alternating exposures requested	N	N
Pointing Dec	41.734153	41.70870671984721	Primary exposure time	0.000000	3.2
Pointing Roll	259.871585	260.0195587363984			
SIM focus pos (mm)	-0.684267	-0.6828225247311905			
SIM defocus (mm)	0	0.001444936568705701			
SIM translation stage pos (mm)	-190.132523	-190.1400660498719			
SIM translation stage offset (mm)	0	0.00754346686406393			
Observation start time	217809657.184000	217808500.65925			
Observation start date	2004-11-25T22:39:53	2004-11-25T22:21:40			
Observation end time	217835657.184000	217836560.54801			
Observation end date	2004-11-26T05:53:13	2004-11-26T06:09:20			
Read mode	TIMED	TIMED			

2.3 Aspect



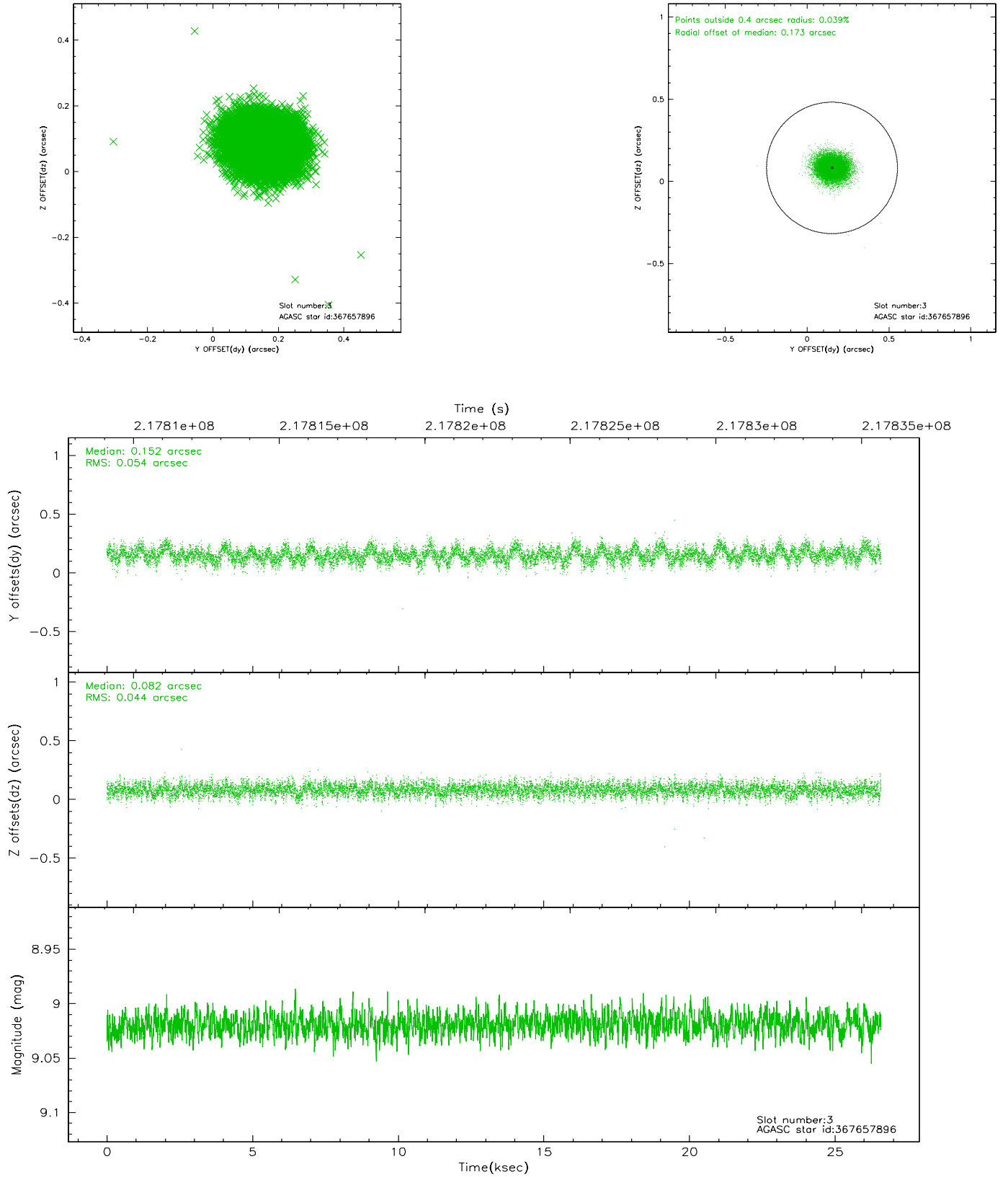


Slot Statistics

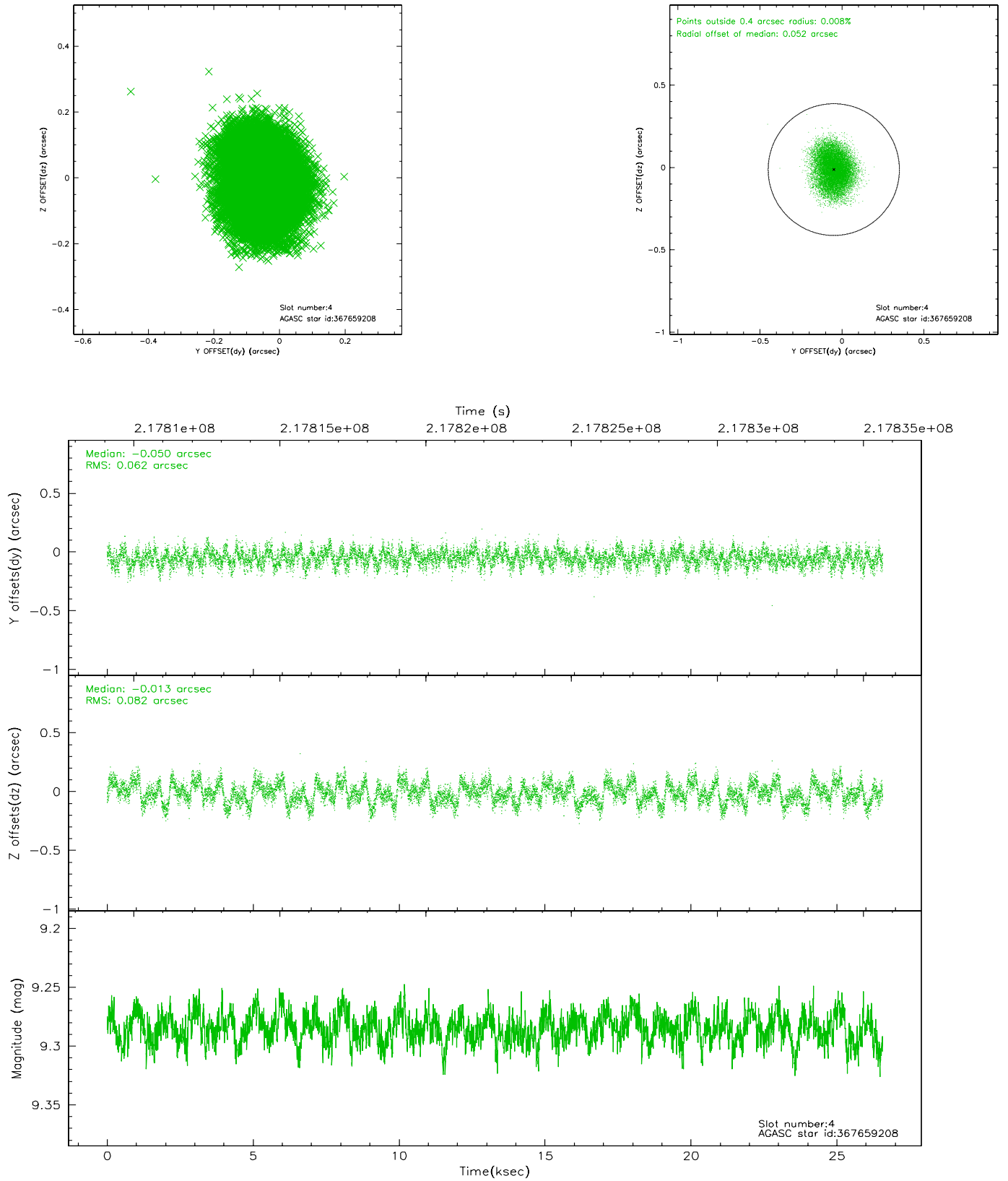
slot	status	id	mag	n_pts	med_dy	med_dz	dr1	dr2	ra	dec	mean_y	mean_z
0	FID	ACIS-S-1	7.19	6480	0.023	-0.028	0.008	0.018	0.000000	0.000000	935.21	-1727.30
1	FID	ACIS-S-5	7.24	6482	-0.058	0.015	0.015	0.023	0.000000	0.000000	-1813.82	170.19
2	FID	ACIS-S-6	7.35	6481	0.014	0.025	0.013	0.021	0.000000	0.000000	400.63	814.28
3	GUIDE	367657896	9.02	12956	0.152	0.082	0.074	0.120	11.197765	41.313576	1636.13	-555.10
4	GUIDE	367659208	9.28	12956	-0.050	-0.013	0.112	0.174	11.848231	42.124331	-1545.03	651.39
5	GUIDE	367663272	9.28	12954	-0.075	-0.033	0.107	0.176	10.656279	41.699429	514.17	-2229.45
6	GUIDE	367670520	9.24	12956	-0.012	0.013	0.093	0.148	11.265516	42.371946	-2148.19	-1034.63
7	GUIDE	367145056	7.41	12961	-0.016	-0.049	0.074	0.113	12.259409	41.132018	1766.10	2390.17

2.4 Star Slots

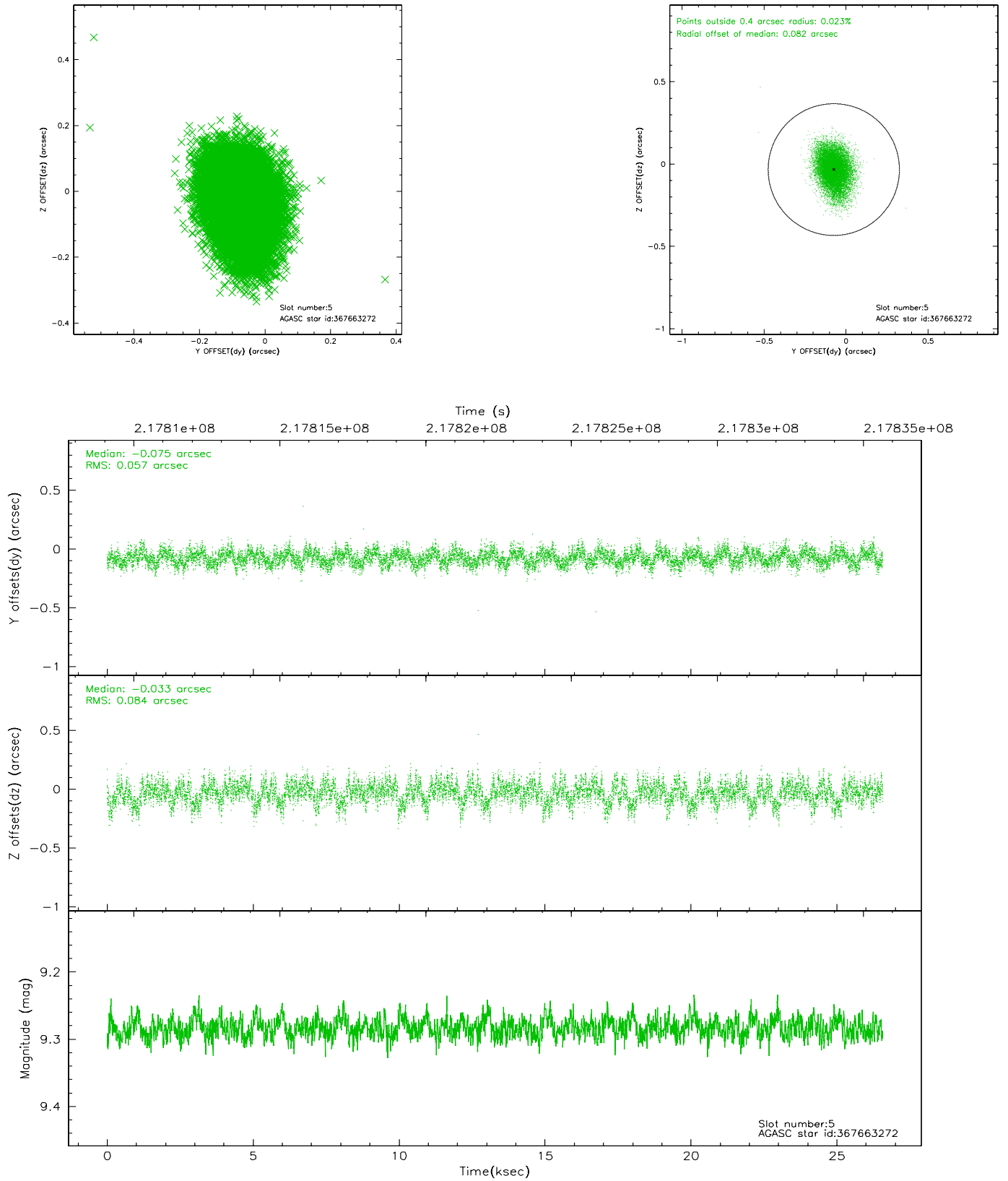
2.4.1 Slot 3



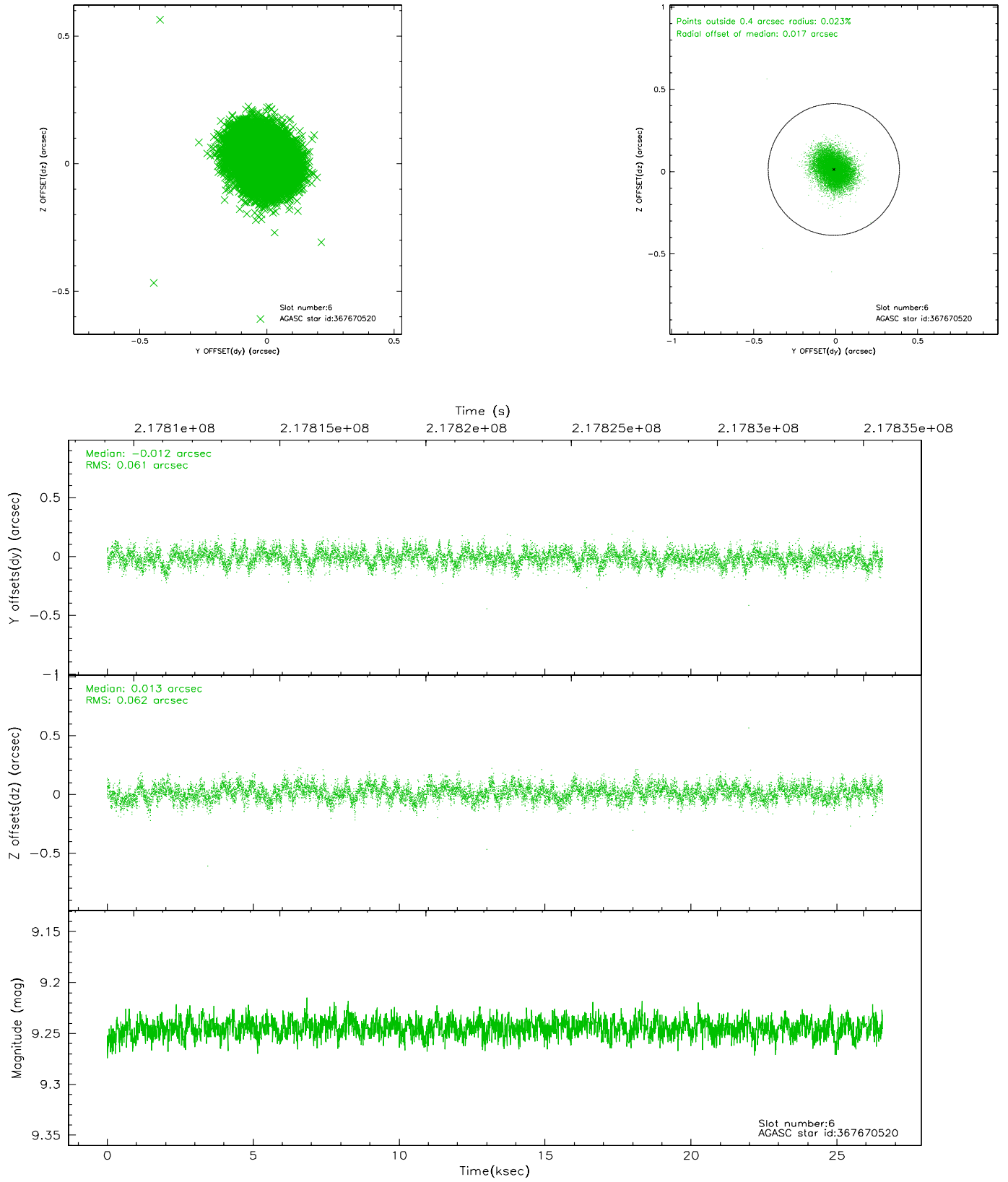
2.4.2 Slot 4



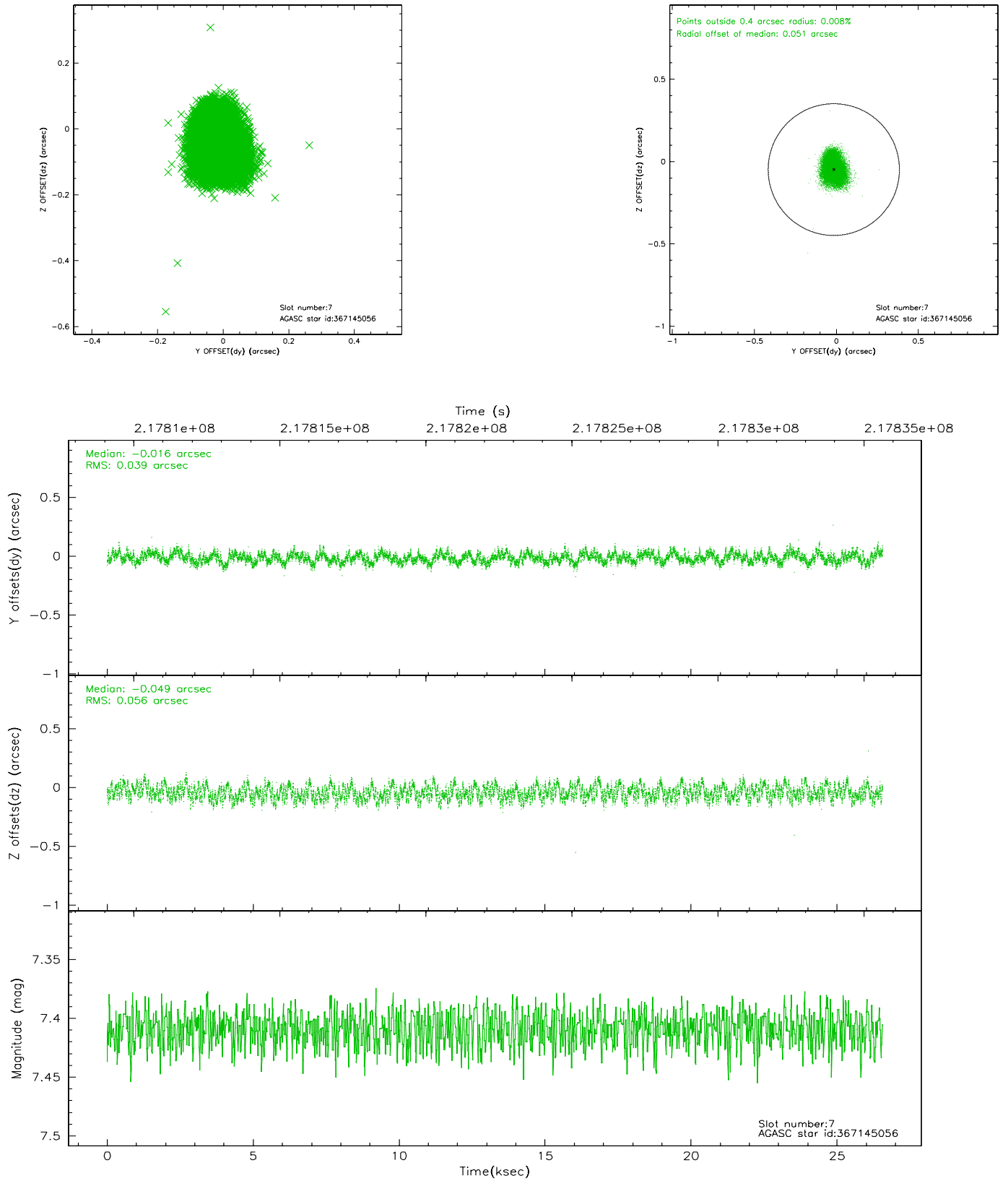
2.4.3 Slot 5



2.4.4 Slot 6

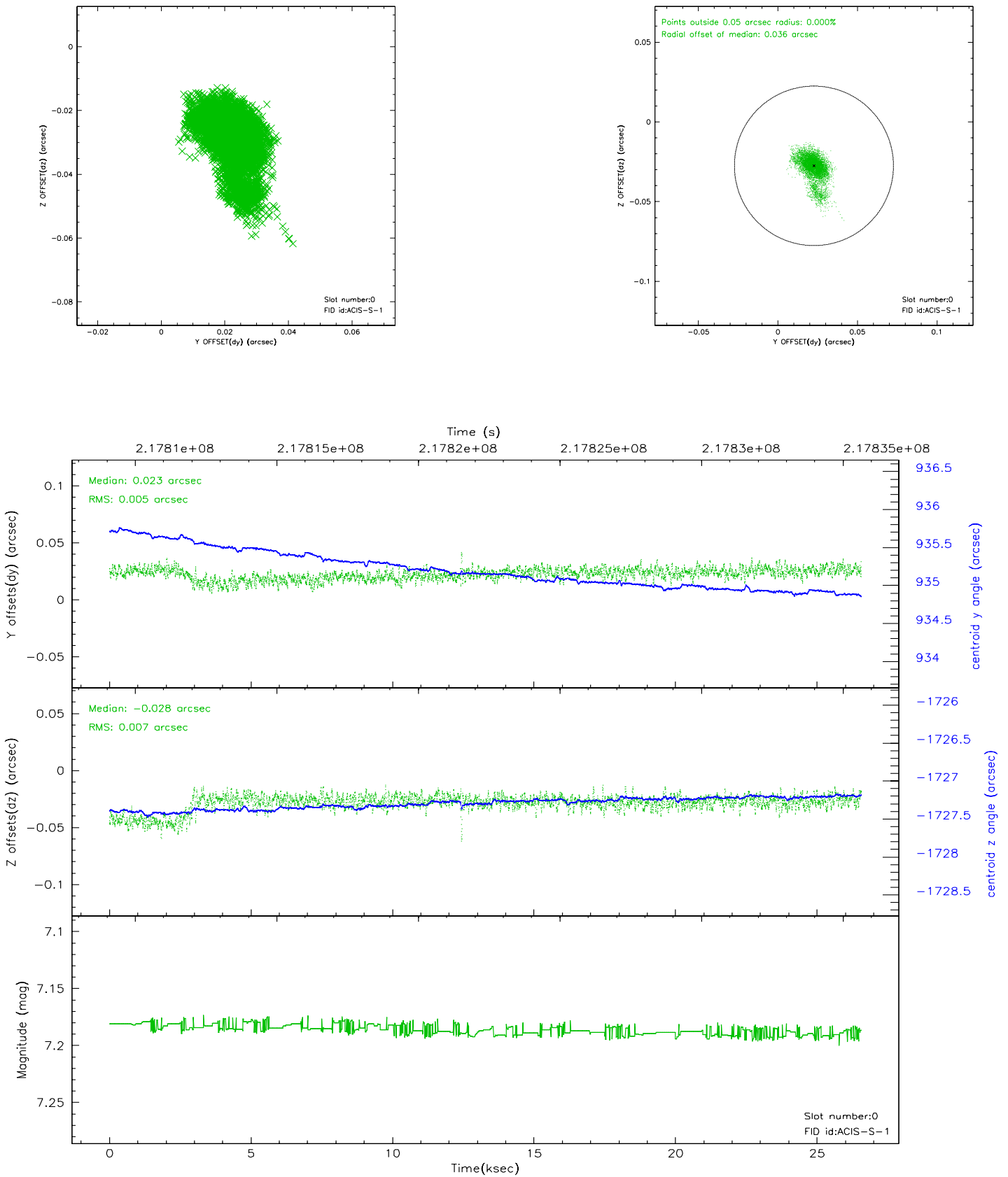


2.4.5 Slot 7

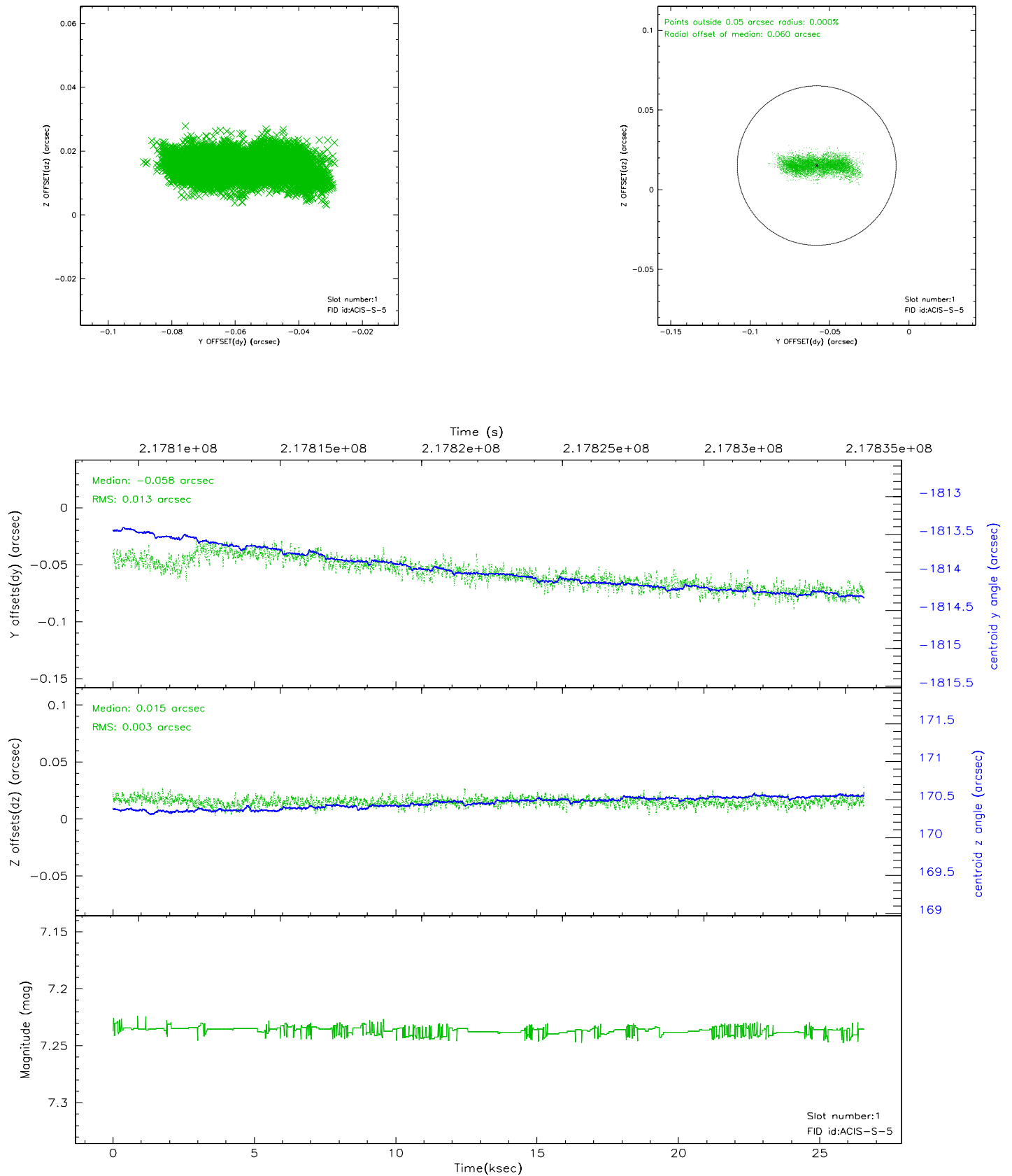


2.5 FID Slots

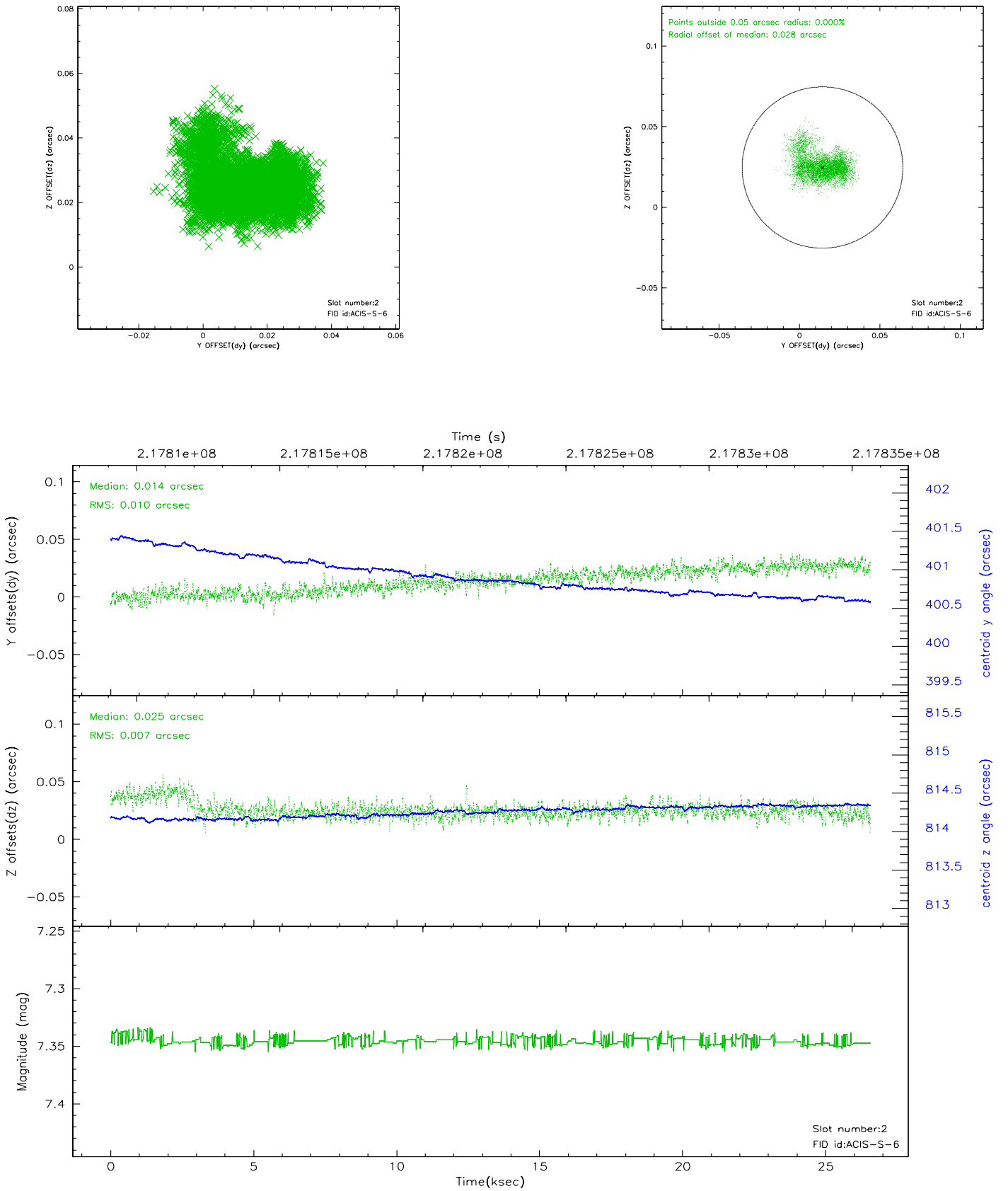
2.5.1 Slot 0



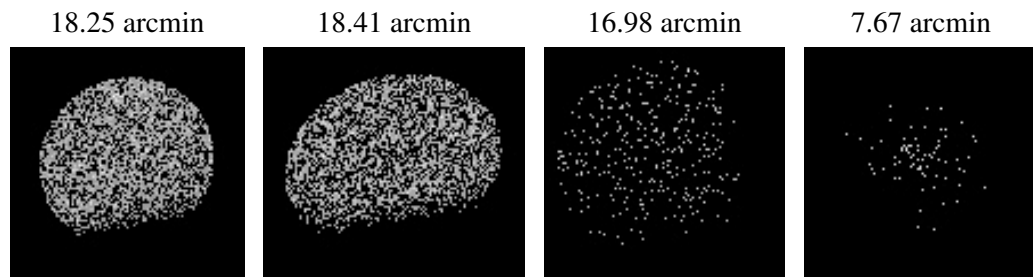
2.5.2 Slot 1



2.5.3 Slot 2



3 Point Sources



A Summary

A.1 Status

V&V Scientist	Doug Morgan
V&V Date (YYYY-MM-DD)	2006.04.10
V&V Edition	1
V&V Disposition and Status	OK
V&V Charge Time	25.95519

A.2 Comments