

V&V Reference Report

L2 ASCDS Version : 7.6.8

Observation 4540 - L2 Version 001
Chandra X-Ray Center

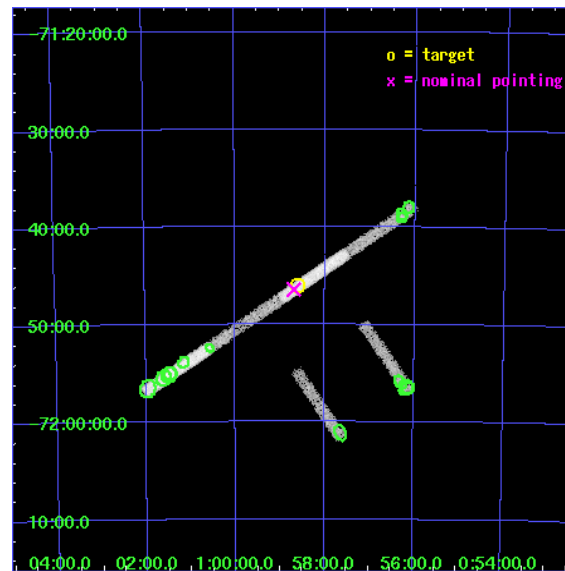
L2 Processing Date : Jun 27 2006

Contents

1	Front	2
2	OBI	3
2.1	OBI	3
2.1.1	Images	3
2.1.2	Bias	3
2.1.3	Parameters	4
2.1.4	Events	4
2.2	Compared Parameters	5
2.3	Aspect	6
2.4	Star Slots	9
2.4.1	Slot 3	9
2.4.2	Slot 4	10
2.4.3	Slot 5	11
2.4.4	Slot 6	12
2.4.5	Slot 7	13
2.5	FID Slots	14
2.5.1	Slot 0	14
2.5.2	Slot 1	15
2.5.3	Slot 2	16
3	Point Sources	17
A	Summary	18
A.1	Status	18
A.2	Comments	18

1 Front

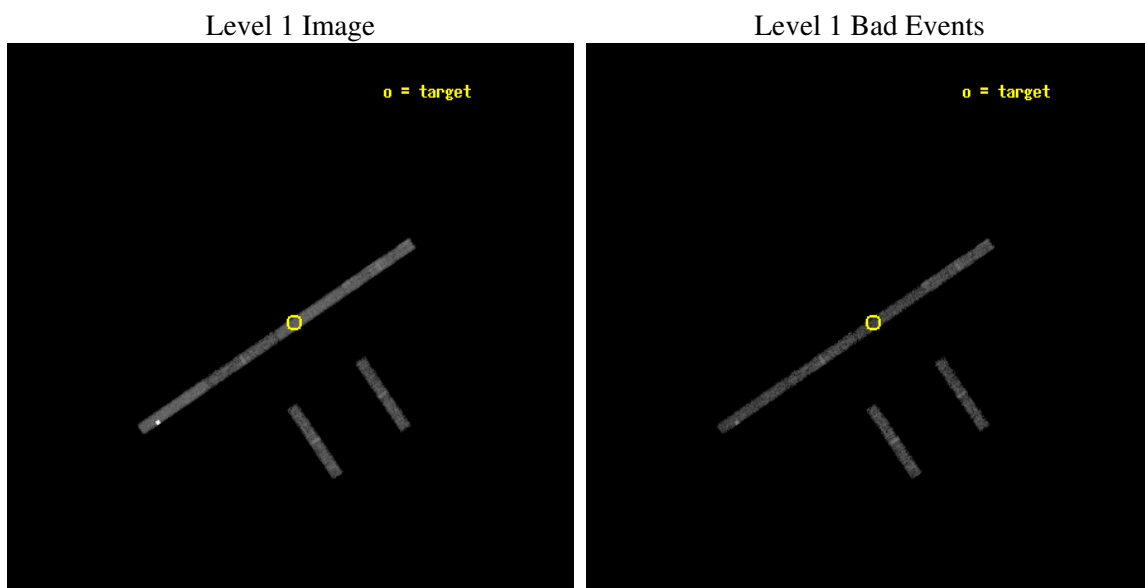
seq_num	300134
obs_id	4540
title	Understanding the nature of supersoft X-ray sources
observer	Dr. Jochen Greiner
object	RXJ 0058.6-7146
dtcycle	0
cycle	P
ra_targ	14.649167
dec_targ	-71.767222
ra_nom	14.671299478215
dec_nom	-71.773979695744
roll_nom	325.85592030089
revision	2
ontime	10121.999827623
livetime	9561.4270205877
ontime2	10121.959790021
ontime3	10121.999827623
ontime5	10121.999827623
ontime6	10121.999827623
ontime7	10121.999827623
ontime8	10121.999827623
l2events	24657



2 OBI

2.1 OBI

2.1.1 Images



2.1.2 Bias

Chip 2

Chip 3

Chip 5



Chip 6

Chip 7

Chip 8



2.1.3 Parameters

obi_num	0
ascdsver	7.6.8
caldbver	3.2.2
date	2006-06-28T01:27:50
revision	2

sched_exp_time	10000.000000
ontime	11634.929174274
ontime2	11634.188134283
ontime3	11634.929174274
ontime5	11634.929174274
ontime6	11634.929174274
ontime7	11634.929174274
ontime8	11634.929174274
l1events	105270

2.1.4 Events

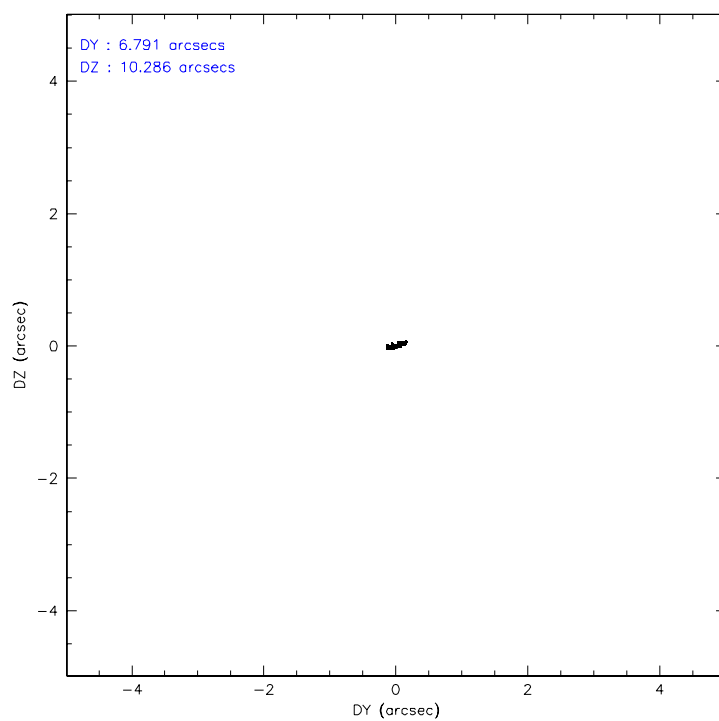
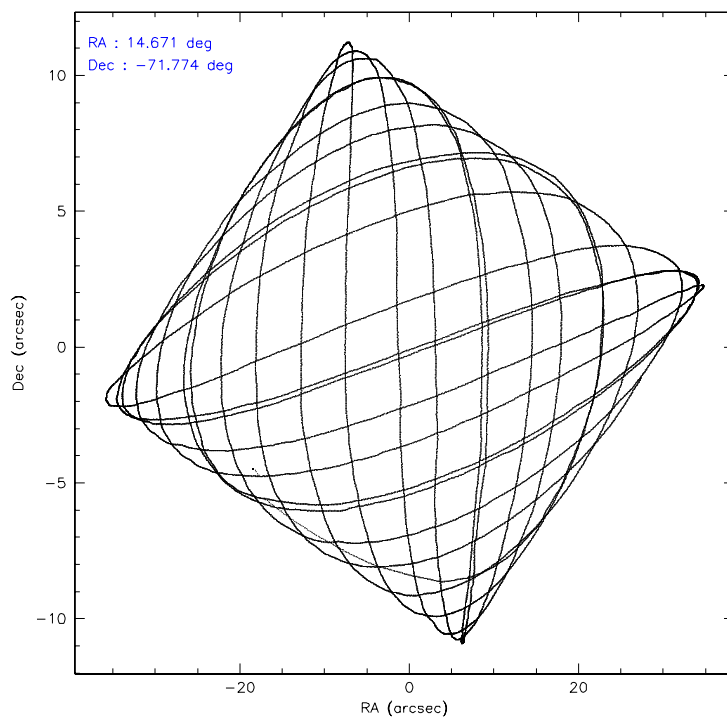
	ccd 2	ccd 3	ccd 5	ccd 6	ccd 7	ccd 8
level 1 events	12477	10902	33354	12450	17222	18865
rejected events	10412	8953	11443	10088	8718	13073
rejected %	83%	82%	34%	81%	50%	69%

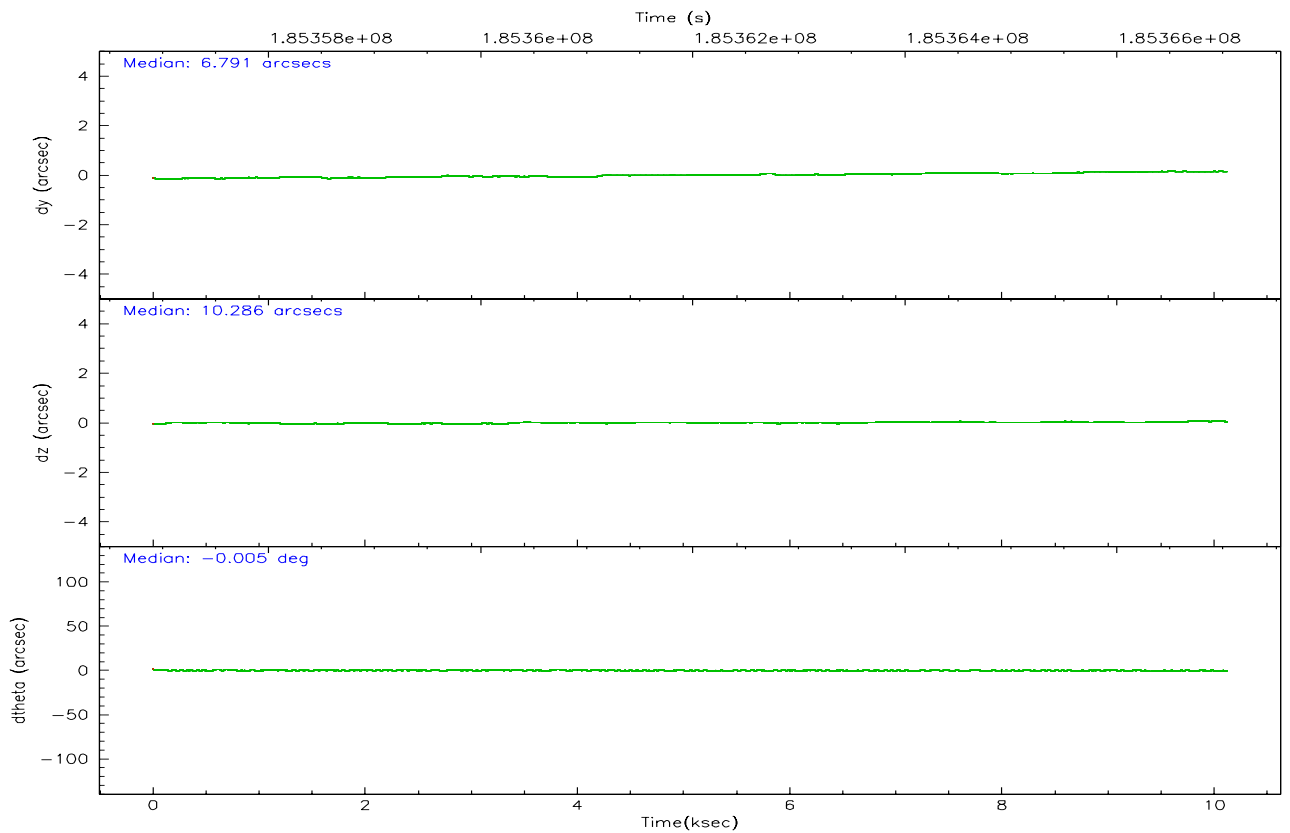
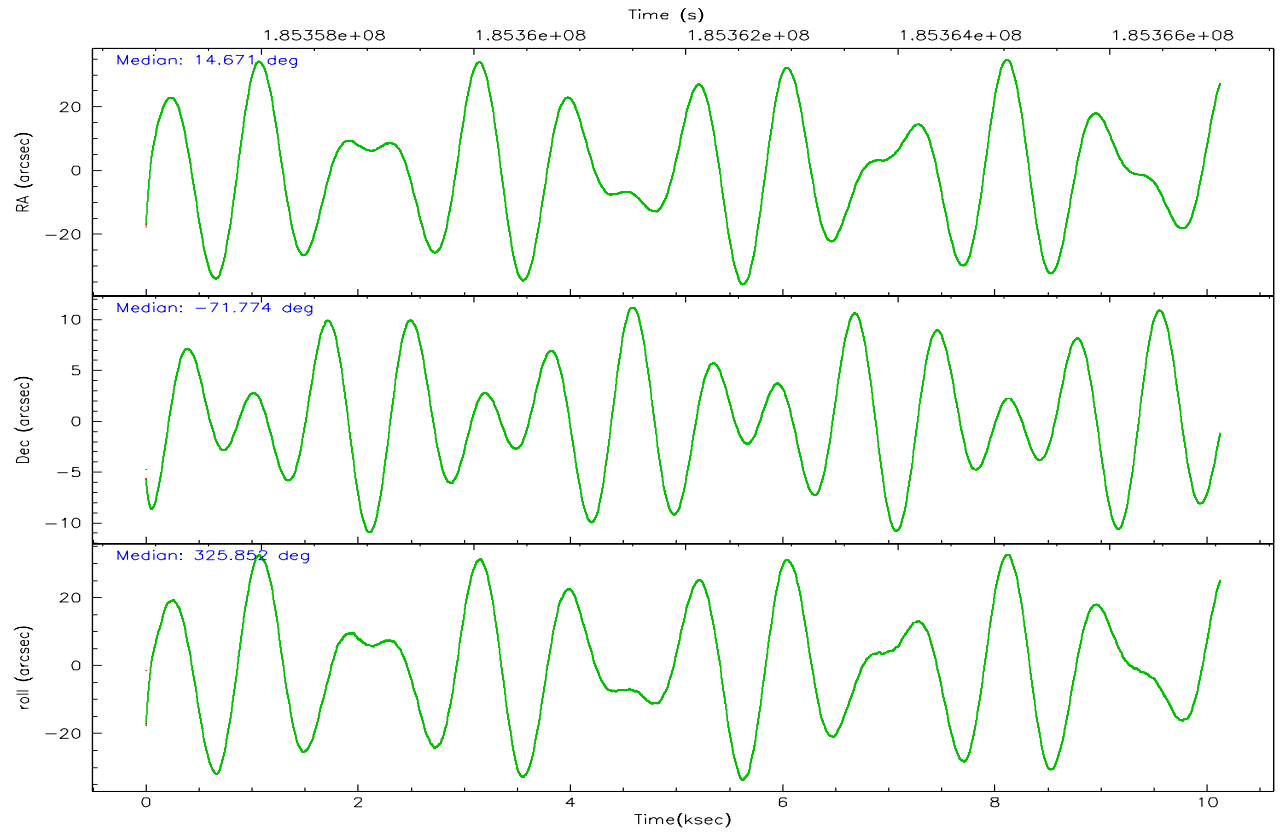
	ccd 2	ccd 3	ccd 5	ccd 6	ccd 7	ccd 8
grade 0 events	1103	1030	11675	1268	883	2843
	8%	9%	35%	10%	5%	15%
grade 1 events	3	2	377	7	11	17
	0%	0%	1%	0%	0%	0%
grade 2 events	494	511	5739	675	2113	956
	3%	4%	17%	5%	12%	5%
grade 3 events	190	188	462	194	686	960
	1%	1%	1%	1%	3%	5%
grade 4 events	182	175	1838	198	684	887
	1%	1%	5%	1%	3%	4%
grade 5 events	355	341	828	390	929	484
	2%	3%	2%	3%	5%	2%
grade 6 events	375	343	5271	357	5208	1091
	3%	3%	15%	2%	30%	5%
grade 7 events	9775	8312	7164	9361	6708	11627
	78%	76%	21%	75%	38%	61%

2.2 Compared Parameters

Parameter	Planned	Actual	Parameter	Planned	Actual
Instrument	ACIS	ACIS	Obspar format version number	6	6
Detector	ACIS-235678	ACIS-235678	Obspar file type	PREDICTED	ACTUAL
Grating	NONE	NONE	Obspar update status	NONE	UPDATED
Data mode	FAINT	FAINT	On-chip summing requested	N	N
Observation mode	POINTING	POINTING	Subarray requested	1/8	1/8
Pointing RA	14.584416	14.67129947821479	Subarray start row	0	449
Pointing Dec	-71.772365	-71.77397969574422	Subarray row count	1024	128
Pointing Roll	325.616770	325.8559203008932	Alternating exposures requested	N	N
SIM focus pos (mm)	-0.684267	-0.6828225247311905	Primary exposure time	0.000000	0.7
SIM defocus (mm)	0	0.001444936568705701			
SIM translation stage pos (mm)	-190.132523	-190.1400660498719			
SIM translation stage offset (mm)	0	0.00754346686406393			
Observation start time	185357036.184000	185355402.27665			
Observation start date	2003-11-16T08:02:52	2003-11-16T07:36:42			
Observation end time	185367036.184000	185367868.32719			
Observation end date	2003-11-16T10:49:32	2003-11-16T11:04:28			
Read mode	TIMED	TIMED			

2.3 Aspect



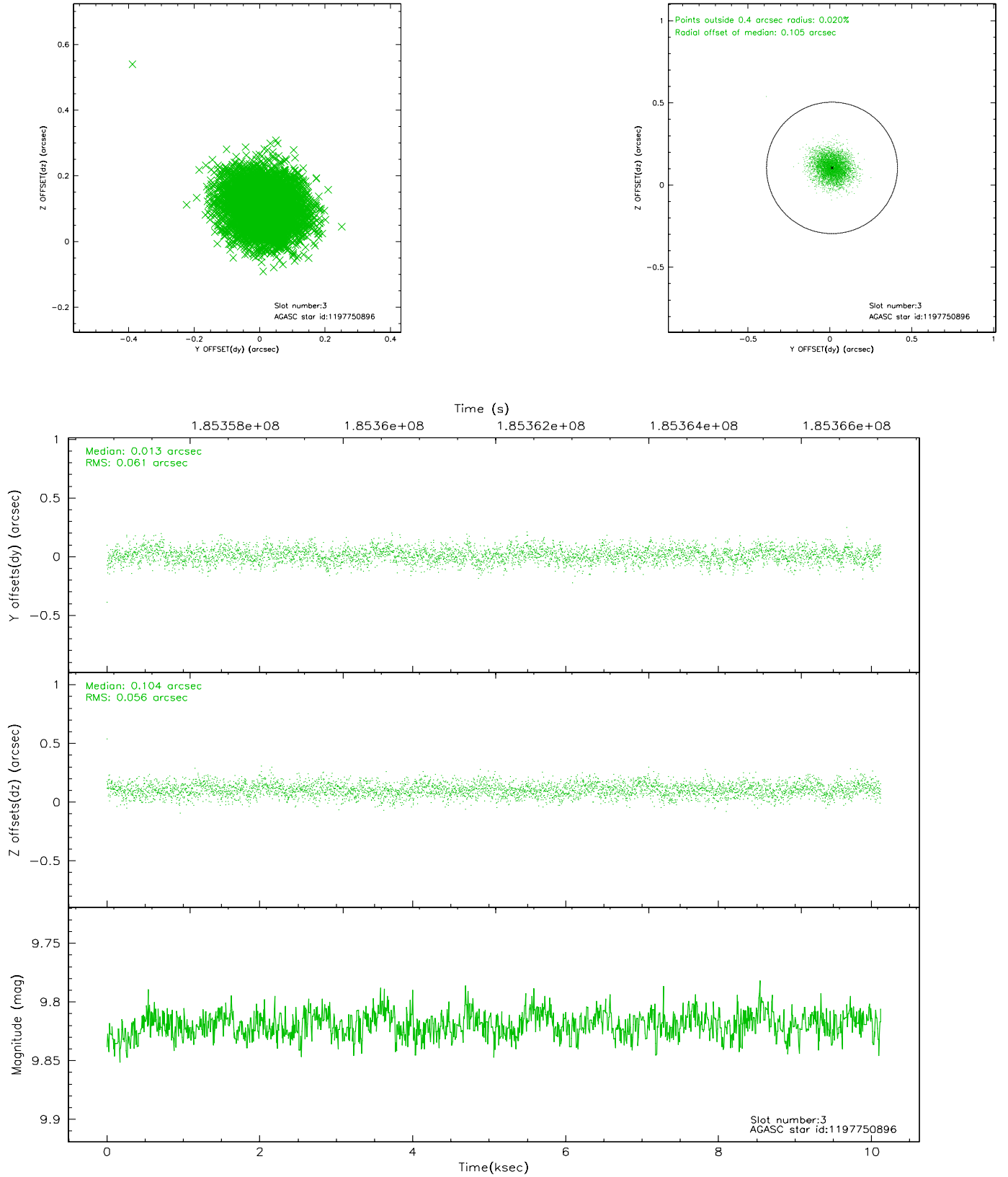


Slot Statistics

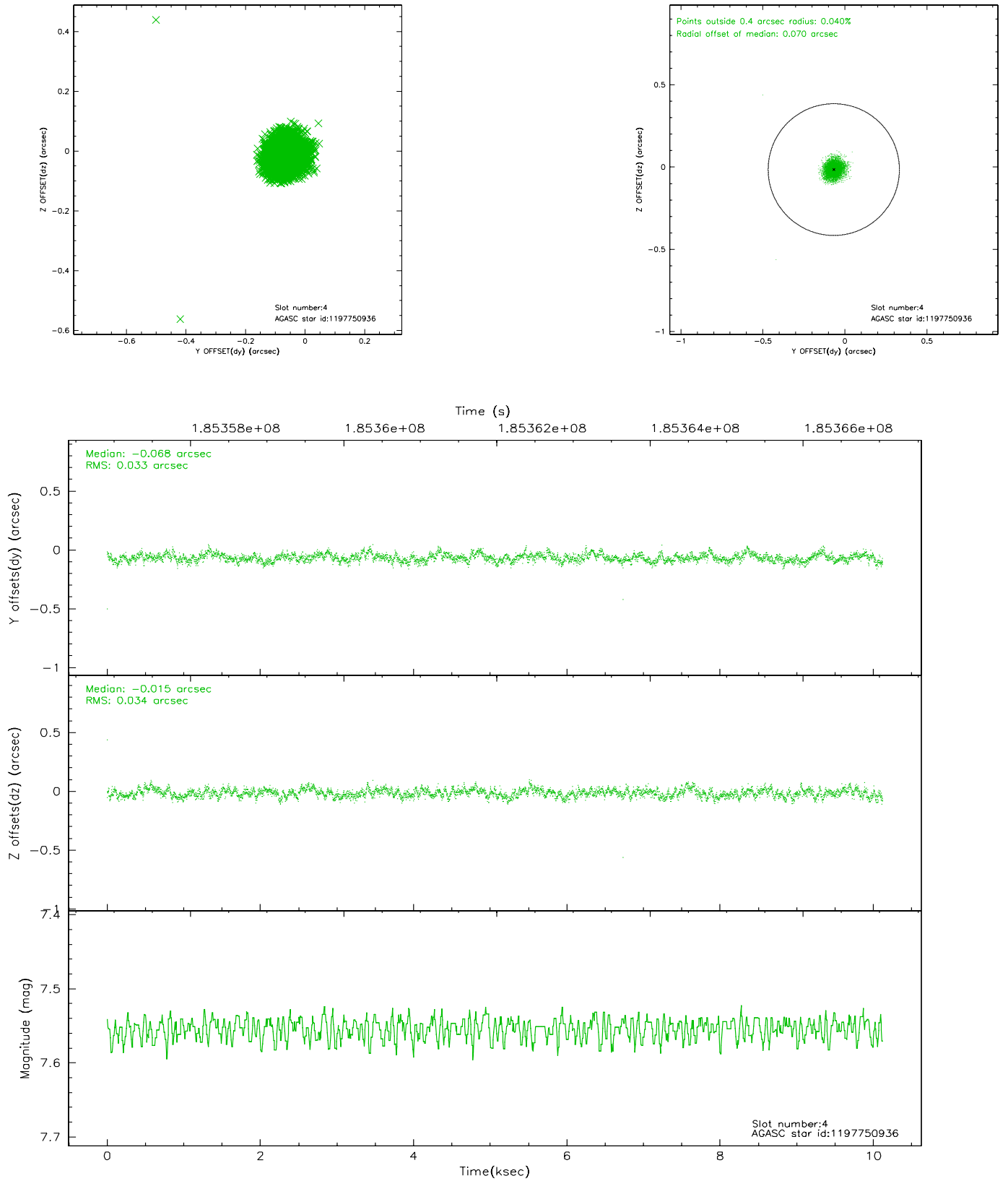
slot	status	id	mag	n_pts	med_dy	med_dz	dr1	dr2	ra	dec	mean_y	mean_z
0	FID	ACIS-S-2	7.10	2469	-0.046	0.004	0.007	0.012	0.000000	0.000000	-759.55	-1731.55
1	FID	ACIS-S-4	7.20	2470	0.034	0.021	0.005	0.009	0.000000	0.000000	2153.53	176.46
2	FID	ACIS-S-5	7.23	2469	-0.019	-0.016	0.007	0.011	0.000000	0.000000	-1811.73	170.61
3	GUIDE	1197750896	9.82	4934	0.013	0.104	0.088	0.143	12.910875	-71.532544	-2047.17	-386.98
4	GUIDE	1197750936	7.55	4939	-0.068	-0.015	0.049	0.079	15.387940	-71.549550	305.73	1173.76
5	GUIDE	1197885328	7.22	4939	0.002	-0.079	0.040	0.067	16.283090	-71.733943	1519.16	1174.81
6	GUIDE	1197751048	8.58	4939	-0.072	-0.112	0.077	0.119	12.451586	-72.130600	-1191.61	-2428.94
7	GUIDE	1197884712	8.32	4938	0.124	0.103	0.072	0.109	16.087398	-72.252690	2349.28	-512.95

2.4 Star Slots

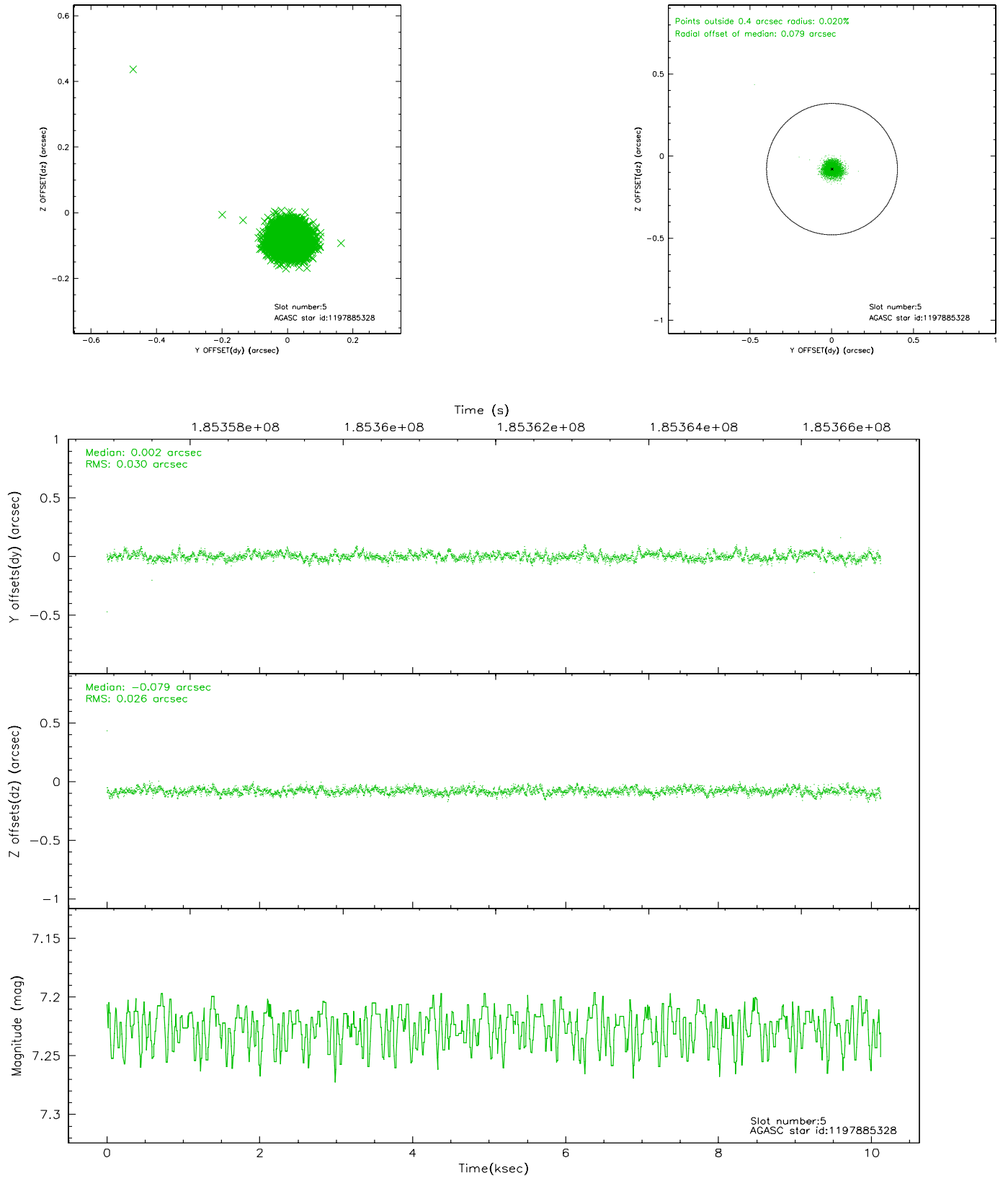
2.4.1 Slot 3



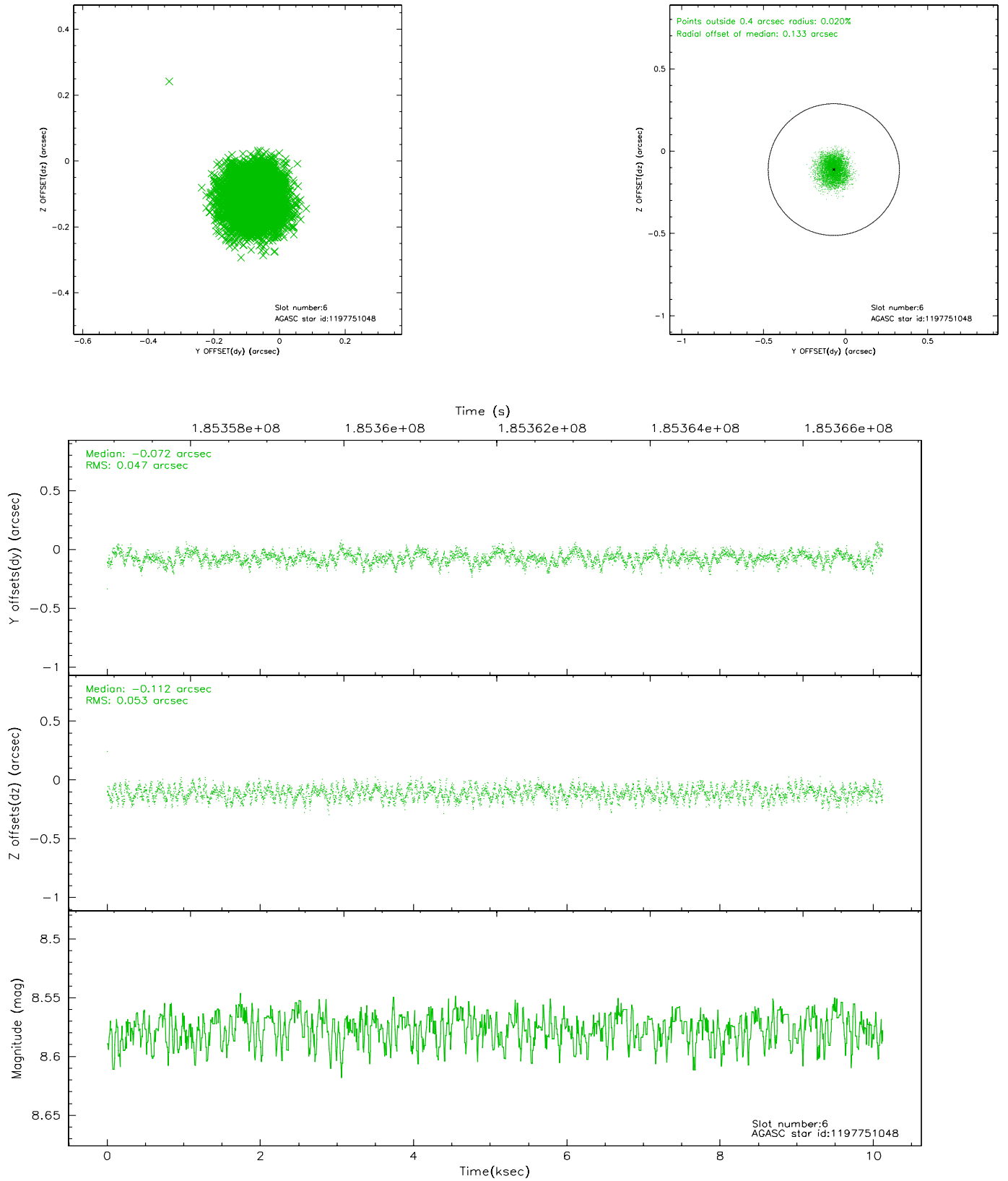
2.4.2 Slot 4



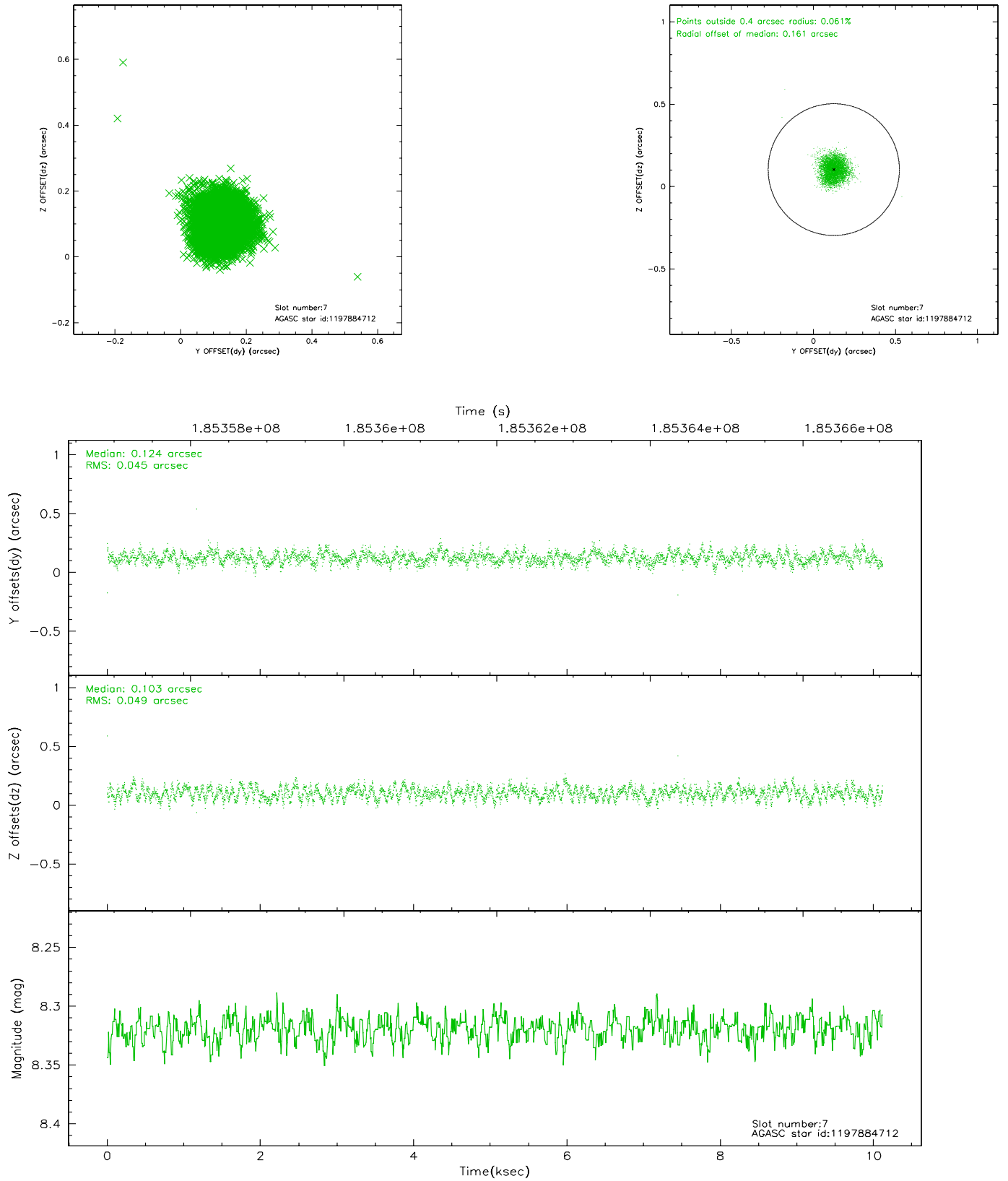
2.4.3 Slot 5



2.4.4 Slot 6

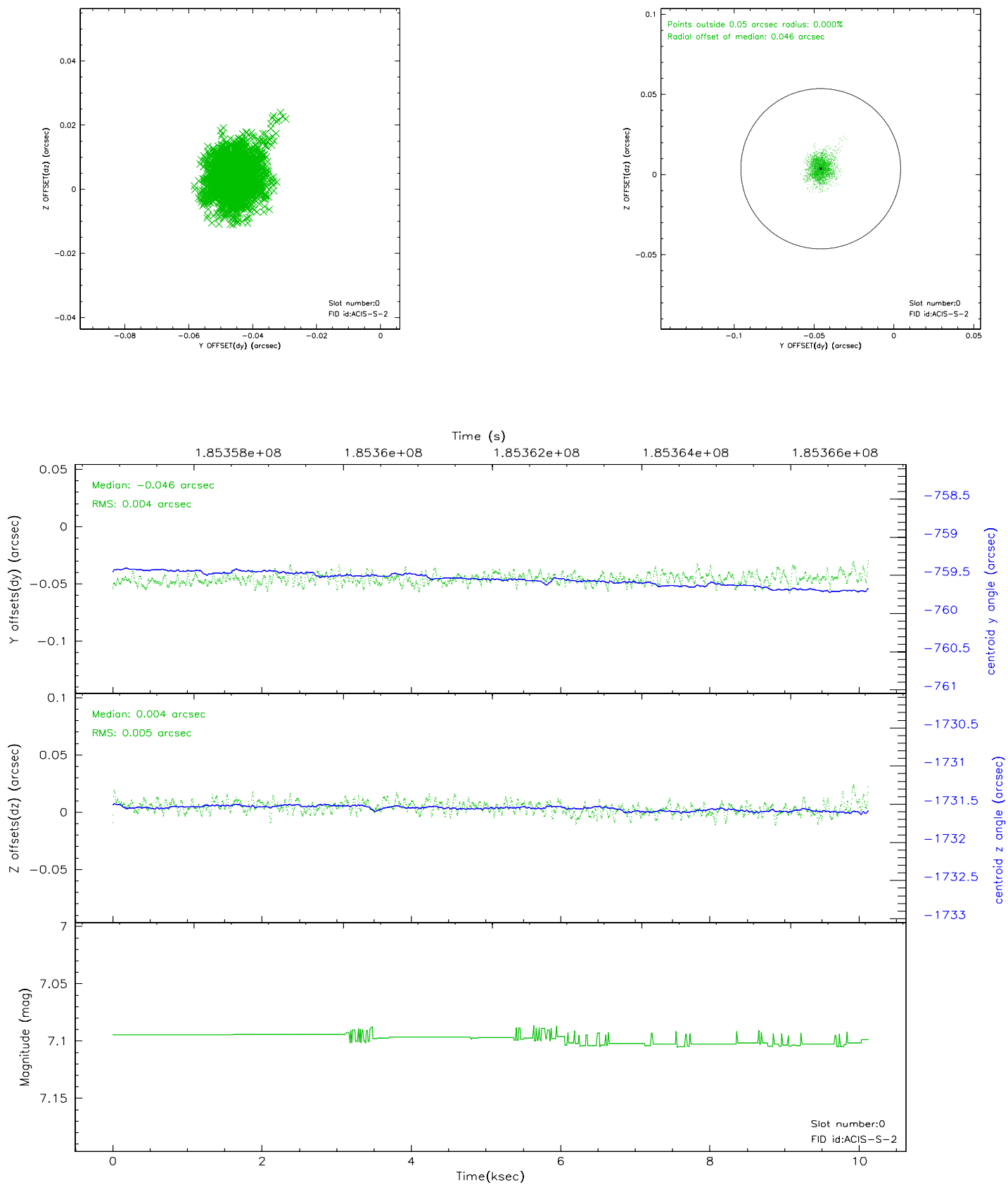


2.4.5 Slot 7

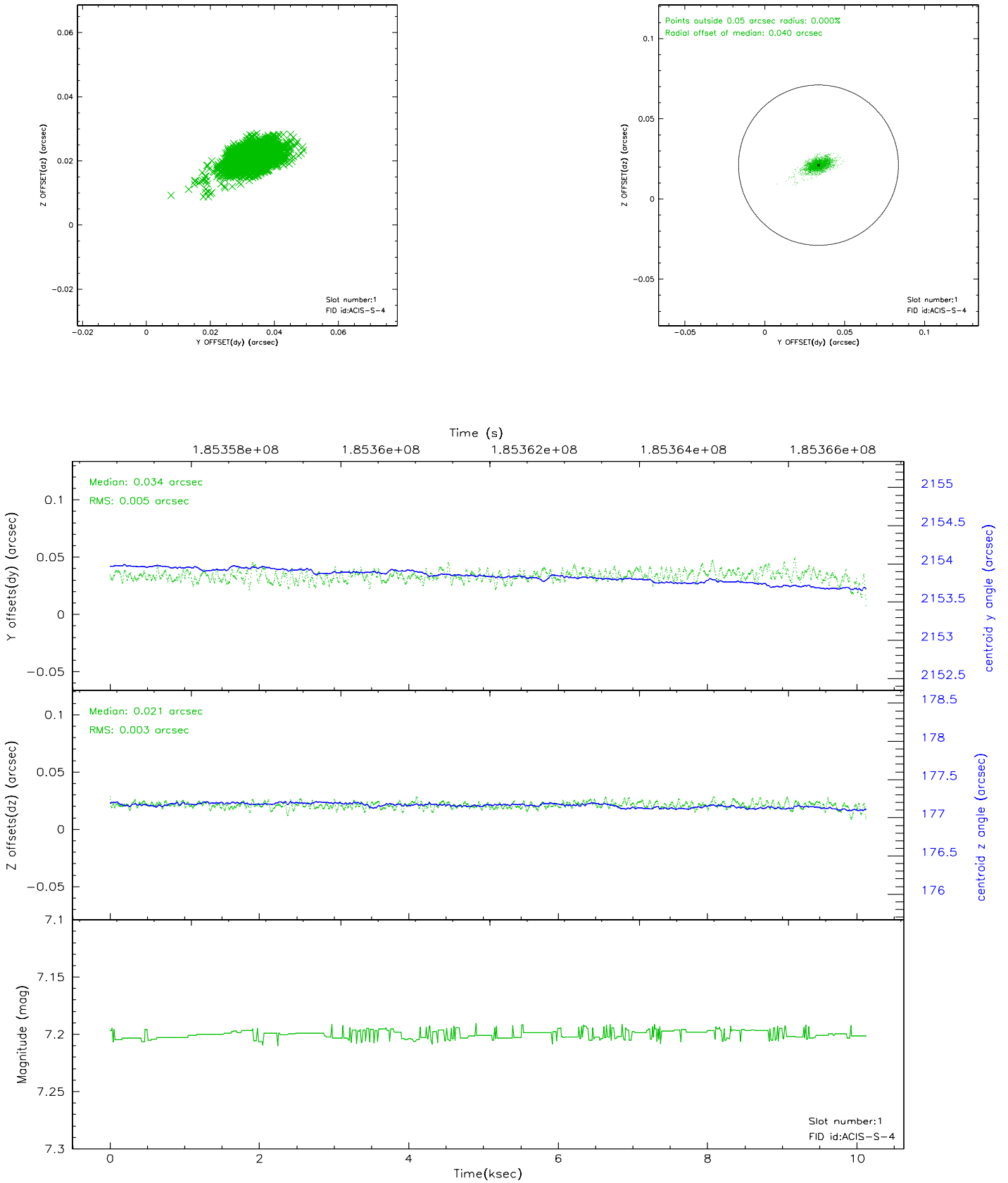


2.5 FID Slots

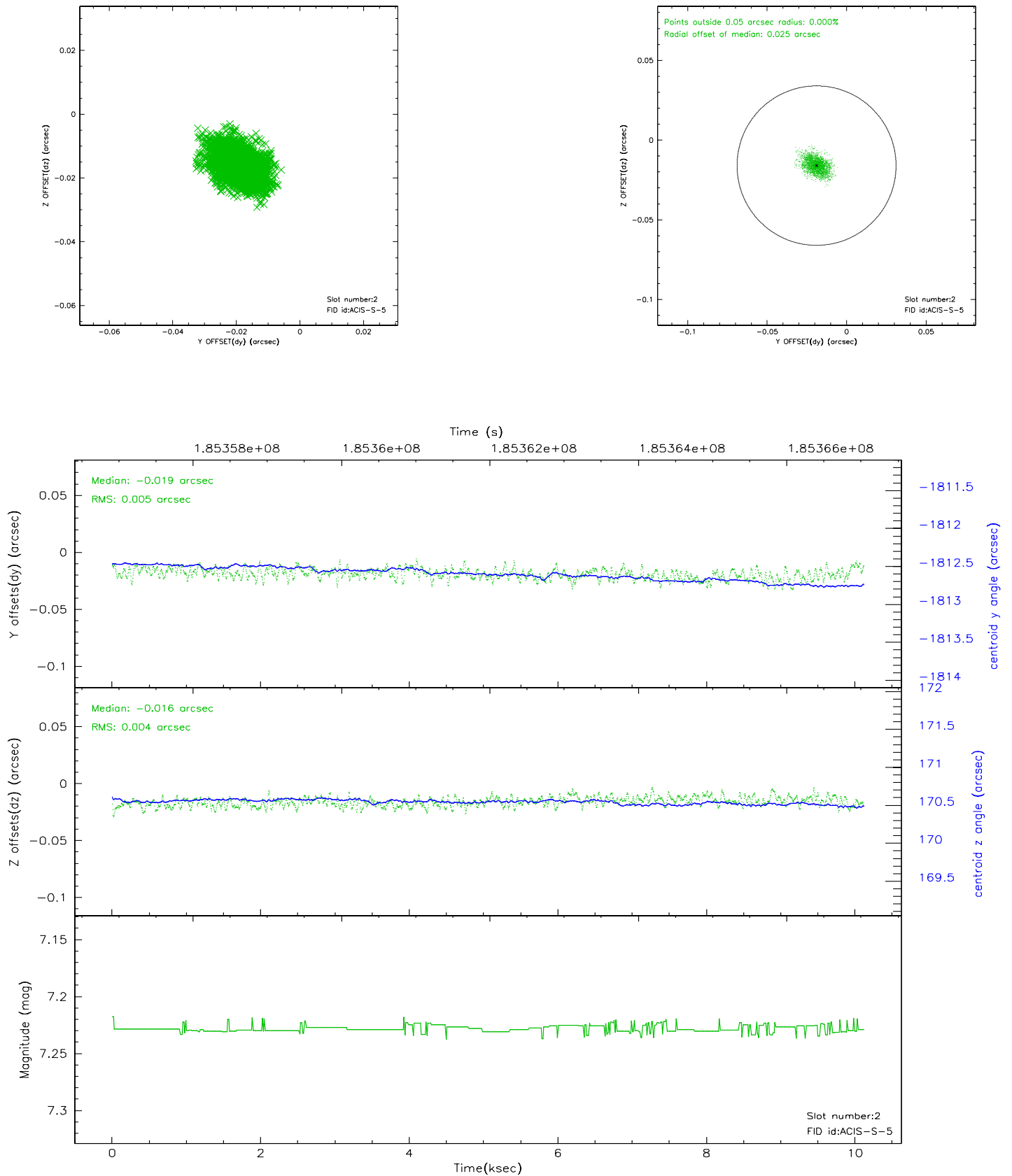
2.5.1 Slot 0



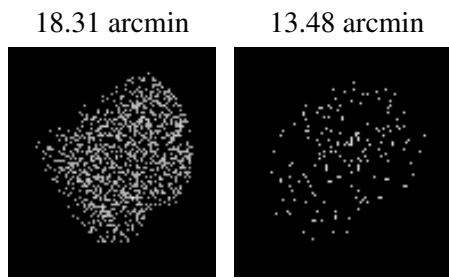
2.5.2 Slot 1



2.5.3 Slot 2



3 Point Sources



A Summary

A.1 Status

V&V Scientist	Beth Sundheim
V&V Date (YYYY-MM-DD)	2006.06.28
V&V Edition	1
V&V Disposition and Status	OK
V&V Charge Time	10.121

A.2 Comments