

V&V Reference Report

L2 ASCDS Version : 8.4.5

Observation 4539 - L2 Version 3
Chandra X-Ray Center

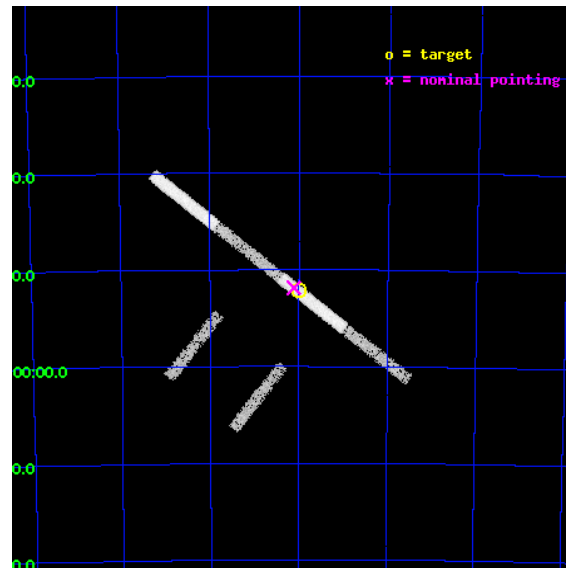
L2 Processing Date : Nov 8 2012

Contents

1	Front	2
2	OBI	3
2.1	OBI	3
2.1.1	Images	3
2.1.2	Bias	3
2.1.3	Parameters	4
2.1.4	Events	4
2.2	Compared Parameters	5
2.3	Aspect	6
2.4	Star Slots	9
2.4.1	Slot 3	9
2.4.2	Slot 4	10
2.4.3	Slot 5	11
2.4.4	Slot 6	12
2.4.5	Slot 7	13
2.5	FID Slots	14
2.5.1	Slot 0	14
2.5.2	Slot 1	15
2.5.3	Slot 2	16
A	Summary	17
A.1	Status	17
A.2	Comments	17

1 Front

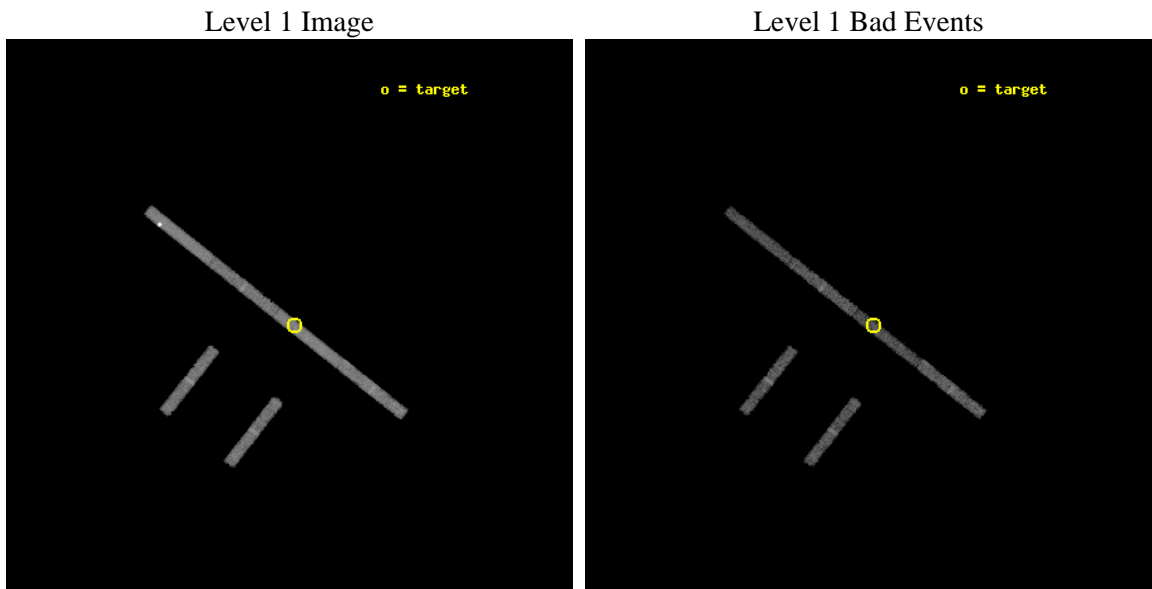
seq_num	300133	Sequence number
obs_id	4539	Observation id
title	Understanding the nature of supersoft X-ray sources	Proposal title
observer	Dr. Jochen Greiner	Principal investigator
object	RXJ 0550.0-7151	Source name
dtcycle	0	
cycle	P	events from which exps? Prim/Second/Both
ra_targ	87.500833	Observer's specified target RA [deg]
dec_targ	-71.869167	Observer's specified target Dec [deg]
ra_nom	87.528353987125	Nominal RA [deg]
dec_nom	-71.864594614712	Nominal Dec [deg]
roll_nom	38.288758928854	Nominal Roll [deg]
revision	3	Processing version of data
ontime	9762.8998337388	Sum of GTIs [s]
livetime	9222.2145681976	Livetime [s]
ontime2	9762.8998337388	Sum of GTIs [s]
ontime3	9762.8998337388	Sum of GTIs [s]
ontime5	9762.8998337388	Sum of GTIs [s]
ontime6	9762.8998337388	Sum of GTIs [s]
ontime7	9762.8998337388	Sum of GTIs [s]
ontime8	9762.8998337388	Sum of GTIs [s]
l2events	21593	Number of level 2 events



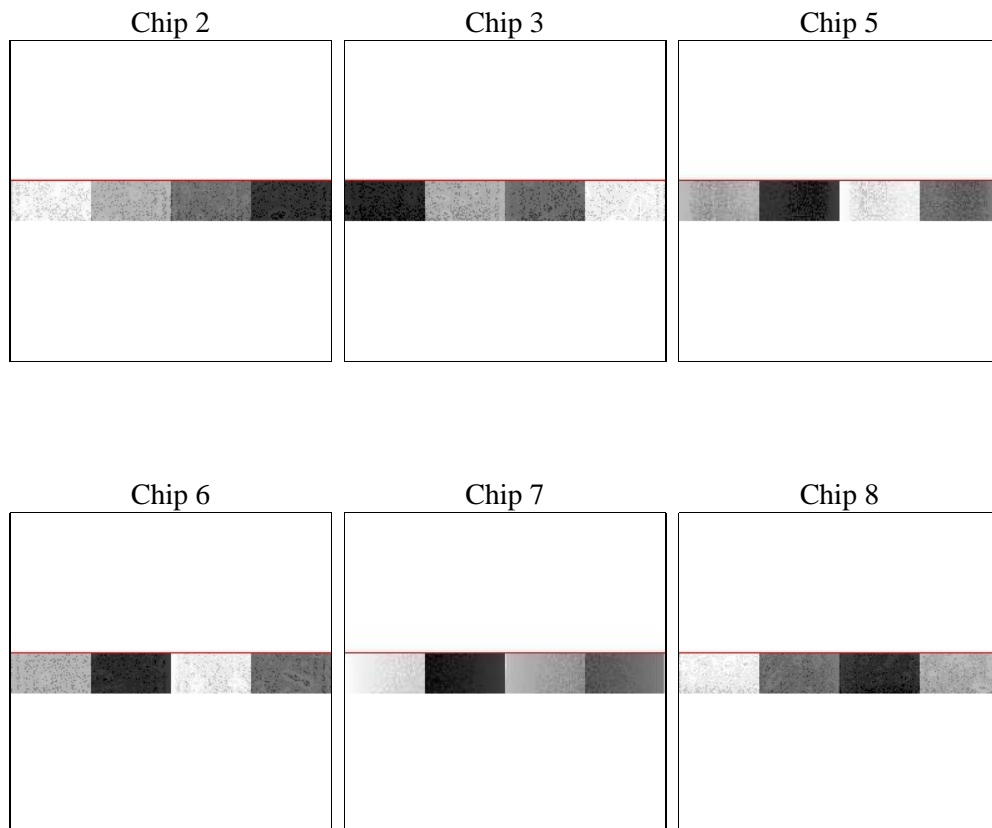
2 OBI

2.1 OBI

2.1.1 Images



2.1.2 Bias



2.1.3 Parameters

obi_num	0	Obi number	sched_exp_time	9999.003000	[s] Scheduled observation exposure time
ascdsver	8.4.5	Processing system revision	ontime	9762.8998337388	Sum of GTIs [s]
caldsver	4.5.2	 	ontime2	9762.8998337388	Sum of GTIs [s]
date	2012-11-08T02:07:39	Date and time of file creation	ontime3	9762.8998337388	Sum of GTIs [s]
revision	3	Processing version of data	ontime5	9762.8998337388	Sum of GTIs [s]
			ontime6	9762.8998337388	Sum of GTIs [s]
			ontime7	9762.8998337388	Sum of GTIs [s]
			ontime8	9762.8998337388	Sum of GTIs [s]
			l1events	87075	Number of level 1 events

2.1.4 Events

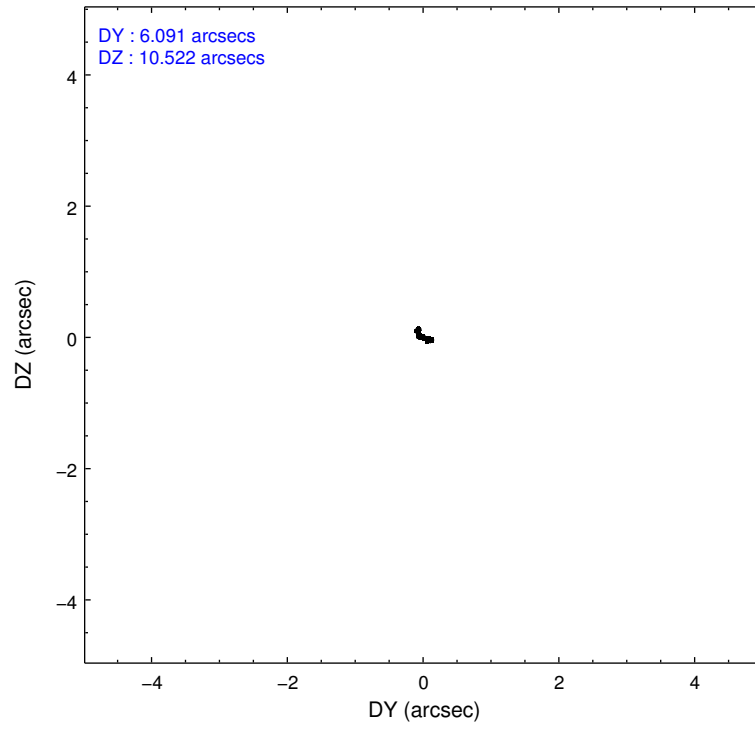
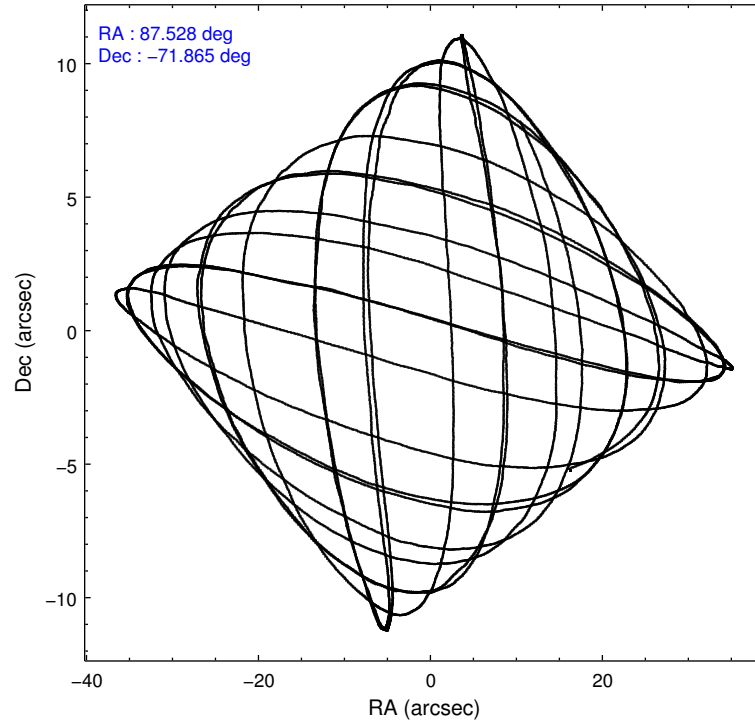
	ccd 2	ccd 3	ccd 5	ccd 6	ccd 7	ccd 8
level 1 events	10309	9981	27739	10747	14519	13780
rejected events	8844	8597	6425	9015	6322	10939
rejected %	85%	86%	23%	83%	43%	79%

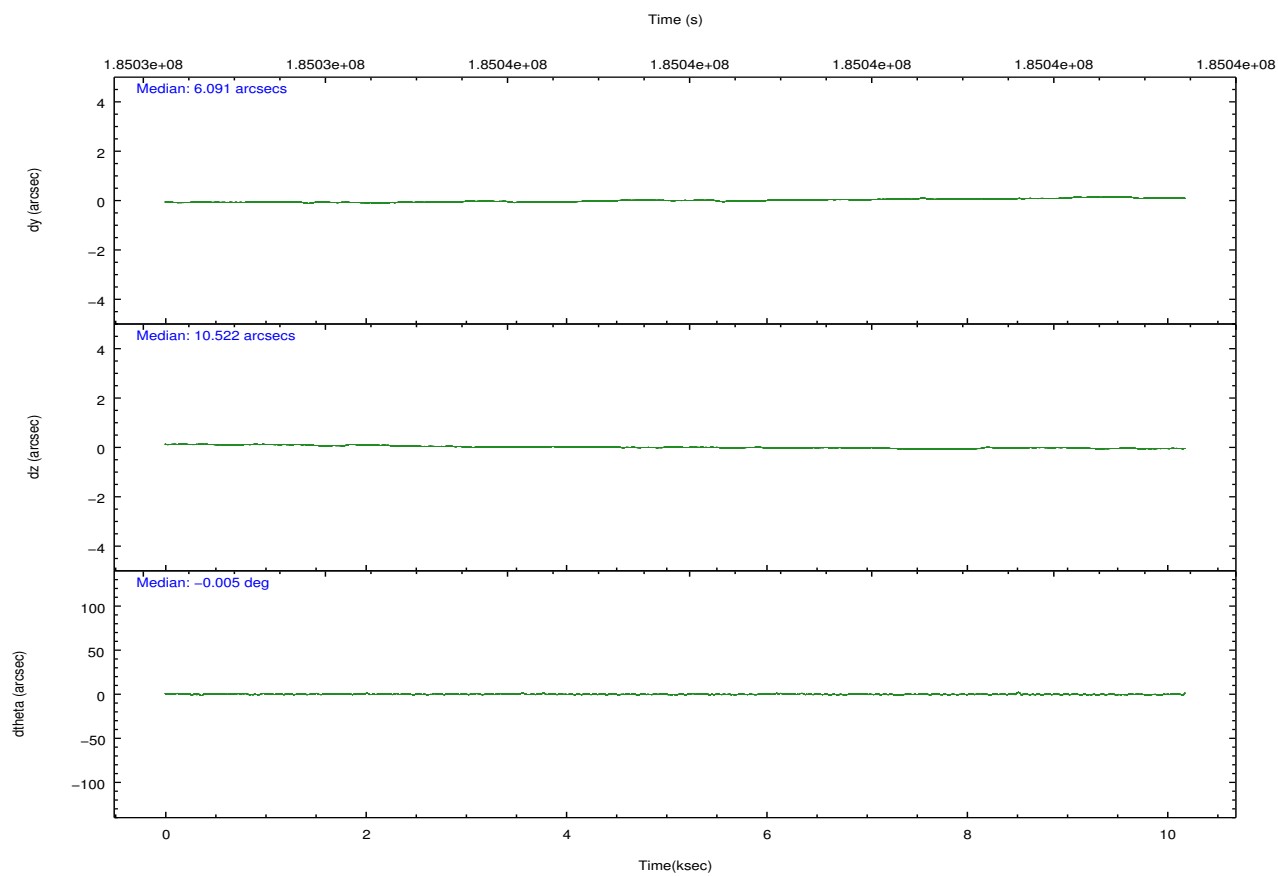
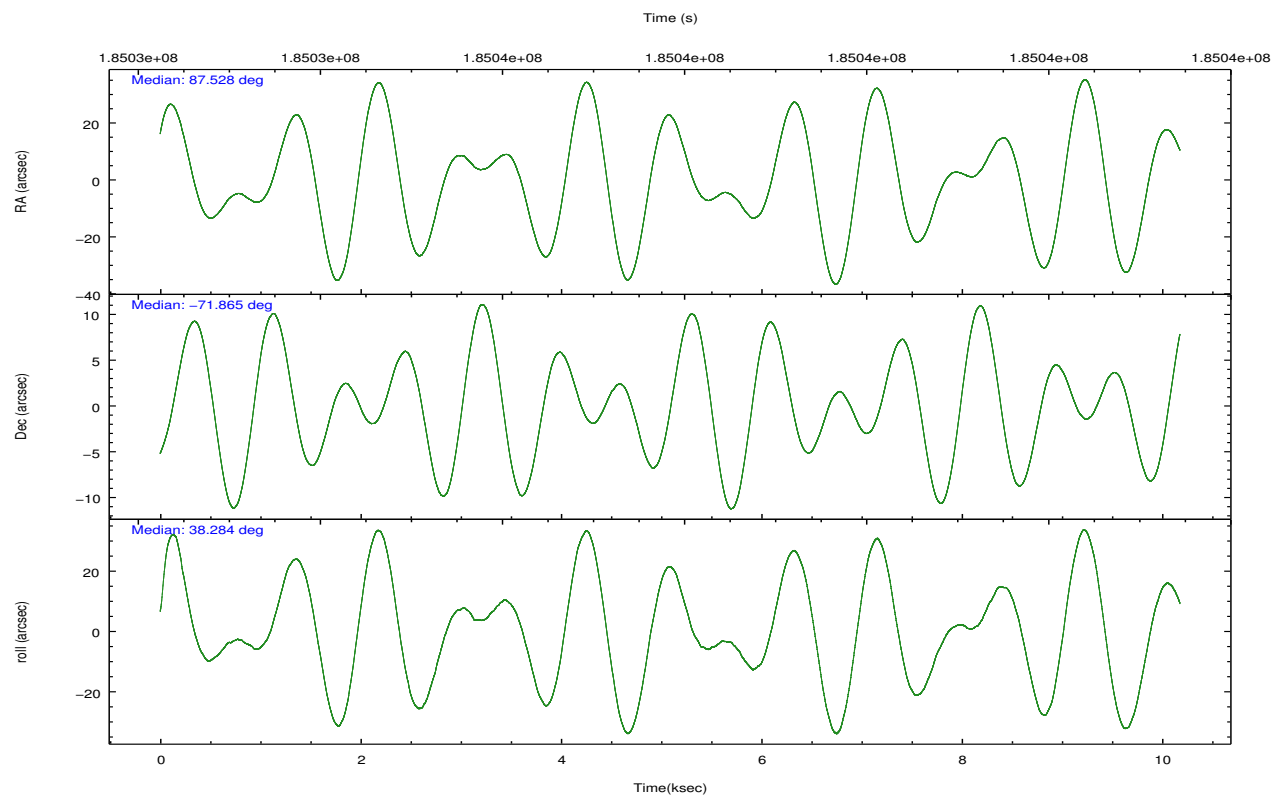
	ccd 2	ccd 3	ccd 5	ccd 6	ccd 7	ccd 8
grade 0 events	692	678	12982	894	880	1081
	6%	6%	46%	8%	6%	7%
grade 1 events	5	3	25	4	15	2
	0%	0%	0%	0%	0%	0%
grade 2 events	250	237	3139	303	1529	531
	2%	2%	11%	2%	10%	3%
grade 3 events	177	181	607	170	753	265
	1%	1%	2%	1%	5%	1%
grade 4 events	186	140	659	155	760	240
	1%	1%	2%	1%	5%	1%
grade 5 events	321	293	1013	319	1059	425
	3%	2%	3%	2%	7%	3%
grade 6 events	161	148	3934	211	4279	724
	1%	1%	14%	1%	29%	5%
grade 7 events	8517	8301	5380	8691	5244	10512
	82%	83%	19%	80%	36%	76%

2.2 Compared Parameters

Parameter	Planned	Actual	Parameter	Planned	Actual
Instrument	ACIS	ACIS	Obspar format version number	7	7
Detector	ACIS-235678	ACIS-235678	Obspar file type	PREDICTED	ACTUAL
Grating	NONE	NONE	Obspar update status	NONE	UPDATED
Data mode	FAINT	FAINT	Number of optional ACIS chips dropped	0	0
Observation mode	POINTING	POINTING	On-chip summing requested	N	N
[deg] Pointing RA	87.496943	87.5283539871249	Subarray requested	CUSTOM	1/8
[deg] Pointing Dec	-71.890037	-71.86459461471236	Subarray start row	449	449
[deg] Pointing Roll	38.102280	38.28875892885448	Subarray row count	128	128
[mm] SIM focus pos	-0.684267	-0.6828225247311905	Alternating exposures requested	N	N
[mm] SIM defocus	0	0.001444936568705701	[s] Primary exposure time	0.000000	0.7
[mm] SIM translation stage pos	-190.132523	-190.1400660498719			
[mm] SIM translation stage offset	0	0.00754346686406393			
[s] Observation start time (MET)	185032925.184000	185032489.33765			
Observation start date	2003-11-12T14:01:01	2003-11-12T13:54:49			
[s] Observation end time (MET)	185042924.184000	185043238.51312			
Observation end date	2003-11-12T16:47:40	2003-11-12T16:53:58			
Read mode	TIMED	TIMED			

2.3 Aspect



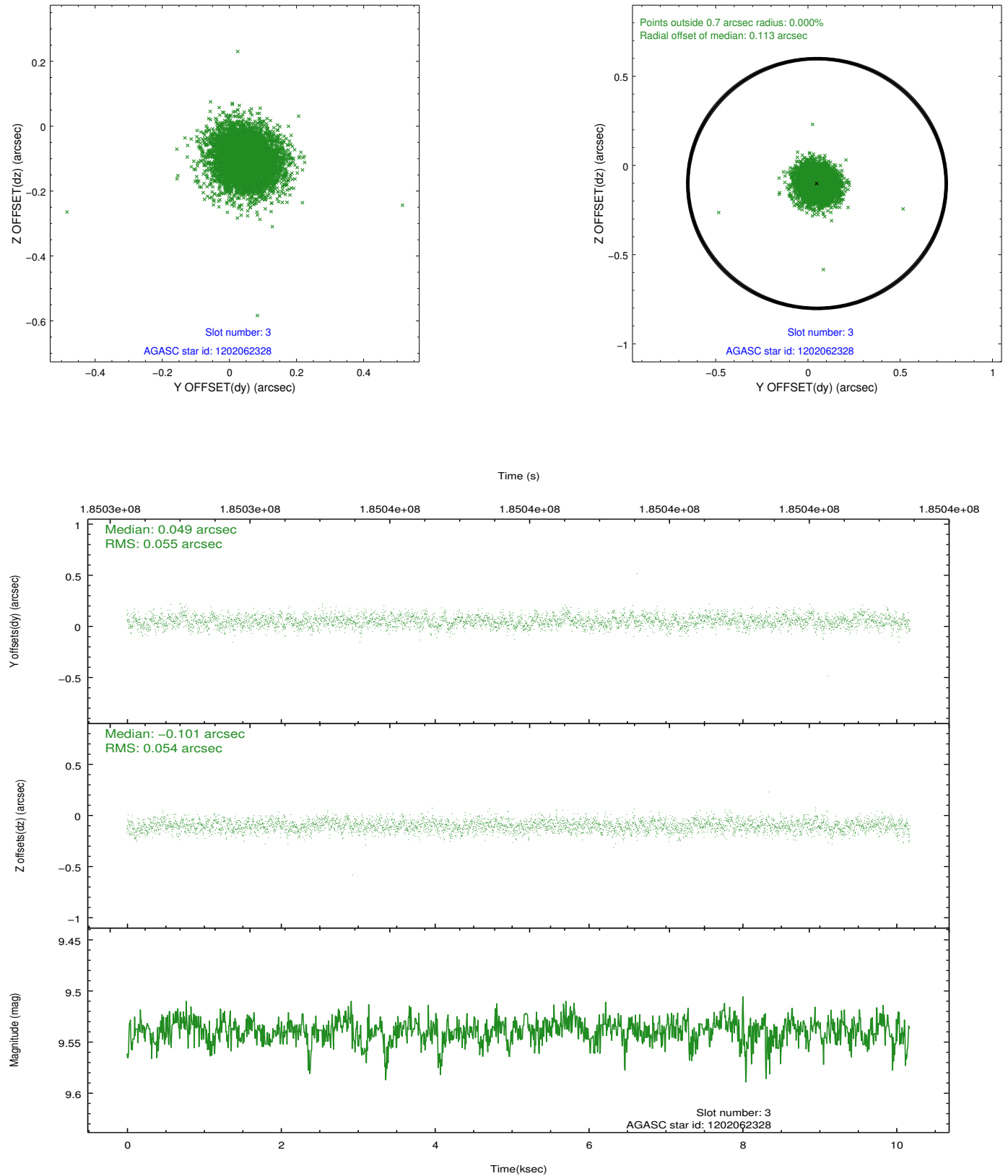


Slot Statistics

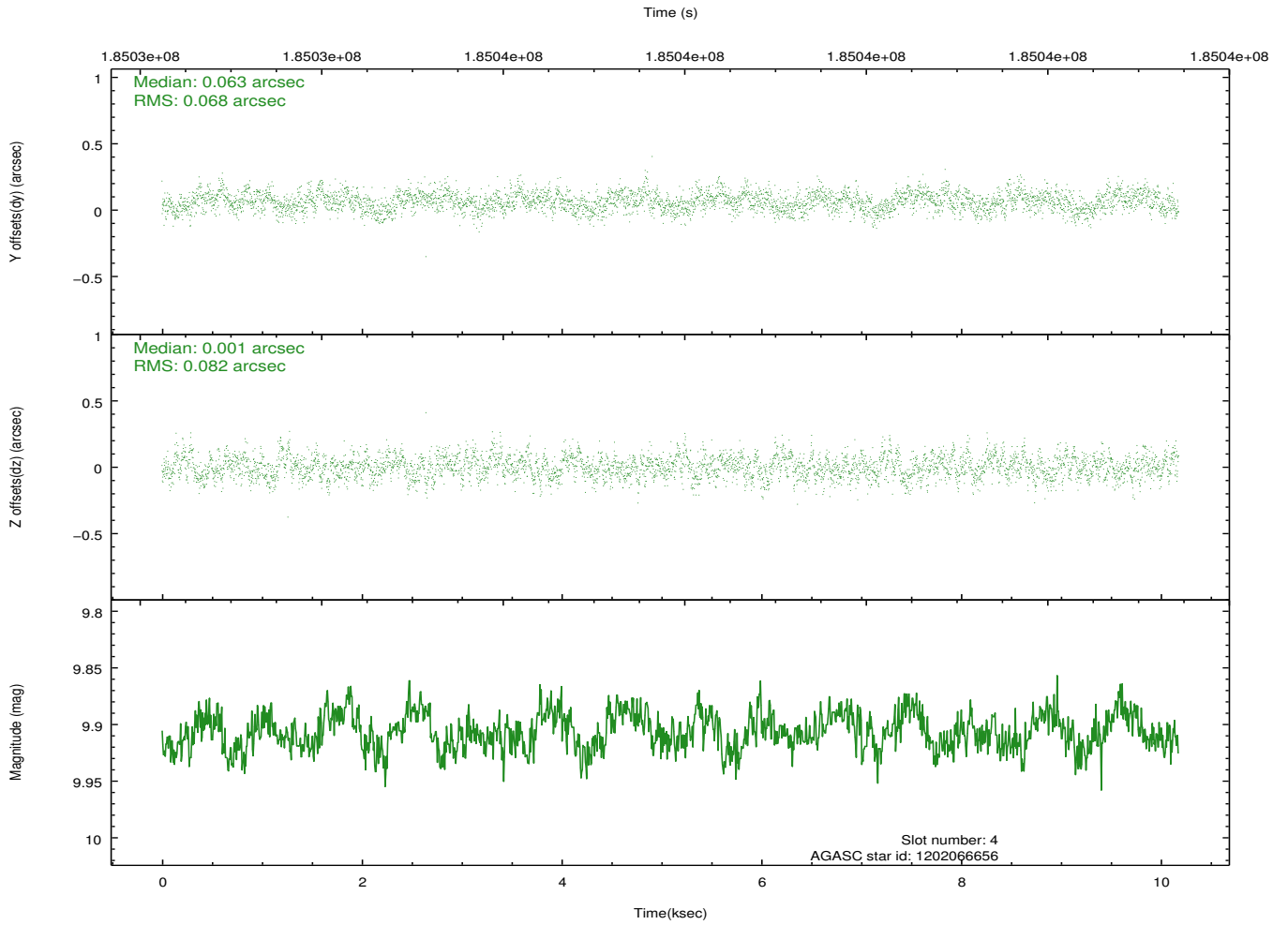
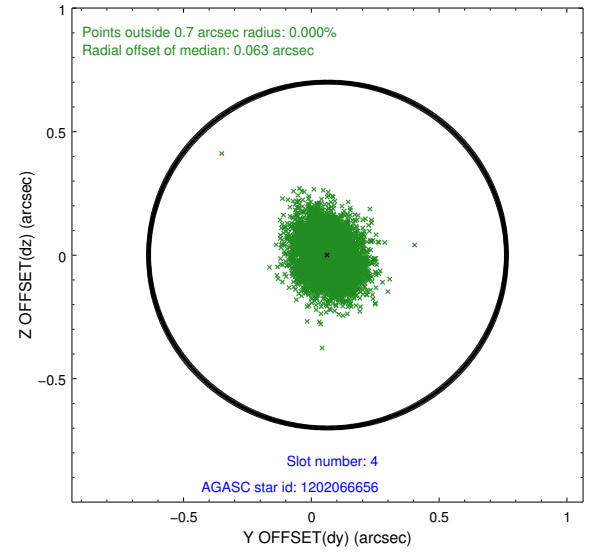
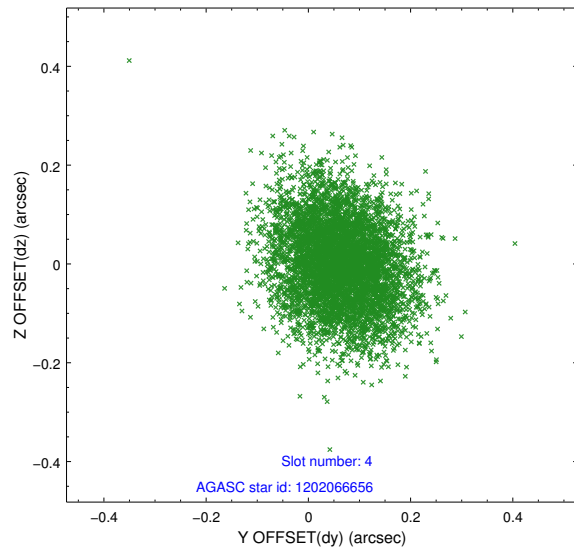
slot	status	id	mag	n_pts	med_dy	med_dz	dr1	dr2	ra	dec	mean_y	mean_z
0	FID	ACIS-S-2	7.10	2482	-0.064	-0.015	0.007	0.012	0.000000	0.000000	-758.86	-1731.82
1	FID	ACIS-S-4	7.21	2483	0.073	0.035	0.005	0.010	0.000000	0.000000	2154.29	176.21
2	FID	ACIS-S-5	7.23	2483	-0.041	-0.011	0.007	0.012	0.000000	0.000000	-1811.04	170.37
3	GUIDE	1202062328	9.54	4960	0.049	-0.101	0.081	0.130	87.078008	-71.975897	-558.57	43.54
4	GUIDE	1202066656	9.91	4966	0.063	0.001	0.114	0.184	88.773544	-72.273960	239.36	-1962.37
5	GUIDE	1202068104	9.82	4963	-0.005	0.070	0.104	0.168	86.710730	-72.350514	-1701.31	-779.59
6	GUIDE	1202072464	9.44	4964	0.004	0.104	0.090	0.148	86.698095	-71.603515	-81.60	1367.18
7	GUIDE	1202070752	6.40	4964	-0.111	-0.073	0.052	0.087	86.950556	-72.702251	-2265.92	-1941.81

2.4 Star Slots

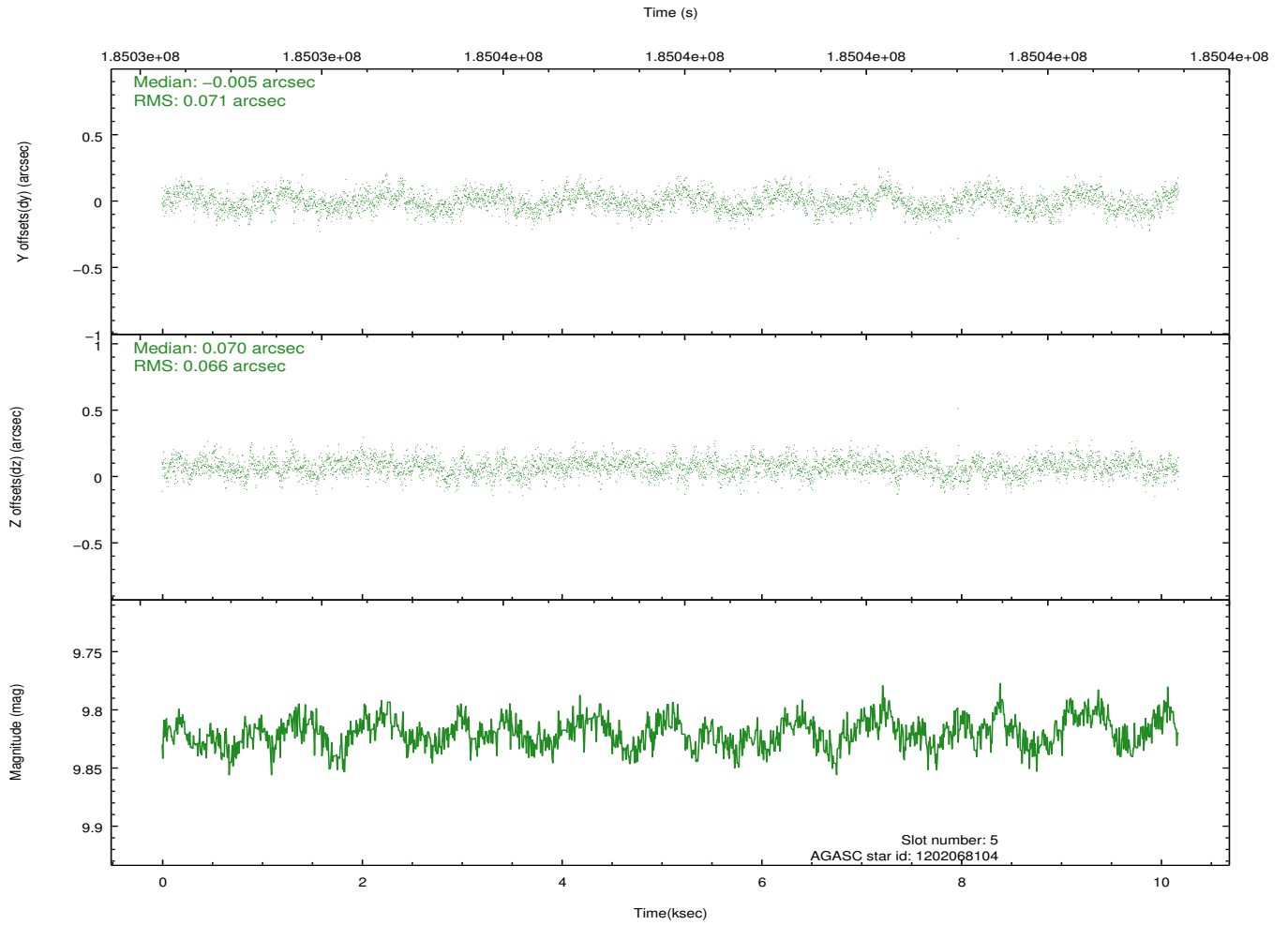
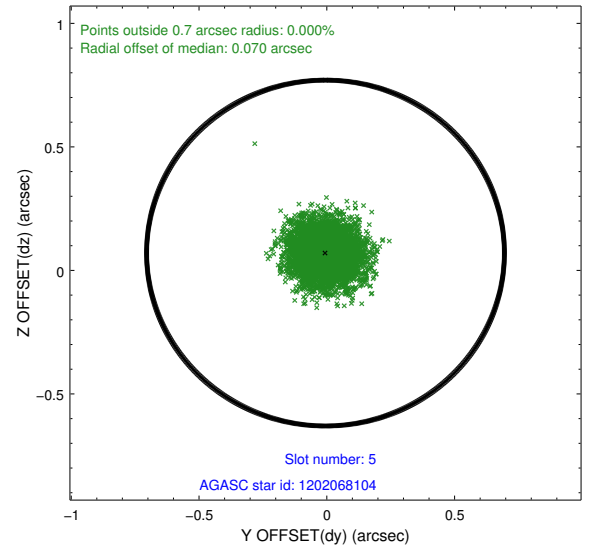
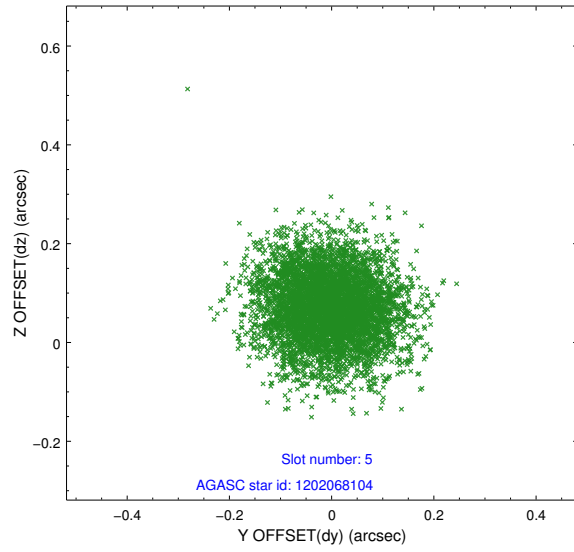
2.4.1 Slot 3



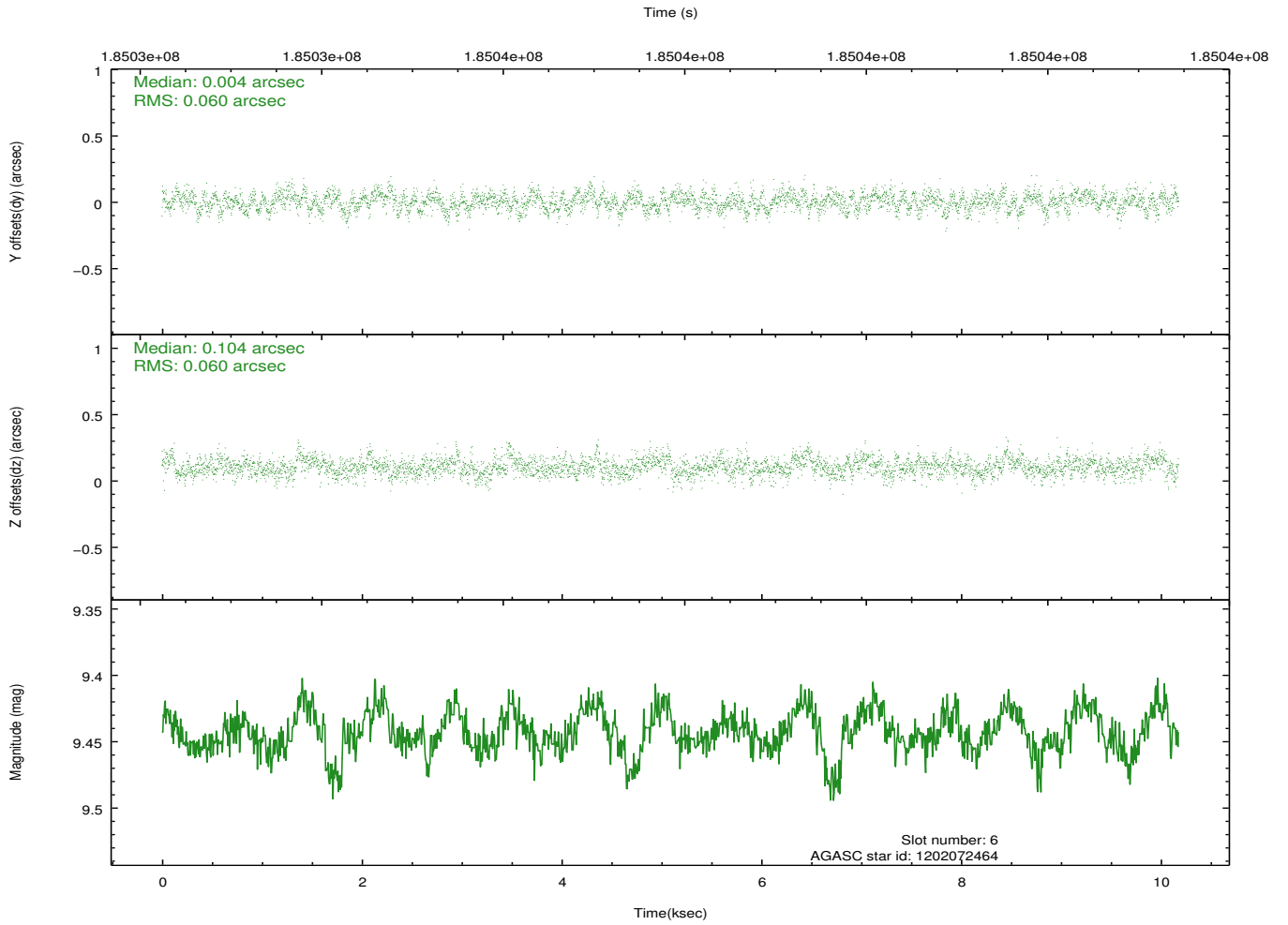
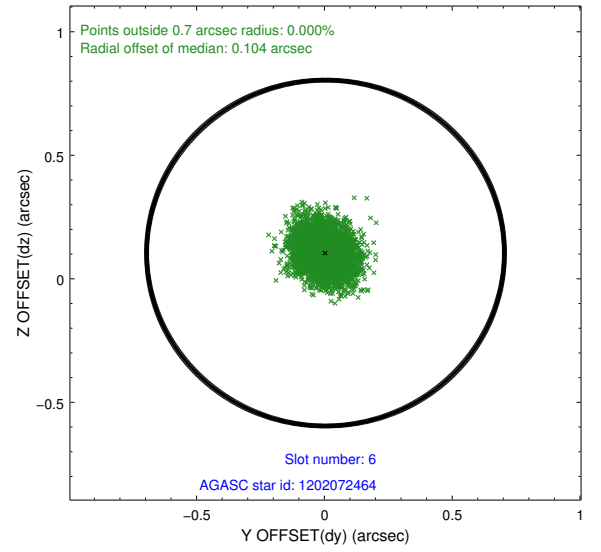
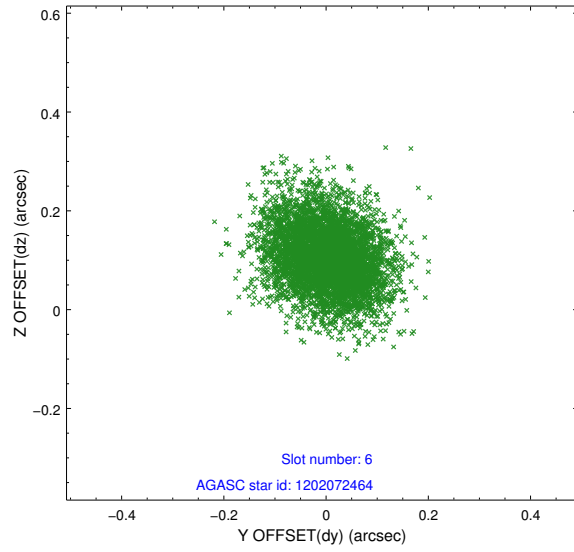
2.4.2 Slot 4



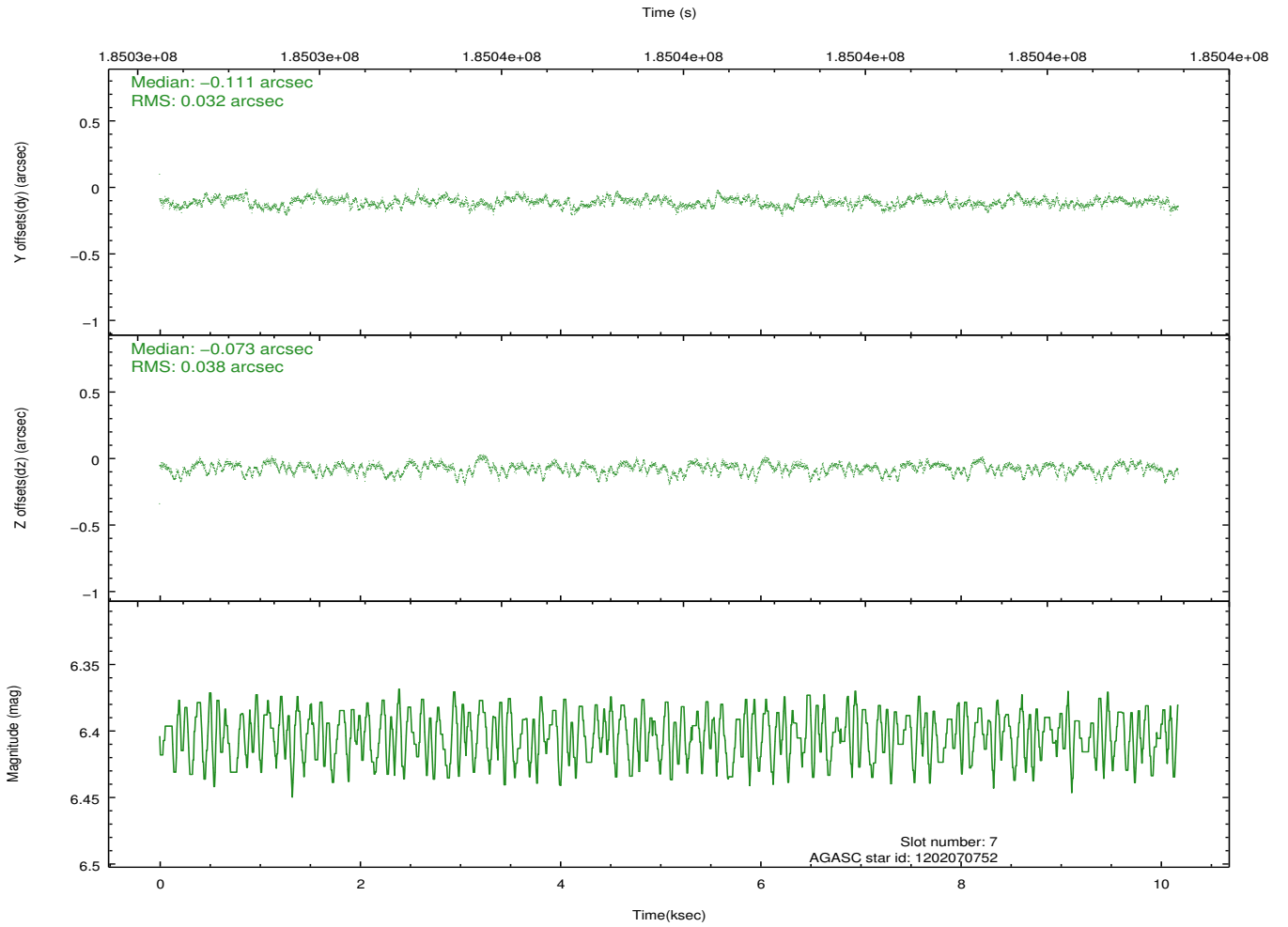
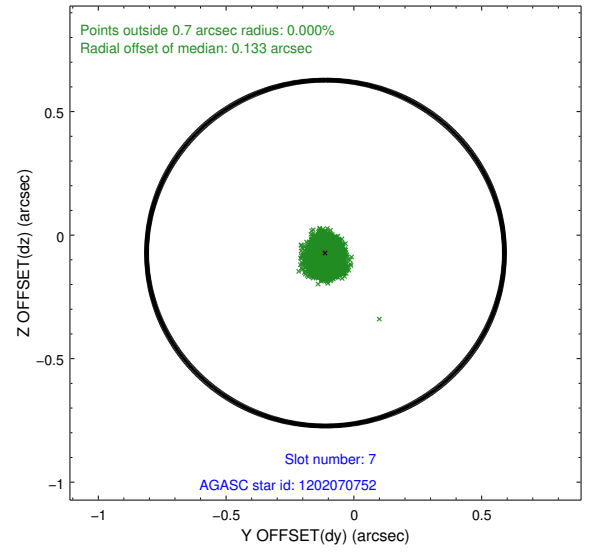
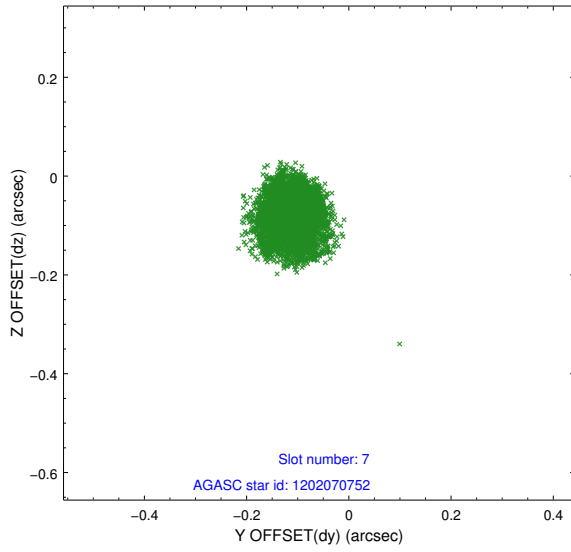
2.4.3 Slot 5



2.4.4 Slot 6

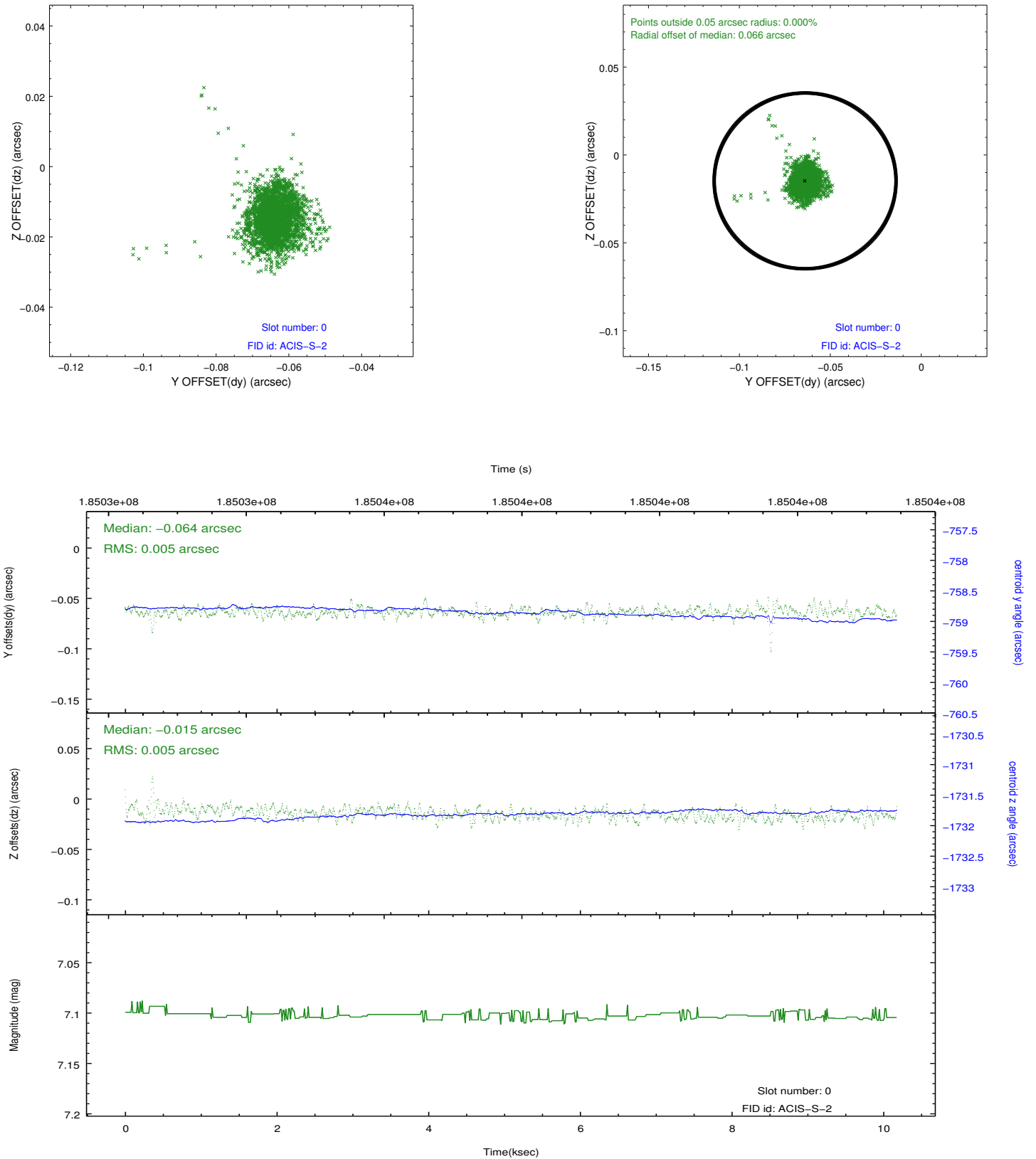


2.4.5 Slot 7

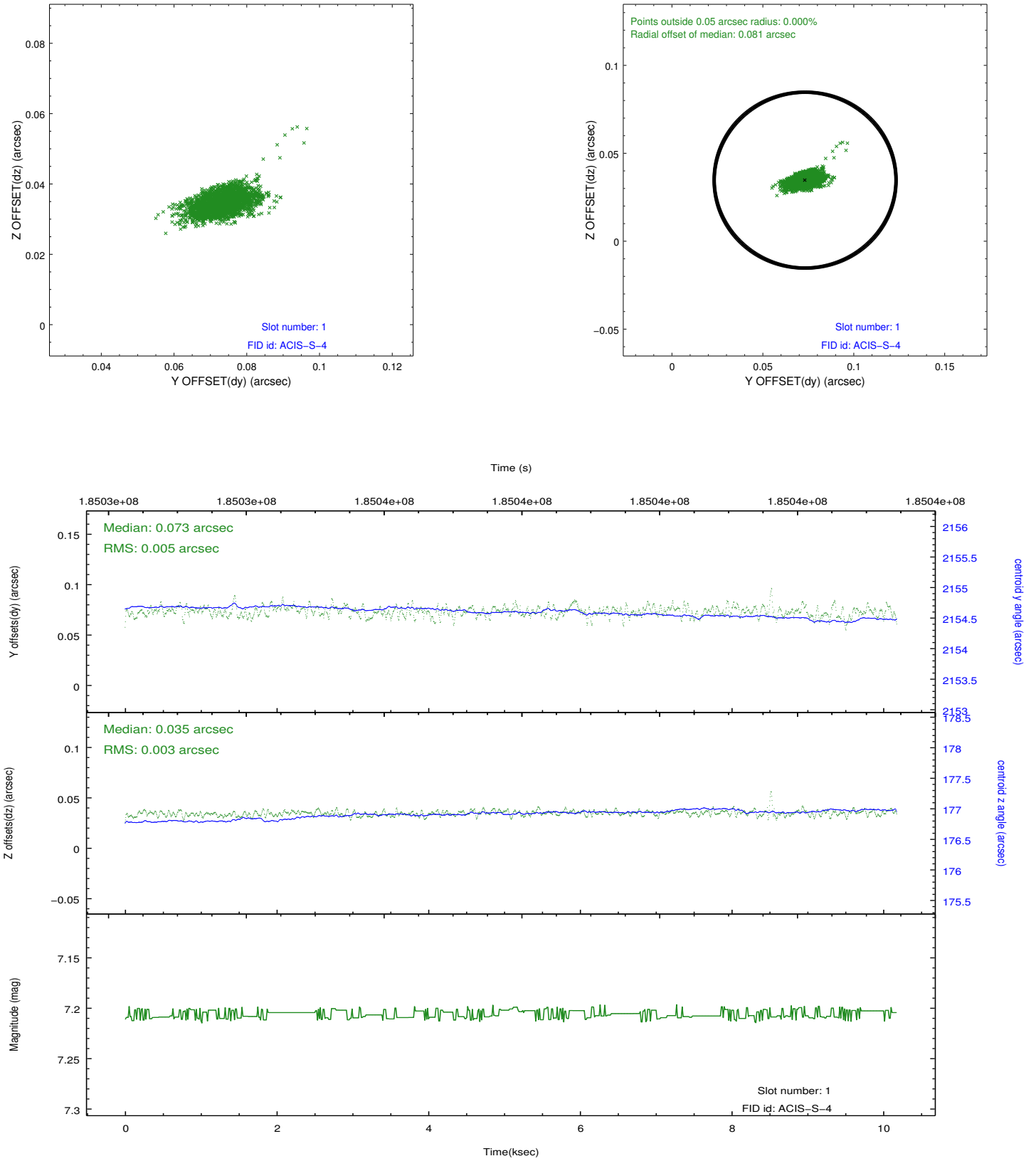


2.5 FID Slots

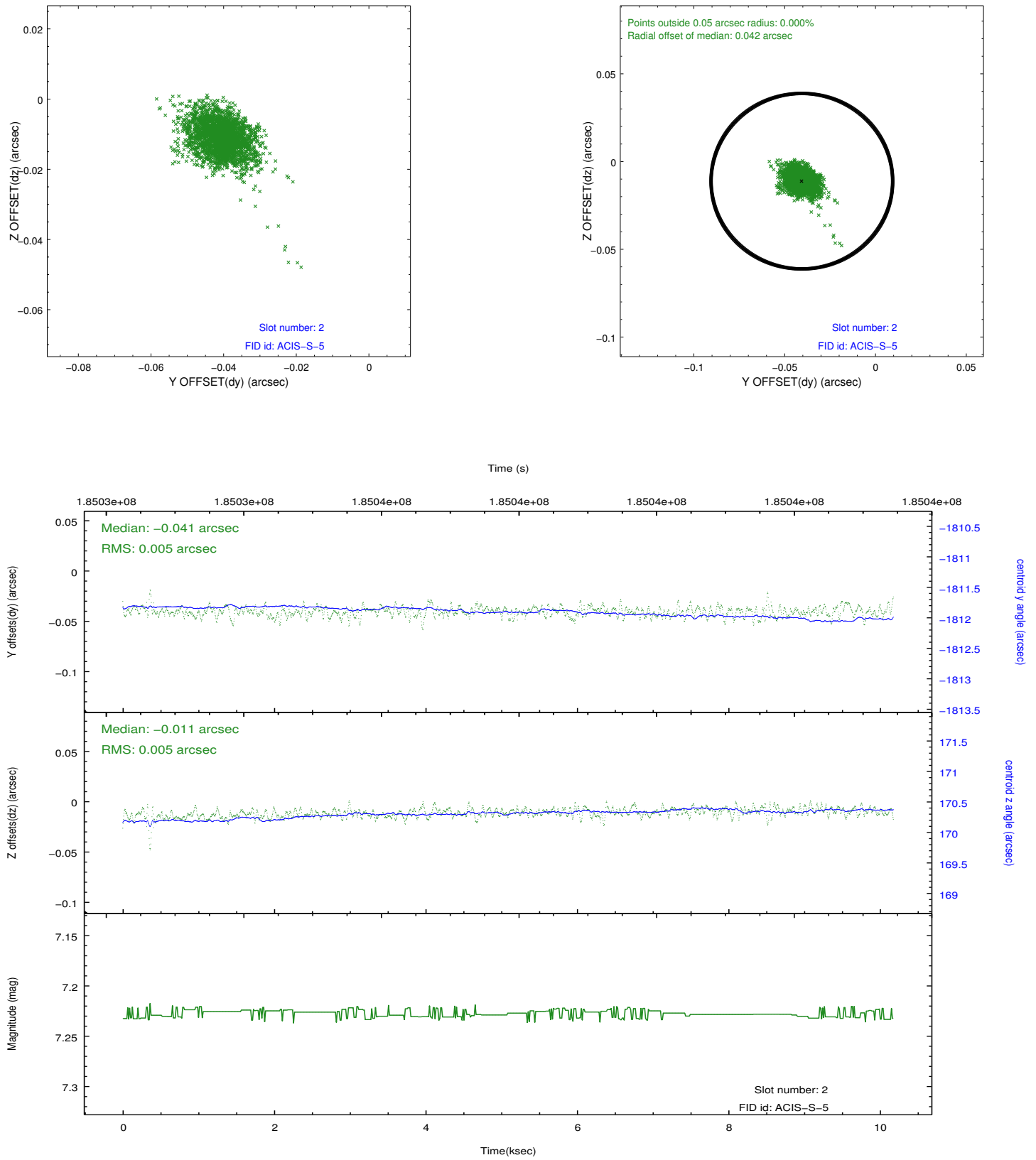
2.5.1 Slot 0



2.5.2 Slot 1



2.5.3 Slot 2



A Summary

A.1 Status

V&V Scientist	Jen Lauer
V&V Date (YYYY-MM-DD)	2012.12.02
V&V Edition	1
V&V Disposition and Status	OK
V&V Charge Time	9.763

A.2 Comments