

V&V Reference Report

L2 ASCDS Version : 8.4.5

Observation 4538 - L2 Version 3
Chandra X-Ray Center

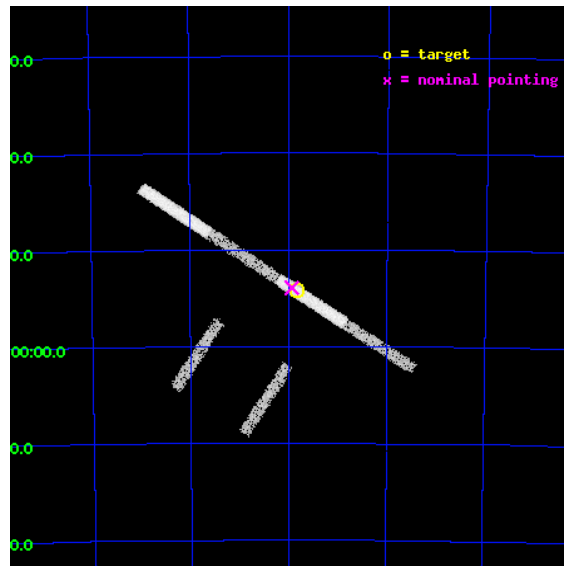
L2 Processing Date : Nov 7 2012

Contents

1	Front	2
2	OBI	3
2.1	OBI	3
2.1.1	Images	3
2.1.2	Bias	3
2.1.3	Parameters	4
2.1.4	Events	4
2.2	Compared Parameters	5
2.3	Aspect	6
2.4	Star Slots	9
2.4.1	Slot 3	9
2.4.2	Slot 4	10
2.4.3	Slot 5	11
2.4.4	Slot 6	12
2.4.5	Slot 7	13
2.5	FID Slots	14
2.5.1	Slot 0	14
2.5.2	Slot 1	15
2.5.3	Slot 2	16
A	Summary	17
A.1	Status	17
A.2	Comments	17

1 Front

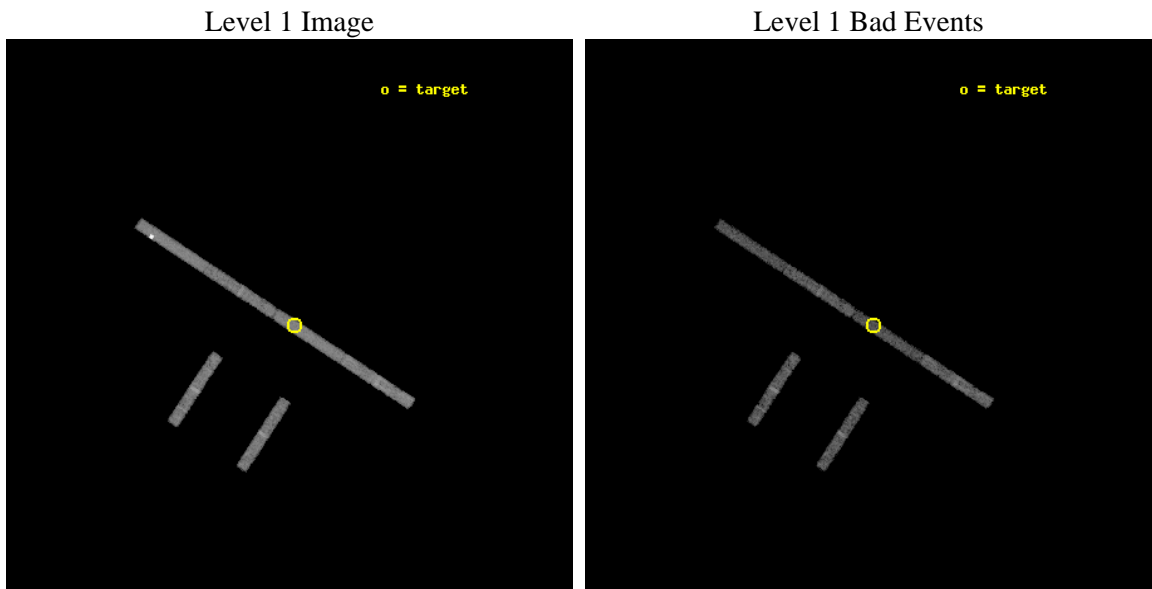
seq_num	300132	Sequence number
obs_id	4538	Observation id
title	Understanding the nature of supersoft X-ray sources	Proposal title
observer	Dr. Jochen Greiner	Principal investigator
object	RXJ 0527.8-6954	Source name
dtcycle	0	
cycle	P	events from which exps? Prim/Second/Both
ra_targ	81.957917	Observer's specified target RA [deg]
dec_targ	-69.9025	Observer's specified target Dec [deg]
ra_nom	81.983966533982	Nominal RA [deg]
dec_nom	-69.898702729536	Nominal Dec [deg]
roll_nom	33.196003665731	Nominal Roll [deg]
revision	3	Processing version of data
ontime	10417.399822593	Sum of GTIs [s]
livetime	9840.4672835675	Livetime [s]
ontime2	10417.399822593	Sum of GTIs [s]
ontime3	10417.399822593	Sum of GTIs [s]
ontime5	10417.399822593	Sum of GTIs [s]
ontime6	10417.399822593	Sum of GTIs [s]
ontime7	10417.399822593	Sum of GTIs [s]
ontime8	10417.399822593	Sum of GTIs [s]
l2events	17563	Number of level 2 events



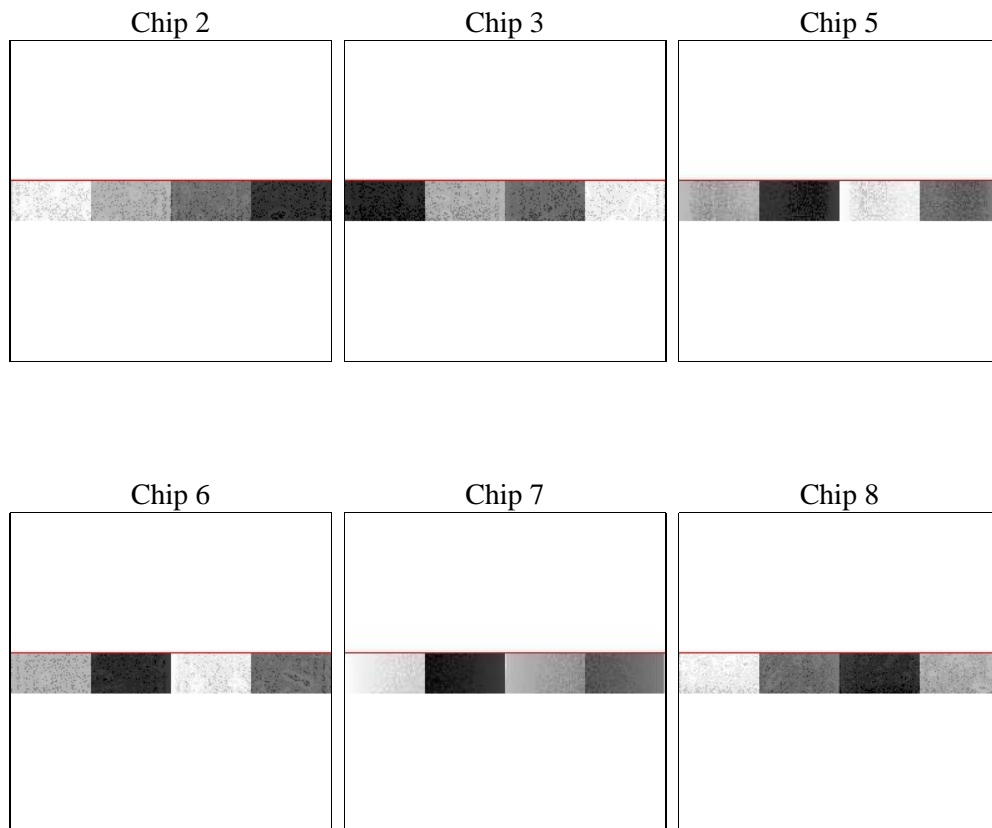
2 OBI

2.1 OBI

2.1.1 Images



2.1.2 Bias



2.1.3 Parameters

obi_num	0	Obi number	sched_exp_time	10000.000000	[s] Scheduled observation exposure time
ascdsver	8.4.5	Processing system revision	ontime	10417.399822593	Sum of GTIs [s]
caldsver	4.5.2	 	ontime2	10417.399822593	Sum of GTIs [s]
date	2012-11-08T02:08:21	Date and time of file creation	ontime3	10417.399822593	Sum of GTIs [s]
revision	3	Processing version of data	ontime5	10417.399822593	Sum of GTIs [s]
			ontime6	10417.399822593	Sum of GTIs [s]
			ontime7	10417.399822593	Sum of GTIs [s]
			ontime8	10417.399822593	Sum of GTIs [s]
			l1events	86983	Number of level 1 events

2.1.4 Events

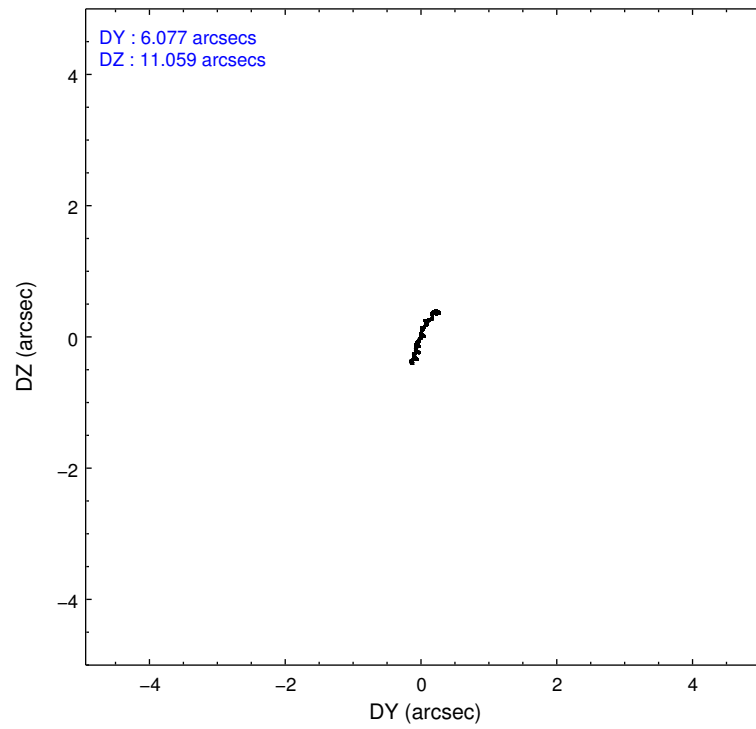
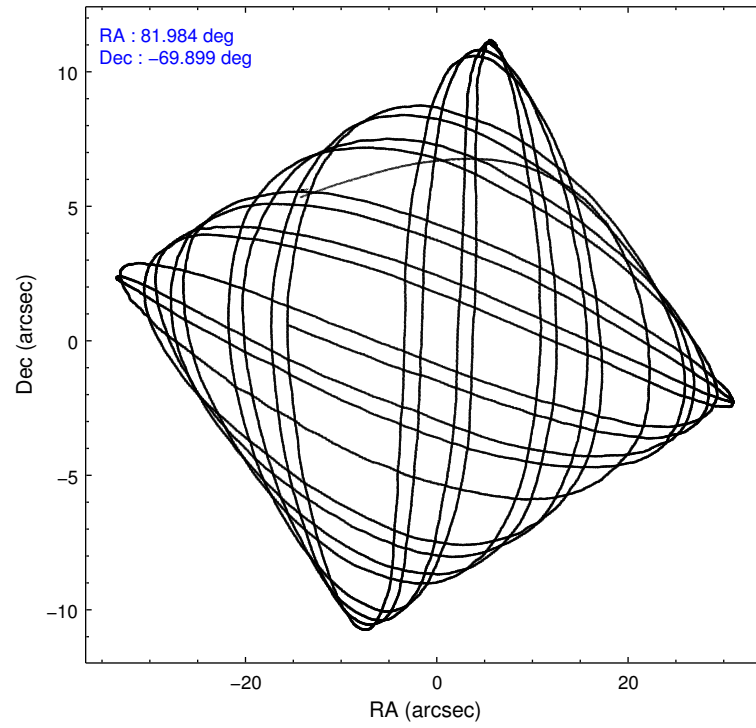
	ccd 2	ccd 3	ccd 5	ccd 6	ccd 7	ccd 8
level 1 events	11533	10013	27297	10537	12933	14670
rejected events	10015	8676	6869	9087	6516	12092
rejected %	86%	86%	25%	86%	50%	82%

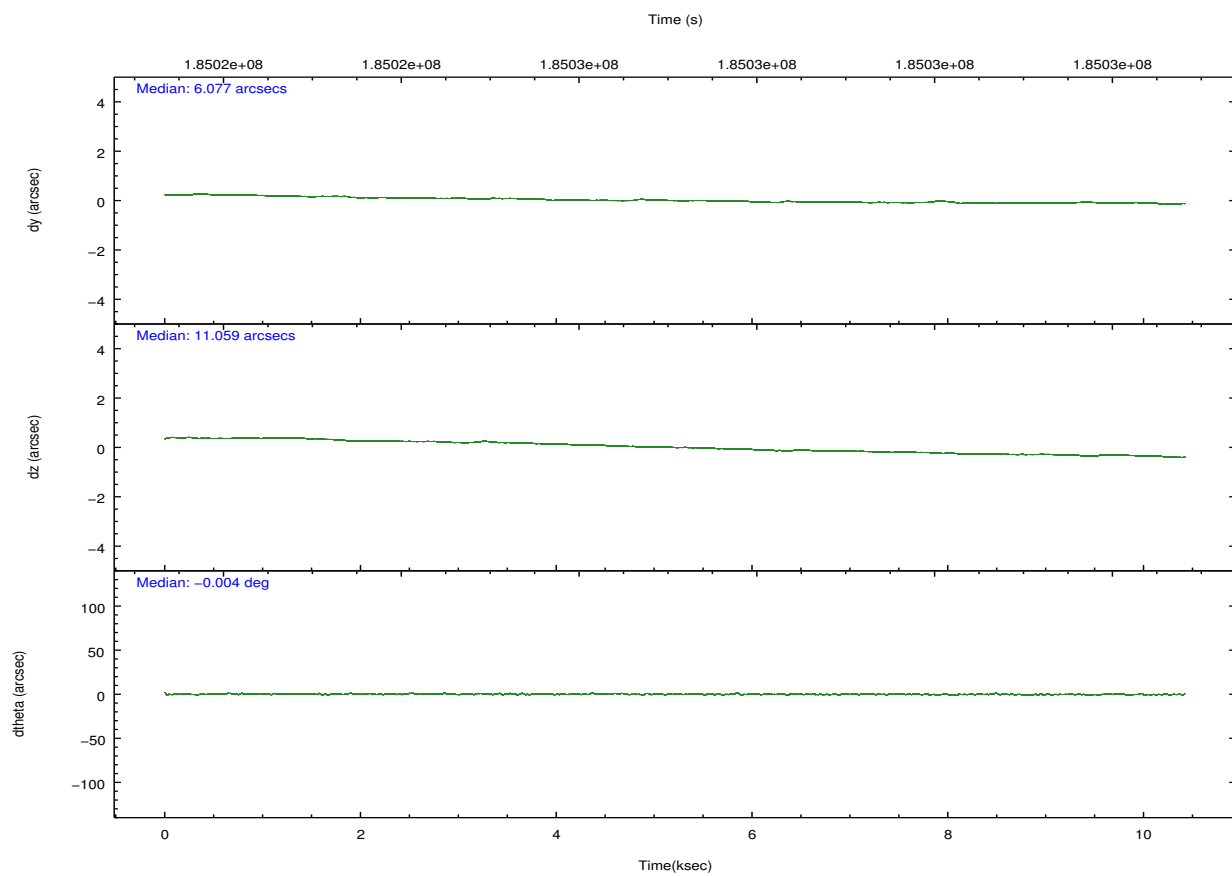
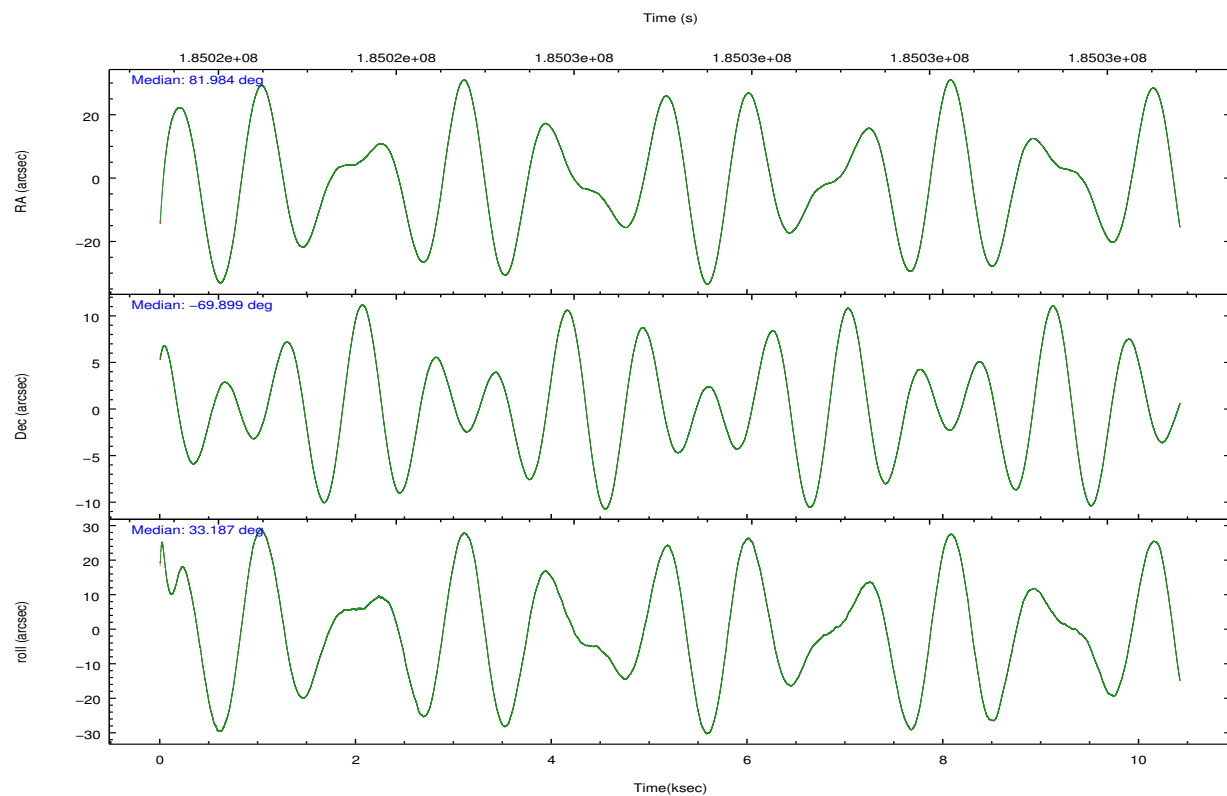
	ccd 2	ccd 3	ccd 5	ccd 6	ccd 7	ccd 8
grade 0 events	657	612	13700	621	792	913
	5%	6%	50%	5%	6%	6%
grade 1 events	3	8	32	2	11	5
	0%	0%	0%	0%	0%	0%
grade 2 events	249	198	2732	240	1254	433
	2%	1%	10%	2%	9%	2%
grade 3 events	215	177	485	183	686	299
	1%	1%	1%	1%	5%	2%
grade 4 events	194	161	532	165	683	263
	1%	1%	1%	1%	5%	1%
grade 5 events	346	337	1090	407	1008	435
	3%	3%	3%	3%	7%	2%
grade 6 events	211	196	3165	252	3055	690
	1%	1%	11%	2%	23%	4%
grade 7 events	9658	8324	5561	8667	5444	11632
	83%	83%	20%	82%	42%	79%

2.2 Compared Parameters

Parameter	Planned	Actual	Parameter	Planned	Actual
Instrument	ACIS	ACIS	Obspar format version number	7	7
Detector	ACIS-235678	ACIS-235678	Obspar file type	PREDICTED	ACTUAL
Grating	NONE	NONE	Obspar update status	NONE	UPDATED
Data mode	FAINT	FAINT	Number of optional ACIS chips dropped	0	0
Observation mode	POINTING	POINTING	On-chip summing requested	N	N
[deg] Pointing RA	81.948990	81.98396653398154	Subarray requested	CUSTOM	1/8
[deg] Pointing Dec	-69.923191	-69.8987027295363	Subarray start row	449	449
[deg] Pointing Roll	33.006480	33.19600366573071	Subarray row count	128	128
[mm] SIM focus pos	-0.684267	-0.6828225247311905	Alternating exposures requested	N	N
[mm] SIM defocus	0	0.001444936568705701	[s] Primary exposure time	0.000000	0.7
[mm] SIM translation stage pos	-190.132523	-190.1400660498719			
[mm] SIM translation stage offset	0	0.00754346686406393			
[s] Observation start time (MET)	185022296.184000	185021217.92466			
Observation start date	2003-11-12T11:03:52	2003-11-12T10:46:57			
[s] Observation end time (MET)	185032296.184000	185032489.33765			
Observation end date	2003-11-12T13:50:32	2003-11-12T13:54:49			
Read mode	TIMED	TIMED			

2.3 Aspect



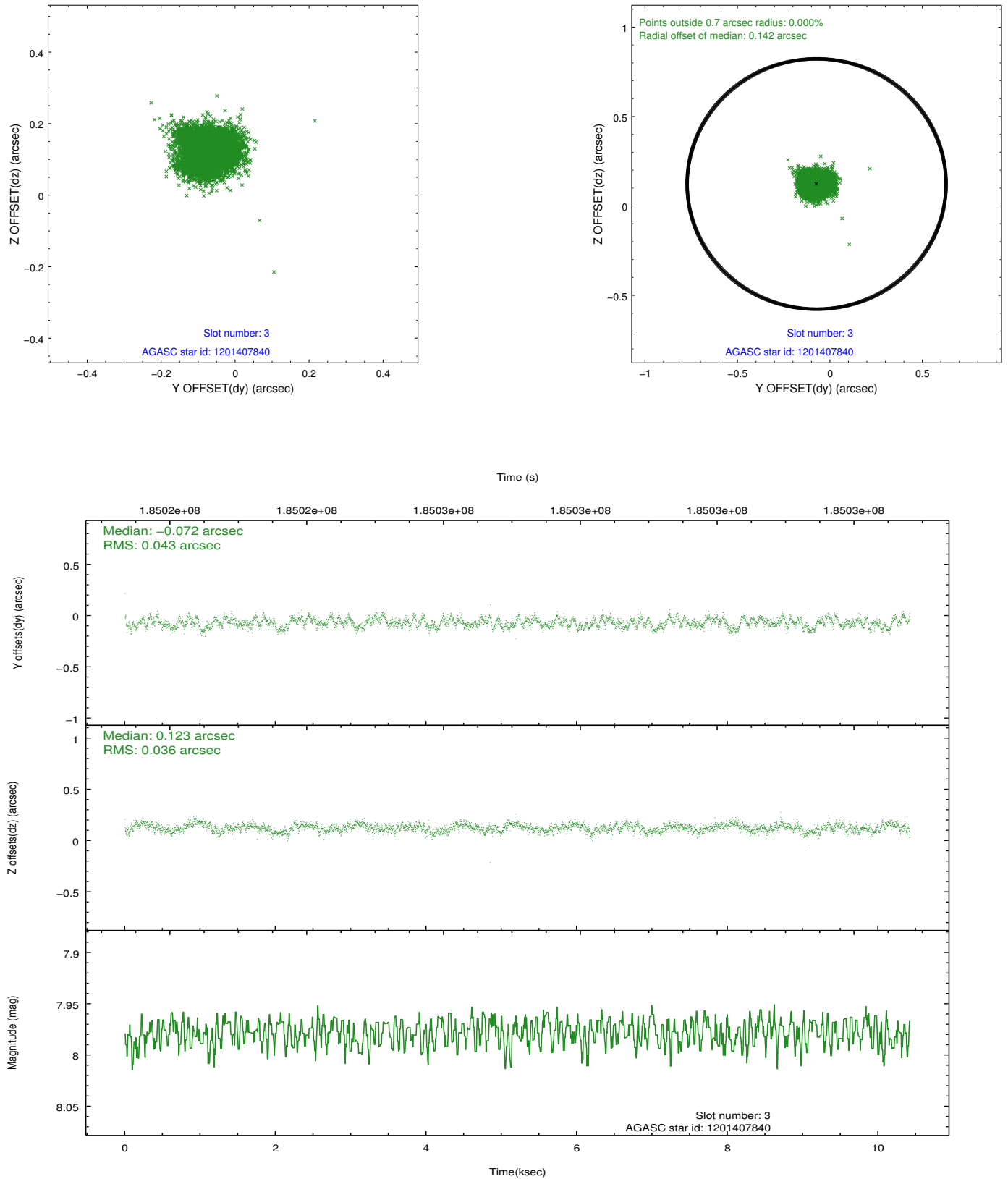


Slot Statistics

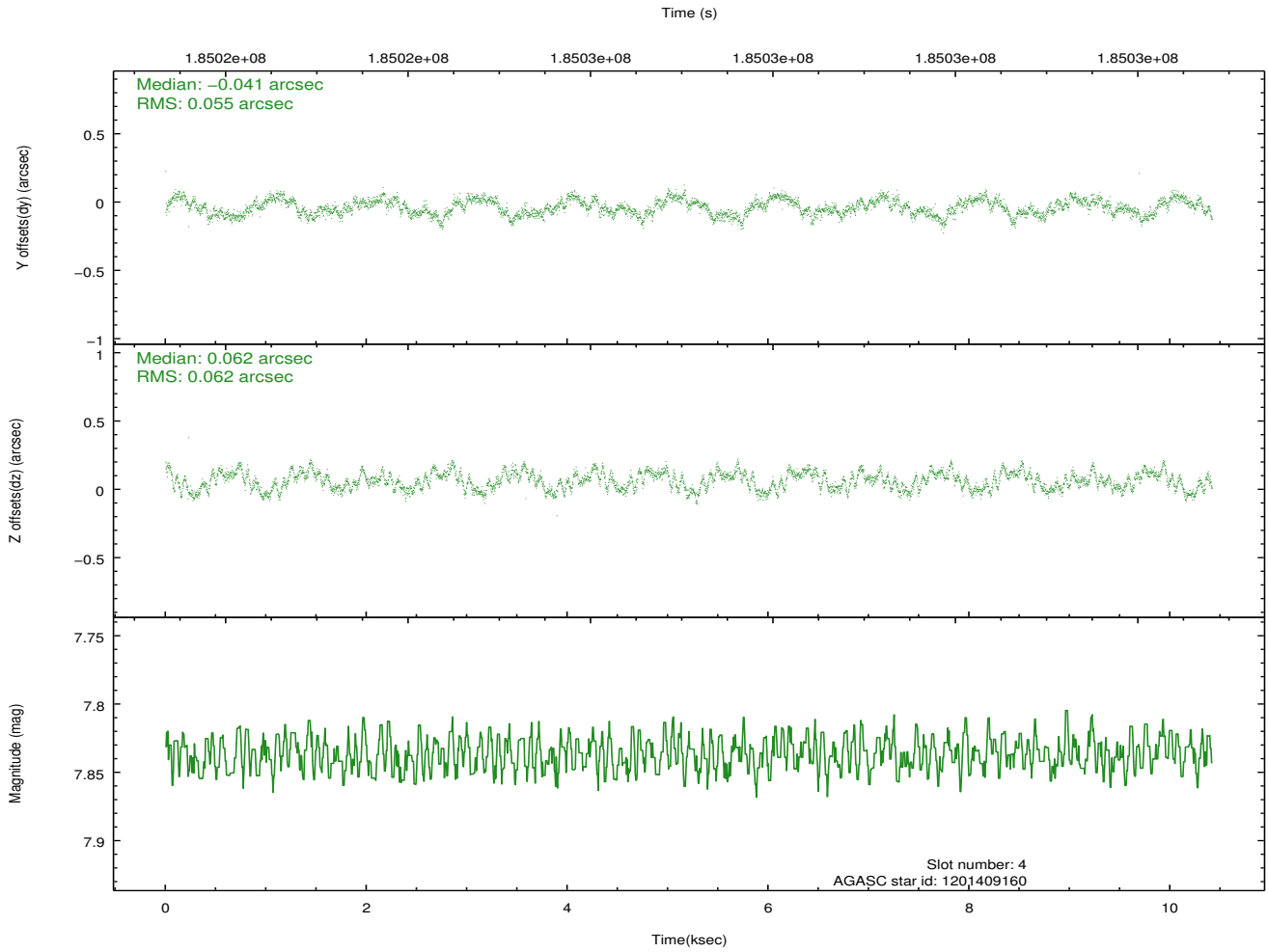
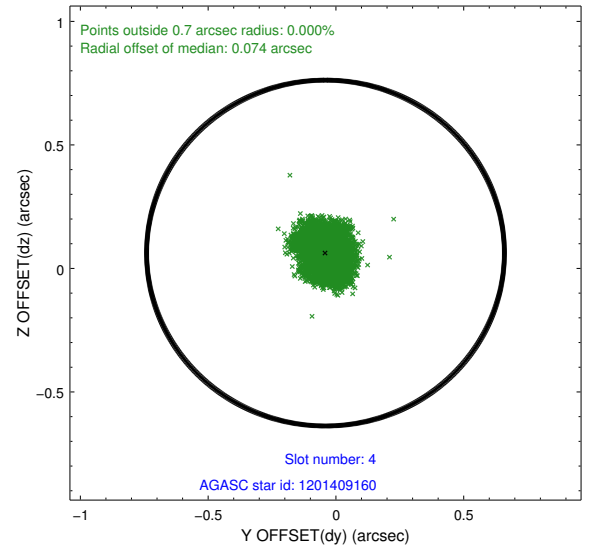
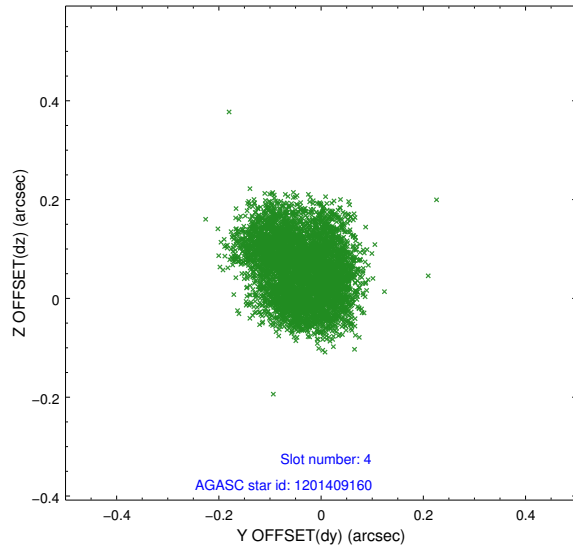
slot	status	id	mag	n_pts	med_dy	med_dz	dr1	dr2	ra	dec	mean_y	mean_z
0	FID	ACIS-S-2	7.10	2541	-0.056	-0.041	0.010	0.017	0.000000	0.000000	-758.88	-1732.38
1	FID	ACIS-S-4	7.20	2542	0.045	0.027	0.008	0.013	0.000000	0.000000	2154.27	175.64
2	FID	ACIS-S-6	7.34	2542	-0.016	0.020	0.009	0.014	0.000000	0.000000	403.79	813.61
3	GUIDE	1201407840	7.98	5083	-0.072	0.123	0.060	0.094	83.696303	-70.172201	1284.44	-1939.07
4	GUIDE	1201409160	7.84	5078	-0.041	0.062	0.092	0.132	81.660661	-70.063595	-572.14	-231.84
5	GUIDE	1201409312	9.25	5082	-0.020	-0.065	0.087	0.141	80.915231	-69.503059	-275.15	1969.08
6	GUIDE	1201410888	8.00	5083	-0.051	-0.031	0.050	0.082	81.046858	-70.018210	-1121.45	311.17
7	GUIDE	1201410616	9.34	5063	0.183	-0.087	0.090	0.143	82.516808	-69.784406	862.85	31.78

2.4 Star Slots

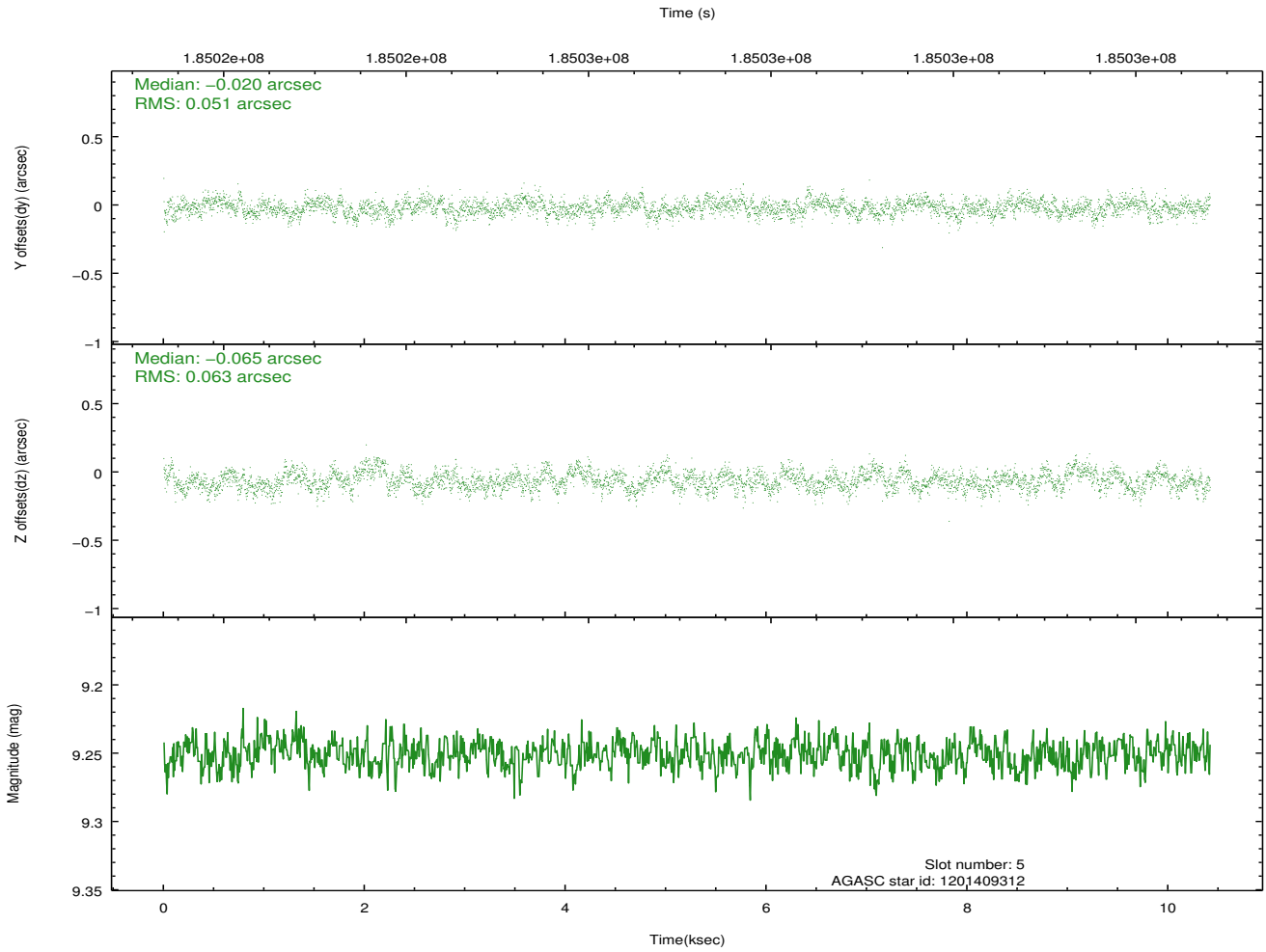
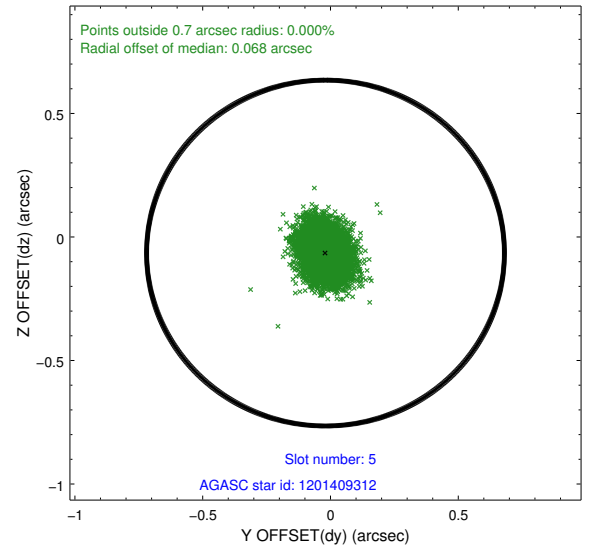
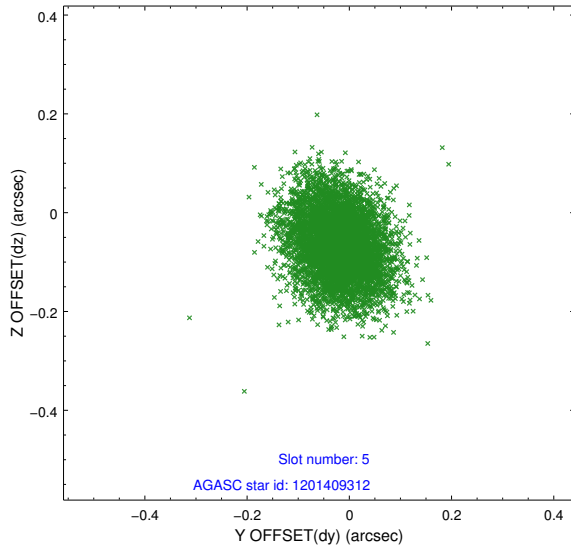
2.4.1 Slot 3



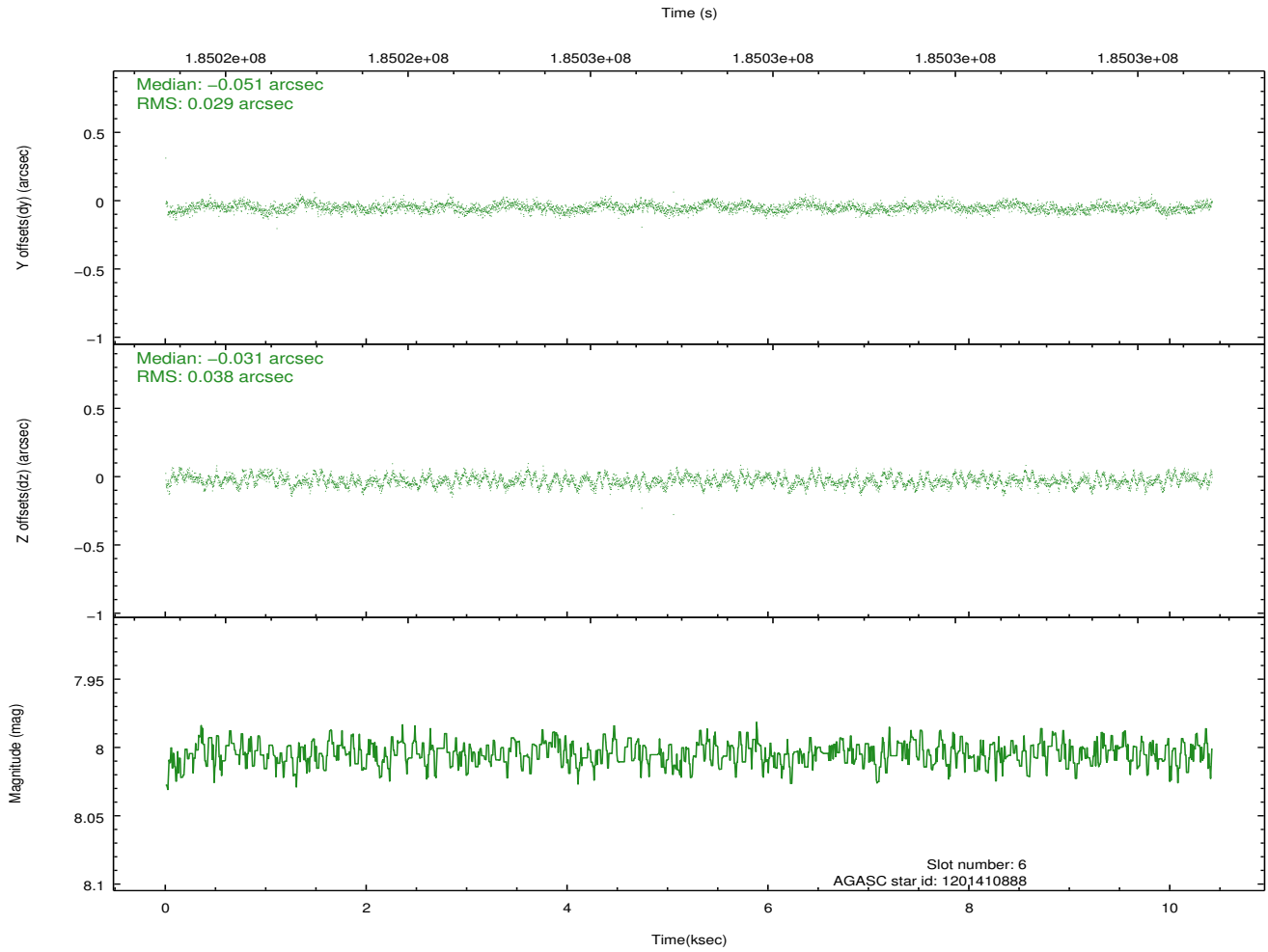
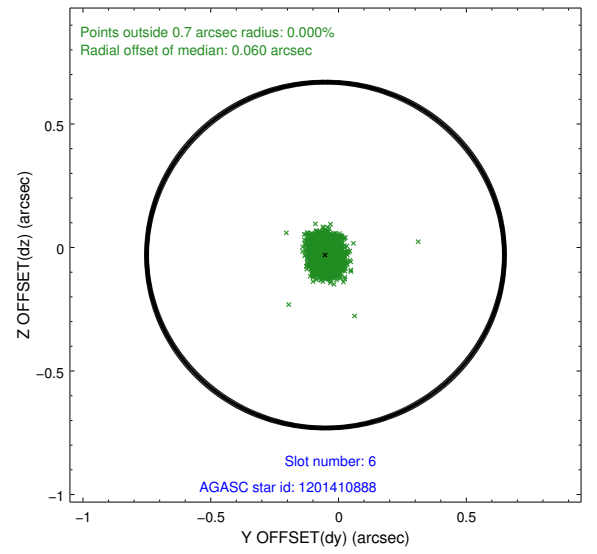
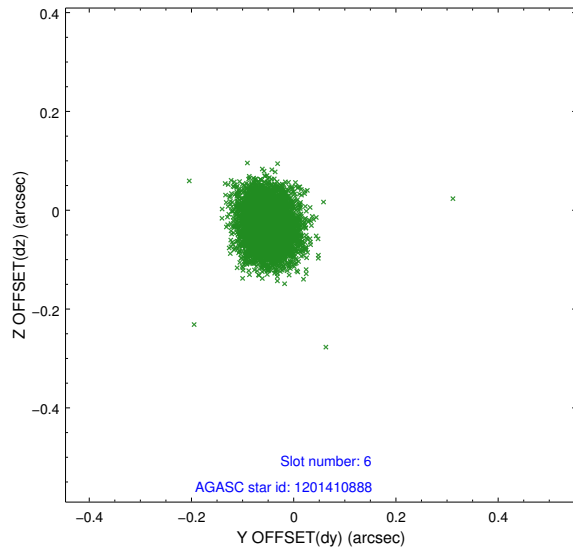
2.4.2 Slot 4



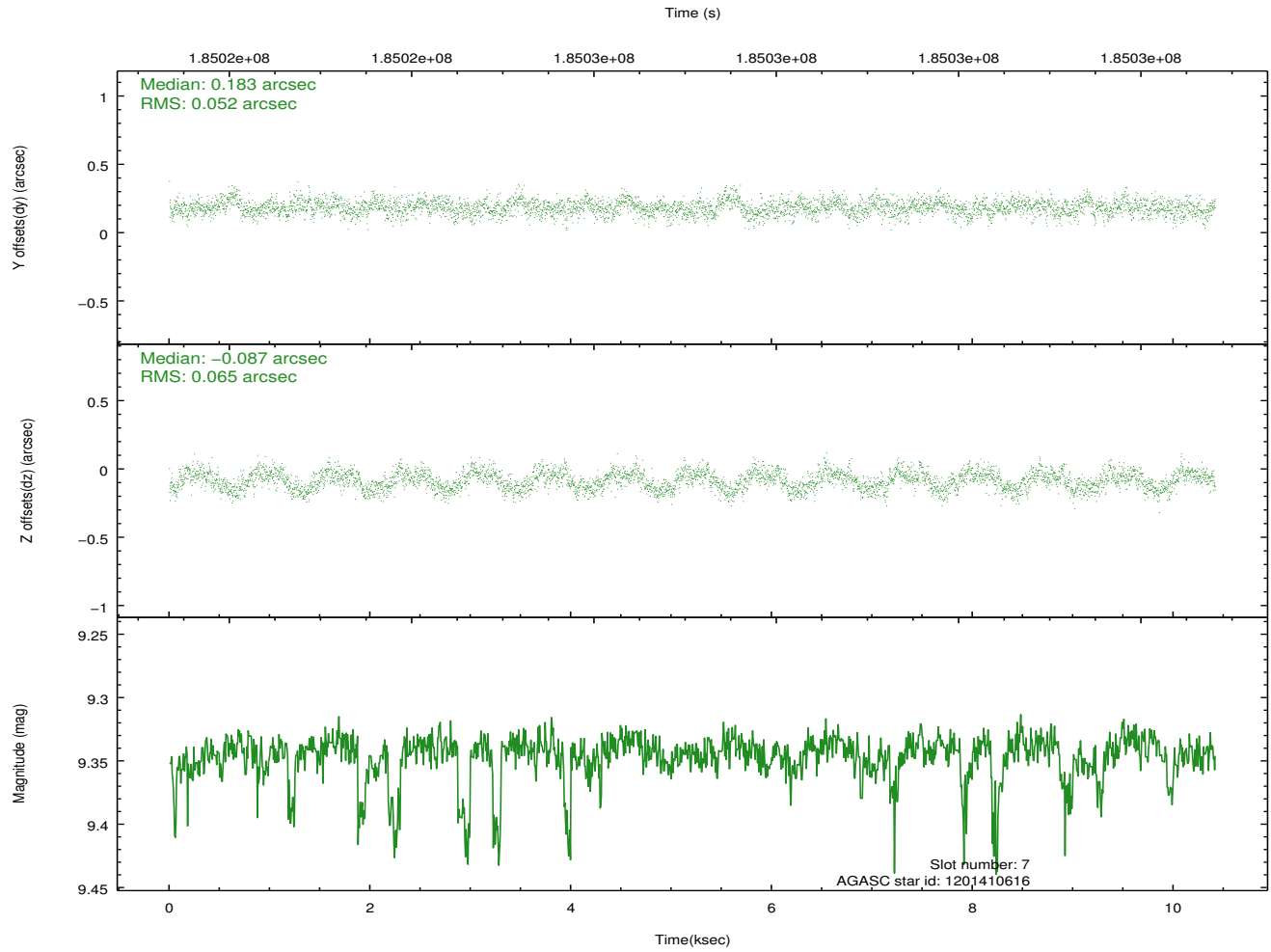
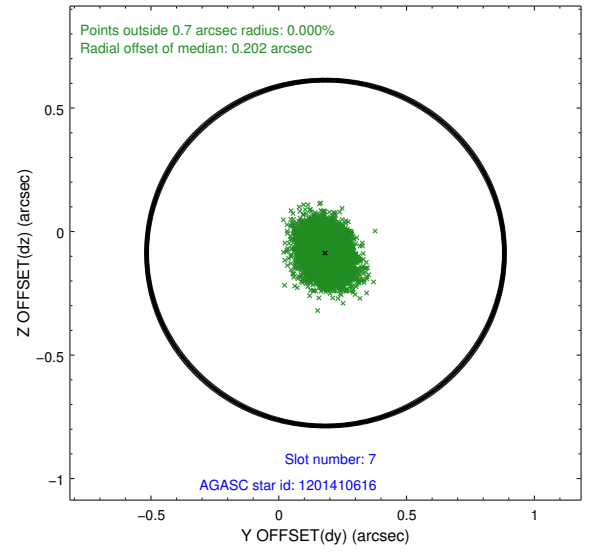
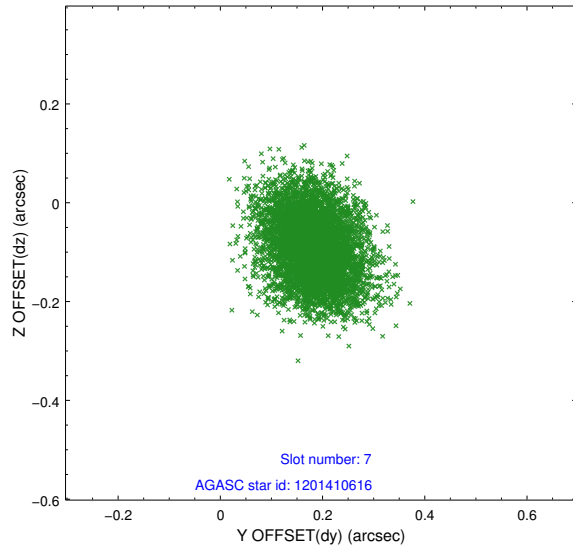
2.4.3 Slot 5



2.4.4 Slot 6

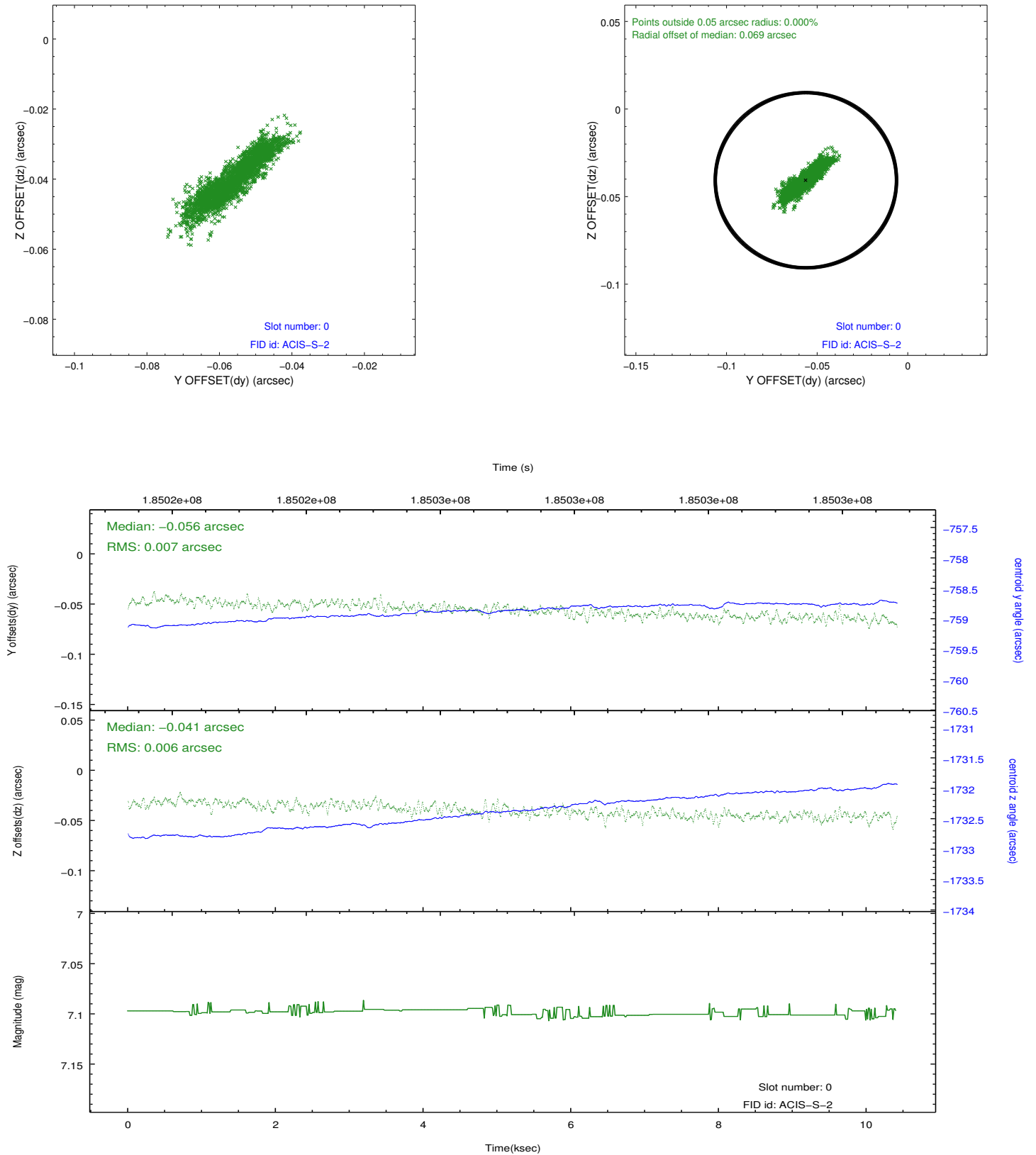


2.4.5 Slot 7

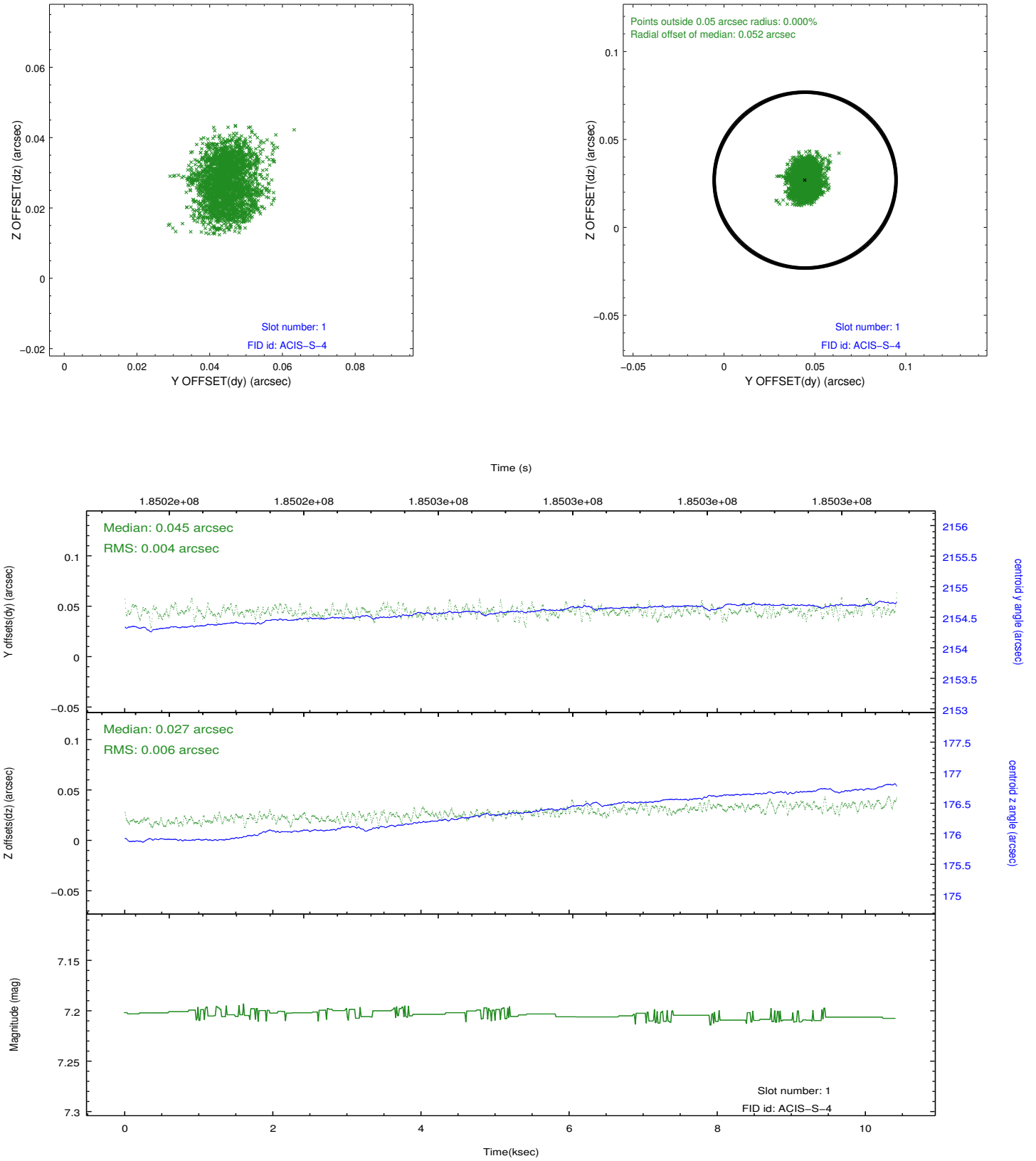


2.5 FID Slots

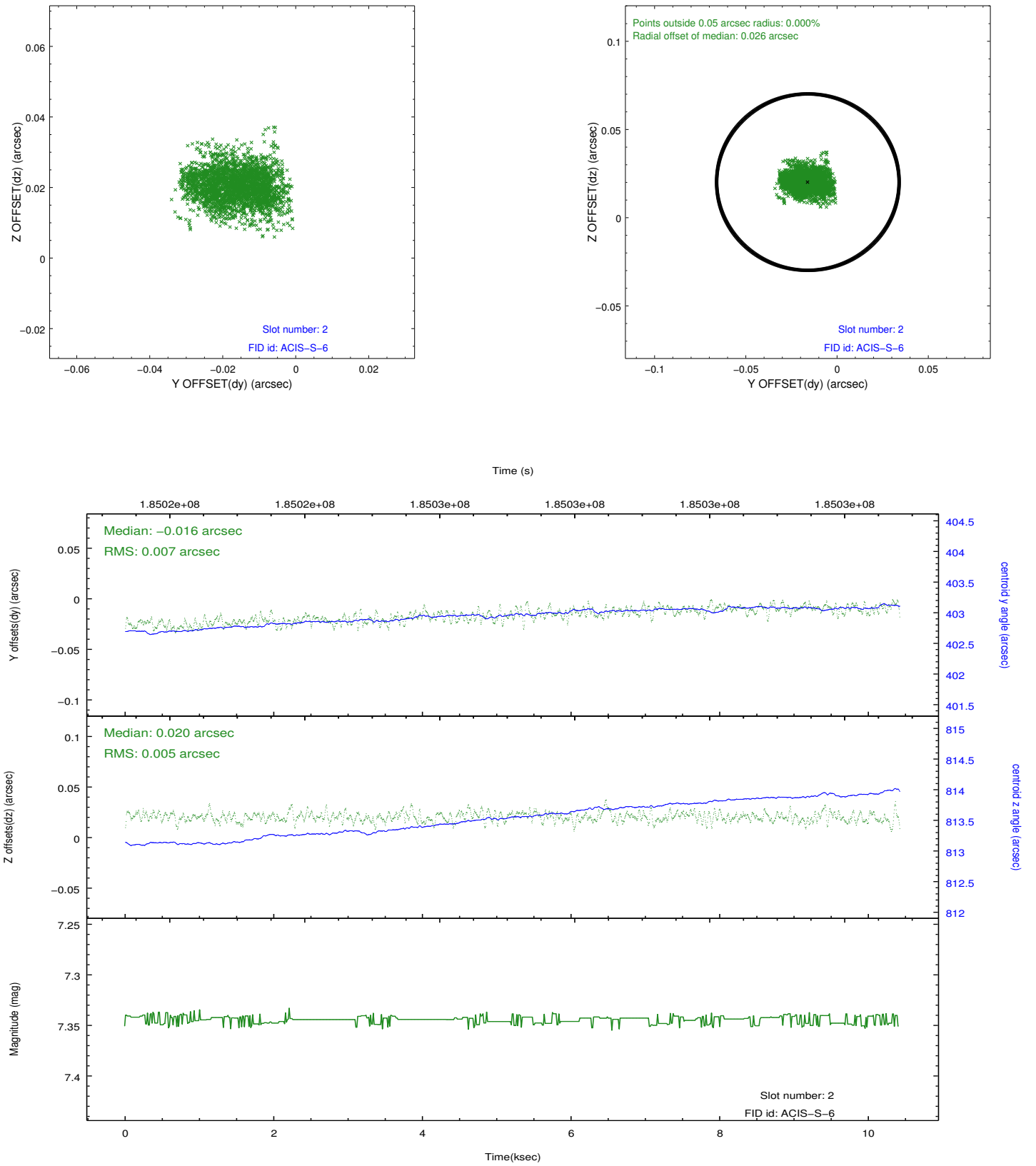
2.5.1 Slot 0



2.5.2 Slot 1



2.5.3 Slot 2



A Summary

A.1 Status

V&V Scientist	Jen Lauer
V&V Date (YYYY-MM-DD)	2012.11.30
V&V Edition	1
V&V Disposition and Status	OK
V&V Charge Time	10.417

A.2 Comments