

# V&V Reference Report

## L2 ASCDS Version : 8.5.1.1

Observation 4537 - L2 Version 3  
Chandra X-Ray Center

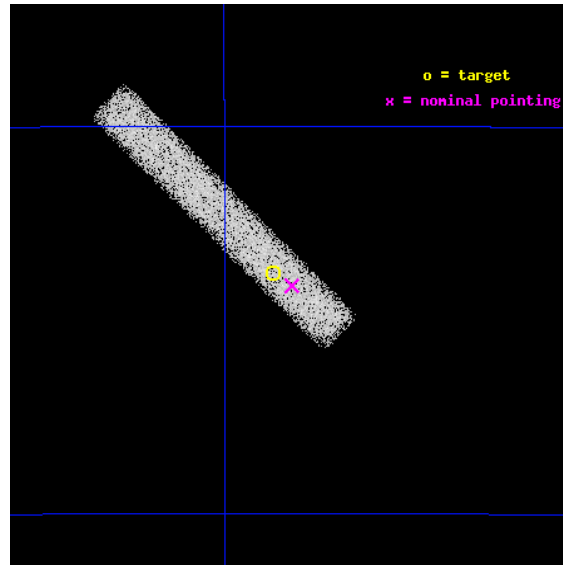
L2 Processing Date : Dec 23 2012

## Contents

<b>1</b>	<b>Front</b>	<b>2</b>
<b>2</b>	<b>OBI</b>	<b>3</b>
2.1	OBI . . . . .	3
2.1.1	Images . . . . .	3
2.1.2	Bias . . . . .	3
2.1.3	Parameters . . . . .	4
2.1.4	Events . . . . .	4
2.2	Compared Parameters . . . . .	5
2.3	Aspect . . . . .	6
2.4	Star Slots . . . . .	9
2.4.1	Slot 3 . . . . .	9
2.4.2	Slot 4 . . . . .	10
2.4.3	Slot 5 . . . . .	11
2.4.4	Slot 6 . . . . .	12
2.4.5	Slot 7 . . . . .	13
2.5	FID Slots . . . . .	14
2.5.1	Slot 0 . . . . .	14
2.5.2	Slot 1 . . . . .	15
2.5.3	Slot 2 . . . . .	16
<b>A</b>	<b>Summary</b>	<b>17</b>
A.1	Status . . . . .	17
A.2	Comments . . . . .	17

# 1 Front

seq_num	300131	Sequence number
obs_id	4537	Observation id
title	Understanding the nature of supersoft X-ray sources	Proposal title
observer	Dr. Jochen Greiner	Principal investigator
object	RXJ 0537.7-7034	Source name
dtcycle	0	&#160
cycle	P	events from which exps? Prim/Second/Both
ra_targ	84.435833	Observer's specified target RA [deg]
dec_targ	-70.563056	Observer's specified target Dec [deg]
ra_nom	84.411941051052	Nominal RA [deg]
dec_nom	-70.56857207011	Nominal Dec [deg]
roll_nom	224.73673947952	Nominal Roll [deg]
revision	3	Processing version of data
ontime	32173.200479388	Sum of GTIs [s]
livetime	29179.39459404	Livetime [s]
ontime7	32173.200479388	Sum of GTIs [s]
l2events	19235	Number of level 2 events

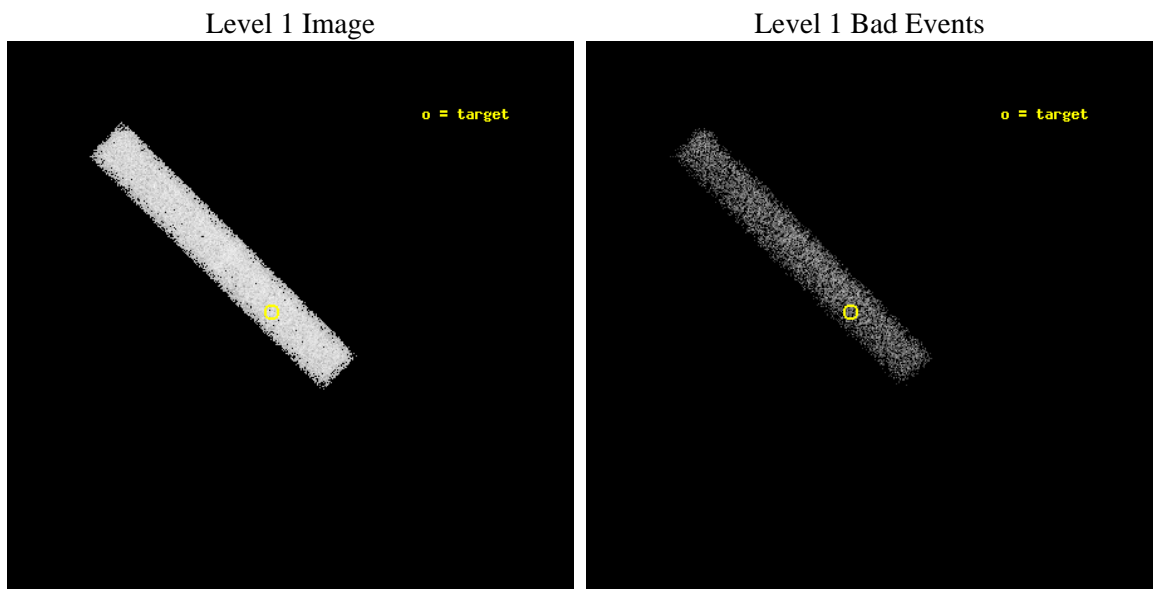




## 2 OBI

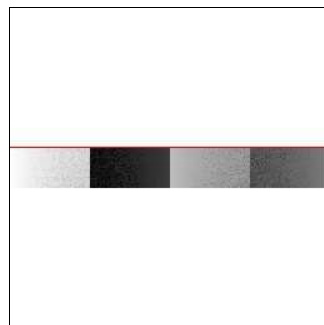
### 2.1 OBI

#### 2.1.1 Images



#### 2.1.2 Bias

Chip 7



### 2.1.3 Parameters

obi_num	0	Obi number	sched_exp_time	32000.000000	[s] Scheduled observation exposure time
ascdsver	8.5.1.1	Processing system revision	ontime	32173.200479388	Sum of GTIs [s]
caldsver	4.5.5	&#160	ontime7	32173.200479388	Sum of GTIs [s]
date	2012-12-23T02:43:17	Date and time of file creation	l1events	44638	Number of level 1 events
revision	3	Processing version of data			

### 2.1.4 Events

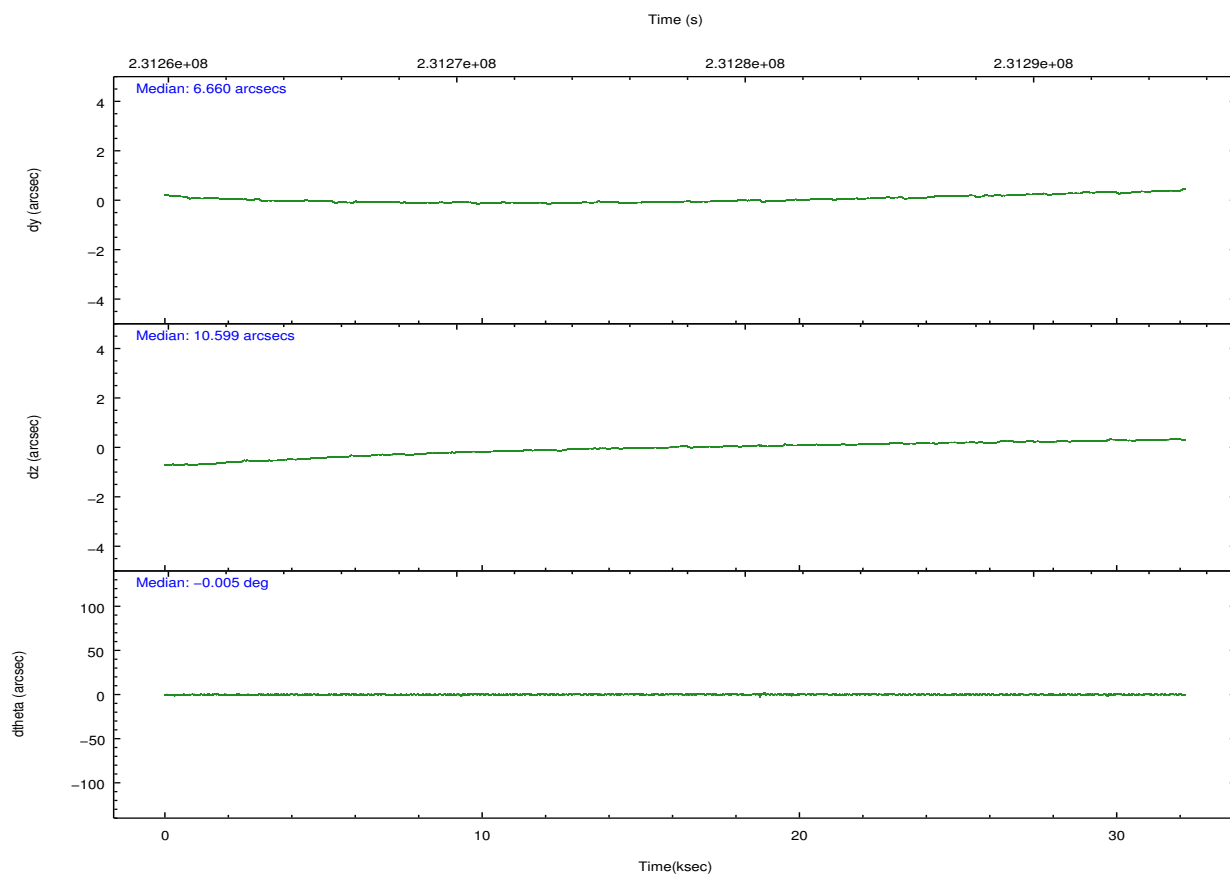
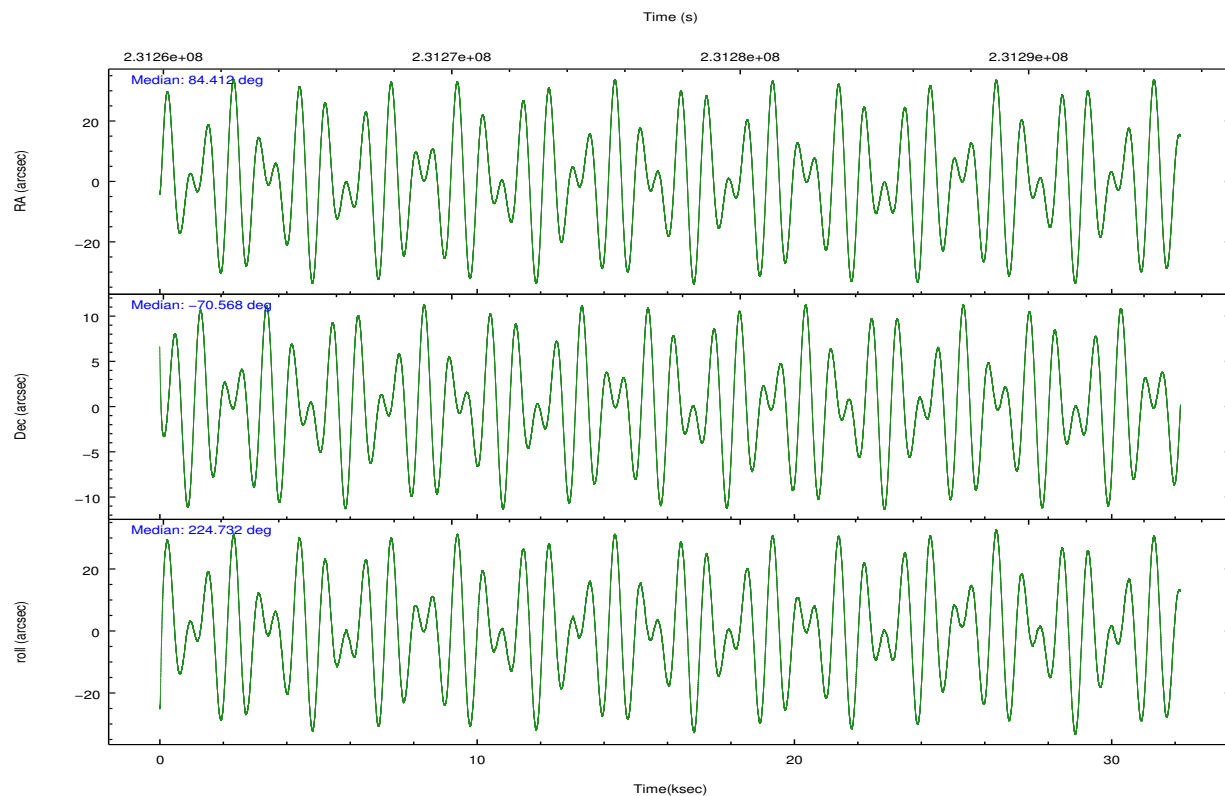
	<b>ccd 7</b>
level 1 events	44638
rejected events	24560
rejected %	55%

	<b>ccd 7</b>
grade 0 events	1985
	4%
grade 1 events	47
	0%
grade 2 events	3908
	8%
grade 3 events	2697
	6%
grade 4 events	2642
	5%
grade 5 events	4060
	9%
grade 6 events	9311
	20%
grade 7 events	19988
	44%

## 2.2 Compared Parameters

Parameter	Planned	Actual	Parameter	Planned	Actual
Instrument	ACIS	ACIS	Obspar format version number	7	7
Detector	ACIS-7	ACIS-7	Obspar file type	PREDICTED	ACTUAL
Grating	NONE	NONE	Obspar update status	NONE	UPDATED
Data mode	VFAINT	VFAINT	Number of optional ACIS chips dropped	0	0
Observation mode	POINTING	POINTING	On-chip summing requested	N	N
[deg] Pointing RA	84.432386	84.41194105105247	Subarray requested	CUSTOM	1/8
[deg] Pointing Dec	-70.542178	-70.56857207011008	Subarray start row	449	449
[deg] Pointing Roll	224.599403	224.7367394795239	Subarray row count	128	128
[mm] SIM focus pos	-0.684267	-0.6828225247311905	Alternating exposures requested	N	N
[mm] SIM defocus	0	0.001444936568705701	[s] Primary exposure time	0.000000	0.4
[mm] SIM translation stage pos	-190.132523	-190.1400660498719			
[mm] SIM translation stage offset	0	0.00754346686406393			
[s] Observation start time (MET)	231261655.184000	231260651.49264			
Observation start date	2005-04-30T15:19:51	2005-04-30T15:04:11			
[s] Observation end time (MET)	231293655.184000	231294569.76919			
Observation end date	2005-05-01T00:13:11	2005-05-01T00:29:29			
Read mode	TIMED	TIMED			

## 2.3 Aspect

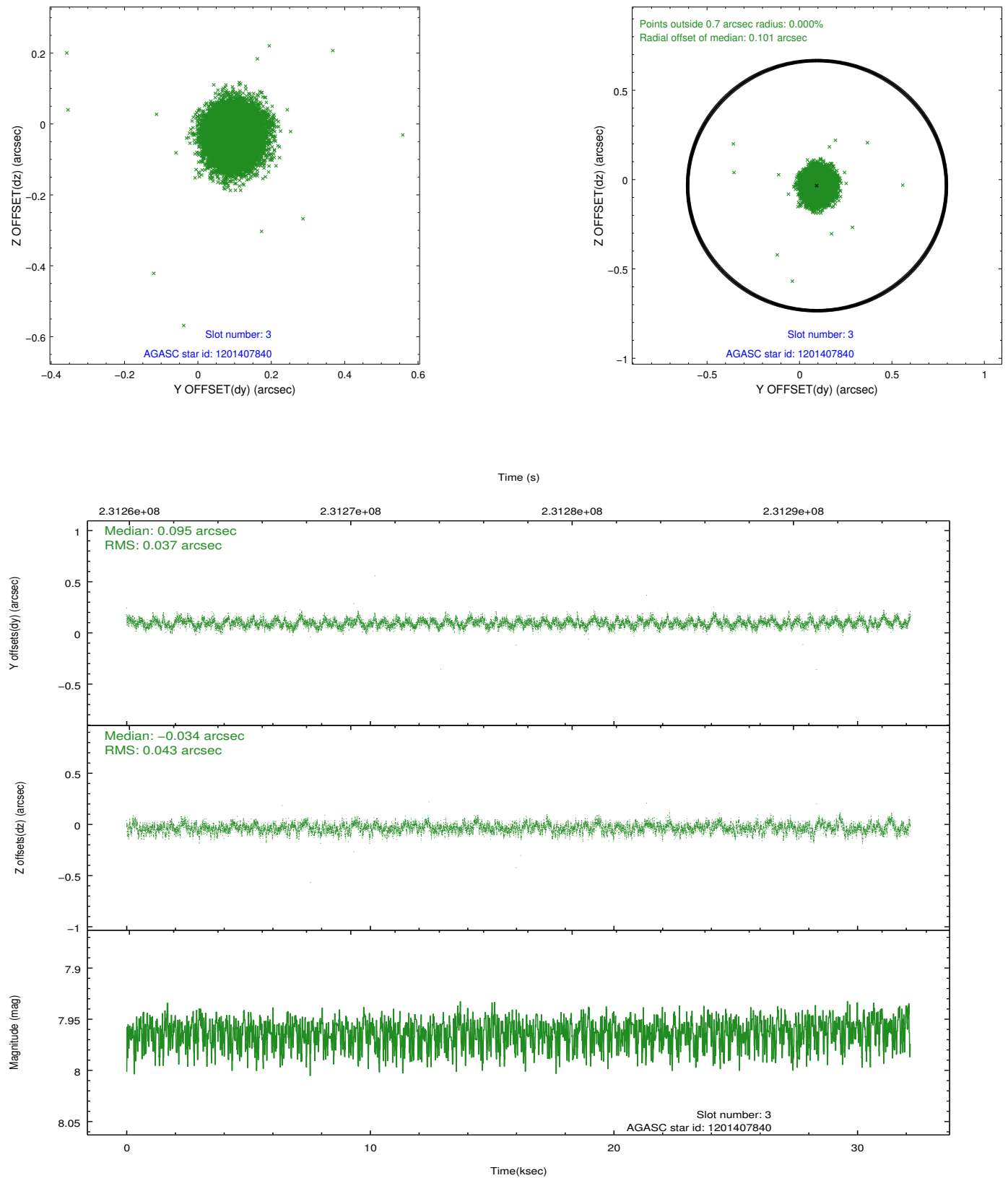


### Slot Statistics

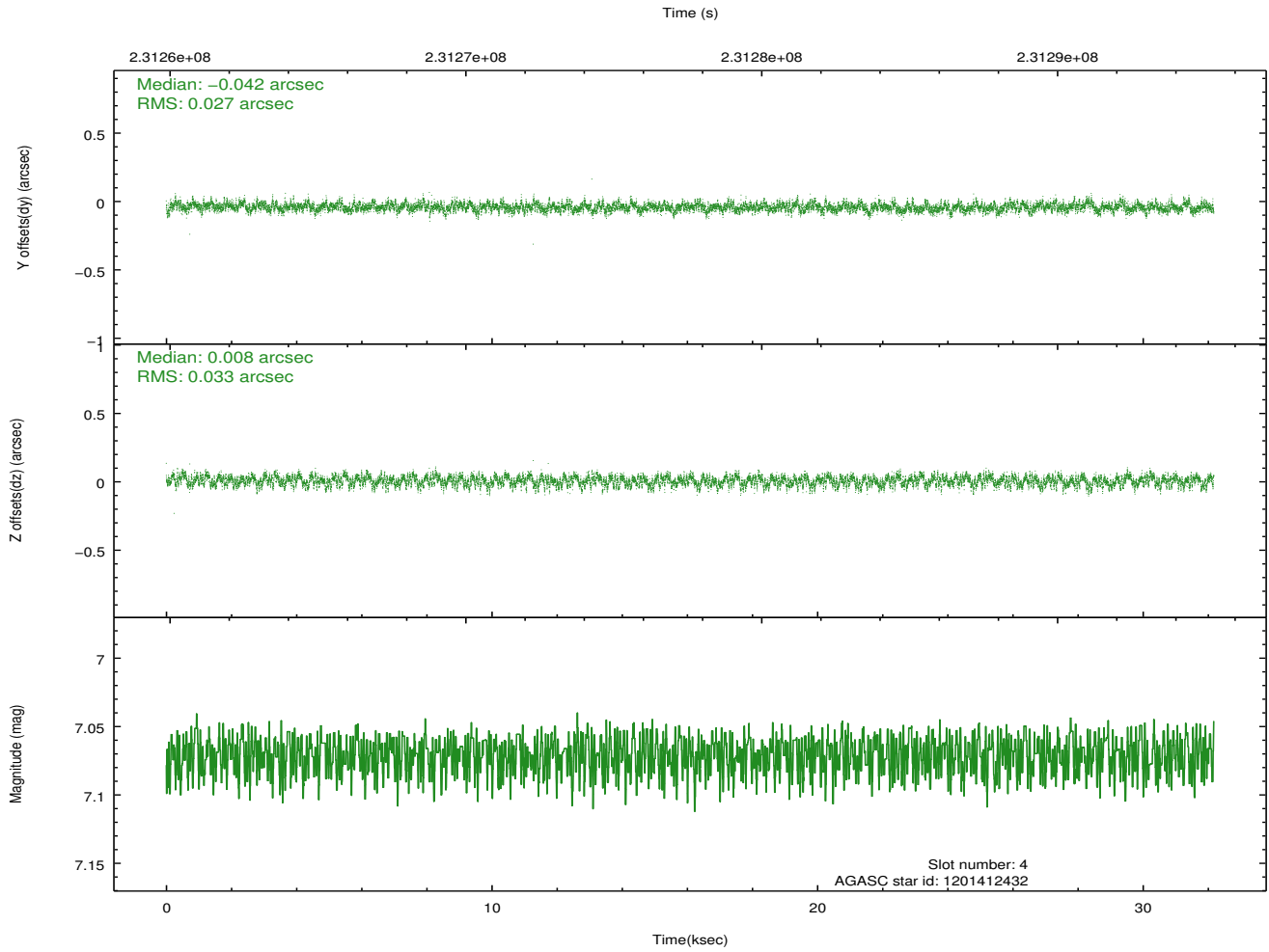
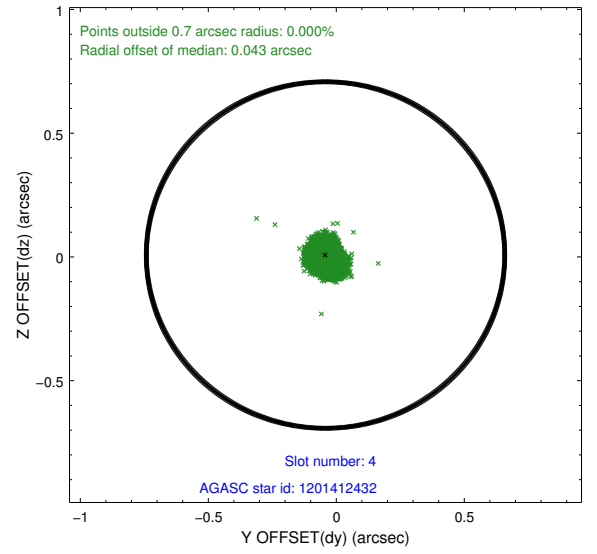
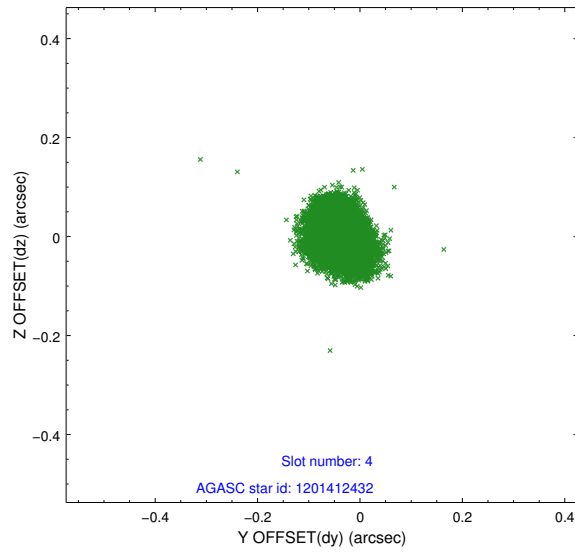
slot	status	id	mag	n_pts	med_dy	med_dz	dr1	dr2	ra	dec	mean_y	mean_z
0	FID	ACIS-S-2	7.10	7848	-0.064	-0.022	0.009	0.015	0.000000	0.000000	-759.48	-1731.83
1	FID	ACIS-S-4	7.21	7847	0.099	0.037	0.009	0.015	0.000000	0.000000	2153.90	176.71
2	FID	ACIS-S-5	7.23	7847	-0.067	-0.006	0.008	0.014	0.000000	0.000000	-1812.29	170.33
3	GUIDE	1201407840	7.96	15693	0.095	-0.034	0.061	0.096	83.696303	-70.172201	-290.75	-1575.48
4	GUIDE	1201412432	7.07	15696	-0.042	0.008	0.044	0.074	83.813525	-71.137747	2020.97	1023.72
5	GUIDE	1201541752	7.30	15696	0.010	0.106	0.049	0.081	85.373891	-70.033762	-2102.43	-484.15
6	GUIDE	1201542672	8.18	15689	0.027	-0.104	0.066	0.106	84.492488	-69.957531	-1531.13	-1447.16
7	GUIDE	1201409792	8.86	15687	-0.090	0.026	0.071	0.114	82.417975	-70.260186	1059.75	-2413.30

## 2.4 Star Slots

### 2.4.1 Slot 3

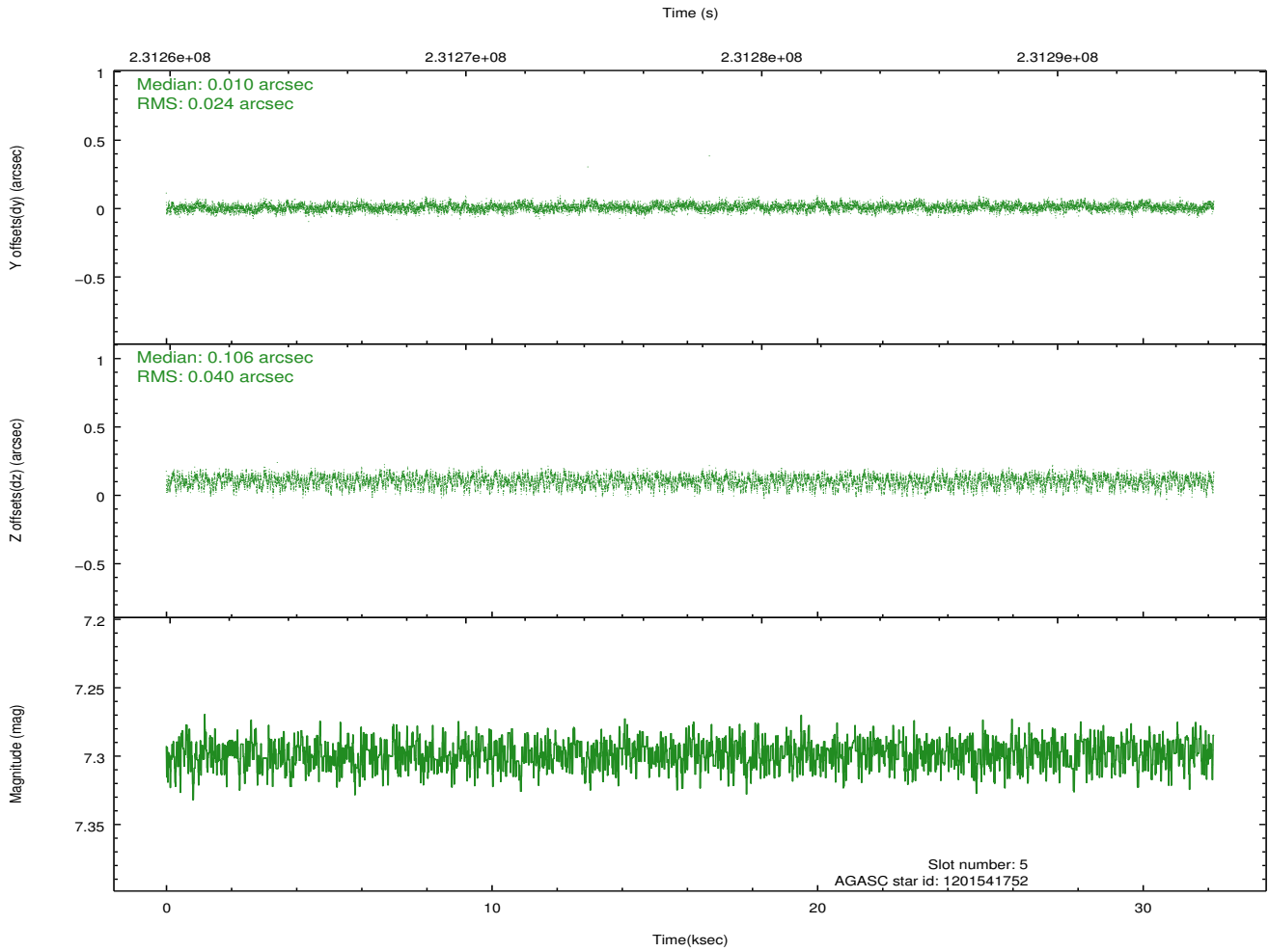
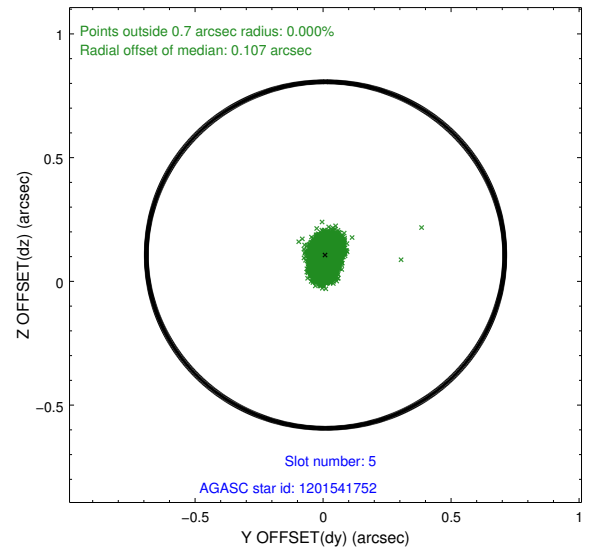
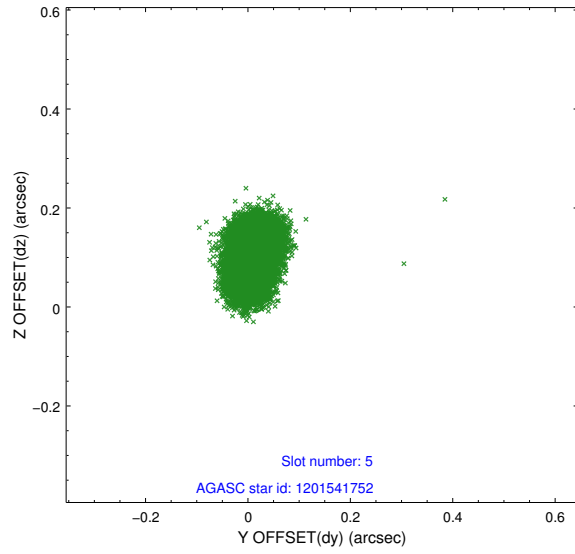


## 2.4.2 Slot 4

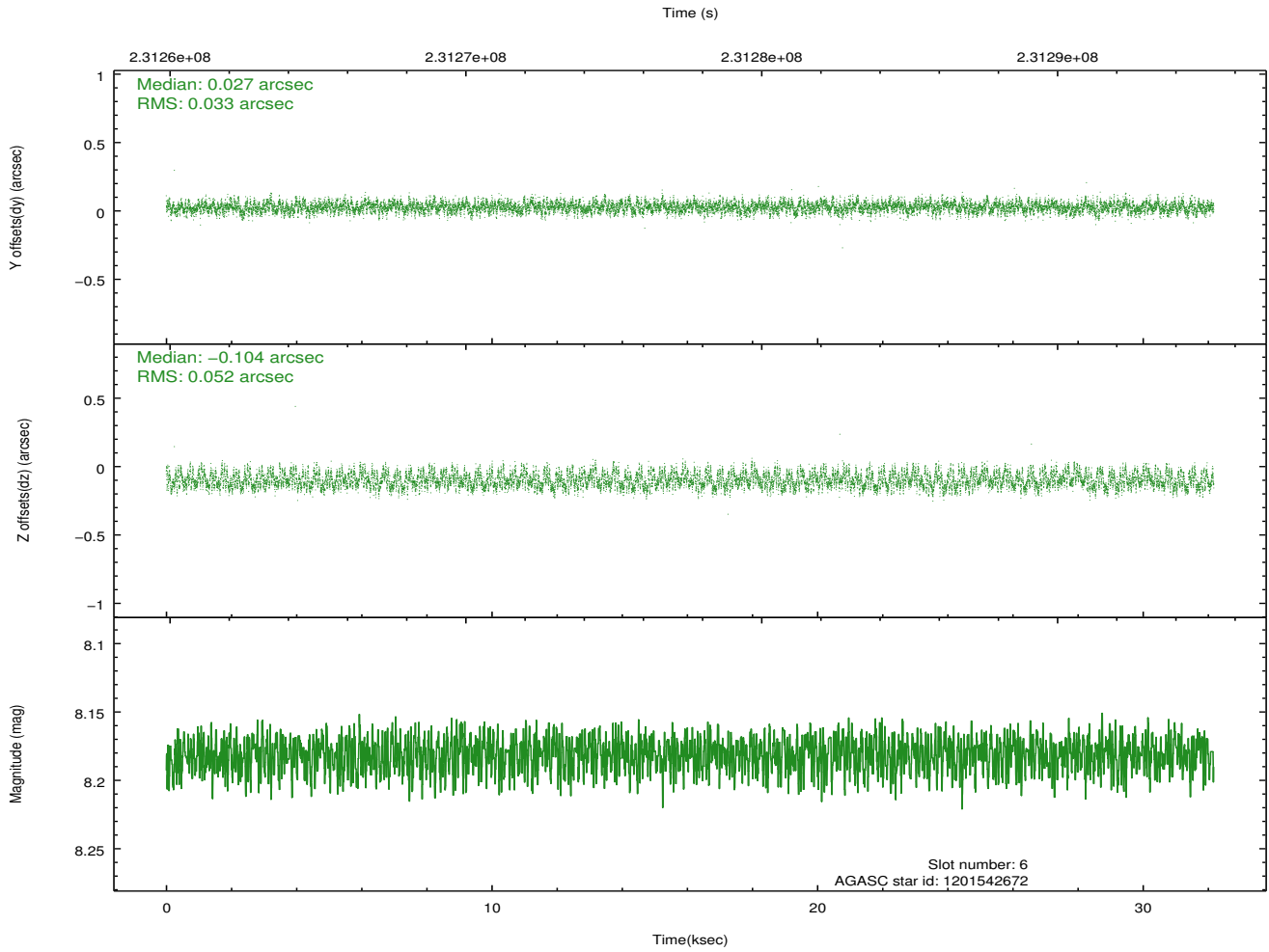
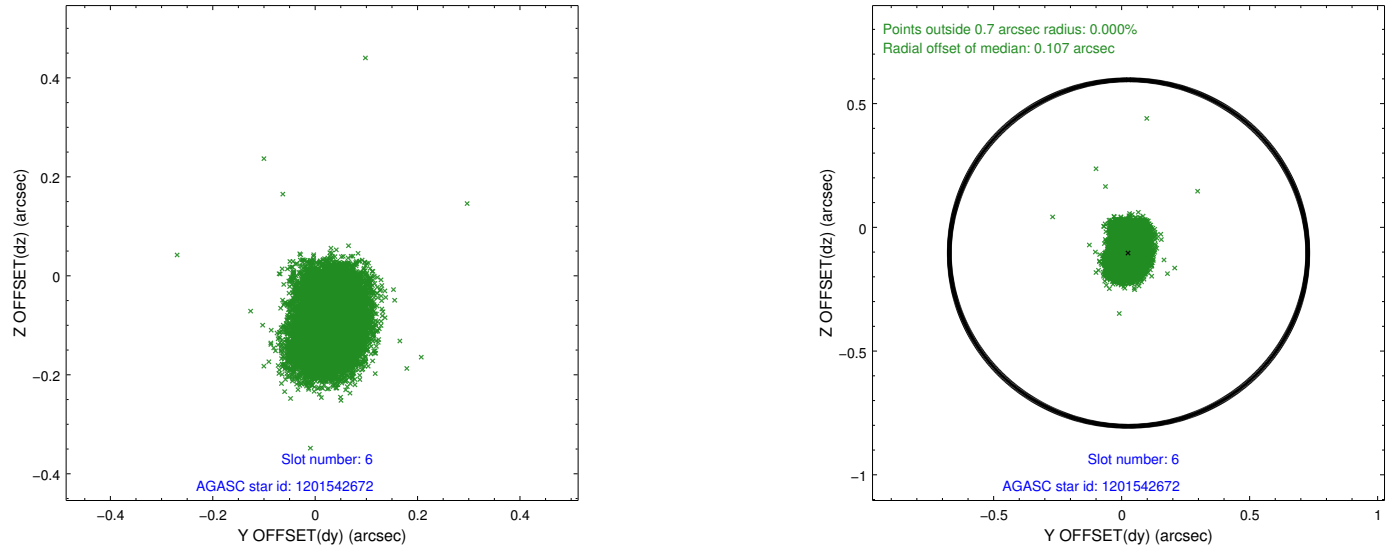




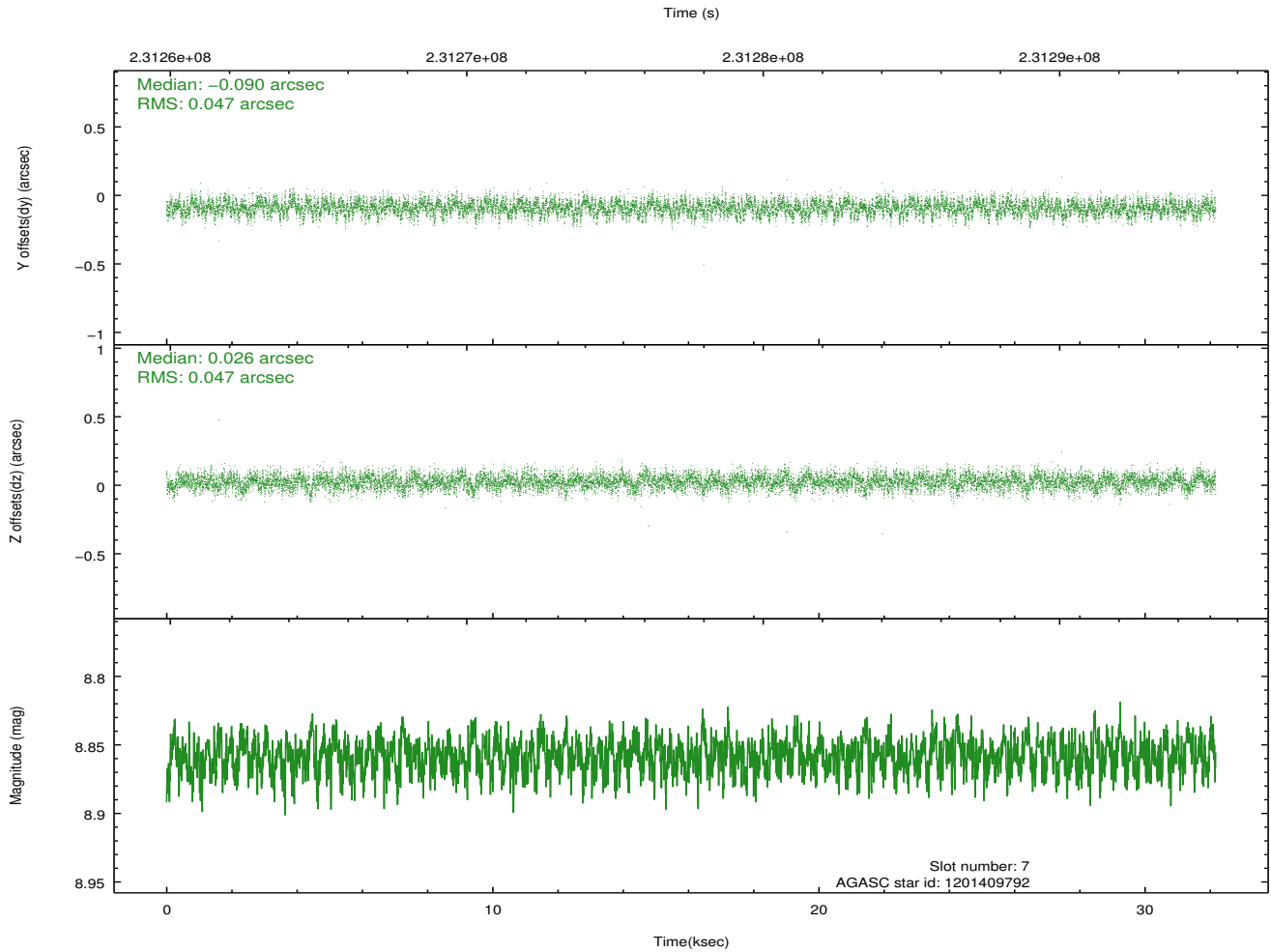
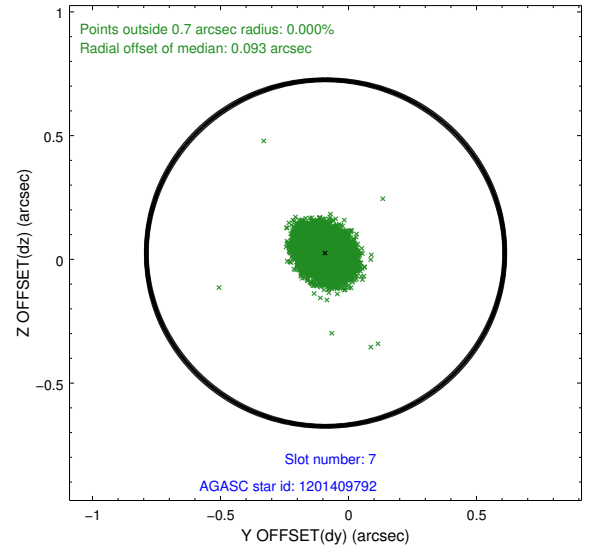
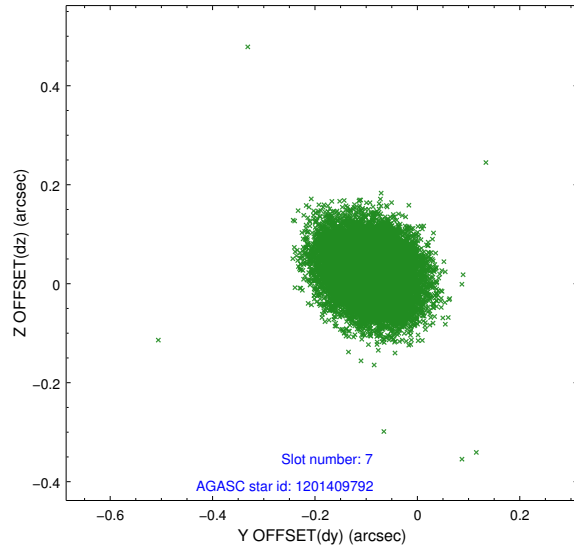
### 2.4.3 Slot 5



## 2.4.4 Slot 6

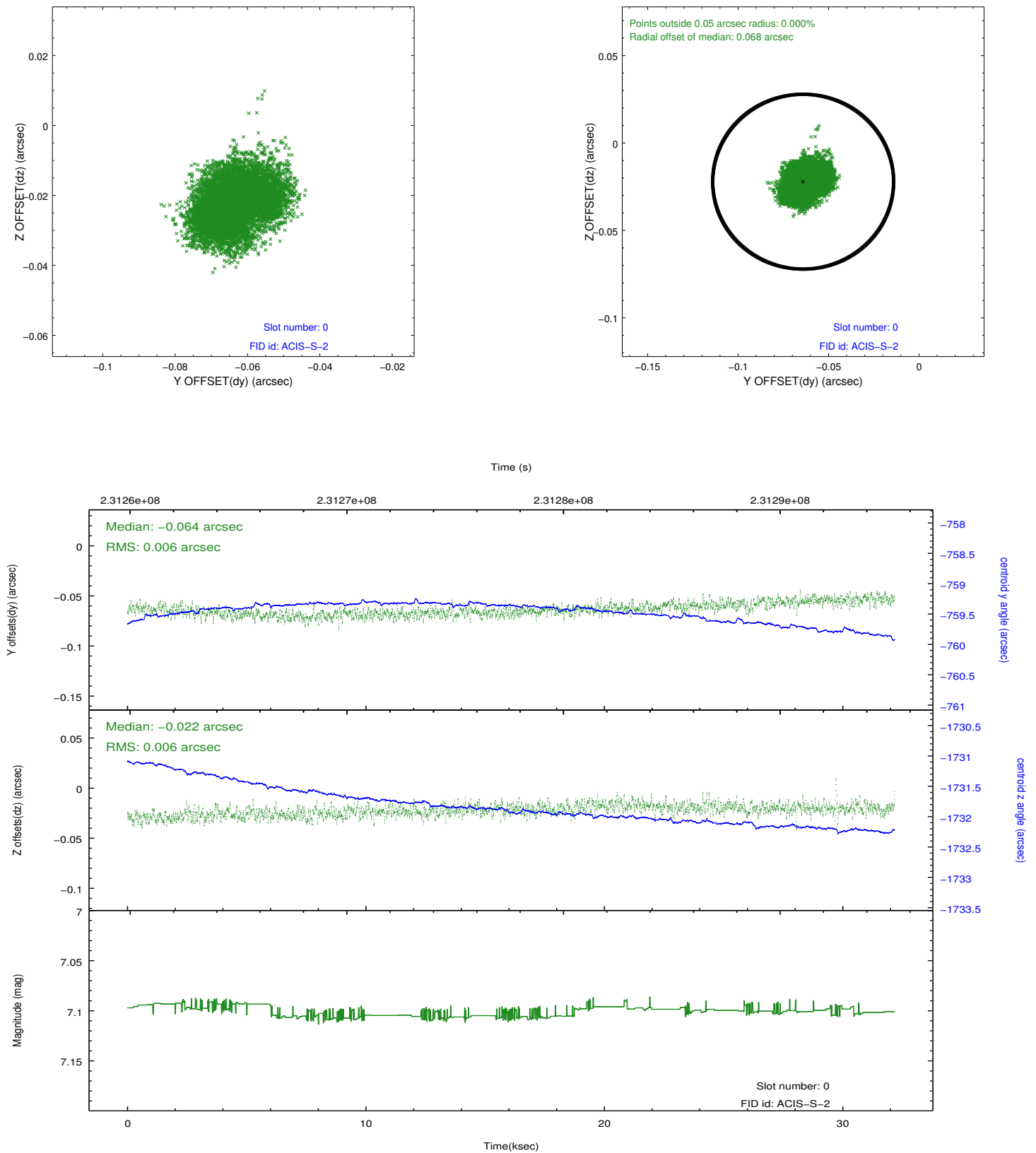


## 2.4.5 Slot 7

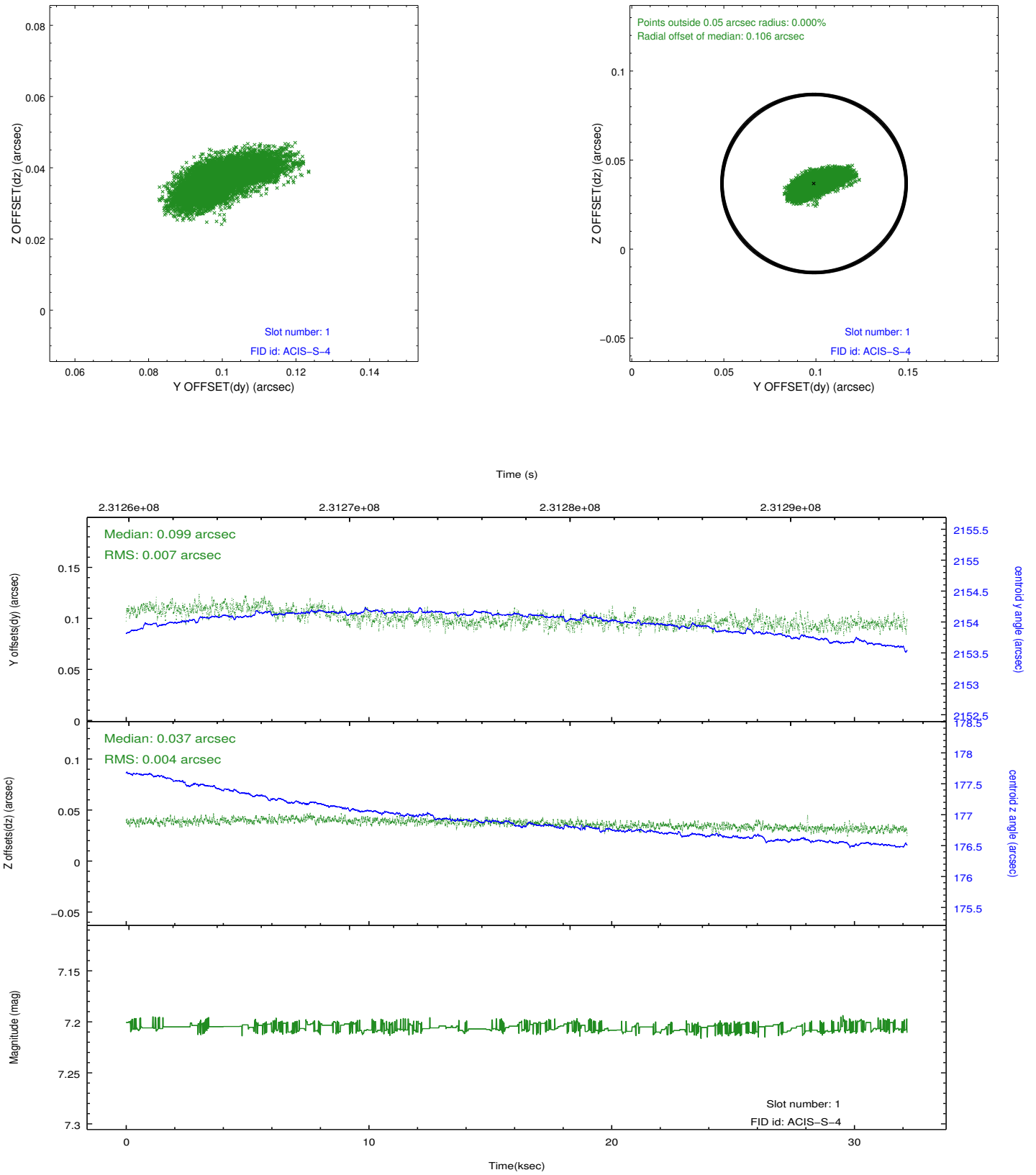


## 2.5 FID Slots

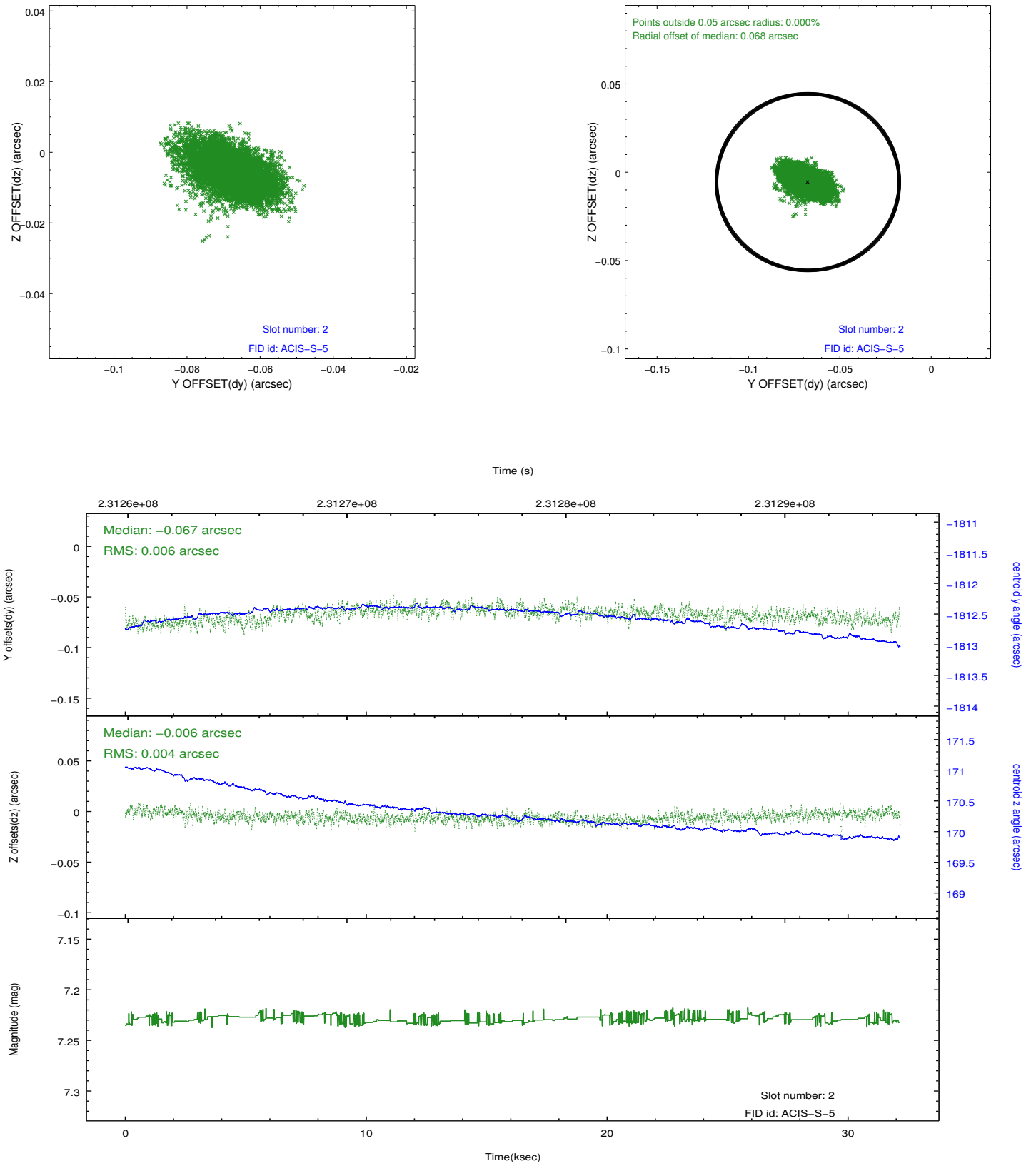
### 2.5.1 Slot 0



## 2.5.2 Slot 1



### 2.5.3 Slot 2



## A Summary

### A.1 Status

V&V Scientist	Beth Sundheim
V&V Date (YYYY-MM-DD)	2013.01.11
V&V Edition	1
V&V Disposition and Status	OK
V&V Charge Time	32.1732

### A.2 Comments