

V&V Reference Report

L2 ASCDS Version : 8.4.5

Observation 4526 - L2 Version 4
Chandra X-Ray Center

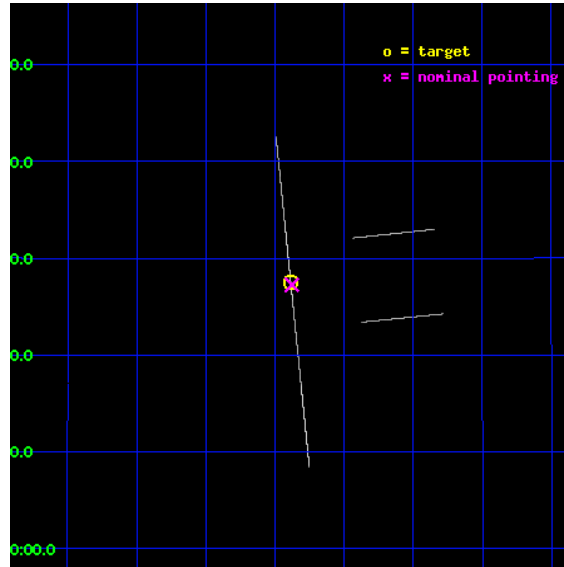
L2 Processing Date : Nov 12 2012

Contents

| | | |
|----------|-------------------------------|-----------|
| 1 | Front | 2 |
| 2 | OBI | 3 |
| 2.1 | OBI | 3 |
| 2.1.1 | Images | 3 |
| 2.1.2 | Parameters | 4 |
| 2.1.3 | Events | 4 |
| 2.2 | Compared Parameters | 5 |
| 2.3 | Aspect | 6 |
| 2.4 | Star Slots | 9 |
| 2.4.1 | Slot 3 | 9 |
| 2.4.2 | Slot 4 | 10 |
| 2.4.3 | Slot 5 | 11 |
| 2.4.4 | Slot 6 | 12 |
| 2.4.5 | Slot 7 | 13 |
| 2.5 | FID Slots | 14 |
| 2.5.1 | Slot 0 | 14 |
| 2.5.2 | Slot 1 | 15 |
| 2.5.3 | Slot 2 | 16 |
| A | Summary | 17 |
| A.1 | Status | 17 |
| A.2 | Comments | 17 |

1 Front

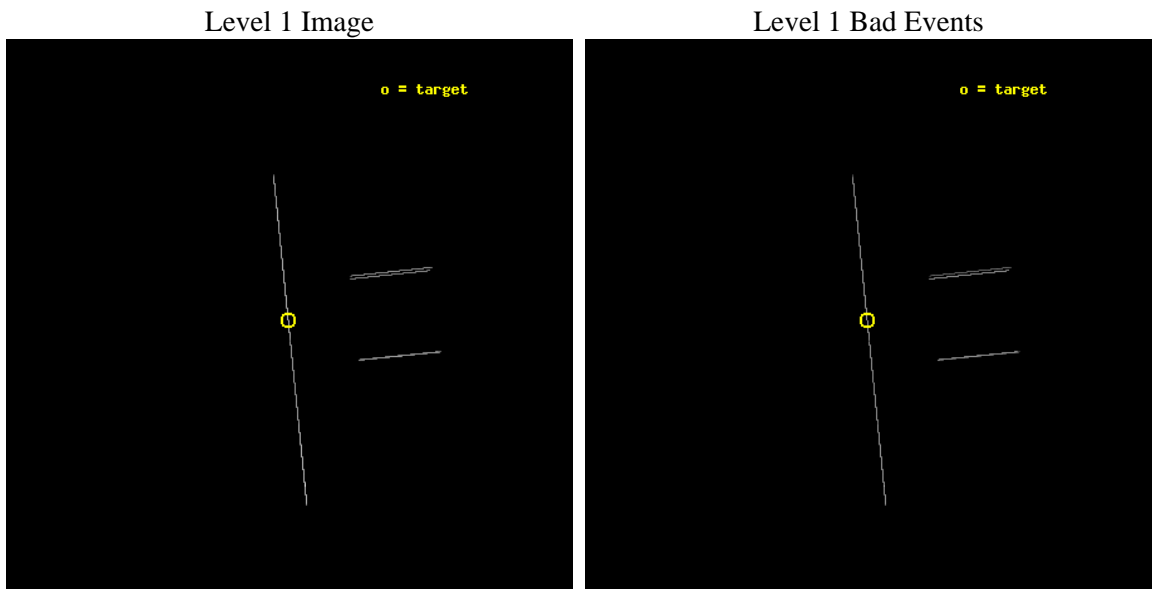
| | | |
|----------|-------------------------------------|---------------------------------------|
| seq_num | 300120 | Sequence number |
| obs_id | 4526 | Observation id |
| title | Timing the Orbit of RX J0806.3+1527 | Proposal title |
| observer | Dr. Tod Strohmayer | Principal investigator |
| object | RX J0806.3+1527 | Source name |
| ra_targ | 121.596667 | Observer's specified target RA [deg] |
| dec_targ | 15.458389 | Observer's specified target Dec [deg] |
| ra_nom | 121.59452925869 | Nominal RA [deg] |
| dec_nom | 15.45448560542 | Nominal Dec [deg] |
| roll_nom | 264.14074382728 | Nominal Roll [deg] |
| revision | 4 | Processing version of data |
| ontime | 10426.334003985 | Sum of GTIs [s] |
| livetime | 10385.606136782 | Livetime [s] |
| ontime2 | 10423.412249804 | Sum of GTIs [s] |
| ontime3 | 10423.414236665 | Sum of GTIs [s] |
| ontime5 | 10421.955513716 | Sum of GTIs [s] |
| ontime6 | 10423.415285051 | Sum of GTIs [s] |
| ontime7 | 10426.334003985 | Sum of GTIs [s] |
| ontime8 | 10426.334003687 | Sum of GTIs [s] |
| l2events | 125857 | Number of level 2 events |



2 OBI

2.1 OBI

2.1.1 Images



2.1.2 Parameters

| | | | | | |
|----------|---------------------|--------------------------------|----------------|-----------------|---|
| obi_num | 0 | Obi number | sched_exp_time | 10250.000000 | [s] Scheduled observation exposure time |
| ascdsver | 8.4.5 | Processing system revision | ontime | 10426.334003985 | Sum of GTIs [s] |
| caldsver | 4.5.2 | | ontime2 | 10423.412249804 | Sum of GTIs [s] |
| date | 2012-11-12T15:06:59 | Date and time of file creation | ontime3 | 10423.414236665 | Sum of GTIs [s] |
| revision | 4 | Processing version of data | ontime5 | 10421.955513716 | Sum of GTIs [s] |
| | | | ontime6 | 10423.415285051 | Sum of GTIs [s] |
| | | | ontime7 | 10426.334003985 | Sum of GTIs [s] |
| | | | ontime8 | 10426.334003687 | Sum of GTIs [s] |
| | | | l1events | 274936 | Number of level 1 events |

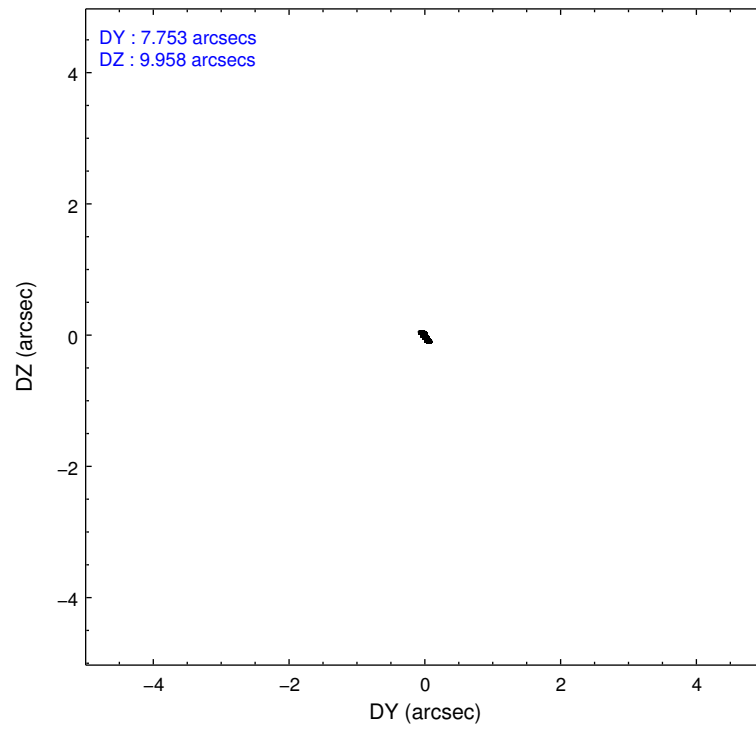
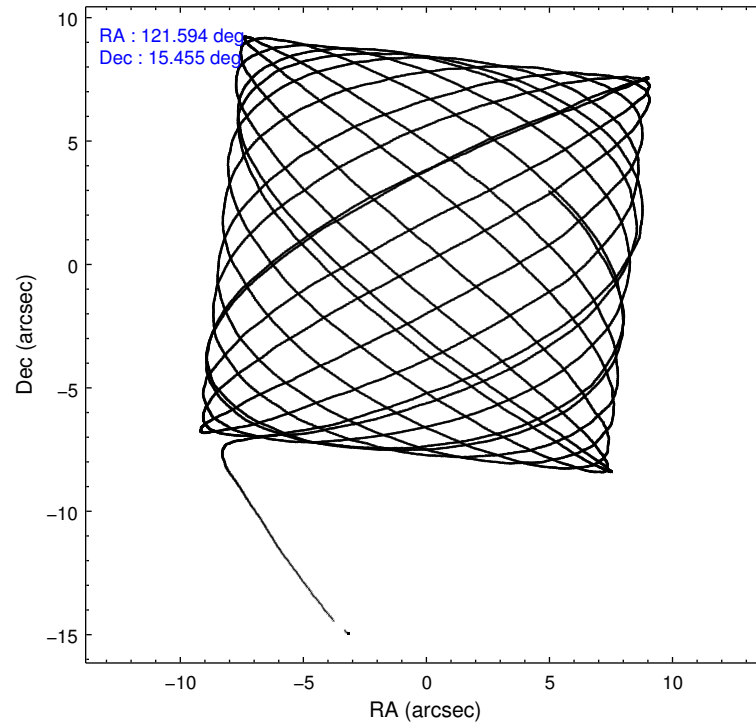
2.1.3 Events

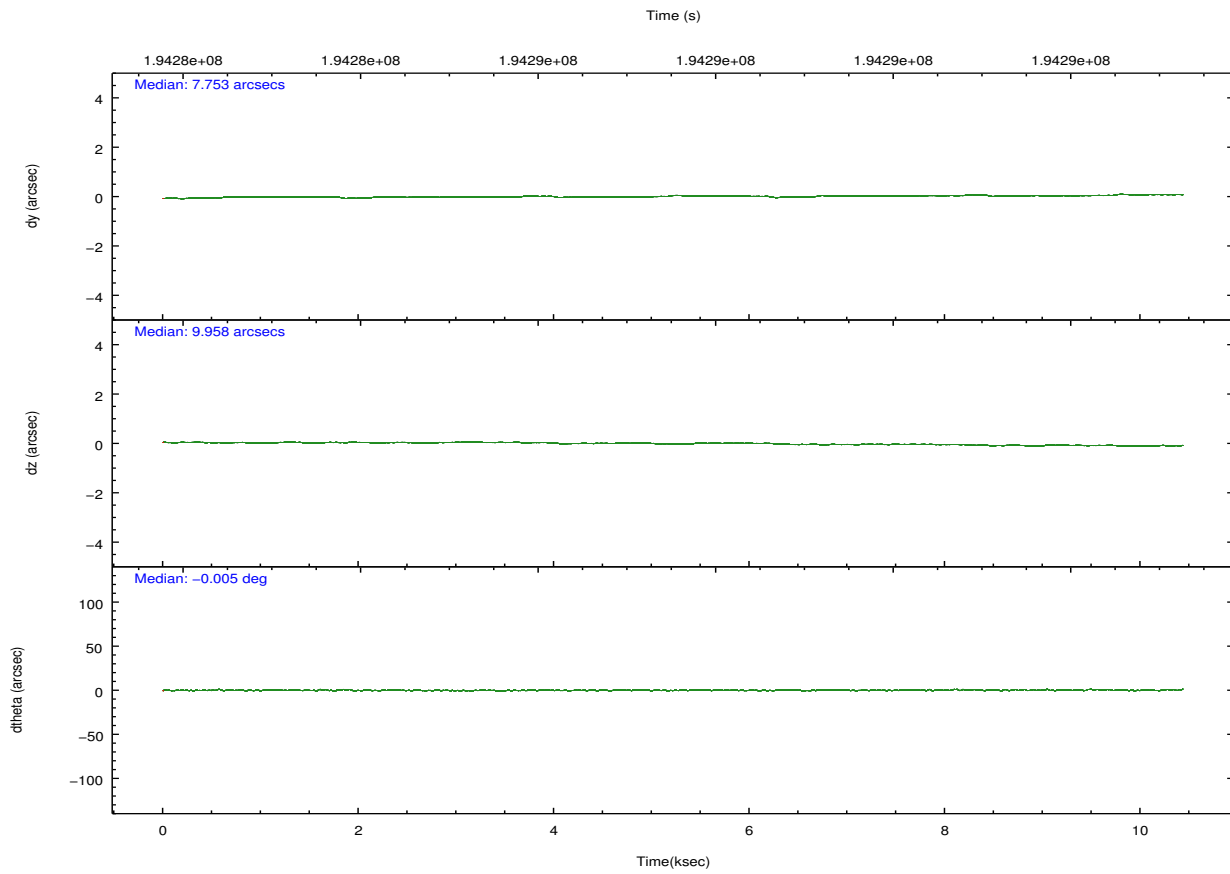
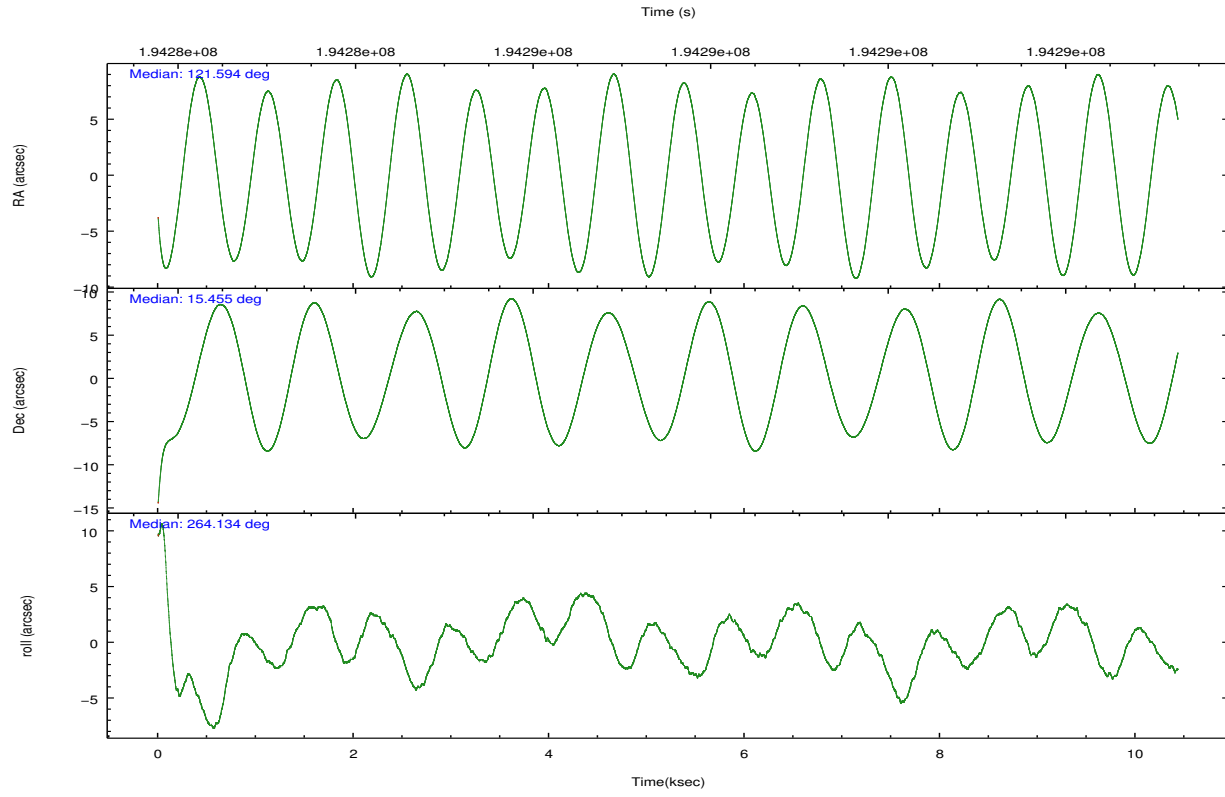
| | ccd 2 | ccd 3 | ccd 5 | ccd 6 | ccd 7 | ccd 8 | | ccd 2 | ccd 3 | ccd 5 | ccd 6 | ccd 7 | ccd 8 |
|-----------------|-------|-------|-------|-------|-------|-------|----------------|-------|-------|-------|-------|-------|-------|
| level 1 events | 24673 | 26414 | 96115 | 26178 | 60896 | 40660 | grade 0 events | 2206 | 2441 | 27258 | 2096 | 5161 | 5648 |
| rejected events | 13730 | 14170 | 20506 | 14109 | 20356 | 15899 | | 8% | 9% | 28% | 8% | 8% | 13% |
| rejected % | 55% | 53% | 21% | 53% | 33% | 39% | grade 1 events | 48 | 49 | 77 | 55 | 72 | 105 |
| | | | | | | | | 0% | 0% | 0% | 0% | 0% | 0% |
| | | | | | | | grade 2 events | 11586 | 12208 | 25656 | 11985 | 15015 | 15001 |
| | | | | | | | | 46% | 46% | 26% | 45% | 24% | 36% |
| | | | | | | | grade 3 events | 1622 | 2009 | 1246 | 1754 | 2229 | 2946 |
| | | | | | | | | 6% | 7% | 1% | 6% | 3% | 7% |
| | | | | | | | grade 4 events | 1656 | 1662 | 1181 | 1614 | 2271 | 2876 |
| | | | | | | | | 6% | 6% | 1% | 6% | 3% | 7% |
| | | | | | | | grade 5 events | 2665 | 2906 | 5980 | 3169 | 7442 | 4185 |
| | | | | | | | | 10% | 11% | 6% | 12% | 12% | 10% |
| | | | | | | | grade 6 events | 4890 | 5139 | 34717 | 5505 | 28706 | 9899 |
| | | | | | | | | 19% | 19% | 36% | 21% | 47% | 24% |
| | | | | | | | grade 7 events | 0 | 0 | 0 | 0 | 0 | 0 |
| | | | | | | | | 0% | 0% | 0% | 0% | 0% | 0% |

2.2 Compared Parameters

| Parameter | Planned | Actual | Parameter | Planned | Actual |
|-----------------------------------|---------------------|----------------------|---------------------------------------|-----------|---------|
| Instrument | ACIS | ACIS | Obspar format version number | 7 | 7 |
| Detector | ACIS-235678 | ACIS-235678 | Obspar file type | PREDICTED | ACTUAL |
| Grating | NONE | NONE | Obspar update status | NONE | UPDATED |
| Data mode | CC33_GRADED | CC33_GRADED | Number of optional ACIS chips dropped | 0 | 0 |
| Observation mode | POINTING | POINTING | On-chip summing requested | N | N |
| [deg] Pointing RA | 121.582602 | 121.5945292586914 | Subarray requested | NONE | NONE |
| [deg] Pointing Dec | 15.479256 | 15.45448560541976 | Alternating exposures requested | N | N |
| [deg] Pointing Roll | 263.987285 | 264.1407438272761 | [s] Primary exposure time | 0.000000 | 0 |
| [mm] SIM focus pos | -0.684267 | -0.6828225247311905 | | | |
| [mm] SIM defocus | 0 | 0.001444936568705701 | | | |
| [mm] SIM translation stage pos | -190.132523 | -190.1400660498719 | | | |
| [mm] SIM translation stage offset | 0 | 0.00754346686406393 | | | |
| [s] Observation start time (MET) | 194282495.184000 | 194281499.34035 | | | |
| Observation start date | 2004-02-27T15:20:31 | 2004-02-27T15:04:59 | | | |
| [s] Observation end time (MET) | 194292745.184000 | 194293586.65338 | | | |
| Observation end date | 2004-02-27T18:11:21 | 2004-02-27T18:26:26 | | | |
| Read mode | CONTINUOUS | CONTINUOUS | | | |

2.3 Aspect



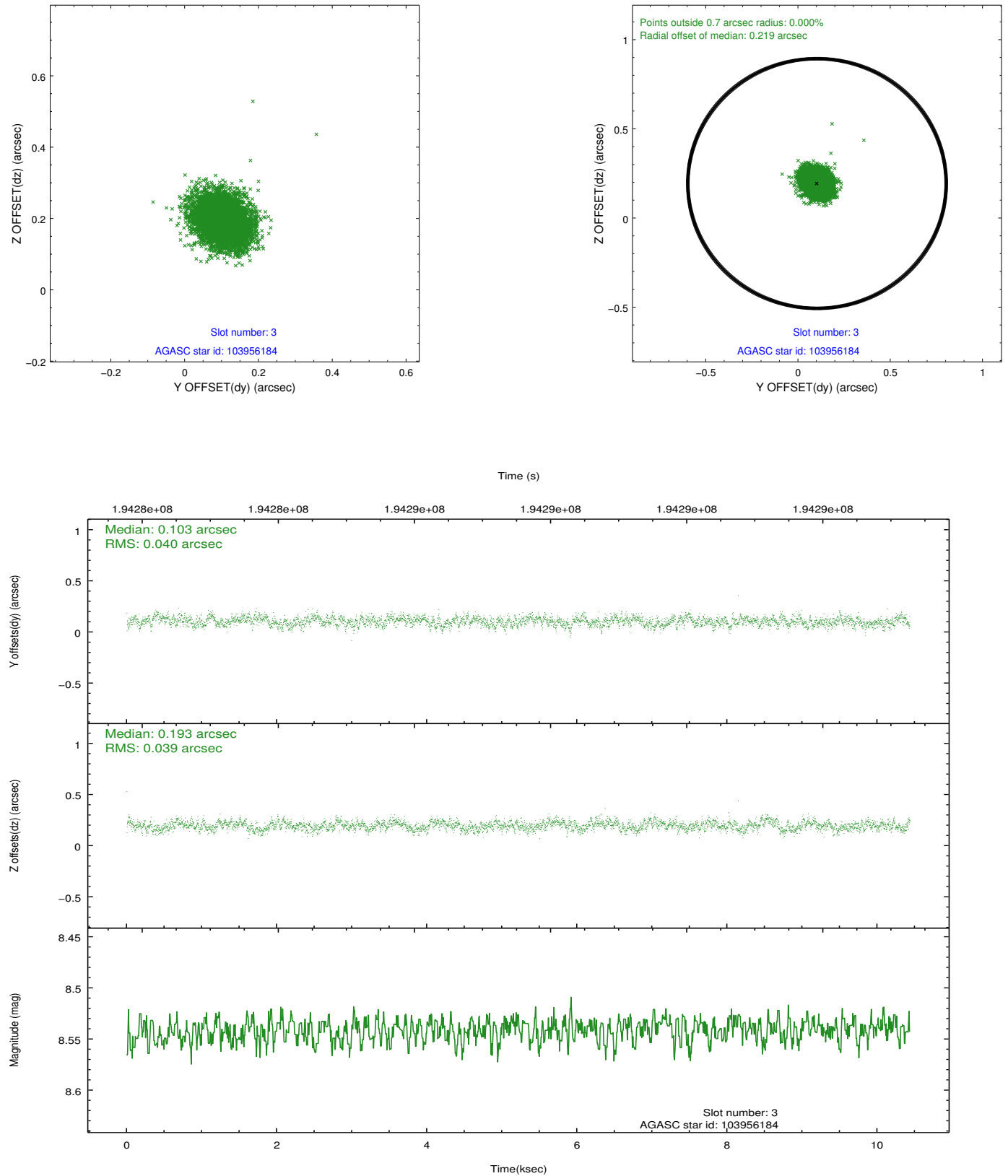


Slot Statistics

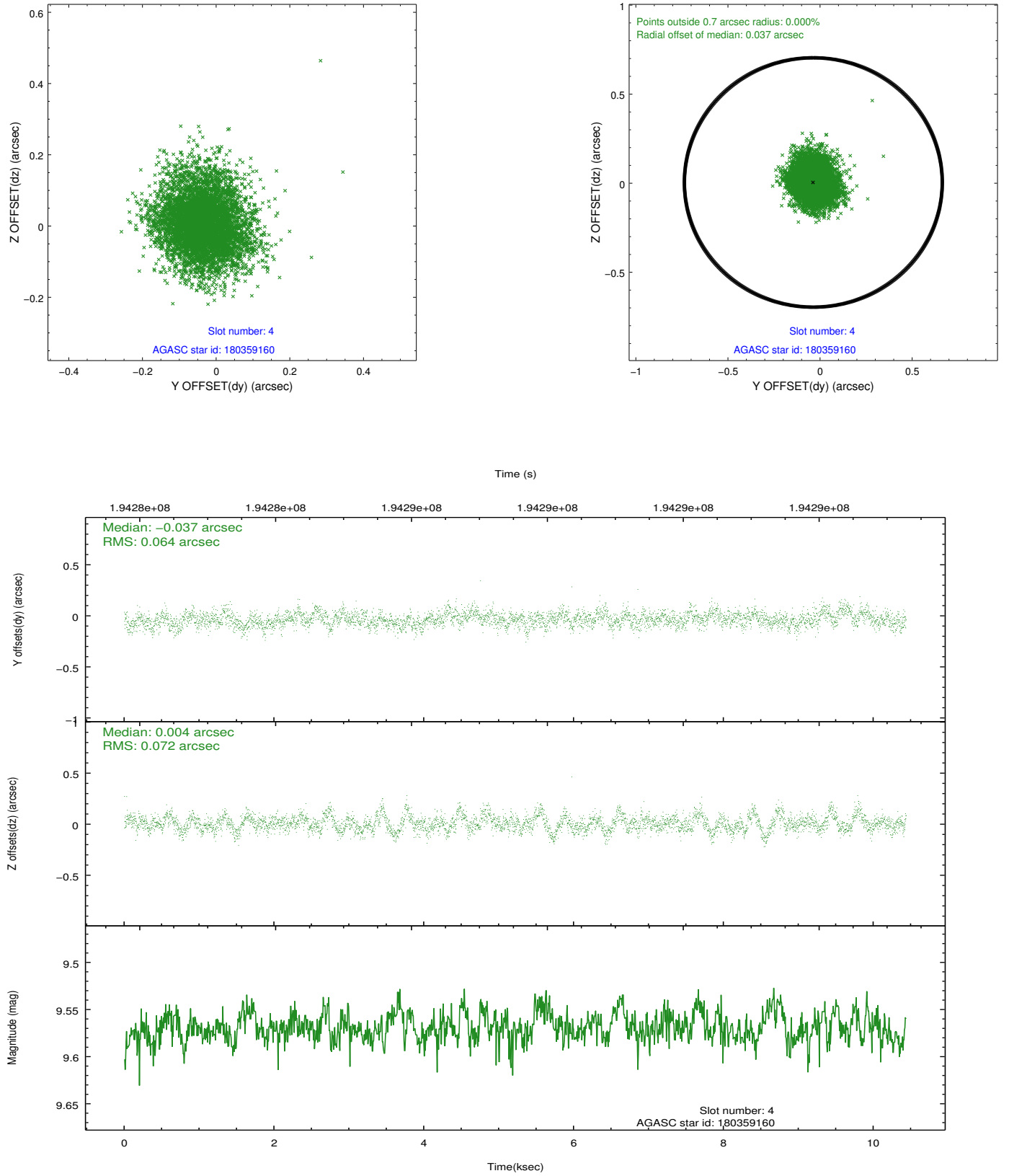
| slot | status | id | mag | n_pts | med_dy | med_dz | dr1 | dr2 | ra | dec | mean_y | mean_z |
|------|--------|-----------|------|-------|--------|--------|-------|-------|------------|-----------|----------|----------|
| 0 | FID | ACIS-S-2 | 7.10 | 2543 | -0.041 | -0.022 | 0.007 | 0.012 | 0.000000 | 0.000000 | -760.53 | -1731.23 |
| 1 | FID | ACIS-S-4 | 7.20 | 2542 | 0.090 | 0.026 | 0.006 | 0.011 | 0.000000 | 0.000000 | 2152.61 | 176.85 |
| 2 | FID | ACIS-S-5 | 7.23 | 2542 | -0.080 | 0.005 | 0.007 | 0.012 | 0.000000 | 0.000000 | -1812.81 | 170.98 |
| 3 | GUIDE | 103956184 | 8.54 | 5087 | 0.103 | 0.193 | 0.059 | 0.095 | 122.093586 | 14.853591 | 2051.75 | 2004.53 |
| 4 | GUIDE | 180359160 | 9.57 | 5083 | -0.037 | 0.004 | 0.102 | 0.167 | 121.837257 | 16.020694 | -2030.92 | 672.39 |
| 5 | GUIDE | 180367416 | 9.11 | 5085 | -0.087 | -0.062 | 0.086 | 0.141 | 120.920648 | 15.525818 | 70.14 | -2301.20 |
| 6 | GUIDE | 180370112 | 8.38 | 5087 | 0.041 | -0.150 | 0.060 | 0.096 | 121.144488 | 15.364256 | 570.88 | -1470.31 |
| 7 | GUIDE | 180372496 | 7.91 | 5084 | -0.020 | 0.013 | 0.059 | 0.097 | 121.745221 | 15.155380 | 1100.32 | 684.11 |

2.4 Star Slots

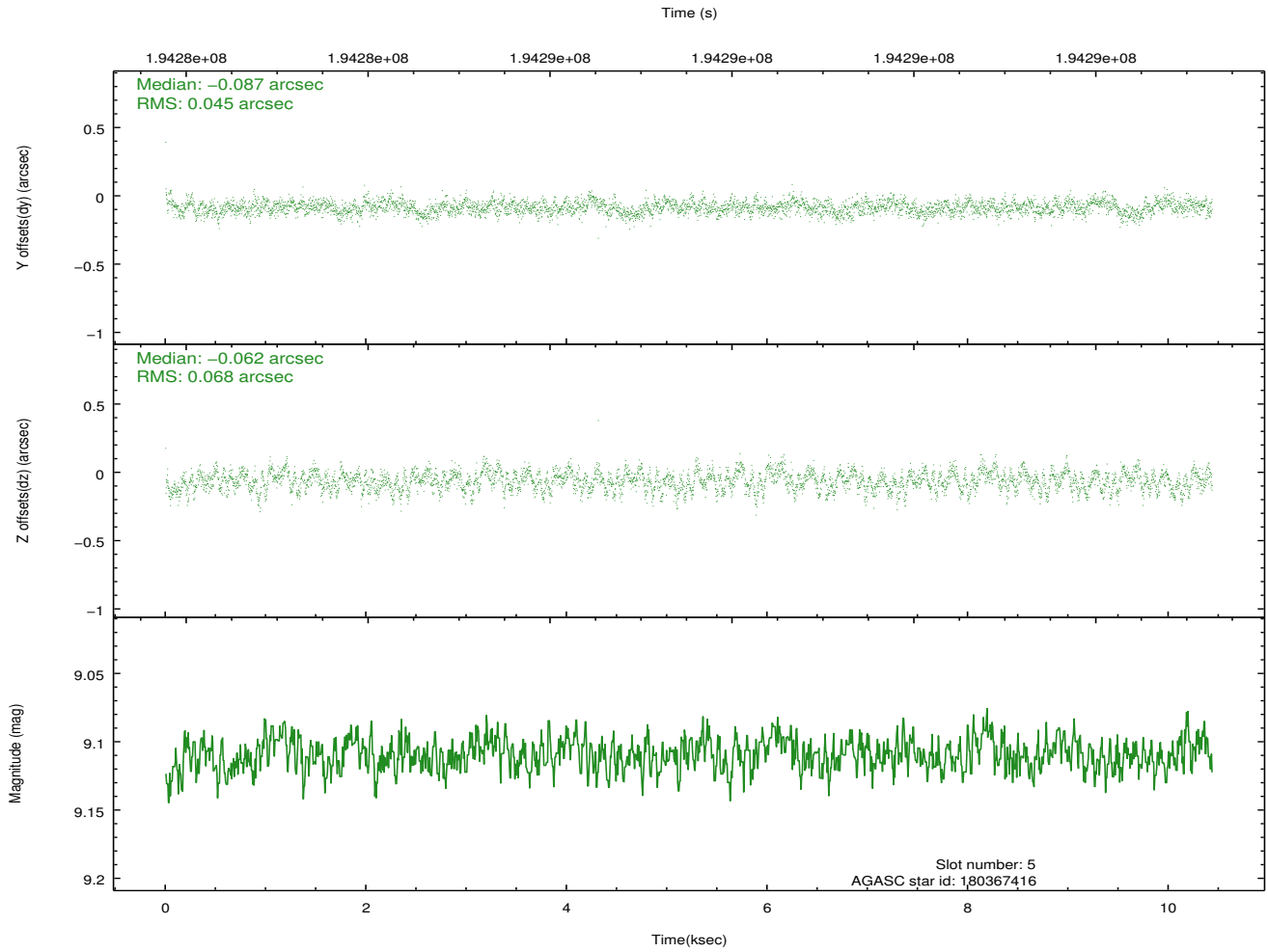
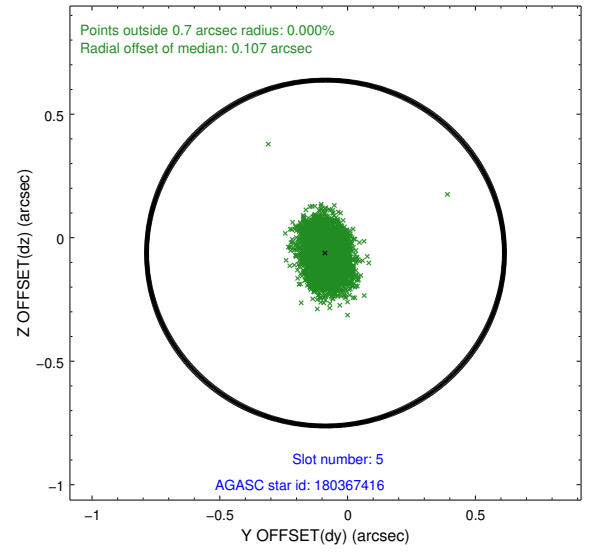
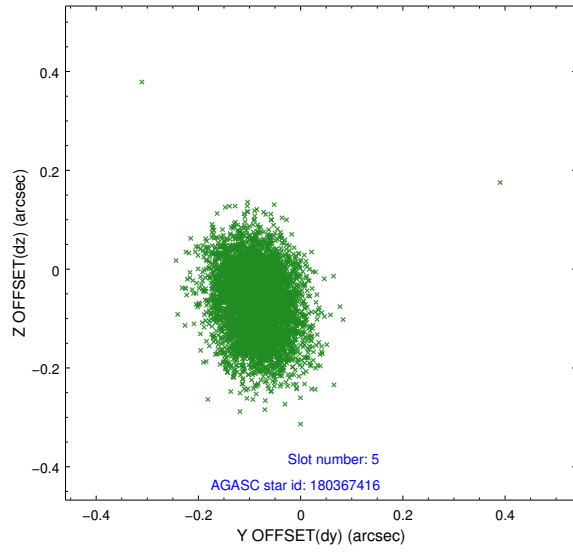
2.4.1 Slot 3



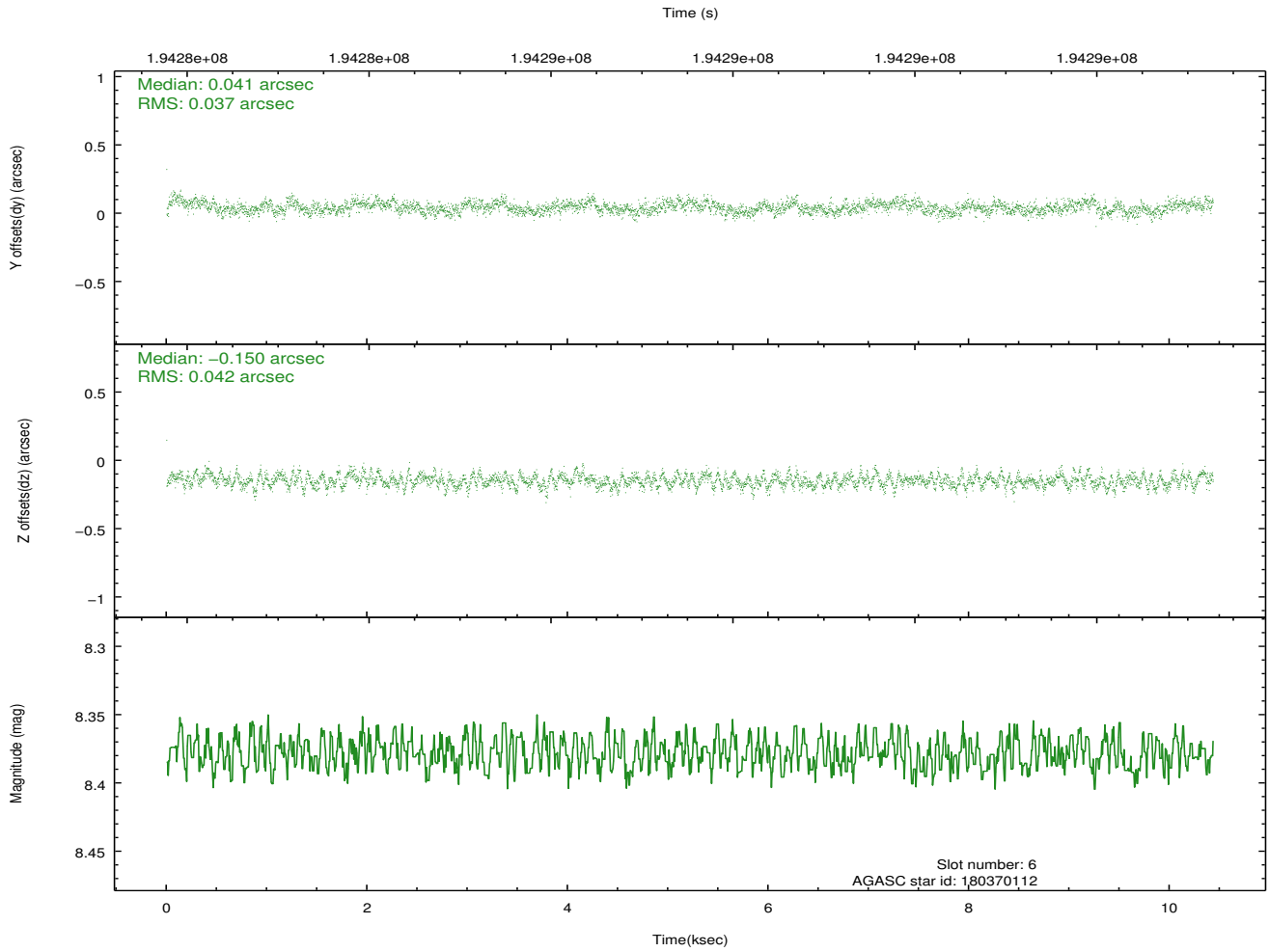
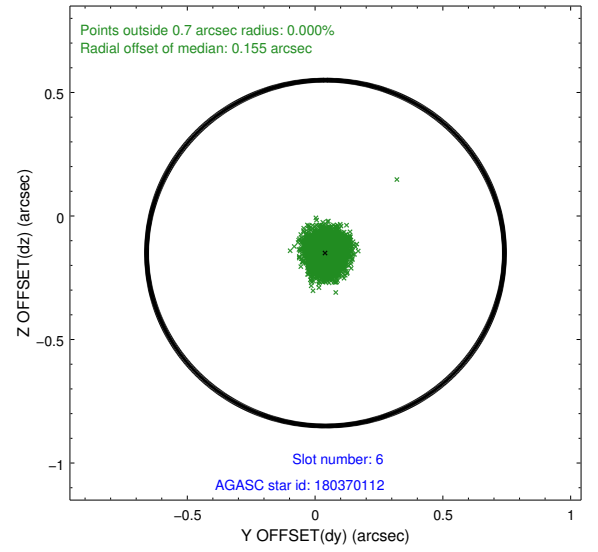
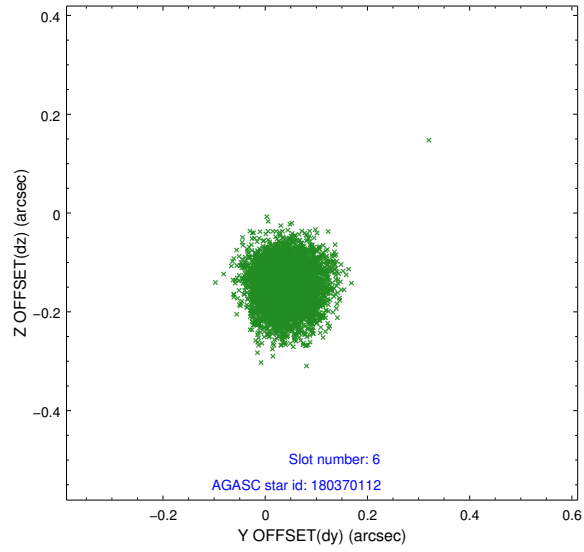
2.4.2 Slot 4



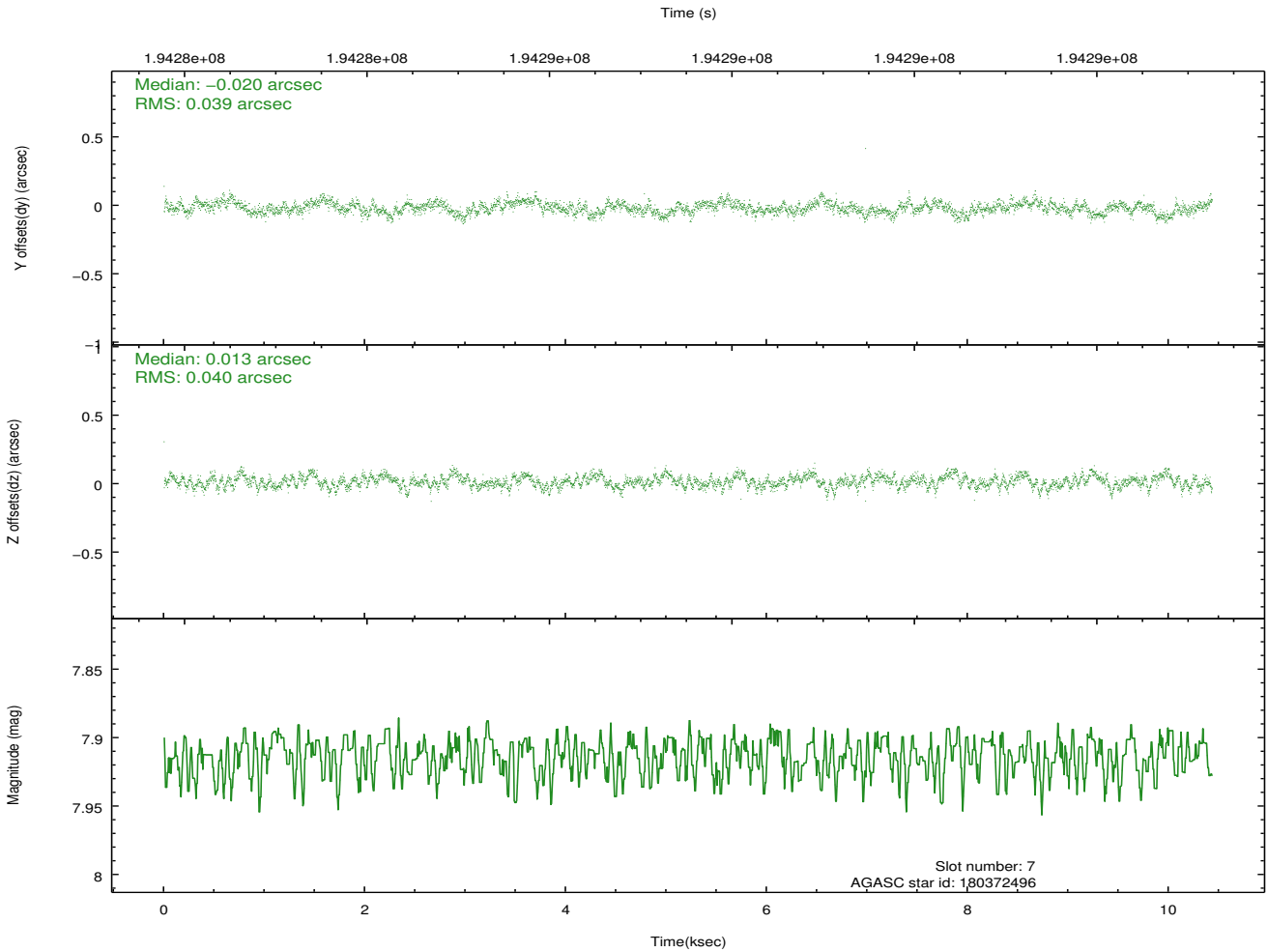
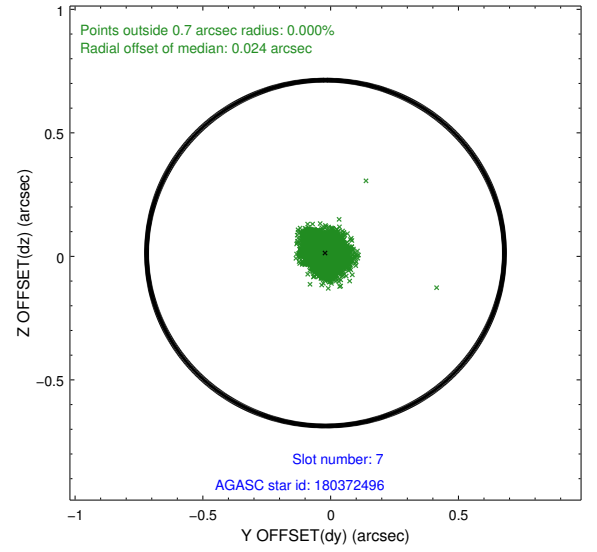
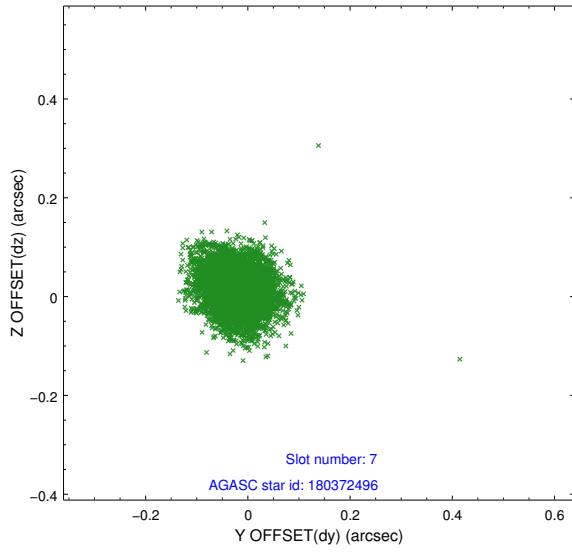
2.4.3 Slot 5



2.4.4 Slot 6

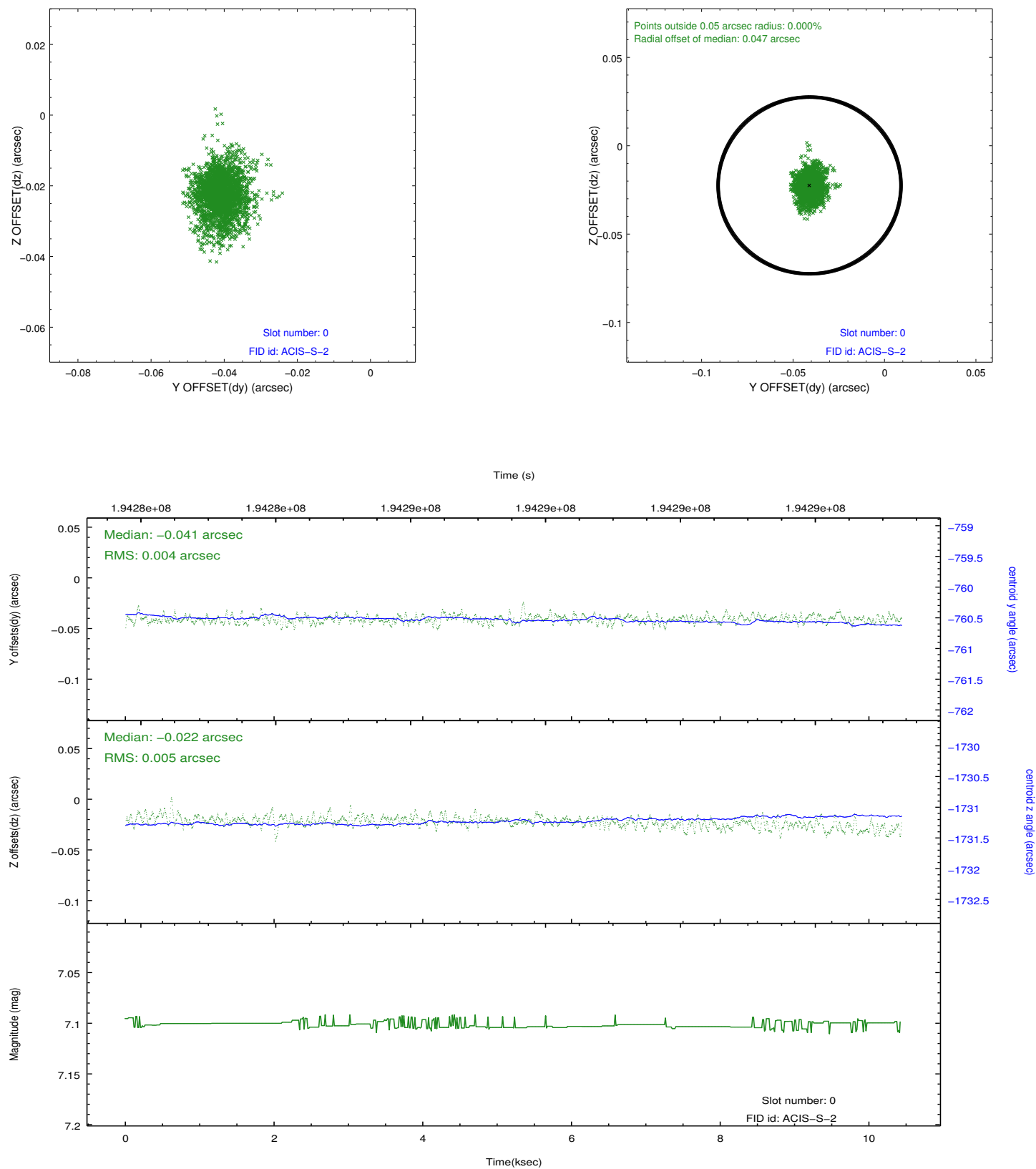


2.4.5 Slot 7

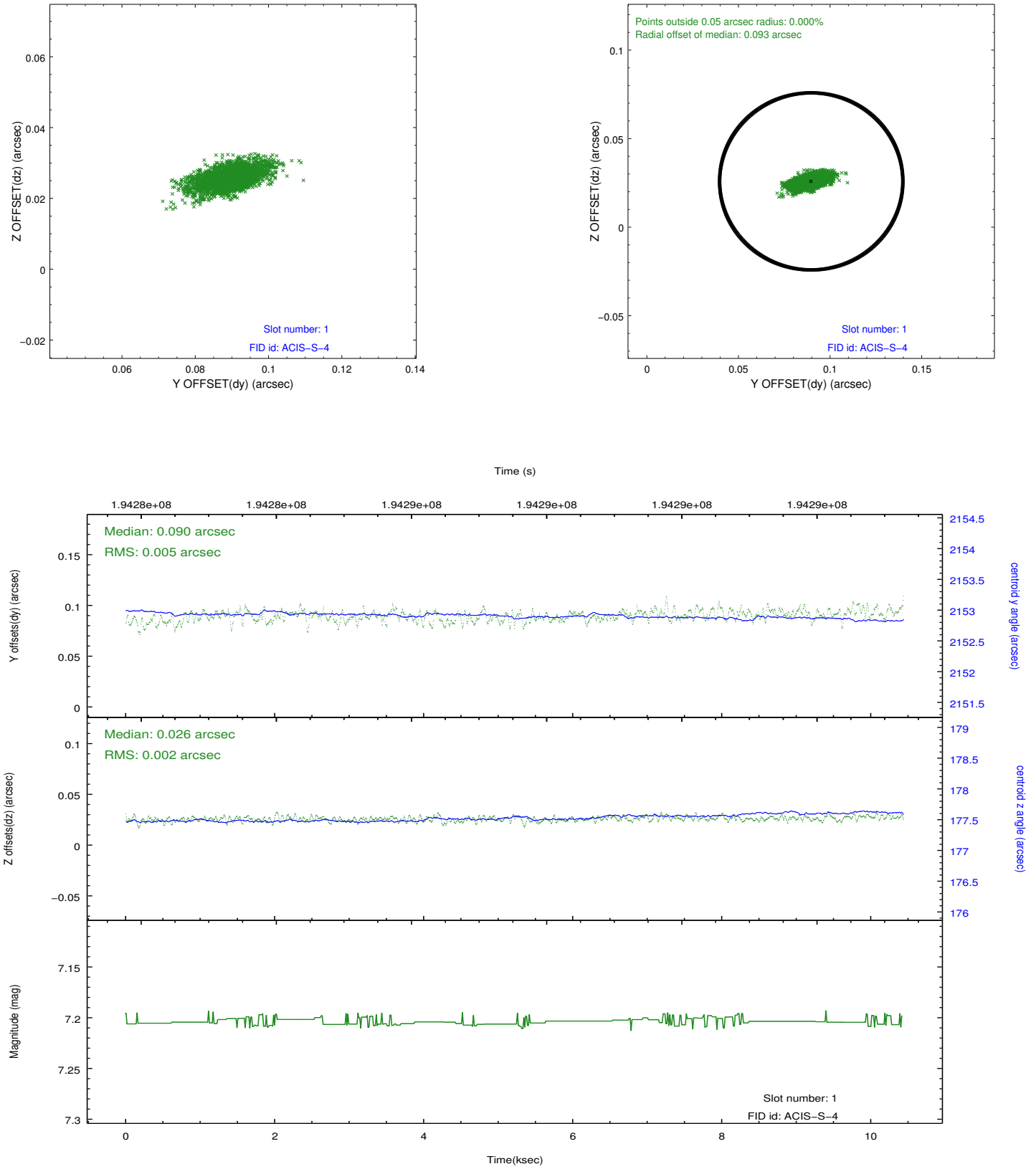


2.5 FID Slots

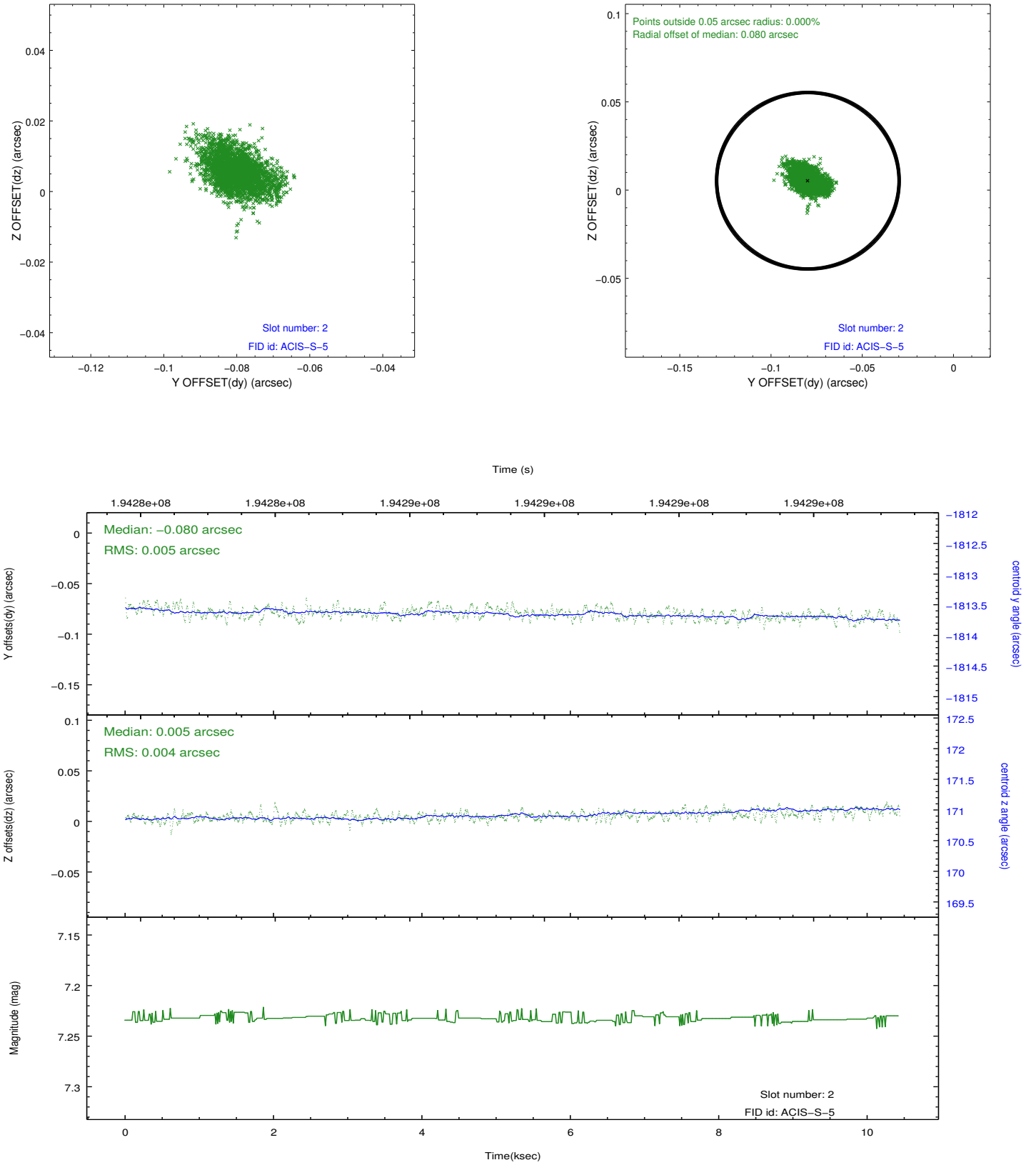
2.5.1 Slot 0



2.5.2 Slot 1



2.5.3 Slot 2



A Summary

A.1 Status

| | |
|----------------------------|-------------|
| V&V Scientist | Joy Nichols |
| V&V Date (YYYY-MM-DD) | 2012.12.12 |
| V&V Edition | 1 |
| V&V Disposition and Status | OK |
| V&V Charge Time | 10.43 |

A.2 Comments