

V&V Reference Report

L2 ASCDS Version : 7.6.7.2

Observation 4526 - L2 Version 3
Chandra X-Ray Center

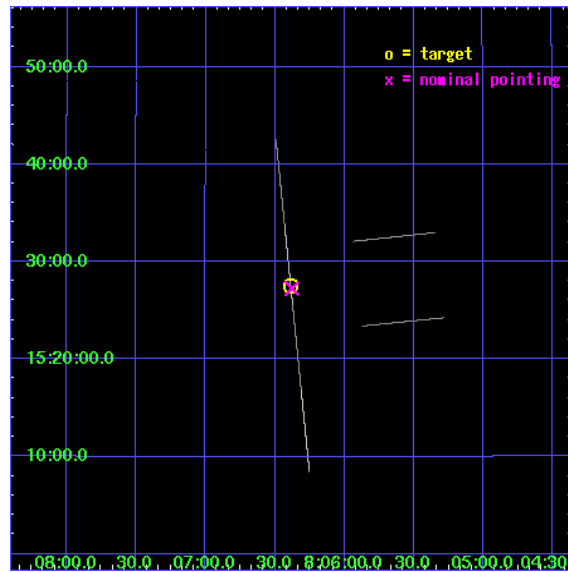
L2 Processing Date : Apr 11 2008

Contents

1	Front	2
2	OBI	3
2.1	OBI	3
2.1.1	Images	3
2.1.2	Parameters	4
2.1.3	Events	4
2.2	Compared Parameters	5
2.3	Aspect	6
2.4	Star Slots	9
2.4.1	Slot 3	9
2.4.2	Slot 4	10
2.4.3	Slot 5	11
2.4.4	Slot 6	12
2.4.5	Slot 7	13
2.5	FID Slots	14
2.5.1	Slot 0	14
2.5.2	Slot 1	15
2.5.3	Slot 2	16
A	Summary	17
A.1	Status	17
A.2	Comments	17

1 Front

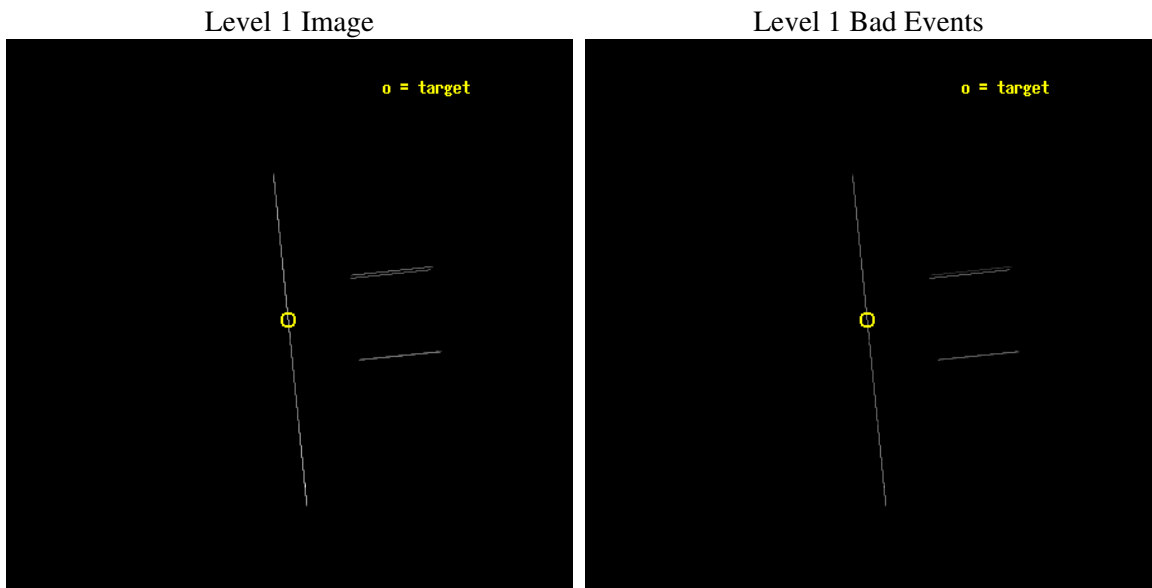
seq_num	300120
obs_id	4526
title	Timing the Orbit of RX J0806.3+1527
observer	Dr. Tod Strohmayer
object	RX J0806.3+1527
ra_targ	121.596667
dec_targ	15.458389
ra_nom	121.59453227913
dec_nom	15.454513230222
roll_nom	264.14074301562
revision	3
ontime	10426.333996415
livetime	10385.606129242
ontime2	10423.412253797
ontime3	10423.414230227
ontime5	10421.955509394
ontime6	10423.415280551
ontime7	10426.333996415
ontime8	10426.333996177
l2events	125355



2 OBI

2.1 OBI

2.1.1 Images



2.1.2 Parameters

obi_num	0
ascdsver	7.6.11.6
caldbver	3.4.4
date	2008-04-11T14:56:23
revision	3

sched_exp_time	10250.000000
ontime	10426.333996415
ontime2	10423.412253797
ontime3	10423.414230227
ontime5	10421.955509394
ontime6	10423.415280551
ontime7	10426.333996415
ontime8	10426.333996177
l1events	274936

2.1.3 Events

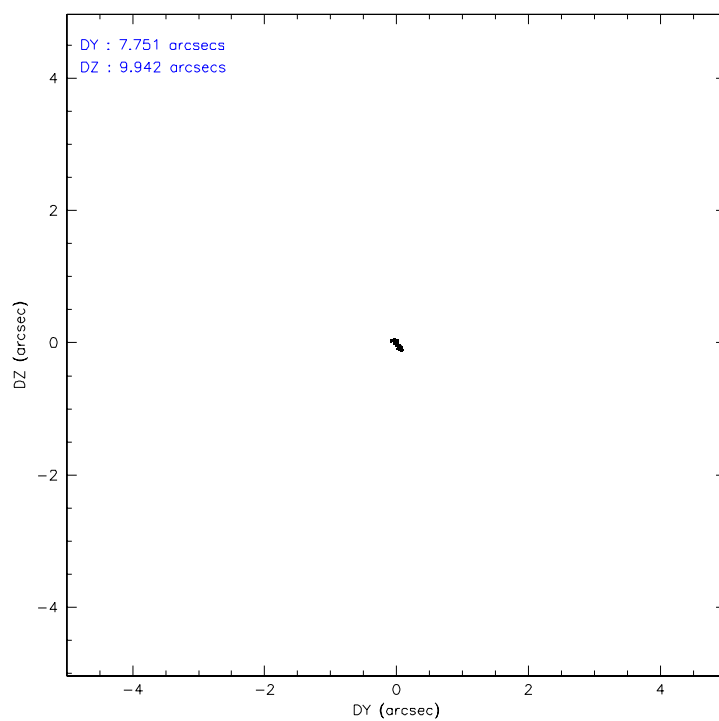
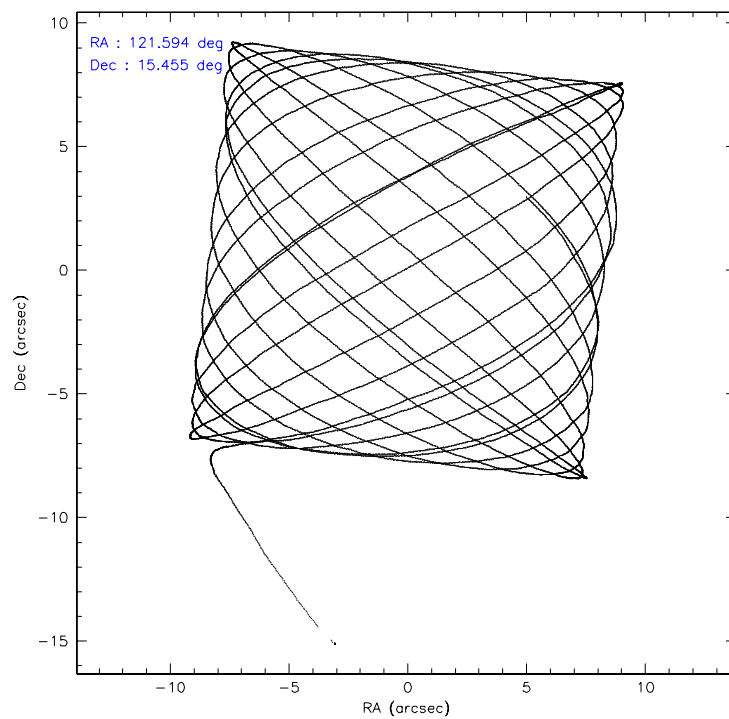
	ccd 2	ccd 3	ccd 5	ccd 6	ccd 7	ccd 8
level 1 events	24673	26414	96115	26178	60896	40660
rejected events	13730	14169	20507	14109	20355	15901
rejected %	55%	53%	21%	53%	33%	39%

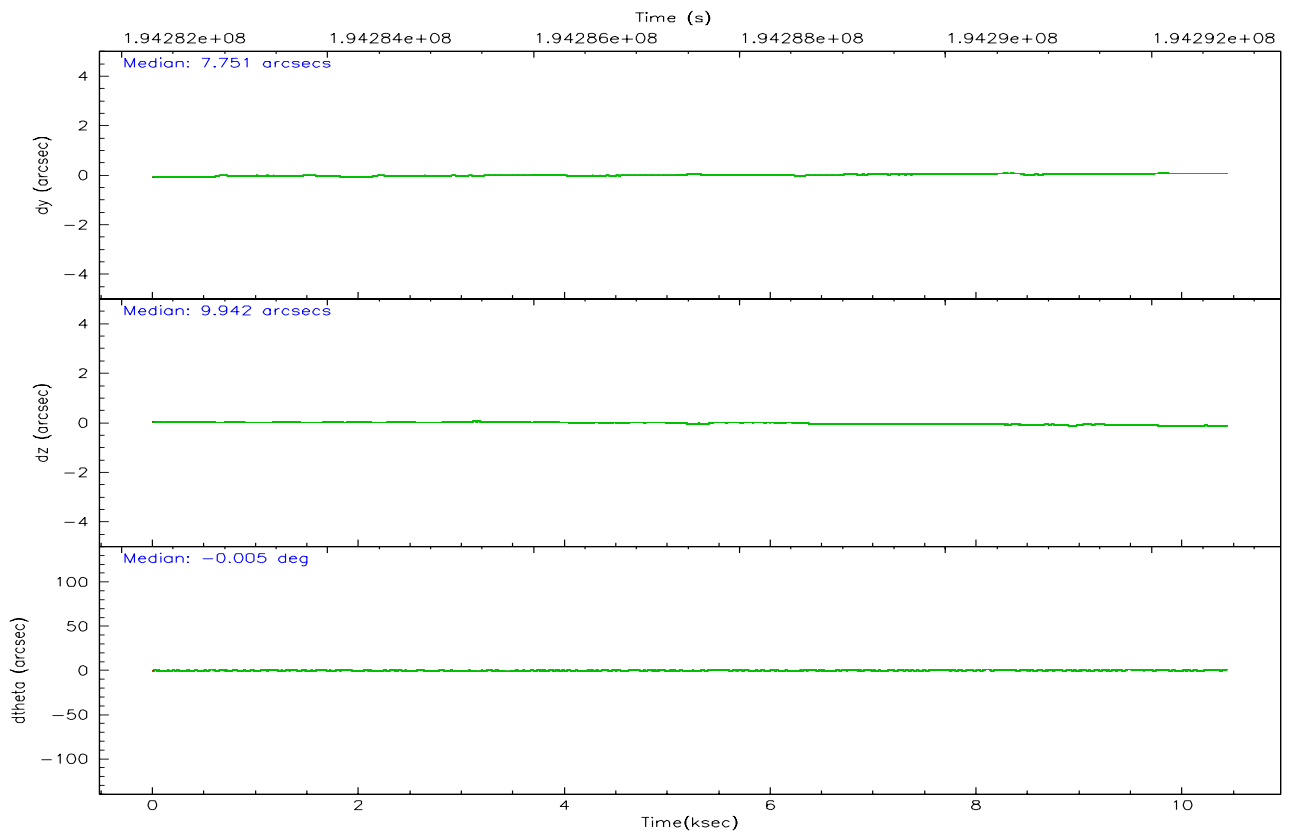
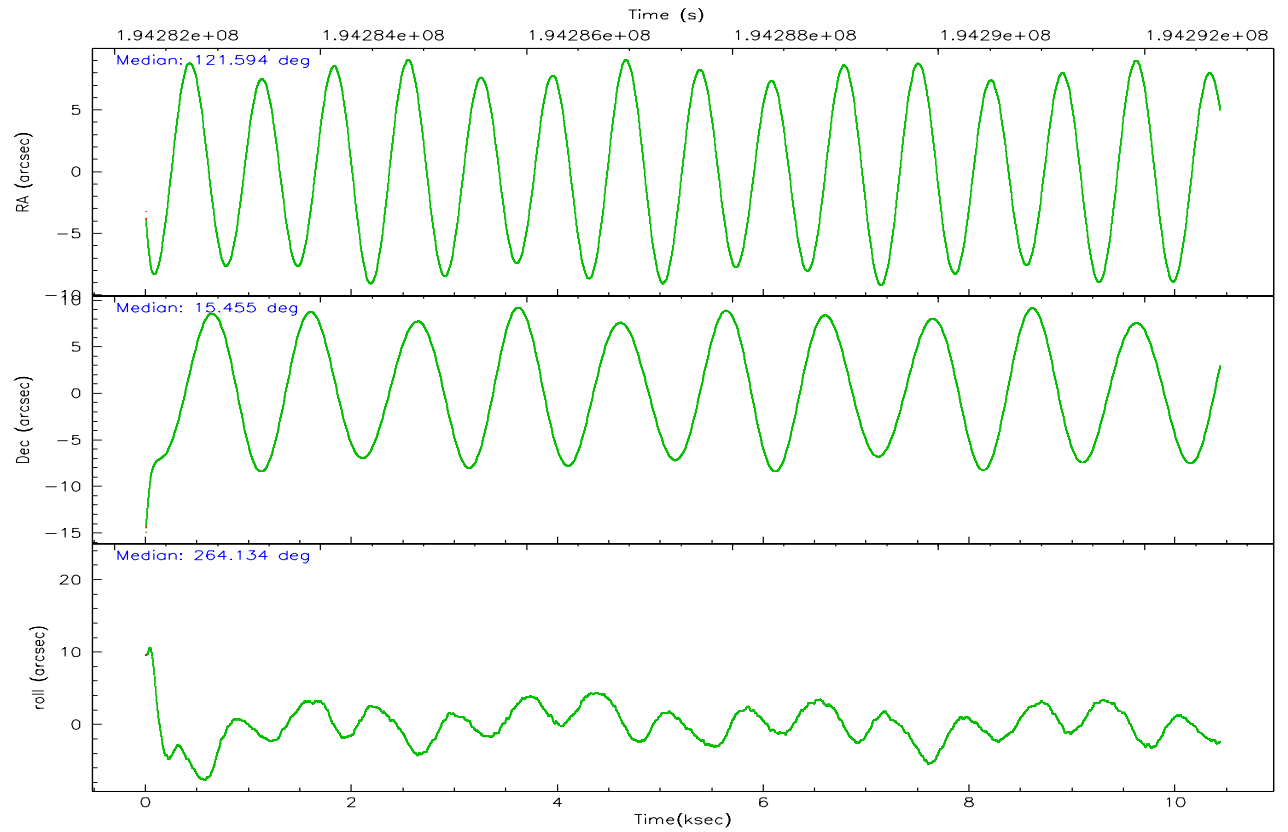
	ccd 2	ccd 3	ccd 5	ccd 6	ccd 7	ccd 8
grade 0 events	2206	2441	27258	2096	5161	5648
	8%	9%	28%	8%	8%	13%
grade 1 events	48	49	77	55	72	105
	0%	0%	0%	0%	0%	0%
grade 2 events	11586	12208	25656	11985	15015	15001
	46%	46%	26%	45%	24%	36%
grade 3 events	1622	2009	1246	1754	2229	2946
	6%	7%	1%	6%	3%	7%
grade 4 events	1656	1662	1181	1614	2271	2876
	6%	6%	1%	6%	3%	7%
grade 5 events	2665	2906	5980	3169	7442	4185
	10%	11%	6%	12%	12%	10%
grade 6 events	4890	5139	34717	5505	28706	9899
	19%	19%	36%	21%	47%	24%
grade 7 events	0	0	0	0	0	0
	0%	0%	0%	0%	0%	0%

2.2 Compared Parameters

Parameter	Planned	Actual	Parameter	Planned	Actual
Instrument	ACIS	ACIS	Obspar format version number	6	6
Detector	ACIS-235678	ACIS-235678	Obspar file type	PREDICTED	ACTUAL
Grating	NONE	NONE	Obspar update status	NONE	UPDATED
Data mode	CC33_GRADED	CC33_GRADED	On-chip summing requested	N	N
Observation mode	POINTING	POINTING	Subarray requested	NONE	NONE
Pointing RA	121.582602	121.5945322791287	Alternating exposures requested	N	N
Pointing Dec	15.479256	15.45451323022245	Primary exposure time	0.000000	0
Pointing Roll	263.987285	264.140743015625			
SIM focus pos (mm)	-0.684267	-0.6828225247311905			
SIM defocus (mm)	0	0.001444936568705701			
SIM translation stage pos (mm)	-190.132523	-190.1400660498719			
SIM translation stage offset (mm)	0	0.00754346686406393			
Observation start time	194282495.184000	194281499.34035			
Observation start date	2004-02-27T15:20:31	2004-02-27T15:04:59			
Observation end time	194292745.184000	194293586.65338			
Observation end date	2004-02-27T18:11:21	2004-02-27T18:26:26			
Read mode	CONTINUOUS	CONTINUOUS			

2.3 Aspect



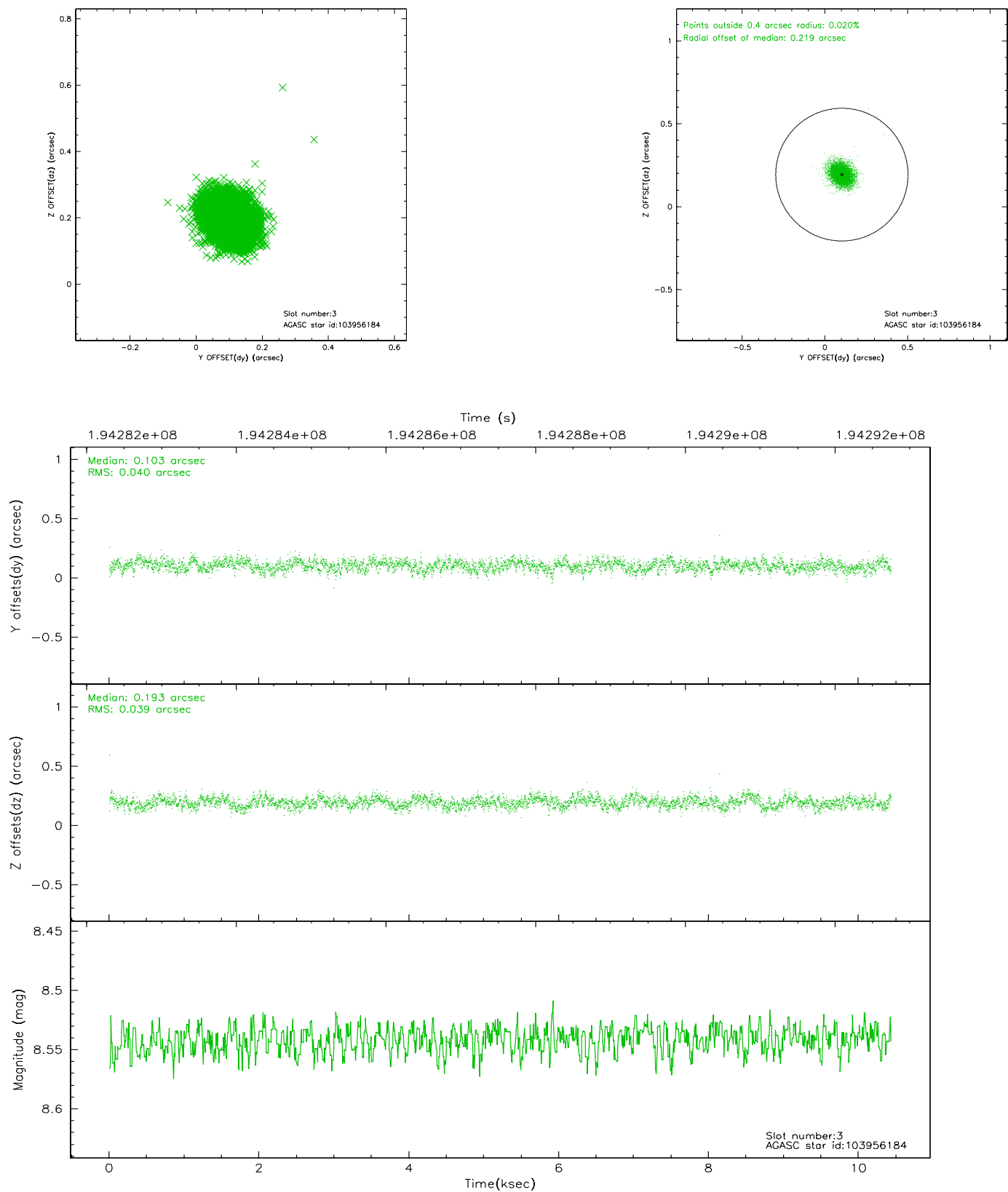


Slot Statistics

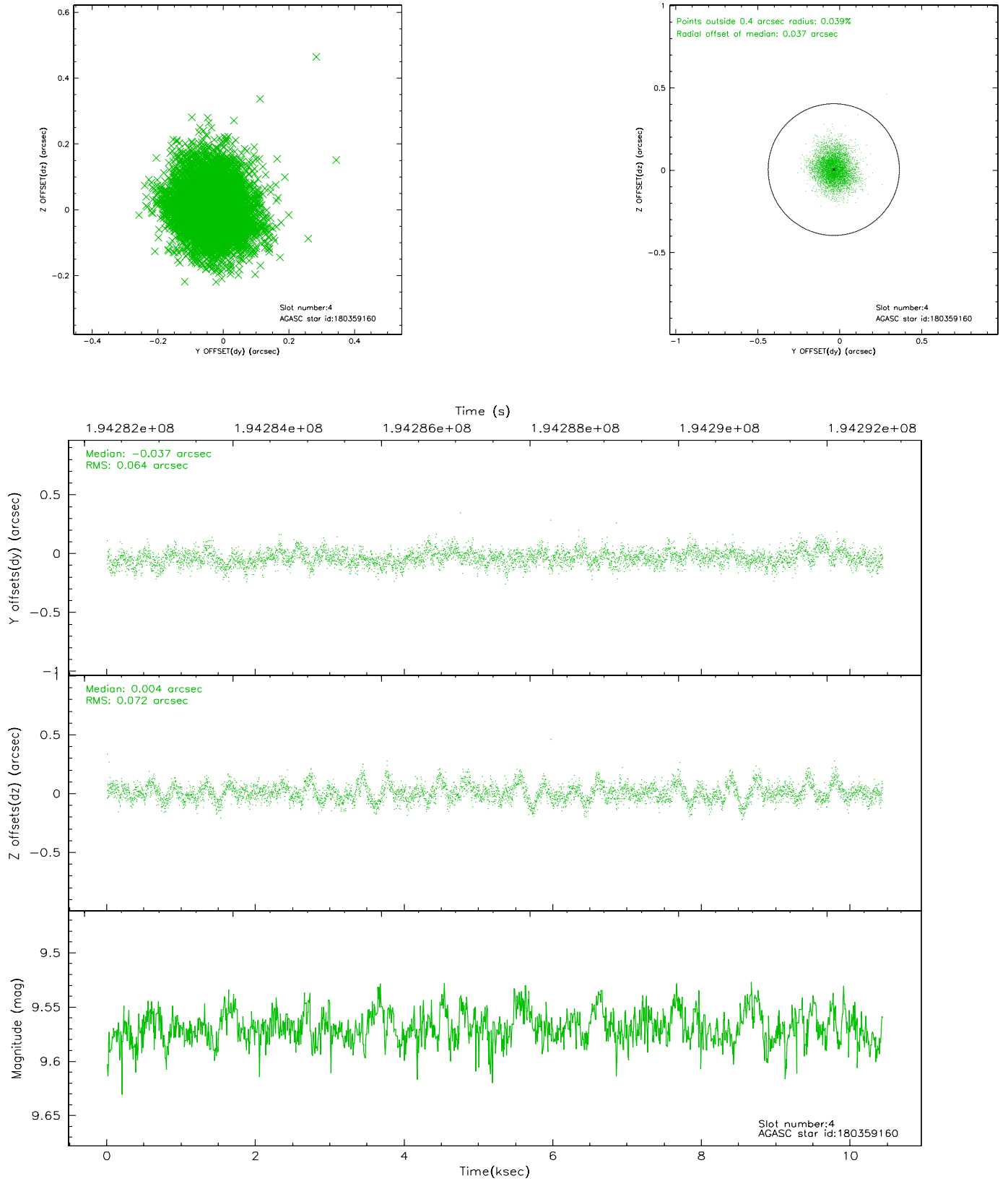
slot	status	id	mag	n_pts	med_dy	med_dz	dr1	dr2	ra	dec	mean_y	mean_z
0	FID	ACIS-S-2	7.10	2543	-0.030	0.001	0.007	0.011	0.000000	0.000000	-760.52	-1731.19
1	FID	ACIS-S-4	7.20	2542	0.048	0.014	0.005	0.010	0.000000	0.000000	2152.57	176.85
2	FID	ACIS-S-5	7.23	2542	-0.049	-0.006	0.007	0.012	0.000000	0.000000	-1812.77	170.99
3	GUIDE	103956184	8.54	5087	0.103	0.193	0.059	0.095	122.093586	14.853591	2051.75	2004.53
4	GUIDE	180359160	9.57	5083	-0.037	0.004	0.102	0.167	121.837257	16.020694	-2030.92	672.39
5	GUIDE	180367416	9.11	5085	-0.087	-0.062	0.086	0.141	120.920648	15.525818	70.14	-2301.20
6	GUIDE	180370112	8.38	5087	0.041	-0.150	0.060	0.096	121.144488	15.364256	570.88	-1470.31
7	GUIDE	180372496	7.91	5084	-0.020	0.013	0.059	0.097	121.745221	15.155380	1100.32	684.11

2.4 Star Slots

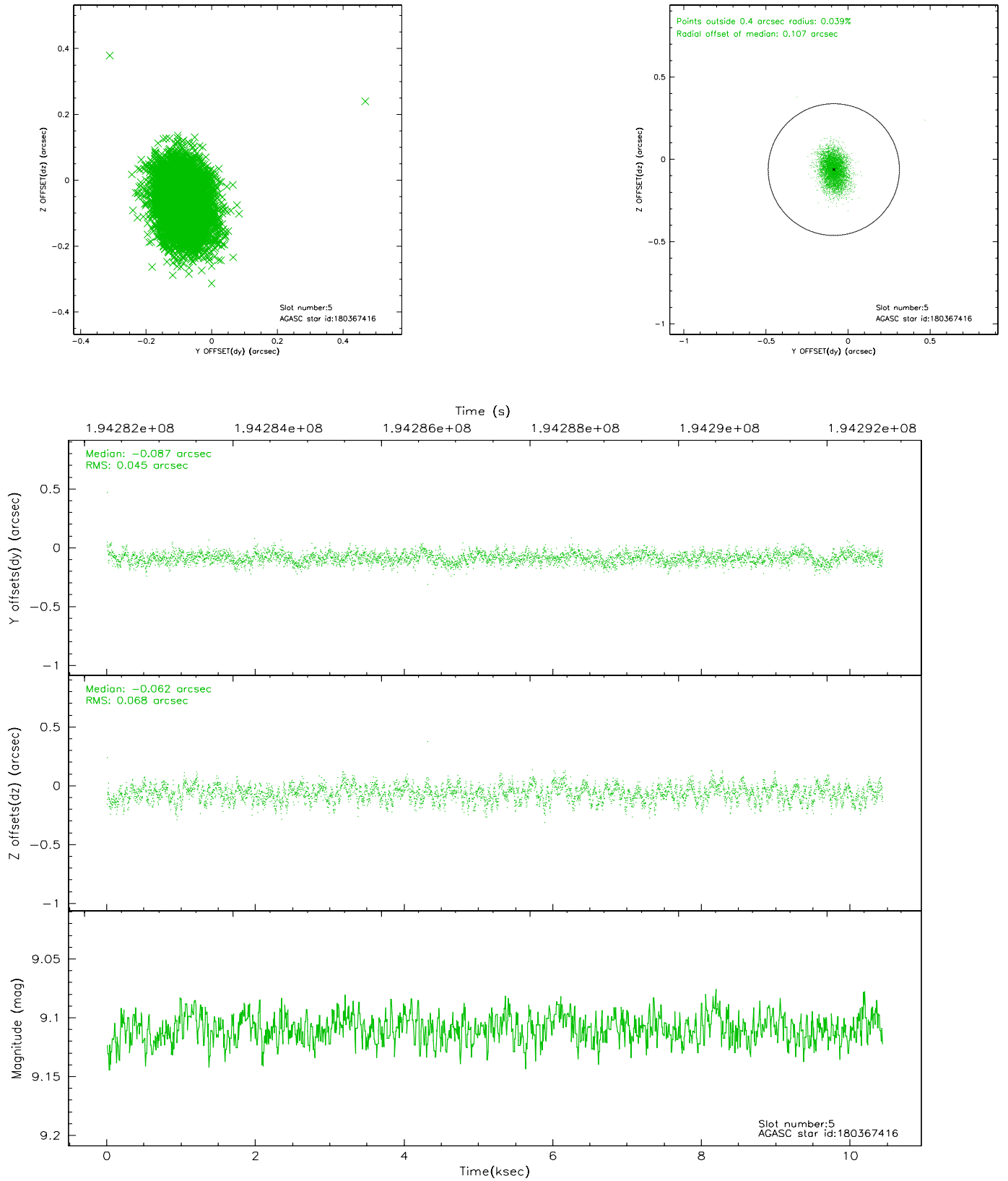
2.4.1 Slot 3



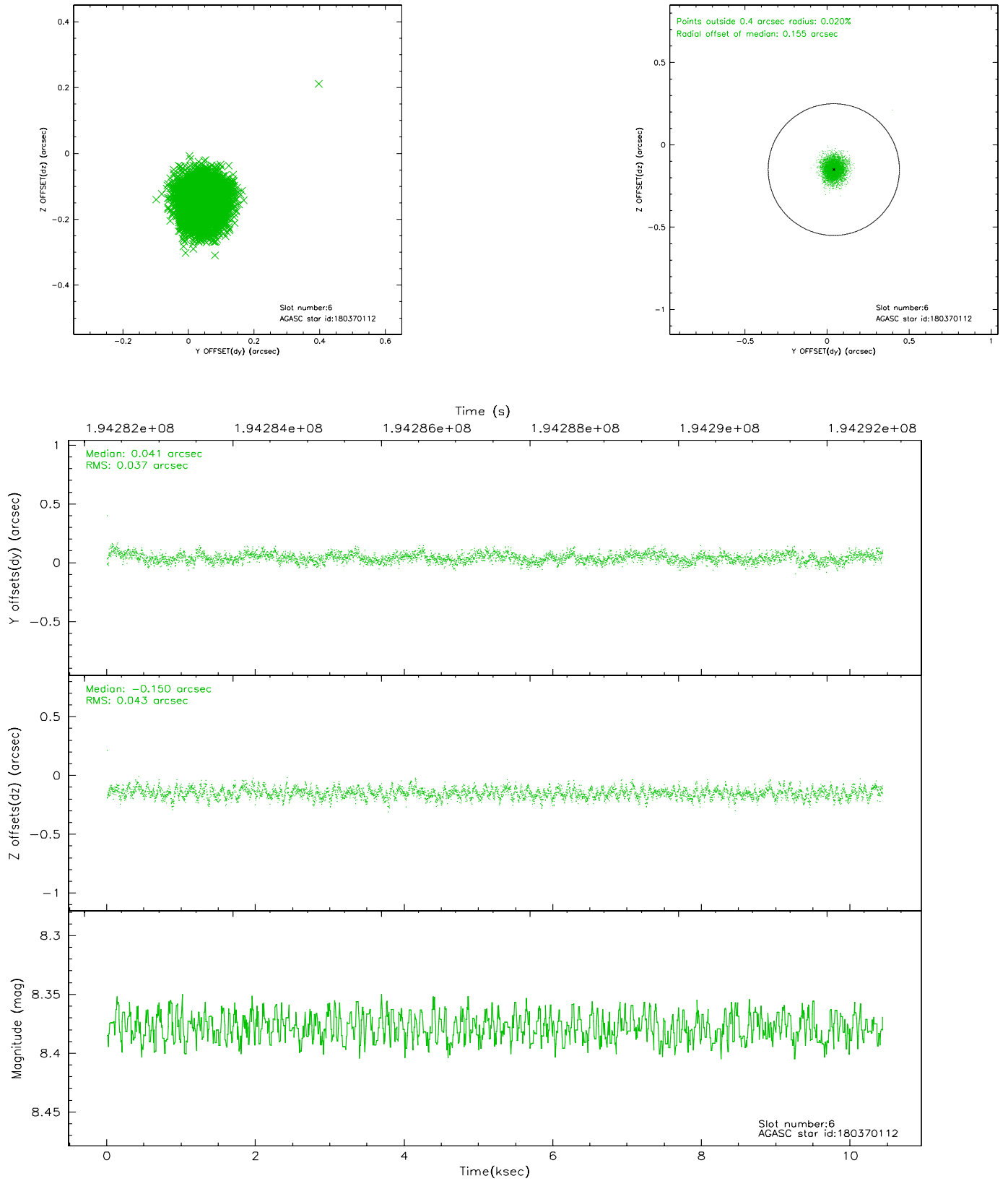
2.4.2 Slot 4



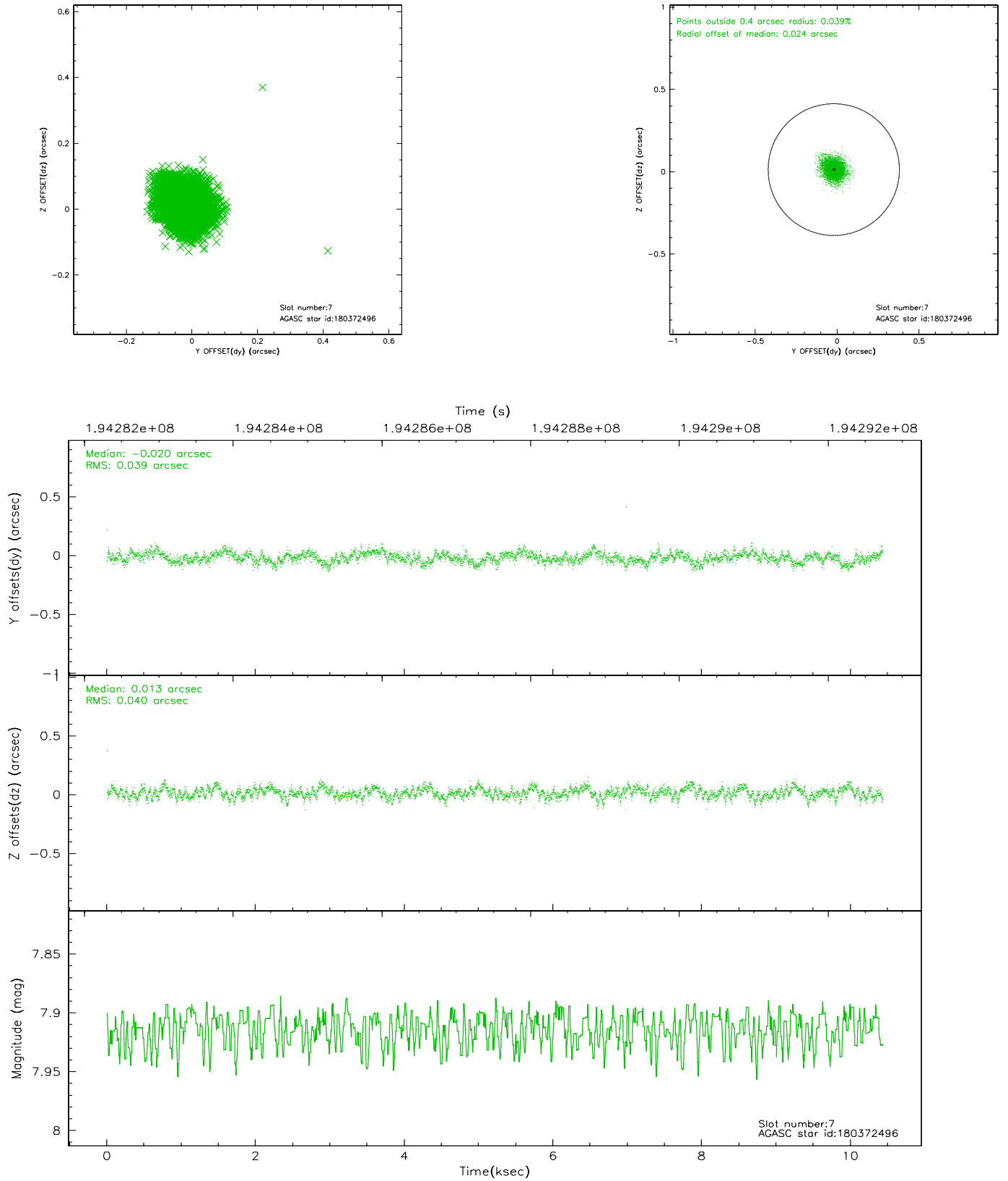
2.4.3 Slot 5



2.4.4 Slot 6

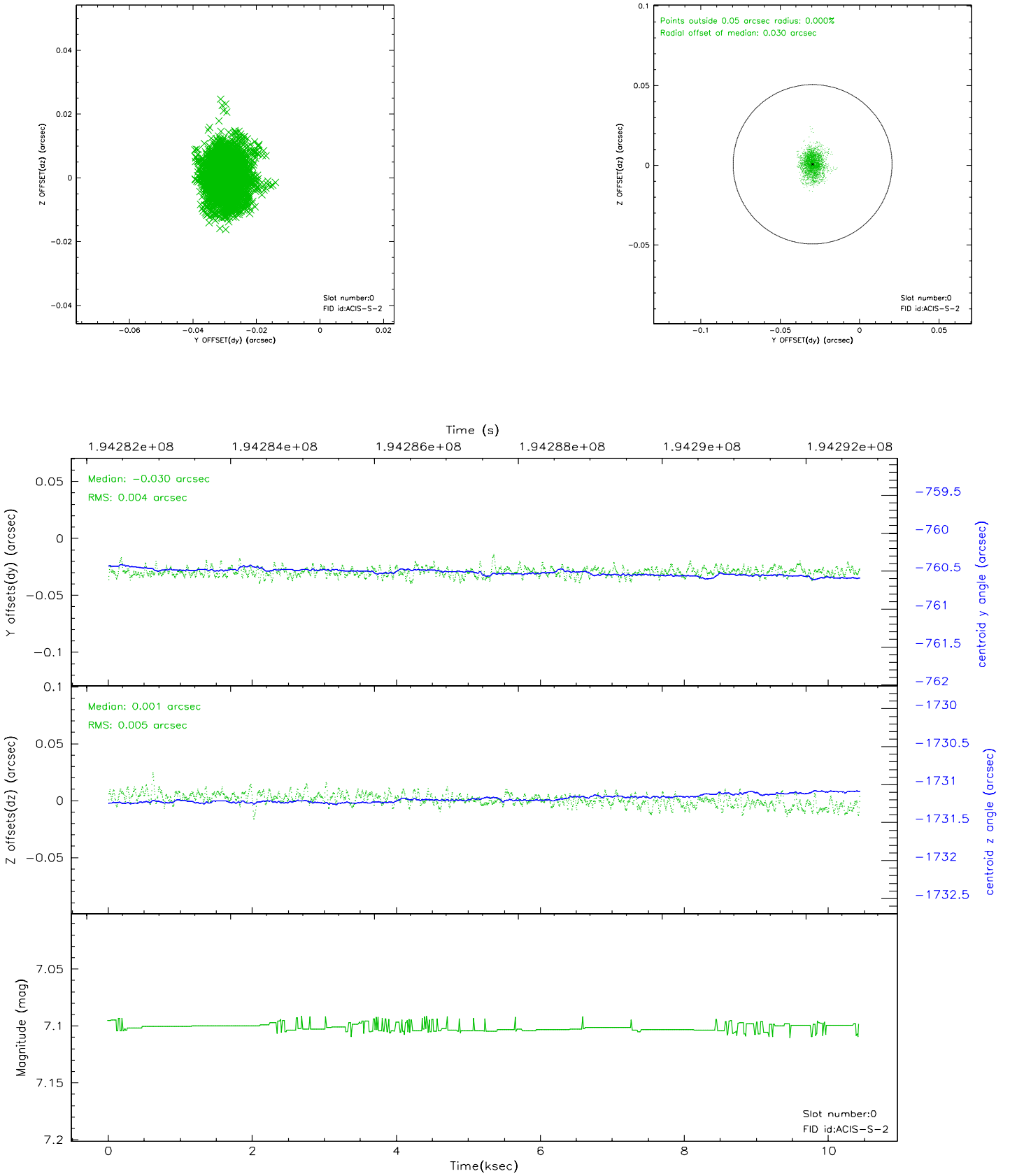


2.4.5 Slot 7

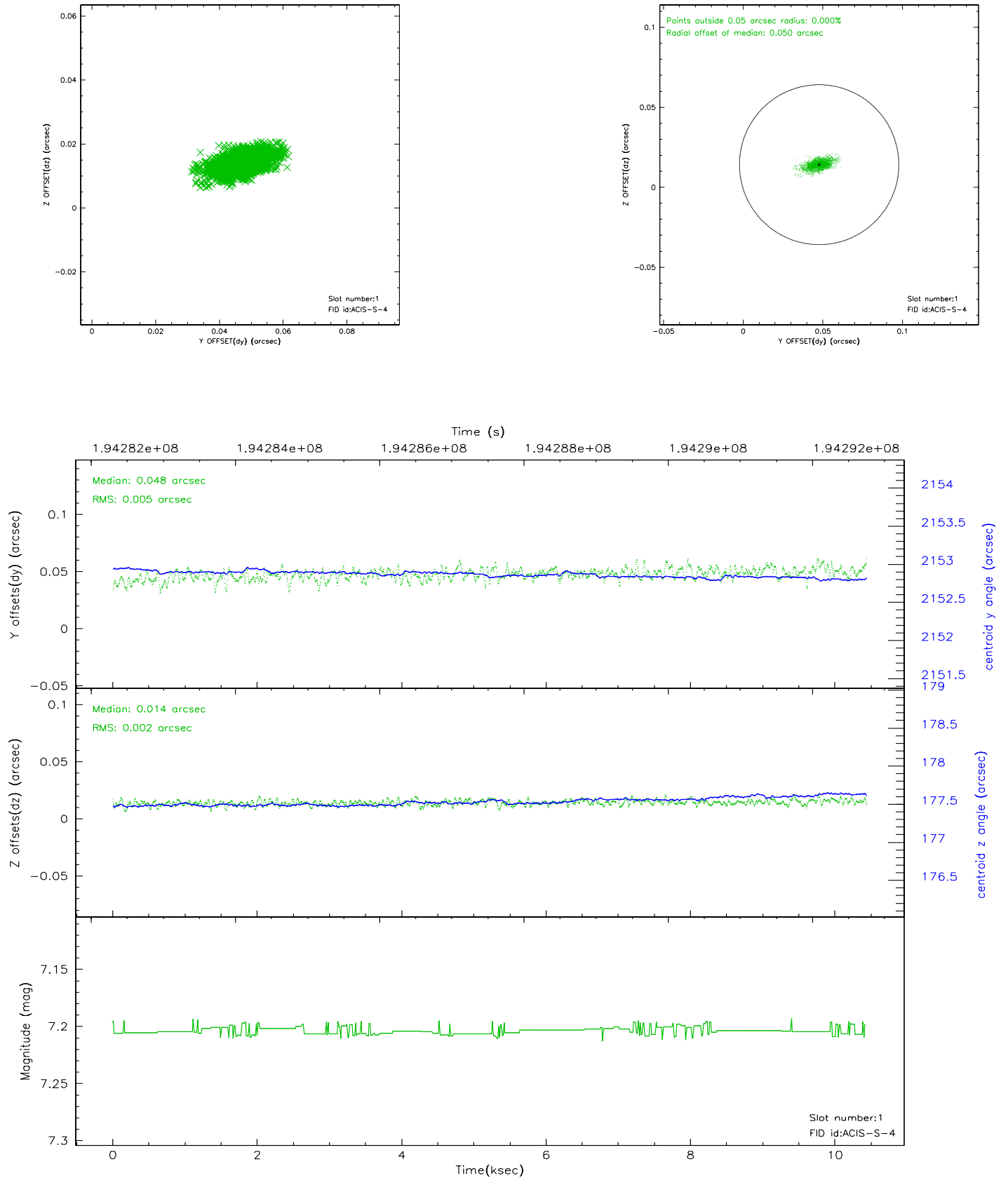


2.5 FID Slots

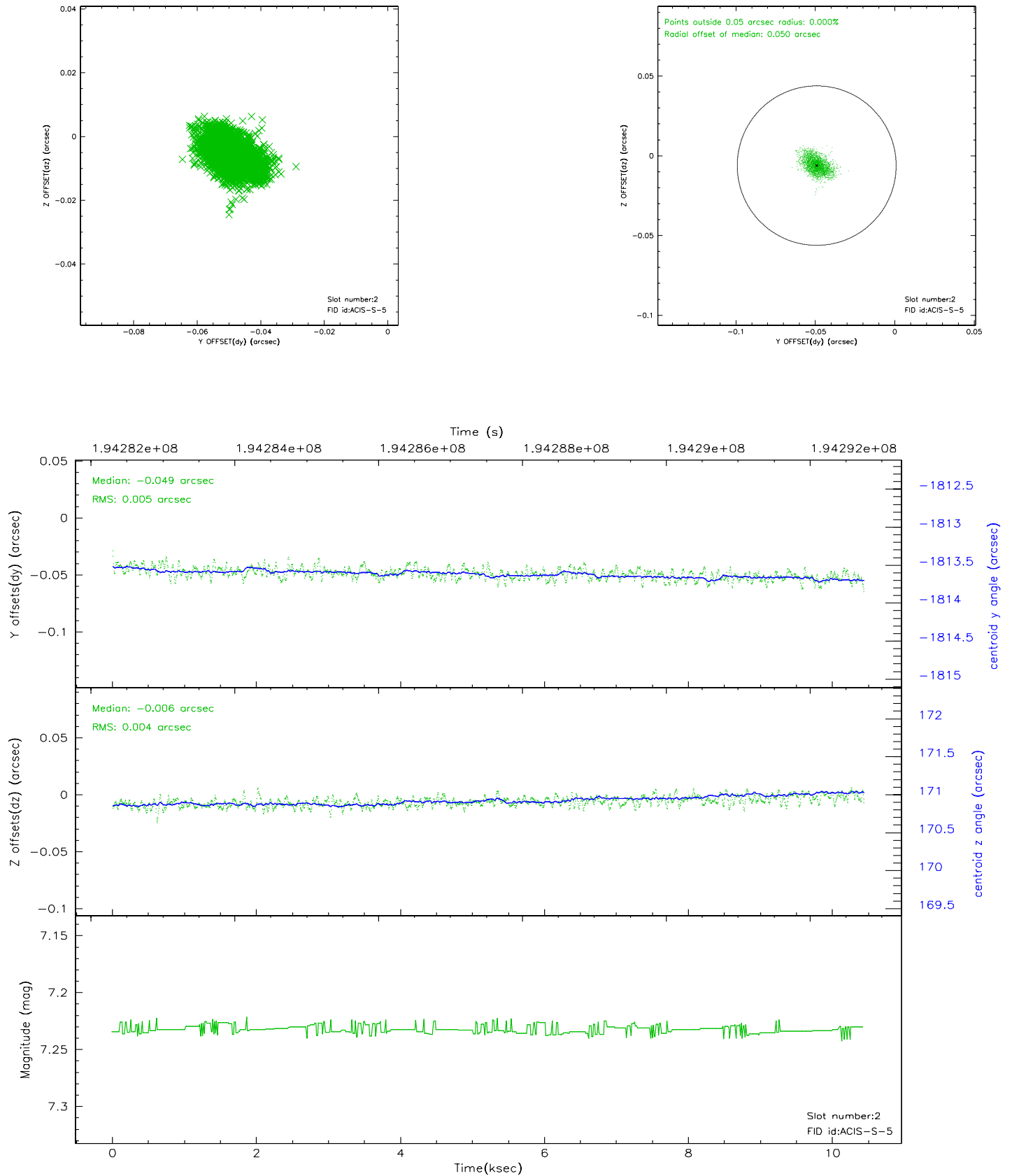
2.5.1 Slot 0



2.5.2 Slot 1



2.5.3 Slot 2



A Summary

A.1 Status

V&V Scientist	Beth Sundheim
V&V Date (YYYY-MM-DD)	2008.04.14
V&V Edition	1
V&V Disposition and Status	OK
V&V Charge Time	10.43

A.2 Comments