

V&V Reference Report

L2 ASCDS Version : 8.5

Observation 6171 - L2 Version 3
Chandra X-Ray Center

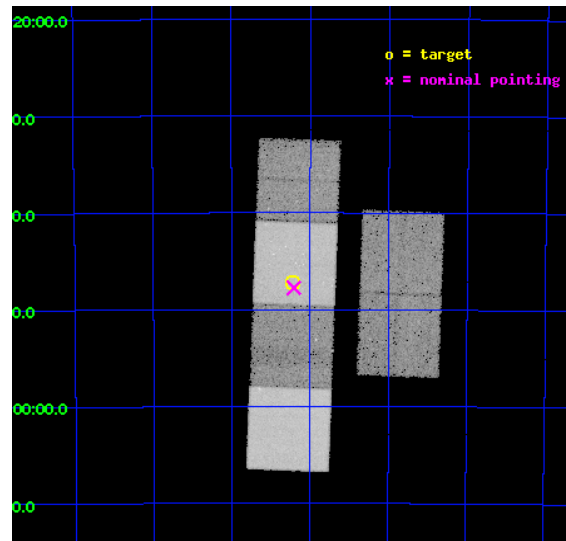
L2 Processing Date : Dec 12 2012

Contents

1	Front	2
2	OBI	3
2.1	OBI	3
2.1.1	Images	3
2.1.2	Bias	3
2.1.3	Parameters	4
2.1.4	Events	4
2.2	Compared Parameters	5
2.3	Aspect	6
2.4	Star Slots	9
2.4.1	Slot 3	9
2.4.2	Slot 4	10
2.4.3	Slot 5	11
2.4.4	Slot 6	12
2.4.5	Slot 7	13
2.5	FID Slots	14
2.5.1	Slot 0	14
2.5.2	Slot 1	15
2.5.3	Slot 2	16
A	Summary	17
A.1	Status	17
A.2	Comments	17

1 Front

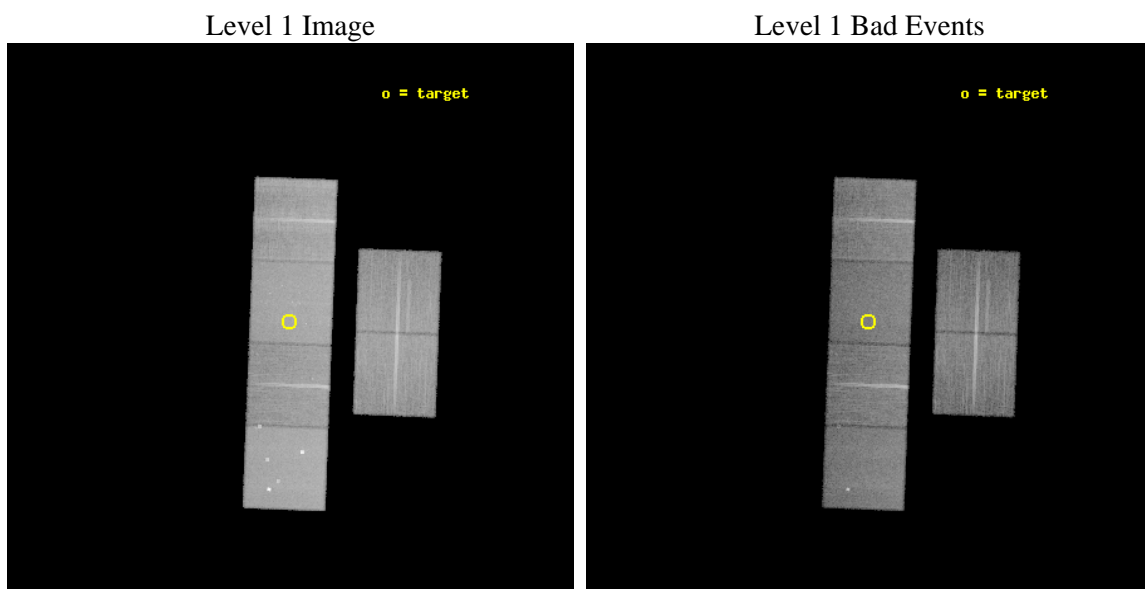
seq_num	200254	Sequence number
obs_id	6171	Observation id
title	A DEEP LOOK AT THE NEAREST BROWN DWARF: EPSILON INDI B, A T2.5 DWARF	
observer	Prof. Marc Audard	Principal investigator
object	EPSILON INDI B	Source name
dtcycle	0	
cycle	P	events from which exps? Prim/Second/Both
ra_targ	331.054167	Observer's specified target RA [deg]
dec_targ	-56.78625	Observer's specified target Dec [deg]
ra_nom	331.05171235266	Nominal RA [deg]
dec_nom	-56.795855876027	Nominal Dec [deg]
roll_nom	272.15456319246	Nominal Roll [deg]
revision	3	Processing version of data
ontime	23647.999911904	Sum of GTIs [s]
livetime	23348.554697904	Livetime [s]
ontime2	23644.75904116	Sum of GTIs [s]
ontime3	23647.999911904	Sum of GTIs [s]
ontime5	23647.999911904	Sum of GTIs [s]
ontime6	23647.999911904	Sum of GTIs [s]
ontime7	23647.999911904	Sum of GTIs [s]
ontime8	23644.759071141	Sum of GTIs [s]
l2events	299586	Number of level 2 events



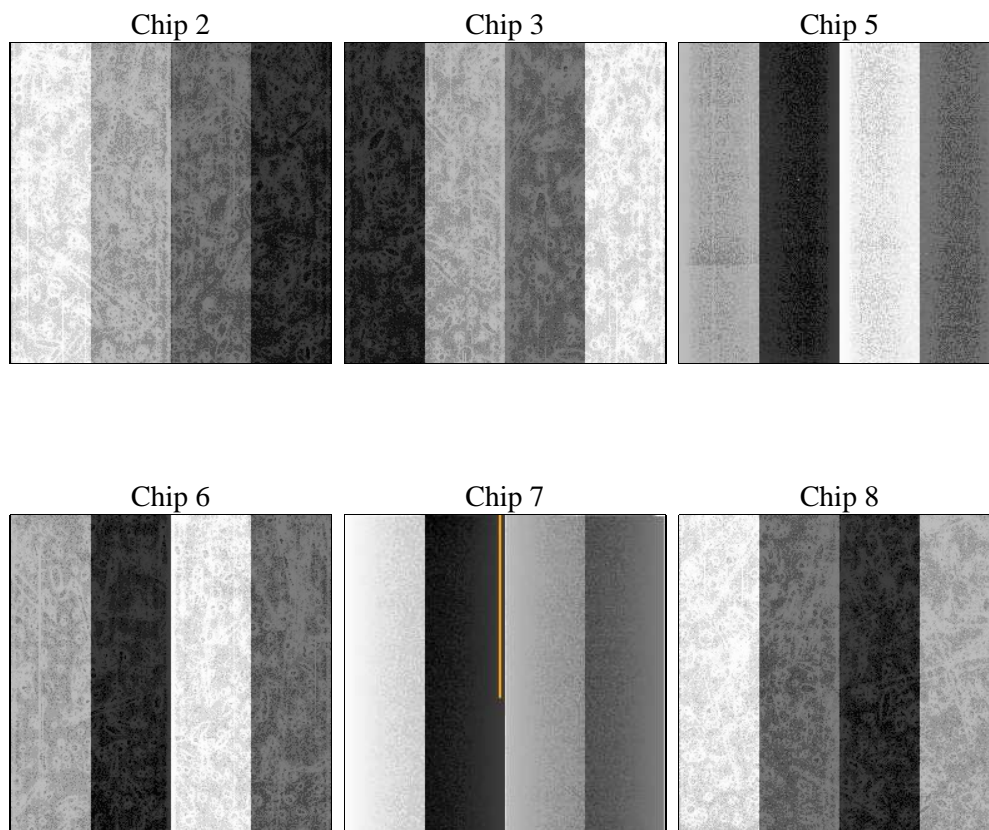
2 OBI

2.1 OBI

2.1.1 Images



2.1.2 Bias



2.1.3 Parameters

obi_num	0	Obi number	sched_exp_time	23500.000000	[s] Scheduled observation exposure time
ascdsver	8.5	Processing system revision	ontime	23647.999911904	Sum of GTIs [s]
caldsver	4.5.4	 	ontime2	23644.75904116	Sum of GTIs [s]
date	2012-12-12T14:25:46	Date and time of file creation	ontime3	23647.999911904	Sum of GTIs [s]
revision	3	Processing version of data	ontime5	23647.999911904	Sum of GTIs [s]
			ontime6	23647.999911904	Sum of GTIs [s]
			ontime7	23647.999911904	Sum of GTIs [s]
			ontime8	23644.759071141	Sum of GTIs [s]
			l1events	1317585	Number of level 1 events

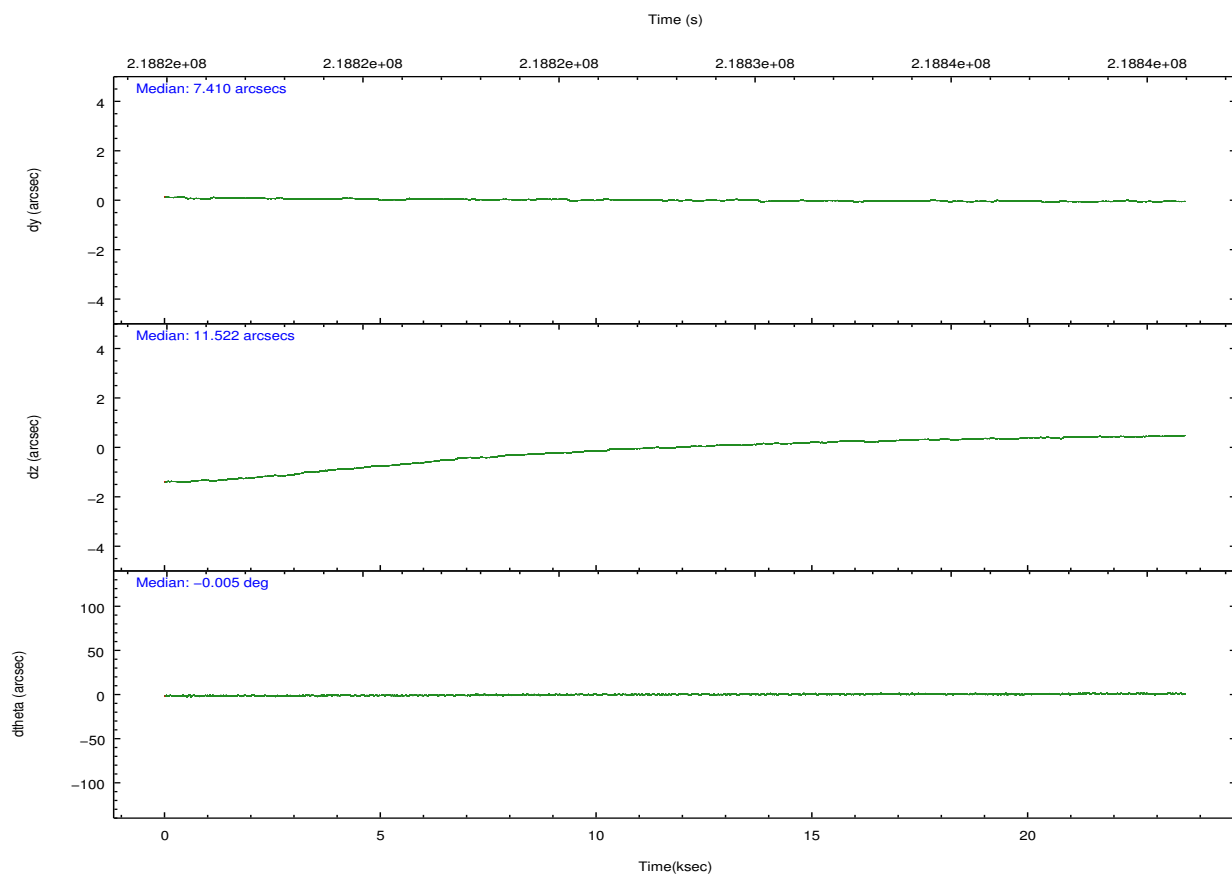
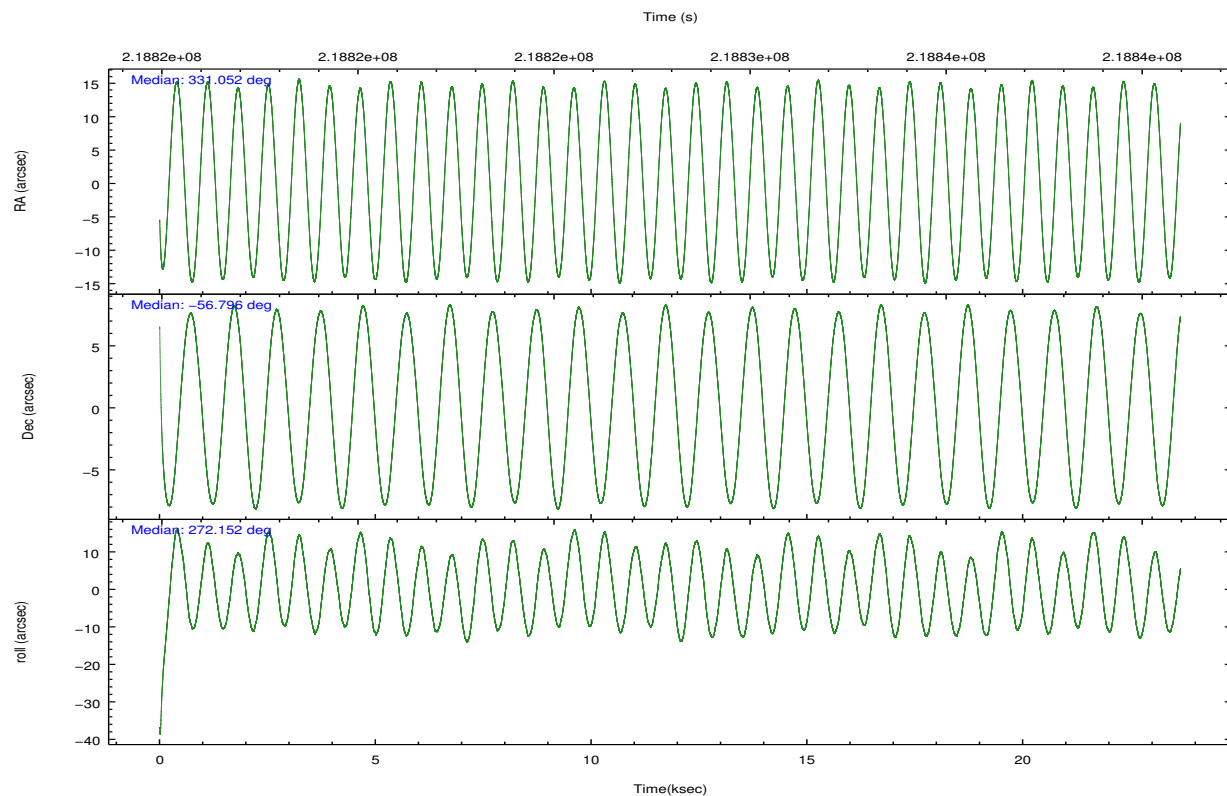
2.1.4 Events

	ccd 2	ccd 3	ccd 5	ccd 6	ccd 7	ccd 8		ccd 2	ccd 3	ccd 5	ccd 6	ccd 7	ccd 8
level 1 events	189593	174498	282825	183063	246750	240856	grade 0 events	10551	9601	18922	9314	9832	19631
rejected events	166369	152602	150619	159849	143960	184471		5%	5%	6%	5%	3%	8%
rejected %	87%	87%	53%	87%	58%	76%	grade 1 events	133	123	1705	105	259	183
								0%	0%	0%	0%	0%	0%
							grade 2 events	5017	4602	38773	5186	20743	11738
								2%	2%	13%	2%	8%	4%
							grade 3 events	2040	2034	4953	2117	9286	6398
								1%	1%	1%	1%	3%	2%
							grade 4 events	1997	2003	4821	2112	9026	5846
								1%	1%	1%	1%	3%	2%
							grade 5 events	7100	7845	19759	8174	23288	10872
								3%	4%	6%	4%	9%	4%
							grade 6 events	3798	3892	65993	4700	54836	13392
								2%	2%	23%	2%	22%	5%
							grade 7 events	158957	144398	127899	151355	119480	172796
								83%	82%	45%	82%	48%	71%

2.2 Compared Parameters

Parameter	Planned	Actual	Parameter	Planned	Actual
Instrument	ACIS	ACIS	Obspar format version number	7	7
Detector	ACIS-235678	ACIS-235678	Obspar file type	PREDICTED	ACTUAL
Grating	NONE	NONE	Obspar update status	NONE	UPDATED
Data mode	VFAINT	VFAINT	Number of optional ACIS chips dropped	0	0
Observation mode	POINTING	POINTING	On-chip summing requested	N	N
[deg] Pointing RA	331.024726	331.0517123526604	Subarray requested	NONE	NONE
[deg] Pointing Dec	-56.772968	-56.79585587602734	Alternating exposures requested	N	N
[deg] Pointing Roll	271.975376	272.1545631924561	[s] Primary exposure time	0.000000	3.2
[mm] SIM focus pos	-0.684267	-0.6828225247311905			
[mm] SIM defocus	0	0.001444936568705701			
[mm] SIM translation stage pos	-190.132523	-190.1400660498719			
[mm] SIM translation stage offset	0	0.00754346686406393			
[s] Observation start time (MET)	218816286.184000	218815119.89201			
Observation start date	2004-12-07T14:17:02	2004-12-07T13:58:39			
[s] Observation end time (MET)	218839786.184000	218841093.39318			
Observation end date	2004-12-07T20:48:42	2004-12-07T21:11:33			
Read mode	TIMED	TIMED			

2.3 Aspect

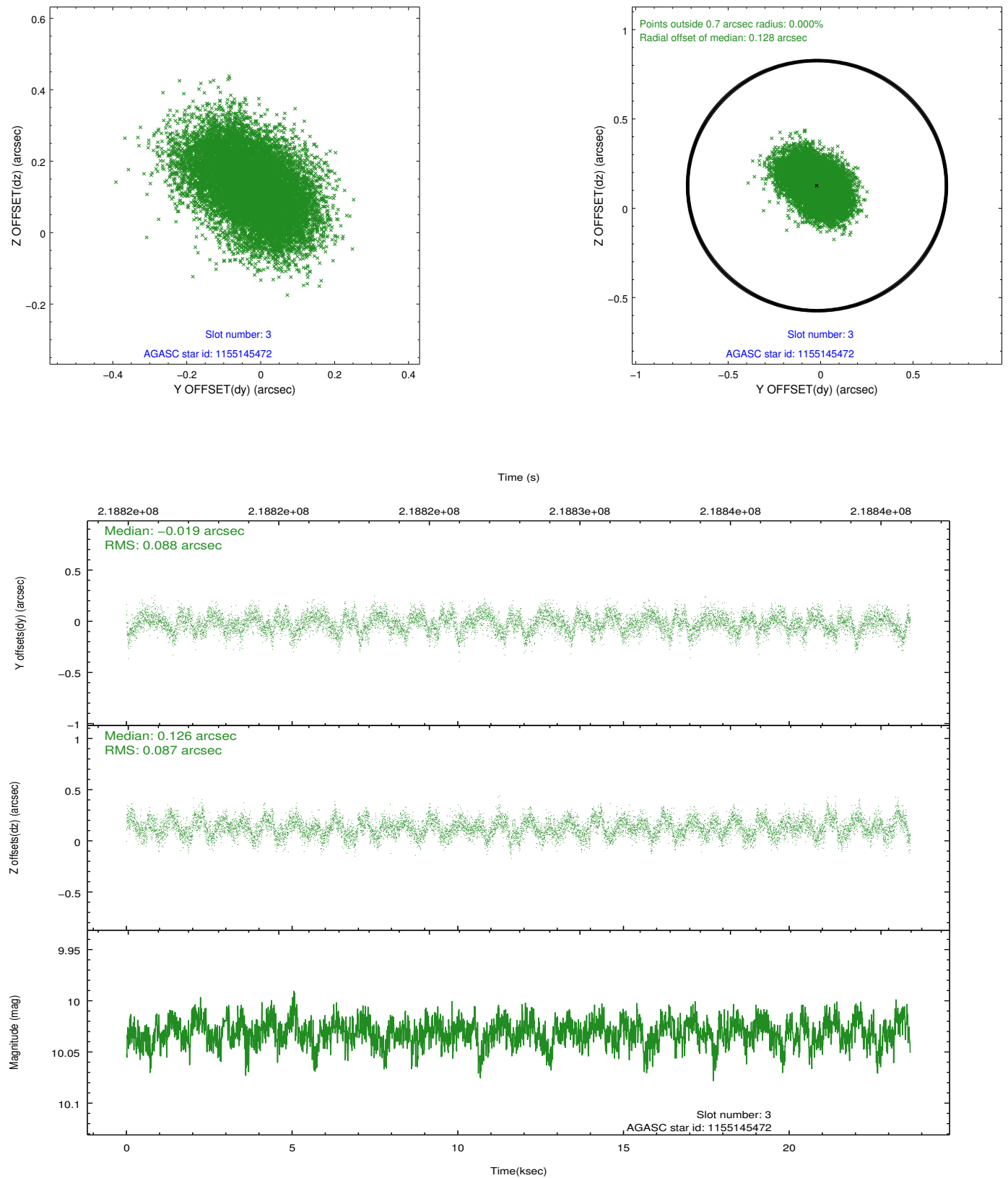


Slot Statistics

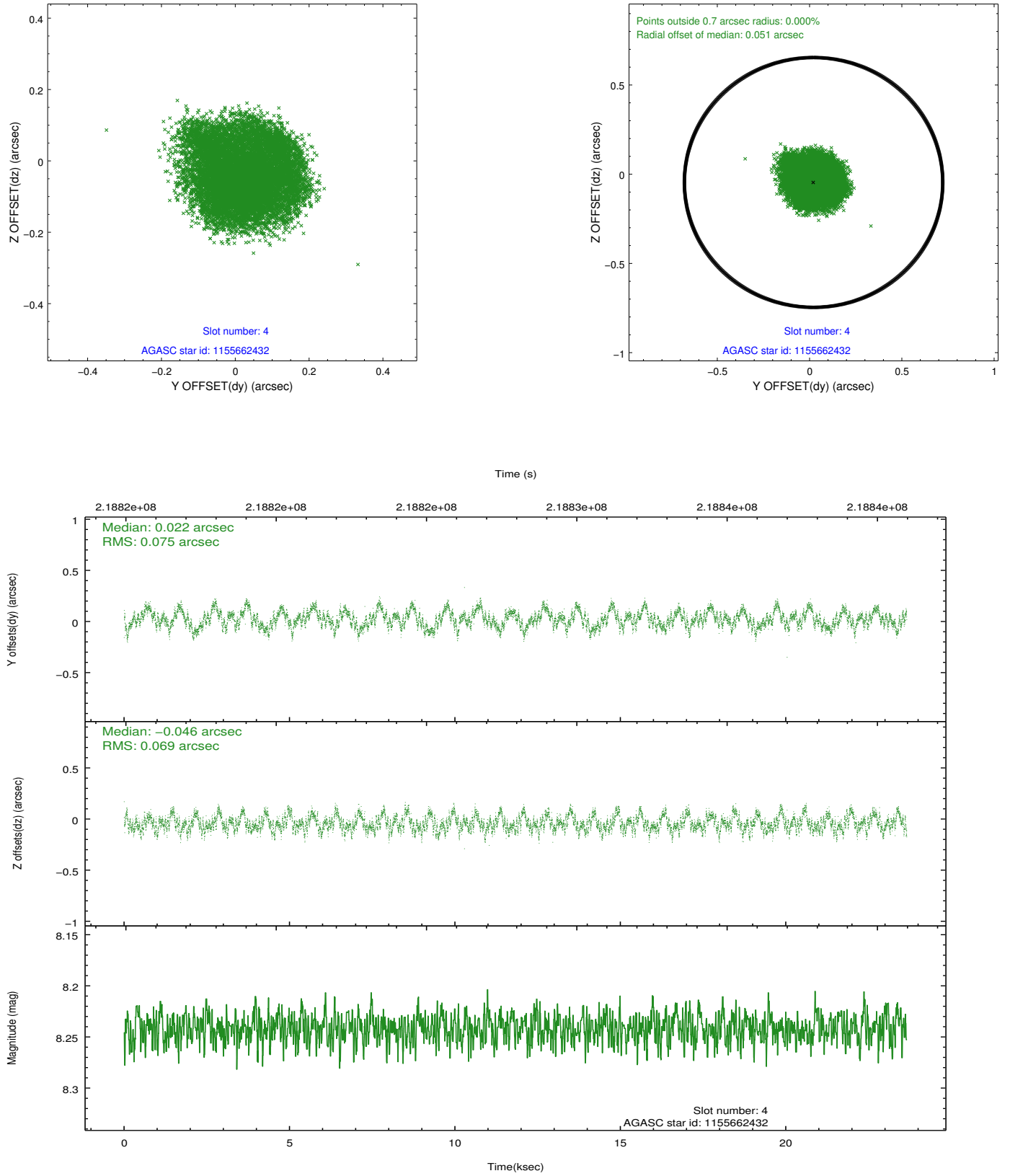
slot	status	id	mag	n_pts	med_dy	med_dz	dr1	dr2	ra	dec	mean_y	mean_z
0	FID	ACIS-S-2	7.10	5770	-0.048	-0.035	0.014	0.026	0.000000	0.000000	-760.21	-1732.66
1	FID	ACIS-S-4	7.20	5769	0.063	0.012	0.010	0.020	0.000000	0.000000	2153.10	175.77
2	FID	ACIS-S-6	7.34	5770	-0.041	0.029	0.009	0.016	0.000000	0.000000	401.93	813.31
3	GUIDE	1155145472	10.03	11525	-0.019	0.126	0.133	0.211	330.914509	-56.156792	-2224.28	-144.10
4	GUIDE	1155662432	8.24	11535	0.022	-0.046	0.114	0.171	331.914502	-56.851094	352.81	1740.52
5	GUIDE	1155662832	9.68	11533	0.184	-0.038	0.214	0.313	330.711099	-57.263815	1746.72	-670.70
6	GUIDE	1155668552	8.00	11539	-0.078	-0.168	0.071	0.115	331.144851	-56.299715	-1693.94	297.97
7	GUIDE	1155145264	9.72	11517	-0.106	0.116	0.137	0.224	332.166474	-56.106650	-2299.43	2373.44

2.4 Star Slots

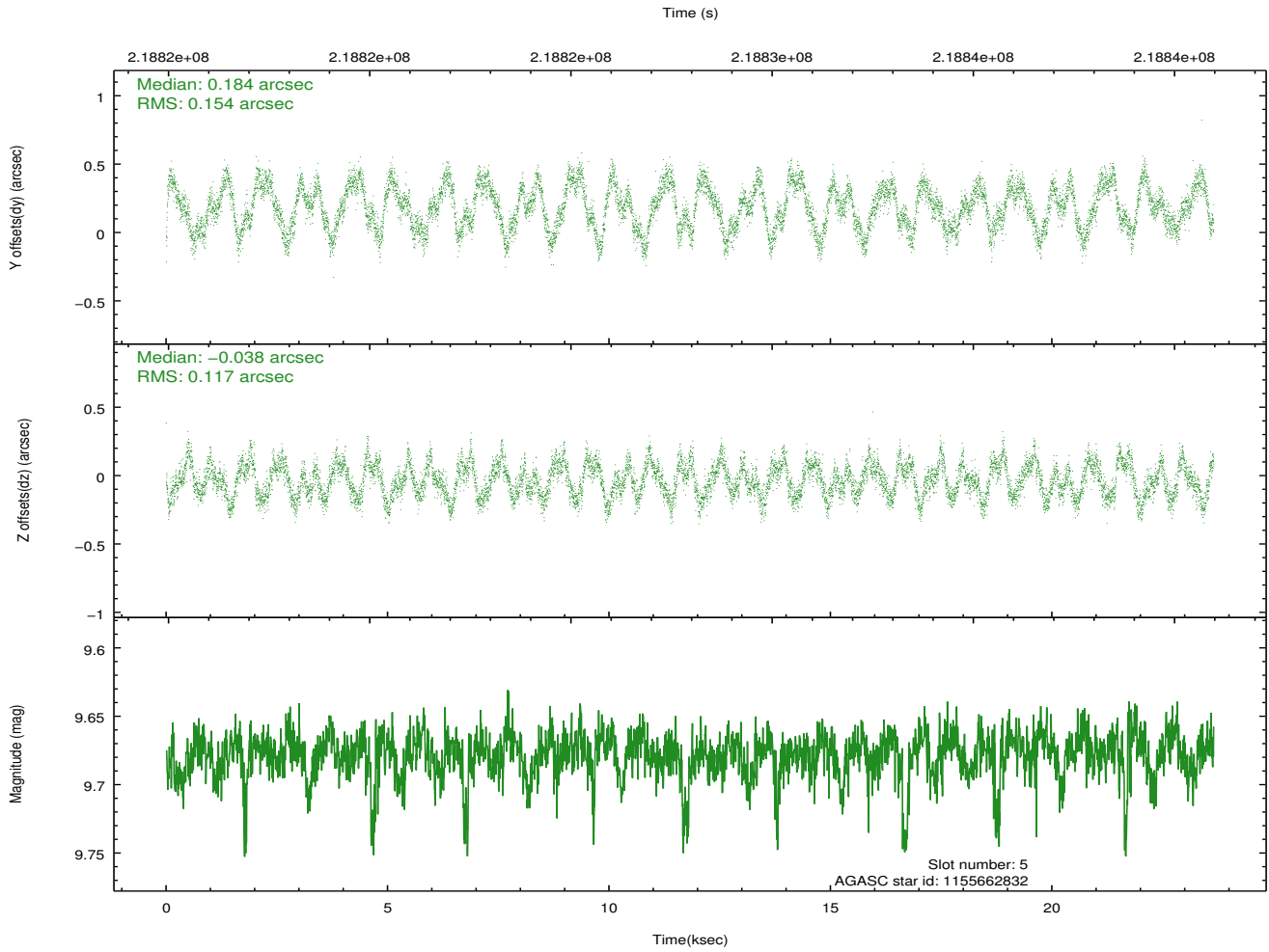
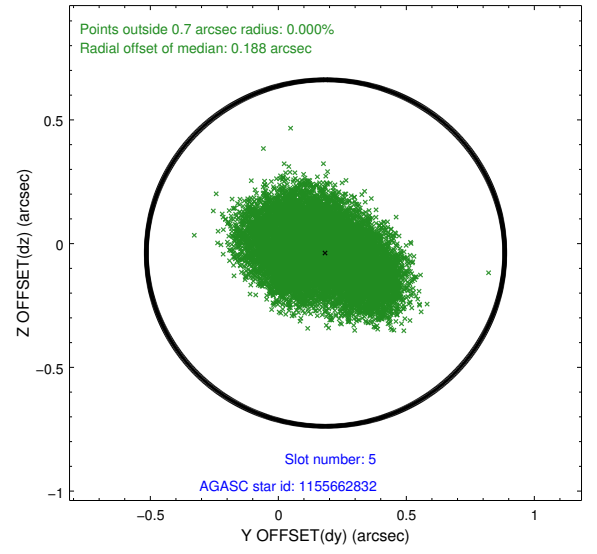
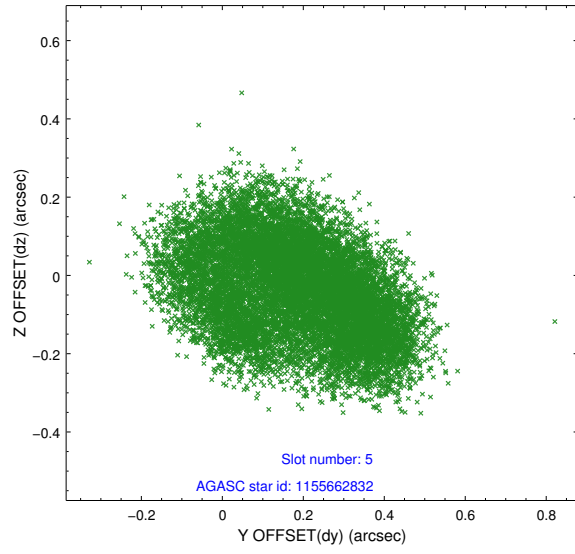
2.4.1 Slot 3



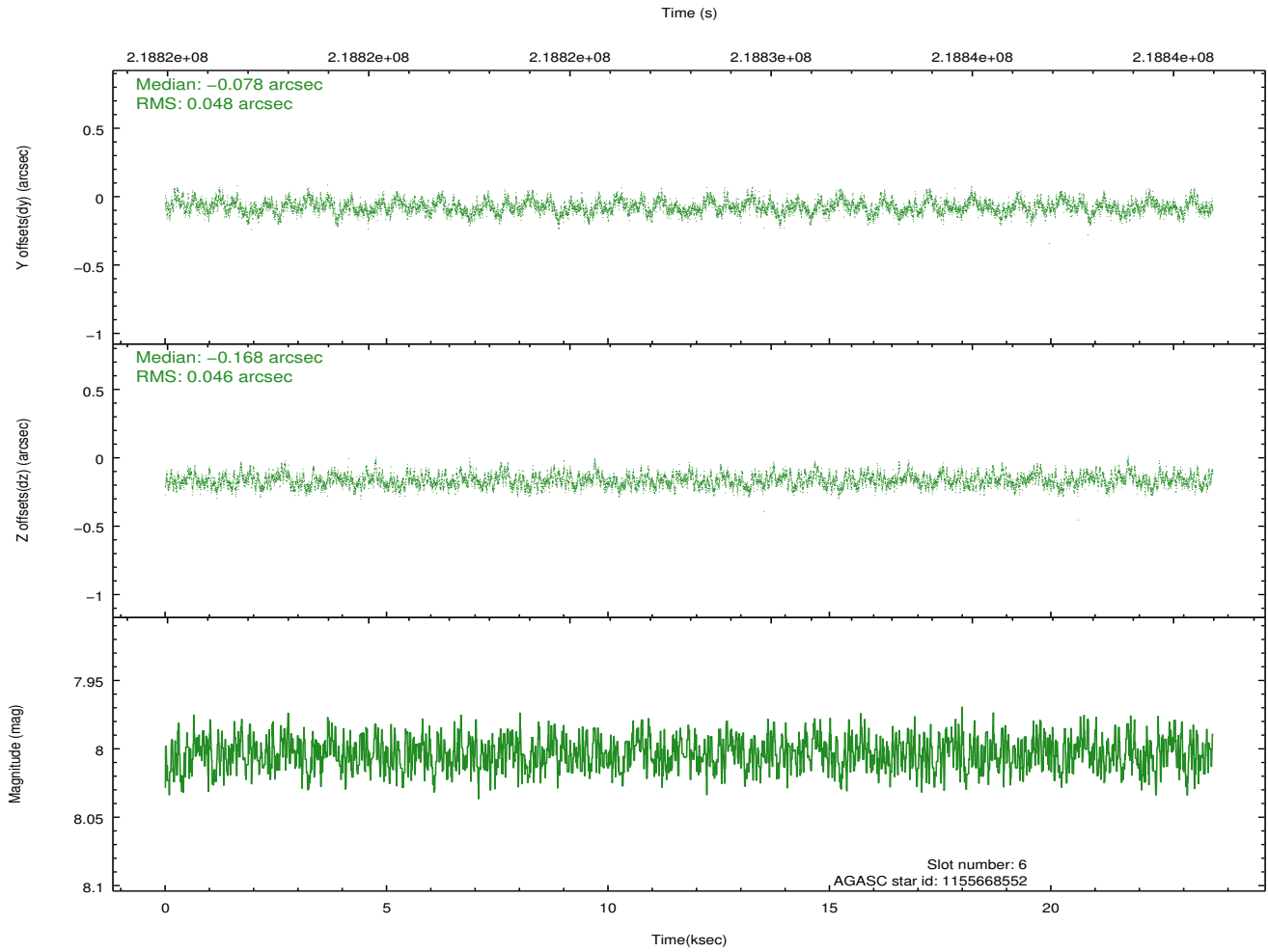
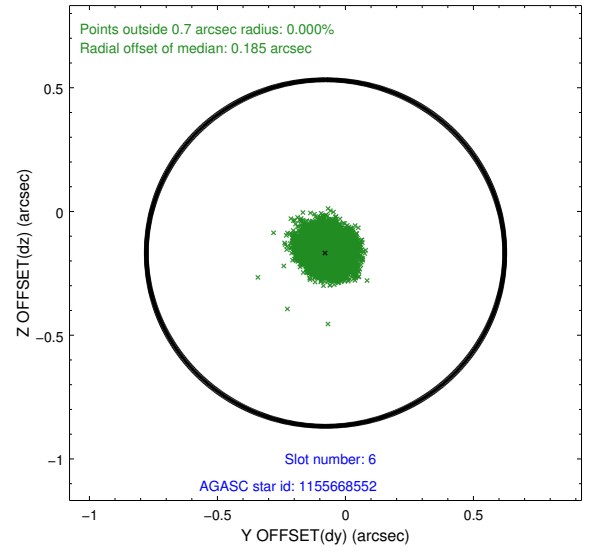
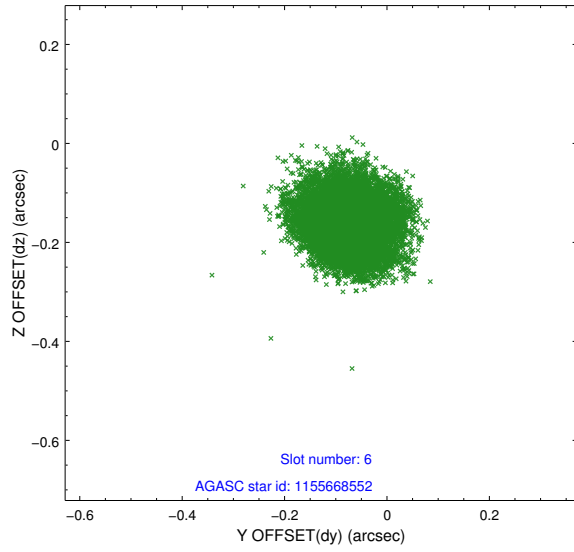
2.4.2 Slot 4



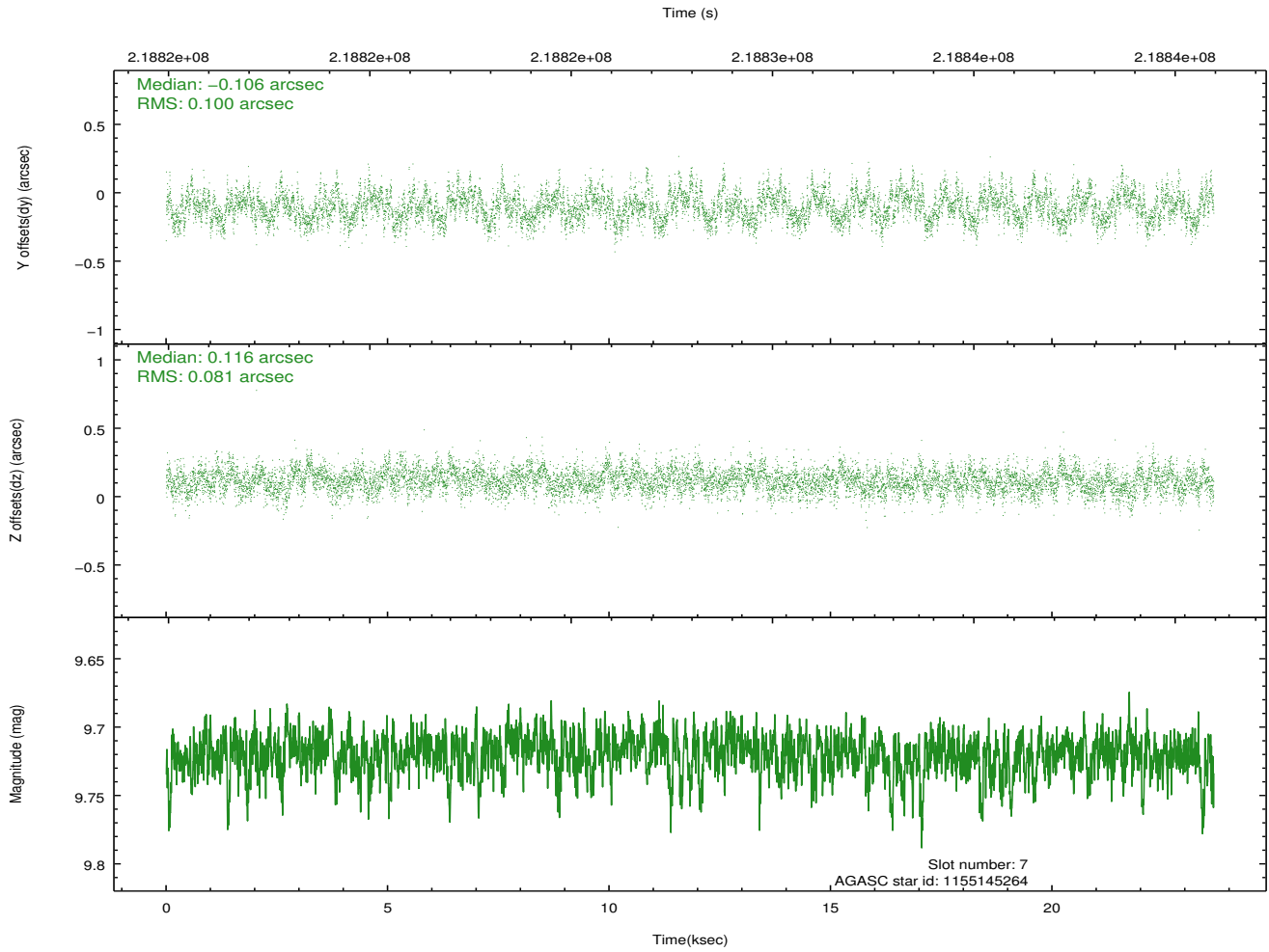
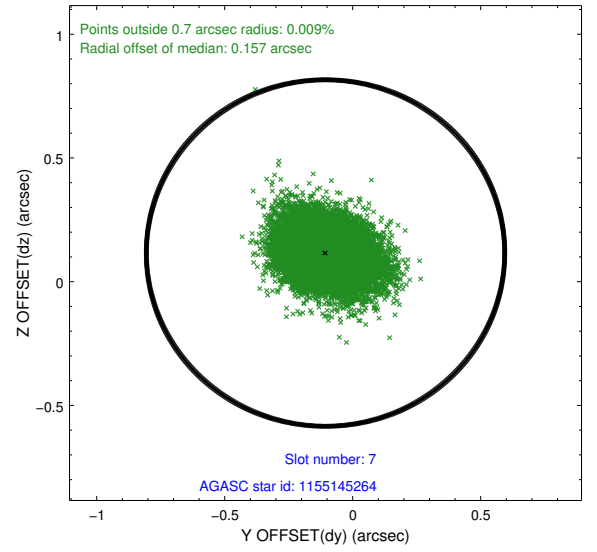
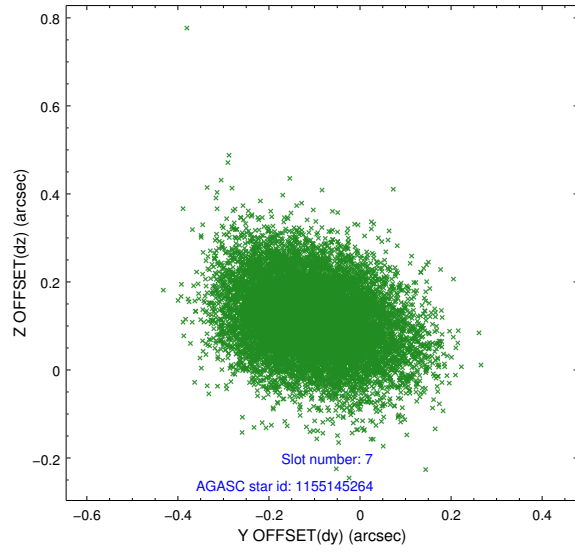
2.4.3 Slot 5



2.4.4 Slot 6

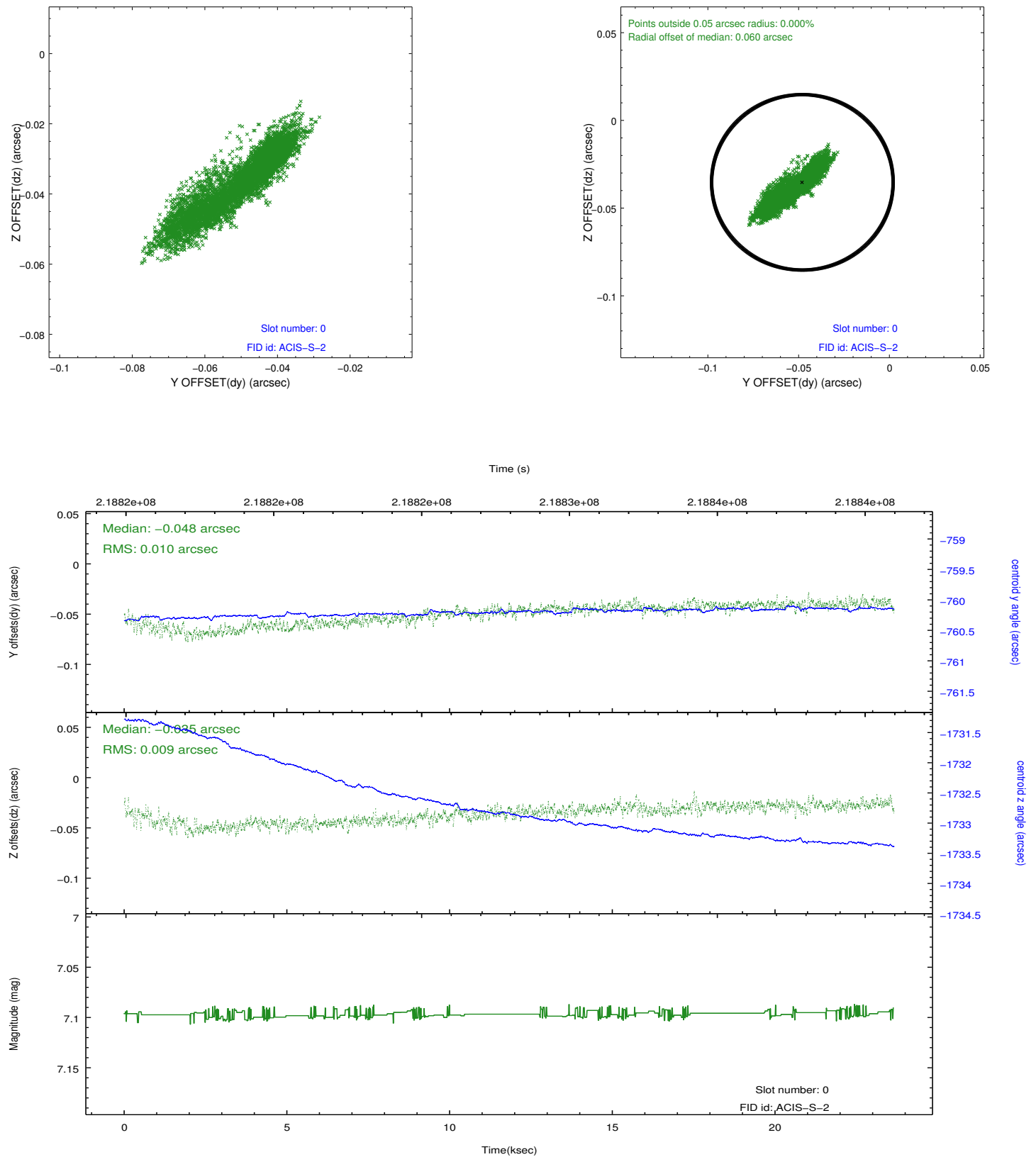


2.4.5 Slot 7

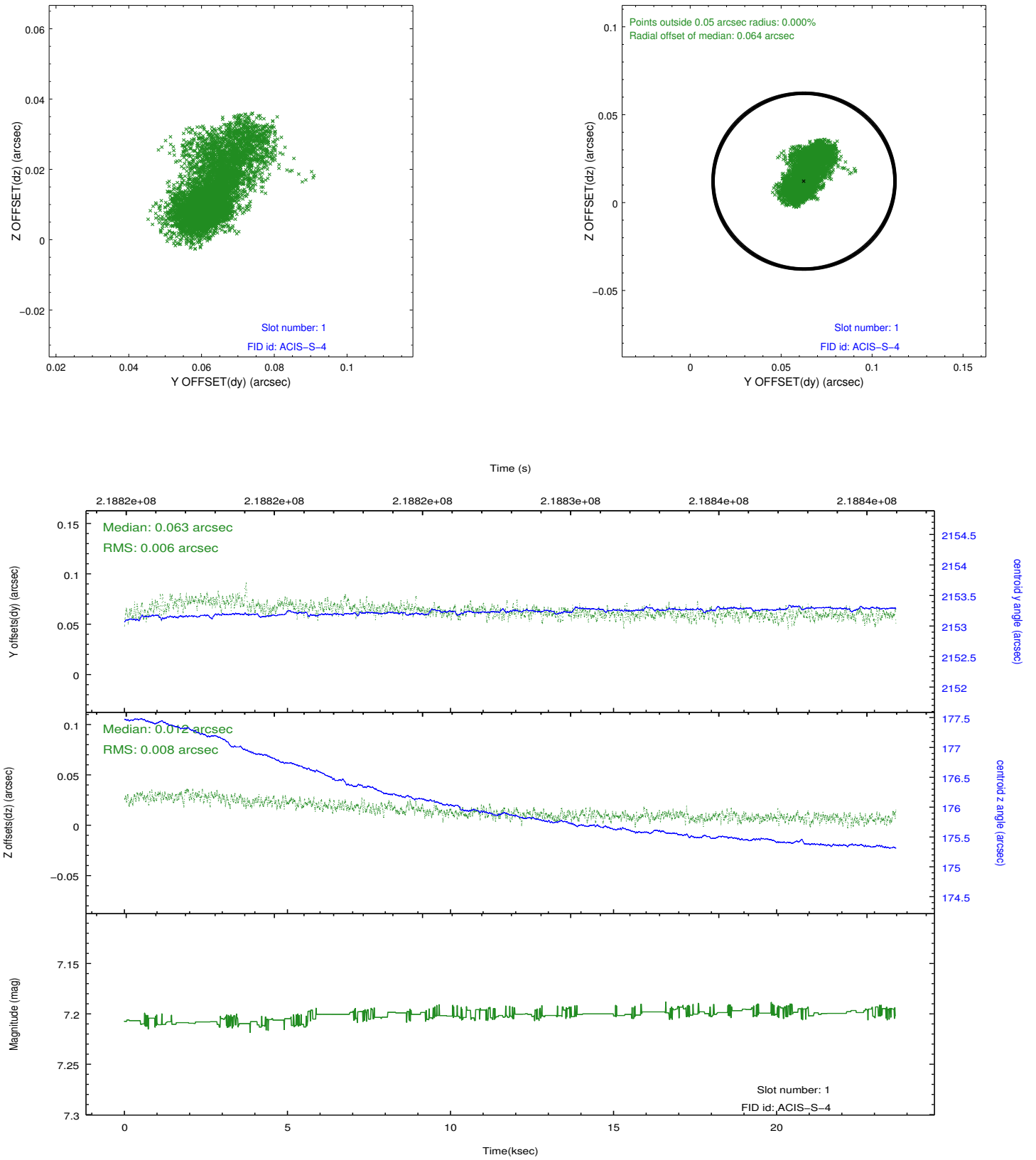


2.5 FID Slots

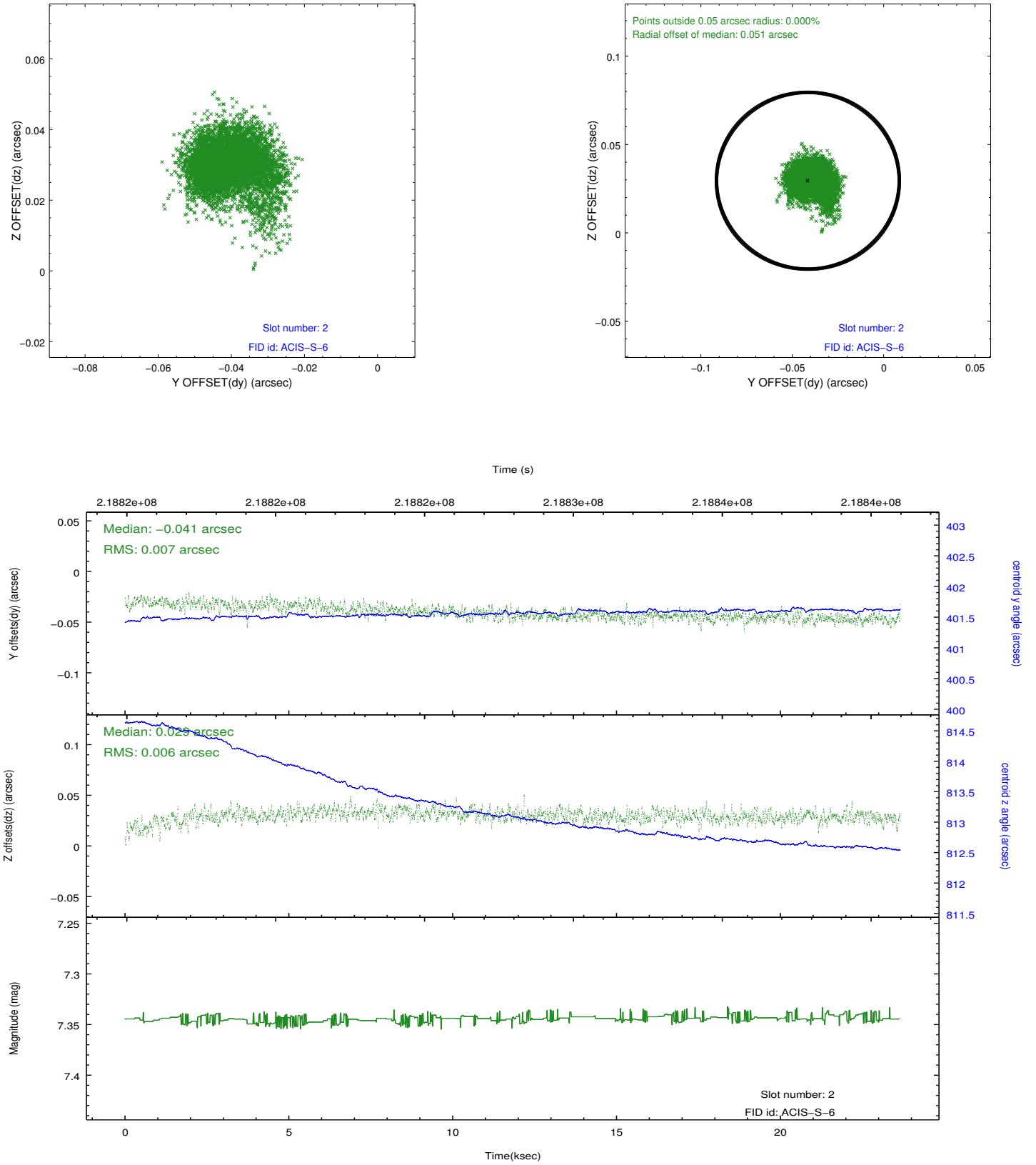
2.5.1 Slot 0



2.5.2 Slot 1



2.5.3 Slot 2



A Summary

A.1 Status

V&V Scientist	Jen Lauer
V&V Date (YYYY-MM-DD)	2013.01.04
V&V Edition	1
V&V Disposition and Status	OK
V&V Charge Time	23.64799

A.2 Comments