

# V&V Reference Report

## L2 ASCDS Version : 8.5

Observation 6166 - L2 Version 4  
Chandra X-Ray Center

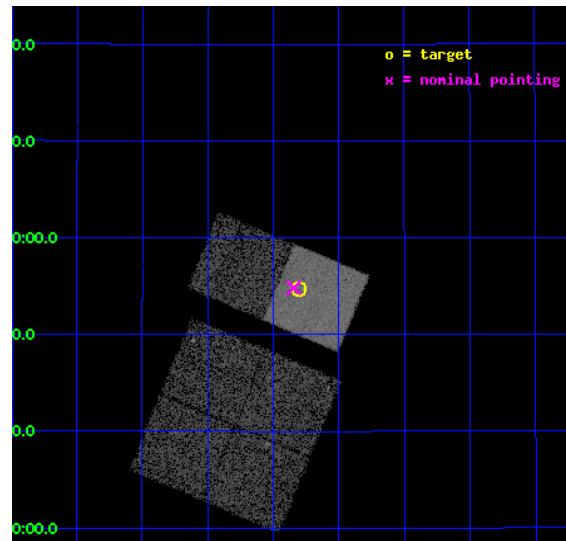
L2 Processing Date : Dec 11 2012

## Contents

<b>1</b>	<b>Front</b>	<b>2</b>
<b>2</b>	<b>OBI</b>	<b>3</b>
2.1	OBI . . . . .	3
2.1.1	Images . . . . .	3
2.1.2	Bias . . . . .	3
2.1.3	Parameters . . . . .	4
2.1.4	Events . . . . .	4
2.2	Compared Parameters . . . . .	5
2.3	Aspect . . . . .	6
2.4	Star Slots . . . . .	9
2.4.1	Slot 3 . . . . .	9
2.4.2	Slot 4 . . . . .	10
2.4.3	Slot 5 . . . . .	11
2.4.4	Slot 6 . . . . .	12
2.4.5	Slot 7 . . . . .	13
2.5	FID Slots . . . . .	14
2.5.1	Slot 0 . . . . .	14
2.5.2	Slot 1 . . . . .	15
2.5.3	Slot 2 . . . . .	16
<b>A</b>	<b>Summary</b>	<b>17</b>
A.1	Status . . . . .	17
A.2	Comments . . . . .	17

# 1 Front

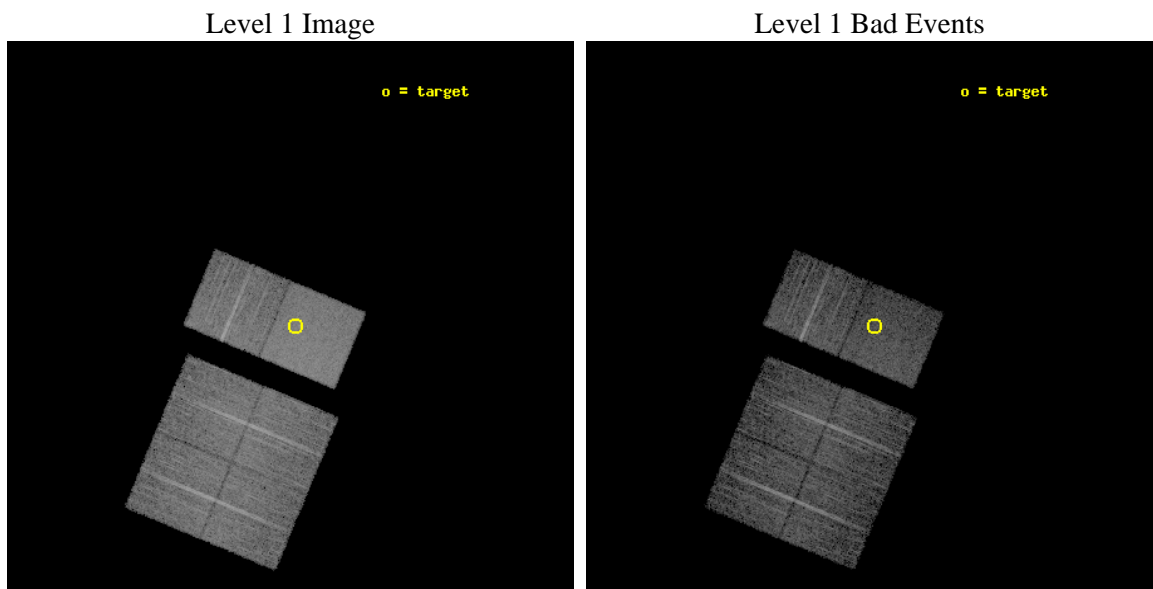
seq_num	200240	Sequence number
obs_id	6166	Observation id
title	AGE AND TEMPERATURE DEPENDENCE OF X-RAY ACTIVITY AT THE COOL END OF THE MAIN-SEQUENCE	Proposal title
observer	Dr Beate Stelzer	Principal investigator
object	HD 130948 BC	Source name
dtcycle	0	&#160
cycle	P	events from which exps? Prim/Second/Both
ra_targ	222.575417	Observer's specified target RA [deg]
dec_targ	23.911667	Observer's specified target Dec [deg]
ra_nom	222.58572950526	Nominal RA [deg]
dec_nom	23.913755183486	Nominal Dec [deg]
roll_nom	22.652400991373	Nominal Roll [deg]
revision	4	Processing version of data
ontime	7126.3999734521	Sum of GTIs [s]
livetime	7036.1612059853	Livetime [s]
ontime0	7126.3999734521	Sum of GTIs [s]
ontime1	7126.3999734521	Sum of GTIs [s]
ontime2	7126.3999734521	Sum of GTIs [s]
ontime3	7126.3999734521	Sum of GTIs [s]
ontime6	7126.3999734521	Sum of GTIs [s]
ontime7	7126.3999734521	Sum of GTIs [s]
l2events	61775	Number of level 2 events



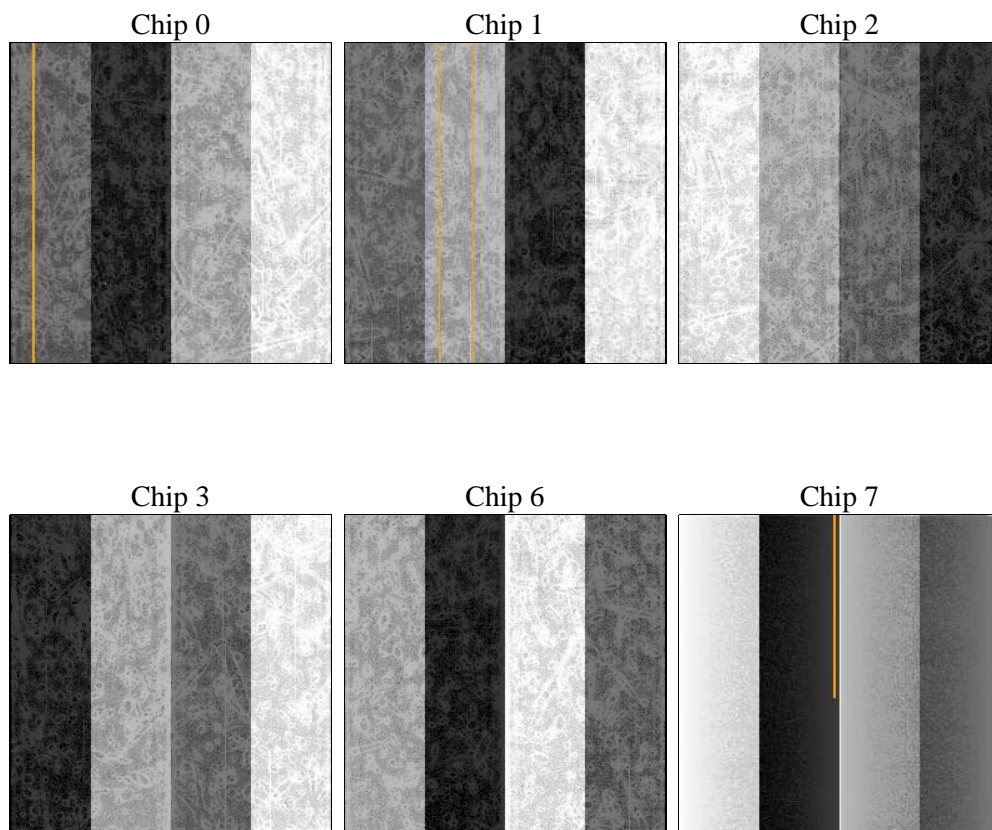
## 2 OBI

### 2.1 OBI

#### 2.1.1 Images



#### 2.1.2 Bias



### 2.1.3 Parameters

obi_num	0	Obi number	sched_exp_time	6985.113000	[s] Scheduled observation exposure time
ascdsver	8.5	Processing system revision	ontime	7126.3999734521	Sum of GTIs [s]
caldsver	4.5.4	&#160	ontime0	7126.3999734521	Sum of GTIs [s]
date	2012-12-12T00:17:06	Date and time of file creation	ontime1	7126.3999734521	Sum of GTIs [s]
revision	4	Processing version of data	ontime2	7126.3999734521	Sum of GTIs [s]
			ontime3	7126.3999734521	Sum of GTIs [s]
			ontime6	7126.3999734521	Sum of GTIs [s]
			ontime7	7126.3999734521	Sum of GTIs [s]
			l1events	359288	Number of level 1 events

### 2.1.4 Events

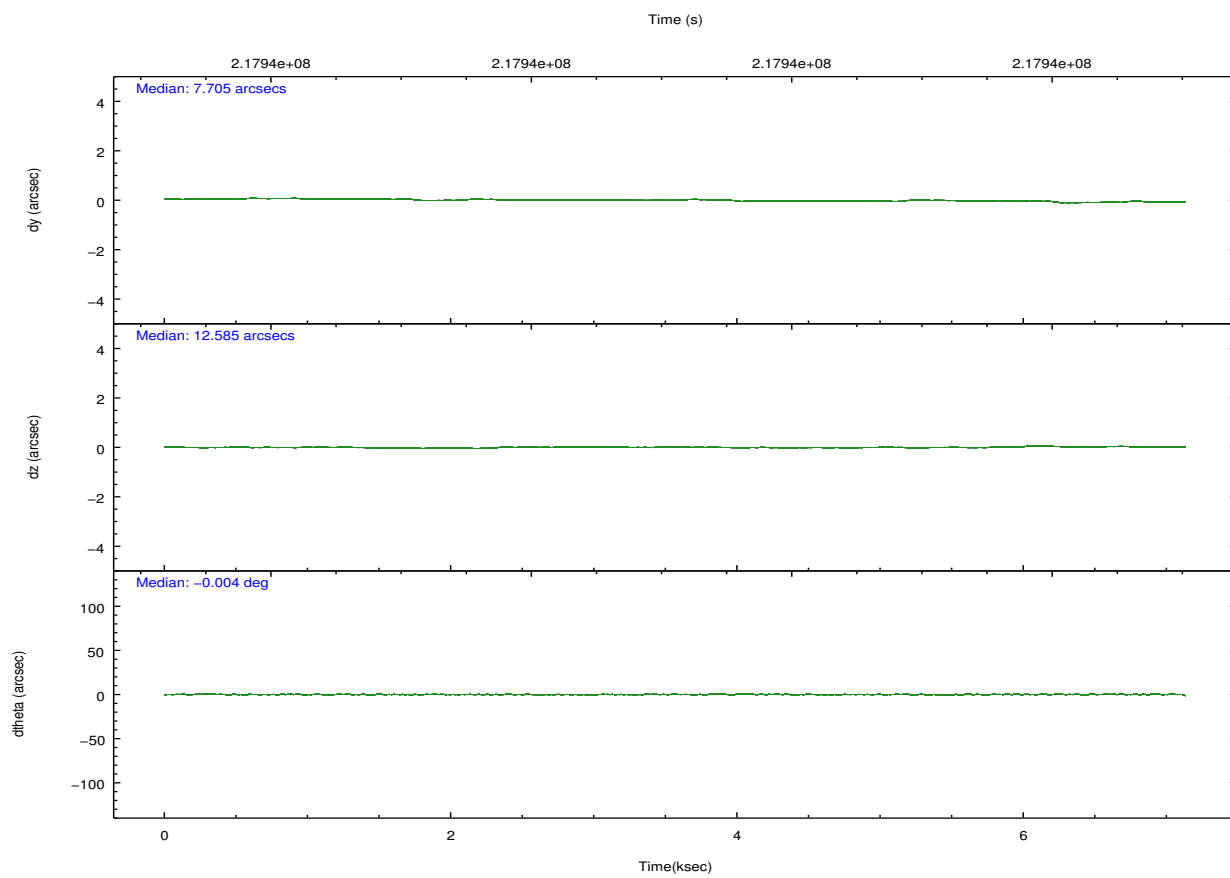
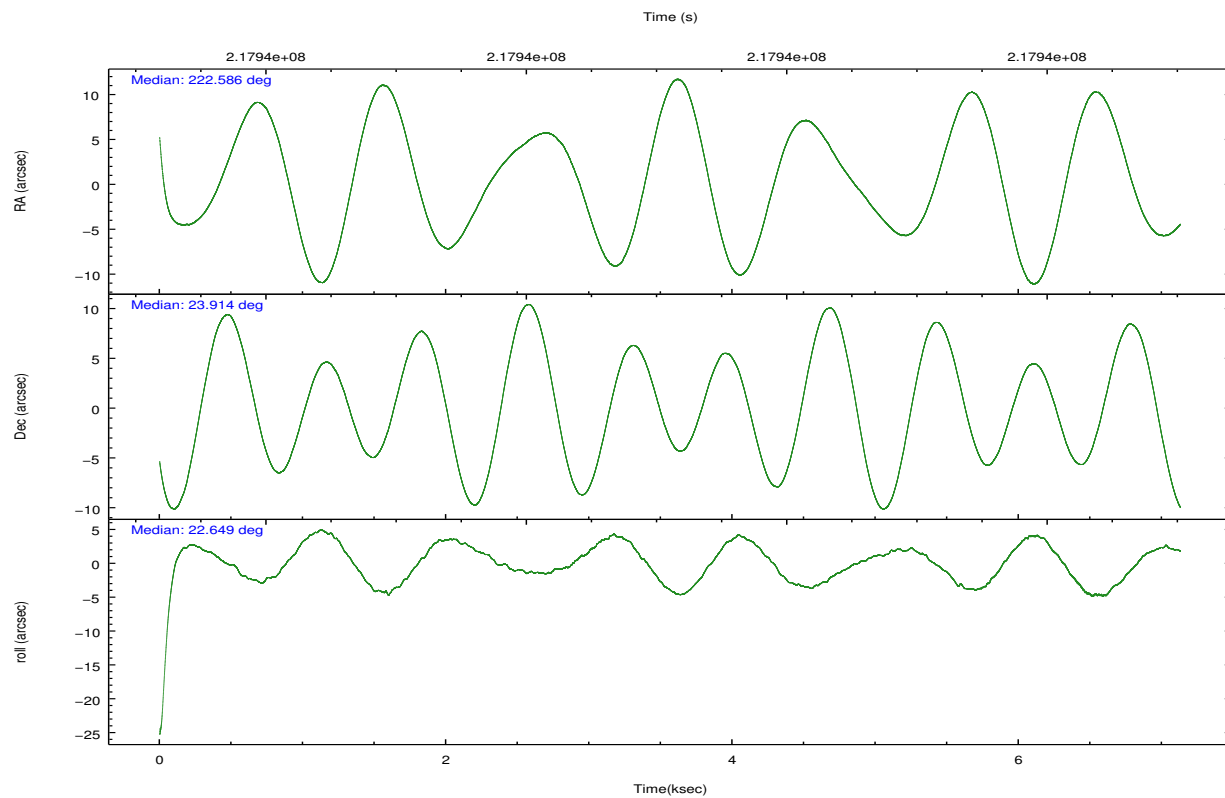
	ccd 0	ccd 1	ccd 2	ccd 3	ccd 6	ccd 7		ccd 0	ccd 1	ccd 2	ccd 3	ccd 6	ccd 7
level 1 events	54064	51926	56338	57414	59596	79950	grade 0 events	2903	2750	3150	3009	2820	3549
rejected events	47281	45082	49511	50818	52855	46402		5%	5%	5%	5%	4%	4%
rejected %	87%	86%	87%	88%	88%	58%	grade 1 events	43	27	34	53	30	107
								0%	0%	0%	0%	0%	0%
							grade 2 events	1526	1554	1431	1203	1468	6863
								2%	2%	2%	2%	2%	8%
							grade 3 events	684	709	657	704	695	3180
								1%	1%	1%	1%	1%	3%
							grade 4 events	632	688	700	678	626	3031
								1%	1%	1%	1%	1%	3%
							grade 5 events	2330	2349	2118	2557	2672	7582
								4%	4%	3%	4%	4%	9%
							grade 6 events	1238	1330	1084	1203	1358	17938
								2%	2%	1%	2%	2%	22%
							grade 7 events	44708	42519	47164	48007	49927	37700
								82%	81%	83%	83%	83%	47%



## 2.2 Compared Parameters

Parameter	Planned	Actual	Parameter	Planned	Actual
Instrument	ACIS	ACIS	Obspar format version number	7	7
Detector	ACIS-012367	ACIS-012367	Obspar file type	PREDICTED	ACTUAL
Grating	NONE	NONE	Obspar update status	NONE	UPDATED
Data mode	FAINT	FAINT	Number of optional ACIS chips dropped	0	0
Observation mode	POINTING	POINTING	On-chip summing requested	N	N
[deg] Pointing RA	222.568003	222.5857295052586	Subarray requested	NONE	NONE
[deg] Pointing Dec	23.891896	23.91375518348596	Alternating exposures requested	N	N
[deg] Pointing Roll	22.502999	22.65240099137349	[s] Primary exposure time	0.000000	3.2
[mm] SIM focus pos	-0.684267	-0.6828225247311905			
[mm] SIM defocus	0	0.001444936568705701			
[mm] SIM translation stage pos	-190.132523	-190.1400660498719			
[mm] SIM translation stage offset	0	0.00754346686406393			
[s] Observation start time (MET)	217935684.184000	217934527.48991			
Observation start date	2004-11-27T09:40:20	2004-11-27T09:22:07			
[s] Observation end time (MET)	217942669.184000	217942888.92779			
Observation end date	2004-11-27T11:36:45	2004-11-27T11:41:28			
Read mode	TIMED	TIMED			

## 2.3 Aspect

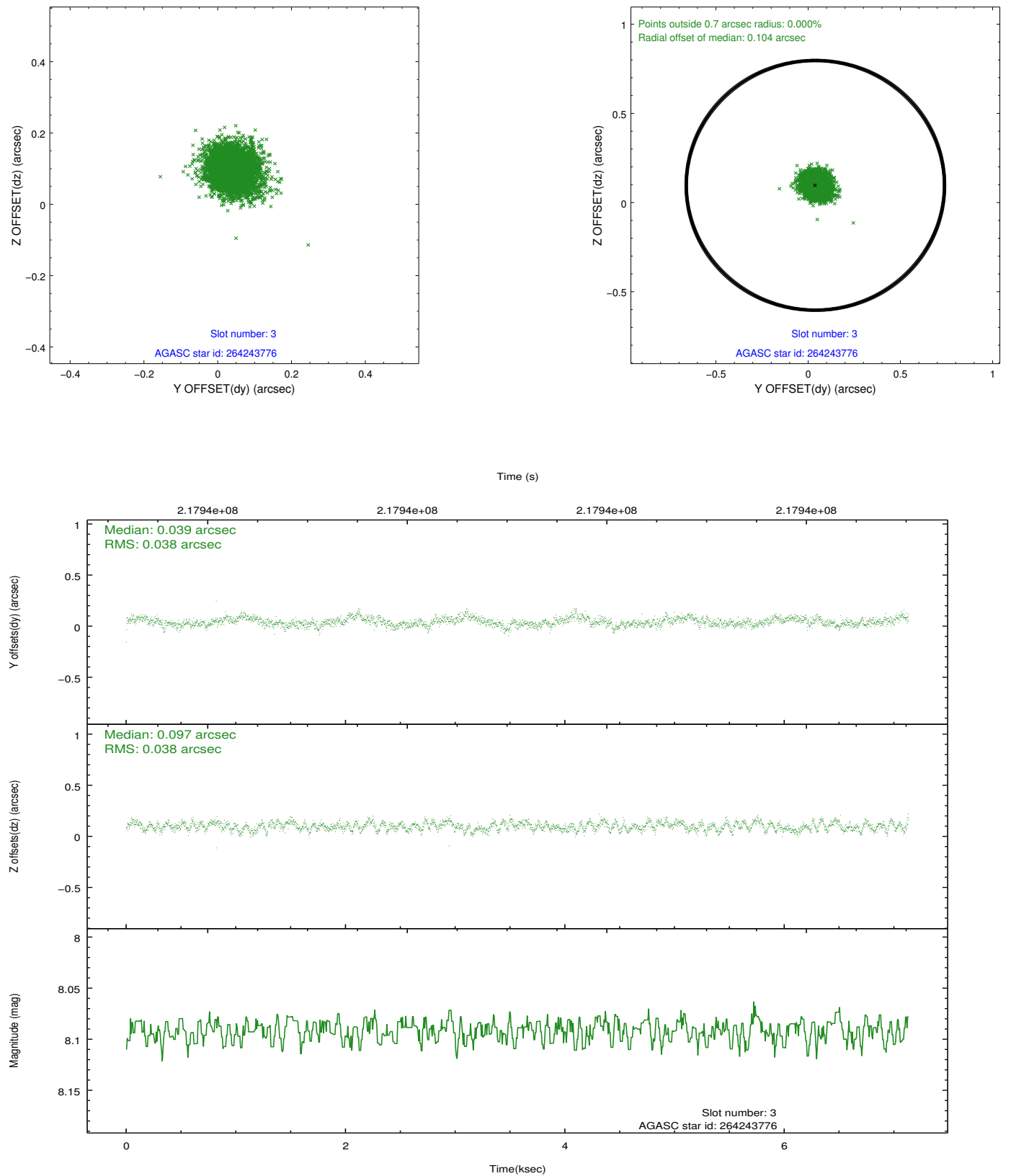


### Slot Statistics

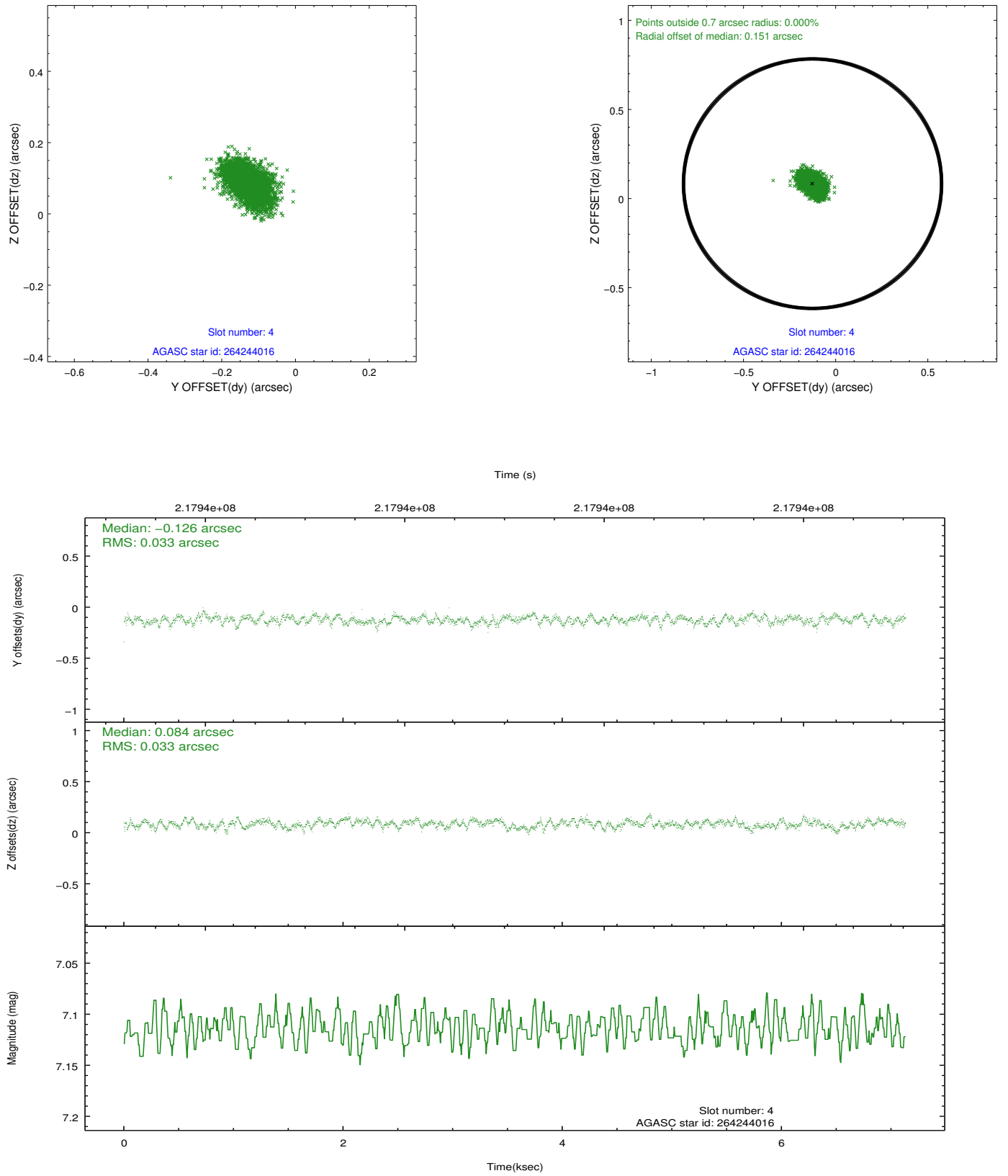
slot	status	id	mag	n_pts	med_dy	med_dz	dr1	dr2	ra	dec	mean_y	mean_z
0	FID	ACIS-S-2	7.10	1740	-0.010	-0.040	0.007	0.012	0.000000	0.000000	-760.49	-1733.93
1	FID	ACIS-S-4	7.19	1740	0.074	0.015	0.006	0.010	0.000000	0.000000	2152.51	173.75
2	FID	ACIS-S-5	7.23	1740	-0.096	0.034	0.007	0.012	0.000000	0.000000	-1812.37	168.38
3	GUIDE	264243776	8.09	3480	0.039	0.097	0.057	0.092	222.025139	23.495408	-2200.51	-629.46
4	GUIDE	264244016	7.11	3480	-0.126	0.084	0.049	0.081	223.121774	23.801362	1561.30	-995.64
5	GUIDE	264247808	8.87	3480	0.057	0.026	0.068	0.108	222.238250	23.559393	-1462.14	-688.49
6	GUIDE	264247840	7.09	3479	-0.033	-0.187	0.045	0.074	221.913453	24.097555	-1702.36	1511.79
7	GUIDE	264244712	8.90	3479	0.059	-0.020	0.064	0.105	222.948863	24.755978	2341.27	2399.78

## 2.4 Star Slots

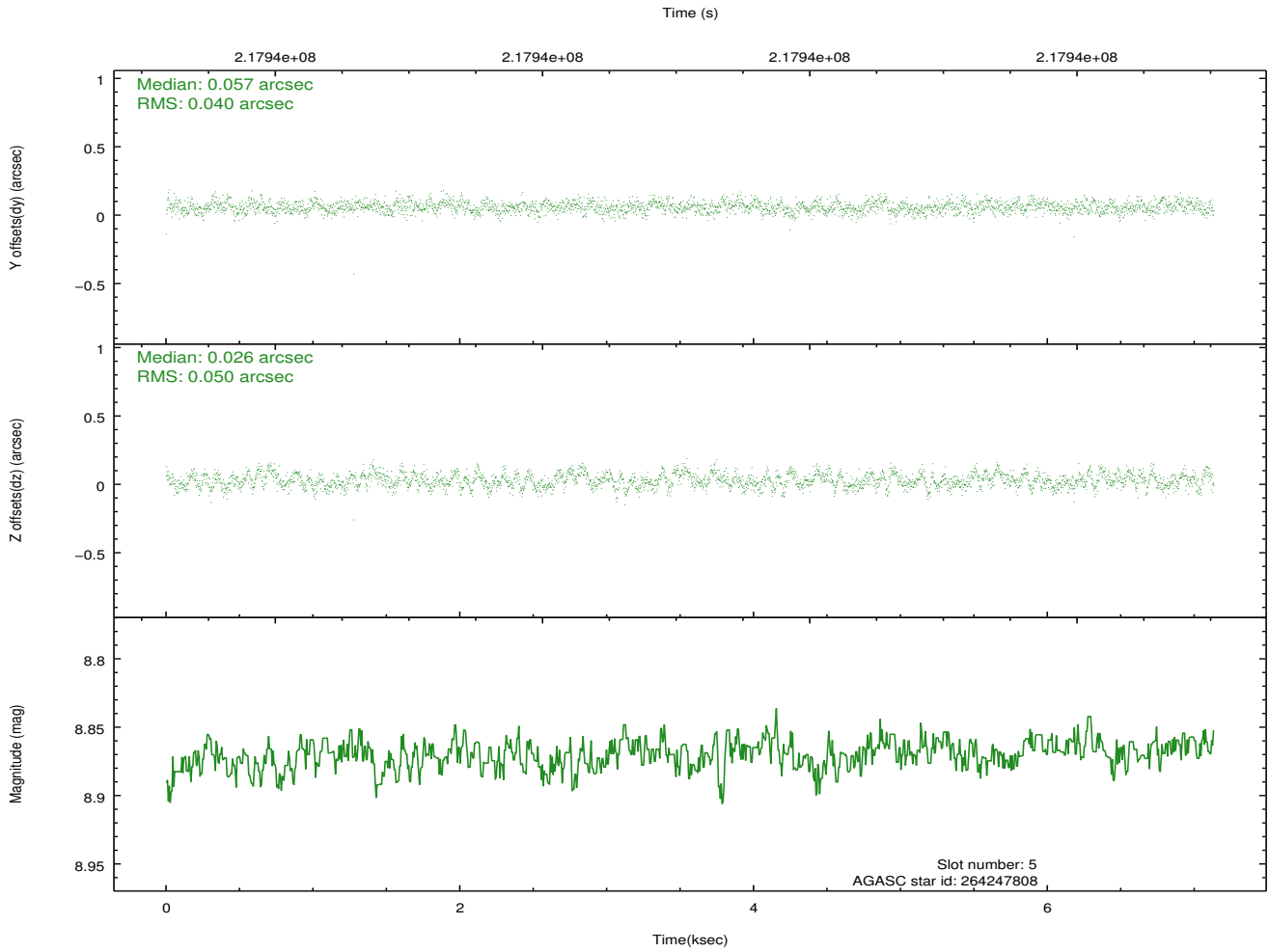
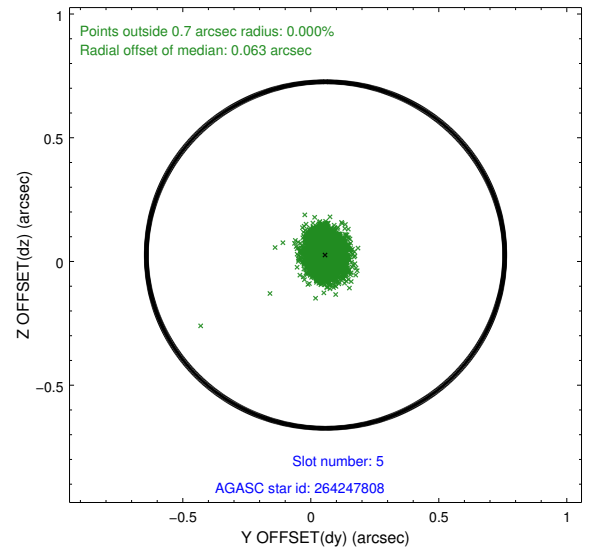
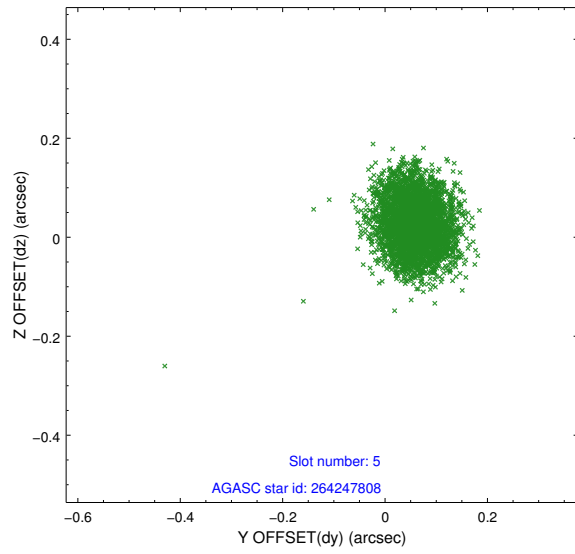
### 2.4.1 Slot 3



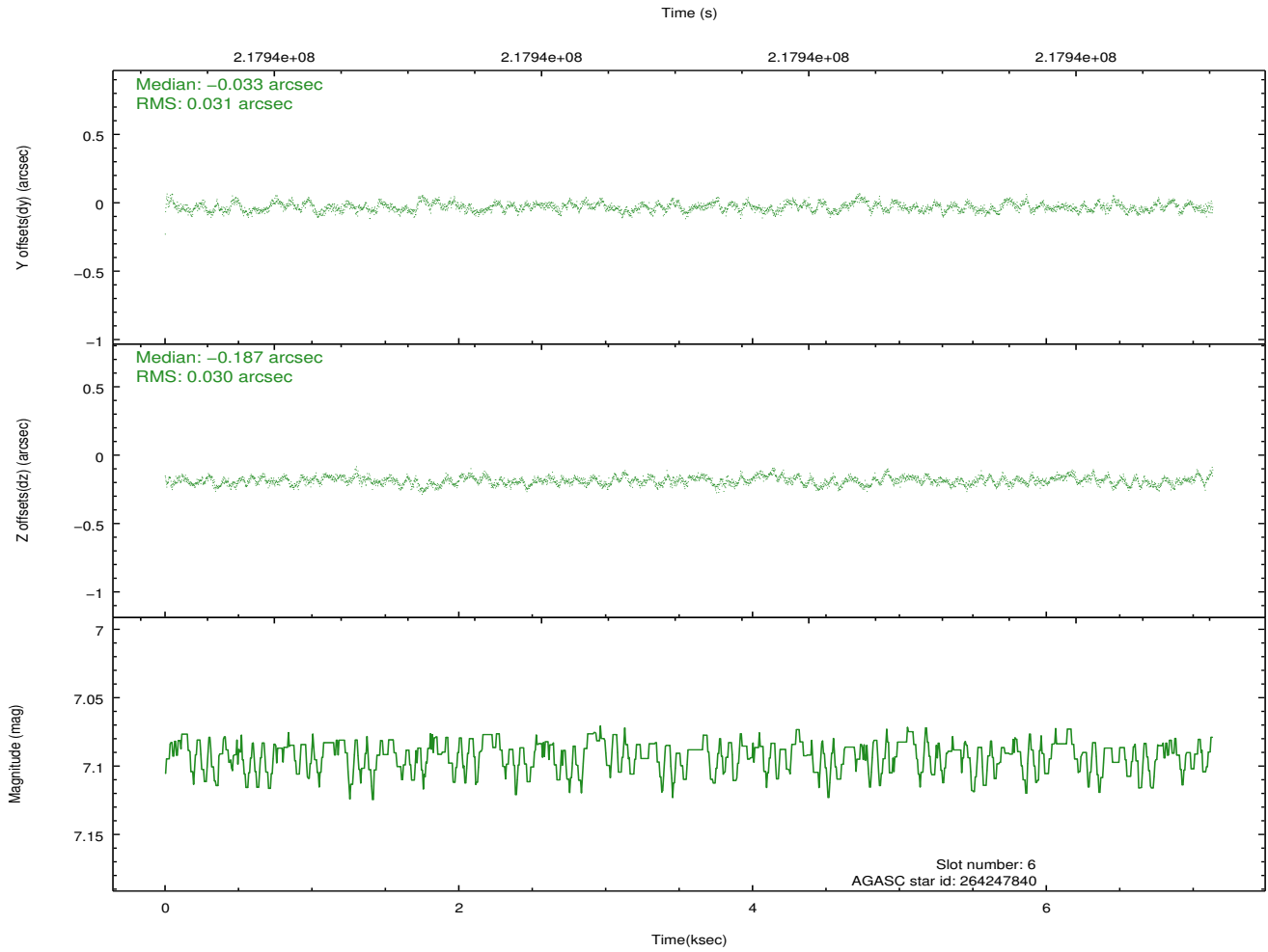
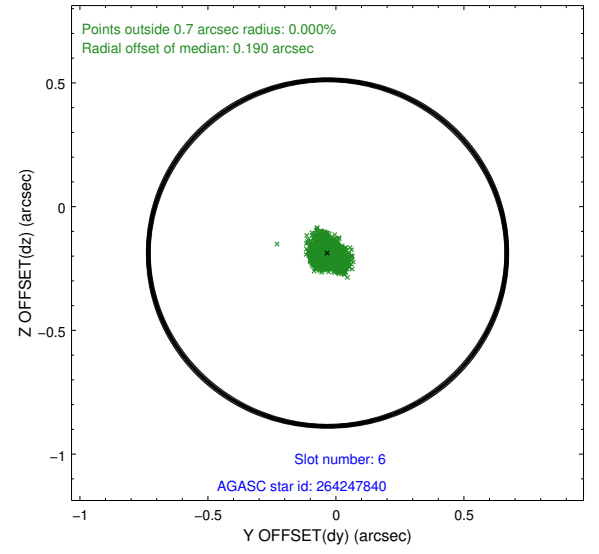
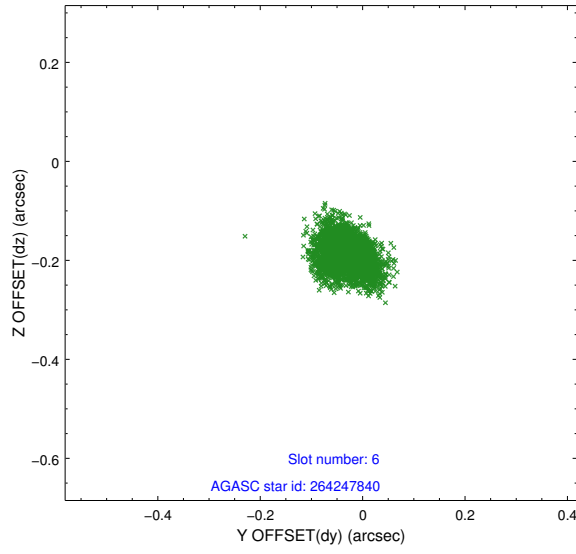
## 2.4.2 Slot 4



### 2.4.3 Slot 5

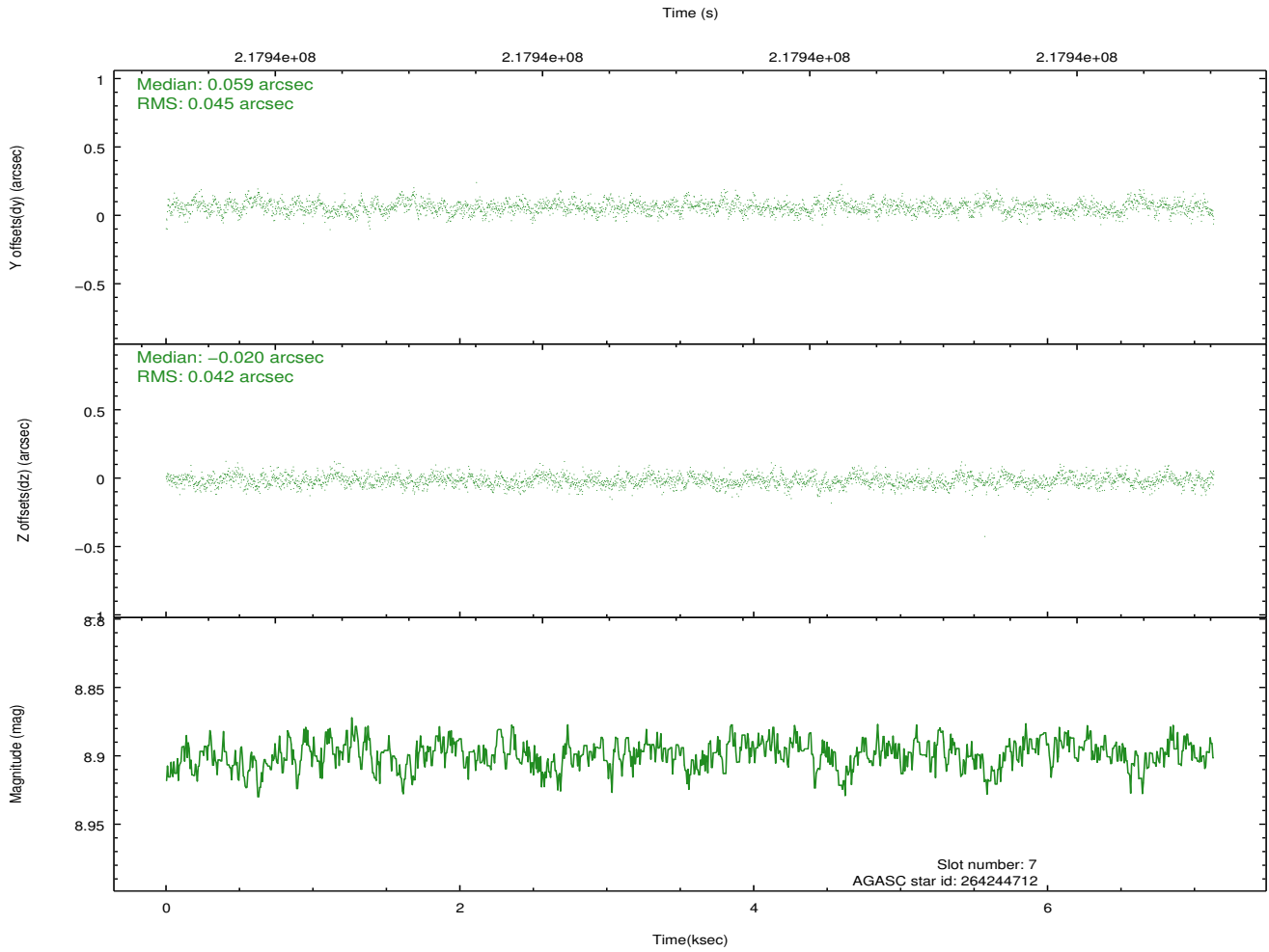
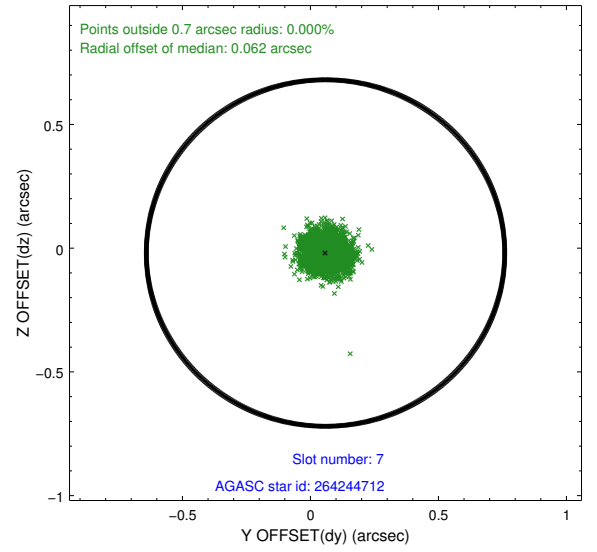
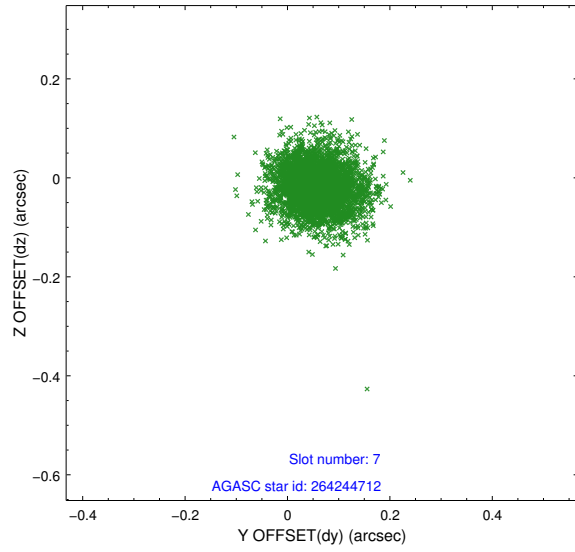


## 2.4.4 Slot 6



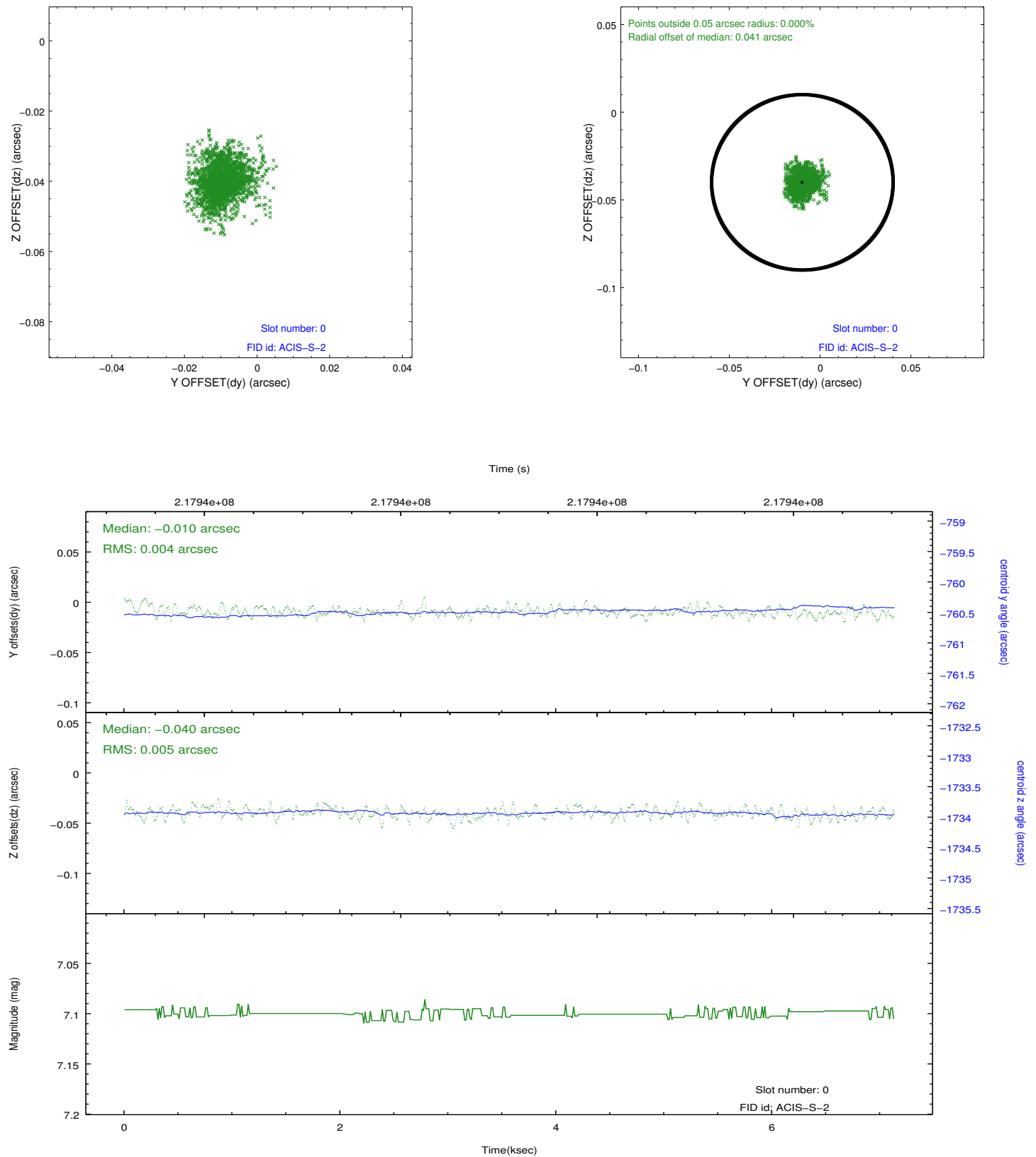


## 2.4.5 Slot 7

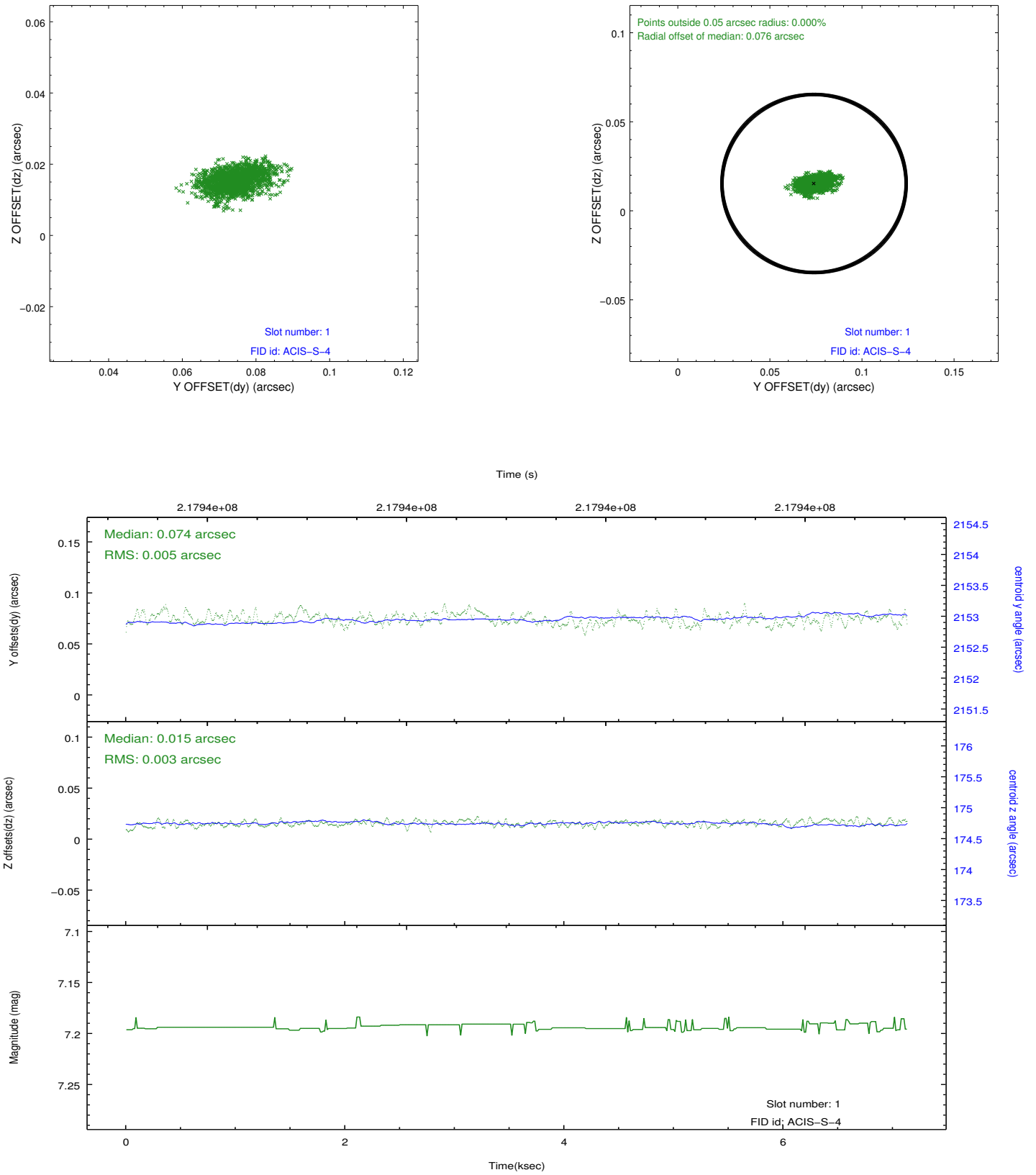


## 2.5 FID Slots

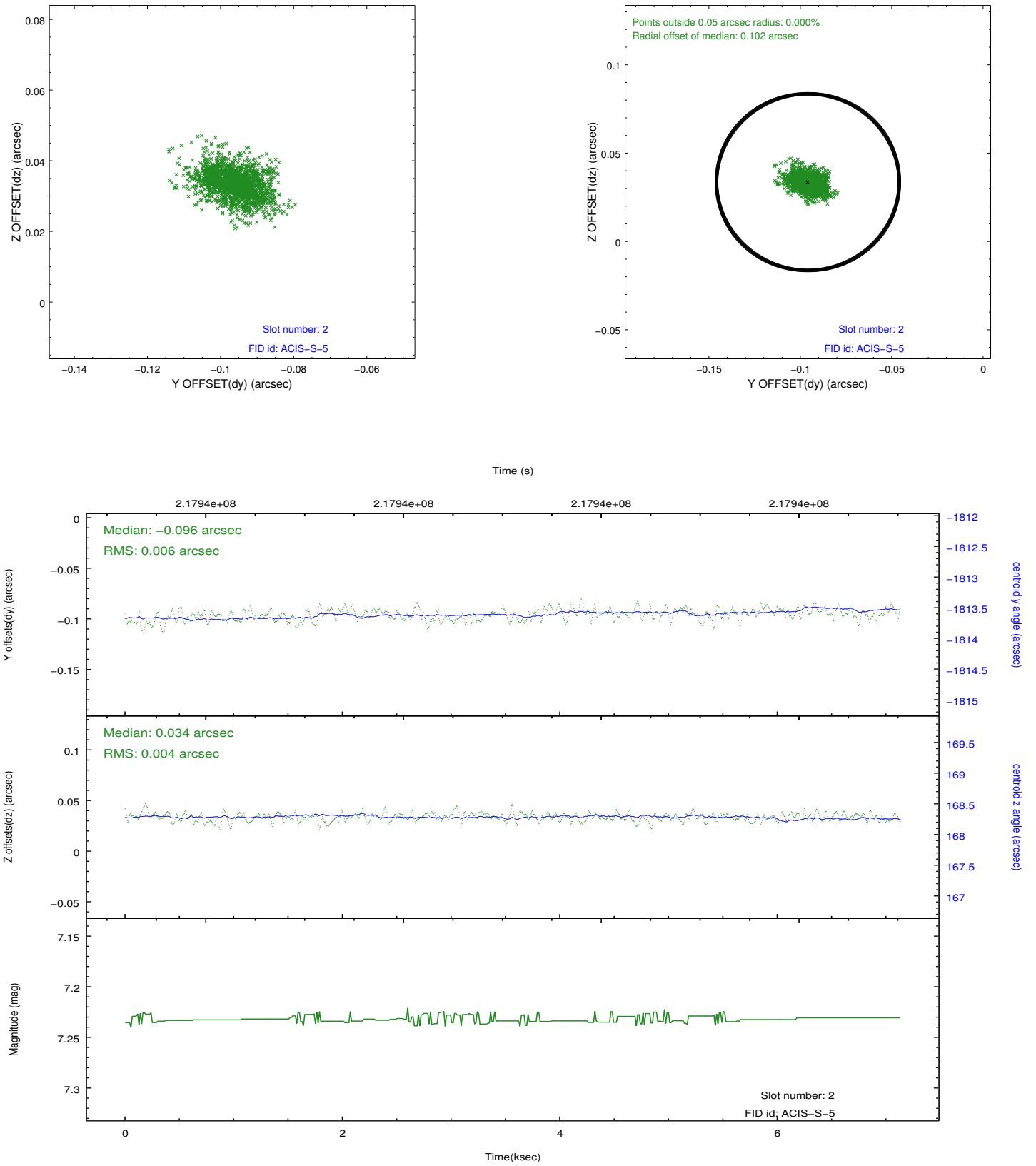
### 2.5.1 Slot 0



## 2.5.2 Slot 1



### 2.5.3 Slot 2



## A Summary

### A.1 Status

V&V Scientist	Joy Nichols
V&V Date (YYYY-MM-DD)	2013.01.17
V&V Edition	1
V&V Disposition and Status	OK
V&V Charge Time	7.129599

### A.2 Comments