

# V&V Reference Report

## L2 ASCDS Version : 7.6.7.2

Observation 5178 - L2 Version 001  
Chandra X-Ray Center

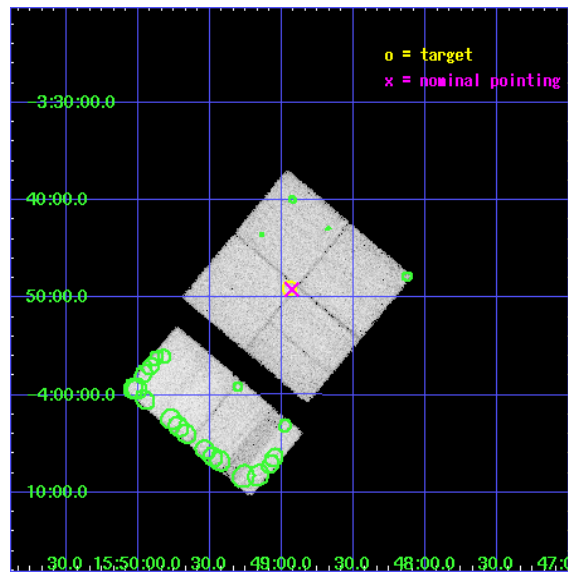
L2 Processing Date : May 1 2006

## Contents

<b>1</b>	<b>Front</b>	<b>2</b>
<b>2</b>	<b>OBI</b>	<b>3</b>
2.1	OBI . . . . .	3
2.1.1	Images . . . . .	3
2.1.2	Bias . . . . .	3
2.1.3	Parameters . . . . .	4
2.1.4	Events . . . . .	4
2.2	Compared Parameters . . . . .	5
2.3	Aspect . . . . .	6
2.4	Star Slots . . . . .	9
2.4.1	Slot 3 . . . . .	9
2.4.2	Slot 4 . . . . .	10
2.4.3	Slot 5 . . . . .	11
2.4.4	Slot 6 . . . . .	12
2.4.5	Slot 7 . . . . .	13
2.5	FID Slots . . . . .	14
2.5.1	Slot 0 . . . . .	14
2.5.2	Slot 1 . . . . .	15
2.5.3	Slot 2 . . . . .	16
<b>3</b>	<b>Point Sources</b>	<b>17</b>
<b>A</b>	<b>Summary</b>	<b>18</b>
A.1	Status . . . . .	18
A.2	Comments . . . . .	18

# 1 Front

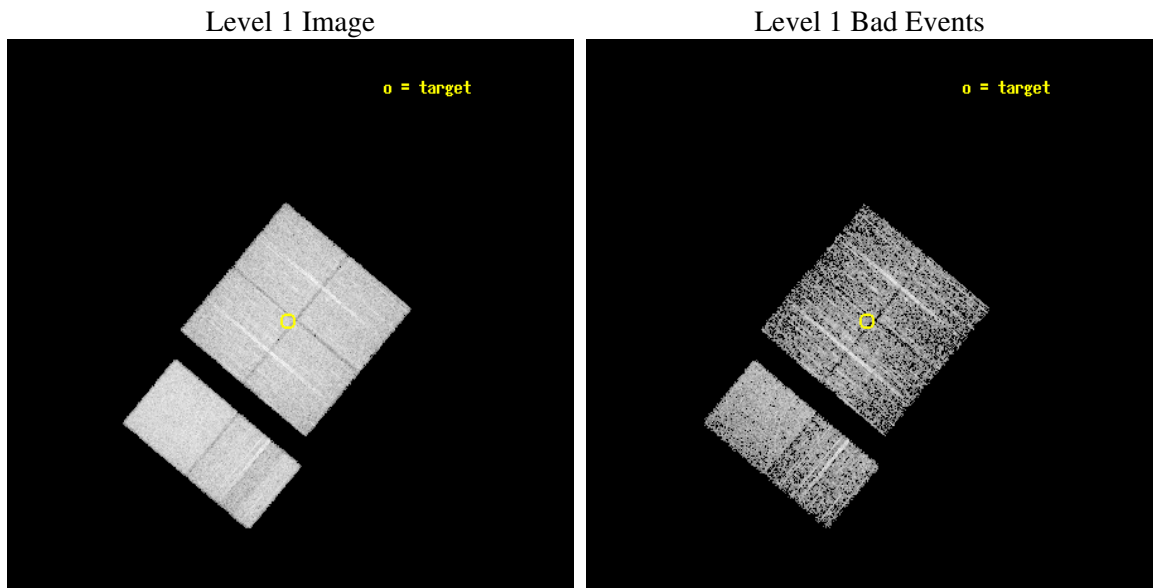
seq_num	200286
obs_id	5178
title	Alternate - Search for beta Pic analogs extension
observer	Professor Gordon Garmire
object	HR 5875
dtcycle	0
cycle	P
ra_targ	237.236667
dec_targ	-3.818333
ra_nom	237.23240870754
dec_nom	-3.8196765104771
roll_nom	219.91324228941
revision	2
ontime	2921.5999891162
livetime	2884.6049308777
ontime0	2921.5999891162
ontime1	2921.5999891162
ontime2	2921.5999891162
ontime3	2921.5999891162
ontime6	2921.5999891162
ontime7	2921.5999891162
l2events	201952



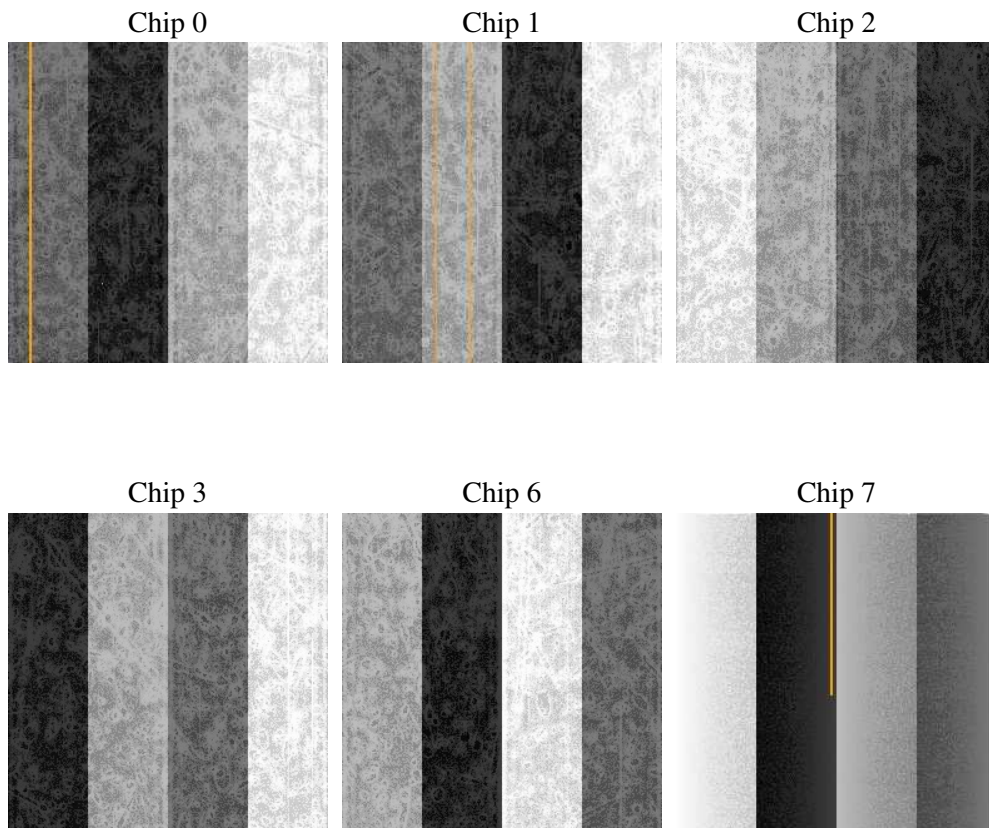
## 2 OBI

### 2.1 OBI

#### 2.1.1 Images



#### 2.1.2 Bias



### 2.1.3 Parameters

obi_num	0
ascdsver	7.6.7.2
caldbver	3.2.1
date	2006-05-01T10:47:54
revision	2

sched_exp_time	2963.965000
ontime	2926.6261996031
ontime0	2926.6261797249
ontime1	2926.6261996031
ontime2	2926.6261797249
ontime3	2926.6261996031
ontime6	2926.6261996031
ontime7	2926.6261996031
llevents	338870

### 2.1.4 Events

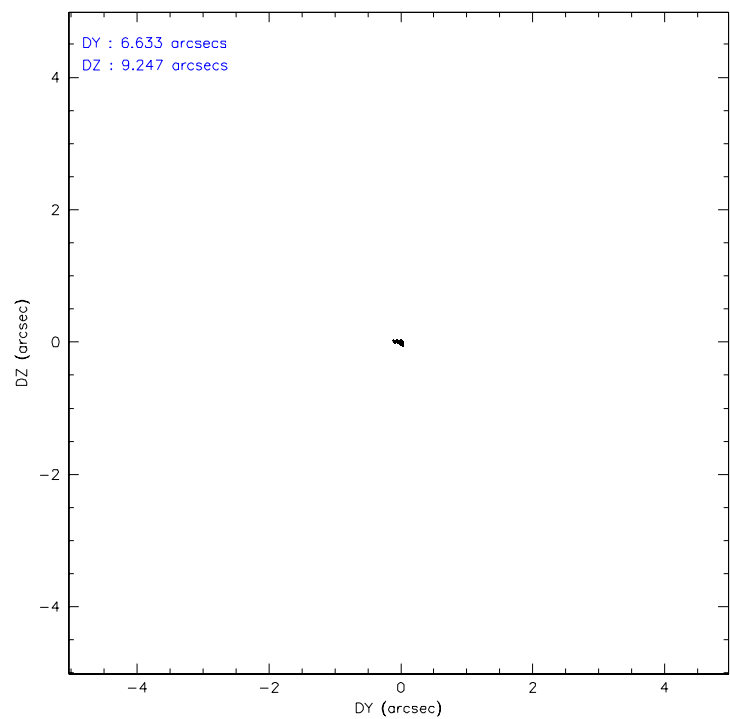
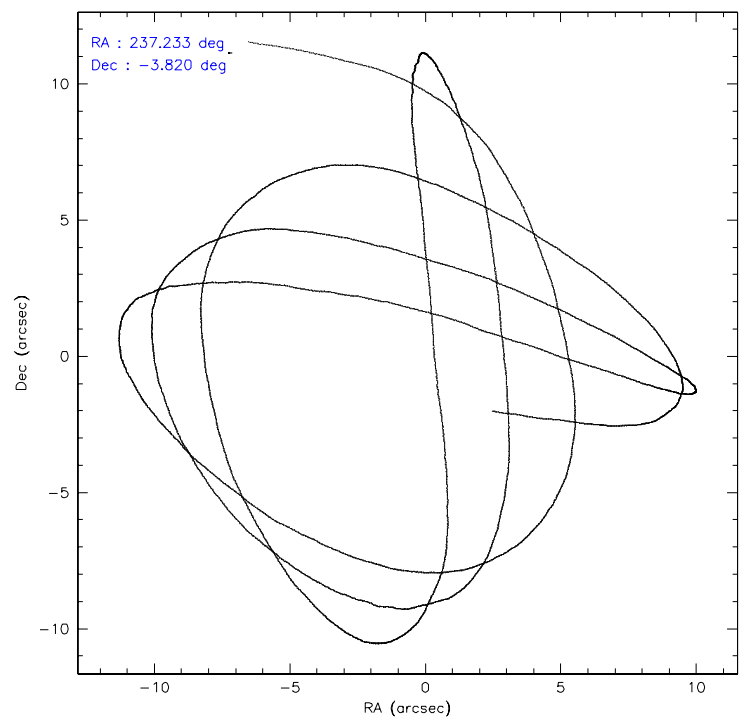
	ccd 0	ccd 1	ccd 2	ccd 3	ccd 6	ccd 7
level 1 events	51912	52978	53954	55231	55129	69666
rejected events	18640	19296	20462	20857	21061	25647
rejected %	35%	36%	37%	37%	38%	36%

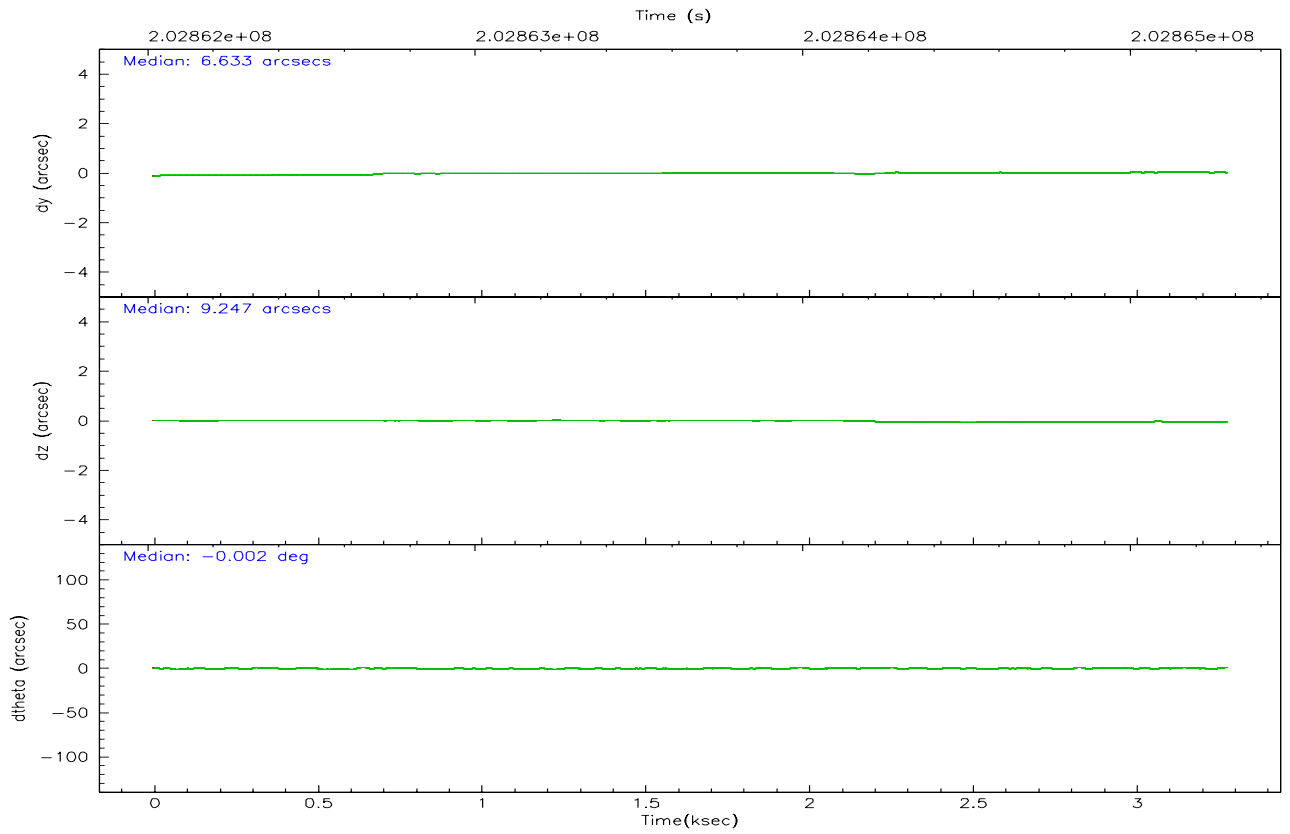
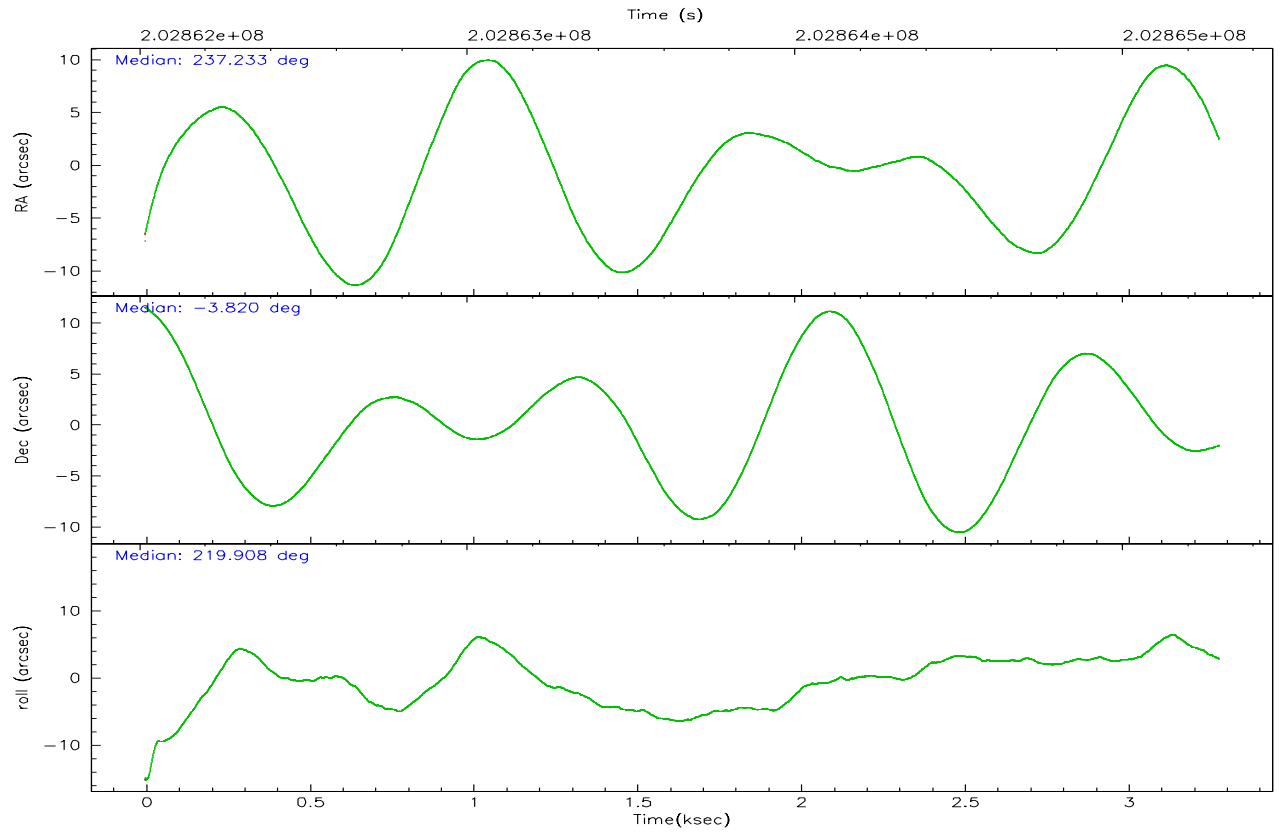
	ccd 0	ccd 1	ccd 2	ccd 3	ccd 6	ccd 7
grade 0 events	25352	24231	26197	26420	25251	3298
	48%	45%	48%	47%	45%	4%
grade 1 events	139	109	165	175	104	22
	0%	0%	0%	0%	0%	0%
grade 2 events	3593	4677	3170	3429	4154	8618
	6%	8%	5%	6%	7%	12%
grade 3 events	1324	1364	1307	1419	1279	1988
	2%	2%	2%	2%	2%	2%
grade 4 events	1273	1363	1236	1377	1325	1949
	2%	2%	2%	2%	2%	2%
grade 5 events	966	991	995	1027	1128	2181
	1%	1%	1%	1%	2%	3%
grade 6 events	1761	2074	1604	1759	2126	28249
	3%	3%	2%	3%	3%	40%
grade 7 events	17504	18169	19280	19625	19762	23361
	33%	34%	35%	35%	35%	33%

## 2.2 Compared Parameters

Parameter	Planned	Actual	Parameter	Planned	Actual
Instrument	ACIS	ACIS	Obspar format version number	6	6
Detector	ACIS-012367	ACIS-012367	Obspar file type	PREDICTED	ACTUAL
Grating	NONE	NONE	Obspar update status	NONE	UPDATED
Data mode	FAINT	FAINT	On-chip summing requested	N	N
Observation mode	POINTING	POINTING	Subarray requested	NONE	NONE
Pointing RA	237.241538	237.2324087075399	Alternating exposures requested	N	N
Pointing Dec	-3.793934	-3.819676510477126	Primary exposure time	0.000000	3.2
Pointing Roll	219.705173	219.9132422894066			
SIM focus pos (mm)	-0.782348	-0.7809083437167272			
SIM defocus (mm)	0	0.001439871863259334			
SIM translation stage pos (mm)	-233.592463	-233.5874344608287			
SIM translation stage offset (mm)	0	-0.005018542100998502			
Observation start time	202862326.184000	202861300.14306			
Observation start date	2004-06-05T22:37:42	2004-06-05T22:21:40			
Observation end time	202865290.184000	202865521.09324			
Observation end date	2004-06-05T23:27:06	2004-06-05T23:32:01			
Read mode	TIMED	TIMED			

## 2.3 Aspect



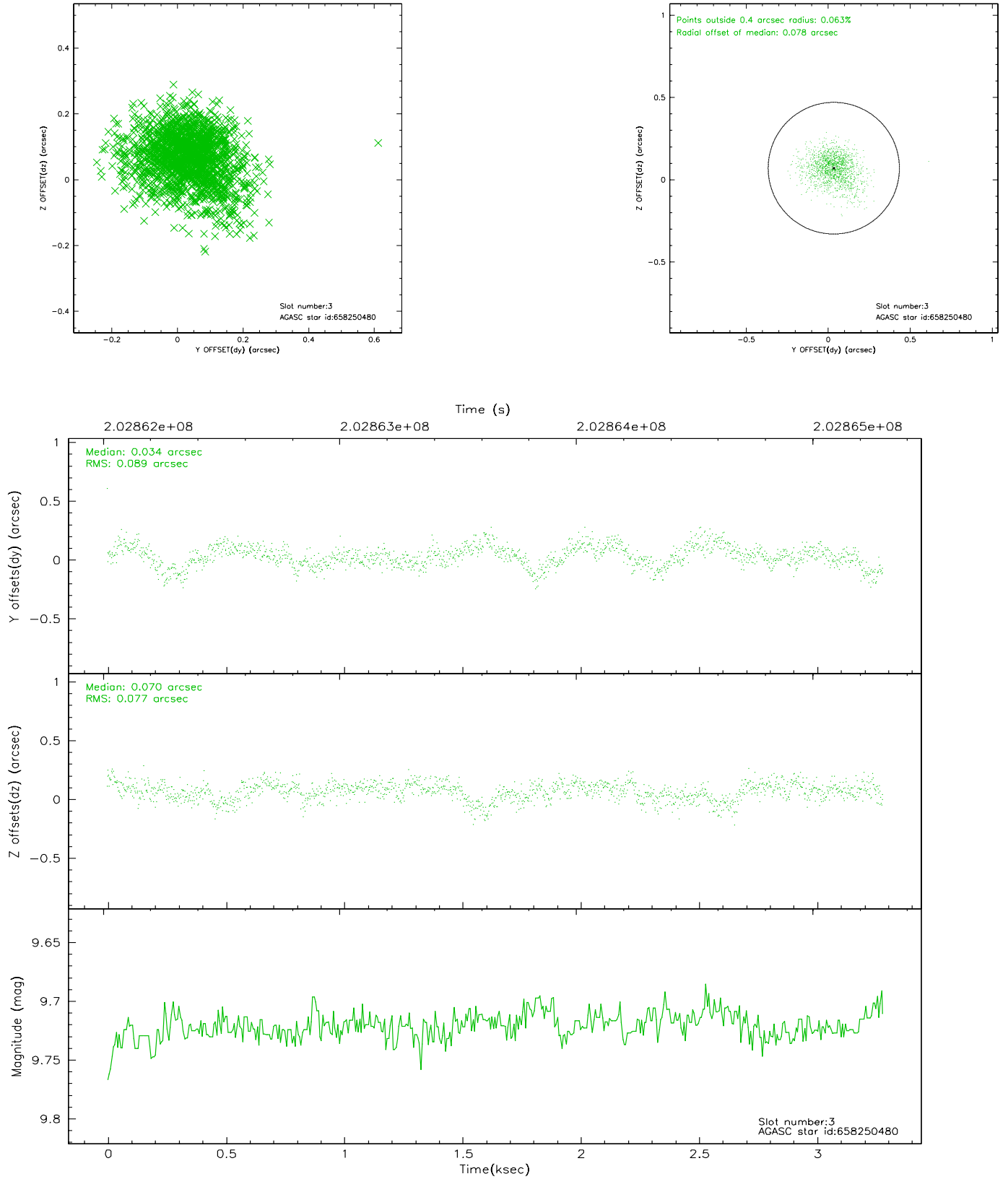


### Slot Statistics

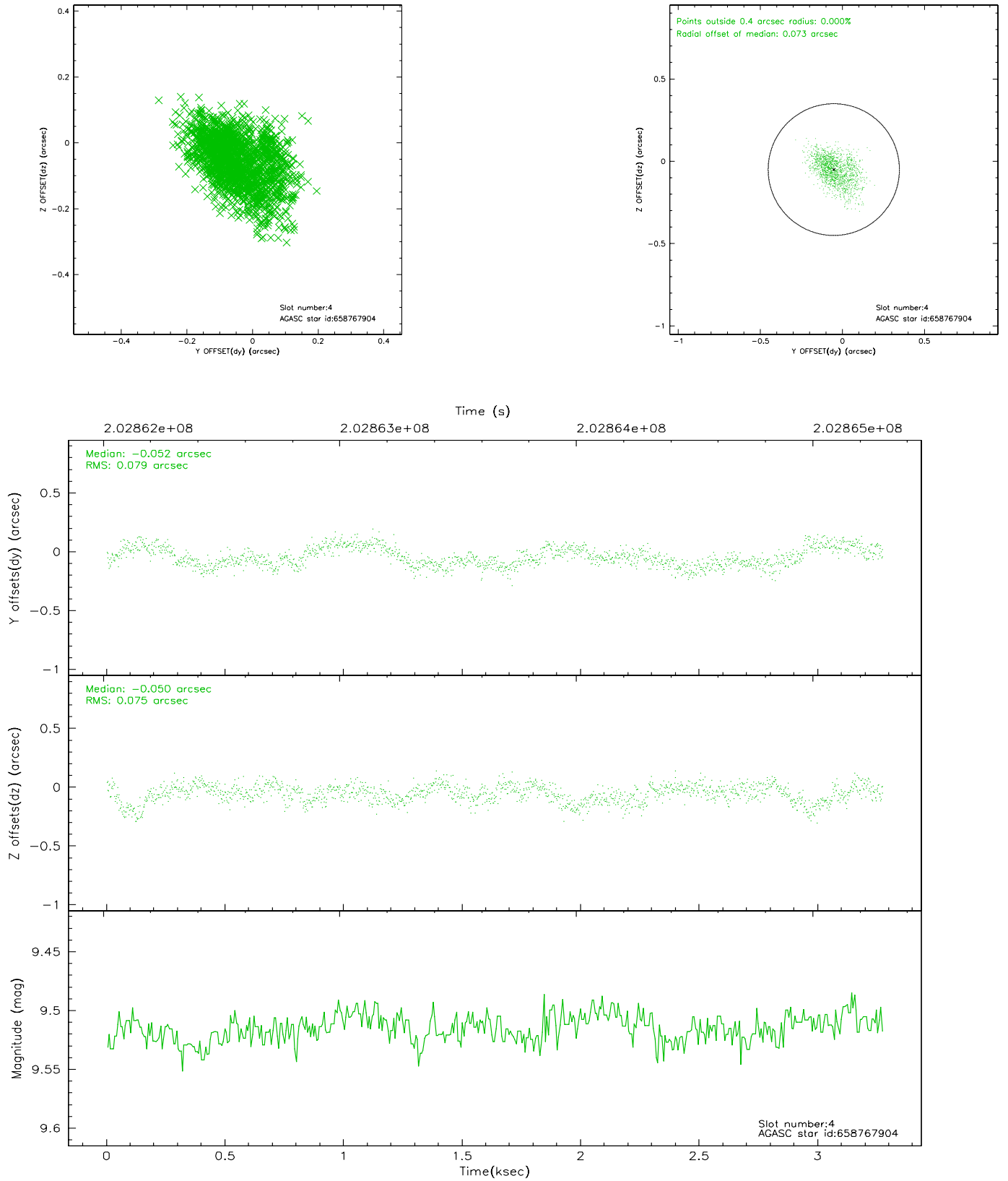
slot	status	id	mag	n_pts	med_dy	med_dz	dr1	dr2	ra	dec	mean_y	mean_z
0	FID	ACIS-I-1	7.24	801	-0.028	0.079	0.007	0.010	0.000000	0.000000	933.04	-832.61
1	FID	ACIS-I-5	7.23	801	-0.110	0.018	0.006	0.009	0.000000	0.000000	-1814.08	1063.85
2	FID	ACIS-I-6	7.25	801	0.047	-0.026	0.007	0.012	0.000000	0.000000	396.56	1710.51
3	GUIDE	658250480	9.72	1600	0.034	0.070	0.121	0.214	237.316992	-3.637366	-567.63	-260.92
4	GUIDE	658767904	9.52	1596	-0.052	-0.050	0.116	0.190	237.638455	-4.051308	-504.07	1622.87
5	GUIDE	658772672	9.49	1599	-0.053	0.016	0.091	0.153	236.669407	-3.822099	1646.99	-1233.66
6	GUIDE	658773496	9.39	1601	0.049	-0.029	0.113	0.179	236.554007	-3.936477	2230.37	-1183.10
7	GUIDE	658771168	10.44	1577	0.007	0.008	0.205	0.318	237.327066	-4.593406	1604.74	2409.38

## 2.4 Star Slots

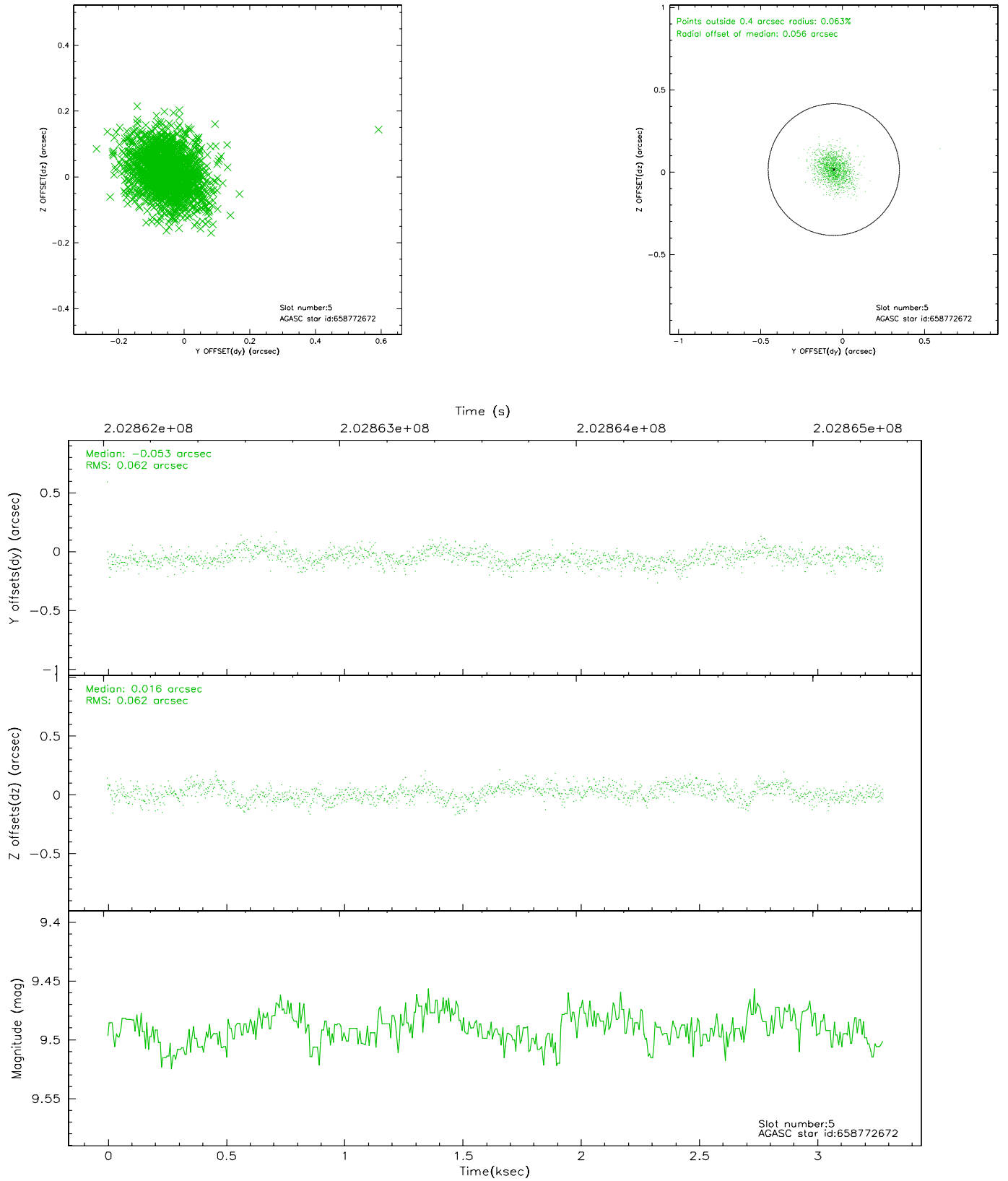
### 2.4.1 Slot 3



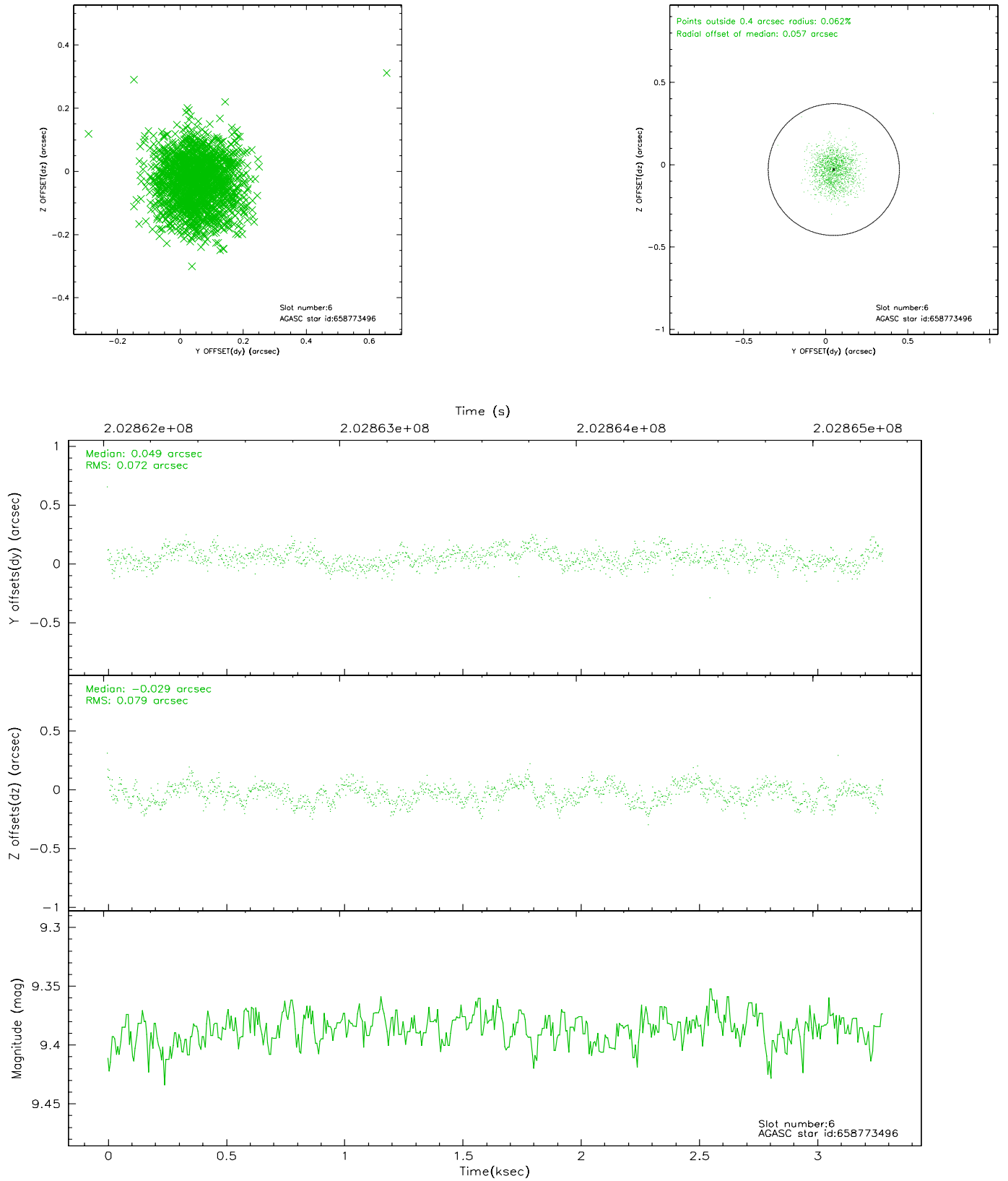
## 2.4.2 Slot 4



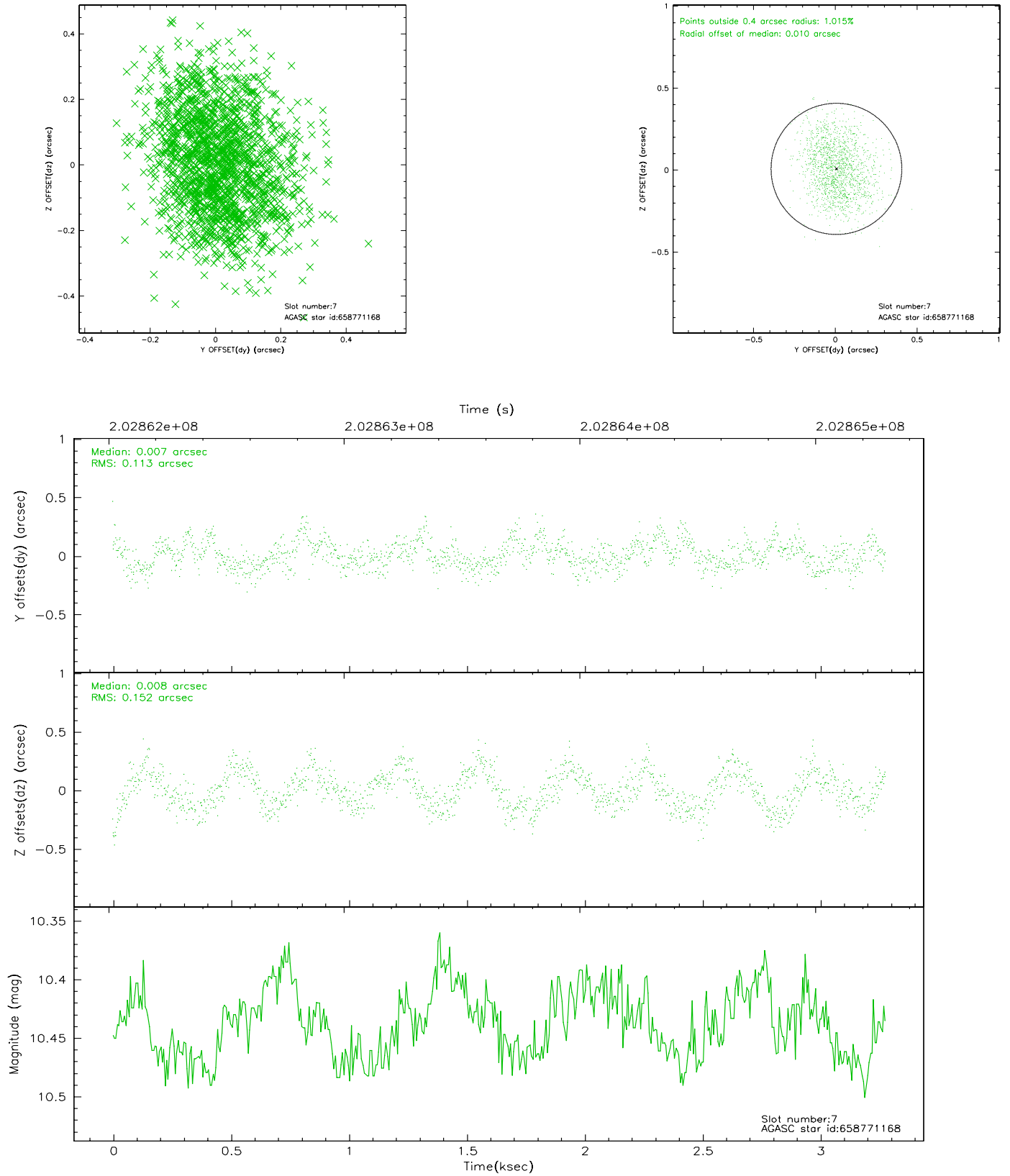
### 2.4.3 Slot 5



## 2.4.4 Slot 6

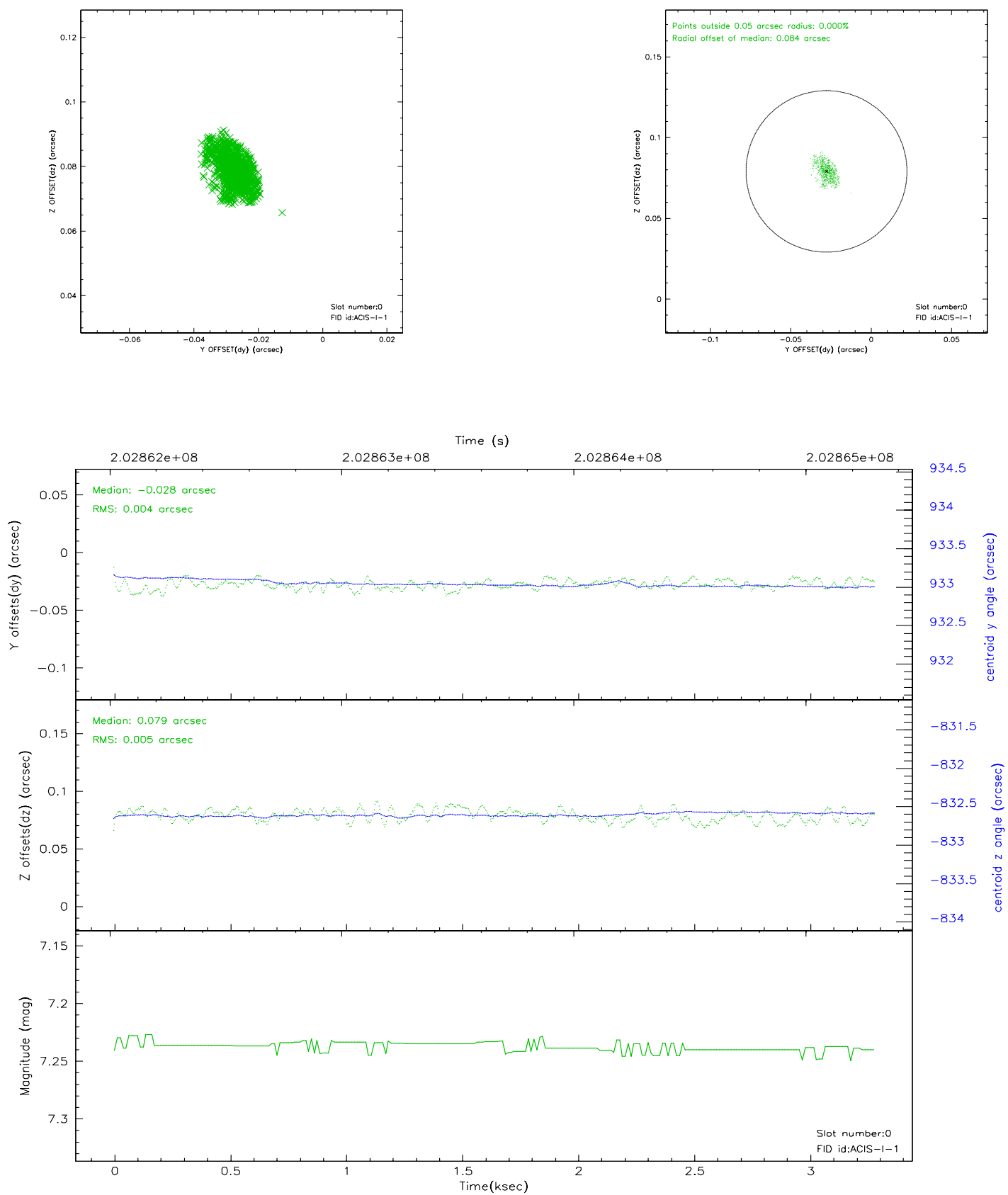


## 2.4.5 Slot 7

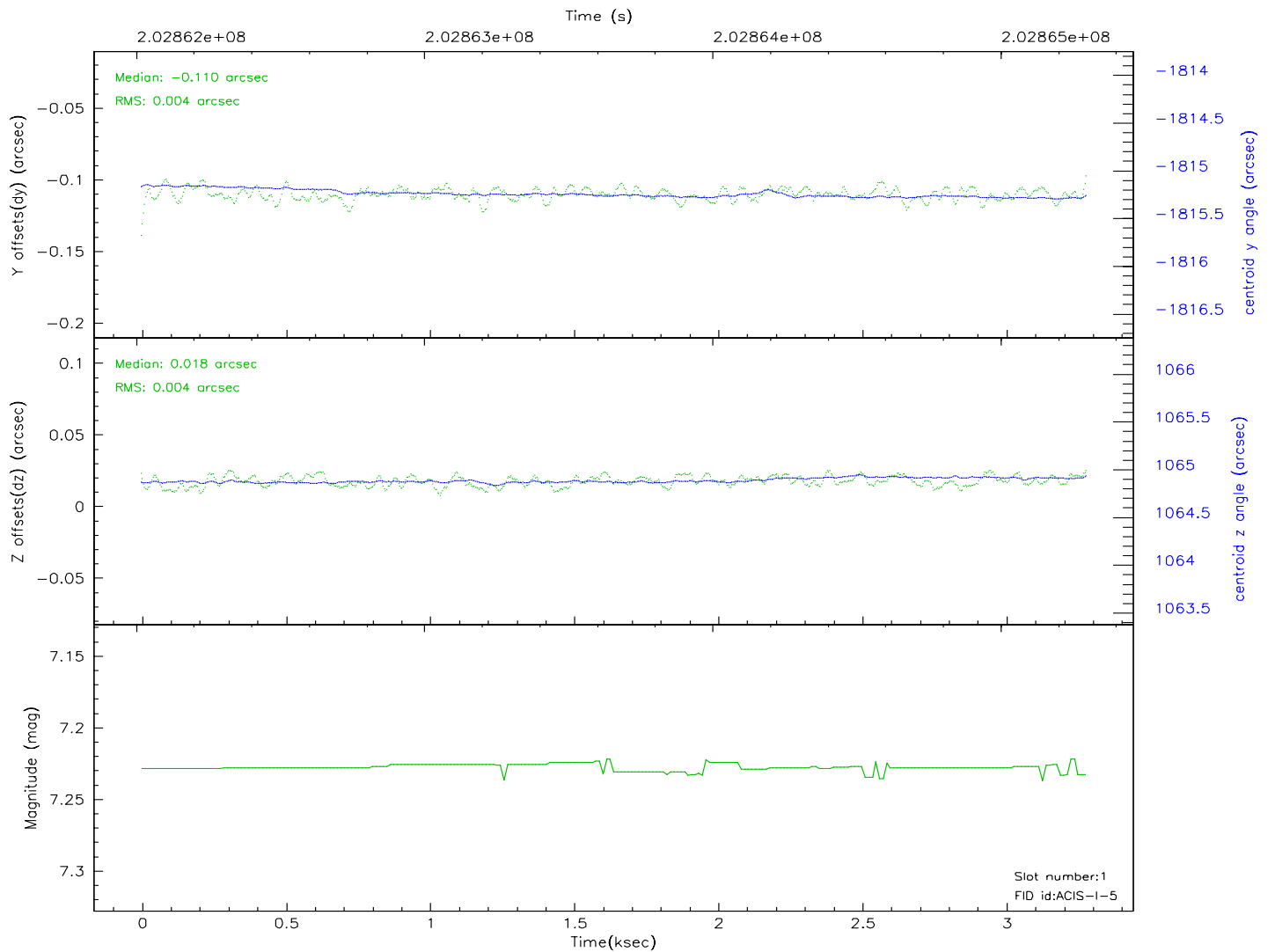
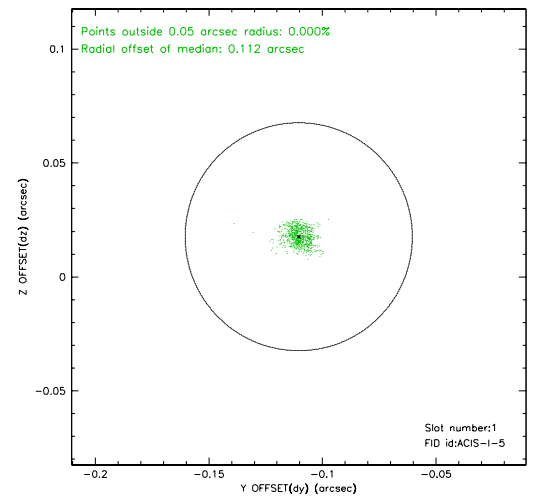
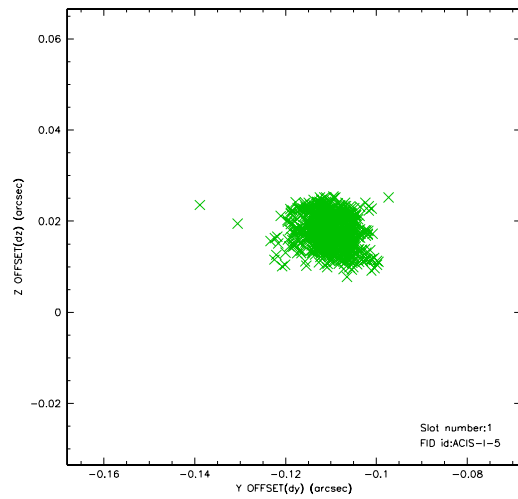


## 2.5 FID Slots

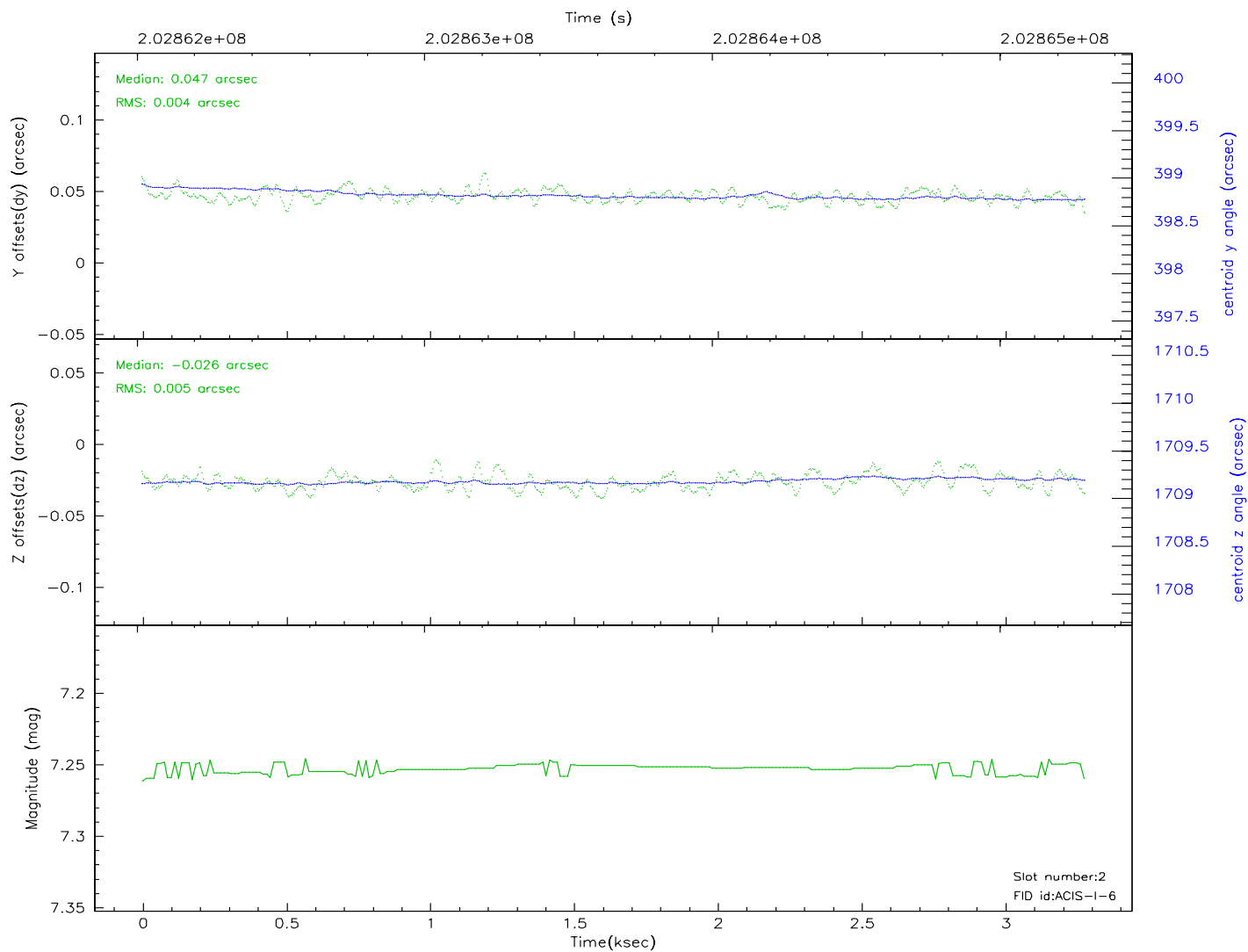
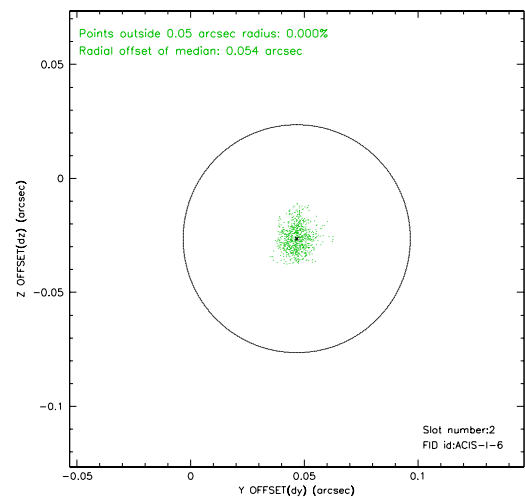
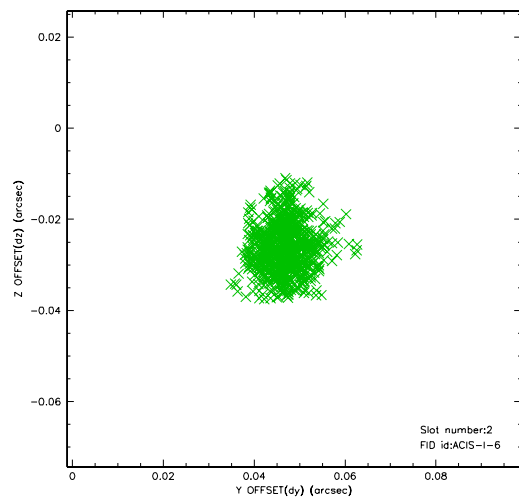
### 2.5.1 Slot 0



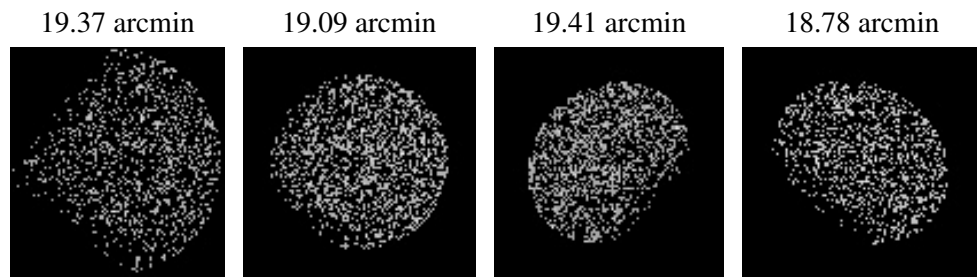
## 2.5.2 Slot 1



### 2.5.3 Slot 2



### 3 Point Sources



## A Summary

### A.1 Status

V&V Scientist	Jen Lauer
V&V Date (YYYY-MM-DD)	2006.05.01
V&V Edition	1
V&V Disposition and Status	OK
V&V Charge Time	2.924

### A.2 Comments