

V&V Reference Report

L2 ASCDS Version : 8.4.5

Observation 4489 - L2 Version 3
Chandra X-Ray Center

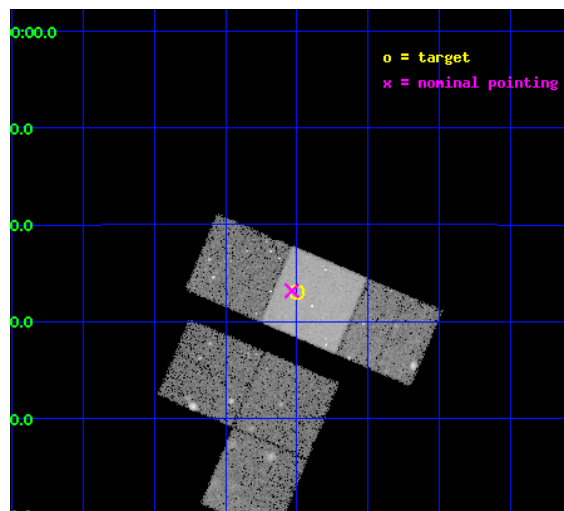
L2 Processing Date : Nov 8 2012

Contents

1	Front	2
2	OBI	3
2.1	OBI	3
2.1.1	Images	3
2.1.2	Bias	3
2.1.3	Parameters	4
2.1.4	Events	4
2.2	Compared Parameters	5
2.3	Aspect	6
2.4	Star Slots	9
2.4.1	Slot 3	9
2.4.2	Slot 4	10
2.4.3	Slot 5	11
2.4.4	Slot 6	12
2.4.5	Slot 7	13
2.5	FID Slots	14
2.5.1	Slot 0	14
2.5.2	Slot 1	15
2.5.3	Slot 2	16
A	Summary	17
A.1	Status	17
A.2	Comments	17

1 Front

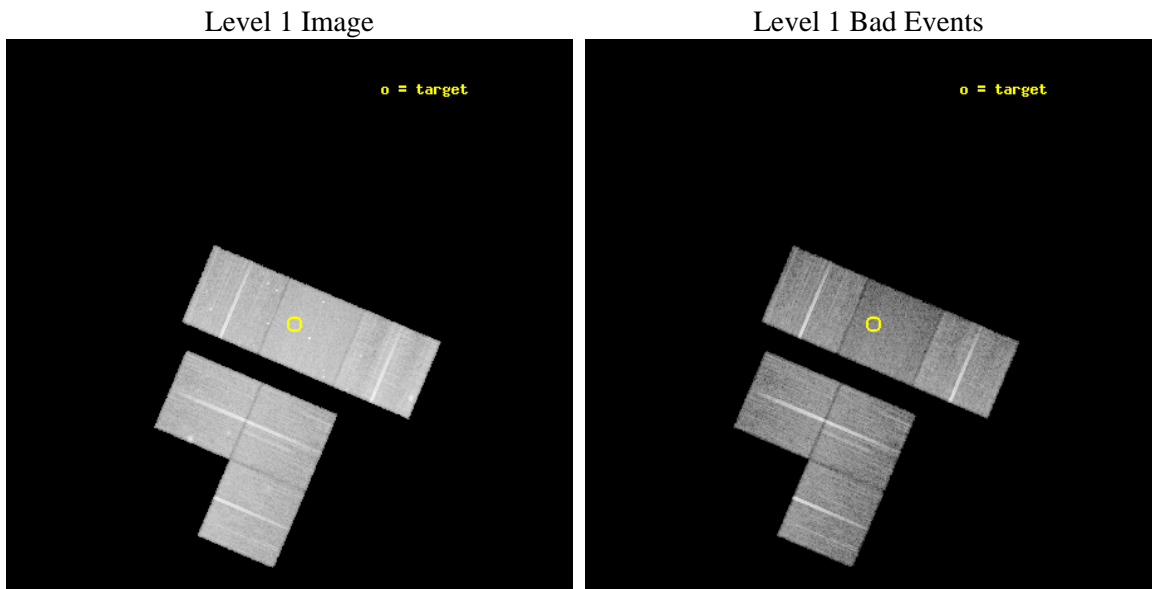
seq_num	200258	Sequence number
obs_id	4489	Observation id
title	SHOCKS AND X-RAYS IN PROTOSTELLAR JETS	Proposal title
observer	Prof. Manuel Guedel	Principal investigator
object	HH34 IRS	Source name
dtcycle	0	
cycle	P	events from which exps? Prim/Second/Both
ra_targ	83.874167	Observer's specified target RA [deg]
dec_targ	-6.449361	Observer's specified target Dec [deg]
ra_nom	83.883659018288	Nominal RA [deg]
dec_nom	-6.4472066564839	Nominal Dec [deg]
roll_nom	22.905648190476	Nominal Roll [deg]
revision	3	Processing version of data
ontime	28963.000041753	Sum of GTIs [s]
livetime	28596.253095799	Livetime [s]
ontime1	28963.041081756	Sum of GTIs [s]
ontime2	28962.83588177	Sum of GTIs [s]
ontime3	28956.435991168	Sum of GTIs [s]
ontime6	28962.95900175	Sum of GTIs [s]
ontime7	28963.000041753	Sum of GTIs [s]
ontime8	28962.876921743	Sum of GTIs [s]
l2events	139514	Number of level 2 events



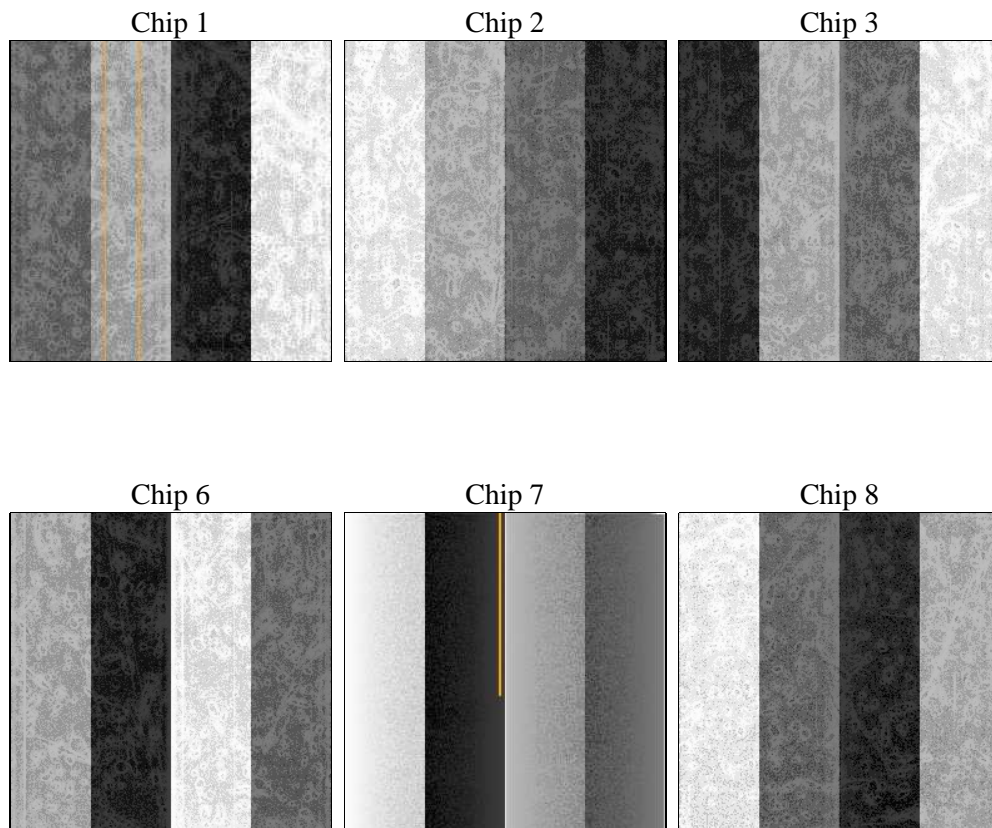
2 OBI

2.1 OBI

2.1.1 Images



2.1.2 Bias



2.1.3 Parameters

obi_num	2	Obi number	sched_exp_time	29000.000000	[s] Scheduled observation exposure time
ascdsver	8.4.5	Processing system revision	ontime	28963.000041753	Sum of GTIs [s]
caldsver	4.5.2	 	ontime1	28963.041081756	Sum of GTIs [s]
date	2012-11-08T08:30:10	Date and time of file creation	ontime2	28962.83588177	Sum of GTIs [s]
revision	3	Processing version of data	ontime3	28956.435991168	Sum of GTIs [s]
			ontime6	28962.95900175	Sum of GTIs [s]
			ontime7	28963.000041753	Sum of GTIs [s]
			ontime8	28962.876921743	Sum of GTIs [s]
			l1events	896301	Number of level 1 events

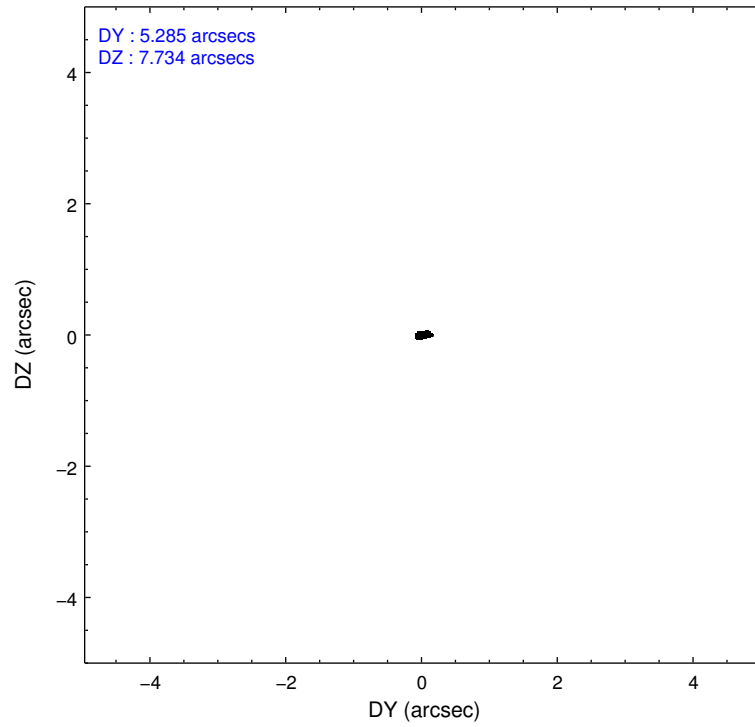
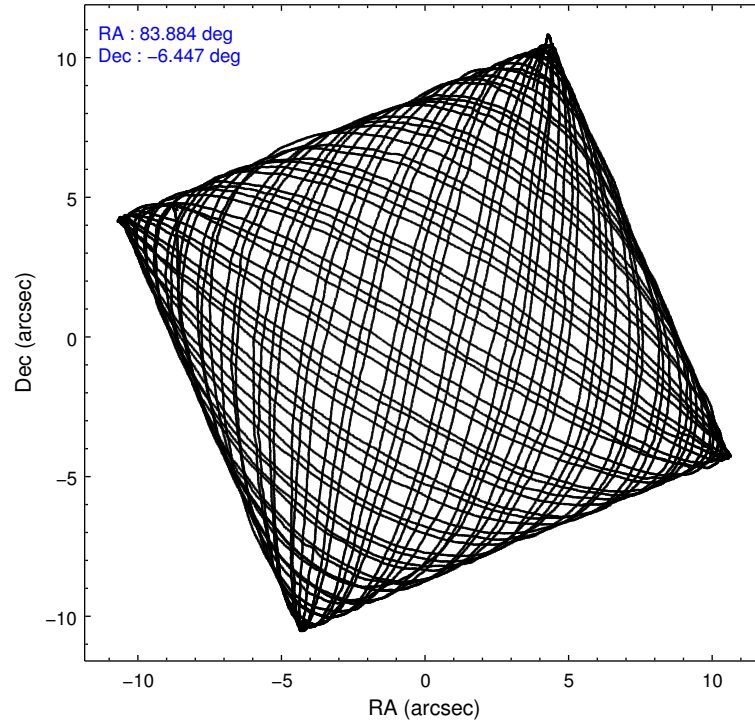
2.1.4 Events

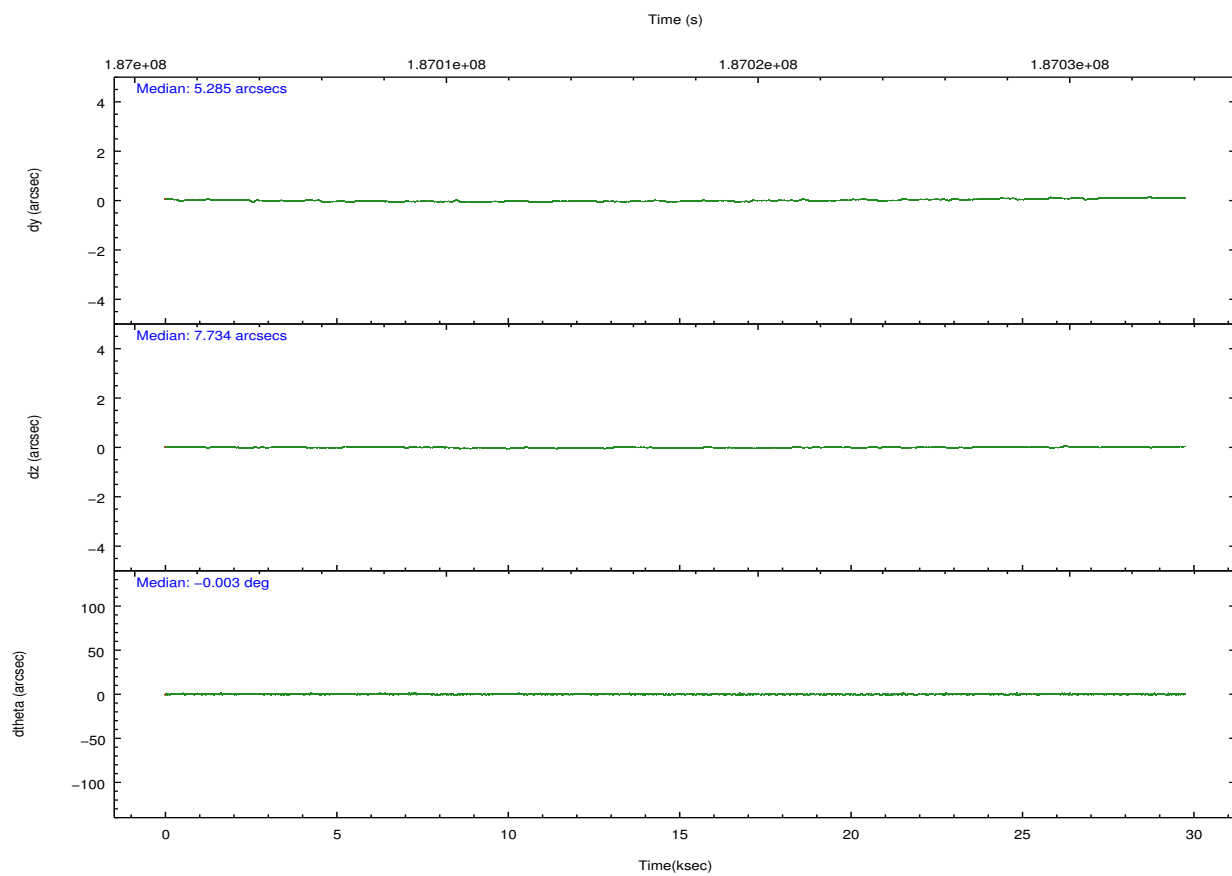
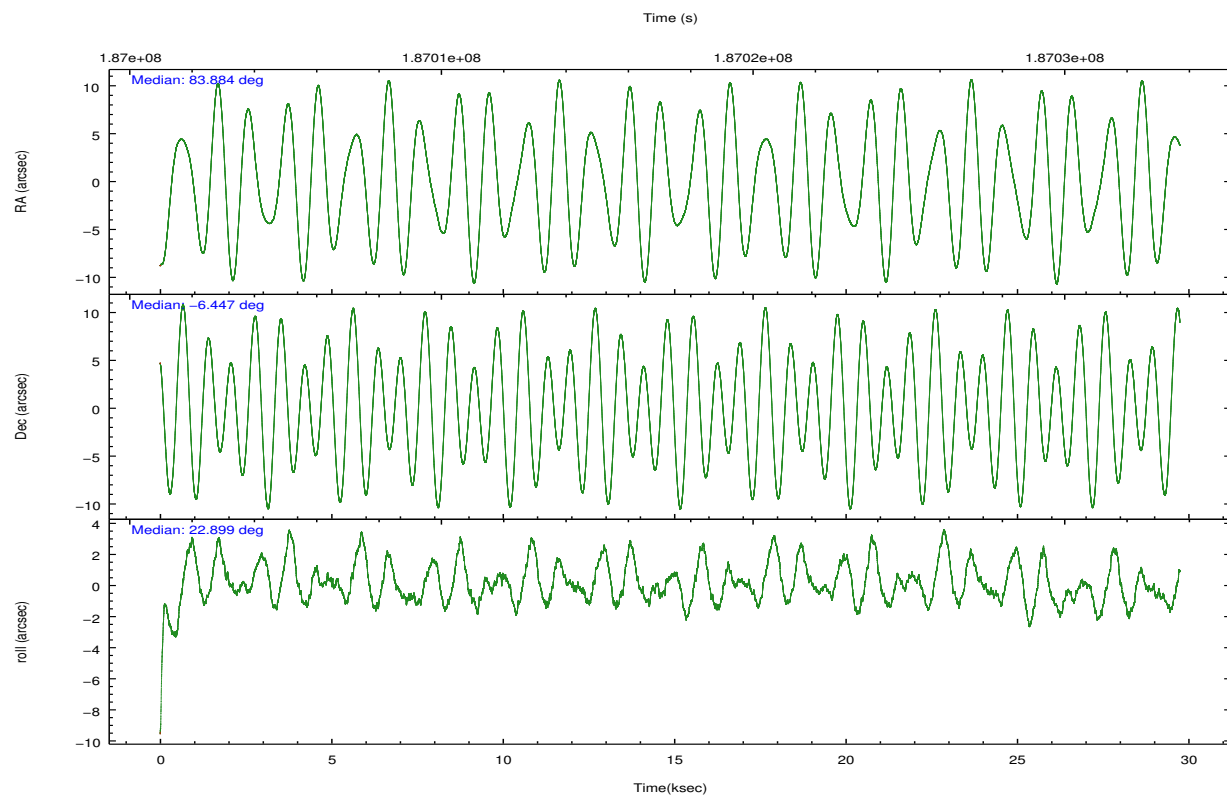
	ccd 1	ccd 2	ccd 3	ccd 6	ccd 7	ccd 8		ccd 1	ccd 2	ccd 3	ccd 6	ccd 7	ccd 8
level 1 events	136031	141792	132741	139061	155754	190922	grade 0 events	6720	7134	4622	6576	6844	16918
rejected events	118907	125458	119745	122698	84417	138373		4%	5%	3%	4%	4%	8%
rejected %	87%	88%	90%	88%	54%	72%	grade 1 events	57	76	68	74	146	141
								0%	0%	0%	0%	0%	0%
							grade 2 events	3611	3498	2790	3288	14280	10335
								2%	2%	2%	2%	9%	5%
							grade 3 events	1784	1570	1564	1641	6734	6357
								1%	1%	1%	1%	4%	3%
							grade 4 events	1739	1627	1468	1707	6673	6101
								1%	1%	1%	1%	4%	3%
							grade 5 events	5417	4590	5537	5685	16299	8129
								3%	3%	4%	4%	10%	4%
							grade 6 events	3275	2508	2554	3151	36815	12843
								2%	1%	1%	2%	23%	6%
							grade 7 events	113428	120789	114138	116939	67963	130098
								83%	85%	85%	84%	43%	68%

2.2 Compared Parameters

Parameter	Planned	Actual	Parameter	Planned	Actual
Instrument	ACIS	ACIS	Obspar format version number	7	7
Detector	ACIS-123678	ACIS-123678	Obspar file type	PREDICTED	ACTUAL
Grating	NONE	NONE	Obspar update status	NONE	UPDATED
Data mode	VFAINT	VFAINT	Number of optional ACIS chips dropped	0	0
Observation mode	POINTING	POINTING	On-chip summing requested	N	N
[deg] Pointing RA	83.867424	83.8836590182878	Subarray requested	NONE	NONE
[deg] Pointing Dec	-6.469157	-6.447206656483924	Alternating exposures requested	N	N
[deg] Pointing Roll	22.747192	22.90564819047632	[s] Primary exposure time	0.000000	3.2
[mm] SIM focus pos	-0.684267	-0.6828225247311905			
[mm] SIM defocus	0	0.001444936568705701			
[mm] SIM translation stage pos	-190.132523	-190.1425803651734			
[mm] SIM translation stage offset	0	0.01005778216563158			
[s] Observation start time (MET)	187003202.184000	187001963.37302			
Observation start date	2003-12-05T09:18:58	2003-12-05T08:59:23			
[s] Observation end time (MET)	187032202.184000	187033111.07437			
Observation end date	2003-12-05T17:22:18	2003-12-05T17:38:31			
Read mode	TIMED	TIMED			

2.3 Aspect



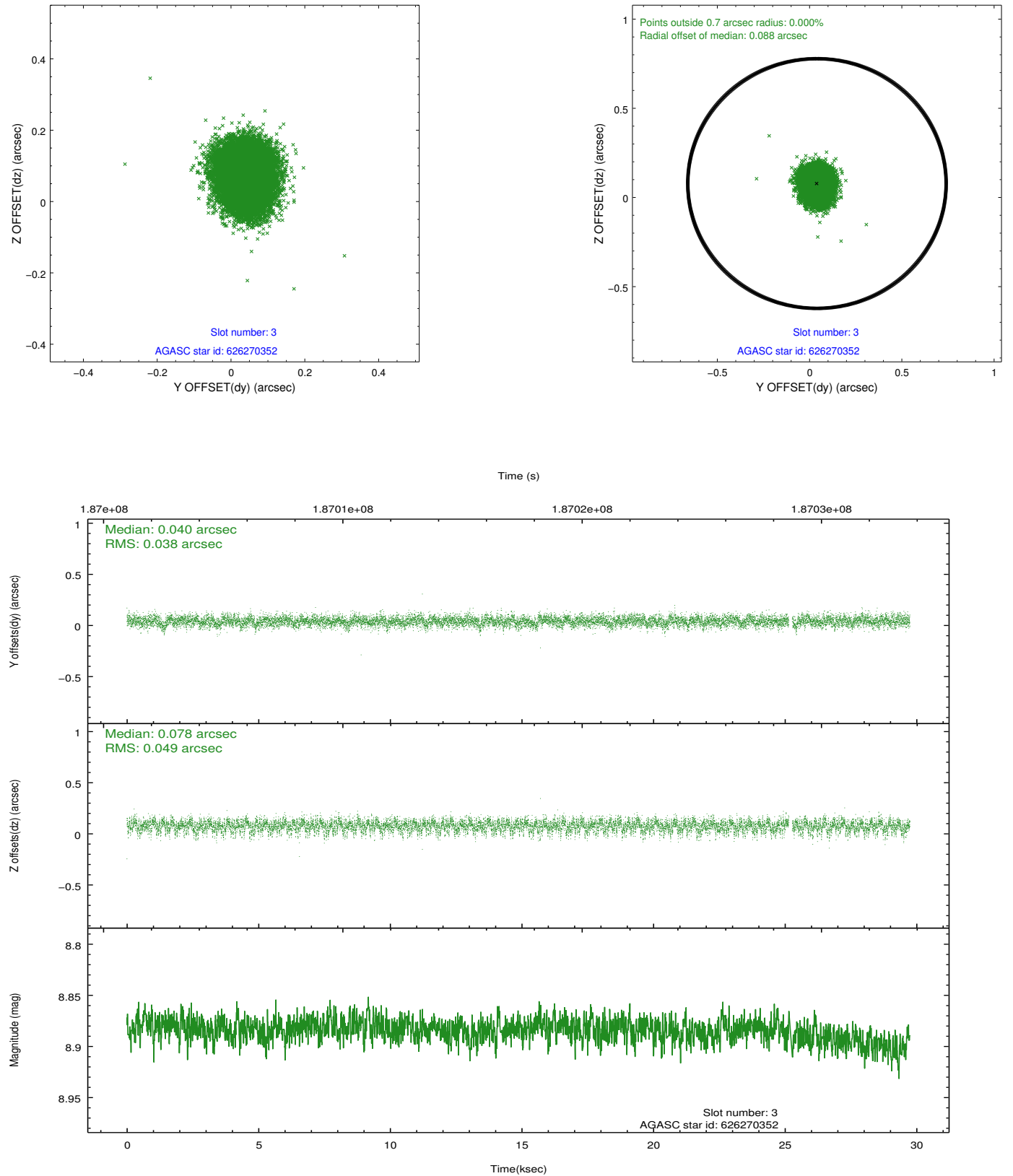


Slot Statistics

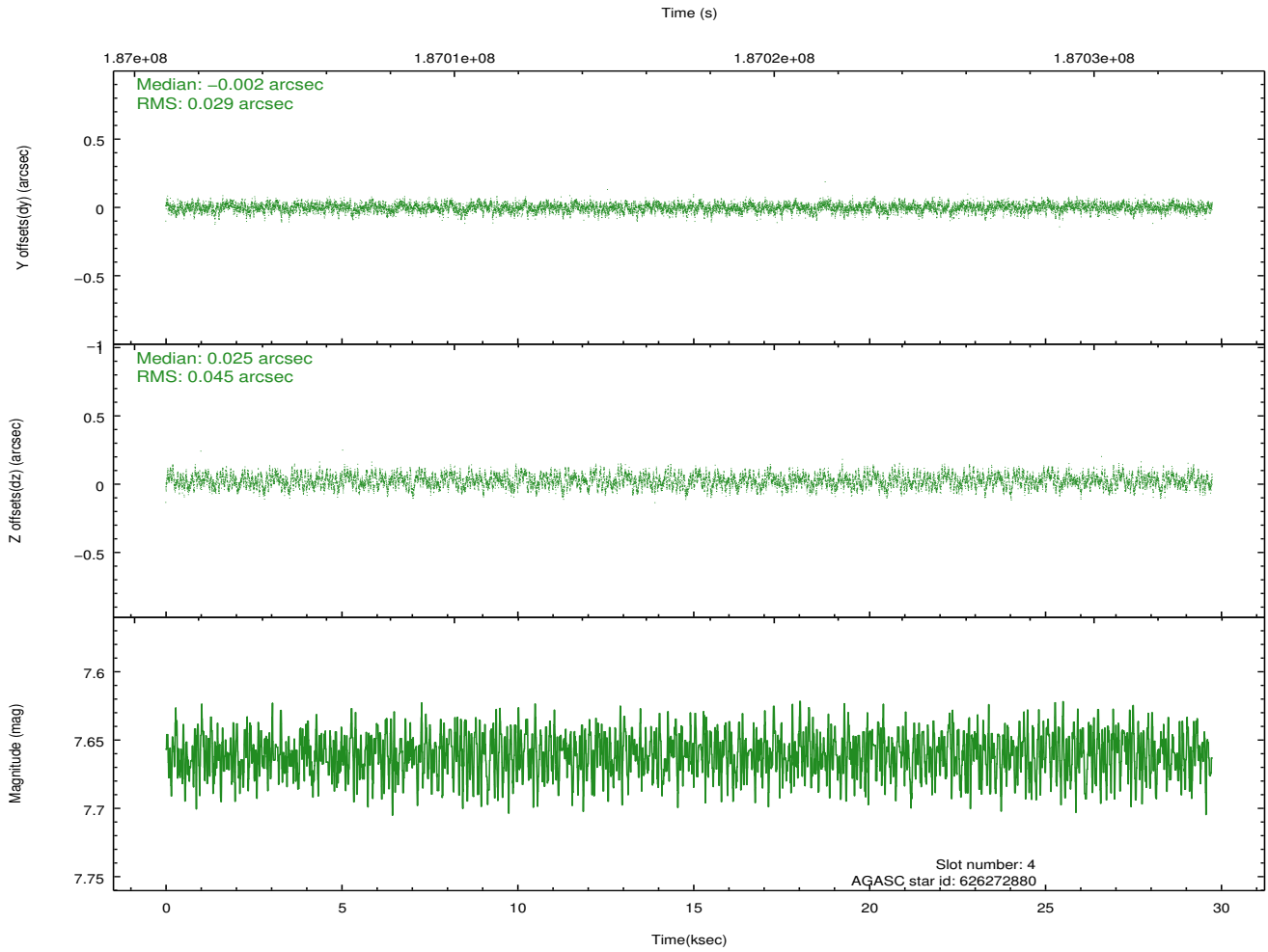
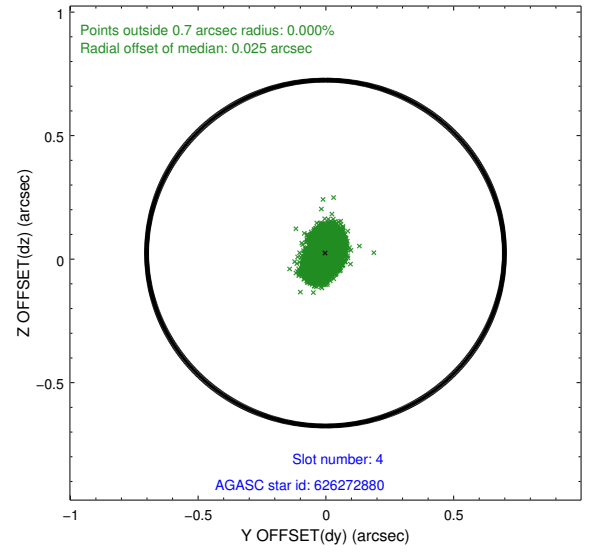
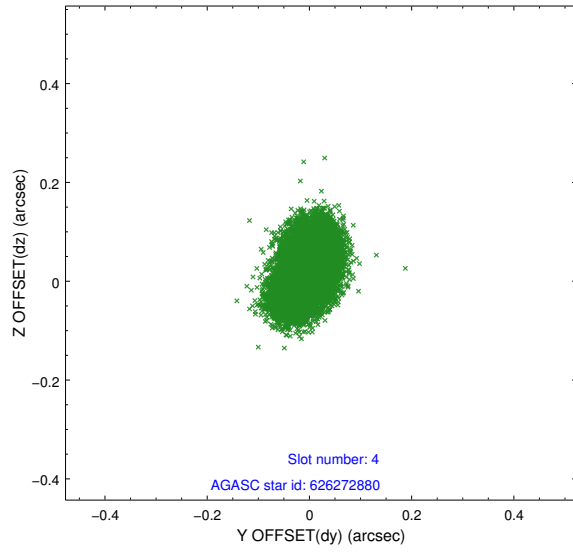
slot	status	id	mag	n_pts	med_dy	med_dz	dr1	dr2	ra	dec	mean_y	mean_z
0	FID	ACIS-S-2	7.11	7255	-0.037	-0.046	0.007	0.011	0.000000	0.000000	-758.06	-1728.90
1	FID	ACIS-S-4	7.21	7255	0.091	0.030	0.005	0.010	0.000000	0.000000	2155.34	179.54
2	FID	ACIS-S-5	7.23	7255	-0.086	0.025	0.007	0.011	0.000000	0.000000	-1810.83	173.35
3	GUIDE	626270352	8.88	14440	0.040	0.078	0.065	0.107	83.522796	-6.838095	-1649.46	-749.08
4	GUIDE	626272880	7.66	14507	-0.002	0.025	0.057	0.094	83.815609	-6.032748	436.35	1520.63
5	GUIDE	626272760	6.62	14510	-0.128	-0.051	0.055	0.097	84.363987	-5.938389	2378.29	1074.22
6	GUIDE	626398472	8.79	14503	0.071	0.017	0.076	0.121	84.461806	-6.722087	1607.89	-1662.34
7	GUIDE	626272928	8.93	7254	0.030	-0.108	0.121	0.263	83.808364	-5.826744	699.42	2214.32

2.4 Star Slots

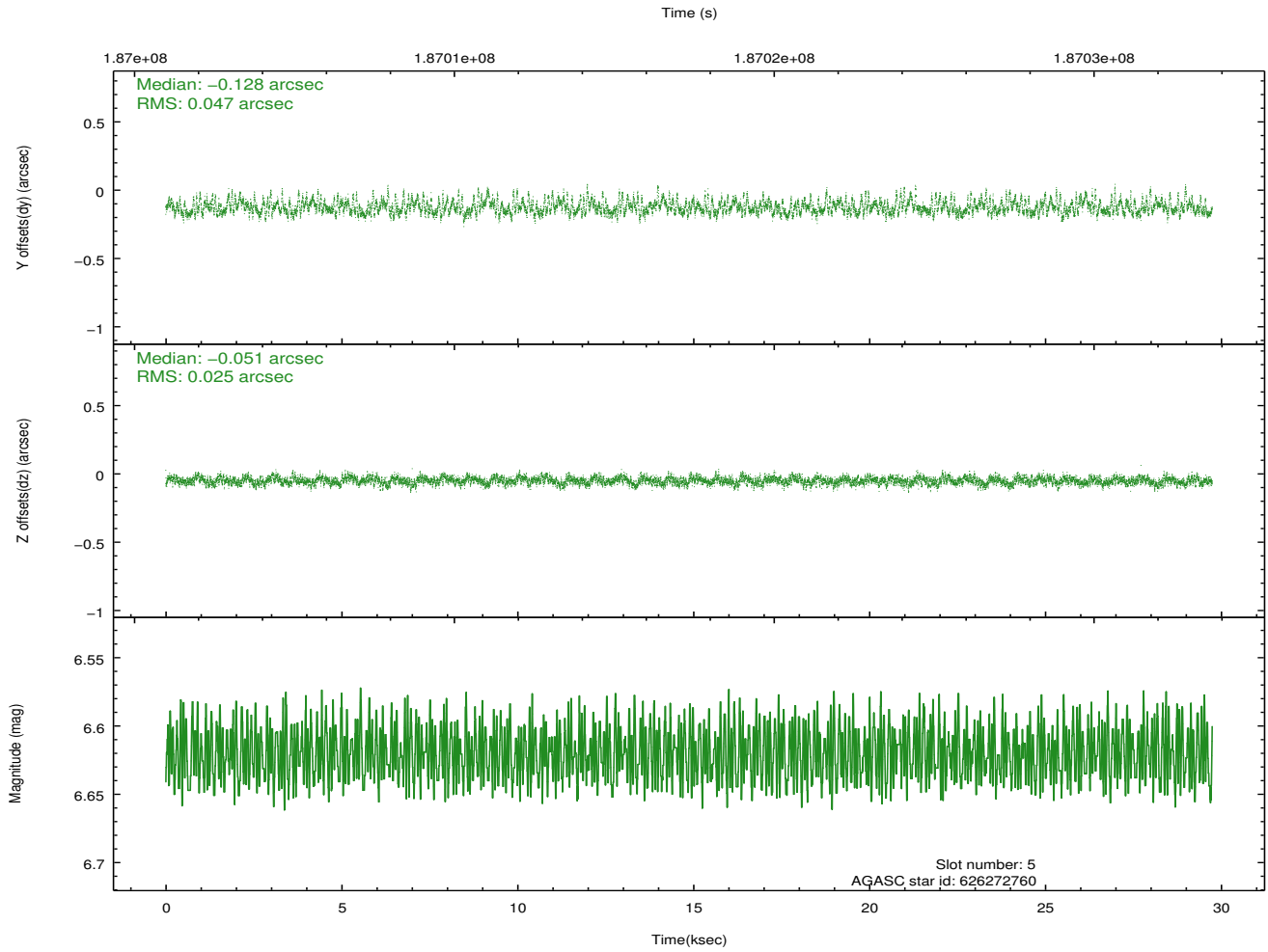
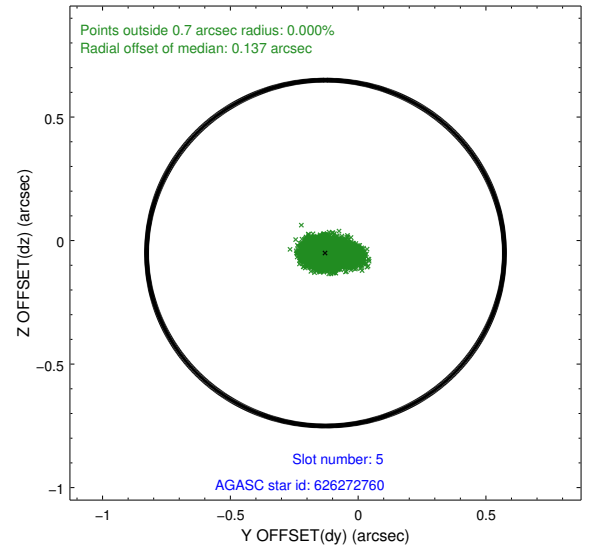
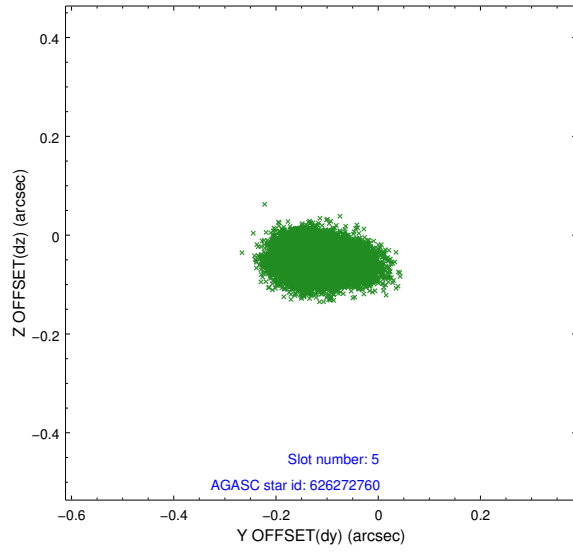
2.4.1 Slot 3



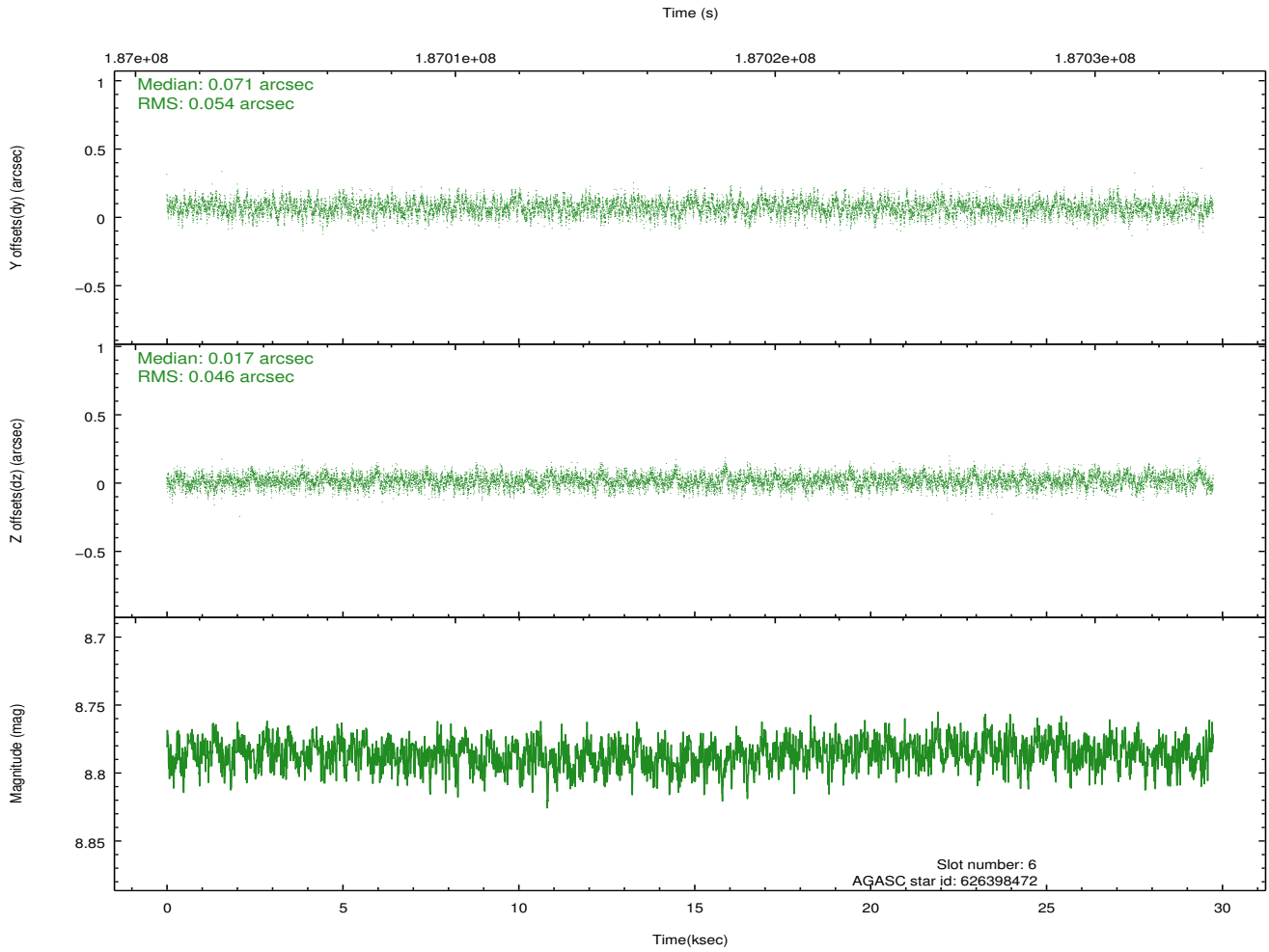
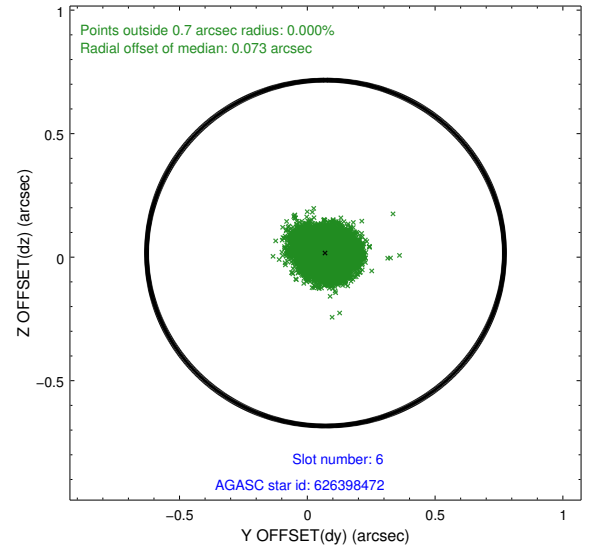
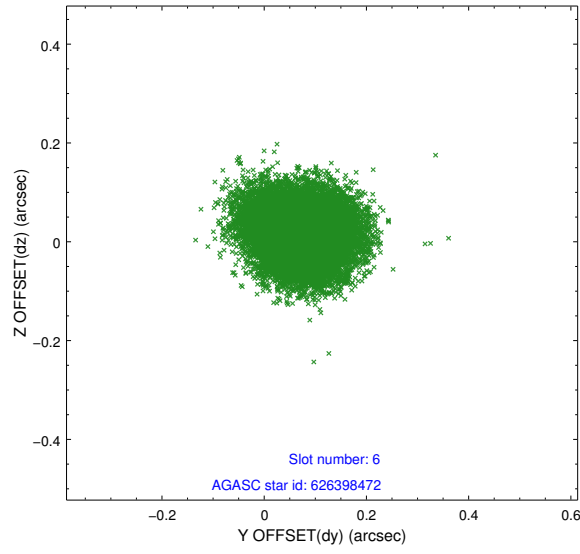
2.4.2 Slot 4



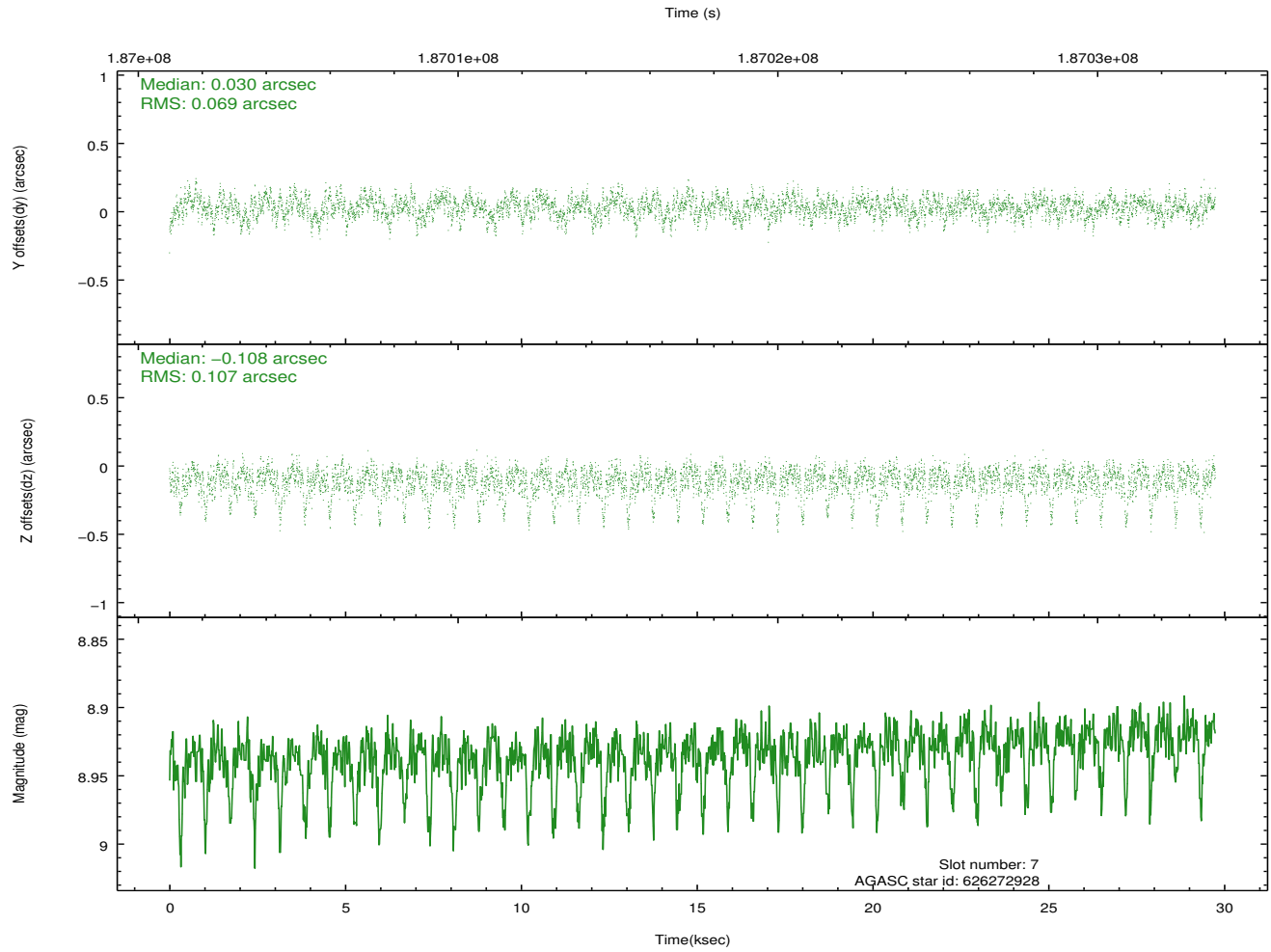
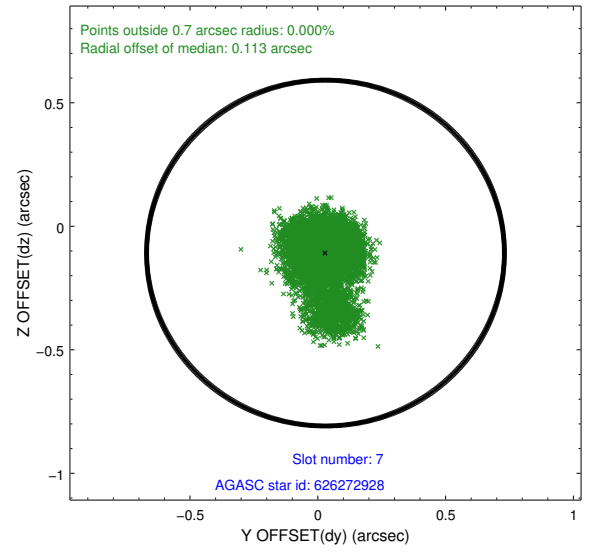
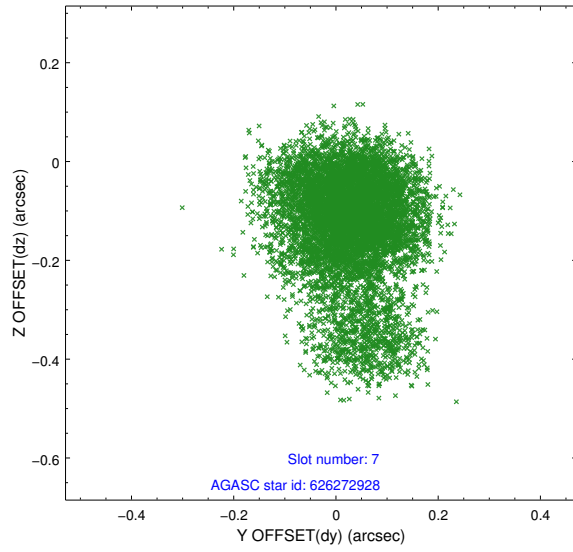
2.4.3 Slot 5



2.4.4 Slot 6

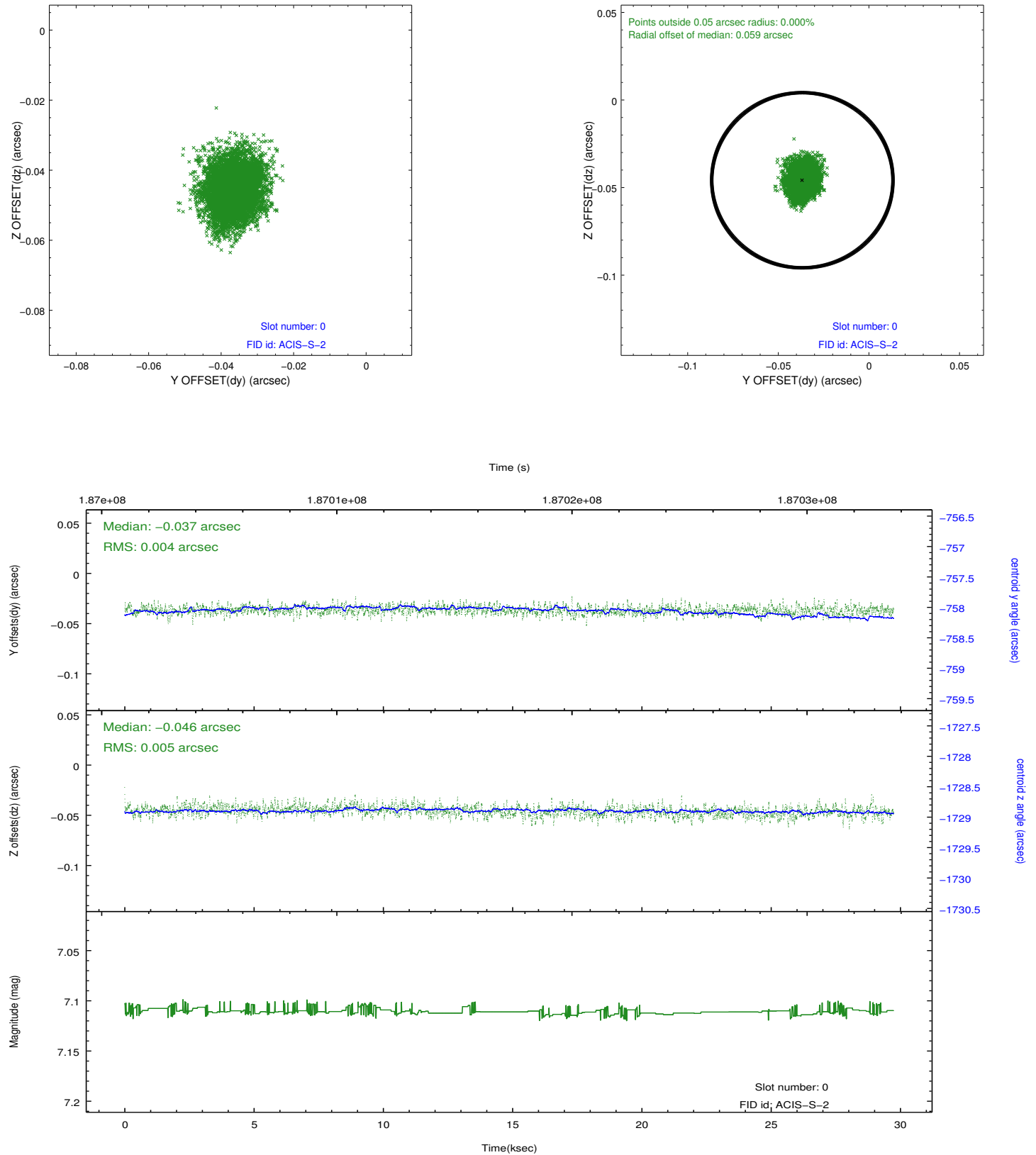


2.4.5 Slot 7

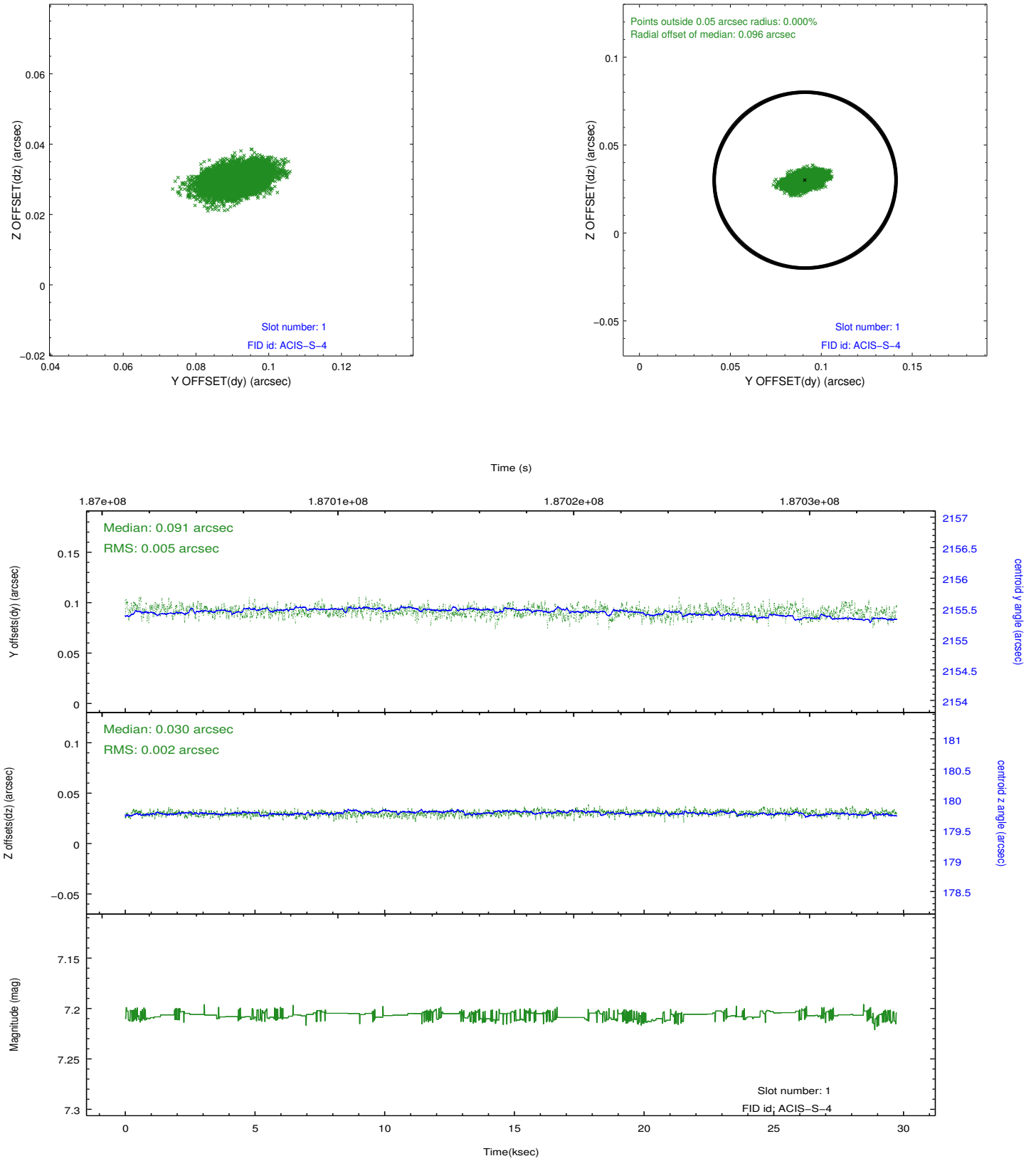


2.5 FID Slots

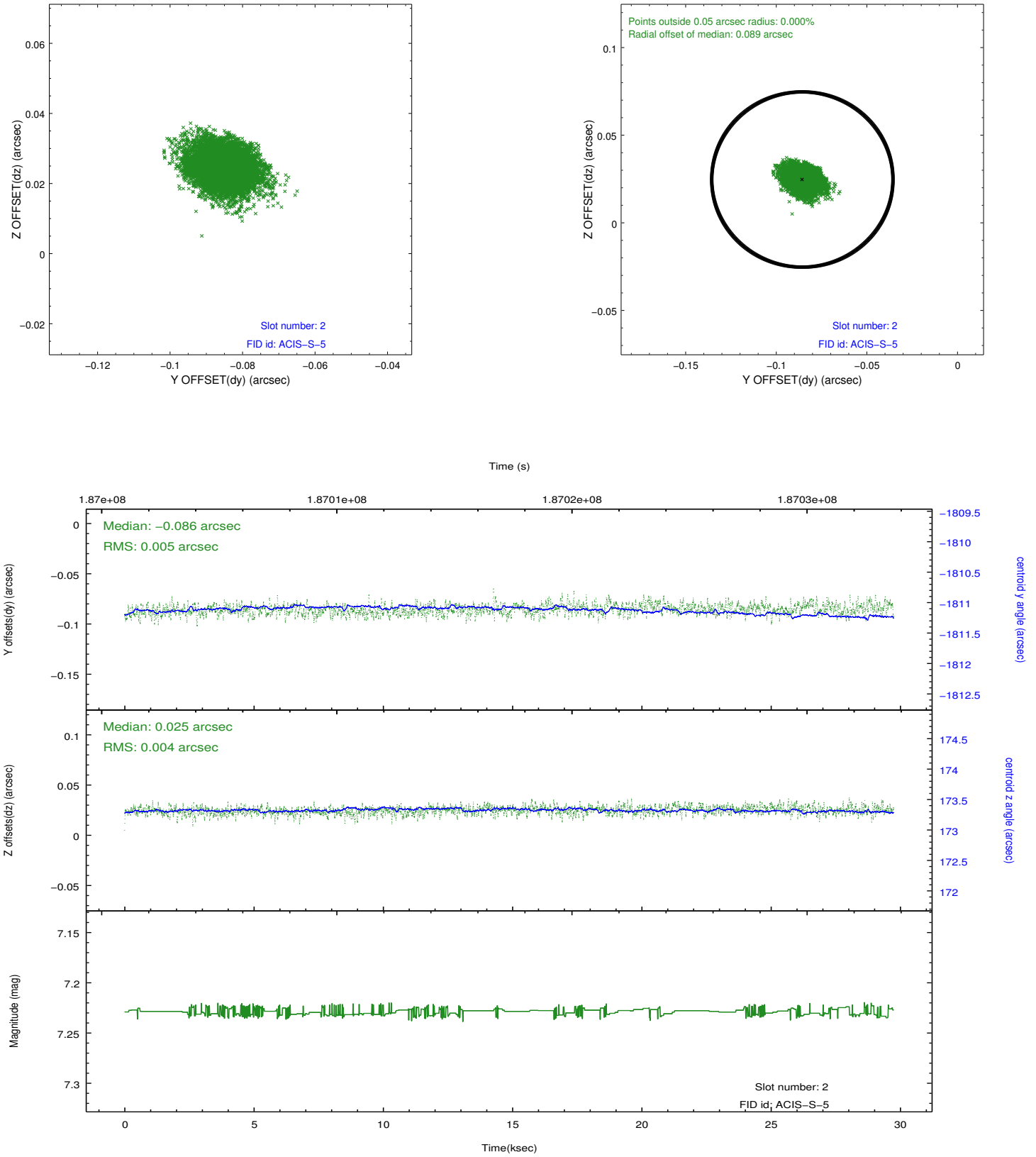
2.5.1 Slot 0



2.5.2 Slot 1



2.5.3 Slot 2



A Summary

A.1 Status

V&V Scientist	Jen Lauer
V&V Date (YYYY-MM-DD)	2012.12.02
V&V Edition	1
V&V Disposition and Status	OK
V&V Charge Time	28.956

A.2 Comments