

# V&V Reference Report

## L2 ASCDS Version : 7.6.8

Observation 4489 - L2 Version 001  
Chandra X-Ray Center

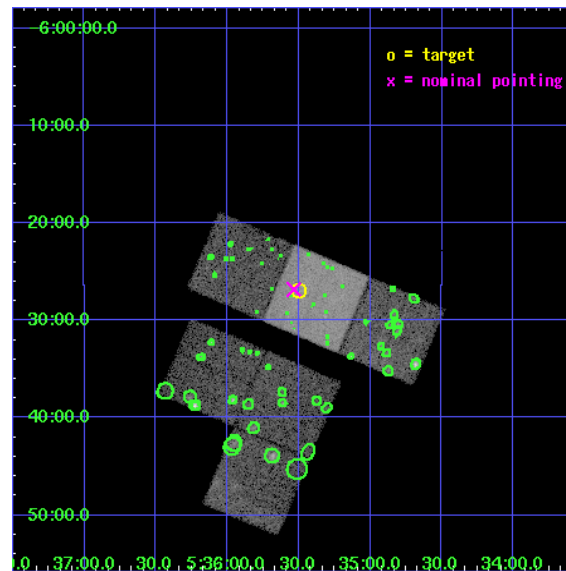
L2 Processing Date : Jun 23 2006

## Contents

<b>1</b>	<b>Front</b>	<b>2</b>
<b>2</b>	<b>OBI</b>	<b>3</b>
2.1	OBI . . . . .	3
2.1.1	Images . . . . .	3
2.1.2	Bias . . . . .	3
2.1.3	Parameters . . . . .	4
2.1.4	Events . . . . .	4
2.2	Compared Parameters . . . . .	5
2.3	Aspect . . . . .	6
2.4	Star Slots . . . . .	9
2.4.1	Slot 3 . . . . .	9
2.4.2	Slot 4 . . . . .	10
2.4.3	Slot 5 . . . . .	11
2.4.4	Slot 6 . . . . .	12
2.4.5	Slot 7 . . . . .	13
2.5	FID Slots . . . . .	14
2.5.1	Slot 0 . . . . .	14
2.5.2	Slot 1 . . . . .	15
2.5.3	Slot 2 . . . . .	16
<b>3</b>	<b>Point Sources</b>	<b>17</b>
<b>A</b>	<b>Summary</b>	<b>18</b>
A.1	Status . . . . .	18
A.2	Comments . . . . .	18

# 1 Front

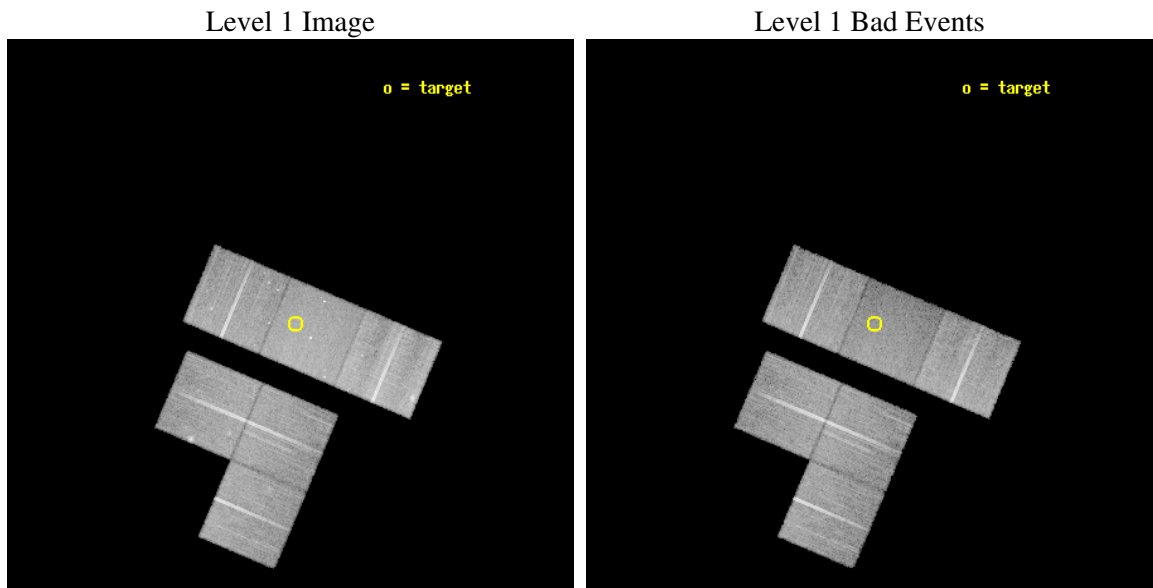
seq_num	200258
obs_id	4489
title	SHOCKS AND X-RAYS IN PROTOSTELLAR JETS
observer	Dr. Manuel Guedel
object	HH34 IRS
dtcycle	0
cycle	P
ra_targ	83.874167
dec_targ	-6.449361
ra_nom	83.883633240897
dec_nom	-6.4472173996849
roll_nom	22.905645289253
revision	2
ontime	28963.199892104
livetime	28596.450415525
ontime1	28963.199892104
ontime2	28963.199892104
ontime3	28956.717921525
ontime6	28963.199892104
ontime7	28963.199892104
ontime8	28963.199892104
l2events	135197



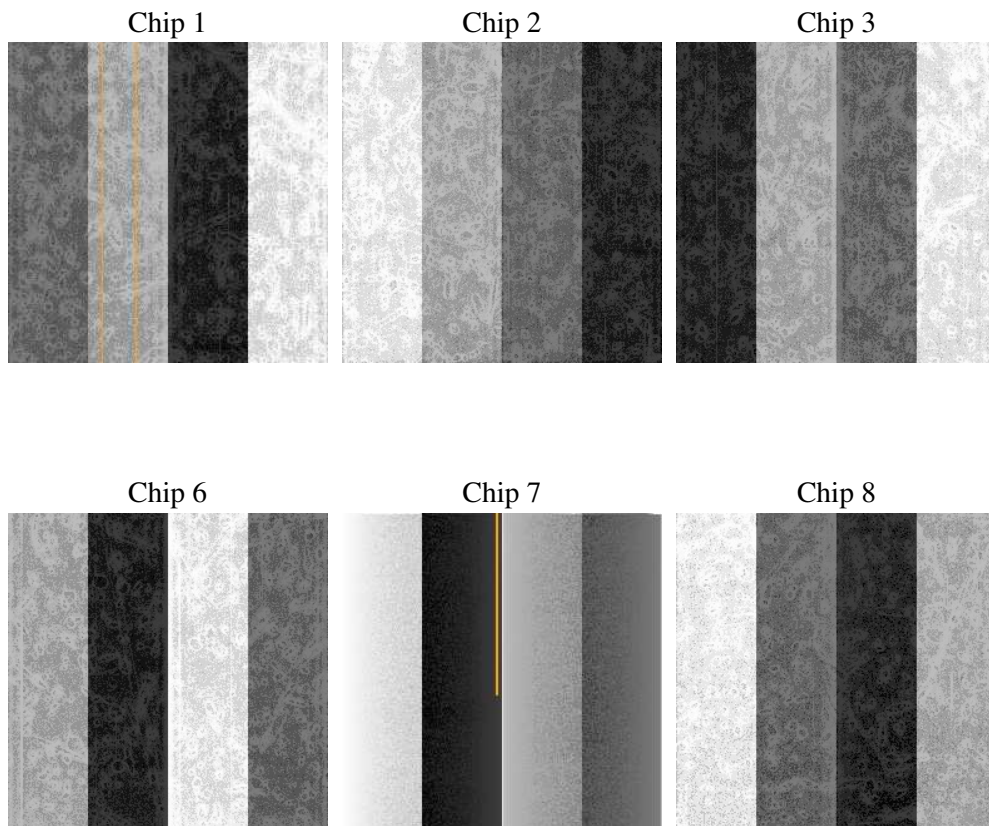
## 2 OBI

### 2.1 OBI

#### 2.1.1 Images



#### 2.1.2 Bias



### 2.1.3 Parameters

obi_num	2
ascdsver	7.6.8
caldsver	3.2.2
date	2006-06-23T11:59:04
revision	2

sched_exp_time	29000.000000
ontime	28968.161466181
ontime1	28968.161466181
ontime2	28968.161466181
ontime3	28961.679495603
ontime6	28968.161466181
ontime7	28968.161466181
ontime8	28968.161466181
l1events	896301

### 2.1.4 Events

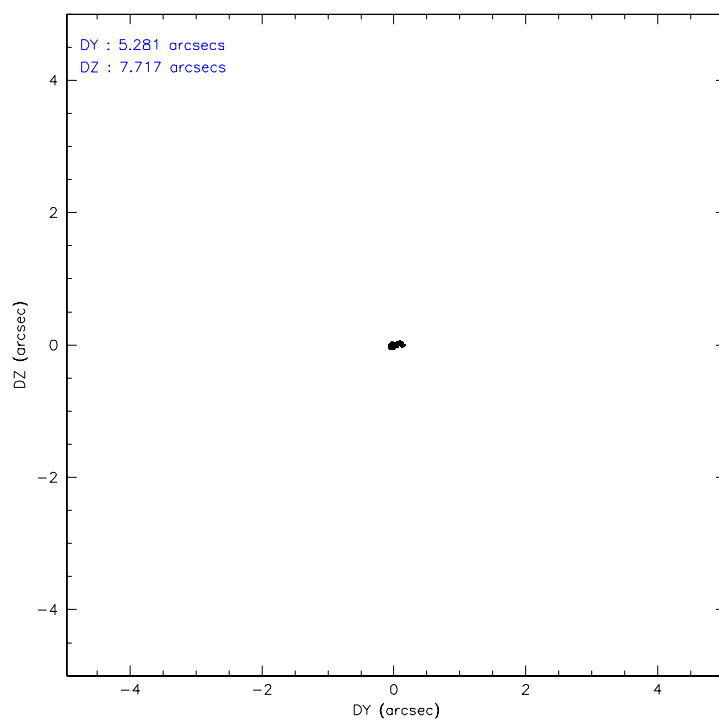
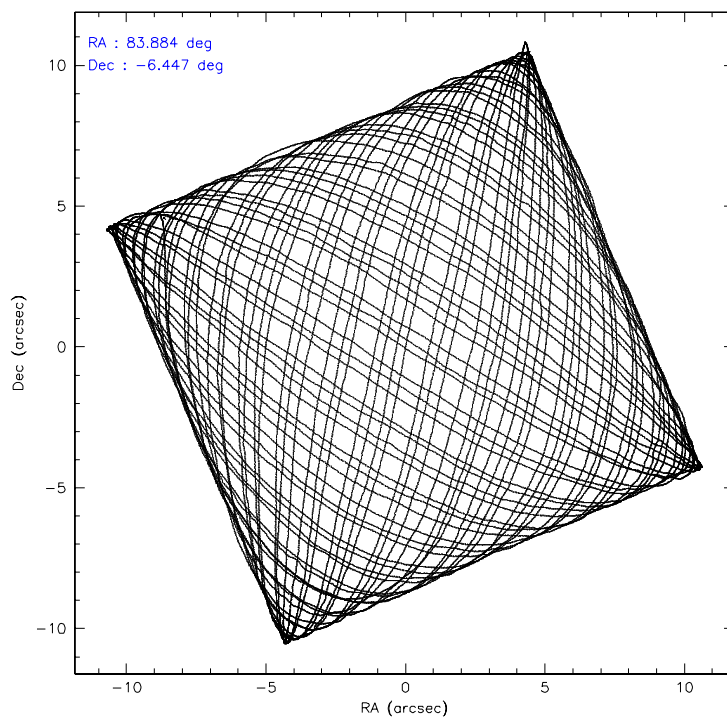
	ccd 1	ccd 2	ccd 3	ccd 6	ccd 7	ccd 8
level 1 events	136031	141792	132741	139061	155754	190922
rejected events	118904	125456	119744	122694	89876	138372
rejected %	87%	88%	90%	88%	57%	72%

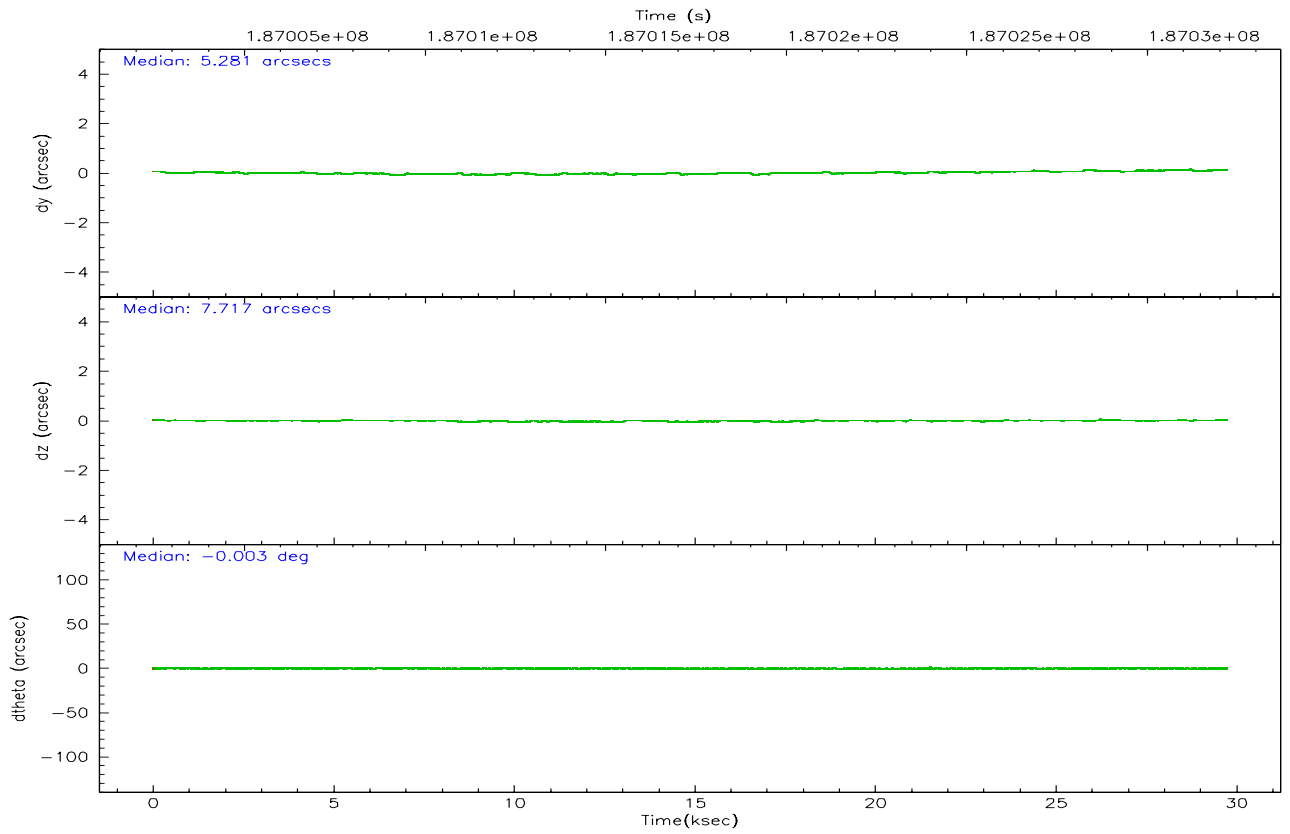
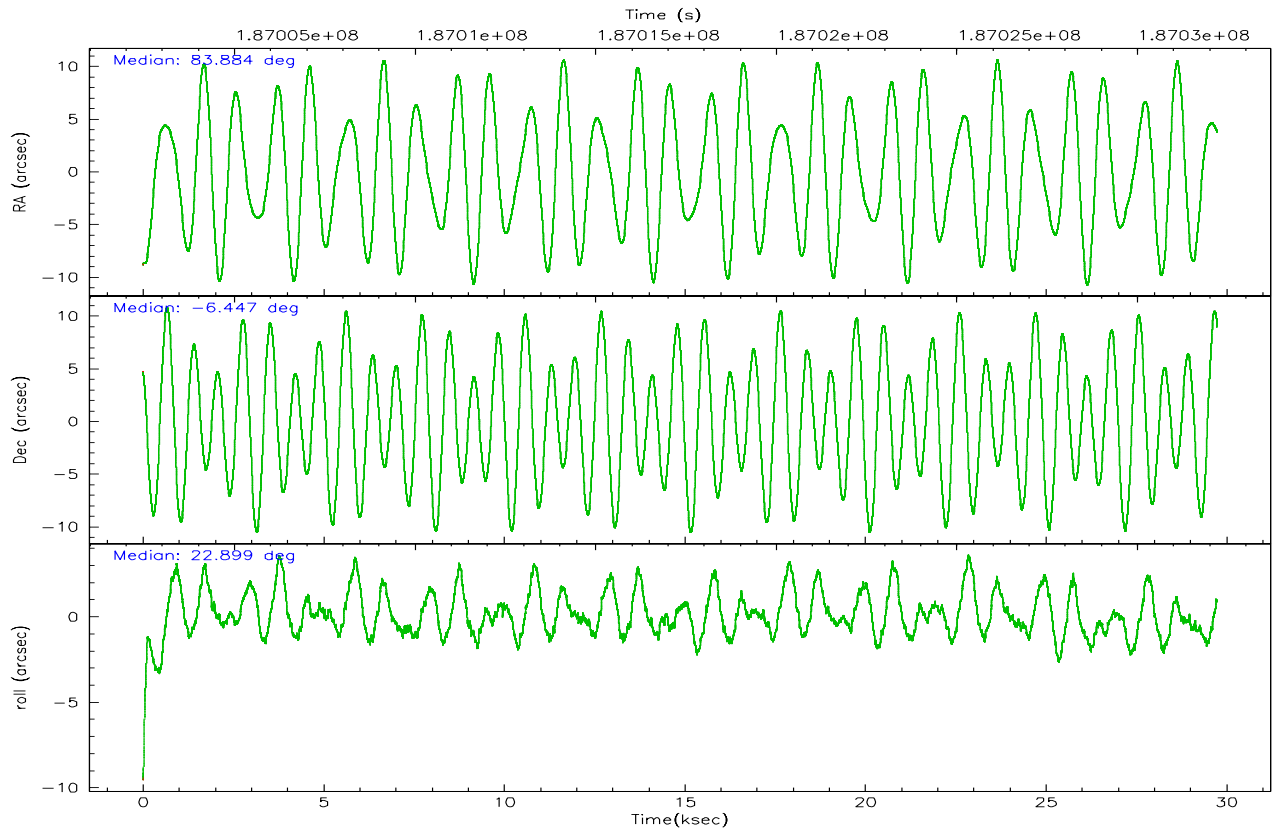
	ccd 1	ccd 2	ccd 3	ccd 6	ccd 7	ccd 8
grade 0 events	6714	7133	4622	6574	4312	16914
	4%	5%	3%	4%	2%	8%
grade 1 events	57	76	68	74	82	141
	0%	0%	0%	0%	0%	0%
grade 2 events	3617	3499	2790	3290	16253	10338
	2%	2%	2%	2%	10%	5%
grade 3 events	1784	1570	1563	1639	3859	6356
	1%	1%	1%	1%	2%	3%
grade 4 events	1739	1627	1467	1706	3750	6100
	1%	1%	1%	1%	2%	3%
grade 5 events	5413	4588	5535	5677	11238	8125
	3%	3%	4%	4%	7%	4%
grade 6 events	3276	2509	2557	3158	37709	12843
	2%	1%	1%	2%	24%	6%
grade 7 events	113431	120790	114139	116943	78551	130105
	83%	85%	85%	84%	50%	68%

## 2.2 Compared Parameters

Parameter	Planned	Actual	Parameter	Planned	Actual
Instrument	ACIS	ACIS	Obspar format version number	6	6
Detector	ACIS-123678	ACIS-123678	Obspar file type	PREDICTED	ACTUAL
Grating	NONE	NONE	Obspar update status	NONE	UPDATED
Data mode	VFAINT	VFAINT	On-chip summing requested	N	N
Observation mode	POINTING	POINTING	Subarray requested	NONE	NONE
Pointing RA	83.867424	83.88363324089731	Alternating exposures requested	N	N
Pointing Dec	-6.469157	-6.44721739968486	Primary exposure time	0.000000	3.2
Pointing Roll	22.747192	22.90564528925263			
SIM focus pos (mm)	-0.684267	-0.6828225247311905			
SIM defocus (mm)	0	0.001444936568705701			
SIM translation stage pos (mm)	-190.132523	-190.1425803651734			
SIM translation stage offset (mm)	0	0.01005778216563158			
Observation start time	187003202.184000	187001963.37302			
Observation start date	2003-12-05T09:18:58	2003-12-05T08:59:23			
Observation end time	187032202.184000	187033111.07437			
Observation end date	2003-12-05T17:22:18	2003-12-05T17:38:31			
Read mode	TIMED	TIMED			

## 2.3 Aspect





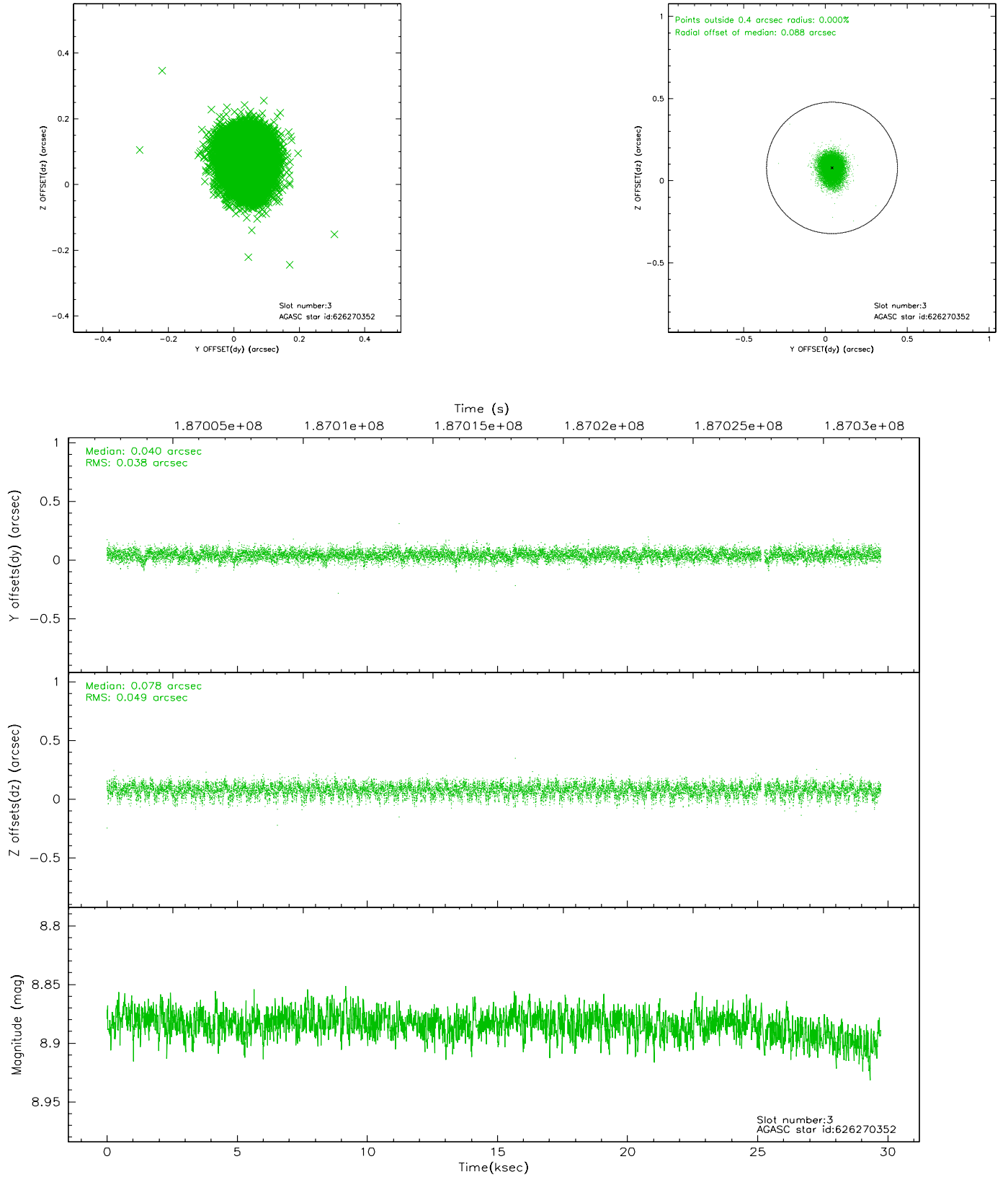
### Slot Statistics

slot	status	id	mag	n_pts	med_dy	med_dz	dr1	dr2	ra	dec	mean_y	mean_z
0	FID	ACIS-S-2	7.11	7255	-0.025	-0.023	0.007	0.011	0.000000	0.000000	-758.05	-1728.86
1	FID	ACIS-S-4	7.21	7255	0.049	0.018	0.005	0.008	0.000000	0.000000	2155.30	179.55
2	FID	ACIS-S-5	7.23	7255	-0.055	0.013	0.006	0.010	0.000000	0.000000	-1810.80	173.35
3	GUIDE	626270352	8.88	14440	0.040	0.078	0.065	0.107	83.522796	-6.838095	-1649.46	-749.08
4	GUIDE	626272880	7.66	14507	-0.002	0.025	0.057	0.094	83.815609	-6.032748	436.35	1520.63
5	GUIDE	626272760	6.62	14510	-0.128	-0.051	0.055	0.097	84.363987	-5.938389	2378.29	1074.22
6	GUIDE	626398472	8.79	14503	0.071	0.017	0.076	0.121	84.461806	-6.722087	1607.89	-1662.34
7	GUIDE	626272928	8.93	7254	0.030	-0.108	0.121	0.263	83.808364	-5.826744	699.42	2214.32

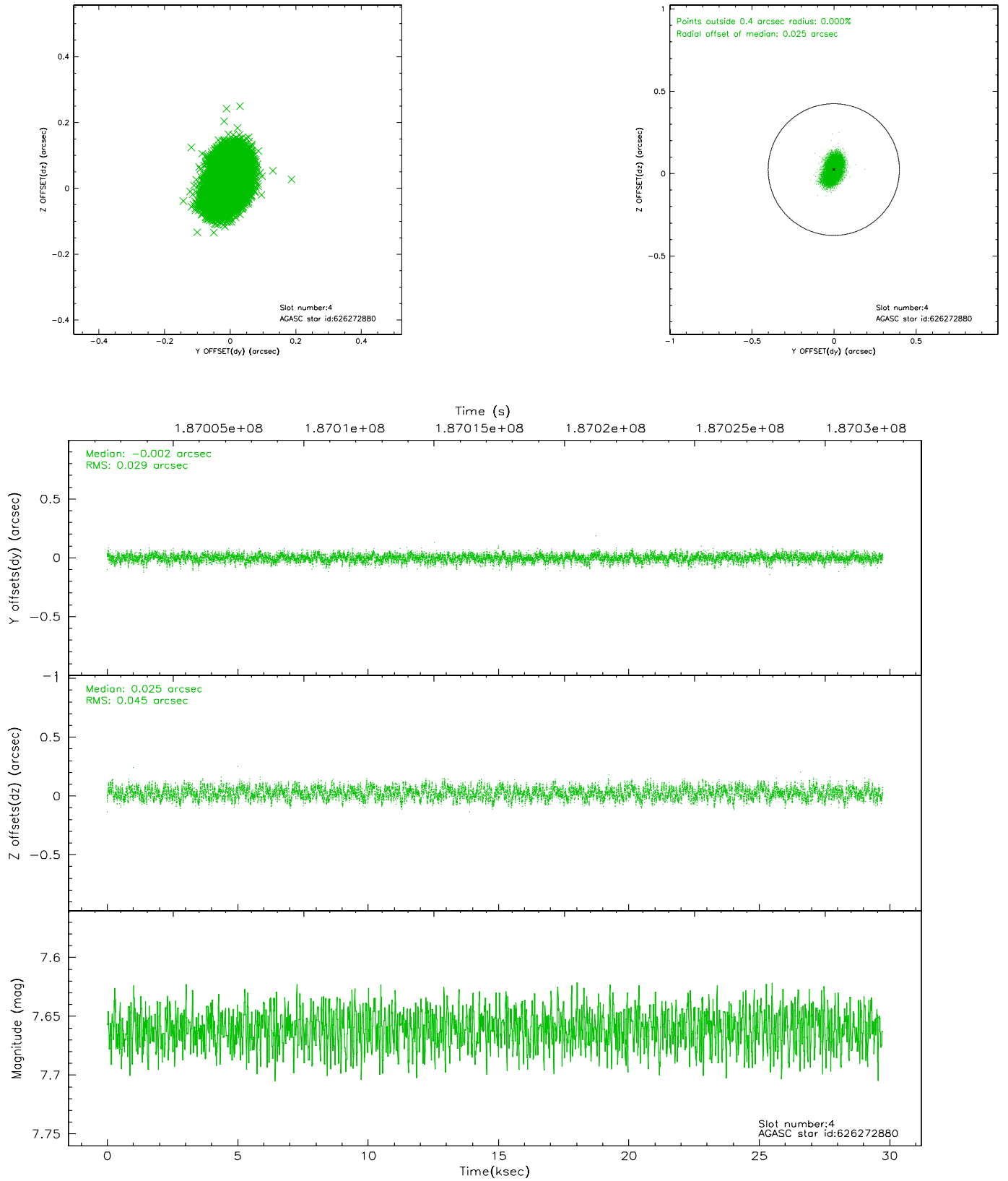


## 2.4 Star Slots

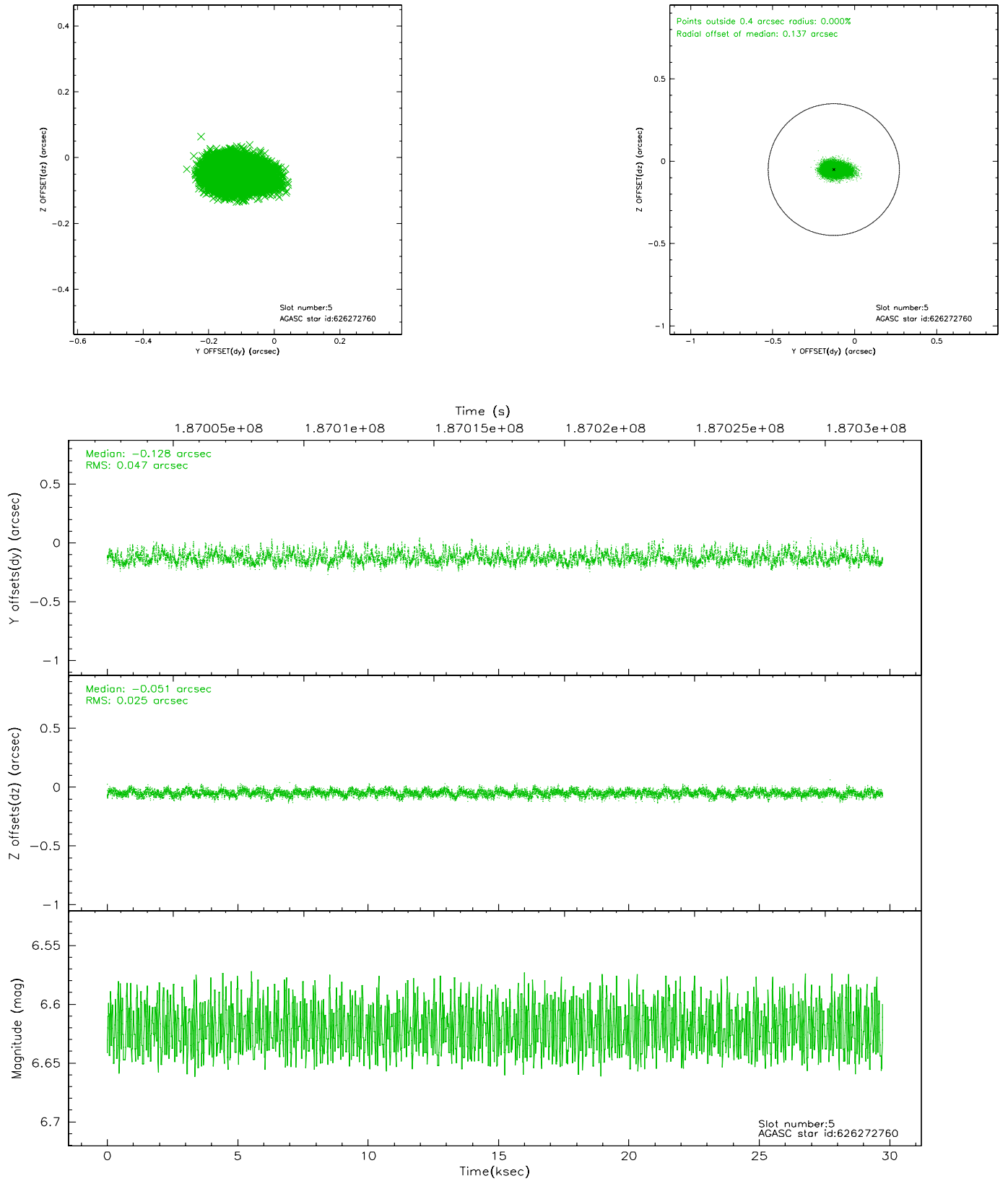
### 2.4.1 Slot 3



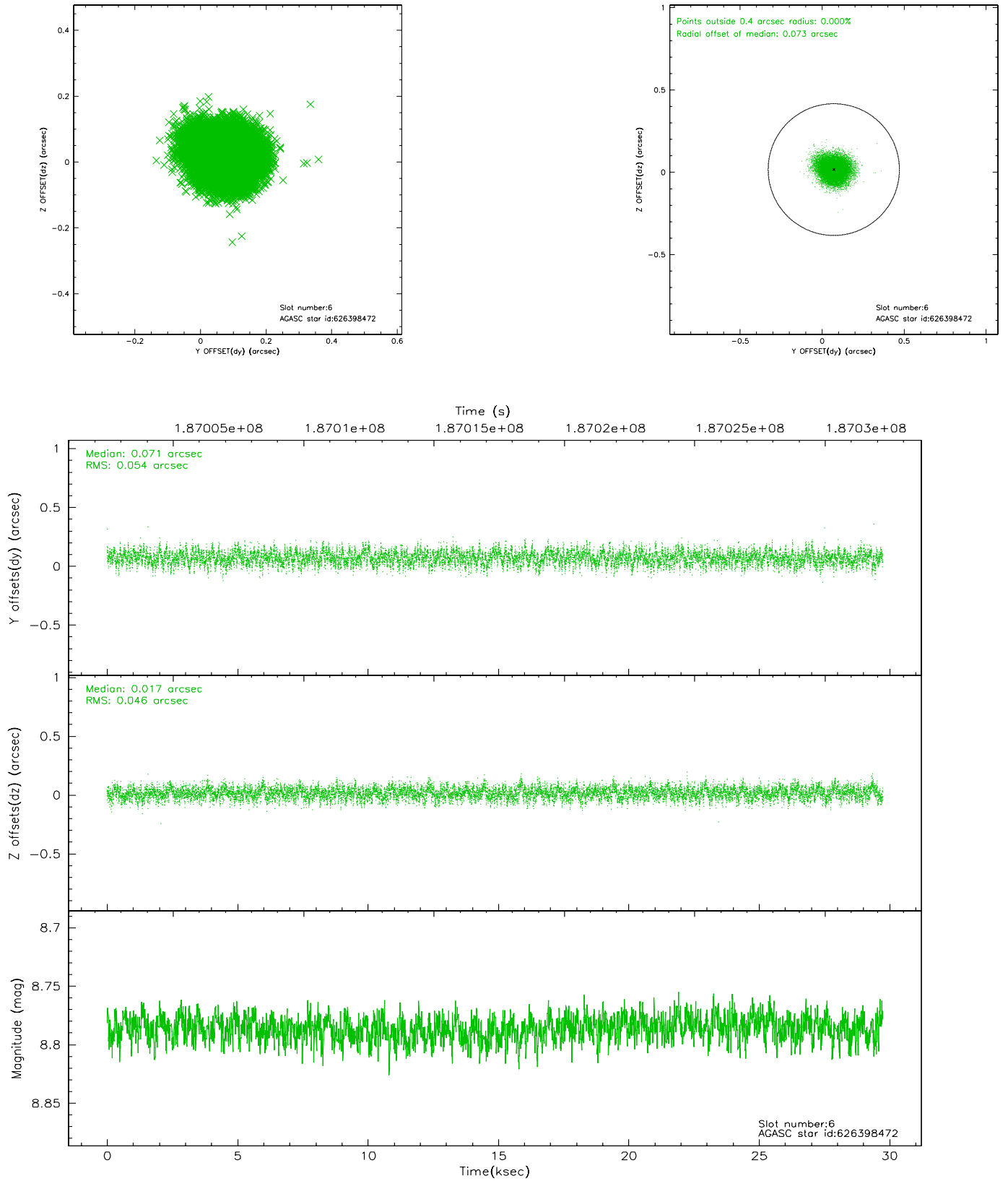
## 2.4.2 Slot 4



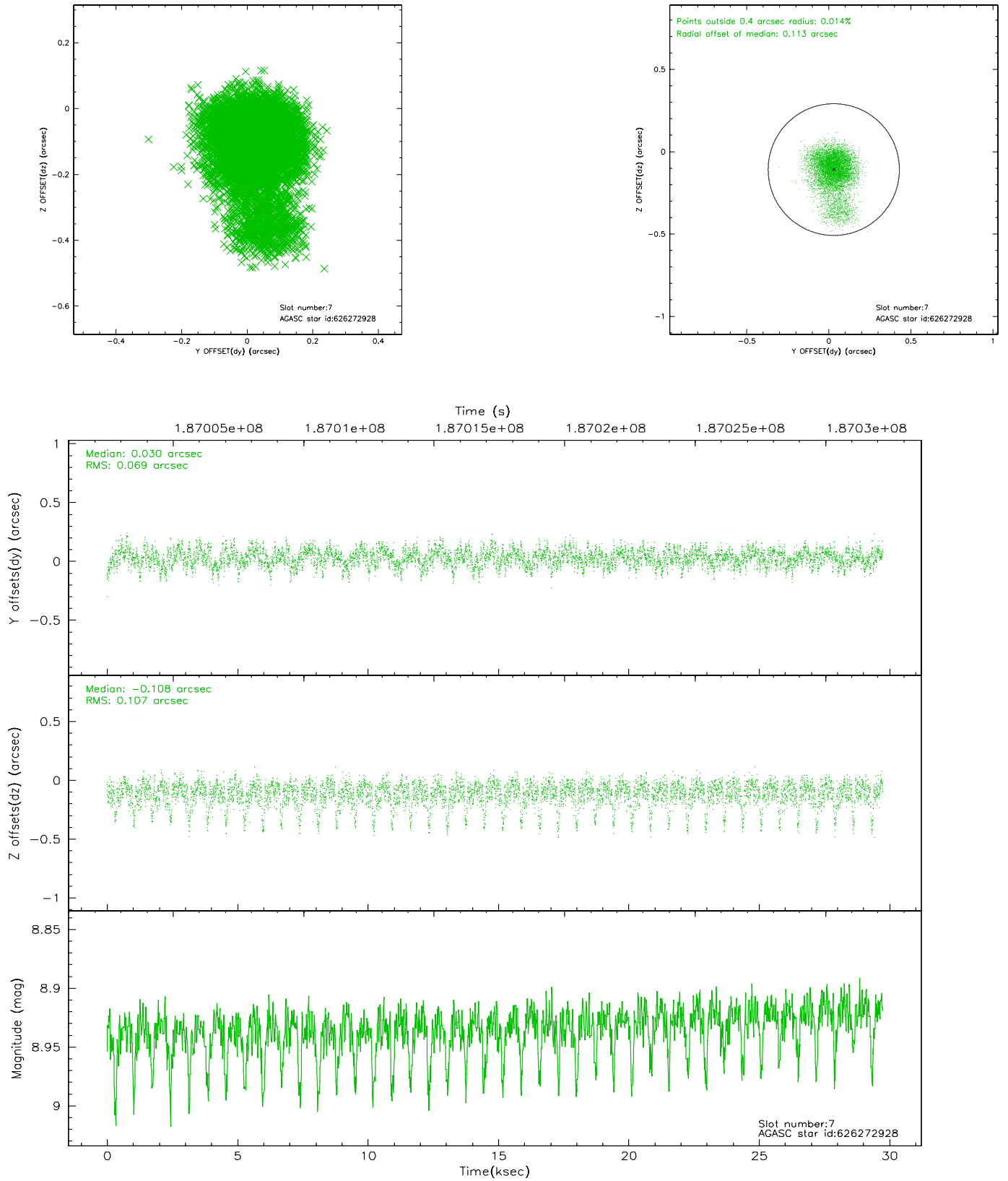
### 2.4.3 Slot 5



## 2.4.4 Slot 6

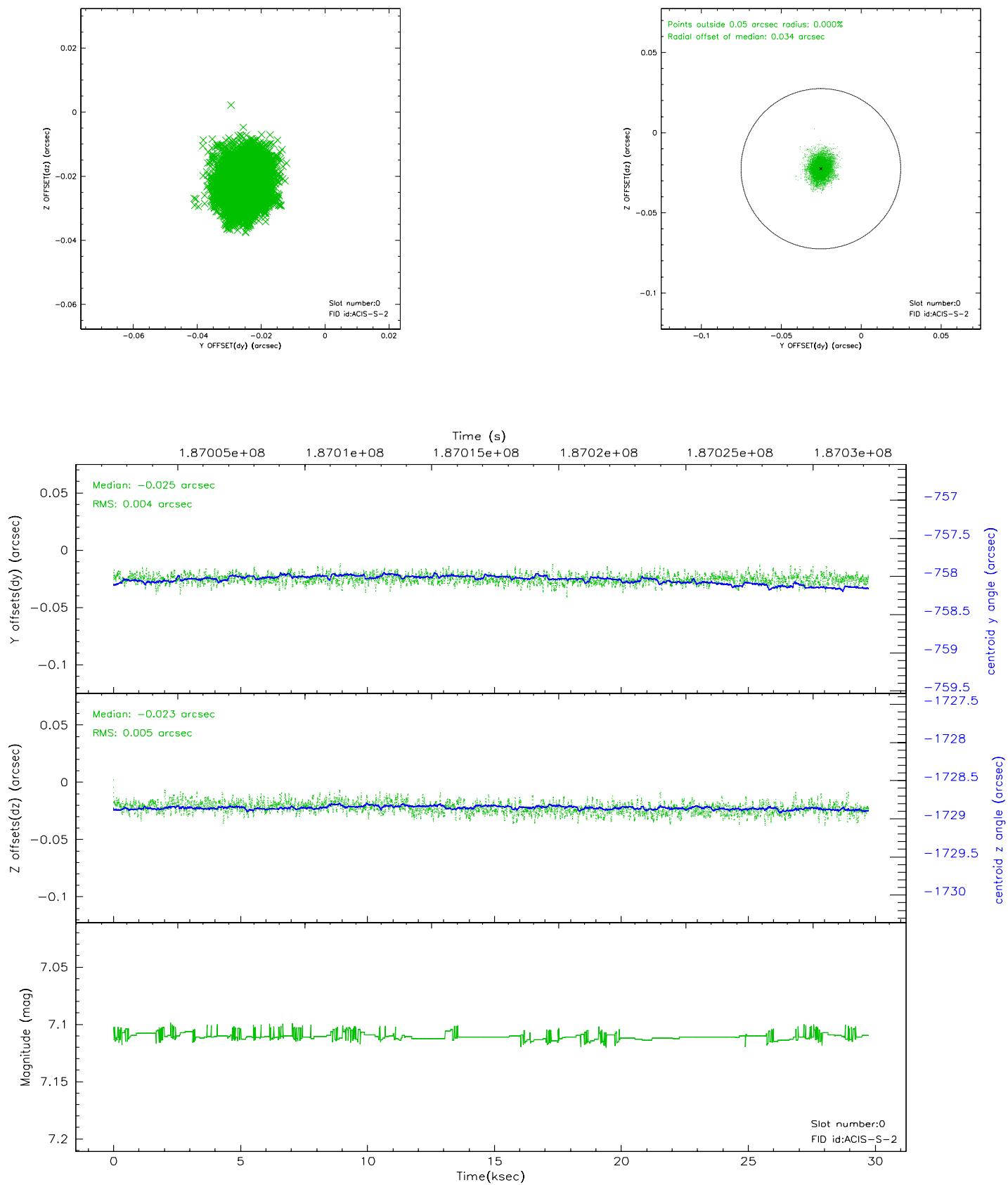


## 2.4.5 Slot 7

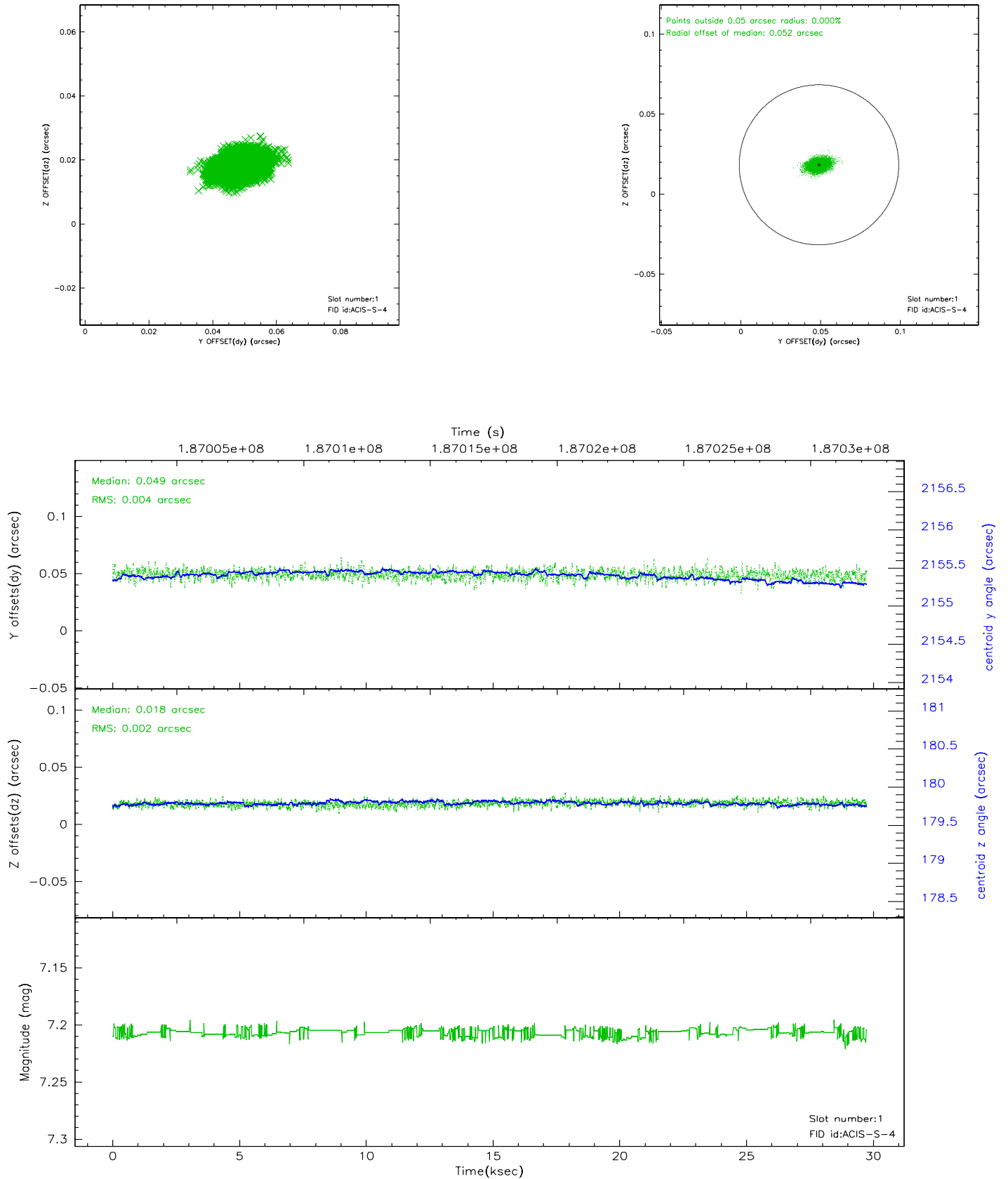


## 2.5 FID Slots

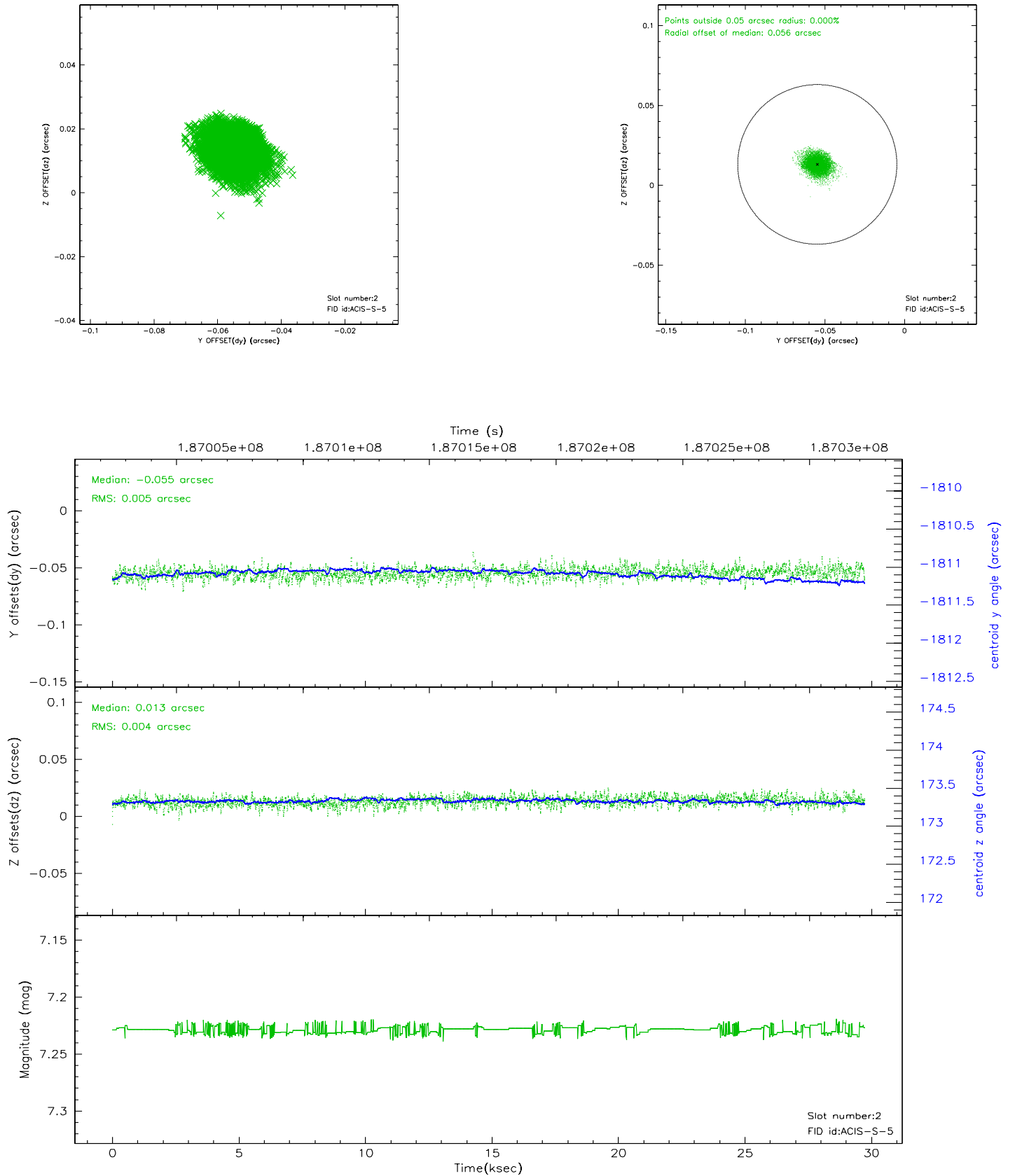
### 2.5.1 Slot 0



## 2.5.2 Slot 1

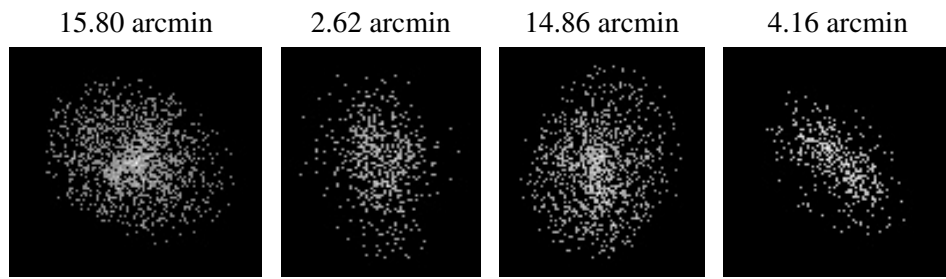


### 2.5.3 Slot 2





### 3 Point Sources



## A Summary

### A.1 Status

V&V Scientist	Joy Nichols
V&V Date (YYYY-MM-DD)	2006.06.23
V&V Edition	1
V&V Disposition and Status	OK
V&V Charge Time	28.956

### A.2 Comments