

V&V Reference Report

L2 ASCDS Version : 7.6.7.2

Observation 4475 - L2 Version 001
Chandra X-Ray Center

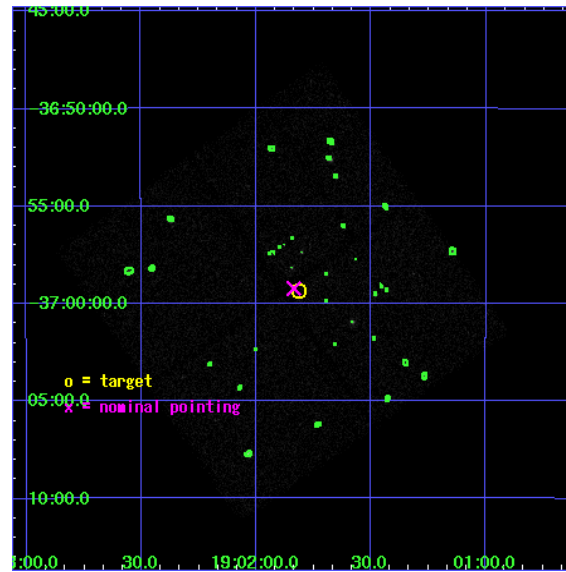
L2 Processing Date : May 23 2006

Contents

1	Front	2
2	OBI	3
2.1	OBI	3
2.1.1	Images	3
2.1.2	Bias	3
2.1.3	Parameters	4
2.1.4	Events	4
2.2	Compared Parameters	5
2.3	Aspect	6
2.4	Star Slots	9
2.4.1	Slot 3	9
2.4.2	Slot 4	10
2.4.3	Slot 5	11
2.4.4	Slot 6	12
2.4.5	Slot 7	13
2.5	FID Slots	14
2.5.1	Slot 0	14
2.5.2	Slot 1	15
2.5.3	Slot 2	16
3	Point Sources	17
A	Summary	18
A.1	Status	18
A.2	Comments	18

1 Front

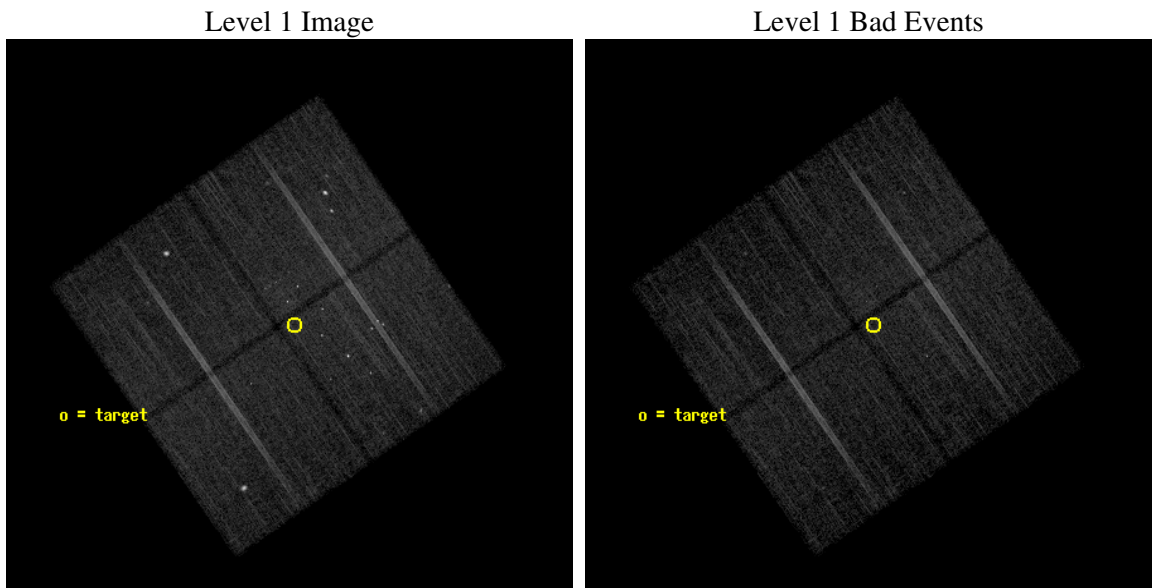
seq_num	200244
obs_id	4475
title	Observation of the Core of the RCrA Dark Cloud
observer	Professor Gordon Garmire
object	RCrADarkCloud
dtcycle	0
cycle	P
ra_targ	285.454083
dec_targ	-36.989628
ra_nom	285.45898337795
dec_nom	-36.987183484667
roll_nom	55.175858363122
revision	2
ontime	20171.61796087
livetime	19908.060922082
ontime0	20177.899961203
ontime1	20174.758971065
ontime2	20174.759010851
ontime3	20171.61796087
l2events	55231



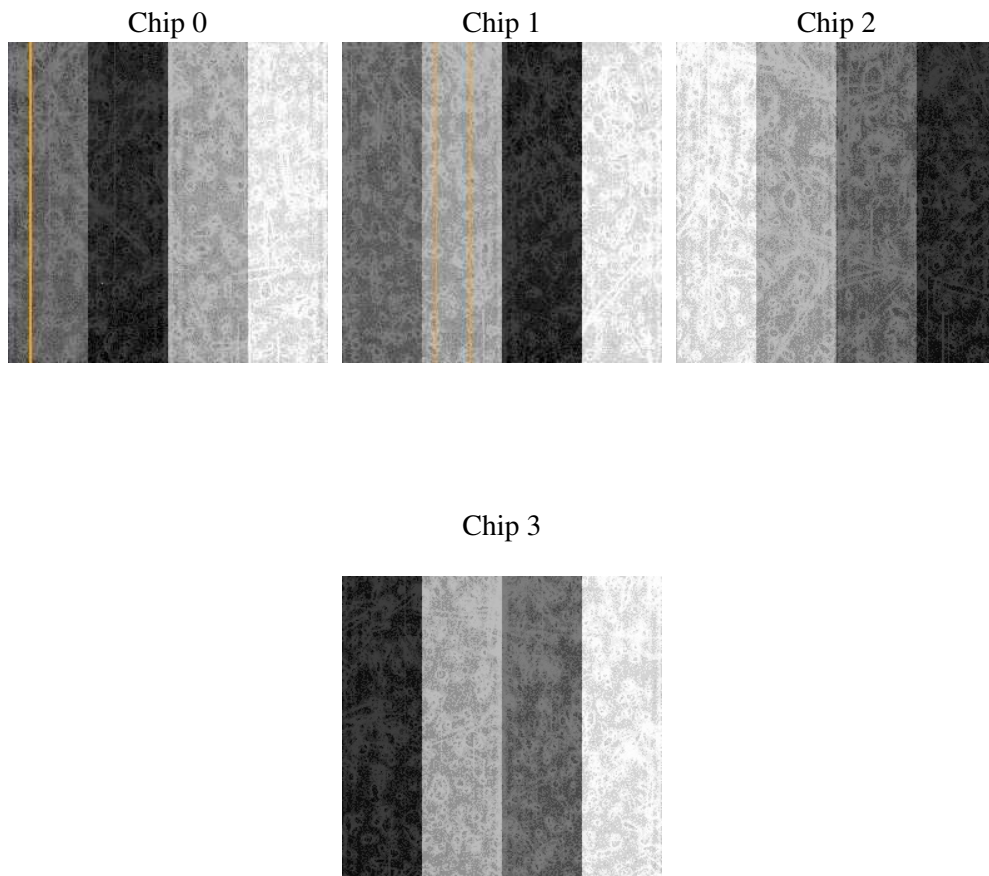
2 OBI

2.1 OBI

2.1.1 Images



2.1.2 Bias



2.1.3 Parameters

obi_num	2
ascdsver	7.6.7.2
caldbver	3.2.2
date	2006-05-23T11:17:21
revision	2

sched_exp_time	20000.000000
ontime	20278.350457877
ontime0	20284.63245821
ontime1	20281.491468072
ontime2	20281.491507858
ontime3	20278.350457877
l1events	486155

2.1.4 Events

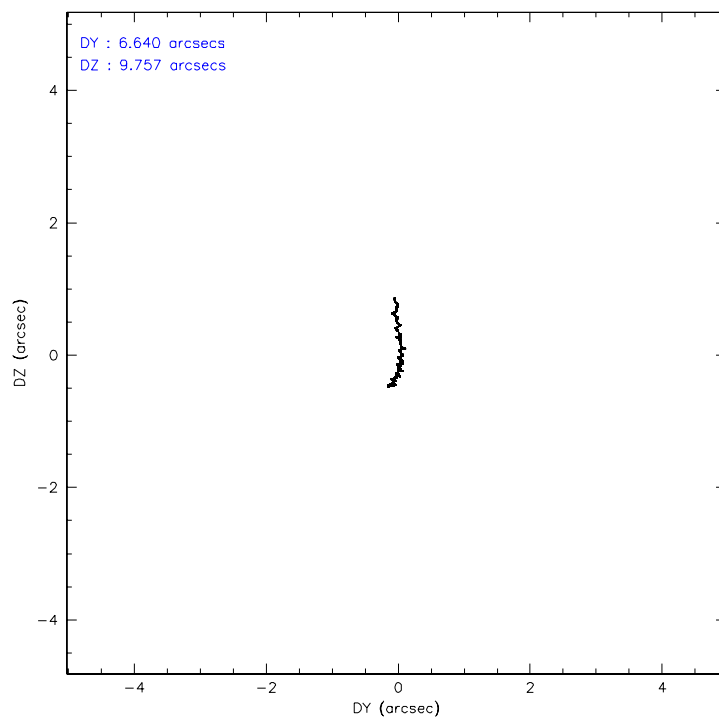
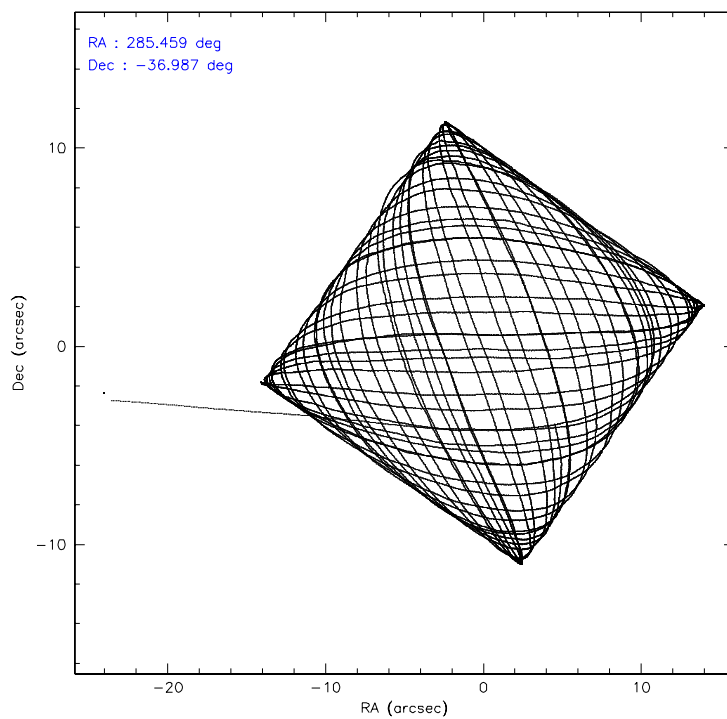
	ccd 0	ccd 1	ccd 2	ccd 3
level 1 events	112076	113062	133976	127041
rejected events	97900	98201	116064	110026
rejected %	87%	86%	86%	86%

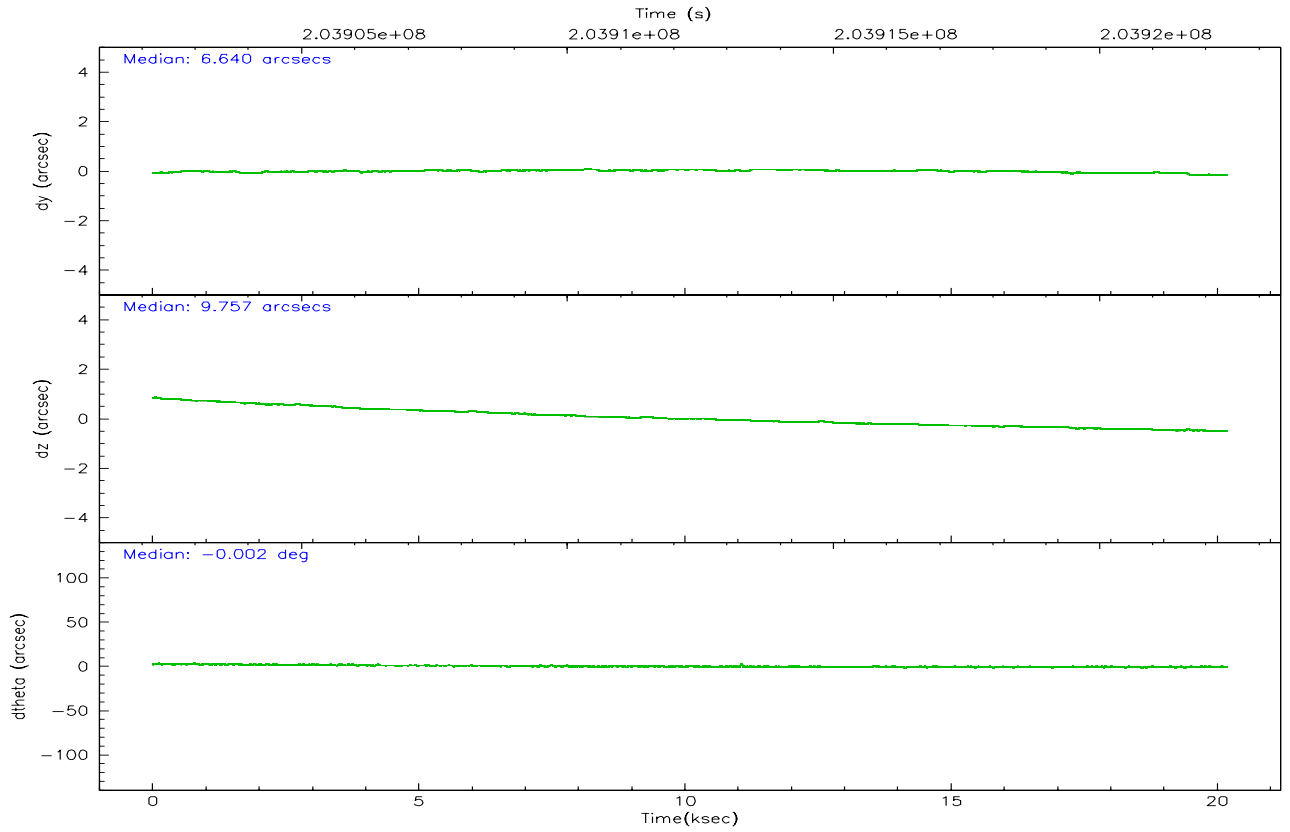
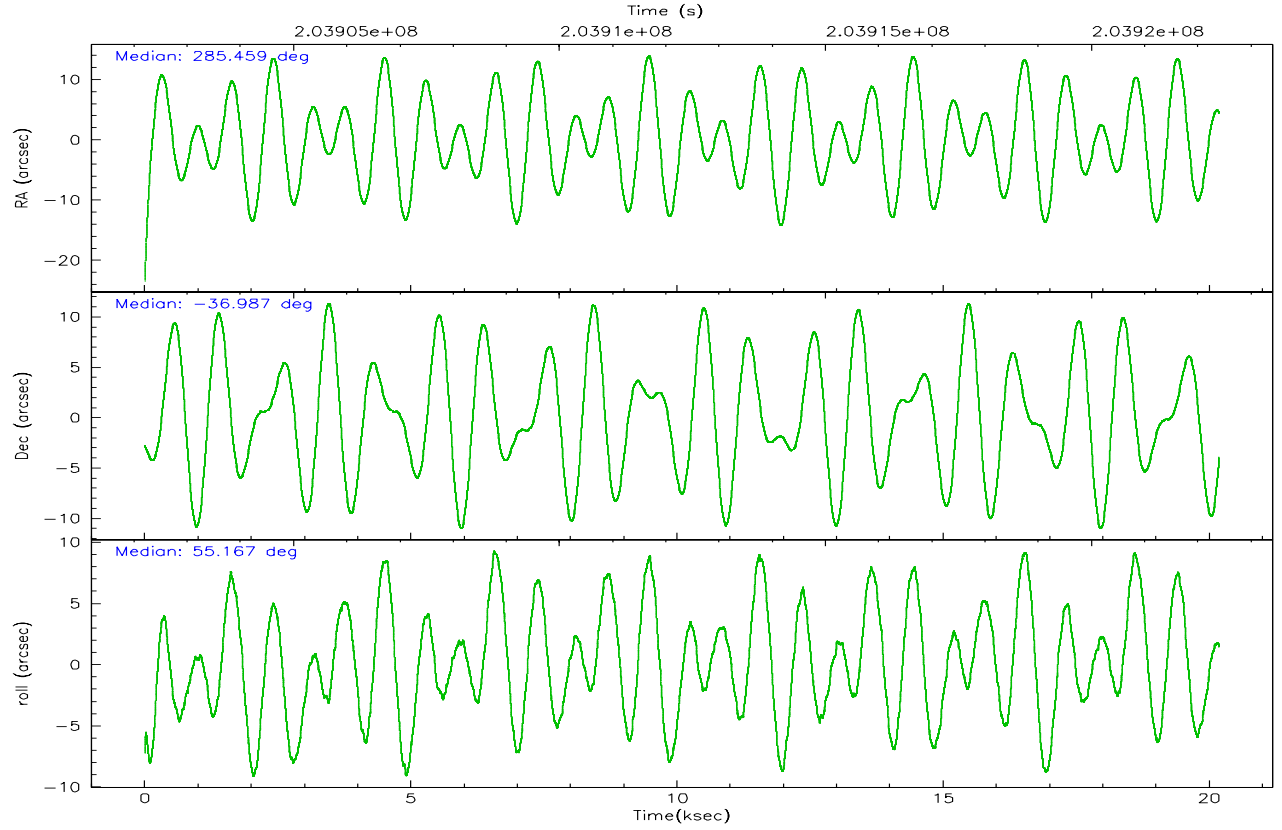
	ccd 0	ccd 1	ccd 2	ccd 3
grade 0 events	6474	6674	9647	9191
	5%	5%	7%	7%
grade 1 events	73	71	146	208
	0%	0%	0%	0%
grade 2 events	2834	2776	3276	2917
	2%	2%	2%	2%
grade 3 events	1416	1548	1459	1405
	1%	1%	1%	1%
grade 4 events	1343	1426	1449	1416
	1%	1%	1%	1%
grade 5 events	3618	3902	3488	4284
	3%	3%	2%	3%
grade 6 events	2198	2505	2167	2178
	1%	2%	1%	1%
grade 7 events	94120	94160	112344	105442
	83%	83%	83%	82%

2.2 Compared Parameters

Parameter	Planned	Actual	Parameter	Planned	Actual
Instrument	ACIS	ACIS	Obspar format version number	6	6
Detector	ACIS-0123	ACIS-0123	Obspar file type	PREDICTED	ACTUAL
Grating	NONE	NONE	Obspar update status	NONE	UPDATED
Data mode	VFAINT	VFAINT	On-chip summing requested	N	N
Observation mode	POINTING	POINTING	Subarray requested	NONE	NONE
Pointing RA	285.456247	285.4589833779467	Alternating exposures requested	N	N
Pointing Dec	-37.014445	-36.98718348466736	Primary exposure time	0.000000	3.1
Pointing Roll	54.965515	55.17585836312232			
SIM focus pos (mm)	-0.782348	-0.7809083437167272			
SIM defocus (mm)	0	0.001439871863259334			
SIM translation stage pos (mm)	-233.592463	-233.5874344608287			
SIM translation stage offset (mm)	0	-0.005018542100998502			
Observation start time	203902398.184000	203901419.96408			
Observation start date	2004-06-17T23:32:14	2004-06-17T23:16:59			
Observation end time	203922398.184000	203923449.77755			
Observation end date	2004-06-18T05:05:34	2004-06-18T05:24:09			
Read mode	TIMED	TIMED			

2.3 Aspect



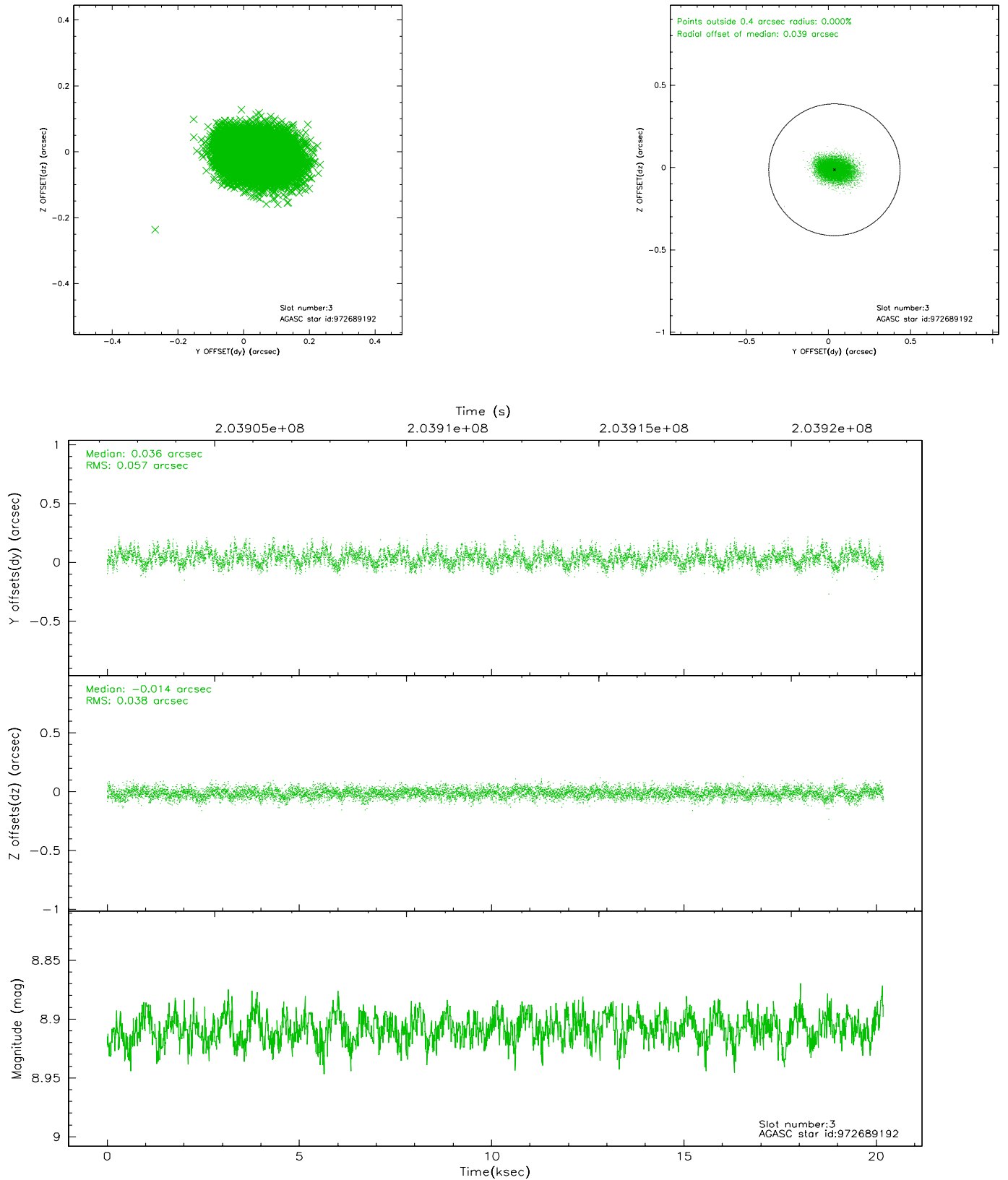


Slot Statistics

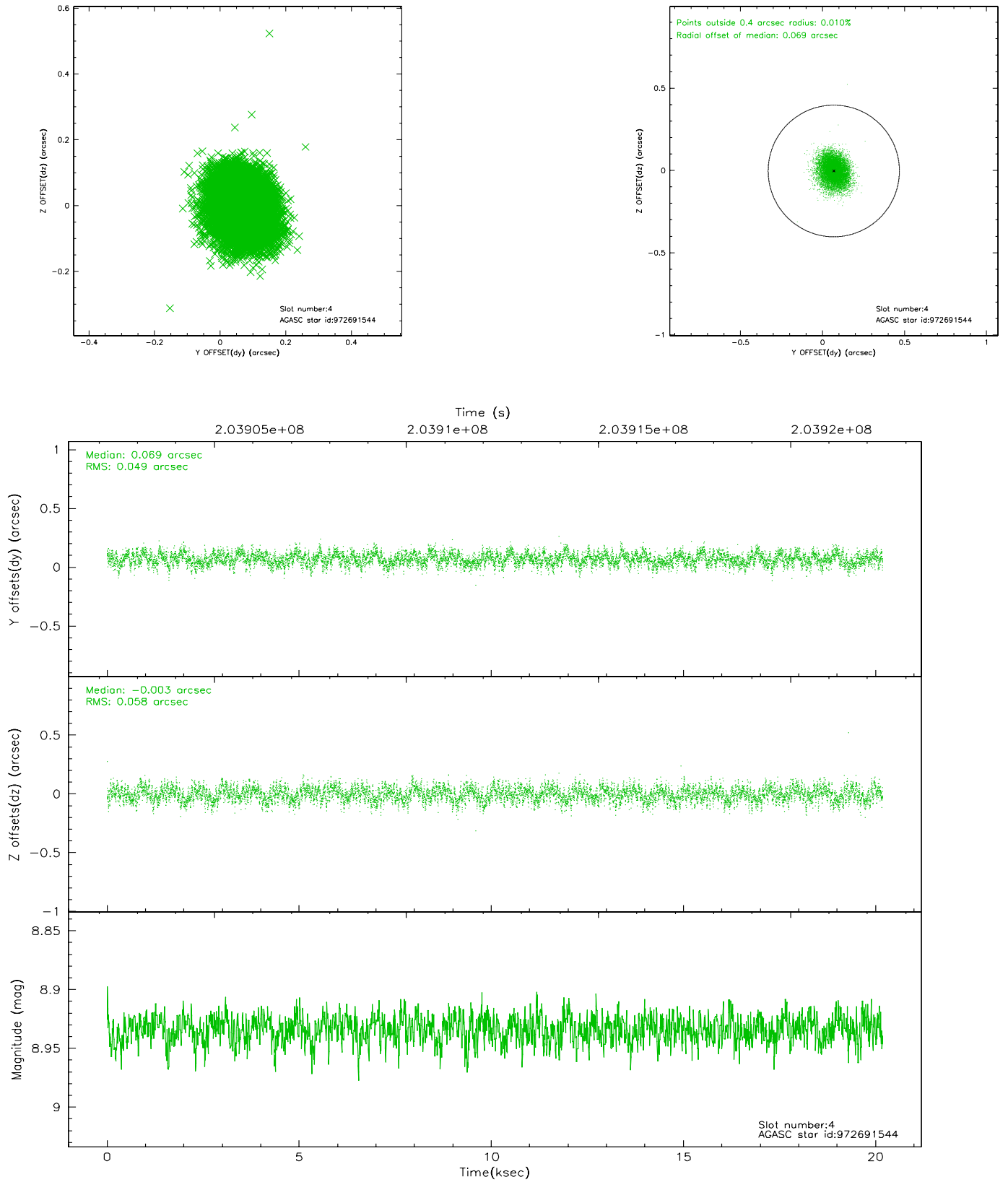
slot	status	id	mag	n_pts	med_dy	med_dz	dr1	dr2	ra	dec	mean_y	mean_z
0	FID	ACIS-I-1	7.24	4923	-0.026	0.066	0.015	0.034	0.000000	0.000000	933.03	-833.21
1	FID	ACIS-I-5	7.24	4922	-0.115	0.016	0.007	0.012	0.000000	0.000000	-1815.06	1064.14
2	FID	ACIS-I-6	7.25	4922	0.049	-0.010	0.014	0.024	0.000000	0.000000	398.45	1708.82
3	GUIDE	972689192	8.91	9844	0.036	-0.014	0.072	0.120	284.589186	-37.133486	-1788.71	1784.94
4	GUIDE	972691544	8.93	9841	0.069	-0.003	0.081	0.129	284.930895	-36.788005	-205.67	1705.98
5	GUIDE	972693120	7.63	9846	-0.069	-0.155	0.052	0.083	285.412210	-36.890704	292.09	359.72
6	GUIDE	972698608	9.27	9843	-0.002	-0.032	0.078	0.130	285.647031	-36.601212	1534.43	402.58
7	GUIDE	972816680	9.15	9837	-0.034	0.205	0.068	0.114	286.054324	-36.904693	1308.05	-1185.44

2.4 Star Slots

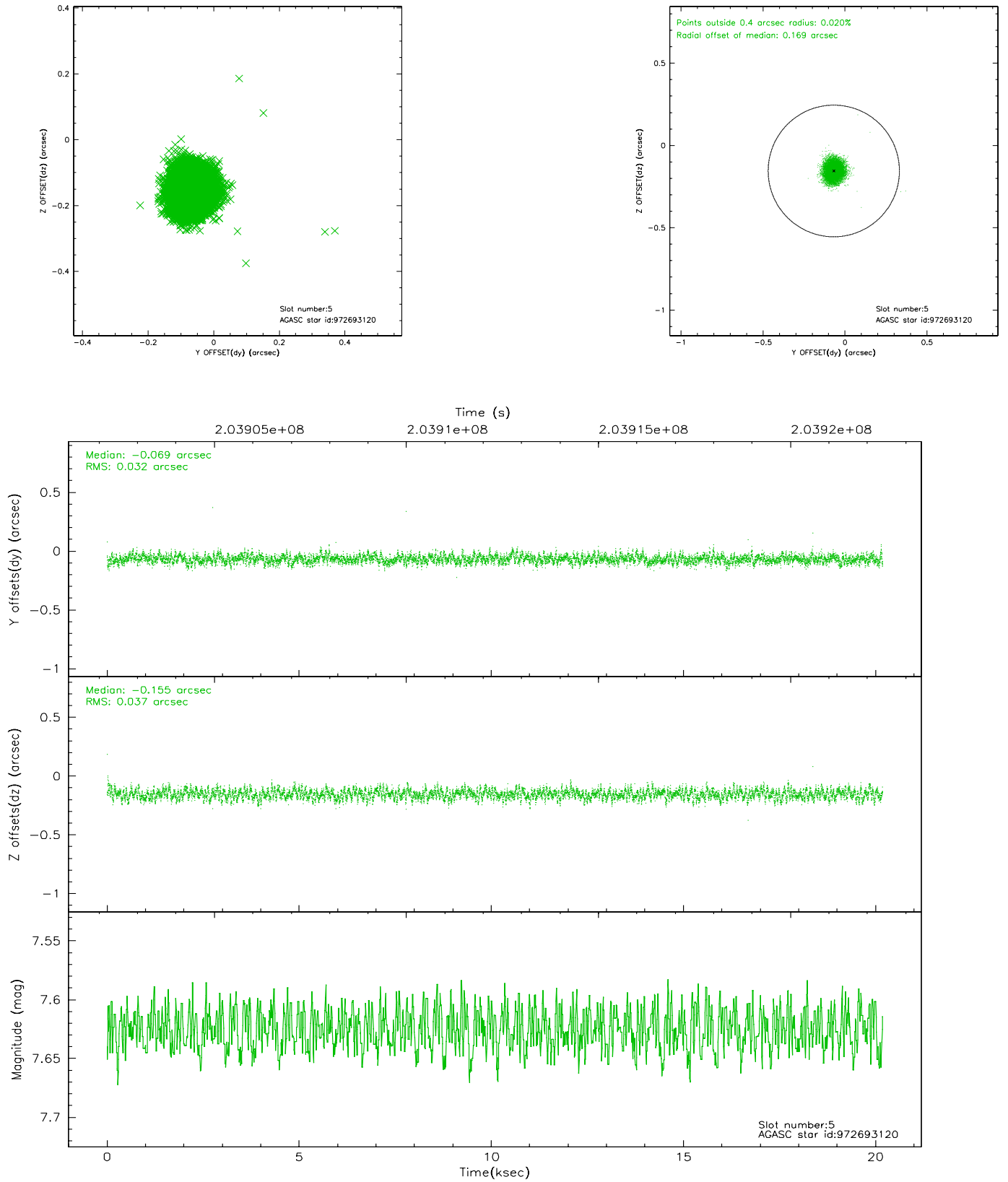
2.4.1 Slot 3



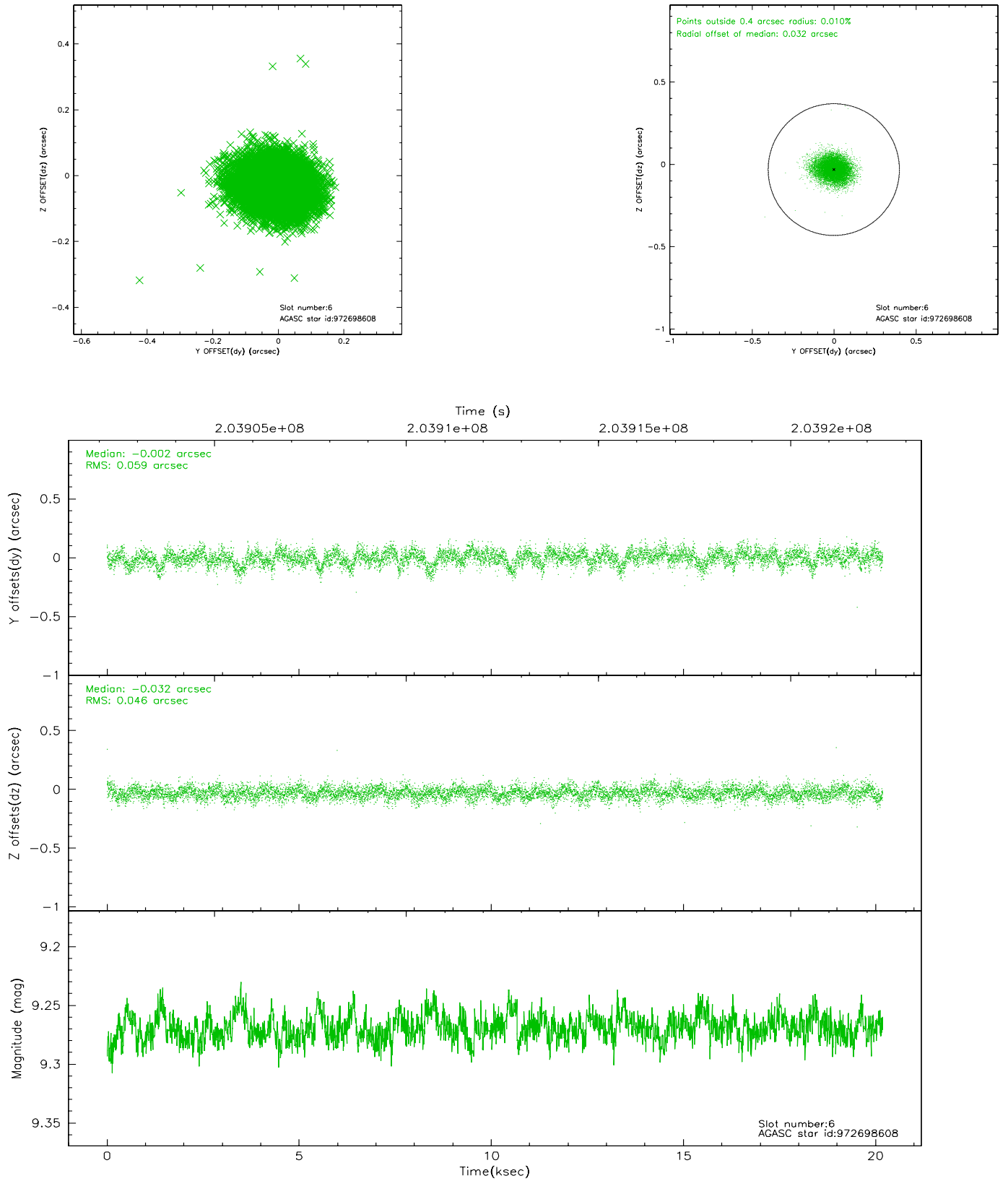
2.4.2 Slot 4



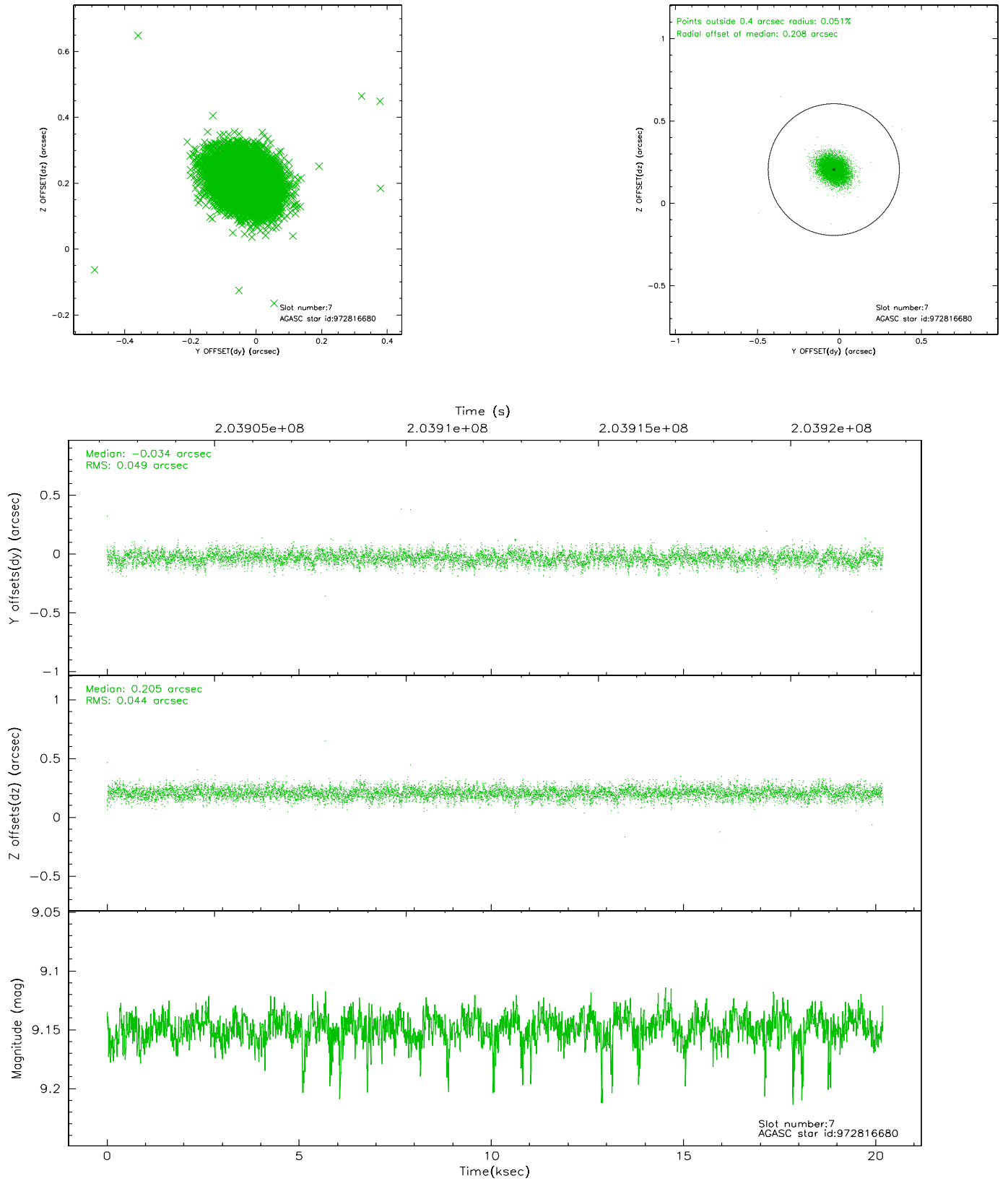
2.4.3 Slot 5



2.4.4 Slot 6

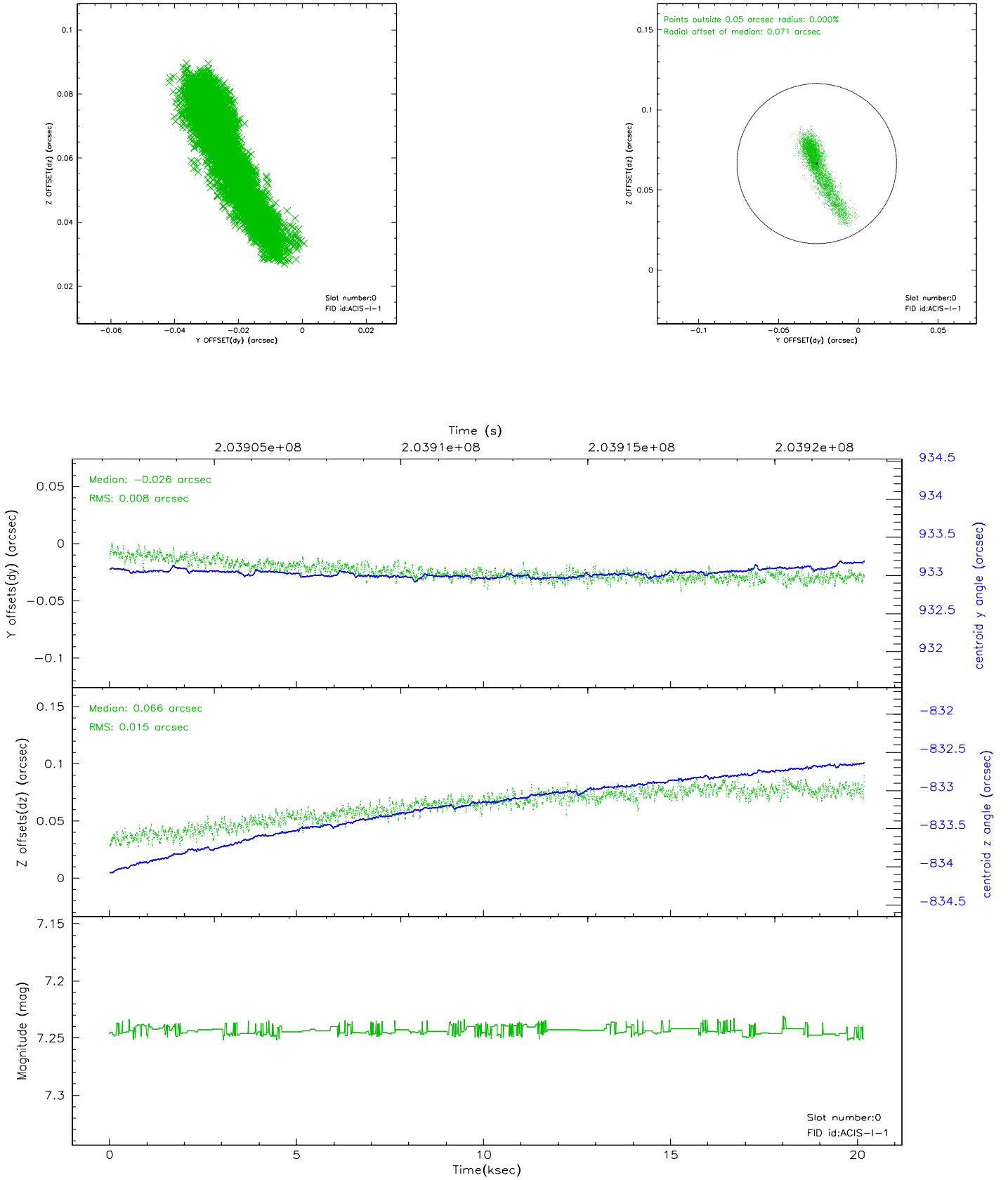


2.4.5 Slot 7

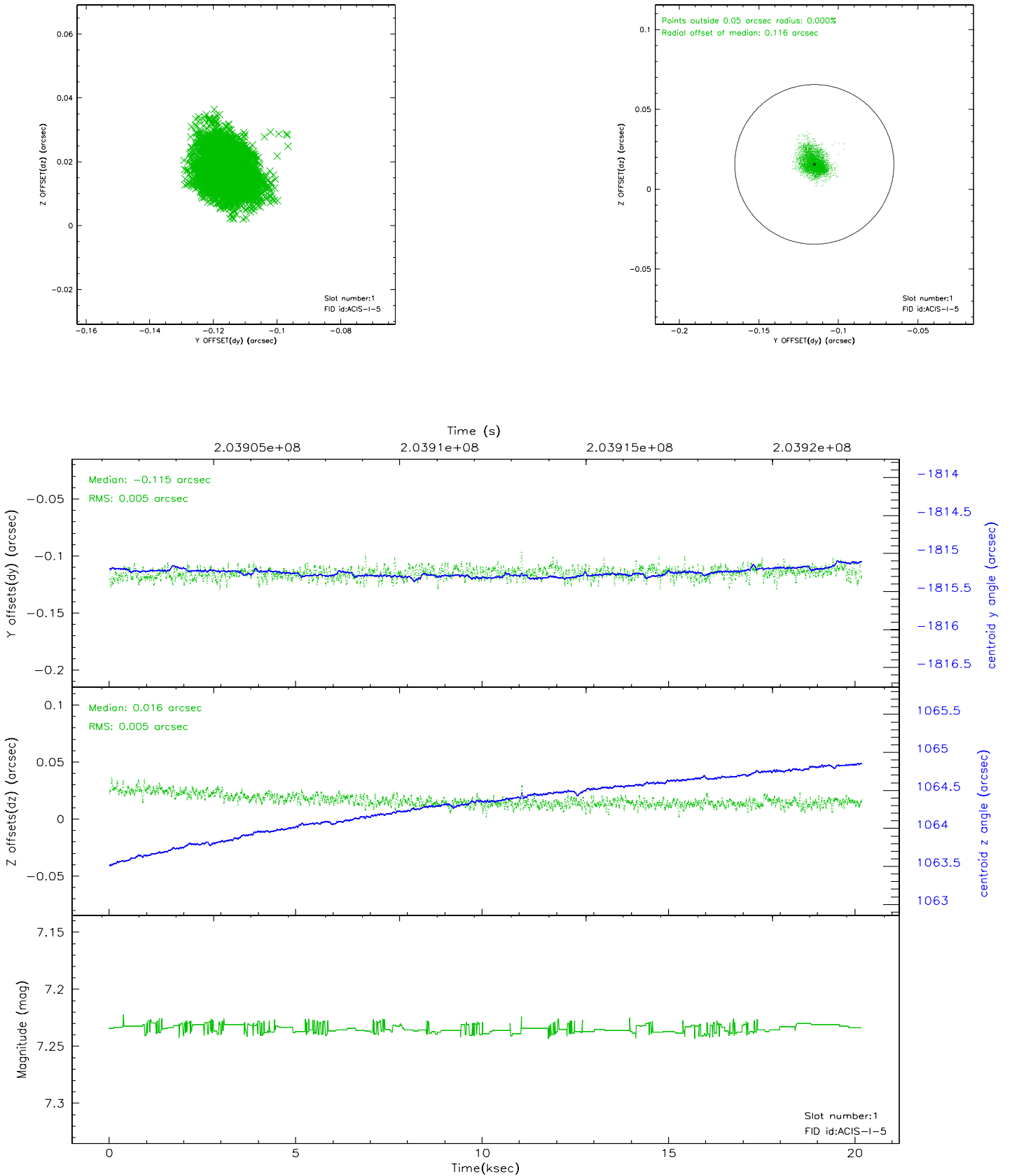


2.5 FID Slots

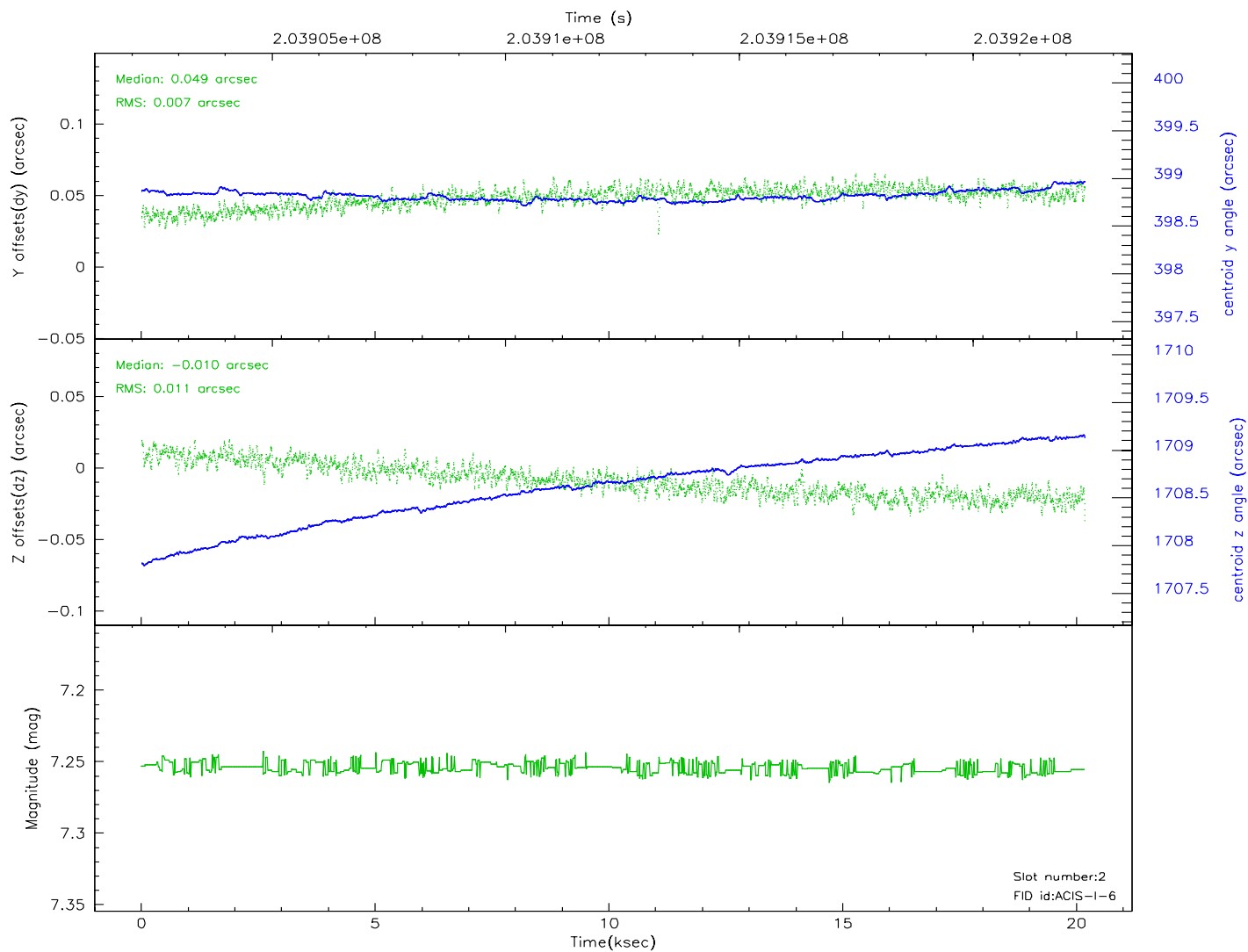
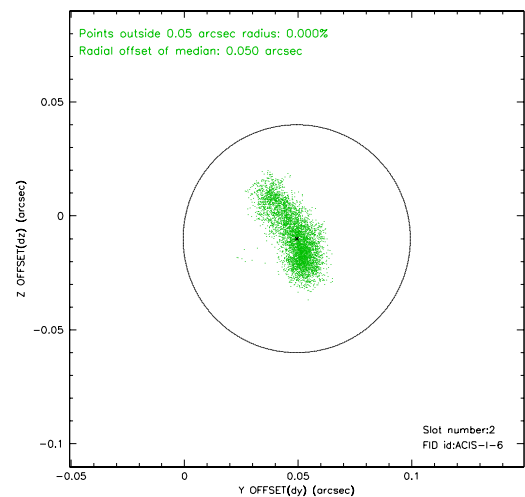
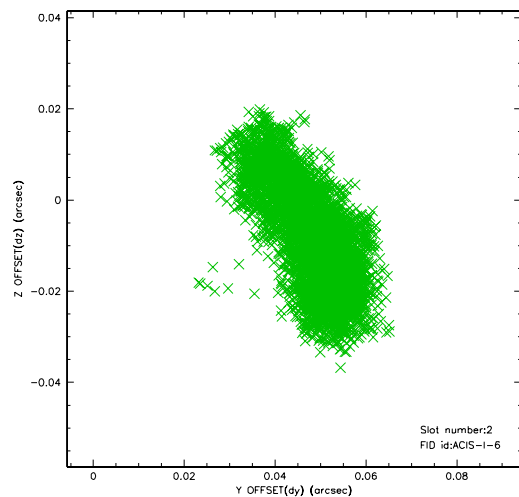
2.5.1 Slot 0



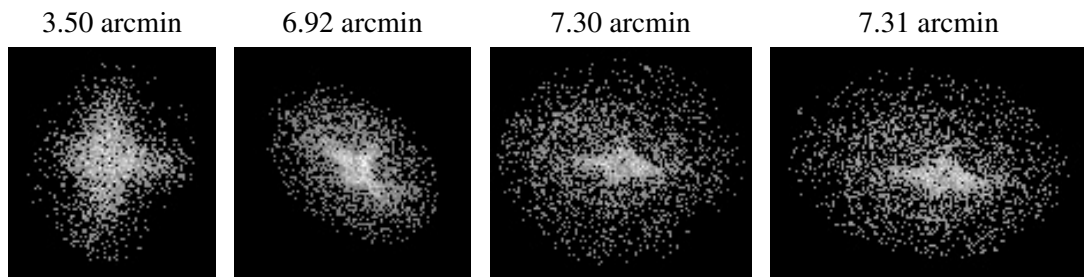
2.5.2 Slot 1



2.5.3 Slot 2



3 Point Sources



A Summary

A.1 Status

V&V Scientist	Beth Sundheim
V&V Date (YYYY-MM-DD)	2006.05.23
V&V Edition	1
V&V Disposition and Status	OK
V&V Charge Time	20.171

A.2 Comments