

V&V Reference Report

L2 ASCDS Version : 8.4.5

Observation 3649 - L2 Version 5
Chandra X-Ray Center

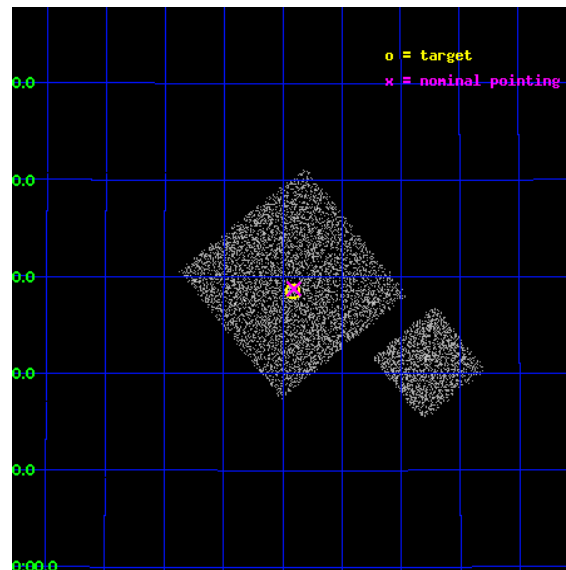
L2 Processing Date : Dec 28 2012

Contents

1	Front	2
2	OBI	3
2.1	OBI	3
2.1.1	Images	3
2.1.2	Bias	3
2.1.3	Parameters	4
2.1.4	Events	4
2.2	Compared Parameters	5
2.3	Aspect	6
2.4	Star Slots	9
2.4.1	Slot 3	9
2.4.2	Slot 4	10
2.4.3	Slot 5	11
2.4.4	Slot 6	12
2.4.5	Slot 7	13
2.5	FID Slots	14
2.5.1	Slot 0	14
2.5.2	Slot 1	15
A	Summary	16
A.1	Status	16
A.2	Comments	16

1 Front

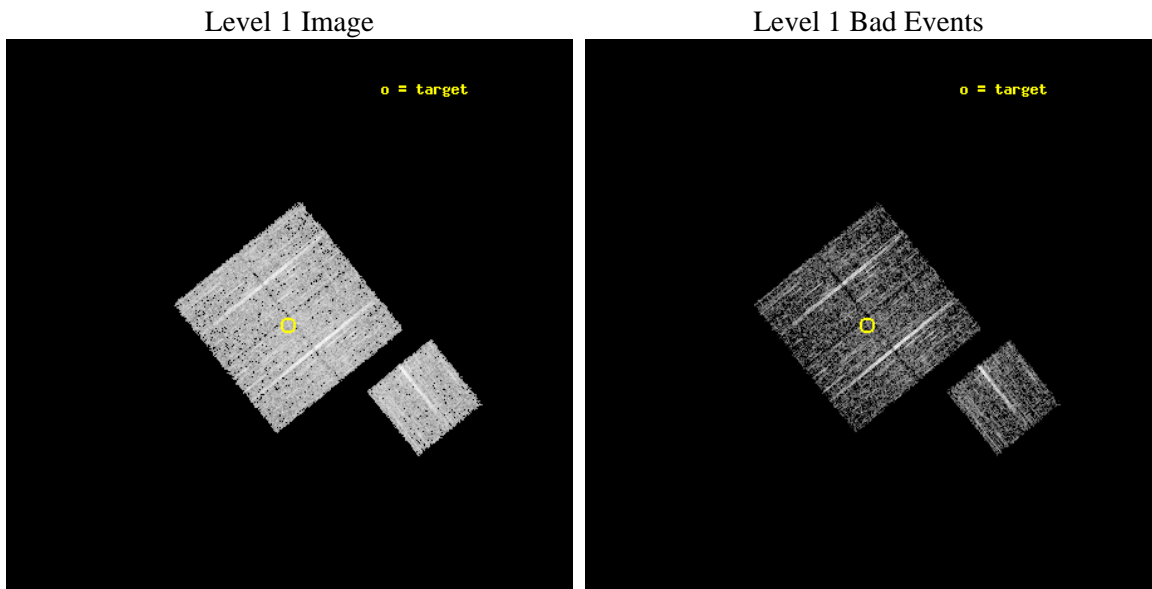
seq_num	900249	Sequence number
obs_id	3649	Observation id
title	CHANDRA LARGE SCALE SURVEY OF THE NOAO BOOTES DEEP FIELD	Proposal
observer	Dr. Stephen Murray	Principal investigator
object	NOAO FIELD F10	Source name
dtcycle	0	
cycle	P	events from which exps? Prim/Second/Both
ra_targ	217.604097	Observer's specified target RA [deg]
dec_targ	34.475388	Observer's specified target Dec [deg]
ra_nom	217.60148785908	Nominal RA [deg]
dec_nom	34.479468613369	Nominal Dec [deg]
roll_nom	141.0101818101	Nominal Roll [deg]
revision	5	Processing version of data
ontime	4673.6970445812	Sum of GTIs [s]
livetime	4612.631751968	Livetime [s]
ontime0	4670.4329443276	Sum of GTIs [s]
ontime1	4670.4739843309	Sum of GTIs [s]
ontime2	4667.3740541041	Sum of GTIs [s]
ontime3	4673.6970445812	Sum of GTIs [s]
ontime6	4670.3919043243	Sum of GTIs [s]
l2events	9337	Number of level 2 events



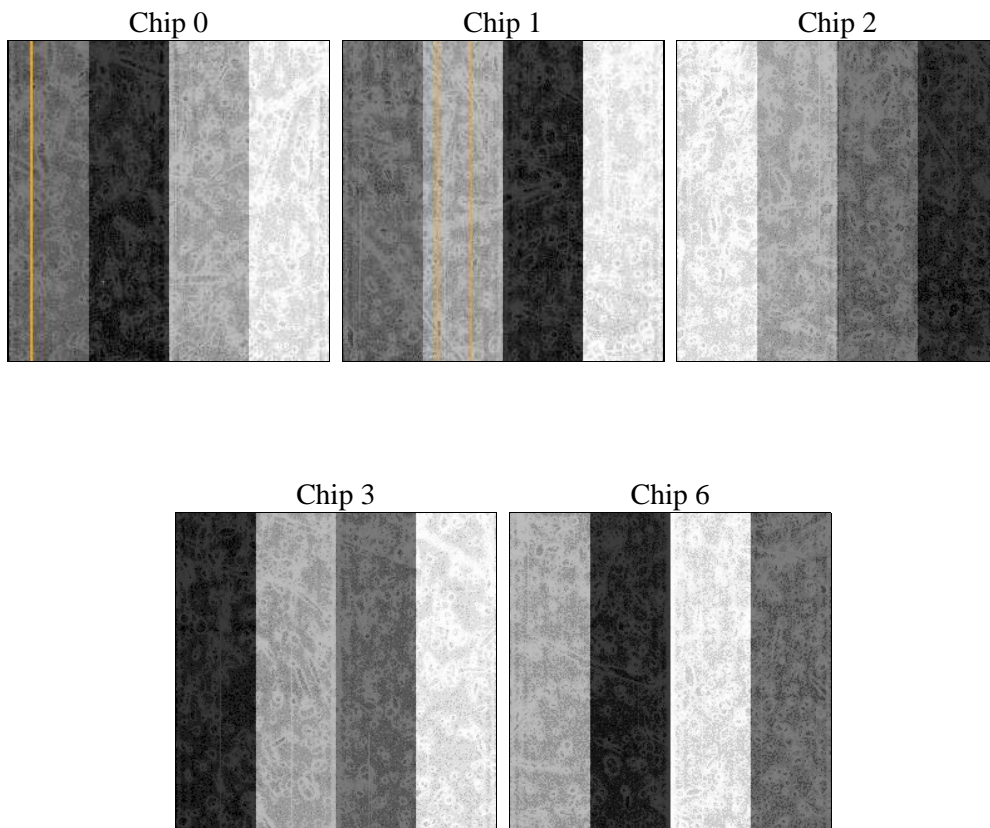
2 OBI

2.1 OBI

2.1.1 Images



2.1.2 Bias



2.1.3 Parameters

obi_num	1	Obi number	sched_exp_time	4900.000000	[s] Scheduled observation exposure time
ascdsver	8.5.1.1	Processing system revision	ontime	4673.6970445812	Sum of GTIs [s]
caldsver	4.5.5	 	ontime0	4670.4329443276	Sum of GTIs [s]
date	2012-12-29T00:00:47	Date and time of file creation	ontime1	4670.4739843309	Sum of GTIs [s]
revision	5	Processing version of data	ontime2	4667.3740541041	Sum of GTIs [s]
			ontime3	4673.6970445812	Sum of GTIs [s]
			ontime6	4670.3919043243	Sum of GTIs [s]
			l1events	117687	Number of level 1 events

2.1.4 Events

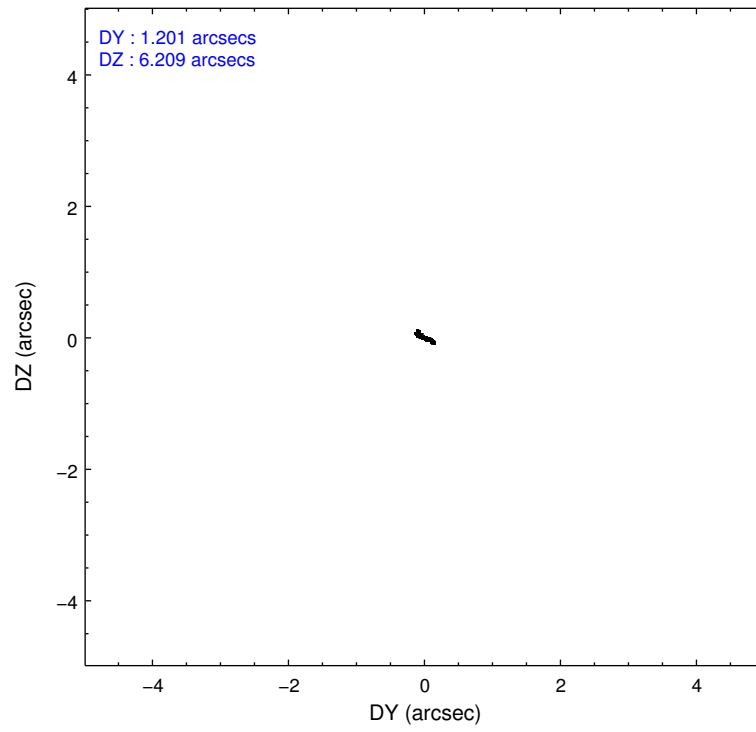
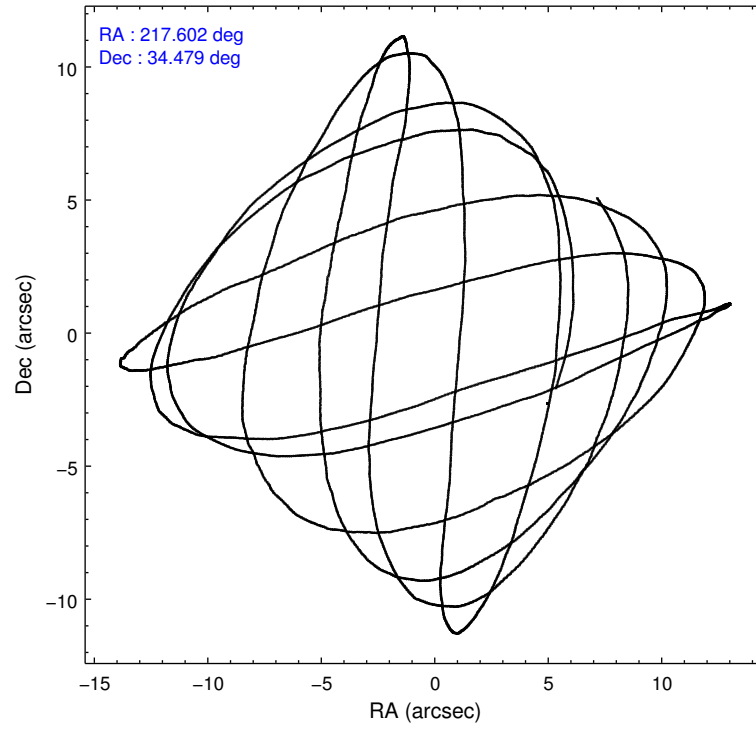
	ccd 0	ccd 1	ccd 2	ccd 3	ccd 6
level 1 events	23025	21141	25539	23710	24272
rejected events	20720	18748	23339	21605	21845
rejected %	89%	88%	91%	91%	90%

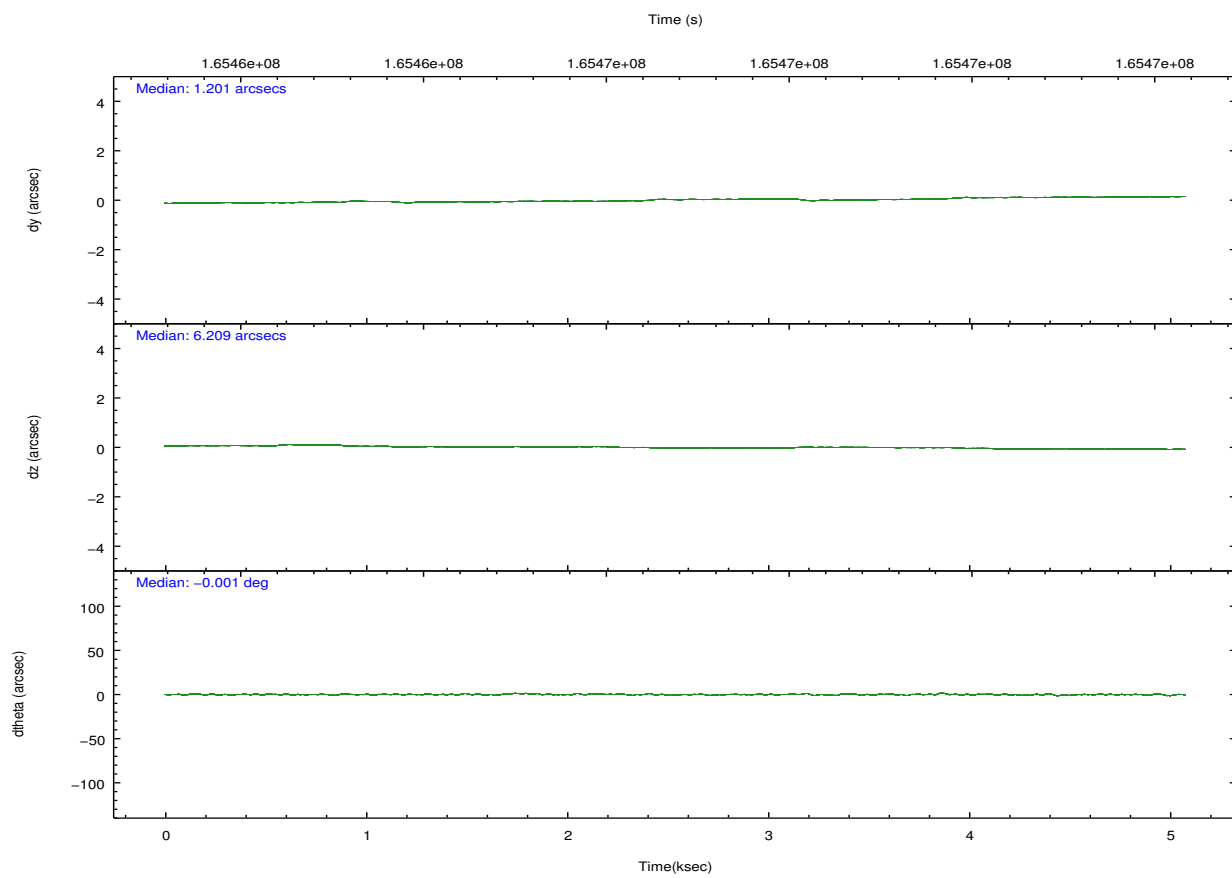
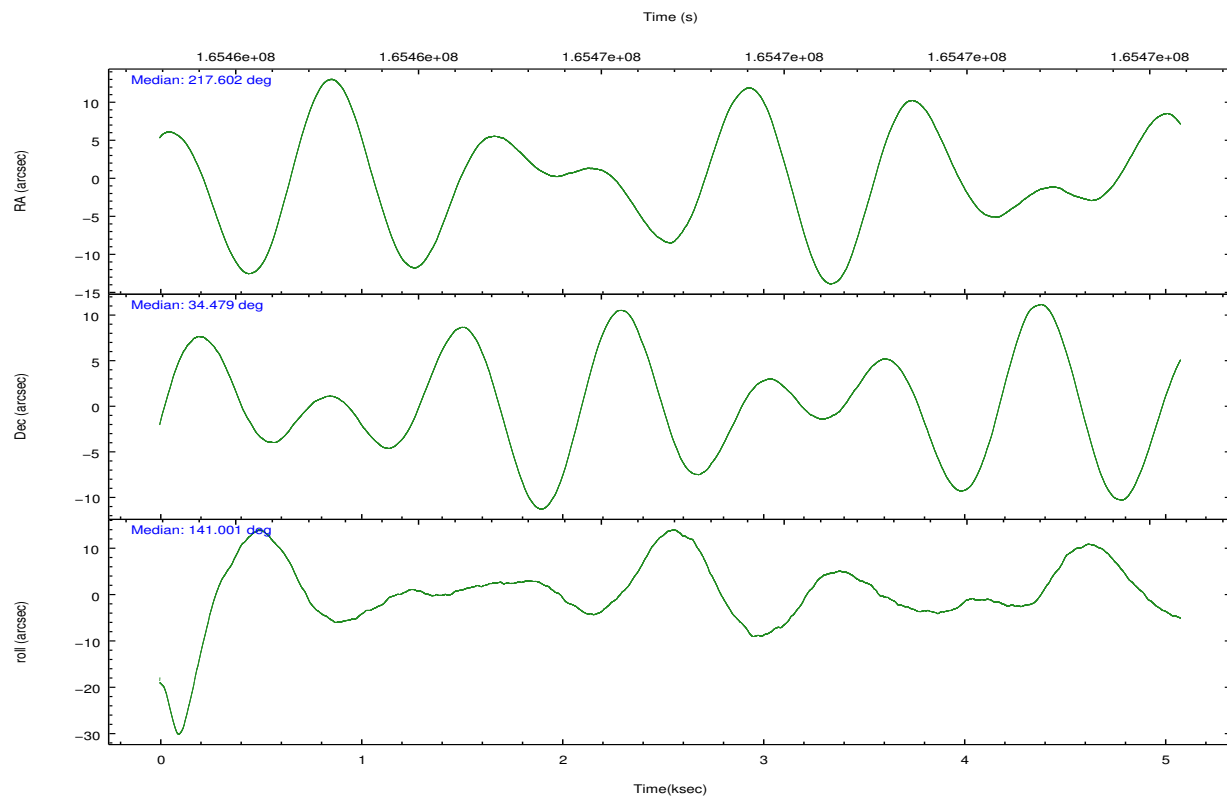
	ccd 0	ccd 1	ccd 2	ccd 3	ccd 6
grade 0 events	800	864	855	719	937
	3%	4%	3%	3%	3%
grade 1 events	11	7	12	13	15
	0%	0%	0%	0%	0%
grade 2 events	576	498	505	425	468
	2%	2%	1%	1%	1%
grade 3 events	255	282	222	251	265
	1%	1%	0%	1%	1%
grade 4 events	269	285	253	282	278
	1%	1%	0%	1%	1%
grade 5 events	660	707	632	730	740
	2%	3%	2%	3%	3%
grade 6 events	405	466	366	429	479
	1%	2%	1%	1%	1%
grade 7 events	20049	18032	22694	20861	21090
	87%	85%	88%	87%	86%

2.2 Compared Parameters

Parameter	Planned	Actual	Parameter	Planned	Actual
Instrument	ACIS	ACIS	Obspar format version number	7	7
Detector	ACIS-01236	ACIS-01236	Obspar file type	PREDICTED	ACTUAL
Grating	NONE	NONE	Obspar update status	NONE	UPDATED
Data mode	VFAINT	VFAINT	Number of optional ACIS chips dropped	0	0
Observation mode	POINTING	POINTING	On-chip summing requested	N	N
[deg] Pointing RA	217.634291	217.6014878590786	Subarray requested	NONE	NONE
[deg] Pointing Dec	34.475306	34.47946861336911	Alternating exposures requested	N	N
[deg] Pointing Roll	140.782912	141.0101818100999	[s] Primary exposure time	0.000000	3.1
[mm] SIM focus pos	-0.782348	-0.7809083437167272			
[mm] SIM defocus	0	0.001439871863259334			
[mm] SIM translation stage pos	-233.592463	-233.5874344608287			
[mm] SIM translation stage offset	0	-0.005018542100998502			
[s] Observation start time (MET)	165464014.184000	165463637.96552			
Observation start date	2003-03-31T02:12:30	2003-03-31T02:07:17			
[s] Observation end time (MET)	165468914.184000	165469047.91575			
Observation end date	2003-03-31T03:34:10	2003-03-31T03:37:27			
Read mode	TIMED	TIMED			

2.3 Aspect



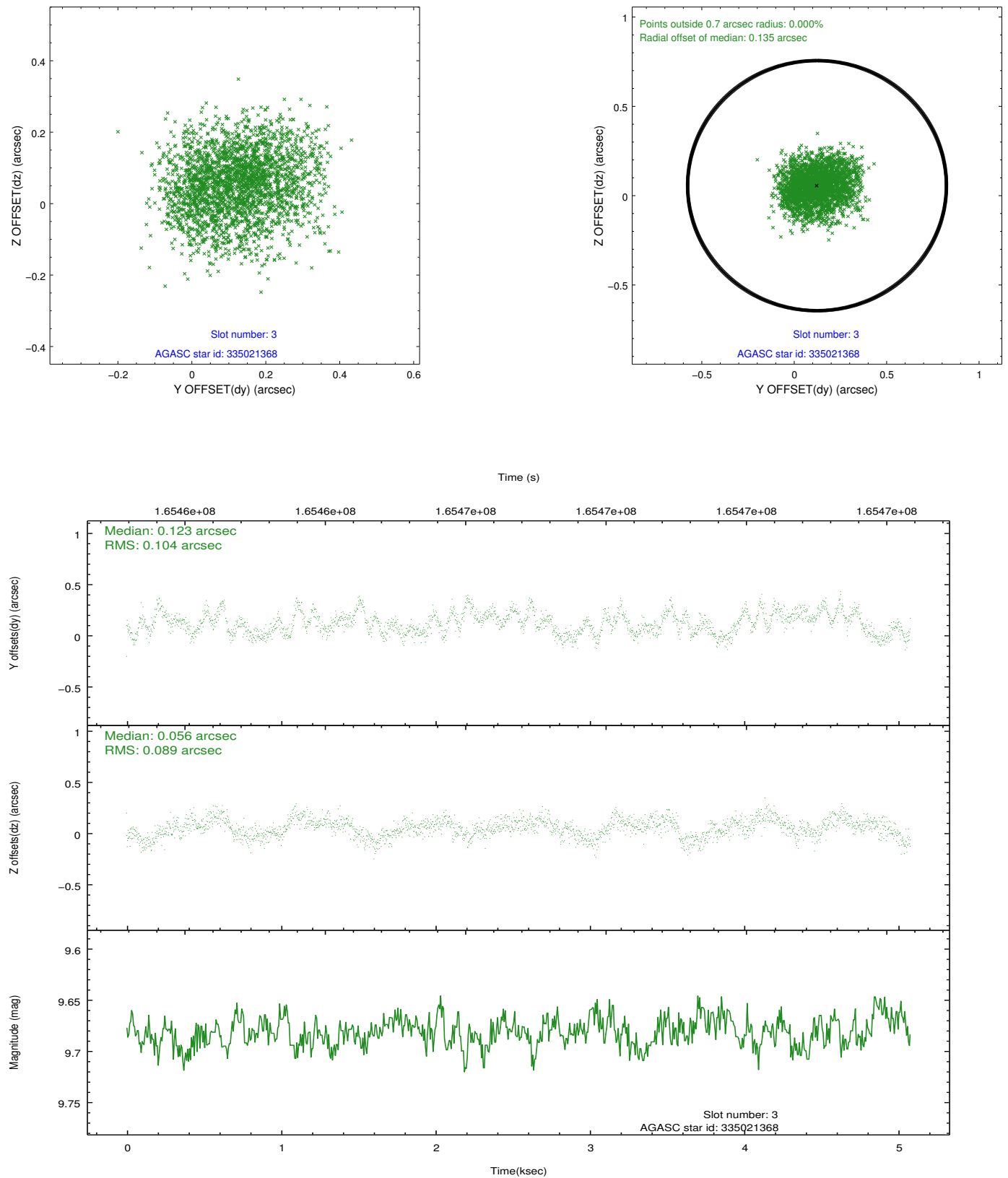


Slot Statistics

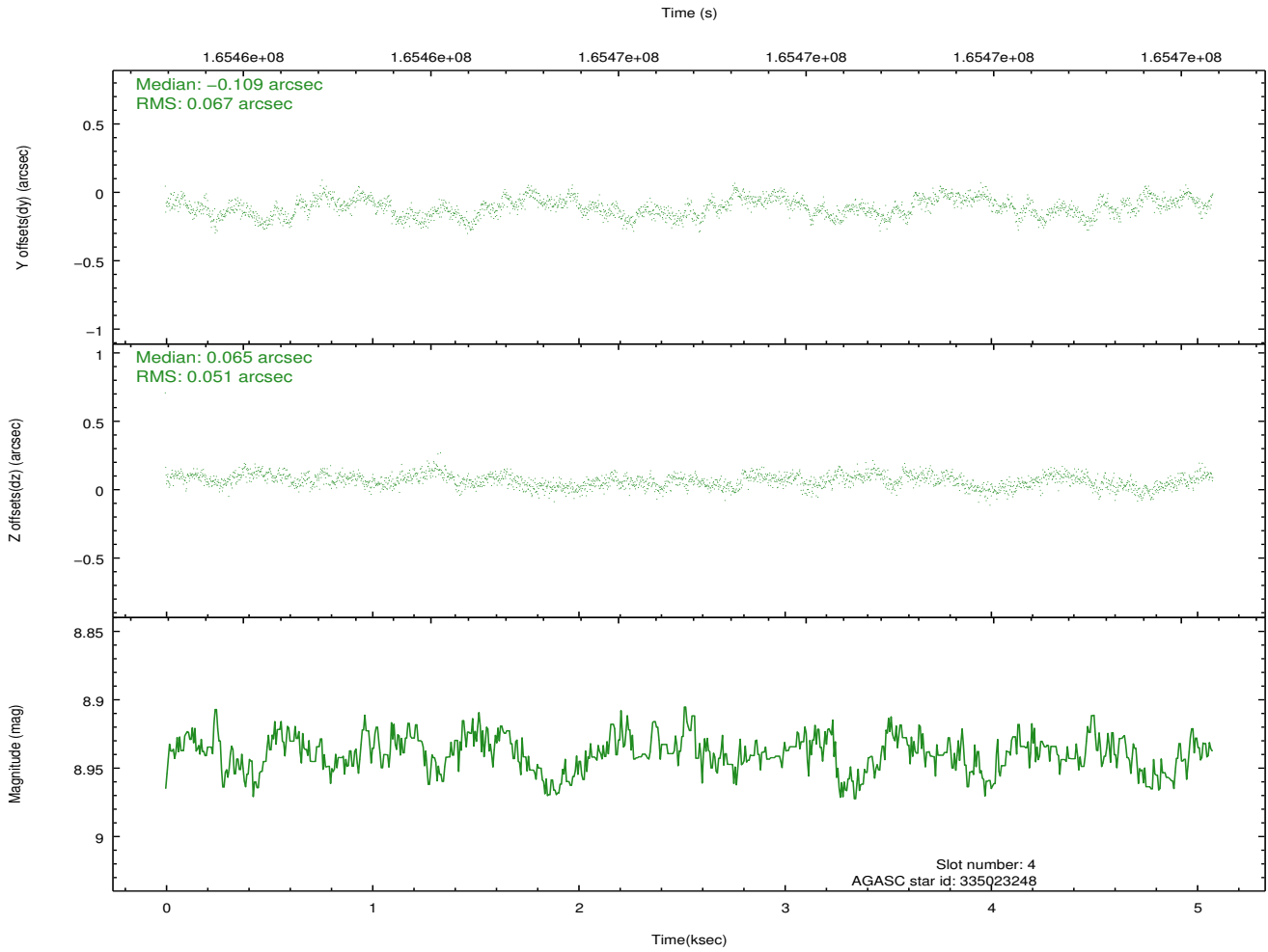
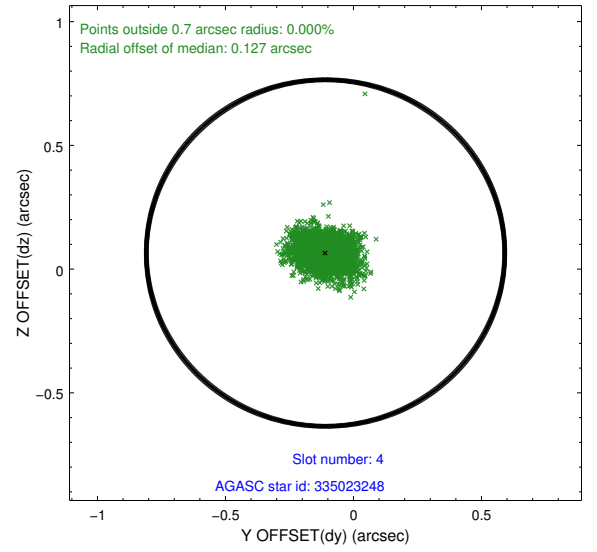
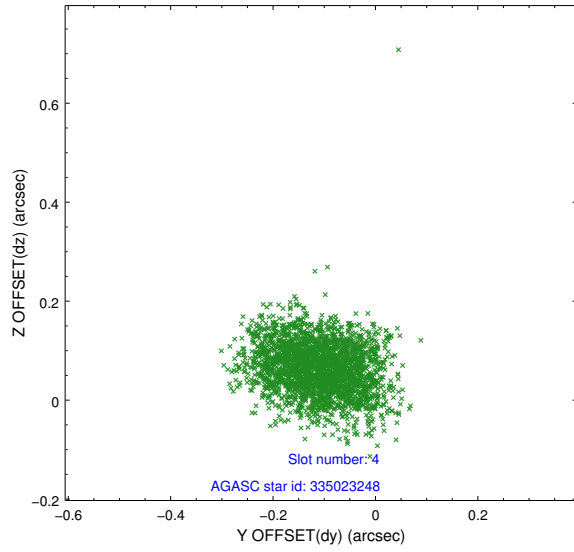
slot	status	id	mag	n_pts	med_dy	med_dz	dr1	dr2	ra	dec	mean_y	mean_z
0	FID	ACIS-I-1	7.25	1239	0.005	0.000	0.005	0.009	0.000000	0.000000	938.63	-829.59
1	FID	ACIS-I-5	7.23	1237	-0.066	0.050	0.005	0.009	0.000000	0.000000	-1808.85	1067.38
2	OMITTED		0.00	0	0.000	0.000	0.000	0.000	0.000000	0.000000	0.00	0.00
3	GUIDE	335021368	9.68	2477	0.123	0.056	0.150	0.227	217.529643	33.934817	-987.75	1705.23
4	GUIDE	335023248	8.94	2479	-0.109	0.065	0.090	0.146	217.634832	34.944512	1066.81	-1308.45
5	GUIDE	335025848	9.73	2478	0.073	-0.243	0.138	0.222	217.530531	33.778292	-1345.35	2139.62
6	GUIDE	335415168	9.80	2468	-0.003	-0.009	0.129	0.207	217.681296	35.301767	1774.79	-2390.82
7	GUIDE	335417968	9.40	2464	-0.074	0.147	0.106	0.165	217.358149	35.055285	1952.50	-1104.19

2.4 Star Slots

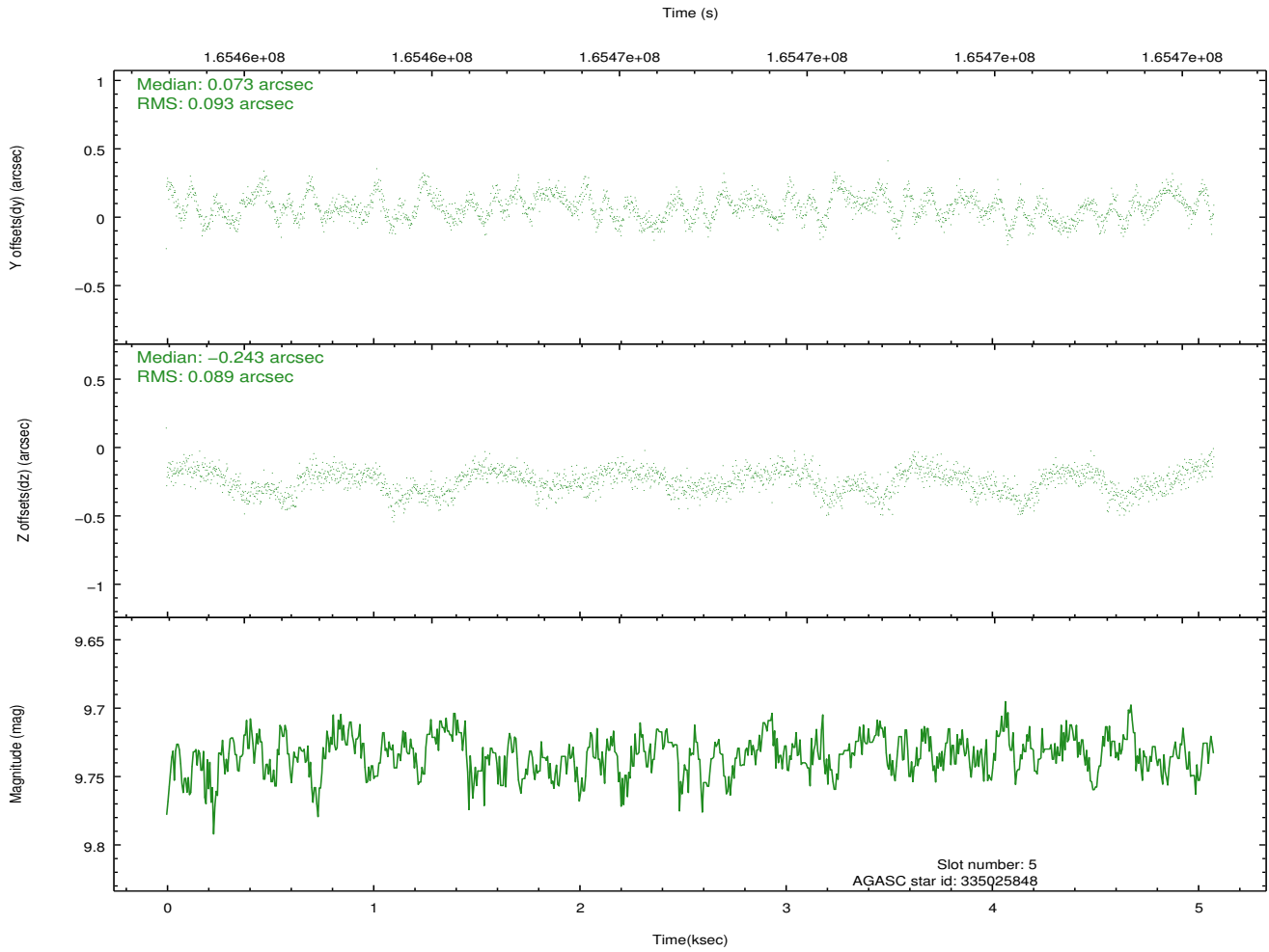
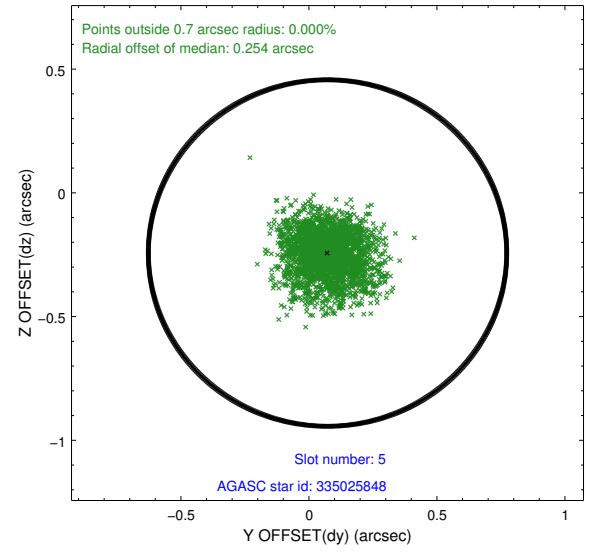
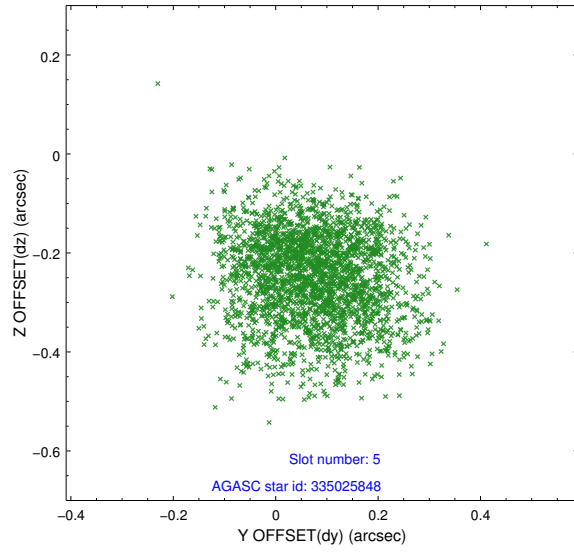
2.4.1 Slot 3



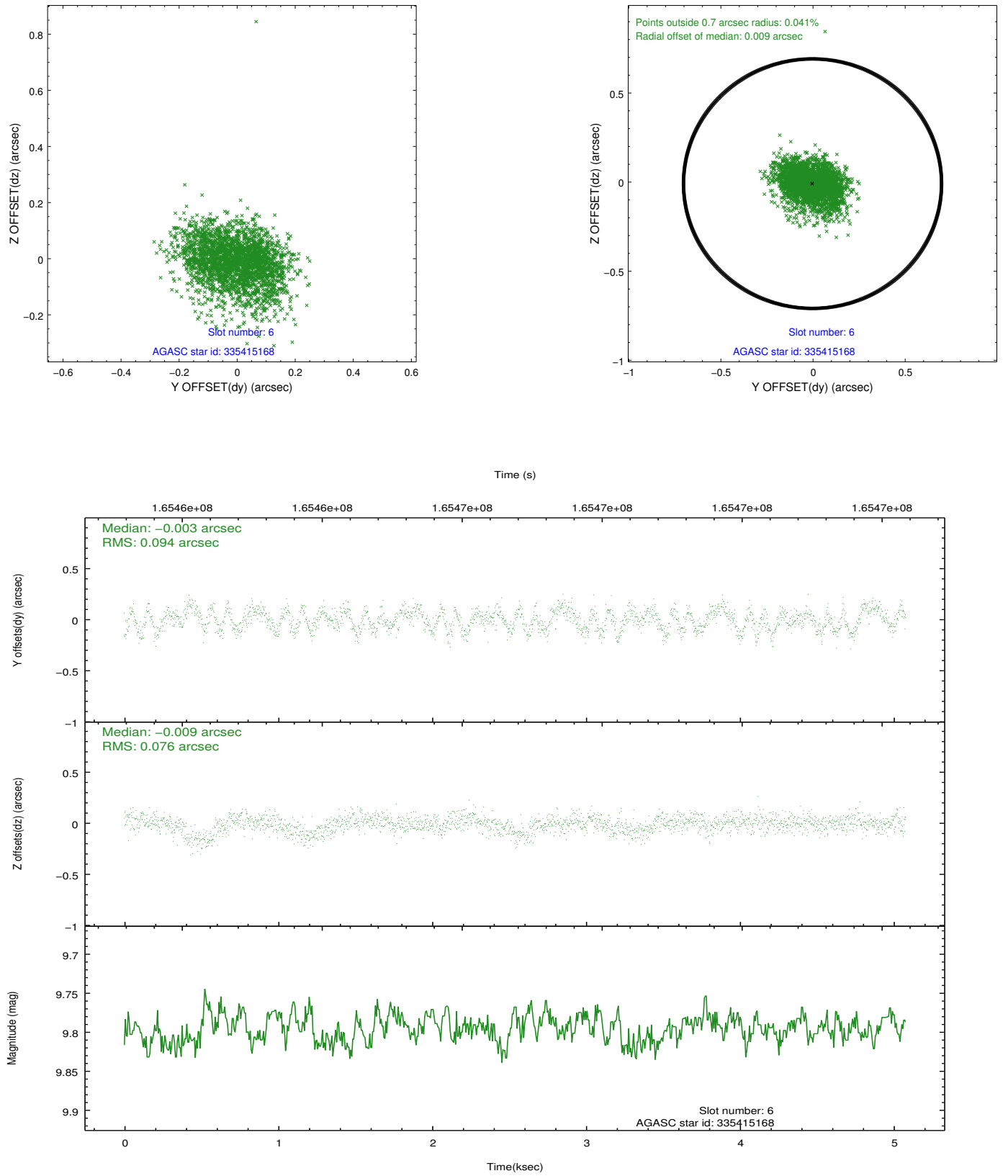
2.4.2 Slot 4



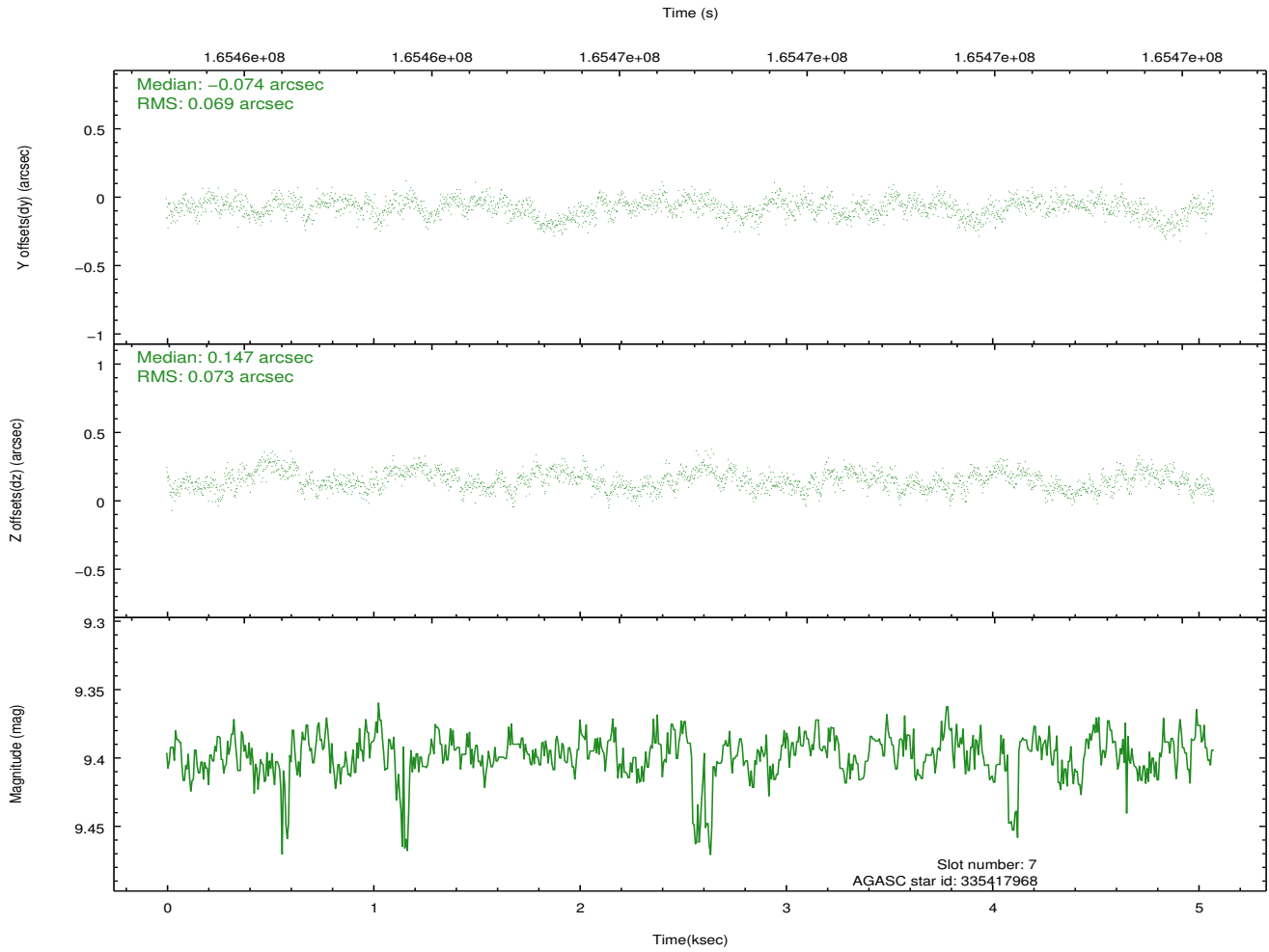
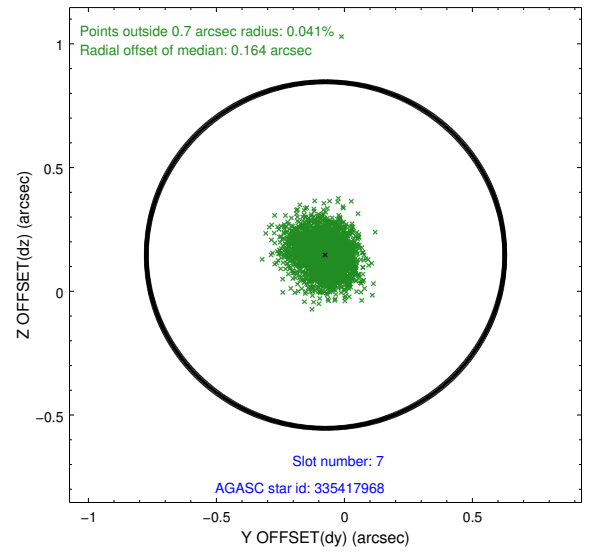
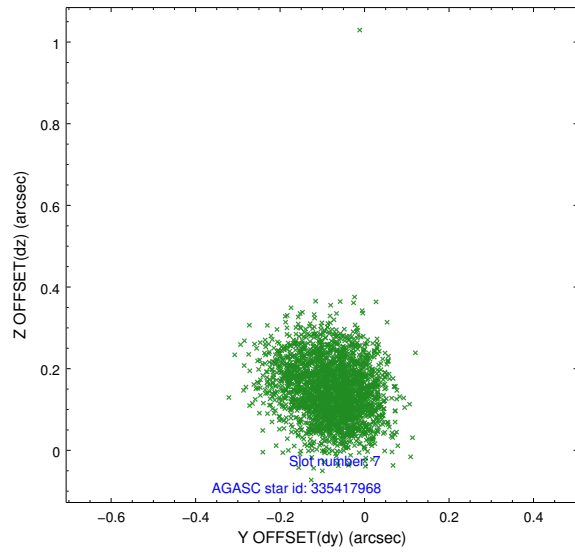
2.4.3 Slot 5



2.4.4 Slot 6

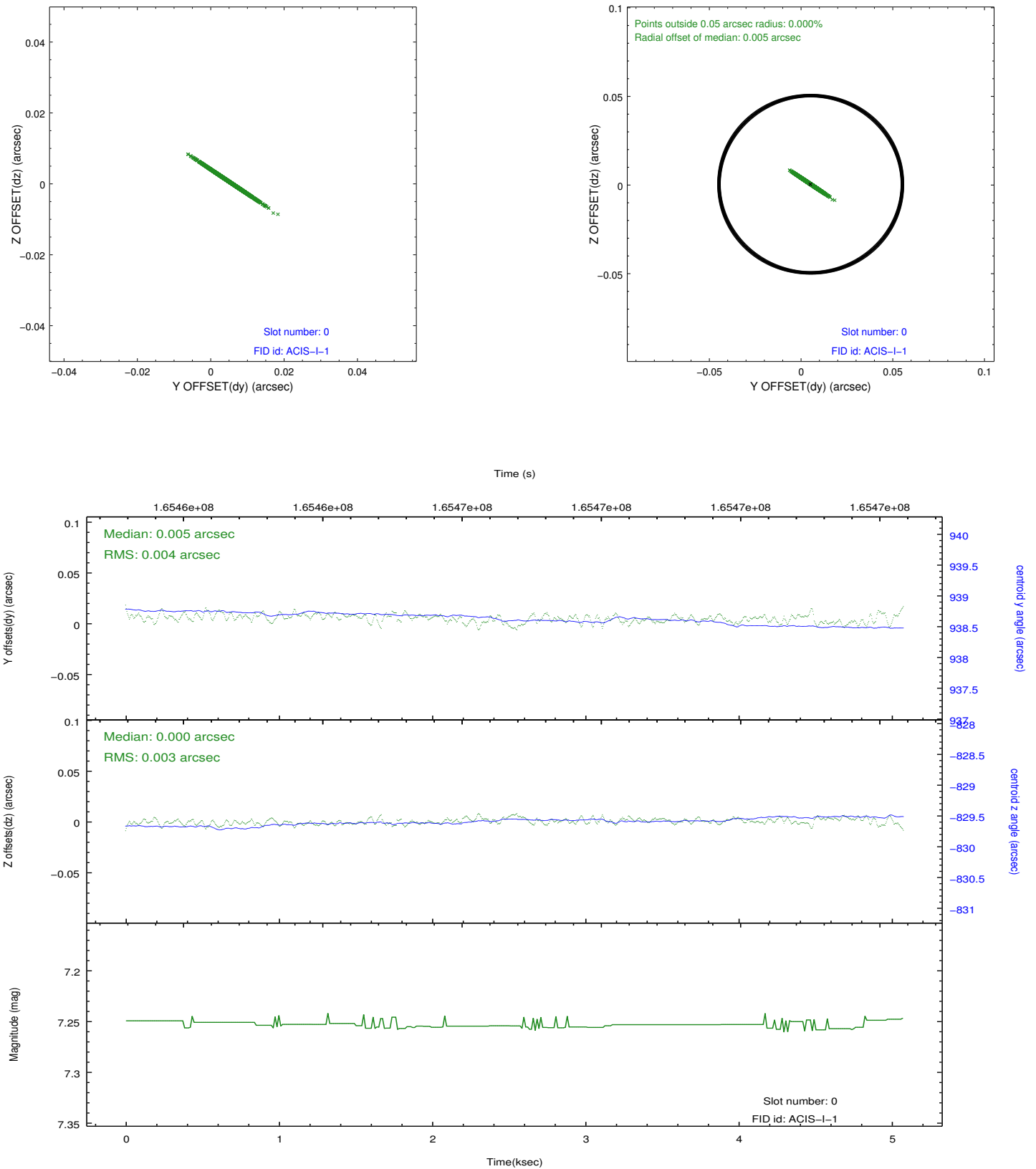


2.4.5 Slot 7

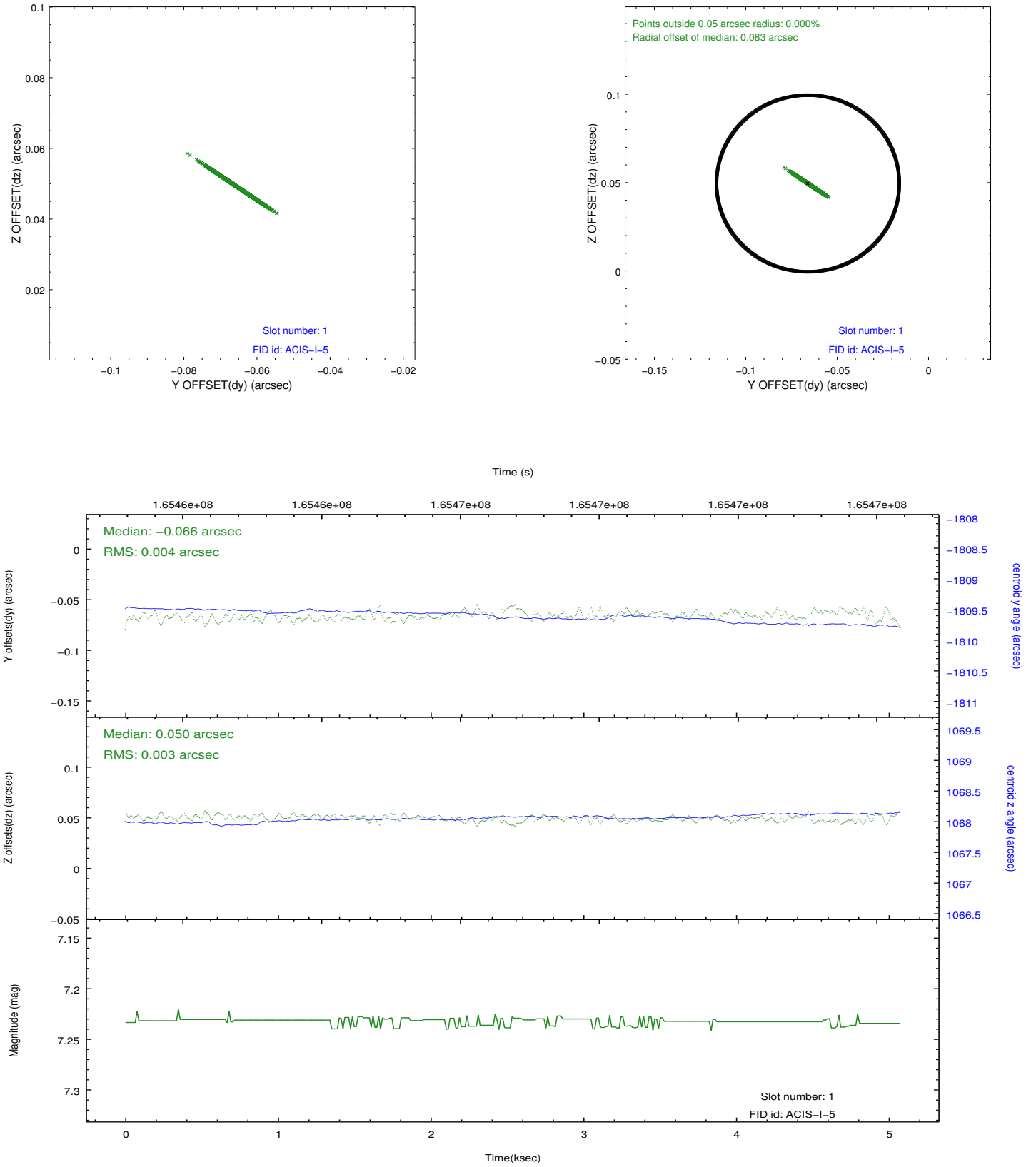


2.5 FID Slots

2.5.1 Slot 0



2.5.2 Slot 1



A Summary

A.1 Status

V&V Scientist	Beth Sundheim
V&V Date (YYYY-MM-DD)	2013.01.02
V&V Edition	1
V&V Disposition and Status	OK
V&V Charge Time	4.675

A.2 Comments

The fid light in slot 2 was removed from the aspect solution due to poor data quality. The aspect solution is improved by the removal of this fid light from the solution.