

# V&V Reference Report

## L2 ASCDS Version : 7.6.8

Observation 3649 - L2 Version 001  
Chandra X-Ray Center

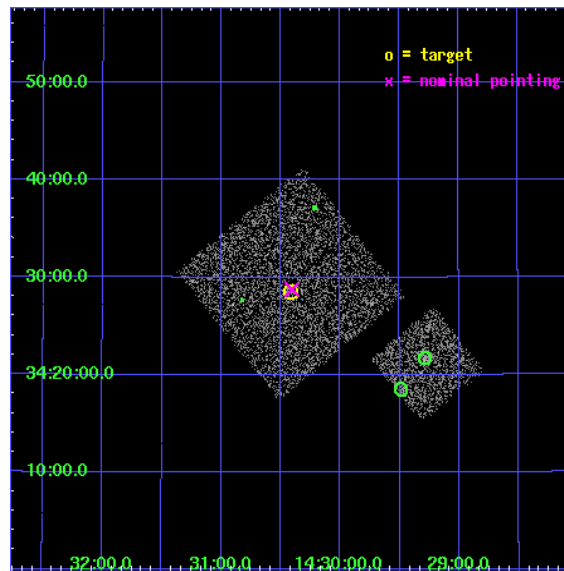
L2 Processing Date : Jul 31 2006

## Contents

<b>1</b>	<b>Front</b>	<b>2</b>
<b>2</b>	<b>OBI</b>	<b>3</b>
2.1	OBI . . . . .	3
2.1.1	Images . . . . .	3
2.1.2	Bias . . . . .	3
2.1.3	Parameters . . . . .	4
2.1.4	Events . . . . .	4
2.2	Compared Parameters . . . . .	5
2.3	Aspect . . . . .	6
2.4	Star Slots . . . . .	9
2.4.1	Slot 3 . . . . .	9
2.4.2	Slot 4 . . . . .	10
2.4.3	Slot 5 . . . . .	11
2.4.4	Slot 6 . . . . .	12
2.4.5	Slot 7 . . . . .	13
2.5	FID Slots . . . . .	14
2.5.1	Slot 0 . . . . .	14
2.5.2	Slot 1 . . . . .	15
<b>3</b>	<b>Point Sources</b>	<b>16</b>
<b>A</b>	<b>Summary</b>	<b>17</b>
A.1	Status . . . . .	17
A.2	Comments . . . . .	17

# 1 Front

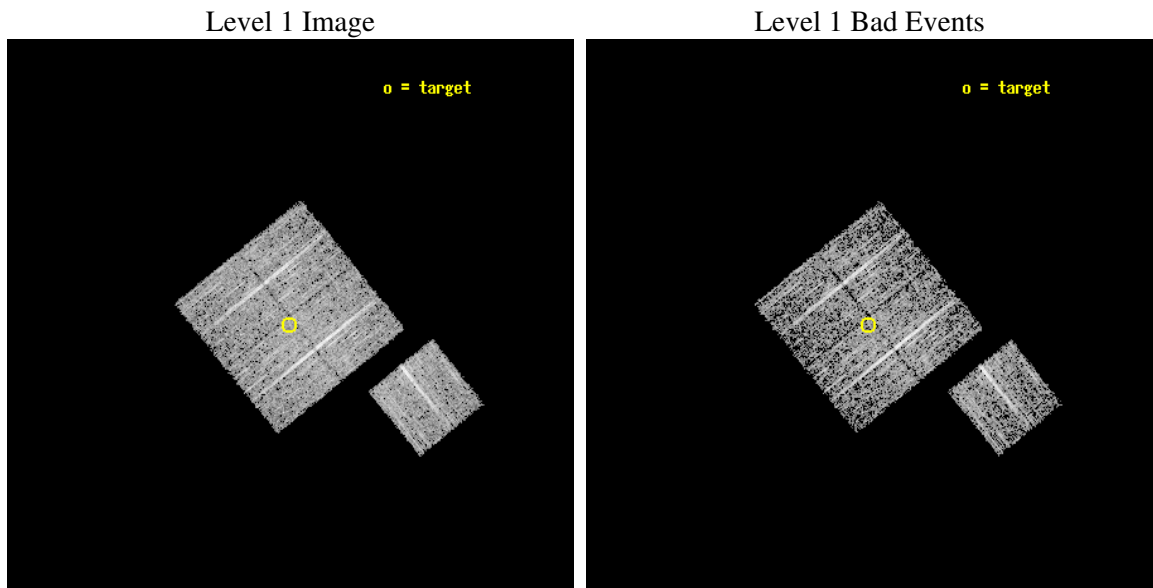
seq_num	900249
obs_id	3649
title	CHANDRA LARGE SCALE SURVEY OF THE NOAO BOOTES DEEP FIELD
observer	Dr. Stephen Murray
object	NOAO FIELD F10
dtcycle	0
cycle	P
ra_targ	217.604097
dec_targ	34.475388
ra_nom	217.60148785908
dec_nom	34.479468613369
roll_nom	141.0101818101
revision	3
ontime	4674.7999910116
livetime	4613.7202875914
ontime0	4671.6590107679
ontime1	4671.6590107679
ontime2	4668.5180405378
ontime3	4674.7999910116
ontime6	4671.6590107679
l2events	9355



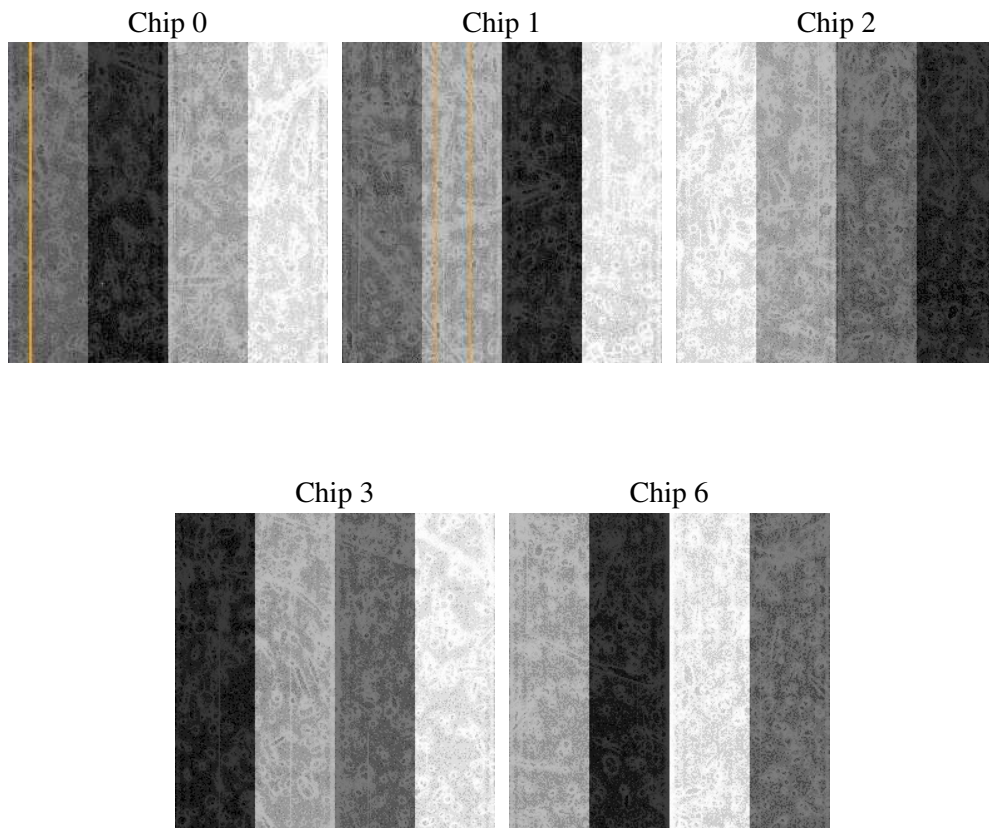
## 2 OBI

### 2.1 OBI

#### 2.1.1 Images



#### 2.1.2 Bias



### 2.1.3 Parameters

obi_num	1
ascdsver	7.6.8
caldsver	3.2.2
date	2006-07-31T12:53:05
revision	3

sched_exp_time	4900.000000
ontime	4676.9590971172
ontime0	4673.8181168735
ontime1	4673.8181168735
ontime2	4670.6771466434
ontime3	4676.9590971172
ontime6	4673.8181168735
l1events	117687

### 2.1.4 Events

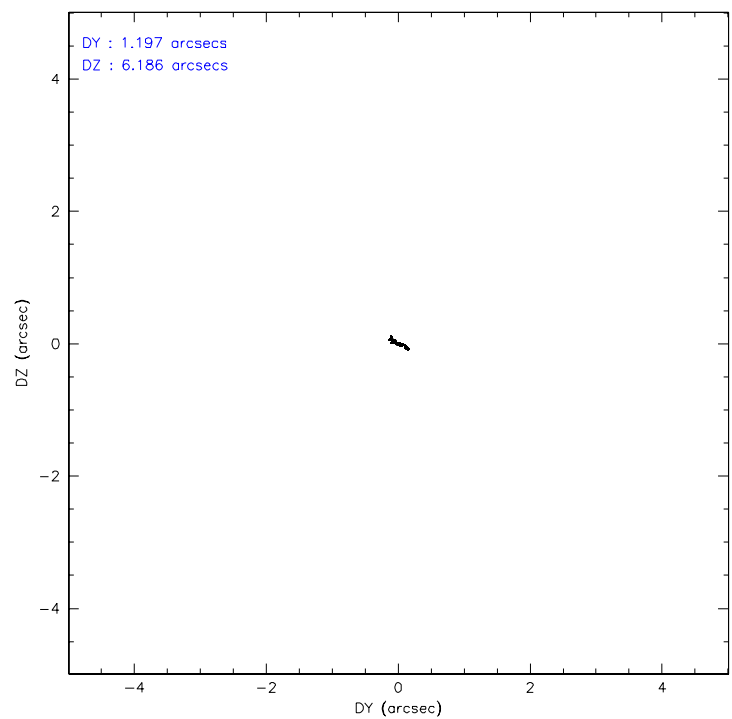
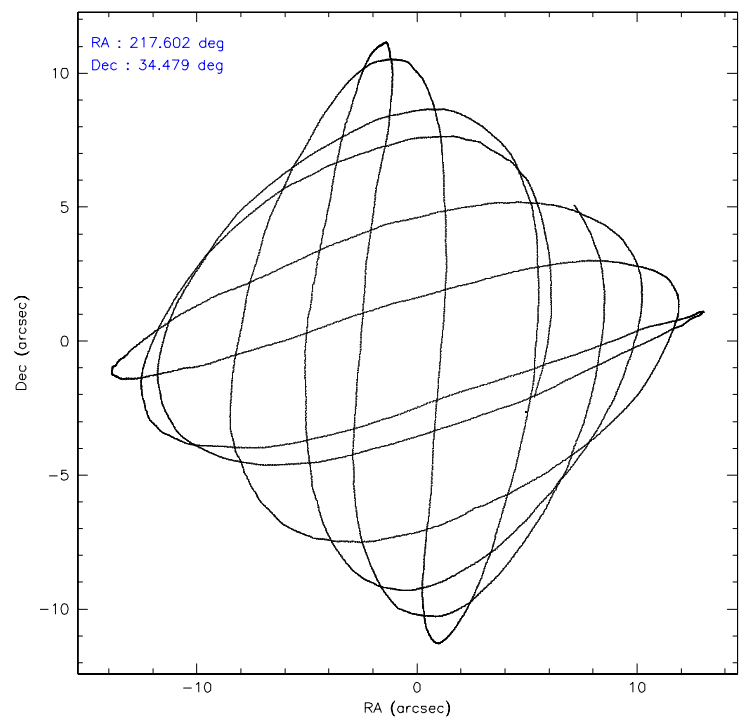
	ccd 0	ccd 1	ccd 2	ccd 3	ccd 6
level 1 events	23025	21141	25539	23710	24272
rejected events	20720	18748	23339	21605	21845
rejected %	89%	88%	91%	91%	90%

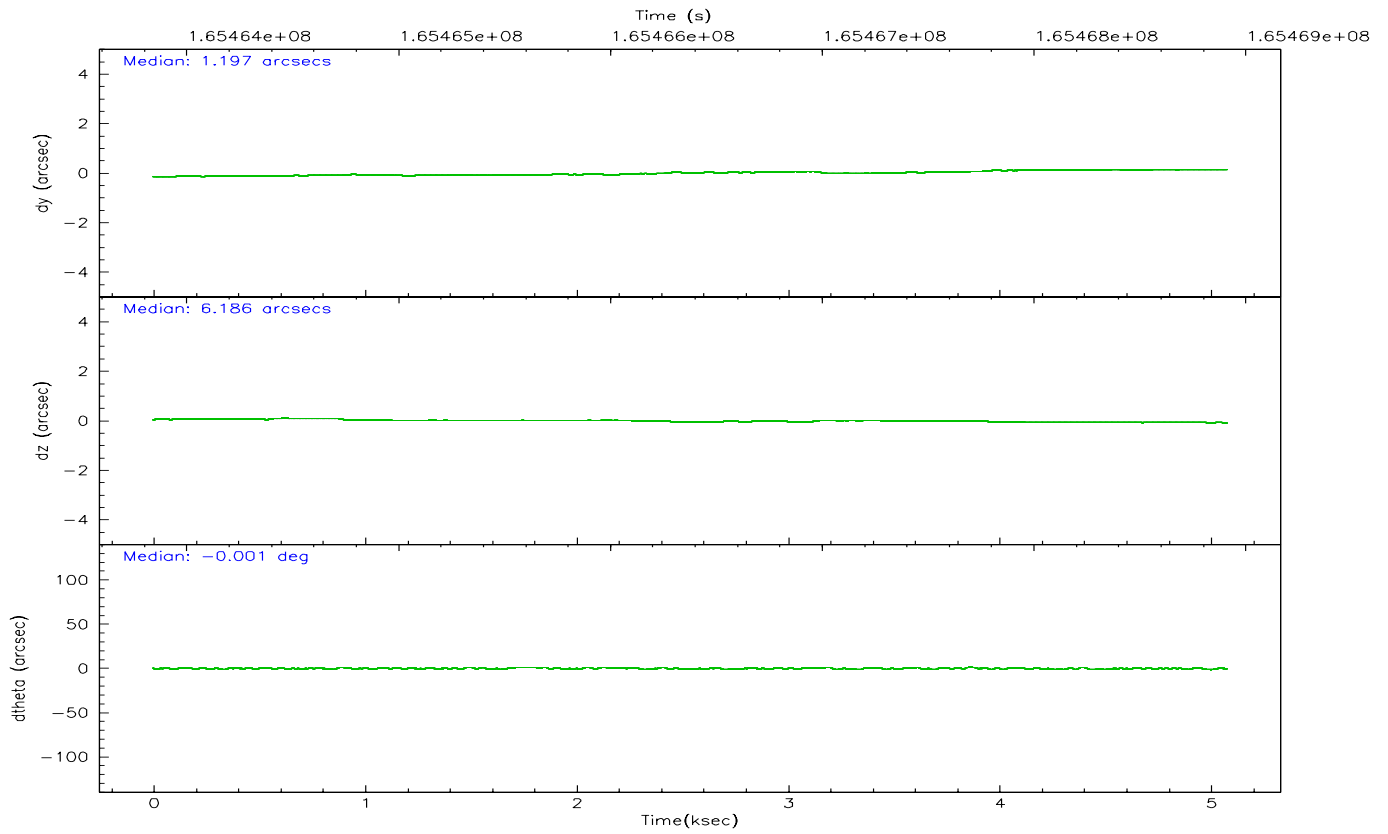
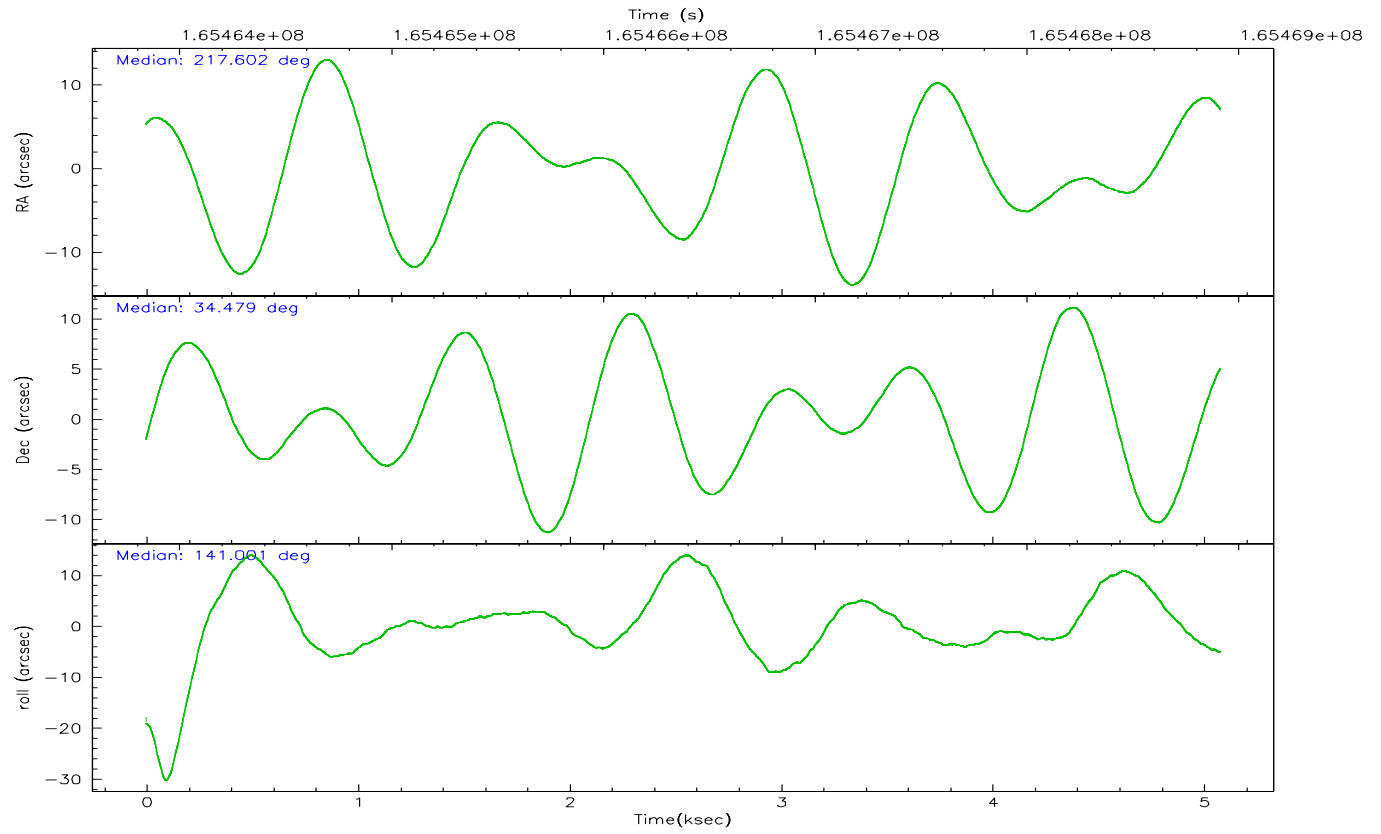
	ccd 0	ccd 1	ccd 2	ccd 3	ccd 6
grade 0 events	800	864	855	719	937
	3%	4%	3%	3%	3%
grade 1 events	11	7	12	13	15
	0%	0%	0%	0%	0%
grade 2 events	576	498	505	425	468
	2%	2%	1%	1%	1%
grade 3 events	255	282	222	251	265
	1%	1%	0%	1%	1%
grade 4 events	269	285	253	282	278
	1%	1%	0%	1%	1%
grade 5 events	660	707	632	730	740
	2%	3%	2%	3%	3%
grade 6 events	405	466	366	429	479
	1%	2%	1%	1%	1%
grade 7 events	20049	18032	22694	20861	21090
	87%	85%	88%	87%	86%

## 2.2 Compared Parameters

Parameter	Planned	Actual	Parameter	Planned	Actual
Instrument	ACIS	ACIS	Obspar format version number	6	6
Detector	ACIS-01236	ACIS-01236	Obspar file type	PREDICTED	ACTUAL
Grating	NONE	NONE	Obspar update status	NONE	UPDATED
Data mode	VFAINT	VFAINT	On-chip summing requested	N	N
Observation mode	POINTING	POINTING	Subarray requested	NONE	NONE
Pointing RA	217.634291	217.6014878590786	Alternating exposures requested	N	N
Pointing Dec	34.475306	34.47946861336946	Primary exposure time	0.000000	3.1
Pointing Roll	140.782912	141.0101818100998			
SIM focus pos (mm)	-0.782348	-0.7809083437167272			
SIM defocus (mm)	0	0.001439871863259334			
SIM translation stage pos (mm)	-233.592463	-233.5874344608287			
SIM translation stage offset (mm)	0	-0.005018542100998502			
Observation start time	165464014.184000	165463637.96552			
Observation start date	2003-03-31T02:12:30	2003-03-31T02:07:17			
Observation end time	165468914.184000	165469047.91575			
Observation end date	2003-03-31T03:34:10	2003-03-31T03:37:27			
Read mode	TIMED	TIMED			

## 2.3 Aspect





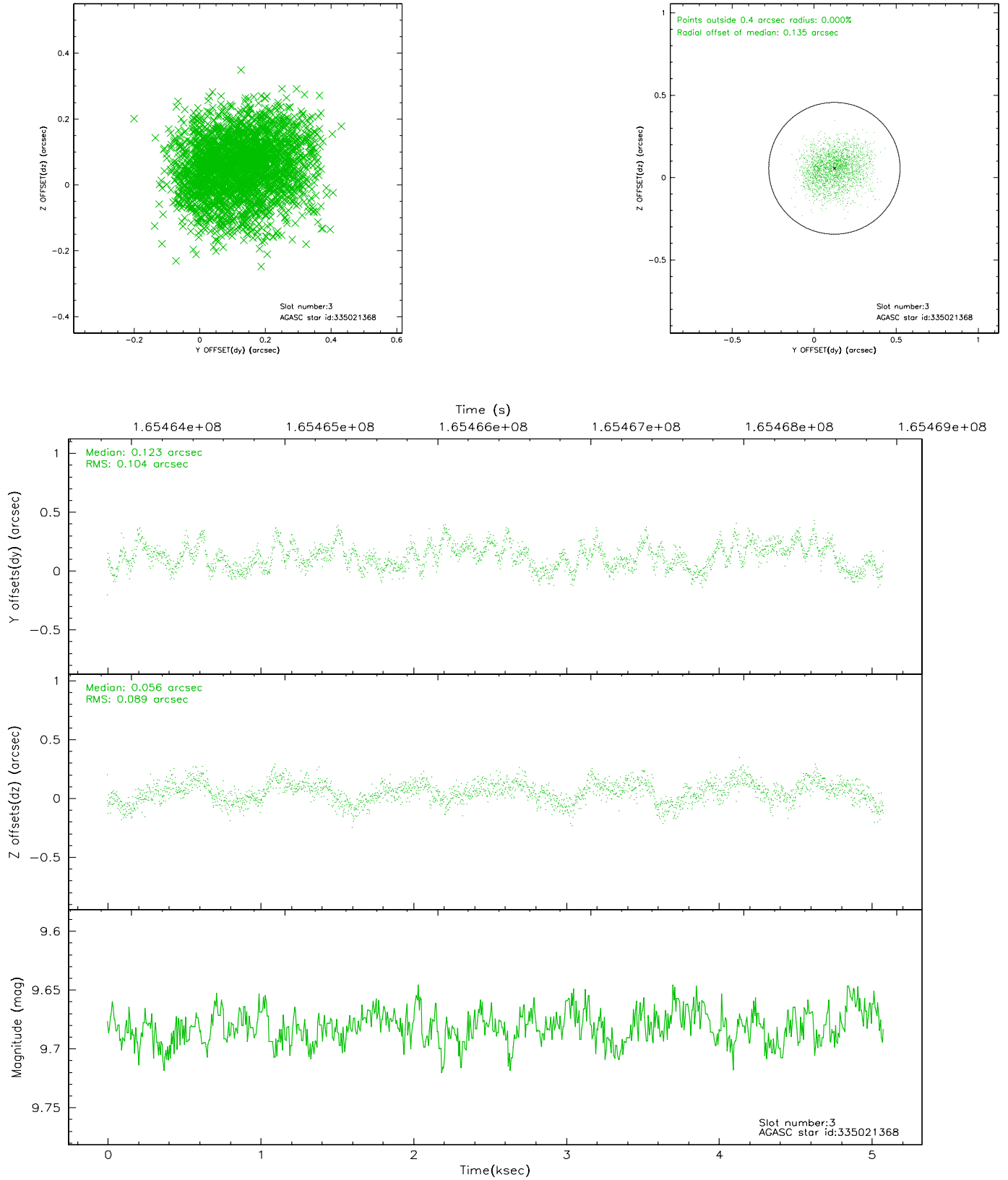
### Slot Statistics

slot	status	id	mag	n_pts	med_dy	med_dz	dr1	dr2	ra	dec	mean_y	mean_z
0	FID	ACIS-I-1	7.25	1239	-0.020	0.018	0.004	0.008	0.000000	0.000000	938.62	-829.55
1	FID	ACIS-I-5	7.23	1237	-0.041	0.032	0.004	0.008	0.000000	0.000000	-1808.82	1067.39
2	OMITTED		0.00	0	0.000	0.000	0.000	0.000	0.000000	0.000000	0.00	0.00
3	GUIDE	335021368	9.68	2477	0.123	0.056	0.150	0.227	217.529643	33.934817	-987.75	1705.23
4	GUIDE	335023248	8.94	2479	-0.109	0.065	0.090	0.146	217.634832	34.944512	1066.81	-1308.45
5	GUIDE	335025848	9.73	2478	0.073	-0.243	0.138	0.222	217.530531	33.778292	-1345.35	2139.62
6	GUIDE	335415168	9.80	2468	-0.003	-0.009	0.129	0.207	217.681296	35.301767	1774.79	-2390.82
7	GUIDE	335417968	9.40	2464	-0.074	0.147	0.106	0.165	217.358149	35.055285	1952.50	-1104.19

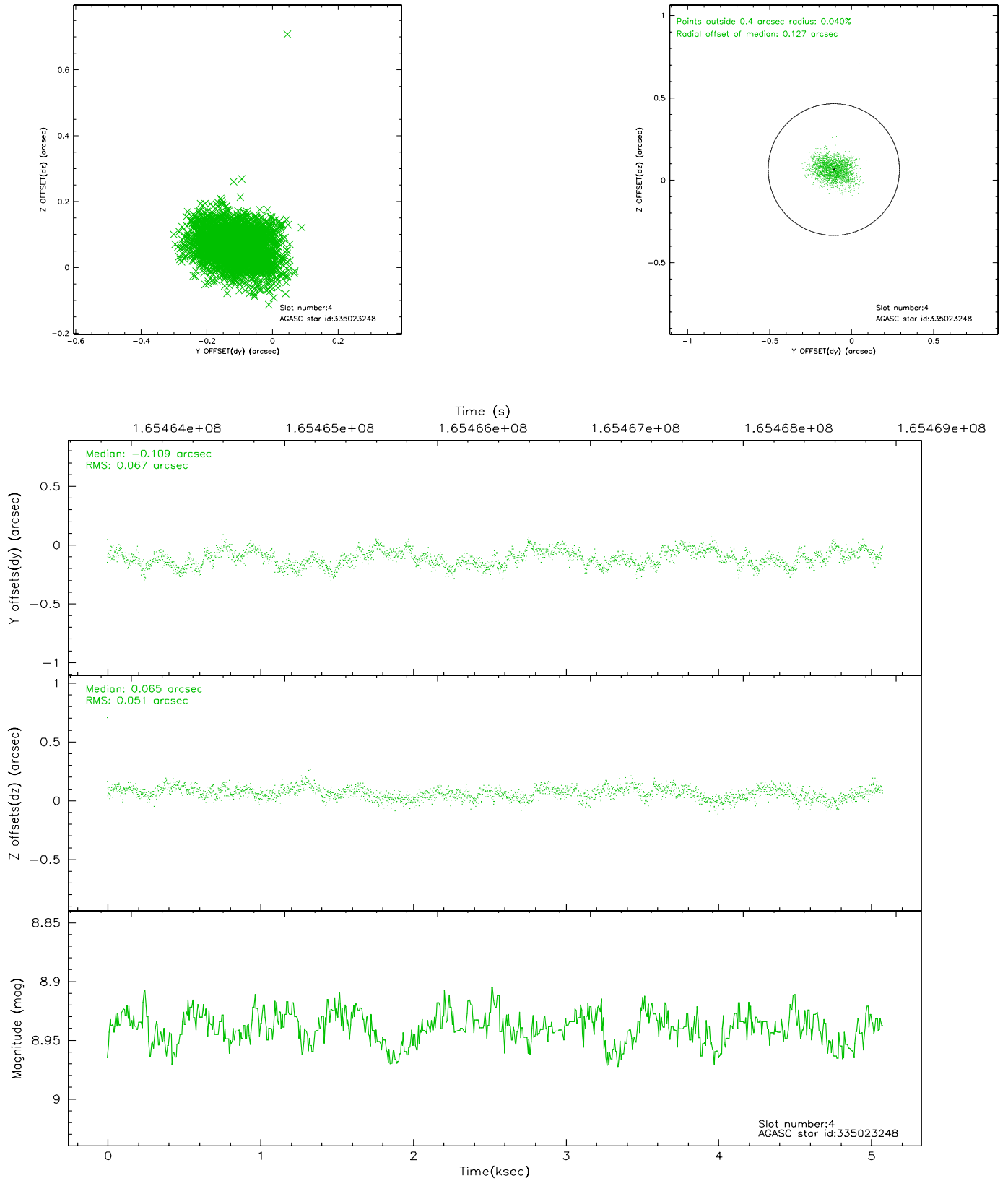


## 2.4 Star Slots

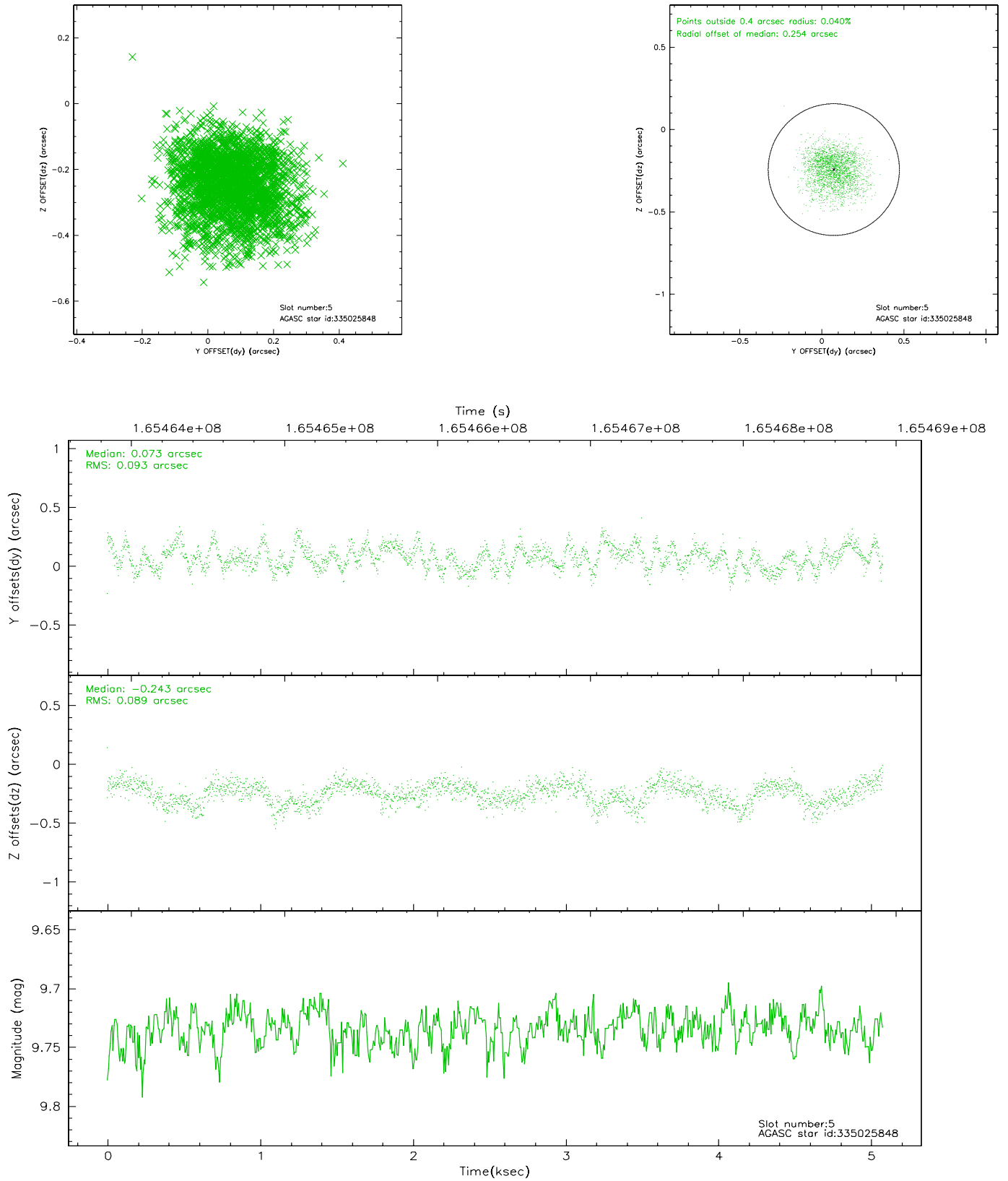
### 2.4.1 Slot 3



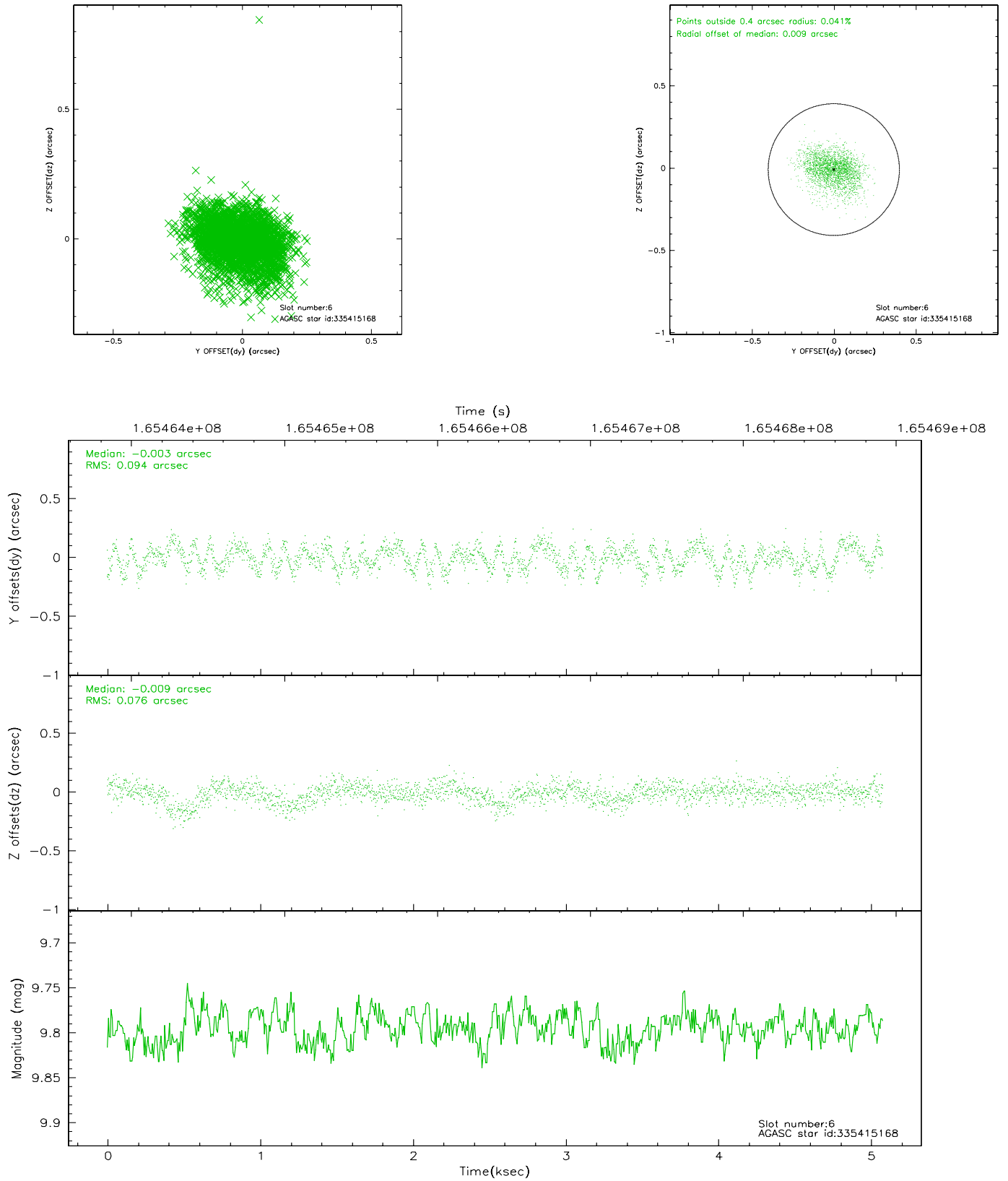
## 2.4.2 Slot 4



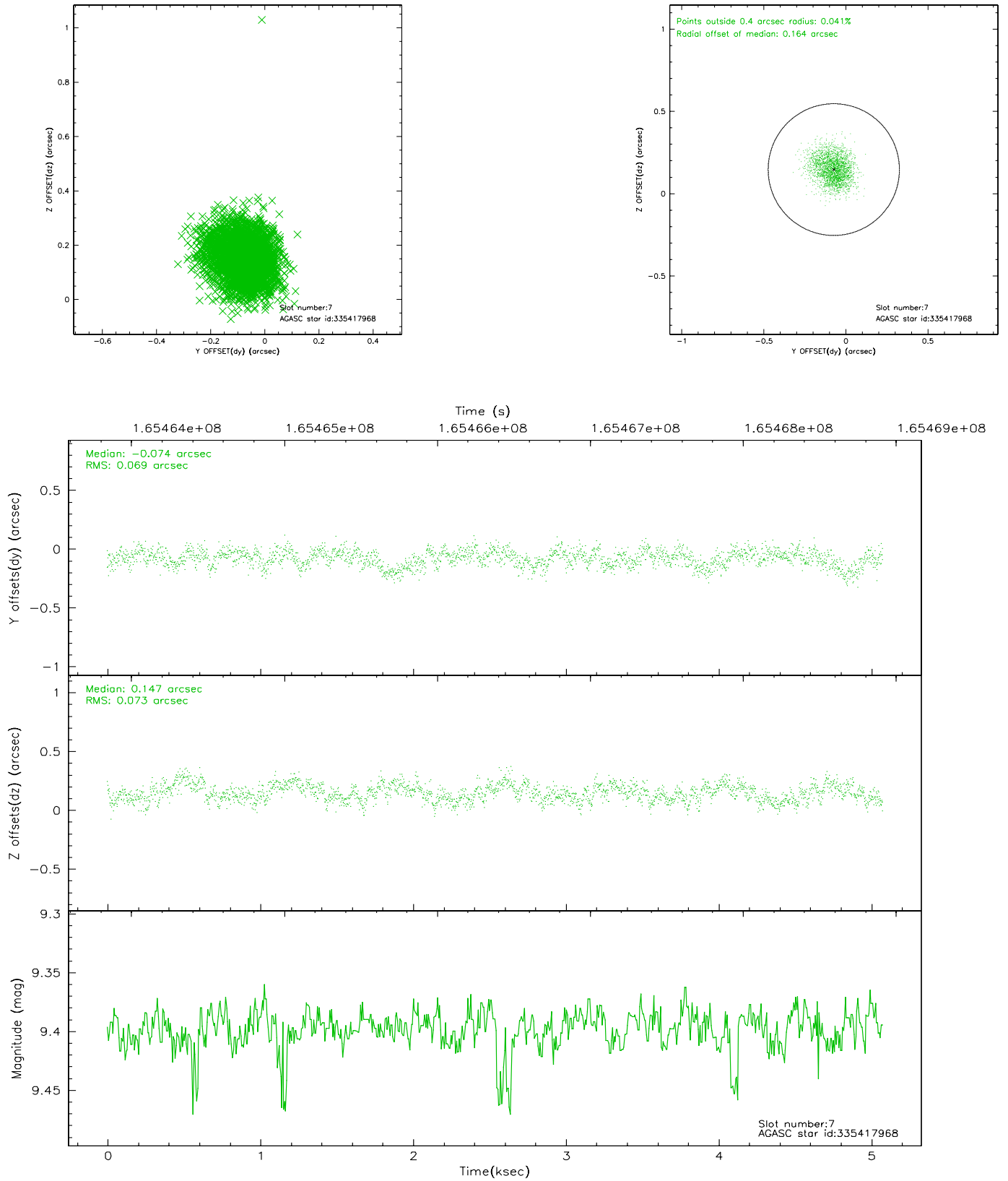
### 2.4.3 Slot 5



## 2.4.4 Slot 6

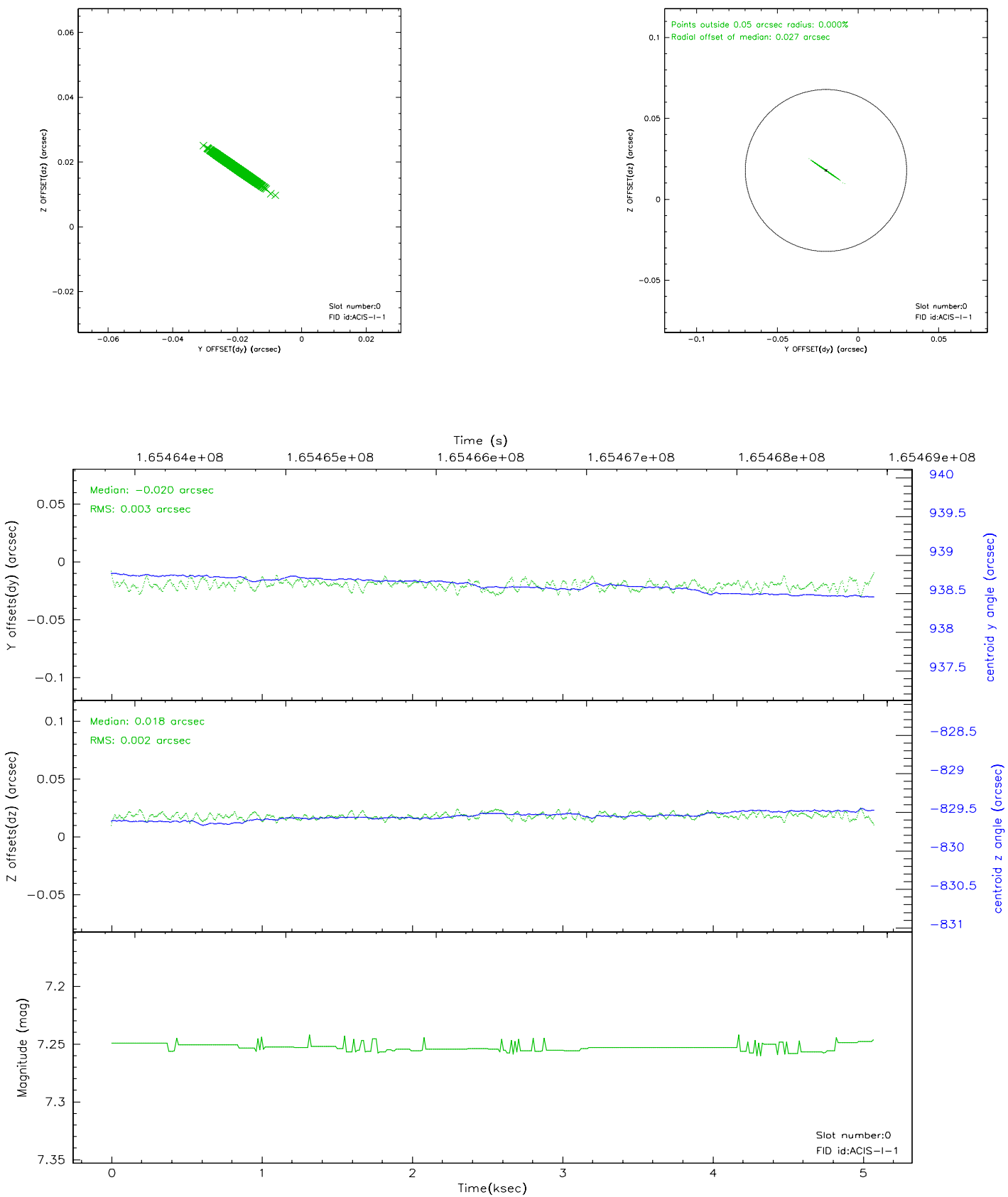


## 2.4.5 Slot 7

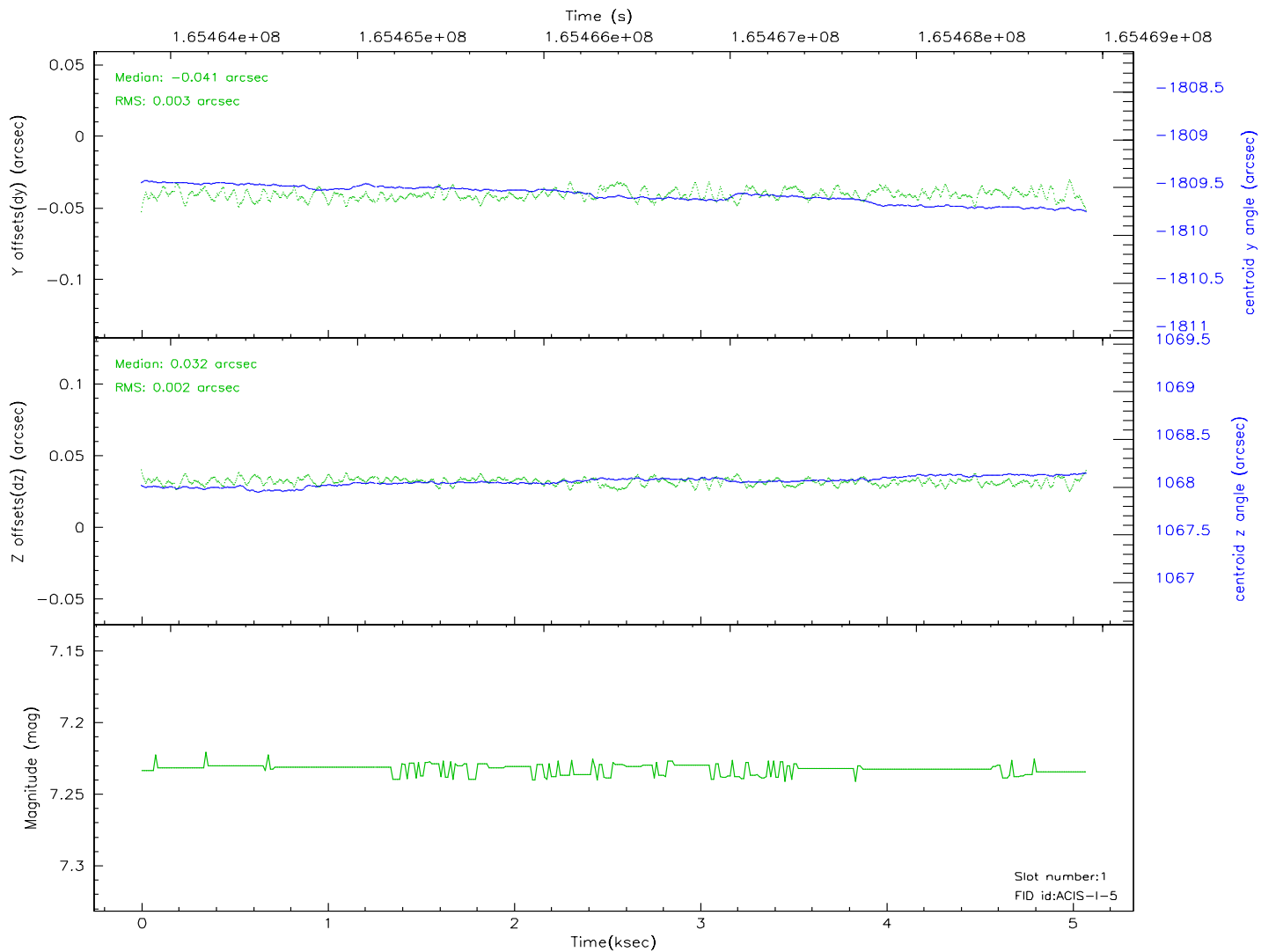
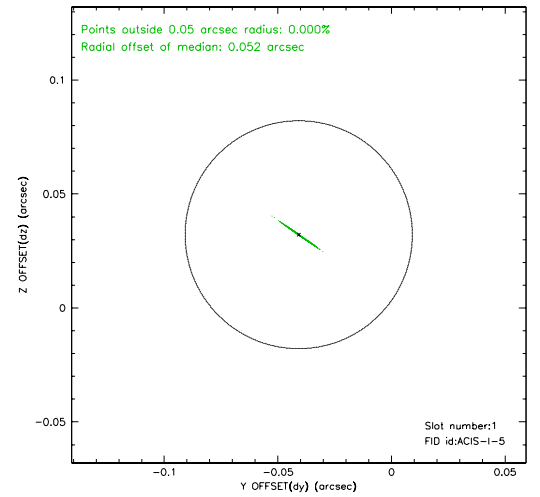
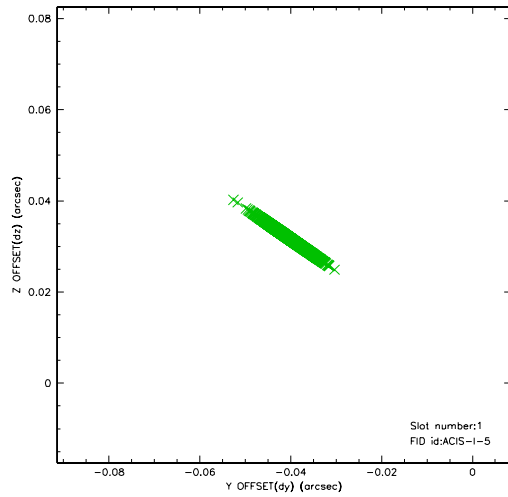


## 2.5 FID Slots

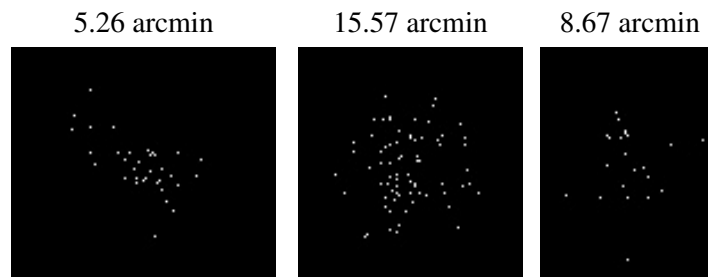
### 2.5.1 Slot 0



## 2.5.2 Slot 1



### 3 Point Sources





# A Summary

## A.1 Status

V&V Scientist	Beth Sundheim
V&V Date (YYYY-MM-DD)	2010.10.01
V&V Edition	2
V&V Disposition and Status	OK
V&V Charge Time	4.675

## A.2 Comments

The guide star in slot 2 was manually excluded from the processing due to poor data quality.