

V&V Reference Report

L2 ASCDS Version : 8.4.5

Observation 3640 - L2 Version 4
Chandra X-Ray Center

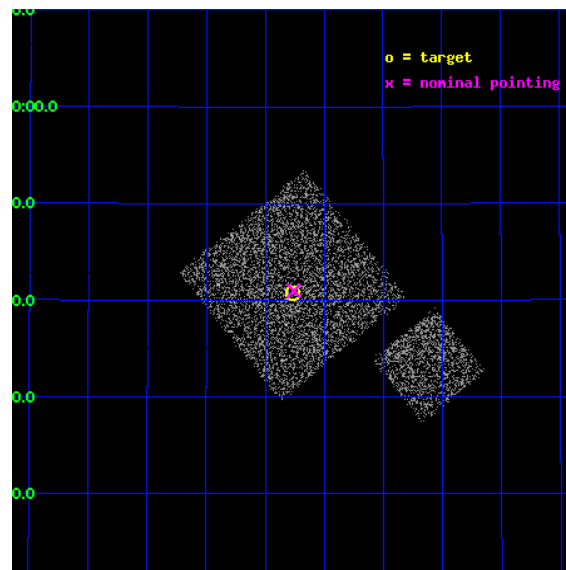
L2 Processing Date : Oct 25 2012

Contents

1	Front	2
2	OBI	3
2.1	OBI	3
2.1.1	Images	3
2.1.2	Bias	3
2.1.3	Parameters	4
2.1.4	Events	4
2.2	Compared Parameters	5
2.3	Aspect	6
2.4	Star Slots	9
2.4.1	Slot 3	9
2.4.2	Slot 4	10
2.4.3	Slot 5	11
2.4.4	Slot 6	12
2.4.5	Slot 7	13
2.5	FID Slots	14
2.5.1	Slot 0	14
2.5.2	Slot 1	15
2.5.3	Slot 2	16
A	Summary	17
A.1	Status	17
A.2	Comments	17

1 Front

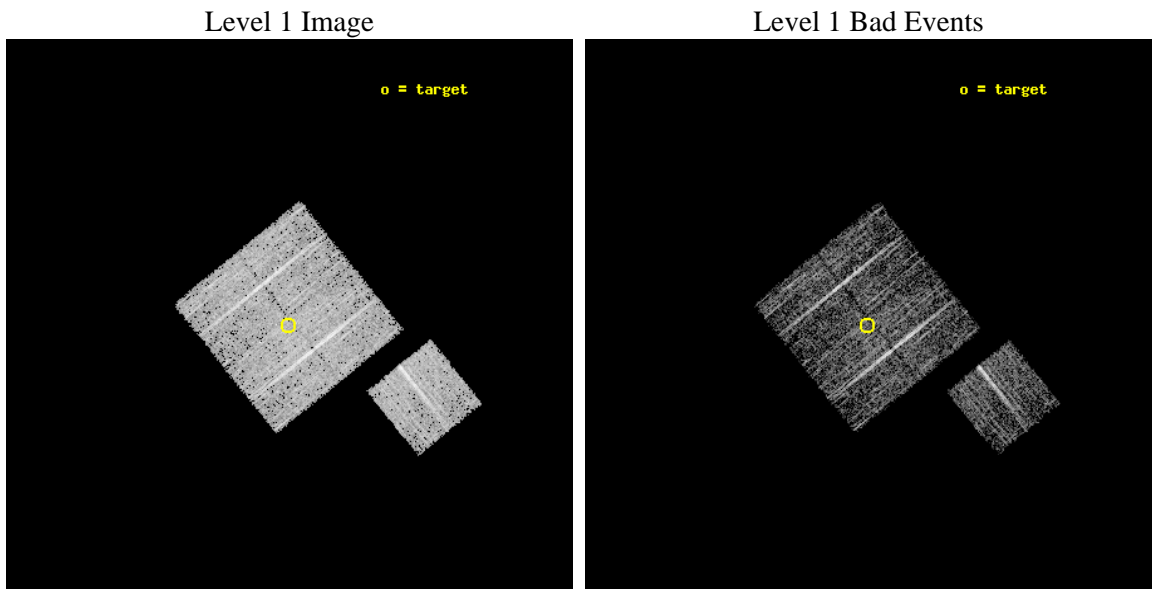
seq_num	900240	Sequence number
obs_id	3640	Observation id
title	CHANDRA LARGE SCALE SURVEY OF THE NOAO BOOTES DEEP FIELD	Proposal
observer	Dr. Stephen Murray	Principal investigator
object	NOAO FIELD F41	Source name
dtcycle	0	
cycle	P	events from which exps? Prim/Second/Both
ra_targ	217.816997	Observer's specified target RA [deg]
dec_targ	34.679082	Observer's specified target Dec [deg]
ra_nom	217.81435685618	Nominal RA [deg]
dec_nom	34.683113625117	Nominal Dec [deg]
roll_nom	141.0101604901	Nominal Roll [deg]
revision	4	Processing version of data
ontime	4674.1715164483	Sum of GTIs [s]
livetime	4613.1000245109	Livetime [s]
ontime0	4667.7664060295	Sum of GTIs [s]
ontime1	4674.0894364417	Sum of GTIs [s]
ontime2	4674.130476445	Sum of GTIs [s]
ontime3	4674.1715164483	Sum of GTIs [s]
ontime6	4674.0073564351	Sum of GTIs [s]
l2events	9389	Number of level 2 events



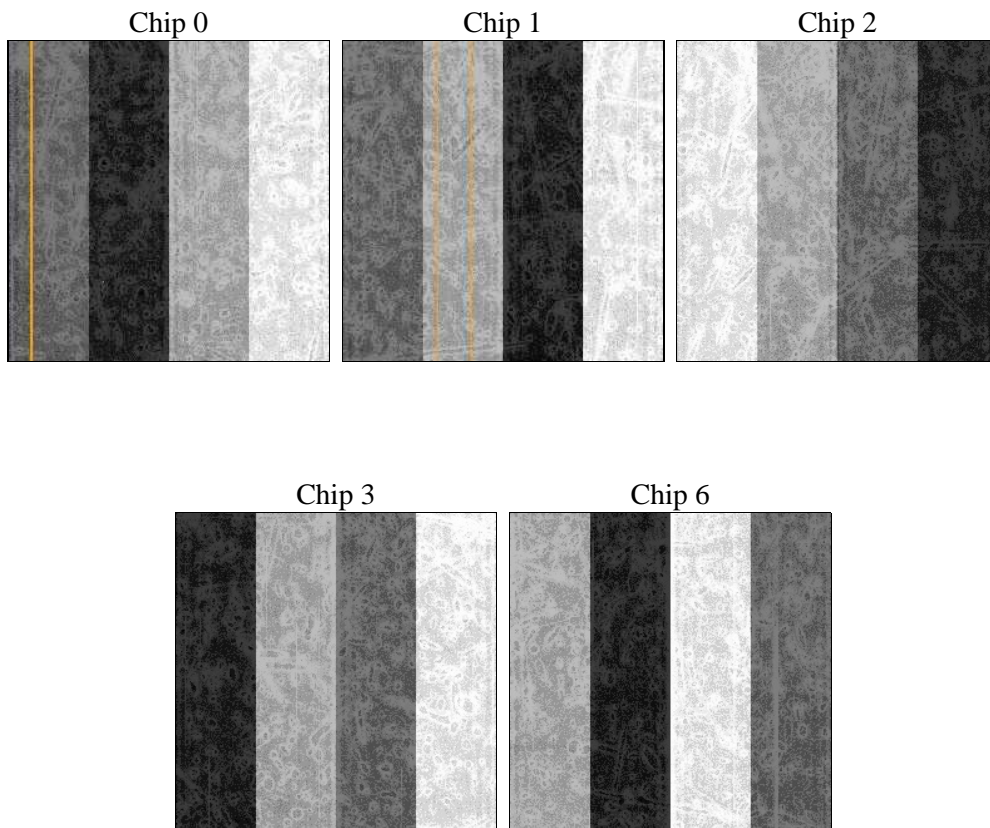
2 OBI

2.1 OBI

2.1.1 Images



2.1.2 Bias



2.1.3 Parameters

obi_num	1	Obi number	sched_exp_time	4900.000000	[s] Scheduled observation exposure time
ascdsver	8.4.5	Processing system revision	ontime	4674.1715164483	Sum of GTIs [s]
caldsver	4.5.2	 	ontime0	4667.7664060295	Sum of GTIs [s]
date	2012-10-25T15:32:12	Date and time of file creation	ontime1	4674.0894364417	Sum of GTIs [s]
revision	4	Processing version of data	ontime2	4674.130476445	Sum of GTIs [s]
			ontime3	4674.1715164483	Sum of GTIs [s]
			ontime6	4674.0073564351	Sum of GTIs [s]
			l1events	115191	Number of level 1 events

2.1.4 Events

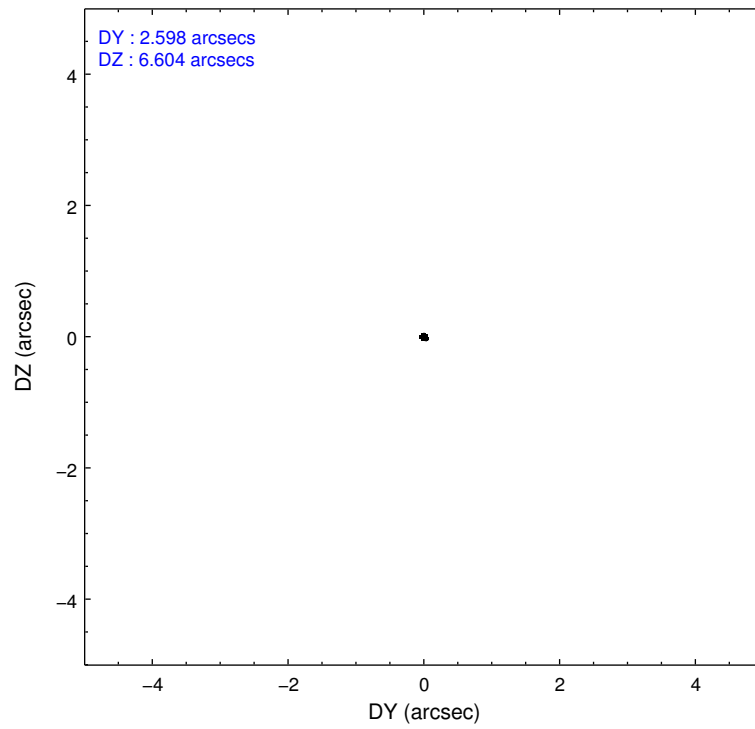
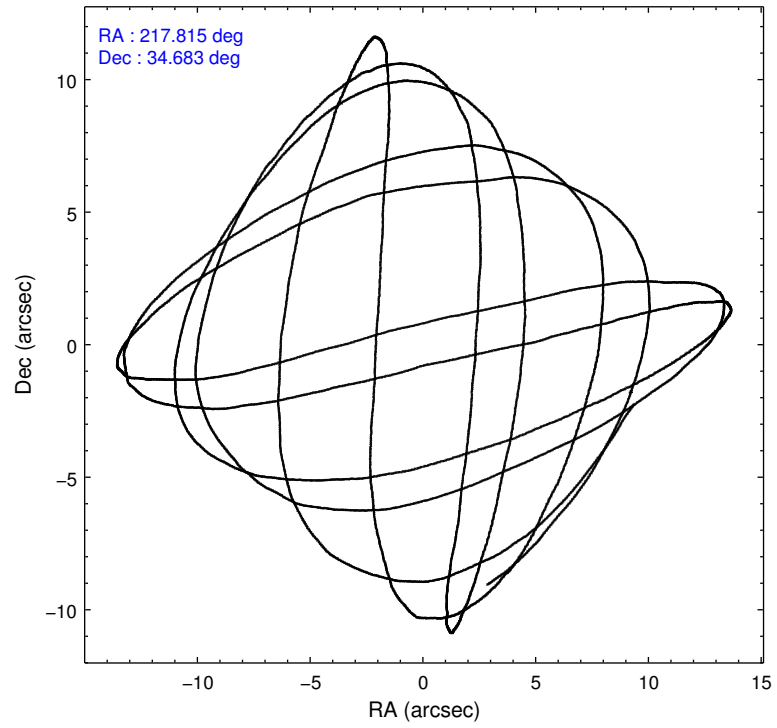
	ccd 0	ccd 1	ccd 2	ccd 3	ccd 6
level 1 events	21951	21777	23903	24210	23350
rejected events	19725	19370	21683	21918	21096
rejected %	89%	88%	90%	90%	90%

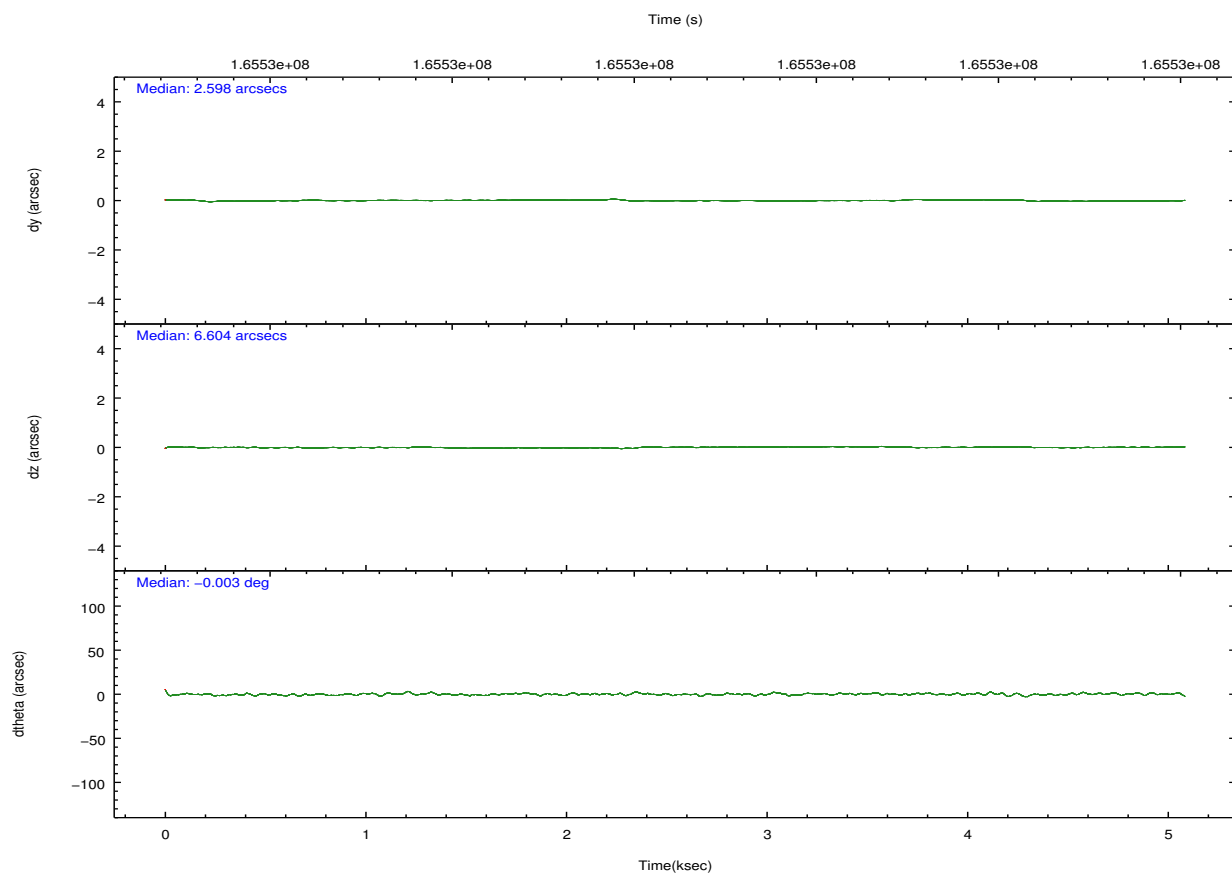
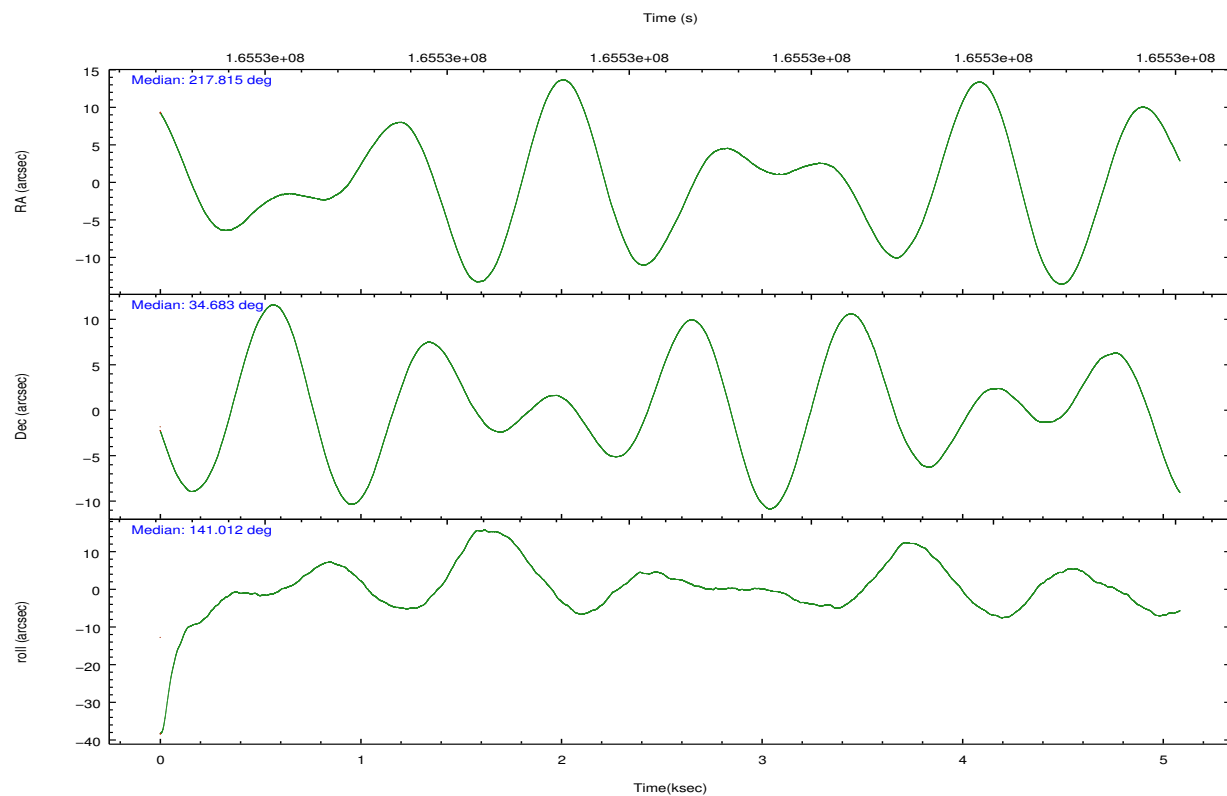
	ccd 0	ccd 1	ccd 2	ccd 3	ccd 6
grade 0 events	824	870	843	954	825
	3%	3%	3%	3%	3%
grade 1 events	13	7	6	11	14
	0%	0%	0%	0%	0%
grade 2 events	498	512	483	438	479
	2%	2%	2%	1%	2%
grade 3 events	269	276	279	244	241
	1%	1%	1%	1%	1%
grade 4 events	243	280	262	240	279
	1%	1%	1%	0%	1%
grade 5 events	691	702	632	710	699
	3%	3%	2%	2%	2%
grade 6 events	394	474	355	420	435
	1%	2%	1%	1%	1%
grade 7 events	19019	18656	21043	21193	20378
	86%	85%	88%	87%	87%

2.2 Compared Parameters

Parameter	Planned	Actual	Parameter	Planned	Actual
Instrument	ACIS	ACIS	Obspar format version number	7	7
Detector	ACIS-01236	ACIS-01236	Obspar file type	PREDICTED	ACTUAL
Grating	NONE	NONE	Obspar update status	NONE	UPDATED
Data mode	VFAINT	VFAINT	Number of optional ACIS chips dropped	0	0
Observation mode	POINTING	POINTING	On-chip summing requested	N	N
[deg] Pointing RA	217.847256	217.8143568561816	Subarray requested	NONE	NONE
[deg] Pointing Dec	34.679002	34.68311362511675	Alternating exposures requested	N	N
[deg] Pointing Roll	140.782787	141.010160490097	[s] Primary exposure time	0.000000	3.1
[mm] SIM focus pos	-0.782348	-0.7809083437167272			
[mm] SIM defocus	0	0.001439871863259334			
[mm] SIM translation stage pos	-233.592463	-233.5874344608287			
[mm] SIM translation stage offset	0	-0.005018542100998502			
[s] Observation start time (MET)	165525864.184000	165525488.00563			
Observation start date	2003-03-31T19:23:20	2003-03-31T19:18:08			
[s] Observation end time (MET)	165530764.184000	165530897.95586			
Observation end date	2003-03-31T20:45:00	2003-03-31T20:48:17			
Read mode	TIMED	TIMED			

2.3 Aspect



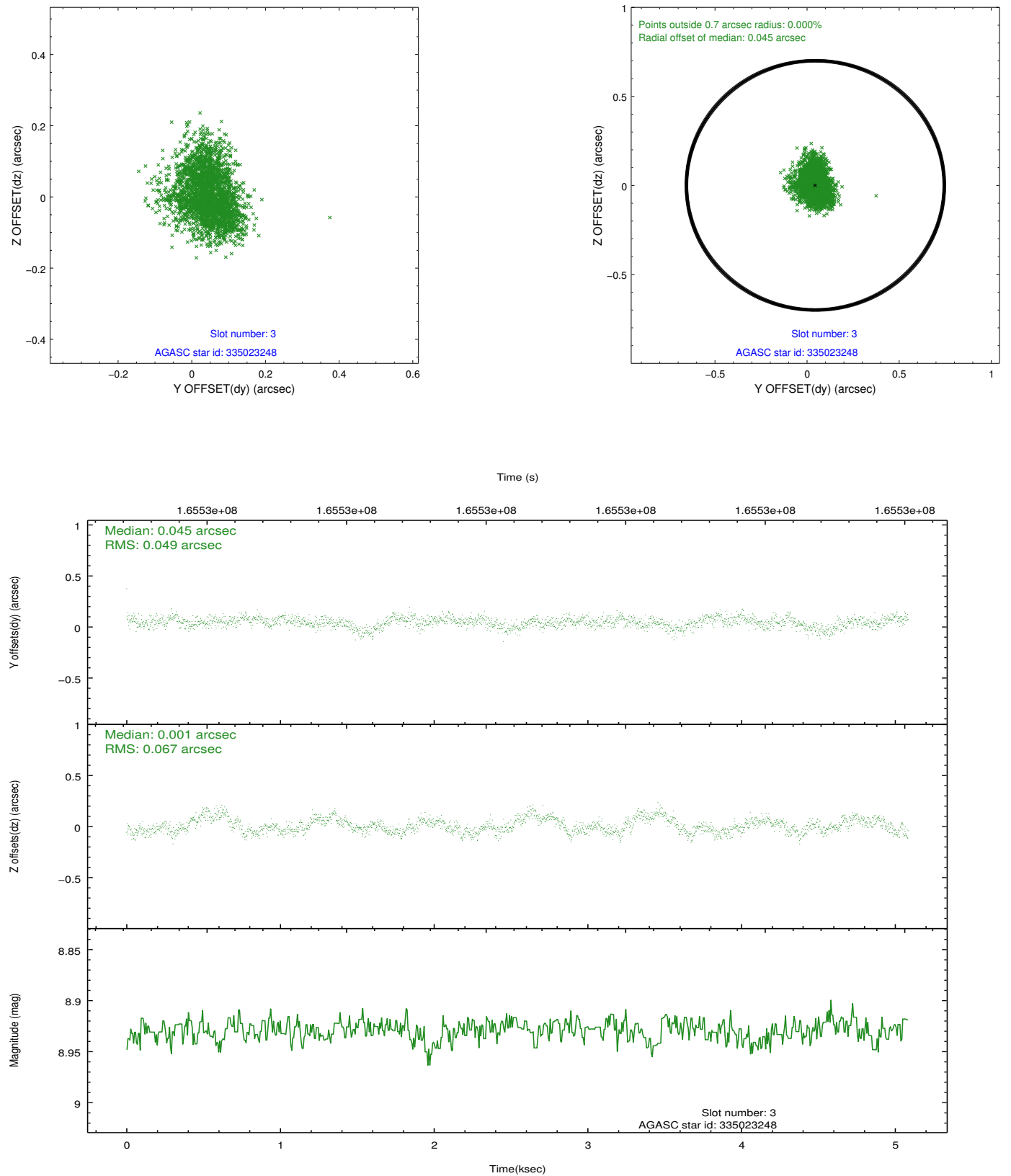


Slot Statistics

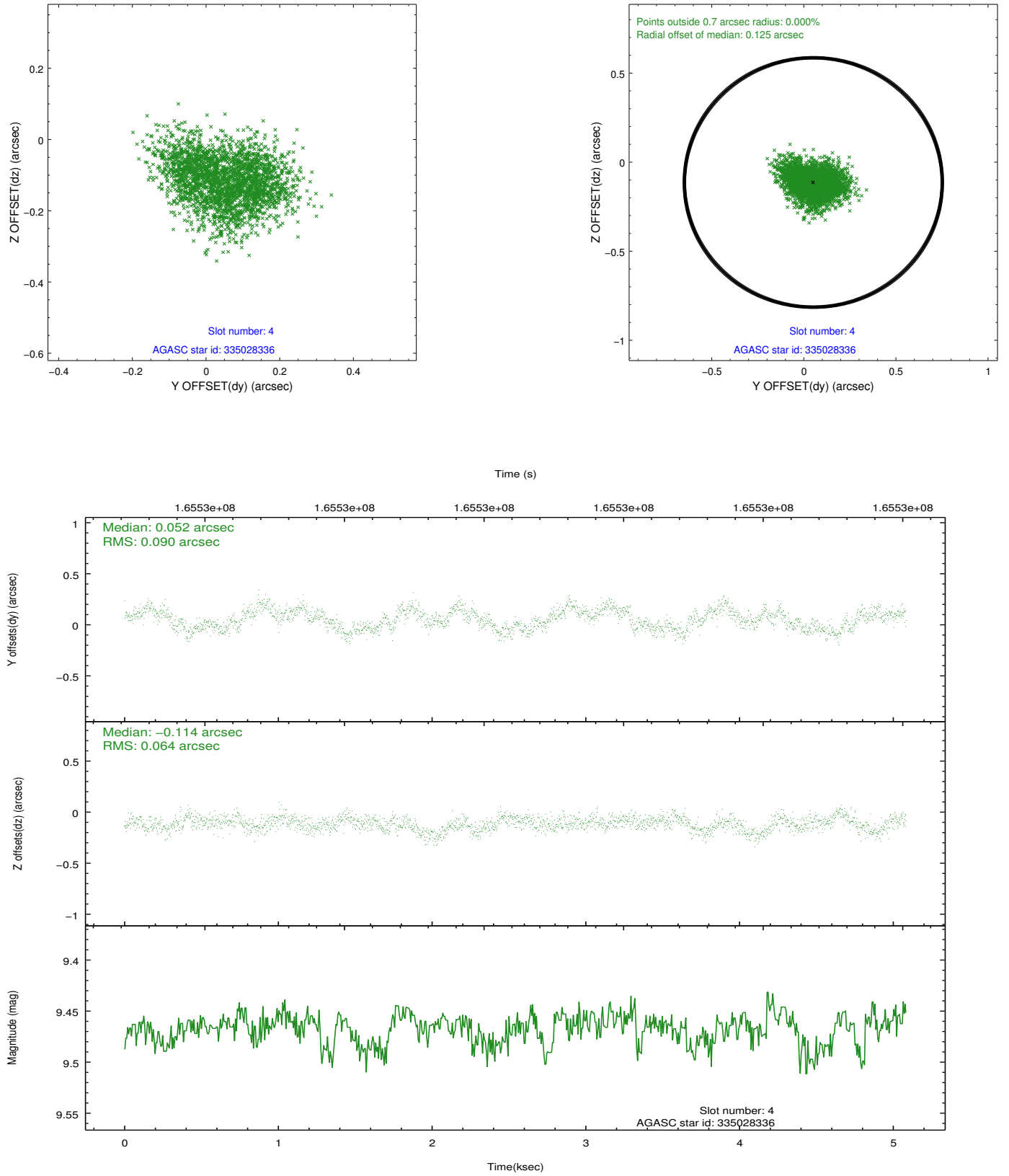
slot	status	id	mag	n_pts	med_dy	med_dz	dr1	dr2	ra	dec	mean_y	mean_z
0	FID	ACIS-I-1	7.25	1240	-0.098	0.015	0.008	0.015	0.000000	0.000000	937.12	-829.95
1	FID	ACIS-I-2	7.17	1240	-0.066	-0.042	0.006	0.011	0.000000	0.000000	-756.26	-837.07
2	FID	ACIS-I-4	7.18	1240	0.066	0.094	0.006	0.012	0.000000	0.000000	2156.60	1069.35
3	GUIDE	335023248	8.93	2479	0.045	0.001	0.088	0.143	217.634832	34.944512	1091.09	-344.88
4	GUIDE	335028336	9.47	2480	0.052	-0.114	0.119	0.186	217.189840	34.665629	1482.88	1262.70
5	GUIDE	335415168	9.74	2460	-0.144	-0.003	0.330	0.469	217.681296	35.301767	1797.05	-1428.50
6	GUIDE	335417968	9.40	2479	0.072	0.181	0.117	0.182	217.358149	35.055285	1976.83	-141.49
7	GUIDE	335023304	8.40	2478	-0.062	-0.056	0.111	0.159	218.883608	34.686545	-2348.38	-1973.14

2.4 Star Slots

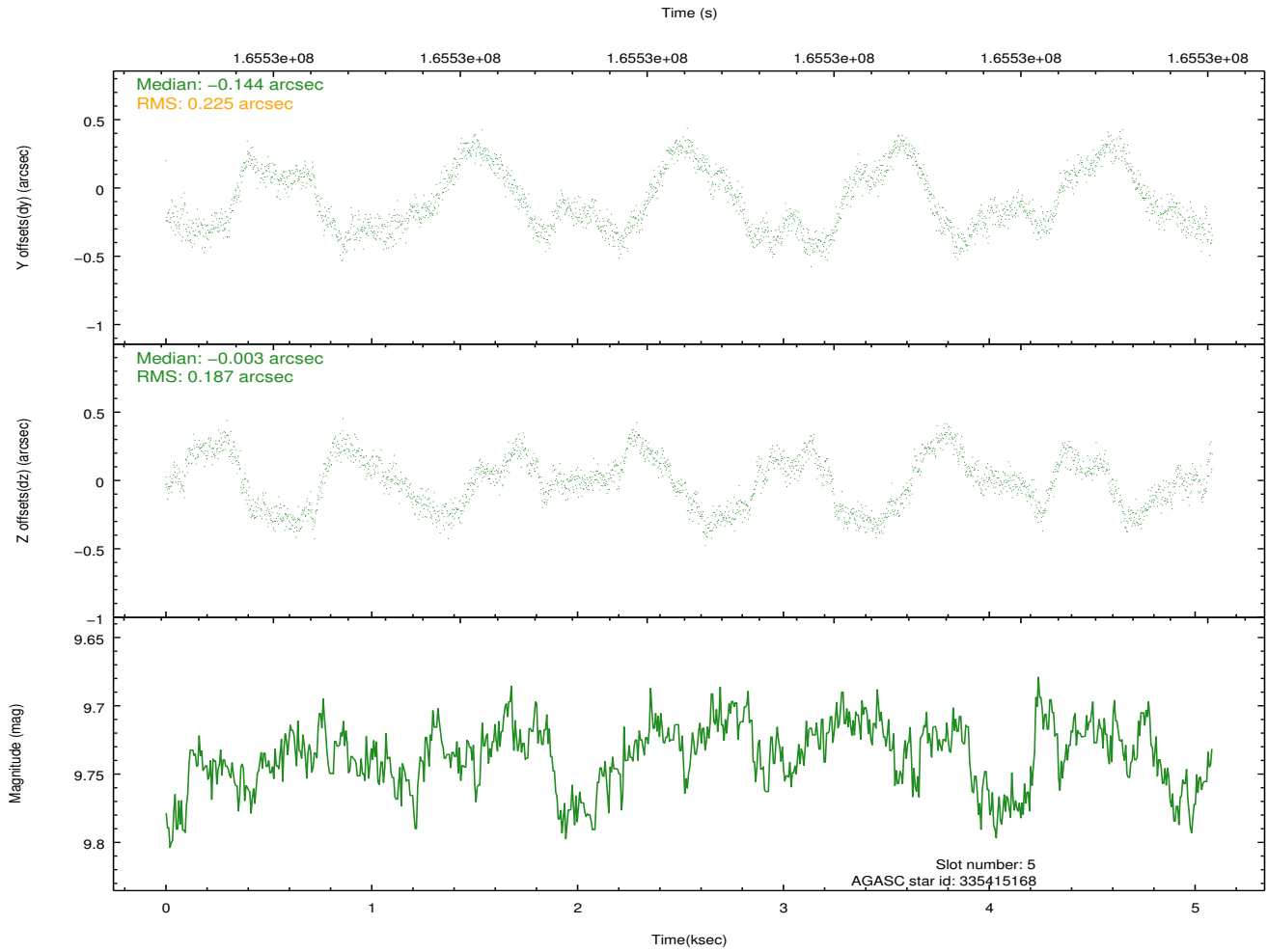
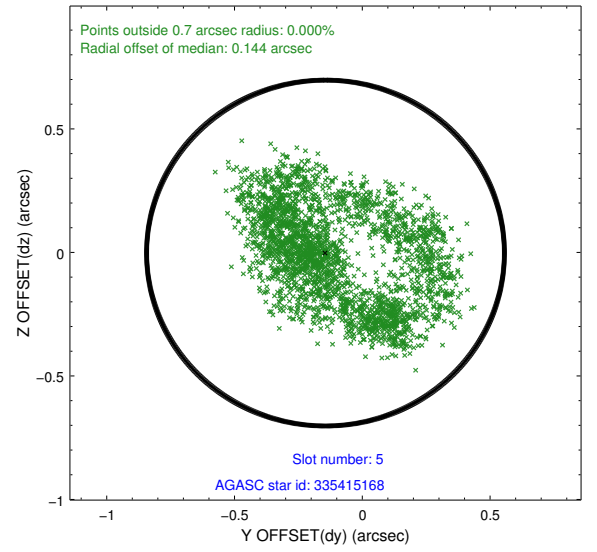
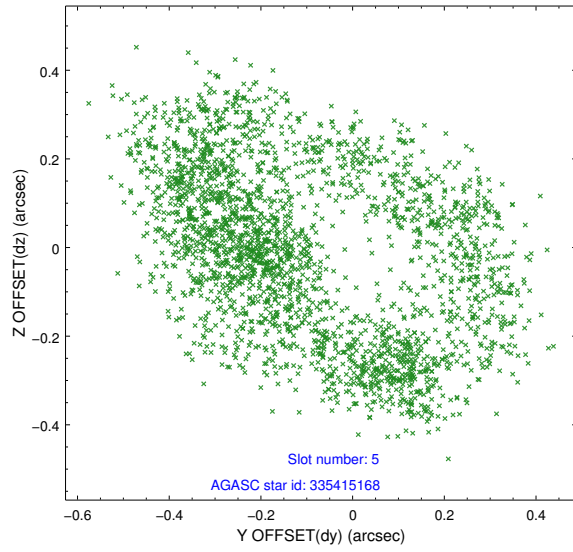
2.4.1 Slot 3



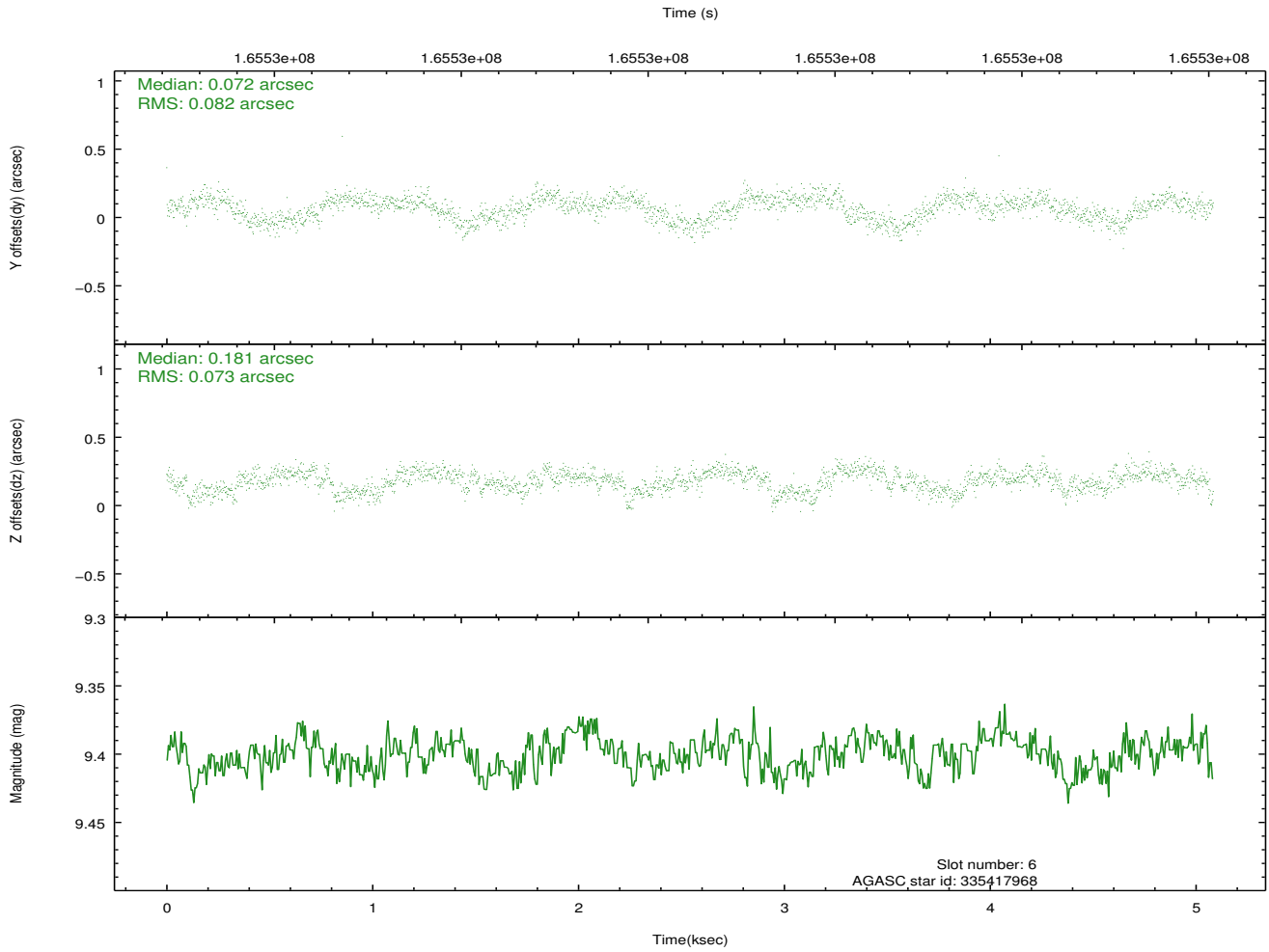
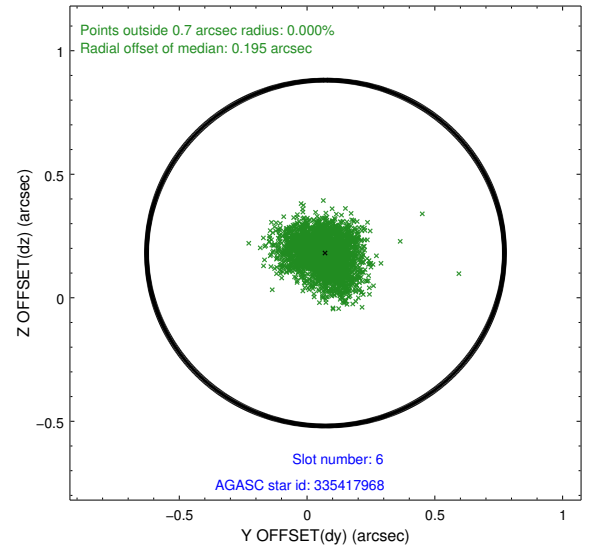
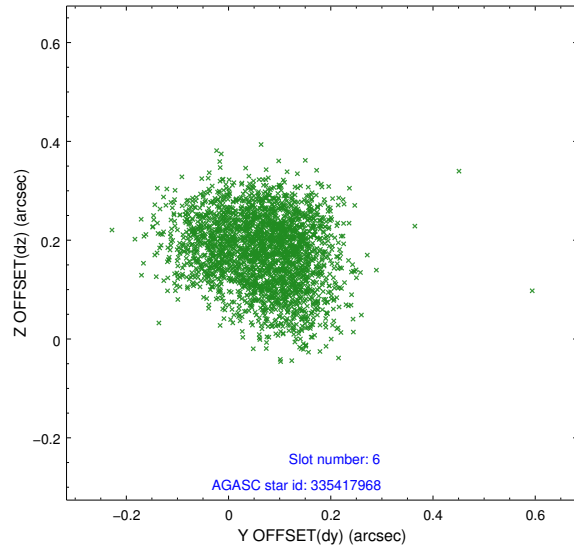
2.4.2 Slot 4



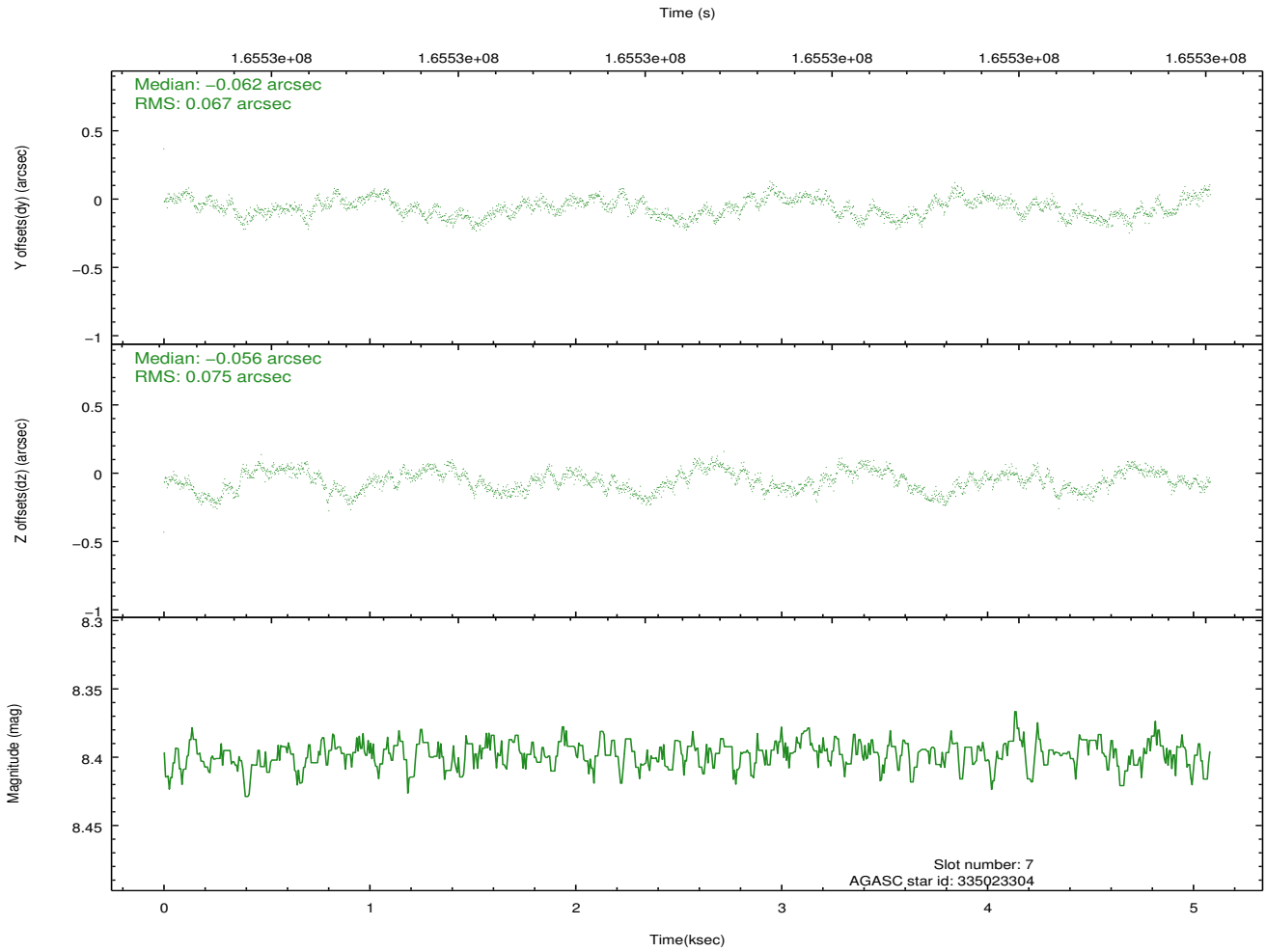
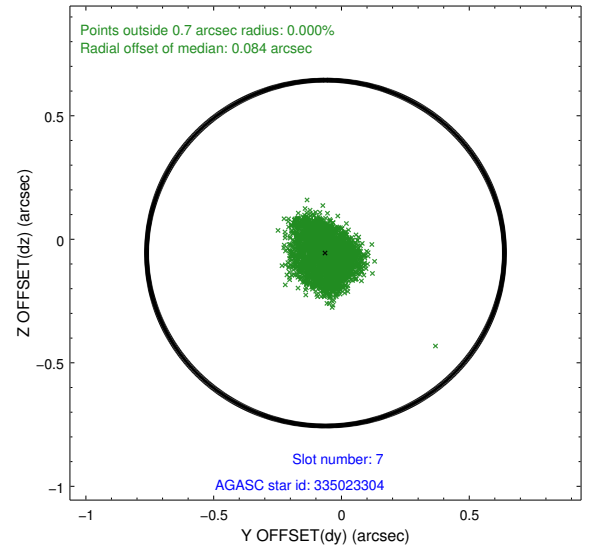
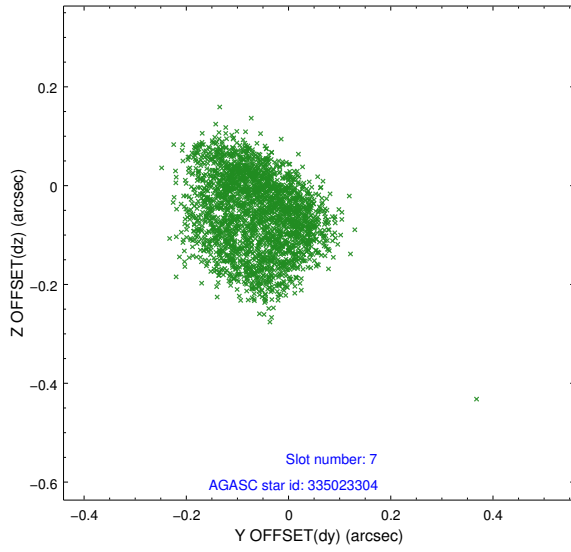
2.4.3 Slot 5



2.4.4 Slot 6

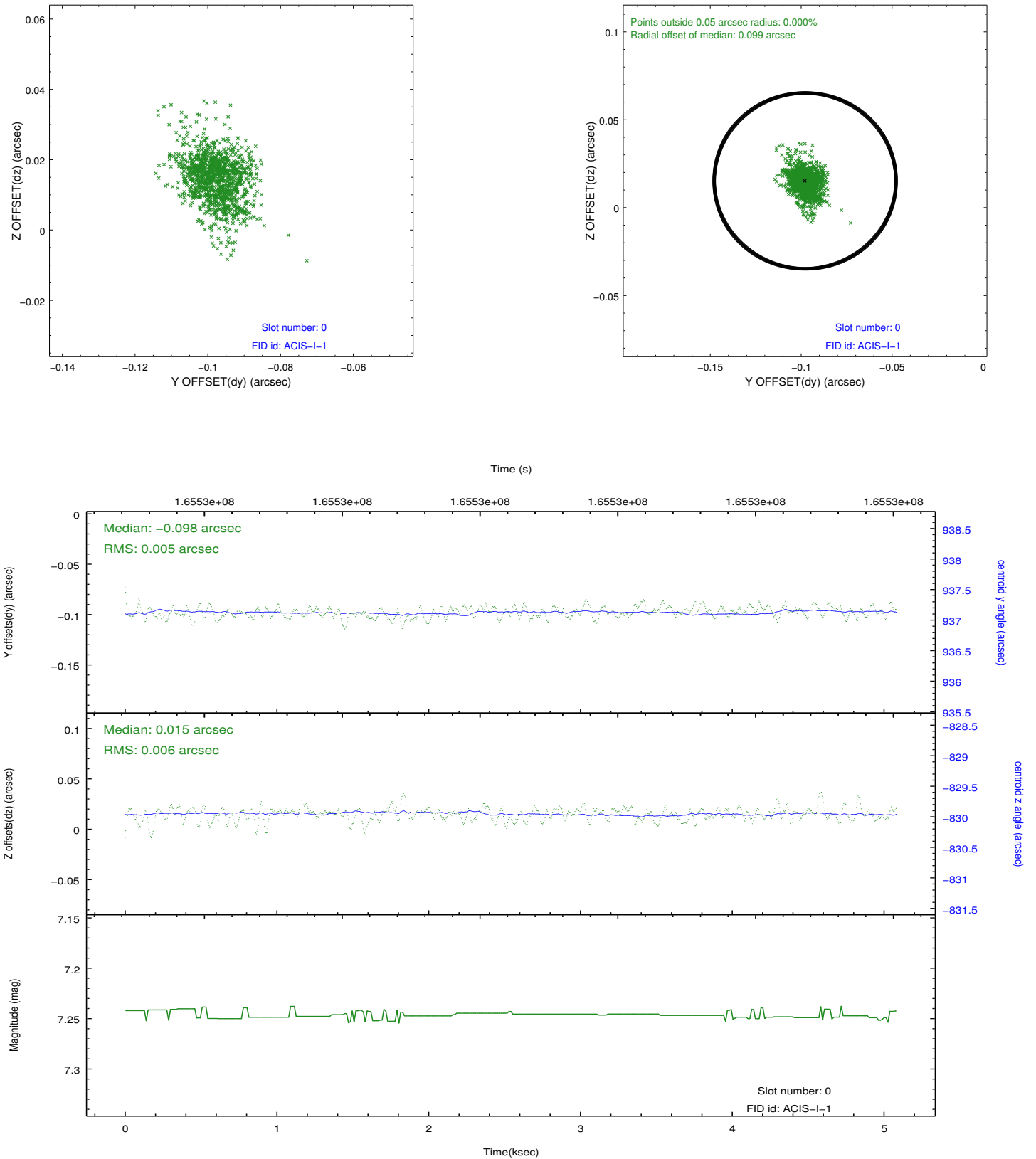


2.4.5 Slot 7

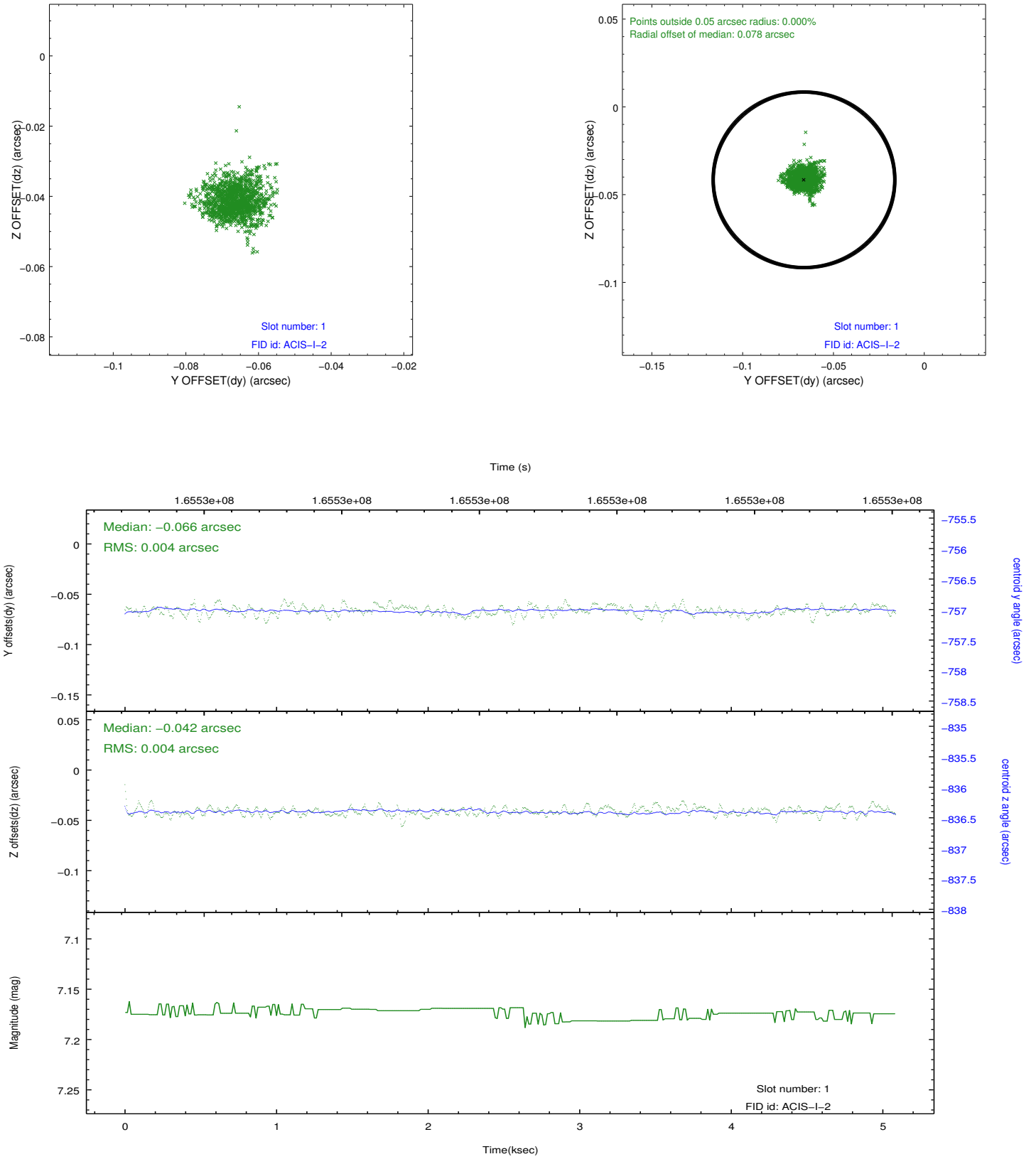


2.5 FID Slots

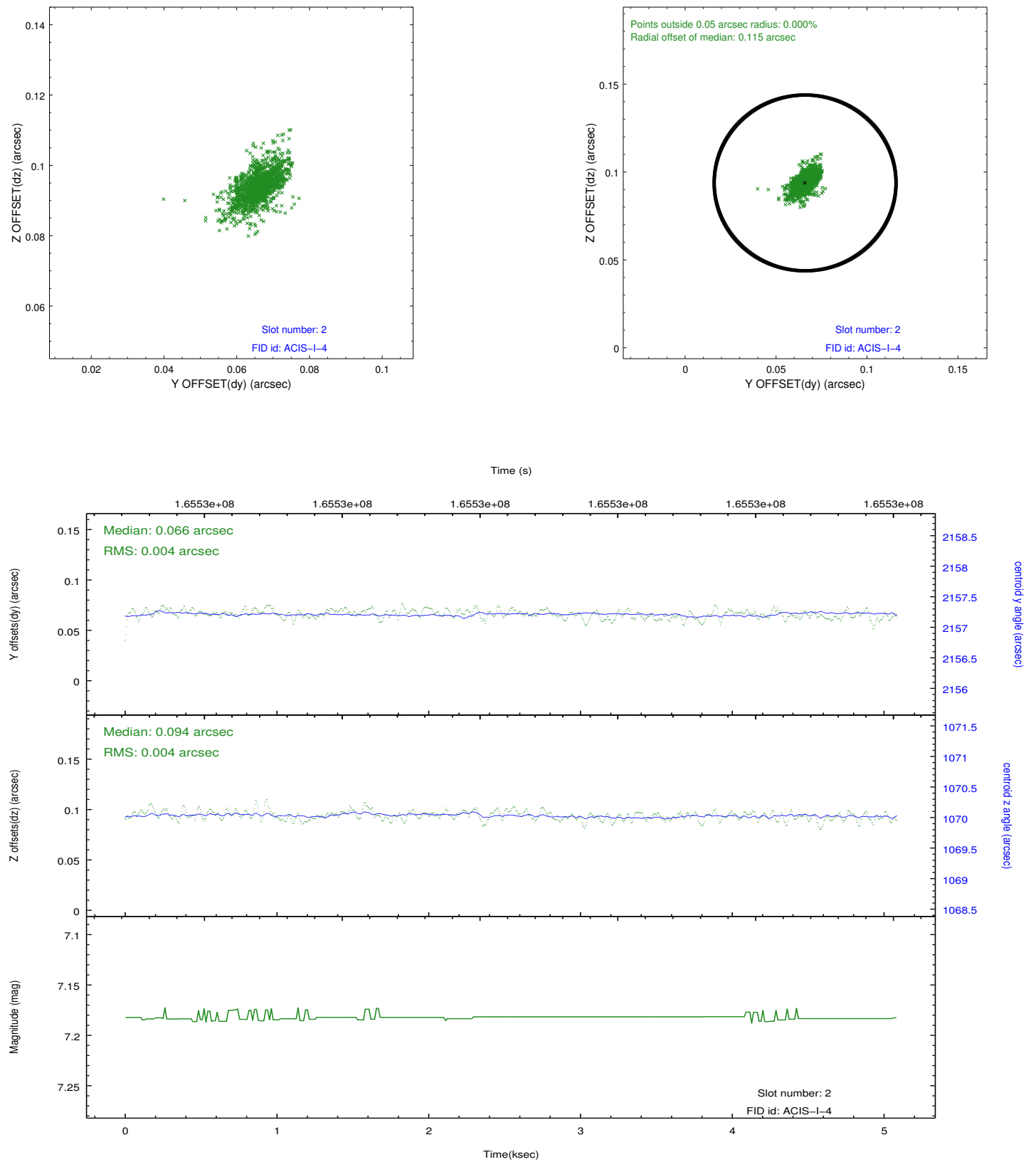
2.5.1 Slot 0



2.5.2 Slot 1



2.5.3 Slot 2



A Summary

A.1 Status

V&V Scientist	Jen Lauer
V&V Date (YYYY-MM-DD)	2012.11.09
V&V Edition	1
V&V Disposition and Status	OK
V&V Charge Time	4.674

A.2 Comments