

V&V Reference Report

L2 ASCDS Version : 7.6.8

Observation 3606 - L2 Version 001
Chandra X-Ray Center

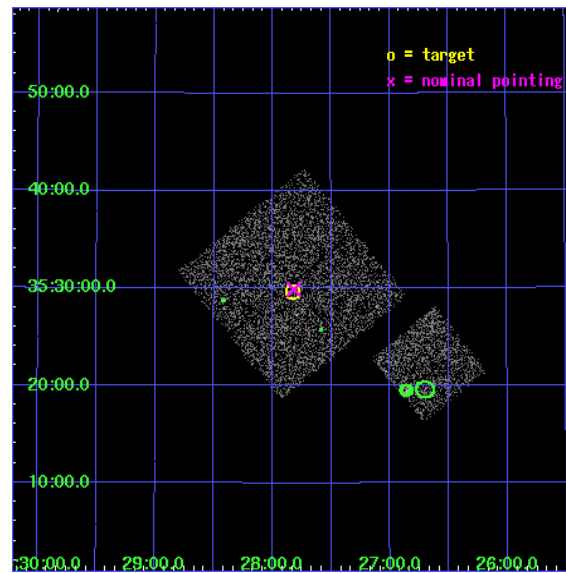
L2 Processing Date : Jul 29 2006

Contents

1	Front	2
2	OBI	3
2.1	OBI	3
2.1.1	Images	3
2.1.2	Bias	3
2.1.3	Parameters	4
2.1.4	Events	4
2.2	Compared Parameters	5
2.3	Aspect	6
2.4	Star Slots	9
2.4.1	Slot 3	9
2.4.2	Slot 4	10
2.4.3	Slot 5	11
2.4.4	Slot 6	12
2.4.5	Slot 7	13
2.5	FID Slots	14
2.5.1	Slot 0	14
2.5.2	Slot 1	15
2.5.3	Slot 2	16
3	Point Sources	17
A	Summary	18
A.1	Status	18
A.2	Comments	18

1 Front

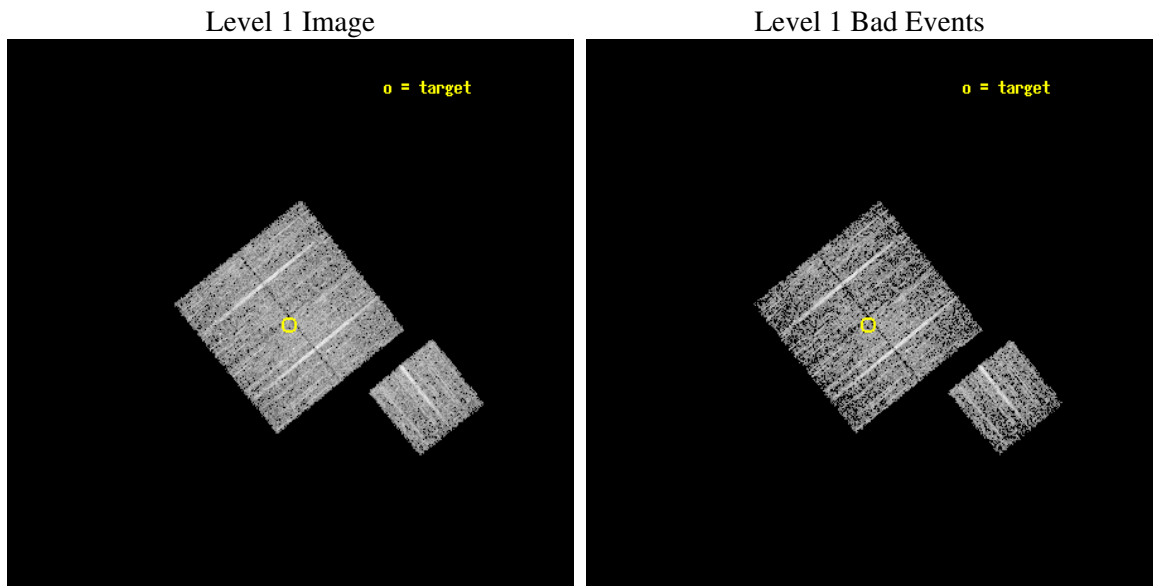
seq_num	900206
obs_id	3606
title	CHANDRA LARGE SCALE SURVEY OF THE NOAO BOOTES DEEP FIELD
observer	Dr. Stephen Murray
object	NOAO FIELD F13
dtcycle	0
cycle	P
ra_targ	216.957163
dec_targ	35.493858
ra_nom	216.95450566372
dec_nom	35.497960902101
roll_nom	141.01017053741
revision	2
ontime	4674.7999910116
livetime	4613.7202875914
ontime0	4668.5180205703
ontime1	4674.7999910116
ontime2	4674.7999910116
ontime3	4674.7999910116
ontime6	4668.5179708004
l2events	9676



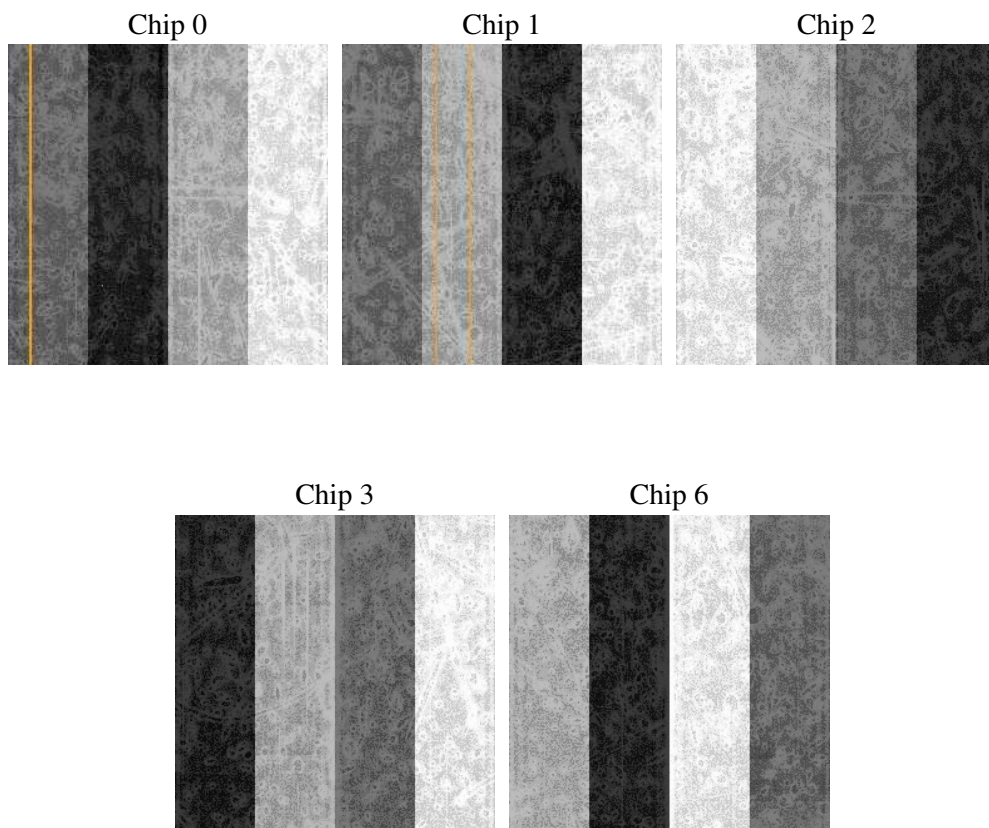
2 OBI

2.1 OBI

2.1.1 Images



2.1.2 Bias



2.1.3 Parameters

obi_num	1
ascdsver	7.6.8
caldsver	3.2.2
date	2006-07-29T19:42:46
revision	2

sched_exp_time	4900.000000
ontime	4680.107547164
ontime0	4673.8255568147
ontime1	4680.107547164
ontime2	4680.107547164
ontime3	4680.107547164
ontime6	4673.8255269527
llevents	115565

2.1.4 Events

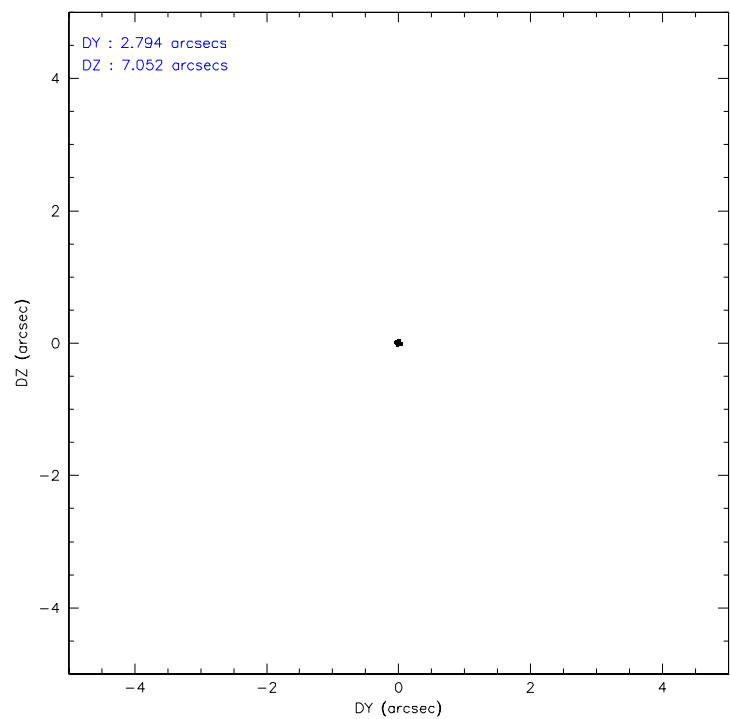
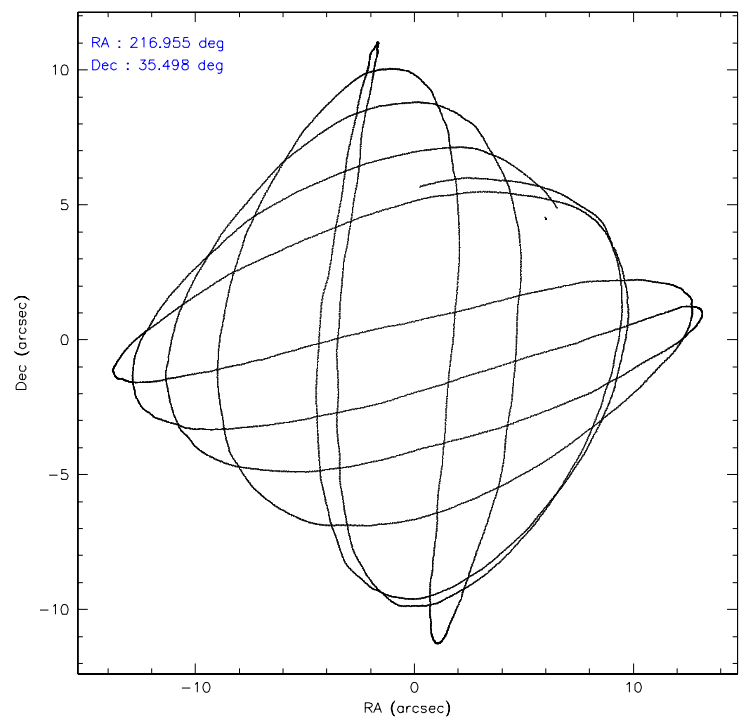
	ccd 0	ccd 1	ccd 2	ccd 3	ccd 6
level 1 events	21645	22143	24799	23433	23545
rejected events	19333	19675	22565	21186	21053
rejected %	89%	88%	90%	90%	89%

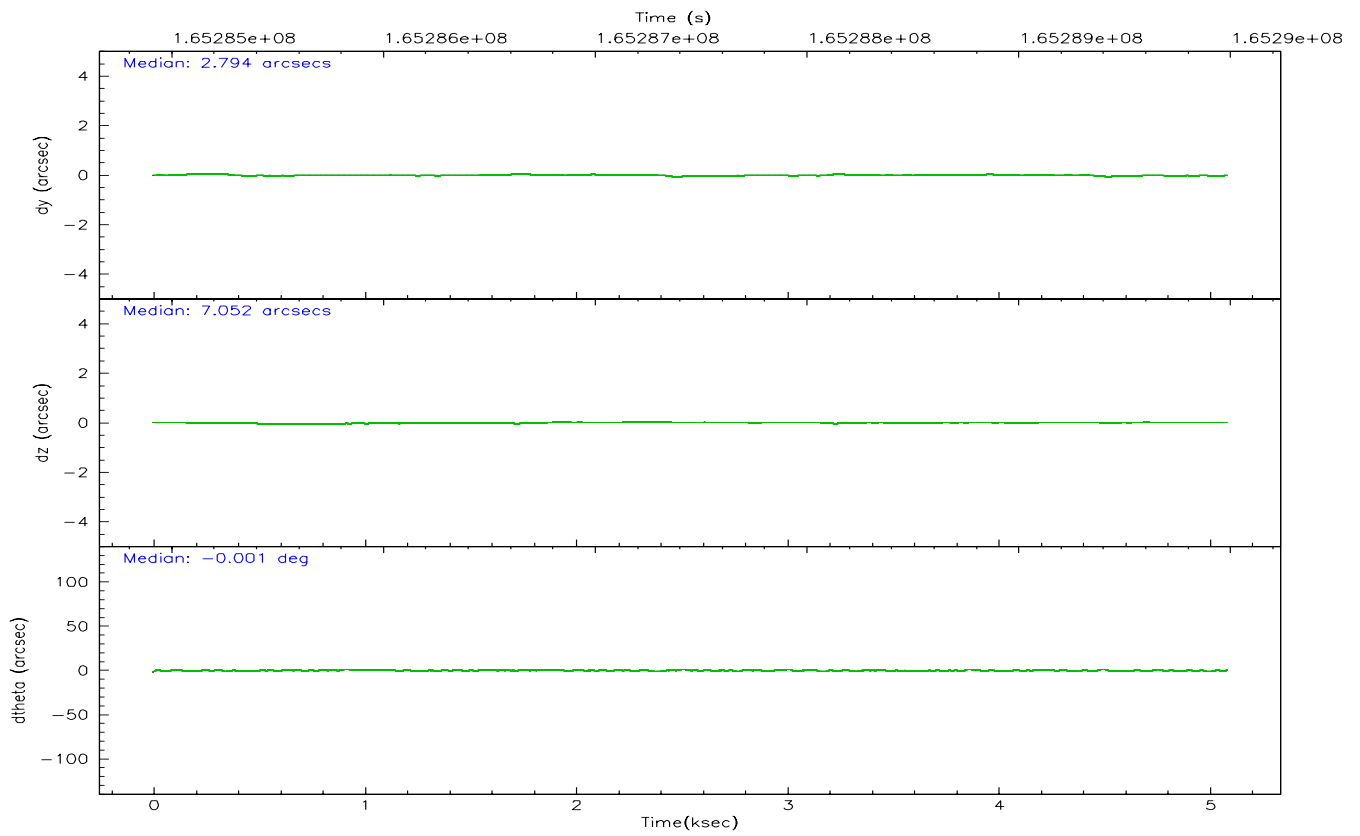
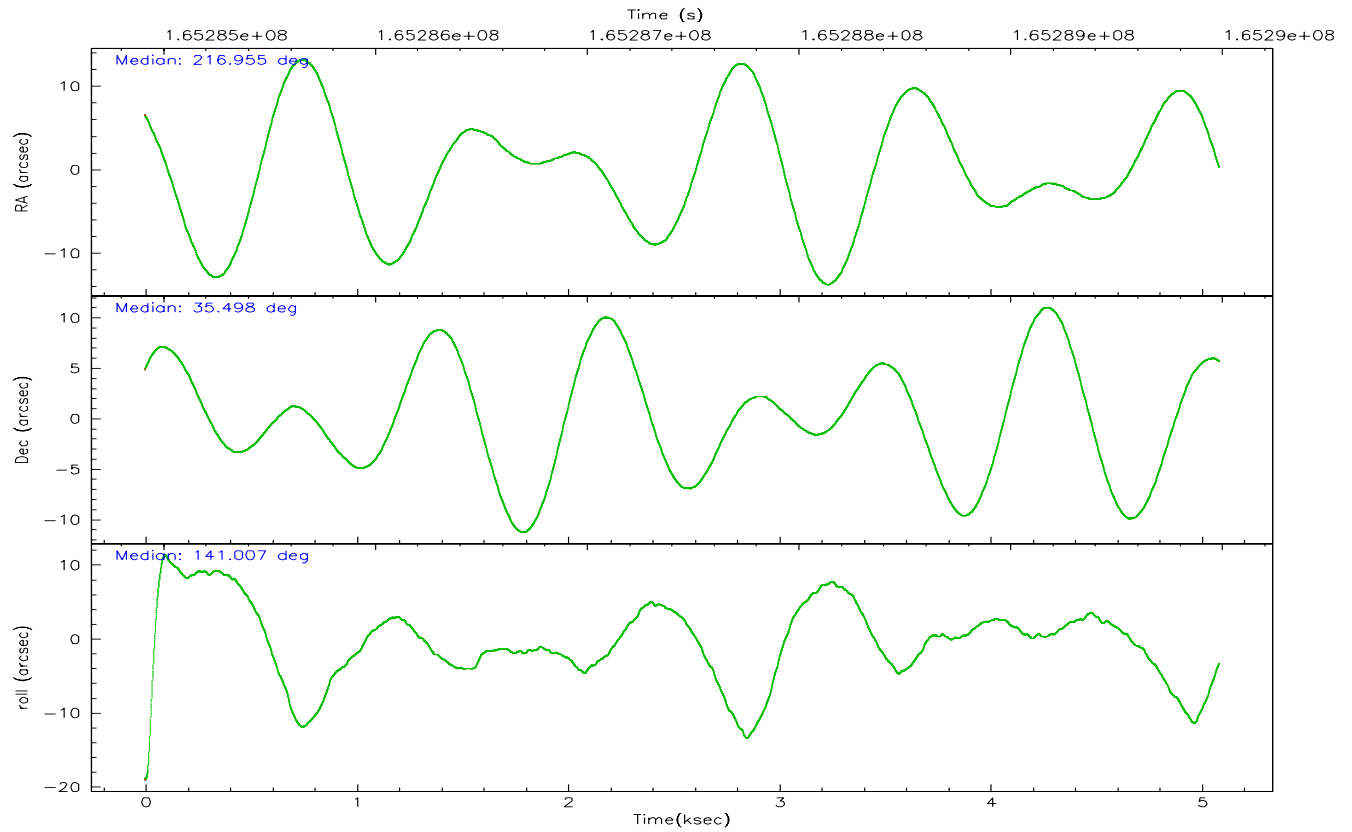
	ccd 0	ccd 1	ccd 2	ccd 3	ccd 6
grade 0 events	850	898	855	862	991
	3%	4%	3%	3%	4%
grade 1 events	14	9	13	8	14
	0%	0%	0%	0%	0%
grade 2 events	513	483	484	458	492
	2%	2%	1%	1%	2%
grade 3 events	277	300	243	247	285
	1%	1%	0%	1%	1%
grade 4 events	239	297	280	257	266
	1%	1%	1%	1%	1%
grade 5 events	710	756	664	739	796
	3%	3%	2%	3%	3%
grade 6 events	436	491	373	426	461
	2%	2%	1%	1%	1%
grade 7 events	18606	18909	21887	20436	20240
	85%	85%	88%	87%	85%

2.2 Compared Parameters

Parameter	Planned	Actual	Parameter	Planned	Actual
Instrument	ACIS	ACIS	Obspar format version number	6	6
Detector	ACIS-01236	ACIS-01236	Obspar file type	PREDICTED	ACTUAL
Grating	NONE	NONE	Obspar update status	NONE	UPDATED
Data mode	VFAINT	VFAINT	On-chip summing requested	N	N
Observation mode	POINTING	POINTING	Subarray requested	NONE	NONE
Pointing RA	216.987722	216.9545056637245	Alternating exposures requested	N	N
Pointing Dec	35.493779	35.4979609021015	Primary exposure time	0.000000	3.1
Pointing Roll	140.782258	141.0101705374138			
SIM focus pos (mm)	-0.782348	-0.7809083437167272			
SIM defocus (mm)	0	0.001439871863259334			
SIM translation stage pos (mm)	-233.592463	-233.5874344608287			
SIM translation stage offset (mm)	0	-0.005018542100998502			
Observation start time	165285090.184000	165284714.47048			
Observation start date	2003-03-29T00:30:26	2003-03-29T00:25:14			
Observation end time	165289990.184000	165290632.30823			
Observation end date	2003-03-29T01:52:06	2003-03-29T02:03:52			
Read mode	TIMED	TIMED			

2.3 Aspect



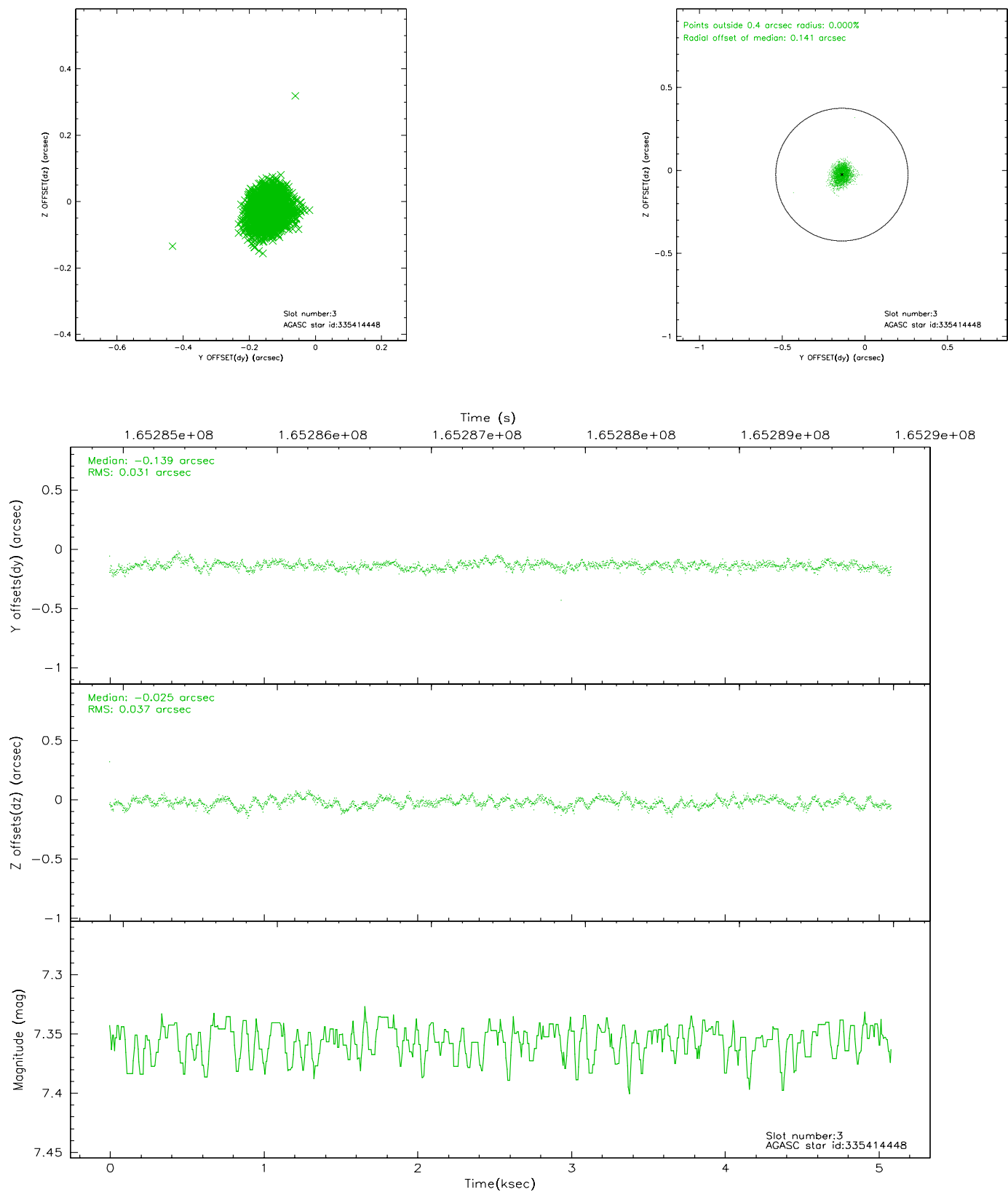


Slot Statistics

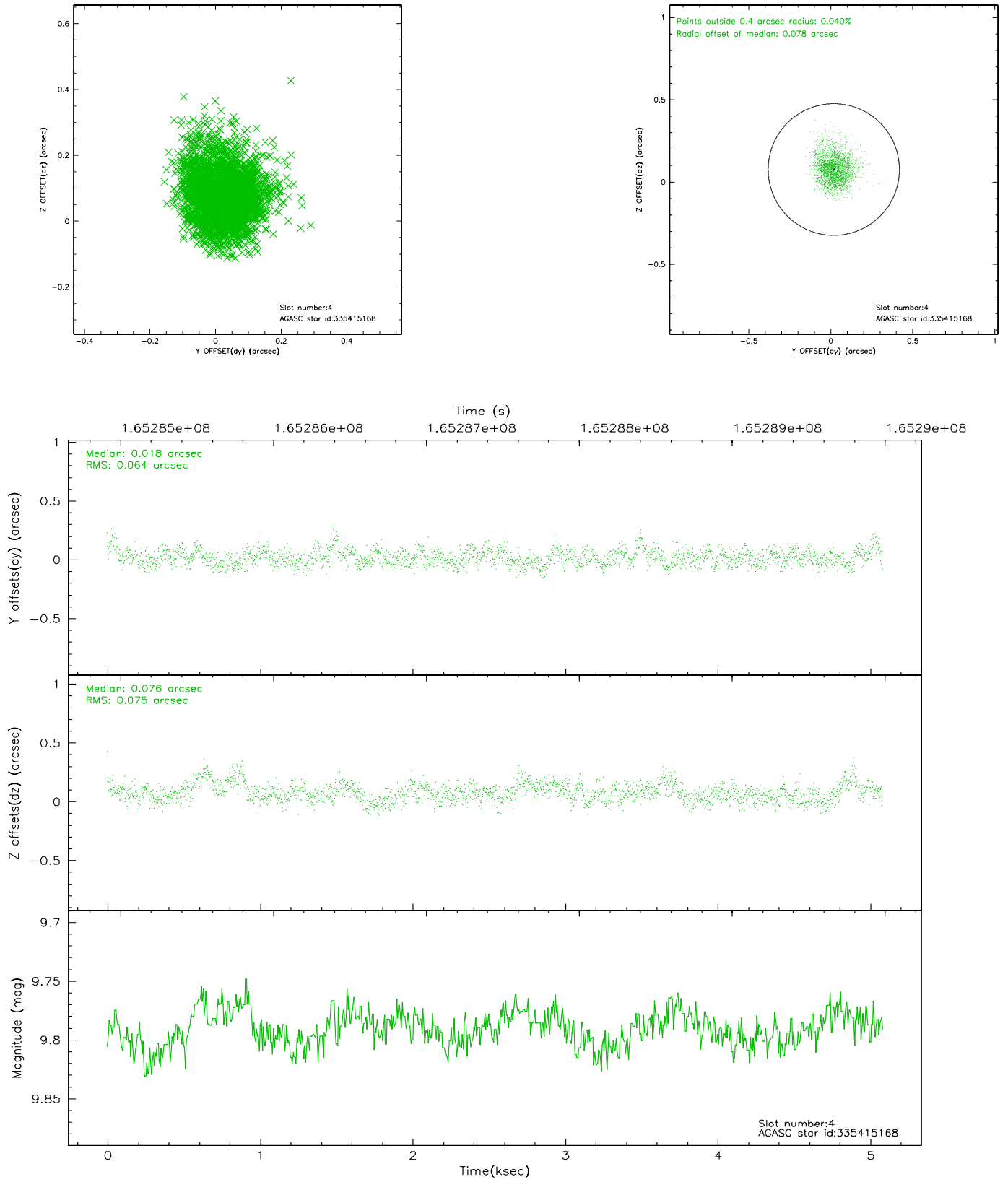
slot	status	id	mag	n_pts	med_dy	med_dz	dr1	dr2	ra	dec	mean_y	mean_z
0	FID	ACIS-I-1	7.25	1241	-0.004	0.030	0.006	0.010	0.000000	0.000000	936.99	-830.43
1	FID	ACIS-I-5	7.24	1241	-0.053	0.050	0.006	0.011	0.000000	0.000000	-1810.47	1066.53
2	FID	ACIS-I-6	7.26	1241	-0.034	-0.010	0.006	0.010	0.000000	0.000000	401.25	1712.29
3	GUIDE	335414448	7.35	2480	-0.139	-0.025	0.050	0.081	216.992261	35.577204	179.20	-240.55
4	GUIDE	335415168	9.79	2480	0.018	0.076	0.105	0.173	217.681296	35.301767	-2010.70	-757.89
5	GUIDE	335417968	9.39	2480	0.066	-0.016	0.093	0.174	217.358149	35.055285	-1843.26	531.25
6	GUIDE	335419120	9.65	2479	0.017	0.042	0.093	0.148	216.521861	35.833546	1828.14	-89.64
7	GUIDE	335028336	9.48	2480	0.031	-0.075	0.111	0.180	217.189840	34.665629	-2347.65	1931.20

2.4 Star Slots

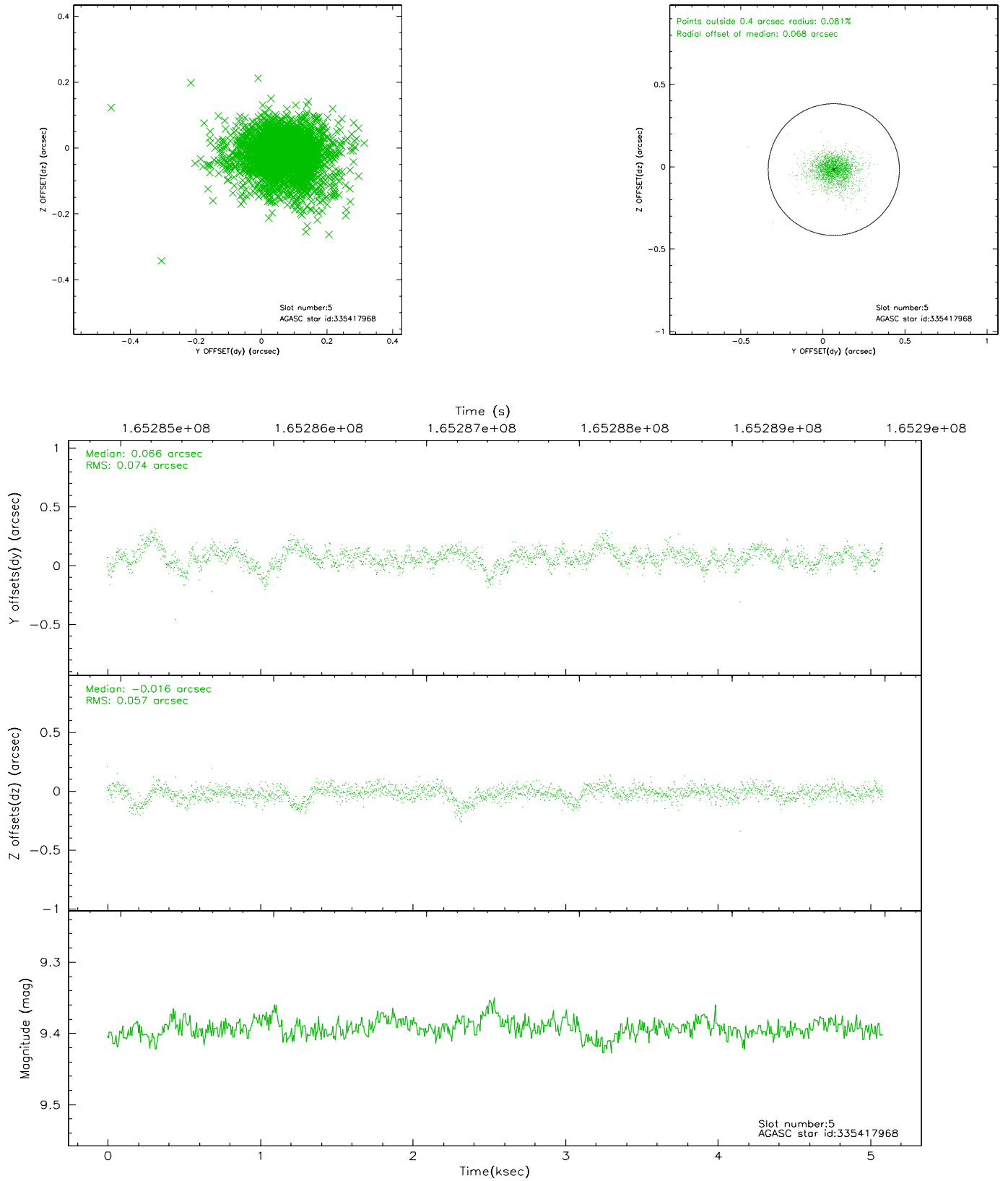
2.4.1 Slot 3



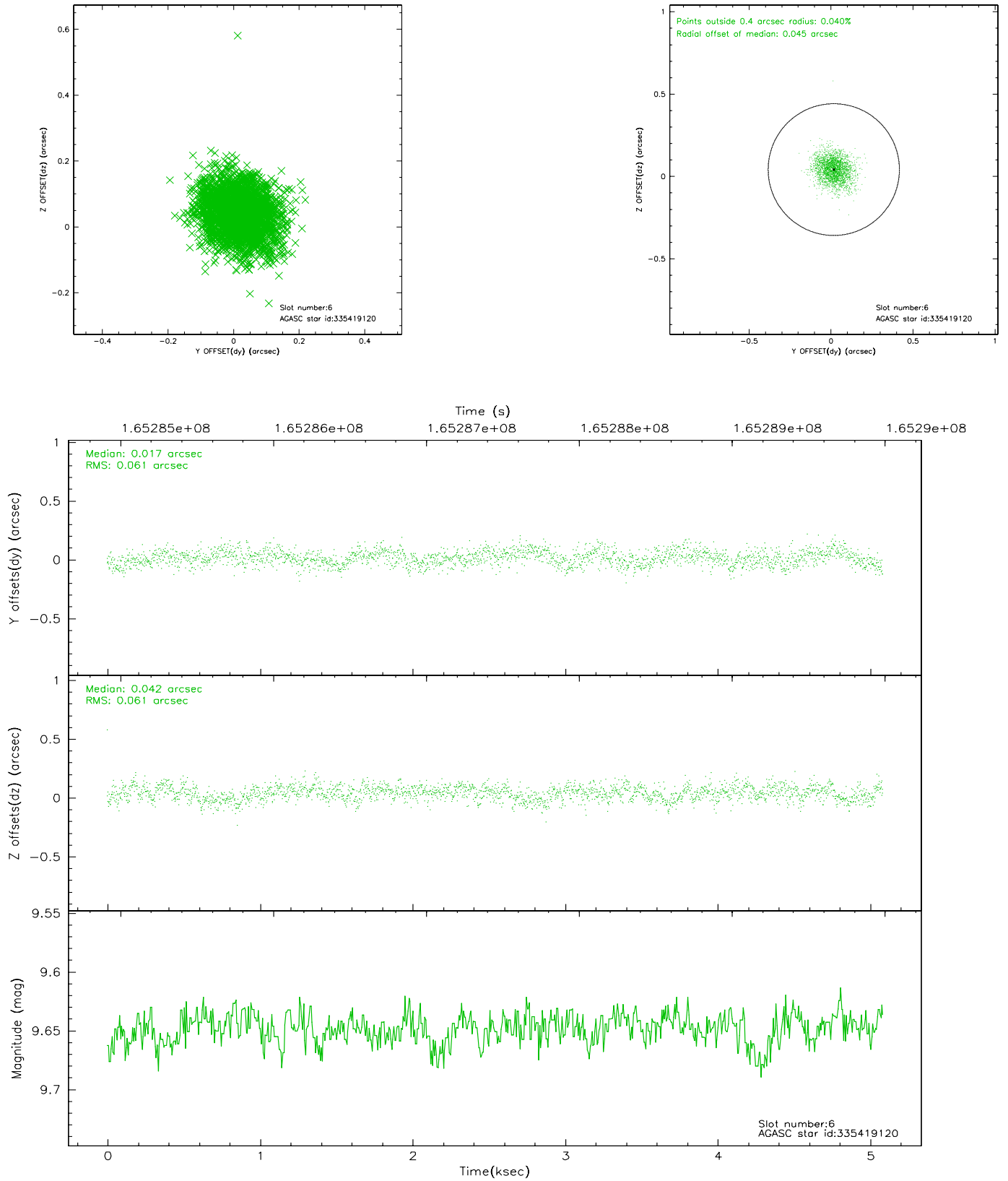
2.4.2 Slot 4



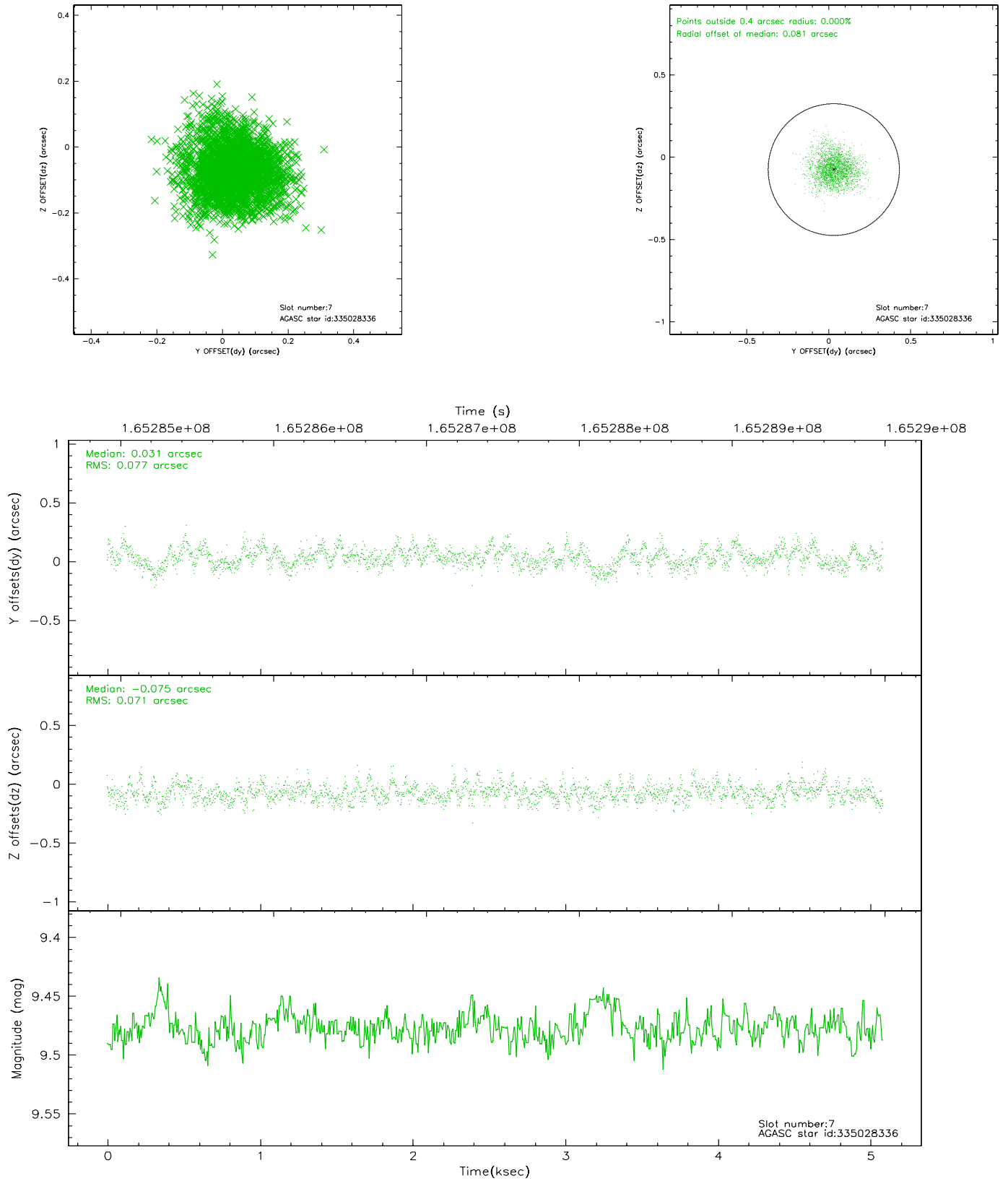
2.4.3 Slot 5



2.4.4 Slot 6

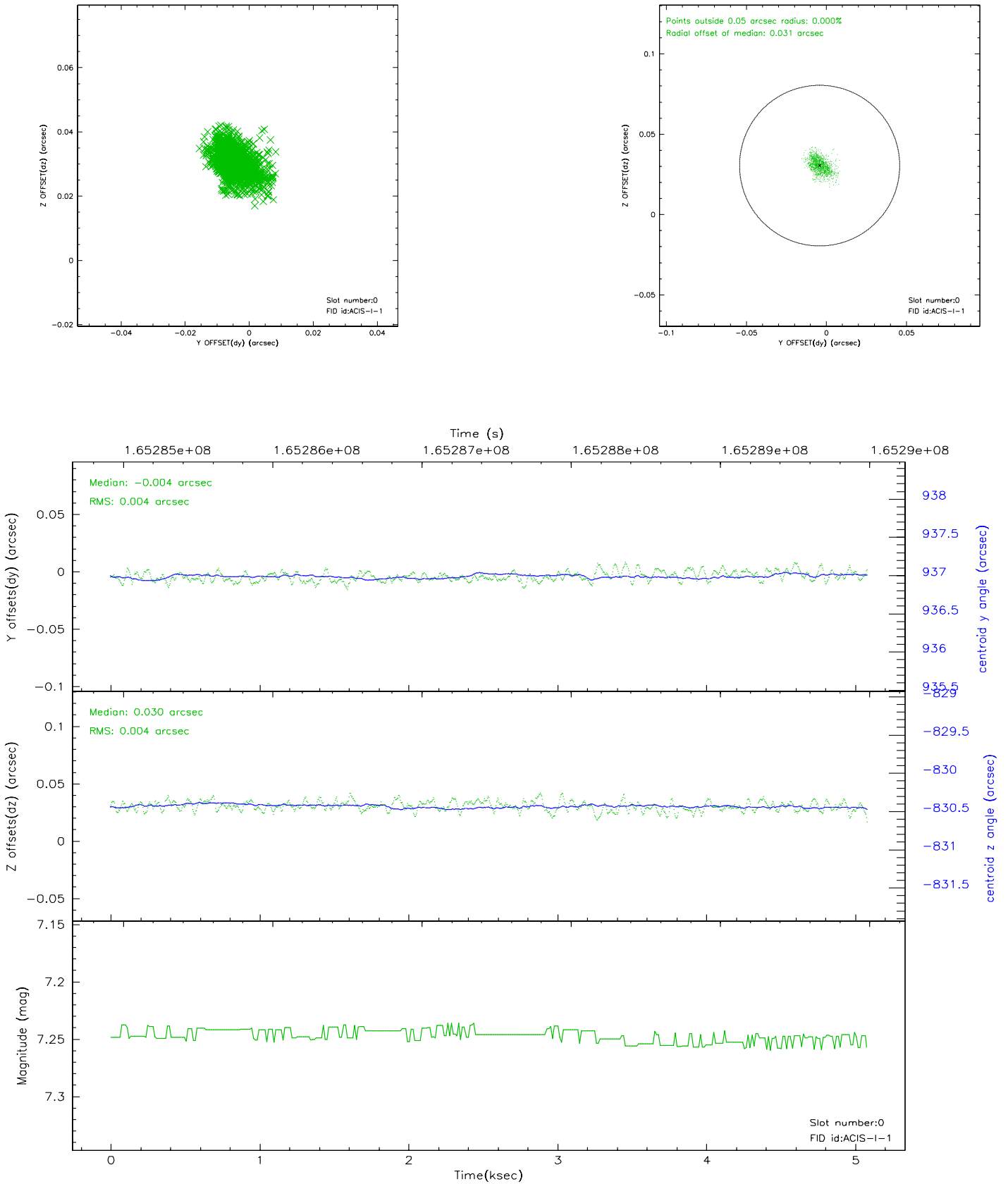


2.4.5 Slot 7

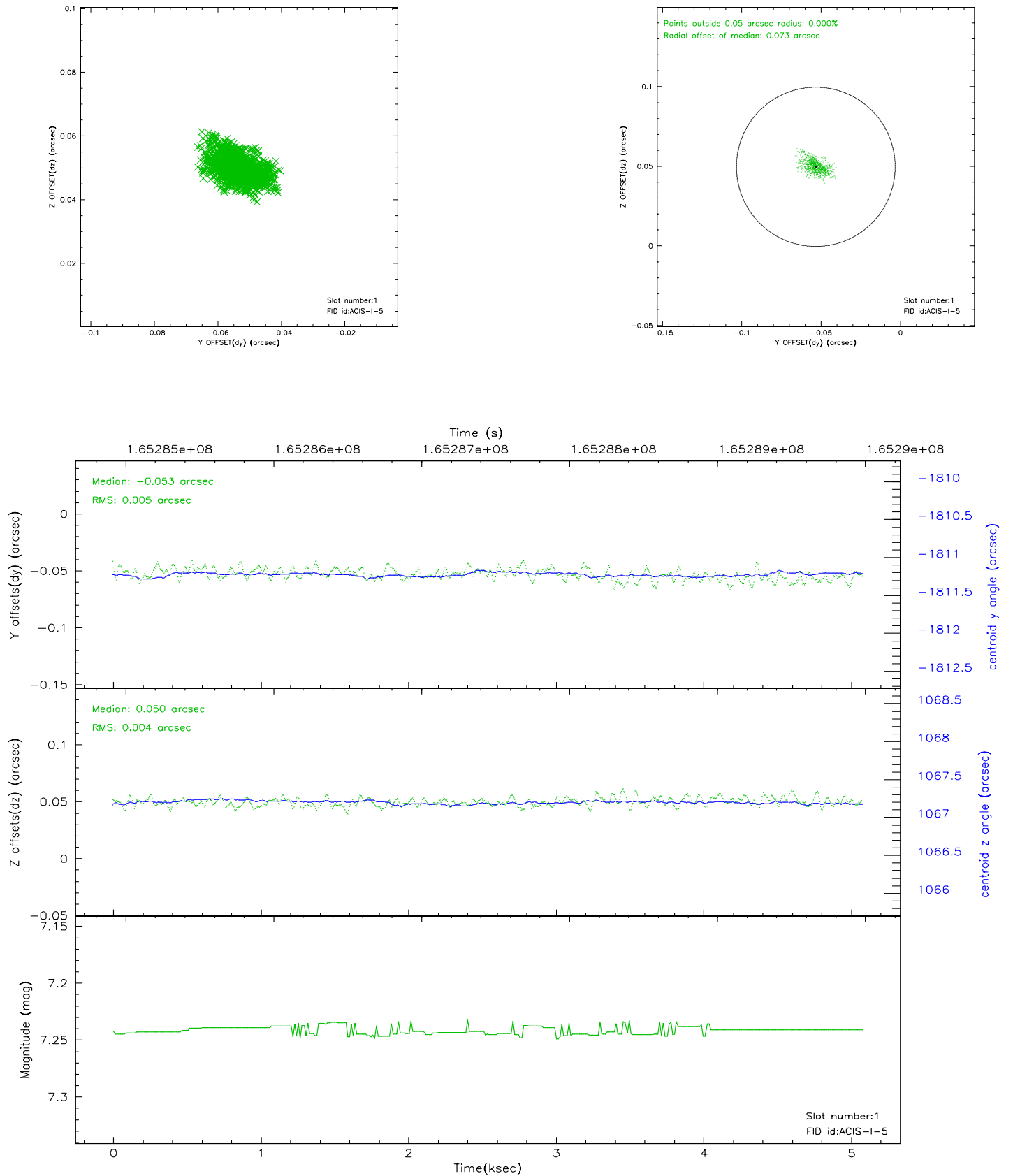


2.5 FID Slots

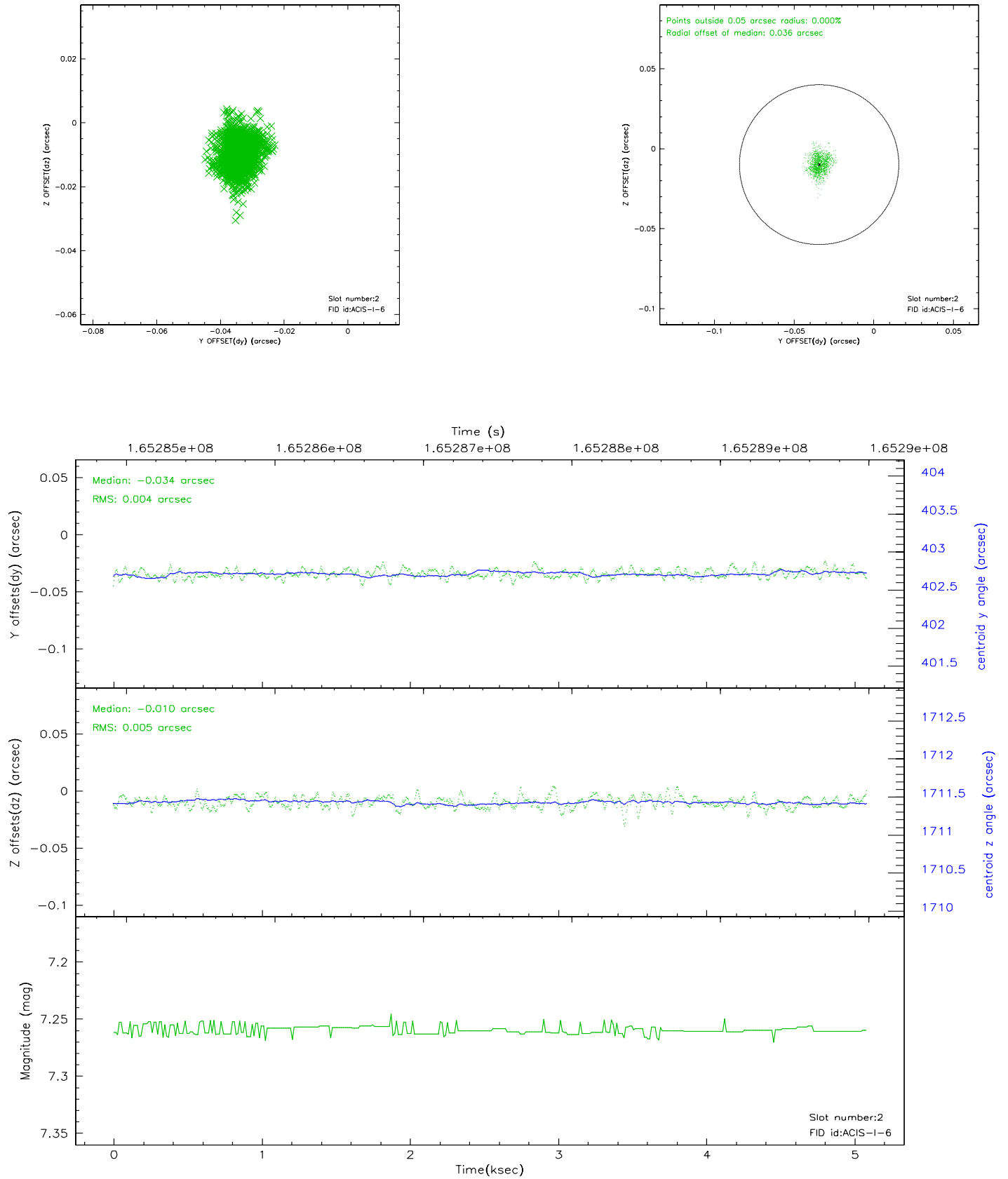
2.5.1 Slot 0



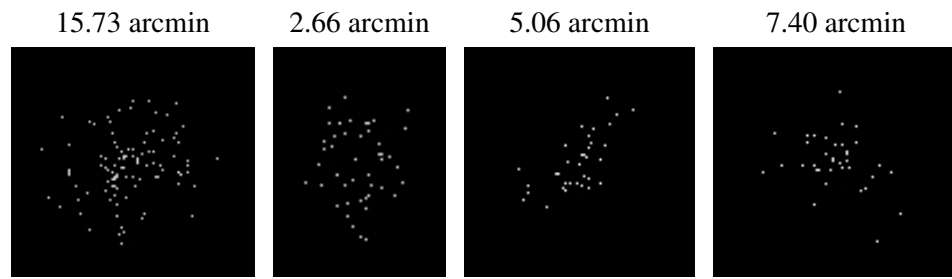
2.5.2 Slot 1



2.5.3 Slot 2



3 Point Sources



A Summary

A.1 Status

V&V Scientist	Jen Lauer
V&V Date (YYYY-MM-DD)	2006.07.30
V&V Edition	1
V&V Disposition and Status	OK
V&V Charge Time	4.674

A.2 Comments