

V&V Reference Report

L2 ASCDS Version : 7.6.8

Observation 3599 - L2 Version 001
Chandra X-Ray Center

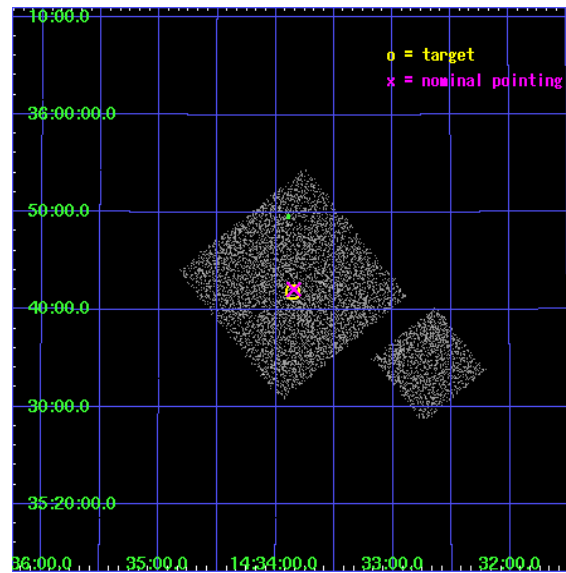
L2 Processing Date : Jul 29 2006

Contents

1	Front	2
2	OBI	3
2.1	OBI	3
2.1.1	Images	3
2.1.2	Bias	3
2.1.3	Parameters	4
2.1.4	Events	4
2.2	Compared Parameters	5
2.3	Aspect	6
2.4	Star Slots	9
2.4.1	Slot 3	9
2.4.2	Slot 4	10
2.4.3	Slot 5	11
2.4.4	Slot 6	12
2.4.5	Slot 7	13
2.5	FID Slots	14
2.5.1	Slot 0	14
2.5.2	Slot 1	15
2.5.3	Slot 2	16
3	Point Sources	17
A	Summary	18
A.1	Status	18
A.2	Comments	18

1 Front

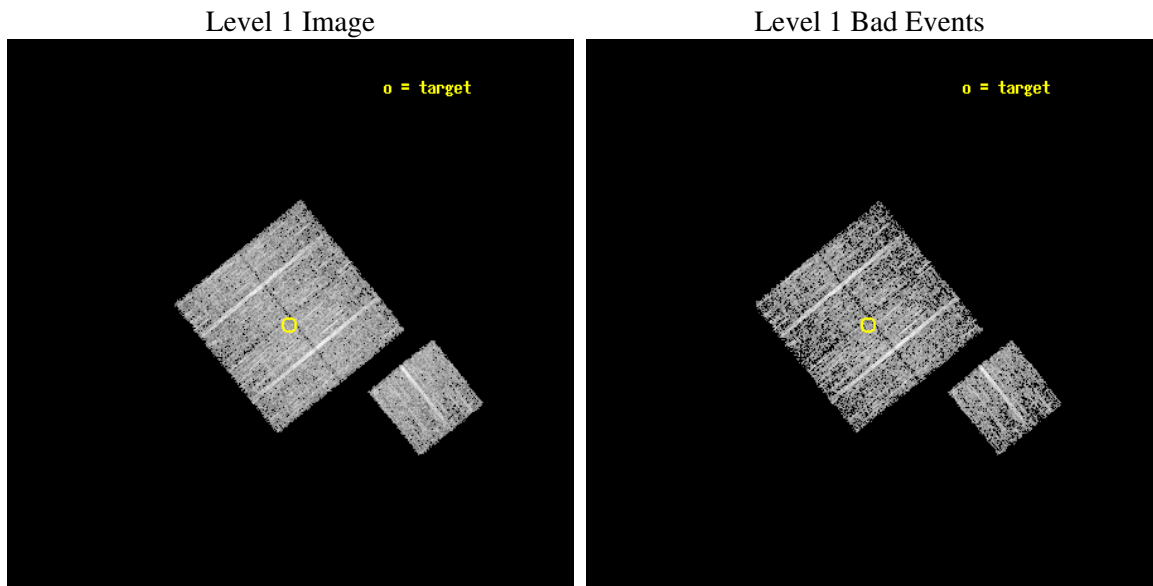
seq_num	900199
obs_id	3599
title	CHANDRA LARGE SCALE SURVEY OF THE NOAO BOOTES DEEP FIELD
observer	Dr. Stephen Murray
object	NOAO FIELD F23
dtcycle	0
cycle	P
ra_targ	218.463931
dec_targ	35.697552
ra_nom	218.46123568225
dec_nom	35.701669145518
roll_nom	141.01024925405
revision	2
ontime	4674.7999910116
livetime	4613.7202875914
ontime0	4674.7999910116
ontime1	4674.7999910116
ontime2	4674.7999910116
ontime3	4674.7999910116
ontime6	4674.7999910116
l2events	9468



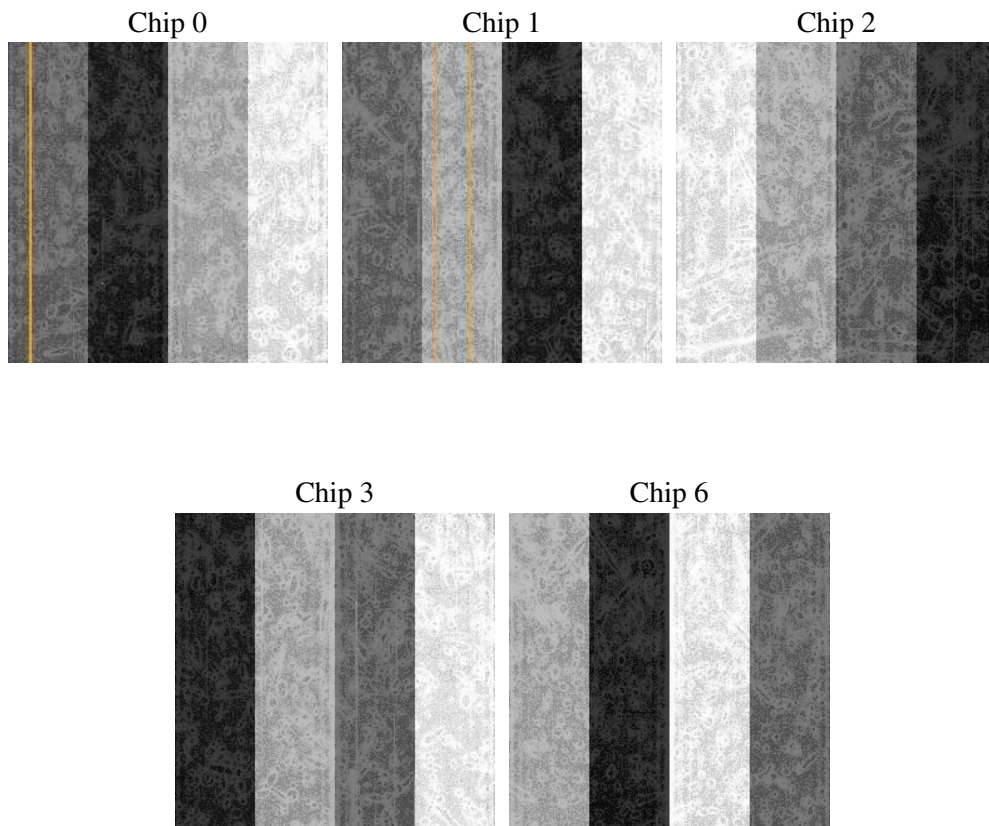
2 OBI

2.1 OBI

2.1.1 Images



2.1.2 Bias



2.1.3 Parameters

obi_num	1
ascdsver	7.6.8
caldsver	3.2.2
date	2006-07-30T02:19:20
revision	2

sched_exp_time	4900.000000
ontime	4680.1013173163
ontime0	4680.1013173163
ontime1	4680.1013173163
ontime2	4680.1013173163
ontime3	4680.1013173163
ontime6	4680.1013173163
l1events	117844

2.1.4 Events

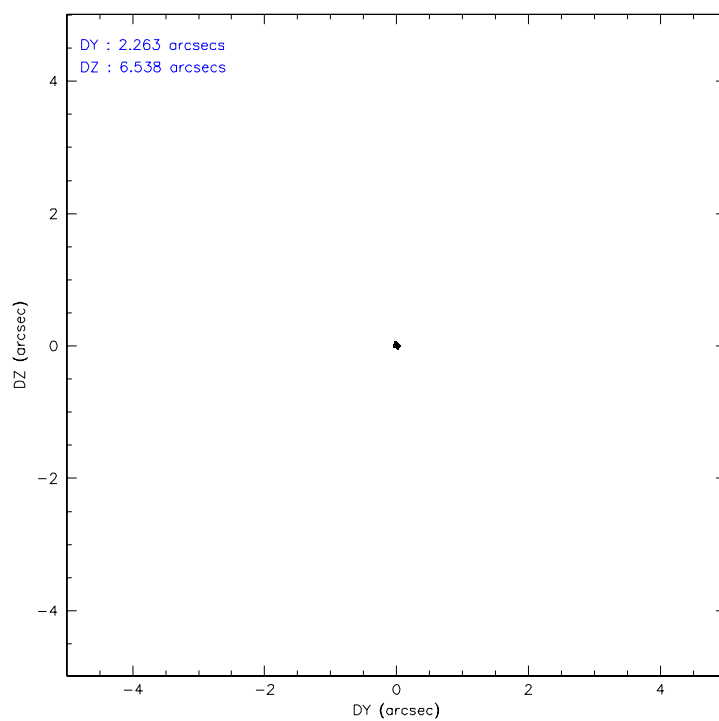
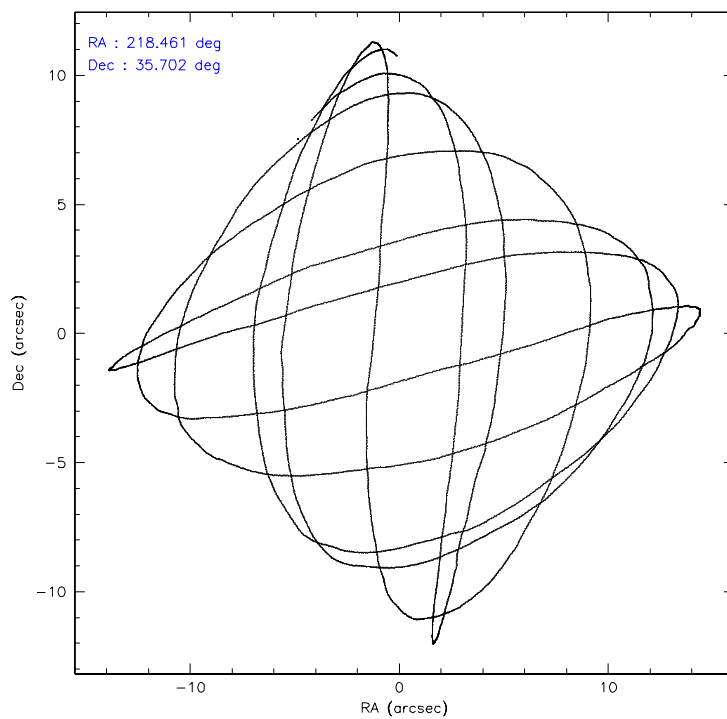
	ccd 0	ccd 1	ccd 2	ccd 3	ccd 6
level 1 events	21423	23212	25155	24896	23158
rejected events	19138	20827	22773	22666	20971
rejected %	89%	89%	90%	91%	90%

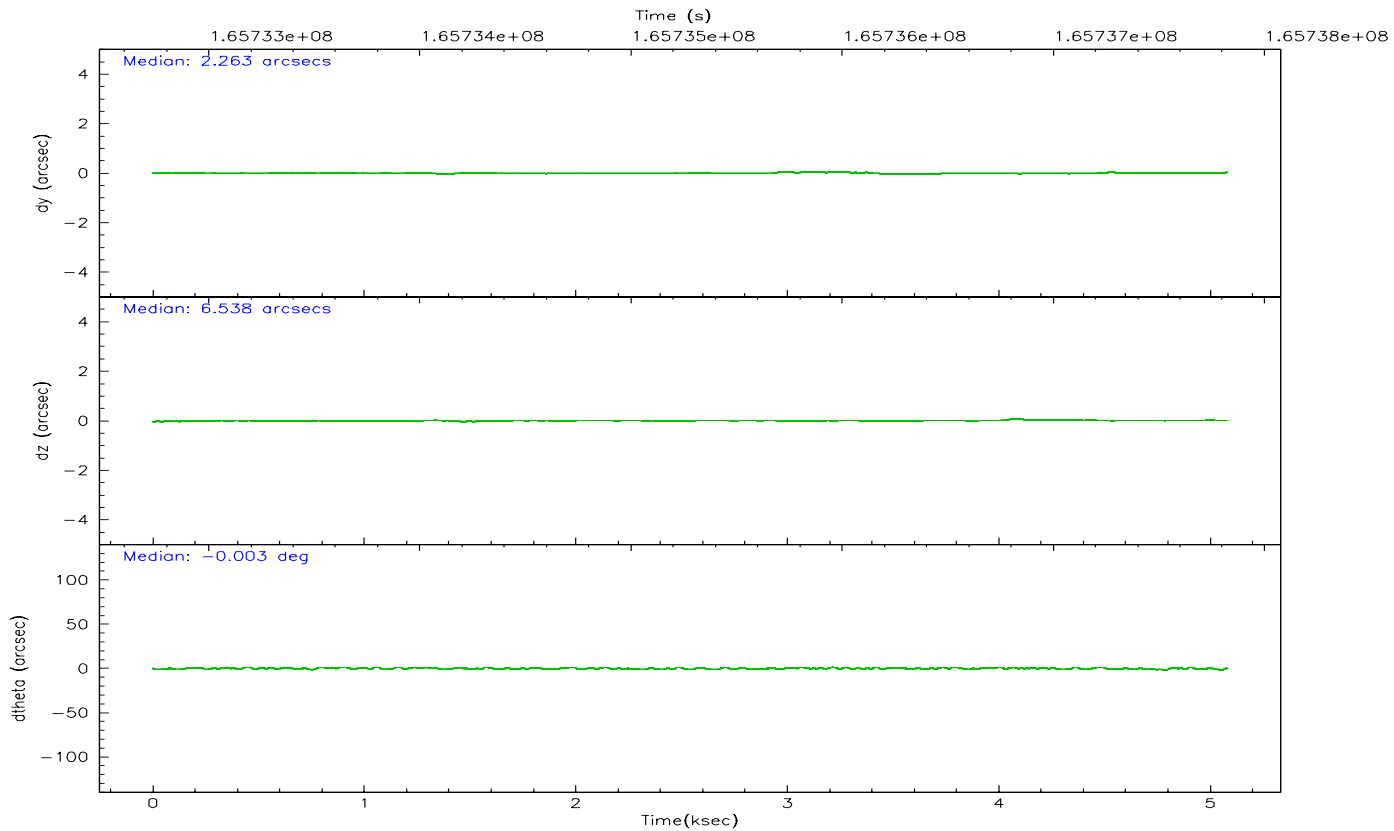
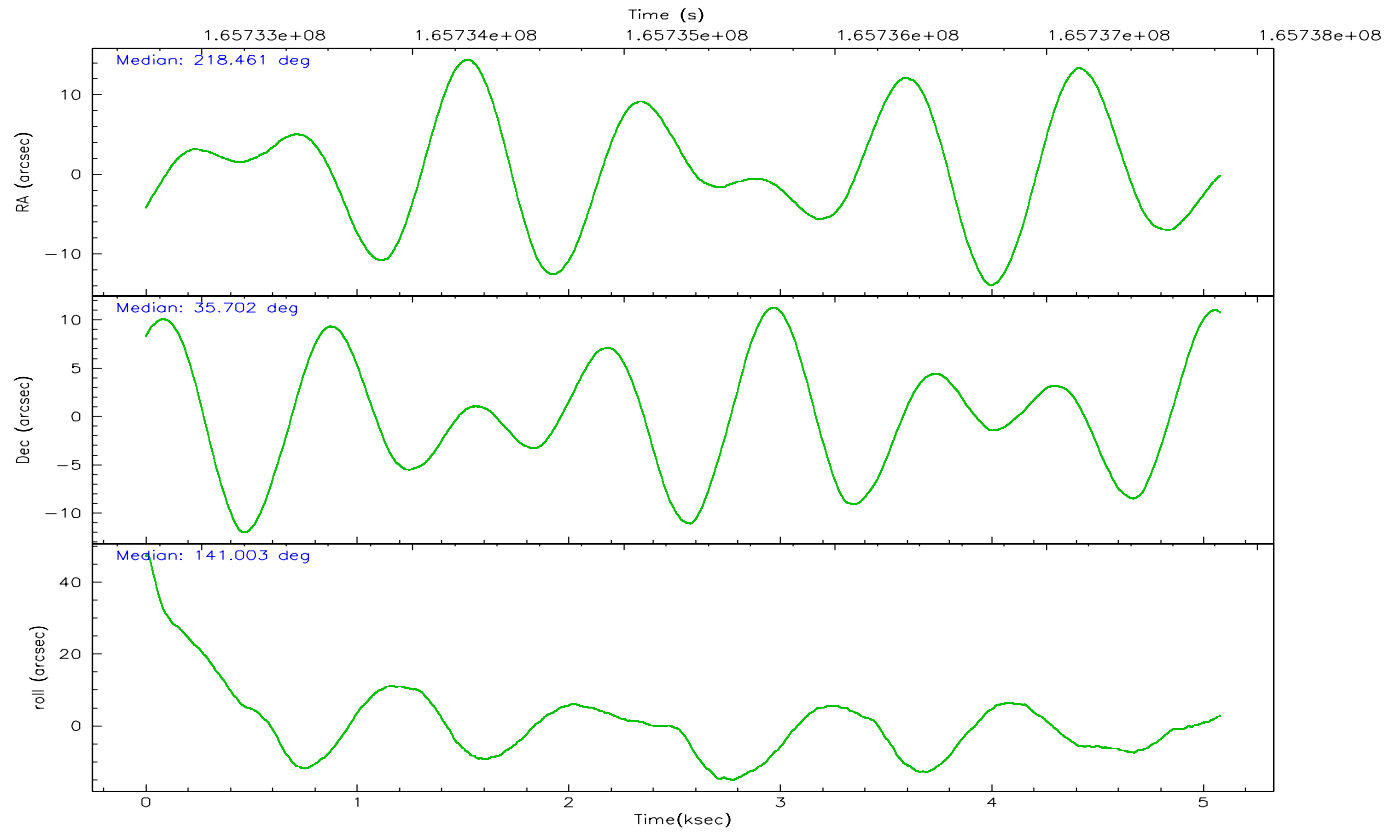
	ccd 0	ccd 1	ccd 2	ccd 3	ccd 6
grade 0 events	858	814	894	837	783
	4%	3%	3%	3%	3%
grade 1 events	7	2	16	16	15
	0%	0%	0%	0%	0%
grade 2 events	518	573	524	465	467
	2%	2%	2%	1%	2%
grade 3 events	250	271	301	239	254
	1%	1%	1%	0%	1%
grade 4 events	237	258	278	280	233
	1%	1%	1%	1%	1%
grade 5 events	675	714	663	769	747
	3%	3%	2%	3%	3%
grade 6 events	424	471	386	410	451
	1%	2%	1%	1%	1%
grade 7 events	18454	20109	22093	21880	20208
	86%	86%	87%	87%	87%

2.2 Compared Parameters

Parameter	Planned	Actual	Parameter	Planned	Actual
Instrument	ACIS	ACIS	Obspar format version number	6	6
Detector	ACIS-01236	ACIS-01236	Obspar file type	PREDICTED	ACTUAL
Grating	NONE	NONE	Obspar update status	NONE	UPDATED
Data mode	VFAINT	VFAINT	On-chip summing requested	N	N
Observation mode	POINTING	POINTING	Subarray requested	NONE	NONE
Pointing RA	218.494569	218.4612356822483	Alternating exposures requested	N	N
Pointing Dec	35.697466	35.70166914551822	Primary exposure time	0.000000	3.1
Pointing Roll	140.782120	141.0102492540545			
SIM focus pos (mm)	-0.782348	-0.7809083437167272			
SIM defocus (mm)	0	0.001439871863259334			
SIM translation stage pos (mm)	-233.592463	-233.5874344608287			
SIM translation stage offset (mm)	0	-0.005018542100998502			
Observation start time	165732917.184000	165732541.60186			
Observation start date	2003-04-03T04:54:13	2003-04-03T04:49:01			
Observation end time	165737817.184000	165738009.97709			
Observation end date	2003-04-03T06:15:53	2003-04-03T06:20:09			
Read mode	TIMED	TIMED			

2.3 Aspect



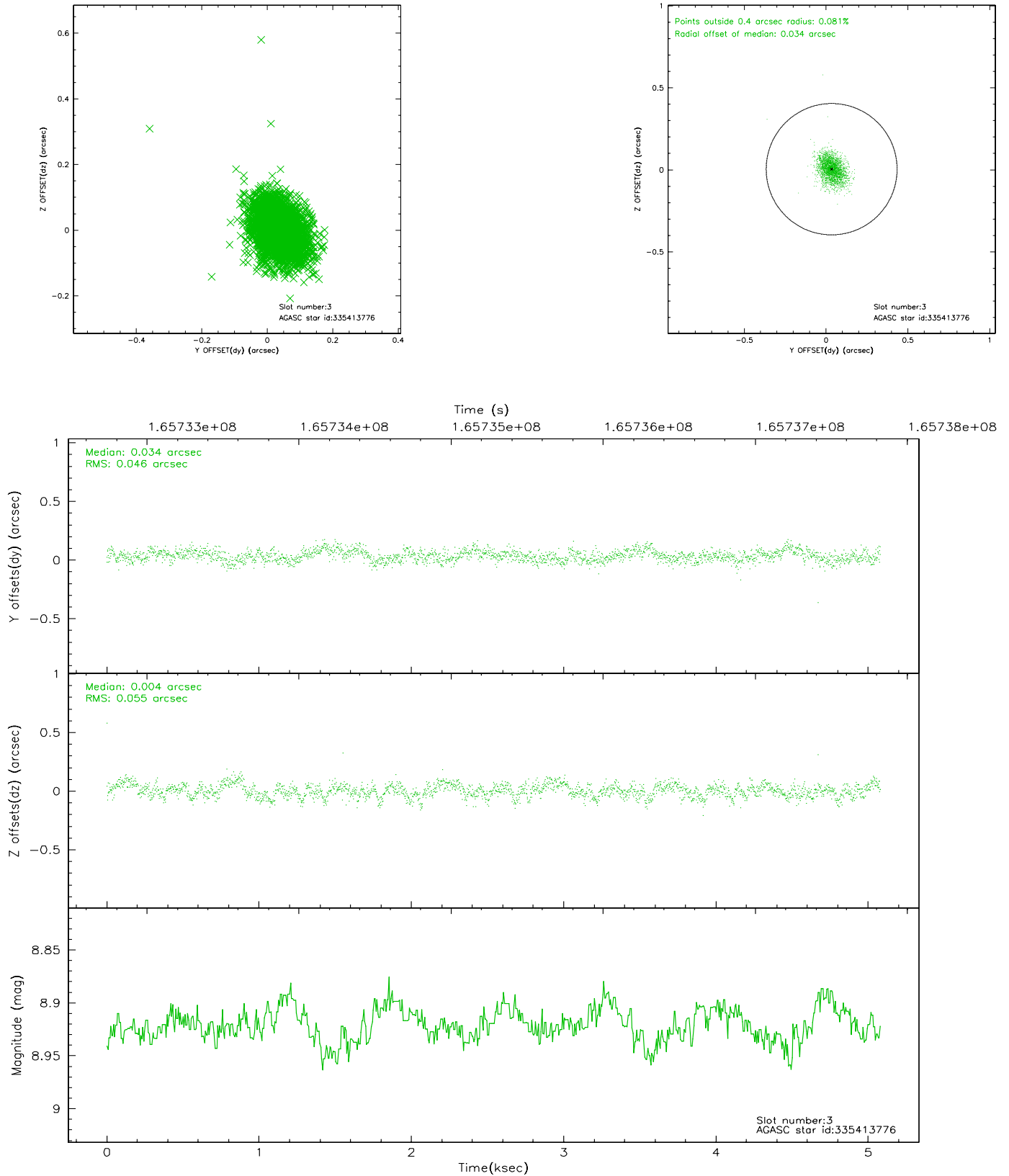


Slot Statistics

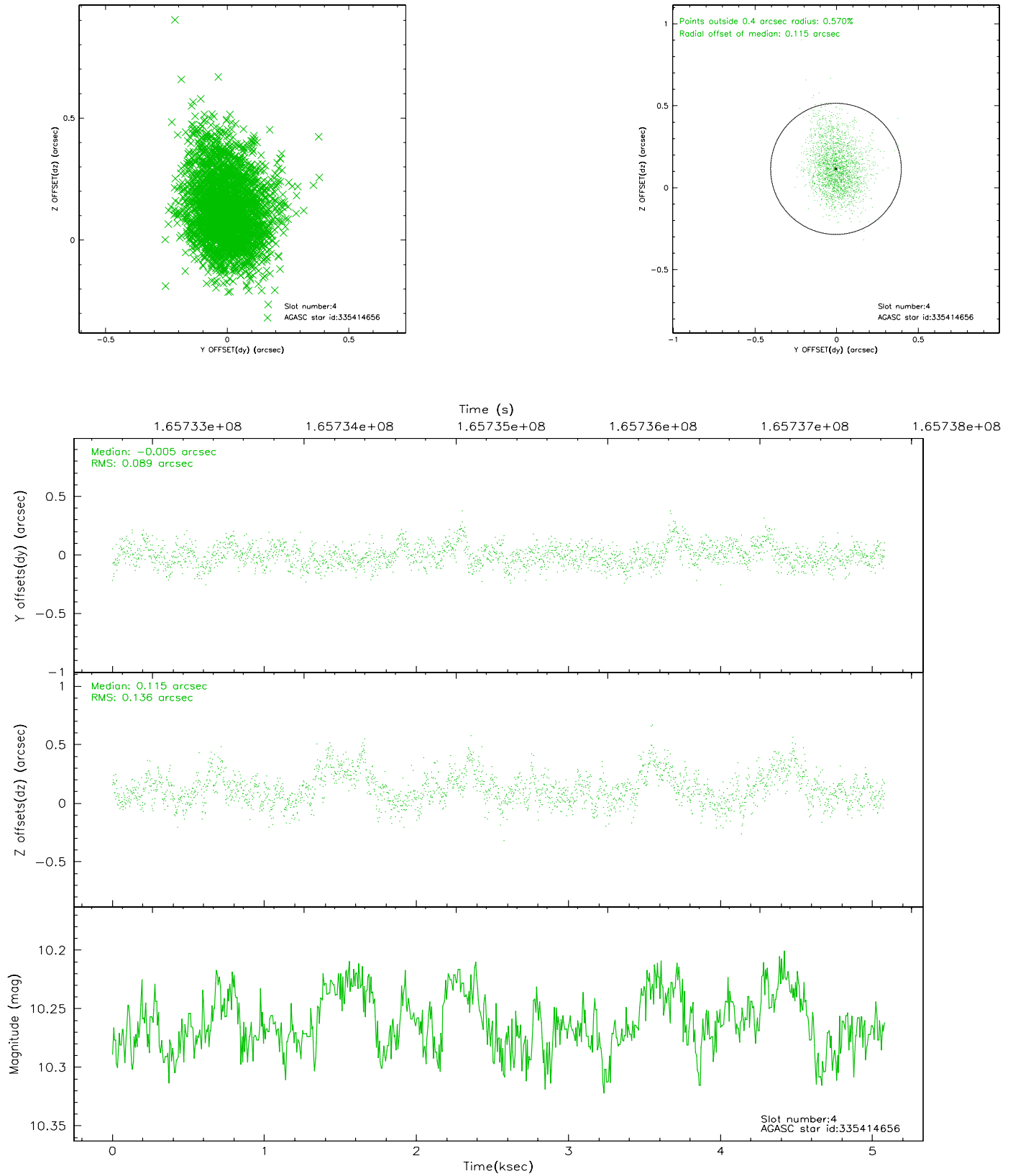
slot	status	id	mag	n_pts	med_dy	med_dz	dr1	dr2	ra	dec	mean_y	mean_z
0	FID	ACIS-I-2	7.16	1239	-0.038	-0.067	0.009	0.015	0.000000	0.000000	-756.66	-836.36
1	FID	ACIS-I-4	7.19	1239	0.012	0.048	0.005	0.009	0.000000	0.000000	2156.90	1069.35
2	FID	ACIS-I-5	7.23	1239	-0.075	0.088	0.009	0.014	0.000000	0.000000	-1808.99	1068.58
3	GUIDE	335413776	8.92	2478	0.034	0.004	0.075	0.123	218.421411	36.051962	972.37	-853.93
4	GUIDE	335414656	10.26	2454	-0.005	0.115	0.168	0.289	218.885865	36.185124	231.71	-2080.72
5	GUIDE	335421696	8.95	2477	-0.006	-0.049	0.080	0.134	218.045699	35.772449	1188.28	616.80
6	GUIDE	335422272	9.49	2464	-0.043	-0.070	0.114	0.176	217.586135	35.522660	1672.41	2161.28
7	GUIDE	335549864	7.52	2477	0.013	-0.001	0.062	0.097	219.286726	35.929745	-1253.32	-2114.37

2.4 Star Slots

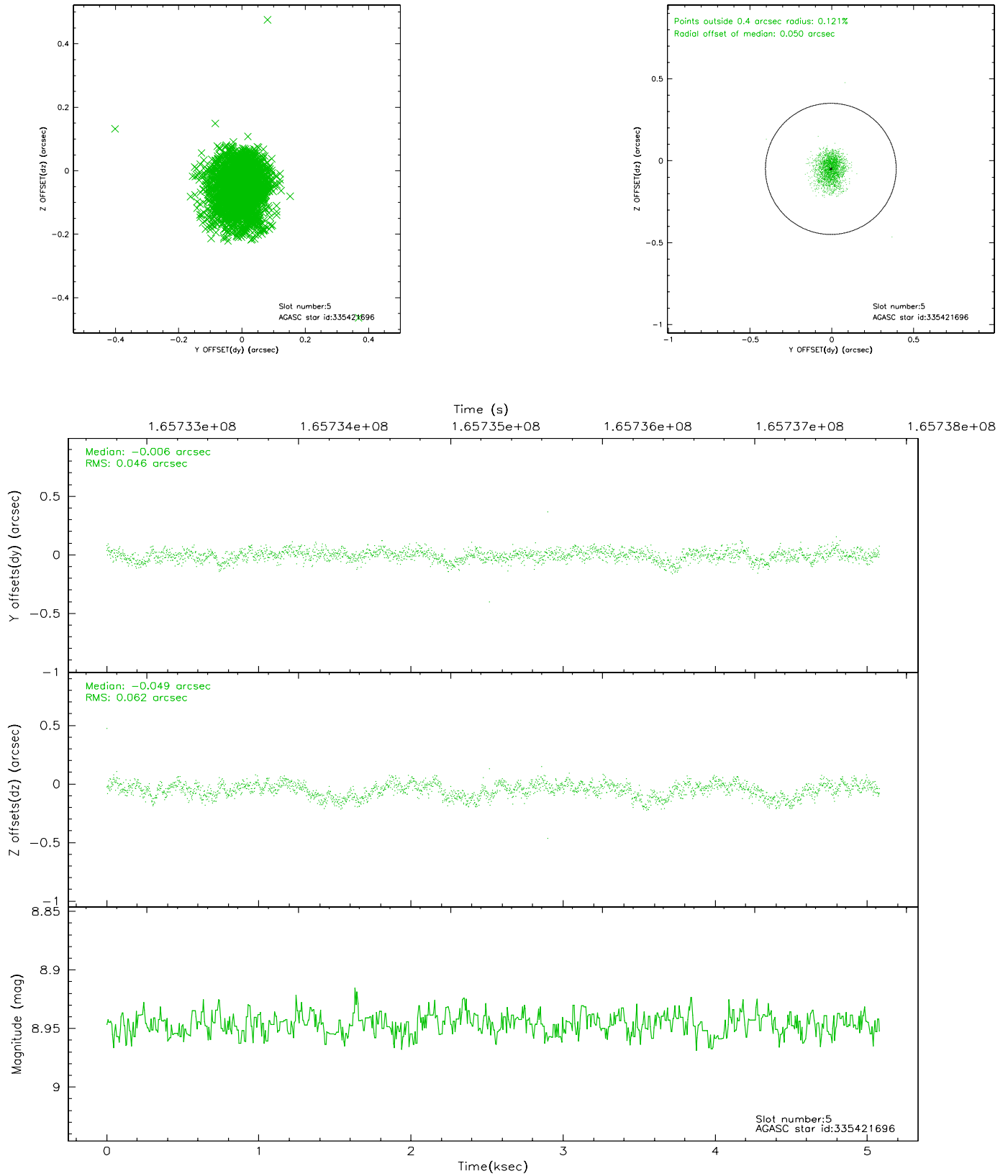
2.4.1 Slot 3



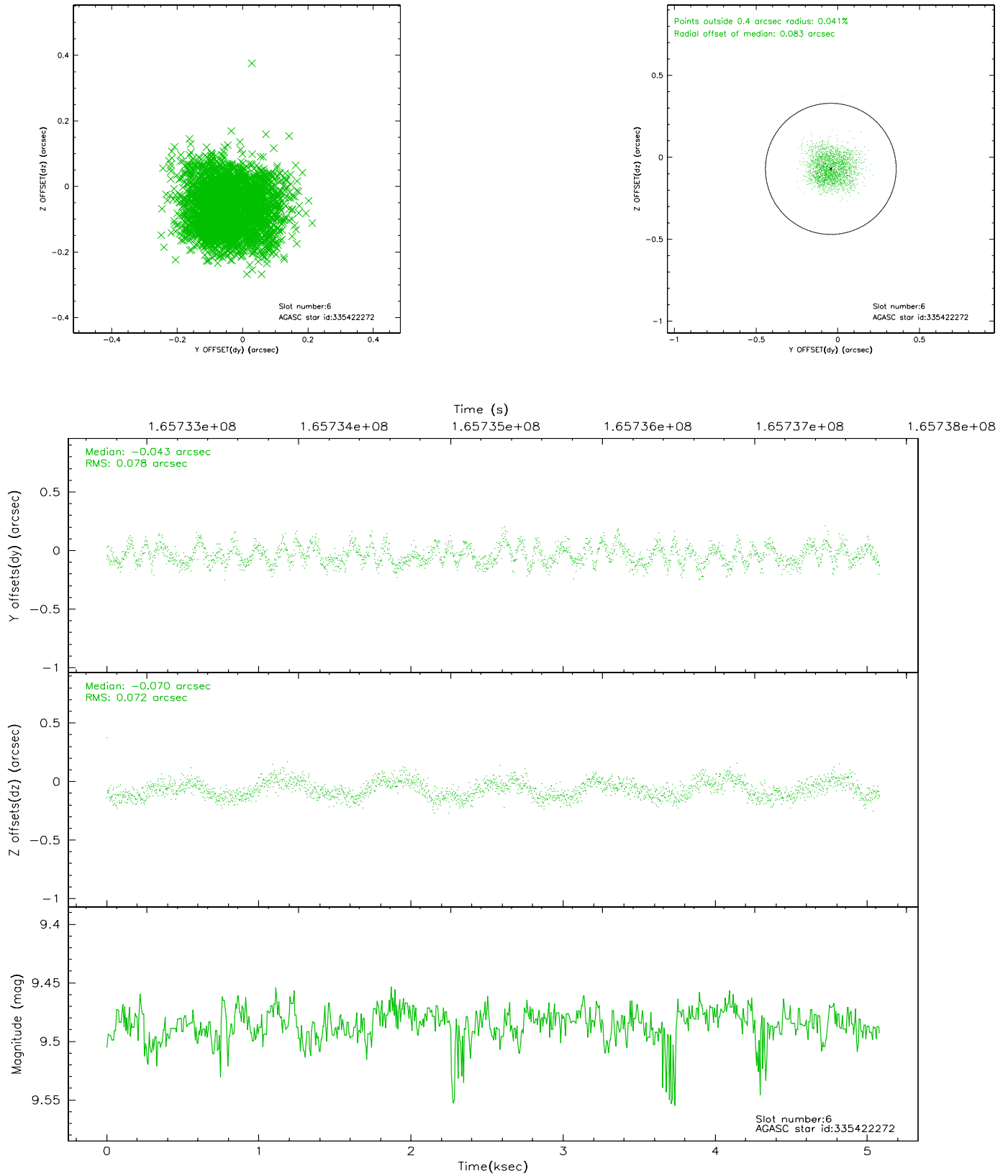
2.4.2 Slot 4



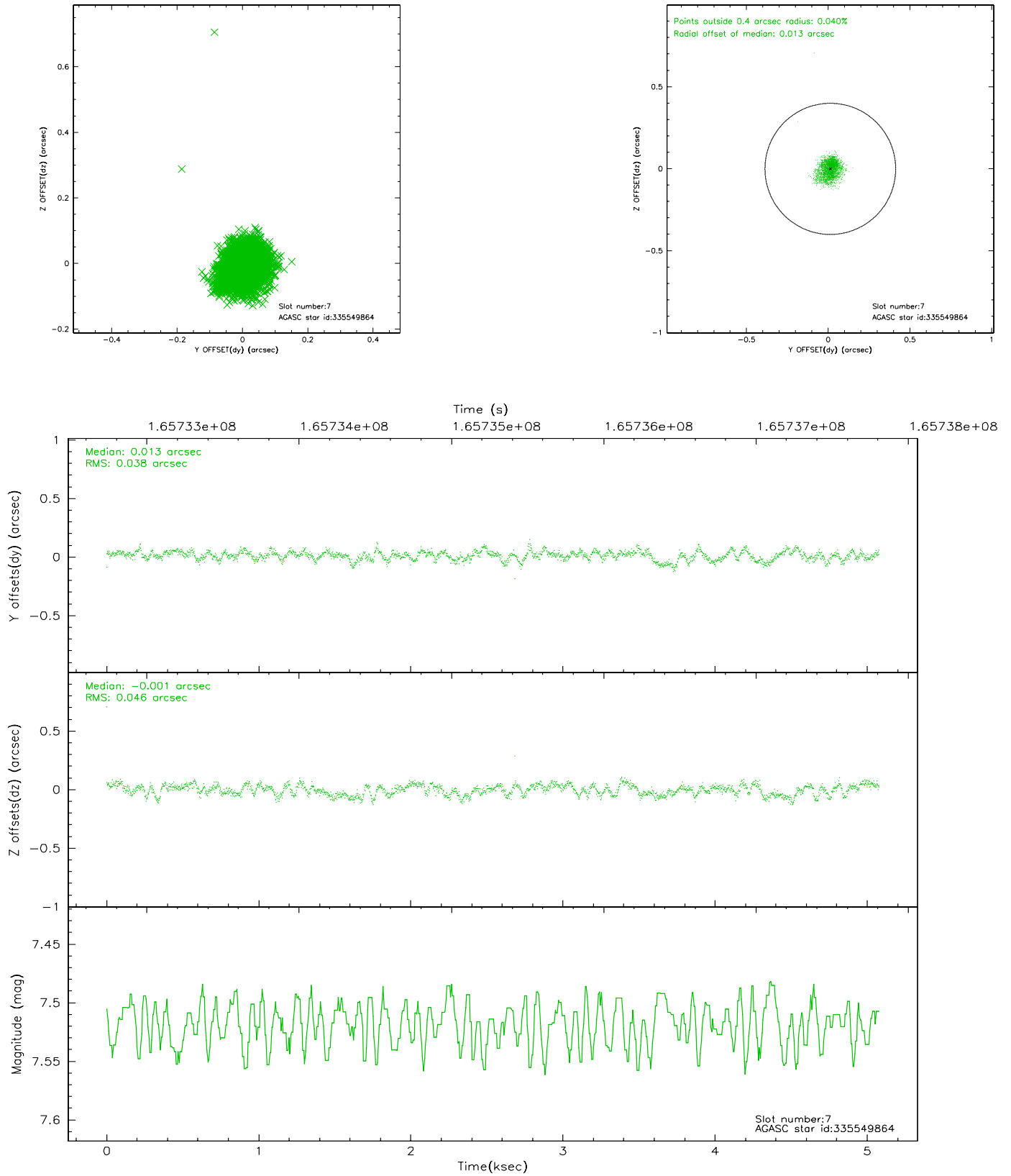
2.4.3 Slot 5



2.4.4 Slot 6

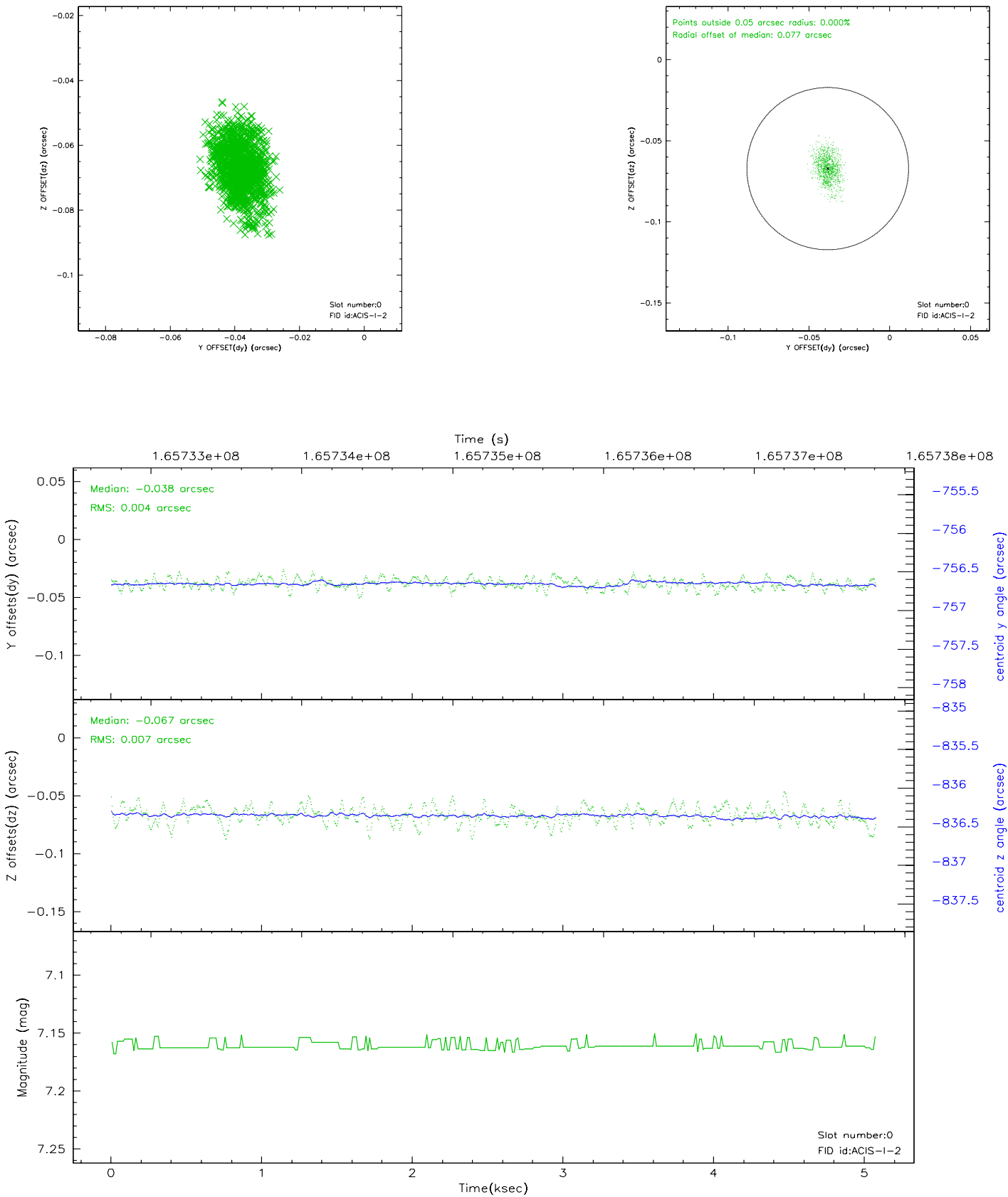


2.4.5 Slot 7

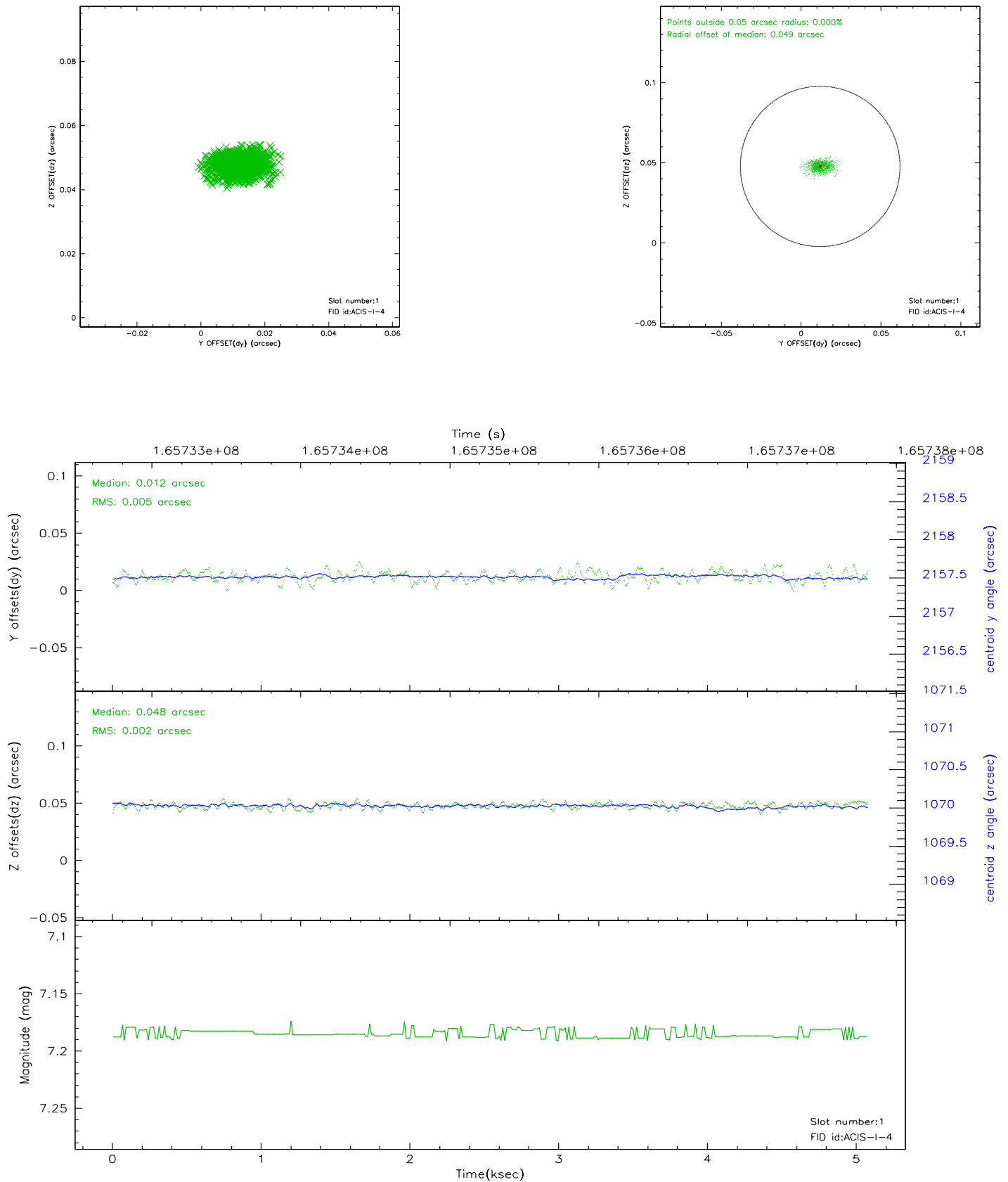


2.5 FID Slots

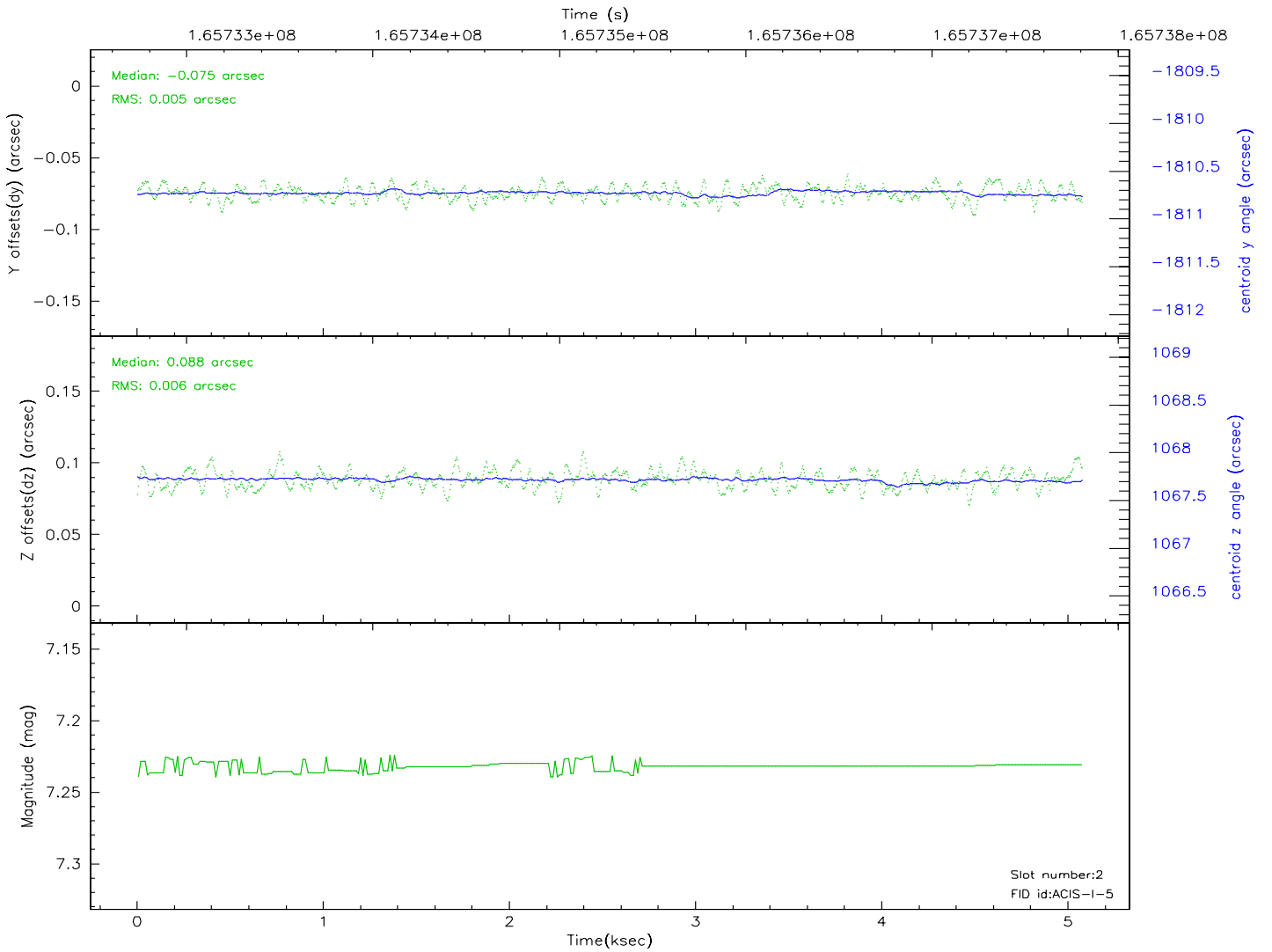
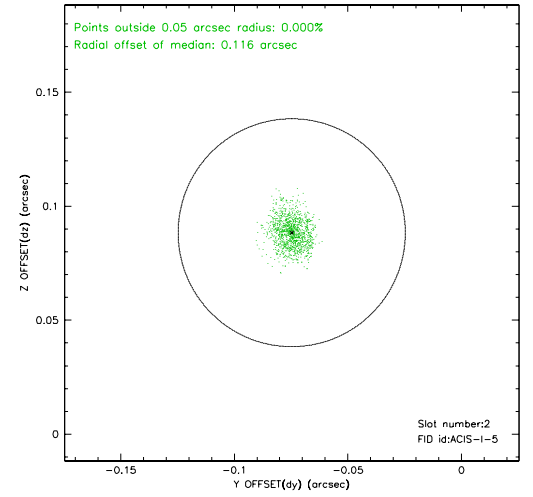
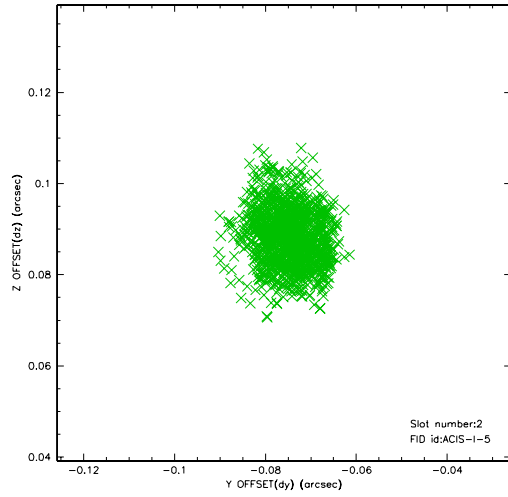
2.5.1 Slot 0



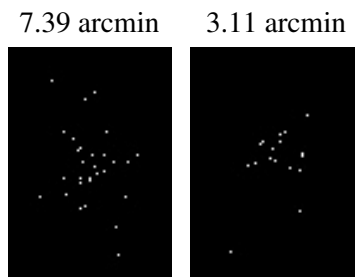
2.5.2 Slot 1



2.5.3 Slot 2



3 Point Sources



A Summary

A.1 Status

V&V Scientist	Jen Lauer
V&V Date (YYYY-MM-DD)	2006.07.30
V&V Edition	1
V&V Disposition and Status	OK
V&V Charge Time	4.674

A.2 Comments