

V&V Reference Report

L2 ASCDS Version : 7.6.8

Observation 4211 - L2 Version 001
Chandra X-Ray Center

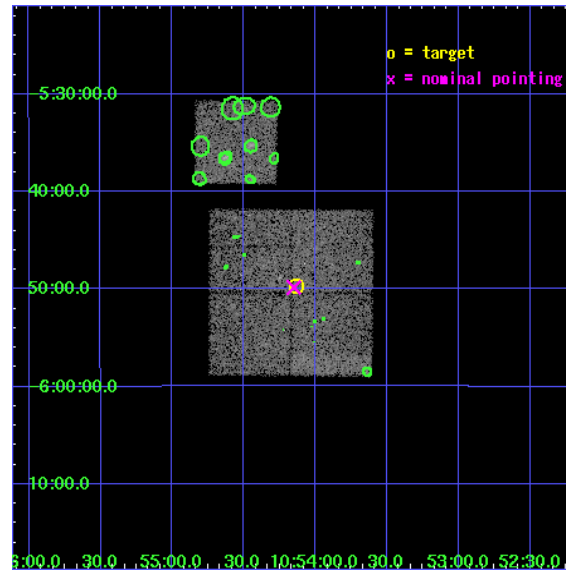
L2 Processing Date : Jul 22 2006

Contents

1	Front	2
2	OBI	3
2.1	OBI	3
2.1.1	Images	3
2.1.2	Bias	3
2.1.3	Parameters	4
2.1.4	Events	4
2.2	Compared Parameters	5
2.3	Aspect	6
2.4	Star Slots	9
2.4.1	Slot 3	9
2.4.2	Slot 4	10
2.4.3	Slot 5	11
2.4.4	Slot 6	12
2.4.5	Slot 7	13
2.5	FID Slots	14
2.5.1	Slot 0	14
2.5.2	Slot 1	15
2.5.3	Slot 2	16
3	Point Sources	17
A	Summary	18
A.1	Status	18
A.2	Comments	18

1 Front

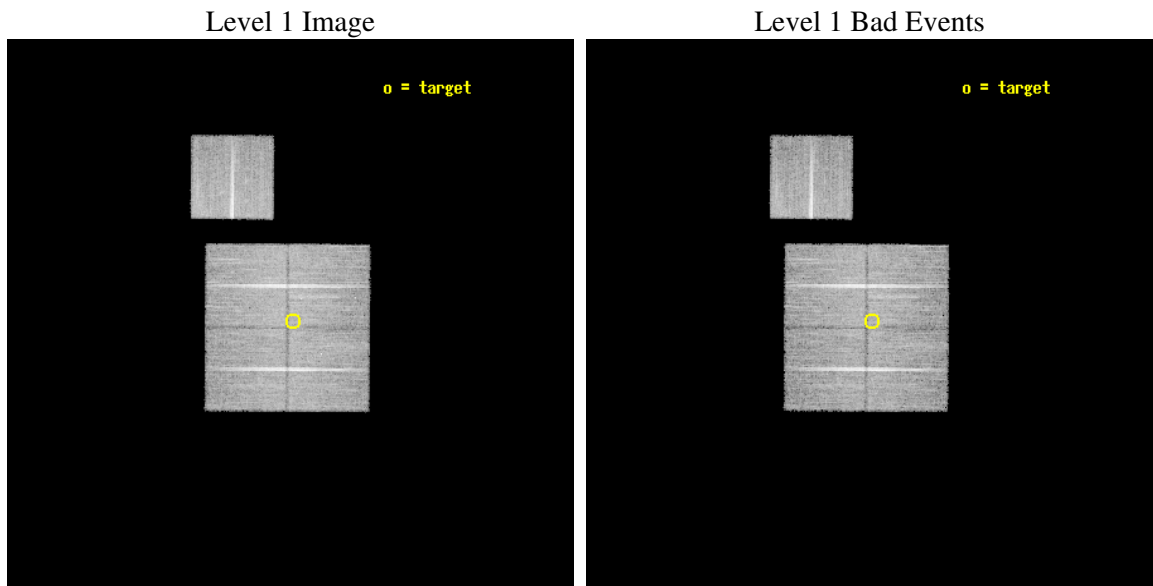
seq_num	800367
obs_id	4211
title	CHANDRA OBSERVATIONS OF DLS SHEAR-SELECTED CLUSTERS
observer	Prof. John Hughes
object	DLS J1054-0549
dtcycle	0
cycle	P
ra_targ	163.533333
dec_targ	-5.828889
ra_nom	163.53761196301
dec_nom	-5.8306648269054
roll_nom	0.39616496696631
revision	2
ontime	20577.759000093
livetime	20308.895429631
ontime0	20577.758980185
ontime1	20580.899960428
ontime2	20577.758980215
ontime3	20577.759000093
ontime6	20580.899960428
l2events	45968



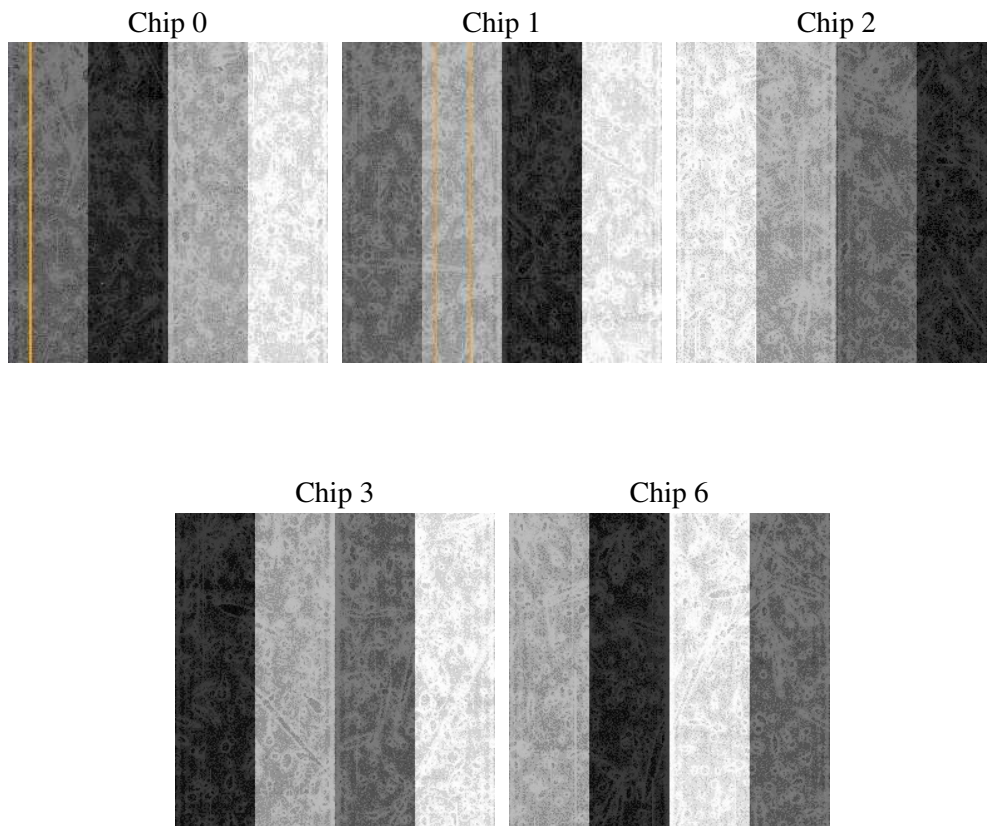
2 OBI

2.1 OBI

2.1.1 Images



2.1.2 Bias



2.1.3 Parameters

obi_num	0
ascdsver	7.6.8
caldbver	3.2.2
date	2006-07-22T12:28:51
revision	2

sched_exp_time	20400.000000
ontime	20652.134008467
ontime0	20652.133988559
ontime1	20655.274968803
ontime2	20652.134008527
ontime3	20652.134008467
ontime6	20655.274988741
llevents	555137

2.1.4 Events

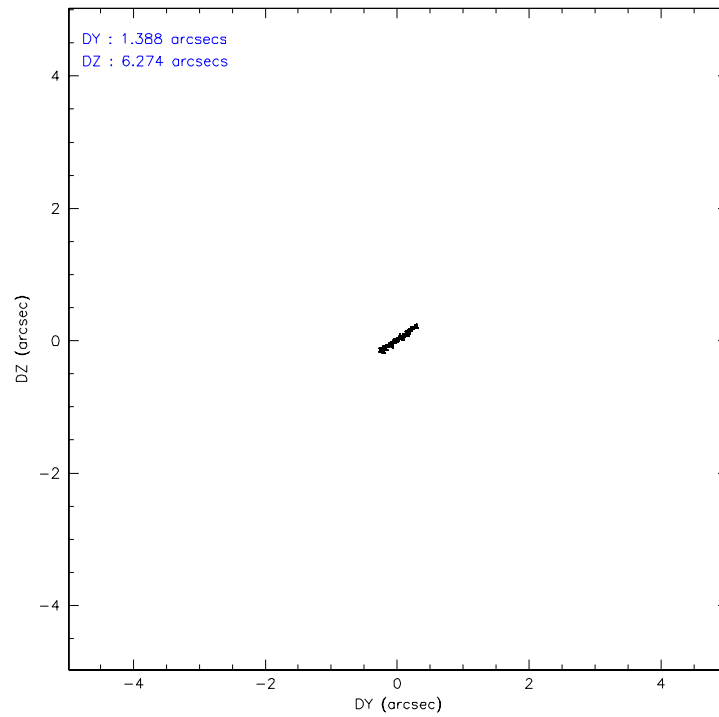
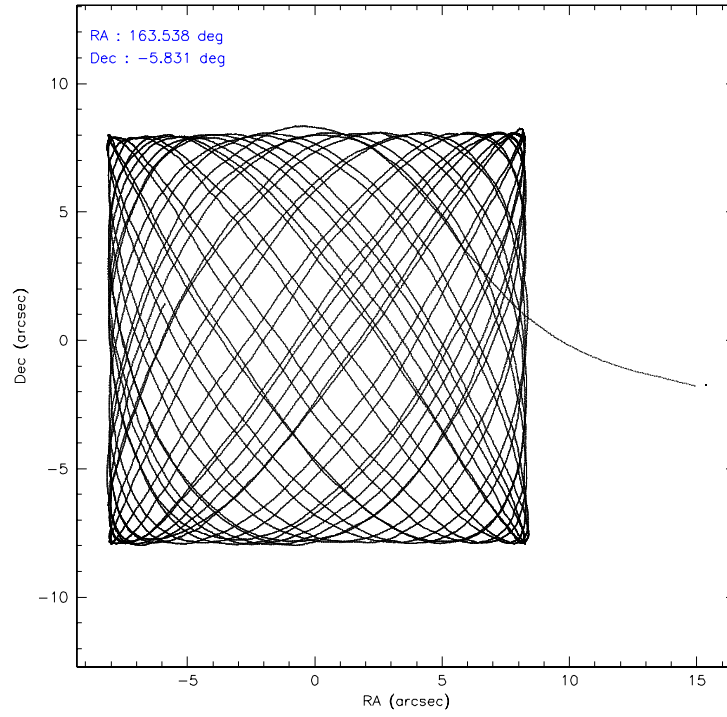
	ccd 0	ccd 1	ccd 2	ccd 3	ccd 6
level 1 events	103680	107259	119180	111982	113036
rejected events	93058	94885	108269	101710	101623
rejected %	89%	88%	90%	90%	89%

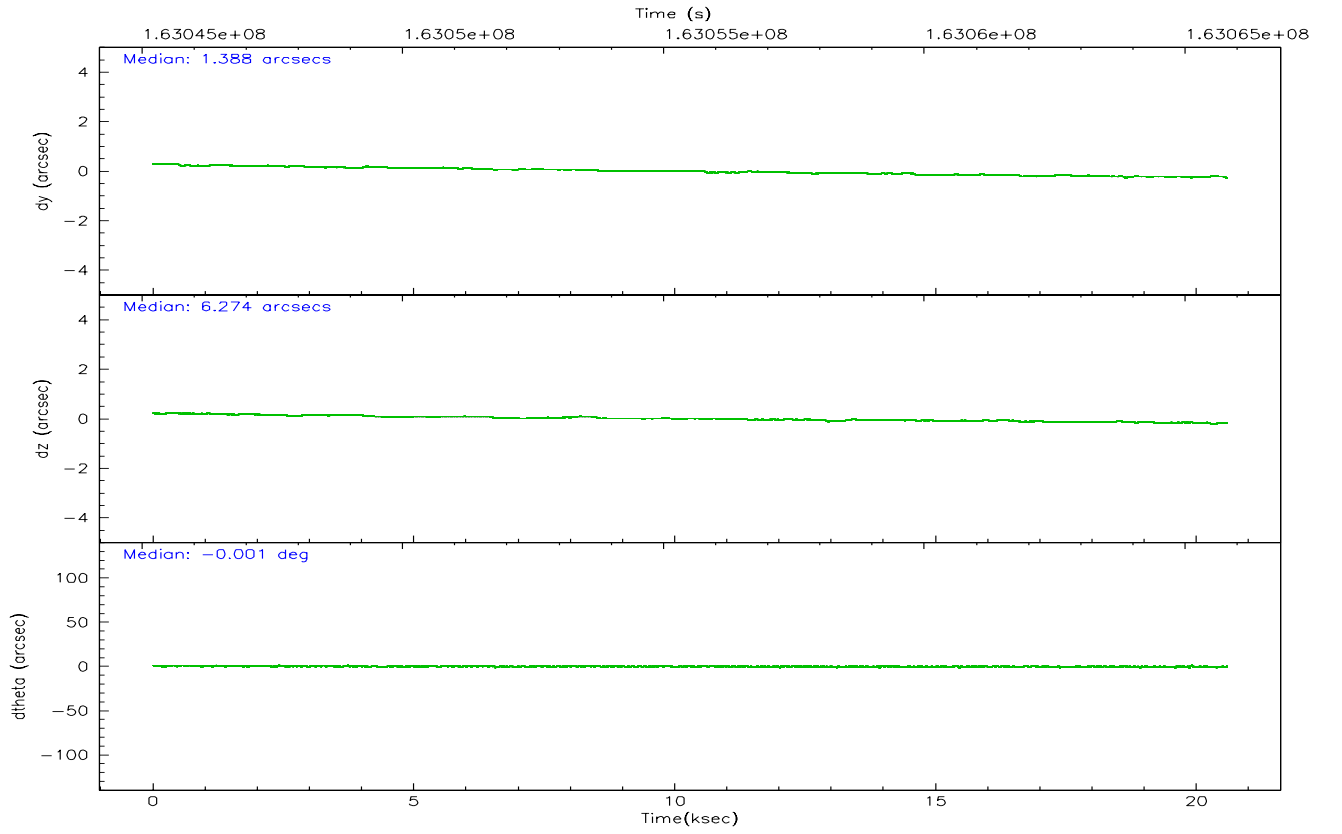
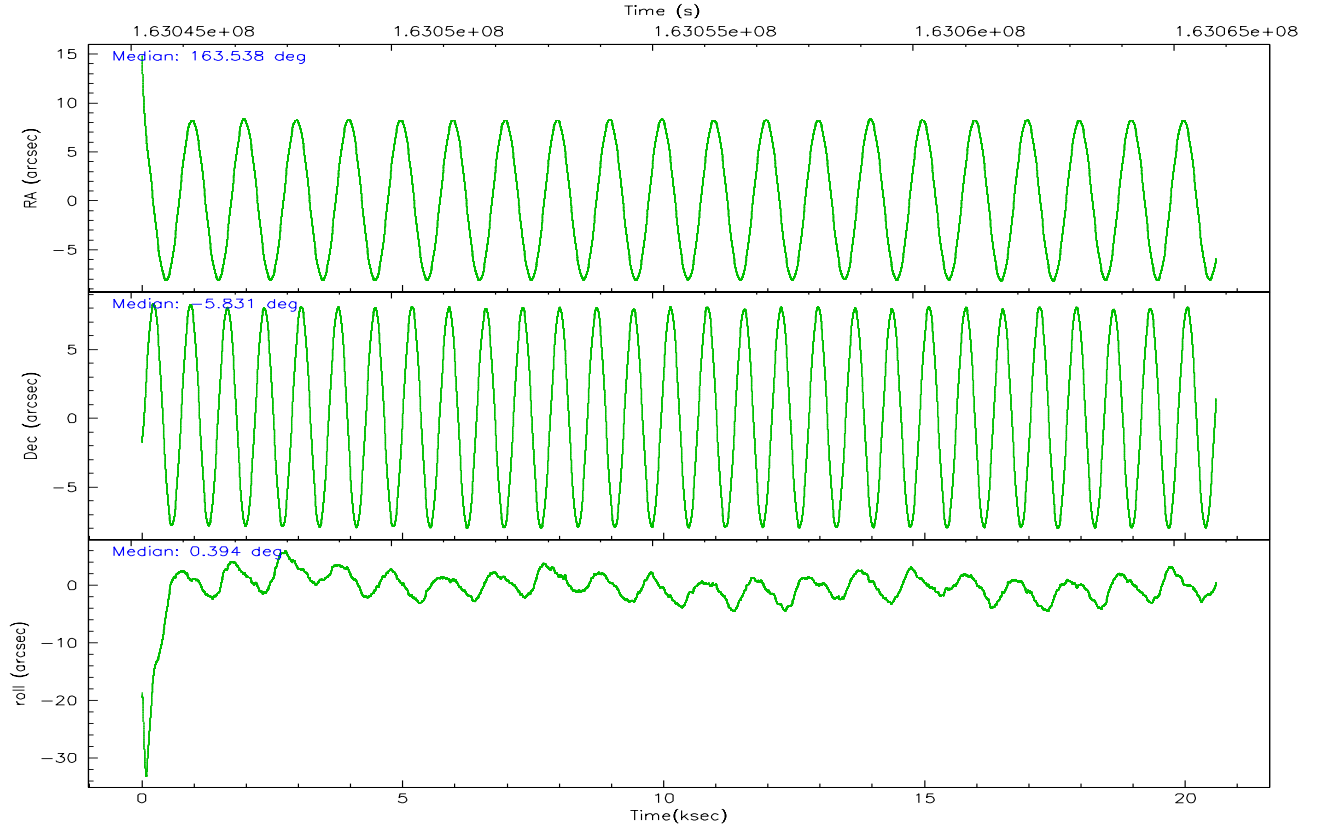
	ccd 0	ccd 1	ccd 2	ccd 3	ccd 6
grade 0 events	3639	4520	3986	3729	4132
	3%	4%	3%	3%	3%
grade 1 events	47	39	50	59	61
	0%	0%	0%	0%	0%
grade 2 events	2485	2542	2505	2182	2357
	2%	2%	2%	1%	2%
grade 3 events	1223	1458	1246	1218	1356
	1%	1%	1%	1%	1%
grade 4 events	1216	1460	1233	1209	1285
	1%	1%	1%	1%	1%
grade 5 events	3856	4112	3813	4262	4435
	3%	3%	3%	3%	3%
grade 6 events	2099	2448	1976	1971	2323
	2%	2%	1%	1%	2%
grade 7 events	89115	90680	104371	97352	97087
	85%	84%	87%	86%	85%

2.2 Compared Parameters

Parameter	Planned	Actual	Parameter	Planned	Actual
Instrument	ACIS	ACIS	Obspar format version number	6	6
Detector	ACIS-01236	ACIS-01236	Obspar file type	PREDICTED	ACTUAL
Grating	NONE	NONE	Obspar update status	NONE	UPDATED
Data mode	VFAINT	VFAINT	On-chip summing requested	N	N
Observation mode	POINTING	POINTING	Subarray requested	NONE	NONE
Pointing RA	163.513950	163.5376119630126	Alternating exposures requested	N	N
Pointing Dec	-5.844619	-5.830664826905445	Primary exposure time	0.000000	3.1
Pointing Roll	0.185066	0.3961649669663064			
SIM focus pos (mm)	-0.782348	-0.7809083437167272			
SIM defocus (mm)	0	0.001439871863259334			
SIM translation stage pos (mm)	-233.592463	-233.5874344608287			
SIM translation stage offset (mm)	0	-0.005018542100998502			
Observation start time	163045406.184000	163044379.05112			
Observation start date	2003-03-03T02:22:22	2003-03-03T02:06:19			
Observation end time	163065806.184000	163066423.21454			
Observation end date	2003-03-03T08:02:22	2003-03-03T08:13:43			
Read mode	TIMED	TIMED			

2.3 Aspect



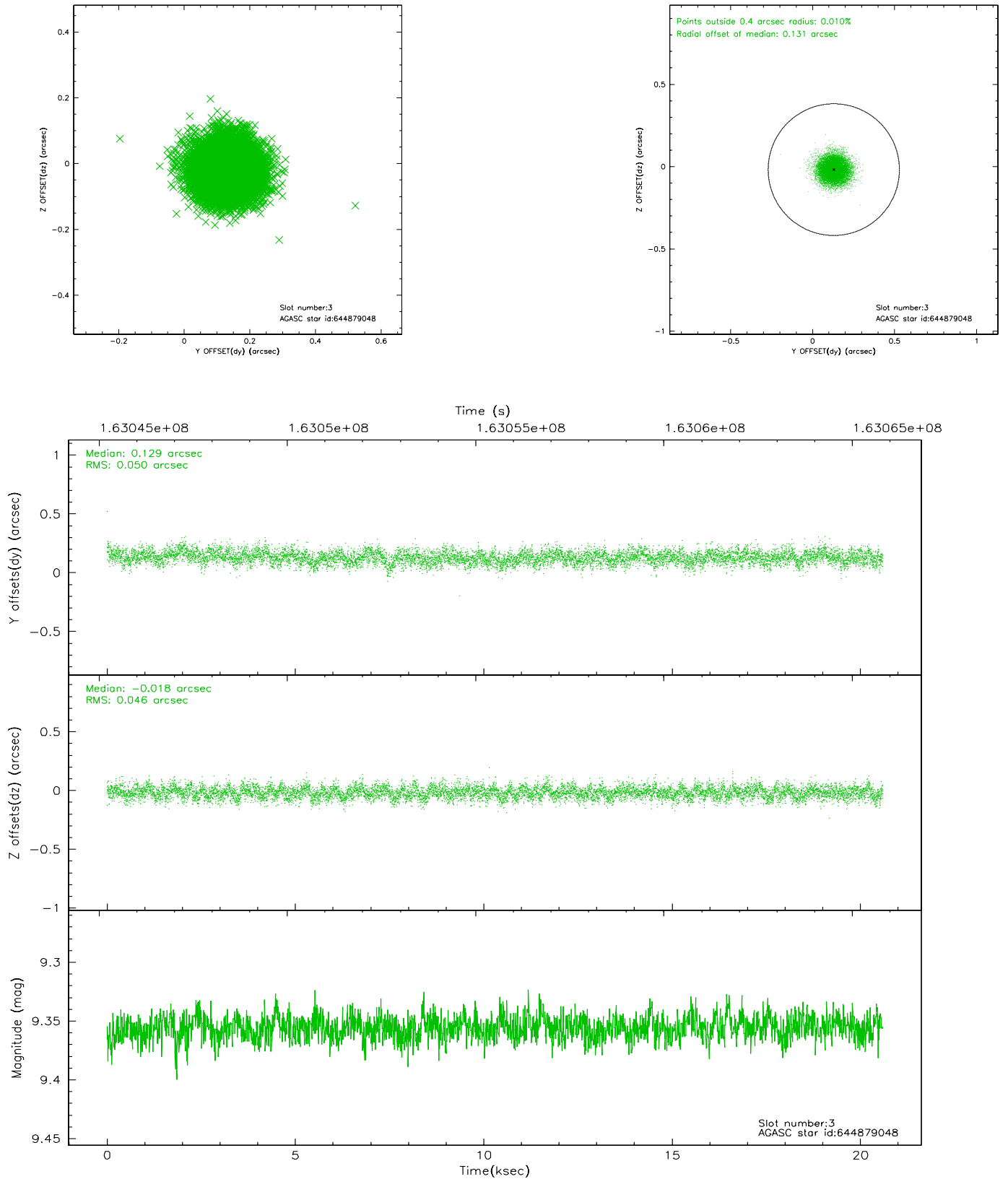


Slot Statistics

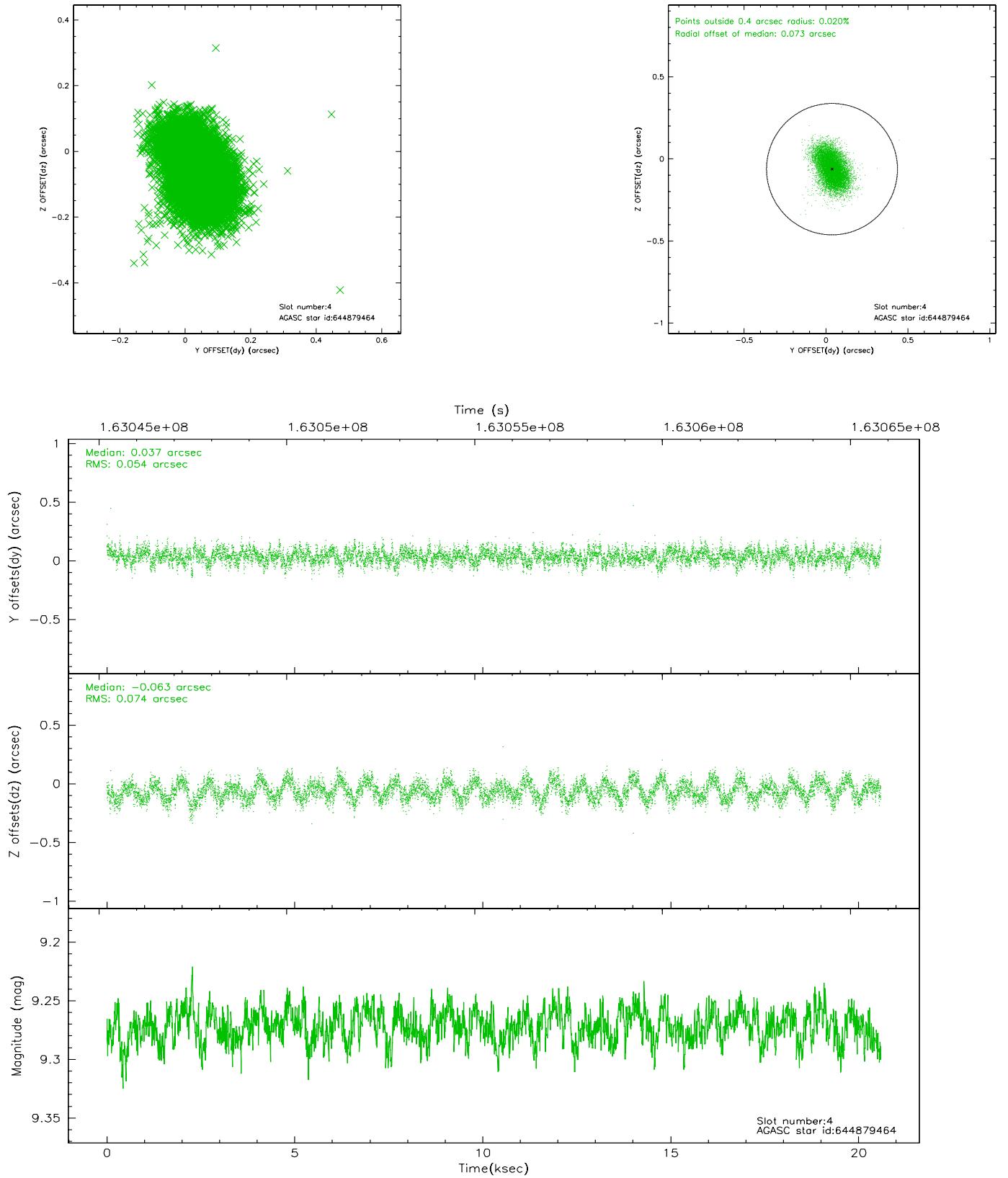
slot	status	id	mag	n_pts	med_dy	med_dz	dr1	dr2	ra	dec	mean_y	mean_z
0	FID	ACIS-I-1	7.25	5022	-0.014	0.023	0.008	0.018	0.000000	0.000000	938.42	-829.65
1	FID	ACIS-I-5	7.24	5022	-0.055	0.036	0.008	0.023	0.000000	0.000000	-1809.59	1067.81
2	FID	ACIS-I-6	7.26	5022	-0.022	0.012	0.009	0.022	0.000000	0.000000	403.81	1712.45
3	GUIDE	644879048	9.36	10038	0.129	-0.018	0.073	0.117	162.964974	-5.788659	-1965.24	206.89
4	GUIDE	644879464	9.27	10040	0.037	-0.063	0.097	0.159	163.397635	-5.401358	-411.71	1597.11
5	GUIDE	644880304	9.30	10038	0.087	0.003	0.084	0.138	163.275517	-5.533070	-850.53	1124.48
6	GUIDE	644882264	9.16	9967	-0.183	0.010	0.079	0.127	164.155509	-5.895993	2296.76	-193.34
7	GUIDE	644883792	10.12	10030	-0.071	0.068	0.129	0.204	164.124196	-5.883086	2185.28	-146.43

2.4 Star Slots

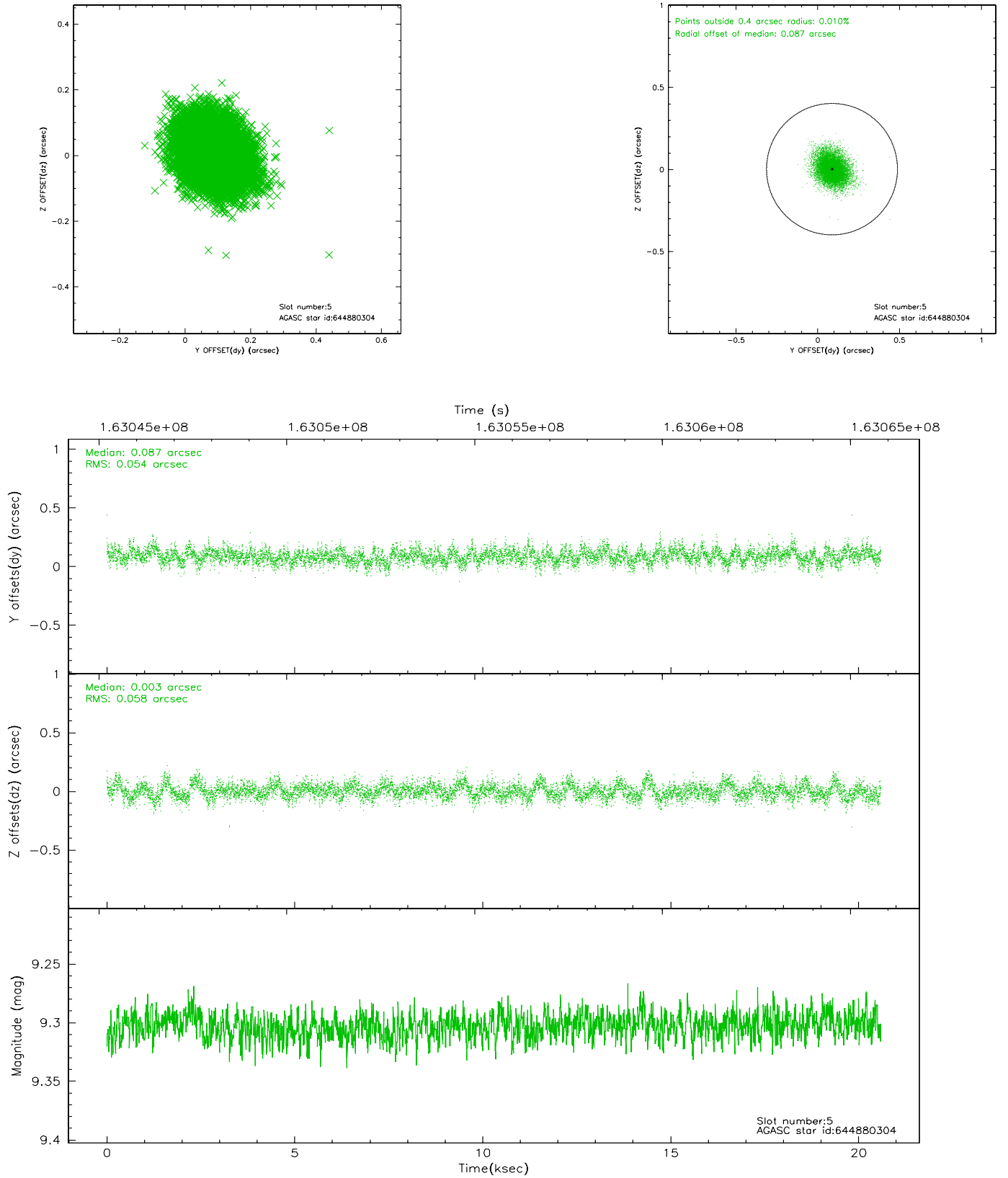
2.4.1 Slot 3



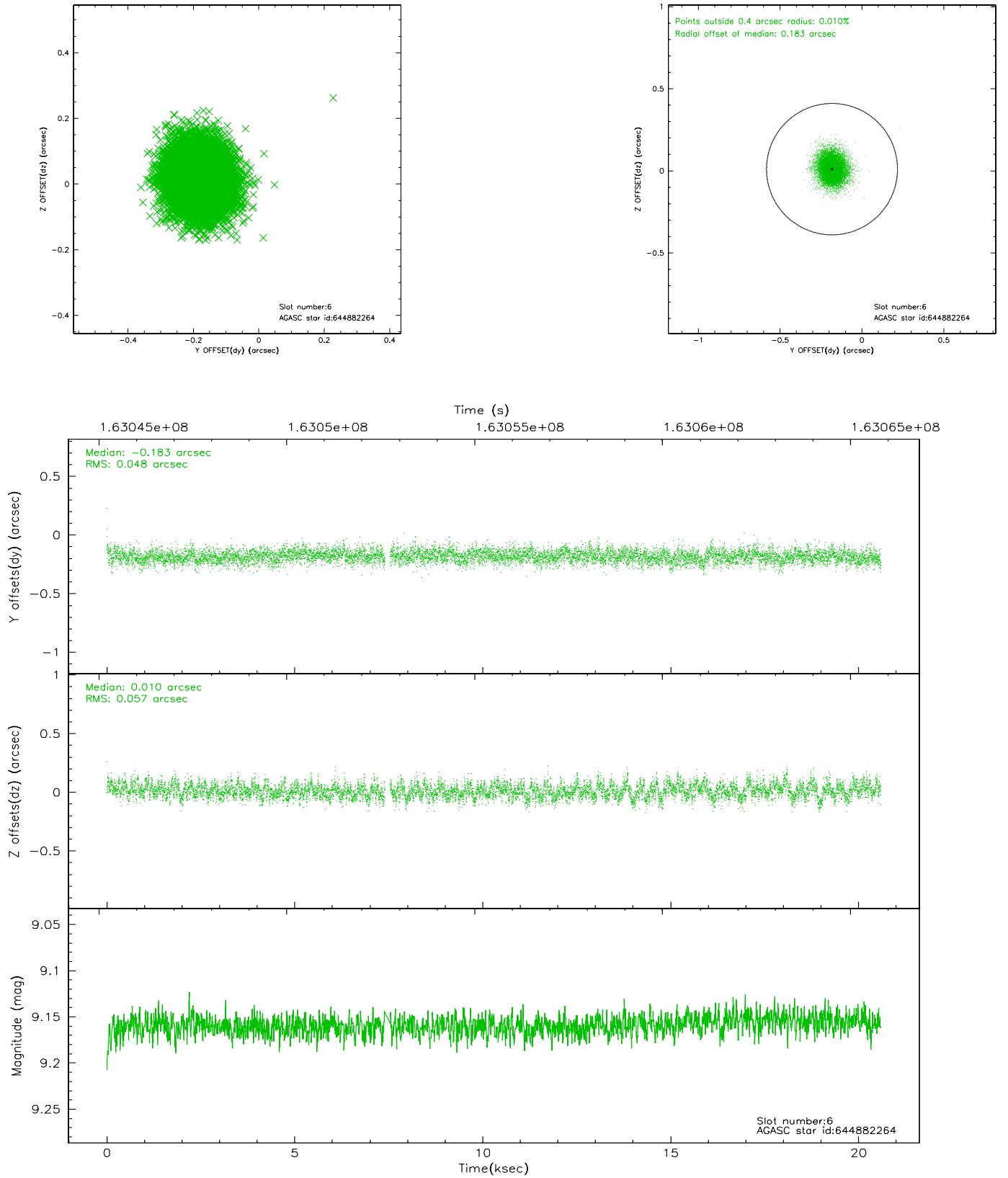
2.4.2 Slot 4



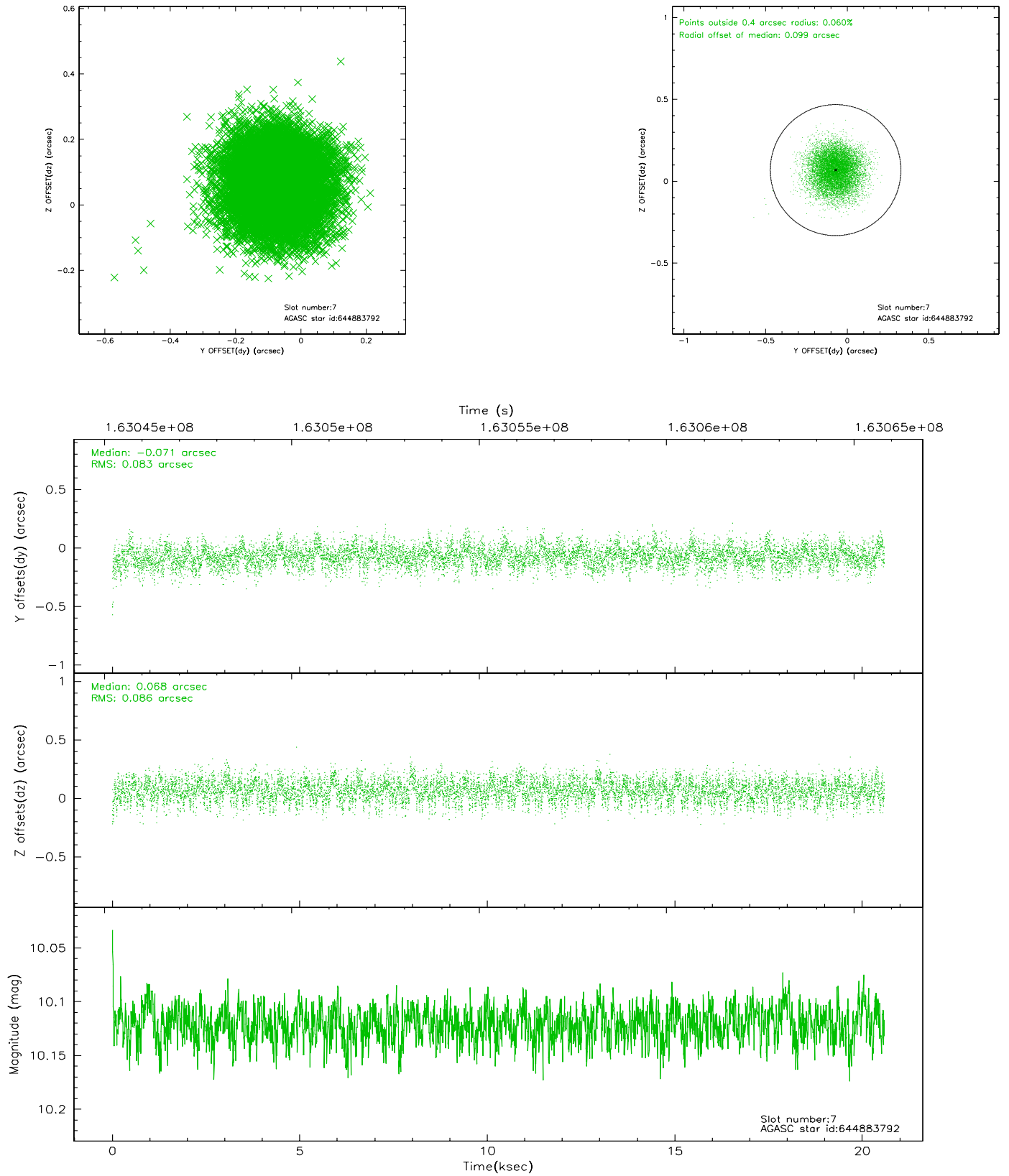
2.4.3 Slot 5



2.4.4 Slot 6

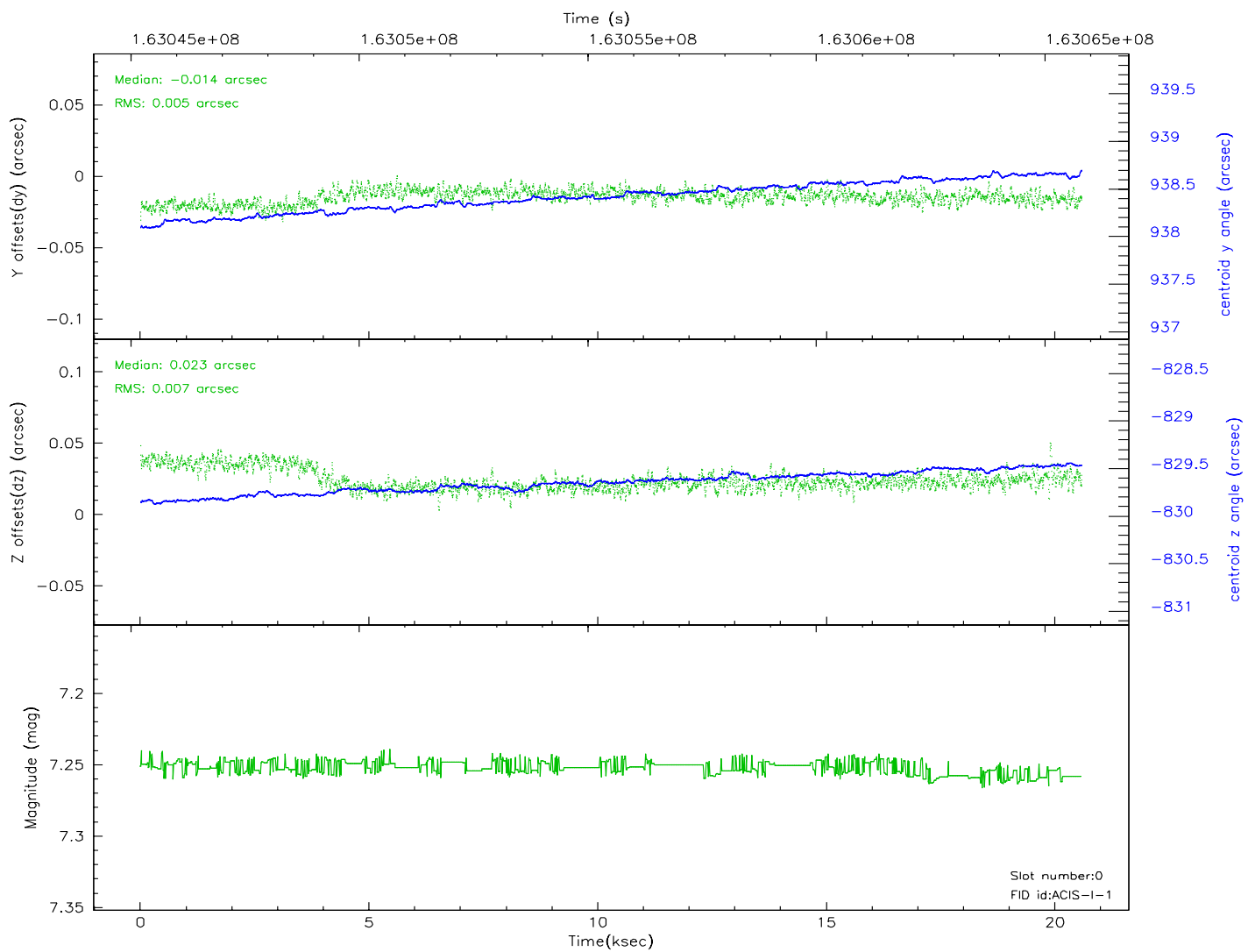
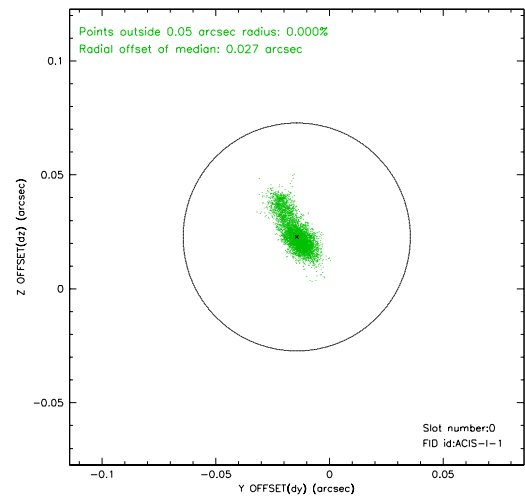
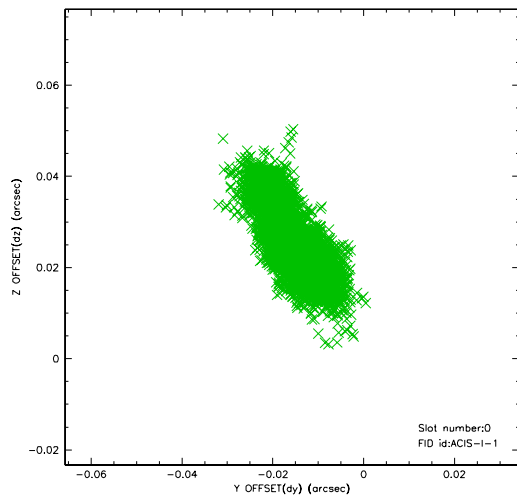


2.4.5 Slot 7

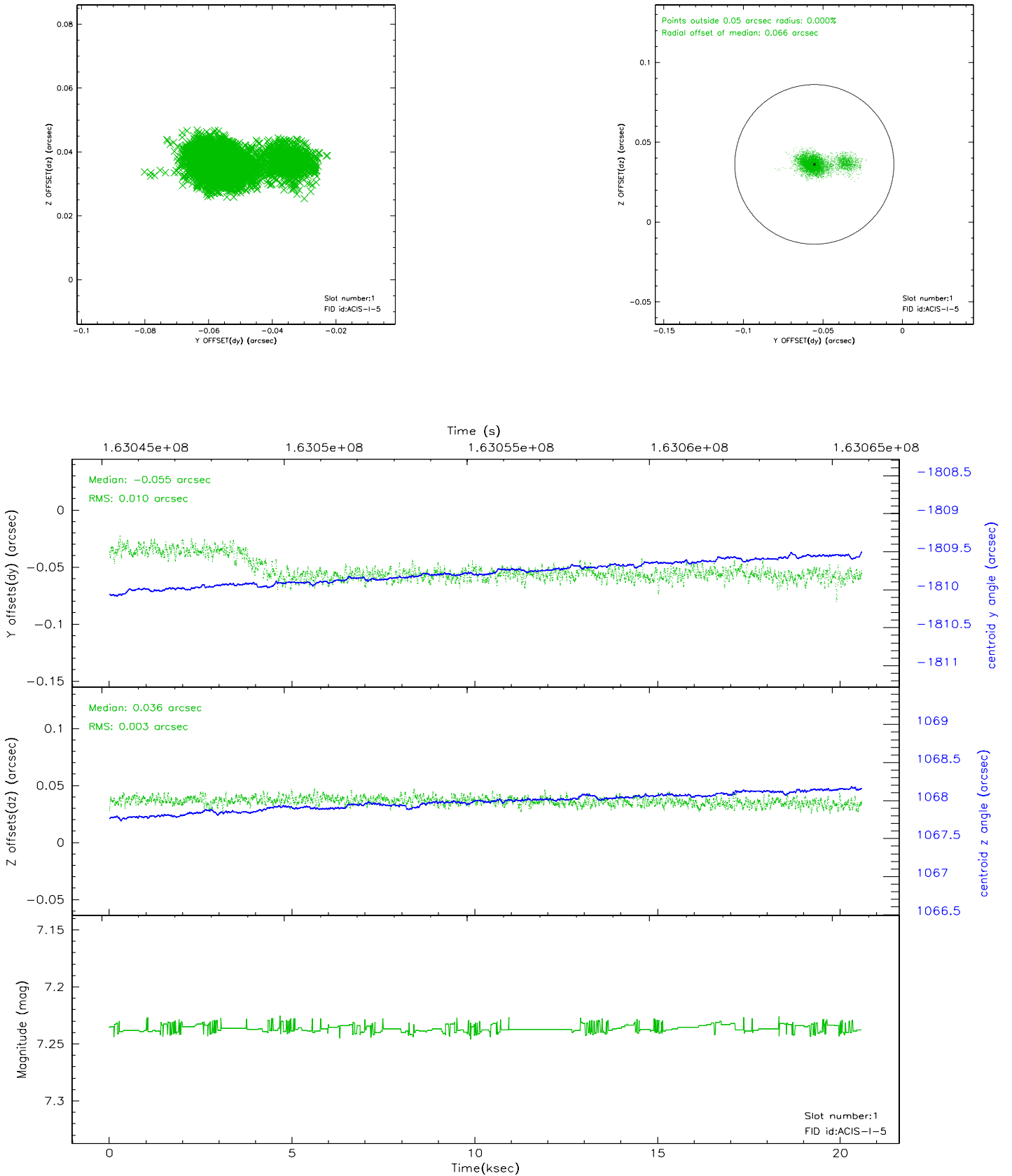


2.5 FID Slots

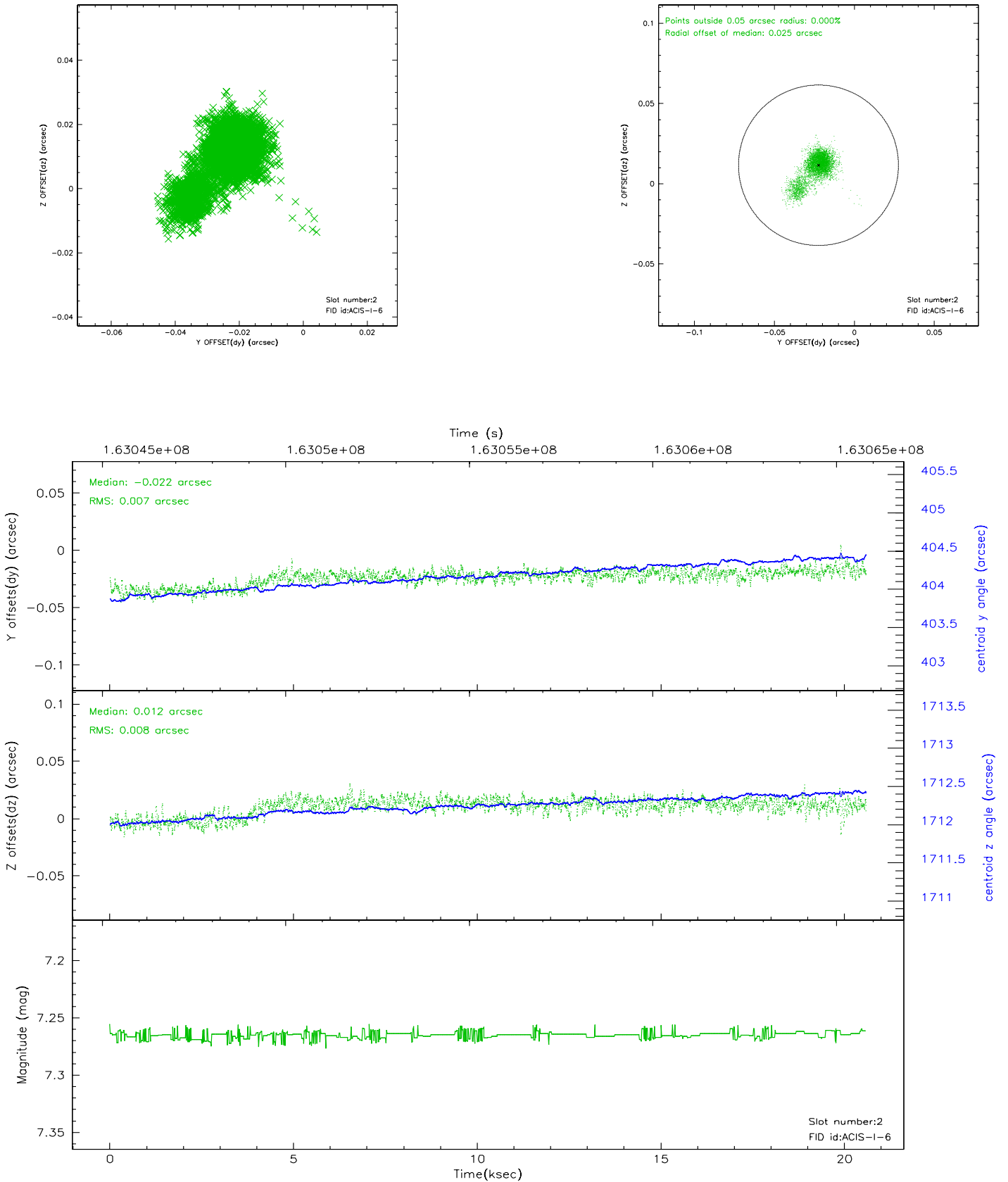
2.5.1 Slot 0



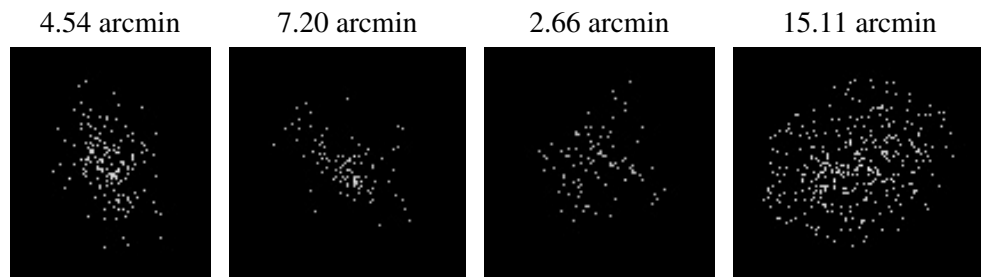
2.5.2 Slot 1



2.5.3 Slot 2



3 Point Sources



A Summary

A.1 Status

V&V Scientist	Beth Sundheim
V&V Date (YYYY-MM-DD)	2006.07.23
V&V Edition	1
V&V Disposition and Status	OK
V&V Charge Time	20.577

A.2 Comments