

V&V Reference Report

L2 ASCDS Version : 8.4.5

Observation 4209 - L2 Version 5
Chandra X-Ray Center

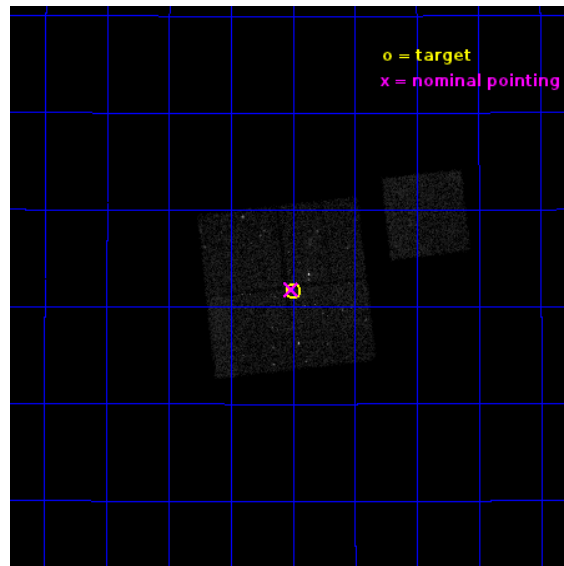
L2 Processing Date : Dec 6 2012

Contents

1	Front	2
2	OBI	3
2.1	OBI	3
2.1.1	Images	3
2.1.2	Bias	3
2.1.3	Parameters	4
2.1.4	Events	4
2.2	Compared Parameters	5
2.3	Aspect	6
2.4	Star Slots	9
2.4.1	Slot 3	9
2.4.2	Slot 4	10
2.4.3	Slot 5	11
2.4.4	Slot 6	12
2.5	FID Slots	13
2.5.1	Slot 0	13
2.5.2	Slot 1	14
2.5.3	Slot 2	15
A	Summary	16
A.1	Status	16
A.2	Comments	16

1 Front

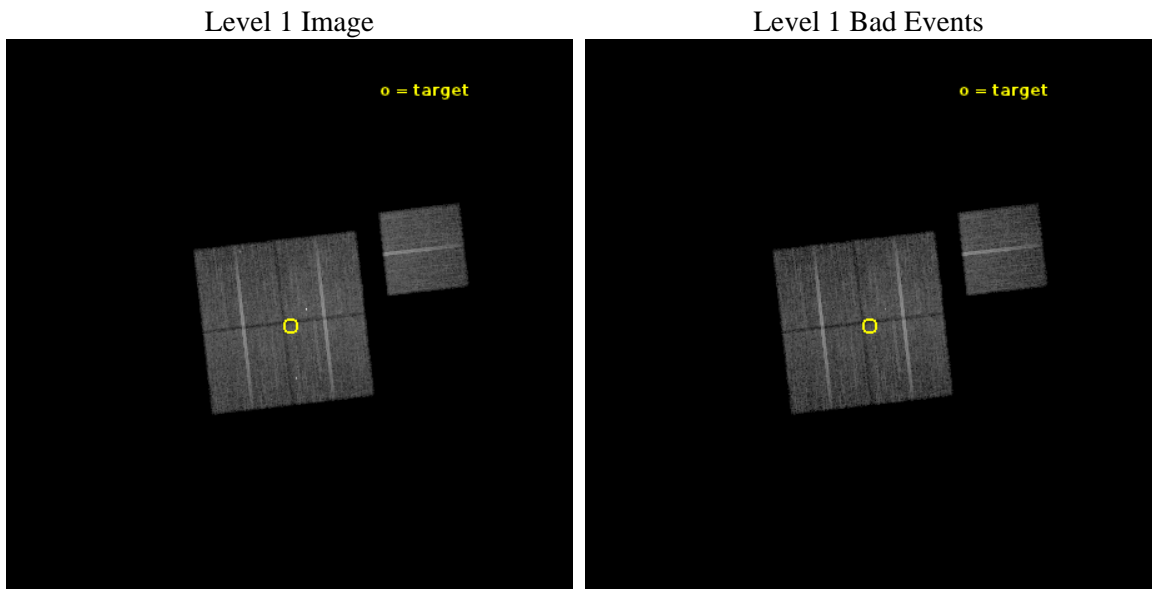
seq_num	800365	Sequence number
obs_id	4209	Observation id
title	CHANDRA OBSERVATIONS OF DLS SHEAR-SELECTED CLUSTERS	Proposal title
observer	Prof. John Hughes	Principal investigator
object	DLS J0916+2931	Source name
dtcycle	0	
cycle	P	events from which exps? Prim/Second/Both
ra_targ	139.0	Observer's specified target RA [deg]
dec_targ	29.526111	Observer's specified target Dec [deg]
ra_nom	139.00262037861	Nominal RA [deg]
dec_nom	29.530103283173	Nominal Dec [deg]
roll_nom	83.481568213358	Nominal Roll [deg]
revision	5	Processing version of data
ontime	19469.832644582	Sum of GTIs [s]
livetime	19215.444947598	Livetime [s]
ontime0	19472.850425154	Sum of GTIs [s]
ontime1	19472.891465157	Sum of GTIs [s]
ontime2	19469.791505009	Sum of GTIs [s]
ontime3	19469.832644582	Sum of GTIs [s]
ontime6	19469.668404907	Sum of GTIs [s]
l2events	46040	Number of level 2 events



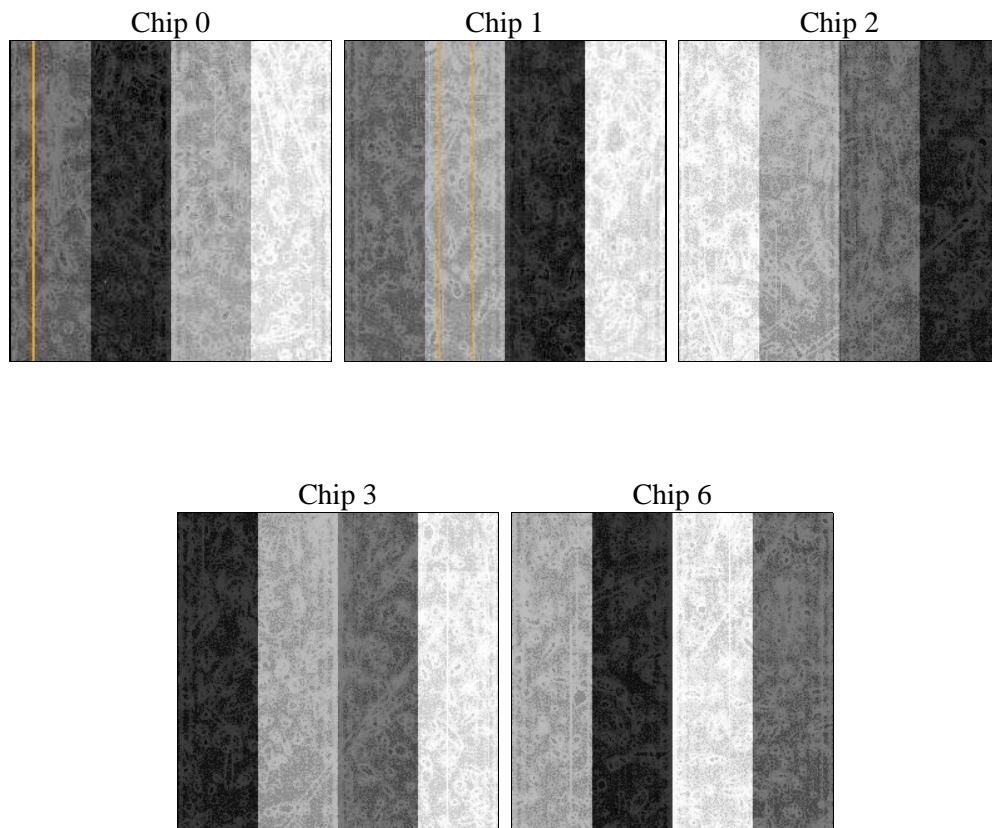
2 OBI

2.1 OBI

2.1.1 Images



2.1.2 Bias



2.1.3 Parameters

obi_num	0	Obi number	sched_exp_time	19353.000000	[s] Scheduled observation exposure time
ascdsver	8.5	Processing system revision	ontime	19469.832644582	Sum of GTIs [s]
caldsver	4.5.4	 	ontime0	19472.850425154	Sum of GTIs [s]
date	2012-12-06T18:11:04	Date and time of file creation	ontime1	19472.891465157	Sum of GTIs [s]
revision	5	Processing version of data	ontime2	19469.791505009	Sum of GTIs [s]
			ontime3	19469.832644582	Sum of GTIs [s]
			ontime6	19469.668404907	Sum of GTIs [s]
			l1events	502642	Number of level 1 events

2.1.4 Events

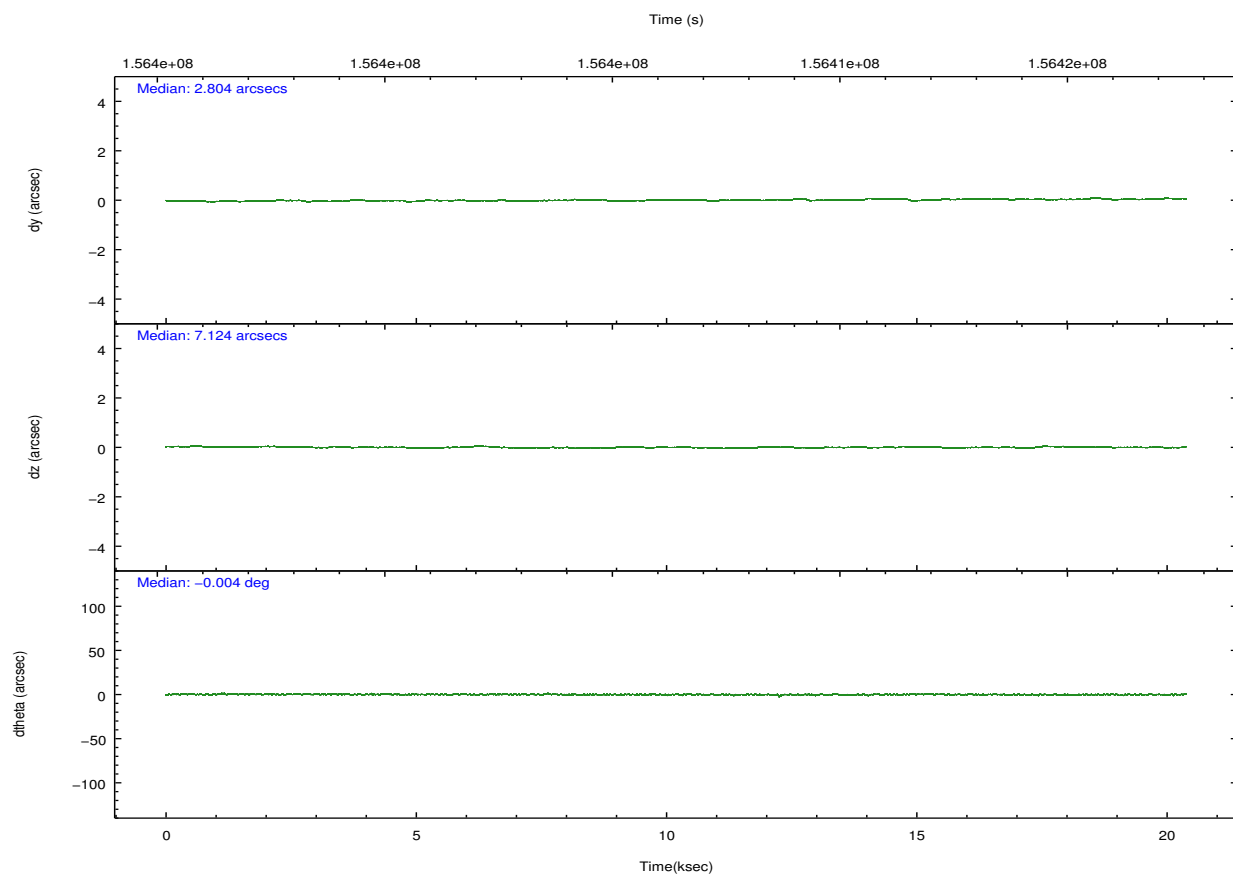
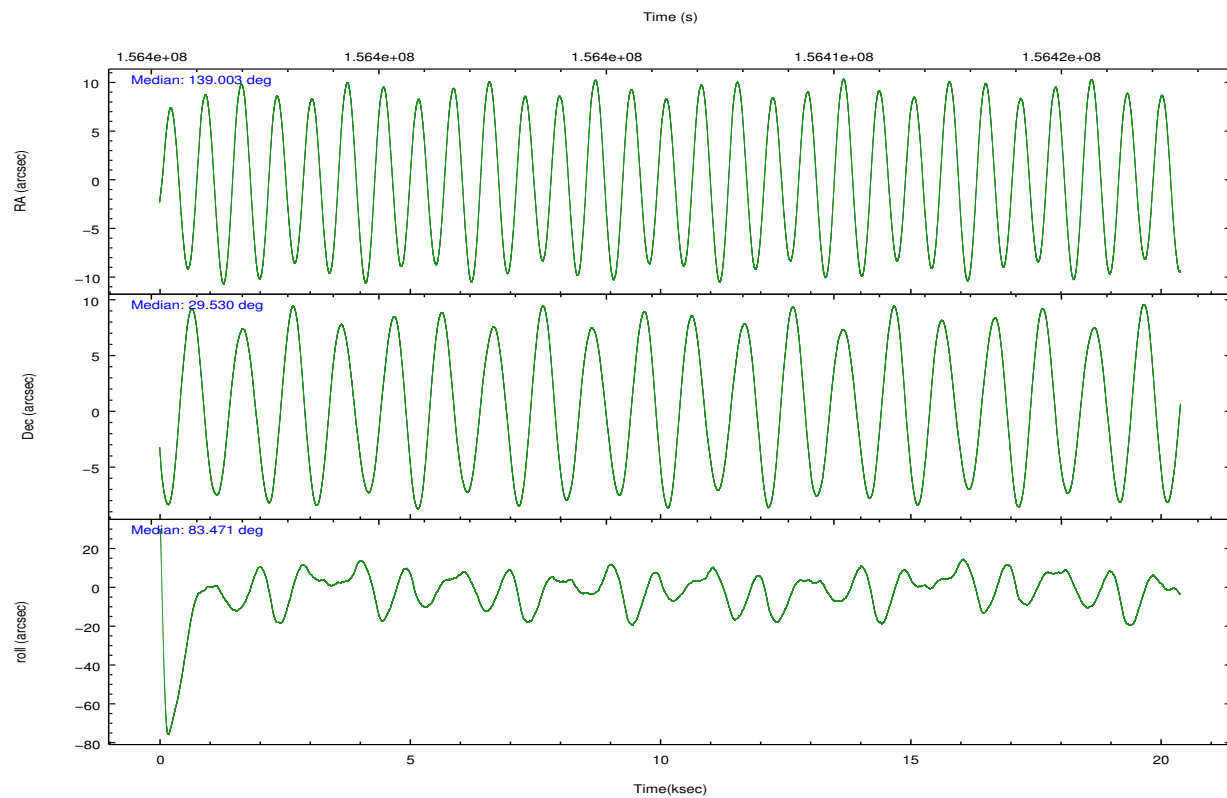
	ccd 0	ccd 1	ccd 2	ccd 3	ccd 6
level 1 events	94908	94445	110919	100713	101657
rejected events	84773	83222	97761	90460	91173
rejected %	89%	88%	88%	89%	89%

	ccd 0	ccd 1	ccd 2	ccd 3	ccd 6
grade 0 events	3557	4110	6194	4053	3780
	3%	4%	5%	4%	3%
grade 1 events	39	46	186	54	44
	0%	0%	0%	0%	0%
grade 2 events	2386	2305	2697	2051	2172
	2%	2%	2%	2%	2%
grade 3 events	1176	1304	1206	1202	1167
	1%	1%	1%	1%	1%
grade 4 events	1125	1218	1220	1090	1162
	1%	1%	1%	1%	1%
grade 5 events	3421	3798	3308	3836	3819
	3%	4%	2%	3%	3%
grade 6 events	1891	2289	1841	1859	2206
	1%	2%	1%	1%	2%
grade 7 events	81313	79375	94267	86568	87307
	85%	84%	84%	85%	85%

2.2 Compared Parameters

Parameter	Planned	Actual	Parameter	Planned	Actual
Instrument	ACIS	ACIS	Obspar format version number	7	7
Detector	ACIS-01236	ACIS-01236	Obspar file type	PREDICTED	ACTUAL
Grating	NONE	NONE	Obspar update status	NONE	UPDATED
Data mode	VFAINT	VFAINT	Number of optional ACIS chips dropped	0	0
Observation mode	POINTING	POINTING	On-chip summing requested	N	N
[deg] Pointing RA	139.015279	139.0026203786142	Subarray requested	NONE	NONE
[deg] Pointing Dec	29.505074	29.53010328317283	Alternating exposures requested	N	N
[deg] Pointing Roll	83.266643	83.48156821335783	[s] Primary exposure time	0.000000	3.1
[mm] SIM focus pos	-0.782348	-0.7809083437167272			
[mm] SIM defocus	0	0.001439871863259334			
[mm] SIM translation stage pos	-233.592463	-233.5874344608287			
[mm] SIM translation stage offset	0	-0.005018542100998502			
[s] Observation start time (MET)	156397242.184000	156395850.54754			
Observation start date	2002-12-16T03:39:38	2002-12-16T03:17:30			
[s] Observation end time (MET)	156416595.184000	156417486.24844			
Observation end date	2002-12-16T09:02:11	2002-12-16T09:18:06			
Read mode	TIMED	TIMED			

2.3 Aspect

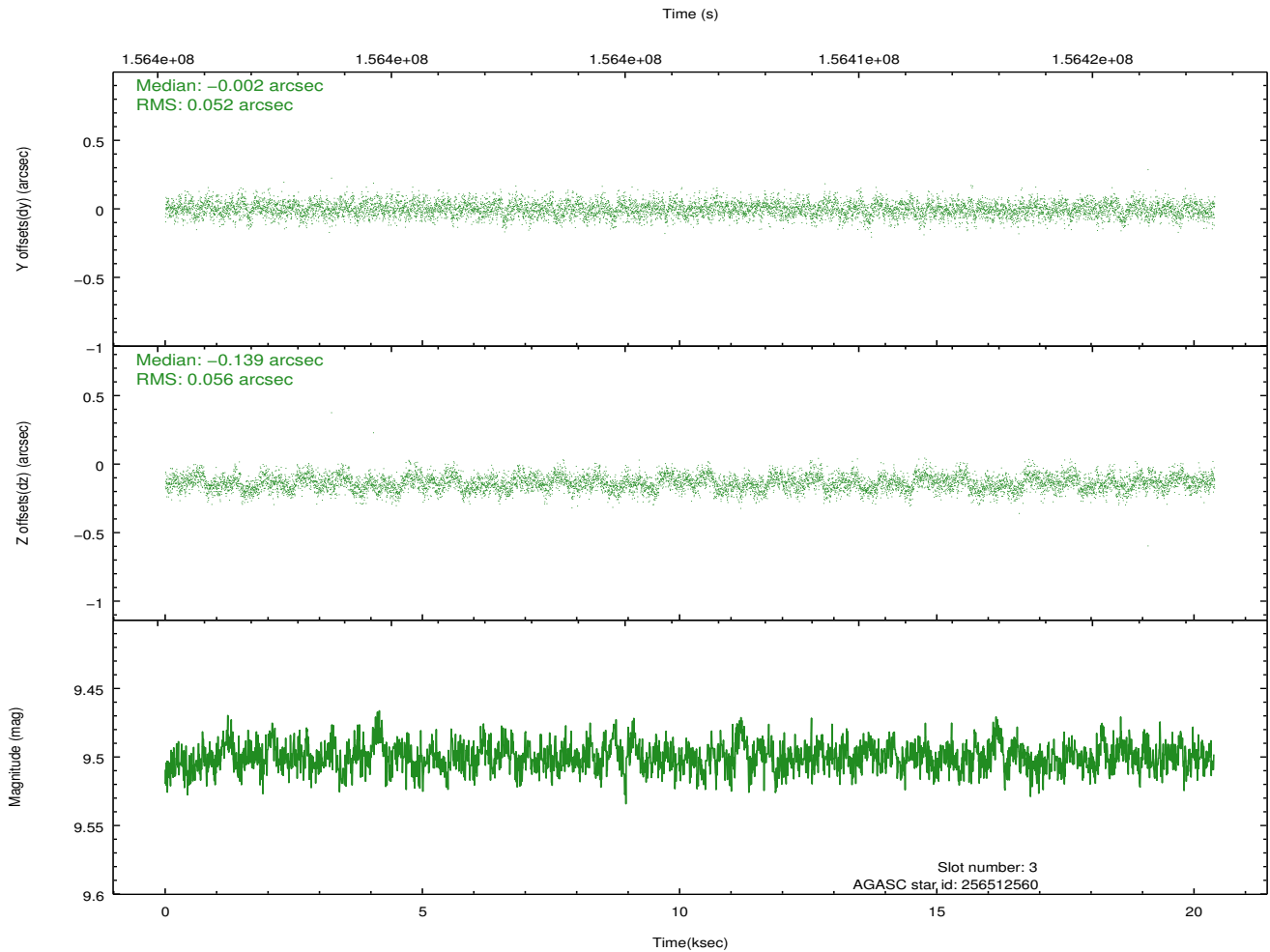
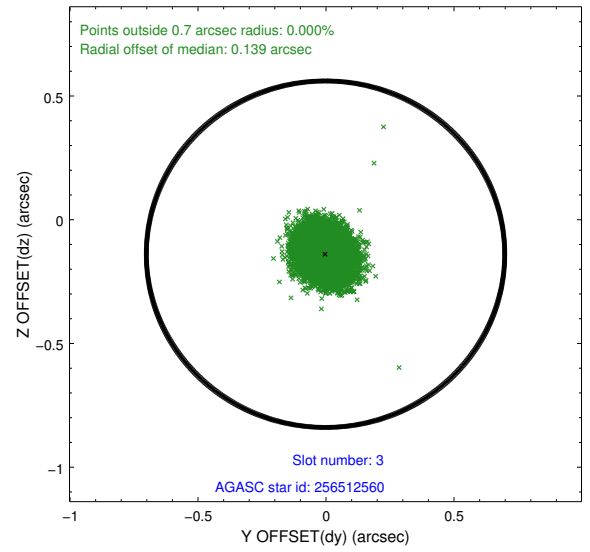
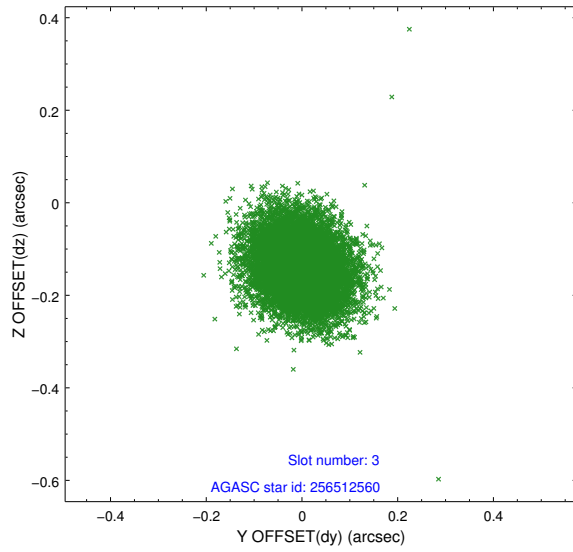


Slot Statistics

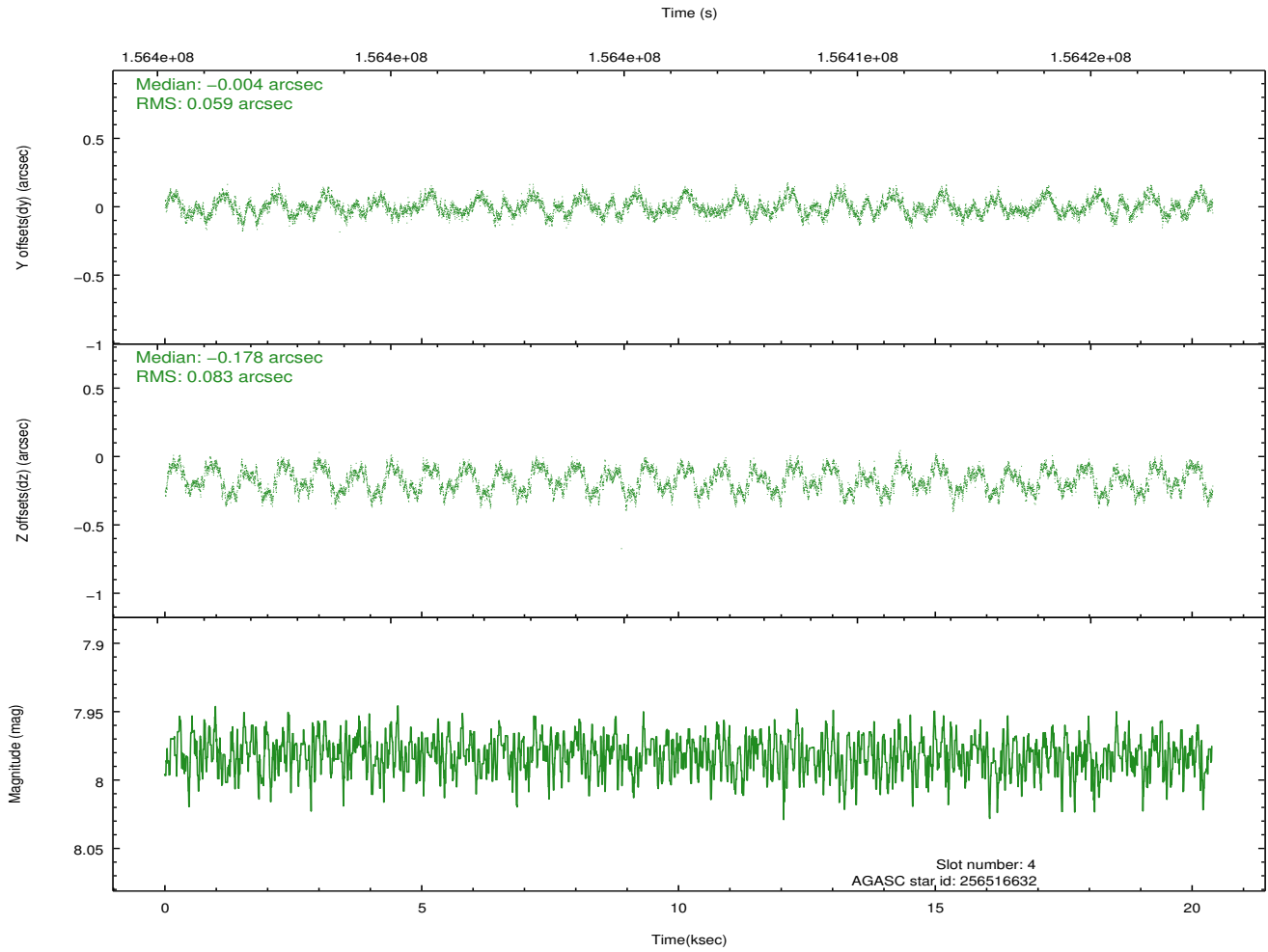
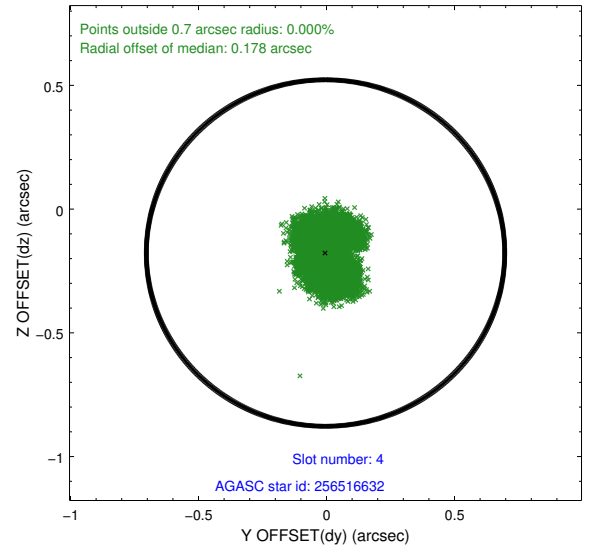
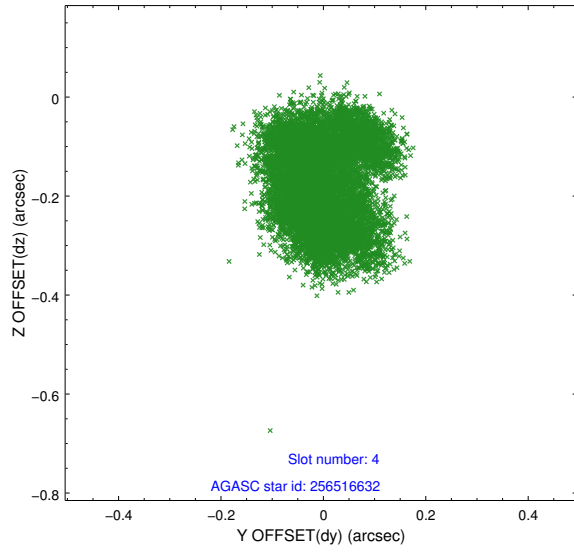
slot	status	id	mag	n_pts	med_dy	med_dz	dr1	dr2	ra	dec	mean_y	mean_z
0	FID	ACIS-I-1	7.25	4975	0.070	-0.060	0.007	0.012	0.000000	0.000000	937.10	-830.54
1	FID	ACIS-I-5	7.24	4974	0.089	0.154	0.006	0.011	0.000000	0.000000	-1810.97	1066.95
2	FID	ACIS-I-6	7.25	4974	-0.250	-0.023	0.008	0.012	0.000000	0.000000	402.02	1711.58
3	GUIDE	256512560	9.50	9939	-0.002	-0.139	0.080	0.131	138.888209	29.792531	981.60	515.76
4	GUIDE	256516632	7.98	9949	-0.004	-0.178	0.113	0.163	138.597890	29.944780	1421.85	1479.18
5	GUIDE	256645808	9.16	9942	0.087	0.141	0.088	0.143	139.646005	29.740726	1079.71	-1857.14
6	GUIDE	256646640	8.19	9948	-0.086	0.176	0.077	0.129	139.706384	29.820517	1387.84	-2009.15
7	OMITTED		0.00	0	0.000	0.000	0.000	0.000	0.000000	0.000000	0.00	0.00

2.4 Star Slots

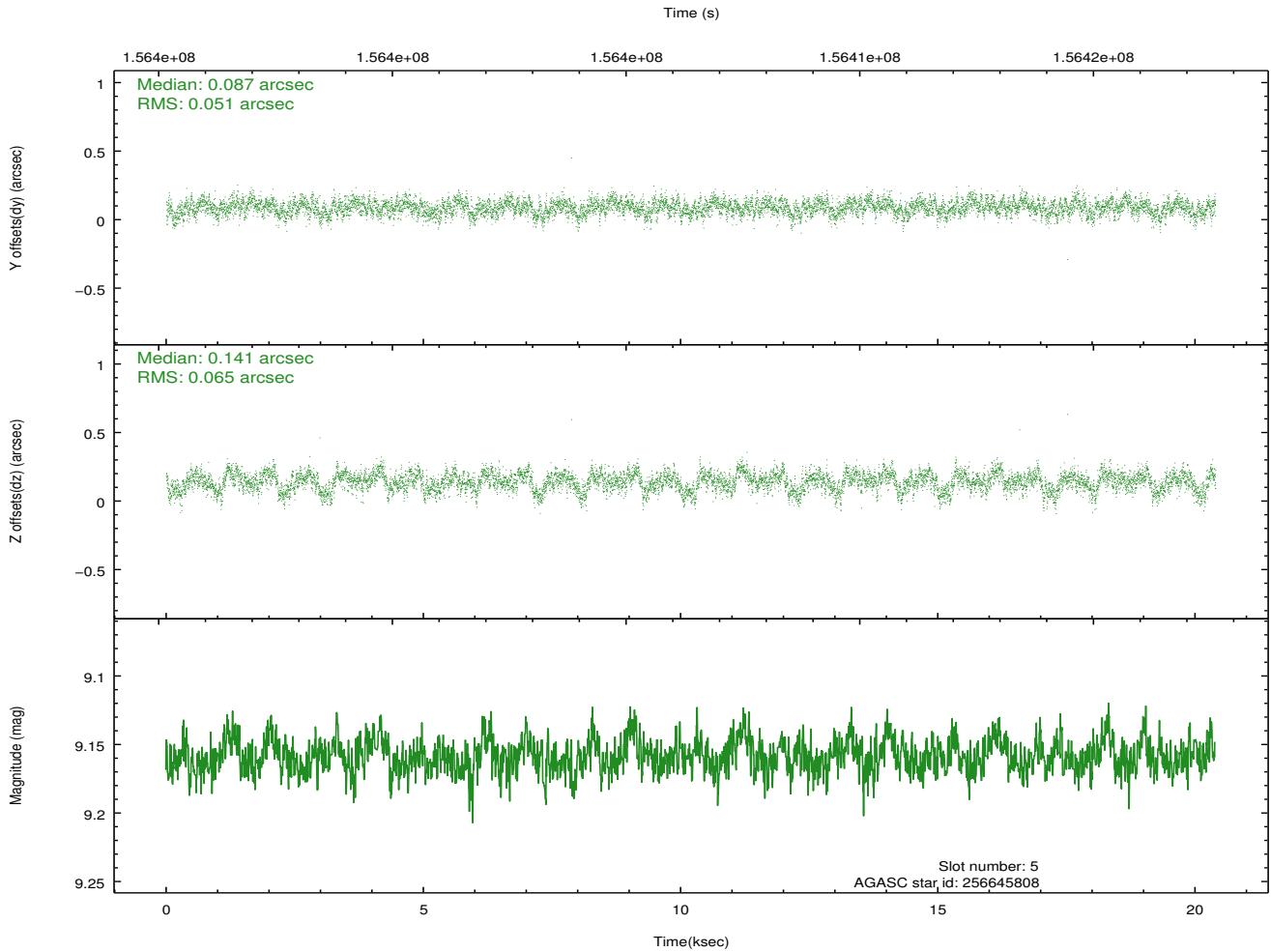
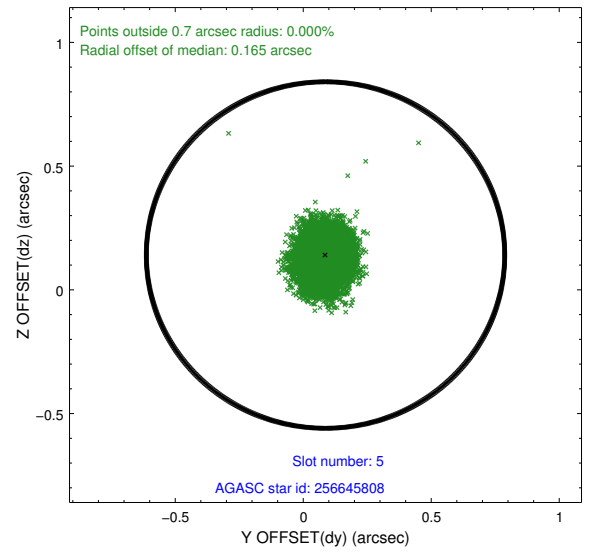
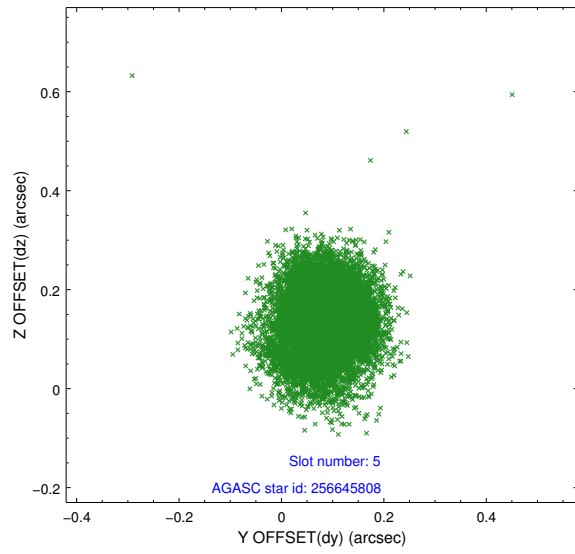
2.4.1 Slot 3



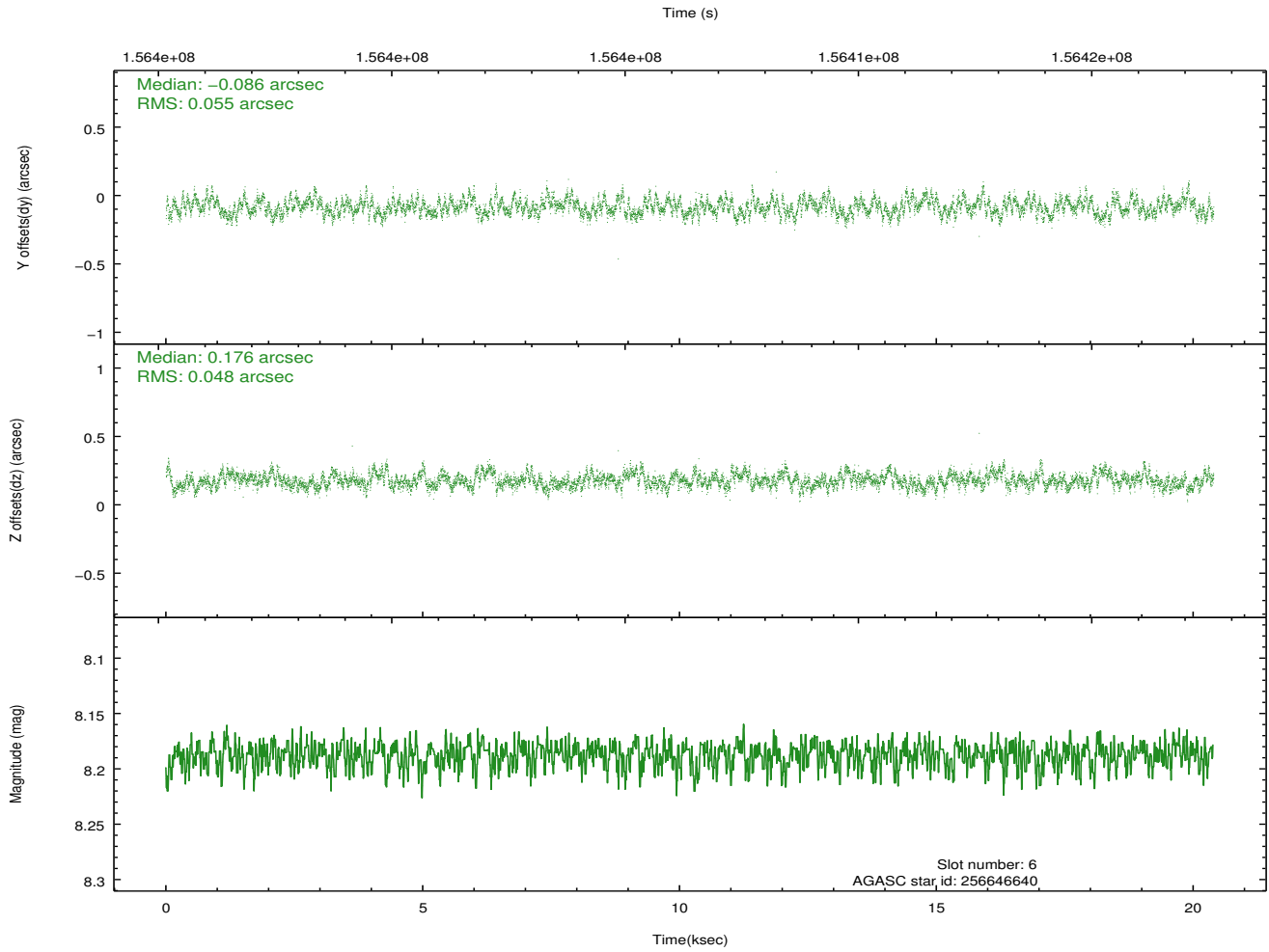
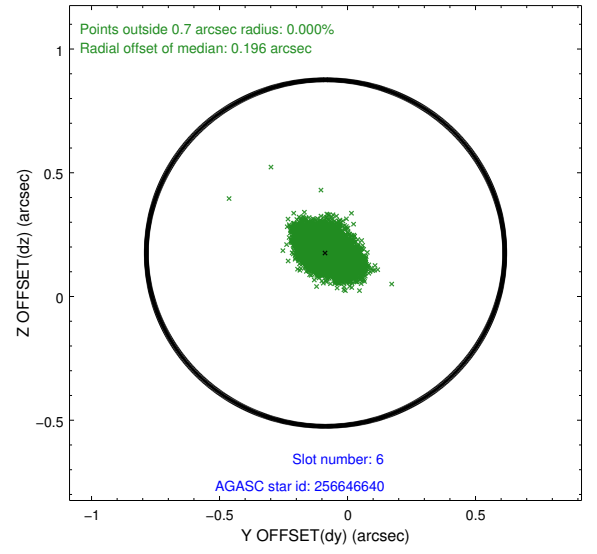
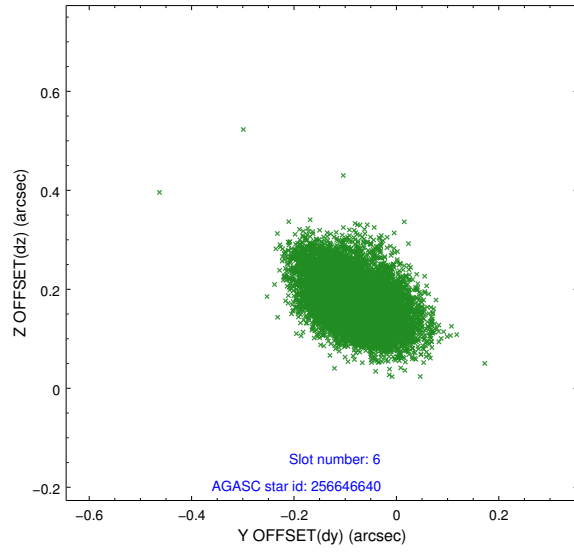
2.4.2 Slot 4



2.4.3 Slot 5

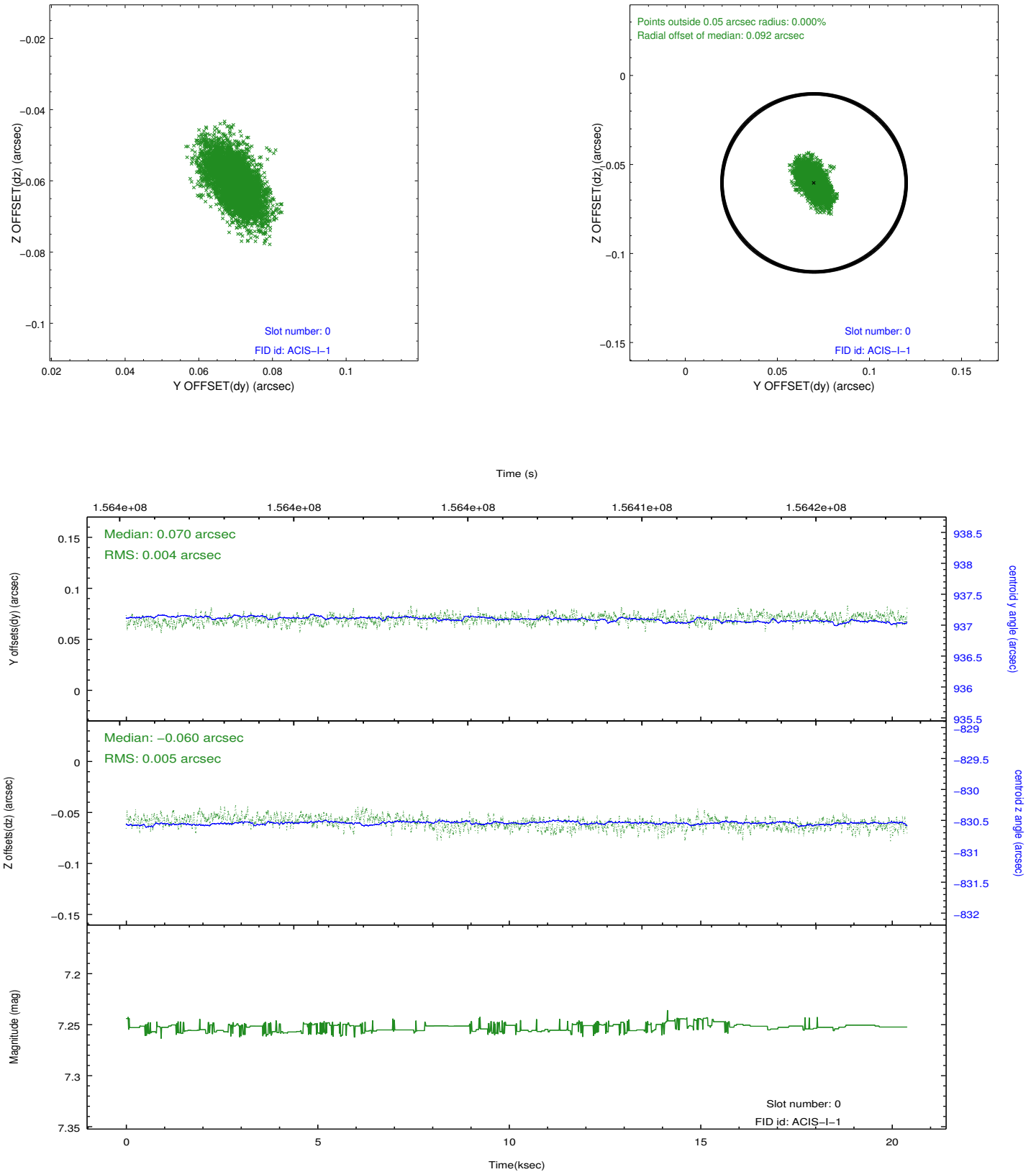


2.4.4 Slot 6

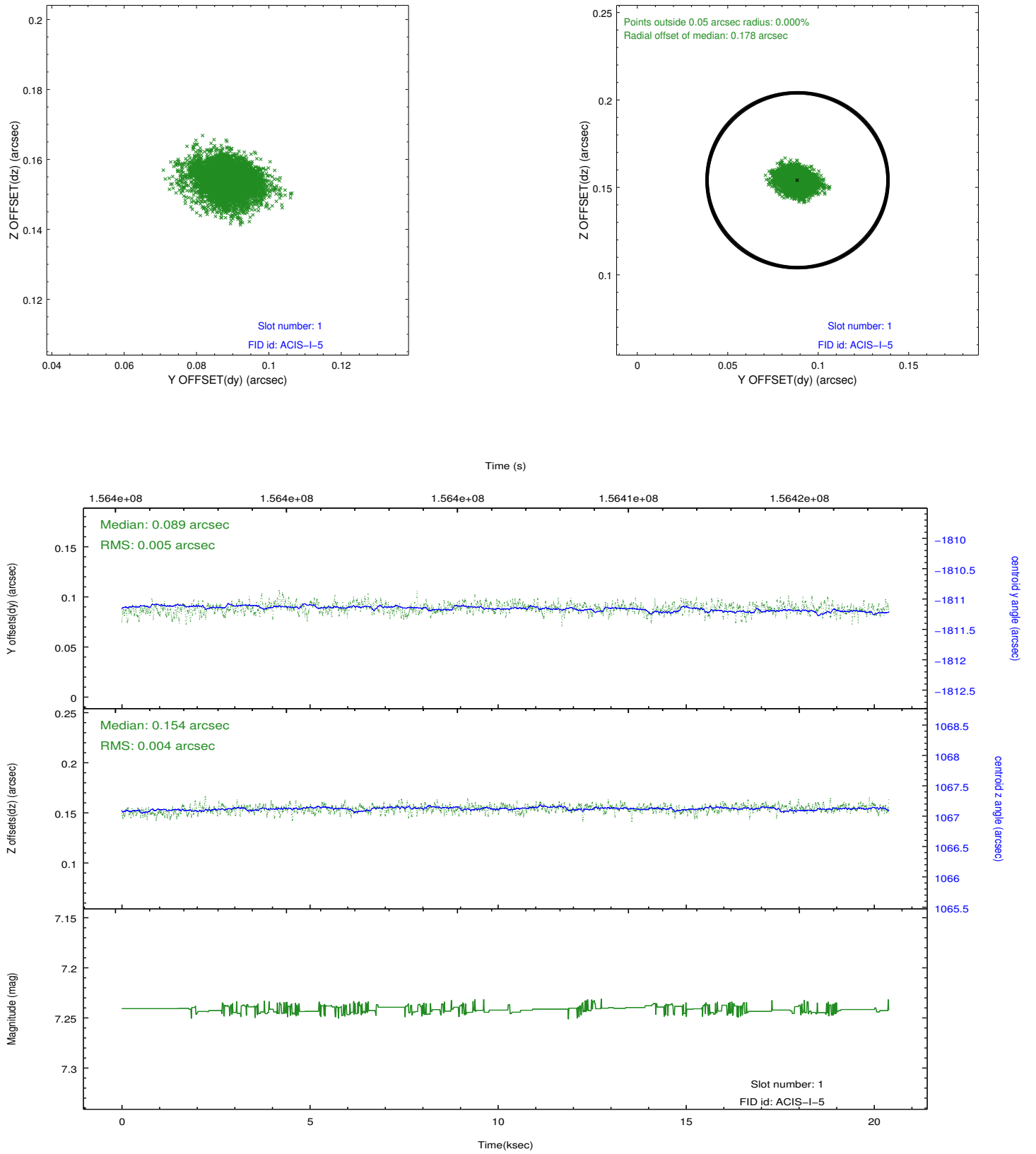


2.5 FID Slots

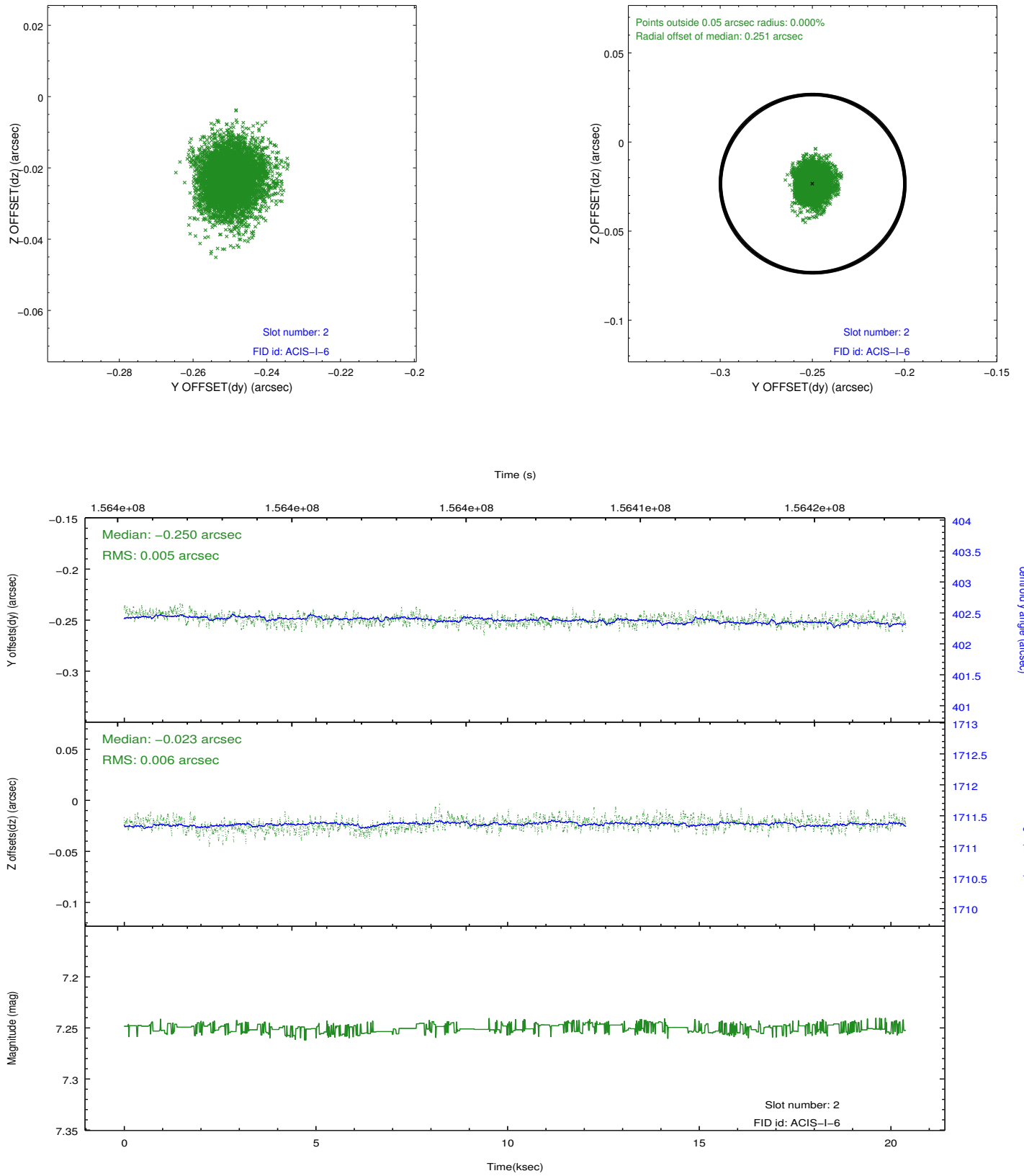
2.5.1 Slot 0



2.5.2 Slot 1



2.5.3 Slot 2



A Summary

A.1 Status

V&V Scientist	Beth Sundheim
V&V Date (YYYY-MM-DD)	2012.12.10
V&V Edition	1
V&V Disposition and Status	OK
V&V Charge Time	19.471

A.2 Comments

The guide star in slot 7 was removed from the aspect solution due to poor data quality. The aspect solution is improved by the removal of this star from the solution.