

V&V Reference Report

L2 ASCDS Version : 7.6.8.1

Observation 4208 - L2 Version 001
Chandra X-Ray Center

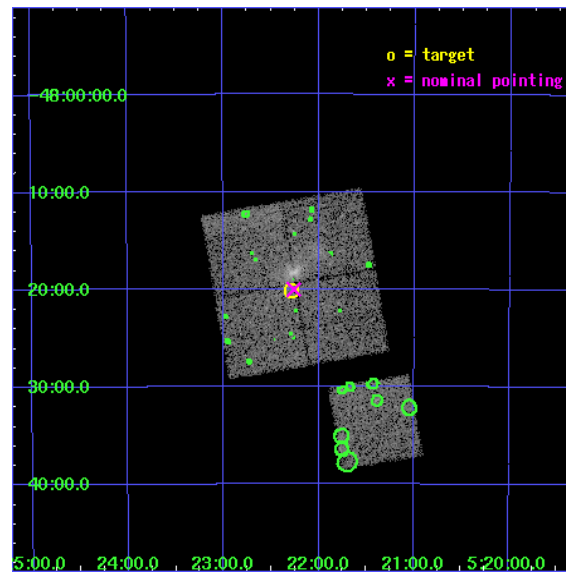
L2 Processing Date : Aug 10 2006

Contents

1	Front	2
2	OBI	3
2.1	OBI	3
2.1.1	Images	3
2.1.2	Bias	3
2.1.3	Parameters	4
2.1.4	Events	4
2.2	Compared Parameters	5
2.3	Aspect	6
2.4	Star Slots	9
2.4.1	Slot 3	9
2.4.2	Slot 4	10
2.4.3	Slot 5	11
2.4.4	Slot 6	12
2.4.5	Slot 7	13
2.5	FID Slots	14
2.5.1	Slot 0	14
2.5.2	Slot 1	15
2.5.3	Slot 2	16
3	Point Sources	17
A	Summary	18
A.1	Status	18
A.2	Comments	18

1 Front

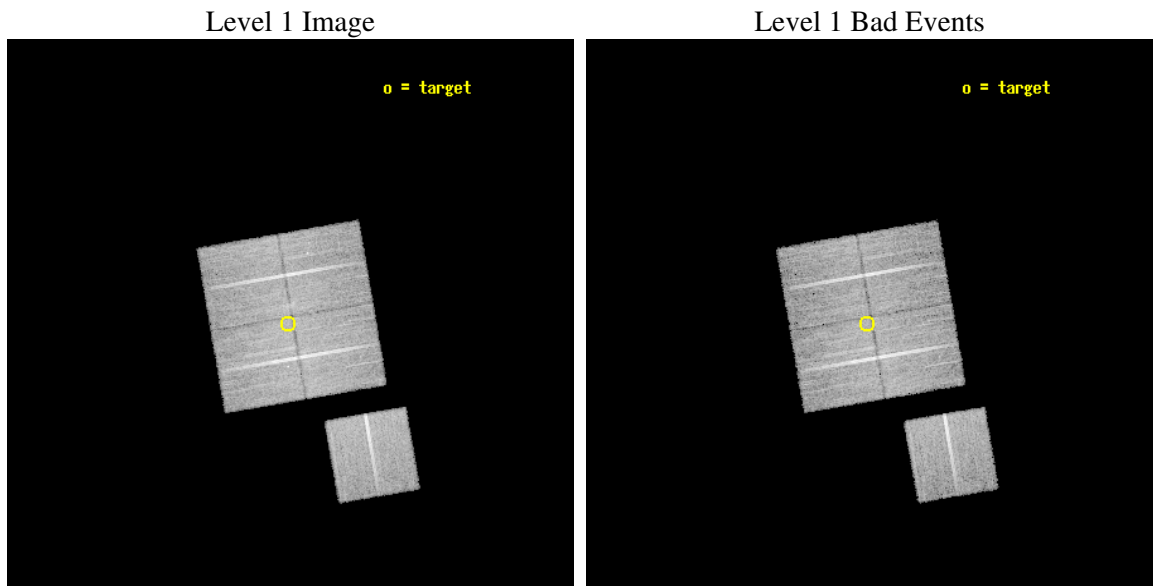
seq_num	800364
obs_id	4208
title	CHANDRA OBSERVATIONS OF DLS SHEAR-SELECTED CLUSTERS
observer	Prof. John Hughes
object	DLS J0522-4820
dtcycle	0
cycle	P
ra_targ	80.570833
dec_targ	-48.336111
ra_nom	80.564995781526
dec_nom	-48.333608561731
roll_nom	170.20431119311
revision	2
ontime	20106.59996134
livetime	19843.892430582
ontime0	20106.59996134
ontime1	20106.59996134
ontime2	20106.59996134
ontime3	20106.59996134
ontime6	20100.318030894
l2events	47853



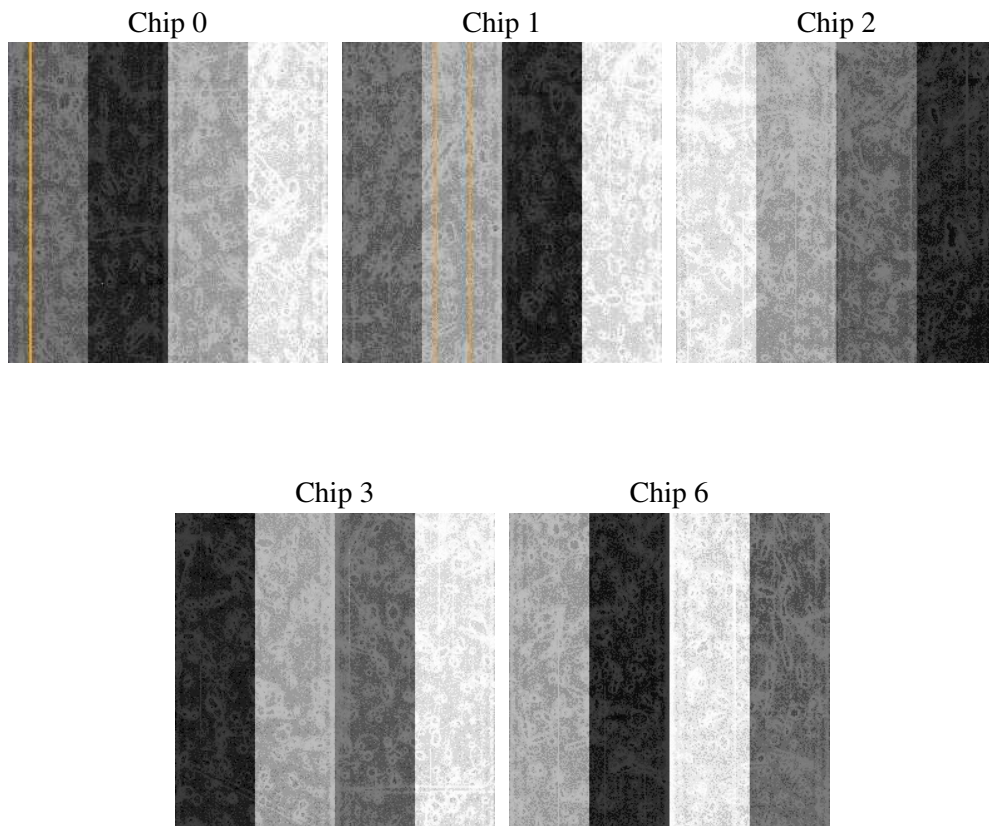
2 OBI

2.1 OBI

2.1.1 Images



2.1.2 Bias



2.1.3 Parameters

obi_num	1
ascdsver	7.6.8.1
caldbver	3.2.2
date	2006-08-10T04:41:24
revision	2

sched_exp_time	19968.349000
ontime	20787.161824137
ontime0	20784.020843893
ontime1	20787.161824137
ontime2	20787.161824137
ontime3	20787.161824137
ontime6	20780.87989369
llevents	499919

2.1.4 Events

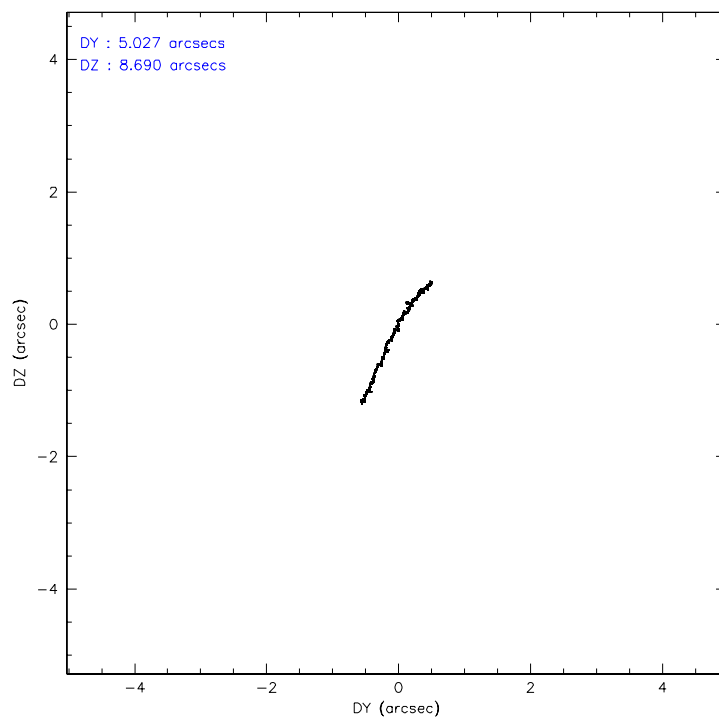
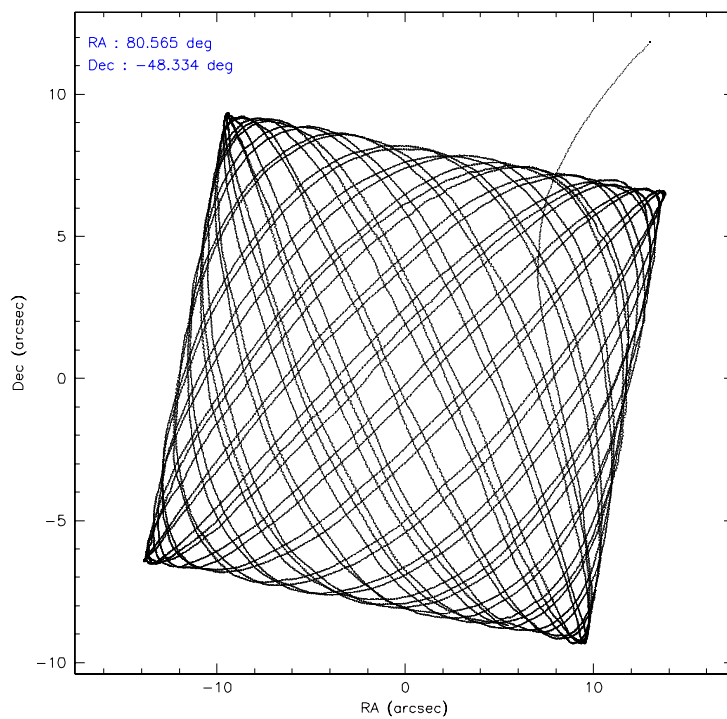
	ccd 0	ccd 1	ccd 2	ccd 3	ccd 6
level 1 events	94506	95658	105604	103614	100537
rejected events	82256	82888	95385	93105	89754
rejected %	87%	86%	90%	89%	89%

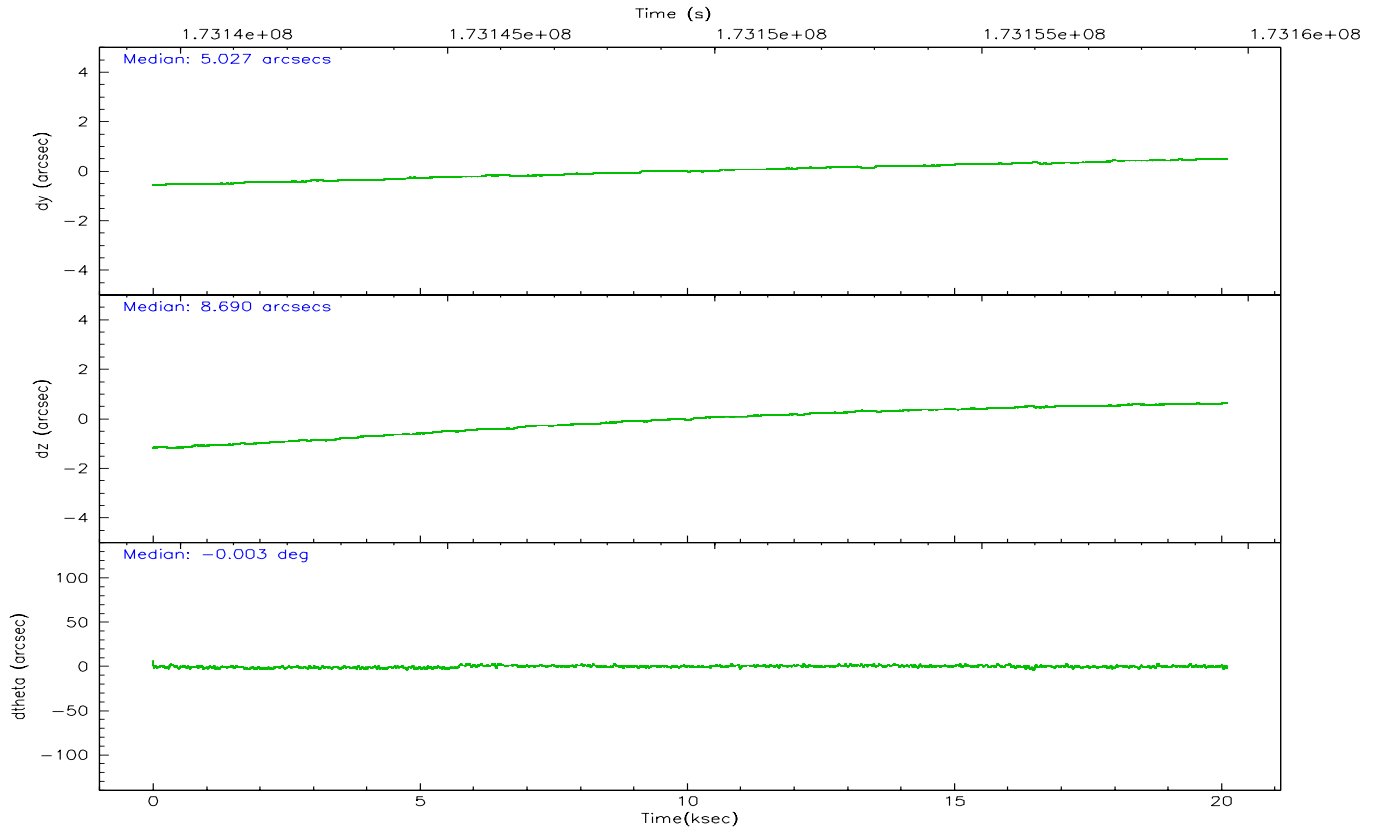
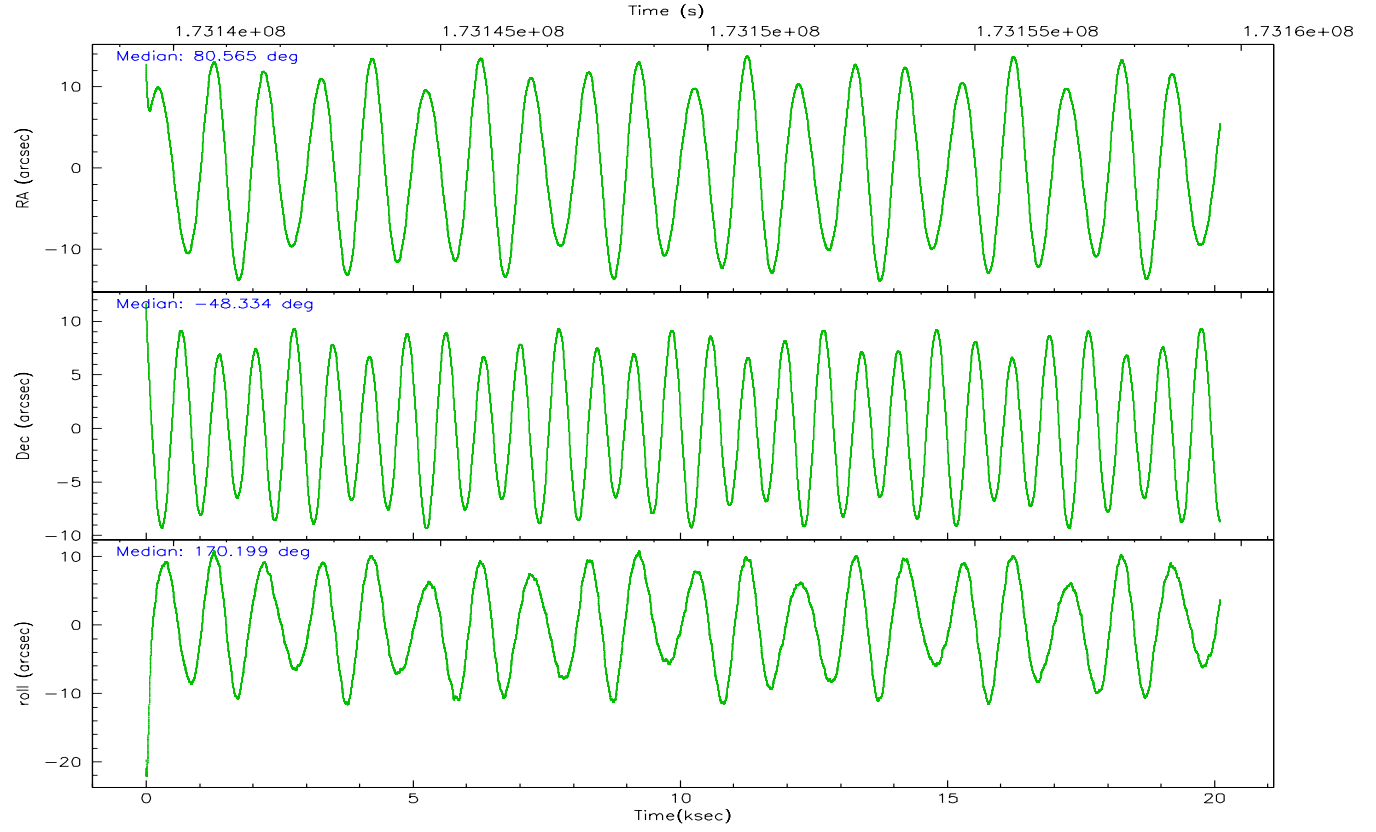
	ccd 0	ccd 1	ccd 2	ccd 3	ccd 6
grade 0 events	5544	5557	4122	4486	4222
	5%	5%	3%	4%	4%
grade 1 events	49	48	42	66	47
	0%	0%	0%	0%	0%
grade 2 events	2566	2575	2290	2131	2272
	2%	2%	2%	2%	2%
grade 3 events	1270	1428	1157	1096	1223
	1%	1%	1%	1%	1%
grade 4 events	1181	1322	1170	1180	1205
	1%	1%	1%	1%	1%
grade 5 events	3622	3788	3326	3924	3912
	3%	3%	3%	3%	3%
grade 6 events	2041	2274	1823	1907	2206
	2%	2%	1%	1%	2%
grade 7 events	78233	78666	91674	88824	85450
	82%	82%	86%	85%	84%

2.2 Compared Parameters

Parameter	Planned	Actual	Parameter	Planned	Actual
Instrument	ACIS	ACIS	Obspar format version number	6	6
Detector	ACIS-01236	ACIS-01236	Obspar file type	PREDICTED	ACTUAL
Grating	NONE	NONE	Obspar update status	NONE	UPDATED
Data mode	VFAINT	VFAINT	On-chip summing requested	N	N
Observation mode	POINTING	POINTING	Subarray requested	NONE	NONE
Pointing RA	80.603561	80.56499578152638	Alternating exposures requested	N	N
Pointing Dec	-48.324040	-48.33360856173098	Primary exposure time	0.000000	3.1
Pointing Roll	170.024445	170.2043111931076			
SIM focus pos (mm)	-0.782348	-0.7809083437167272			
SIM defocus (mm)	0	0.001439871863259334			
SIM translation stage pos (mm)	-233.592463	-233.5874344608287			
SIM translation stage offset (mm)	0	-0.005018542100998502			
Observation start time	173139628.184000	173138321.69054			
Observation start date	2003-06-27T22:19:24	2003-06-27T21:58:41			
Observation end time	173159596.184000	173159910.75396			
Observation end date	2003-06-28T03:52:12	2003-06-28T03:58:30			
Read mode	TIMED	TIMED			

2.3 Aspect



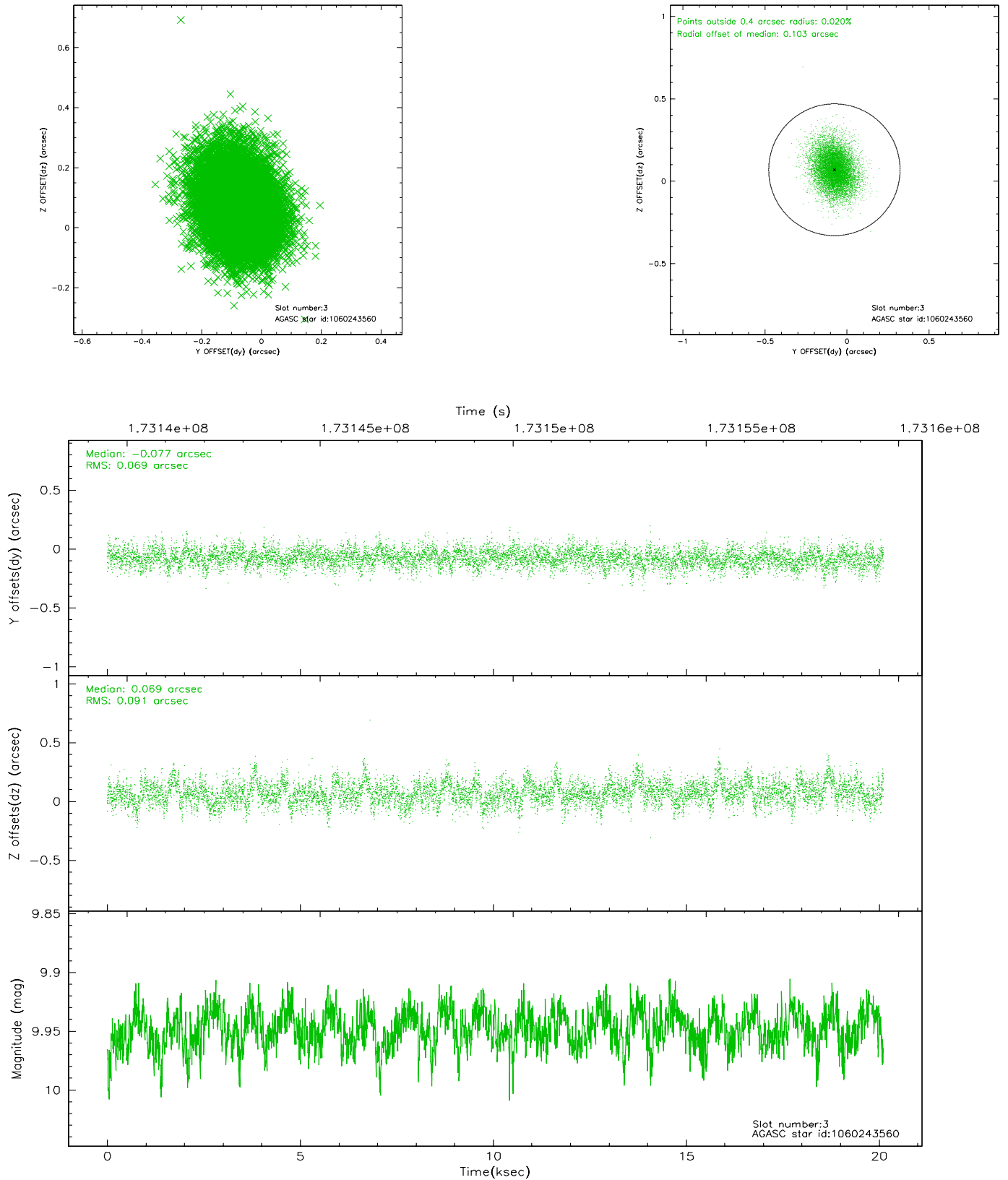


Slot Statistics

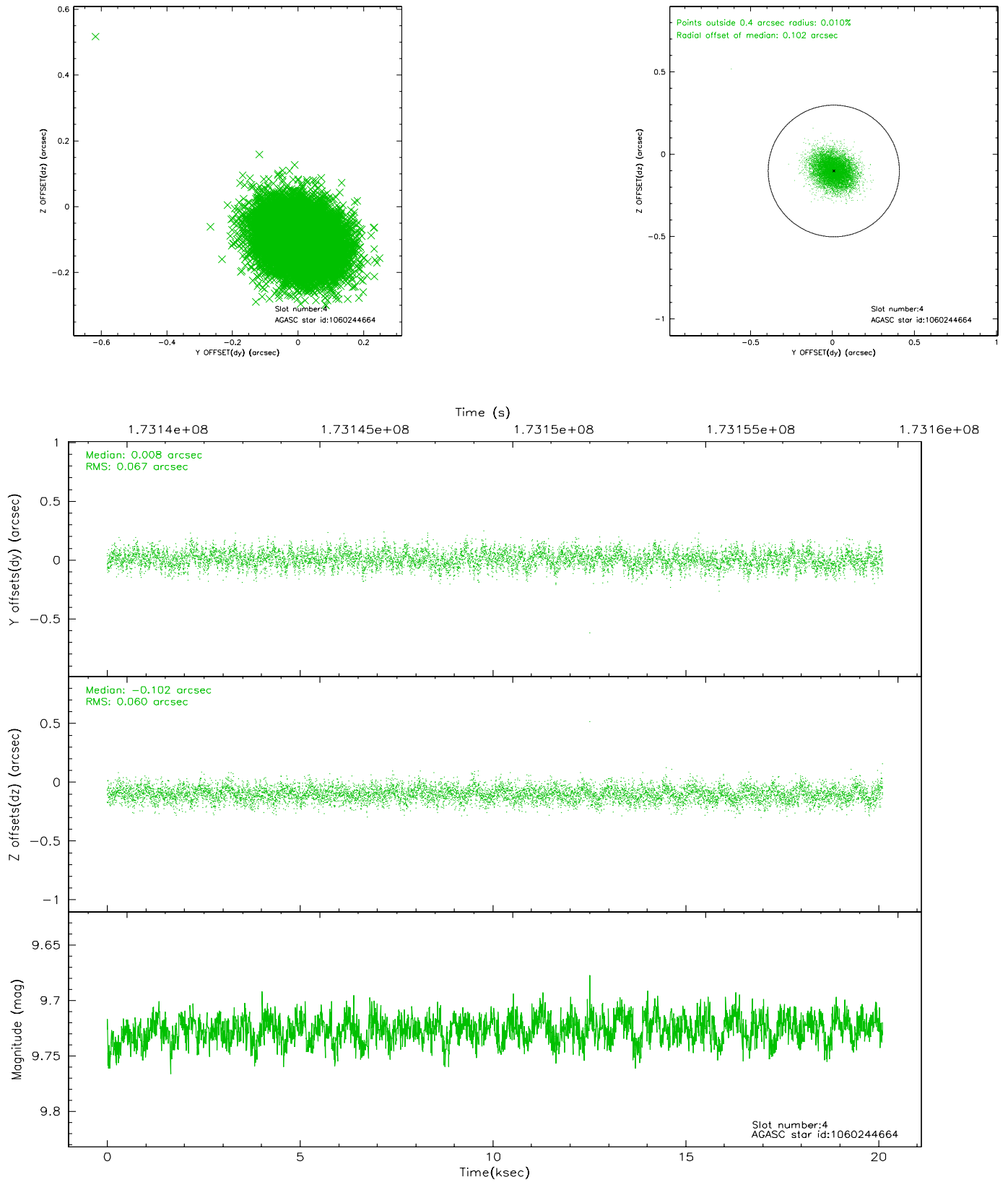
slot	status	id	mag	n_pts	med_dy	med_dz	dr1	dr2	ra	dec	mean_y	mean_z
0	FID	ACIS-I-1	7.24	4905	-0.043	0.080	0.026	0.064	0.000000	0.000000	934.69	-831.93
1	FID	ACIS-I-2	7.14	4905	-0.096	-0.044	0.024	0.035	0.000000	0.000000	-759.34	-838.60
2	FID	ACIS-I-4	7.18	4905	0.038	0.037	0.040	0.055	0.000000	0.000000	2154.55	1067.76
3	GUIDE	1060243560	9.95	9806	-0.077	0.069	0.120	0.202	80.304631	-47.755333	1067.32	-1889.21
4	GUIDE	1060244664	9.73	9801	0.008	-0.102	0.096	0.154	80.384345	-48.536048	382.54	842.99
5	GUIDE	1060247176	9.65	9800	-0.002	0.144	0.104	0.170	80.874820	-48.218455	-574.92	-485.41
6	GUIDE	1060247920	9.66	9811	0.048	-0.052	0.109	0.182	81.470195	-48.655540	-2238.42	829.84
7	GUIDE	1060245832	9.60	9803	0.022	-0.064	0.092	0.148	81.474615	-48.640010	-2239.92	773.09

2.4 Star Slots

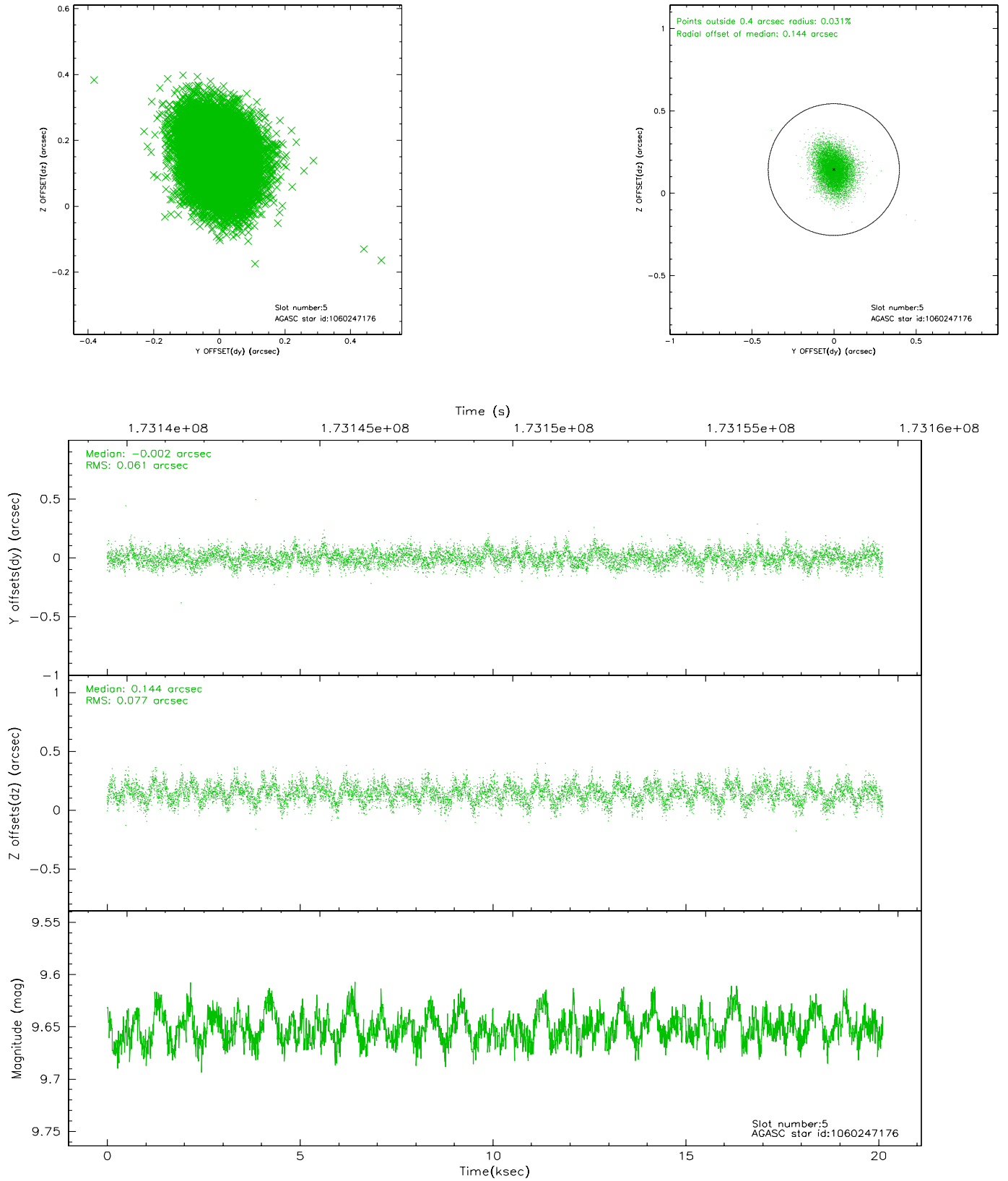
2.4.1 Slot 3



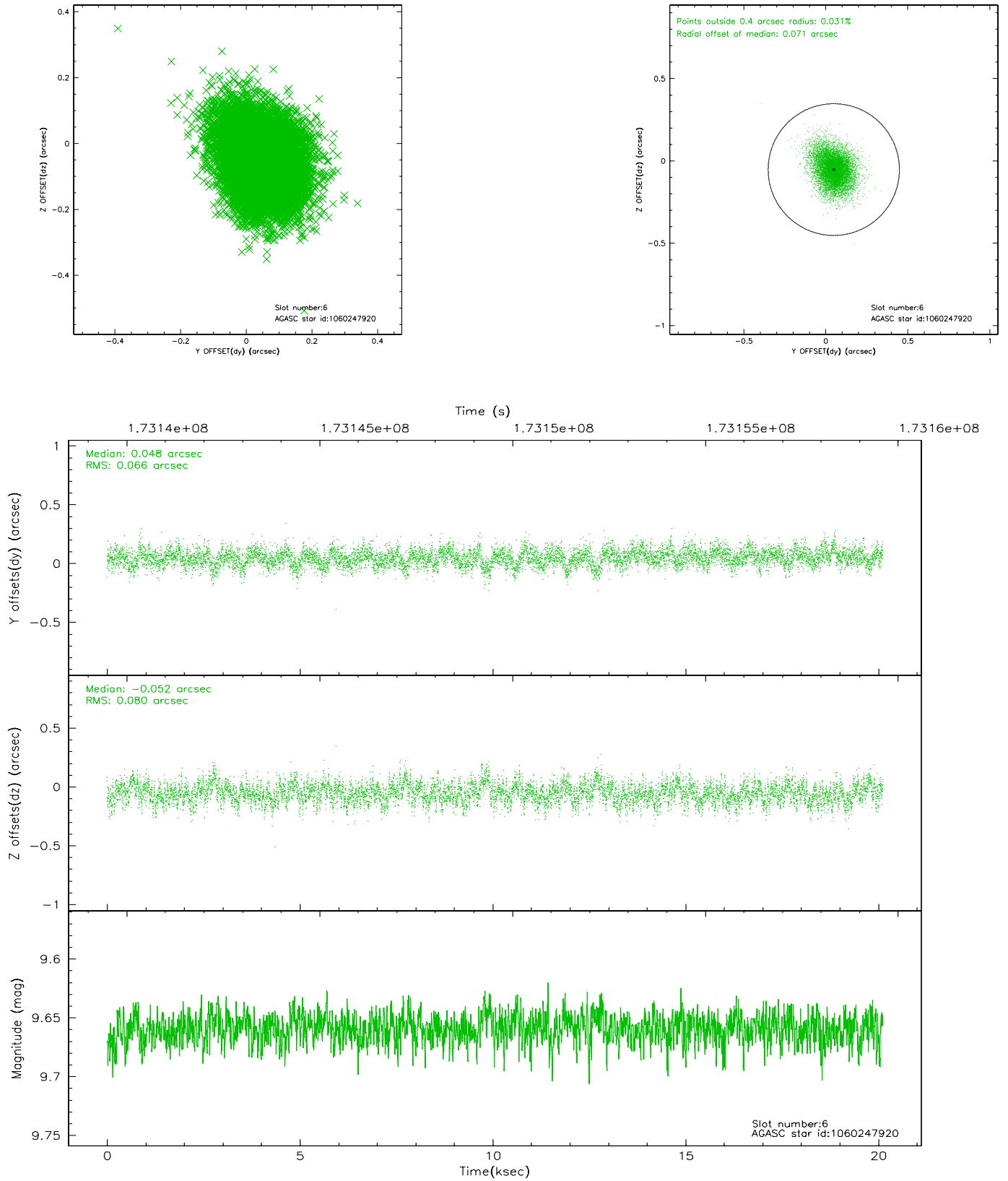
2.4.2 Slot 4



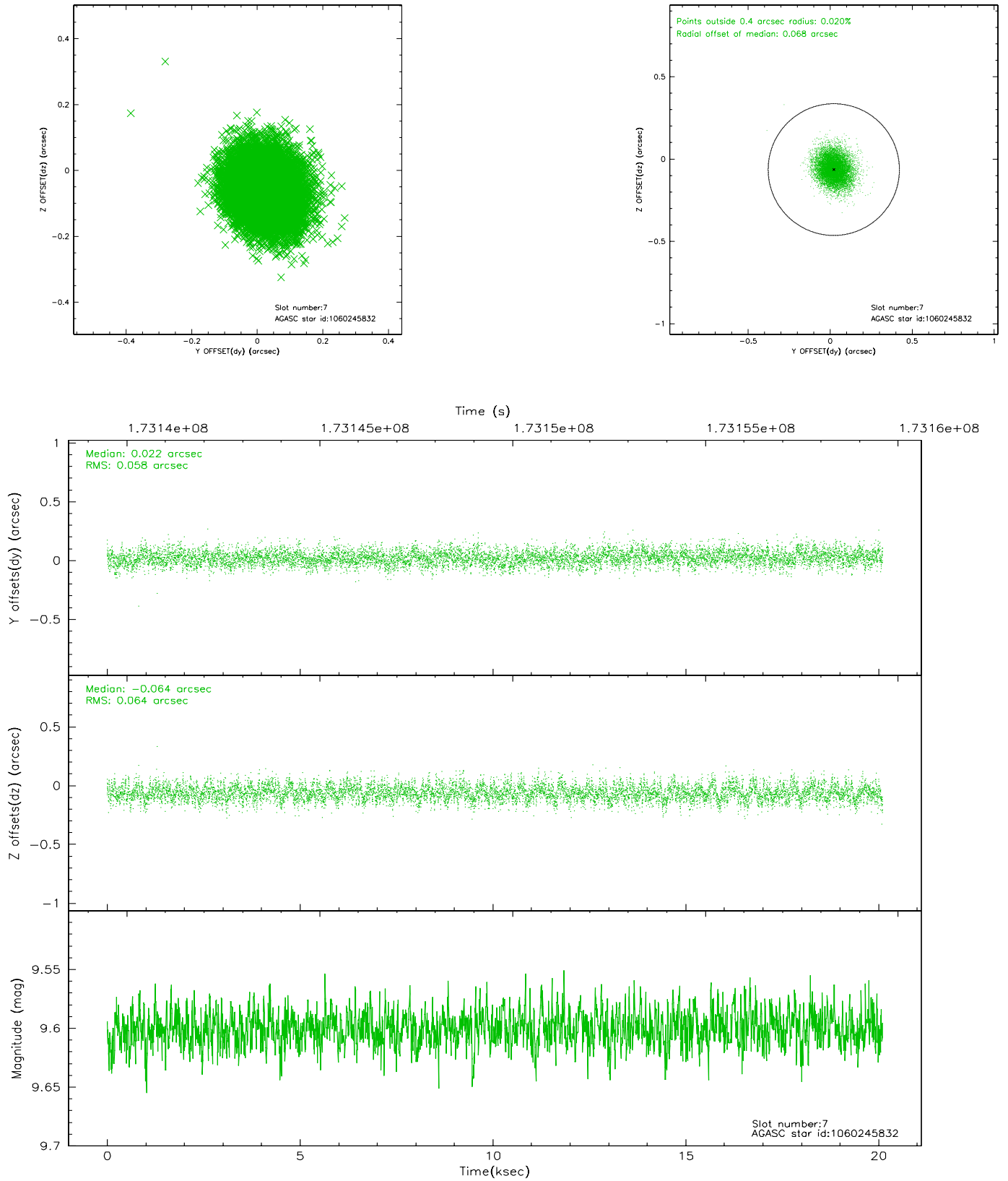
2.4.3 Slot 5



2.4.4 Slot 6

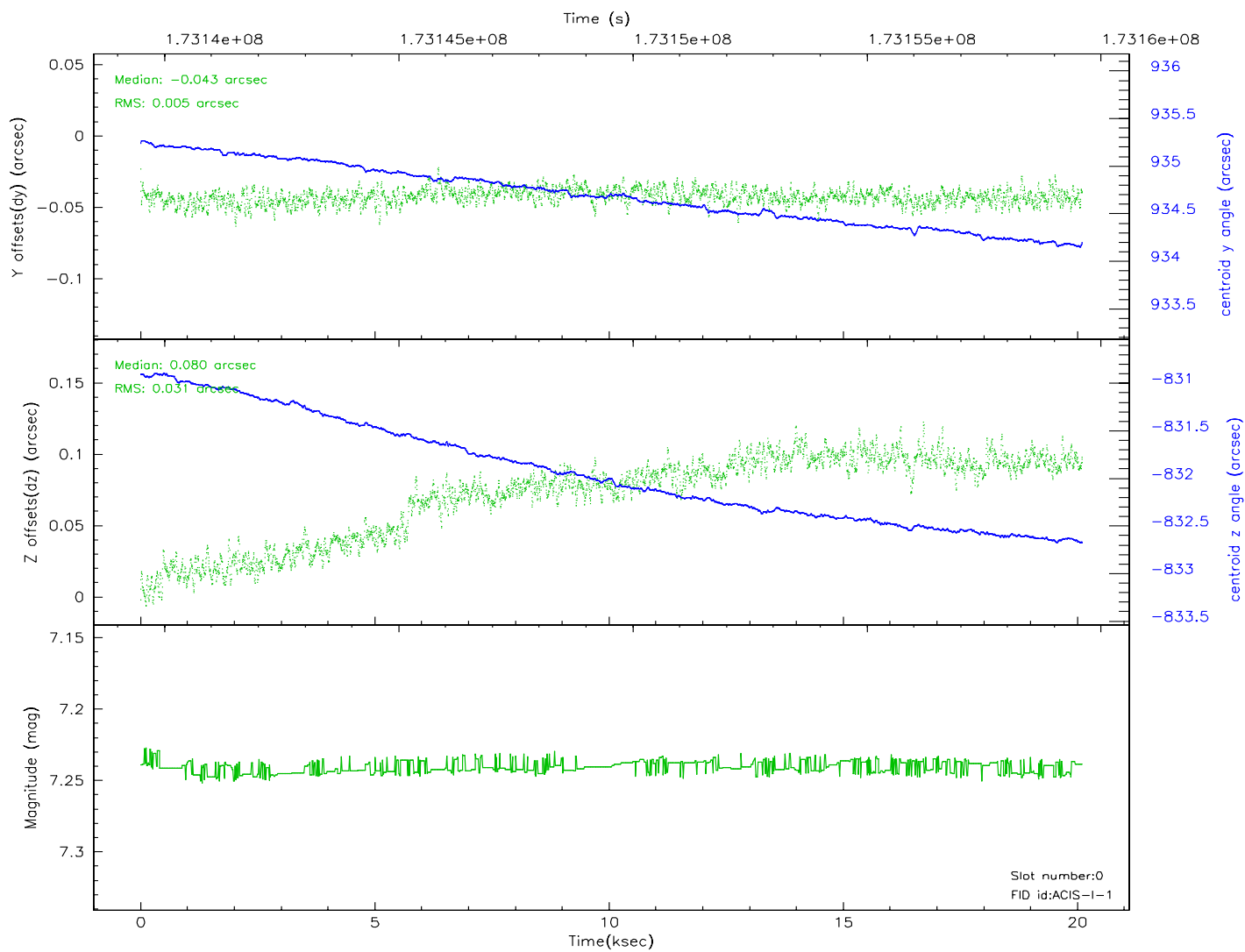
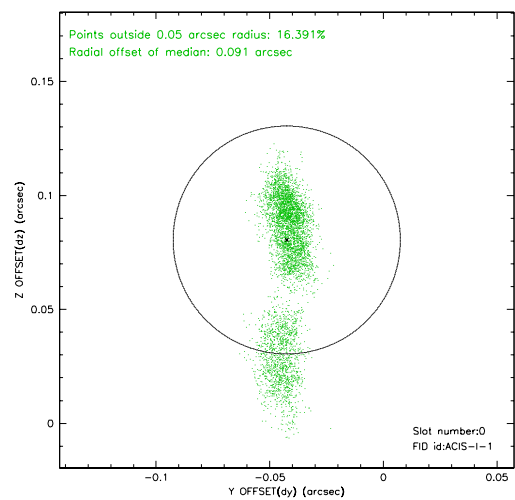
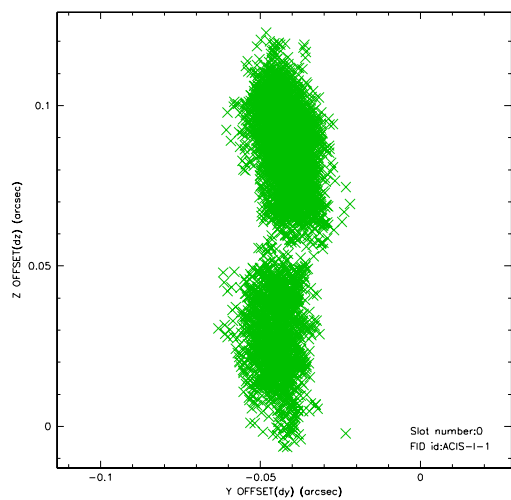


2.4.5 Slot 7

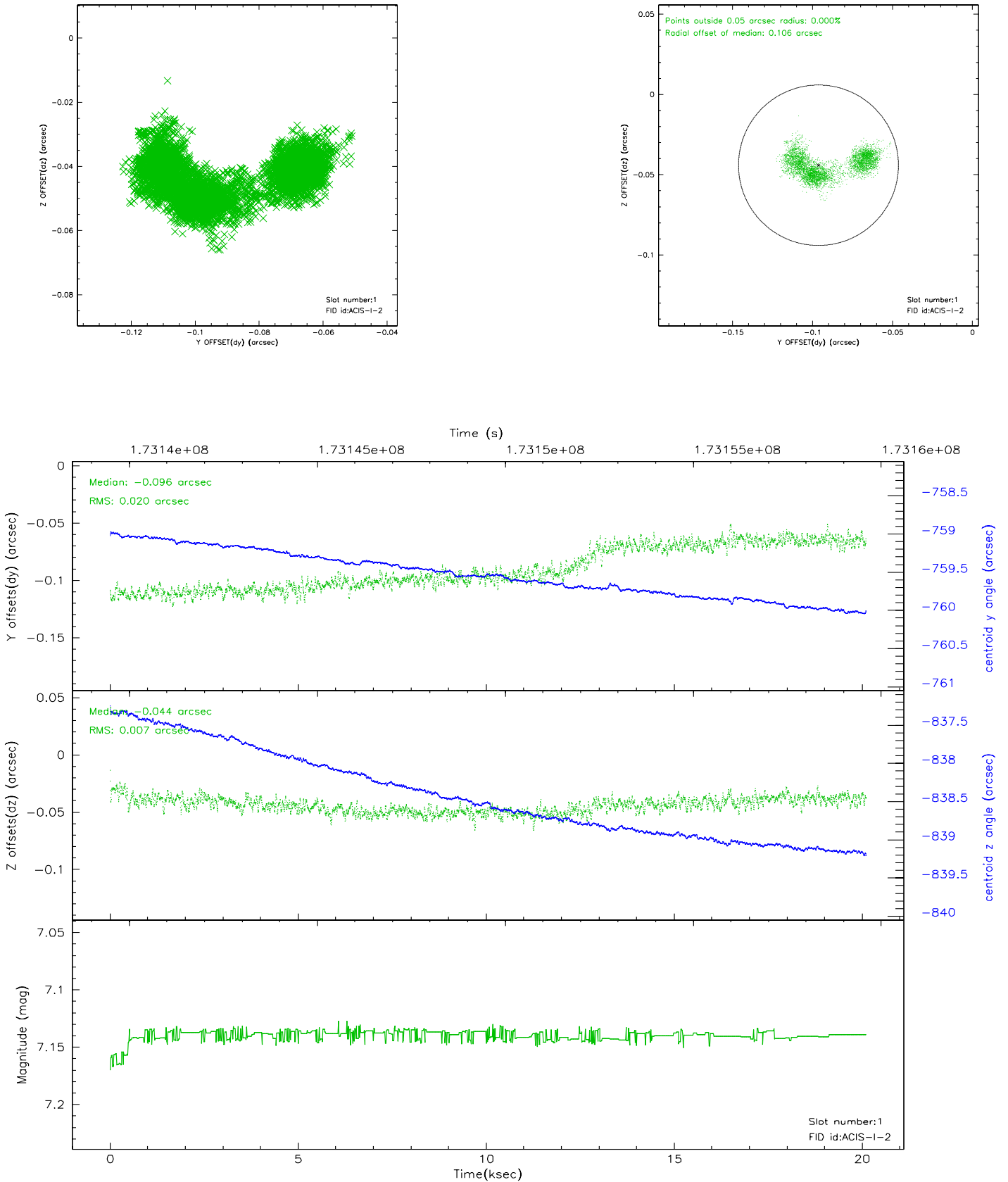


2.5 FID Slots

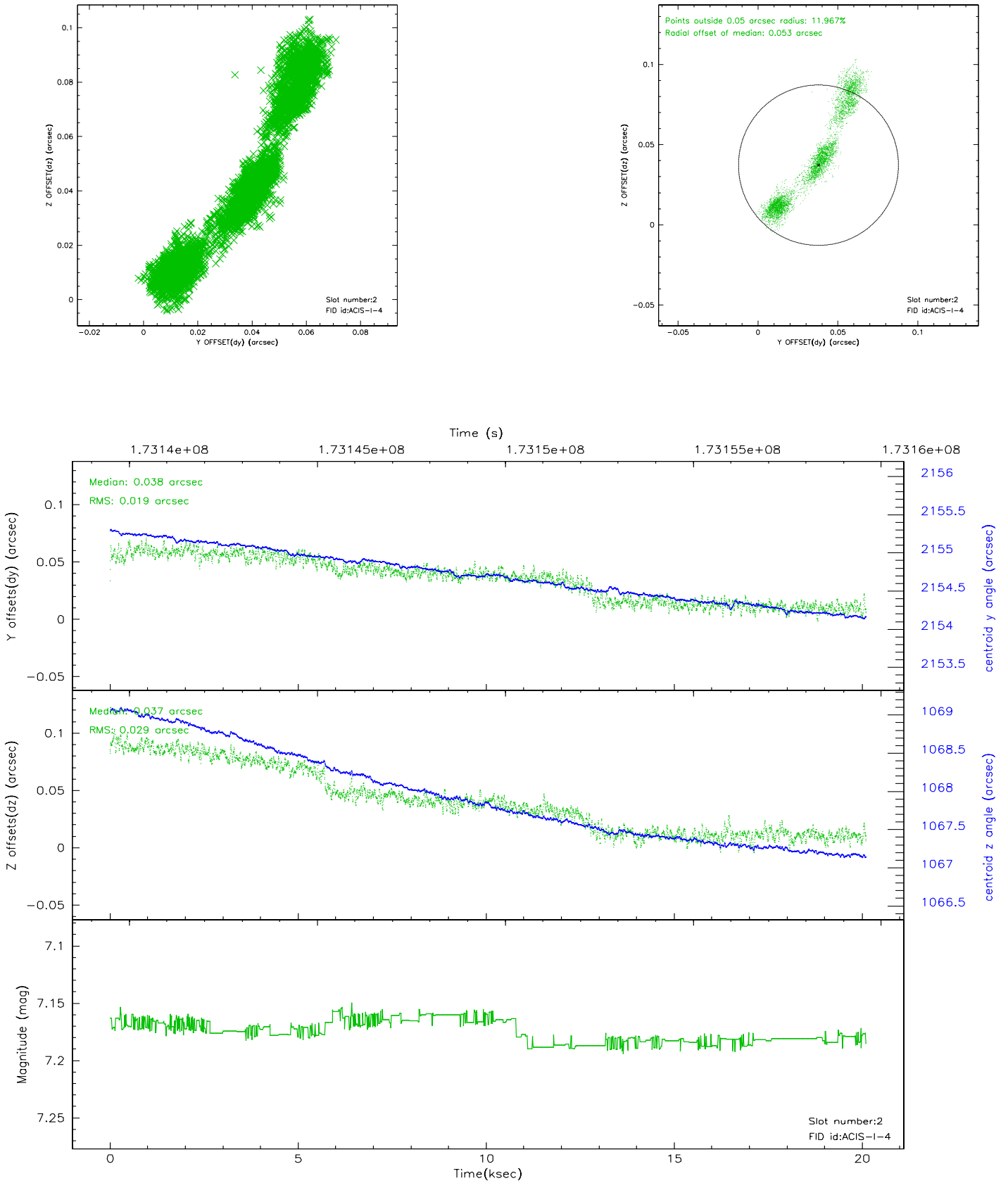
2.5.1 Slot 0



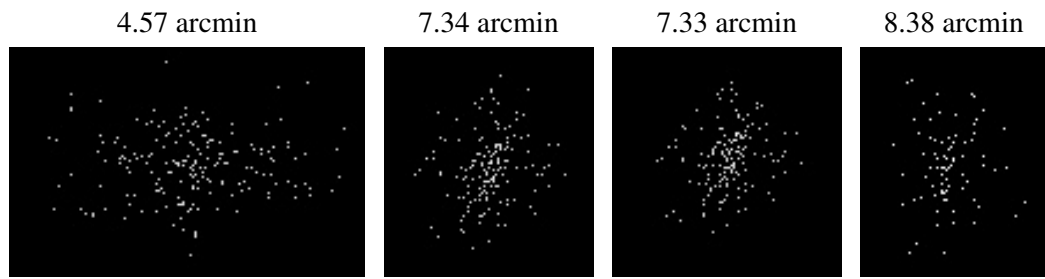
2.5.2 Slot 1



2.5.3 Slot 2



3 Point Sources



A Summary

A.1 Status

V&V Scientist	Jen Lauer
V&V Date (YYYY-MM-DD)	2006.08.10
V&V Edition	1
V&V Disposition and Status	OK
V&V Charge Time	20.106

A.2 Comments