

# V&V Reference Report

## L2 ASCDS Version : 7.6.9

Observation 4204 - L2 Version 001  
Chandra X-Ray Center

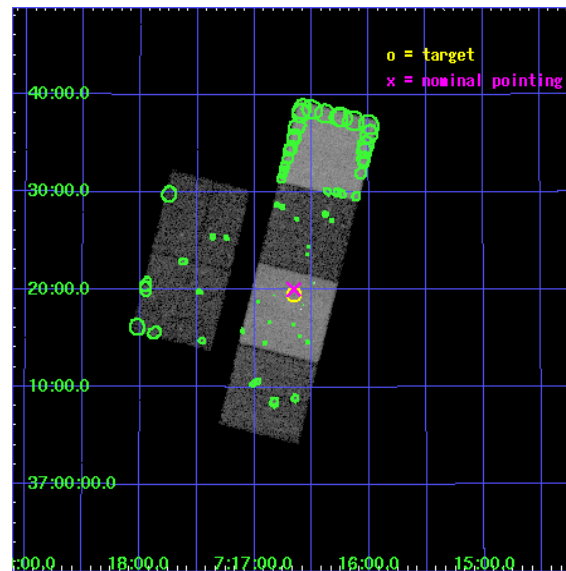
L2 Processing Date : Oct 13 2006

## Contents

<b>1</b>	<b>Front</b>	<b>2</b>
<b>2</b>	<b>OBI</b>	<b>3</b>
2.1	OBI . . . . .	3
2.1.1	Images . . . . .	3
2.1.2	Bias . . . . .	3
2.1.3	Parameters . . . . .	4
2.1.4	Events . . . . .	4
2.2	Compared Parameters . . . . .	5
2.3	Aspect . . . . .	6
2.4	Star Slots . . . . .	9
2.4.1	Slot 3 . . . . .	9
2.4.2	Slot 4 . . . . .	10
2.4.3	Slot 5 . . . . .	11
2.4.4	Slot 6 . . . . .	12
2.4.5	Slot 7 . . . . .	13
2.5	FID Slots . . . . .	14
2.5.1	Slot 0 . . . . .	14
2.5.2	Slot 1 . . . . .	15
2.5.3	Slot 2 . . . . .	16
<b>3</b>	<b>Point Sources</b>	<b>17</b>
<b>A</b>	<b>Summary</b>	<b>18</b>
A.1	Status . . . . .	18
A.2	Comments . . . . .	18

# 1 Front

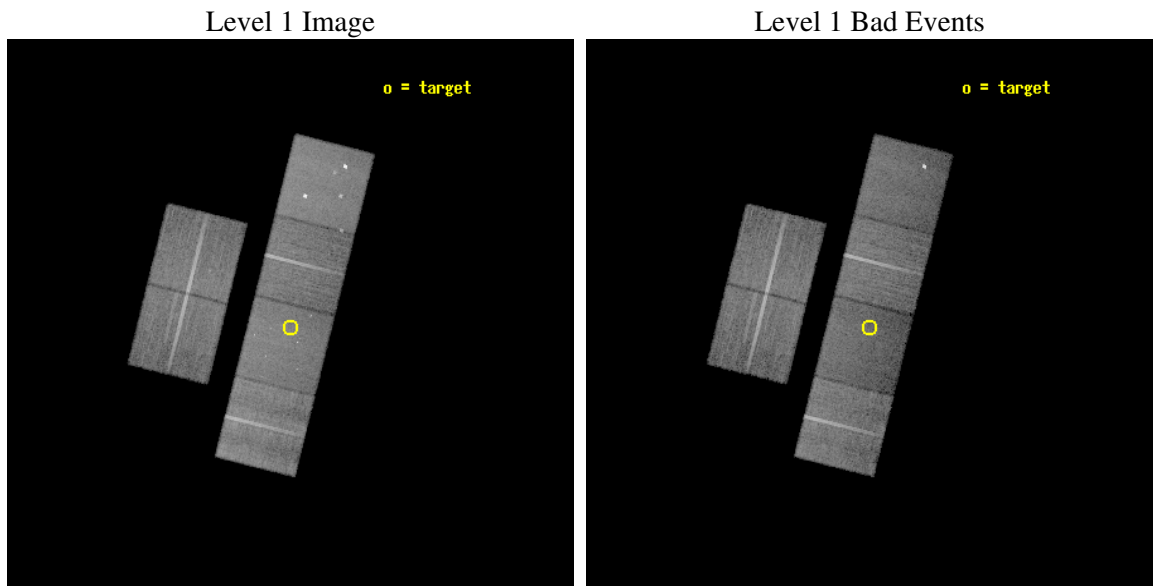
seq_num	800360
obs_id	4204
title	THE NATURE OF LOW SURFACE BRIGHTNESS X-RAY CLUSTERS OF GALAXIES
observer	Prof. David Buote
object	1310
dtcycle	0
cycle	P
ra_targ	109.165
dec_targ	37.324389
ra_nom	109.1641521001
dec_nom	37.334010710168
roll_nom	104.07374458737
revision	2
ontime	23919.999910891
livetime	23617.110469125
ontime2	23913.518020123
ontime3	23916.758930594
ontime5	23916.758940637
ontime6	23919.999910891
ontime7	23919.999910891
ontime8	23919.999910891
l2events	180289



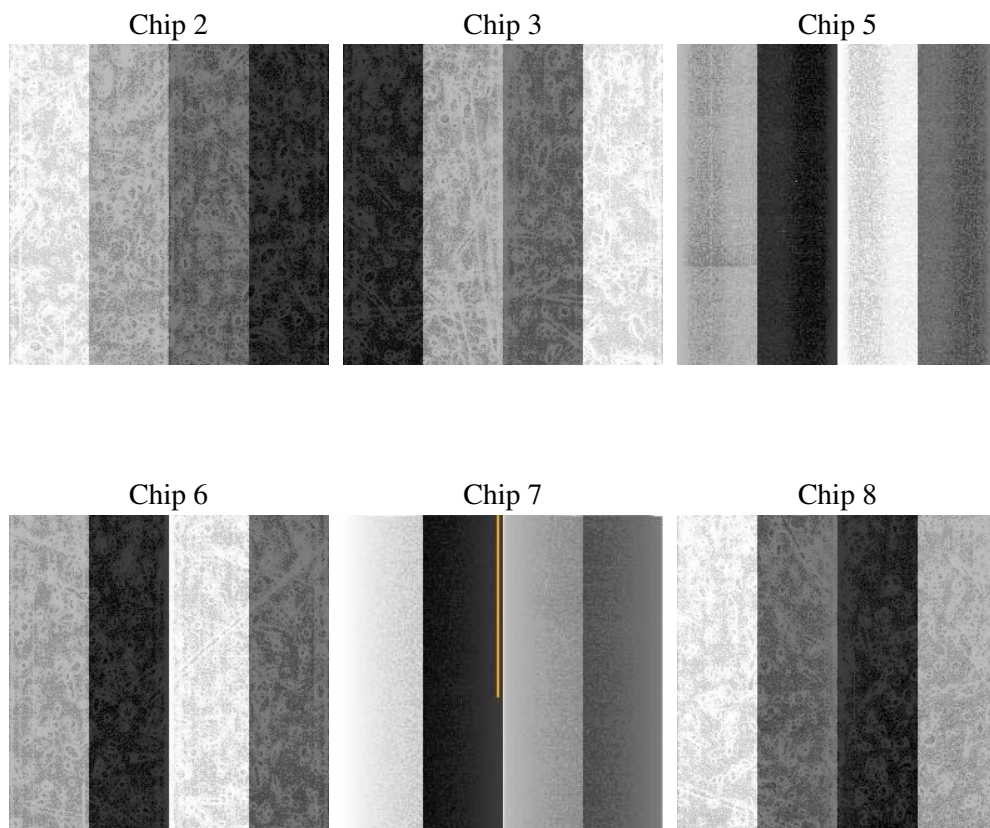
## 2 OBI

### 2.1 OBI

#### 2.1.1 Images



#### 2.1.2 Bias



### 2.1.3 Parameters

obi_num	0
ascdsver	7.6.9
caldsver	3.2.3
date	2006-10-13T21:10:30
revision	2

sched_exp_time	24000.000000
ontime	23925.105508208
ontime2	23918.62361744
ontime3	23921.864527911
ontime5	23921.864537954
ontime6	23925.105508208
ontime7	23925.105508208
ontime8	23925.105508208
l1events	870352

### 2.1.4 Events

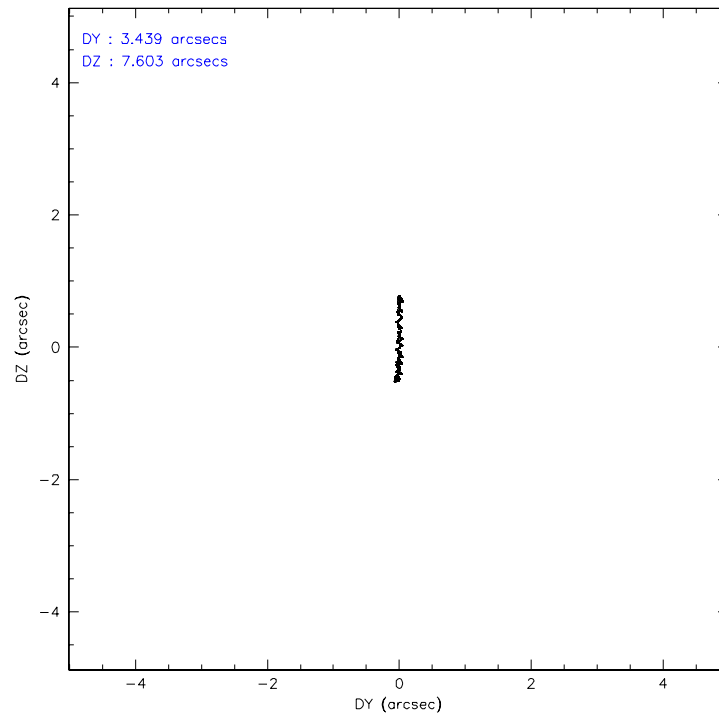
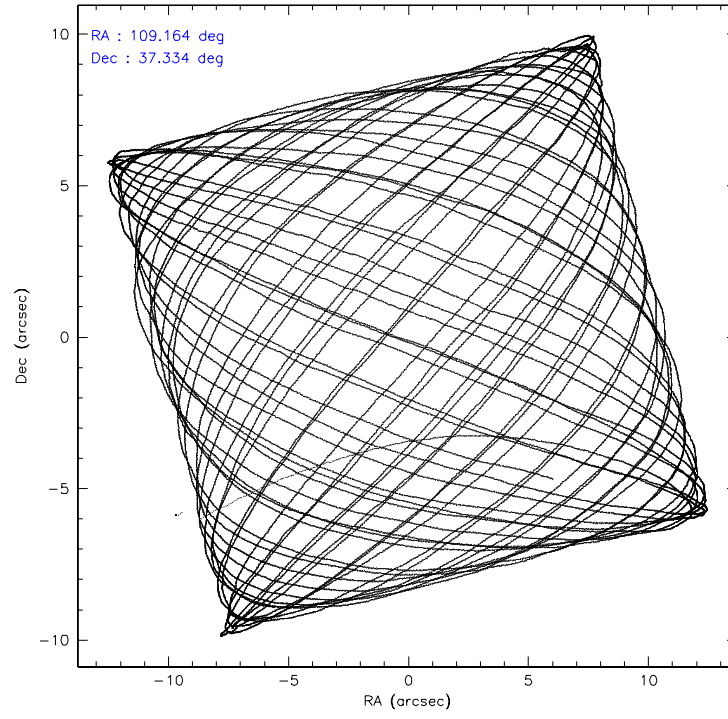
	ccd 2	ccd 3	ccd 5	ccd 6	ccd 7	ccd 8
level 1 events	137076	125702	175754	130721	140386	160713
rejected events	124554	114087	90375	117008	79023	124324
rejected %	90%	90%	51%	89%	56%	77%

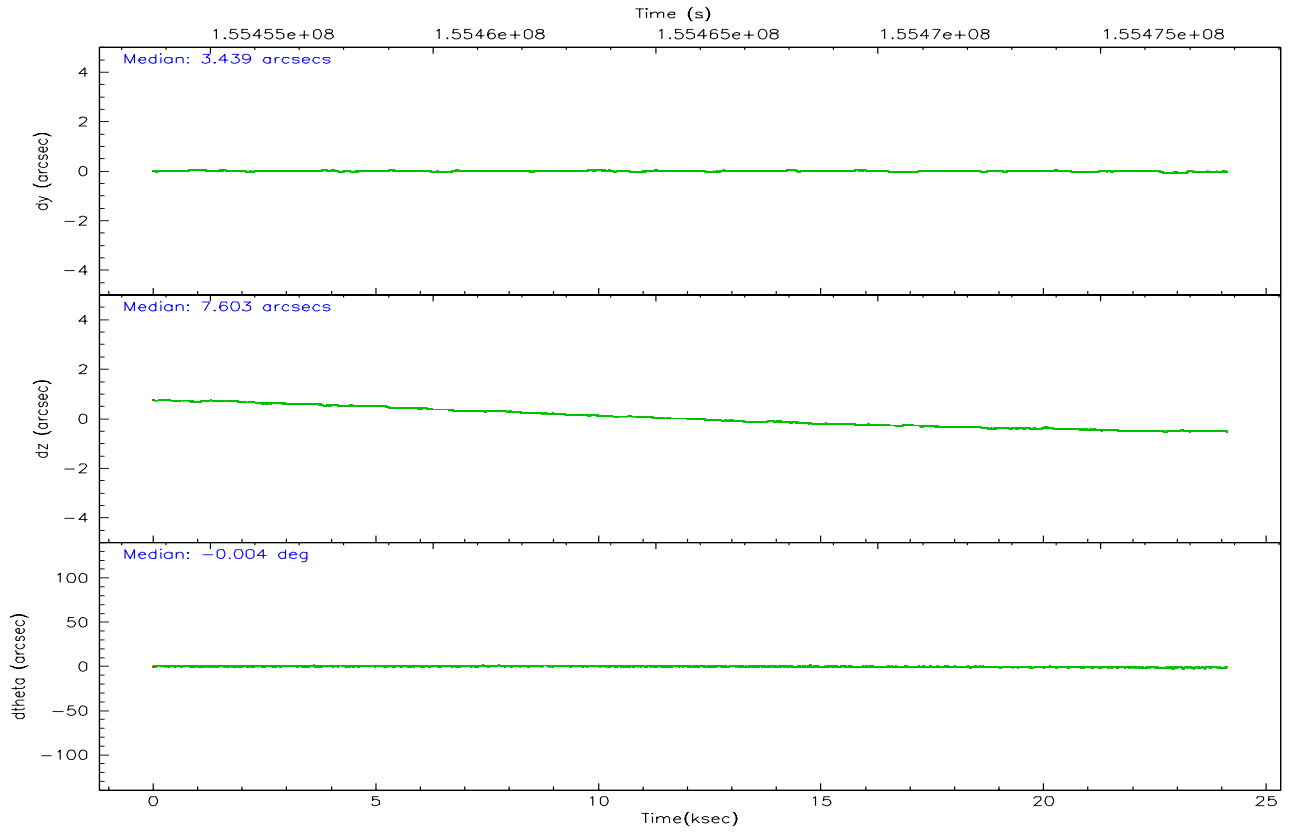
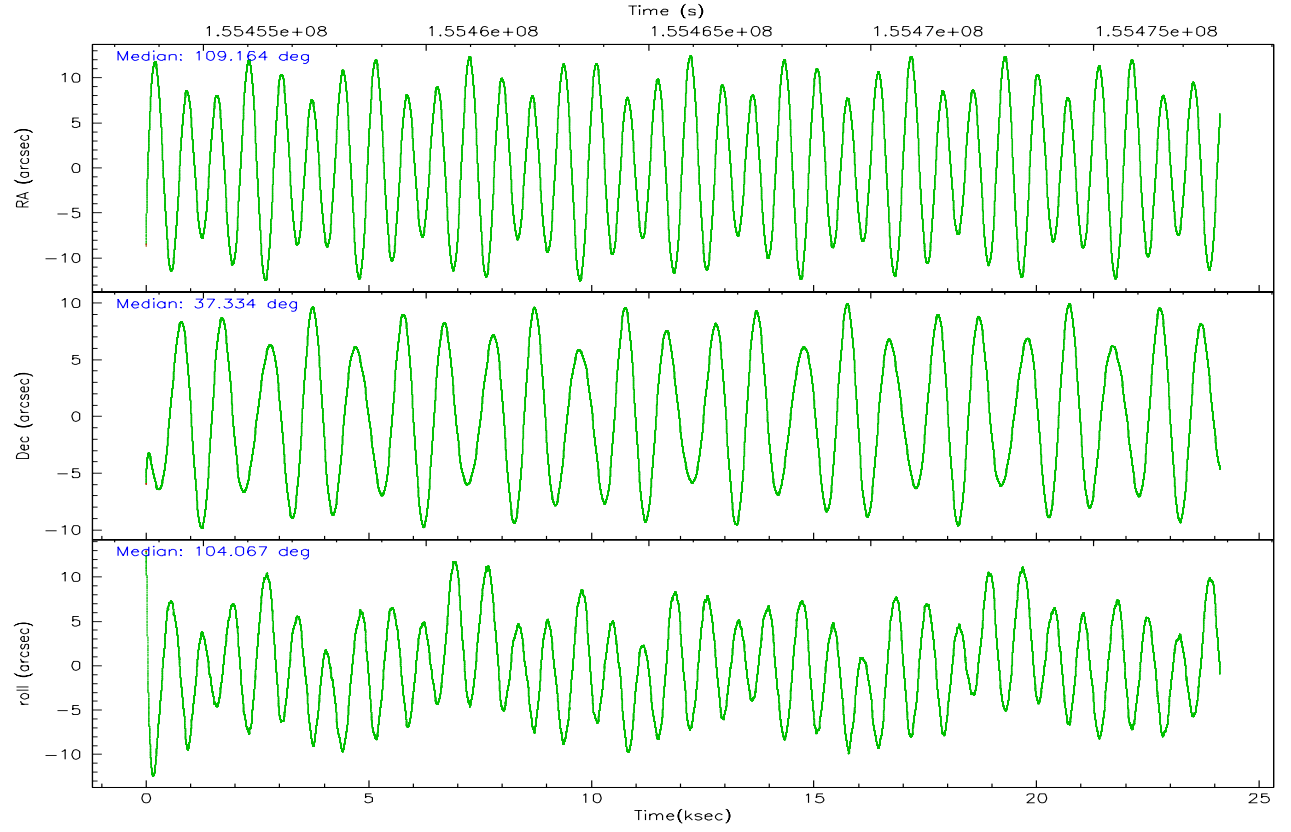
	ccd 2	ccd 3	ccd 5	ccd 6	ccd 7	ccd 8
grade 0 events	4656	4227	9724	5154	4314	11138
	3%	3%	5%	3%	3%	6%
grade 1 events	65	69	61	62	79	93
	0%	0%	0%	0%	0%	0%
grade 2 events	2816	2381	26250	2846	15320	8015
	2%	1%	14%	2%	10%	4%
grade 3 events	1378	1420	2224	1514	3917	3970
	1%	1%	1%	1%	2%	2%
grade 4 events	1411	1355	1994	1458	3739	3631
	1%	1%	1%	1%	2%	2%
grade 5 events	4132	4733	9744	4922	10806	6791
	3%	3%	5%	3%	7%	4%
grade 6 events	2263	2232	45198	2741	34082	9639
	1%	1%	25%	2%	24%	5%
grade 7 events	120355	109285	80559	112024	68129	117436
	87%	86%	45%	85%	48%	73%

## 2.2 Compared Parameters

Parameter	Planned	Actual	Parameter	Planned	Actual
Instrument	ACIS	ACIS	Obspar format version number	6	6
Detector	ACIS-235678	ACIS-235678	Obspar file type	PREDICTED	ACTUAL
Grating	NONE	NONE	Obspar update status	NONE	UPDATED
Data mode	VFAINT	VFAINT	Number of optional ACIS chips dropped	0	0
Observation mode	POINTING	POINTING	On-chip summing requested	N	N
Pointing RA	109.188305	109.1641521001048	Subarray requested	NONE	NONE
Pointing Dec	37.314734	37.33401071016819	Alternating exposures requested	N	N
Pointing Roll	103.902466	104.0737445873712	Primary exposure time	0.000000	3.2
SIM focus pos (mm)	-0.684267	-0.6828225247311905			
SIM defocus (mm)	0	0.001444936568705701			
SIM translation stage pos (mm)	-190.132523	-190.1400660498719			
SIM translation stage offset (mm)	0	0.00754346686406393			
Observation start time	155453837.184000	155452765.4332			
Observation start date	2002-12-05T05:36:13	2002-12-05T05:19:25			
Observation end time	155477837.184000	155478550.33428			
Observation end date	2002-12-05T12:16:13	2002-12-05T12:29:10			
Read mode	TIMED	TIMED			

## 2.3 Aspect





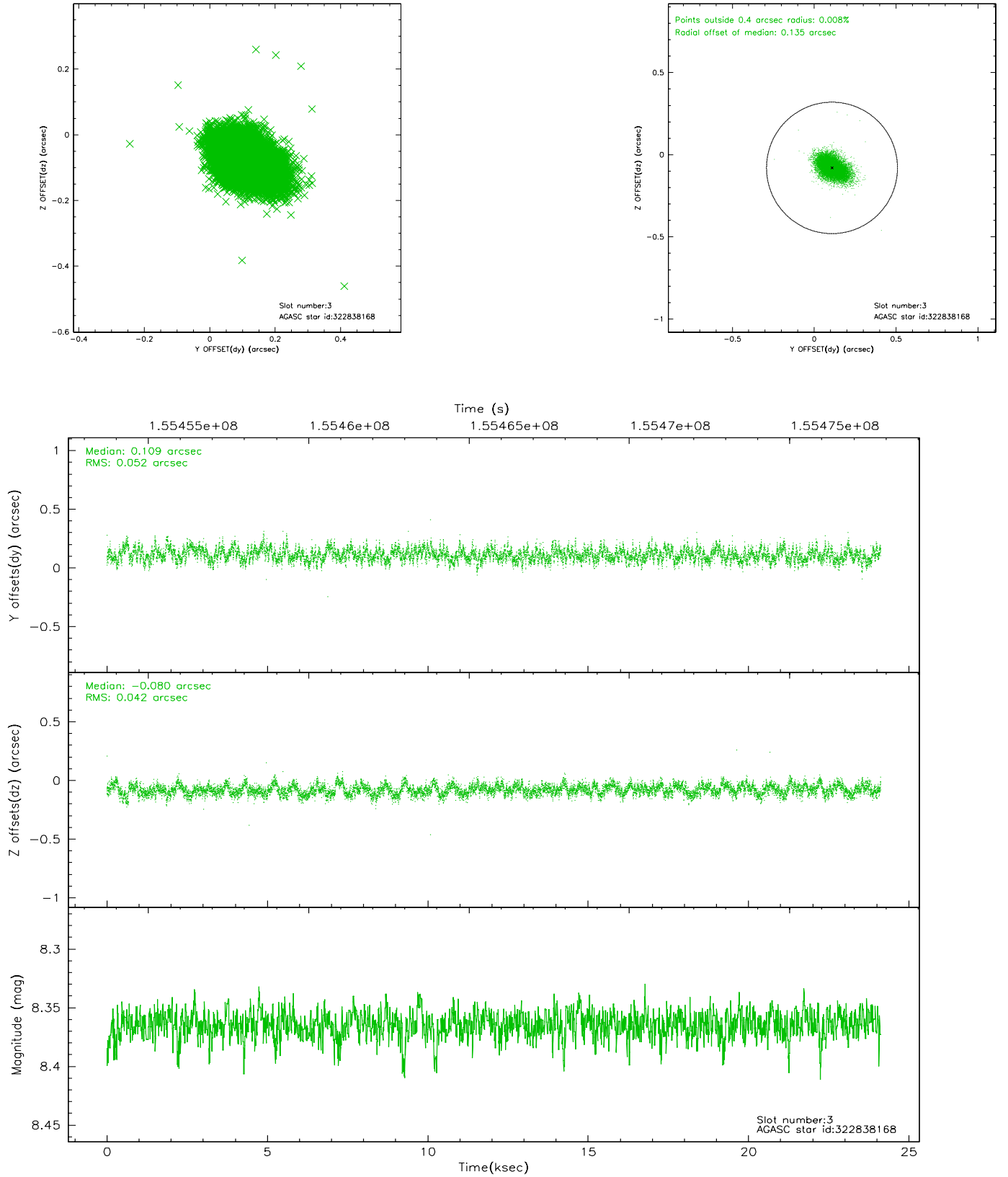
### Slot Statistics

slot	status	id	mag	n_pts	med_dy	med_dz	dr1	dr2	ra	dec	mean_y	mean_z
0	FID	ACIS-S-2	7.12	5886	0.008	0.029	0.008	0.012	0.000000	0.000000	-756.09	-1728.80
1	FID	ACIS-S-4	7.20	5885	-0.056	-0.012	0.005	0.009	0.000000	0.000000	2157.07	179.50
2	FID	ACIS-S-5	7.24	5885	0.017	-0.008	0.007	0.012	0.000000	0.000000	-1808.75	173.34
3	GUIDE	322838168	8.36	11767	0.109	-0.080	0.070	0.115	108.960114	36.785761	-1689.17	1096.14
4	GUIDE	385880840	9.53	11720	-0.305	0.075	0.145	0.233	109.189108	37.768015	1583.65	-393.62
5	GUIDE	385882952	9.62	11757	-0.055	0.042	0.135	0.216	109.757334	38.073091	2268.35	-2222.07
6	GUIDE	322838088	9.91	11765	0.039	-0.148	0.117	0.191	108.888893	36.899361	-1242.44	1195.55
7	GUIDE	322838488	9.54	11767	0.216	0.111	0.093	0.151	109.541631	36.767704	-2153.86	-516.11

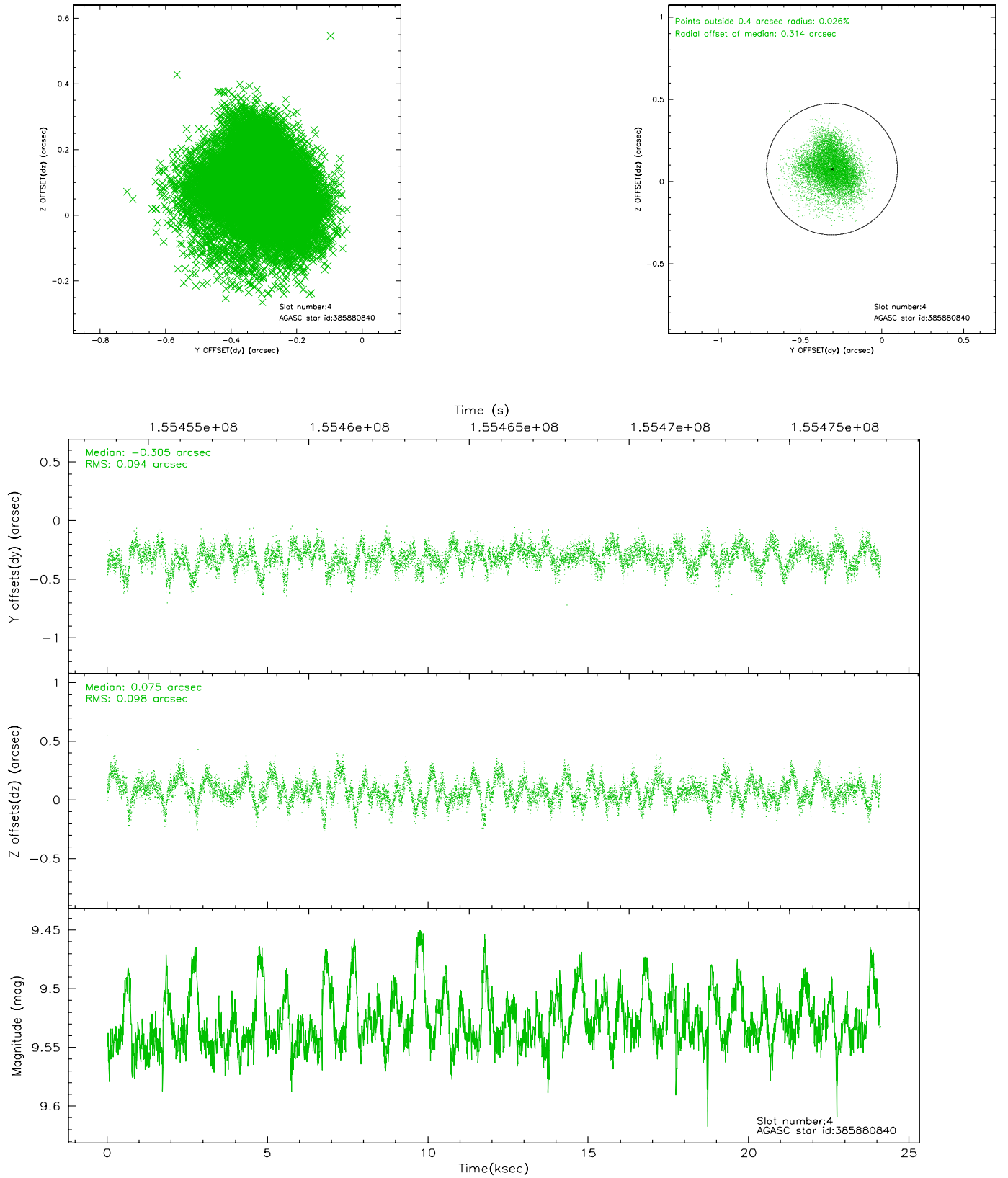


## 2.4 Star Slots

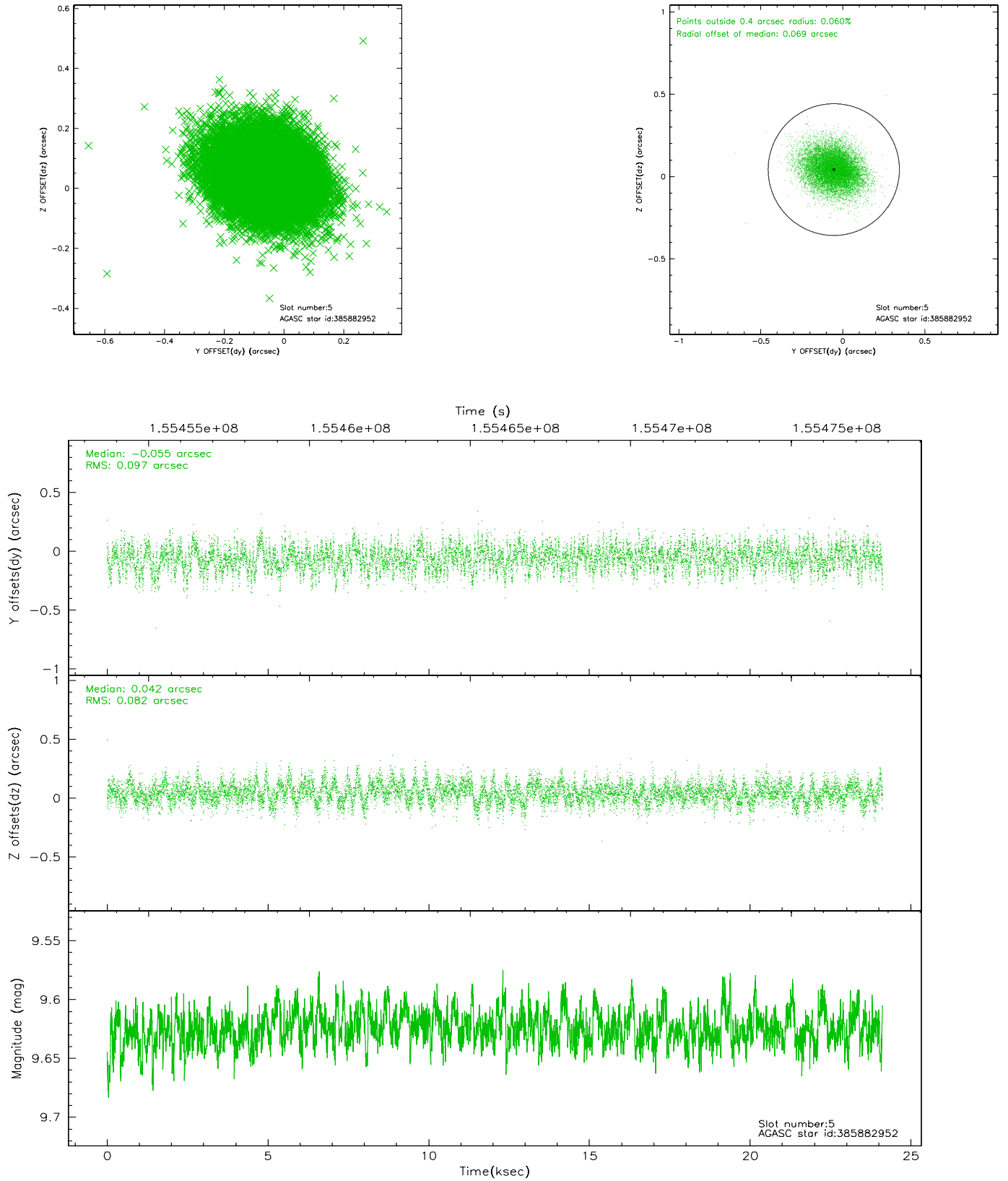
### 2.4.1 Slot 3



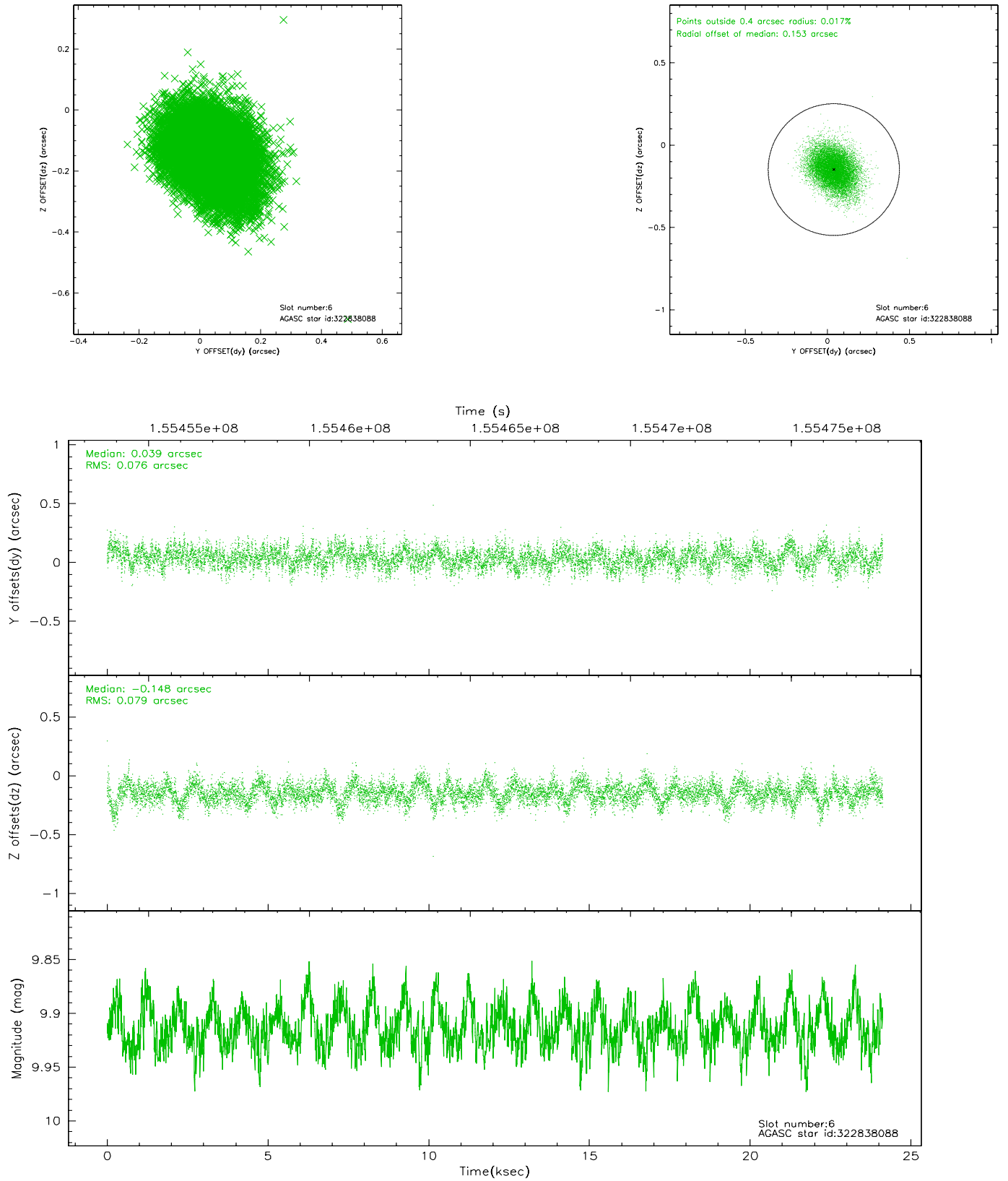
## 2.4.2 Slot 4



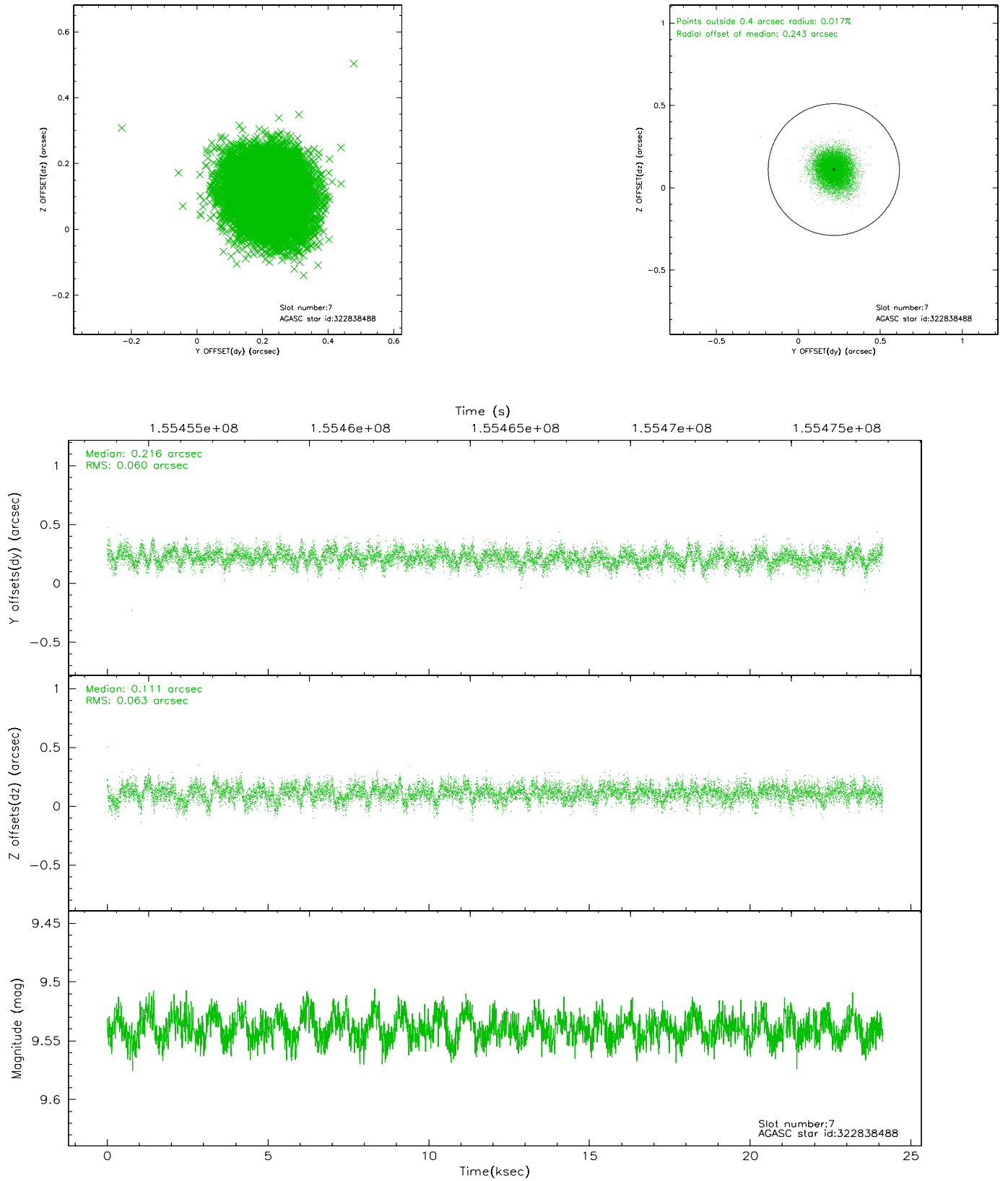
### 2.4.3 Slot 5



## 2.4.4 Slot 6

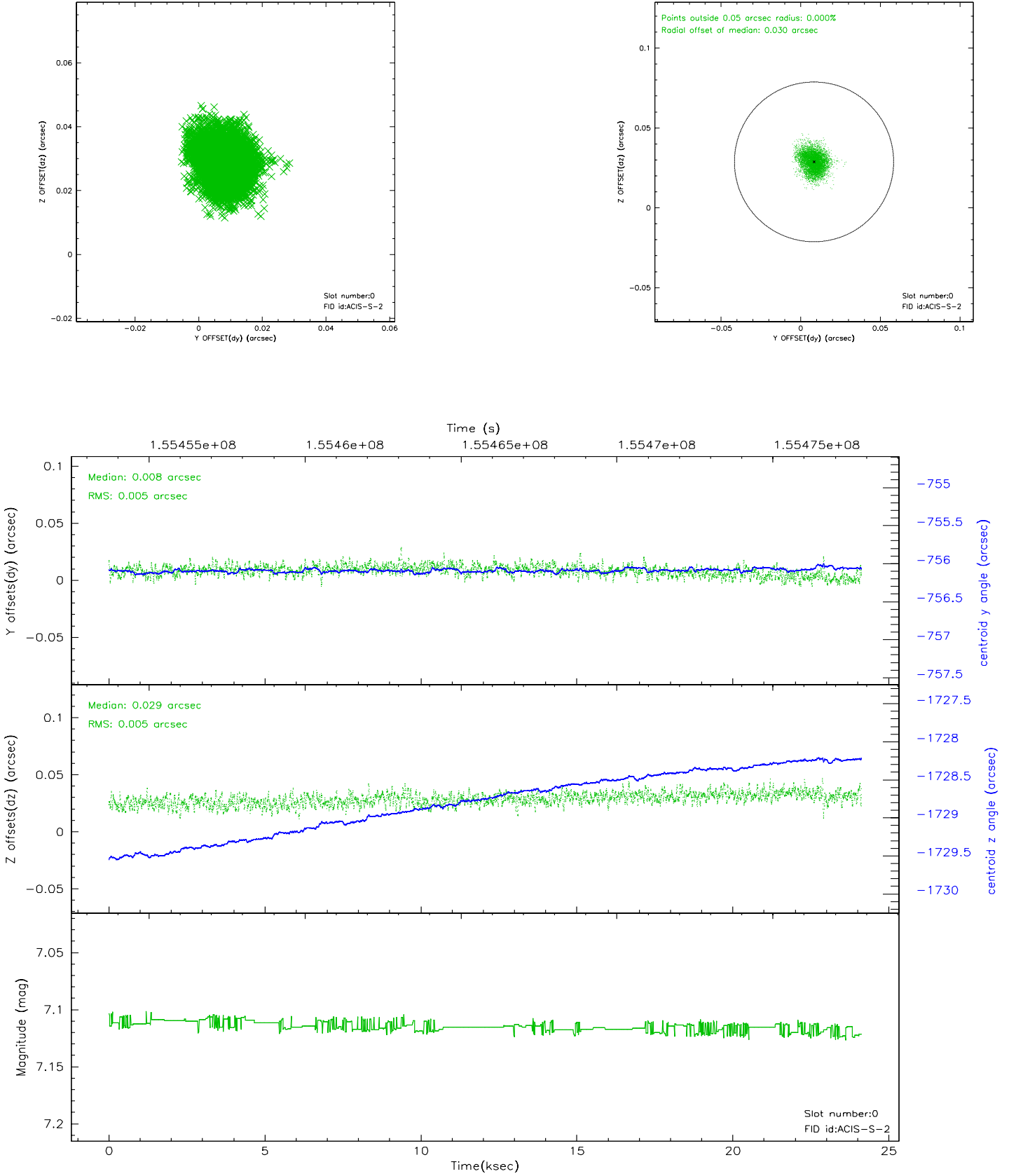


## 2.4.5 Slot 7

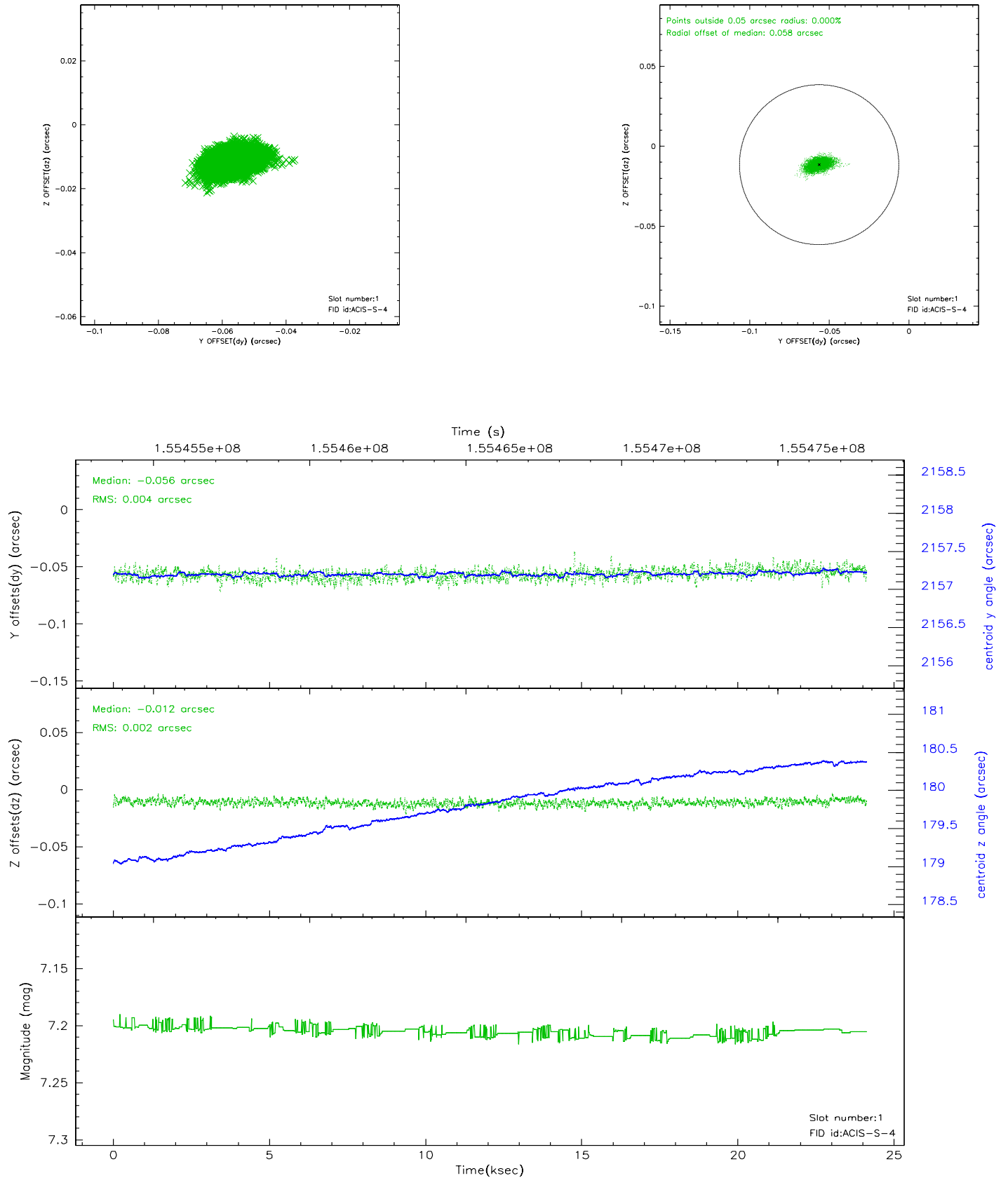


## 2.5 FID Slots

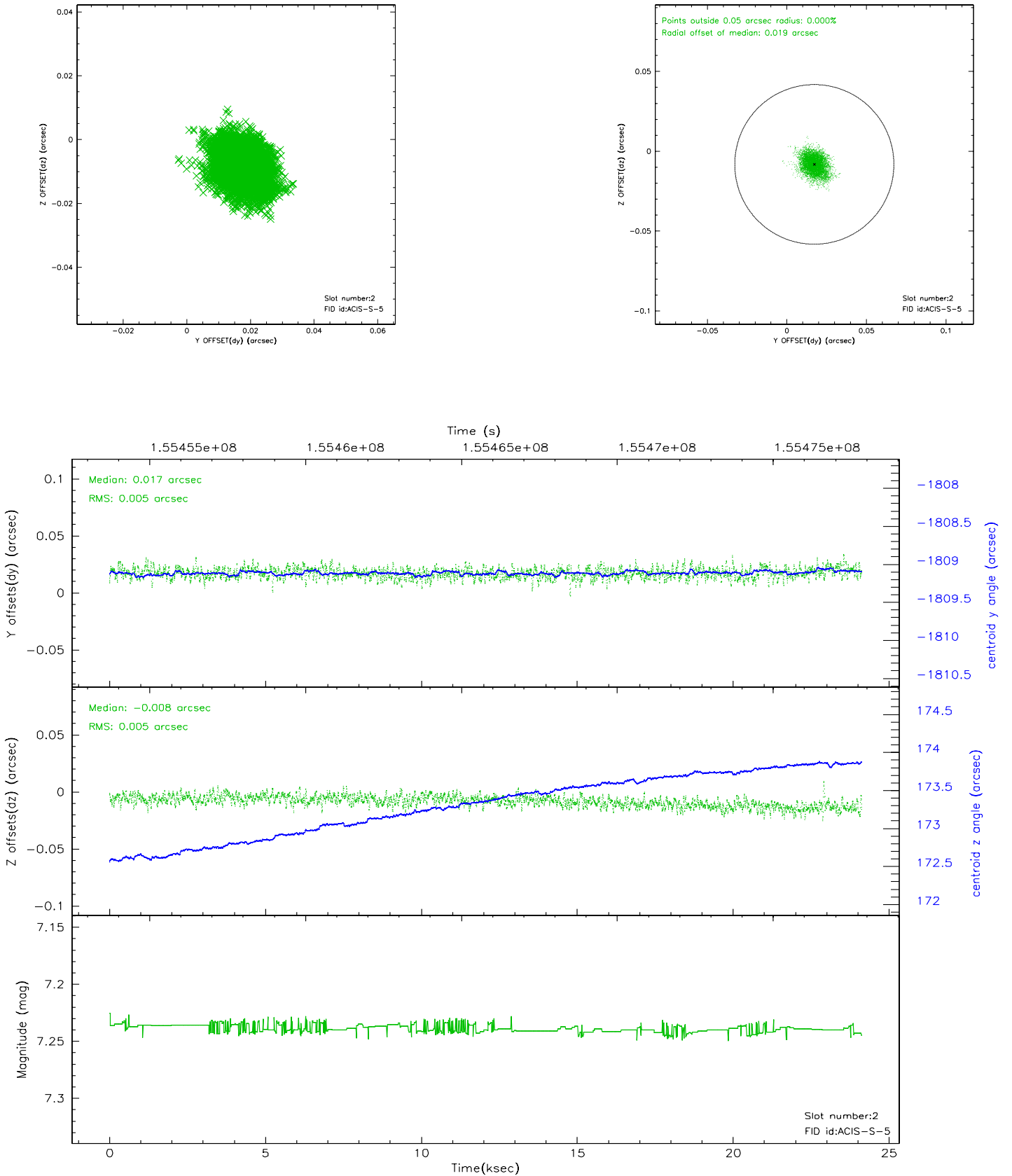
### 2.5.1 Slot 0



## 2.5.2 Slot 1

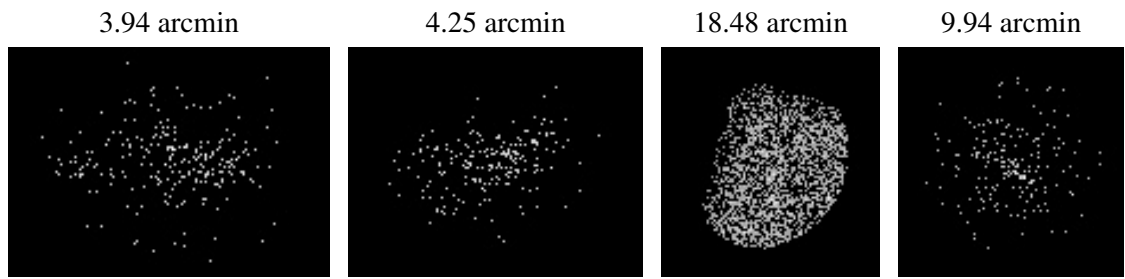


### 2.5.3 Slot 2





### 3 Point Sources



## A Summary

### A.1 Status

V&V Scientist	Beth Sundheim
V&V Date (YYYY-MM-DD)	2006.10.15
V&V Edition	1
V&V Disposition and Status	OK
V&V Charge Time	23.919

### A.2 Comments