

V&V Reference Report

L2 ASCDS Version : 8.4.5

Observation 4203 - L2 Version 3
Chandra X-Ray Center

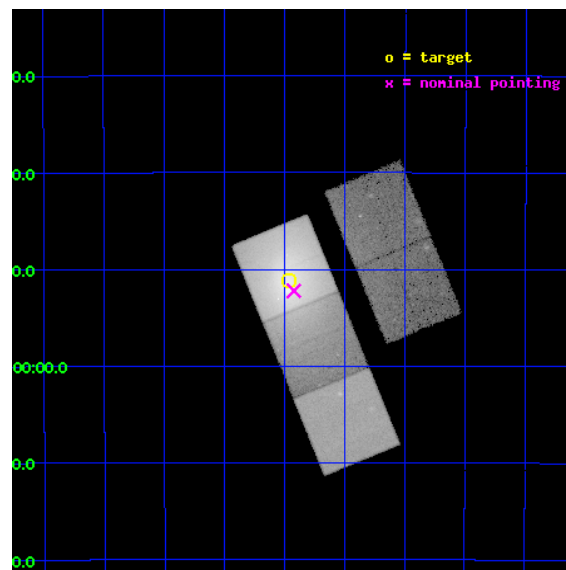
L2 Processing Date : Nov 1 2012

Contents

1	Front	2
2	OBI	3
2.1	OBI	3
2.1.1	Images	3
2.1.2	Bias	3
2.1.3	Parameters	4
2.1.4	Events	4
2.2	Compared Parameters	5
2.3	Aspect	6
2.4	Star Slots	9
2.4.1	Slot 3	9
2.4.2	Slot 4	10
2.4.3	Slot 5	11
2.4.4	Slot 6	12
2.4.5	Slot 7	13
2.5	FID Slots	14
2.5.1	Slot 0	14
2.5.2	Slot 1	15
2.5.3	Slot 2	16
A	Summary	17
A.1	Status	17
A.2	Comments	17

1 Front

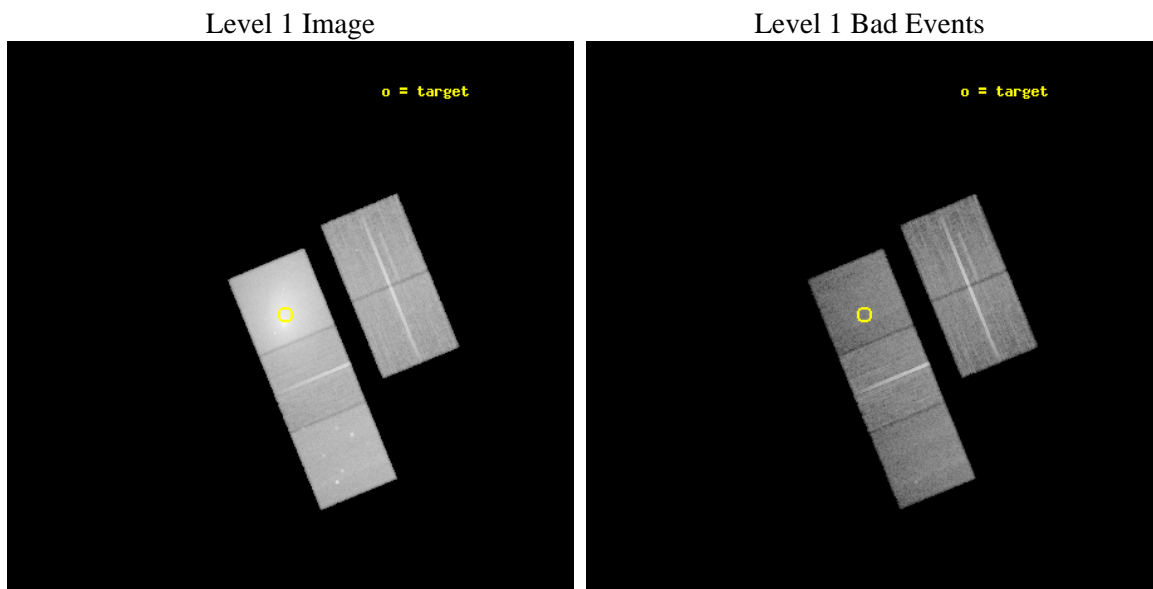
seq_num	800359	Sequence number
obs_id	4203	Observation id
title	TEMPERATURE AND METAL ABUNDANCE DISTRIBUTIONS OF THE HOT GAS WITHIN ABELL 3571	Proposal title
observer	Professor JIMMY IRWIN	Principal investigator
object	A3571	Source name
dtcycle	0	
cycle	P	events from which exps? Prim/Second/Both
ra_targ	206.86708	Observer's specified target RA [deg]
dec_targ	-32.85189	Observer's specified target Dec [deg]
ra_nom	206.85585502827	Nominal RA [deg]
dec_nom	-32.87040603139	Nominal Dec [deg]
roll_nom	247.7474933251	Nominal Roll [deg]
revision	3	Processing version of data
ontime	34437.196440369	Sum of GTIs [s]
livetime	33987.24911658	Livetime [s]
ontime2	34430.750379771	Sum of GTIs [s]
ontime3	34427.650399745	Sum of GTIs [s]
ontime5	34437.155400366	Sum of GTIs [s]
ontime6	34437.114360362	Sum of GTIs [s]
ontime7	34437.196440369	Sum of GTIs [s]
l2events	812453	Number of level 2 events



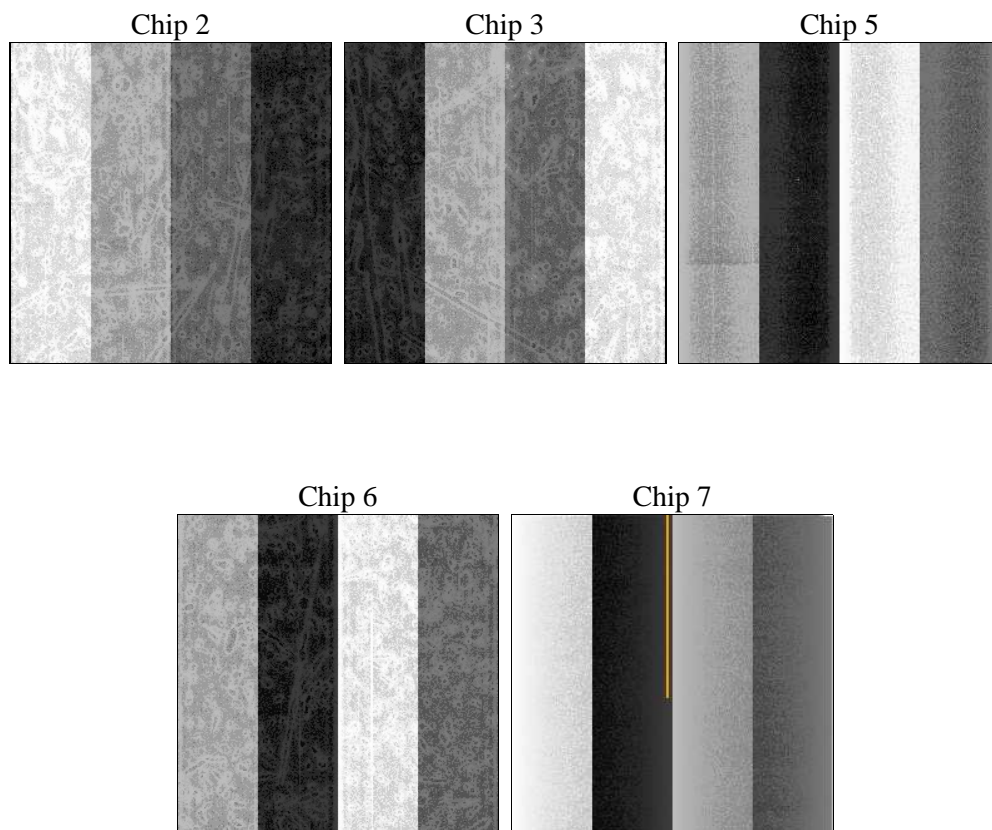
2 OBI

2.1 OBI

2.1.1 Images



2.1.2 Bias



2.1.3 Parameters

obi_num	0	Obi number	sched_exp_time	34592.000000	[s] Scheduled observation exposure time
ascdsver	8.4.5	Processing system revision	ontime	34437.196440369	Sum of GTIs [s]
caldsver	4.5.2	 	ontime2	34430.750379771	Sum of GTIs [s]
date	2012-11-01T13:17:21	Date and time of file creation	ontime3	34427.650399745	Sum of GTIs [s]
revision	3	Processing version of data	ontime5	34437.155400366	Sum of GTIs [s]
			ontime6	34437.114360362	Sum of GTIs [s]
			ontime7	34437.196440369	Sum of GTIs [s]
			l1events	1551325	Number of level 1 events

2.1.4 Events

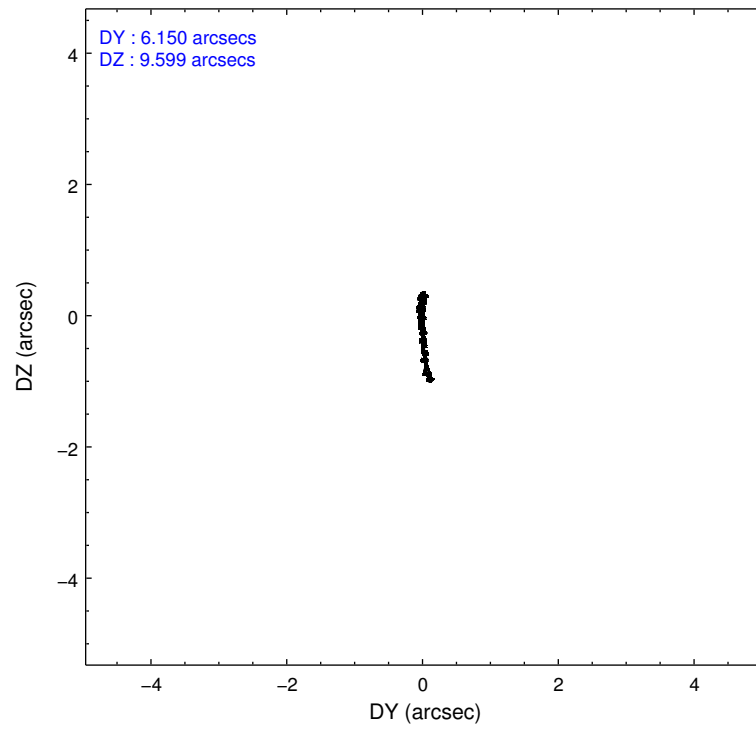
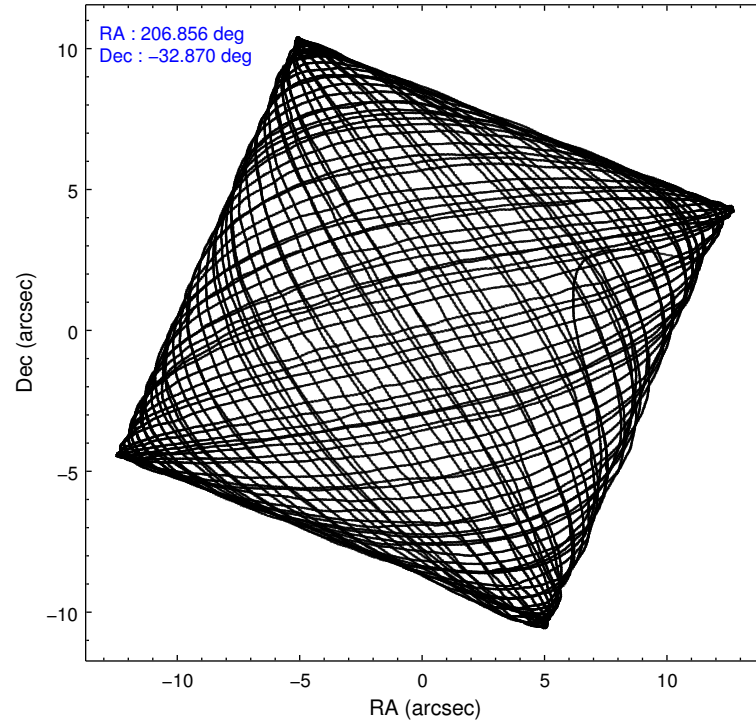
	ccd 2	ccd 3	ccd 5	ccd 6	ccd 7
level 1 events	190891	188629	263127	265115	643563
rejected events	163262	160461	120212	160433	109581
rejected %	85%	85%	45%	60%	17%

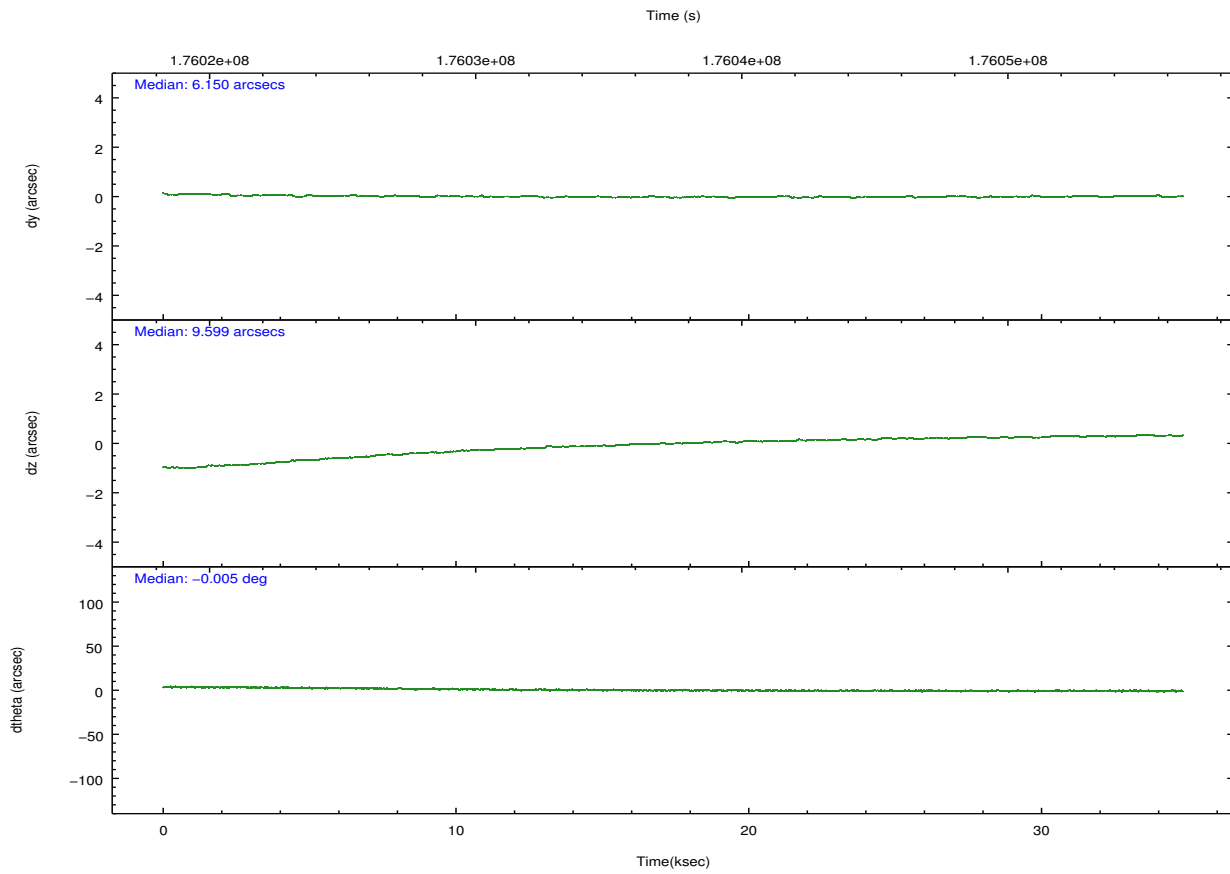
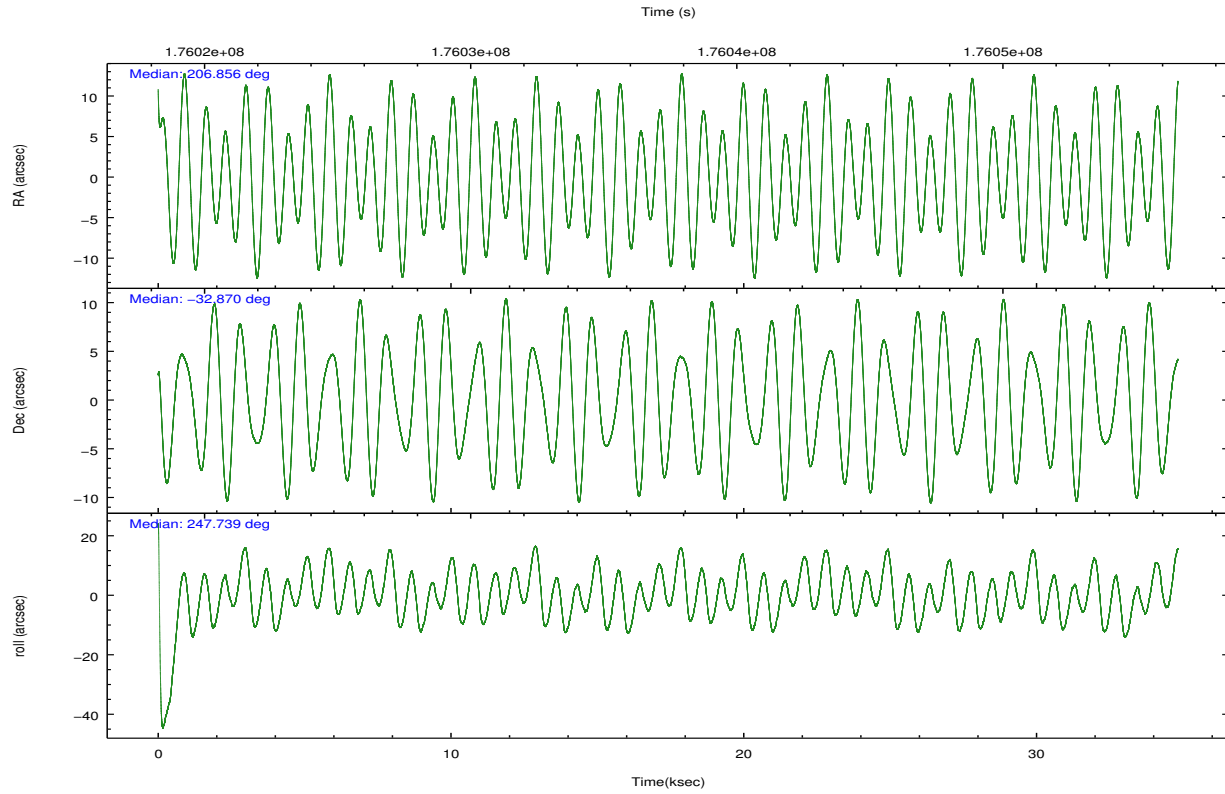
	ccd 2	ccd 3	ccd 5	ccd 6	ccd 7
grade 0 events	14741	15475	18642	76767	137807
	7%	8%	7%	28%	21%
grade 1 events	129	138	444	347	275
	0%	0%	0%	0%	0%
grade 2 events	5035	4553	40856	12693	133243
	2%	2%	15%	4%	20%
grade 3 events	2230	2328	7815	4725	60118
	1%	1%	2%	1%	9%
grade 4 events	2220	2306	7555	4475	59061
	1%	1%	2%	1%	9%
grade 5 events	5729	6718	19671	7263	23423
	3%	3%	7%	2%	3%
grade 6 events	3405	3506	68062	6030	143804
	1%	1%	25%	2%	22%
grade 7 events	157402	153605	100082	152815	85832
	82%	81%	38%	57%	13%

2.2 Compared Parameters

Parameter	Planned	Actual	Parameter	Planned	Actual
Instrument	ACIS	ACIS	Obspar format version number	7	7
Detector	ACIS-23567	ACIS-23567	Obspar file type	PREDICTED	ACTUAL
Grating	NONE	NONE	Obspar update status	NONE	UPDATED
Data mode	VFAINT	VFAINT	Number of optional ACIS chips dropped	0	0
Observation mode	POINTING	POINTING	On-chip summing requested	N	N
[deg] Pointing RA	206.851047	206.8558550282686	Subarray requested	NONE	NONE
[deg] Pointing Dec	-32.843457	-32.87040603138999	Alternating exposures requested	N	N
[deg] Pointing Roll	247.588234	247.7474933250951	[s] Primary exposure time	0.000000	3.1
[mm] SIM focus pos	-0.684267	-0.6828225247311905			
[mm] SIM defocus	0	0.001444936568705701			
[mm] SIM translation stage pos	-190.132523	-190.1400660498719			
[mm] SIM translation stage offset	0	0.00754346686406393			
[s] Observation start time (MET)	176020237.184000	176019232.42576			
Observation start date	2003-07-31T06:29:33	2003-07-31T06:13:52			
[s] Observation end time (MET)	176054829.184000	176055527.16481			
Observation end date	2003-07-31T16:06:05	2003-07-31T16:18:47			
Read mode	TIMED	TIMED			

2.3 Aspect



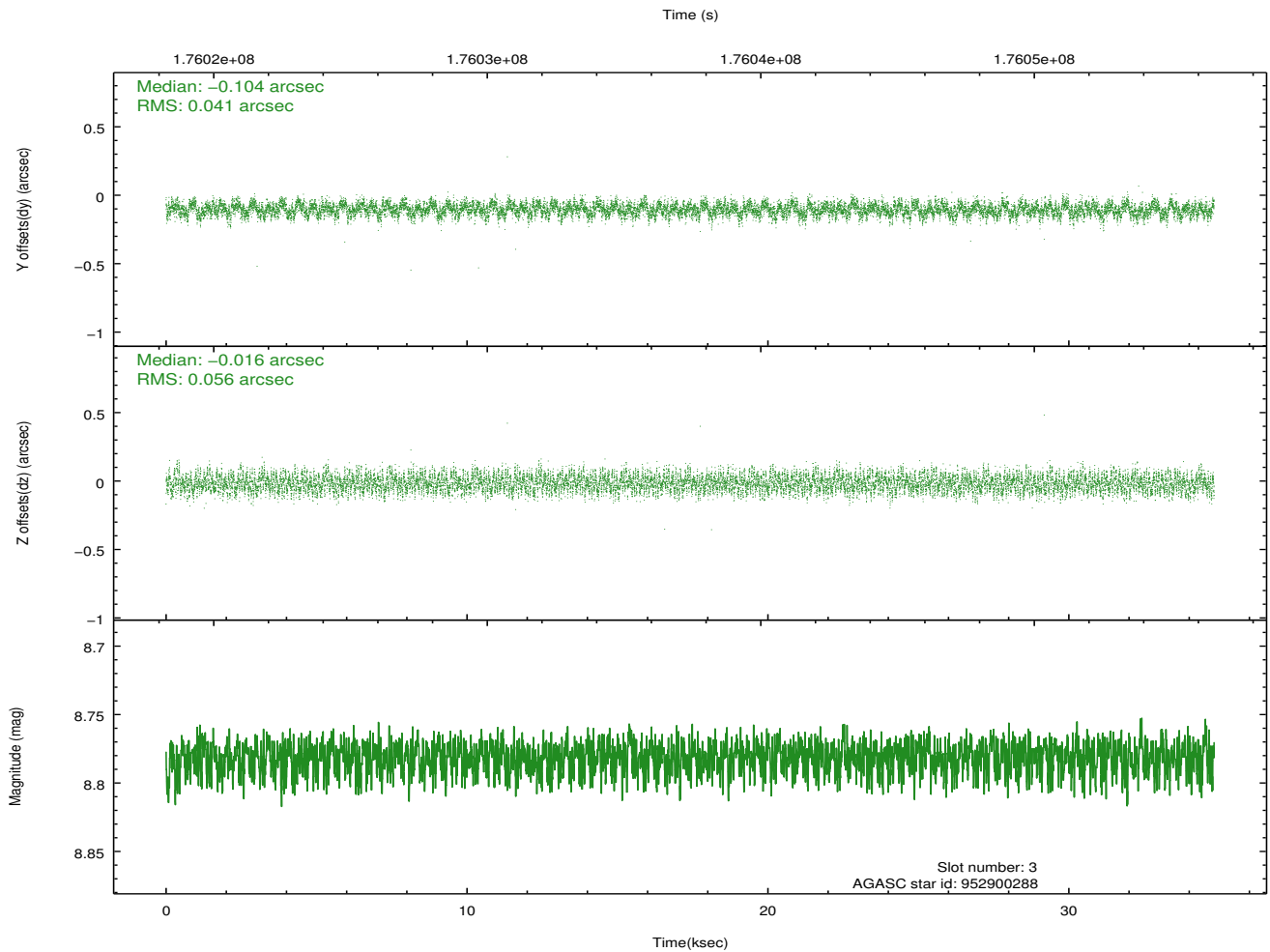
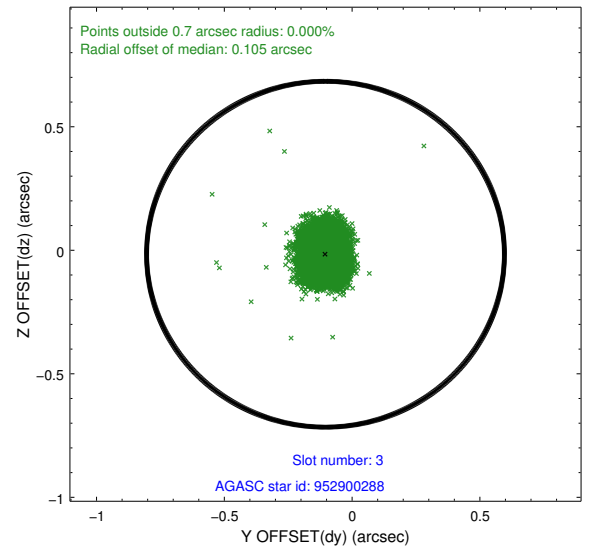
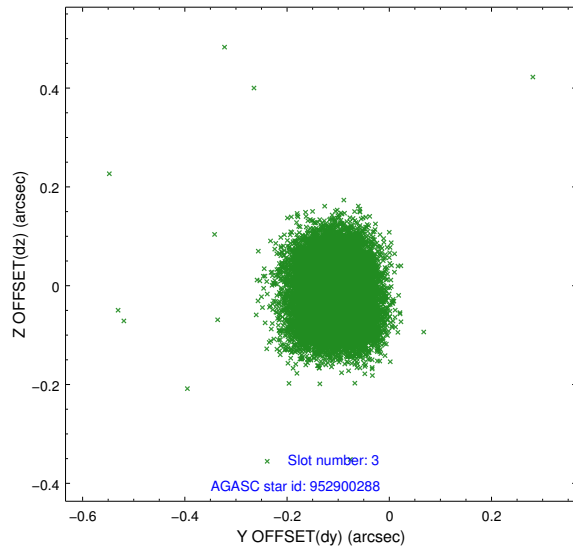


Slot Statistics

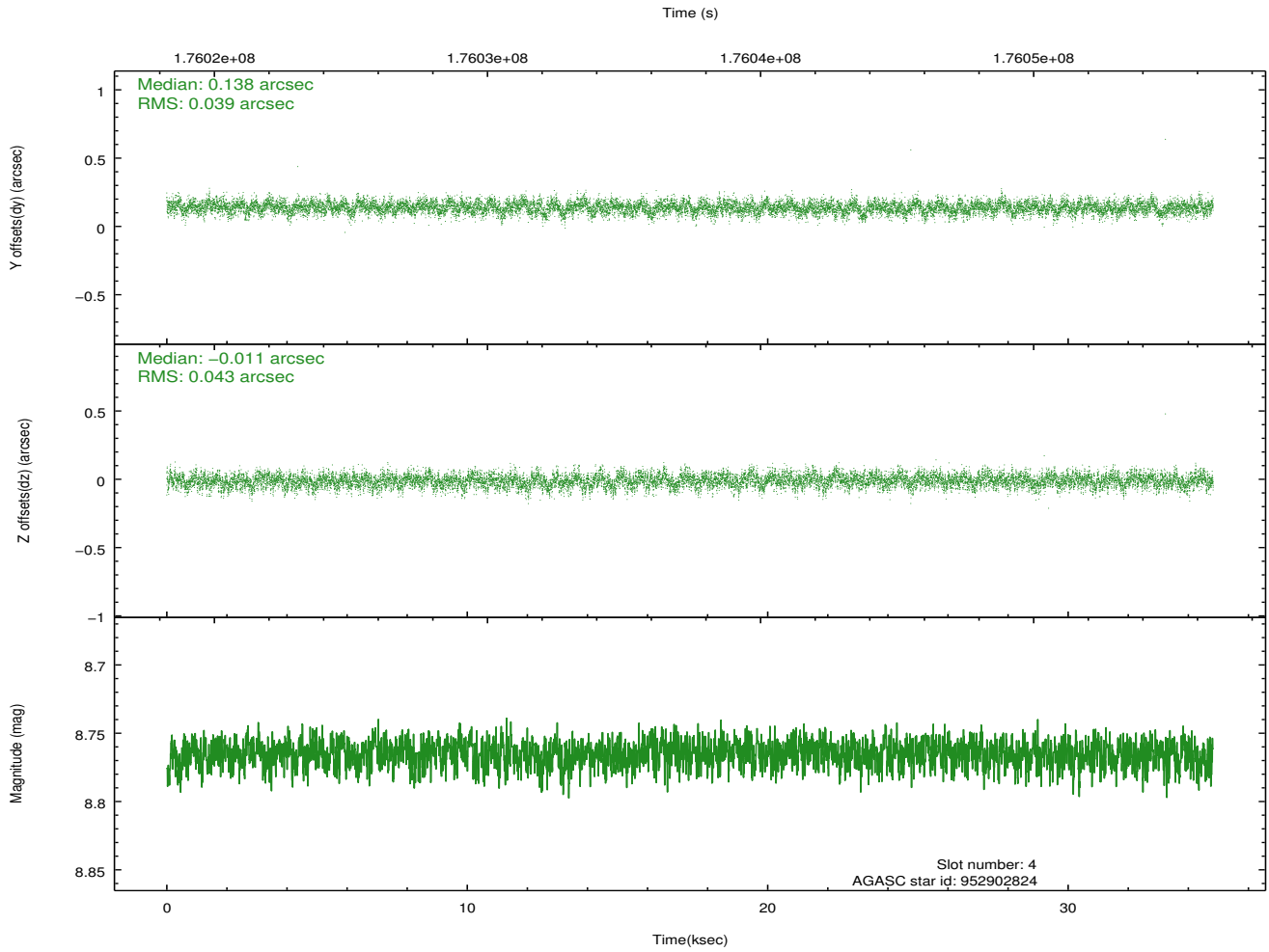
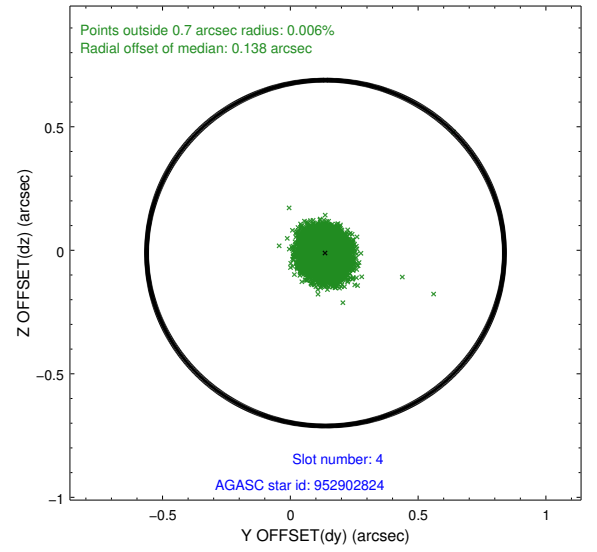
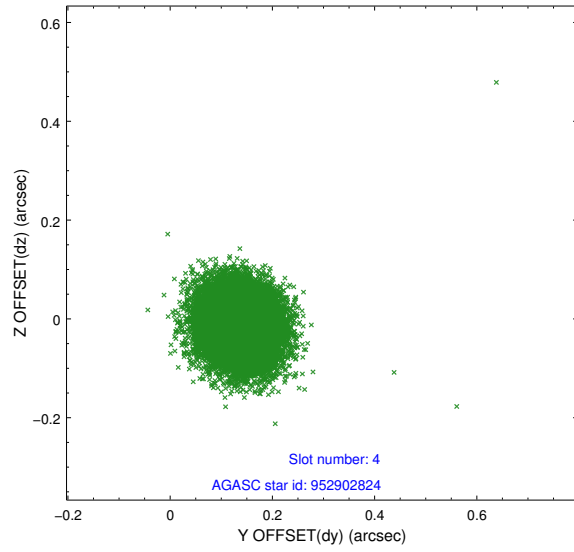
slot	status	id	mag	n_pts	med_dy	med_dz	dr1	dr2	ra	dec	mean_y	mean_z
0	FID	ACIS-S-1	7.18	8495	-0.009	-0.008	0.012	0.029	0.000000	0.000000	937.12	-1726.35
1	FID	ACIS-S-4	7.20	8495	0.048	0.012	0.010	0.019	0.000000	0.000000	2154.62	177.78
2	FID	ACIS-S-5	7.23	8494	-0.068	0.007	0.009	0.019	0.000000	0.000000	-1811.74	171.44
3	GUIDE	952900288	8.78	16986	-0.104	-0.016	0.074	0.118	206.330449	-32.324749	-1118.50	-2174.44
4	GUIDE	952902824	8.77	16986	0.138	-0.011	0.061	0.099	206.628429	-32.736097	-99.23	-770.11
5	GUIDE	952903936	9.87	16665	0.251	0.055	0.116	0.186	206.251681	-33.209517	1912.03	-1163.88
6	GUIDE	954605440	7.07	16991	-0.054	-0.108	0.057	0.091	207.497197	-32.665175	-1334.40	1567.89
7	GUIDE	952900464	9.62	16975	-0.229	0.074	0.121	0.194	206.724550	-32.098200	-2332.83	-1379.42

2.4 Star Slots

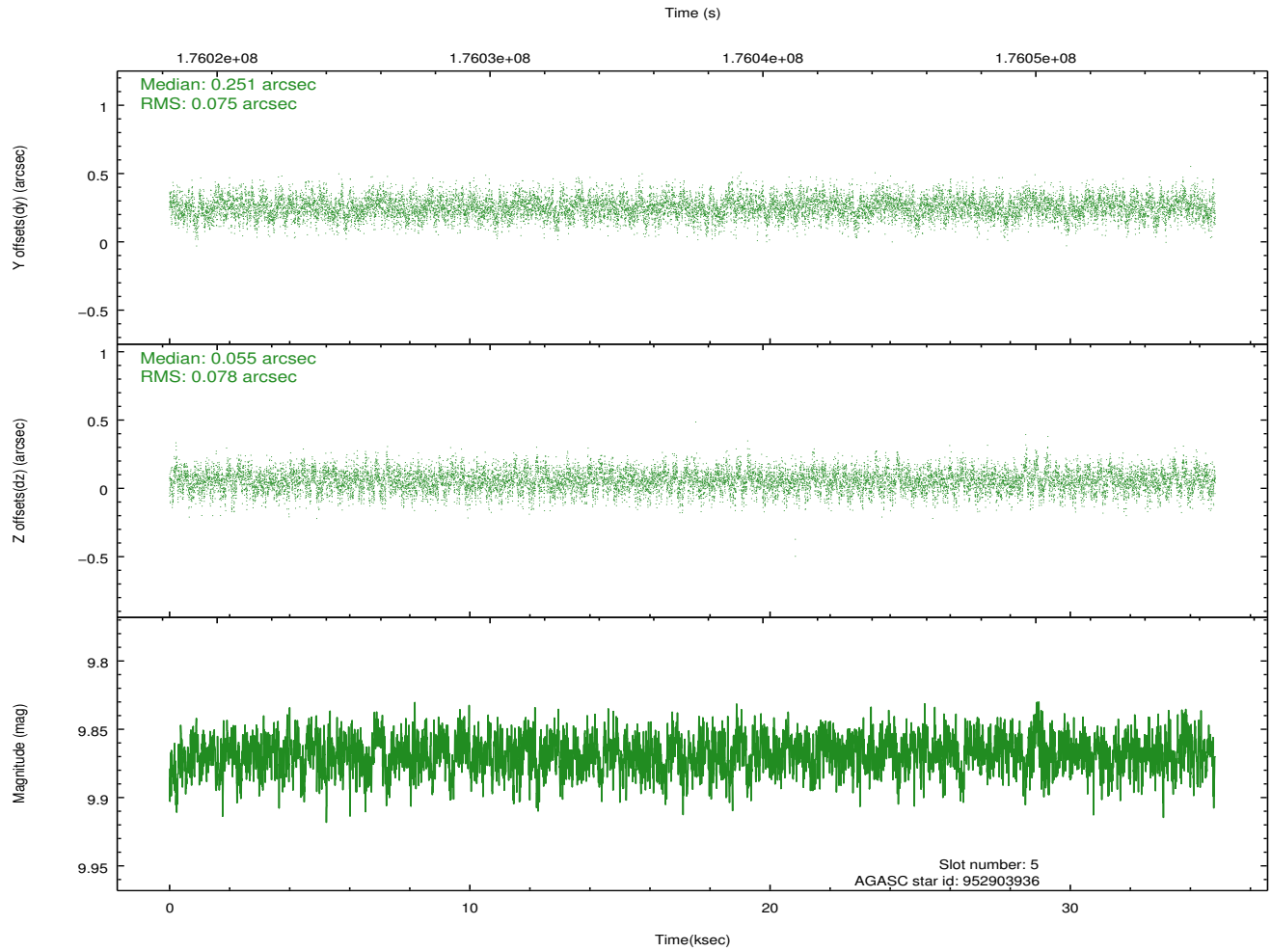
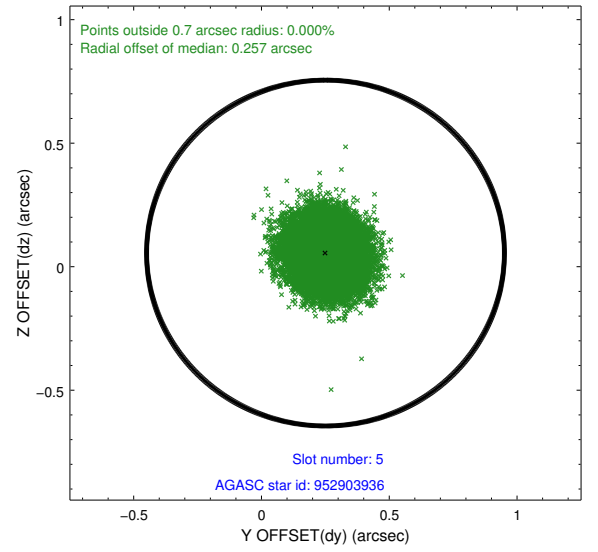
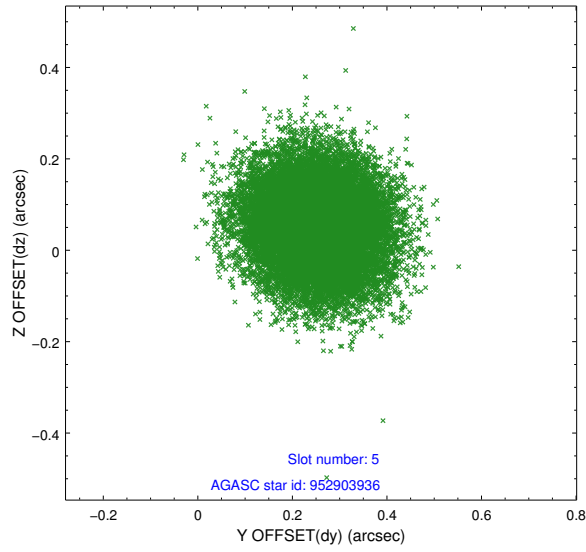
2.4.1 Slot 3



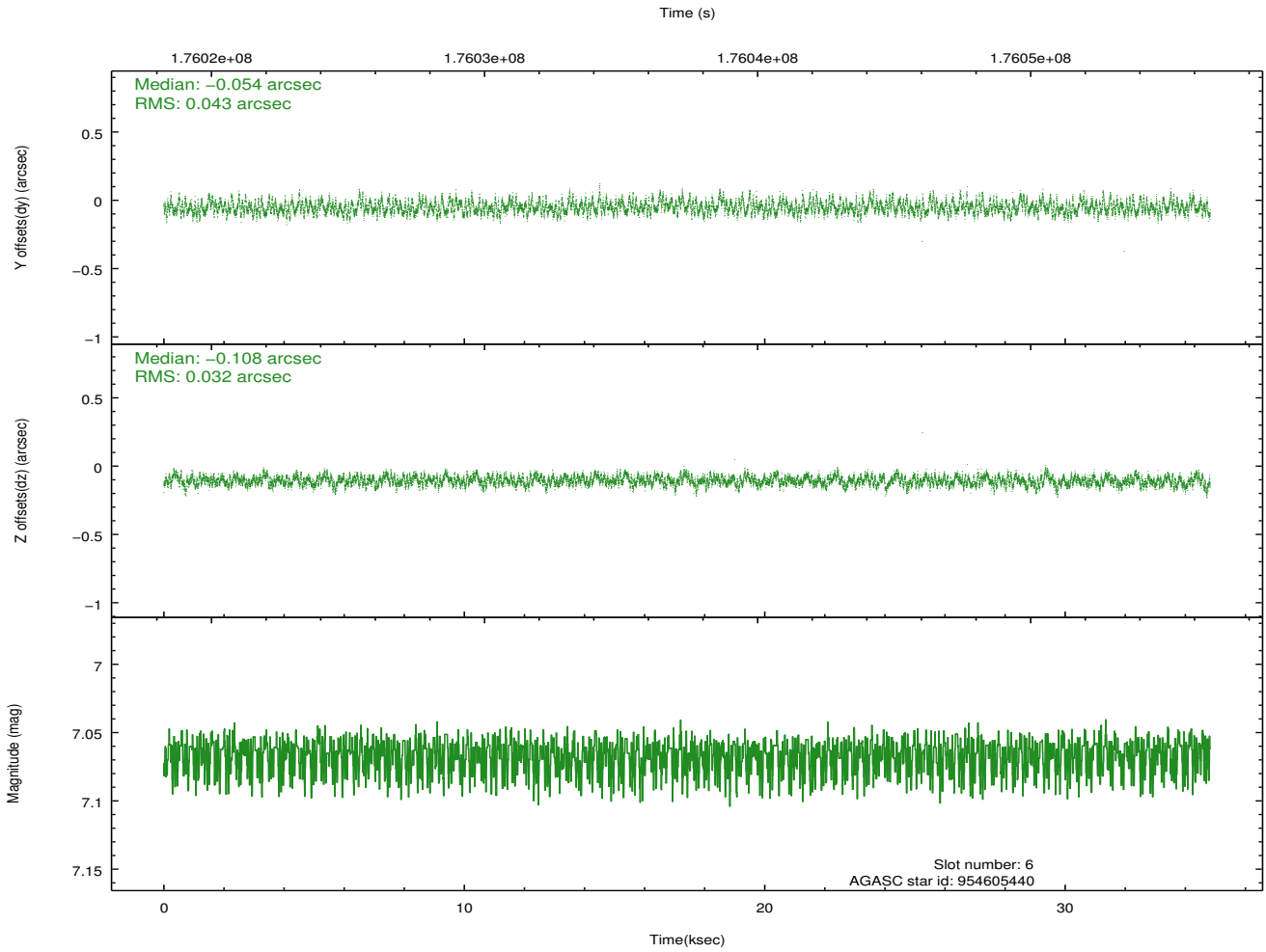
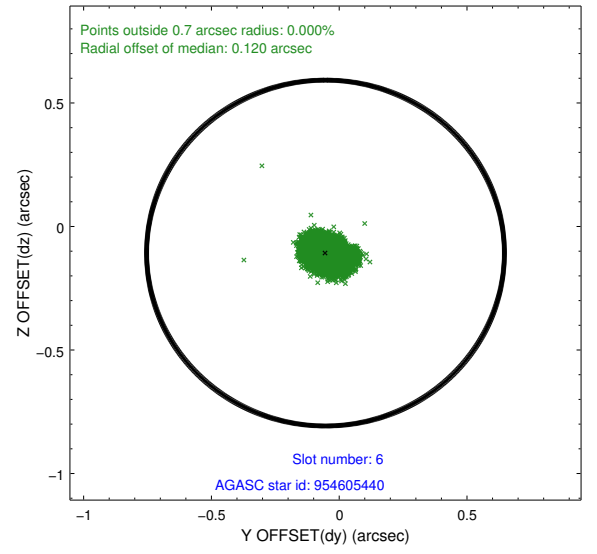
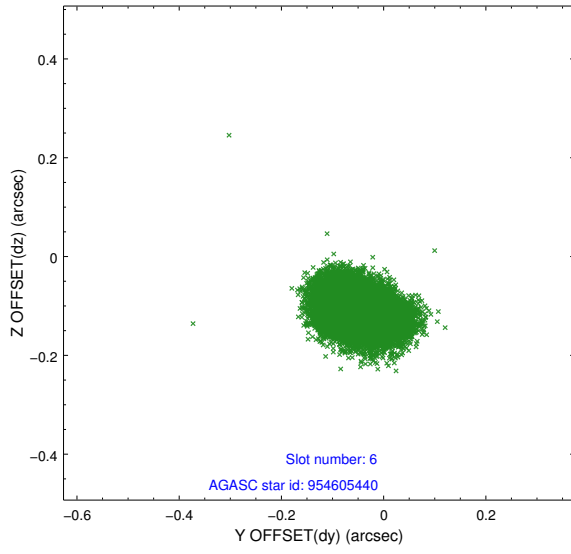
2.4.2 Slot 4



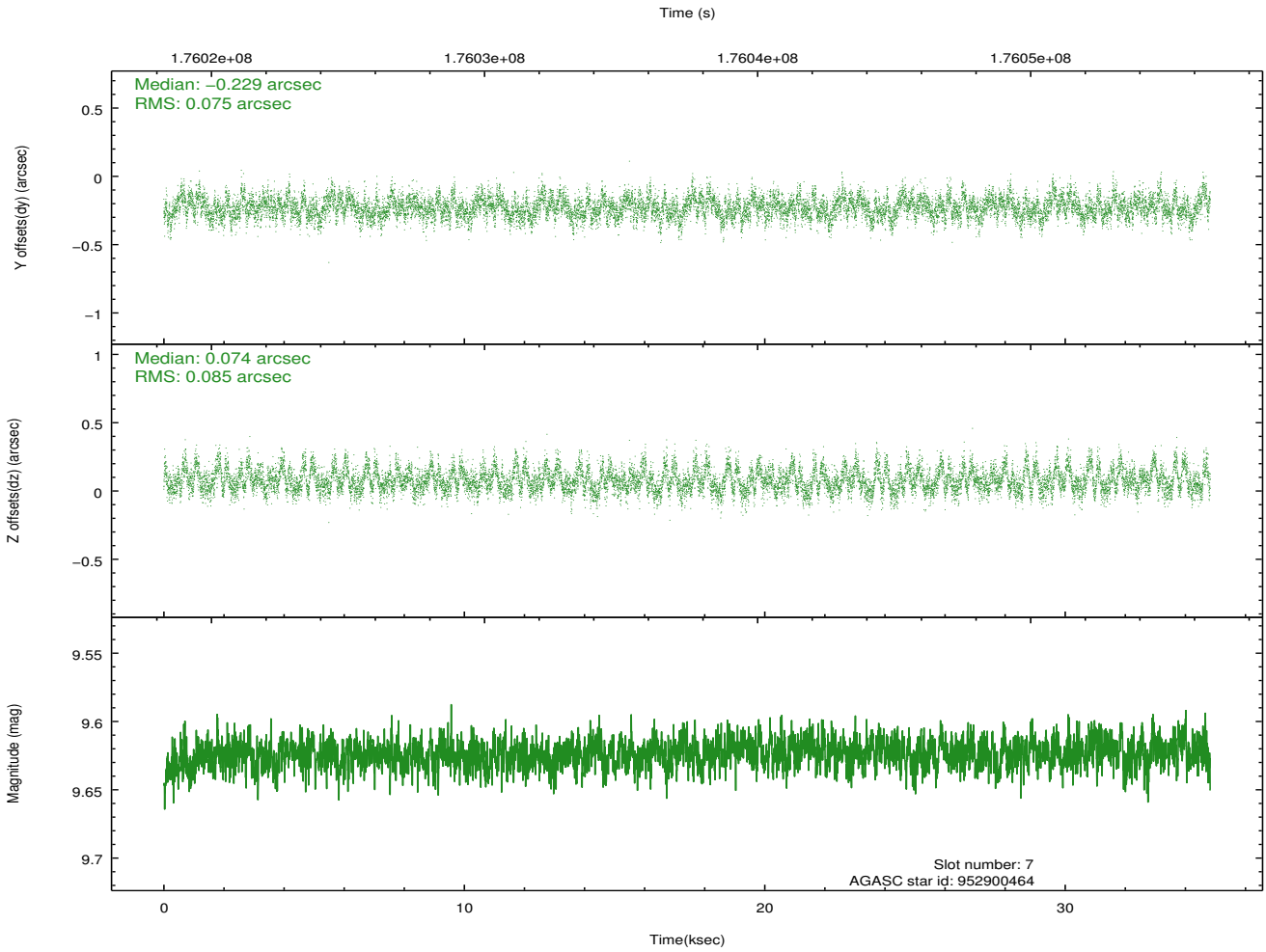
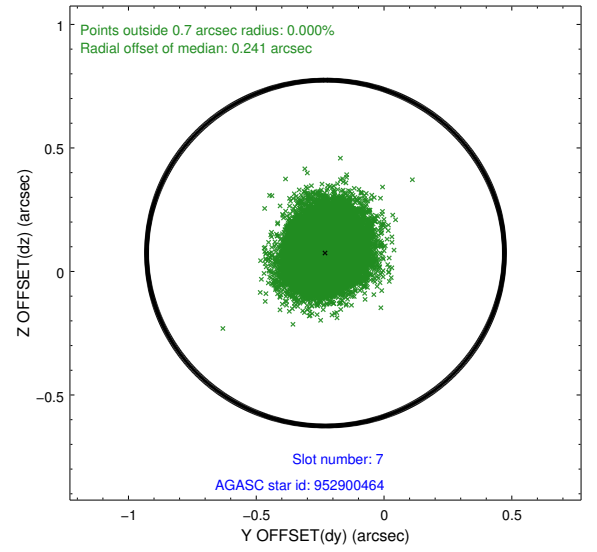
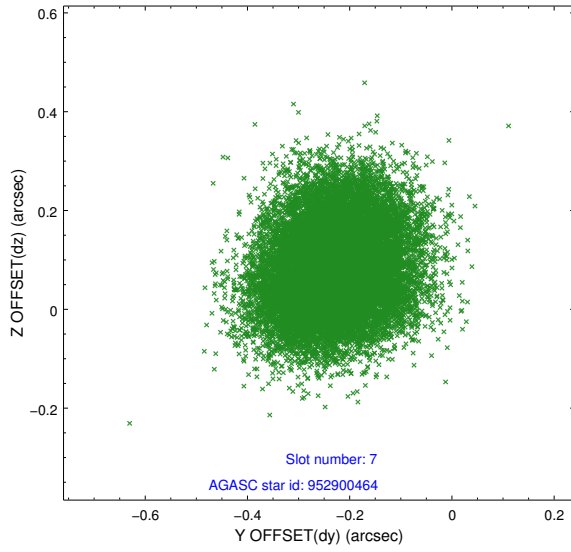
2.4.3 Slot 5



2.4.4 Slot 6

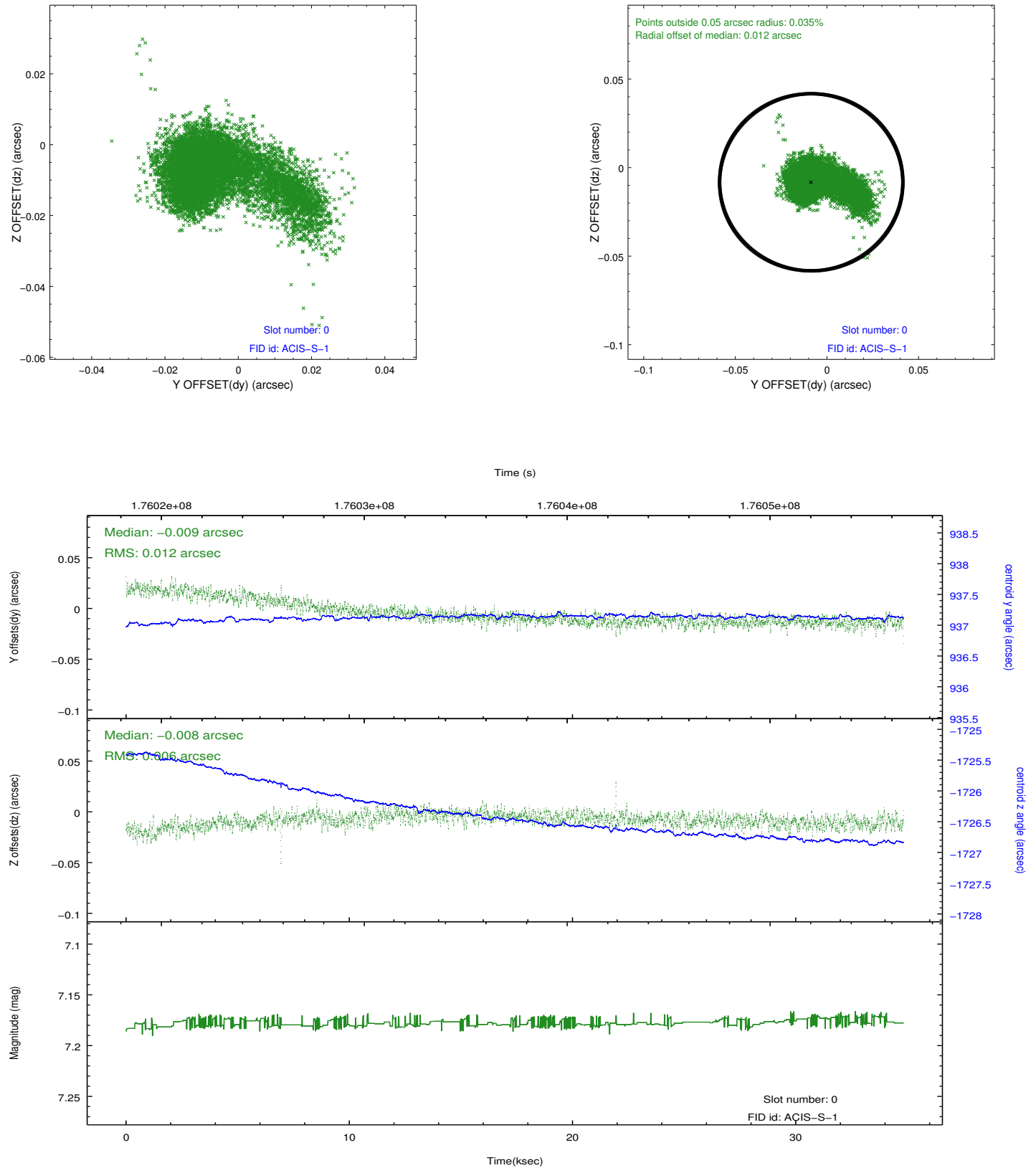


2.4.5 Slot 7

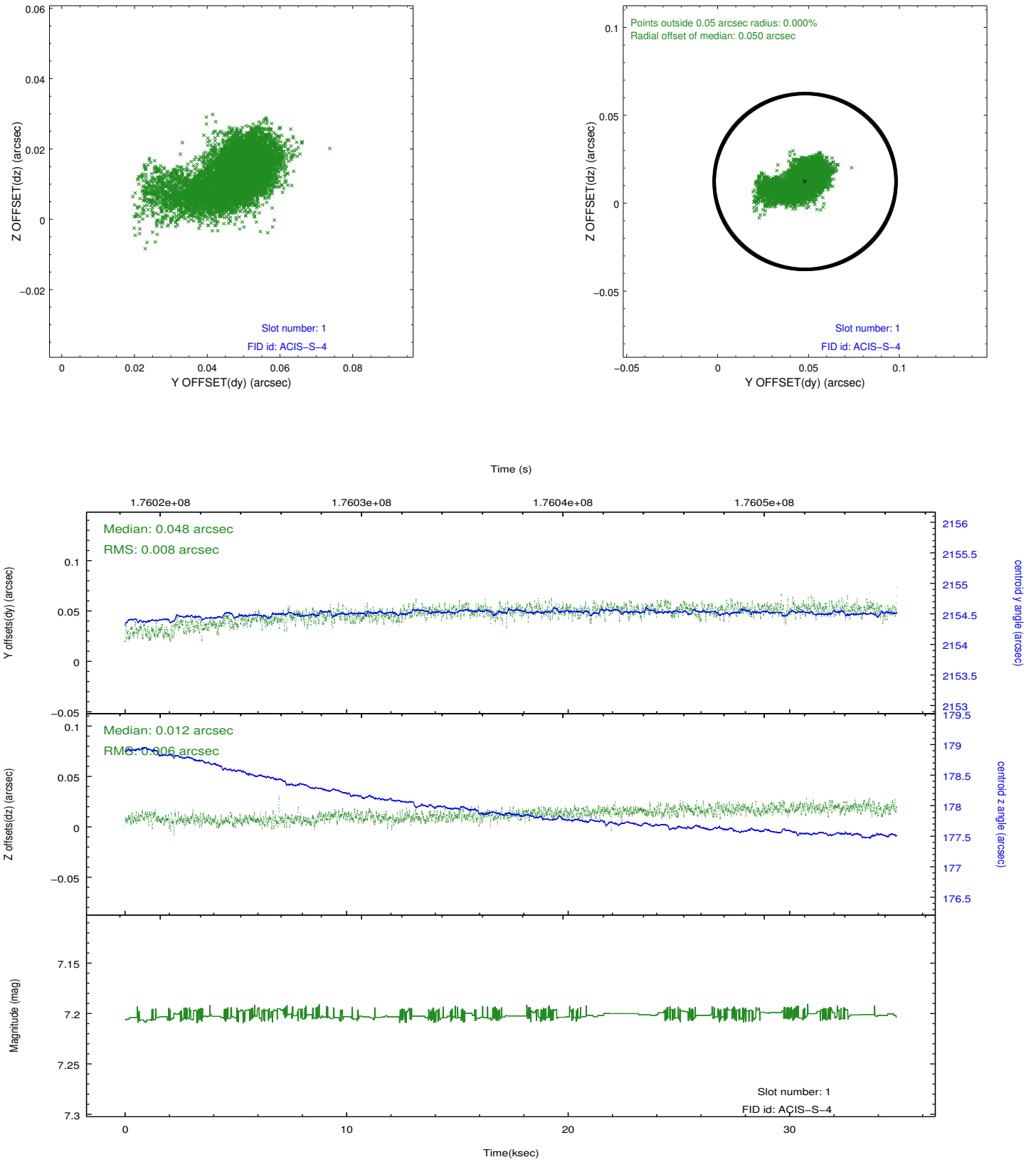


2.5 FID Slots

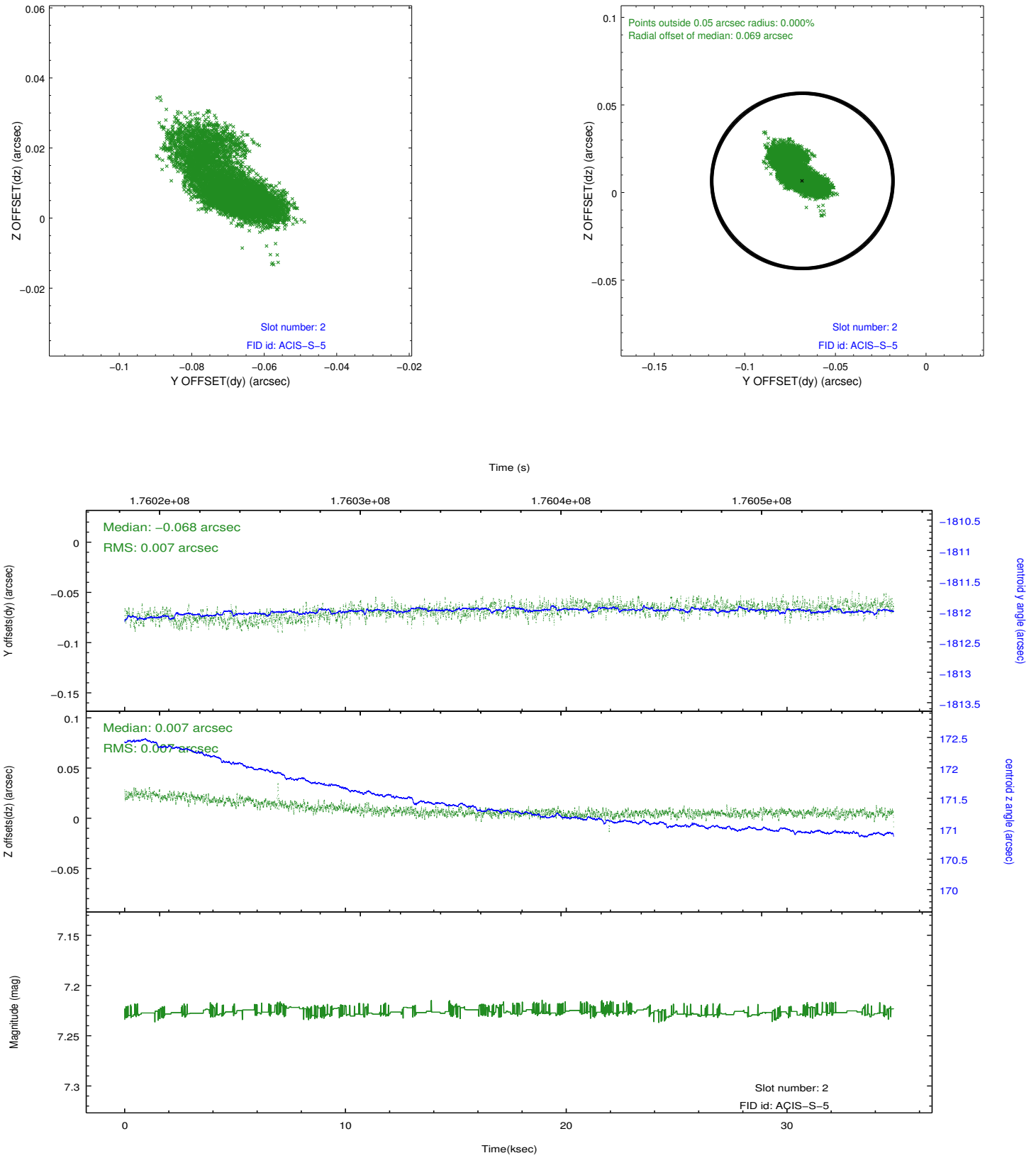
2.5.1 Slot 0



2.5.2 Slot 1



2.5.3 Slot 2



A Summary

A.1 Status

V&V Scientist	Beth Sundheim
V&V Date (YYYY-MM-DD)	2012.11.20
V&V Edition	1
V&V Disposition and Status	OK
V&V Charge Time	34.435

A.2 Comments