

V&V Reference Report

L2 ASCDS Version : 7.6.8

Observation 4192 - L2 Version 001
Chandra X-Ray Center

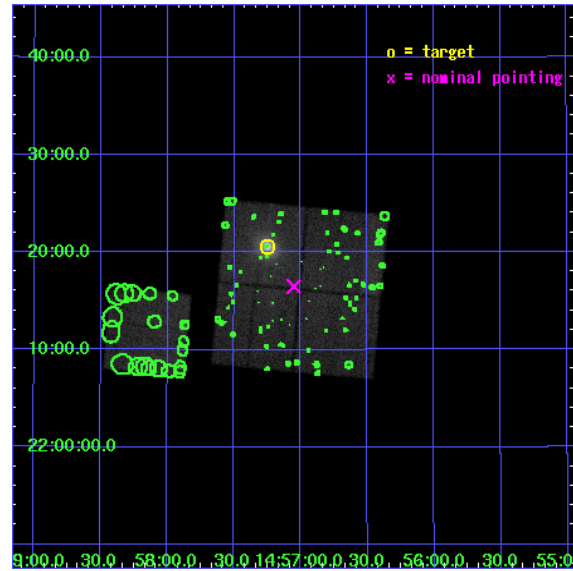
L2 Processing Date : Jul 6 2006

Contents

1	Front	2
2	OBI	3
2.1	OBI	3
2.1.1	Images	3
2.1.2	Bias	3
2.1.3	Parameters	4
2.1.4	Events	4
2.2	Compared Parameters	5
2.3	Aspect	6
2.4	Star Slots	9
2.4.1	Slot 3	9
2.4.2	Slot 4	10
2.4.3	Slot 6	11
2.5	FID Slots	12
2.5.1	Slot 0	12
2.5.2	Slot 1	13
2.5.3	Slot 2	14
3	Point Sources	15
A	Summary	16
A.1	Status	16
A.2	Comments	16

1 Front

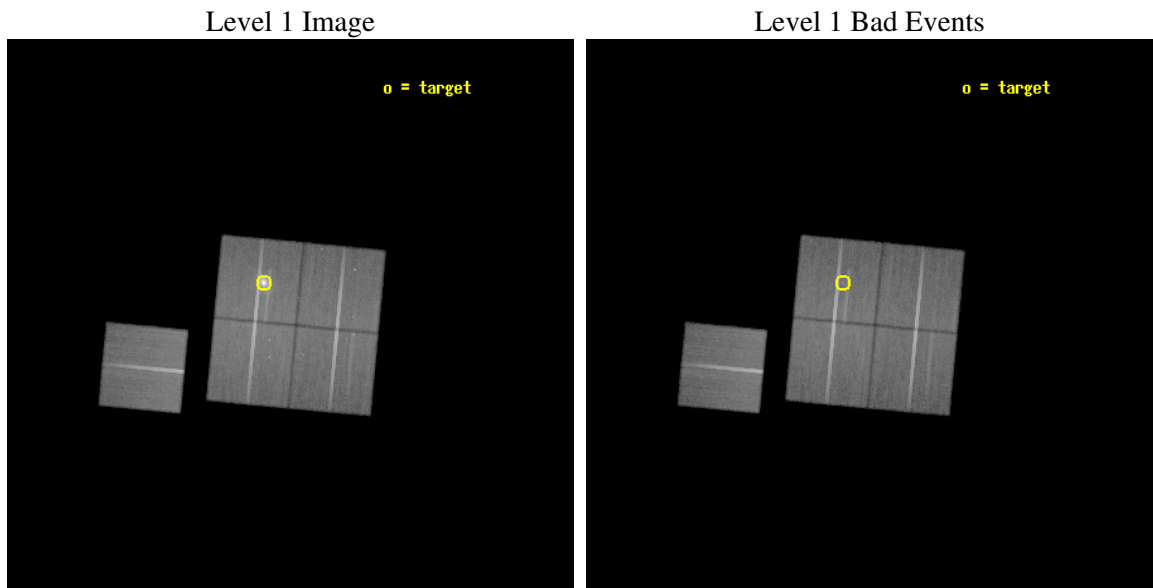
seq_num	800348
obs_id	4192
title	STUDY OF A COLD FRONT IN A MASSIVE COOLING FLOW CLUSTER OF GALAXIES WITH STRONG LENSING
observer	Dr Pasquale Mazzotta
object	MS1455.0+2232
dtcycle	0
cycle	P
ra_targ	224.3125
dec_targ	22.341944
ra_nom	224.26285094509
dec_nom	22.274923376034
roll_nom	275.39589293581
revision	4
ontime	93098.954009593
livetime	91882.547637004
ontime0	93117.79982096
ontime1	93105.235989928
ontime2	93114.6588507
ontime3	93098.954009593
ontime6	93111.517870605
l2events	281581



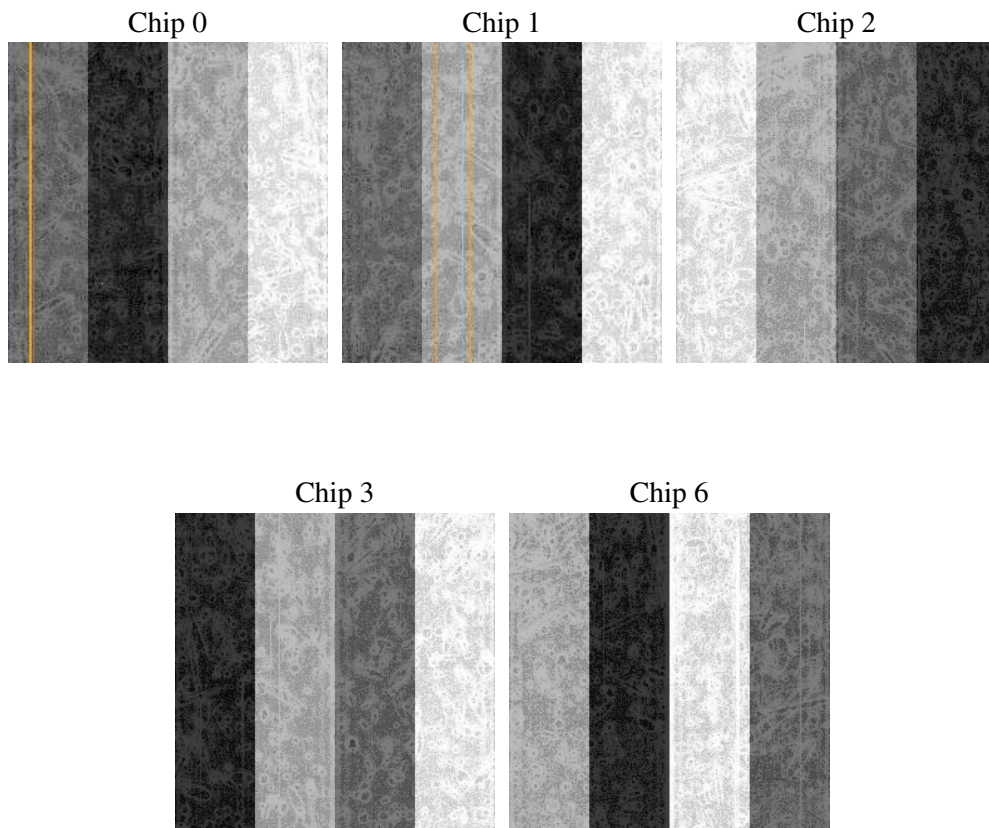
2 OBI

2.1 OBI

2.1.1 Images



2.1.2 Bias



2.1.3 Parameters

obi_num	0
ascdsver	7.6.8
caldsver	3.2.2
date	2006-07-06T19:40:53
revision	4

sched_exp_time	93000.000000
ontime	93102.411838472
ontime0	93121.257679731
ontime1	93108.693818808
ontime2	93118.116679579
ontime3	93102.411838472
ontime6	93114.975729376
l1events	2467898

2.1.4 Events

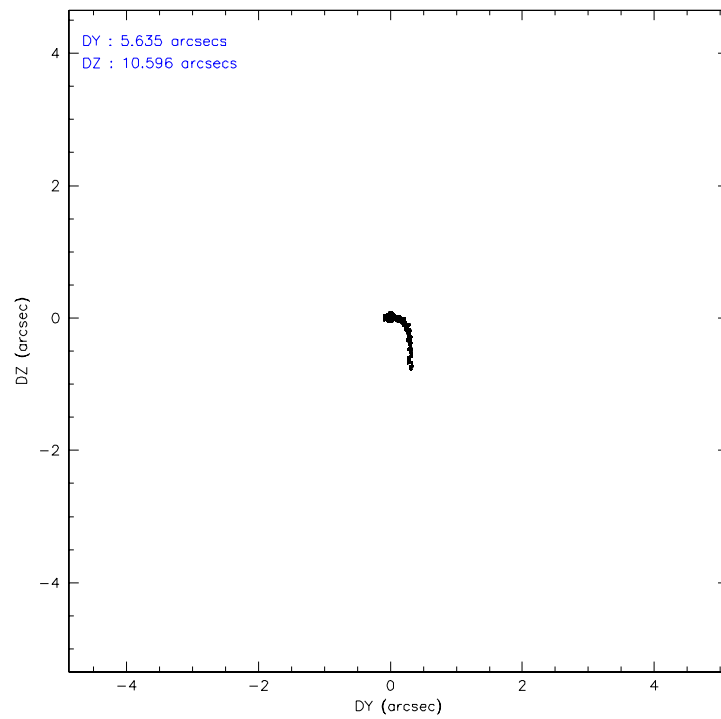
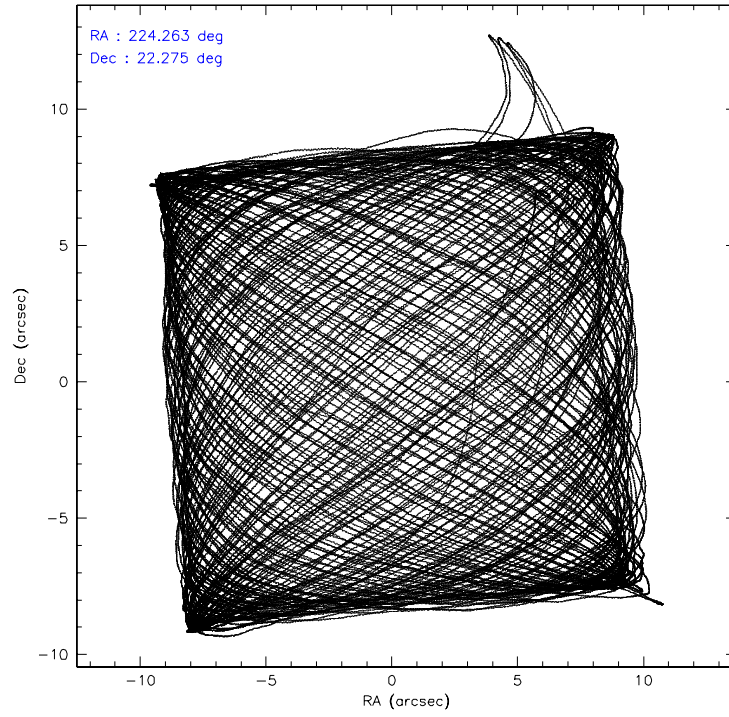
	ccd 0	ccd 1	ccd 2	ccd 3	ccd 6
level 1 events	450283	456116	510882	560384	490233
rejected events	400399	399475	460597	443076	439538
rejected %	88%	87%	90%	79%	89%

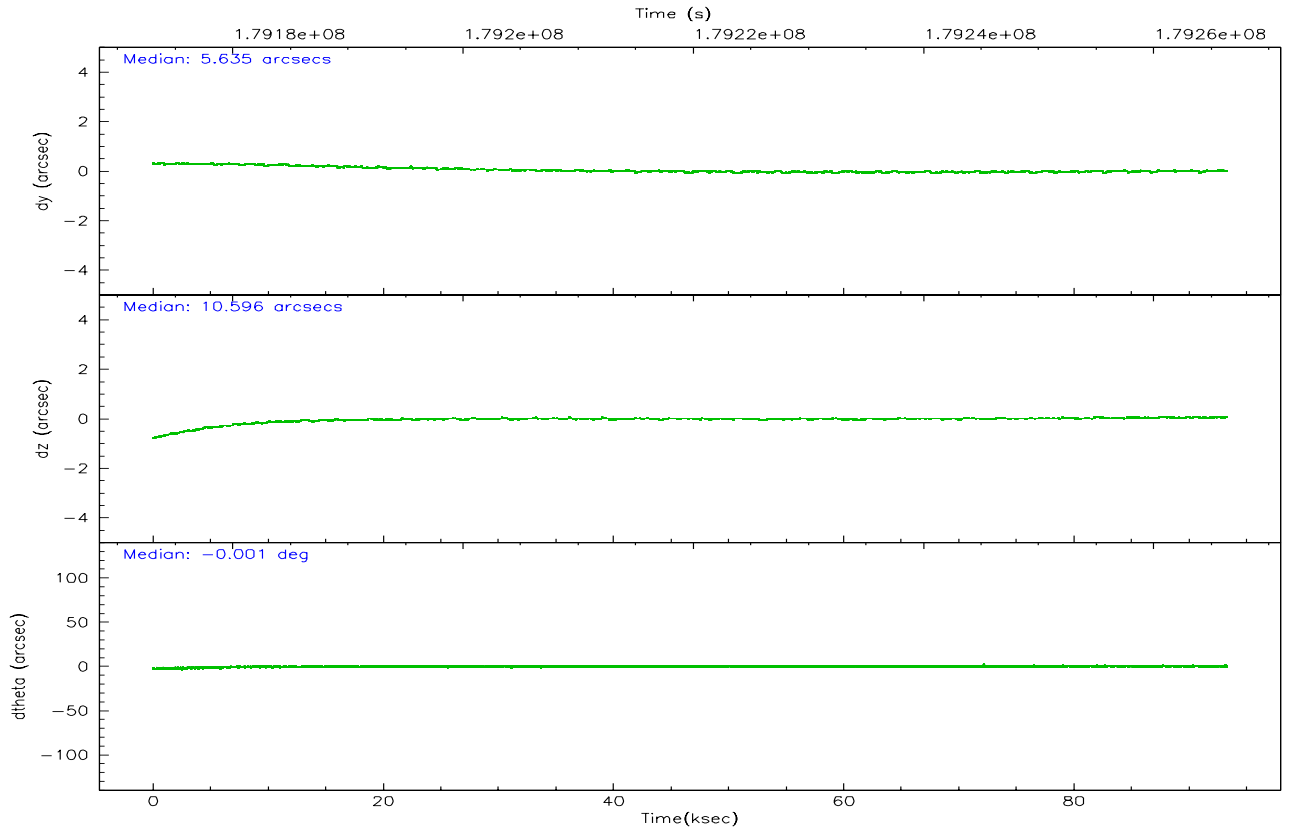
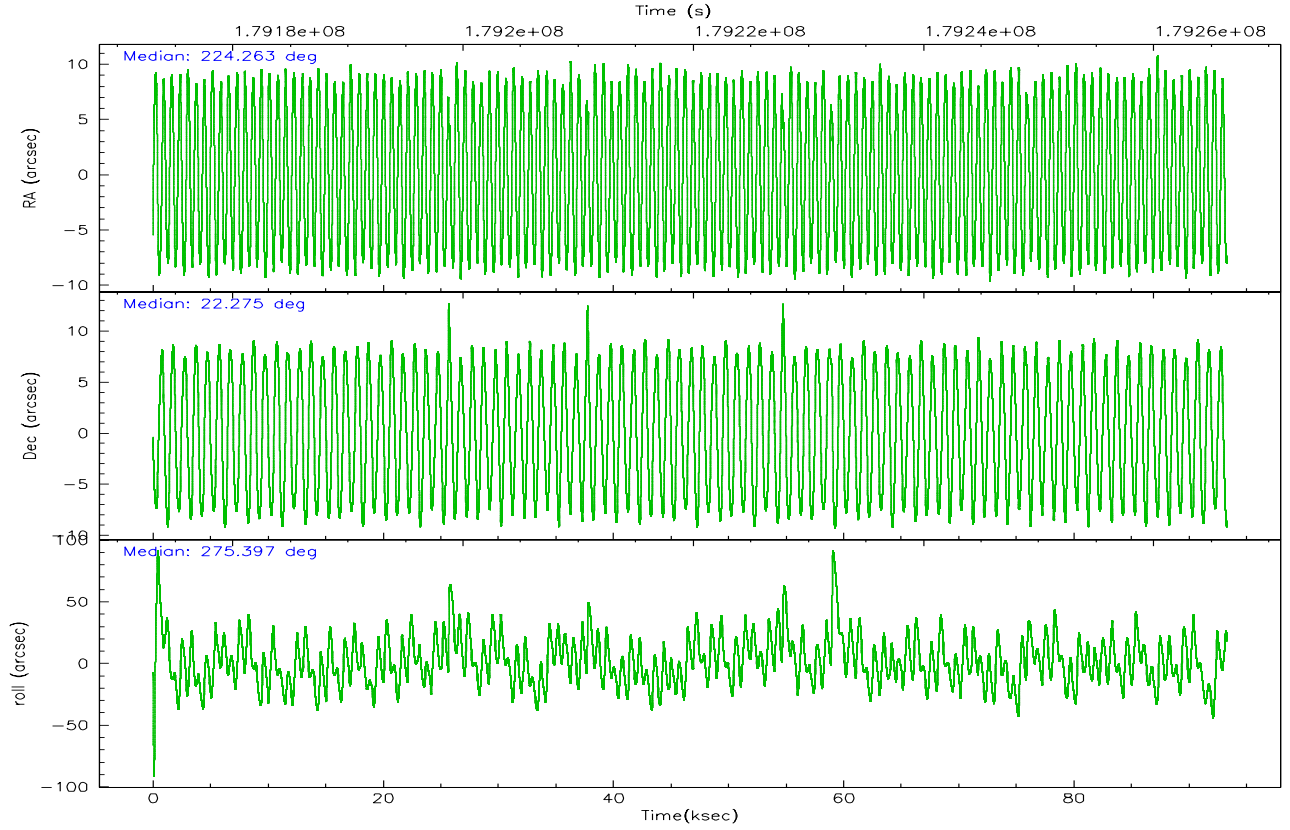
	ccd 0	ccd 1	ccd 2	ccd 3	ccd 6
grade 0 events	17970	22208	19778	75760	18318
	3%	4%	3%	13%	3%
grade 1 events	236	229	232	570	224
	0%	0%	0%	0%	0%
grade 2 events	11457	11606	11114	16158	10538
	2%	2%	2%	2%	2%
grade 3 events	5907	6082	5375	7479	5676
	1%	1%	1%	1%	1%
grade 4 events	5212	6040	5335	7413	5631
	1%	1%	1%	1%	1%
grade 5 events	17007	17920	16392	19243	18881
	3%	3%	3%	3%	3%
grade 6 events	9338	10706	8687	10504	10535
	2%	2%	1%	1%	2%
grade 7 events	383156	381325	443969	423257	420430
	85%	83%	86%	75%	85%

2.2 Compared Parameters

Parameter	Planned	Actual	Parameter	Planned	Actual
Instrument	ACIS	ACIS	Obspar format version number	6	6
Detector	ACIS-01236	ACIS-01236	Obspar file type	PREDICTED	ACTUAL
Grating	NONE	NONE	Obspar update status	NONE	UPDATED
Data mode	VFAINT	VFAINT	On-chip summing requested	N	N
Observation mode	POINTING	POINTING	Subarray requested	NONE	NONE
Pointing RA	224.245615	224.2628509450913	Alternating exposures requested	N	N
Pointing Dec	22.297172	22.27492337603426	Primary exposure time	0.000000	3.1
Pointing Roll	275.193731	275.3958929358123			
SIM focus pos (mm)	-0.782348	-0.7809083437167272			
SIM defocus (mm)	0	0.001439871863259334			
SIM translation stage pos (mm)	-233.592463	-233.5874344608287			
SIM translation stage offset (mm)	0	-0.005018542100998502			
Observation start time	179173392.184000	179172362.16058			
Observation start date	2003-09-05T18:22:08	2003-09-05T18:06:02			
Observation end time	179266392.184000	179267630.27716			
Observation end date	2003-09-06T20:12:08	2003-09-06T20:33:50			
Read mode	TIMED	TIMED			

2.3 Aspect



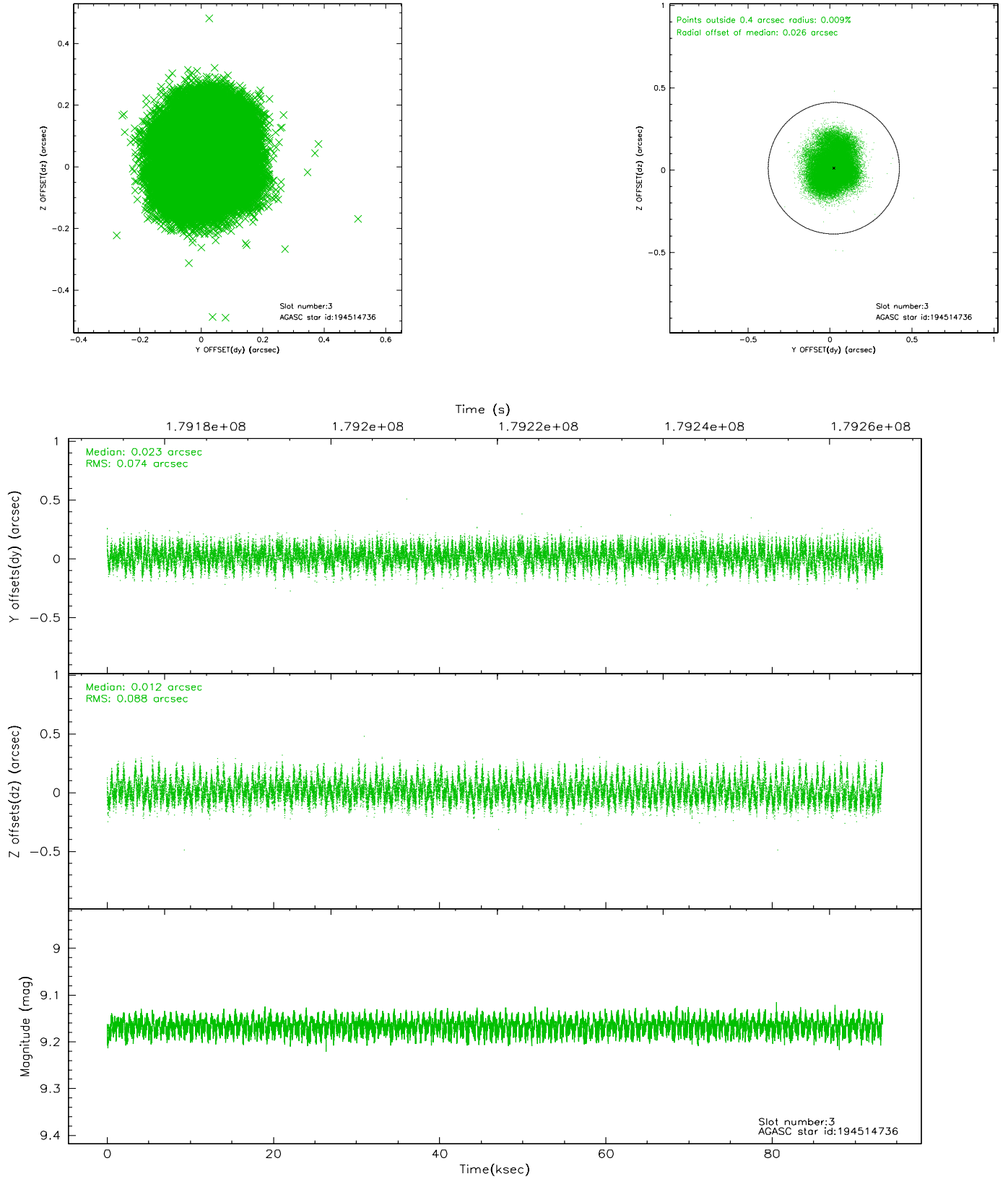


Slot Statistics

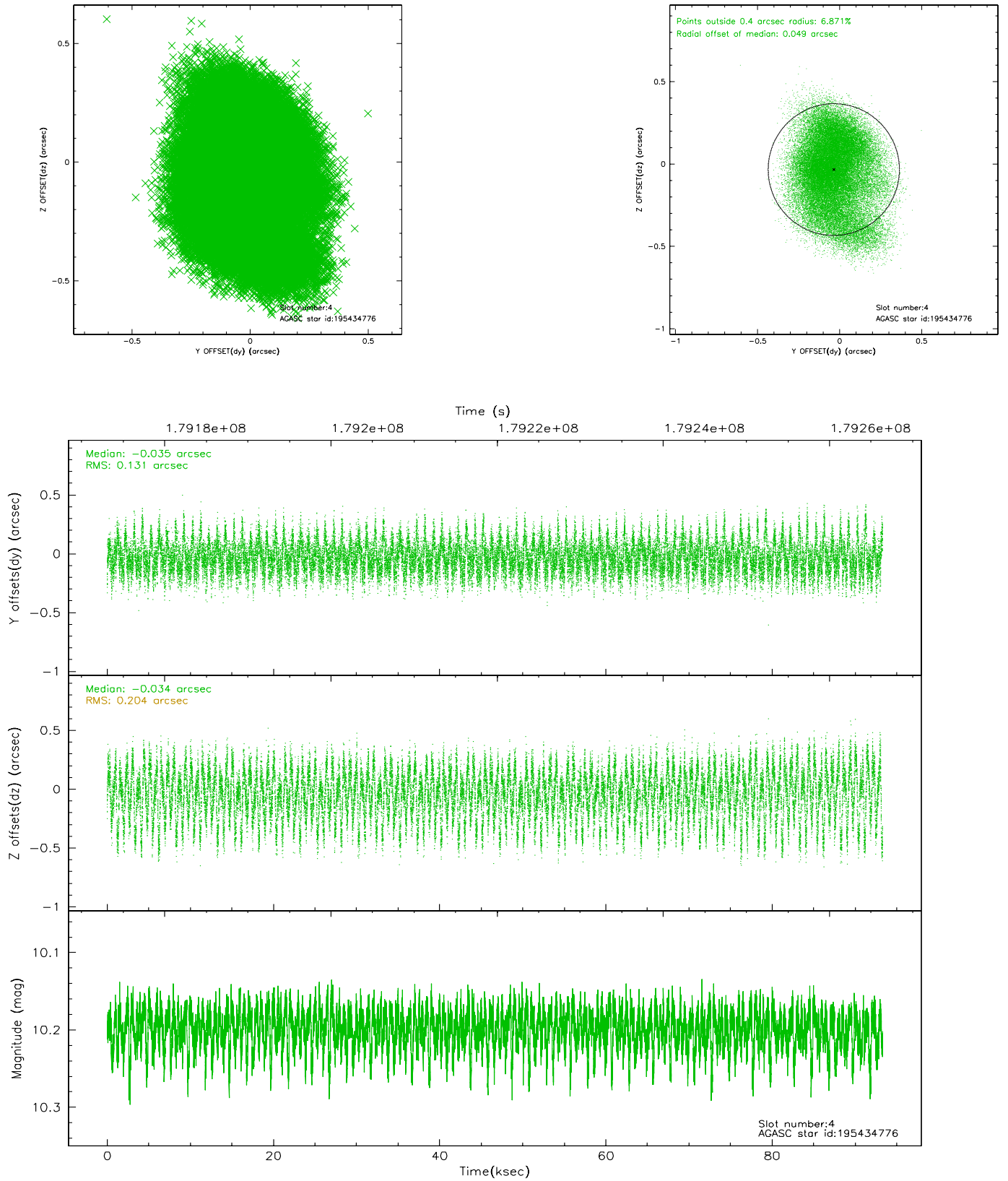
slot	status	id	mag	n_pts	med_dy	med_dz	dr1	dr2	ra	dec	mean_y	mean_z
0	FID	ACIS-I-1	7.24	22761	0.000	0.026	0.007	0.016	0.000000	0.000000	934.02	-834.02
1	FID	ACIS-I-5	7.23	22759	-0.109	0.037	0.006	0.012	0.000000	0.000000	-1814.22	1063.54
2	FID	ACIS-I-6	7.25	22759	0.018	0.007	0.007	0.013	0.000000	0.000000	399.70	1707.90
3	GUIDE	194514736	9.17	45491	0.023	0.012	0.125	0.195	223.996360	22.211386	231.81	-854.44
4	GUIDE	195434776	10.20	45483	-0.035	-0.034	0.258	0.423	224.894254	22.153508	706.48	2108.14
5	OMITTED		0.00	0	0.000	0.000	0.000	0.000	0.000000	0.000000	0.00	0.00
6	GUIDE	264380752	10.24	45402	0.010	0.036	0.191	0.311	224.720923	22.632014	-1059.78	1683.14
7	OMITTED		0.00	0	0.000	0.000	0.000	0.000	0.000000	0.000000	0.00	0.00

2.4 Star Slots

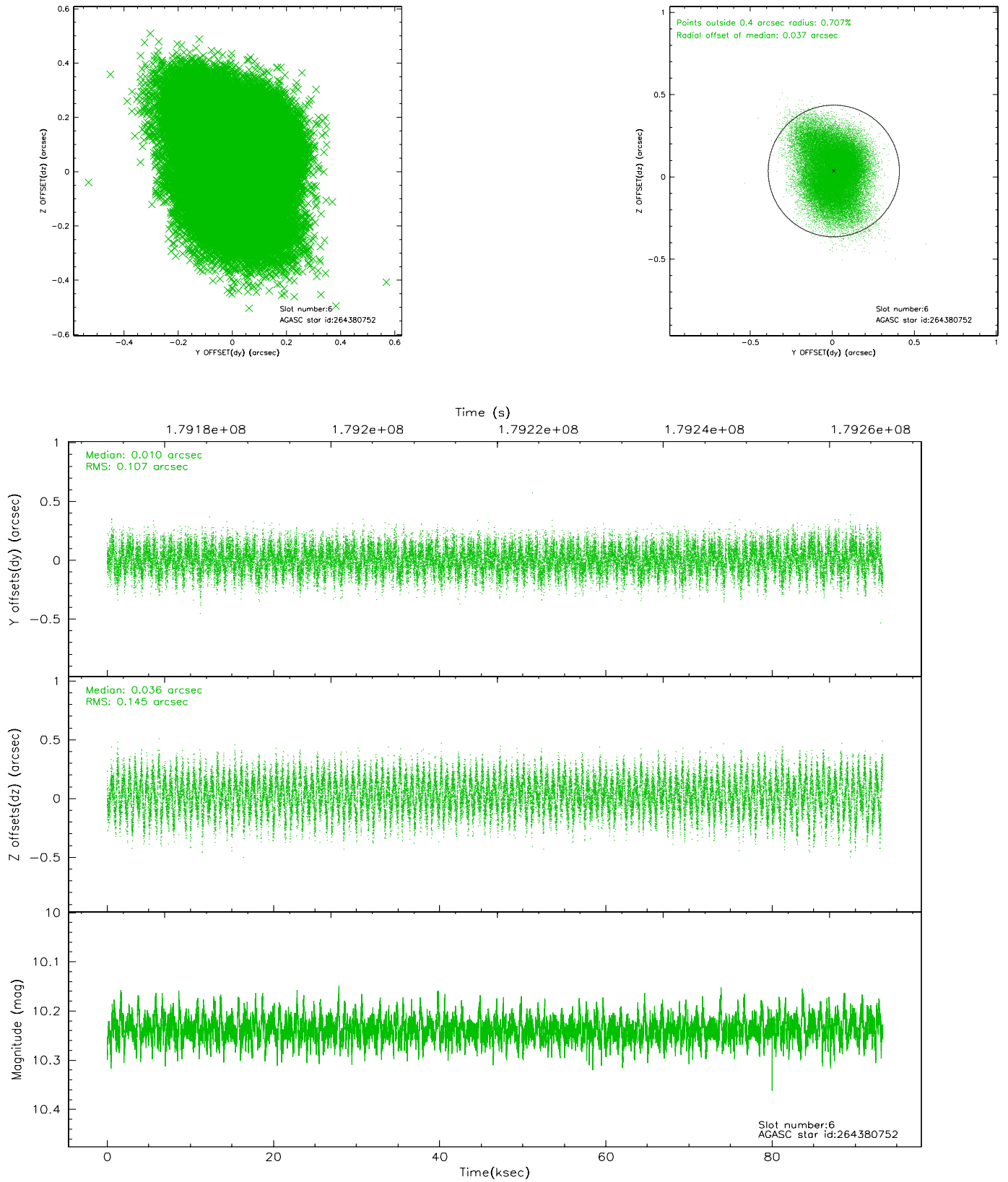
2.4.1 Slot 3



2.4.2 Slot 4

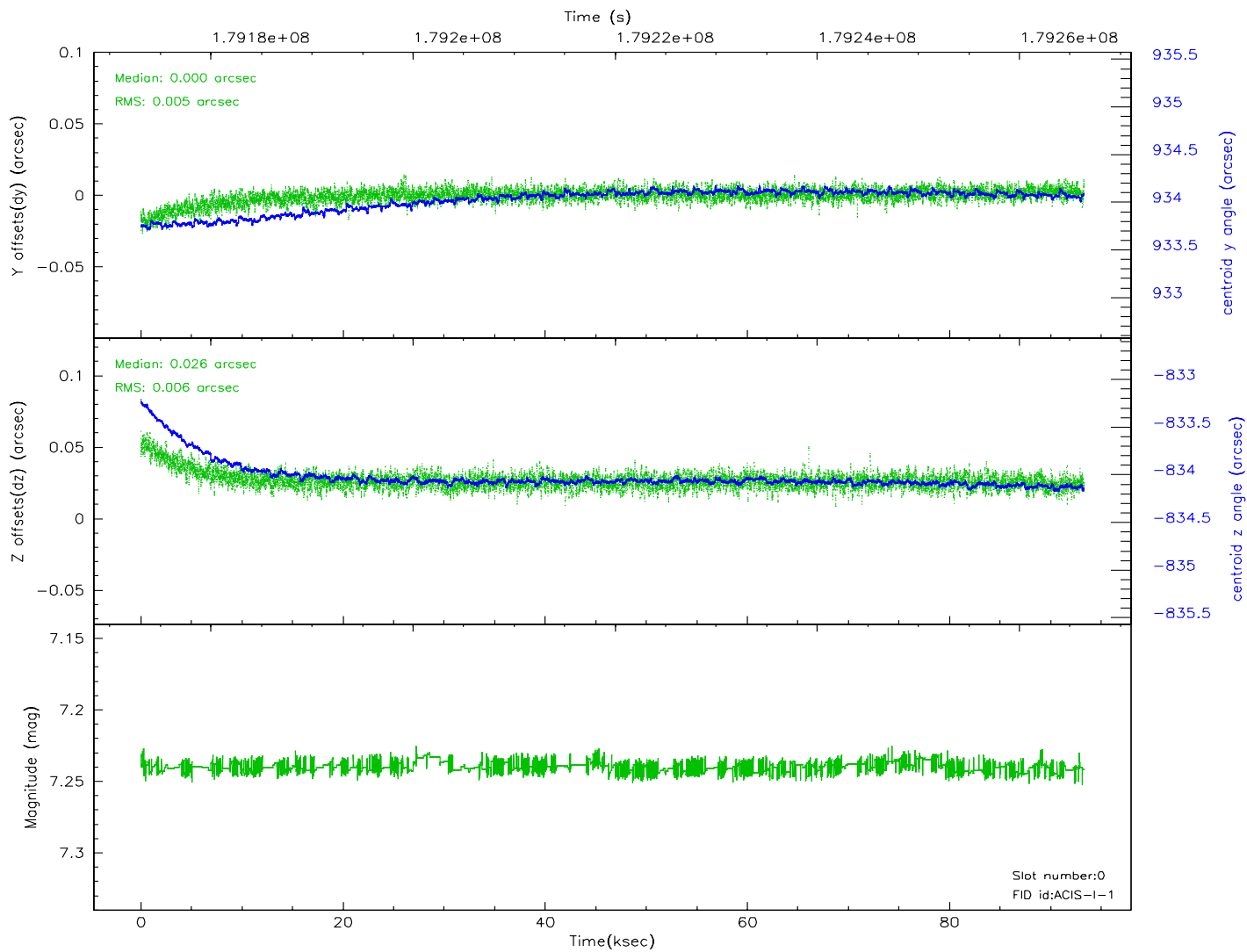
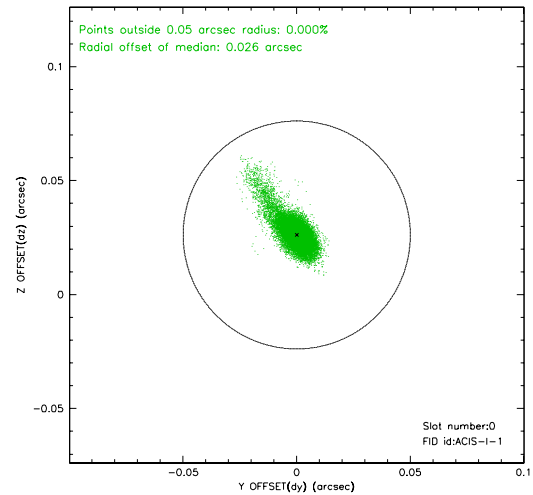
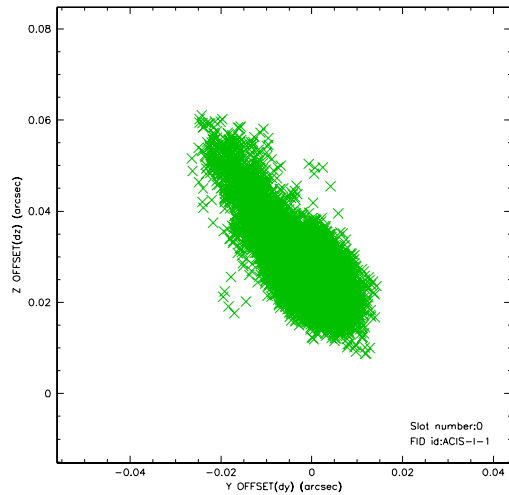


2.4.3 Slot 6

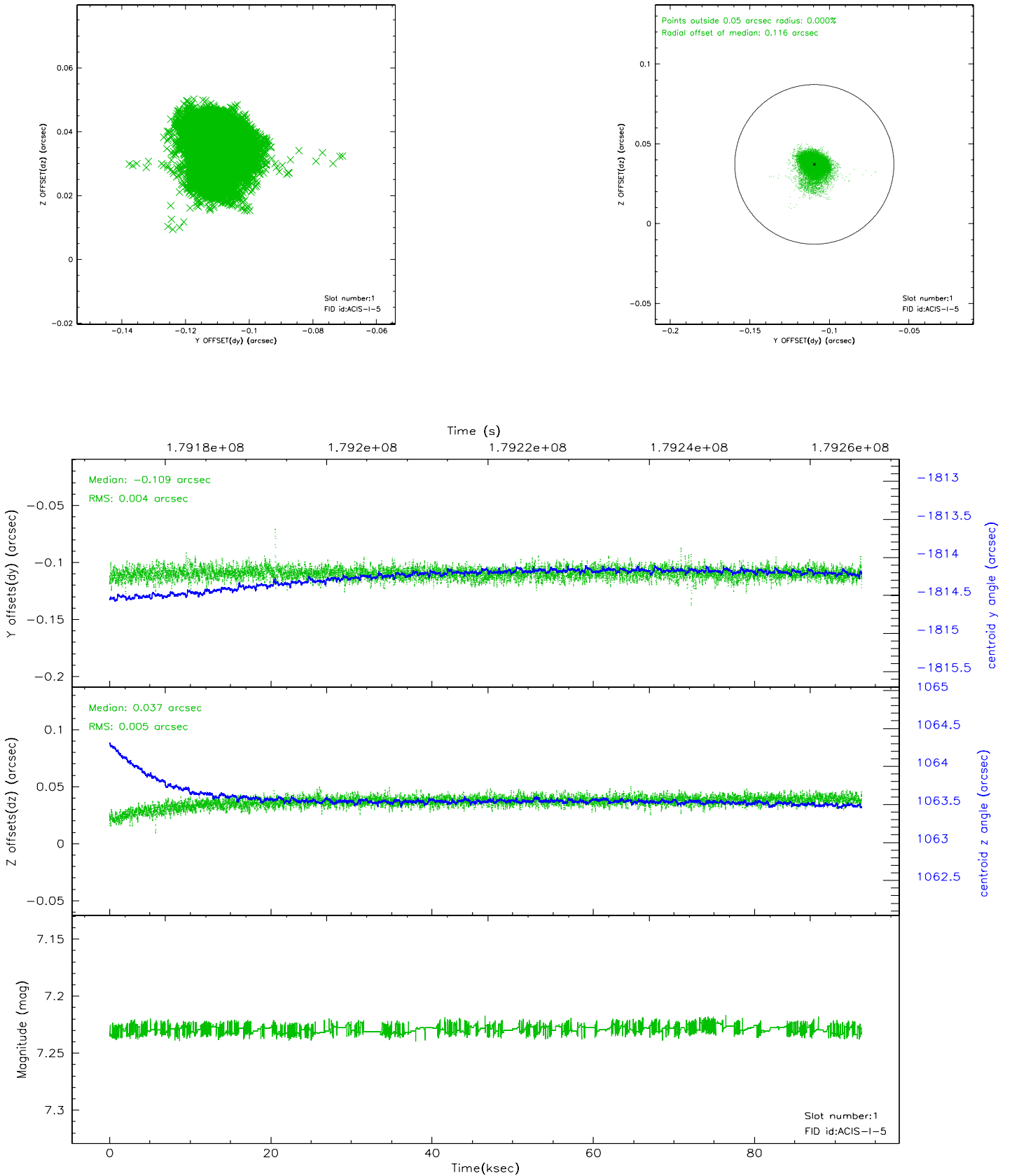


2.5 FID Slots

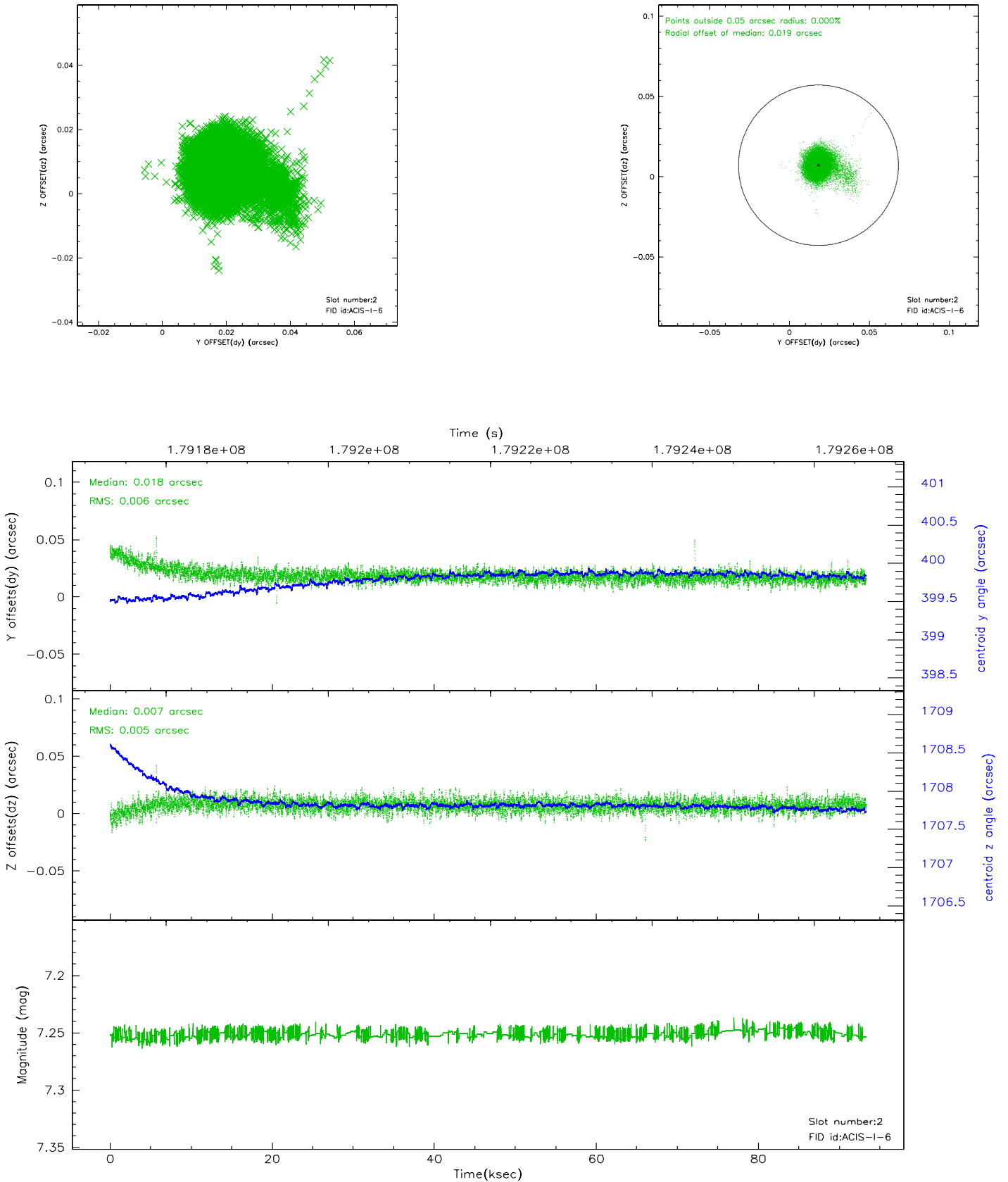
2.5.1 Slot 0



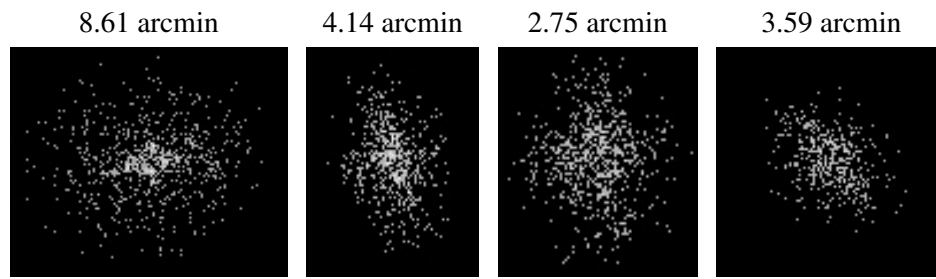
2.5.2 Slot 1



2.5.3 Slot 2



3 Point Sources



A Summary

A.1 Status

V&V Scientist	Beth Sundheim
V&V Date (YYYY-MM-DD)	2010.10.01
V&V Edition	2
V&V Disposition and Status	OK
V&V Charge Time	93.102

A.2 Comments

The guide stars in slots 5 and 7 were manually excluded from the processing due to poor data quality.

Focal plane temperature is warmer than -118.7 C degrees during the first ~5 ksec of this observation. The ACIS spectral response calibration for the front-illuminated chips is less accurate at these warmer temperatures than it is at -119.7 C. The back-illuminated chips are not affected at the focal plane temperatures recorded for this observation. Users whose science objectives depend on the most accurate spectral response (i.e.: fitting line-rich spectra) may notice an effect. Users whose science objectives do not depend on the most accurate spectral response should not notice an effect.