

V&V Reference Report

L2 ASCDS Version : 8.4.5

Observation 4185 - L2 Version 3
Chandra X-Ray Center

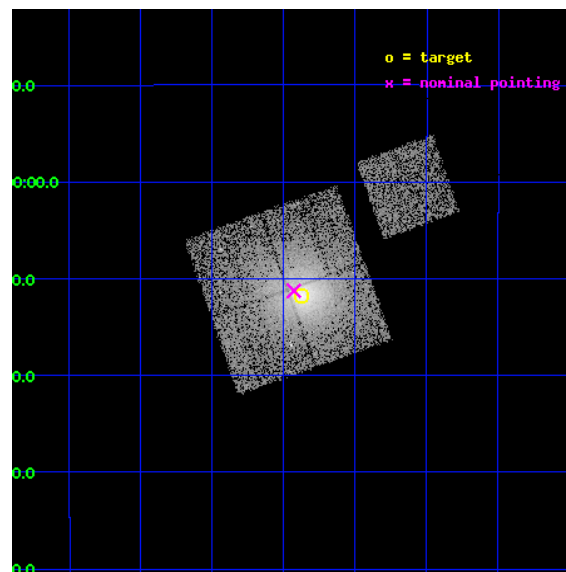
L2 Processing Date : Oct 24 2012

Contents

| | | |
|----------|-------------------------------|-----------|
| 1 | Front | 2 |
| 2 | OBI | 3 |
| 2.1 | OBI | 3 |
| 2.1.1 | Images | 3 |
| 2.1.2 | Bias | 3 |
| 2.1.3 | Parameters | 4 |
| 2.1.4 | Events | 4 |
| 2.2 | Compared Parameters | 5 |
| 2.3 | Aspect | 6 |
| 2.4 | Star Slots | 9 |
| 2.4.1 | Slot 3 | 9 |
| 2.4.2 | Slot 4 | 10 |
| 2.4.3 | Slot 5 | 11 |
| 2.4.4 | Slot 6 | 12 |
| 2.4.5 | Slot 7 | 13 |
| 2.5 | FID Slots | 14 |
| 2.5.1 | Slot 0 | 14 |
| 2.5.2 | Slot 1 | 15 |
| 2.5.3 | Slot 2 | 16 |
| A | Summary | 17 |
| A.1 | Status | 17 |
| A.2 | Comments | 17 |

1 Front

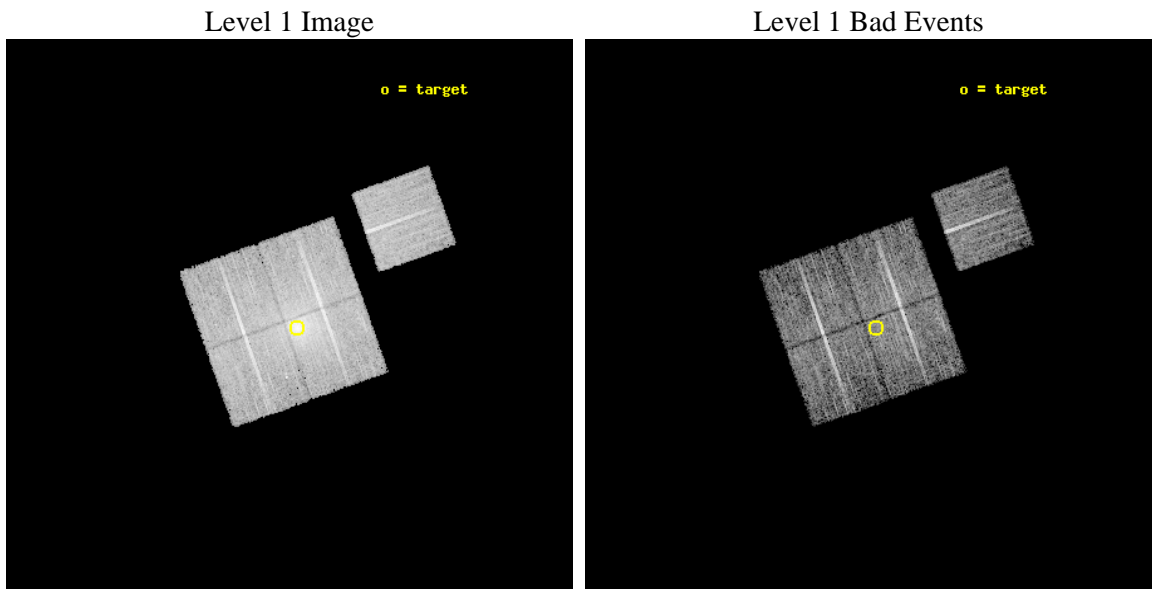
| | | |
|----------|--|---|
| seq_num | 800341 | Sequence number |
| obs_id | 4185 | Observation id |
| title | THE HIFLUGCS CLUSTER SURVEY: A CORNERSTONE FOR COSMOLOGY | Proposal |
| observer | Dr. CRAIG SARAZIN | Principal investigator |
| object | A1651 | Source name |
| dtcycle | 0 | |
| cycle | P | events from which exps? Prim/Second/Both |
| ra_targ | 194.843542 | Observer's specified target RA [deg] |
| dec_targ | -4.196111 | Observer's specified target Dec [deg] |
| ra_nom | 194.85739050525 | Nominal RA [deg] |
| dec_nom | -4.1876673978629 | Nominal Dec [deg] |
| roll_nom | 70.440920842913 | Nominal Roll [deg] |
| revision | 3 | Processing version of data |
| ontime | 9771.1999811828 | Sum of GTIs [s] |
| livetime | 9643.5320599759 | Livetime [s] |
| ontime0 | 9771.1999811828 | Sum of GTIs [s] |
| ontime1 | 9771.1999811828 | Sum of GTIs [s] |
| ontime2 | 9771.1999811828 | Sum of GTIs [s] |
| ontime3 | 9771.1999811828 | Sum of GTIs [s] |
| ontime6 | 9771.1999811828 | Sum of GTIs [s] |
| l2events | 57442 | Number of level 2 events |



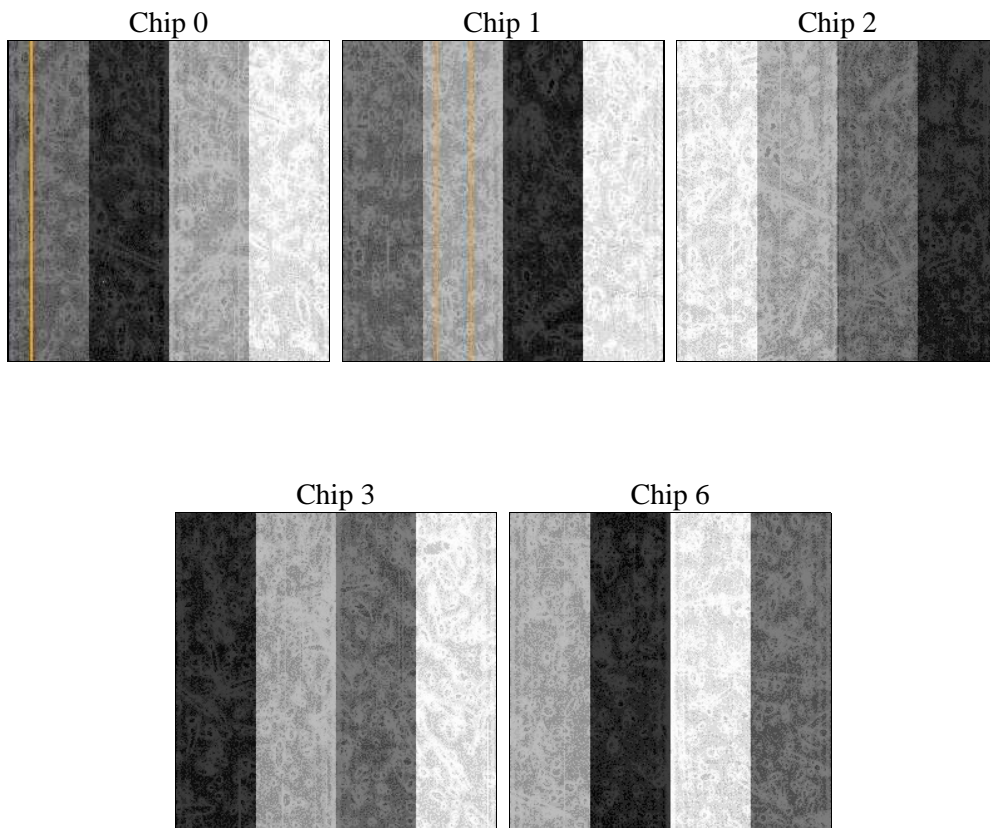
2 OBI

2.1 OBI

2.1.1 Images



2.1.2 Bias



2.1.3 Parameters

| | | | | | |
|----------|---------------------|--------------------------------|----------------|-----------------|---|
| obi_num | 1 | Obi number | sched_exp_time | 10000.000000 | [s] Scheduled observation exposure time |
| ascdsver | 8.4.5 | Processing system revision | ontime | 9771.1999811828 | Sum of GTIs [s] |
| caldsver | 4.5.2 | | ontime0 | 9771.1999811828 | Sum of GTIs [s] |
| date | 2012-10-24T13:03:23 | Date and time of file creation | ontime1 | 9771.1999811828 | Sum of GTIs [s] |
| revision | 3 | Processing version of data | ontime2 | 9771.1999811828 | Sum of GTIs [s] |
| | | | ontime3 | 9771.1999811828 | Sum of GTIs [s] |
| | | | ontime6 | 9771.1999811828 | Sum of GTIs [s] |
| | | | l1events | 305574 | Number of level 1 events |

2.1.4 Events

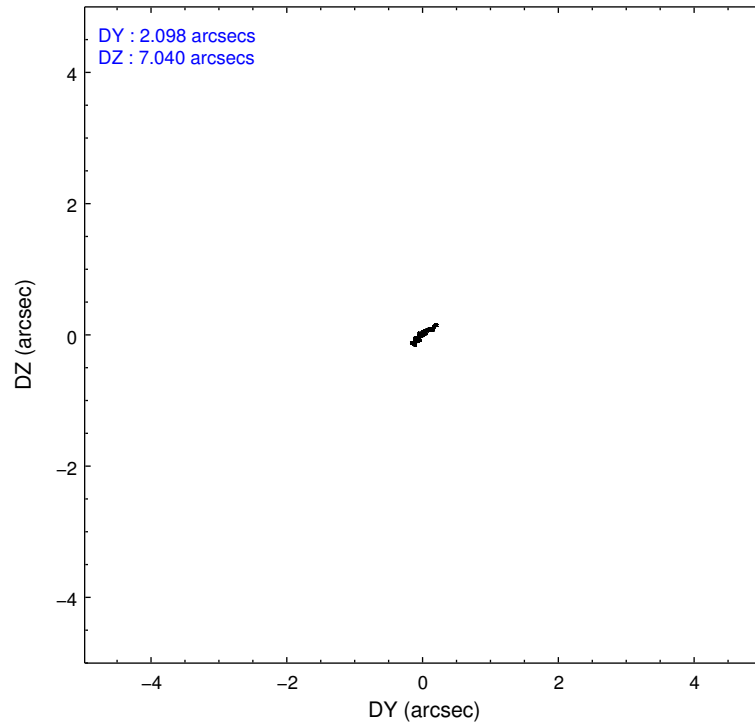
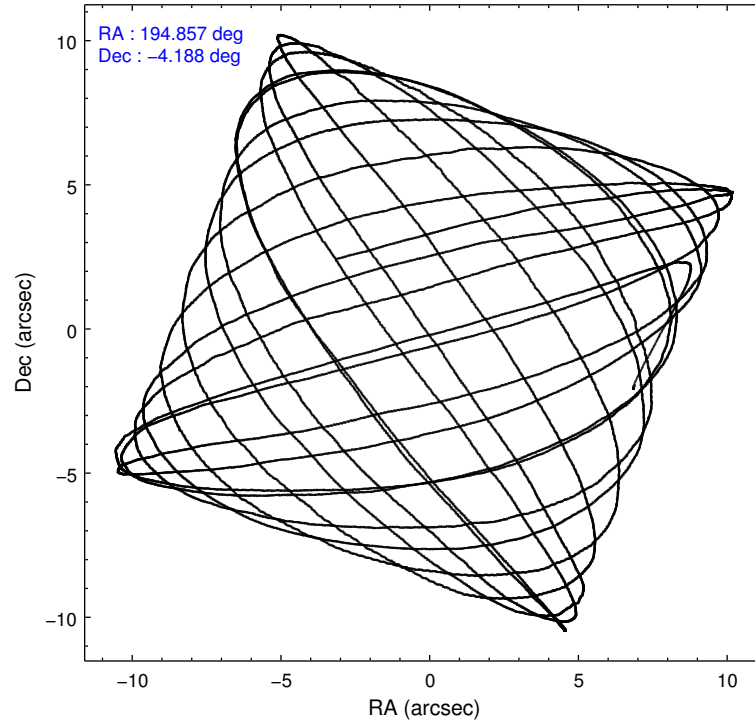
| | ccd 0 | ccd 1 | ccd 2 | ccd 3 | ccd 6 |
|-----------------|-------|-------|-------|-------|-------|
| level 1 events | 55351 | 56041 | 63661 | 75929 | 54592 |
| rejected events | 46010 | 44628 | 52245 | 49831 | 49253 |
| rejected % | 83% | 79% | 82% | 65% | 90% |

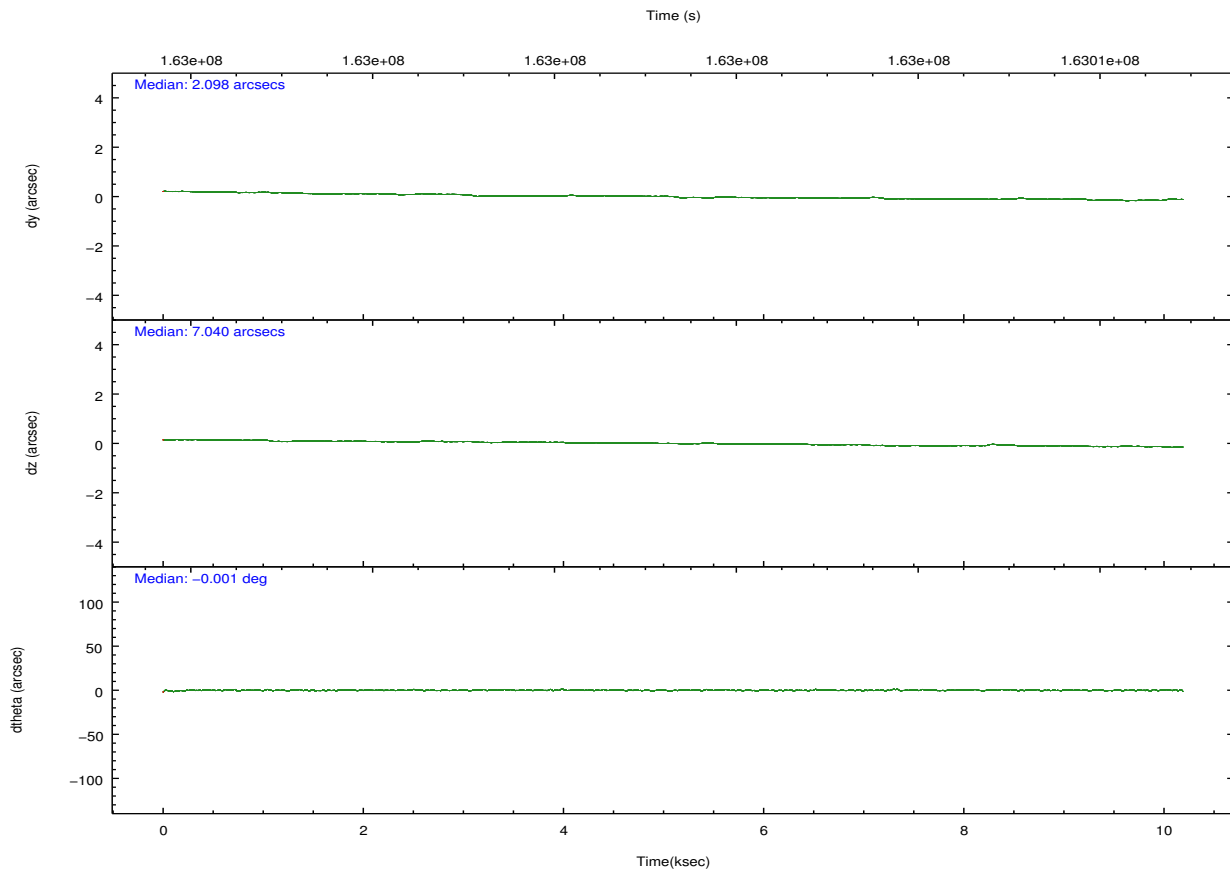
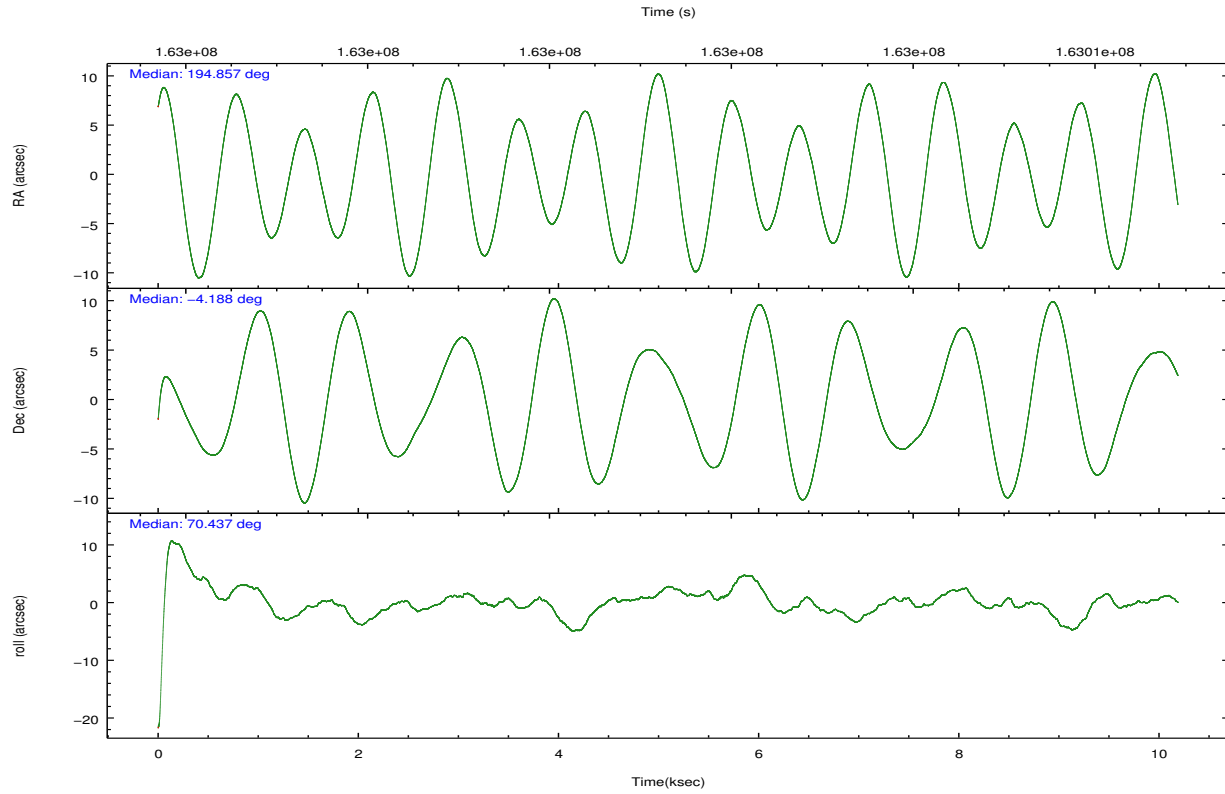
| | ccd 0 | ccd 1 | ccd 2 | ccd 3 | ccd 6 |
|----------------|-------|-------|-------|-------|-------|
| grade 0 events | 5178 | 6623 | 7110 | 19288 | 1924 |
| | 9% | 11% | 11% | 25% | 3% |
| grade 1 events | 35 | 46 | 53 | 109 | 20 |
| | 0% | 0% | 0% | 0% | 0% |
| grade 2 events | 1627 | 1828 | 1782 | 3015 | 1088 |
| | 2% | 3% | 2% | 3% | 1% |
| grade 3 events | 724 | 866 | 714 | 1167 | 634 |
| | 1% | 1% | 1% | 1% | 1% |
| grade 4 events | 727 | 822 | 749 | 1173 | 616 |
| | 1% | 1% | 1% | 1% | 1% |
| grade 5 events | 1831 | 2001 | 1837 | 2080 | 2002 |
| | 3% | 3% | 2% | 2% | 3% |
| grade 6 events | 1092 | 1282 | 1066 | 1473 | 1080 |
| | 1% | 2% | 1% | 1% | 1% |
| grade 7 events | 44137 | 42573 | 50350 | 47624 | 47228 |
| | 79% | 75% | 79% | 62% | 86% |

2.2 Compared Parameters

| Parameter | Planned | Actual | Parameter | Planned | Actual |
|-----------------------------------|---------------------|-----------------------|---------------------------------------|-----------|---------|
| Instrument | ACIS | ACIS | Obspar format version number | 7 | 7 |
| Detector | ACIS-01236 | ACIS-01236 | Obspar file type | PREDICTED | ACTUAL |
| Grating | NONE | NONE | Obspar update status | NONE | UPDATED |
| Data mode | VFAINT | VFAINT | Number of optional ACIS chips dropped | 0 | 0 |
| Observation mode | POINTING | POINTING | On-chip summing requested | N | N |
| [deg] Pointing RA | 194.862460 | 194.8573905052473 | Subarray requested | NONE | NONE |
| [deg] Pointing Dec | -4.214584 | -4.187667397862948 | Alternating exposures requested | N | N |
| [deg] Pointing Roll | 70.232638 | 70.44092084291304 | [s] Primary exposure time | 0.000000 | 3.1 |
| [mm] SIM focus pos | -0.782348 | -0.7809083437167272 | | | |
| [mm] SIM defocus | 0 | 0.001439871863259334 | | | |
| [mm] SIM translation stage pos | -233.592463 | -233.5874344608287 | | | |
| [mm] SIM translation stage offset | 0 | -0.005018542100998502 | | | |
| [s] Observation start time (MET) | 162996397.184000 | 162995307.68655 | | | |
| Observation start date | 2003-03-02T12:45:33 | 2003-03-02T12:28:27 | | | |
| [s] Observation end time (MET) | 163006397.184000 | 163006717.98703 | | | |
| Observation end date | 2003-03-02T15:32:13 | 2003-03-02T15:38:37 | | | |
| Read mode | TIMED | TIMED | | | |

2.3 Aspect



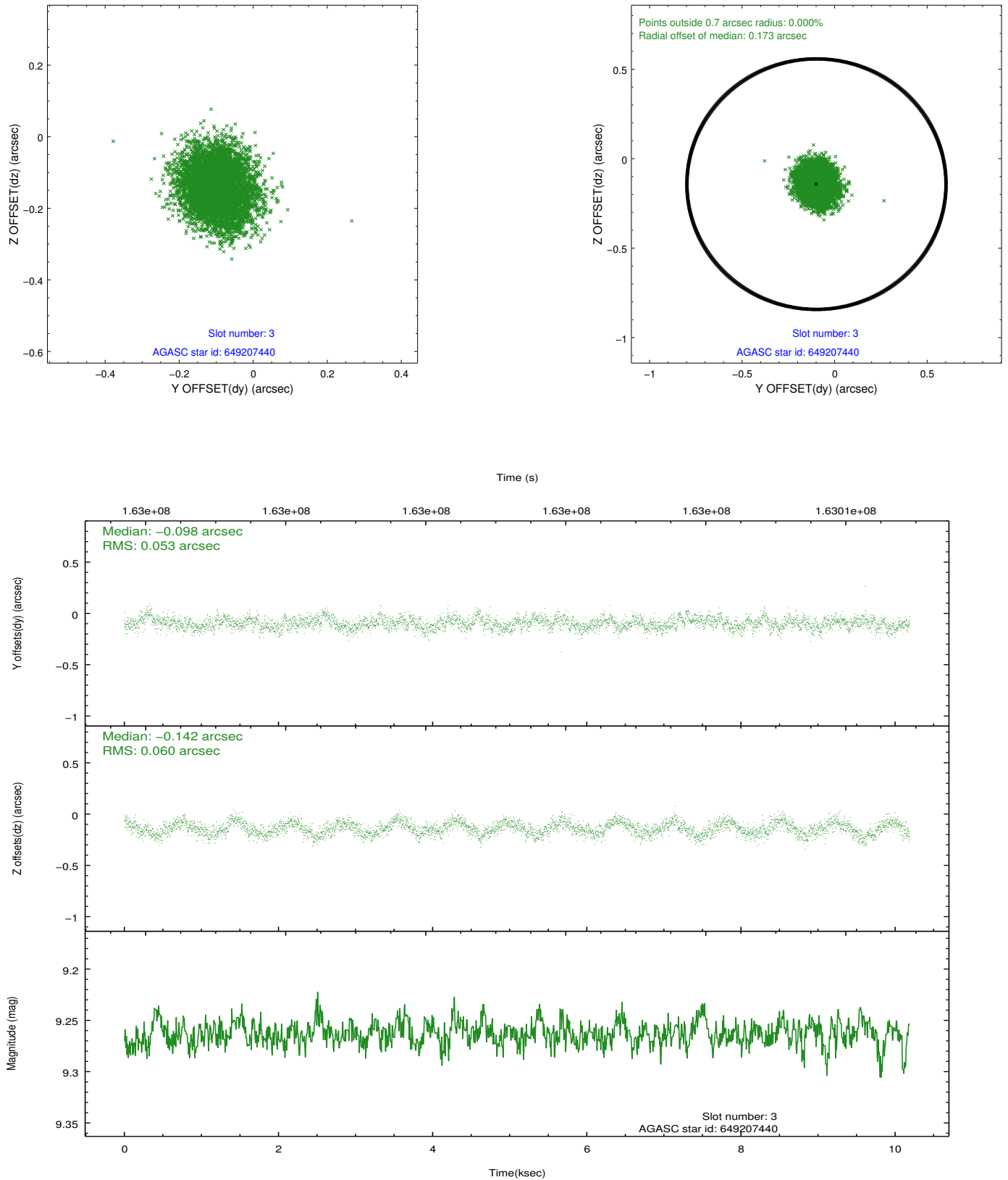


Slot Statistics

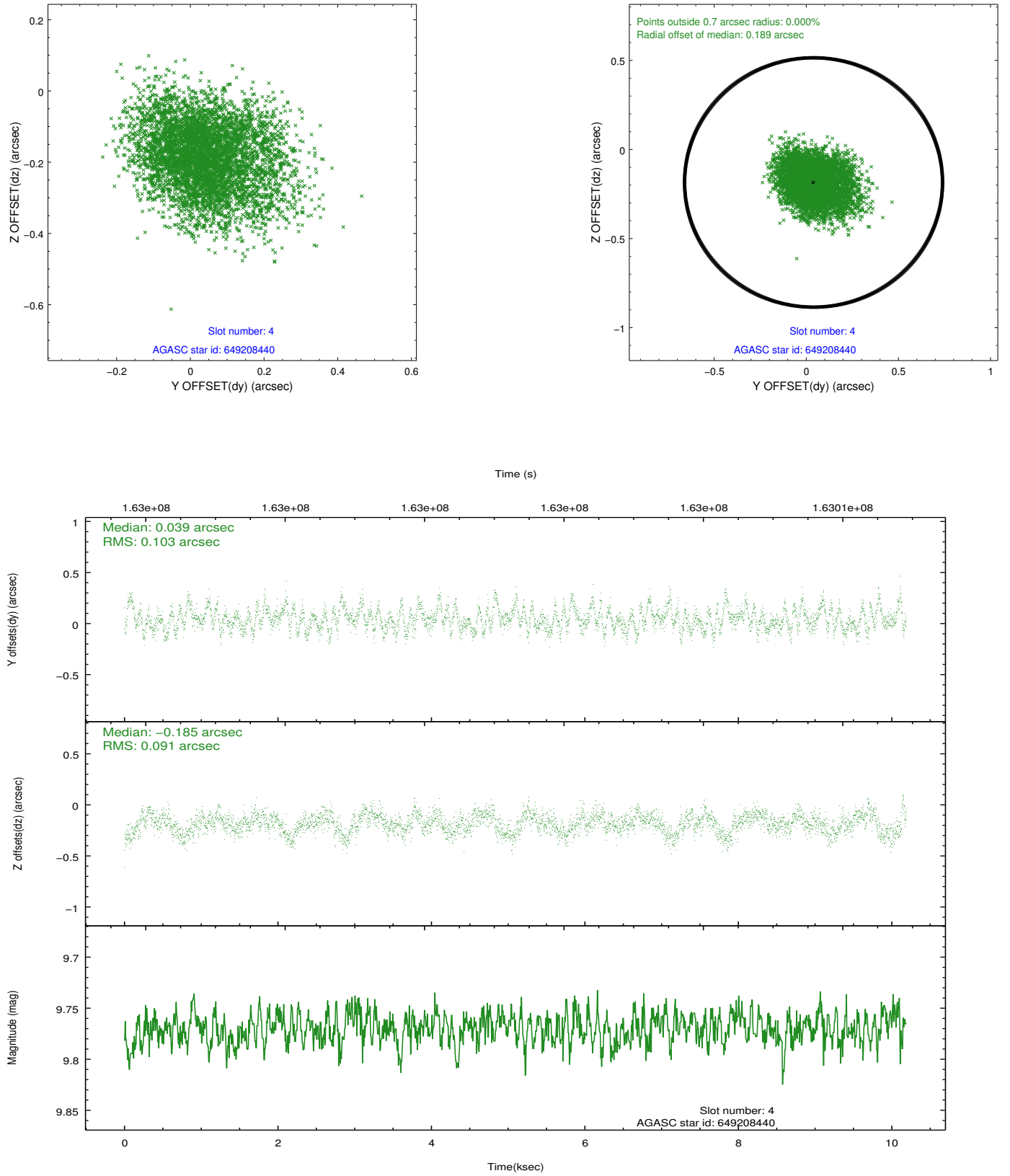
| slot | status | id | mag | n_pts | med_dy | med_dz | dr1 | dr2 | ra | dec | mean_y | mean_z |
|------|--------|-----------|------|-------|--------|--------|-------|-------|------------|-----------|----------|----------|
| 0 | FID | ACIS-I-1 | 7.25 | 2486 | 0.005 | 0.013 | 0.006 | 0.011 | 0.000000 | 0.000000 | 937.70 | -830.44 |
| 1 | FID | ACIS-I-5 | 7.24 | 2486 | -0.067 | 0.052 | 0.006 | 0.011 | 0.000000 | 0.000000 | -1810.15 | 1066.89 |
| 2 | FID | ACIS-I-6 | 7.26 | 2486 | -0.029 | 0.005 | 0.007 | 0.011 | 0.000000 | 0.000000 | 402.71 | 1711.89 |
| 3 | GUIDE | 649207440 | 9.26 | 4968 | -0.098 | -0.142 | 0.087 | 0.135 | 194.739470 | -3.656543 | 1741.02 | 1095.87 |
| 4 | GUIDE | 649208440 | 9.77 | 4967 | 0.039 | -0.185 | 0.147 | 0.237 | 194.124200 | -4.484025 | -1809.81 | 2165.30 |
| 5 | GUIDE | 650117472 | 9.64 | 4970 | -0.120 | 0.169 | 0.115 | 0.187 | 195.607602 | -4.000561 | 1628.62 | -2256.71 |
| 6 | GUIDE | 650126048 | 9.74 | 4964 | 0.109 | 0.081 | 0.100 | 0.162 | 195.142698 | -4.886476 | -1936.04 | -1764.23 |
| 7 | GUIDE | 649205696 | 7.93 | 4969 | 0.063 | 0.079 | 0.066 | 0.102 | 194.848693 | -4.906768 | -2361.90 | -796.40 |

2.4 Star Slots

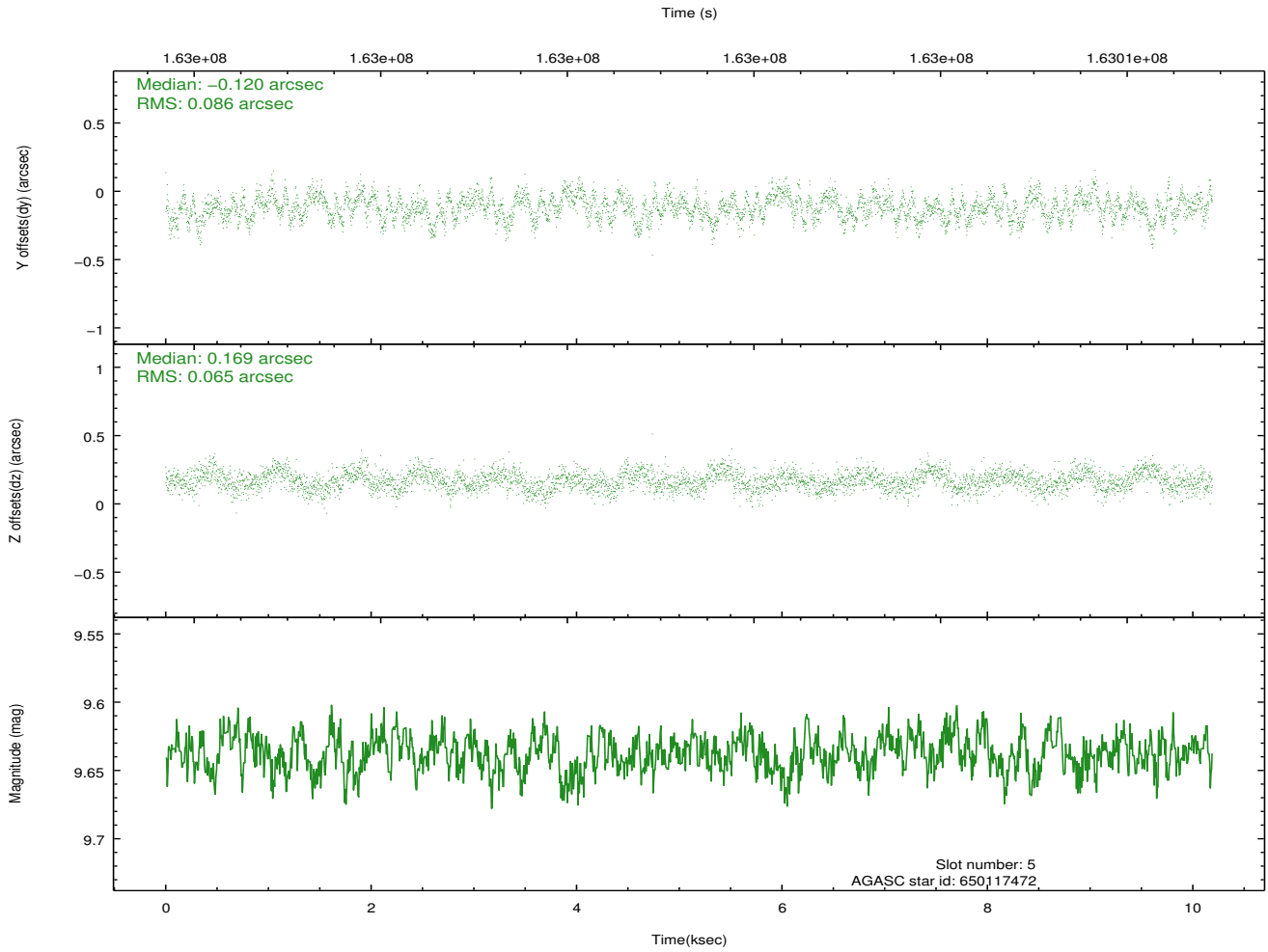
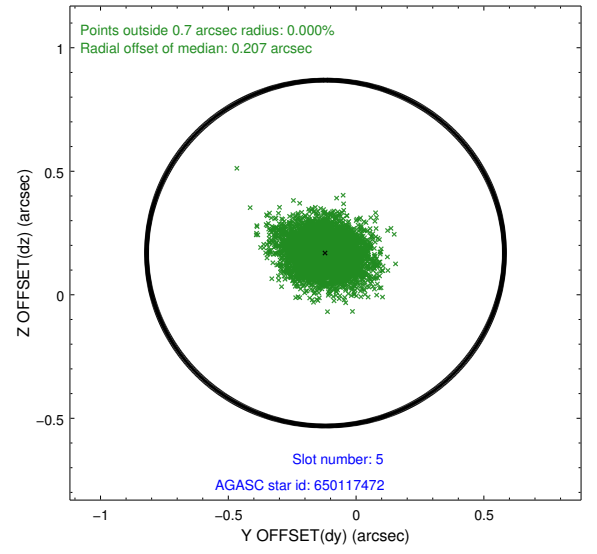
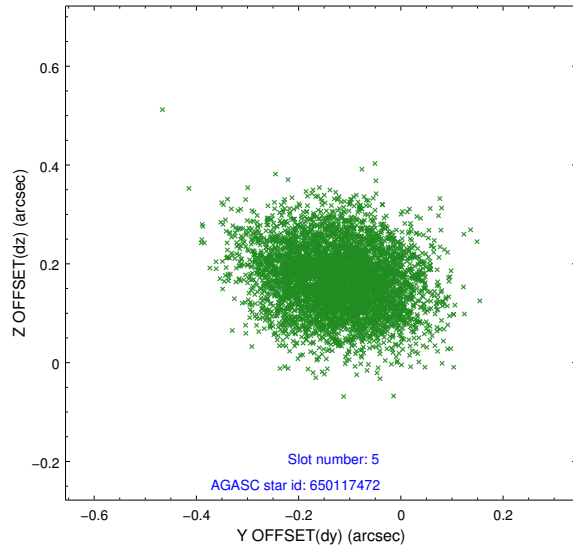
2.4.1 Slot 3



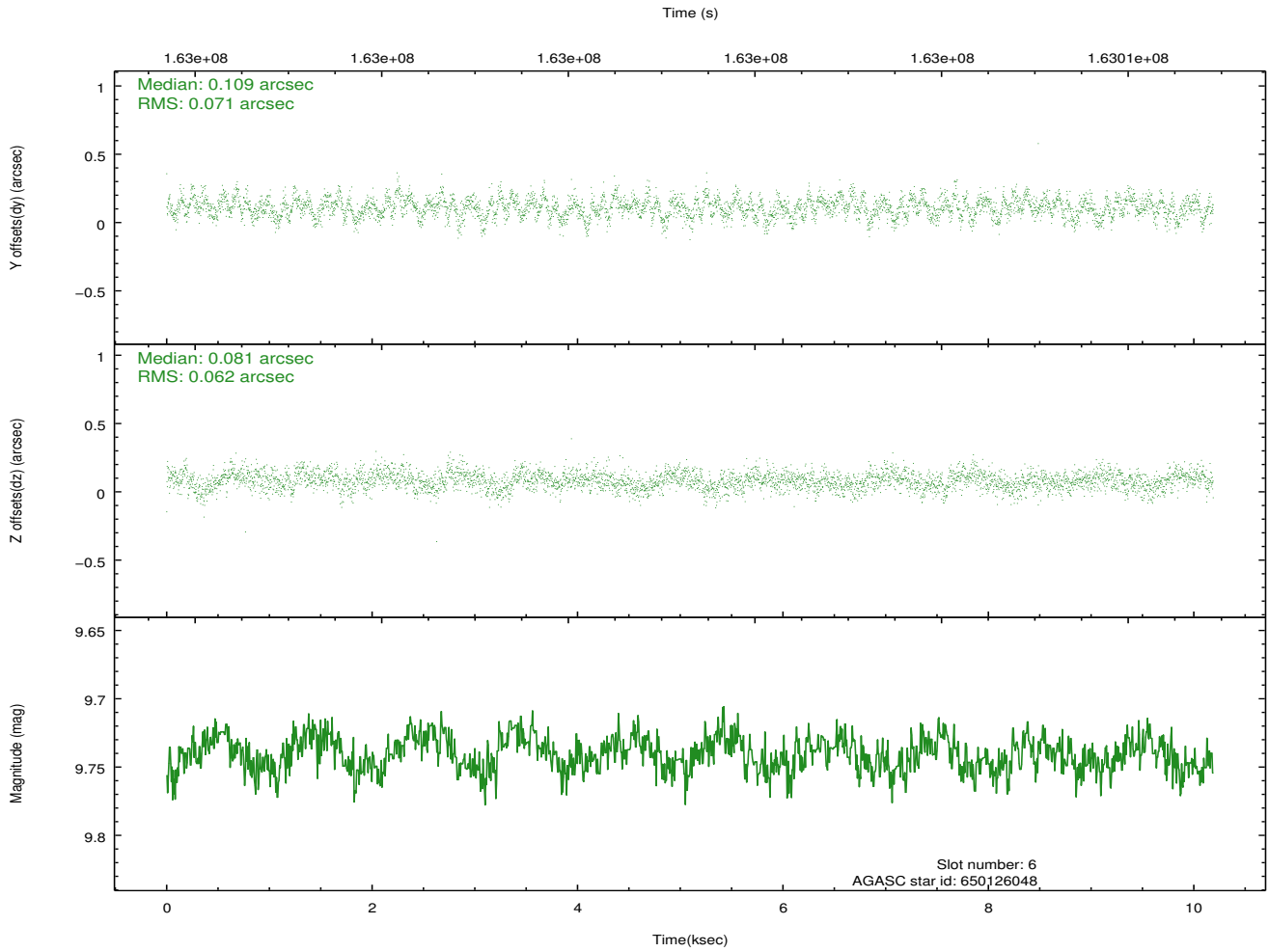
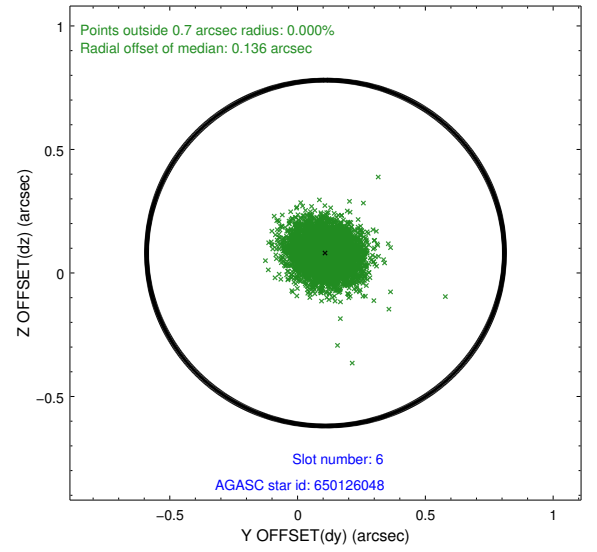
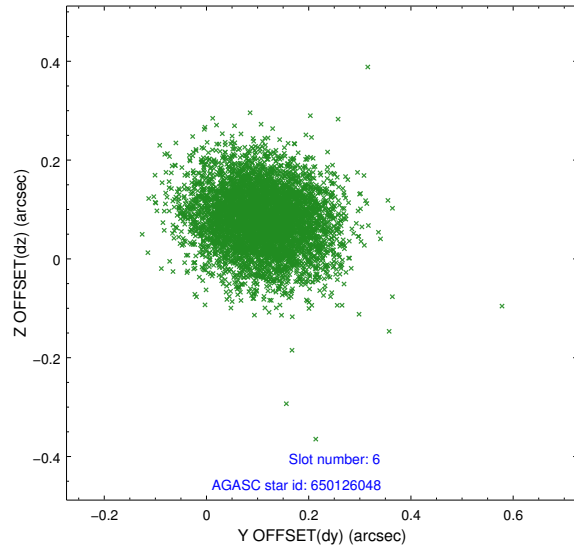
2.4.2 Slot 4



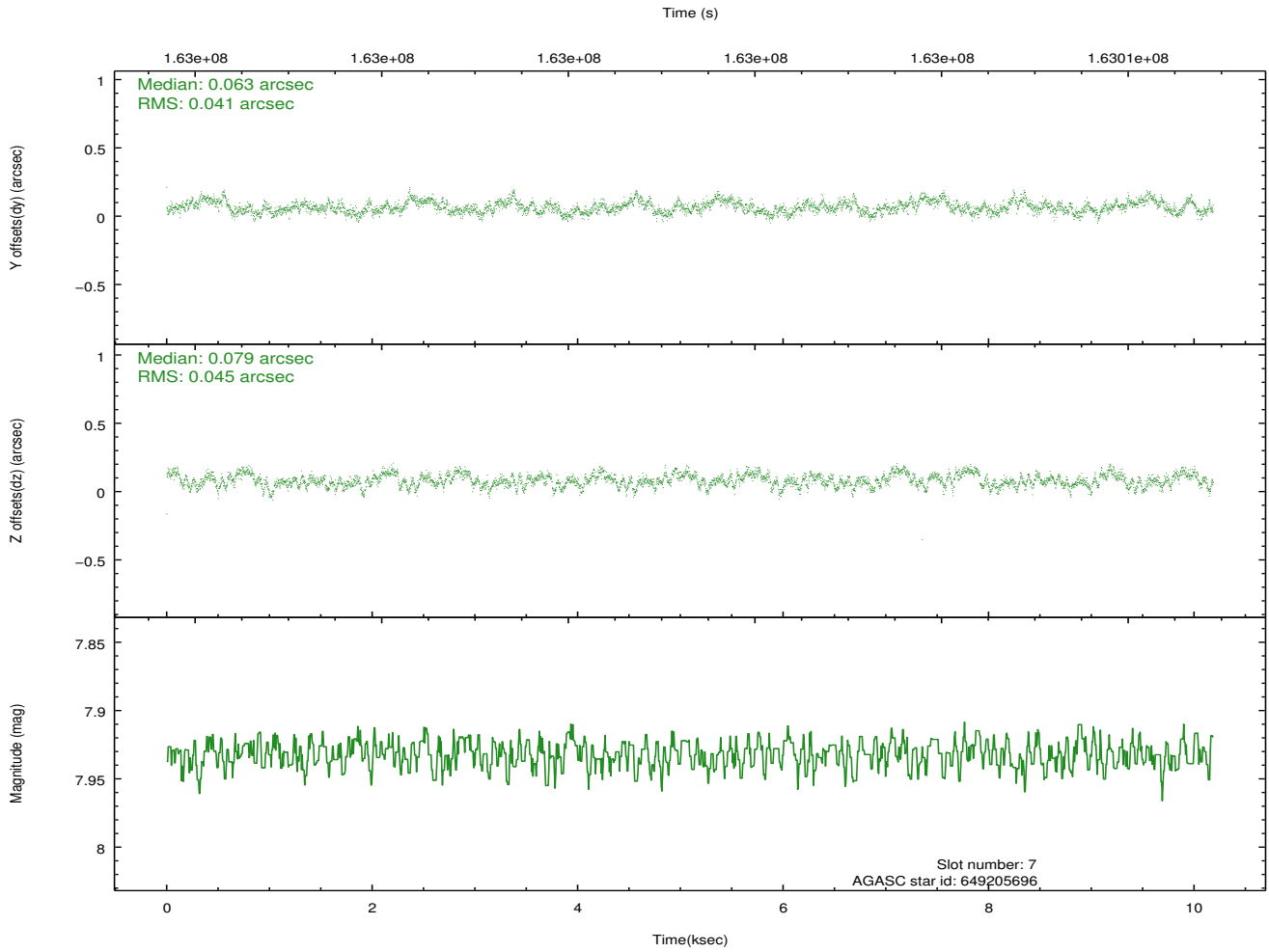
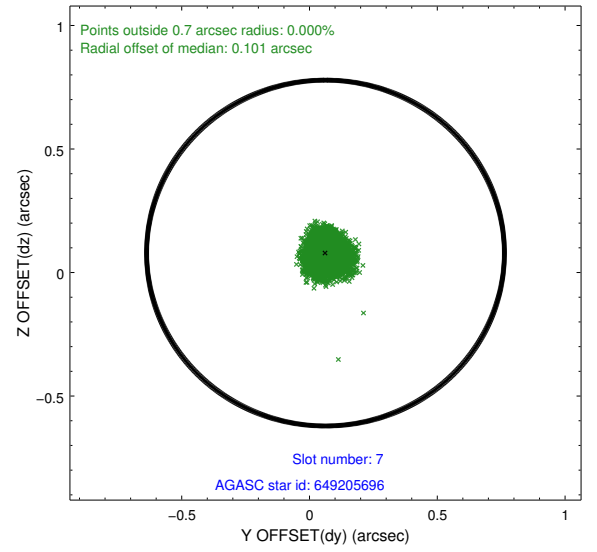
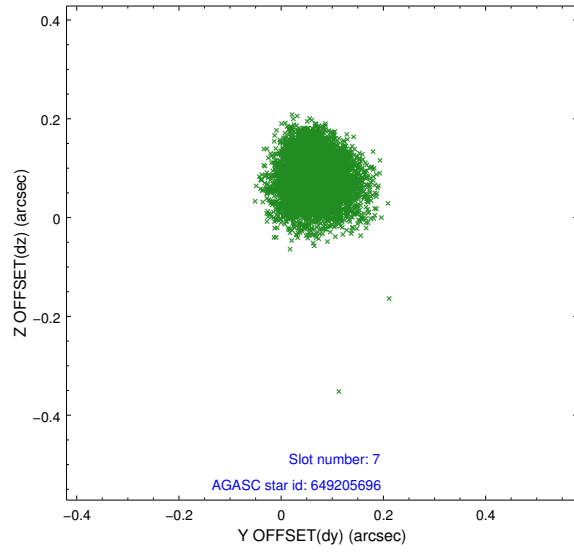
2.4.3 Slot 5



2.4.4 Slot 6

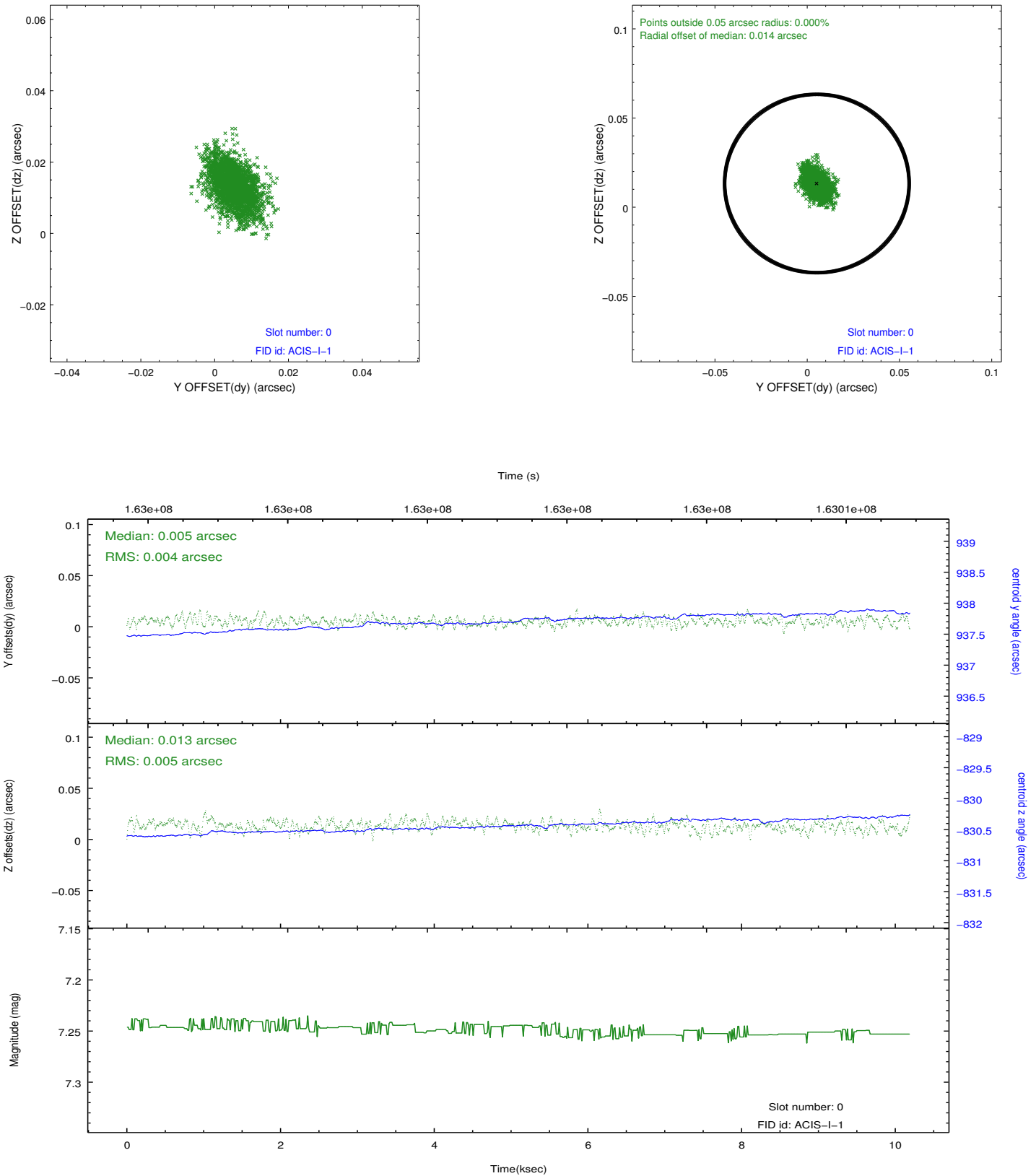


2.4.5 Slot 7

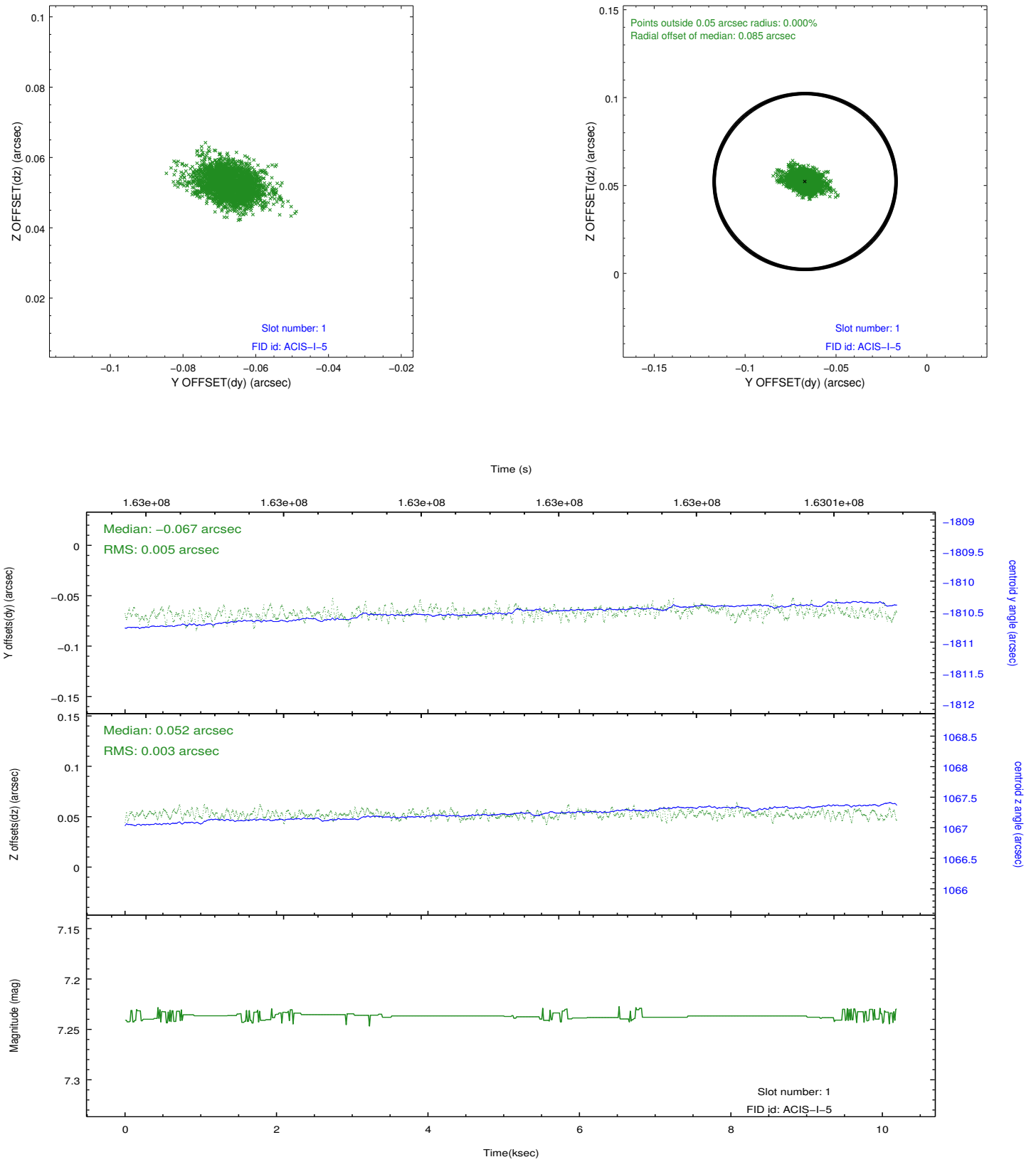


2.5 FID Slots

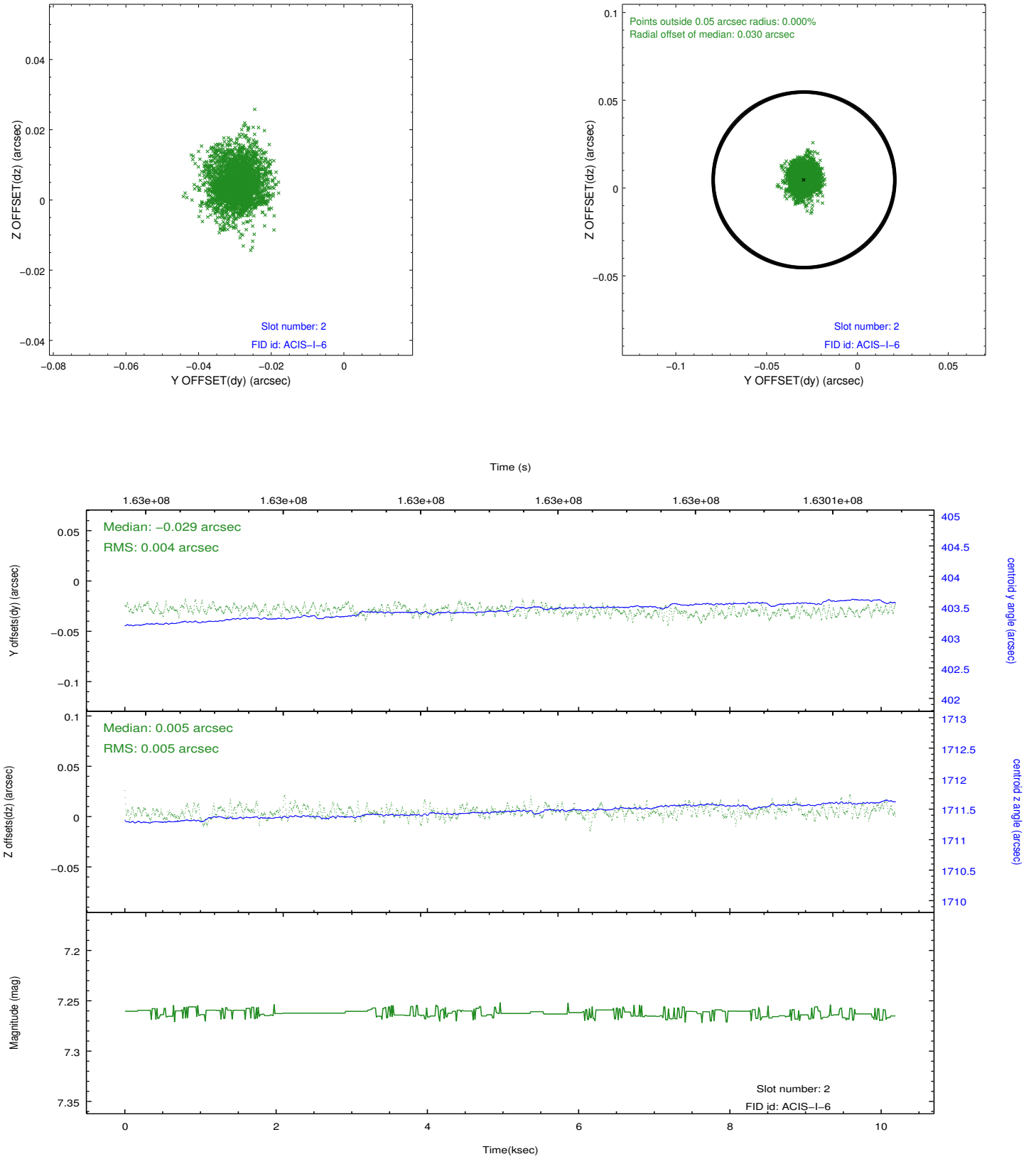
2.5.1 Slot 0



2.5.2 Slot 1



2.5.3 Slot 2



A Summary

A.1 Status

| | |
|----------------------------|------------|
| V&V Scientist | Jen Lauer |
| V&V Date (YYYY-MM-DD) | 2012.11.07 |
| V&V Edition | 1 |
| V&V Disposition and Status | OK |
| V&V Charge Time | 9.774 |

A.2 Comments