

V&V Reference Report

L2 ASCDS Version : 7.6.8

Observation 4161 - L2 Version 001
Chandra X-Ray Center

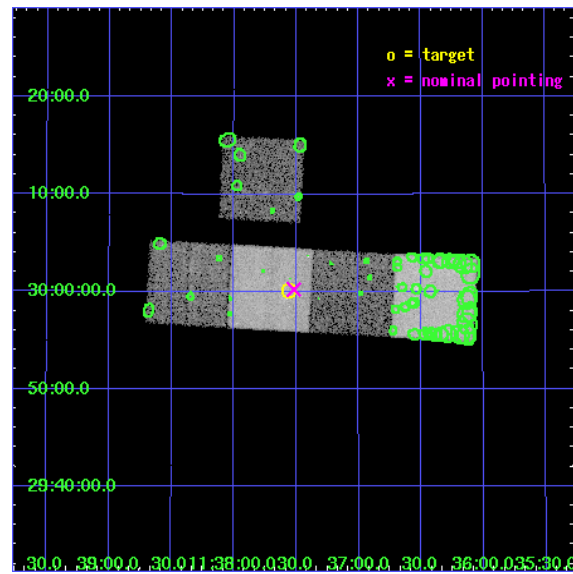
L2 Processing Date : Jul 24 2006

Contents

1	Front	2
2	OBI	3
2.1	OBI	3
2.1.1	Images	3
2.1.2	Bias	3
2.1.3	Parameters	4
2.1.4	Events	4
2.2	Compared Parameters	5
2.3	Aspect	6
2.4	Star Slots	9
2.4.1	Slot 3	9
2.4.2	Slot 4	10
2.4.3	Slot 5	11
2.4.4	Slot 6	12
2.4.5	Slot 7	13
2.5	FID Slots	14
2.5.1	Slot 0	14
2.5.2	Slot 1	15
2.5.3	Slot 2	16
3	Point Sources	17
A	Summary	18
A.1	Status	18
A.2	Comments	18

1 Front

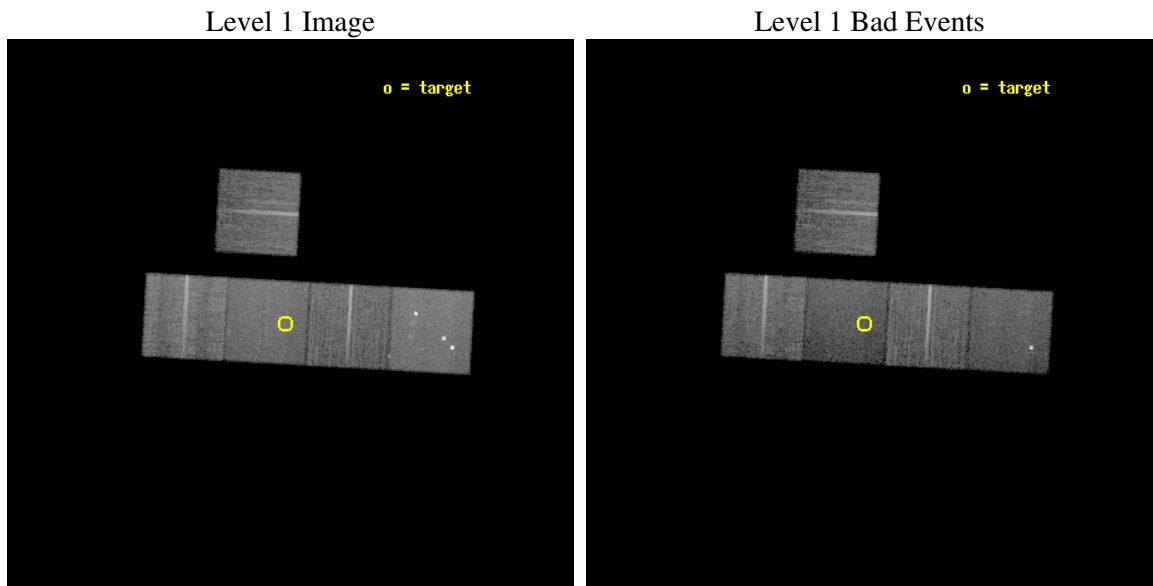
seq_num	800317
obs_id	4161
title	A HIGH-REDSHIFT ($Z=0.95$) CLUSTER REVEALED BY A FIRST BENT-DOUBLE RADIO SOURCE
observer	Dr. Craig Sarazin
object	BD1137+3000
dtcycle	0
cycle	P
ra_targ	174.390833
dec_targ	30.002778
ra_nom	174.3797442534
dec_nom	30.003947925394
roll_nom	183.18082664588
revision	3
ontime	20103.499961346
livetime	19840.83293437
ontime3	20103.499961346
ontime5	20103.499961346
ontime6	20100.358981103
ontime7	20103.499961346
ontime8	20100.358961225
l2events	145764



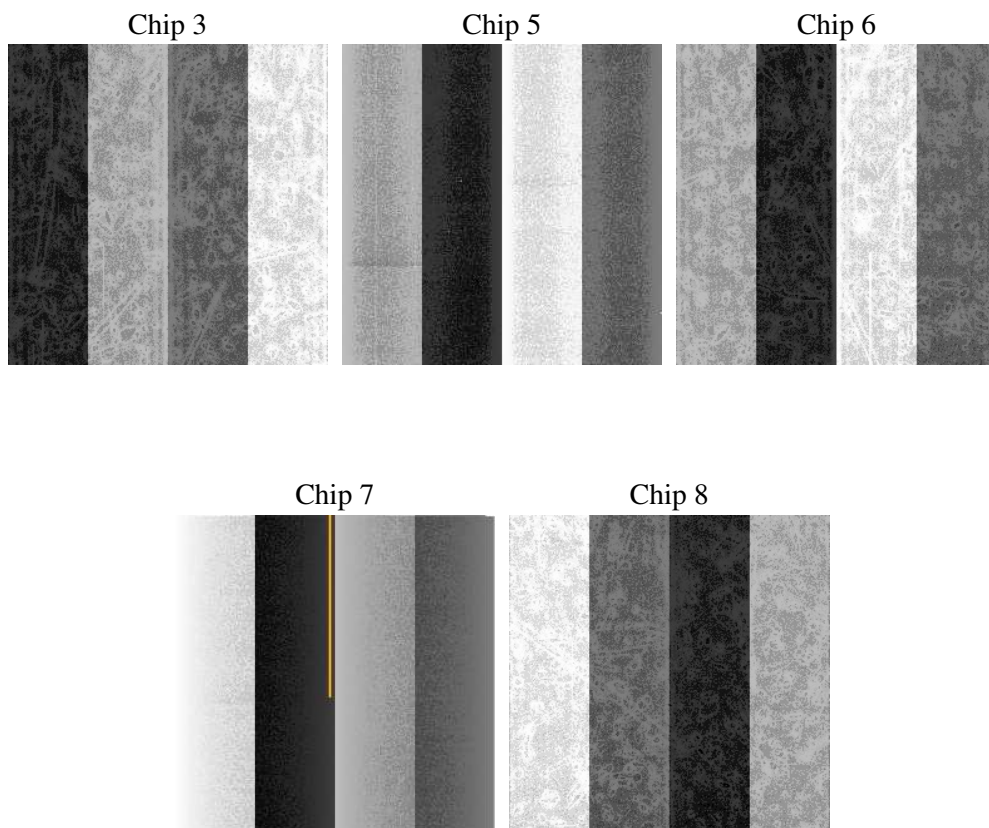
2 OBI

2.1 OBI

2.1.1 Images



2.1.2 Bias



2.1.3 Parameters

obi_num	0
ascdsver	7.6.8
caldsver	3.2.2
date	2006-07-24T18:55:05
revision	3

sched_exp_time	20000.000000
ontime	20108.747007638
ontime3	20108.747007638
ontime5	20108.747027576
ontime6	20105.606027395
ontime7	20108.747007638
ontime8	20105.606007516
l1events	627185

2.1.4 Events

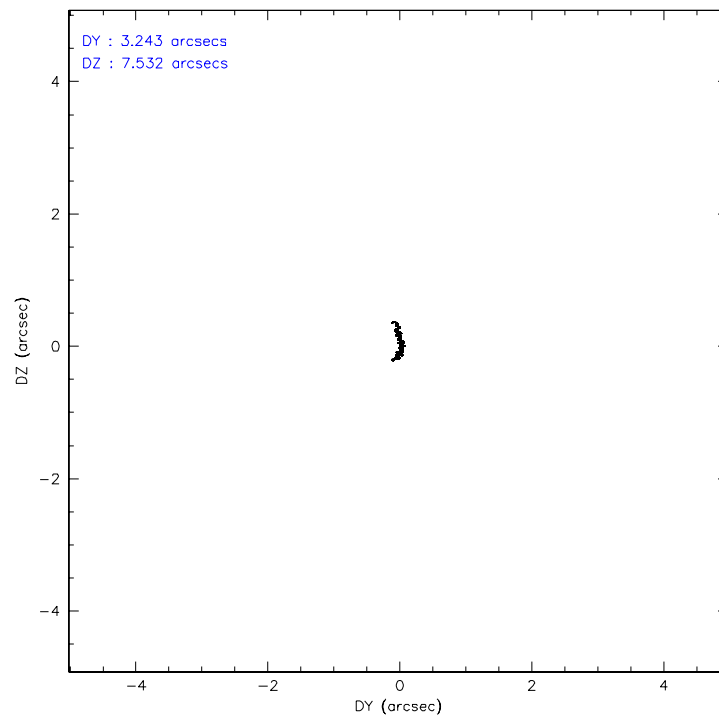
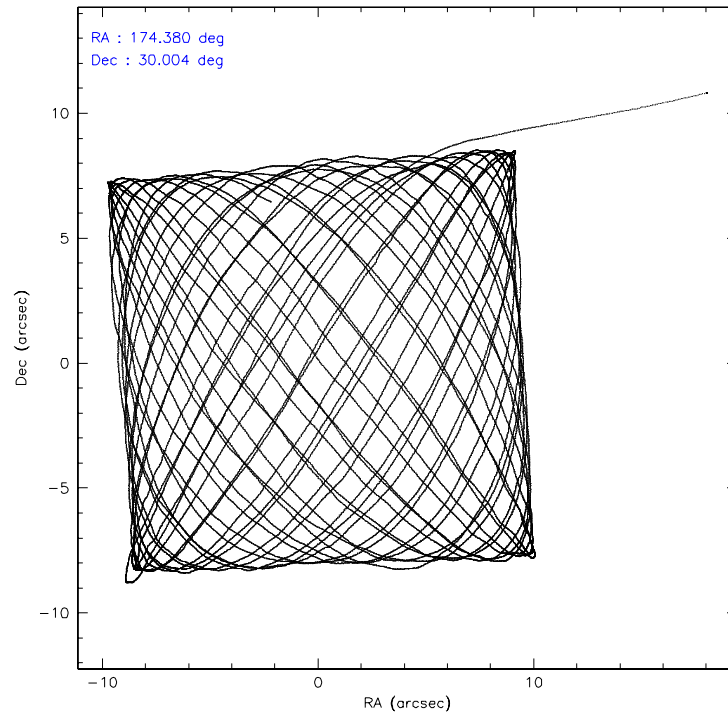
	ccd 3	ccd 5	ccd 6	ccd 7	ccd 8
level 1 events	107245	155787	109011	118441	136701
rejected events	97342	76203	97838	67591	106392
rejected %	90%	48%	89%	57%	77%

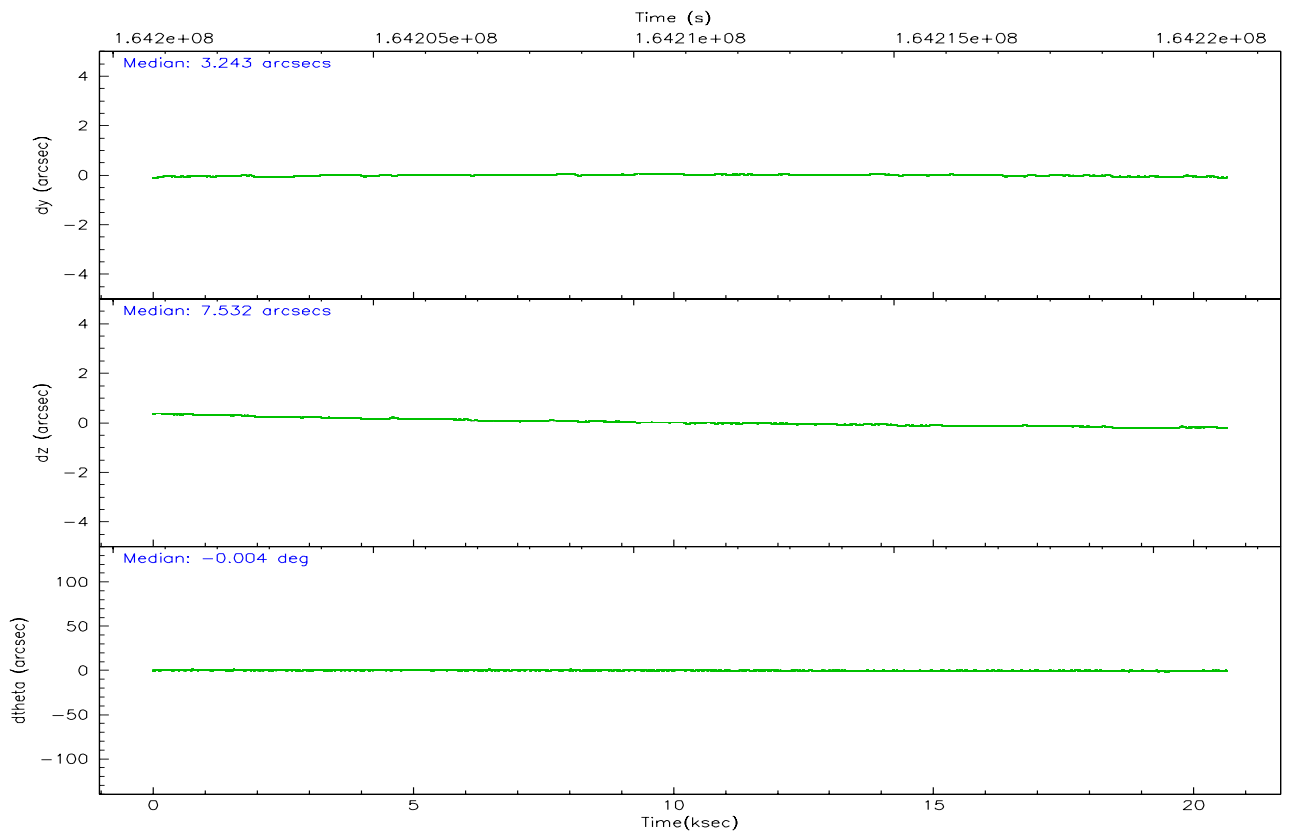
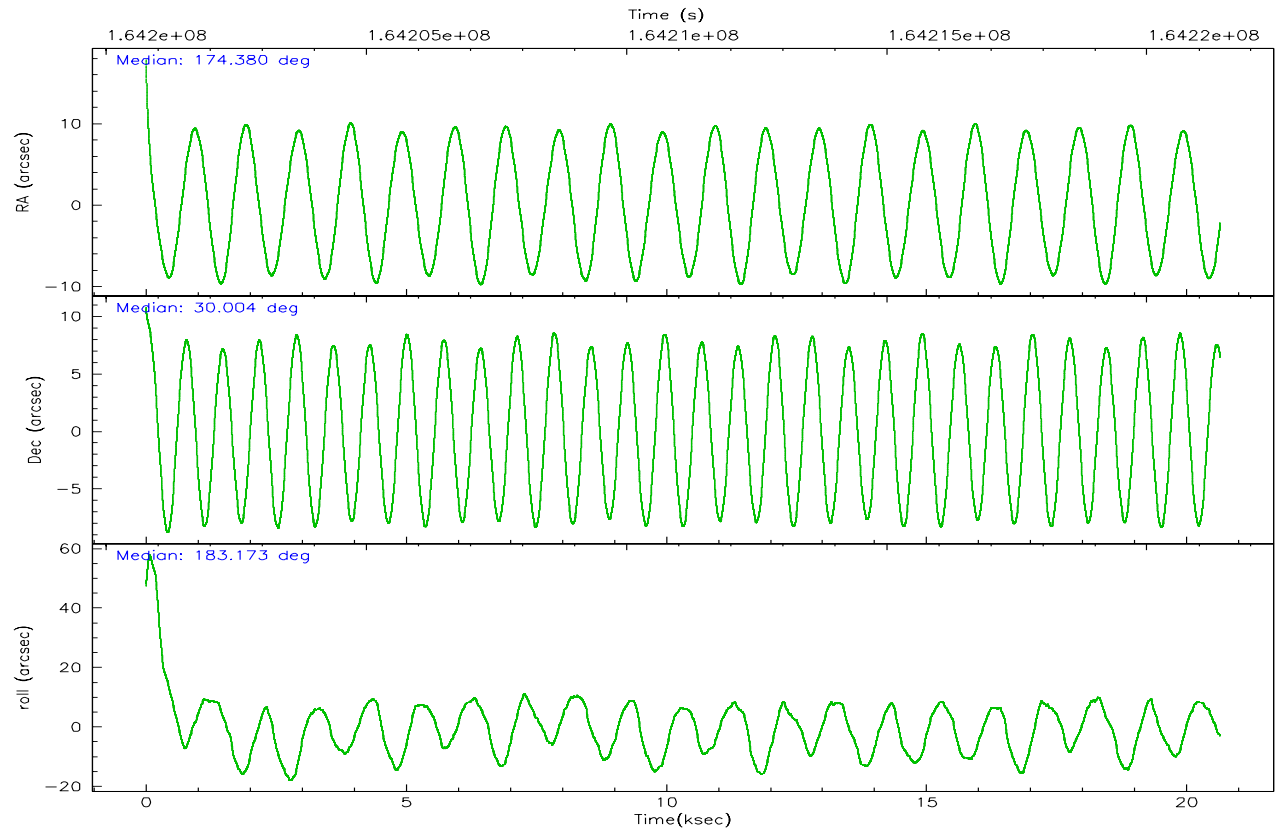
	ccd 3	ccd 5	ccd 6	ccd 7	ccd 8
grade 0 events	3535	12600	4005	3323	9170
	3%	8%	3%	2%	6%
grade 1 events	43	2802	59	65	108
	0%	1%	0%	0%	0%
grade 2 events	2114	24337	2401	12336	6616
	1%	15%	2%	10%	4%
grade 3 events	1167	2000	1285	3105	3309
	1%	1%	1%	2%	2%
grade 4 events	1161	1933	1255	3032	3169
	1%	1%	1%	2%	2%
grade 5 events	4020	7647	4118	9077	5841
	3%	4%	3%	7%	4%
grade 6 events	1930	38739	2228	29077	8050
	1%	24%	2%	24%	5%
grade 7 events	93275	65729	93660	58426	100438
	86%	42%	85%	49%	73%

2.2 Compared Parameters

Parameter	Planned	Actual	Parameter	Planned	Actual
Instrument	ACIS	ACIS	Obspar format version number	6	6
Detector	ACIS-35678	ACIS-35678	Obspar file type	PREDICTED	ACTUAL
Grating	NONE	NONE	Obspar update status	NONE	UPDATED
Data mode	VFAINT	VFAINT	On-chip summing requested	N	N
Observation mode	POINTING	POINTING	Subarray requested	NONE	NONE
Pointing RA	174.405827	174.3797442534039	Alternating exposures requested	N	N
Pointing Dec	30.019145	30.00394792539431	Primary exposure time	0.000000	3.1
Pointing Roll	183.011155	183.1808266458843			
SIM focus pos (mm)	-0.684267	-0.6828225247311905			
SIM defocus (mm)	0	0.001444936568705701			
SIM translation stage pos (mm)	-190.132523	-190.1400660498719			
SIM translation stage offset (mm)	0	0.00754346686406393			
Observation start time	164201413.184000	164200207.02478			
Observation start date	2003-03-16T11:29:09	2003-03-16T11:10:07			
Observation end time	164221413.184000	164221809.41319			
Observation end date	2003-03-16T17:02:29	2003-03-16T17:10:09			
Read mode	TIMED	TIMED			

2.3 Aspect



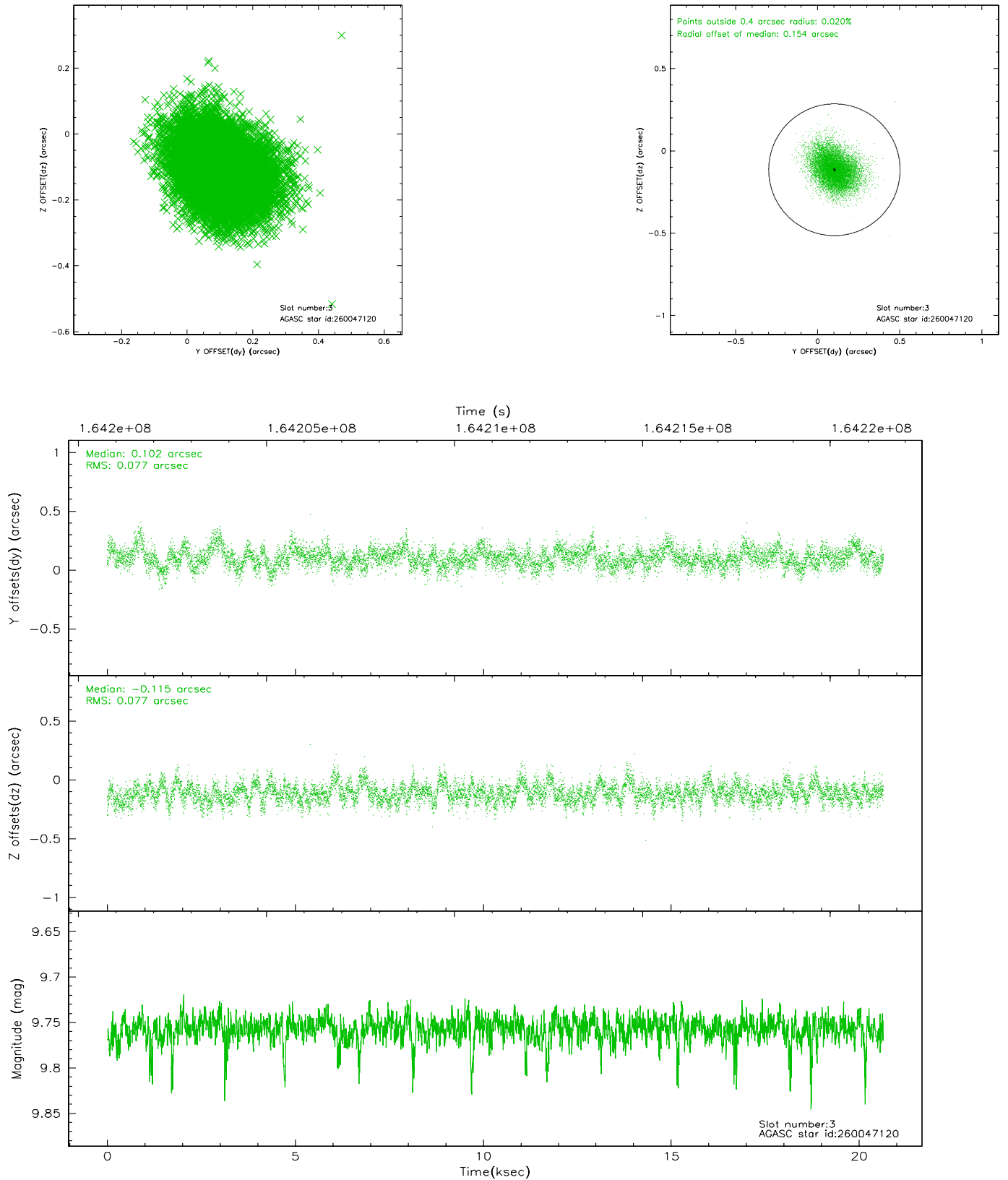


Slot Statistics

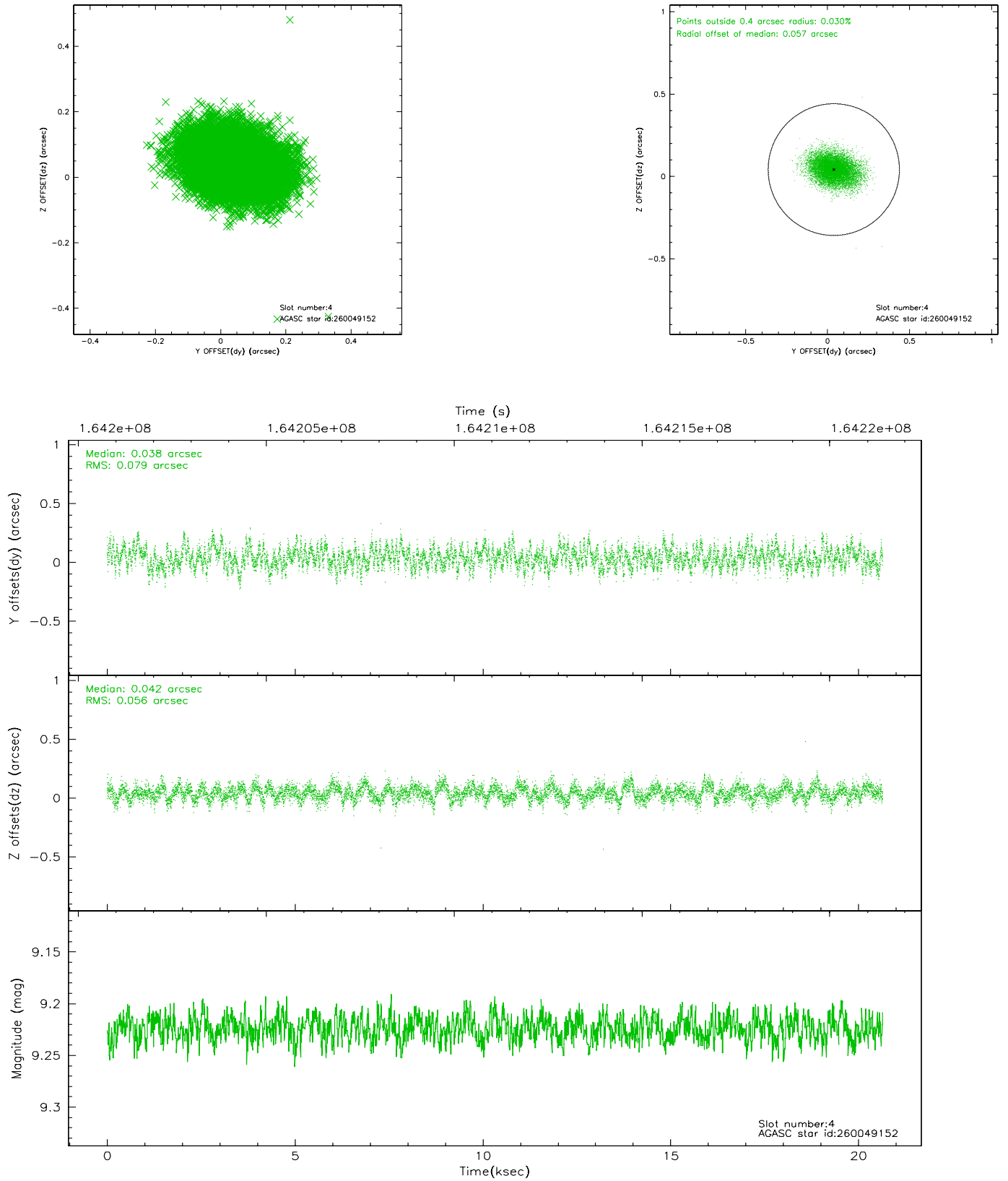
slot	status	id	mag	n_pts	med_dy	med_dz	dr1	dr2	ra	dec	mean_y	mean_z
0	FID	ACIS-S-2	7.12	5037	-0.009	0.008	0.007	0.011	0.000000	0.000000	-755.89	-1728.73
1	FID	ACIS-S-4	7.21	5037	-0.024	0.002	0.006	0.011	0.000000	0.000000	2157.29	179.57
2	FID	ACIS-S-5	7.24	5037	0.001	-0.001	0.006	0.011	0.000000	0.000000	-1808.50	173.44
3	GUIDE	260047120	9.76	10055	0.102	-0.115	0.115	0.189	173.912292	29.933667	1553.87	223.31
4	GUIDE	260049152	9.22	10064	0.038	0.042	0.103	0.170	173.769269	29.424657	2105.25	2027.55
5	GUIDE	260065288	10.44	10005	0.013	-0.031	0.289	0.462	175.033473	29.492318	-1864.65	1992.03
6	GUIDE	260066584	8.85	10068	-0.060	0.029	0.090	0.145	174.652464	29.756442	-720.22	984.33
7	GUIDE	330702192	8.96	10068	-0.071	0.083	0.090	0.142	173.840576	30.331544	1694.97	-1219.28

2.4 Star Slots

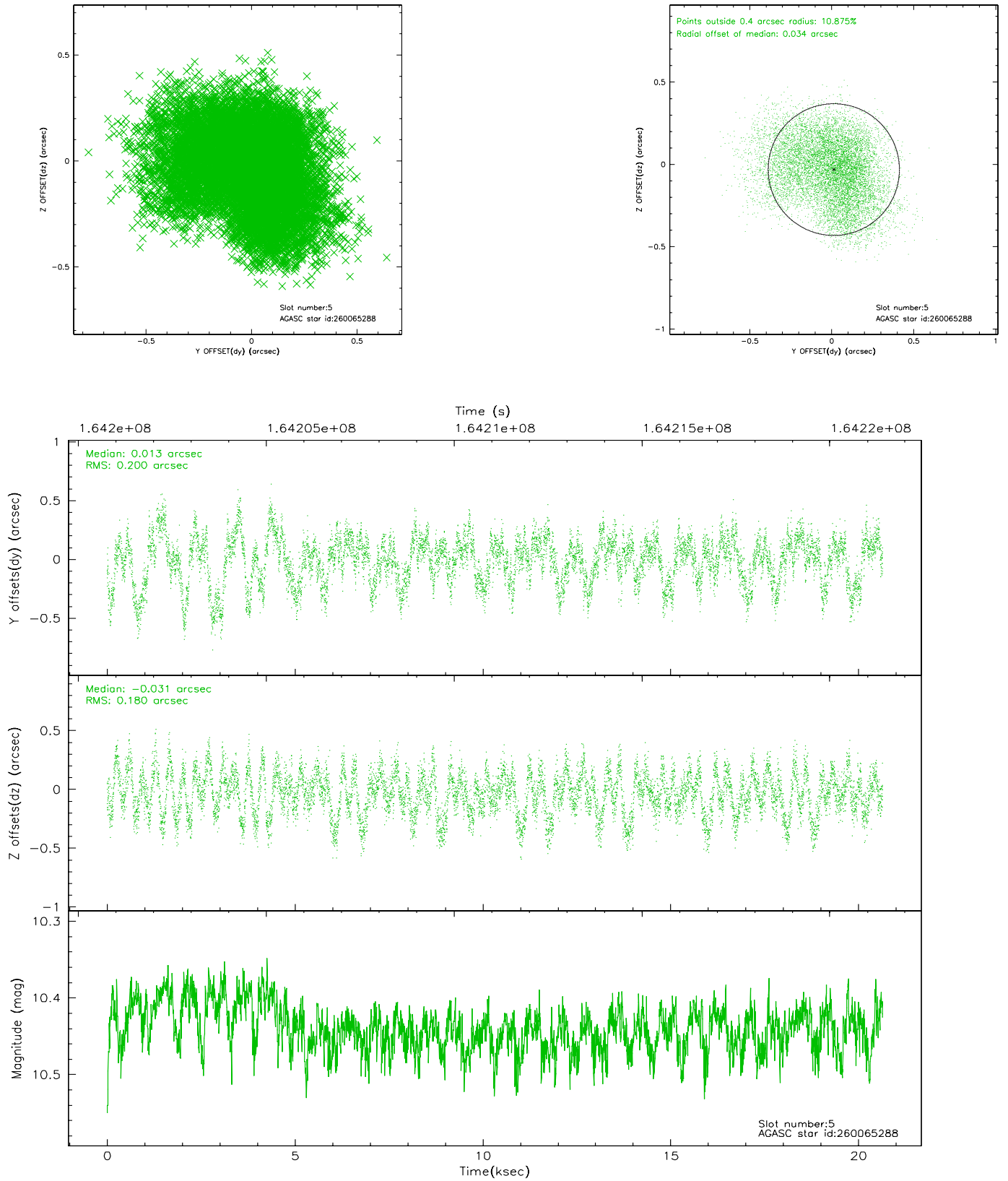
2.4.1 Slot 3



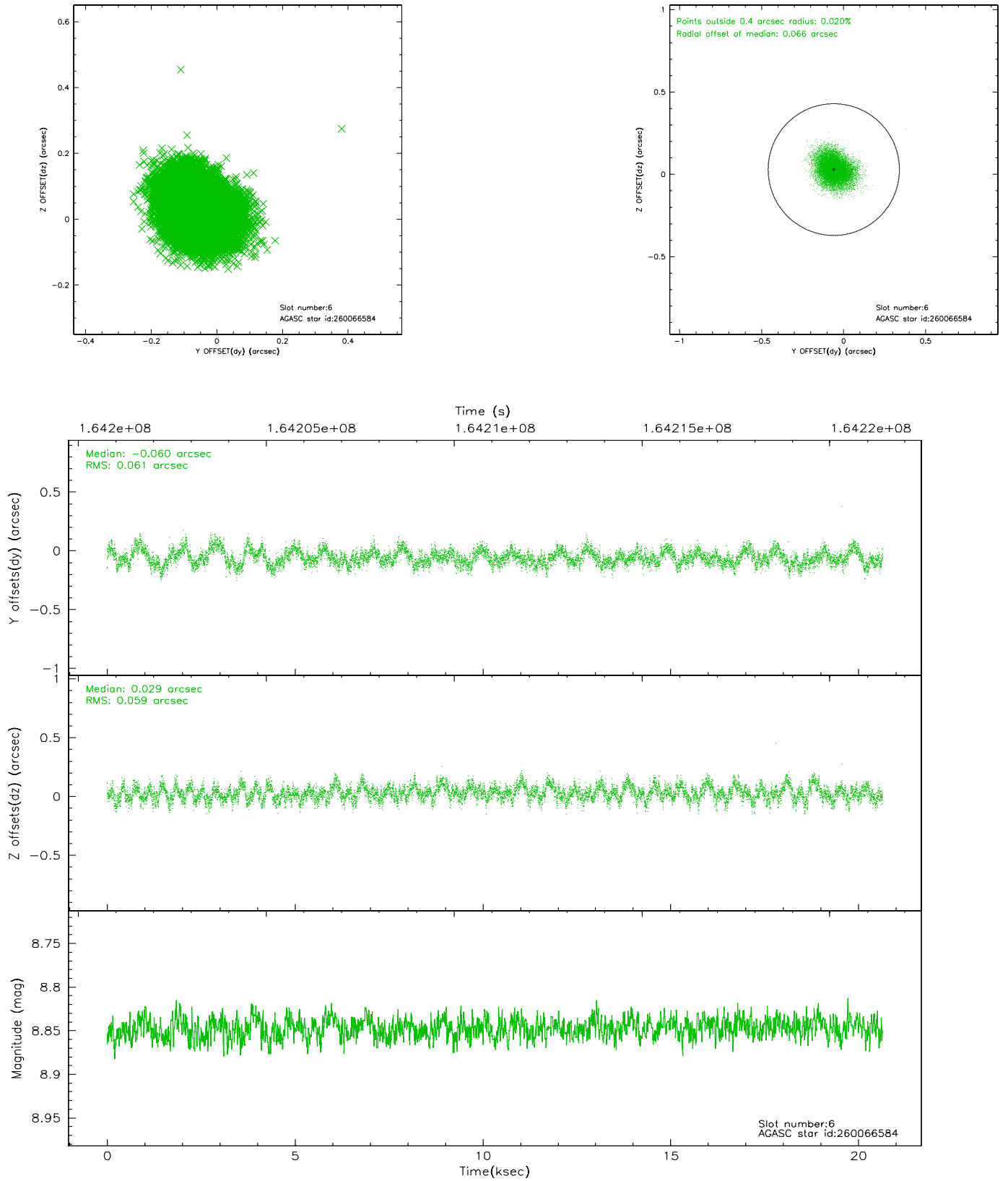
2.4.2 Slot 4



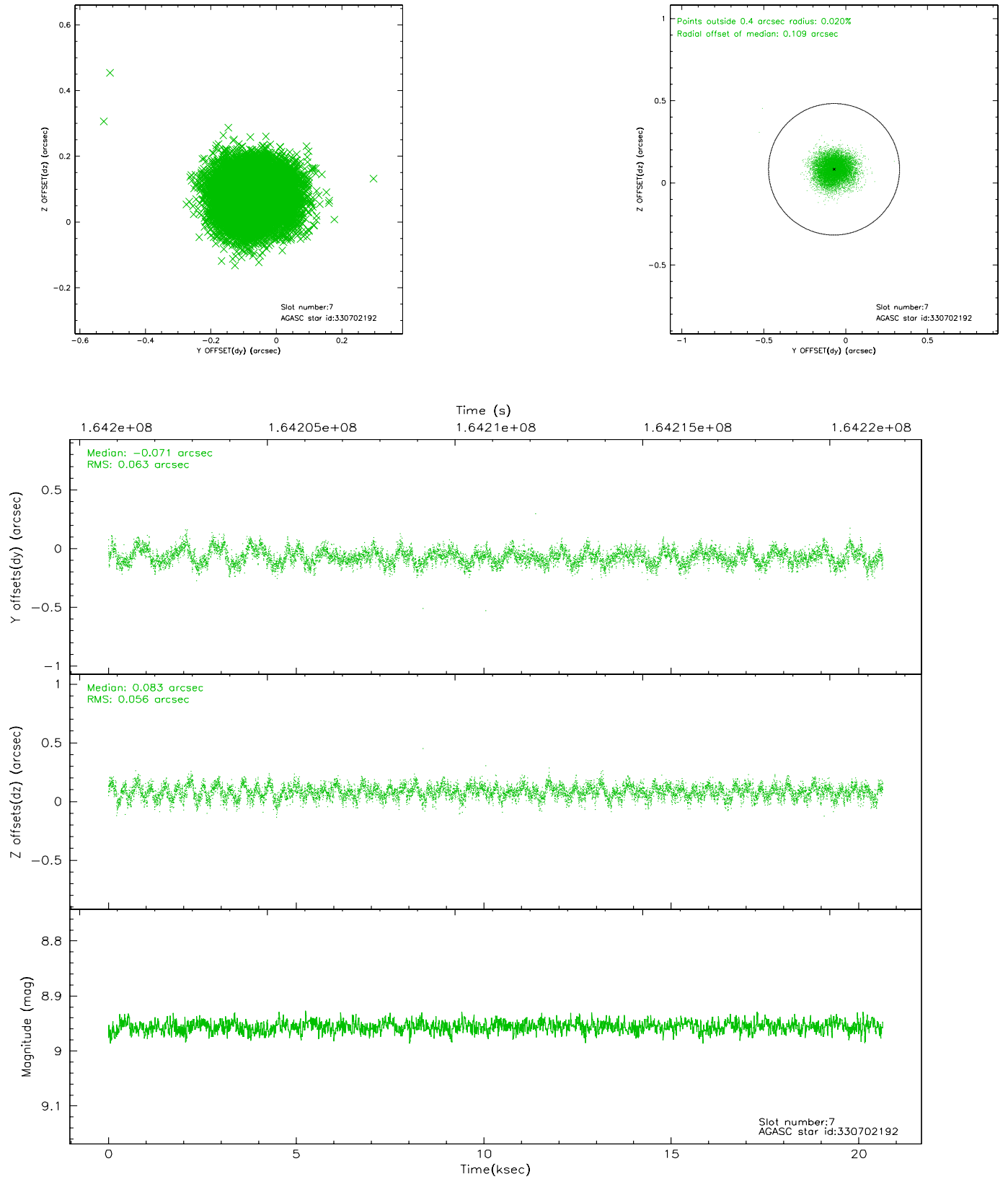
2.4.3 Slot 5



2.4.4 Slot 6

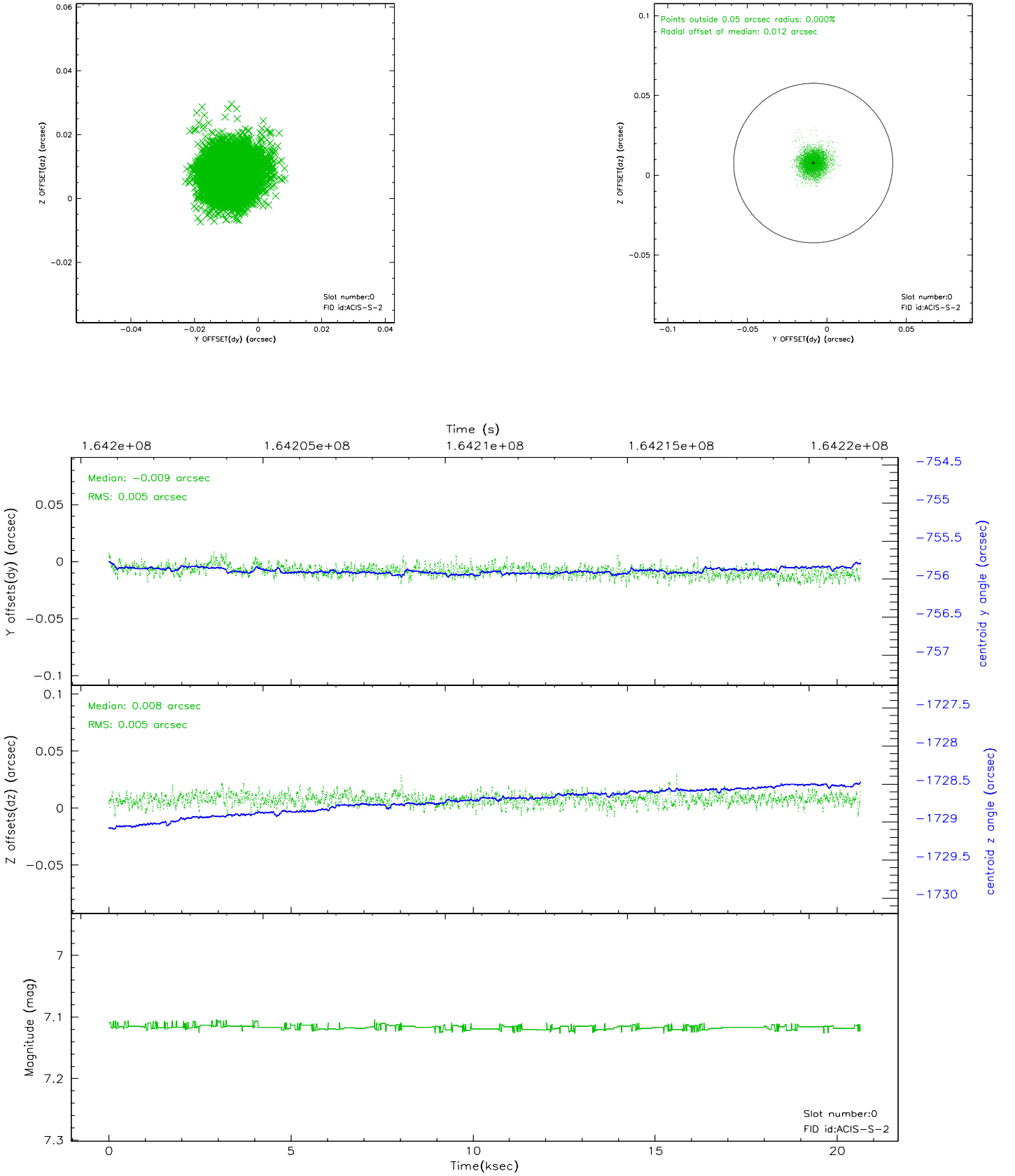


2.4.5 Slot 7

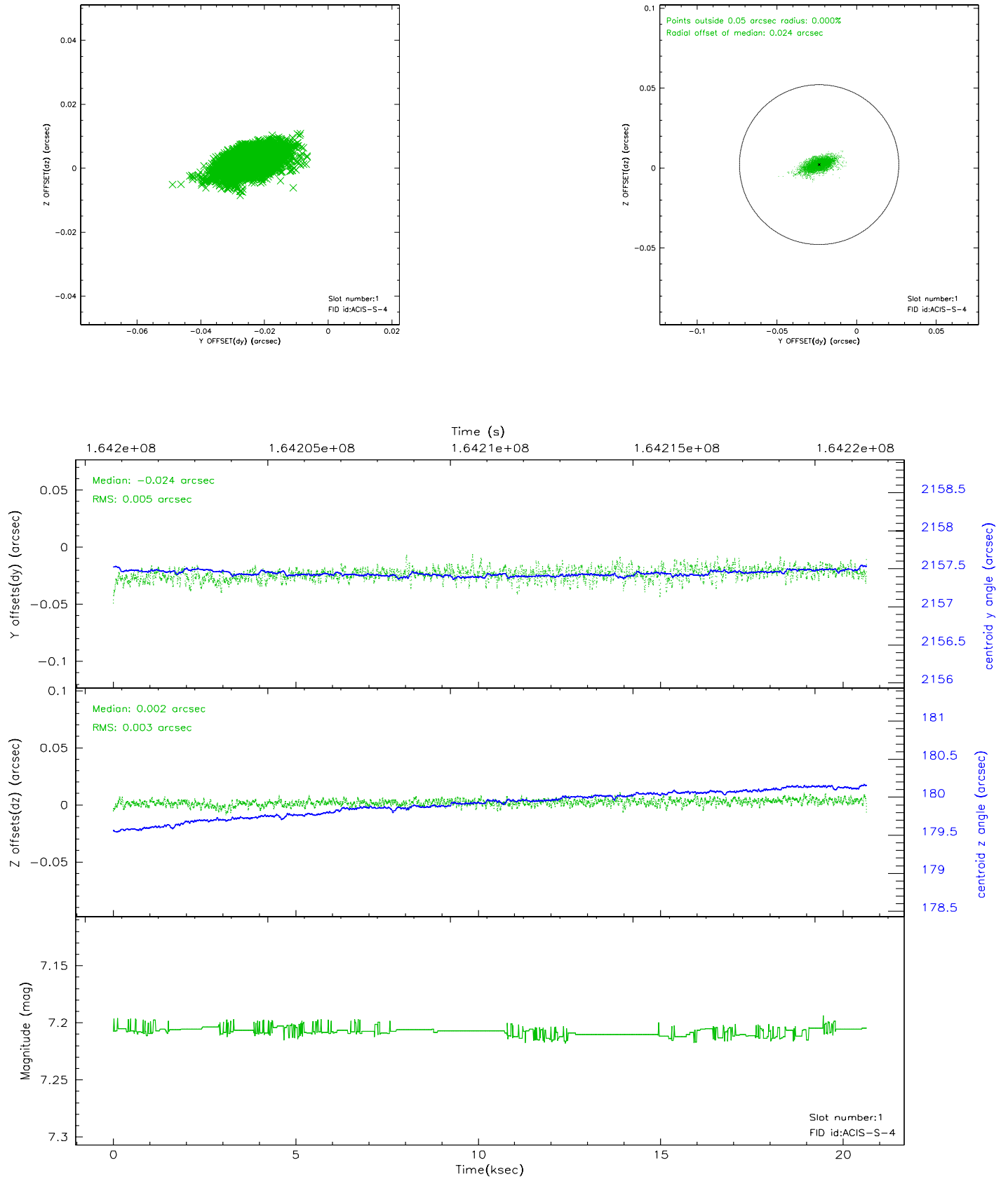


2.5 FID Slots

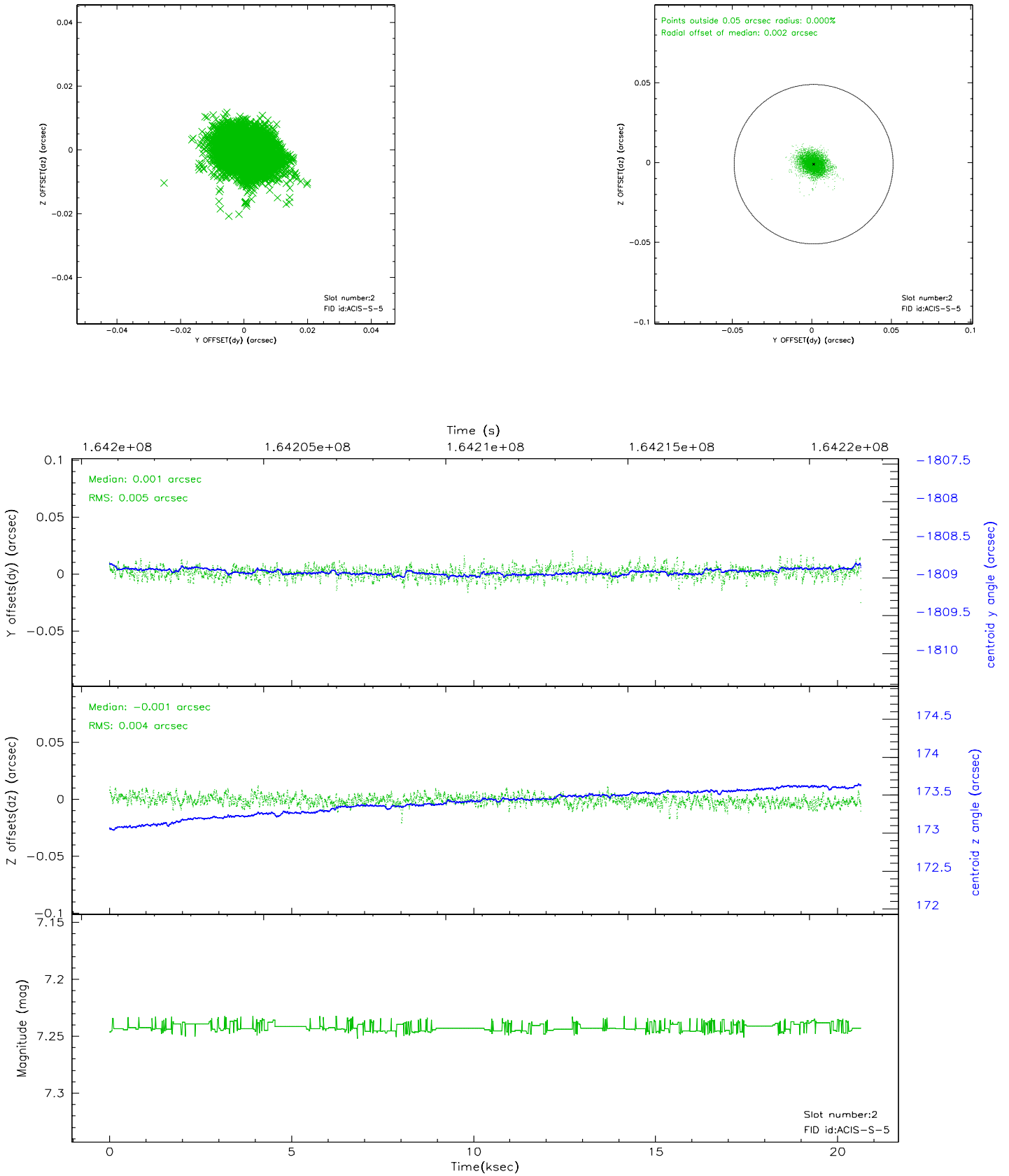
2.5.1 Slot 0



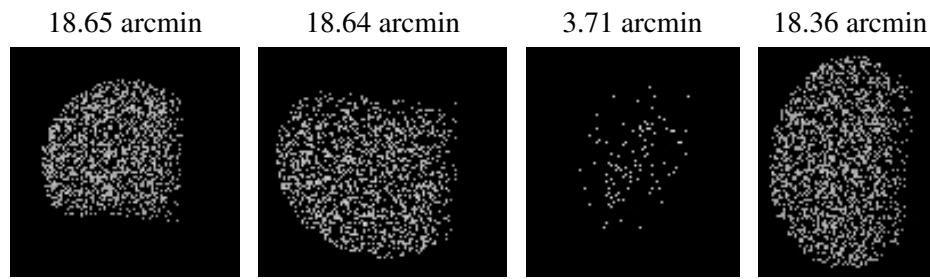
2.5.2 Slot 1



2.5.3 Slot 2



3 Point Sources



A Summary

A.1 Status

V&V Scientist	Beth Sundheim
V&V Date (YYYY-MM-DD)	2006.07.24
V&V Edition	1
V&V Disposition and Status	OK
V&V Charge Time	20.106

A.2 Comments