

V&V Reference Report

L2 ASCDS Version : 7.6.8

Observation 4160 - L2 Version 001
Chandra X-Ray Center

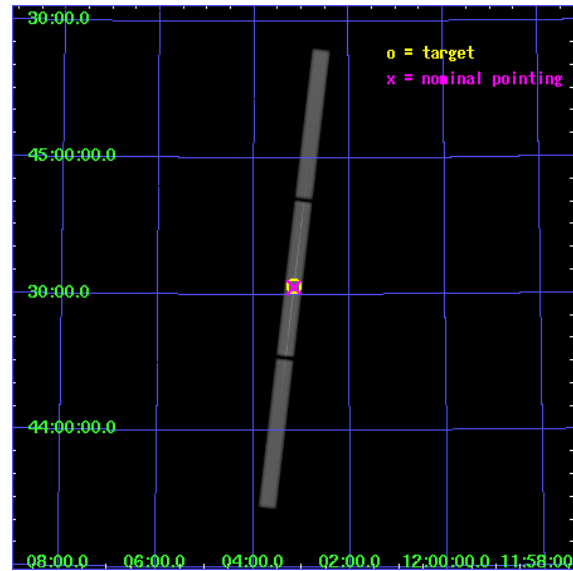
L2 Processing Date : Jul 14 2006

Contents

1	Front	2
2	OBI	3
2.1	OBI	3
2.1.1	Images	3
2.1.2	Parameters	4
2.1.3	Events	4
2.2	Compared Parameters	5
2.3	Aspect	6
2.4	Star Slots	9
2.4.1	Slot 3	9
2.4.2	Slot 4	10
2.4.3	Slot 5	11
2.4.4	Slot 6	12
2.4.5	Slot 7	13
2.5	FID Slots	14
2.5.1	Slot 0	14
2.5.2	Slot 1	15
2.5.3	Slot 2	16
3	Gratings	17
3.1	LETG Arm	17
A	Summary	19
A.1	Status	19
A.2	Comments	19

1 Front

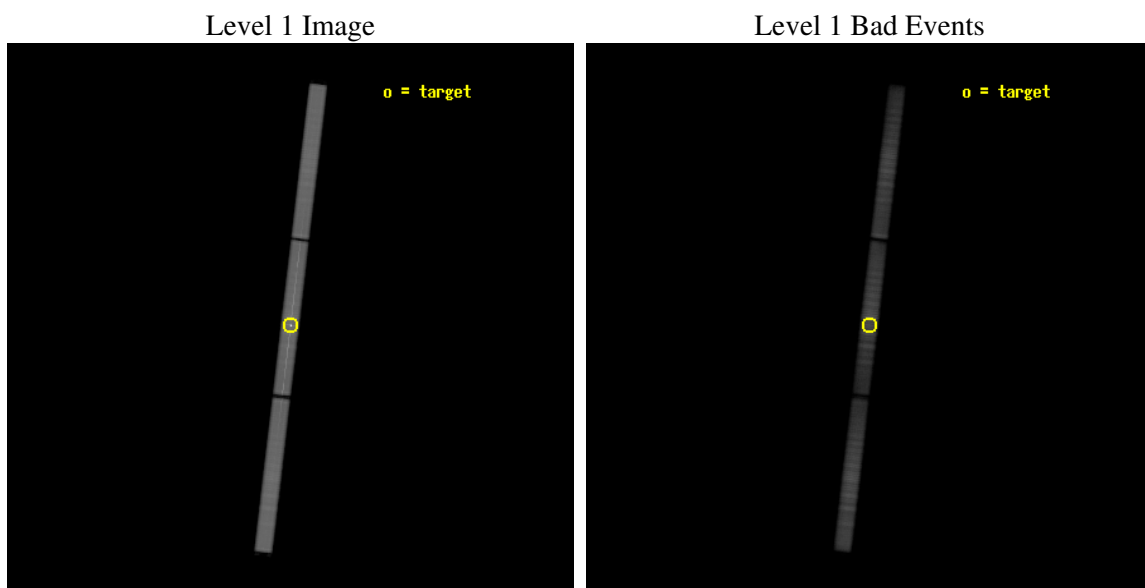
seq_num	700839
obs_id	4160
title	SOFT X-RAY EMISSION AND ABSORPTION IN NGC 4051
observer	Dr Mariano Mendez
object	NGC 4051
ra_targ	180.79
dec_targ	44.531444
ra_nom	180.79061295291
dec_nom	44.526824866789
roll_nom	276.74649072973
revision	2
ontime	94983.935300142
livetime	94446.240079048
l2events	4041651



2 OBI

2.1 OBI

2.1.1 Images



2.1.2 Parameters

obi_num	0
ascdsver	7.6.8
caldsver	3.2.2
date	2006-07-14T18:42:51
revision	2

sched_exp_time	95000.000000
ontime	95061.579053462
l1events	6015571

2.1.3 Events

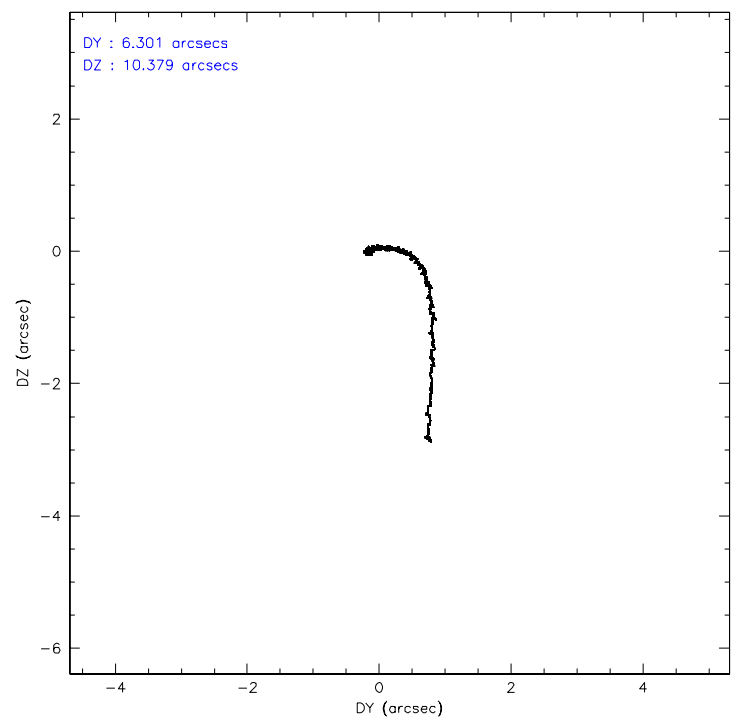
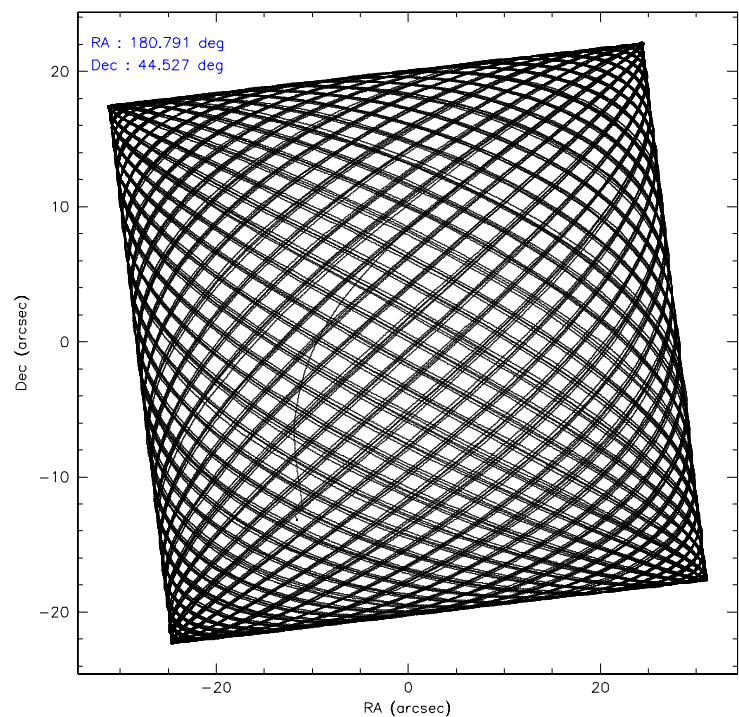
Level 1 Events

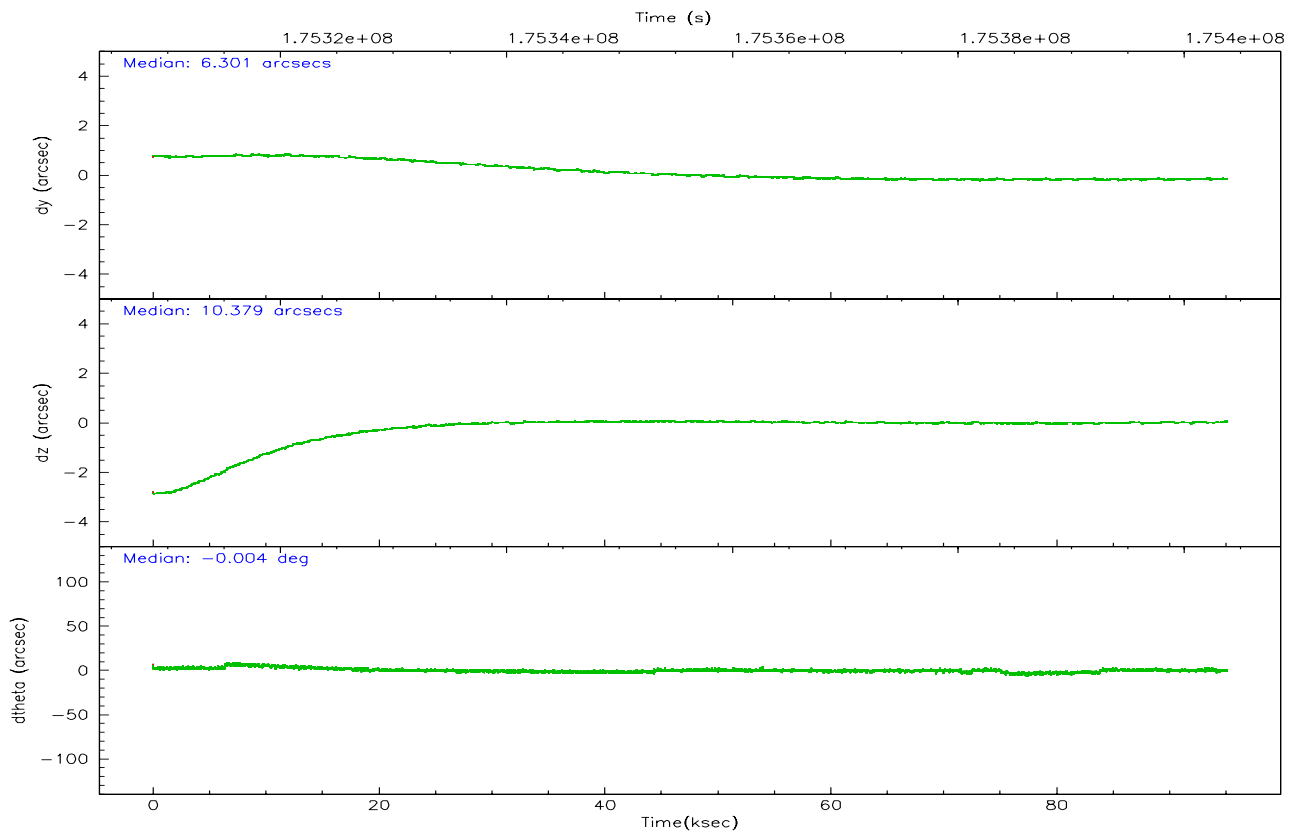
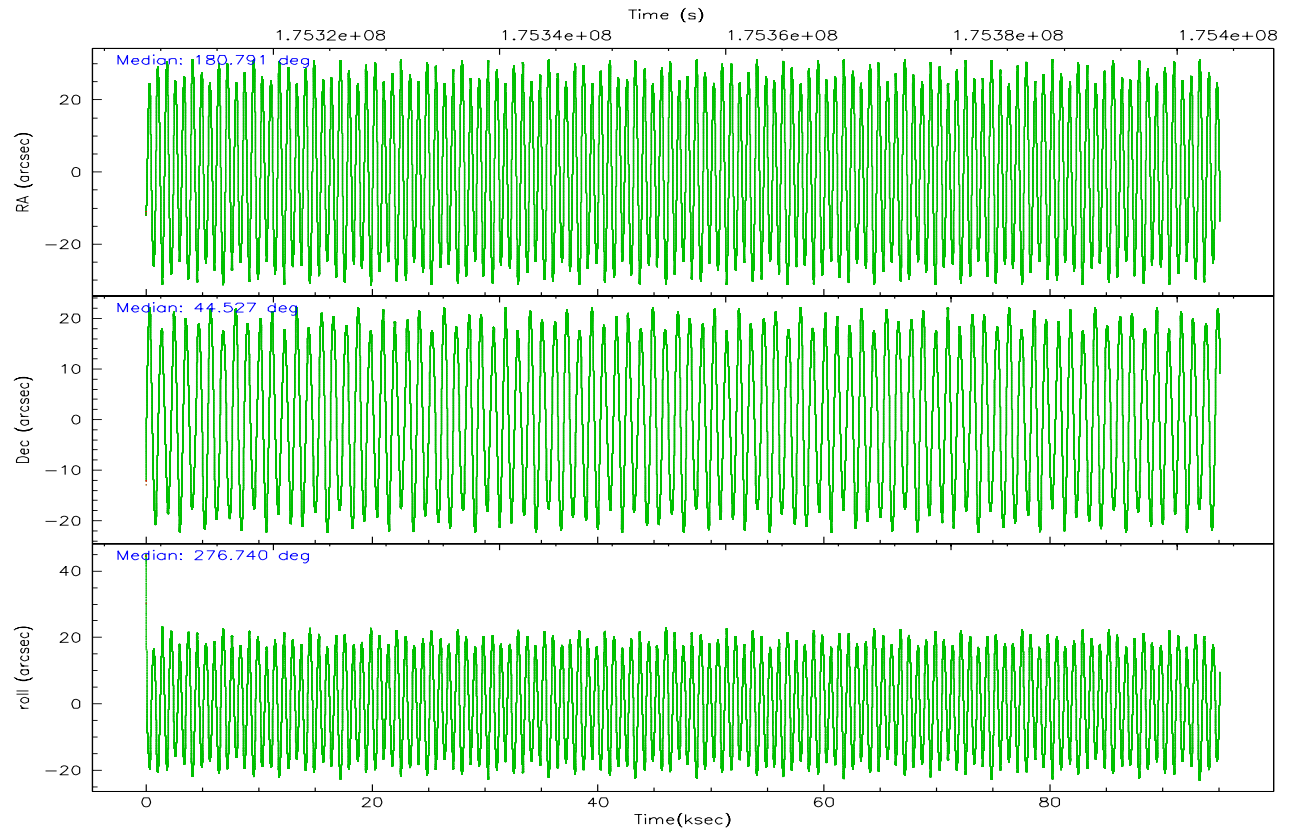
	segment 1	segment 2	segment 3
level 1 events	1946411	2108581	1960579
rejected events	426861	464680	518842
rejected %	21%	22%	26%

2.2 Compared Parameters

Parameter	Planned	Actual	Parameter	Planned	Actual
Instrument	HRC	HRC	Obspar format version number	6	6
Detector	HRC-S	HRC-S	Obspar file type	PREDICTED	ACTUAL
Grating	LETG	LETG	Obspar update status	NONE	UPDATED
Data mode	OBSERVING	OBSERVING			
Observation mode	POINTING	POINTING			
Pointing RA	180.765011	180.7906129529087			
Pointing Dec	44.548824	44.52682486678933			
Pointing Roll	276.697103	276.7464907297293			
SIM focus pos (mm)	-1.429586	-1.428180813131781			
SIM defocus (mm)	0.1037507710433287	0.1051558262725154			
SIM translation stage pos (mm)	250.455976	250.466033080201			
SIM translation stage offset (mm)	0	-0.01005468664627074			
Observation start time	175308815.184000	175307655.87042			
Observation start date	2003-07-23T00:52:31	2003-07-23T00:34:15			
Observation end time	175403815.184000	175404283.64954			
Observation end date	2003-07-24T03:15:51	2003-07-24T03:24:43			

2.3 Aspect



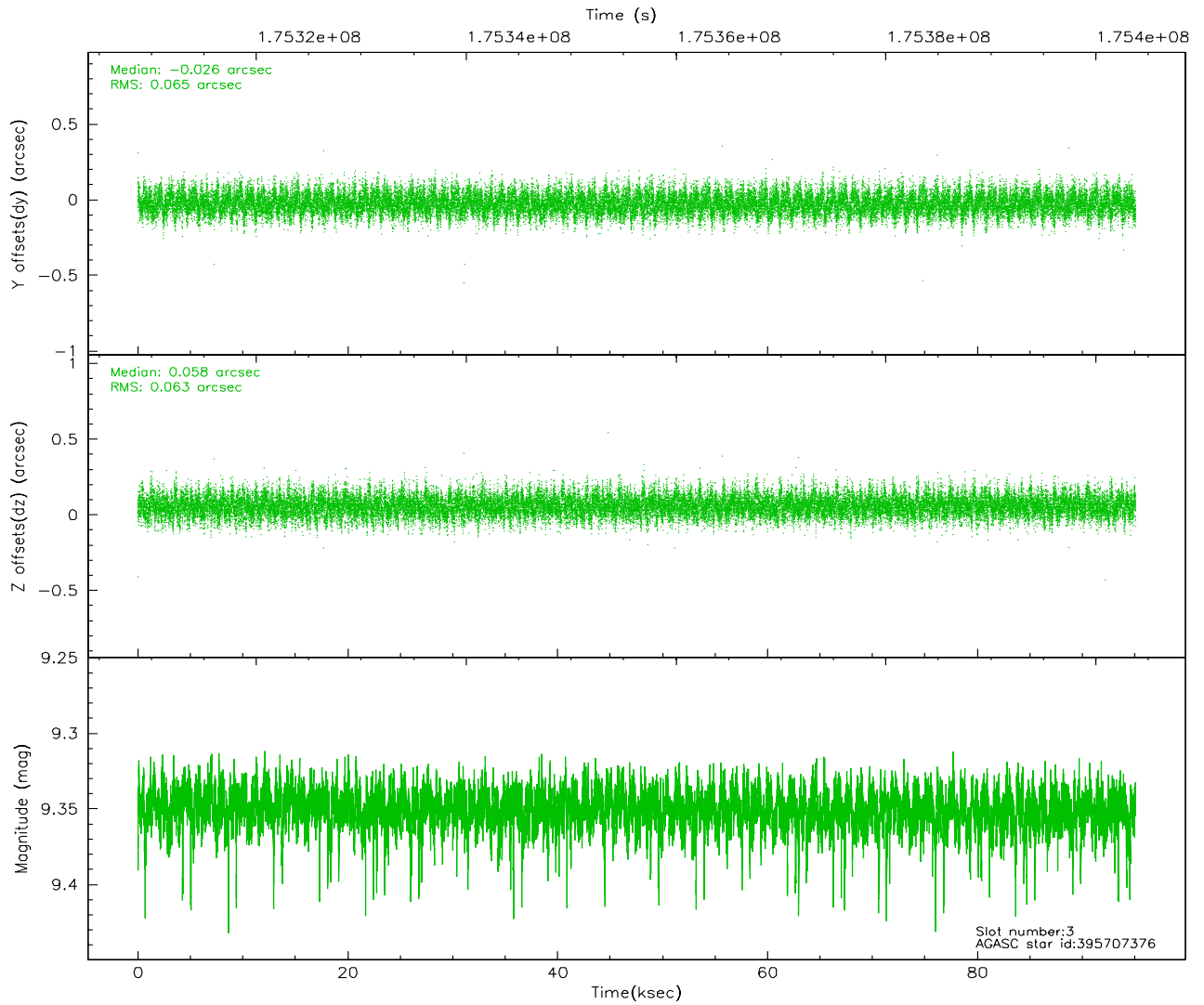
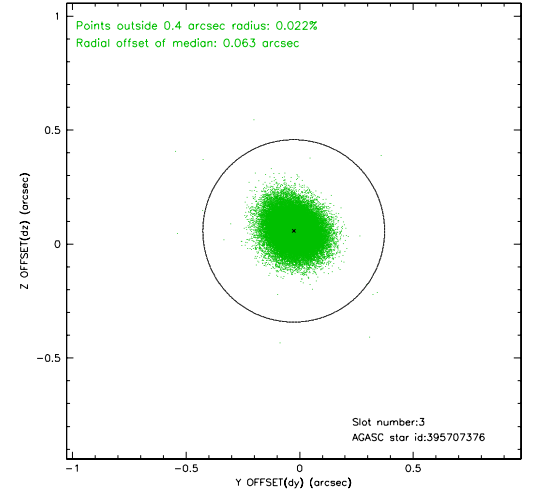
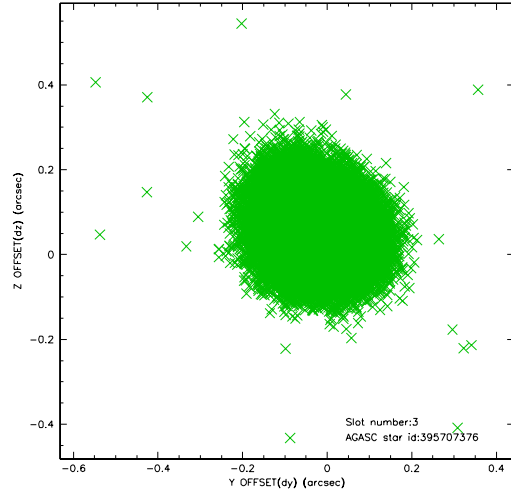


Slot Statistics

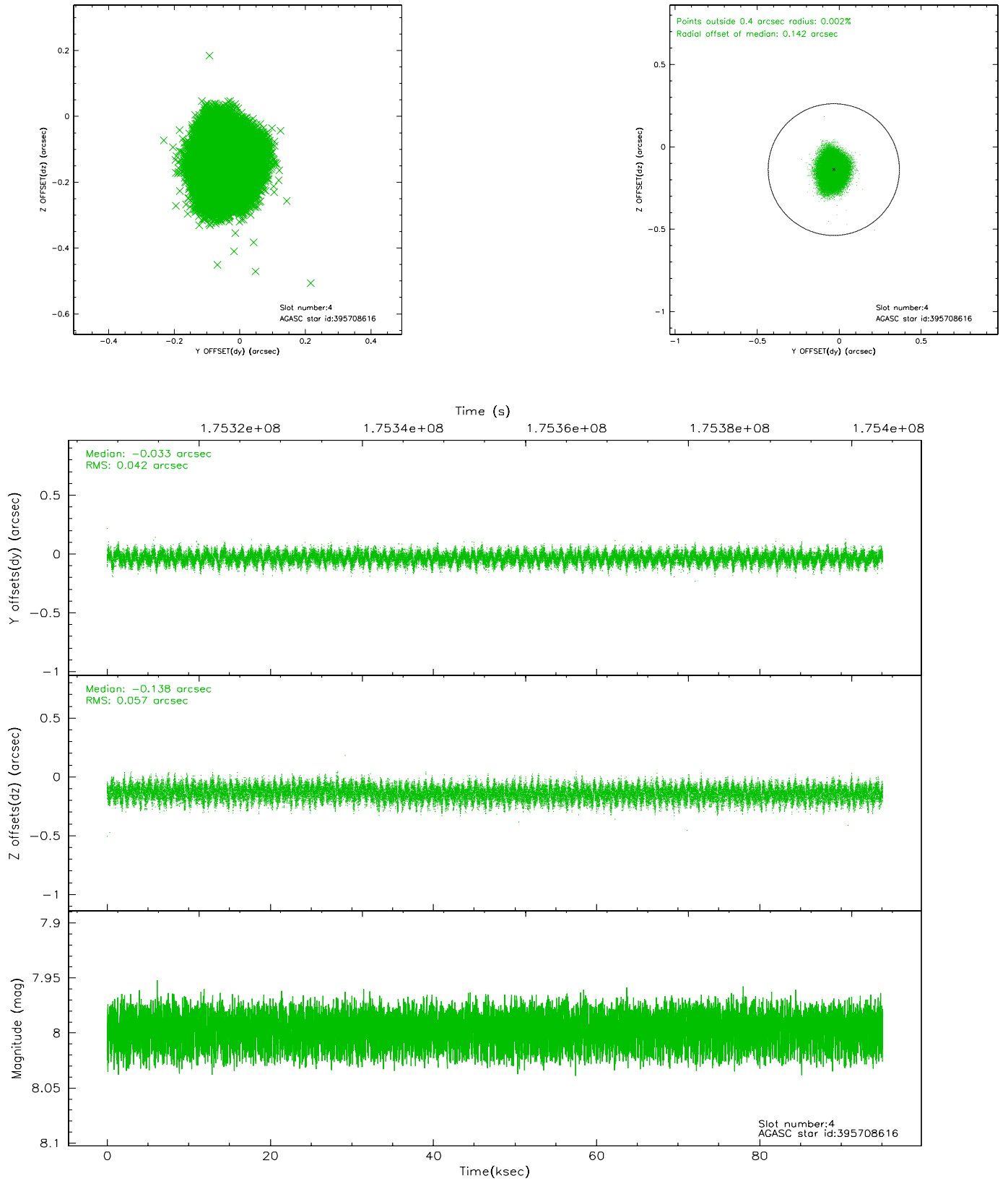
slot	status	id	mag	n_pts	med_dy	med_dz	dr1	dr2	ra	dec	mean_y	mean_z
0	FID	HRC-S-1	7.00	23195	0.097	-0.115	0.008	0.015	0.000000	0.000000	-1160.64	-458.74
1	FID	HRC-S-2	6.99	23195	0.143	-0.129	0.020	0.044	0.000000	0.000000	1239.04	-451.37
2	FID	HRC-S-4	6.96	23195	0.163	-0.059	0.020	0.037	0.000000	0.000000	1237.73	573.43
3	GUIDE	395707376	9.35	46369	-0.026	0.058	0.097	0.157	180.967983	44.858789	-1048.03	644.63
4	GUIDE	395708616	8.00	46384	-0.033	-0.138	0.075	0.121	180.101872	44.630343	-495.92	-1652.33
5	GUIDE	395708696	8.88	46382	-0.000	-0.093	0.092	0.153	180.383726	44.624291	-385.51	-938.37
6	GUIDE	395709608	8.36	46386	-0.014	0.040	0.068	0.114	181.055130	44.450389	437.91	699.50
7	GUIDE	395710032	8.80	46375	0.077	0.136	0.091	0.142	181.512910	44.376001	833.94	1840.14

2.4 Star Slots

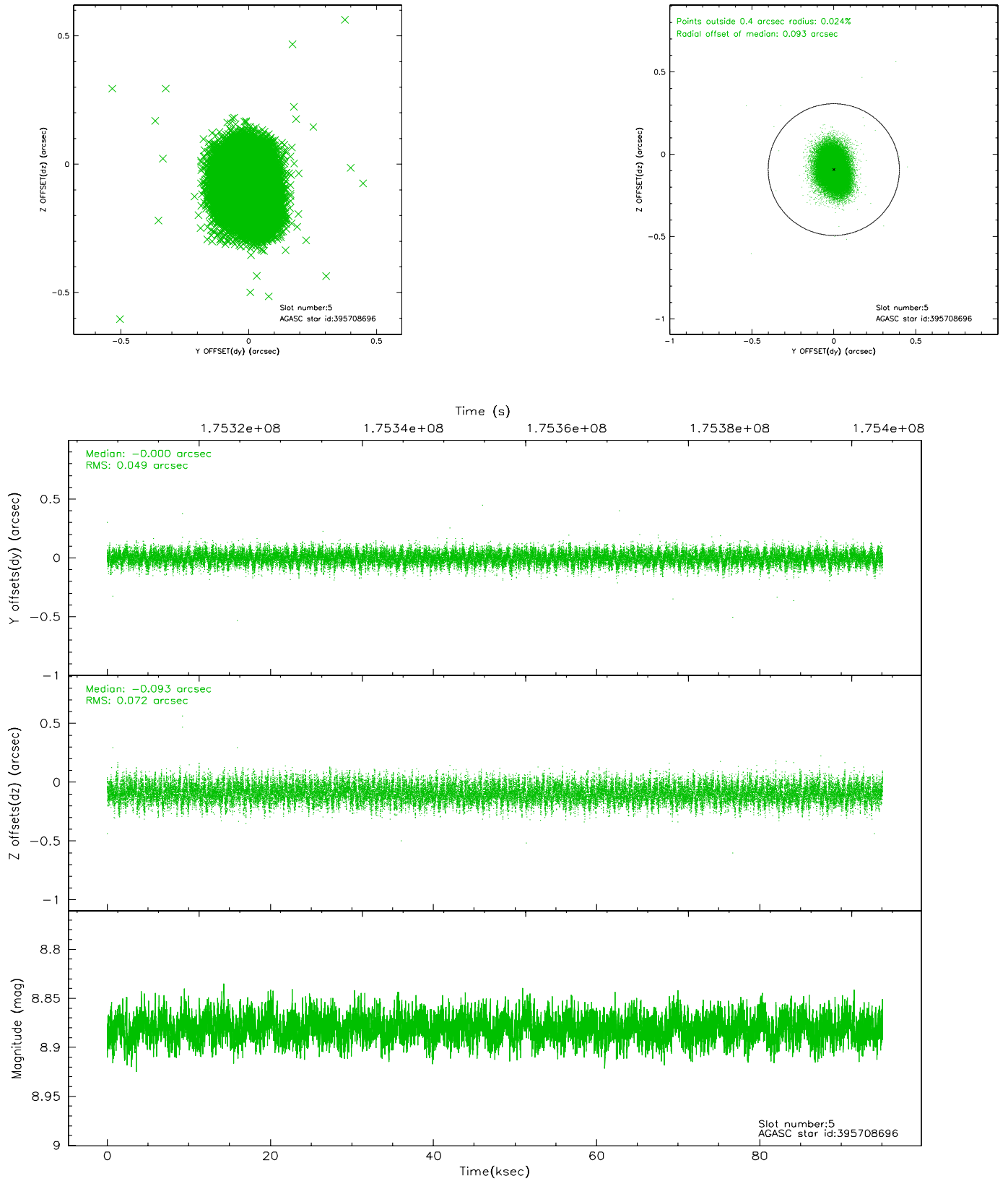
2.4.1 Slot 3



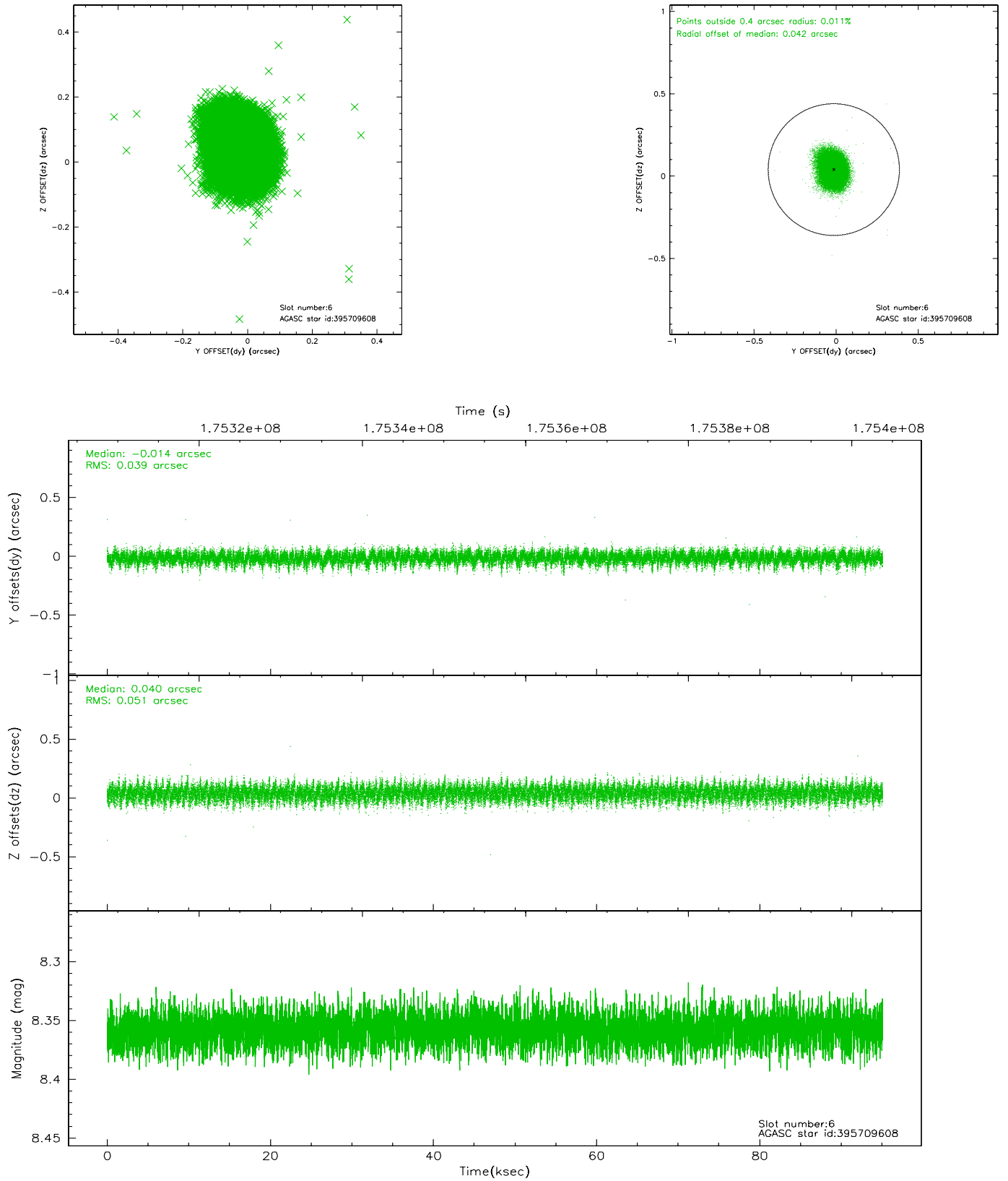
2.4.2 Slot 4



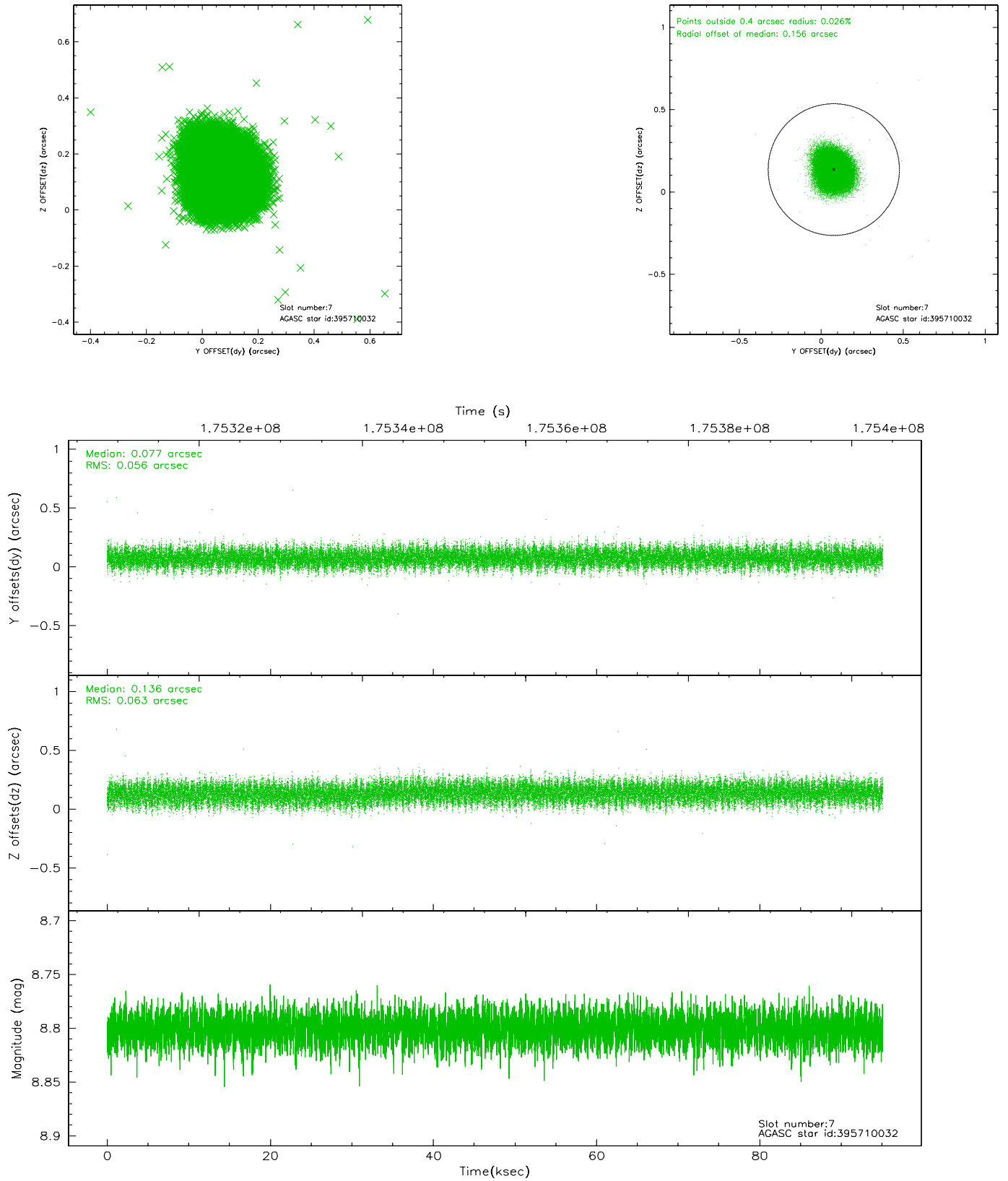
2.4.3 Slot 5



2.4.4 Slot 6

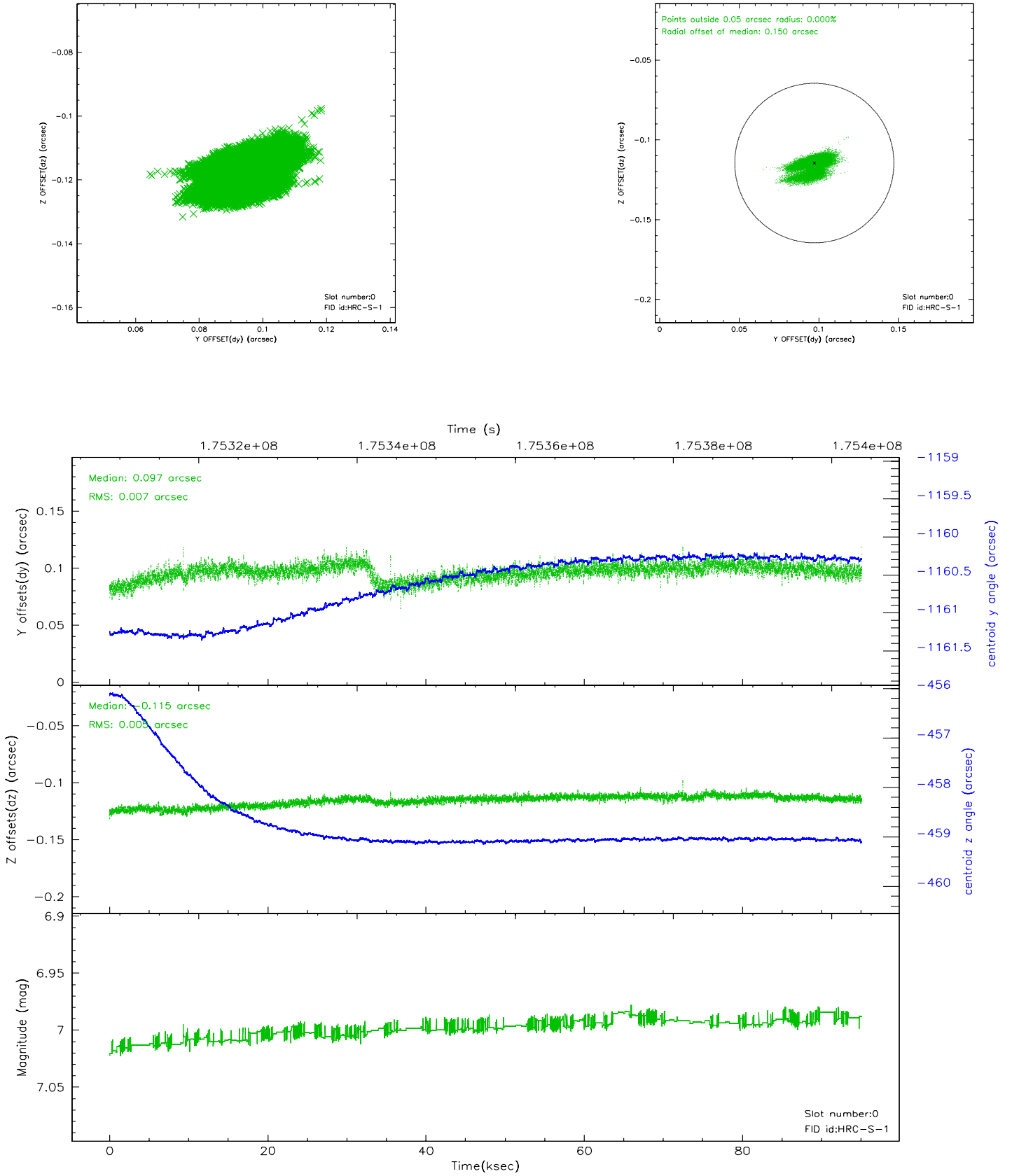


2.4.5 Slot 7

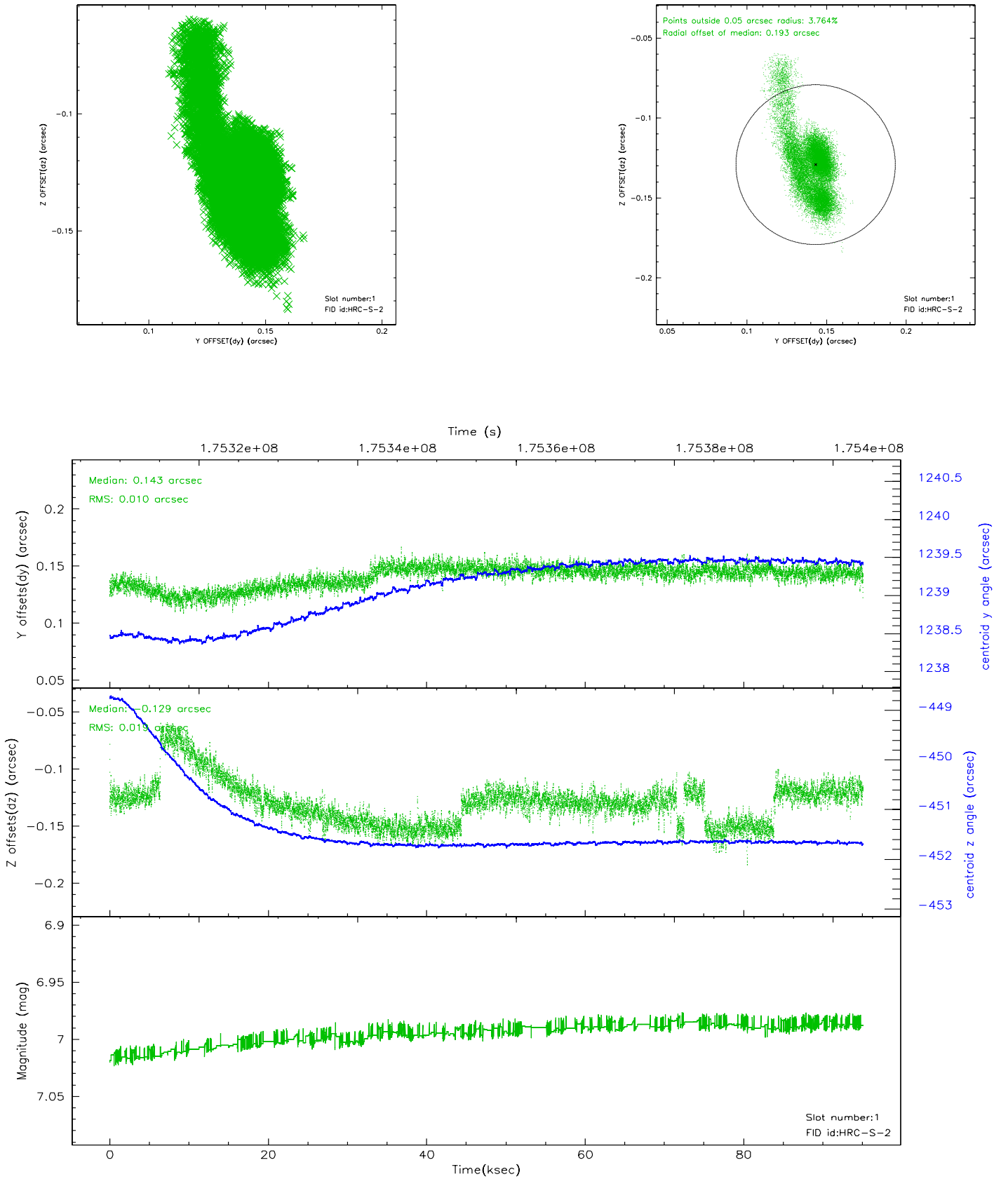


2.5 FID Slots

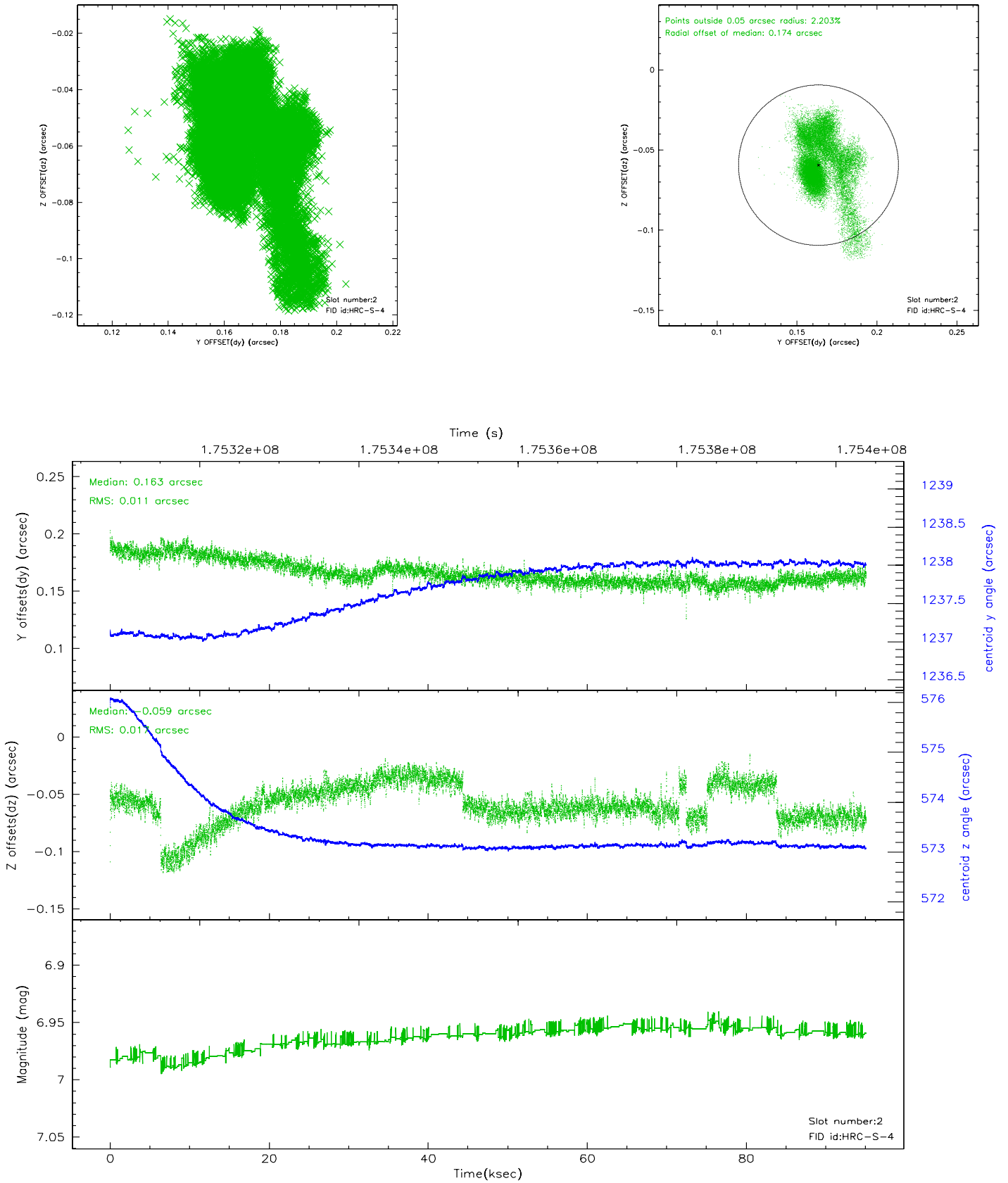
2.5.1 Slot 0



2.5.2 Slot 1

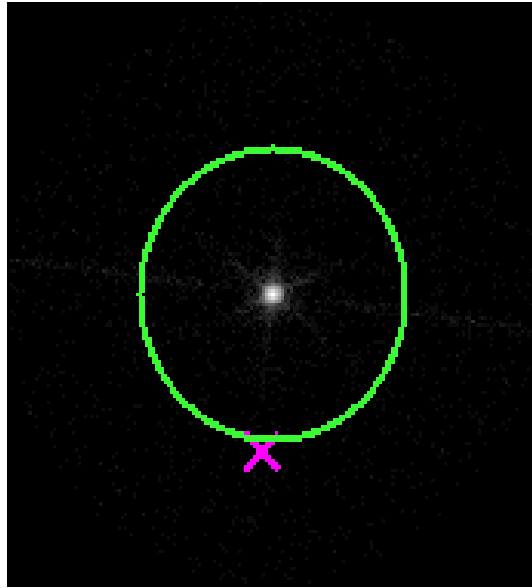


2.5.3 Slot 2



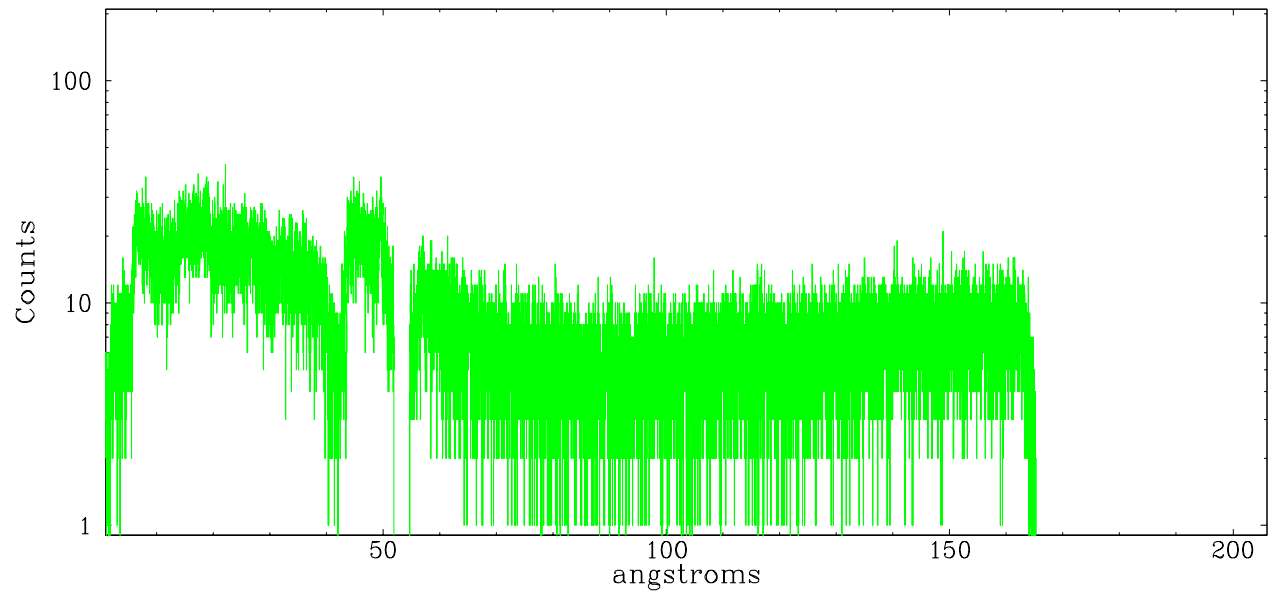
3 Gratings

3.1 LETG Arm

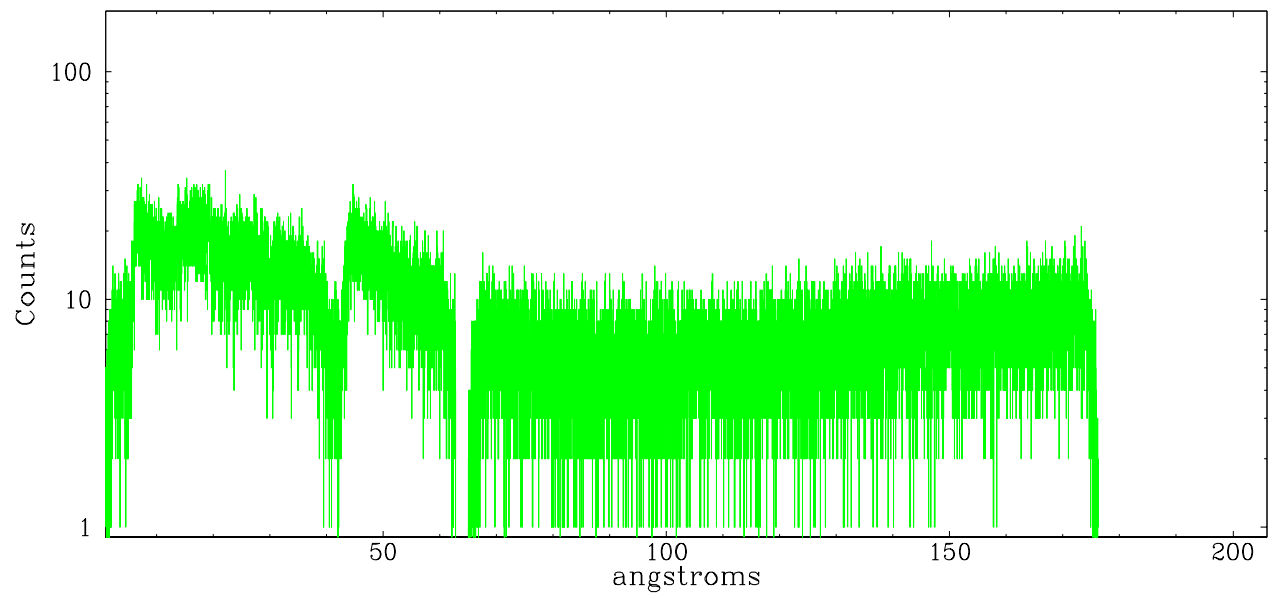


LETG Zero Order

leg order -1



leg order +1



A Summary

A.1 Status

V&V Scientist	Jen Lauer
V&V Date (YYYY-MM-DD)	2006.07.17
V&V Edition	1
V&V Disposition and Status	OK
V&V Charge Time	94.983

A.2 Comments