

V&V Reference Report

L2 ASCDS Version : 8.4.5

Observation 4153 - L2 Version 3
Chandra X-Ray Center

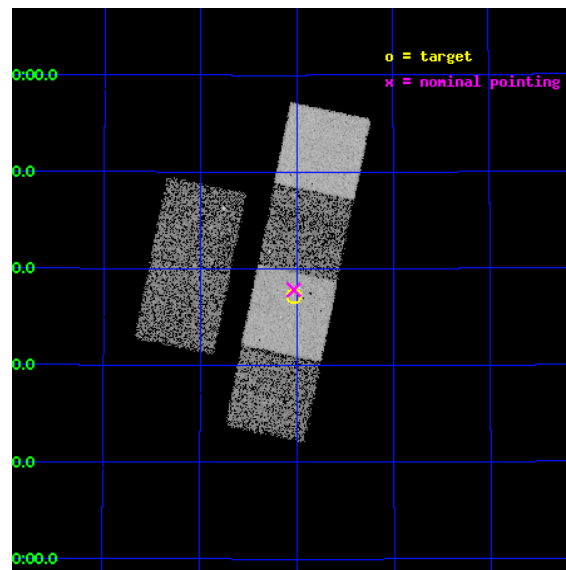
L2 Processing Date : Oct 20 2012

Contents

1	Front	2
2	OBI	3
2.1	OBI	3
2.1.1	Images	3
2.1.2	Bias	3
2.1.3	Parameters	4
2.1.4	Events	4
2.2	Compared Parameters	5
2.3	Aspect	6
2.4	Star Slots	9
2.4.1	Slot 3	9
2.4.2	Slot 4	10
2.4.3	Slot 5	11
2.4.4	Slot 6	12
2.4.5	Slot 7	13
2.5	FID Slots	14
2.5.1	Slot 0	14
2.5.2	Slot 1	15
2.5.3	Slot 2	16
A	Summary	17
A.1	Status	17
A.2	Comments	17

1 Front

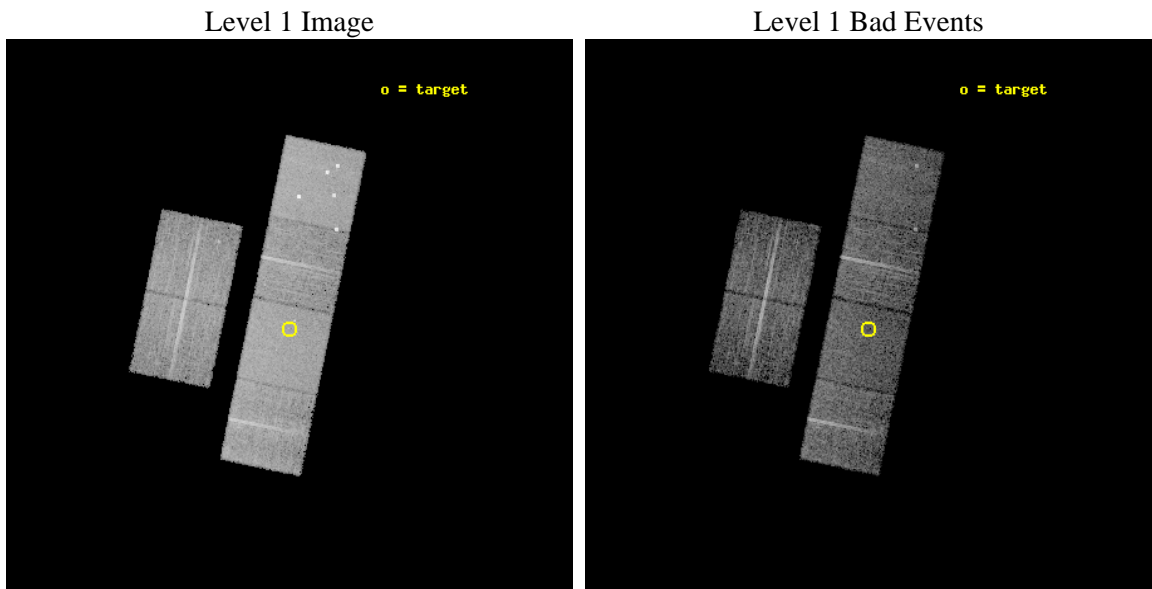
seq_num	700832	Sequence number
obs_id	4153	Observation id
title	X-RAY TRACE OF THE EARLY RISE OF THE QUASAR POPULATION	Proposal ti
observer	Dr. Takamitsu Miyaji	Principal investigator
object	PC 1015+4752	Source name
dtcycle	0	
cycle	P	events from which exps? Prim/Second/Both
ra_targ	154.757917	Observer's specified target RA [deg]
dec_targ	47.620722	Observer's specified target Dec [deg]
ra_nom	154.75757648764	Nominal RA [deg]
dec_nom	47.630418211561	Nominal Dec [deg]
roll_nom	101.63235126067	Nominal Roll [deg]
revision	3	Processing version of data
ontime	8083.1999698877	Sum of GTIs [s]
livetime	7980.8456247503	Livetime [s]
ontime2	8083.1999698877	Sum of GTIs [s]
ontime3	8083.1999698877	Sum of GTIs [s]
ontime5	8083.1999698877	Sum of GTIs [s]
ontime6	8079.9589896202	Sum of GTIs [s]
ontime7	8083.1999698877	Sum of GTIs [s]
ontime8	8079.9589497745	Sum of GTIs [s]
l2events	81443	Number of level 2 events



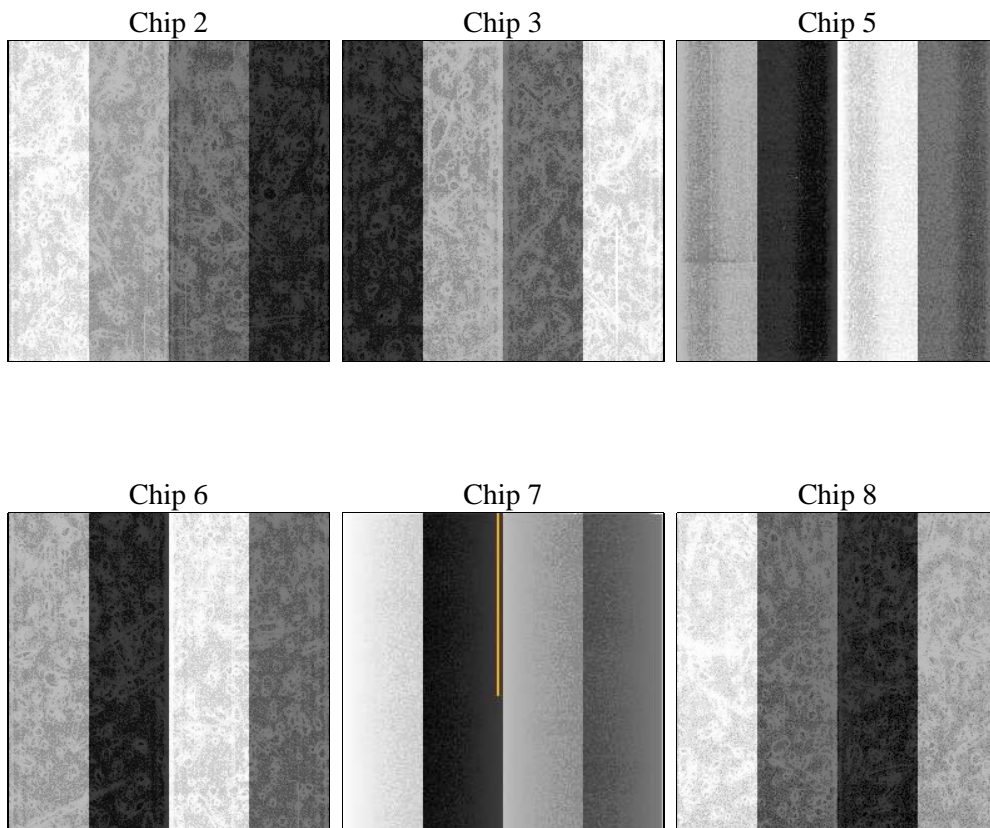
2 OBI

2.1 OBI

2.1.1 Images



2.1.2 Bias



2.1.3 Parameters

obi_num	1	Obi number	sched_exp_time	8000.000000	[s] Scheduled observation exposure time
ascdsver	8.4.5	Processing system revision	ontime	8083.1999698877	Sum of GTIs [s]
caldsver	4.5.2	 	ontime2	8083.1999698877	Sum of GTIs [s]
date	2012-10-20T16:43:43	Date and time of file creation	ontime3	8083.1999698877	Sum of GTIs [s]
revision	3	Processing version of data	ontime5	8083.1999698877	Sum of GTIs [s]
			ontime6	8079.9589896202	Sum of GTIs [s]
			ontime7	8083.1999698877	Sum of GTIs [s]
			ontime8	8079.9589497745	Sum of GTIs [s]
			l1events	365198	Number of level 1 events

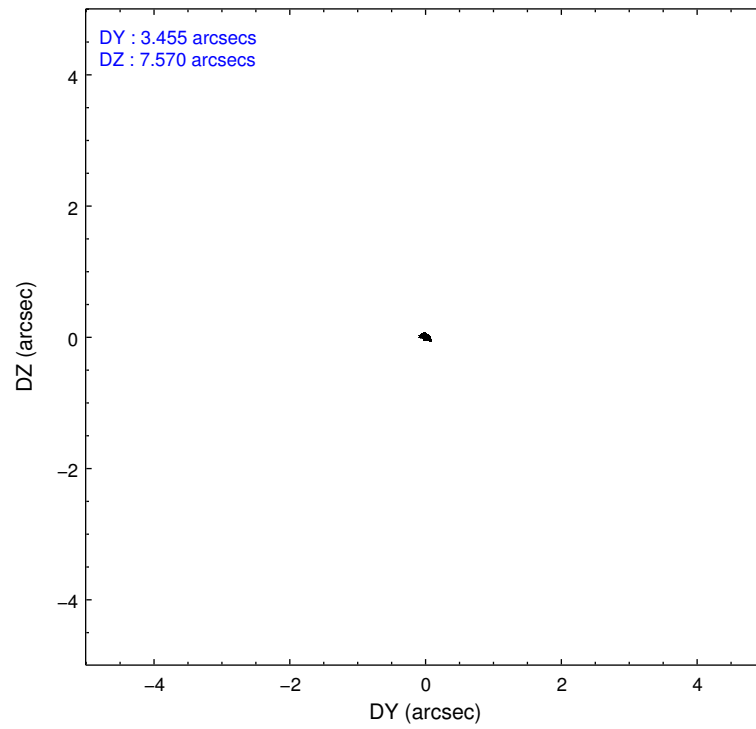
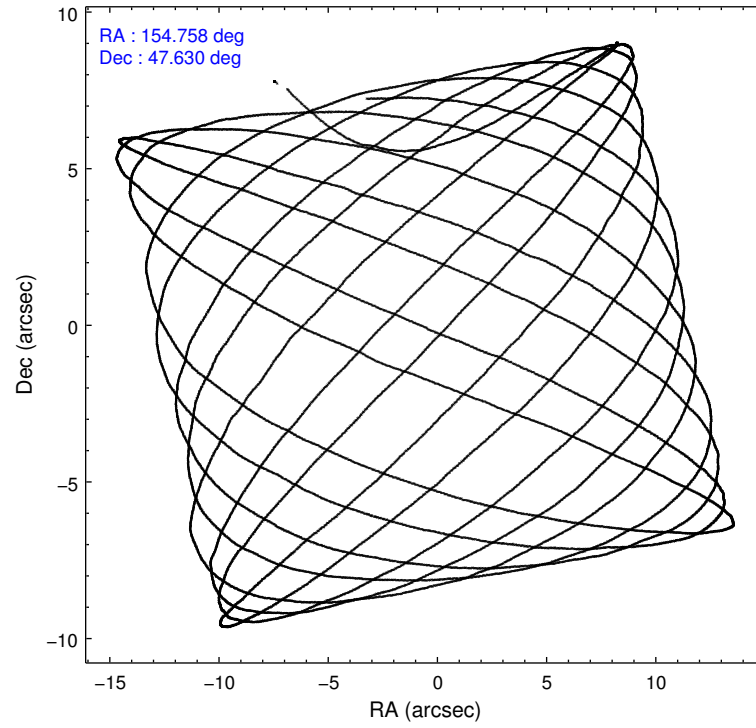
2.1.4 Events

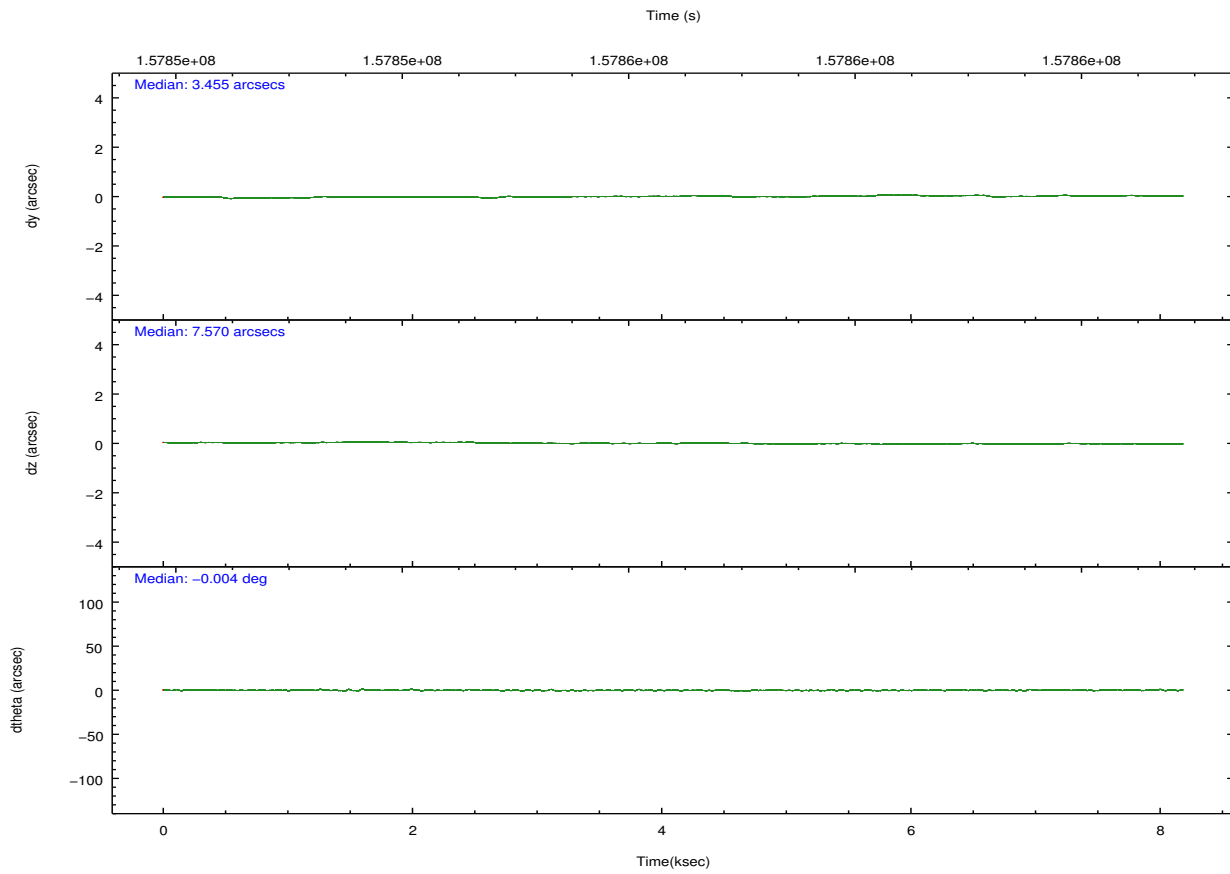
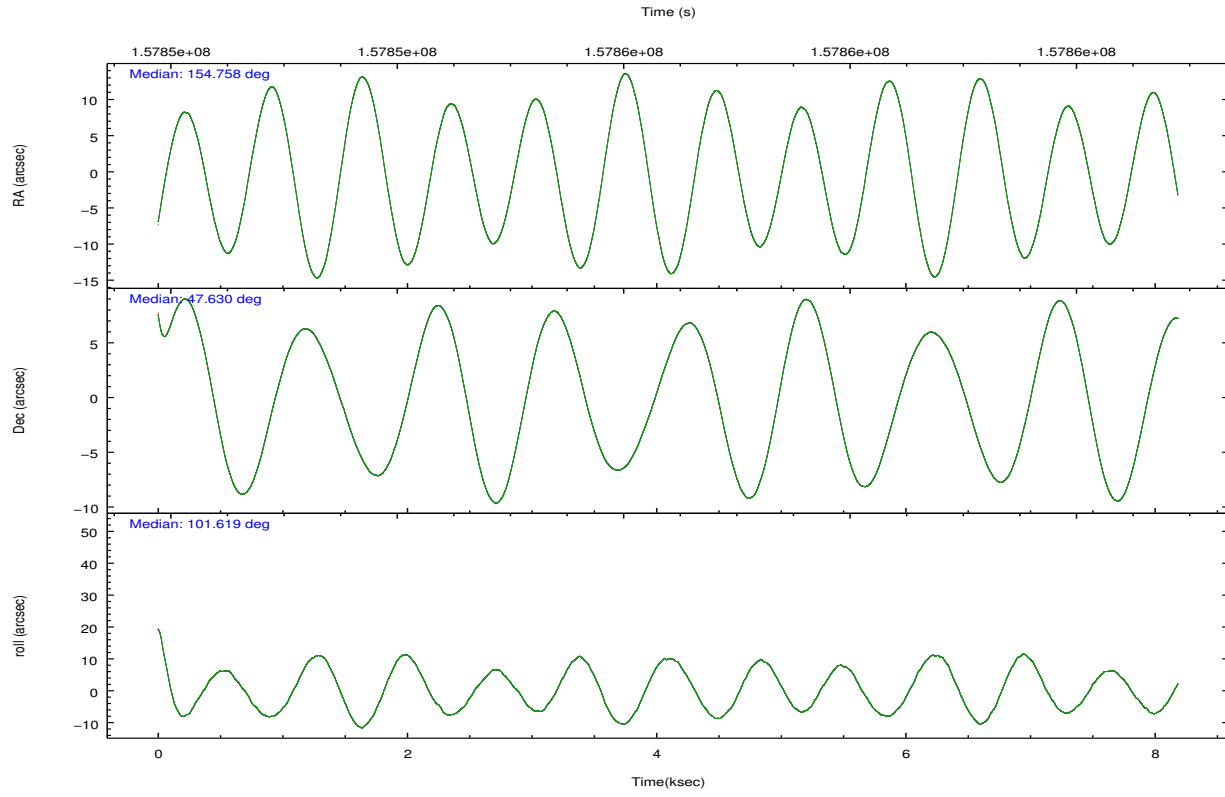
	ccd 2	ccd 3	ccd 5	ccd 6	ccd 7	ccd 8		ccd 2	ccd 3	ccd 5	ccd 6	ccd 7	ccd 8
level 1 events	52001	48391	81012	52416	68323	63055	grade 0 events	2765	2576	7929	2543	2809	4254
rejected events	45848	42515	41506	46216	39926	49900		5%	5%	9%	4%	4%	6%
rejected %	88%	87%	51%	88%	58%	79%	grade 1 events	33	30	276	28	56	32
								0%	0%	0%	0%	0%	0%
							grade 2 events	1256	1085	10711	1232	5635	2658
								2%	2%	13%	2%	8%	4%
							grade 3 events	548	623	1378	594	2525	1549
								1%	1%	1%	1%	3%	2%
							grade 4 events	570	540	1420	612	2511	1444
								1%	1%	1%	1%	3%	2%
							grade 5 events	1977	2260	5622	2289	6579	2862
								3%	4%	6%	4%	9%	4%
							grade 6 events	1019	1054	18099	1225	14932	3259
								1%	2%	22%	2%	21%	5%
							grade 7 events	43833	40223	35577	43893	33276	46997
								84%	83%	43%	83%	48%	74%

2.2 Compared Parameters

Parameter	Planned	Actual	Parameter	Planned	Actual
Instrument	ACIS	ACIS	Obspar format version number	7	7
Detector	ACIS-235678	ACIS-235678	Obspar file type	PREDICTED	ACTUAL
Grating	NONE	NONE	Obspar update status	NONE	UPDATED
Data mode	VFAINT	VFAINT	Number of optional ACIS chips dropped	0	0
Observation mode	POINTING	POINTING	On-chip summing requested	N	N
[deg] Pointing RA	154.784772	154.7575764876365	Subarray requested	NONE	NONE
[deg] Pointing Dec	47.610278	47.63041821156104	Alternating exposures requested	N	N
[deg] Pointing Roll	101.455614	101.632351260668	[s] Primary exposure time	0.000000	3.2
[mm] SIM focus pos	-0.684267	-0.6828225247311905			
[mm] SIM defocus	0	0.001444936568705701			
[mm] SIM translation stage pos	-190.132523	-190.1400660498719			
[mm] SIM translation stage offset	0	0.00754346686406393			
[s] Observation start time (MET)	157852487.184000	157851465.40834			
Observation start date	2003-01-01T23:53:43	2003-01-01T23:37:45			
[s] Observation end time (MET)	157860487.184000	157861272.09625			
Observation end date	2003-01-02T02:07:03	2003-01-02T02:21:12			
Read mode	TIMED	TIMED			

2.3 Aspect



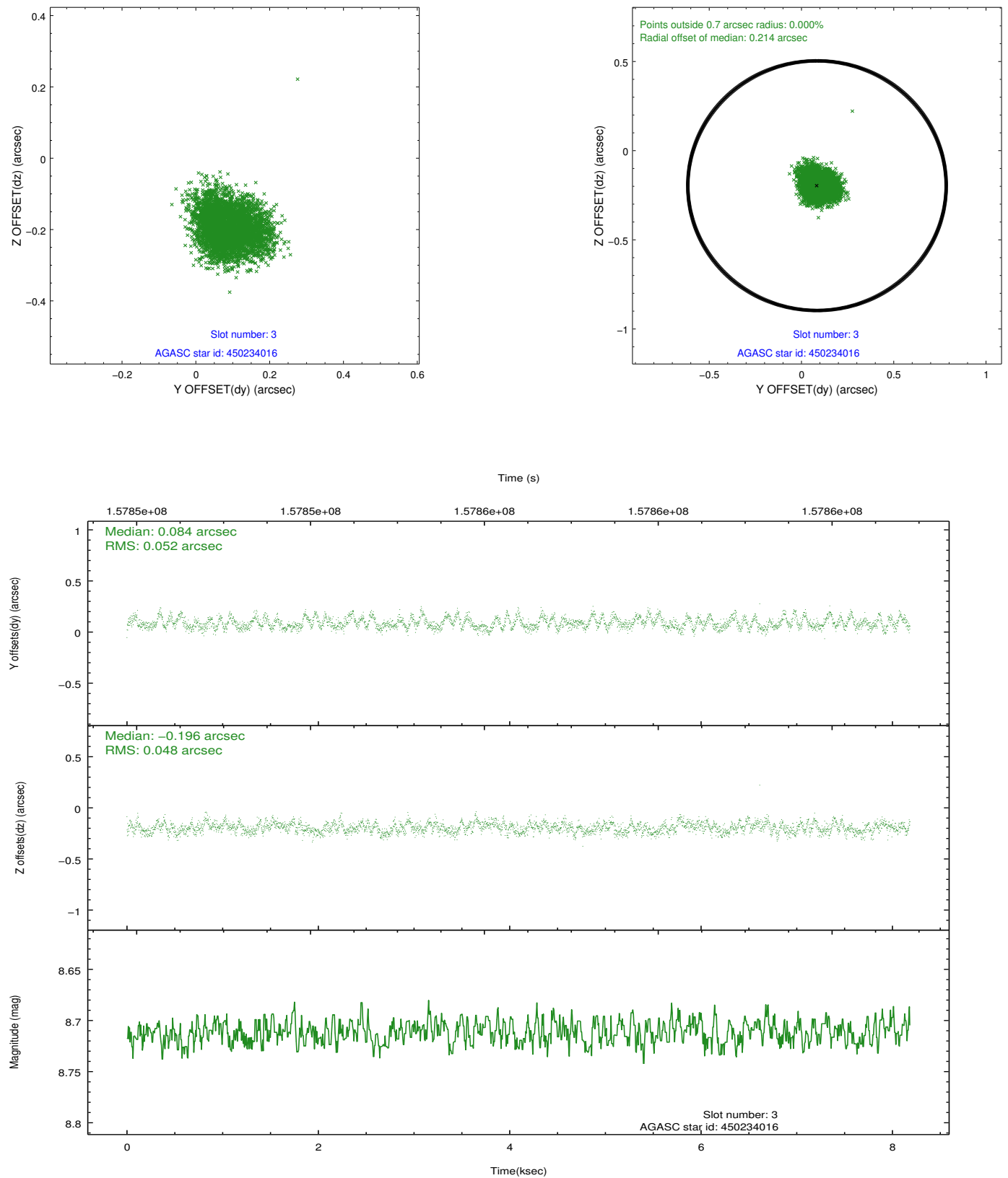


Slot Statistics

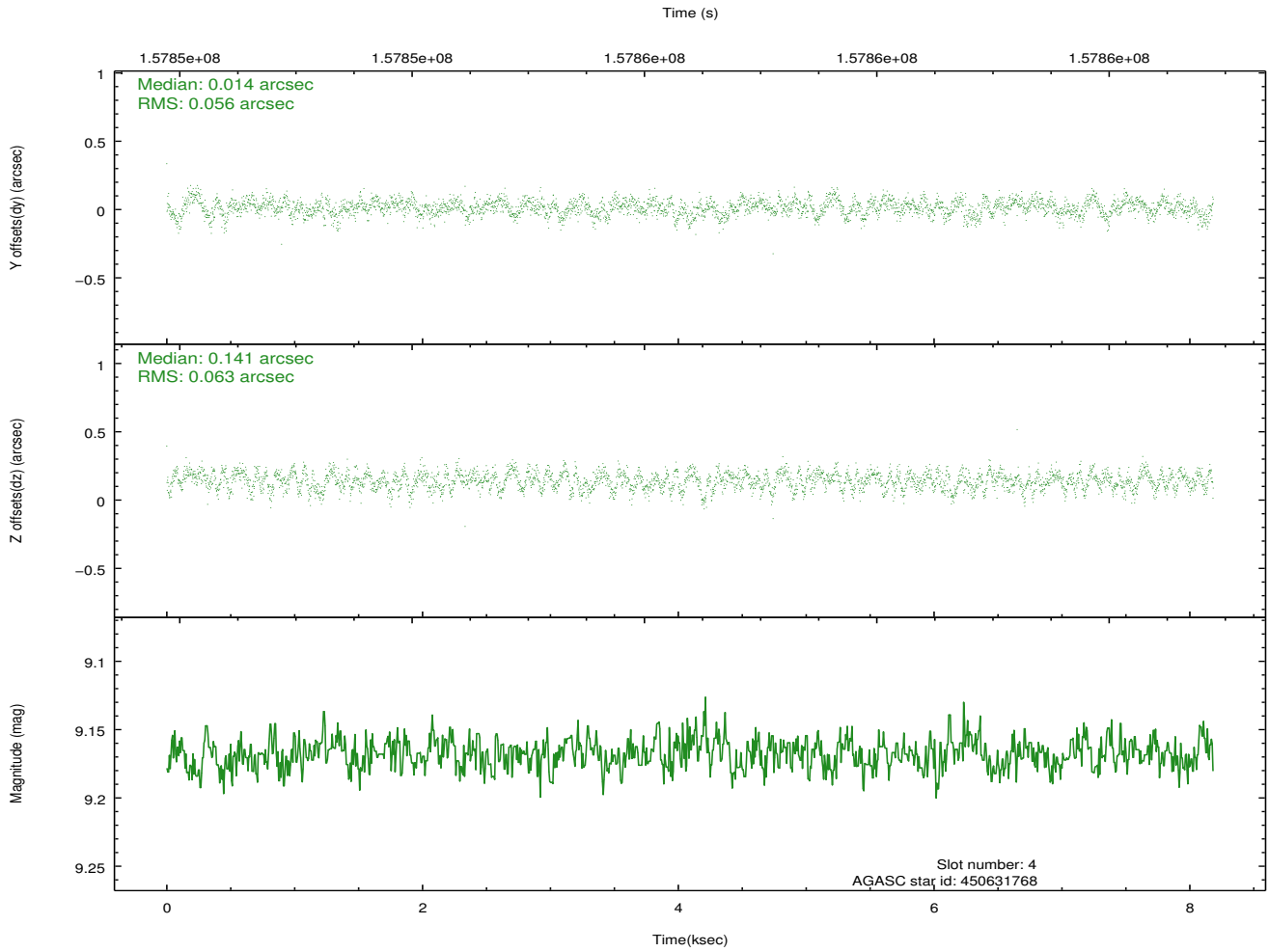
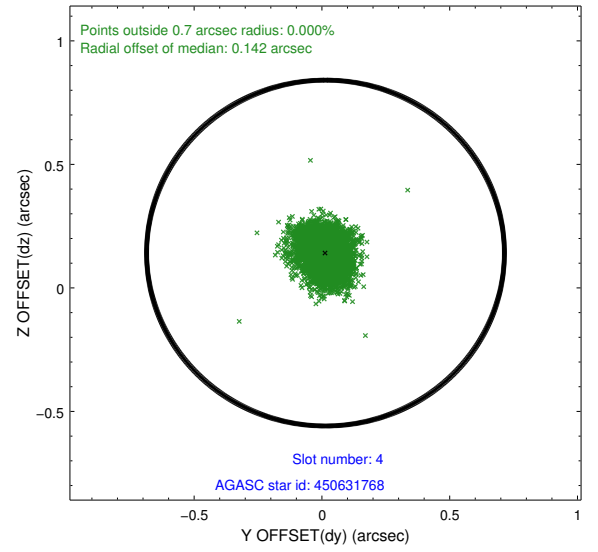
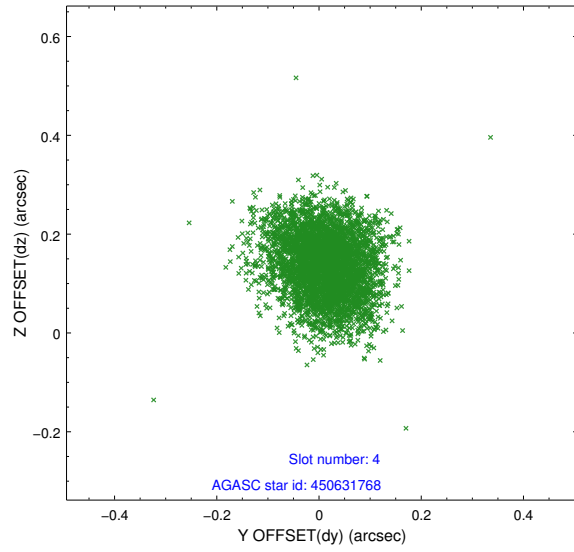
slot	status	id	mag	n_pts	med_dy	med_dz	dr1	dr2	ra	dec	mean_y	mean_z
0	FID	ACIS-S-2	7.12	1997	-0.003	0.006	0.007	0.011	0.000000	0.000000	-756.12	-1728.74
1	FID	ACIS-S-4	7.21	1997	-0.006	0.000	0.006	0.011	0.000000	0.000000	2156.85	179.01
2	FID	ACIS-S-5	7.24	1996	-0.023	0.003	0.007	0.012	0.000000	0.000000	-1808.09	173.49
3	GUIDE	450234016	8.71	3992	0.084	-0.196	0.075	0.118	153.913885	47.313910	-612.22	2292.62
4	GUIDE	450631768	9.17	3990	0.014	0.141	0.090	0.144	155.362295	47.870739	647.38	-1552.96
5	GUIDE	450631944	8.95	3991	-0.062	0.150	0.092	0.154	155.513728	48.292028	2067.49	-2199.90
6	GUIDE	450633048	7.70	3992	-0.151	0.187	0.057	0.093	155.424410	48.041995	1224.77	-1818.04
7	GUIDE	450237224	7.84	3991	0.108	-0.283	0.061	0.097	153.887796	47.369432	-403.41	2312.49

2.4 Star Slots

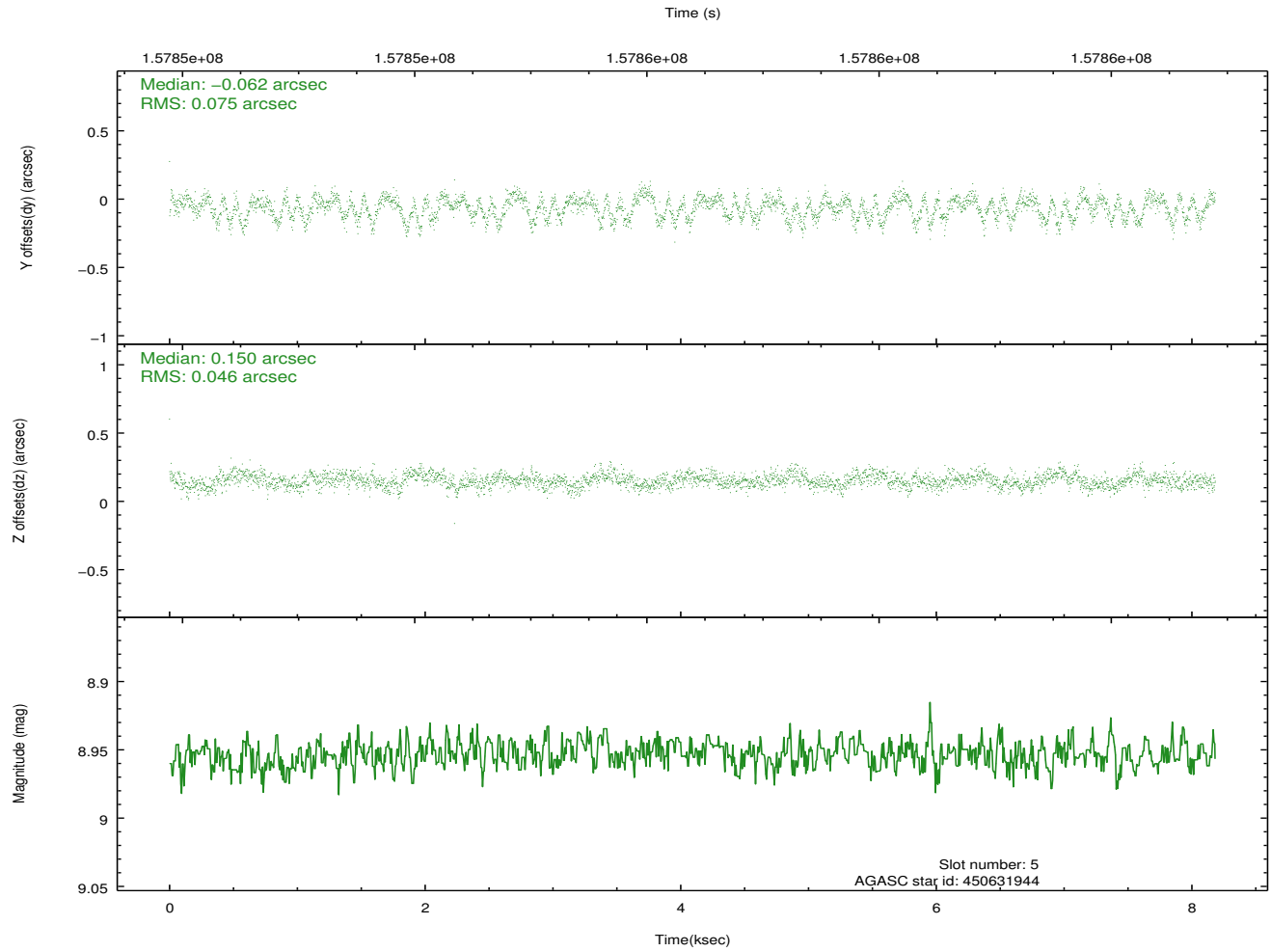
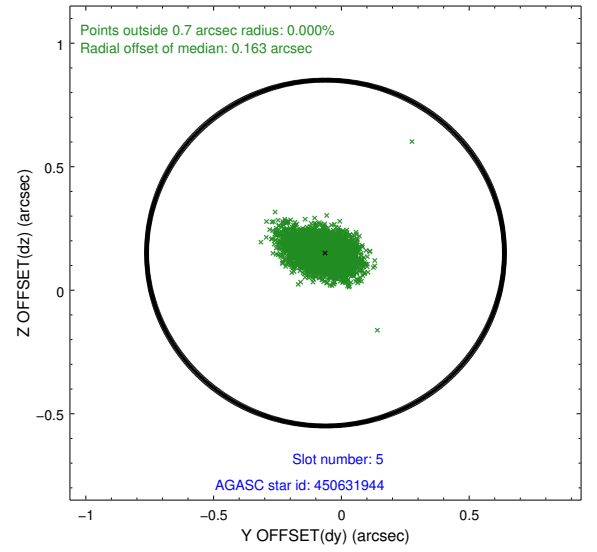
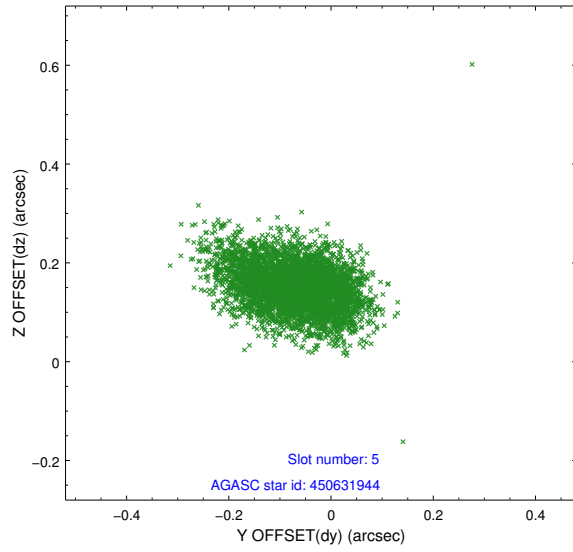
2.4.1 Slot 3



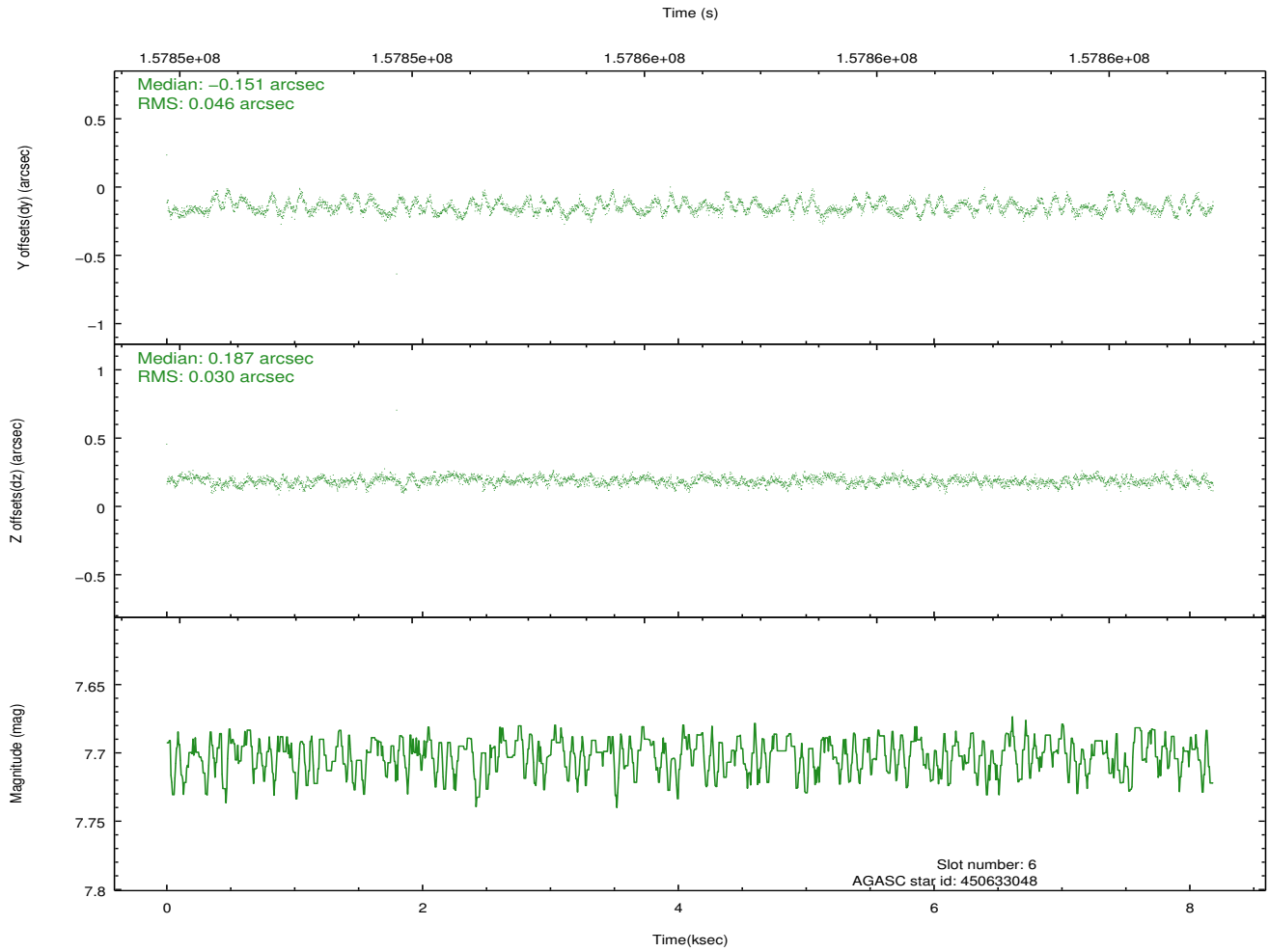
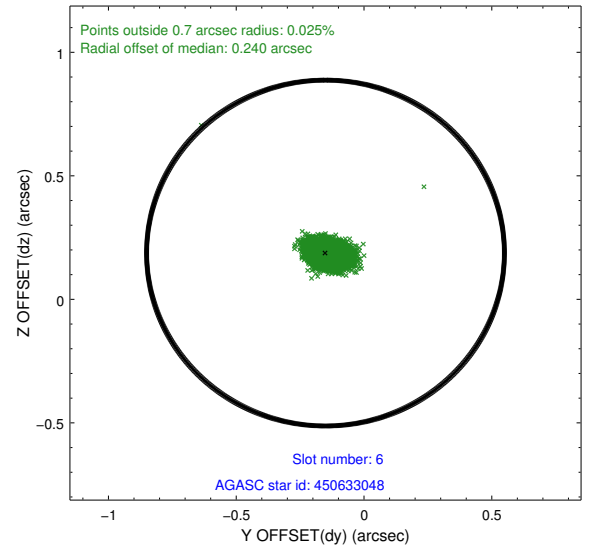
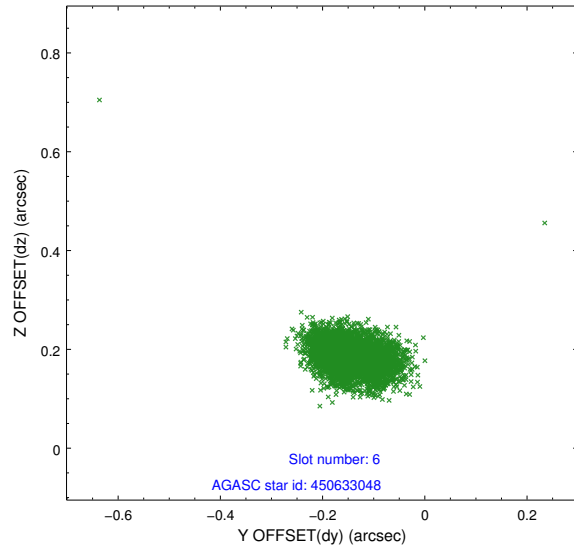
2.4.2 Slot 4



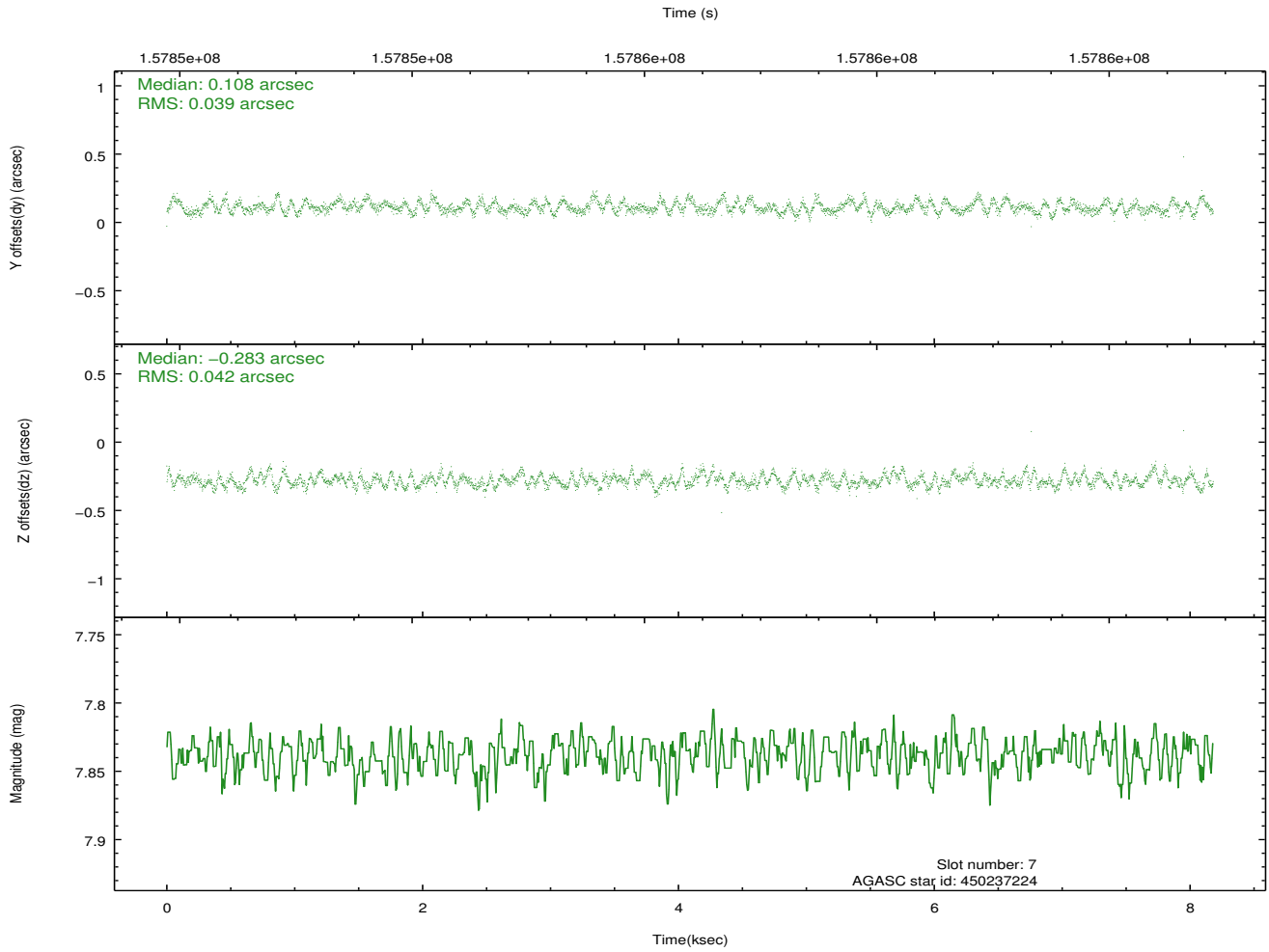
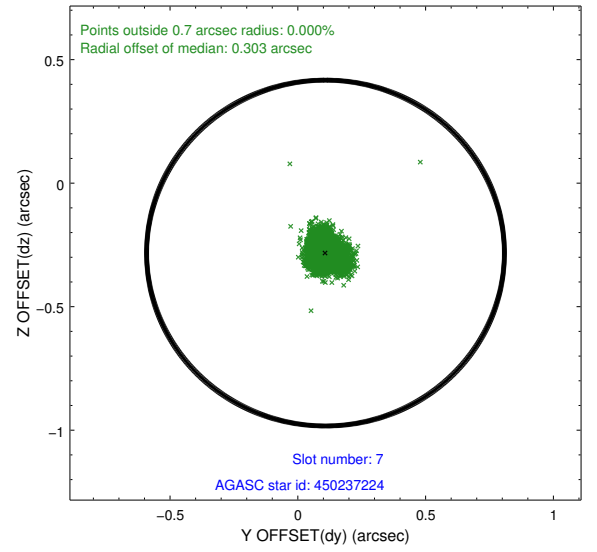
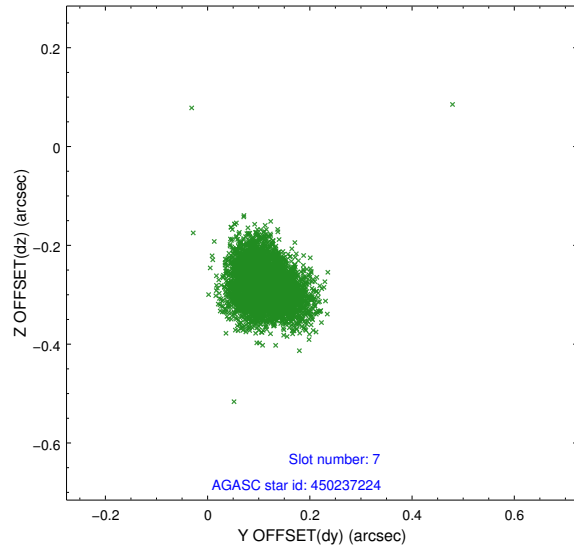
2.4.3 Slot 5



2.4.4 Slot 6

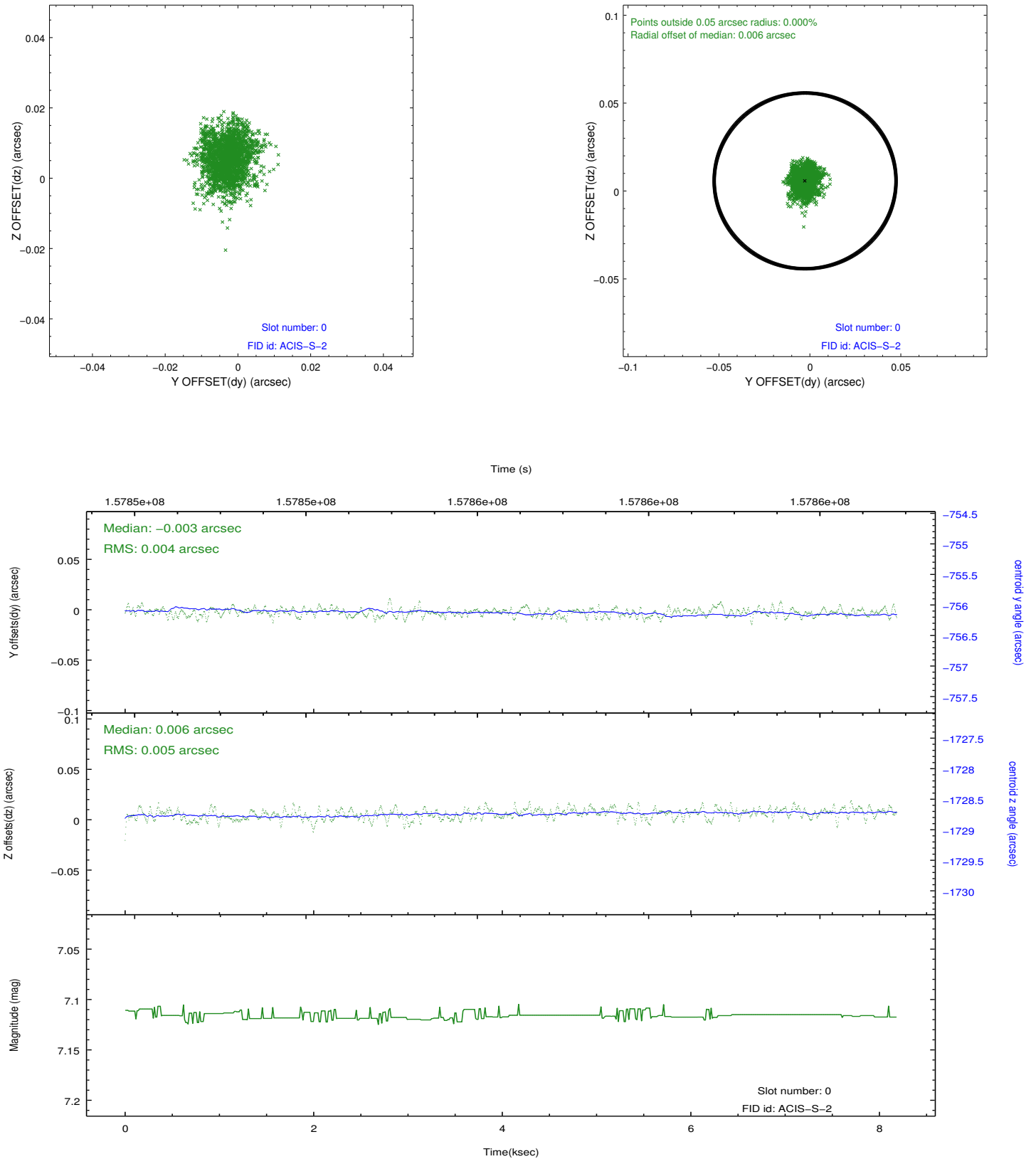


2.4.5 Slot 7

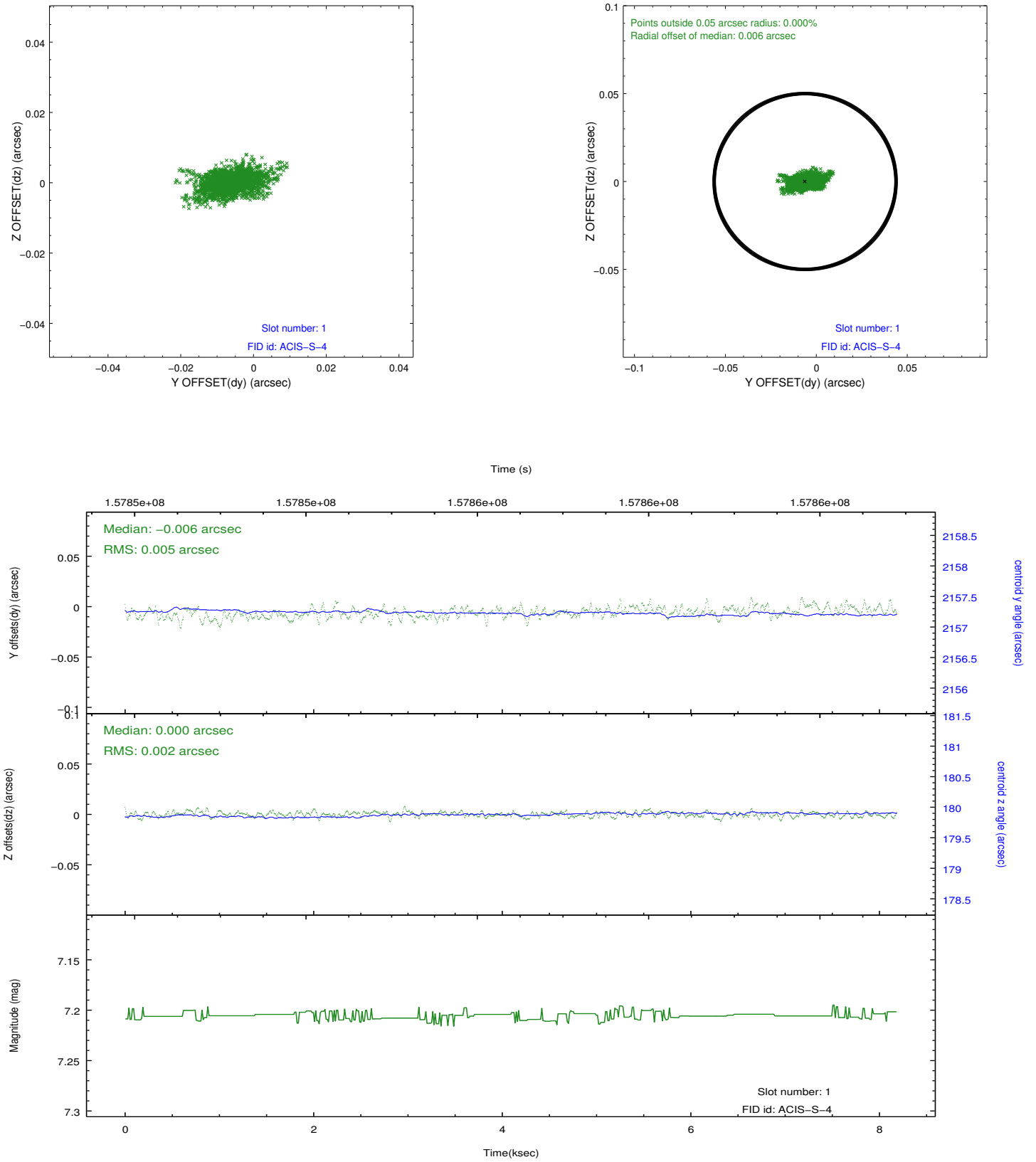


2.5 FID Slots

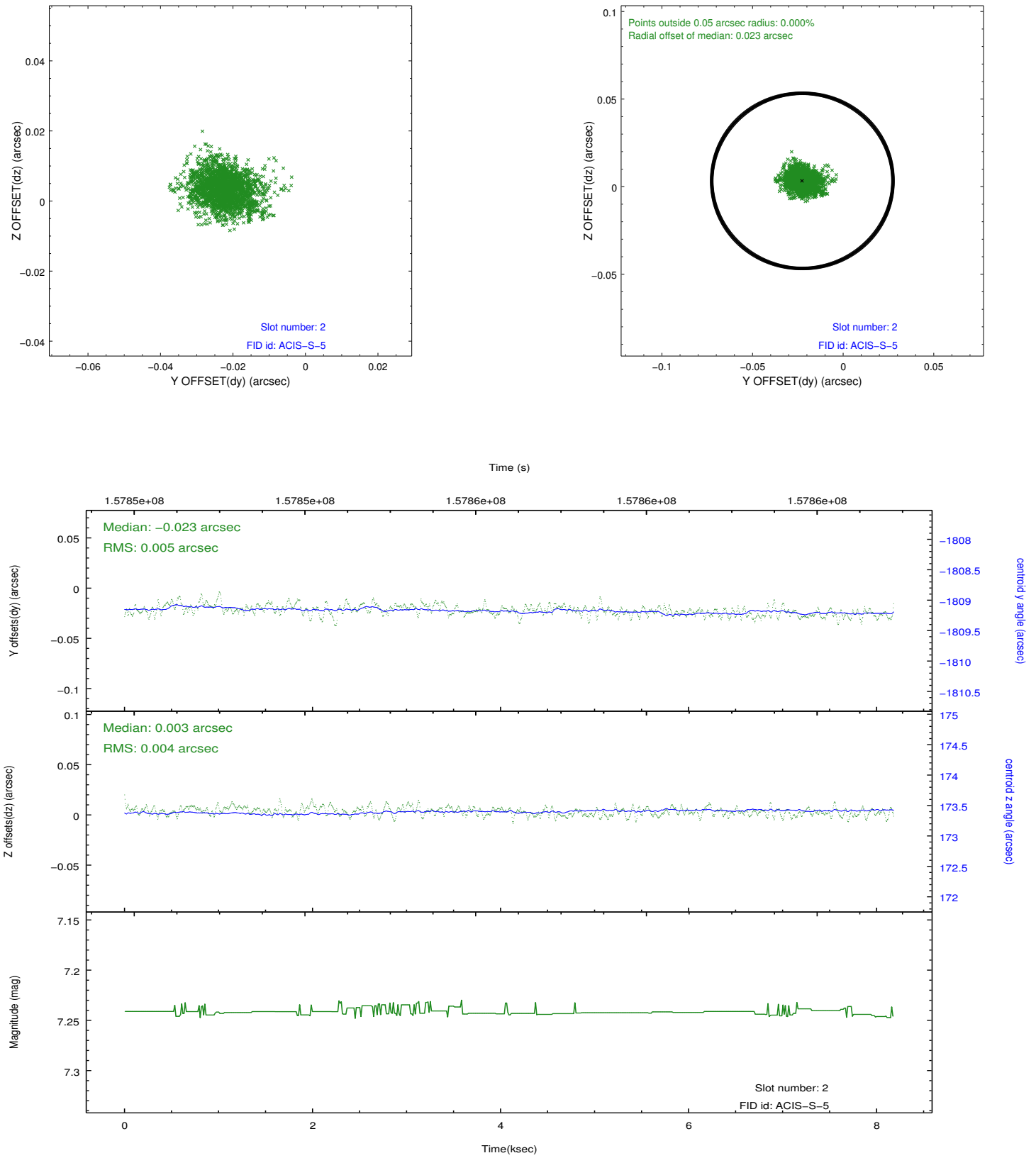
2.5.1 Slot 0



2.5.2 Slot 1



2.5.3 Slot 2



A Summary

A.1 Status

V&V Scientist	Jen Lauer
V&V Date (YYYY-MM-DD)	2012.10.31
V&V Edition	1
V&V Disposition and Status	OK
V&V Charge Time	8.086

A.2 Comments