

V&V Reference Report

L2 ASCDS Version : 7.6.8

Observation 4143 - L2 Version 001
Chandra X-Ray Center

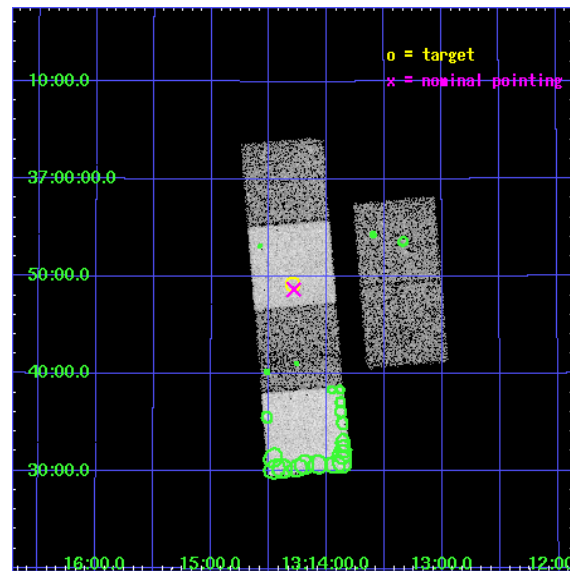
L2 Processing Date : Jul 12 2006

Contents

1	Front	2
2	OBI	3
2.1	OBI	3
2.1.1	Images	3
2.1.2	Bias	3
2.1.3	Parameters	4
2.1.4	Events	4
2.2	Compared Parameters	5
2.3	Aspect	6
2.4	Star Slots	9
2.4.1	Slot 3	9
2.4.2	Slot 4	10
2.4.3	Slot 5	11
2.4.4	Slot 6	12
2.4.5	Slot 7	13
2.5	FID Slots	14
2.5.1	Slot 0	14
2.5.2	Slot 1	15
2.5.3	Slot 2	16
3	Point Sources	17
A	Summary	18
A.1	Status	18
A.2	Comments	18

1 Front

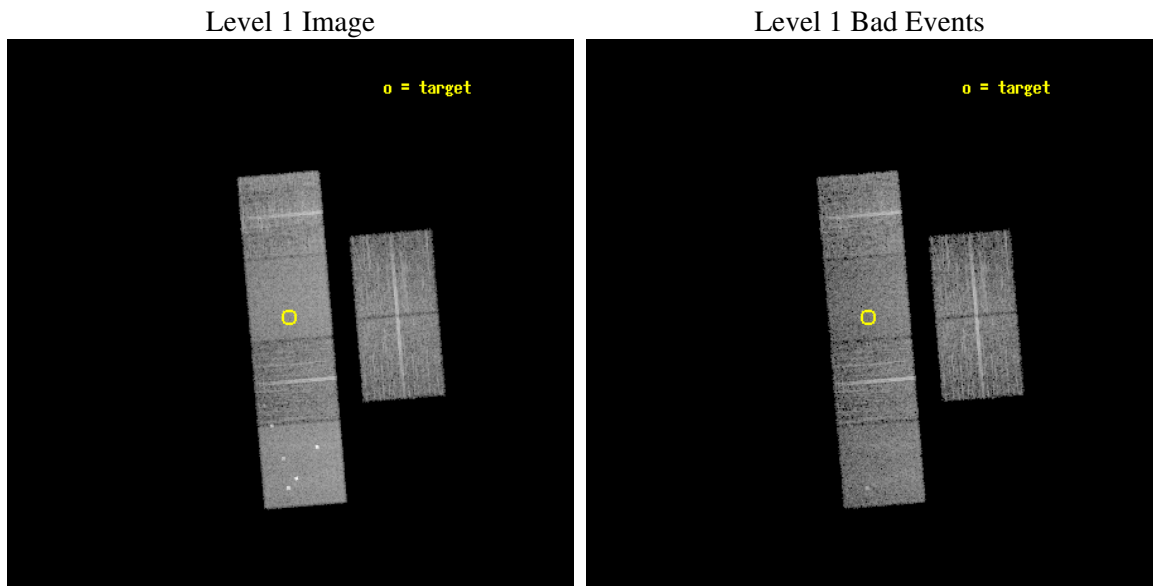
seq_num	700822
obs_id	4143
title	OBSCURED HIGH REDSHIFT RADIO GALAXIES
observer	Wil van Bruegel
object	J1314+3649
dtcycle	0
cycle	P
ra_targ	198.574583
dec_targ	36.820722
ra_nom	198.57147928156
dec_nom	36.811366359892
roll_nom	265.16933818017
revision	2
ontime	9033.5999663472
livetime	8919.2110841925
ontime2	9033.5999663472
ontime3	9033.5999663472
ontime5	9033.5999663472
ontime6	9033.5999663472
ontime7	9033.5999663472
ontime8	9033.5999663472
l2events	85415



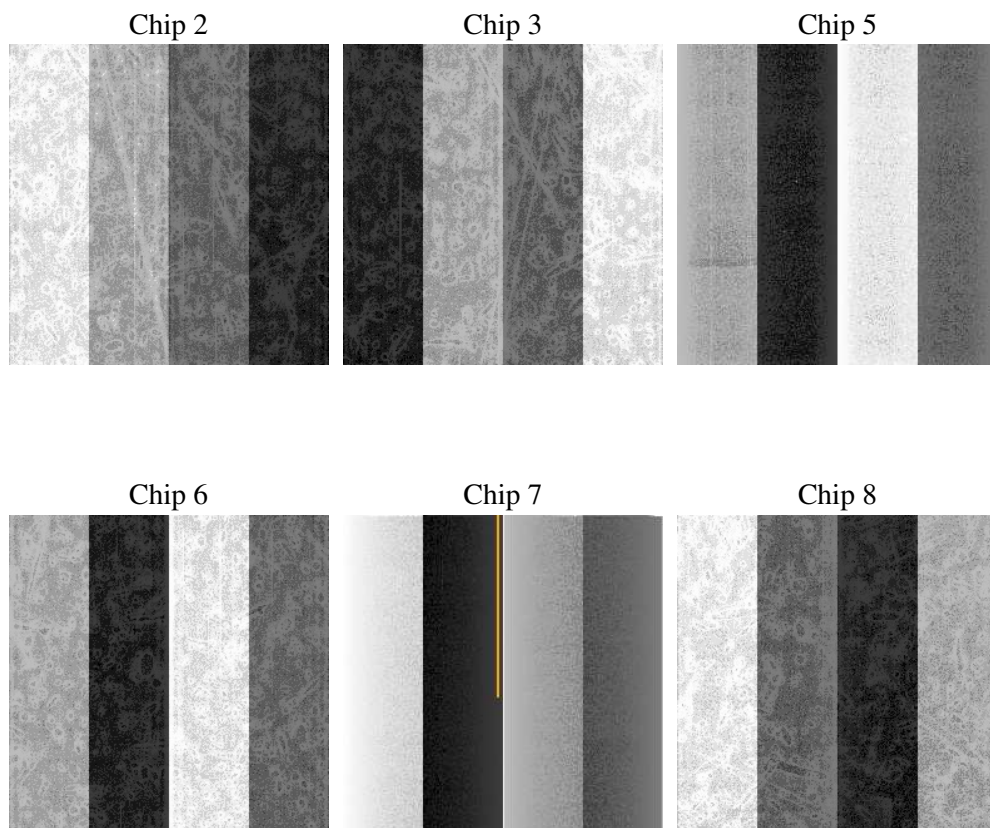
2 OBI

2.1 OBI

2.1.1 Images



2.1.2 Bias



2.1.3 Parameters

obi_num	0
ascdsver	7.6.8
caldbver	3.2.2
date	2006-07-12T13:44:46
revision	2

sched_exp_time	9068.000000
ontime	9035.9081754684
ontime2	9035.9081754684
ontime3	9035.9081754684
ontime5	9035.9081754684
ontime6	9035.9081754684
ontime7	9035.9081754684
ontime8	9035.9081754684
l1events	398735

2.1.4 Events

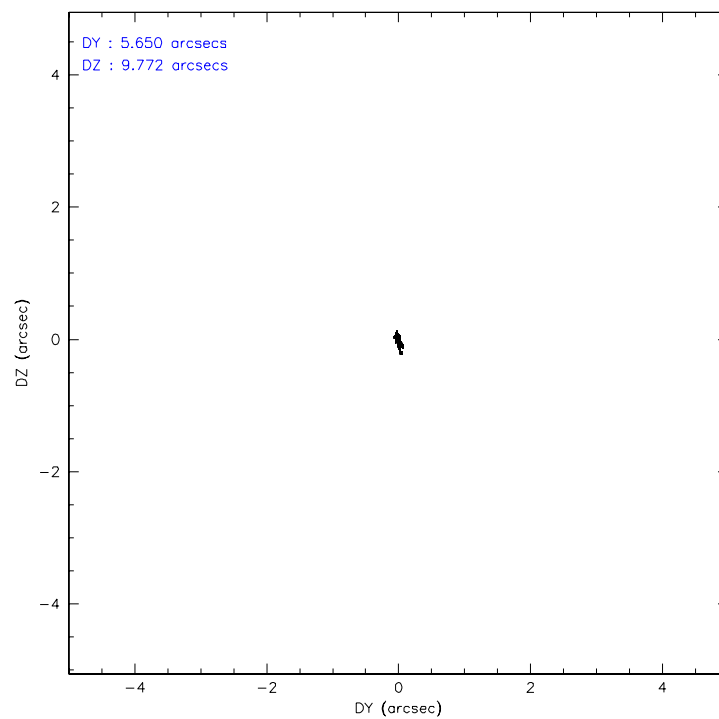
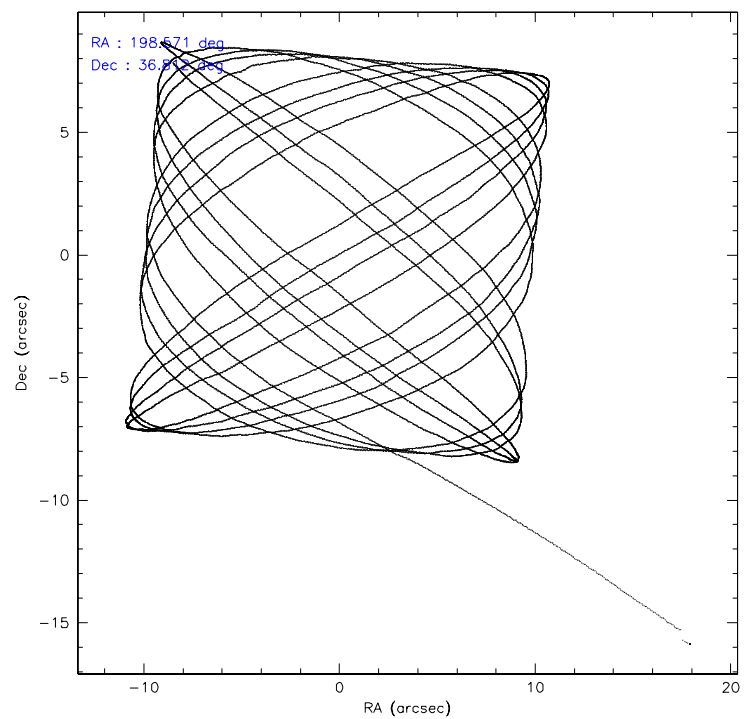
	ccd 2	ccd 3	ccd 5	ccd 6	ccd 7	ccd 8
level 1 events	56968	54903	84582	55365	73826	73091
rejected events	50085	48138	46047	48445	45879	56645
rejected %	87%	87%	54%	87%	62%	77%

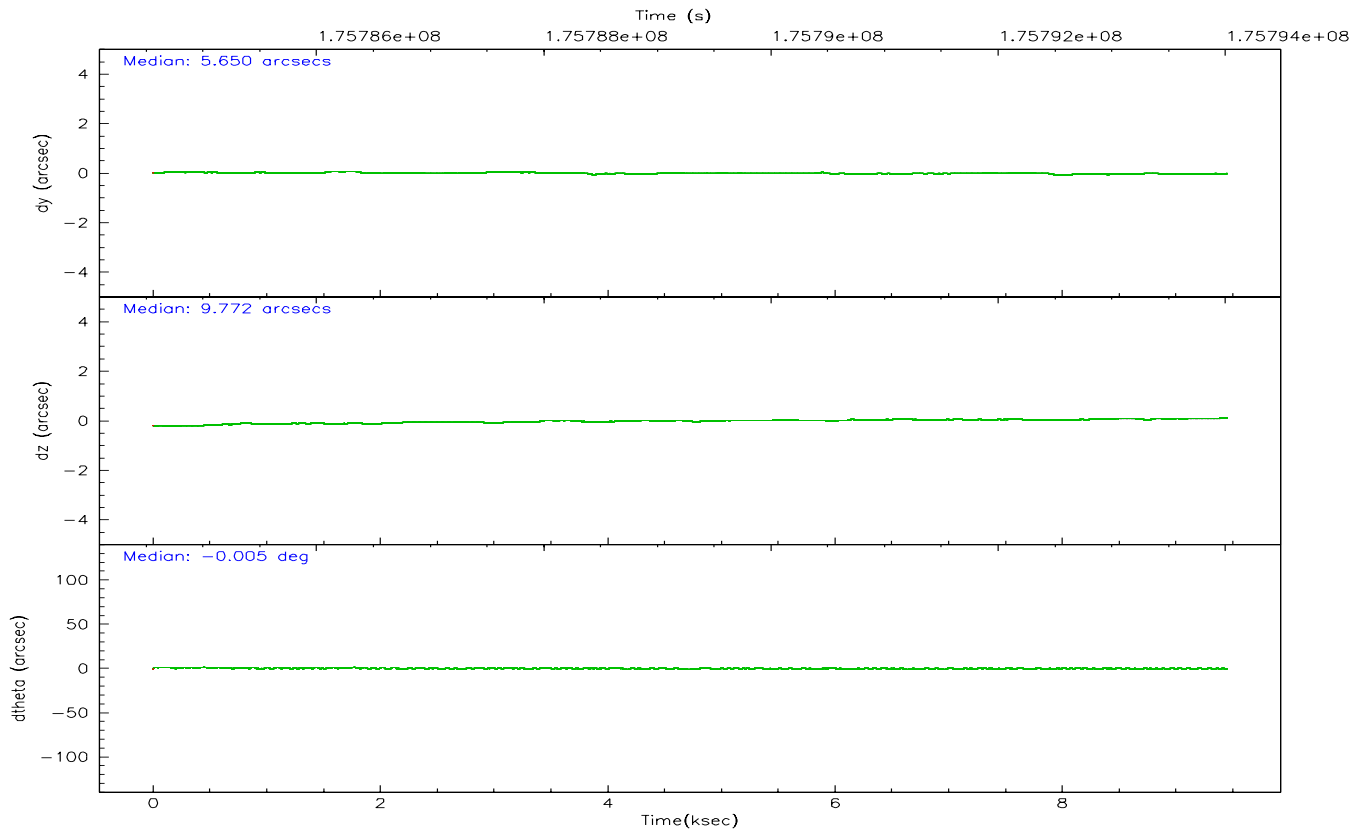
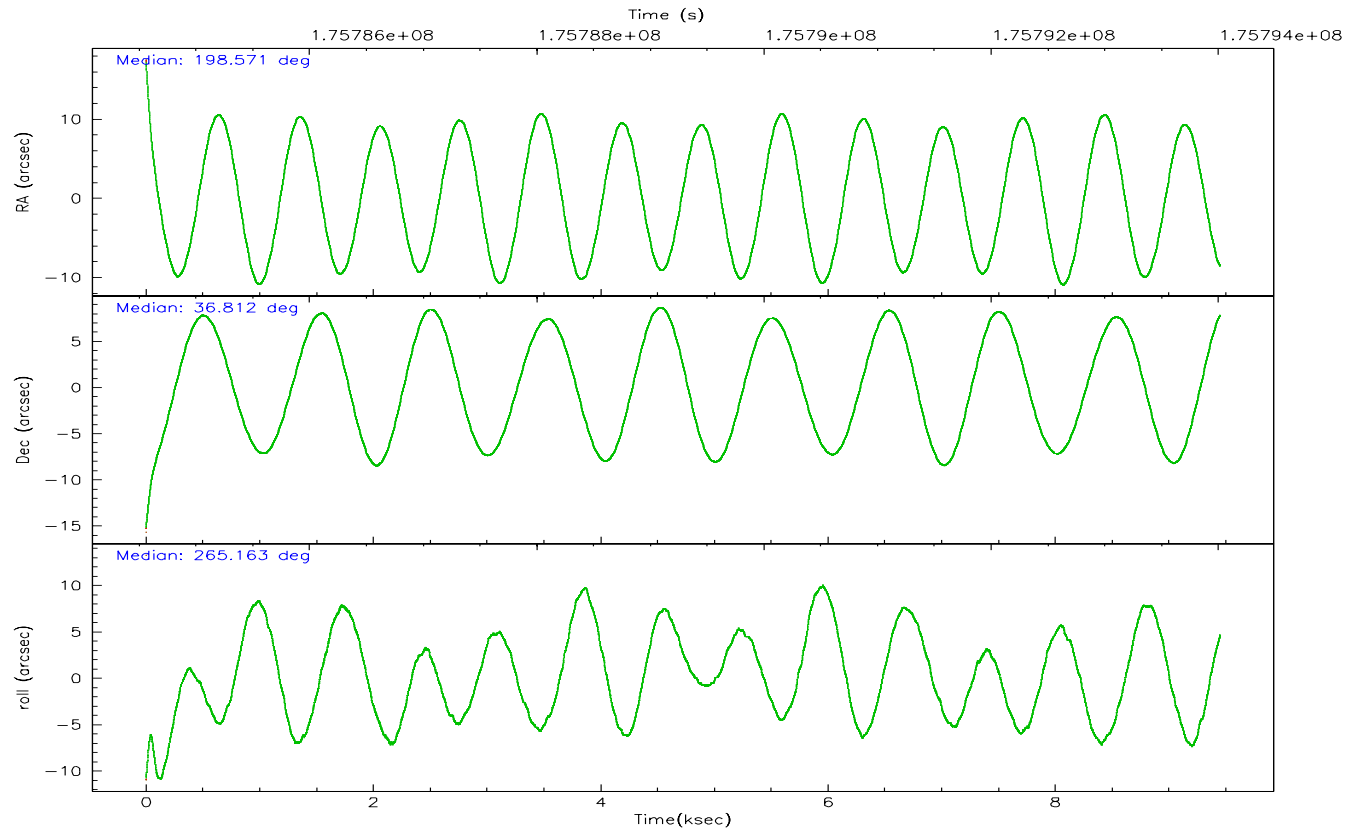
	ccd 2	ccd 3	ccd 5	ccd 6	ccd 7	ccd 8
grade 0 events	3062	2916	5111	2861	1715	5292
	5%	5%	6%	5%	2%	7%
grade 1 events	36	47	104	28	45	49
	0%	0%	0%	0%	0%	0%
grade 2 events	1464	1350	11404	1415	6848	3439
	2%	2%	13%	2%	9%	4%
grade 3 events	668	637	857	668	1395	1897
	1%	1%	1%	1%	1%	2%
grade 4 events	557	635	737	632	1388	1747
	0%	1%	0%	1%	1%	2%
grade 5 events	2170	2405	3820	2576	4894	3315
	3%	4%	4%	4%	6%	4%
grade 6 events	1133	1229	20442	1345	16611	4072
	1%	2%	24%	2%	22%	5%
grade 7 events	47878	45684	42107	45840	40930	53280
	84%	83%	49%	82%	55%	72%

2.2 Compared Parameters

Parameter	Planned	Actual	Parameter	Planned	Actual
Instrument	ACIS	ACIS	Obspar format version number	6	6
Detector	ACIS-235678	ACIS-235678	Obspar file type	PREDICTED	ACTUAL
Grating	NONE	NONE	Obspar update status	NONE	UPDATED
Data mode	FAINT	FAINT	On-chip summing requested	N	N
Observation mode	POINTING	POINTING	Subarray requested	NONE	NONE
Pointing RA	198.556587	198.5714792815593	Alternating exposures requested	N	N
Pointing Dec	36.835871	36.81136635989152	Primary exposure time	0.000000	3.2
Pointing Roll	265.021630	265.1693381801681			
SIM focus pos (mm)	-0.684267	-0.6828225247311905			
SIM defocus (mm)	0	0.001444936568705701			
SIM translation stage pos (mm)	-190.132523	-190.1425803651734			
SIM translation stage offset (mm)	0	0.01005778216563158			
Observation start time	175784944.184000	175783880.62823			
Observation start date	2003-07-28T13:08:00	2003-07-28T12:51:20			
Observation end time	175794012.184000	175794514.49118			
Observation end date	2003-07-28T15:39:08	2003-07-28T15:48:34			
Read mode	TIMED	TIMED			

2.3 Aspect



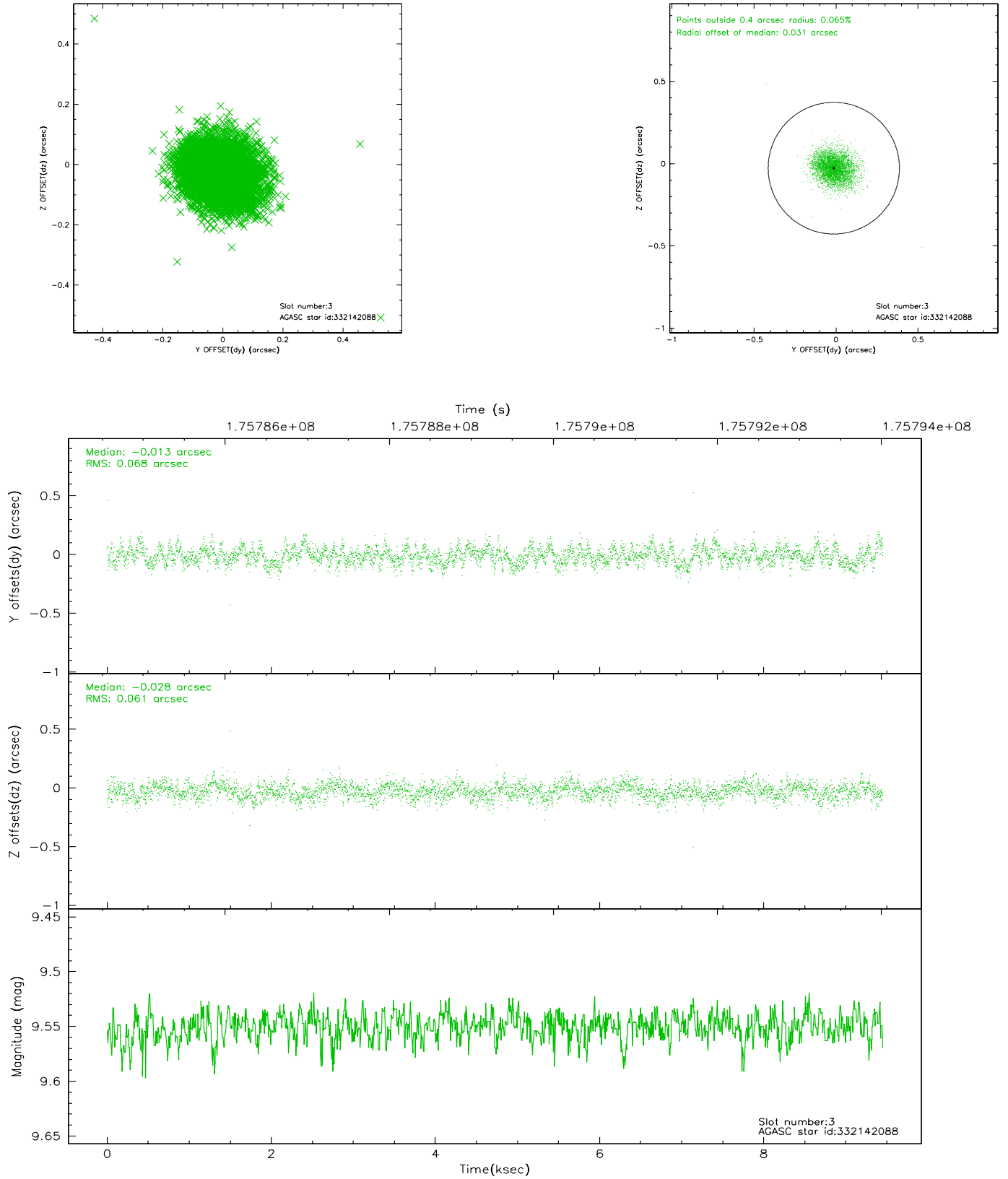


Slot Statistics

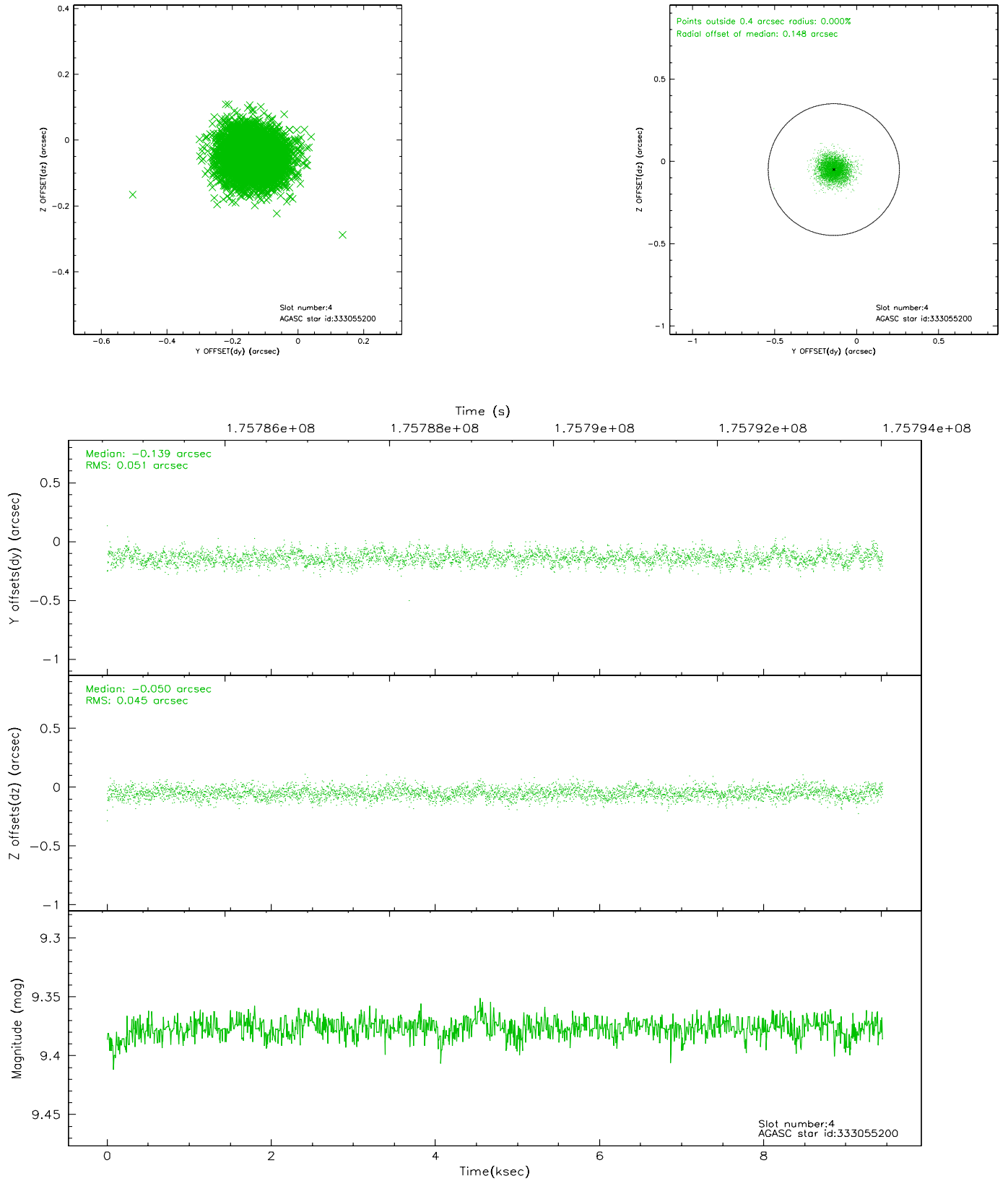
slot	status	id	mag	n_pts	med_dy	med_dz	dr1	dr2	ra	dec	mean_y	mean_z
0	FID	ACIS-S-2	7.10	2305	-0.055	-0.015	0.007	0.011	0.000000	0.000000	-758.40	-1730.96
1	FID	ACIS-S-4	7.20	2306	0.056	0.030	0.005	0.008	0.000000	0.000000	2154.71	177.00
2	FID	ACIS-S-5	7.23	2306	-0.033	-0.007	0.007	0.011	0.000000	0.000000	-1810.50	171.25
3	GUIDE	332142088	9.55	4609	-0.013	-0.028	0.097	0.154	197.774037	36.602770	1023.72	-2180.93
4	GUIDE	333055200	9.38	4606	-0.139	-0.050	0.072	0.116	198.276568	37.376986	-1871.72	-967.98
5	GUIDE	333055808	8.84	4610	-0.043	0.054	0.062	0.101	198.883758	36.599554	763.88	1015.80
6	GUIDE	333058176	8.83	4611	0.157	0.156	0.075	0.123	199.176915	36.381304	1468.97	1933.24
7	GUIDE	333059040	9.83	4608	0.040	-0.130	0.092	0.150	198.328354	36.958640	-383.29	-692.22

2.4 Star Slots

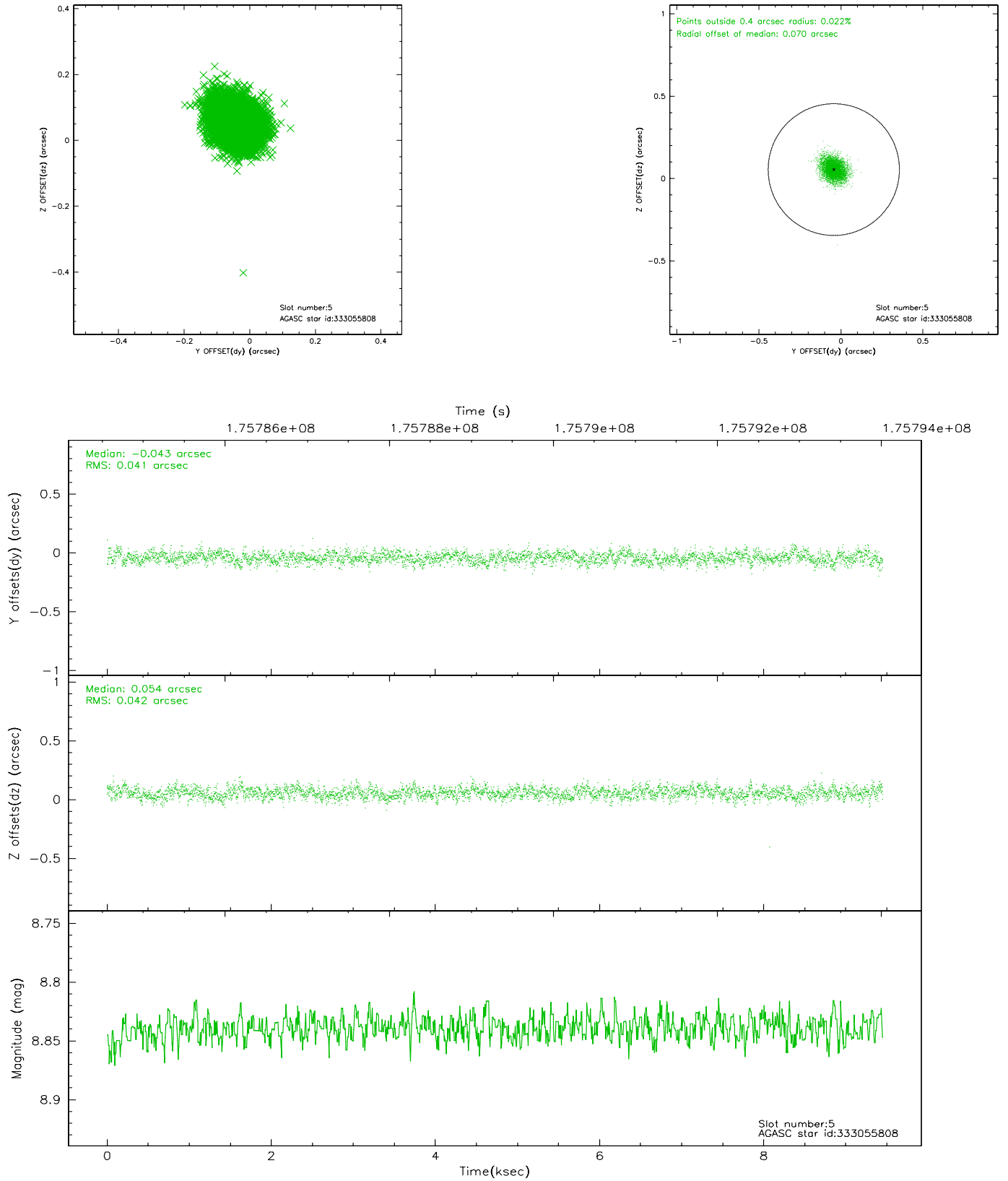
2.4.1 Slot 3



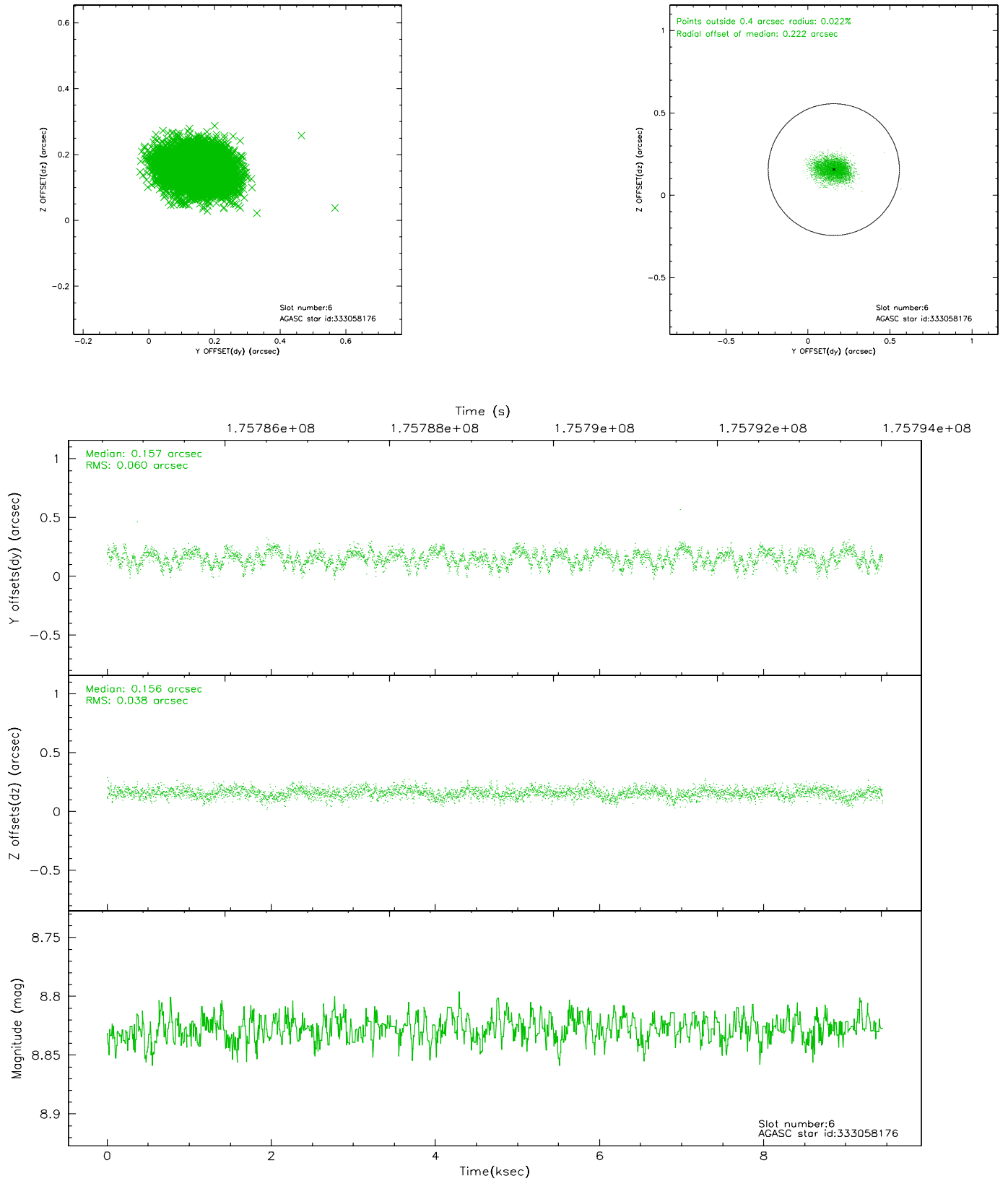
2.4.2 Slot 4



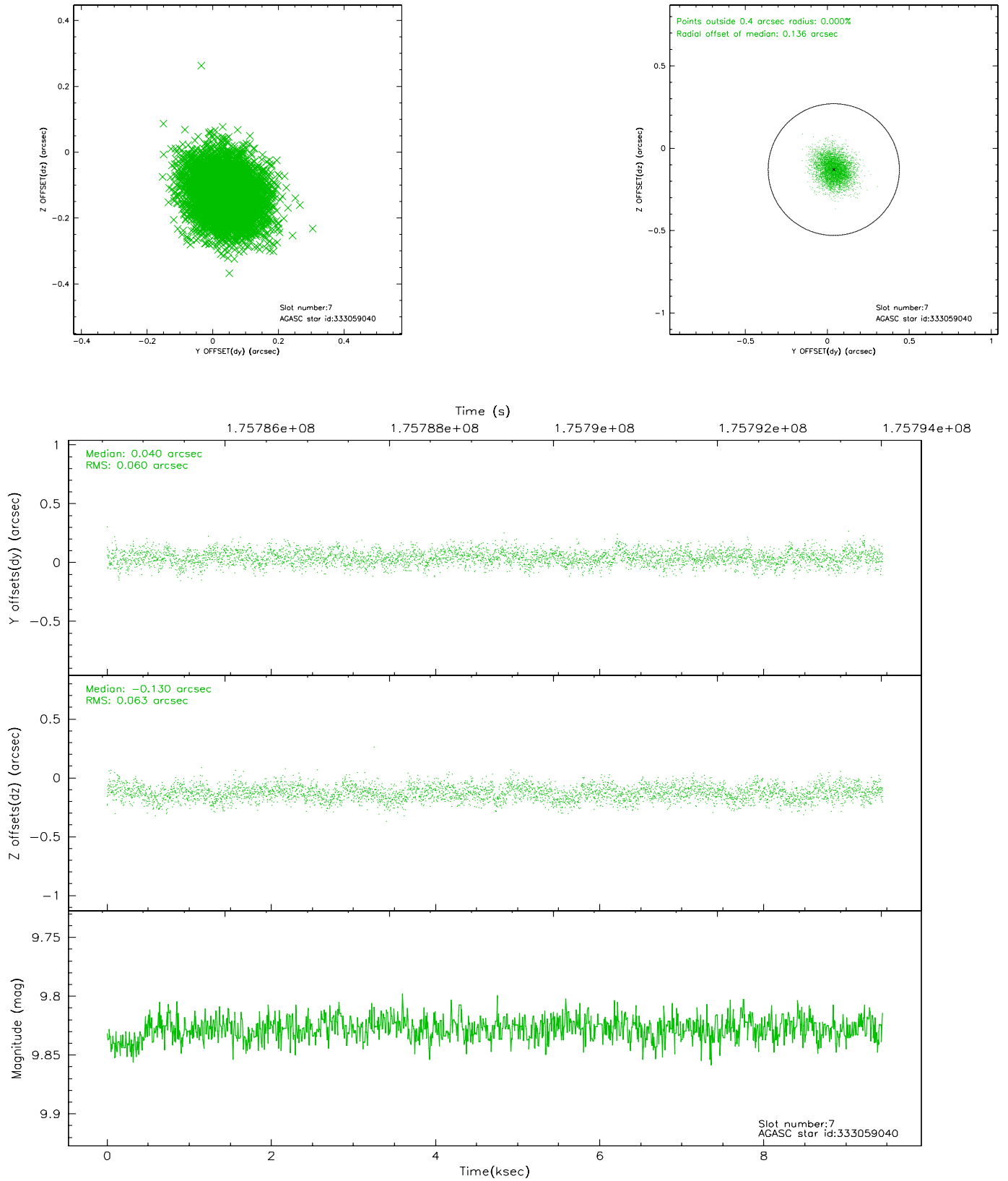
2.4.3 Slot 5



2.4.4 Slot 6

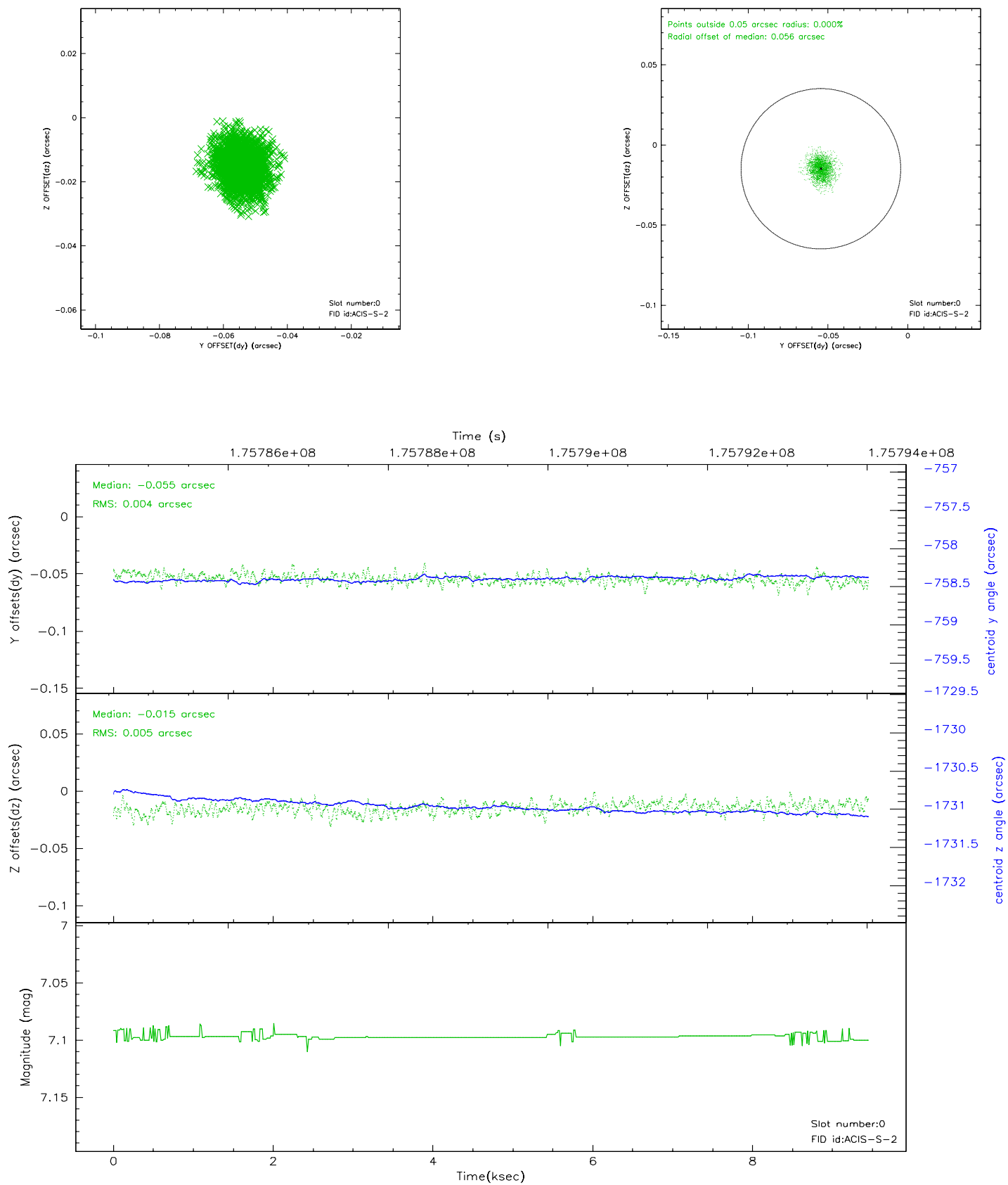


2.4.5 Slot 7

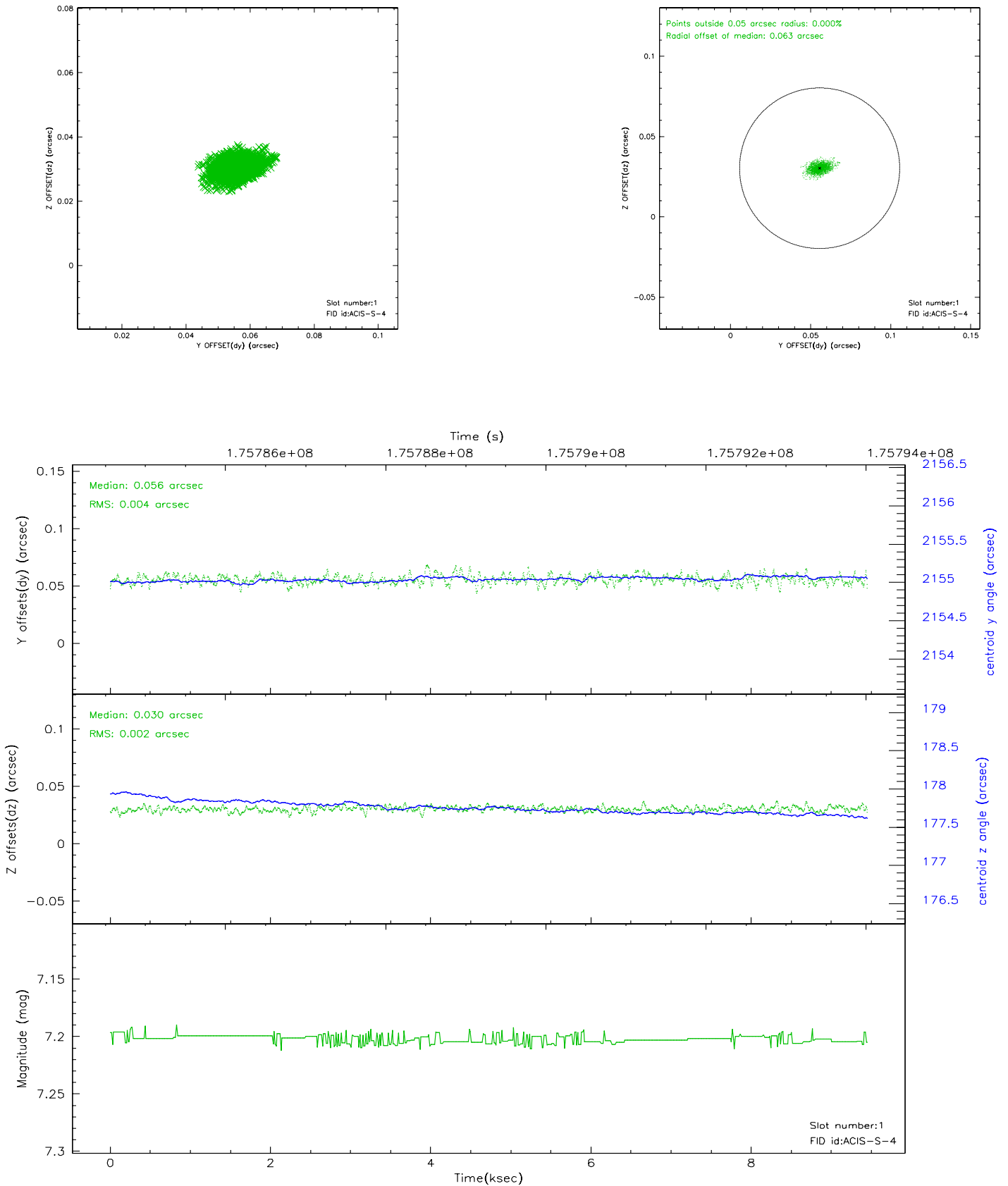


2.5 FID Slots

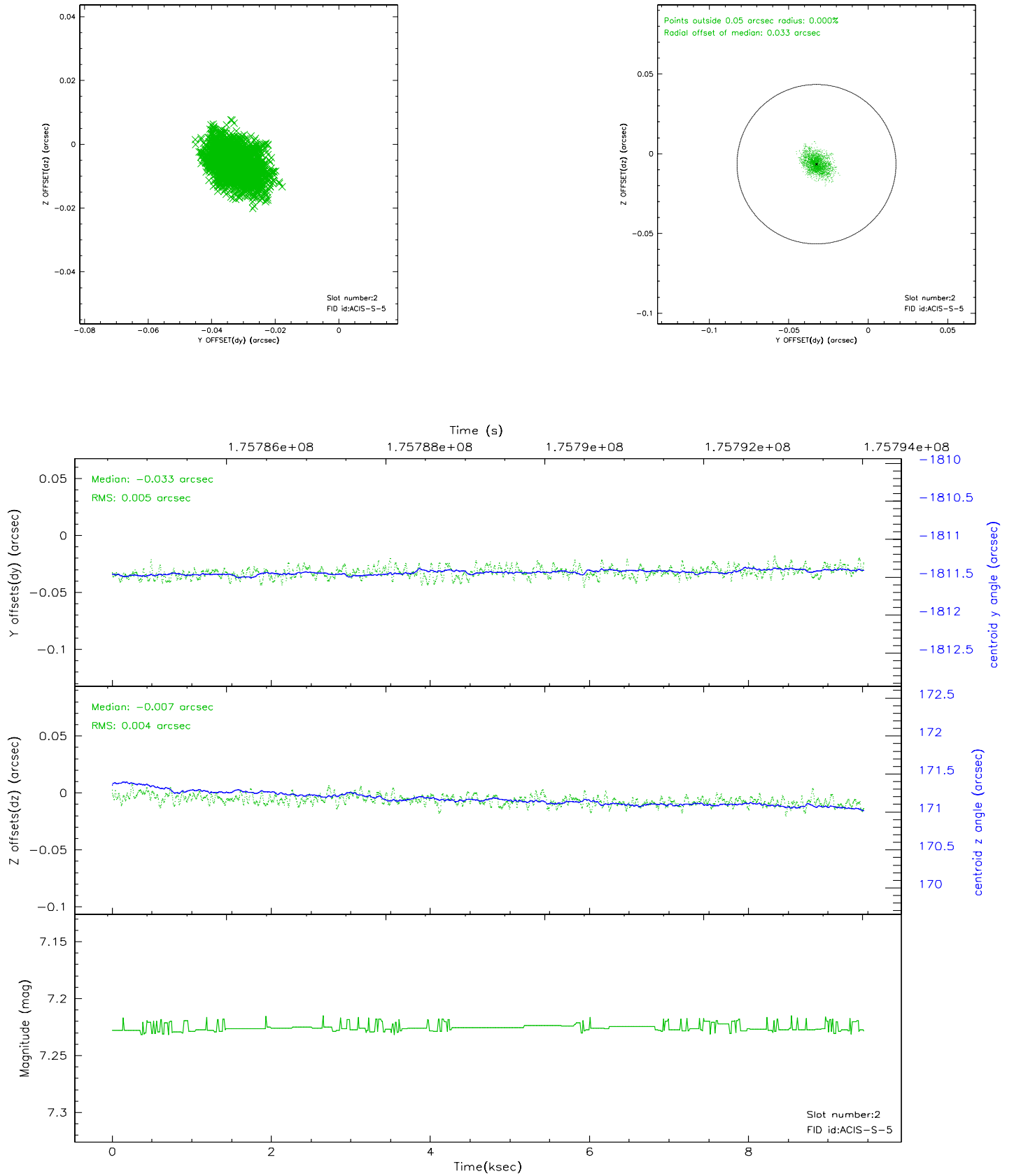
2.5.1 Slot 0



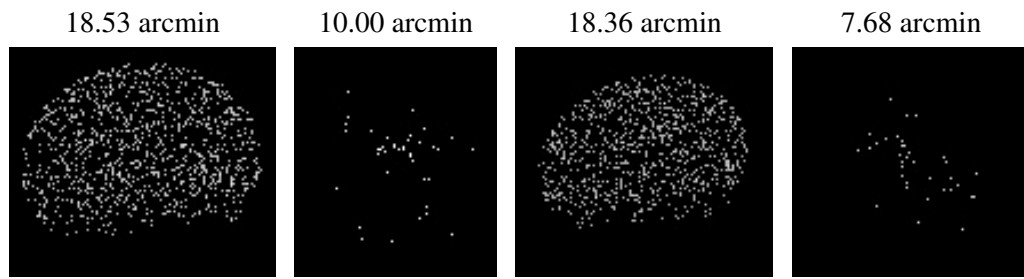
2.5.2 Slot 1



2.5.3 Slot 2



3 Point Sources



A Summary

A.1 Status

V&V Scientist	Jen Lauer
V&V Date (YYYY-MM-DD)	2006.07.12
V&V Edition	1
V&V Disposition and Status	OK
V&V Charge Time	9.033

A.2 Comments