

# V&V Reference Report

## L2 ASCDS Version : 7.6.8

Observation 4138 - L2 Version 001  
Chandra X-Ray Center

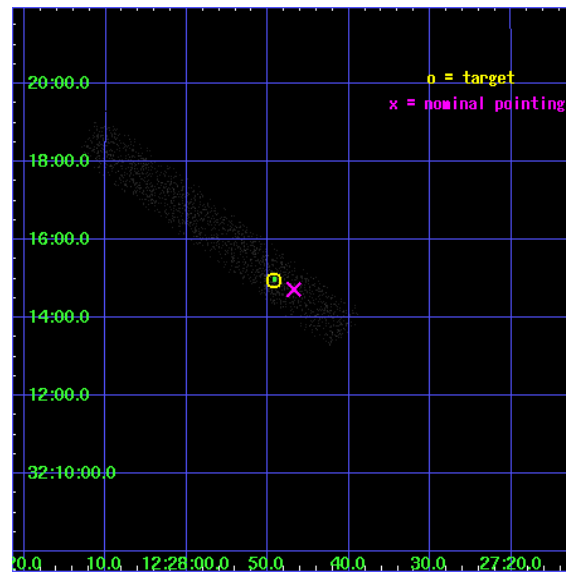
L2 Processing Date : Aug 1 2006

## Contents

<b>1</b>	<b>Front</b>	<b>2</b>
<b>2</b>	<b>OBI</b>	<b>3</b>
2.1	OBI . . . . .	3
2.1.1	Images . . . . .	3
2.1.2	Bias . . . . .	3
2.1.3	Parameters . . . . .	4
2.1.4	Events . . . . .	4
2.2	Compared Parameters . . . . .	5
2.3	Aspect . . . . .	6
2.4	Star Slots . . . . .	9
2.4.1	Slot 3 . . . . .	9
2.4.2	Slot 4 . . . . .	10
2.4.3	Slot 5 . . . . .	11
2.4.4	Slot 6 . . . . .	12
2.4.5	Slot 7 . . . . .	13
2.5	FID Slots . . . . .	14
2.5.1	Slot 0 . . . . .	14
2.5.2	Slot 1 . . . . .	15
2.5.3	Slot 2 . . . . .	16
<b>3</b>	<b>Point Sources</b>	<b>17</b>
<b>A</b>	<b>Summary</b>	<b>18</b>
A.1	Status . . . . .	18
A.2	Comments . . . . .	18

# 1 Front

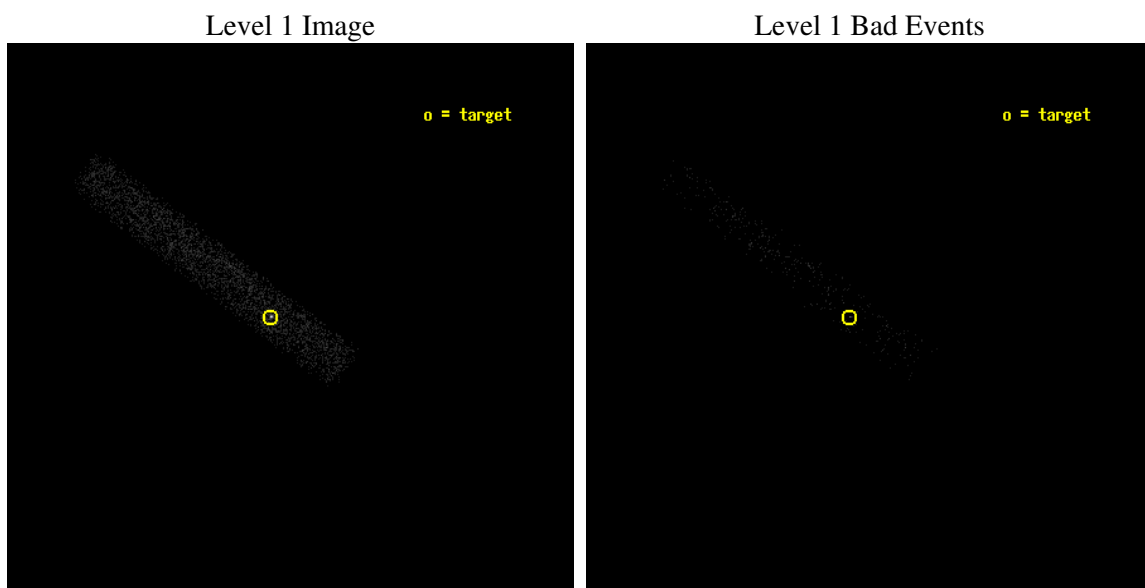
seq_num	700817
obs_id	4138
title	CHANDRA OBSERVATIONS OF THE FIRST SAMPLE OF RADIO-LOUD NARROW LINE SEYFERT I GALAXIES
observer	Dr. Sally Laurent-Muehleisen
object	FIRST J122749+321459
dtcycle	0
cycle	P
ra_targ	186.955
dec_targ	32.249722
ra_nom	186.94504864397
dec_nom	32.245425124996
roll_nom	216.98191428254
revision	2
ontime	3654.4000544548
livetime	3314.3479543396
ontime7	3654.4000544548
l2events	2820



## 2 OBI

### 2.1 OBI

#### 2.1.1 Images



#### 2.1.2 Bias

Chip 7



### 2.1.3 Parameters

obi_num	0
ascdsver	7.6.8
caldbver	3.2.2
date	2006-08-01T08:15:37
revision	2

sched_exp_time	2947.000000
ontime	3806.5710604787
ontime7	3806.5710604787
l1events	5442

### 2.1.4 Events

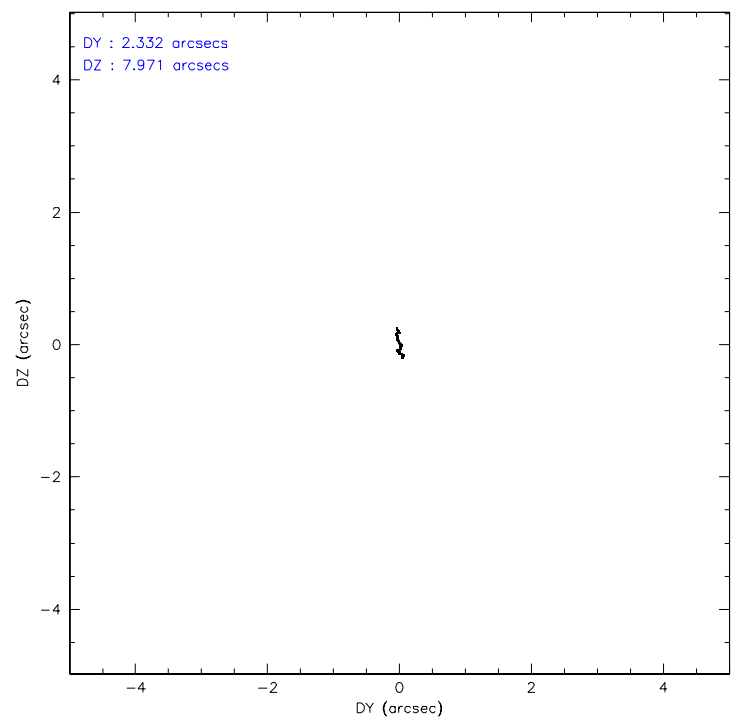
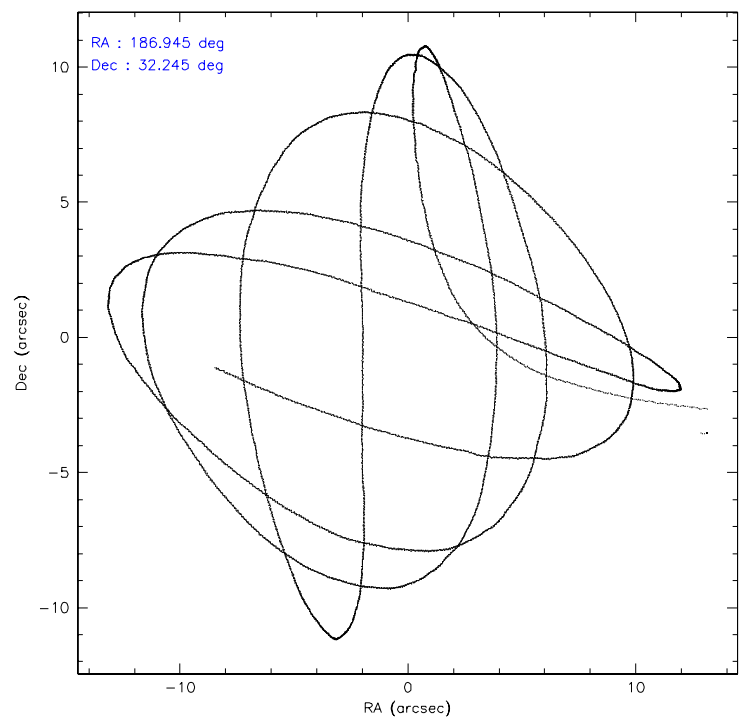
	<b>ccd 7</b>
level 1 events	5442
rejected events	2546
rejected %	46%

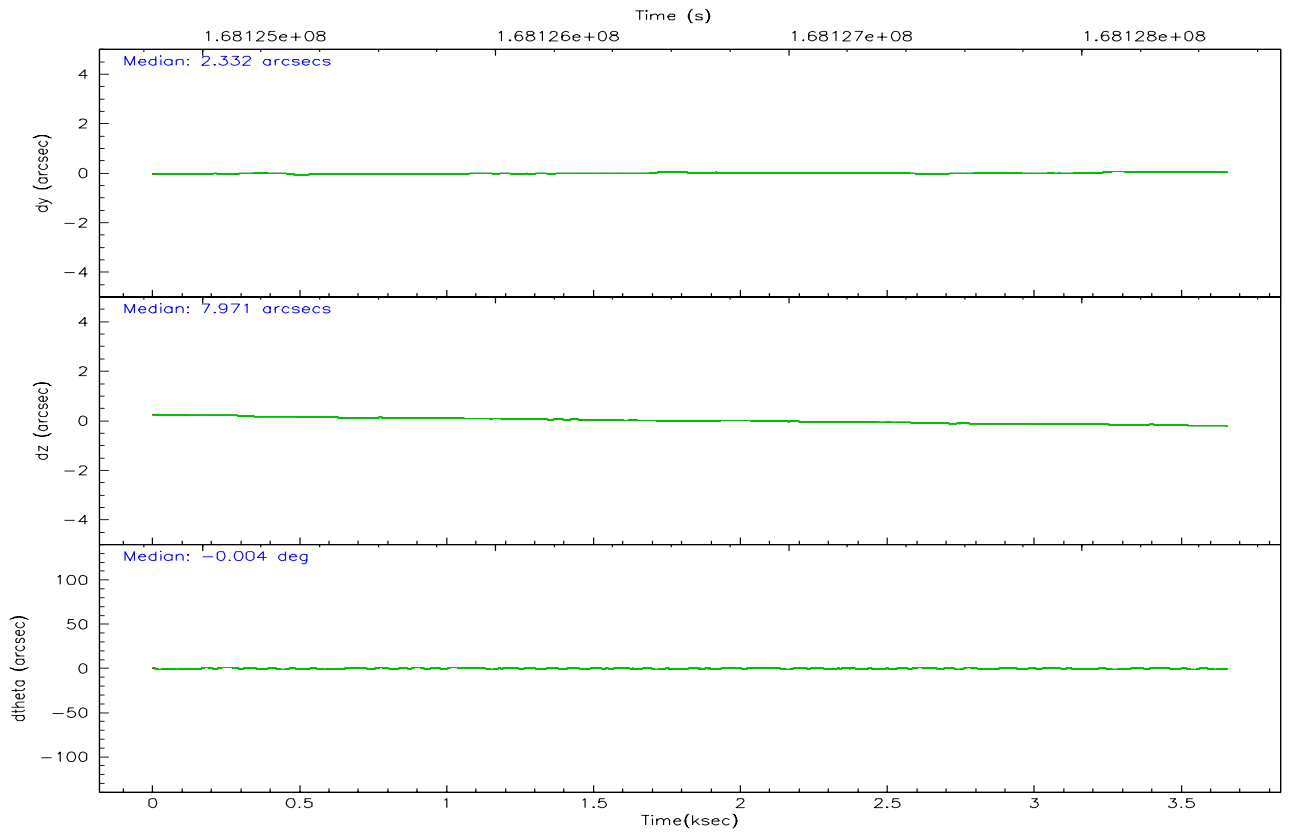
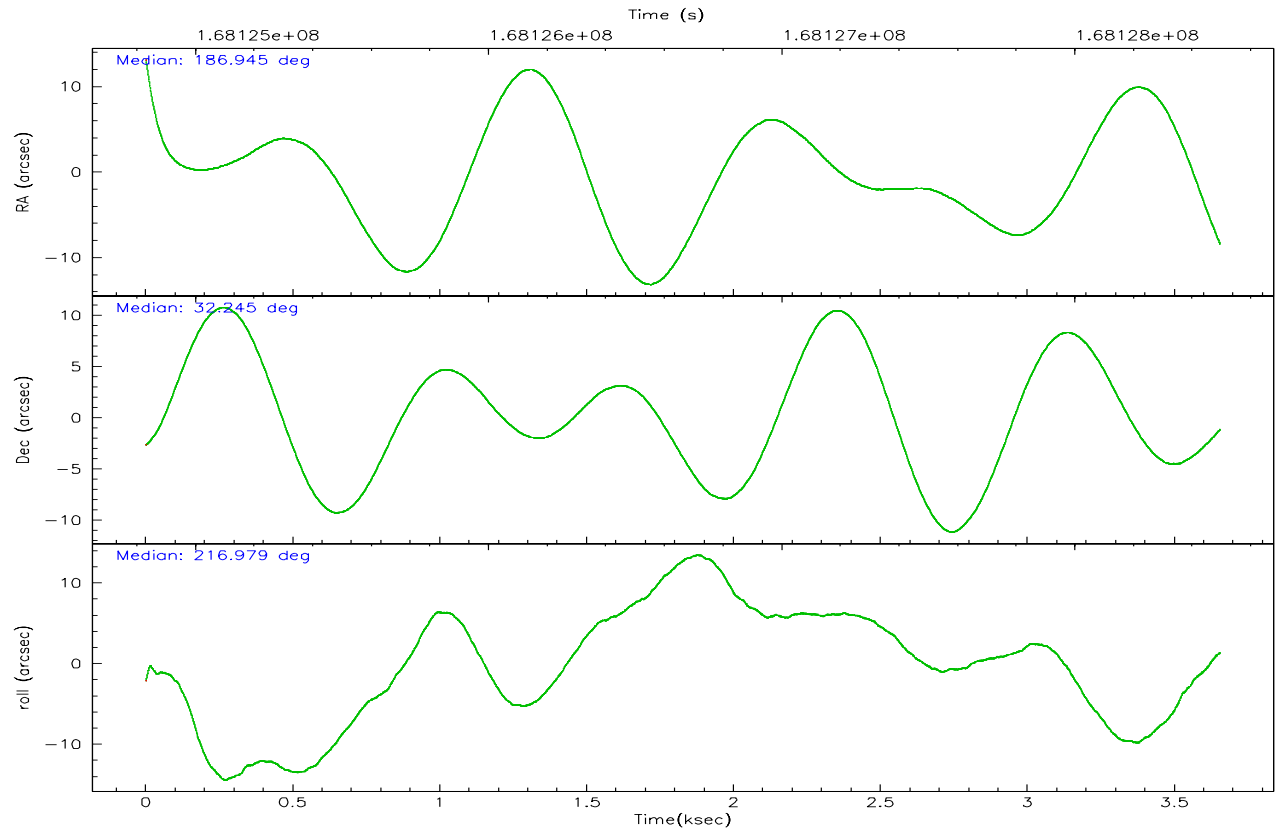
	<b>ccd 7</b>
grade 0 events	427
	7%
grade 1 events	1
	0%
grade 2 events	692
	12%
grade 3 events	320
	5%
grade 4 events	304
	5%
grade 5 events	316
	5%
grade 6 events	1236
	22%
grade 7 events	2146
	39%

## 2.2 Compared Parameters

Parameter	Planned	Actual	Parameter	Planned	Actual
Instrument	ACIS	ACIS	Obspar format version number	6	6
Detector	ACIS-7	ACIS-7	Obspar file type	PREDICTED	ACTUAL
Grating	NONE	NONE	Obspar update status	NONE	UPDATED
Data mode	FAINT	FAINT	On-chip summing requested	N	N
Observation mode	POINTING	POINTING	Subarray requested	1/8	1/8
Pointing RA	186.956999	186.945048643969	Subarray start row	0	449
Pointing Dec	32.270558	32.24542512499636	Subarray row count	1024	128
Pointing Roll	216.818855	216.9819142825405	Alternating exposures requested	N	N
SIM focus pos (mm)	-0.684267	-0.6828225247311905	Primary exposure time	0.000000	0.4
SIM defocus (mm)	0	0.001444936568705701			
SIM translation stage pos (mm)	-190.132523	-190.1425803651734			
SIM translation stage offset (mm)	0	0.01005778216563158			
Observation start time	168125542.184000	168124319.75295			
Observation start date	2003-04-30T21:31:18	2003-04-30T21:11:59			
Observation end time	168128489.184000	168128906.62814			
Observation end date	2003-04-30T22:20:25	2003-04-30T22:28:26			
Read mode	TIMED	TIMED			

2.3 Aspect





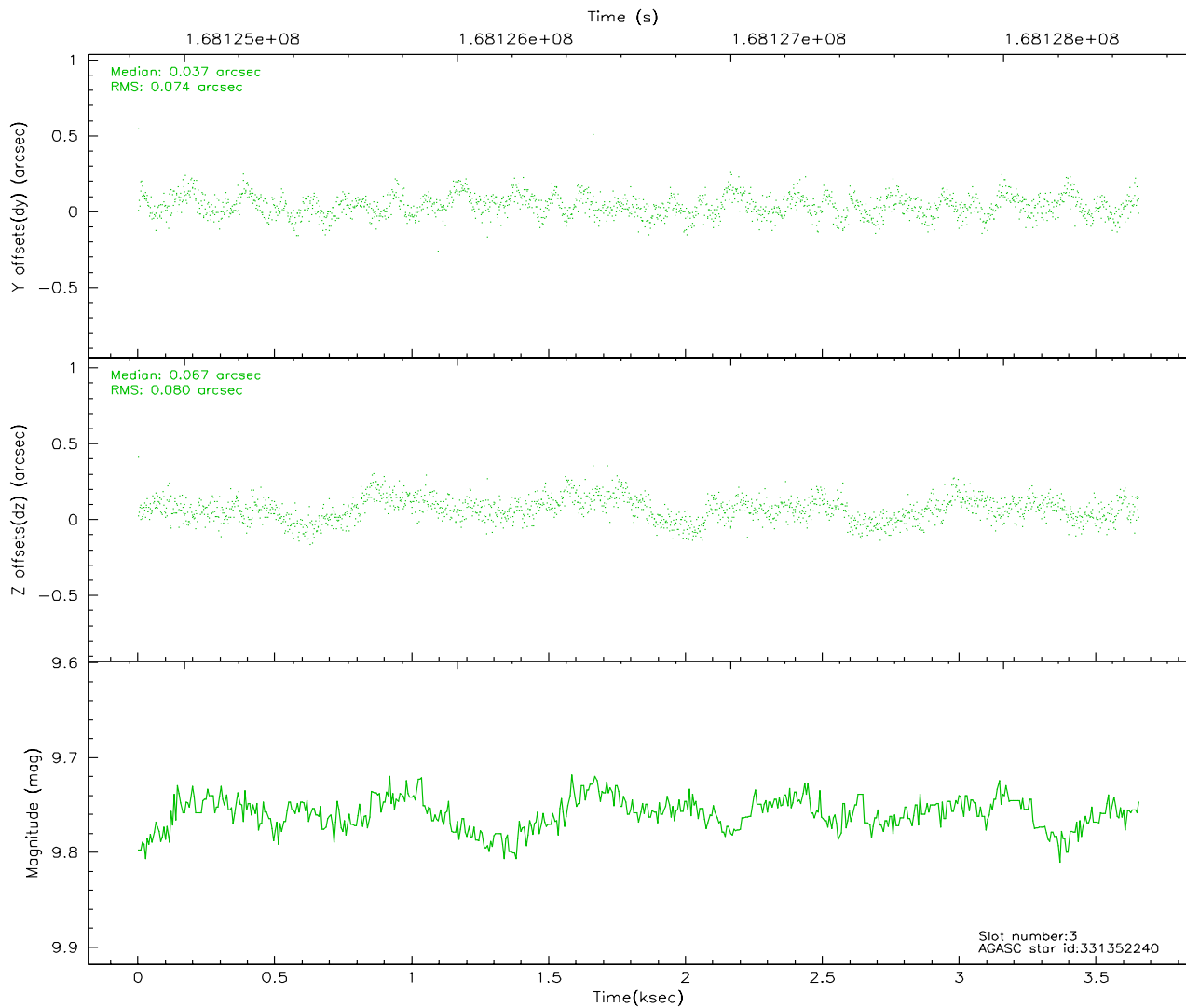
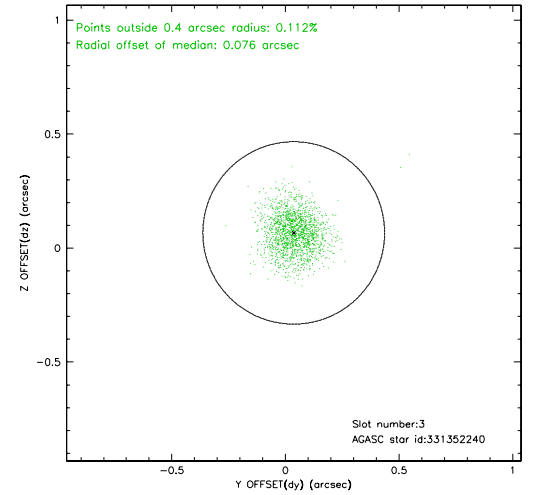
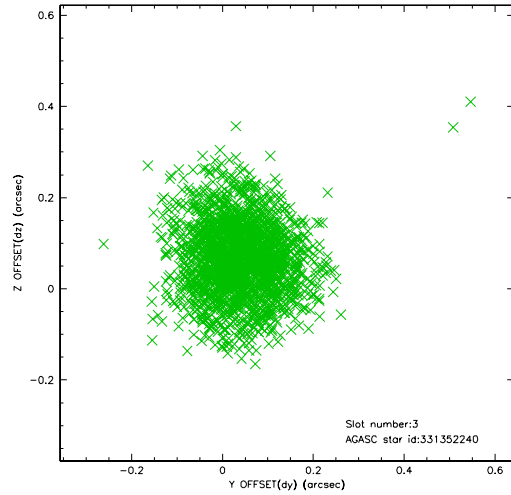
### Slot Statistics

slot	status	id	mag	n_pts	med_dy	med_dz	dr1	dr2	ra	dec	mean_y	mean_z
0	FID	ACIS-S-2	7.11	892	-0.007	0.015	0.006	0.011	0.000000	0.000000	-754.97	-1729.10
1	FID	ACIS-S-4	7.20	892	-0.065	-0.000	0.005	0.009	0.000000	0.000000	2157.48	177.57
2	FID	ACIS-S-5	7.24	892	0.041	-0.005	0.006	0.010	0.000000	0.000000	-1805.54	173.22
3	GUIDE	331352240	9.76	1781	0.037	0.067	0.116	0.187	187.107373	31.931271	364.92	1252.99
4	GUIDE	331357536	9.95	1784	-0.001	-0.061	0.140	0.235	187.342382	32.394702	-1205.65	343.28
5	GUIDE	331361176	9.10	1784	0.031	0.014	0.076	0.127	186.962232	32.473066	-449.08	-573.58
6	GUIDE	331362384	8.79	1784	-0.147	0.031	0.071	0.114	187.227369	32.923477	-2062.59	-1393.18
7	GUIDE	331358504	10.03	1783	0.075	-0.050	0.105	0.169	187.176246	32.923361	-1939.26	-1485.79

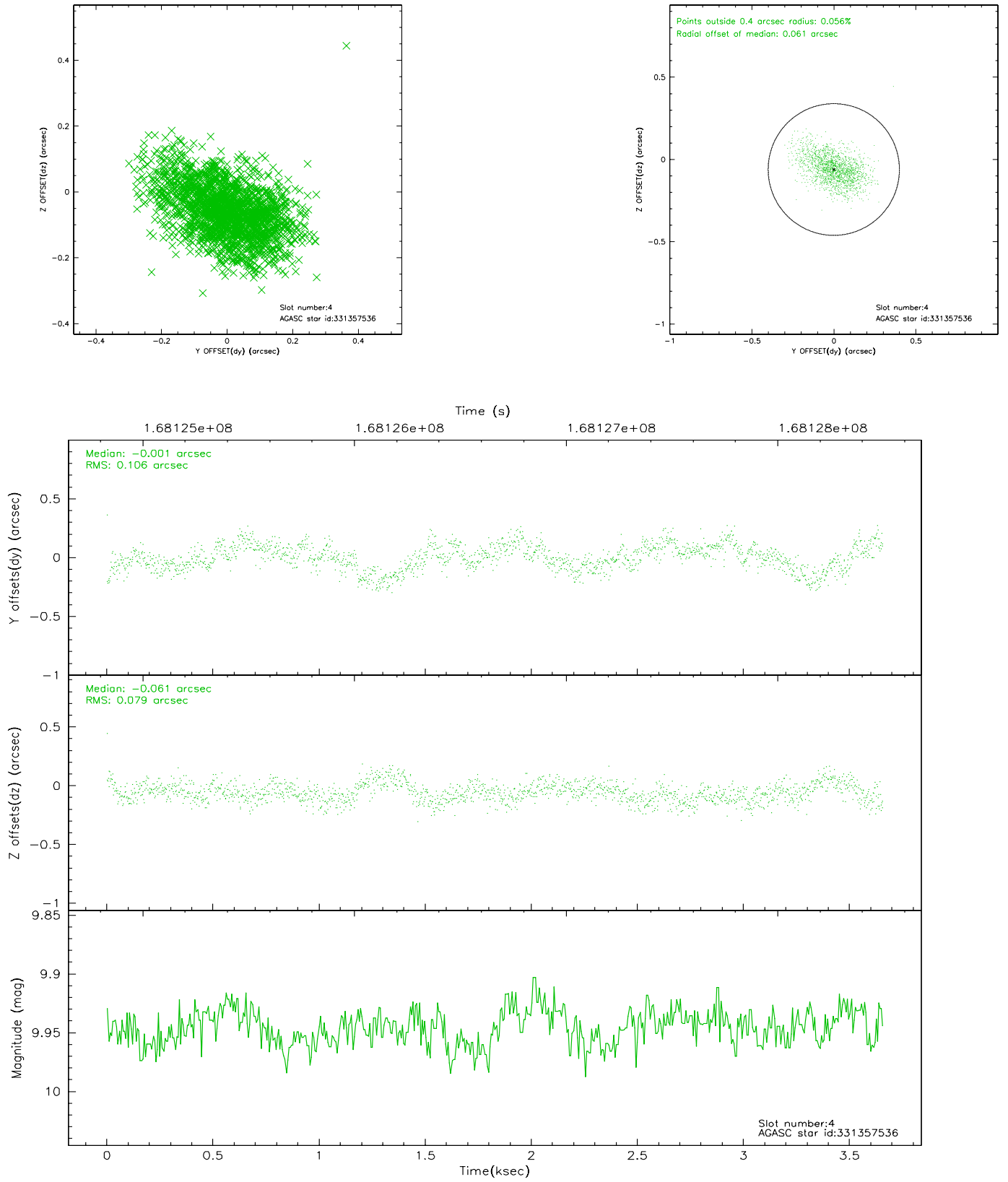


## 2.4 Star Slots

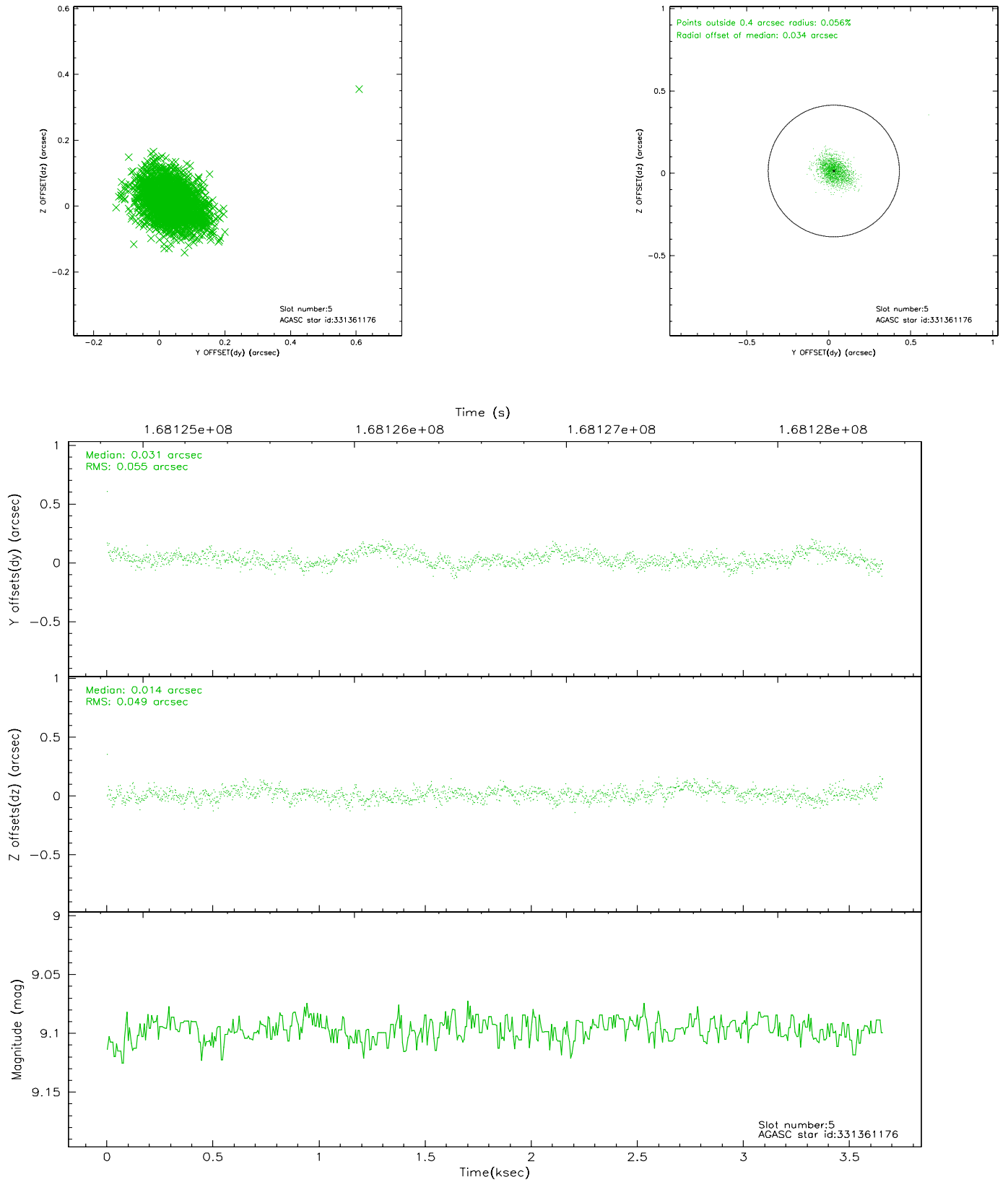
### 2.4.1 Slot 3



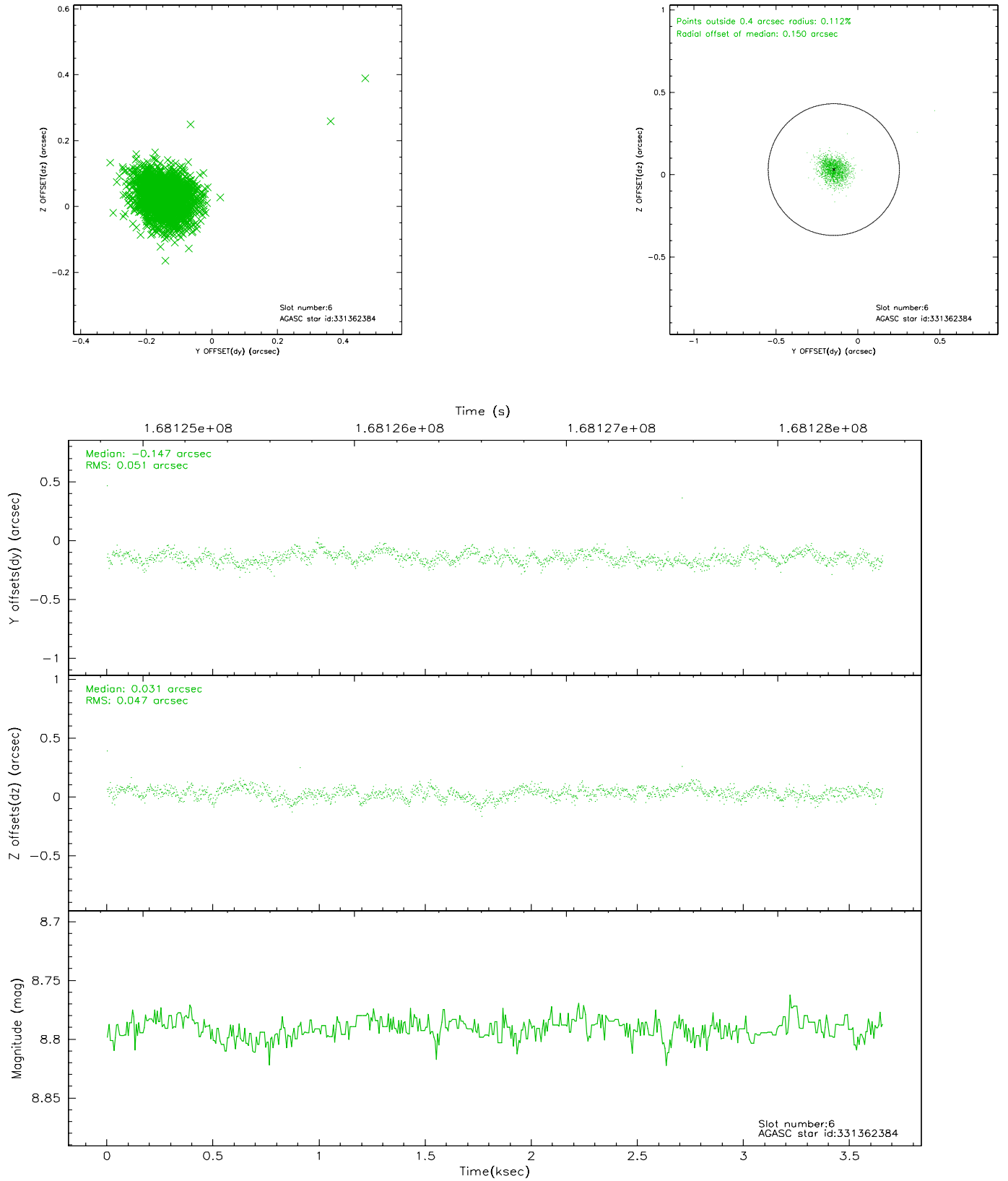
## 2.4.2 Slot 4



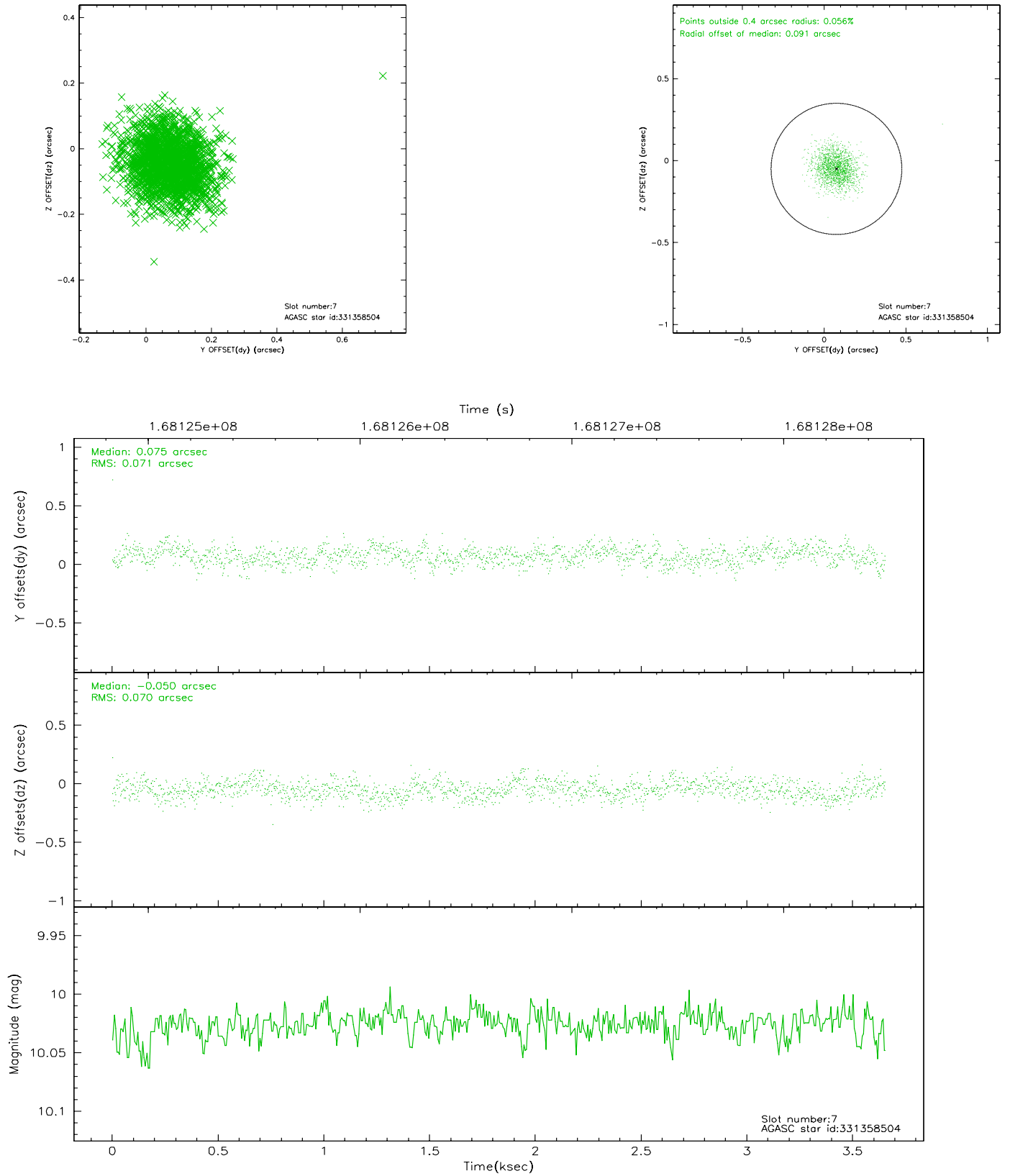
### 2.4.3 Slot 5



## 2.4.4 Slot 6

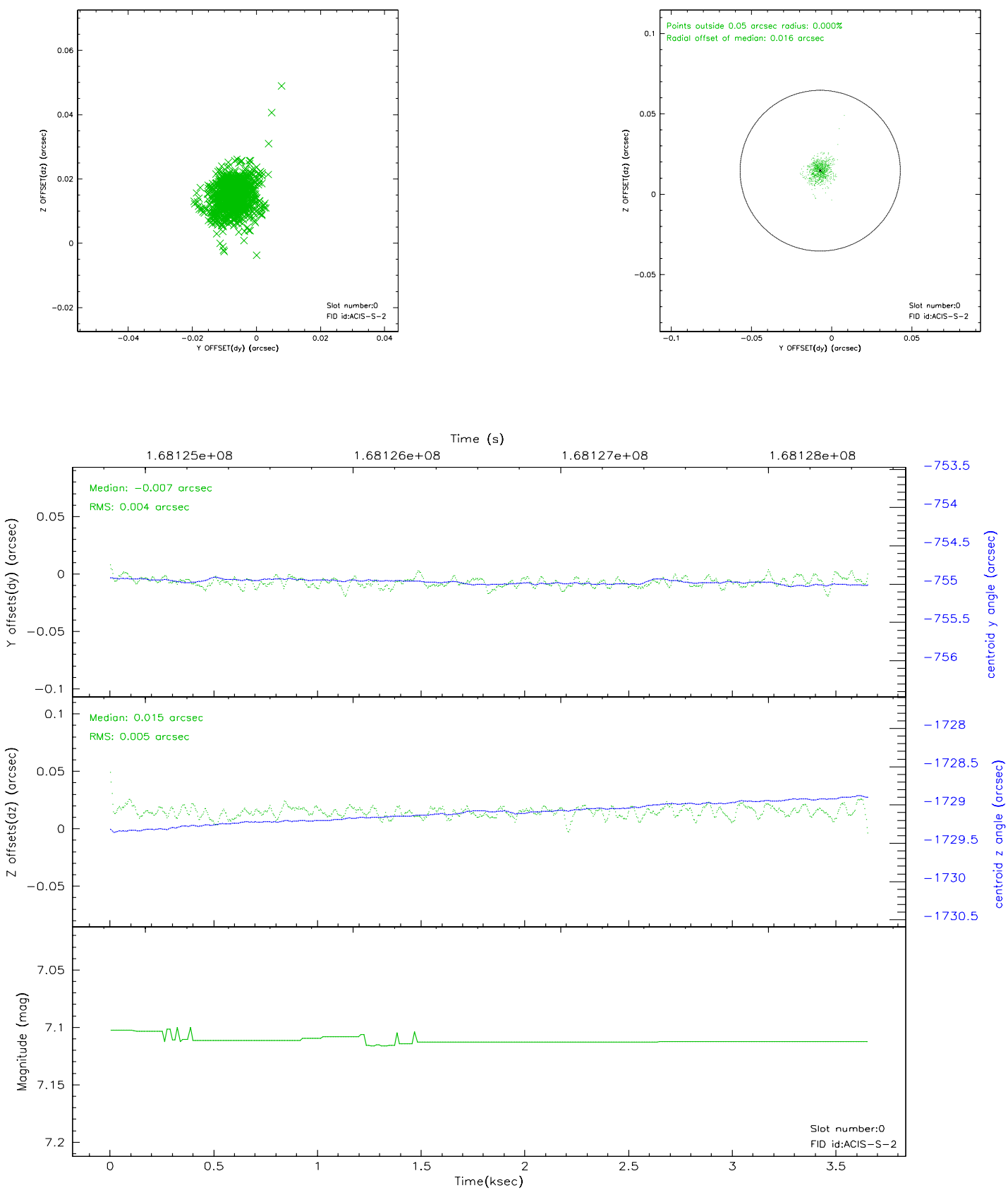


## 2.4.5 Slot 7

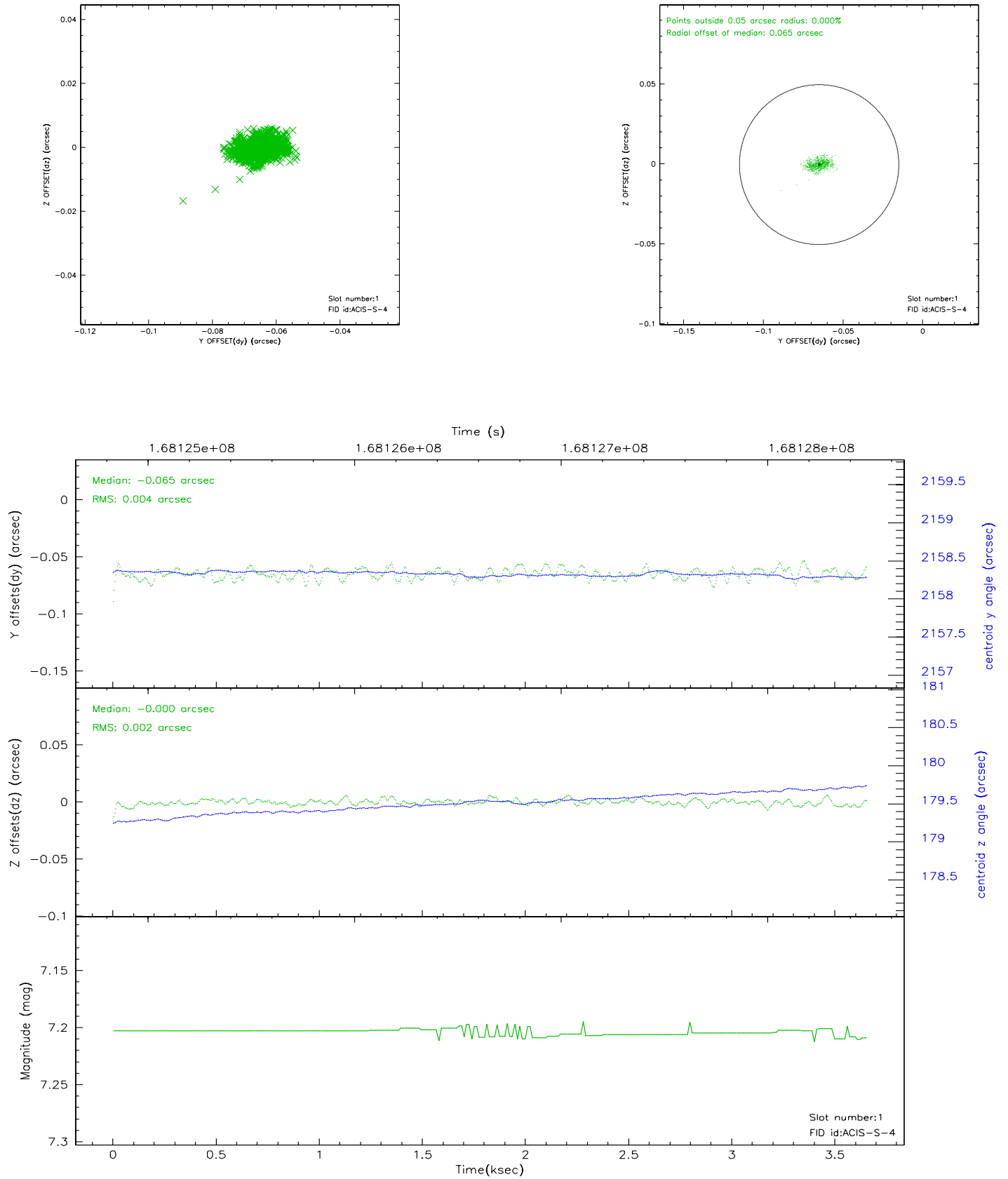


## 2.5 FID Slots

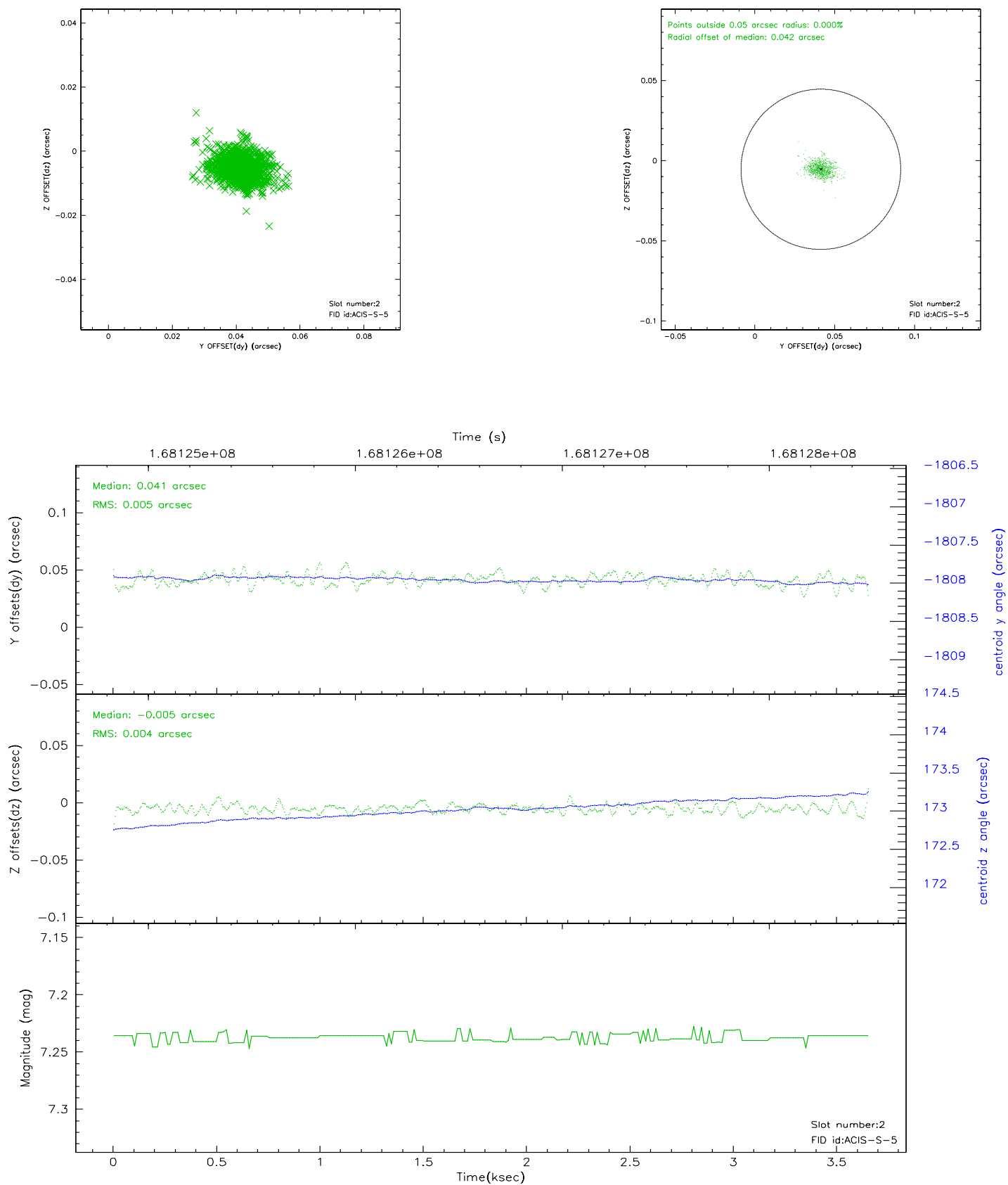
### 2.5.1 Slot 0



## 2.5.2 Slot 1



### 2.5.3 Slot 2





### 3 Point Sources

## A Summary

### A.1 Status

V&V Scientist	Jen Lauer
V&V Date (YYYY-MM-DD)	2006.08.01
V&V Edition	1
V&V Disposition and Status	OK
V&V Charge Time	3.654

### A.2 Comments