

# V&V Reference Report

## L2 ASCDS Version : 7.6.8

Observation 4135 - L2 Version 001  
Chandra X-Ray Center

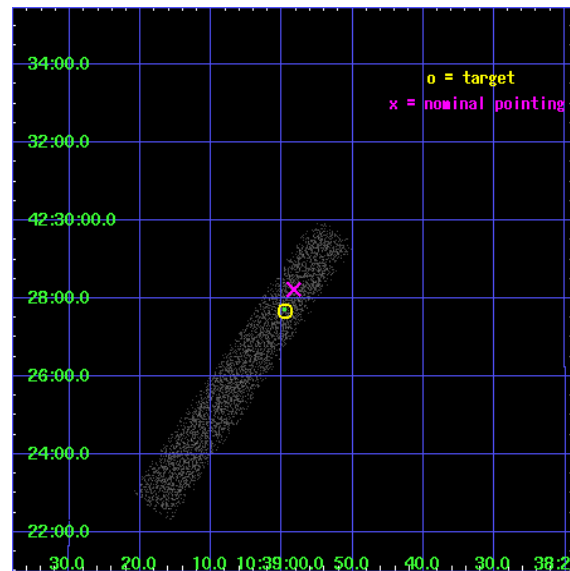
L2 Processing Date : Jul 19 2006

## Contents

<b>1</b>	<b>Front</b>	<b>2</b>
<b>2</b>	<b>OBI</b>	<b>3</b>
2.1	OBI . . . . .	3
2.1.1	Images . . . . .	3
2.1.2	Bias . . . . .	3
2.1.3	Parameters . . . . .	4
2.1.4	Events . . . . .	4
2.2	Compared Parameters . . . . .	5
2.3	Aspect . . . . .	6
2.4	Star Slots . . . . .	9
2.4.1	Slot 3 . . . . .	9
2.4.2	Slot 4 . . . . .	10
2.4.3	Slot 5 . . . . .	11
2.4.4	Slot 6 . . . . .	12
2.4.5	Slot 7 . . . . .	13
2.5	FID Slots . . . . .	14
2.5.1	Slot 0 . . . . .	14
2.5.2	Slot 1 . . . . .	15
2.5.3	Slot 2 . . . . .	16
<b>3</b>	<b>Point Sources</b>	<b>17</b>
<b>A</b>	<b>Summary</b>	<b>18</b>
A.1	Status . . . . .	18
A.2	Comments . . . . .	18

# 1 Front

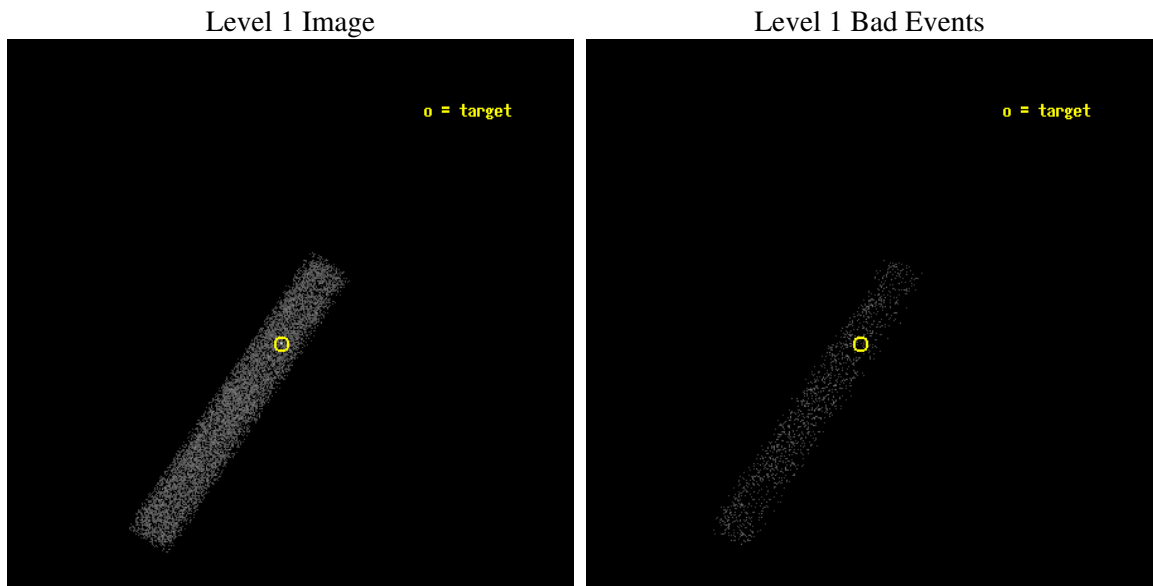
seq_num	700814
obs_id	4135
title	CHANDRA OBSERVATIONS OF THE FIRST SAMPLE OF RADIO-LOUD NARROW LINE SEYFERT I GALAXIES
observer	Dr. Sally Laurent-Muehleisen
object	FIRST J103859+422742
dtcycle	0
cycle	P
ra_targ	159.748333
dec_targ	42.461667
ra_nom	159.74302055091
dec_nom	42.470542789586
roll_nom	123.86257041715
revision	2
ontime	10714.000159651
livetime	9717.0326135054
ontime7	10714.000159651
l2events	4940



## 2 OBI

### 2.1 OBI

#### 2.1.1 Images



#### 2.1.2 Bias

Chip 7



### 2.1.3 Parameters

obi_num	0
ascdsver	7.6.8
caldsver	3.2.2
date	2006-07-19T13:18:53
revision	2

sched_exp_time	10000.000000
ontime	10859.174885273
ontime7	10859.174885273
l1events	11401

### 2.1.4 Events

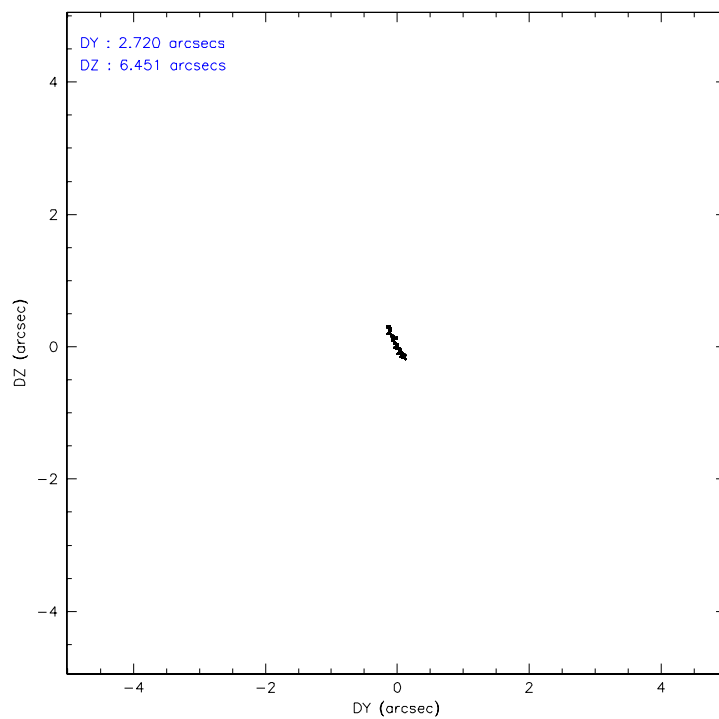
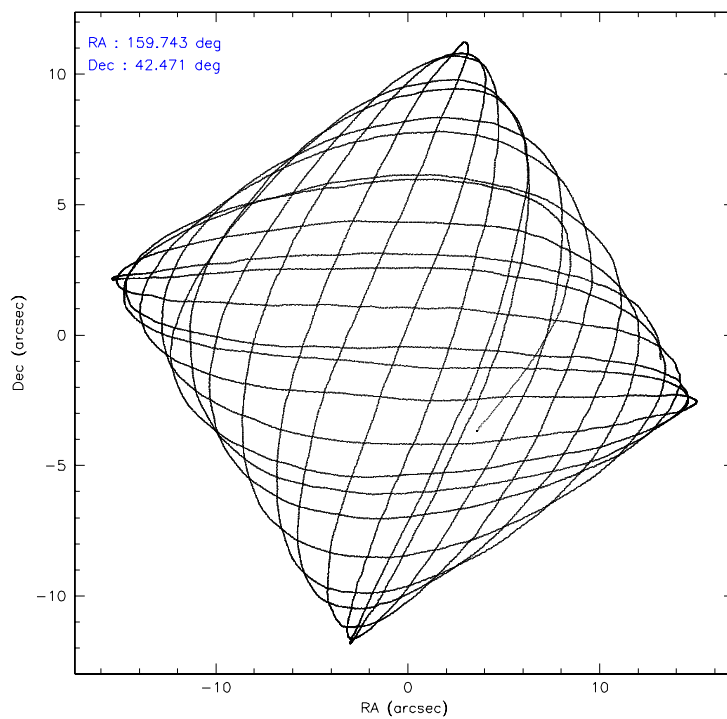
	<b>ccd 7</b>
level 1 events	11401
rejected events	6248
rejected %	54%

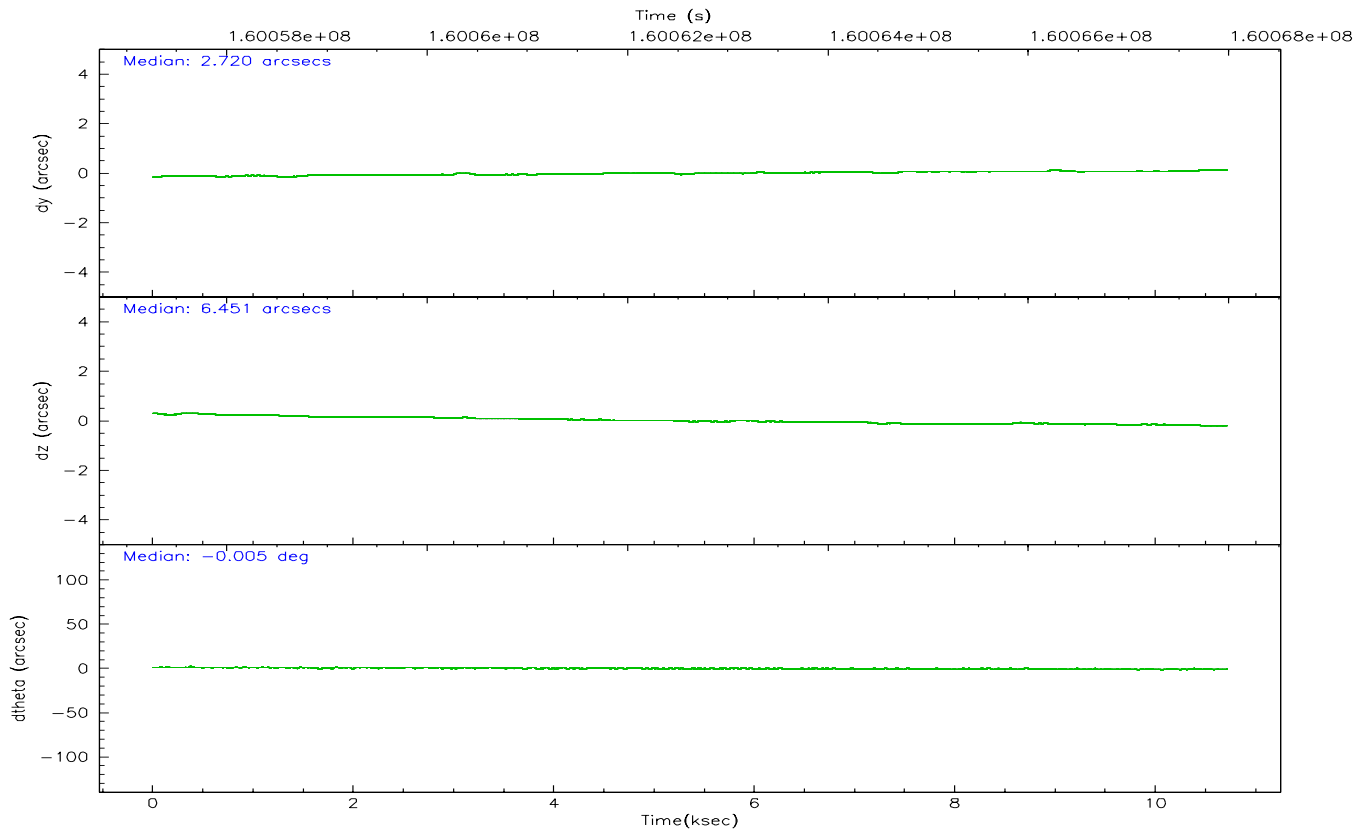
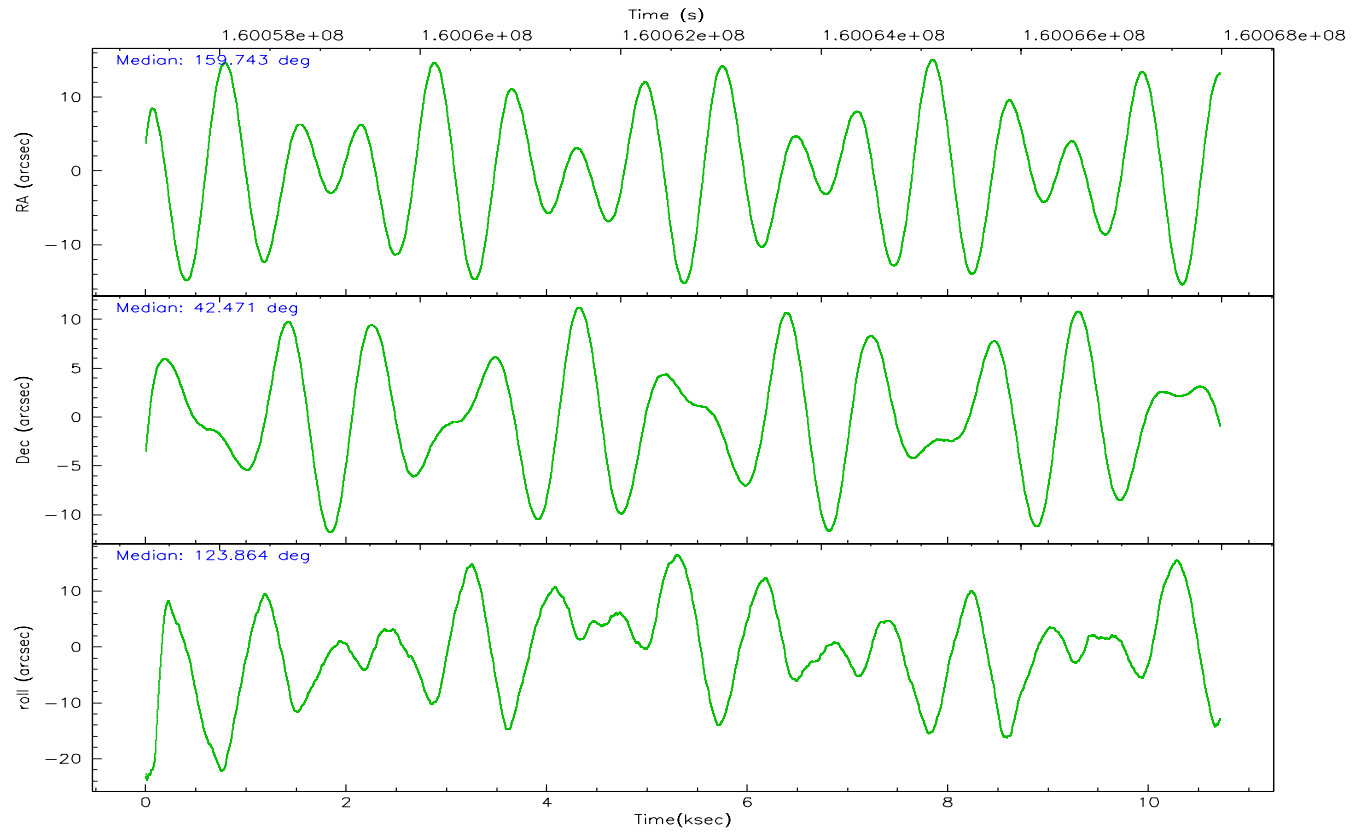
	<b>ccd 7</b>
grade 0 events	469
	4%
grade 1 events	11
	0%
grade 2 events	1195
	10%
grade 3 events	527
	4%
grade 4 events	535
	4%
grade 5 events	803
	7%
grade 6 events	2478
	21%
grade 7 events	5383
	47%

## 2.2 Compared Parameters

Parameter	Planned	Actual	Parameter	Planned	Actual
Instrument	ACIS	ACIS	Obspar format version number	6	6
Detector	ACIS-7	ACIS-7	Obspar file type	PREDICTED	ACTUAL
Grating	NONE	NONE	Obspar update status	NONE	UPDATED
Data mode	FAINT	FAINT	On-chip summing requested	N	N
Observation mode	POINTING	POINTING	Subarray requested	1/8	1/8
Pointing RA	159.776409	159.7430205509085	Subarray start row	0	449
Pointing Dec	42.458845	42.47054278958619	Subarray row count	1024	128
Pointing Roll	123.683398	123.8625704171483	Alternating exposures requested	N	N
SIM focus pos (mm)	-0.684267	-0.6828225247311905	Primary exposure time	0.000000	0.4
SIM defocus (mm)	0	0.001444936568705701			
SIM translation stage pos (mm)	-190.132523	-190.1425803651734			
SIM translation stage offset (mm)	0	0.01005778216563158			
Observation start time	160057981.184000	160056755.56312			
Observation start date	2003-01-27T12:31:57	2003-01-27T12:12:35			
Observation end time	160067981.184000	160068495.40111			
Observation end date	2003-01-27T15:18:37	2003-01-27T15:28:15			
Read mode	TIMED	TIMED			

## 2.3 Aspect





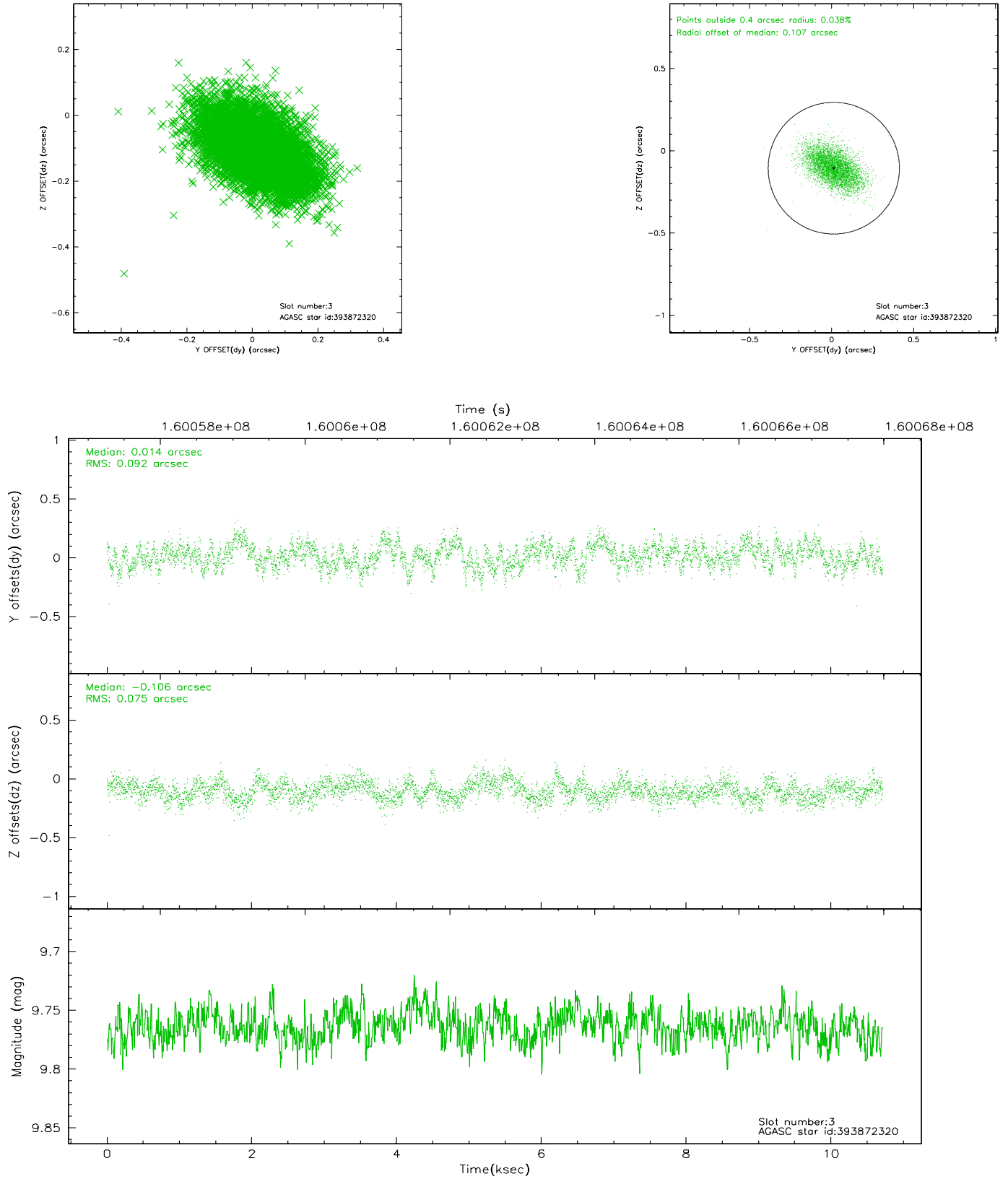
### Slot Statistics

slot	status	id	mag	n_pts	med_dy	med_dz	dr1	dr2	ra	dec	mean_y	mean_z
0	FID	ACIS-S-2	7.11	2614	-0.026	0.027	0.008	0.014	0.000000	0.000000	-755.34	-1727.56
1	FID	ACIS-S-4	7.20	2614	-0.045	0.005	0.008	0.014	0.000000	0.000000	2157.66	180.46
2	FID	ACIS-S-5	7.24	2614	0.040	-0.023	0.006	0.010	0.000000	0.000000	-1807.53	174.58
3	GUIDE	393872320	9.76	5221	0.014	-0.106	0.125	0.208	159.885953	41.990128	-1566.43	691.97
4	GUIDE	393873656	10.14	5222	0.006	-0.054	0.164	0.285	159.925292	42.201995	-989.59	182.55
5	GUIDE	394265432	10.30	5206	-0.001	0.107	0.168	0.284	159.834089	42.842881	1065.90	-893.14
6	GUIDE	394267688	10.17	5222	0.003	-0.067	0.238	0.349	159.395885	42.745124	1417.47	264.47
7	GUIDE	394670848	7.73	5227	0.008	0.123	0.072	0.118	160.950096	42.374309	-1966.21	-2440.16

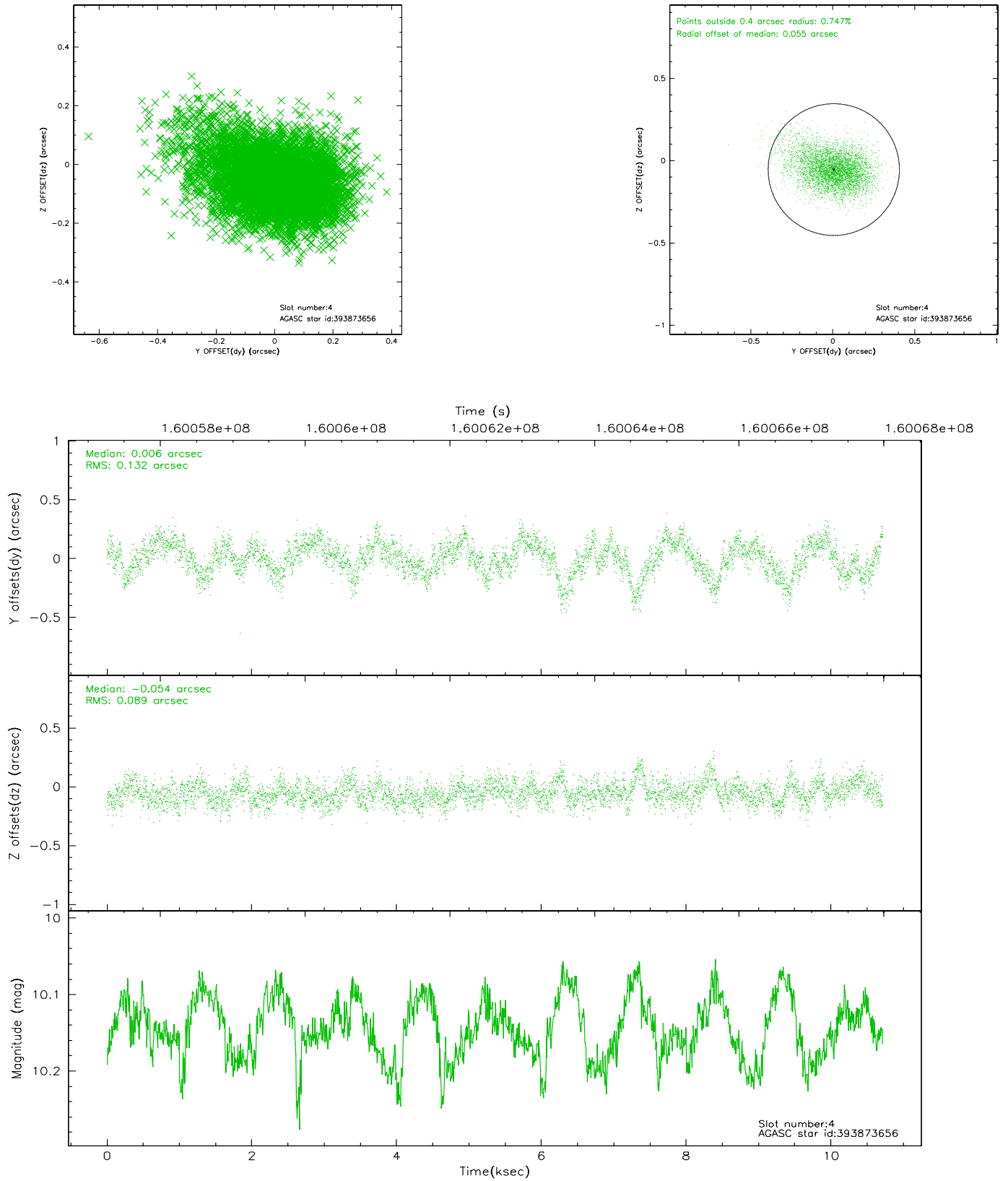


## 2.4 Star Slots

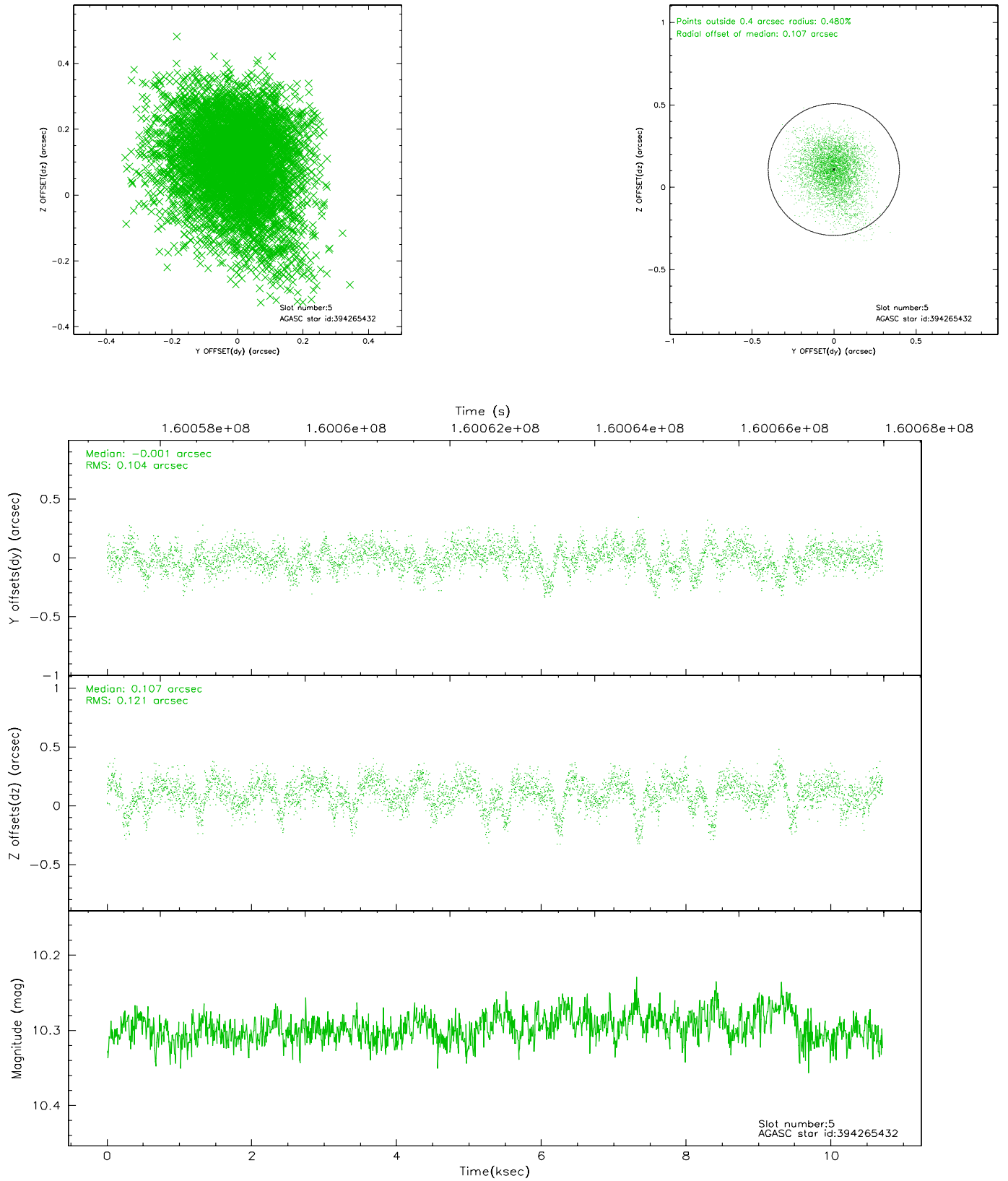
### 2.4.1 Slot 3



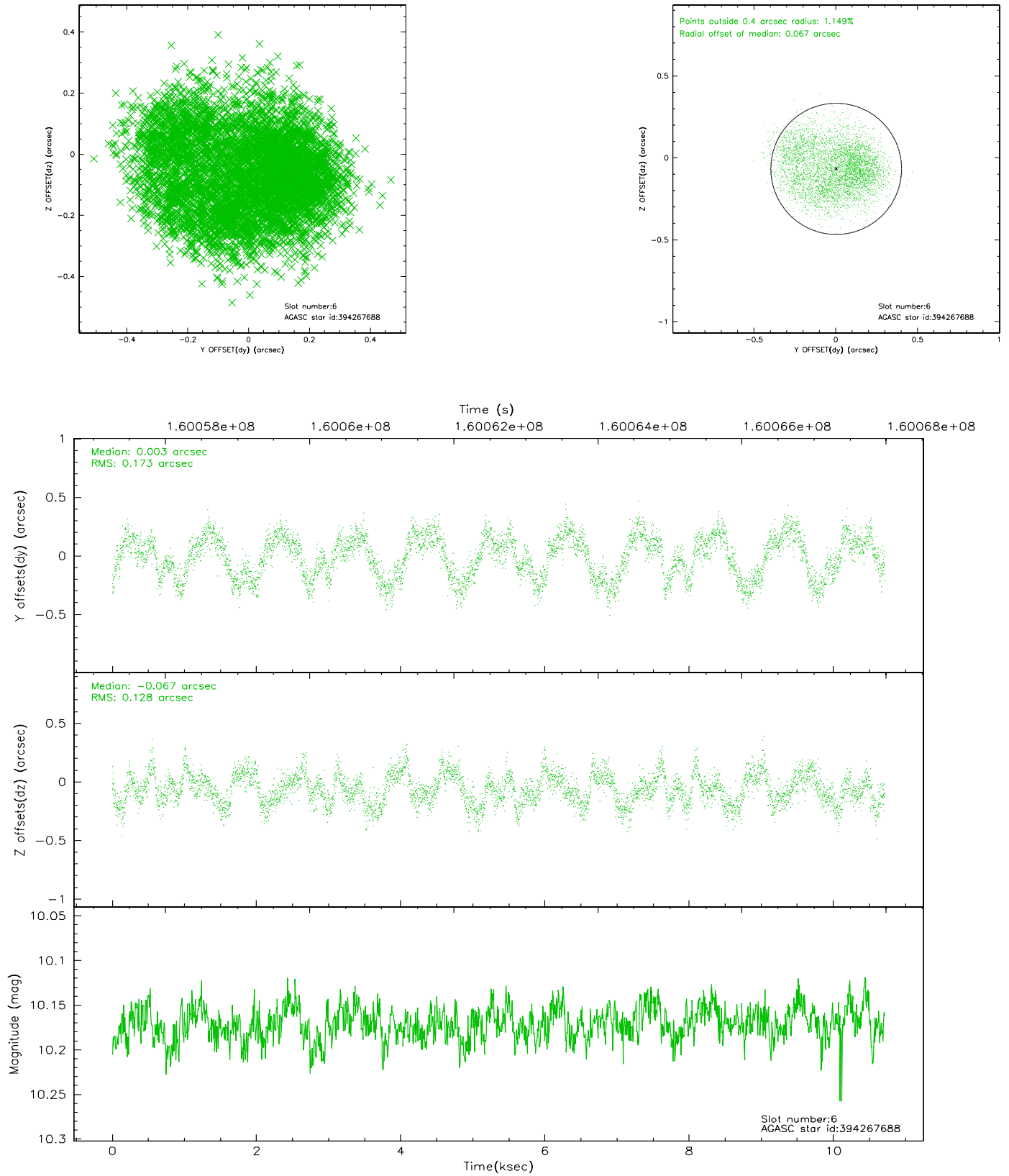
## 2.4.2 Slot 4



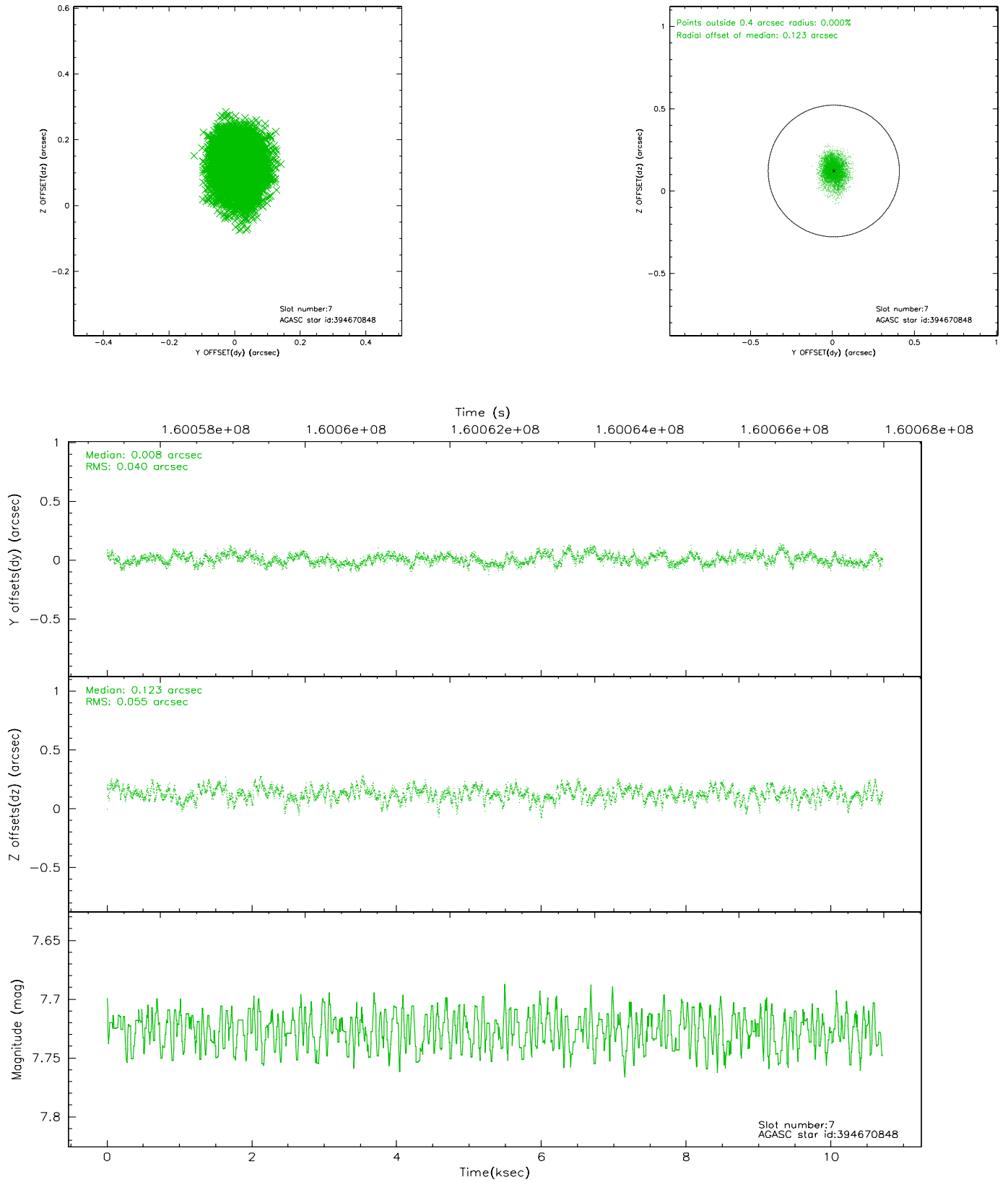
### 2.4.3 Slot 5



## 2.4.4 Slot 6

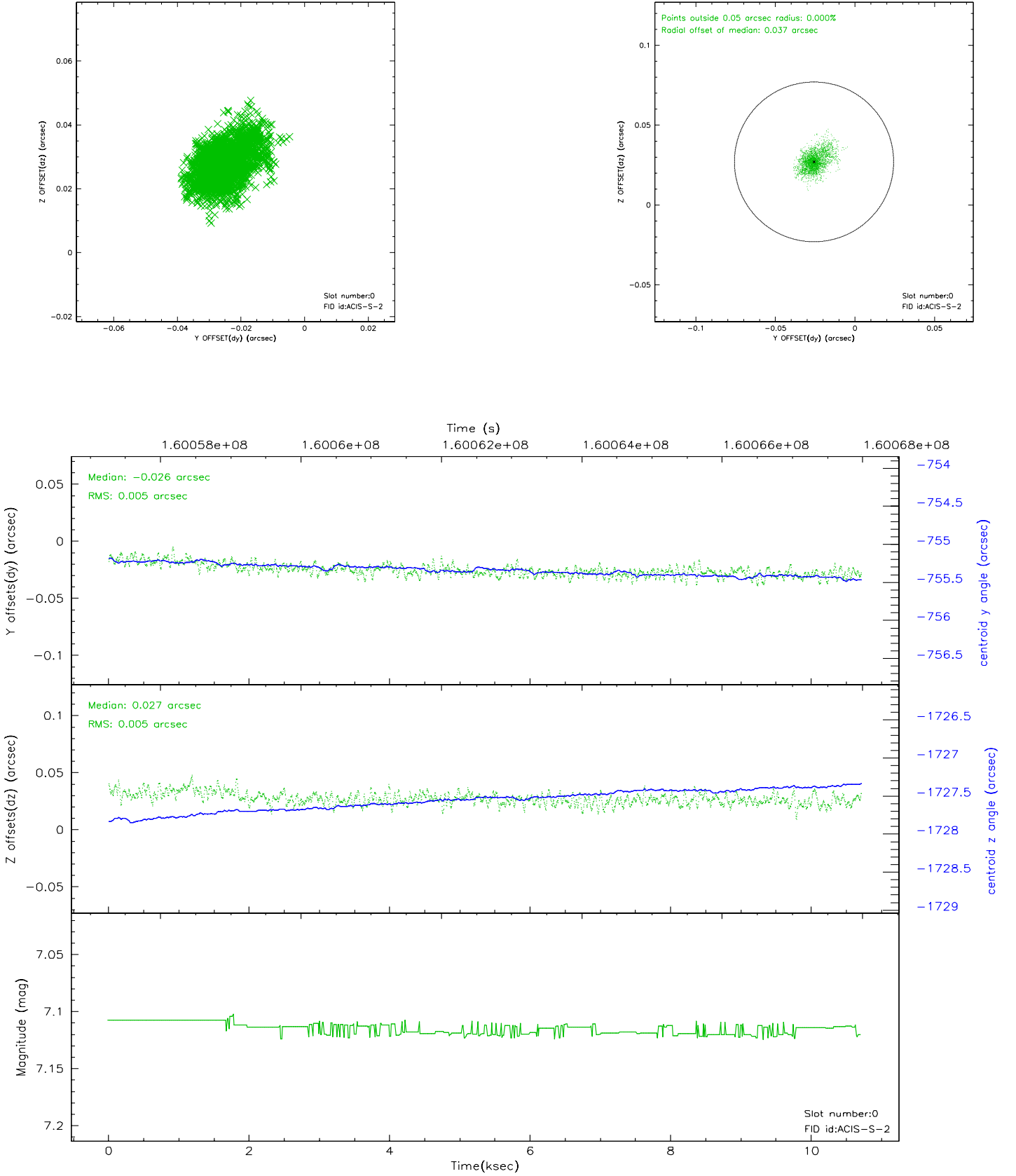


## 2.4.5 Slot 7

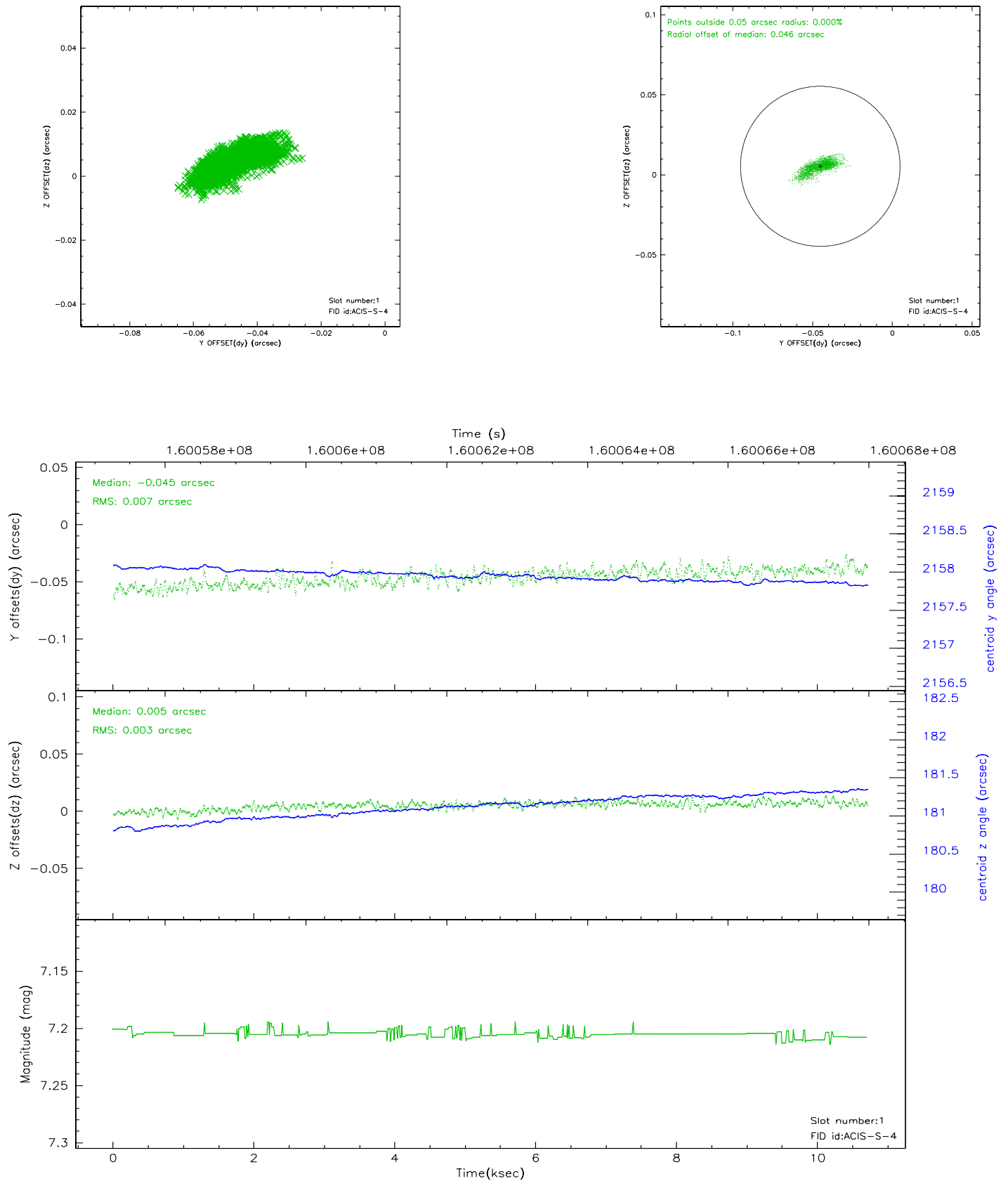


## 2.5 FID Slots

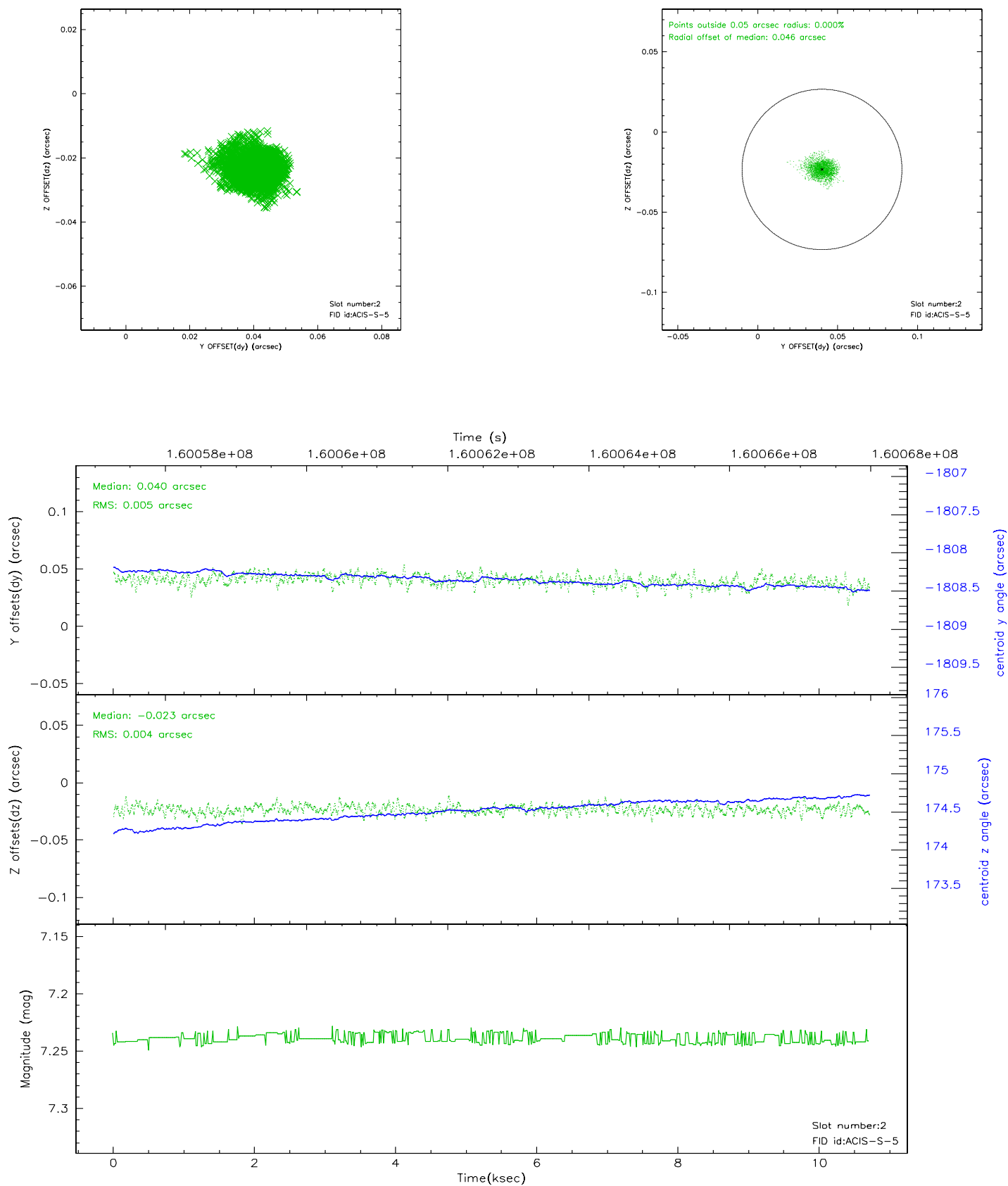
### 2.5.1 Slot 0



## 2.5.2 Slot 1



### 2.5.3 Slot 2





### 3 Point Sources

## A Summary

### A.1 Status

V&V Scientist	Beth Sundheim
V&V Date (YYYY-MM-DD)	2006.07.19
V&V Edition	1
V&V Disposition and Status	OK
V&V Charge Time	10.714

### A.2 Comments