

# V&V Reference Report

## L2 ASCDS Version : 7.6.9

Observation 4133 - L2 Version 001  
Chandra X-Ray Center

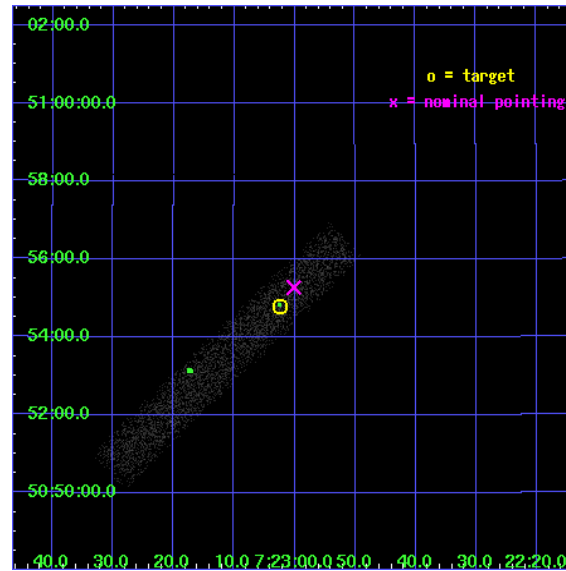
L2 Processing Date : Oct 15 2006

## Contents

<b>1</b>	<b>Front</b>	<b>2</b>
<b>2</b>	<b>OBI</b>	<b>3</b>
2.1	OBI . . . . .	3
2.1.1	Images . . . . .	3
2.1.2	Bias . . . . .	3
2.1.3	Parameters . . . . .	4
2.1.4	Events . . . . .	4
2.2	Compared Parameters . . . . .	5
2.3	Aspect . . . . .	6
2.4	Star Slots . . . . .	9
2.4.1	Slot 3 . . . . .	9
2.4.2	Slot 4 . . . . .	10
2.4.3	Slot 5 . . . . .	11
2.4.4	Slot 6 . . . . .	12
2.4.5	Slot 7 . . . . .	13
2.5	FID Slots . . . . .	14
2.5.1	Slot 0 . . . . .	14
2.5.2	Slot 1 . . . . .	15
2.5.3	Slot 2 . . . . .	16
<b>3</b>	<b>Point Sources</b>	<b>17</b>
<b>A</b>	<b>Summary</b>	<b>18</b>
A.1	Status . . . . .	18
A.2	Comments . . . . .	18

# 1 Front

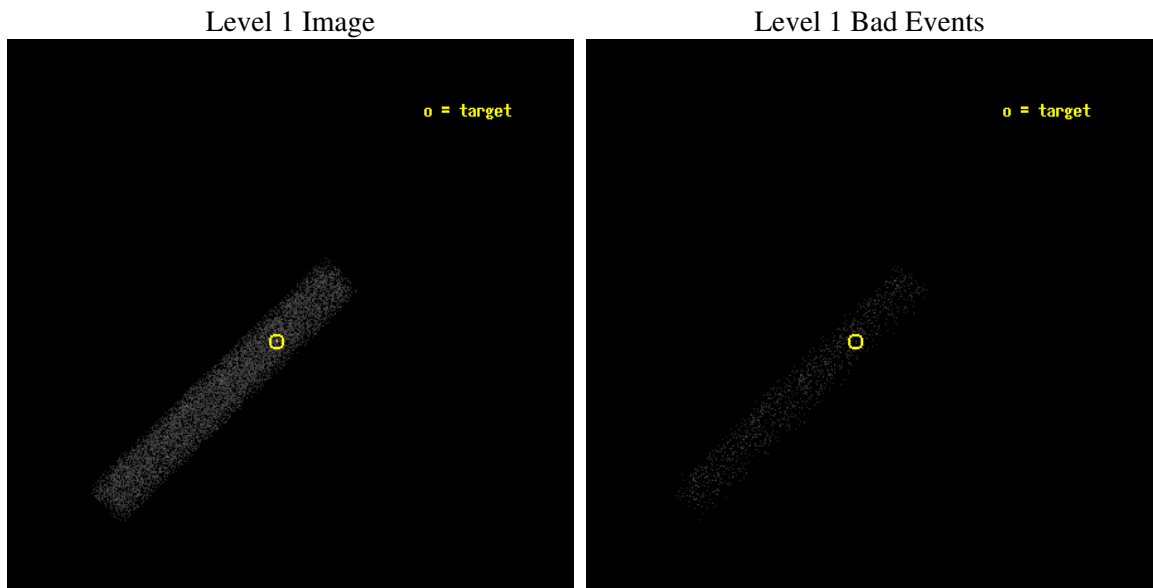
seq_num	700812
obs_id	4133
title	CHANDRA OBSERVATIONS OF THE FIRST SAMPLE OF RADIO-LOUD NARROW LINE SEYFERT I GALAXIES
observer	Dr. Sally Laurent-Muehleisen
object	FIRST J072302+505448
dtcycle	0
cycle	P
ra_targ	110.759583
dec_targ	50.913333
ra_nom	110.75054327552
dec_nom	50.92111410912
roll_nom	136.03812667646
revision	2
ontime	10107.600150615
livetime	9167.0598137266
ontime7	10107.600150615
l2events	4933



## 2 OBI

### 2.1 OBI

#### 2.1.1 Images



#### 2.1.2 Bias

Chip 7



### 2.1.3 Parameters

obi_num	0
ascdsver	7.6.9
caldbver	3.2.3
date	2006-10-15T03:41:58
revision	2

sched_exp_time	9925.000000
ontime	10983.996138453
ontime7	10983.996138453
l1events	12126

### 2.1.4 Events

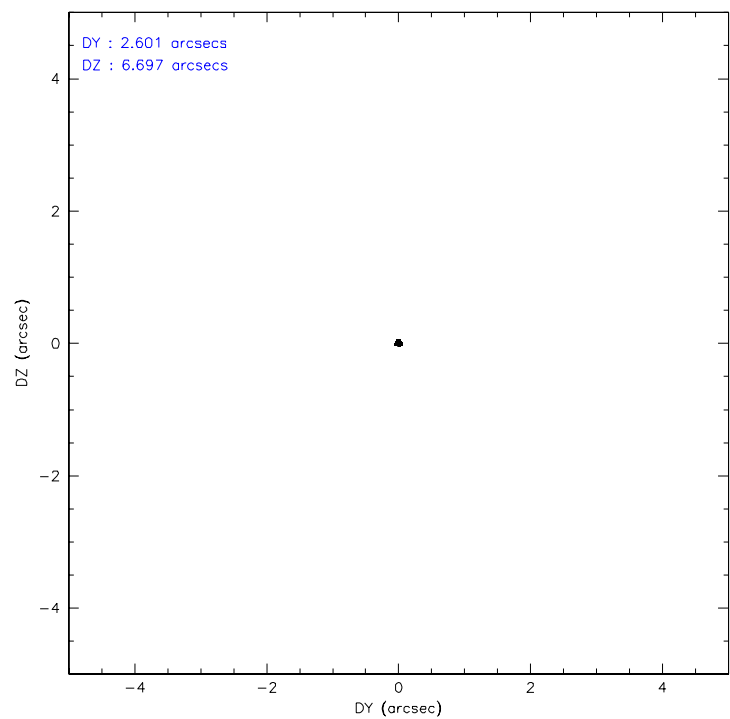
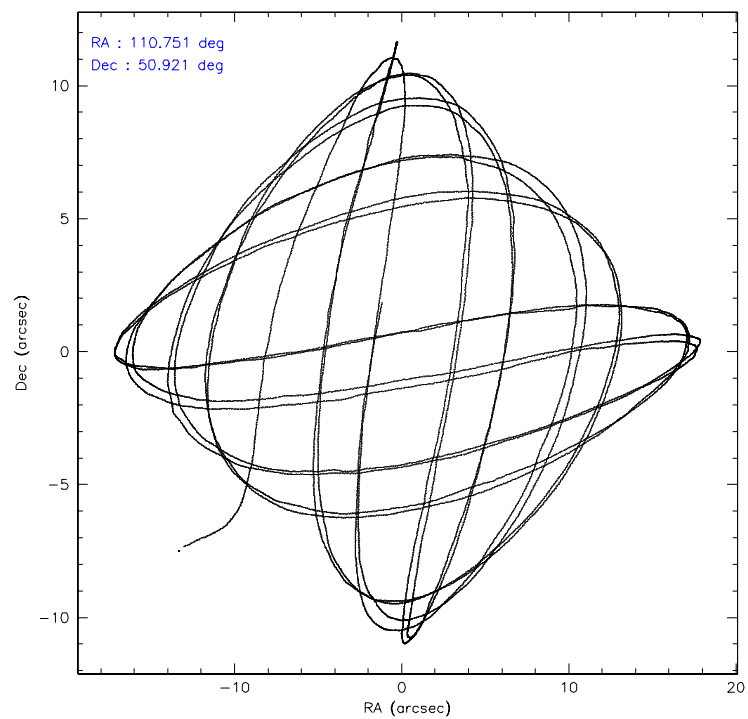
	<b>ccd 7</b>
level 1 events	12126
rejected events	7006
rejected %	57%

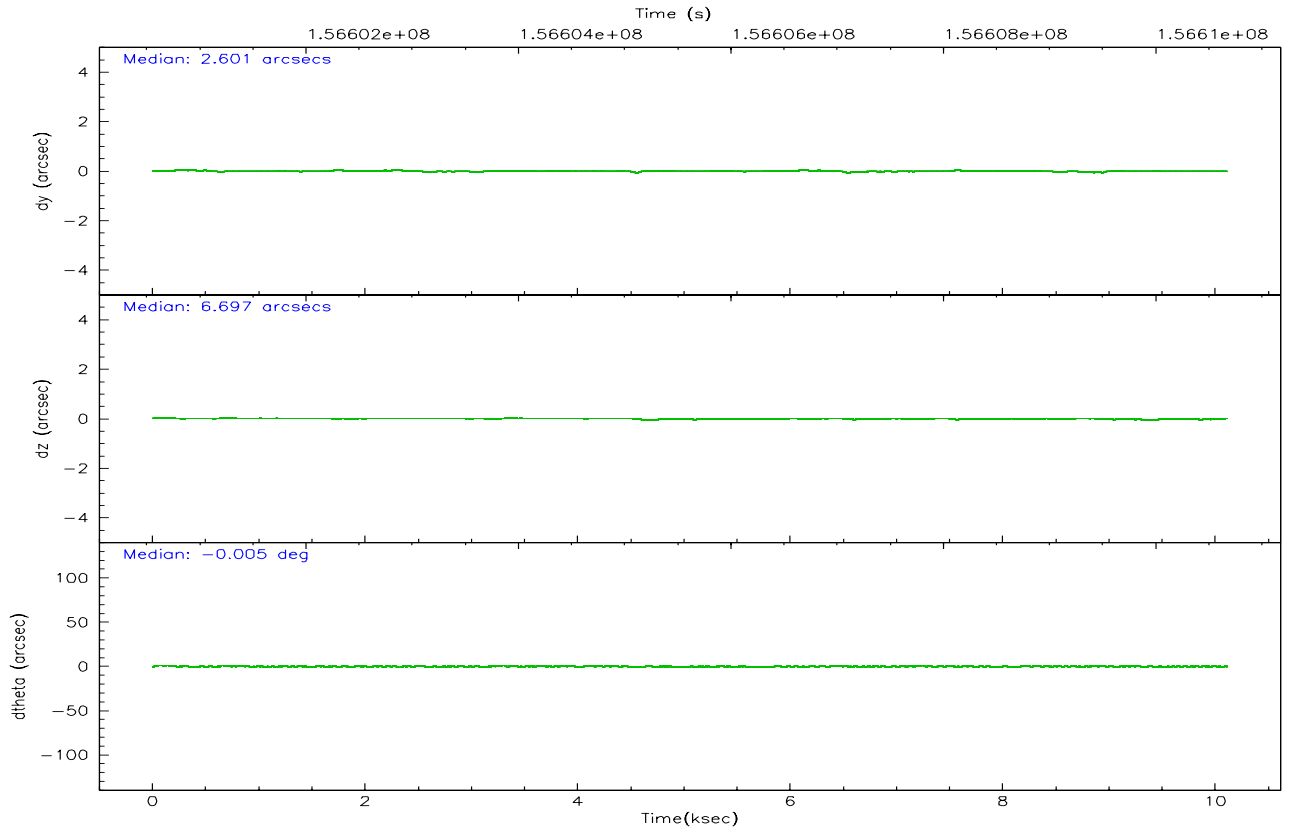
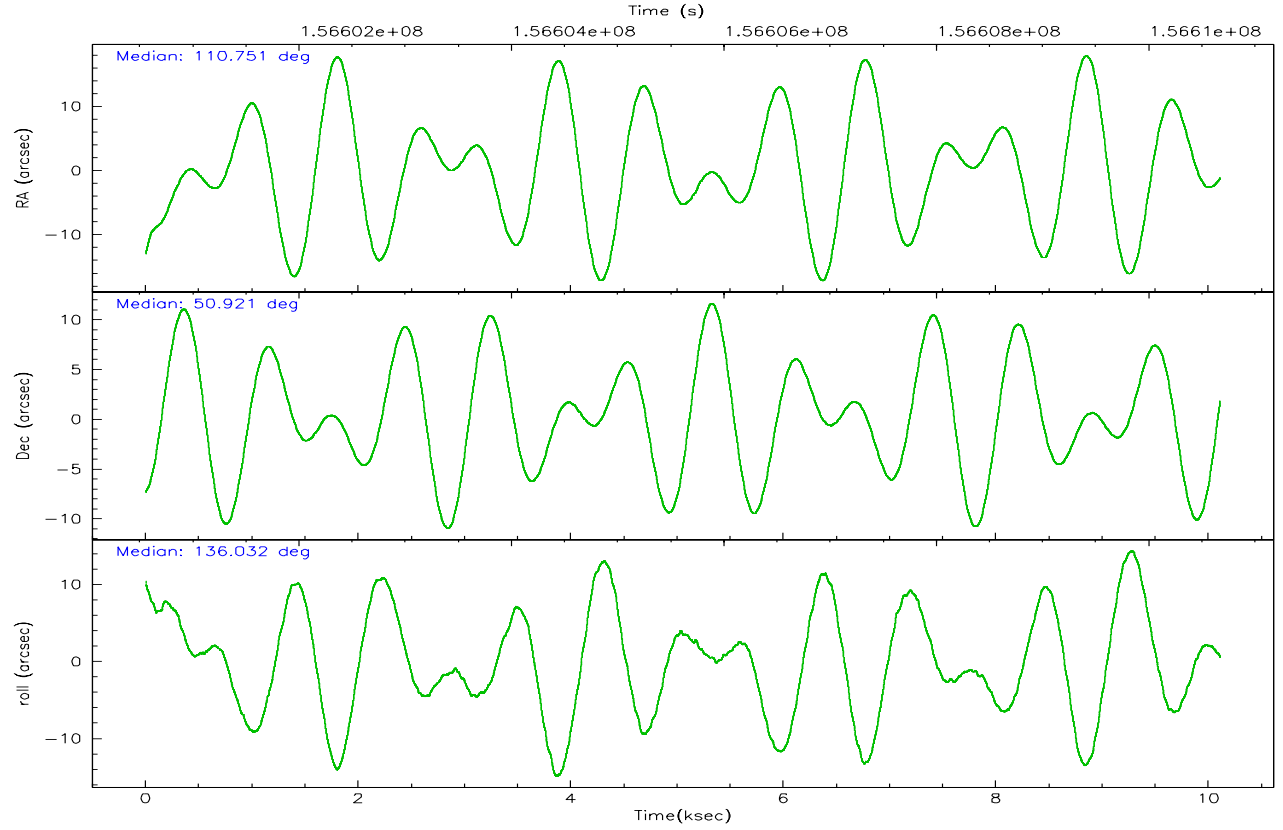
	<b>ccd 7</b>
grade 0 events	551
	4%
grade 1 events	11
	0%
grade 2 events	1229
	10%
grade 3 events	594
	4%
grade 4 events	567
	4%
grade 5 events	839
	6%
grade 6 events	2587
	21%
grade 7 events	5748
	47%

## 2.2 Compared Parameters

Parameter	Planned	Actual	Parameter	Planned	Actual
Instrument	ACIS	ACIS	Obspar format version number	6	6
Detector	ACIS-7	ACIS-7	Obspar file type	PREDICTED	ACTUAL
Grating	NONE	NONE	Obspar update status	NONE	UPDATED
Data mode	FAINT	FAINT	Number of optional ACIS chips dropped	0	0
Observation mode	POINTING	POINTING	On-chip summing requested	N	N
Pointing RA	110.792624	110.7505432755159	Subarray requested	1/8	1/8
Pointing Dec	50.914936	50.9211141091198	Subarray start row	0	449
Pointing Roll	135.848826	136.0381266764599	Subarray row count	1024	128
SIM focus pos (mm)	-0.684267	-0.6828225247311905	Alternating exposures requested	N	N
SIM defocus (mm)	0	0.001444936568705701	Primary exposure time	0.000000	0.4
SIM translation stage pos (mm)	-190.132523	-190.1400660498719			
SIM translation stage offset (mm)	0	0.00754346686406393			
Observation start time	156600748.184000	156599687.69354			
Observation start date	2002-12-18T12:11:24	2002-12-18T11:54:47			
Observation end time	156610673.184000	156611422.91903			
Observation end date	2002-12-18T14:56:49	2002-12-18T15:10:22			
Read mode	TIMED	TIMED			

## 2.3 Aspect





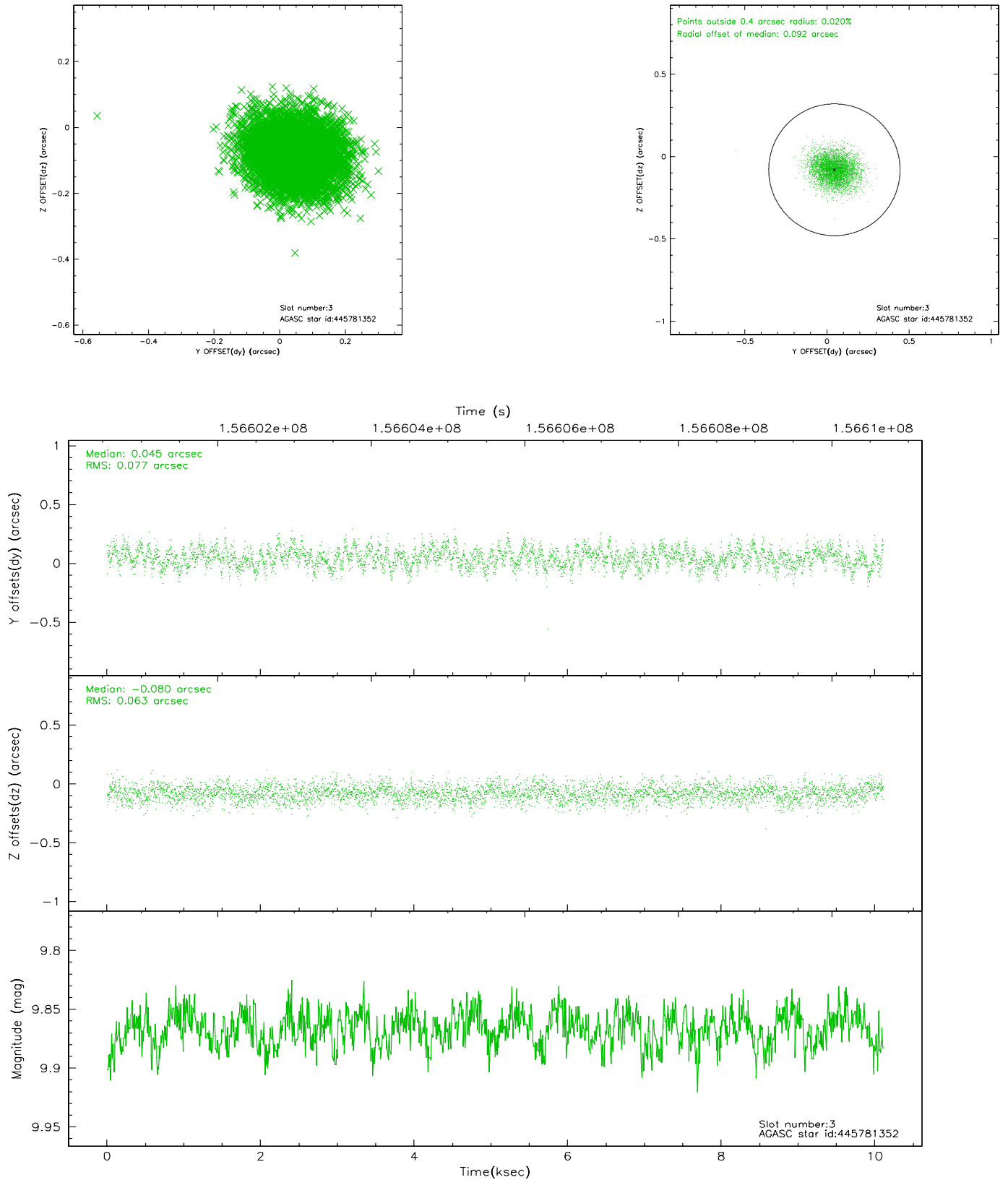
# Slot Statistics

slot	status	id	mag	n_pts	med_dy	med_dz	dr1	dr2	ra	dec	mean_y	mean_z
0	FID	ACIS-S-2	7.11	2466	-0.019	0.028	0.007	0.011	0.000000	0.000000	-755.23	-1727.83
1	FID	ACIS-S-4	7.20	2466	-0.046	0.002	0.005	0.009	0.000000	0.000000	2157.76	180.11
2	FID	ACIS-S-5	7.24	2466	0.035	-0.021	0.006	0.010	0.000000	0.000000	-1807.37	174.32
3	GUIDE	445781352	9.87	4927	0.045	-0.080	0.108	0.172	110.538585	50.366457	-955.55	1821.94
4	GUIDE	445784328	9.83	4925	0.055	-0.036	0.115	0.183	110.782555	50.504685	-1011.72	1075.77
5	GUIDE	446305232	8.76	4929	-0.117	-0.075	0.071	0.112	110.187466	50.886130	918.09	1027.67
6	GUIDE	446300504	9.26	4931	-0.018	0.101	0.077	0.124	110.558500	51.278663	1291.90	-572.69
7	GUIDE	446304296	8.85	4931	0.034	0.090	0.062	0.101	112.096507	50.834171	-2310.13	-1875.64

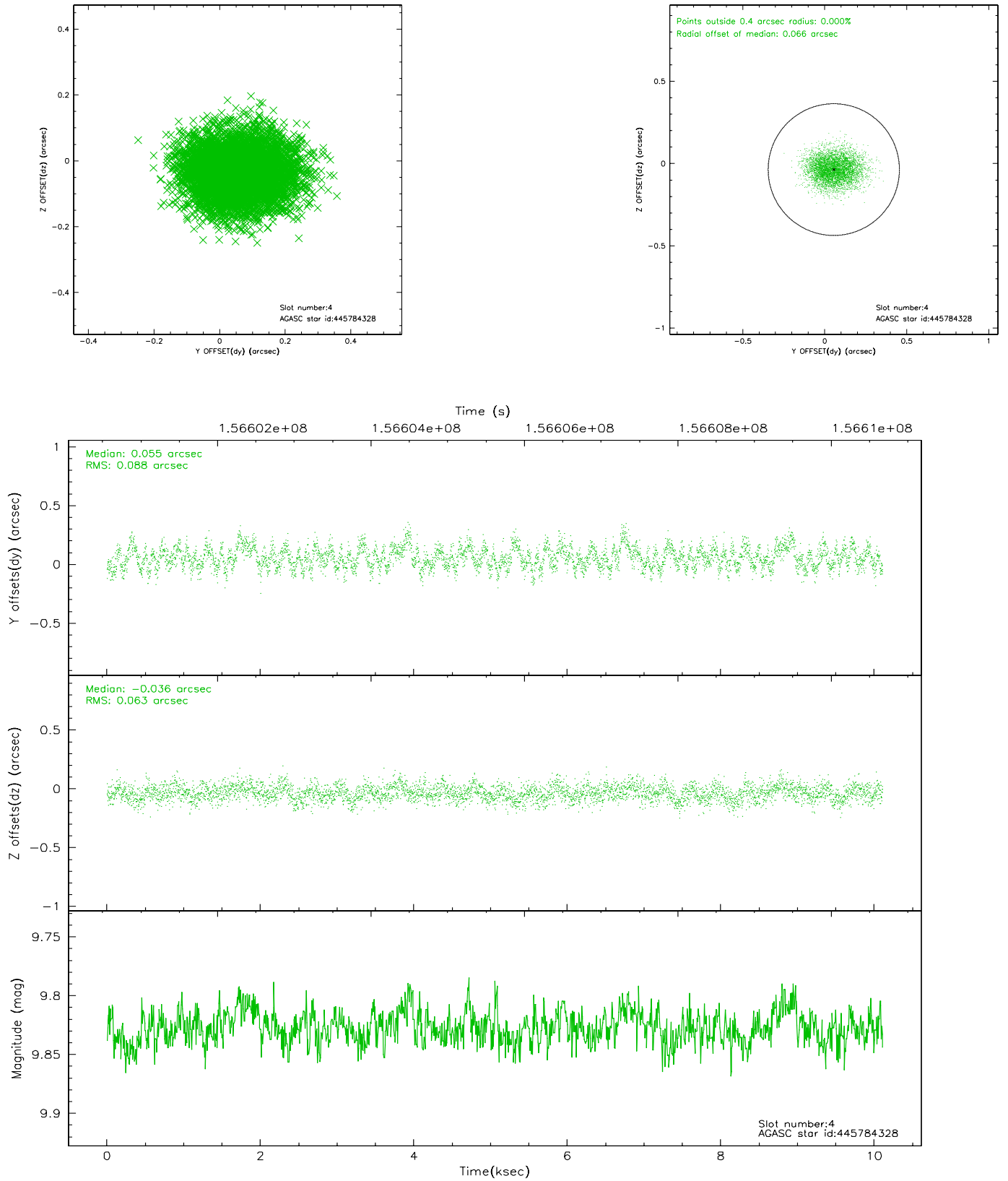


## 2.4 Star Slots

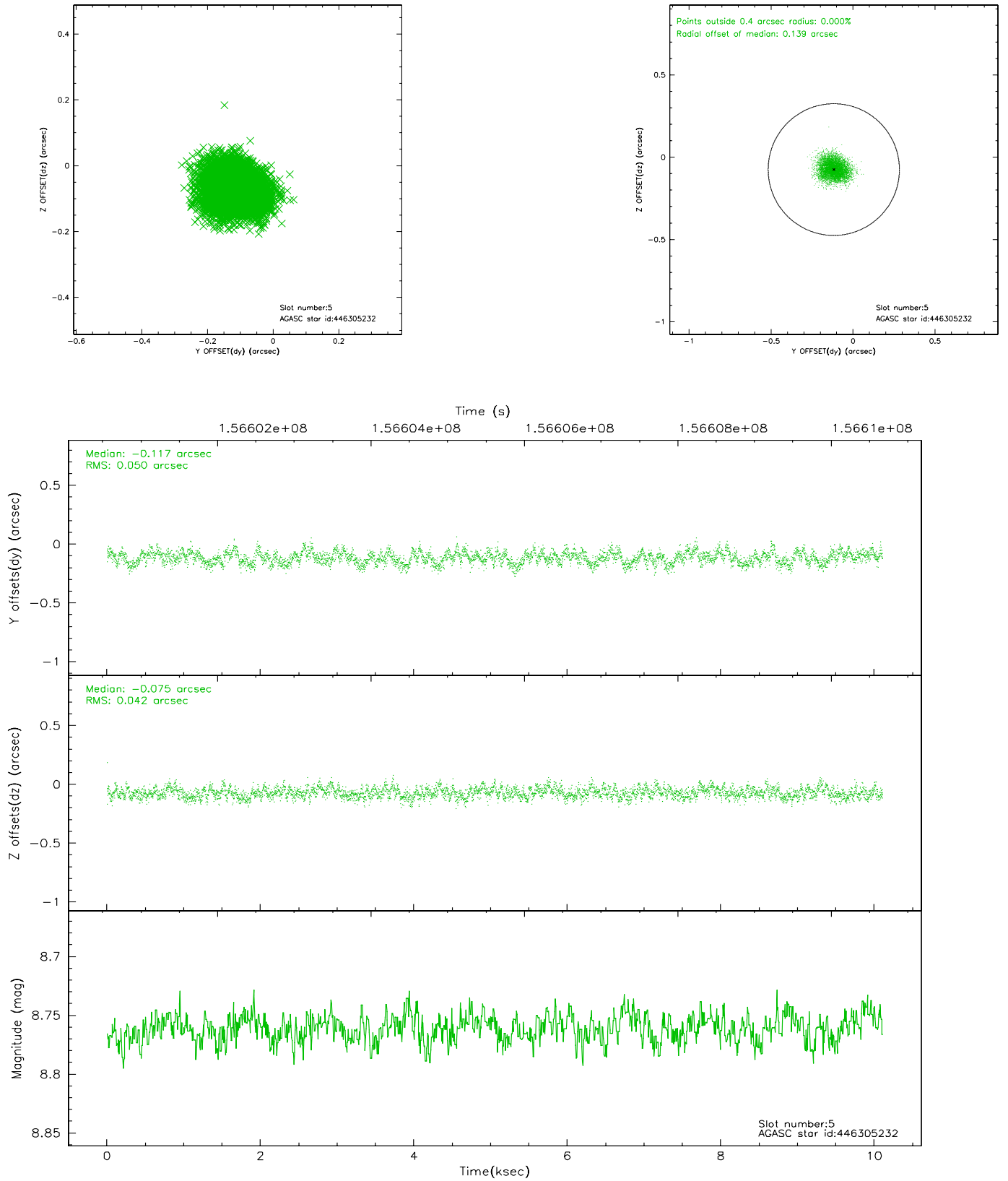
### 2.4.1 Slot 3



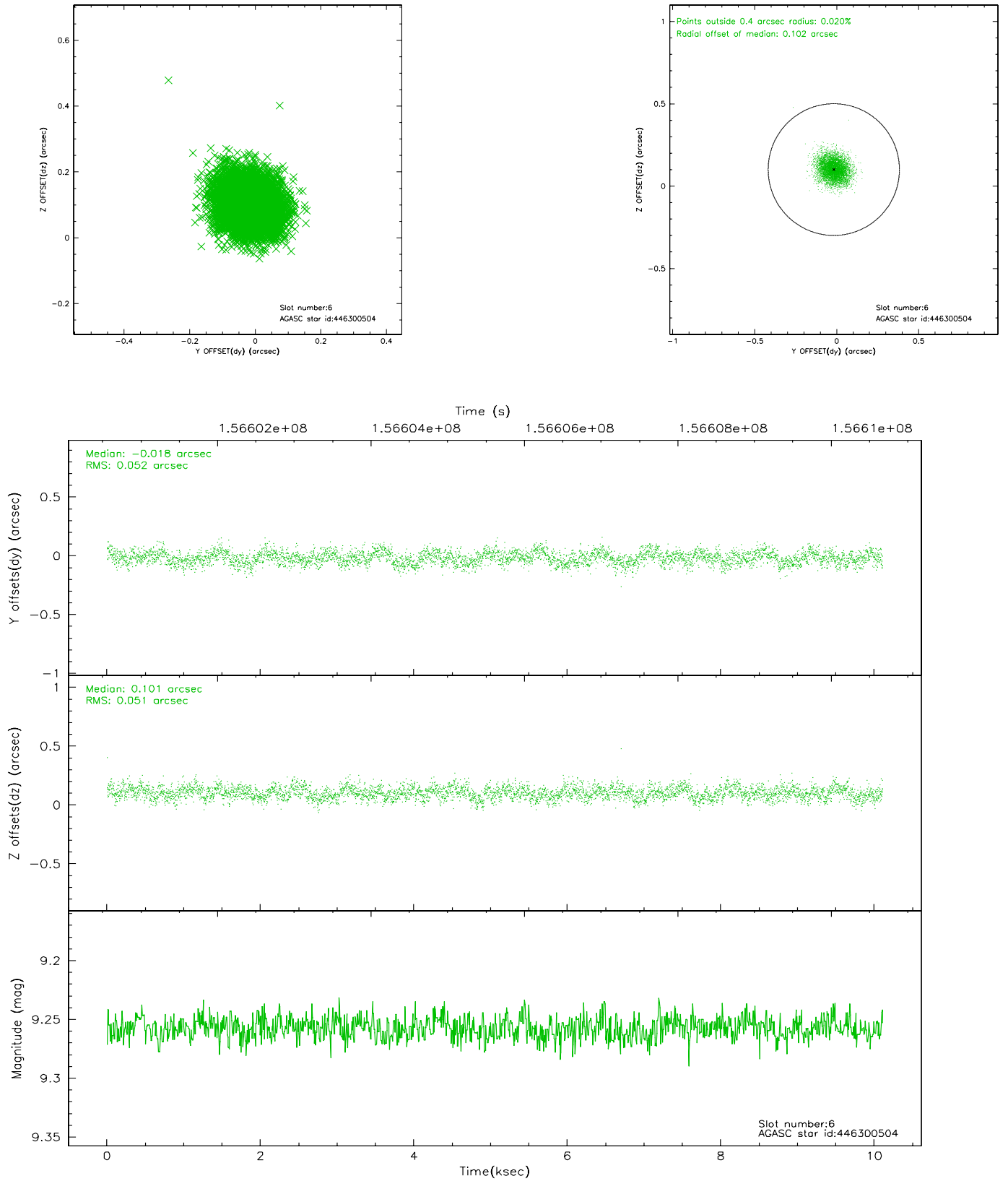
## 2.4.2 Slot 4



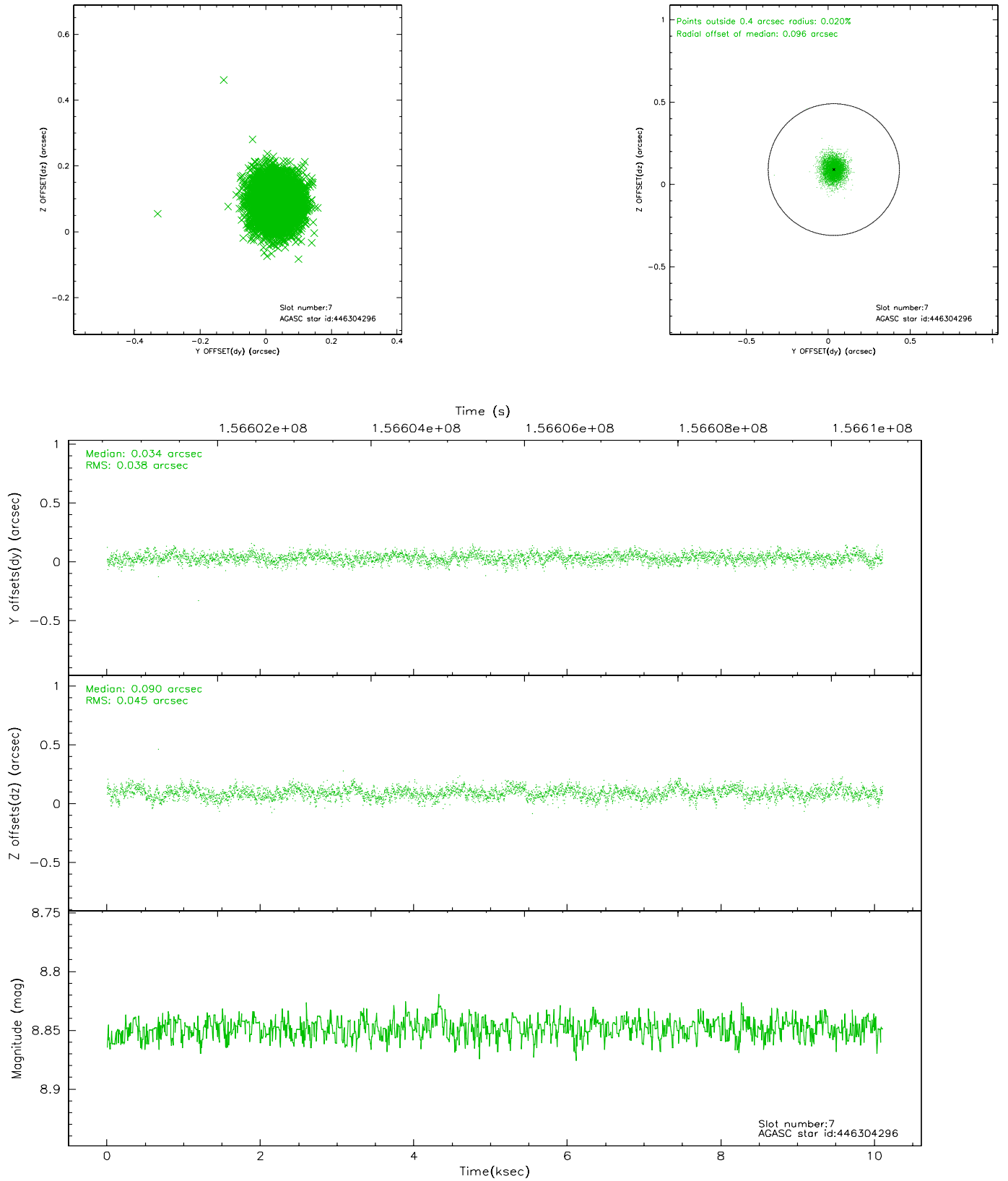
### 2.4.3 Slot 5



## 2.4.4 Slot 6

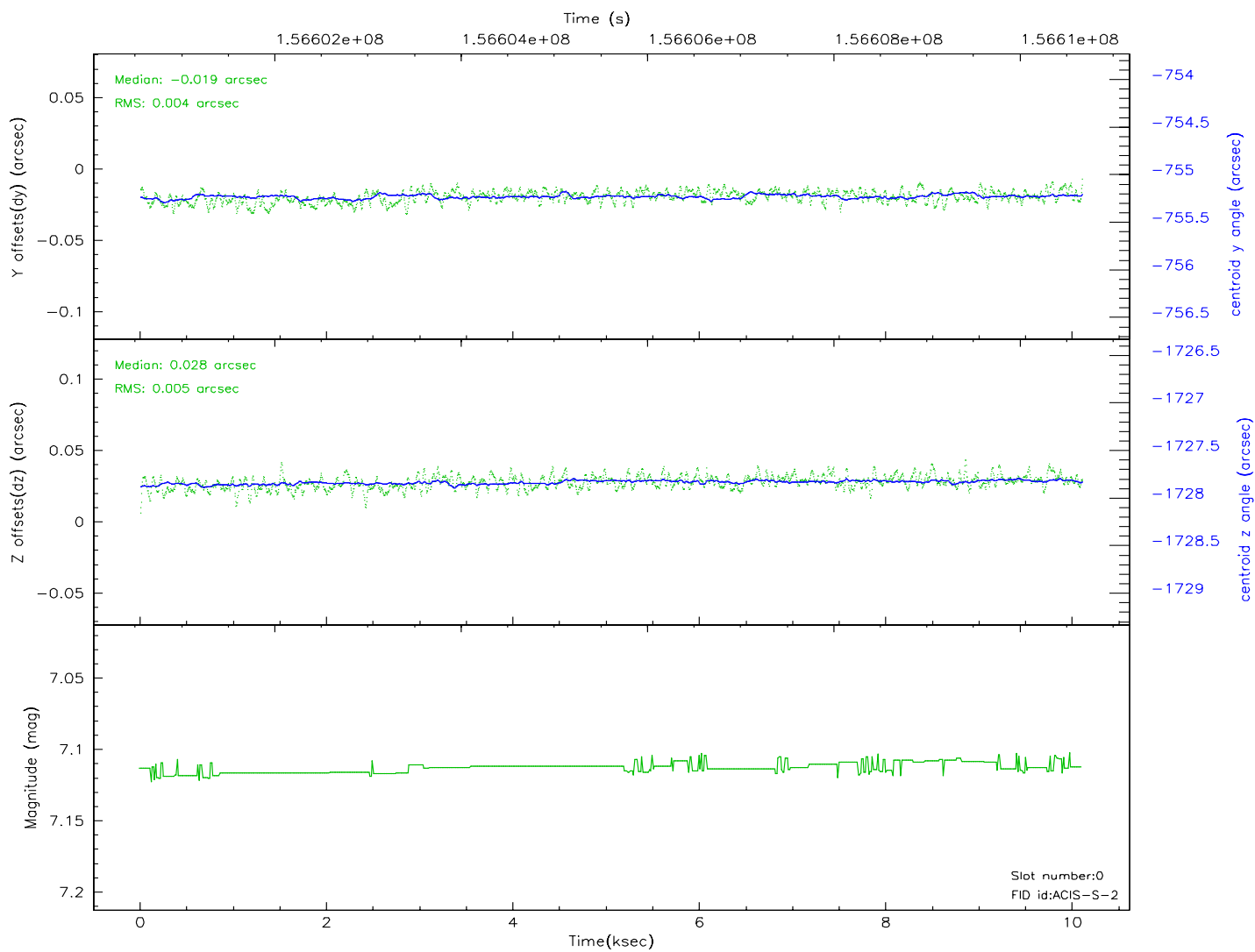
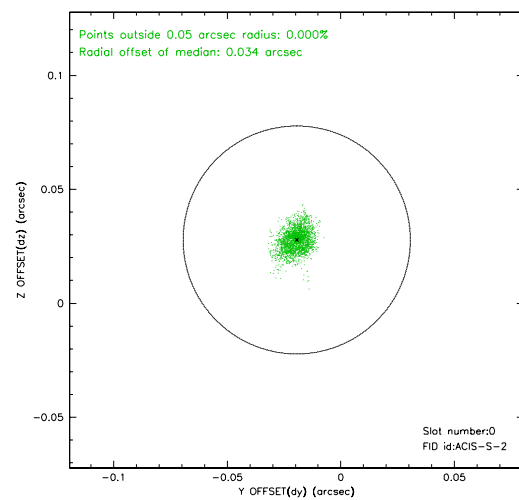
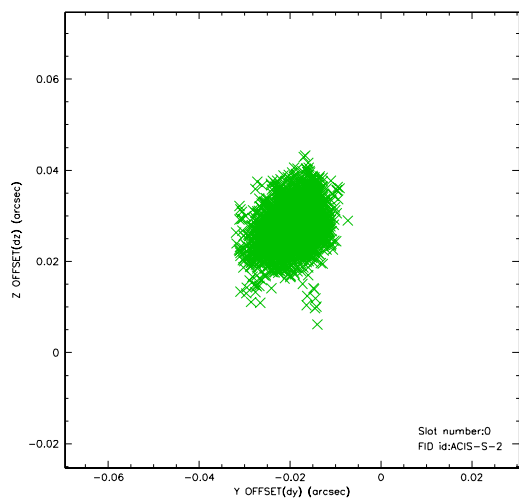


## 2.4.5 Slot 7

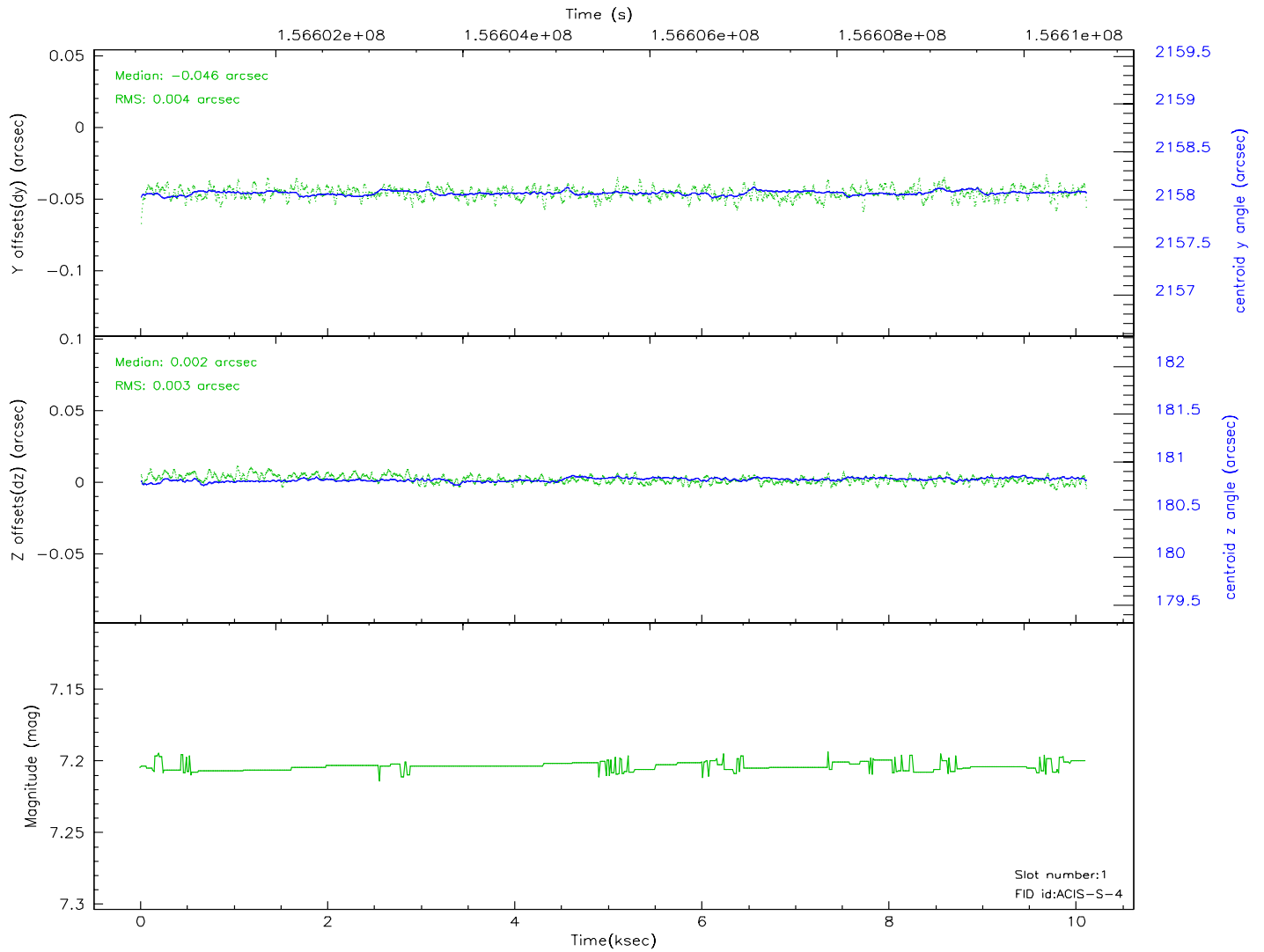
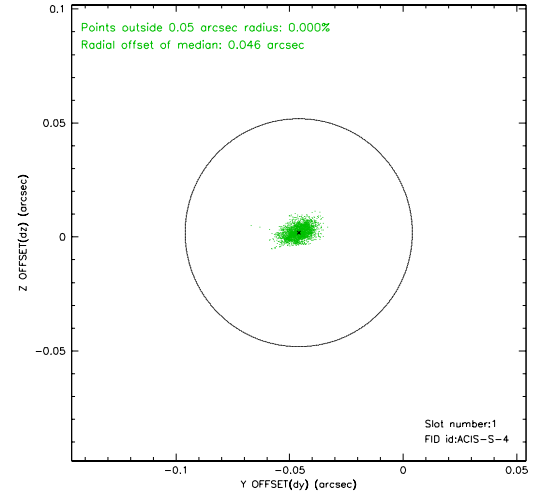
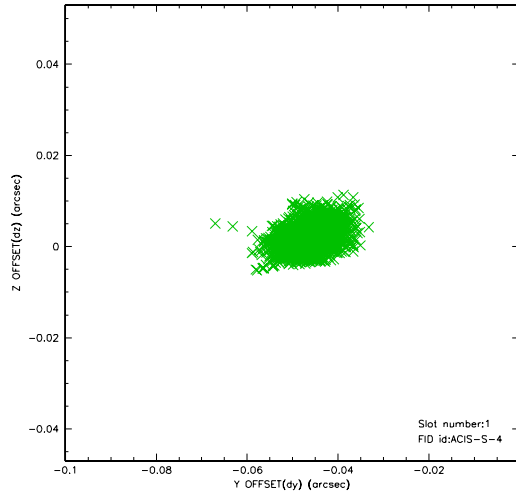


## 2.5 FID Slots

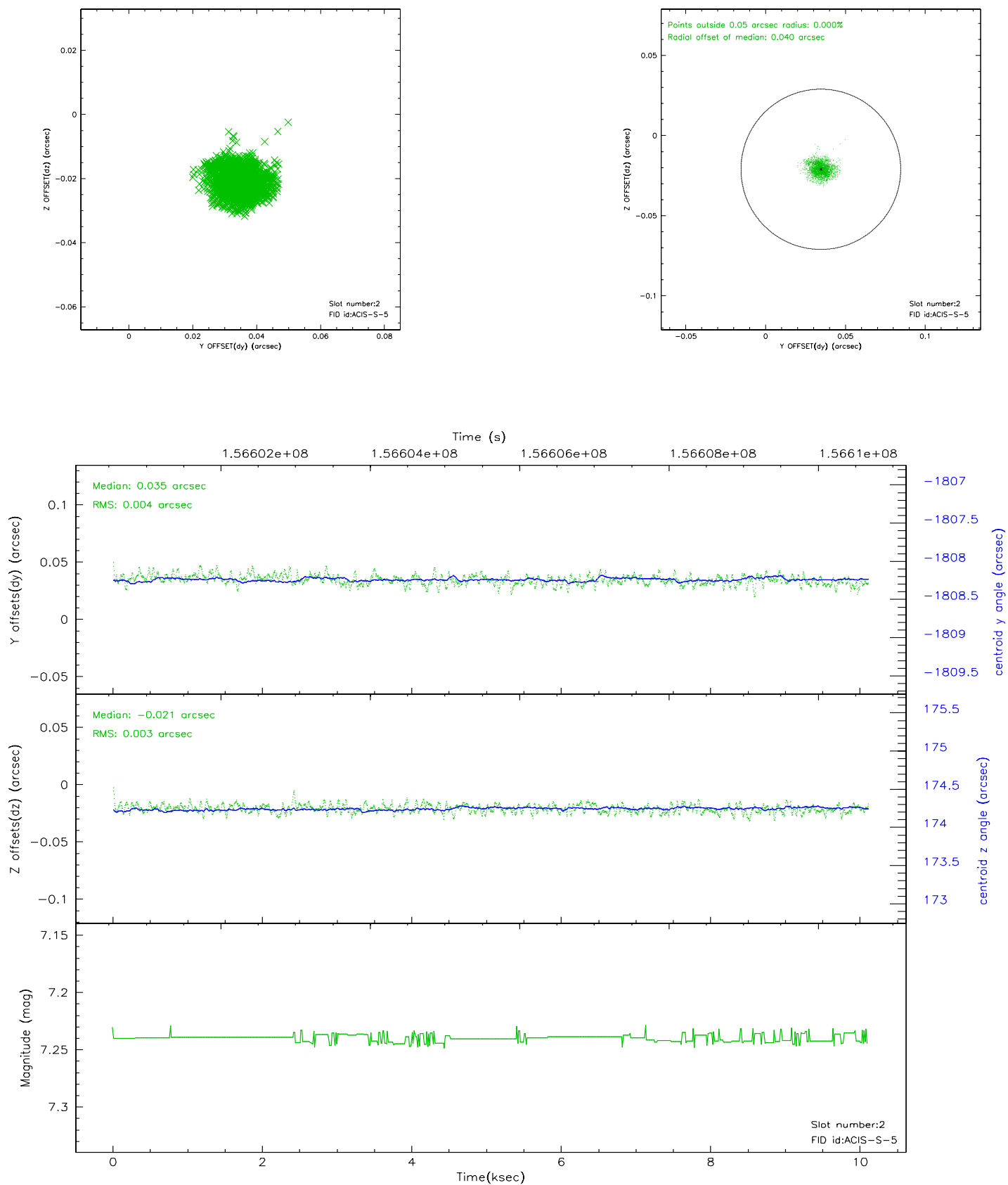
### 2.5.1 Slot 0



## 2.5.2 Slot 1



### 2.5.3 Slot 2





### 3 Point Sources

3.44 arcmin



## A Summary

### A.1 Status

V&V Scientist	Jen Lauer
V&V Date (YYYY-MM-DD)	2006.10.16
V&V Edition	1
V&V Disposition and Status	OK
V&V Charge Time	10.107

### A.2 Comments