

V&V Reference Report

L2 ASCDS Version : 7.6.8.1

Observation 4125 - L2 Version 001
Chandra X-Ray Center

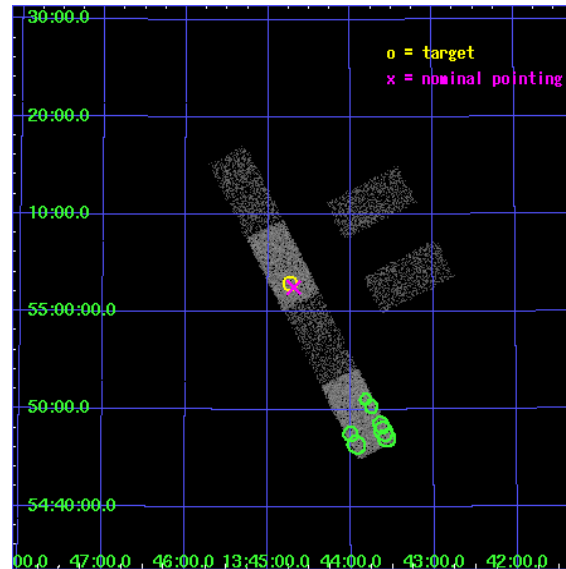
L2 Processing Date : Aug 10 2006

Contents

1	Front	2
2	OBI	3
2.1	OBI	3
2.1.1	Images	3
2.1.2	Bias	3
2.1.3	Parameters	4
2.1.4	Events	4
2.2	Compared Parameters	5
2.3	Aspect	6
2.4	Star Slots	9
2.4.1	Slot 3	9
2.4.2	Slot 4	10
2.4.3	Slot 5	11
2.4.4	Slot 6	12
2.4.5	Slot 7	13
2.5	FID Slots	14
2.5.1	Slot 0	14
2.5.2	Slot 1	15
2.5.3	Slot 2	16
3	Point Sources	17
A	Summary	18
A.1	Status	18
A.2	Comments	18

1 Front

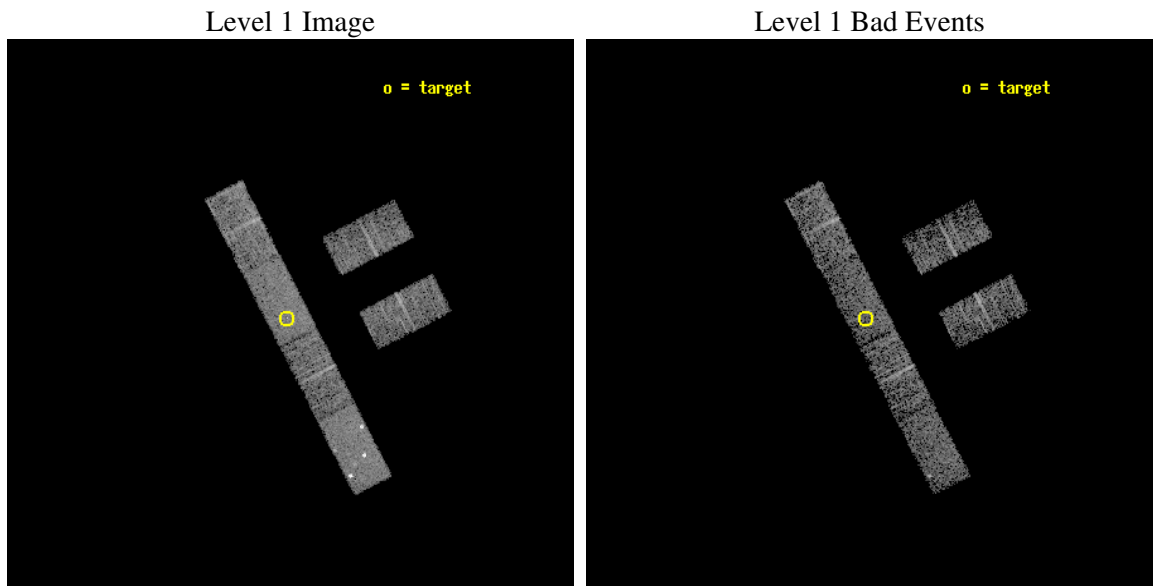
seq_num	700804
obs_id	4125
title	WHAT KIND OF JETS DOES NATURE MAKE? X-RAY CHARACTERIZATION OF THE FIRST FLAT SPECTRUM SAMPLE
observer	Dr. Giovanni Fossati
object	87GB 1342+5518
dtcycle	0
cycle	P
ra_targ	206.182083
dec_targ	55.050167
ra_nom	206.1718088685
dec_nom	55.042472190938
roll_nom	242.78161554645
revision	2
ontime	3904.2000258565
livetime	3817.1685821827
ontime2	3904.2000258565
ontime3	3904.2000258565
ontime5	3904.2000258565
ontime6	3904.2000258565
ontime7	3904.2000258565
ontime8	3904.2000258565
l2events	18516



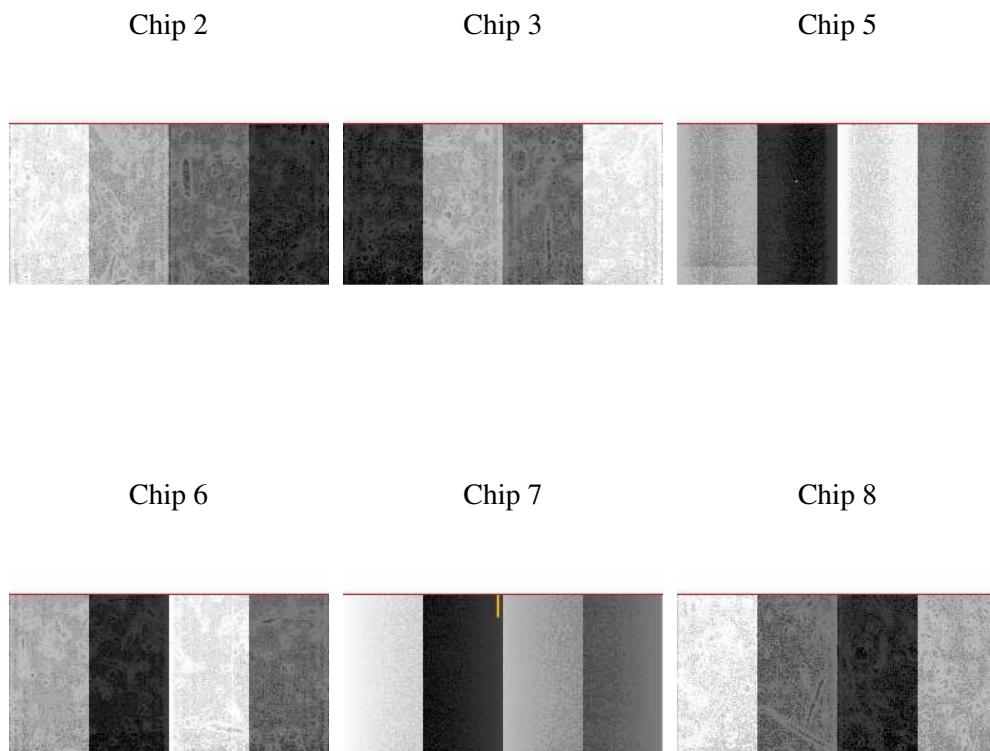
2 OBI

2.1 OBI

2.1.1 Images



2.1.2 Bias



2.1.3 Parameters

obi_num	0
ascdsver	7.6.8.1
caldsver	3.2.2
date	2006-08-10T05:09:05
revision	2

sched_exp_time	3500.000000
ontime	3906.6395362318
ontime2	3906.6395163536
ontime3	3906.6395163536
ontime5	3906.6395362318
ontime6	3906.6395163536
ontime7	3906.6395362318
ontime8	3906.6395163536
l1events	88689

2.1.4 Events

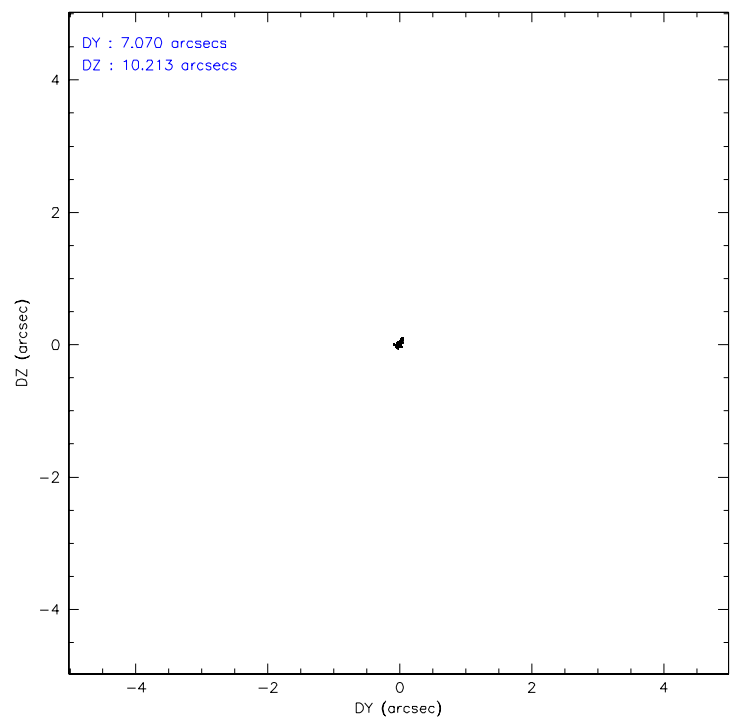
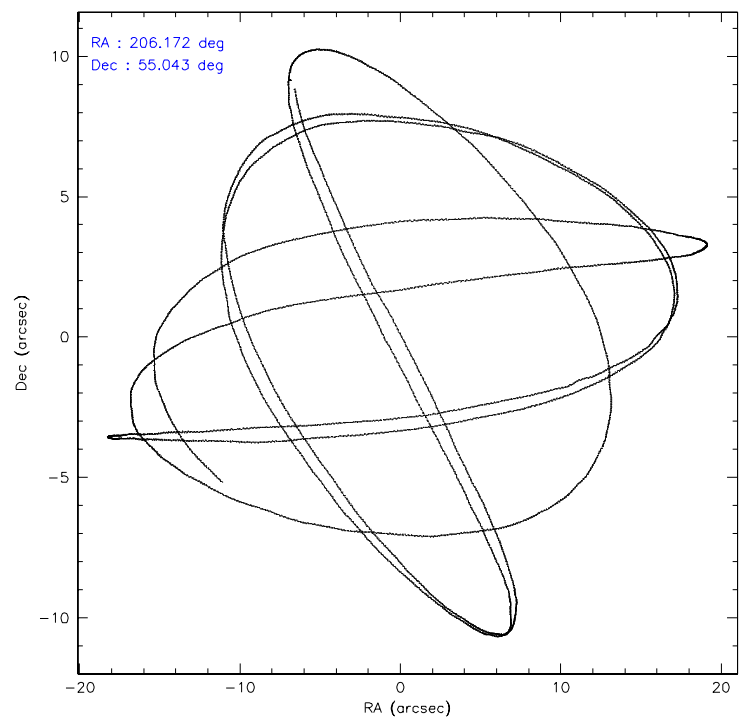
	ccd 2	ccd 3	ccd 5	ccd 6	ccd 7	ccd 8
level 1 events	12278	11733	20154	12292	16264	15968
rejected events	10818	10261	9541	10824	9781	12559
rejected %	88%	87%	47%	88%	60%	78%

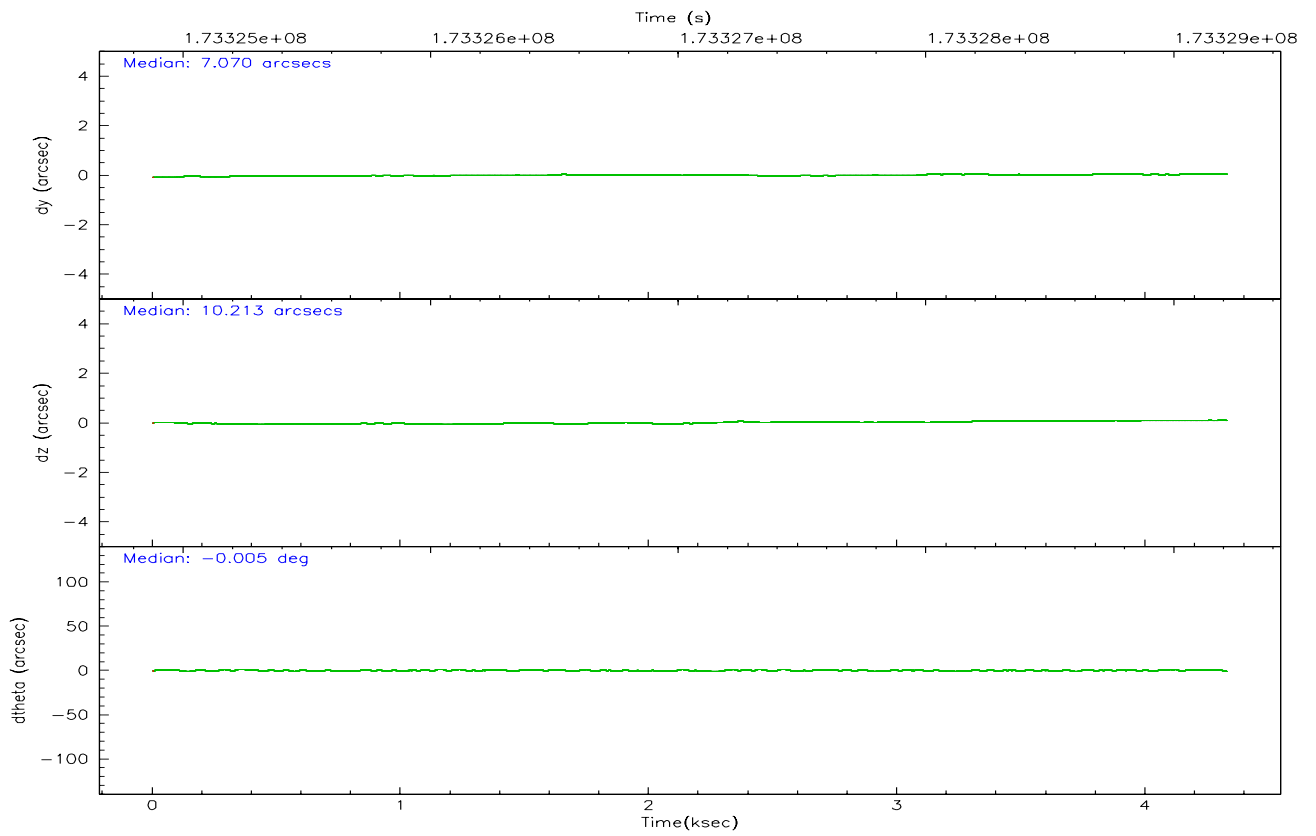
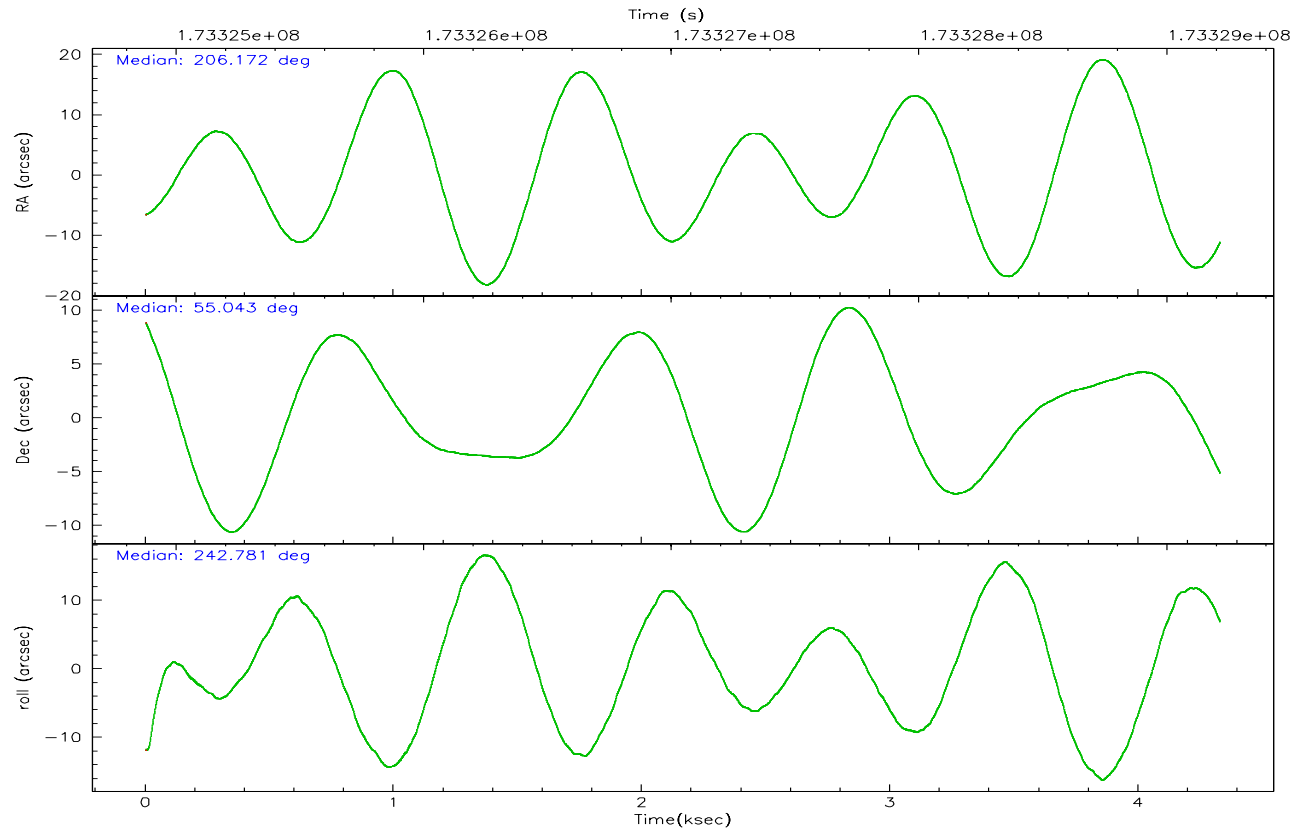
	ccd 2	ccd 3	ccd 5	ccd 6	ccd 7	ccd 8
grade 0 events	649	645	3445	523	460	1015
	5%	5%	17%	4%	2%	6%
grade 1 events	4	4	145	3	9	10
	0%	0%	0%	0%	0%	0%
grade 2 events	299	263	2624	279	1613	759
	2%	2%	13%	2%	9%	4%
grade 3 events	147	168	197	187	393	356
	1%	1%	0%	1%	2%	2%
grade 4 events	152	163	170	184	382	329
	1%	1%	0%	1%	2%	2%
grade 5 events	437	498	852	506	1106	720
	3%	4%	4%	4%	6%	4%
grade 6 events	215	236	4185	295	3645	951
	1%	2%	20%	2%	22%	5%
grade 7 events	10375	9756	8536	10315	8656	11828
	84%	83%	42%	83%	53%	74%

2.2 Compared Parameters

Parameter	Planned	Actual	Parameter	Planned	Actual
Instrument	ACIS	ACIS	Obspar format version number	6	6
Detector	ACIS-235678	ACIS-235678	Obspar file type	PREDICTED	ACTUAL
Grating	NONE	NONE	Obspar update status	NONE	UPDATED
Data mode	FAINT	FAINT	On-chip summing requested	N	N
Observation mode	POINTING	POINTING	Subarray requested	1/2	1/2
Pointing RA	206.168909	206.1718088684973	Subarray start row	0	257
Pointing Dec	55.069658	55.04247219093813	Subarray row count	1024	512
Pointing Roll	242.627389	242.7816155464531	Alternating exposures requested	N	N
SIM focus pos (mm)	-0.684267	-0.6828225247311905	Primary exposure time	0.000000	1.8
SIM defocus (mm)	0	0.001444936568705701			
SIM translation stage pos (mm)	-190.132523	-190.1400660498719			
SIM translation stage offset (mm)	0	0.00754346686406393			
Observation start time	173325713.184000	173324430.43596			
Observation start date	2003-06-30T02:00:49	2003-06-30T01:40:30			
Observation end time	173329213.184000	173330056.14869			
Observation end date	2003-06-30T02:59:09	2003-06-30T03:14:16			
Read mode	TIMED	TIMED			

2.3 Aspect



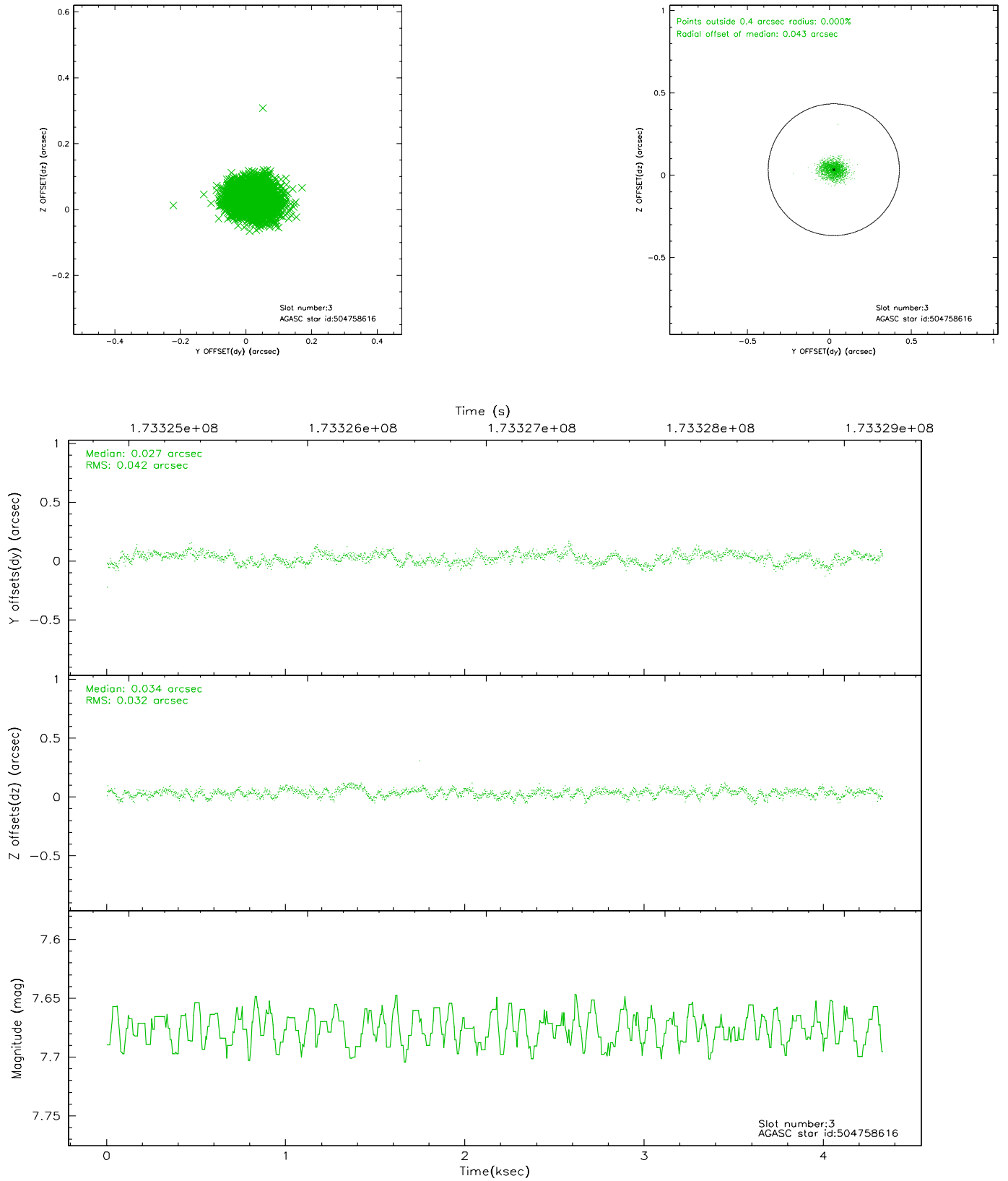


Slot Statistics

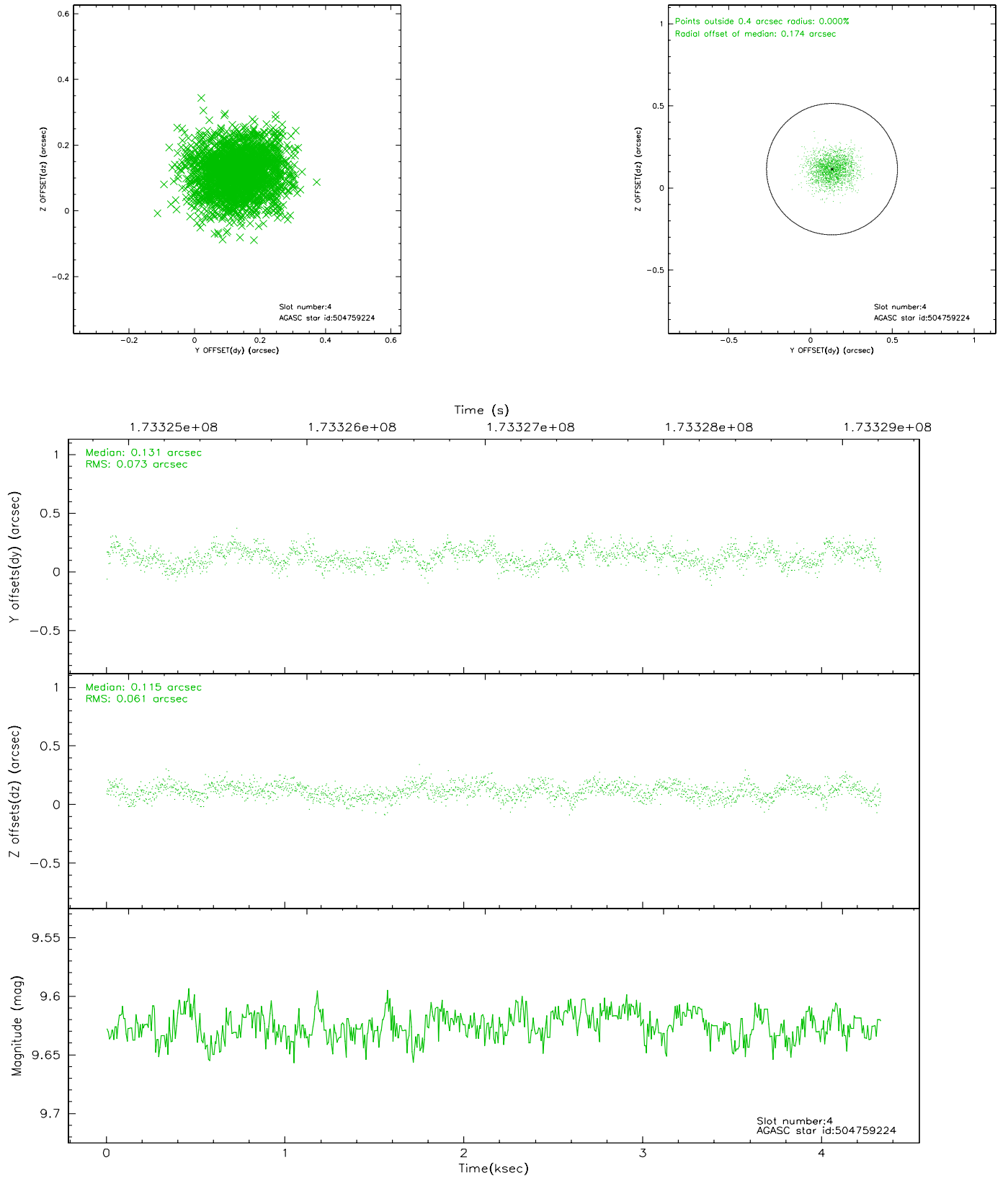
slot	status	id	mag	n_pts	med_dy	med_dz	dr1	dr2	ra	dec	mean_y	mean_z
0	FID	ACIS-S-2	7.10	1056	-0.034	0.020	0.006	0.010	0.000000	0.000000	-759.82	-1731.47
1	FID	ACIS-S-4	7.20	1056	0.011	0.011	0.004	0.008	0.000000	0.000000	2152.82	175.58
2	FID	ACIS-S-5	7.23	1056	-0.008	-0.022	0.006	0.010	0.000000	0.000000	-1810.83	170.77
3	GUIDE	504758616	7.68	2110	0.027	0.034	0.057	0.090	206.022332	54.501599	1956.59	668.10
4	GUIDE	504759224	9.63	2111	0.131	0.115	0.102	0.165	206.509960	54.382342	1868.03	1772.42
5	GUIDE	504770328	6.17	2112	0.025	-0.014	0.066	0.104	206.648581	54.432687	1572.37	1945.68
6	GUIDE	505160968	9.59	2110	-0.038	-0.126	0.102	0.165	206.688279	55.414175	-1592.23	371.33
7	GUIDE	505163040	6.94	2111	-0.150	-0.013	0.054	0.083	206.025637	55.634983	-1674.67	-1194.18

2.4 Star Slots

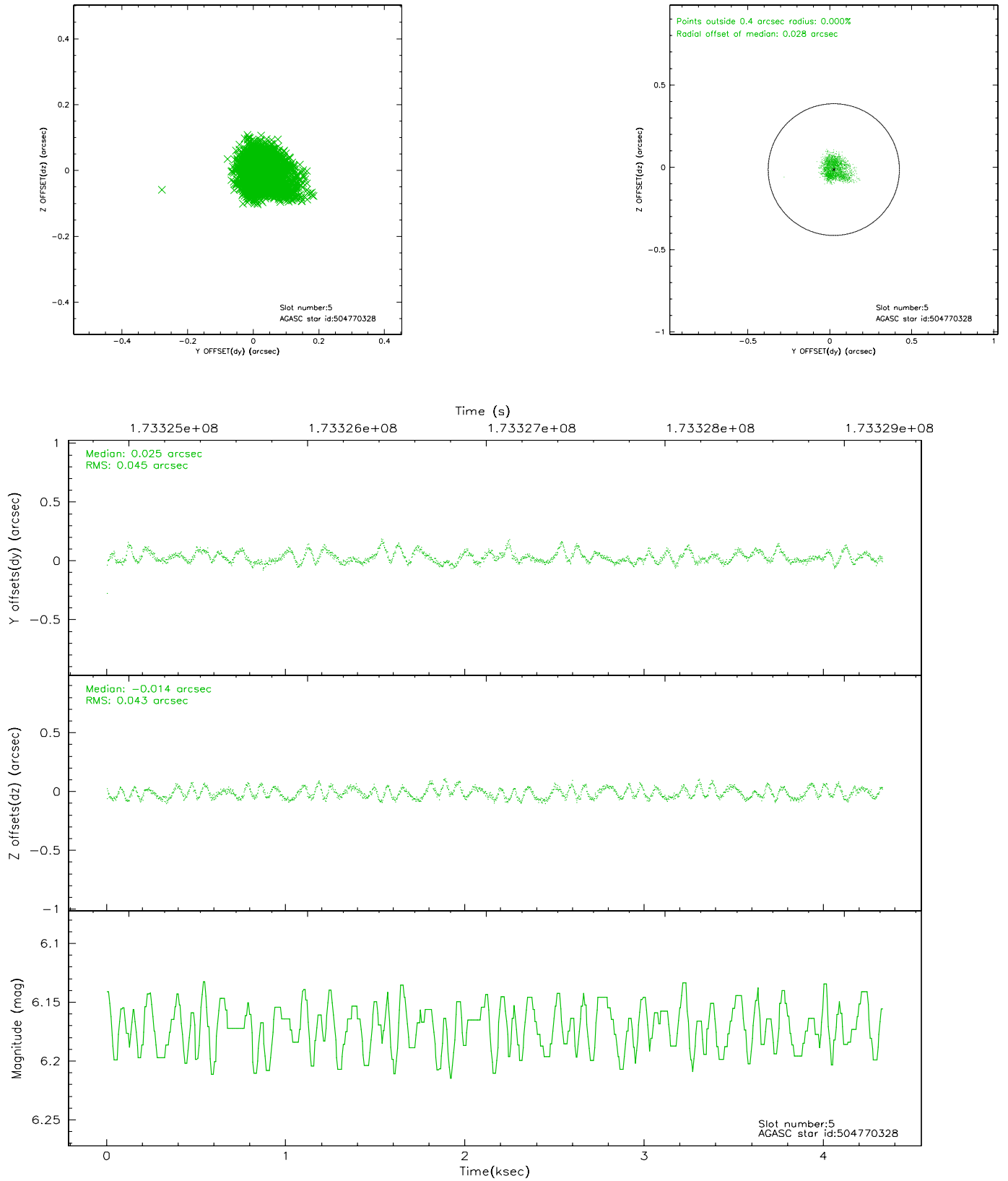
2.4.1 Slot 3



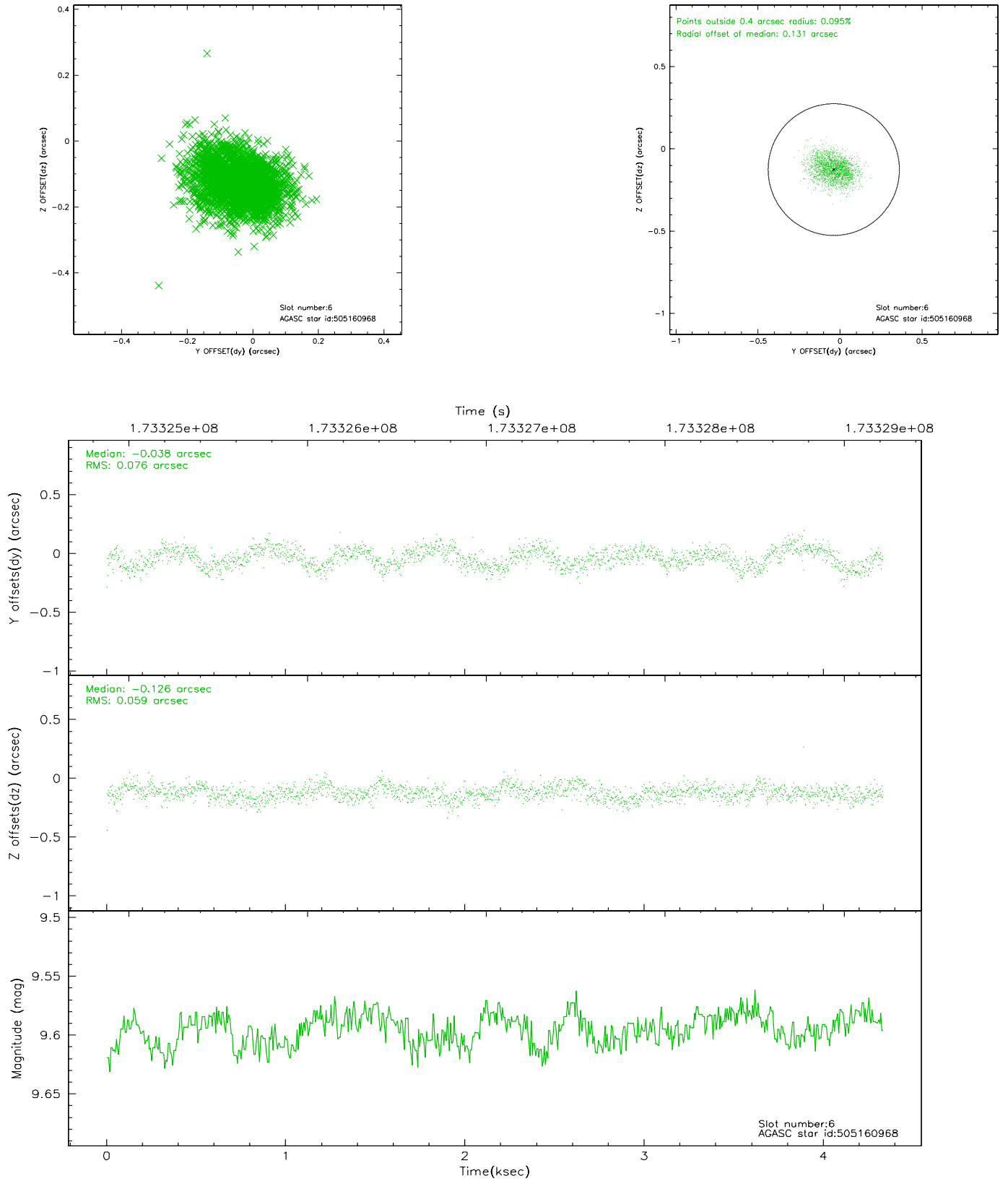
2.4.2 Slot 4



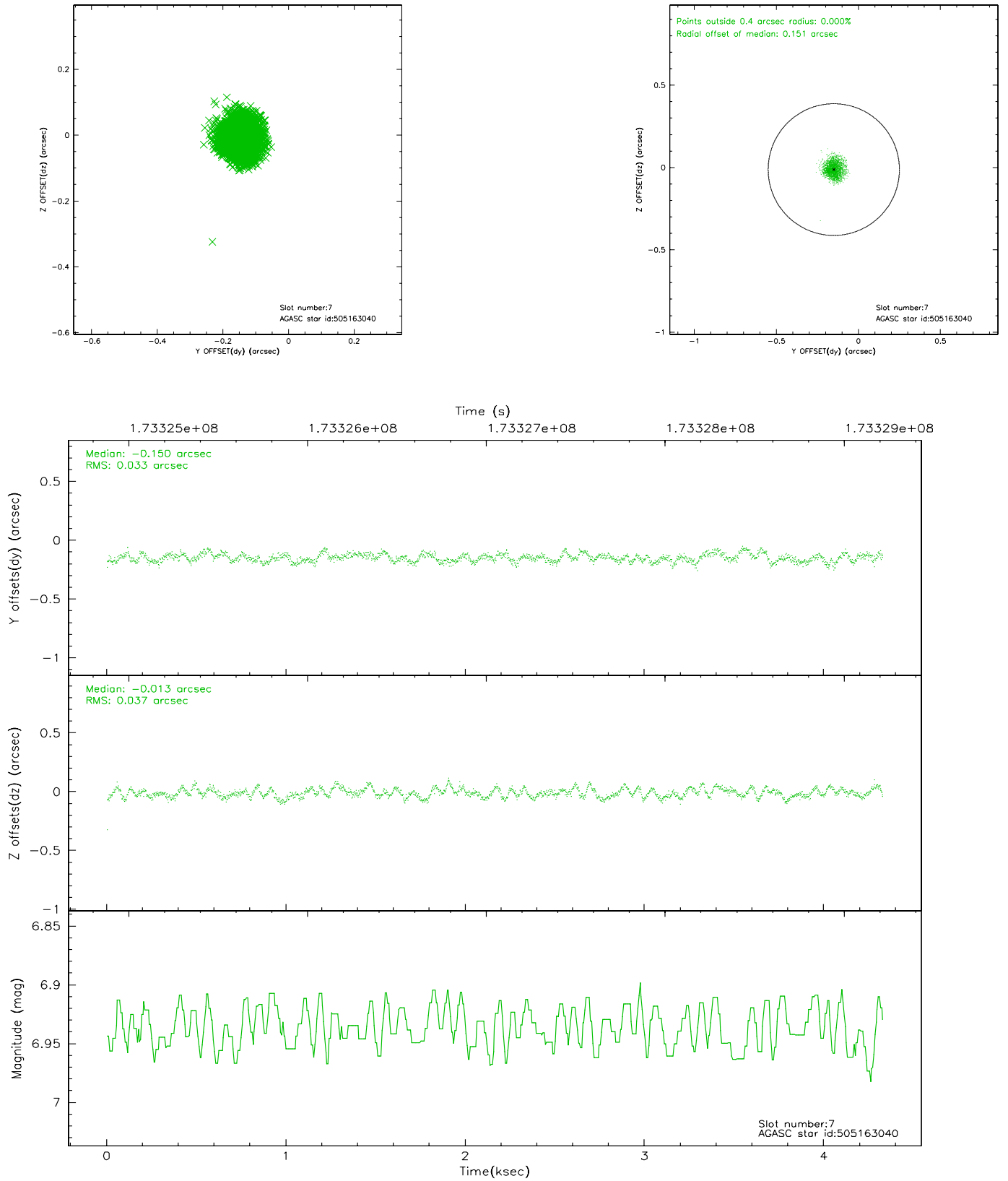
2.4.3 Slot 5



2.4.4 Slot 6

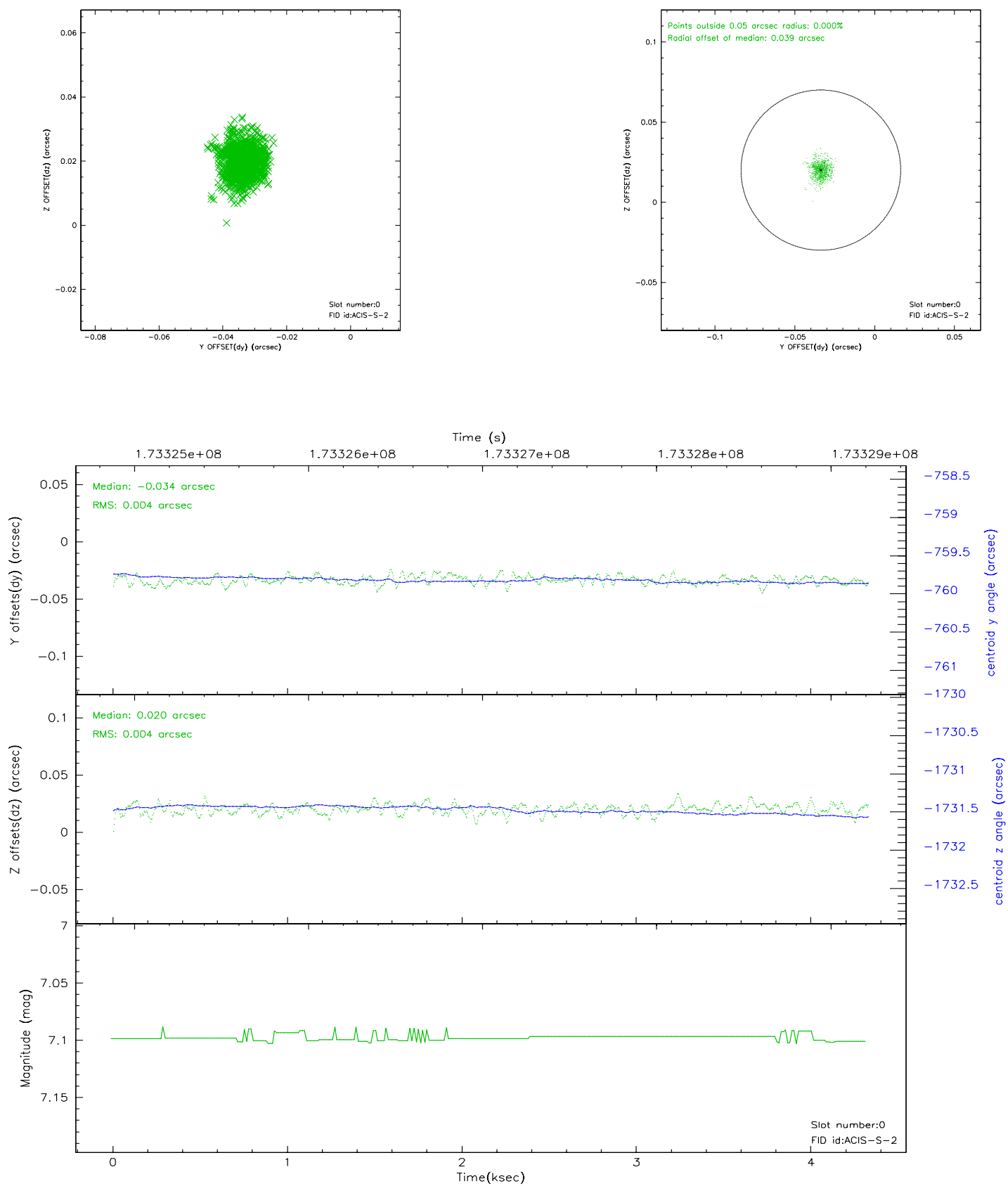


2.4.5 Slot 7

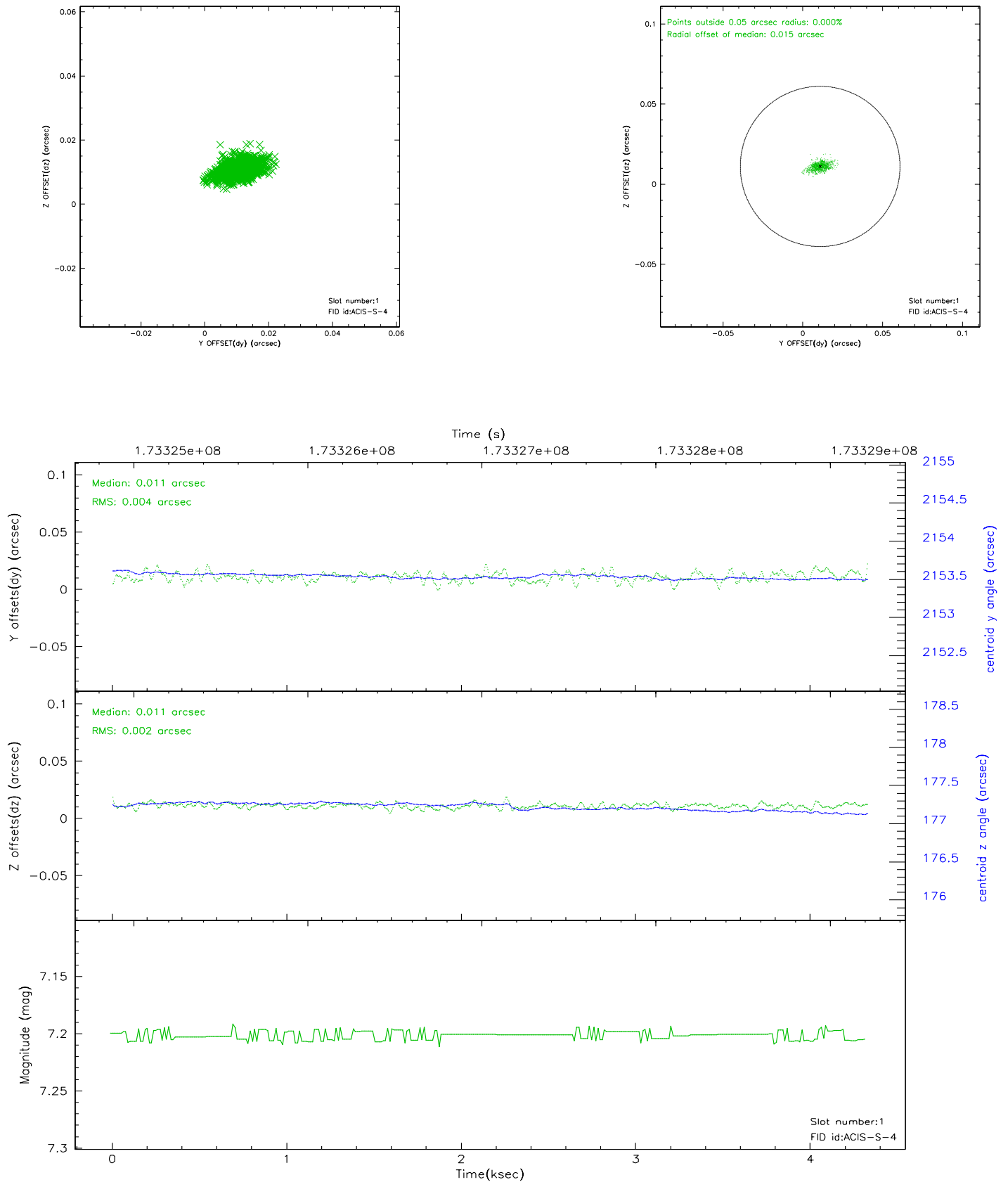


2.5 FID Slots

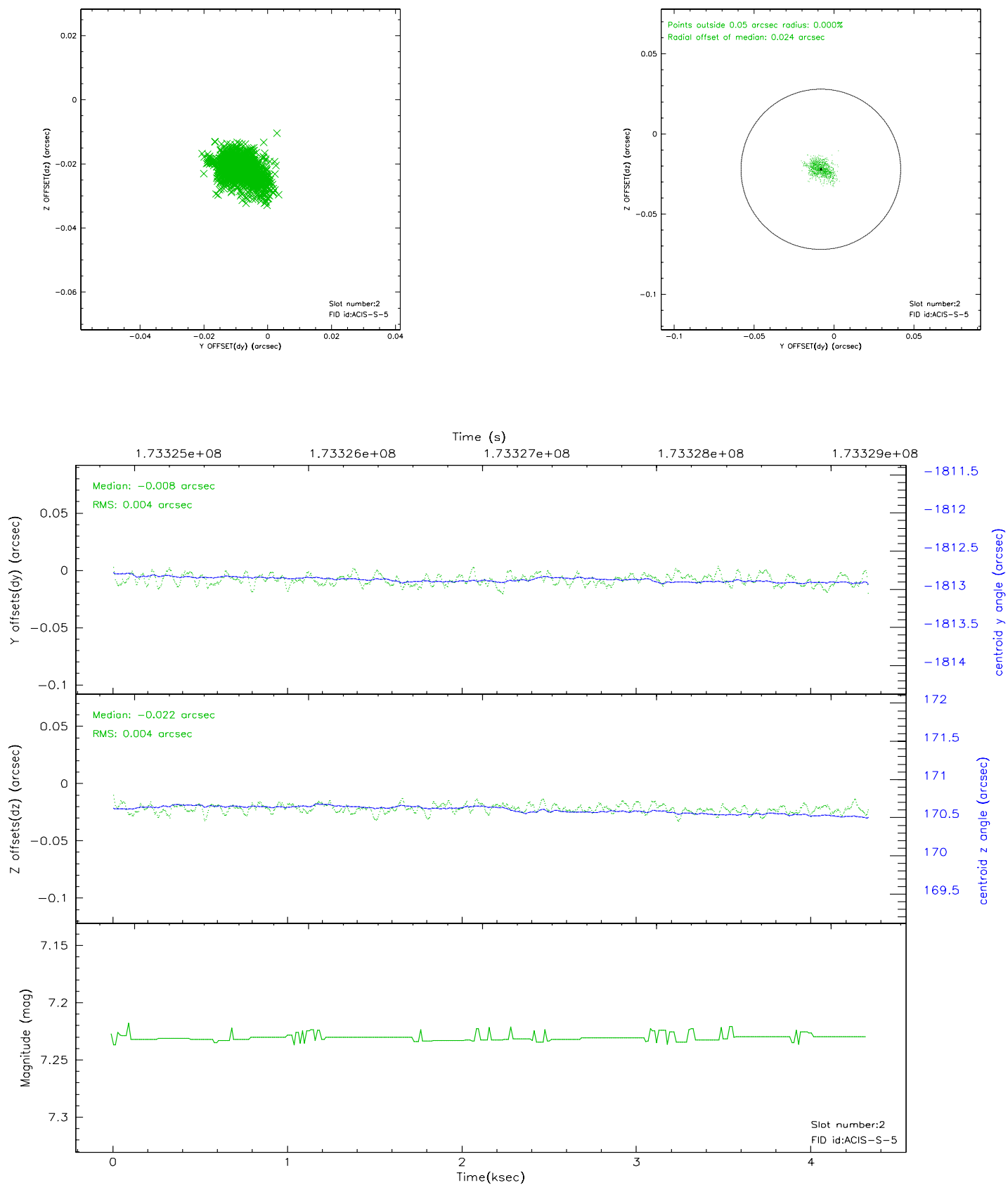
2.5.1 Slot 0



2.5.2 Slot 1



2.5.3 Slot 2



3 Point Sources

18.28 arcmin



A Summary

A.1 Status

V&V Scientist	Jen Lauer
V&V Date (YYYY-MM-DD)	2006.08.10
V&V Edition	1
V&V Disposition and Status	OK
V&V Charge Time	3.906

A.2 Comments