

V&V Reference Report

L2 ASCDS Version : 7.6.8

Observation 4122 - L2 Version 001
Chandra X-Ray Center

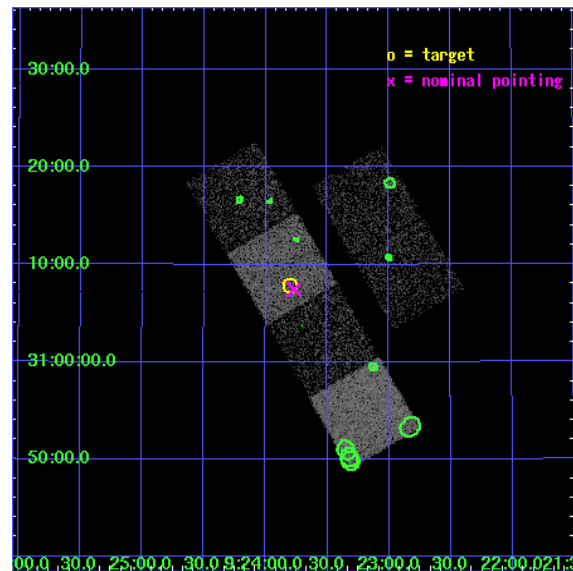
L2 Processing Date : Jul 25 2006

Contents

1	Front	2
2	OBI	3
2.1	OBI	3
2.1.1	Images	3
2.1.2	Bias	3
2.1.3	Parameters	4
2.1.4	Events	4
2.2	Compared Parameters	5
2.3	Aspect	6
2.4	Star Slots	9
2.4.1	Slot 3	9
2.4.2	Slot 4	10
2.4.3	Slot 5	11
2.4.4	Slot 6	12
2.4.5	Slot 7	13
2.5	FID Slots	14
2.5.1	Slot 0	14
2.5.2	Slot 1	15
2.5.3	Slot 2	16
3	Point Sources	17
A	Summary	18
A.1	Status	18
A.2	Comments	18

1 Front

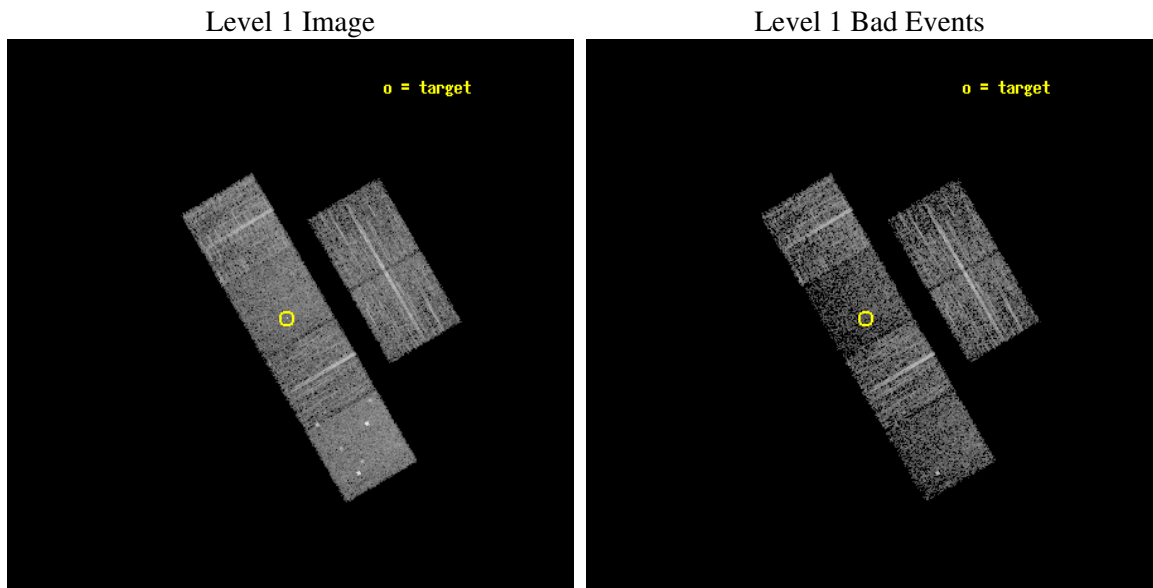
seq_num	700801
obs_id	4122
title	WHAT KIND OF JETS DOES NATURE MAKE? X-RAY CHARACTERIZATION OF THE FIRST FLAT SPECTRUM SAMPLE
observer	Dr. Giovanni Fossati
object	B2 0920+31B
dtcycle	0
cycle	P
ra_targ	140.95
dec_targ	31.131639
ra_nom	140.94261869492
dec_nom	31.124221498981
roll_nom	239.82886230211
revision	2
ontime	5151.9999808073
livetime	5086.7622548884
ontime2	5148.7590105534
ontime3	5151.9999808073
ontime5	5151.9999808073
ontime6	5151.9999808073
ontime7	5151.9999808073
ontime8	5151.9999808073
l2events	34409



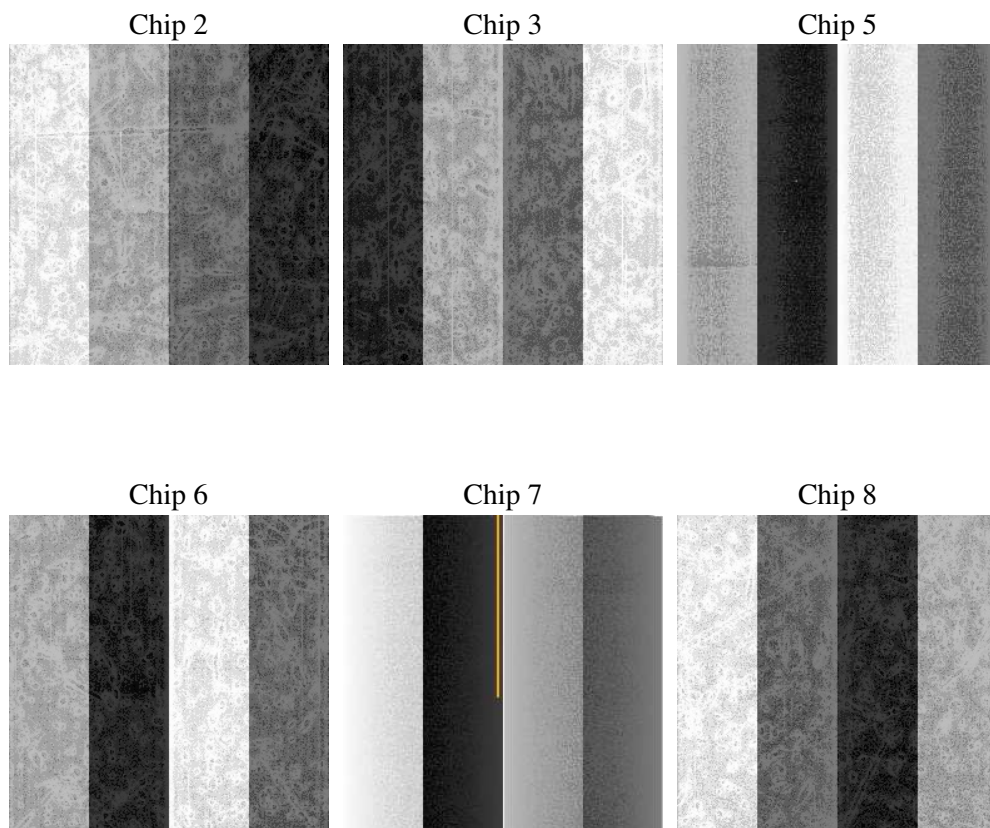
2 OBI

2.1 OBI

2.1.1 Images



2.1.2 Bias



2.1.3 Parameters

obi_num	0
ascdsver	7.6.8
caldsver	3.2.2
date	2006-07-25T22:11:43
revision	2

sched_exp_time	5000.000000
ontime	5205.047239542
ontime2	5201.8062493801
ontime3	5205.0472196341
ontime5	5205.0472196341
ontime6	5205.0472196341
ontime7	5205.047239542
ontime8	5205.0472196341
l1events	171143

2.1.4 Events

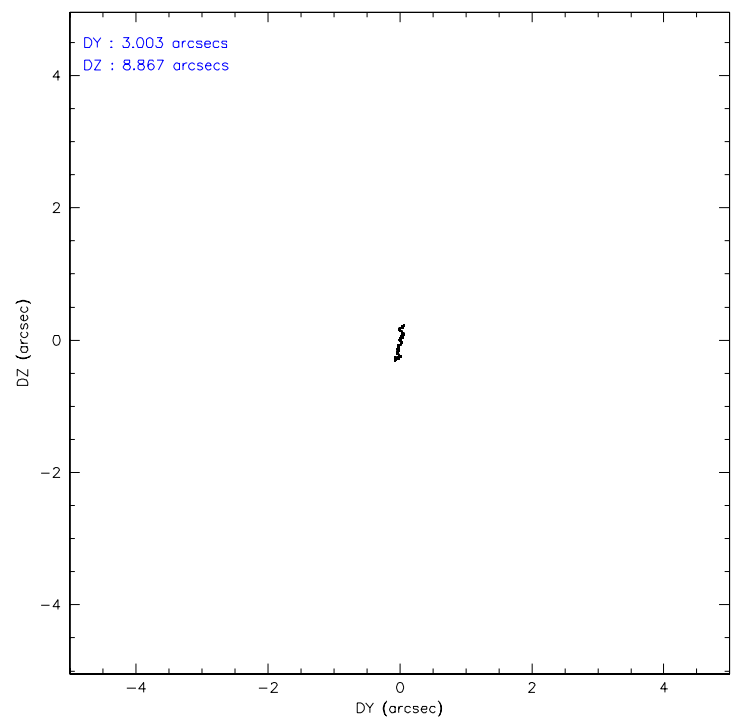
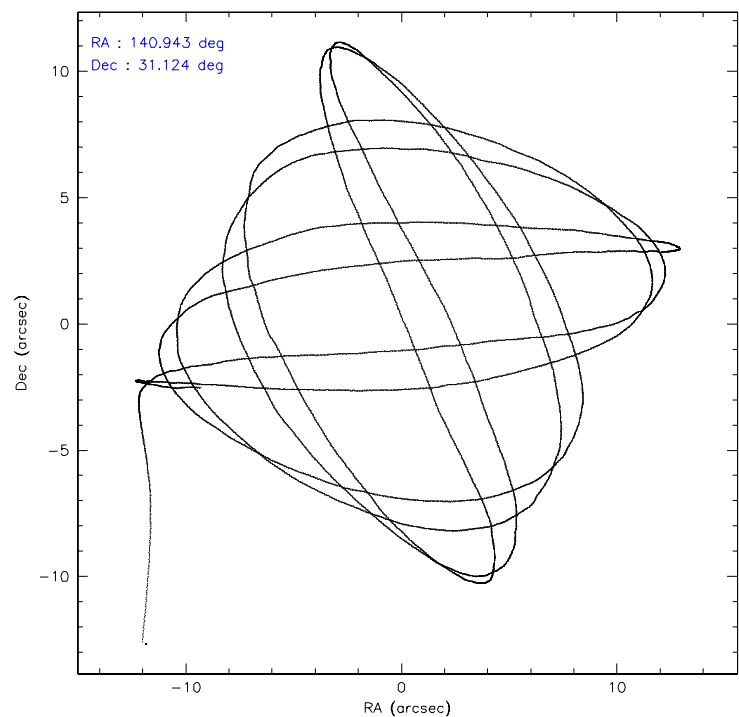
	ccd 2	ccd 3	ccd 5	ccd 6	ccd 7	ccd 8
level 1 events	28578	25167	32710	27488	24577	32623
rejected events	26044	22863	15690	24833	13333	25772
rejected %	91%	90%	47%	90%	54%	78%

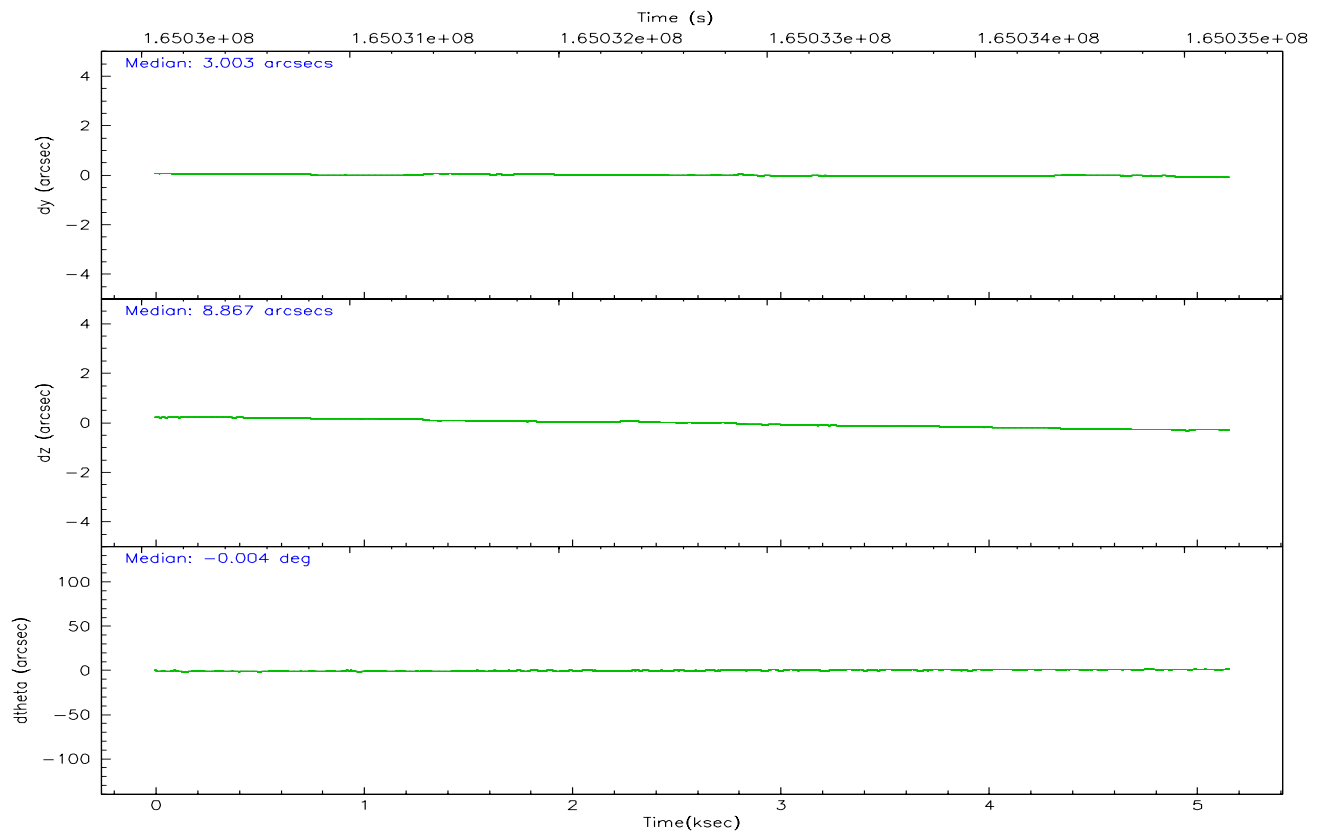
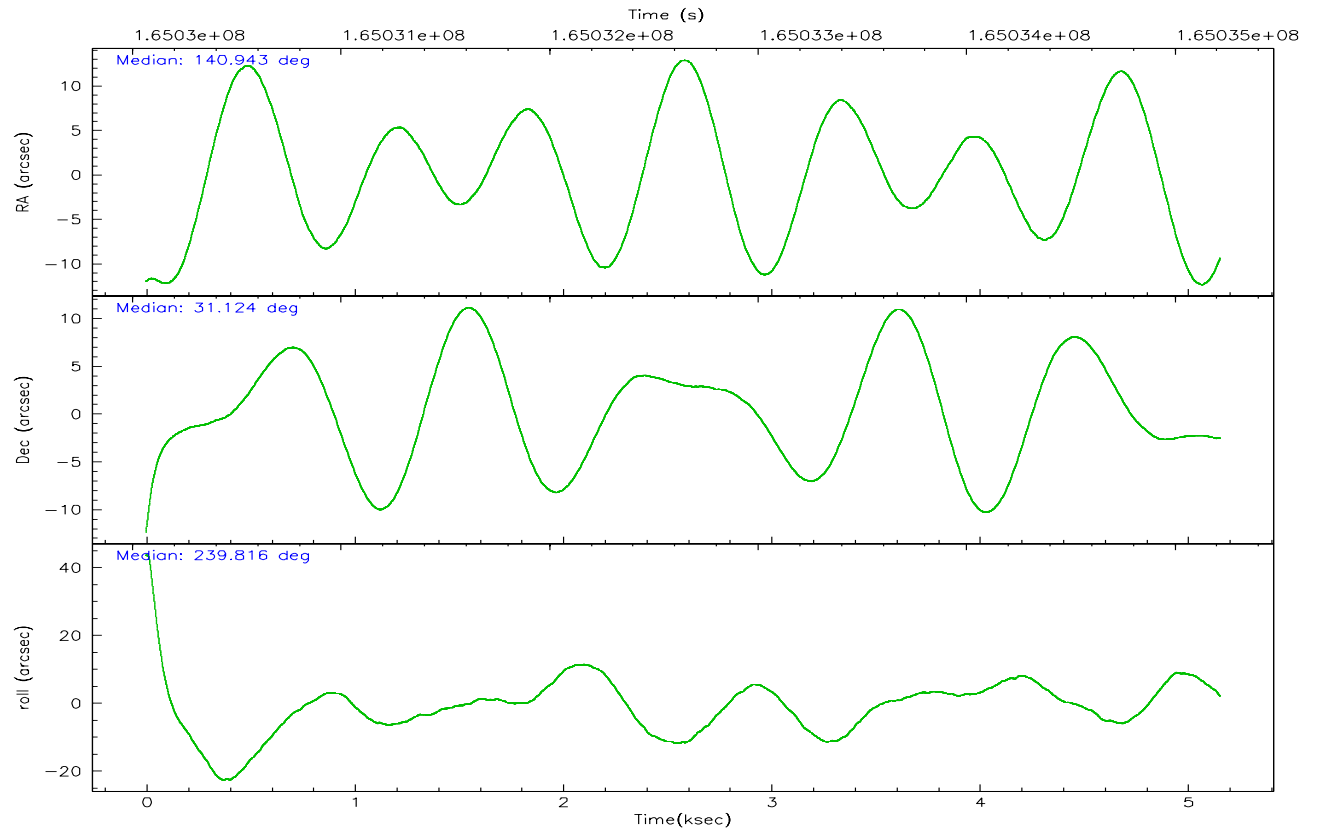
	ccd 2	ccd 3	ccd 5	ccd 6	ccd 7	ccd 8
grade 0 events	956	880	2038	1002	863	1958
	3%	3%	6%	3%	3%	6%
grade 1 events	15	16	30	15	8	15
	0%	0%	0%	0%	0%	0%
grade 2 events	608	483	5531	567	2847	1580
	2%	1%	16%	2%	11%	4%
grade 3 events	275	261	457	305	767	772
	0%	1%	1%	1%	3%	2%
grade 4 events	284	265	431	300	714	677
	0%	1%	1%	1%	2%	2%
grade 5 events	753	811	1739	886	1992	1255
	2%	3%	5%	3%	8%	3%
grade 6 events	441	441	8741	518	6189	1956
	1%	1%	26%	1%	25%	5%
grade 7 events	25246	22010	13743	23895	11197	24410
	88%	87%	42%	86%	45%	74%

2.2 Compared Parameters

Parameter	Planned	Actual	Parameter	Planned	Actual
Instrument	ACIS	ACIS	Obspar format version number	6	6
Detector	ACIS-235678	ACIS-235678	Obspar file type	PREDICTED	ACTUAL
Grating	NONE	NONE	Obspar update status	NONE	UPDATED
Data mode	VFAINT	VFAINT	On-chip summing requested	N	N
Observation mode	POINTING	POINTING	Subarray requested	NONE	NONE
Pointing RA	140.942363	140.9426186949199	Alternating exposures requested	N	N
Pointing Dec	31.151486	31.12422149898109	Primary exposure time	0.000000	3.2
Pointing Roll	239.672227	239.8288623021085			
SIM focus pos (mm)	-0.684267	-0.6828225247311905			
SIM defocus (mm)	0	0.001444936568705701			
SIM translation stage pos (mm)	-190.132523	-190.1425803651734			
SIM translation stage offset (mm)	0	0.01005778216563158			
Observation start time	165030216.184000	165029134.29721			
Observation start date	2003-03-26T01:42:32	2003-03-26T01:25:34			
Observation end time	165035216.184000	165035585.64748			
Observation end date	2003-03-26T03:05:52	2003-03-26T03:13:05			
Read mode	TIMED	TIMED			

2.3 Aspect



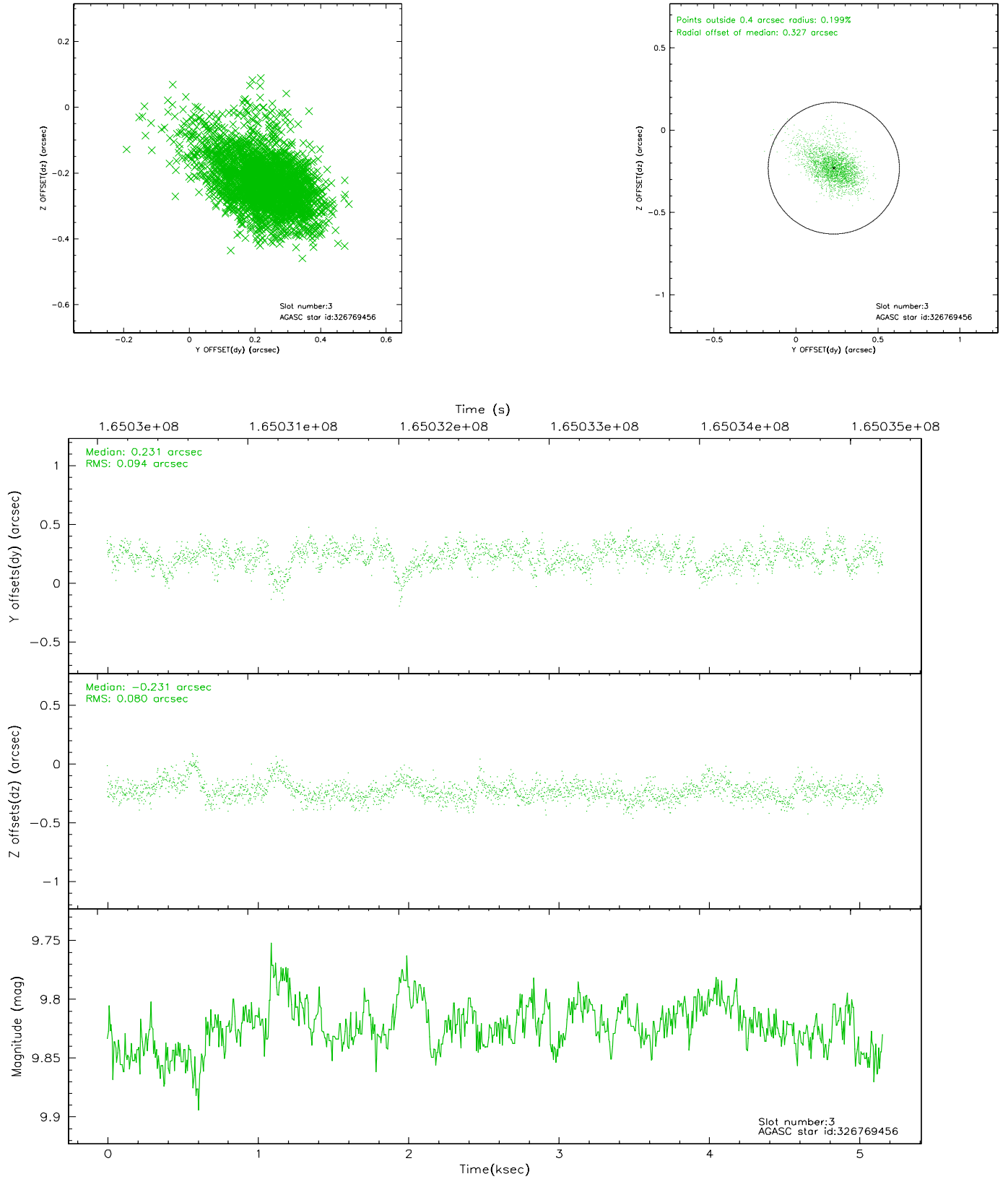


Slot Statistics

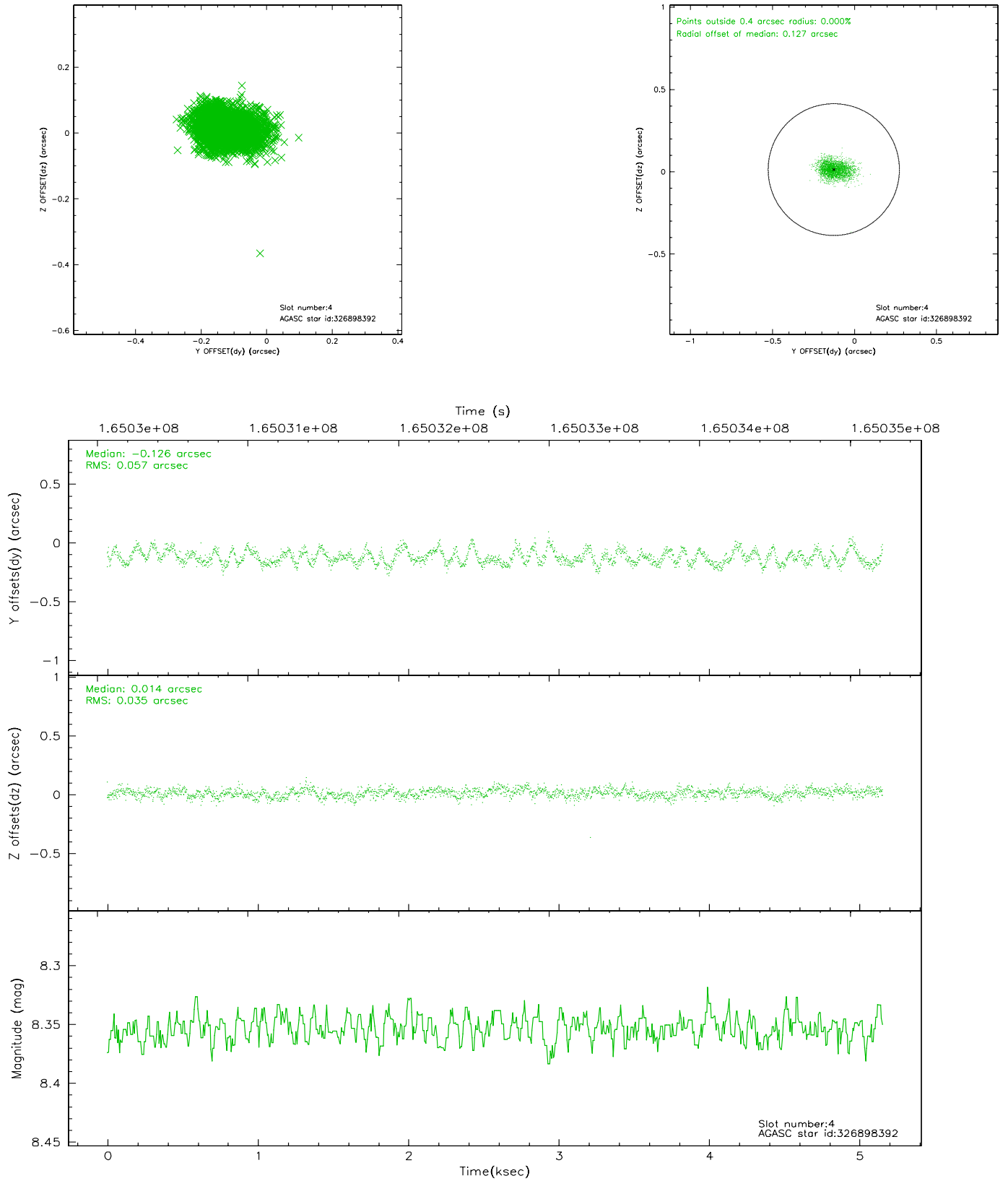
slot	status	id	mag	n_pts	med_dy	med_dz	dr1	dr2	ra	dec	mean_y	mean_z
0	FID	ACIS-S-2	7.11	1258	-0.016	0.007	0.007	0.012	0.000000	0.000000	-755.65	-1730.00
1	FID	ACIS-S-4	7.20	1258	-0.029	0.006	0.006	0.012	0.000000	0.000000	2157.07	177.28
2	FID	ACIS-S-5	7.24	1258	0.014	-0.004	0.007	0.011	0.000000	0.000000	-1806.96	172.26
3	GUIDE	326769456	9.82	2514	0.231	-0.231	0.125	0.228	139.990989	30.956642	2078.49	-2186.67
4	GUIDE	326898392	8.35	2517	-0.126	0.014	0.070	0.117	141.640946	31.182886	-1189.52	1796.13
5	GUIDE	326901416	9.73	2516	-0.025	0.044	0.106	0.169	141.104707	31.554923	-1505.71	-302.84
6	GUIDE	326901944	9.41	2516	-0.063	0.183	0.088	0.138	141.495586	31.315890	-1374.60	1167.85
7	GUIDE	326903944	7.62	2516	-0.020	-0.015	0.061	0.096	141.372366	30.493208	1369.13	2348.46

2.4 Star Slots

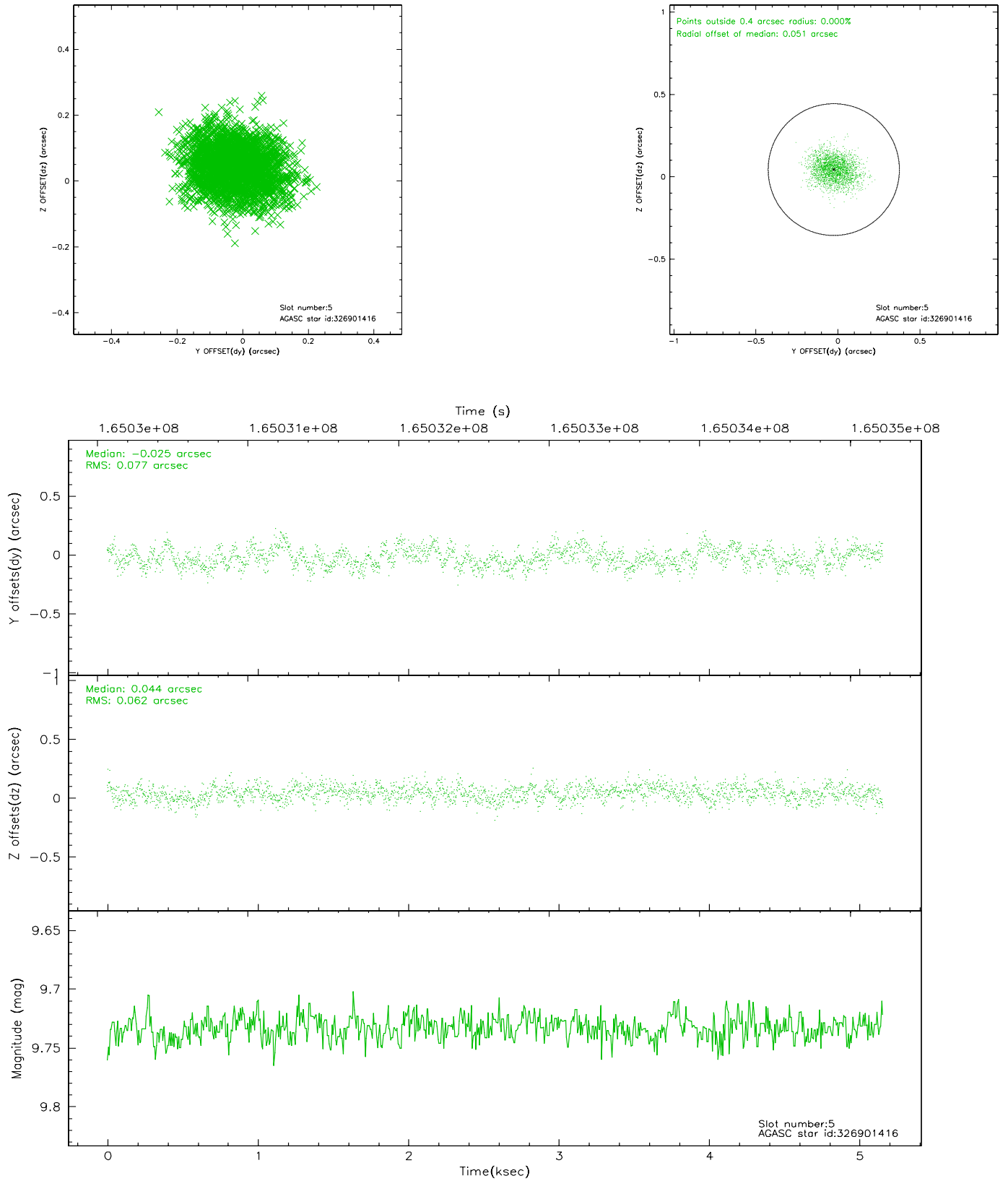
2.4.1 Slot 3



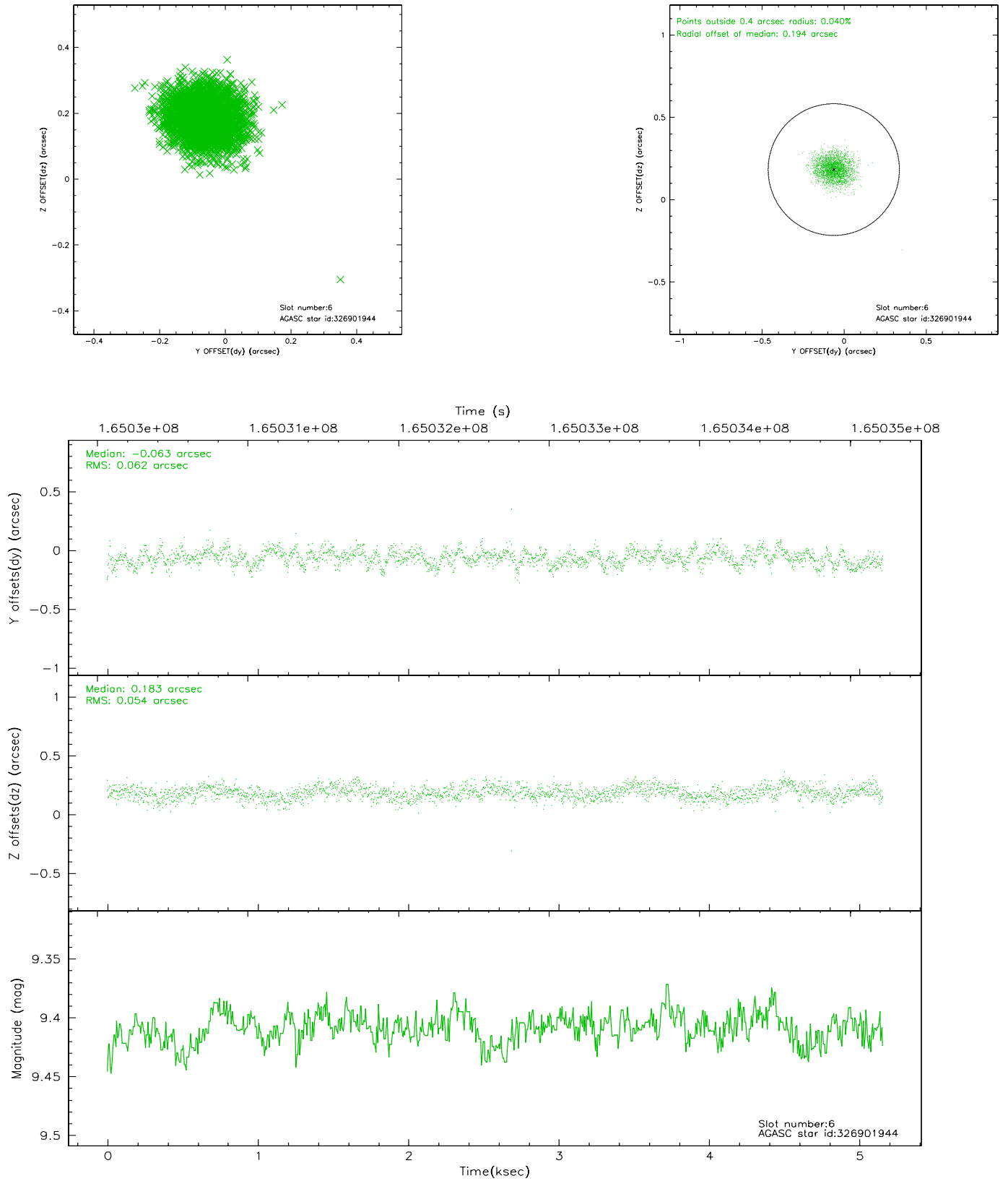
2.4.2 Slot 4



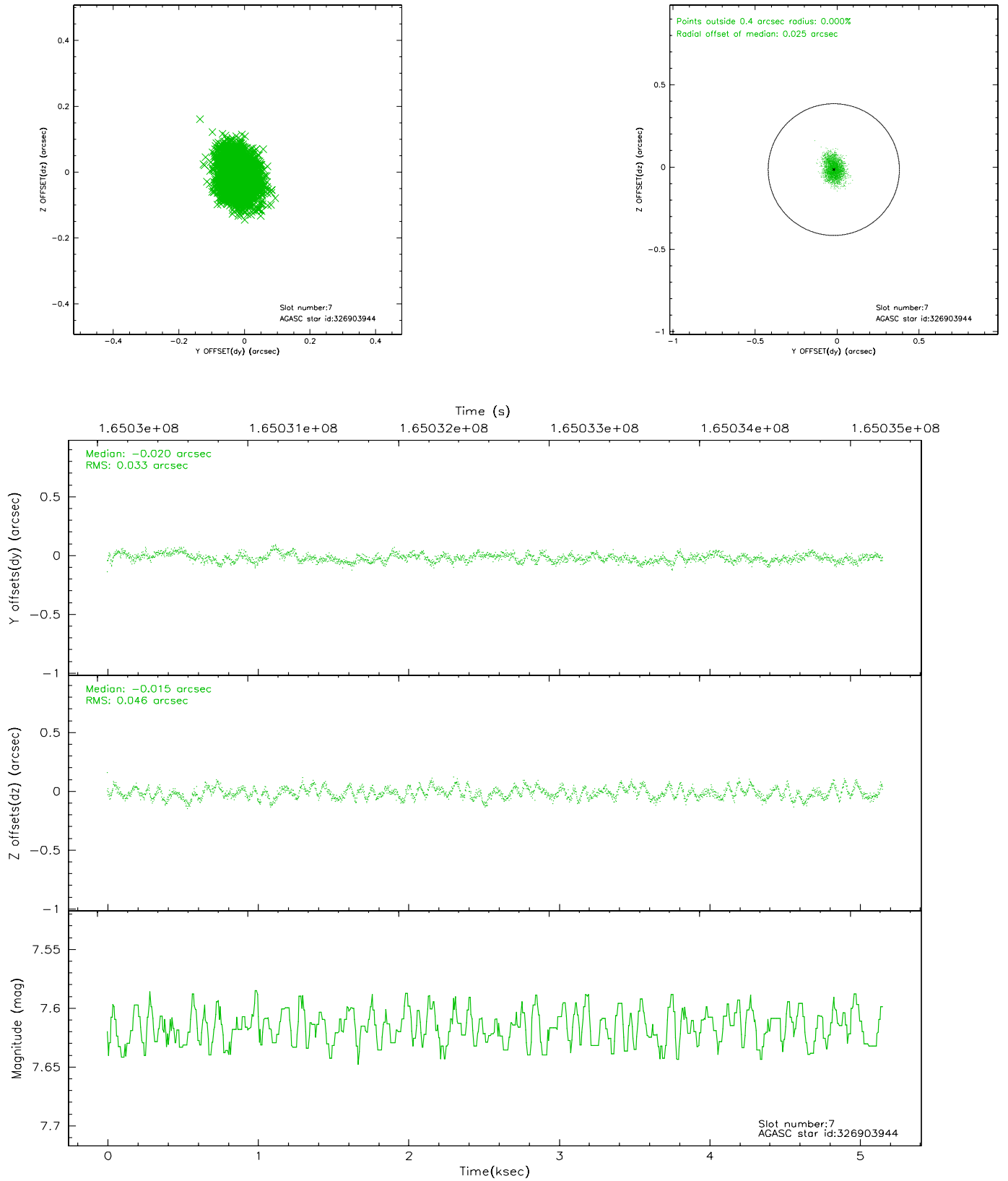
2.4.3 Slot 5



2.4.4 Slot 6

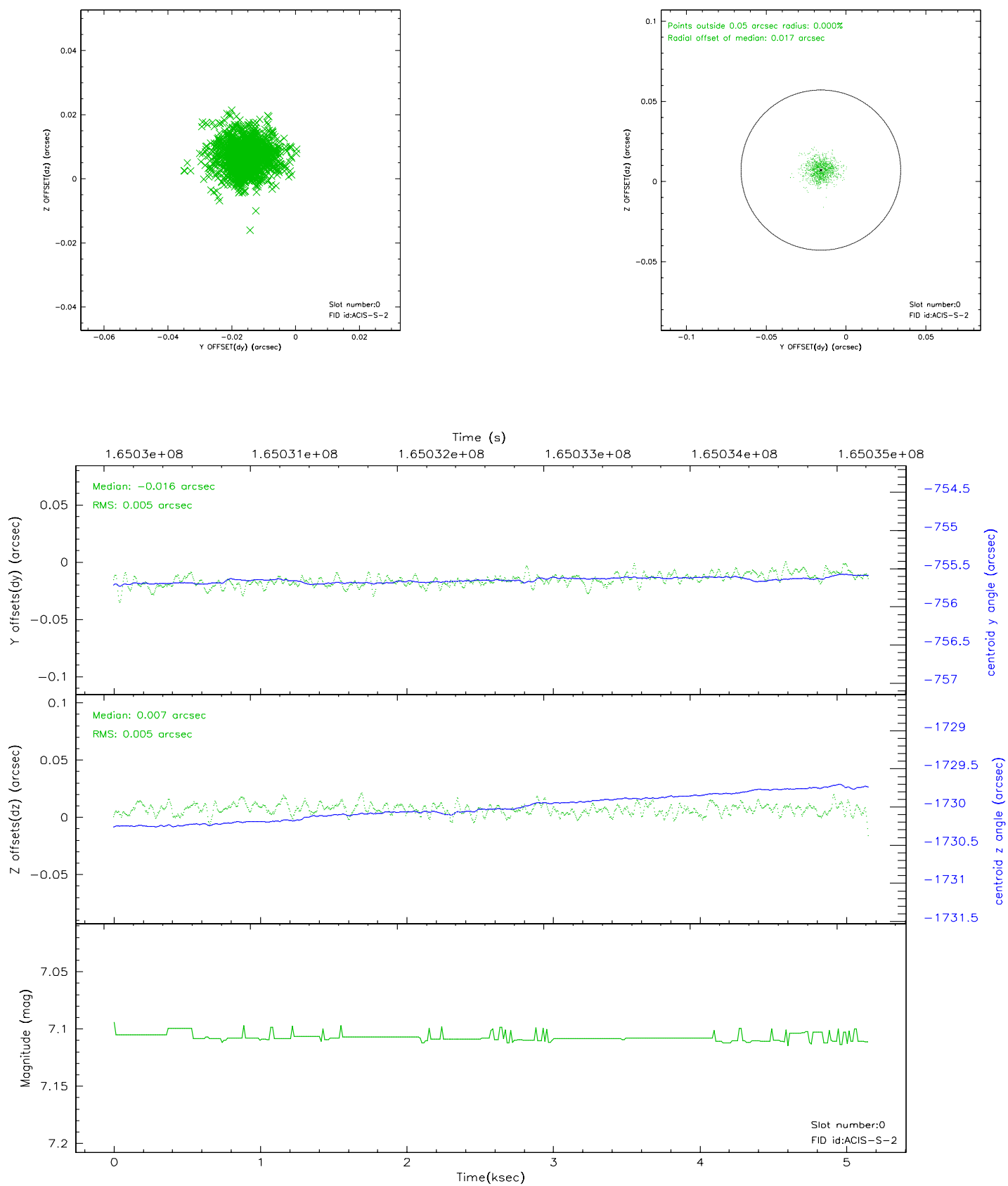


2.4.5 Slot 7

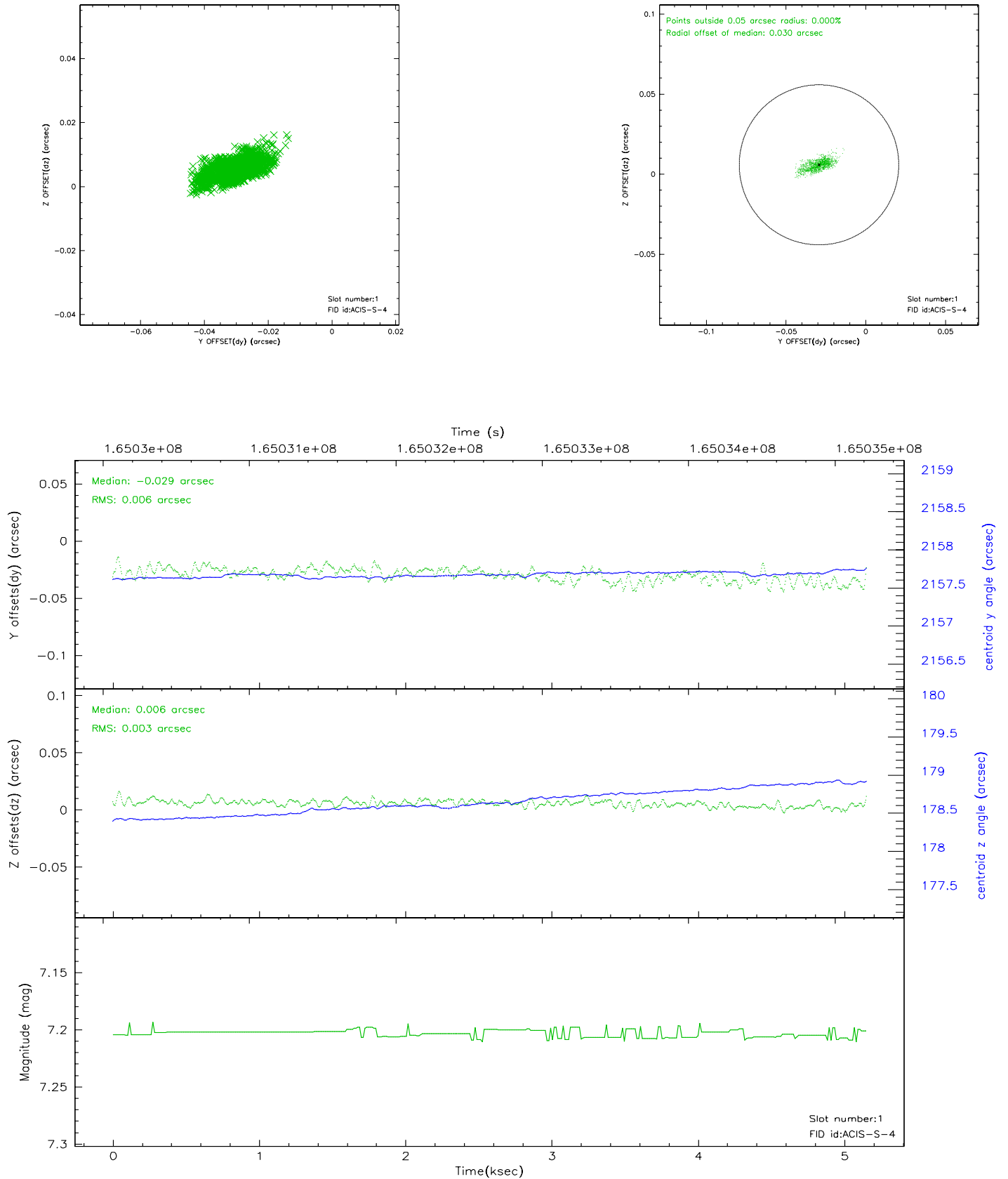


2.5 FID Slots

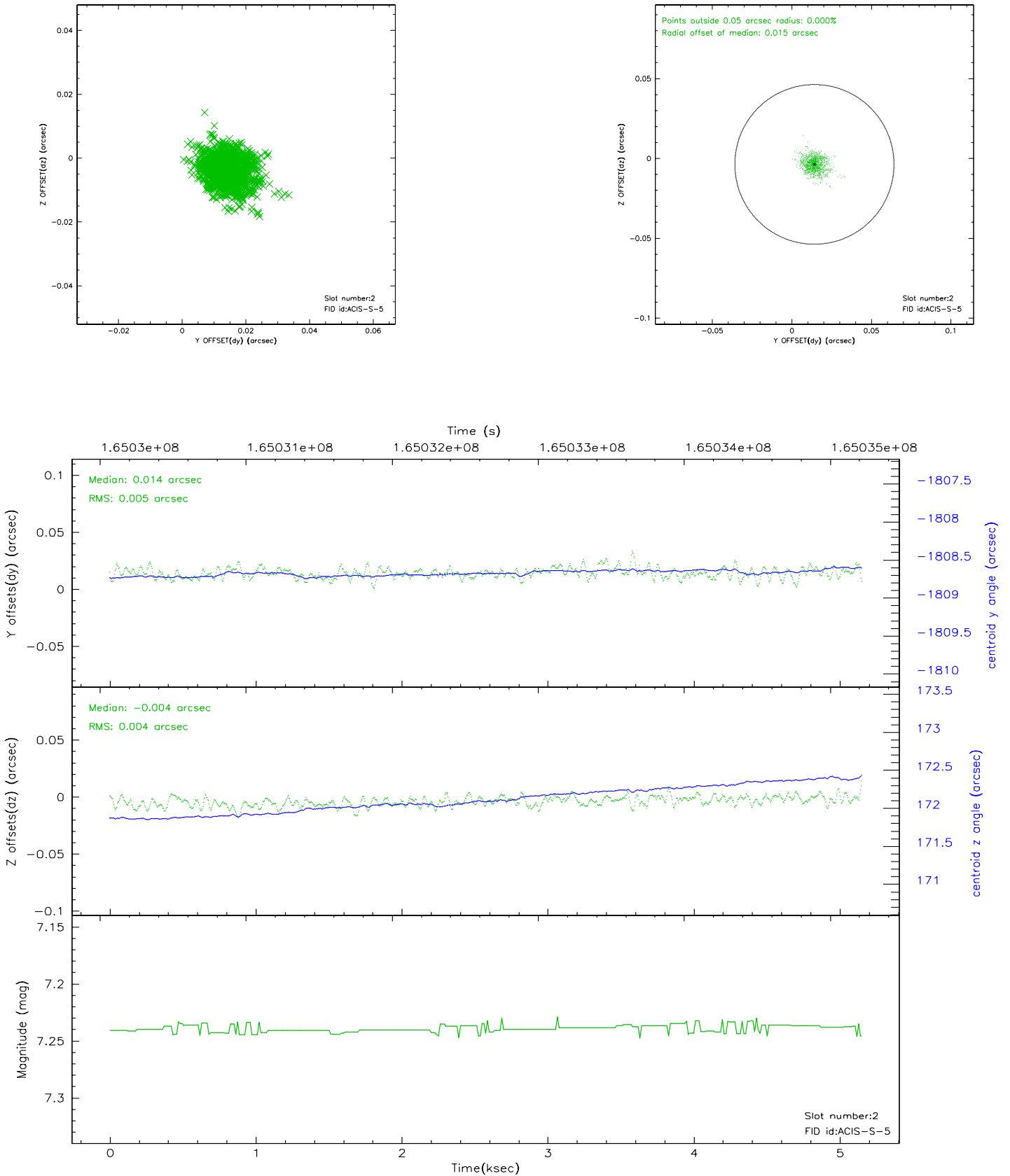
2.5.1 Slot 0



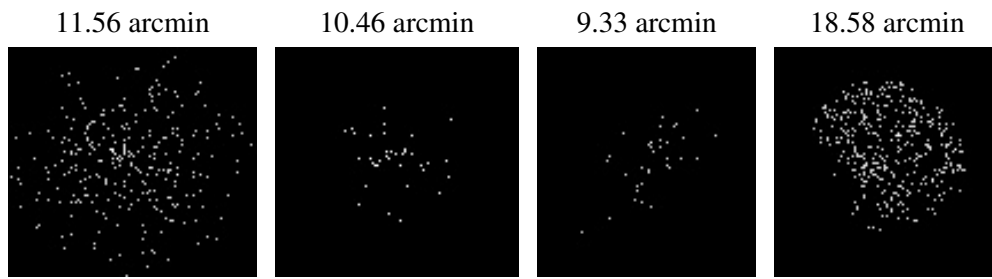
2.5.2 Slot 1



2.5.3 Slot 2



3 Point Sources



A Summary

A.1 Status

V&V Scientist	Beth Sundheim
V&V Date (YYYY-MM-DD)	2006.07.26
V&V Edition	1
V&V Disposition and Status	OK
V&V Charge Time	5.151

A.2 Comments