

V&V Reference Report

L2 ASCDS Version : 7.6.8

Observation 4119 - L2 Version 001
Chandra X-Ray Center

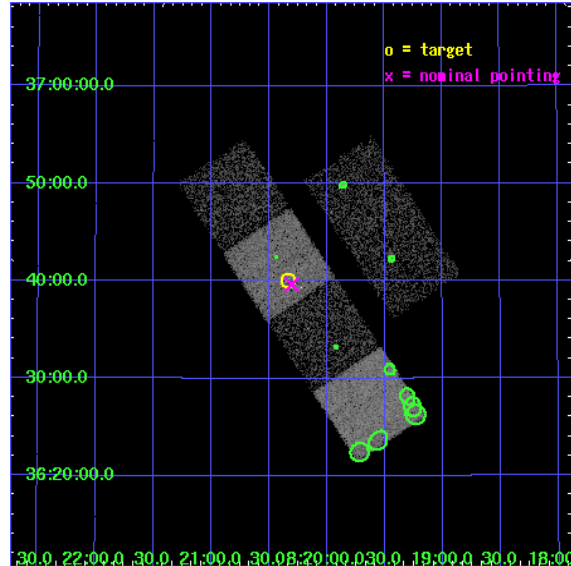
L2 Processing Date : Jul 28 2006

Contents

1	Front	2
2	OBI	3
2.1	OBI	3
2.1.1	Images	3
2.1.2	Bias	3
2.1.3	Parameters	4
2.1.4	Events	4
2.2	Compared Parameters	5
2.3	Aspect	6
2.4	Star Slots	9
2.4.1	Slot 3	9
2.4.2	Slot 4	10
2.4.3	Slot 5	11
2.4.4	Slot 6	12
2.4.5	Slot 7	13
2.5	FID Slots	14
2.5.1	Slot 0	14
2.5.2	Slot 1	15
2.5.3	Slot 2	16
3	Point Sources	17
A	Summary	18
A.1	Status	18
A.2	Comments	18

1 Front

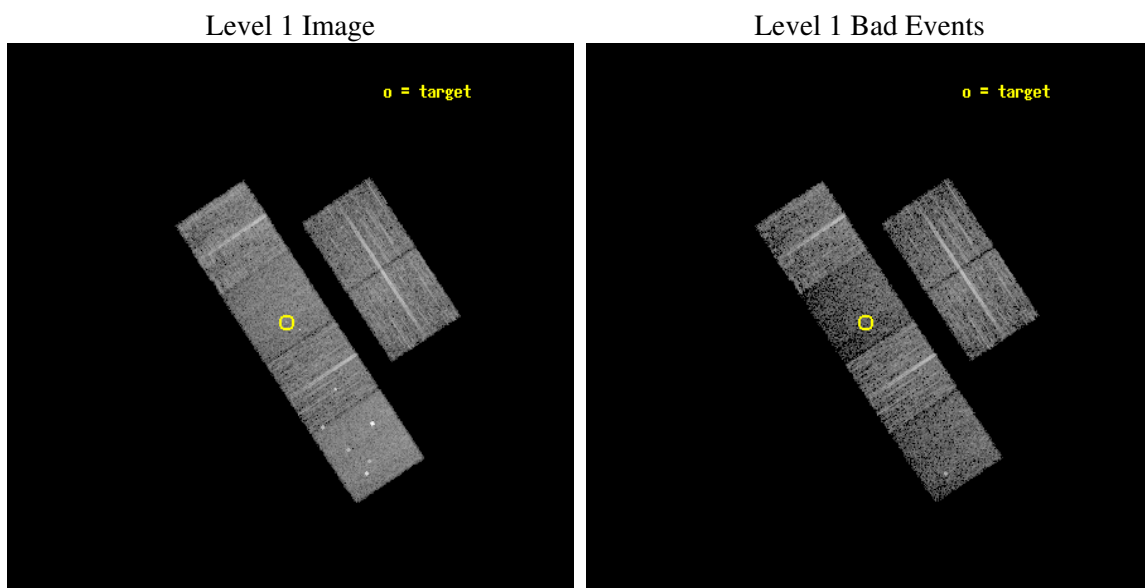
seq_num	700798
obs_id	4119
title	WHAT KIND OF JETS DOES NATURE MAKE? X-RAY CHARACTERIZATION OF THE FIRST FLAT SPECTRUM SAMPLE
observer	Dr. Giovanni Fossati
object	FIRST J0820+3640
dtcycle	0
cycle	P
ra_targ	125.084167
dec_targ	36.668
ra_nom	125.07584371959
dec_nom	36.66101558384
roll_nom	236.55962270116
revision	2
ontime	7369.5999725461
livetime	7276.2816602534
ontime2	7369.5999725461
ontime3	7369.5999725461
ontime5	7369.5999725461
ontime6	7369.5999725461
ontime7	7369.5999725461
ontime8	7369.5999725461
l2events	50878



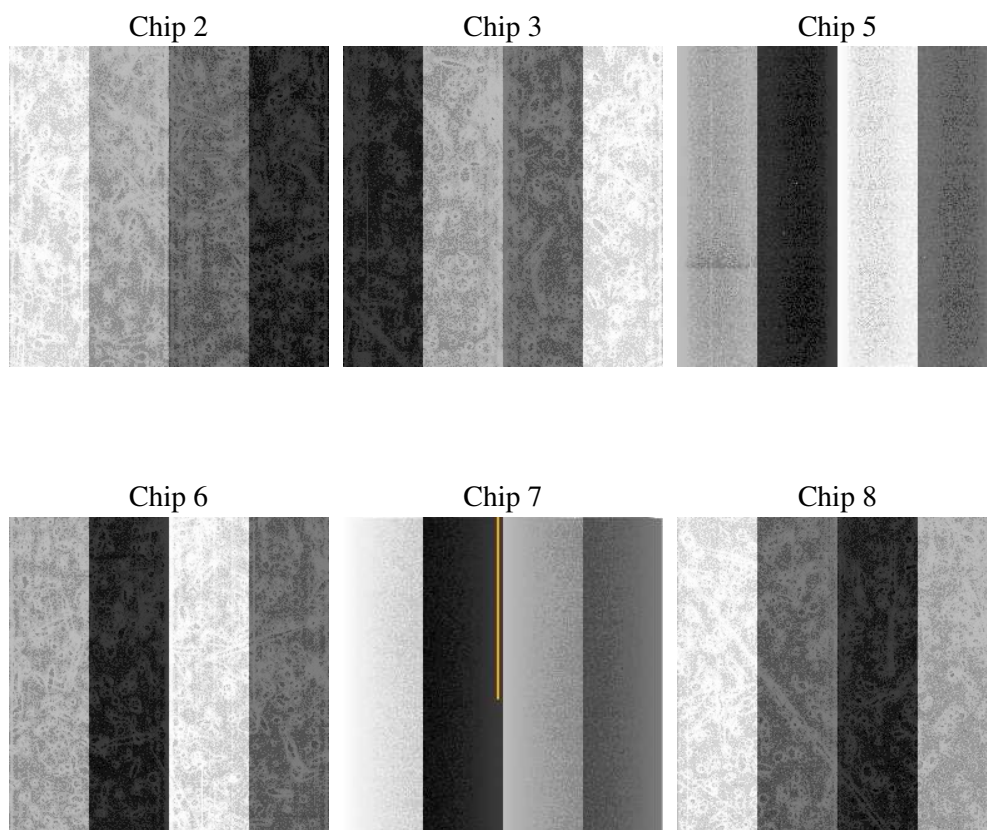
2 OBI

2.1 OBI

2.1.1 Images



2.1.2 Bias



2.1.3 Parameters

obi_num	0
ascdsver	7.6.8
caldsver	3.2.2
date	2006-07-28T03:13:41
revision	2

sched_exp_time	7407.000000
ontime	7373.2965401411
ontime2	7373.2965401411
ontime3	7373.2965401411
ontime5	7373.2965401411
ontime6	7373.2965401411
ontime7	7373.2965401411
ontime8	7373.2965401411
l1events	241294

2.1.4 Events

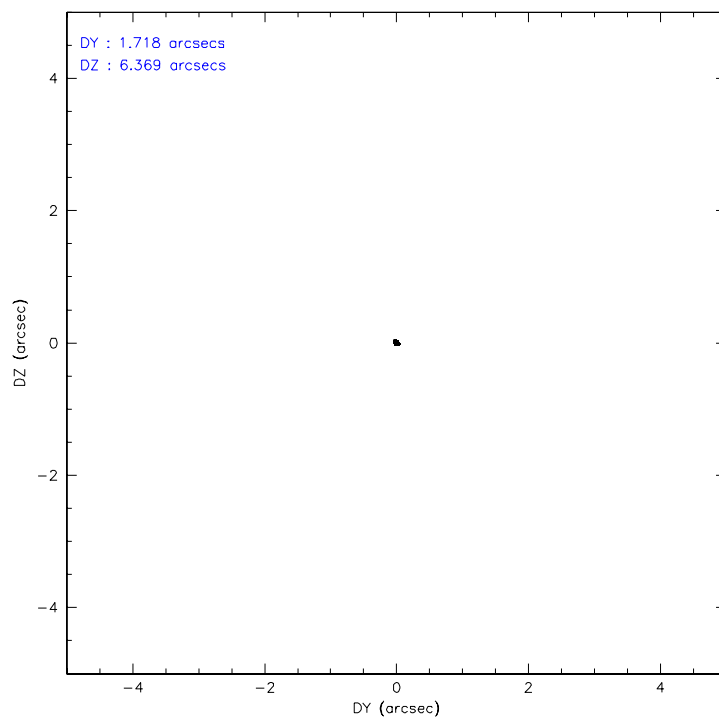
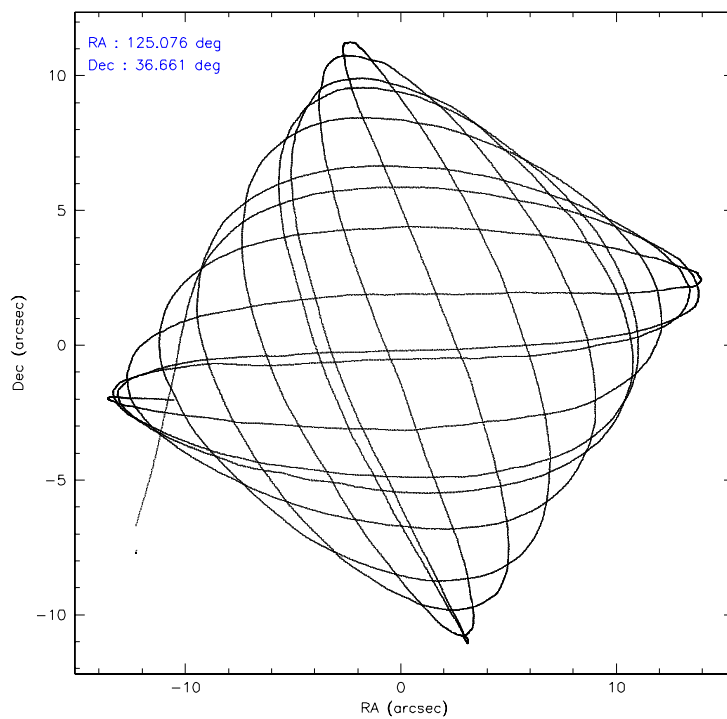
	ccd 2	ccd 3	ccd 5	ccd 6	ccd 7	ccd 8
level 1 events	40253	35027	47355	38762	35725	44172
rejected events	36709	31704	21910	34816	18349	34098
rejected %	91%	90%	46%	89%	51%	77%

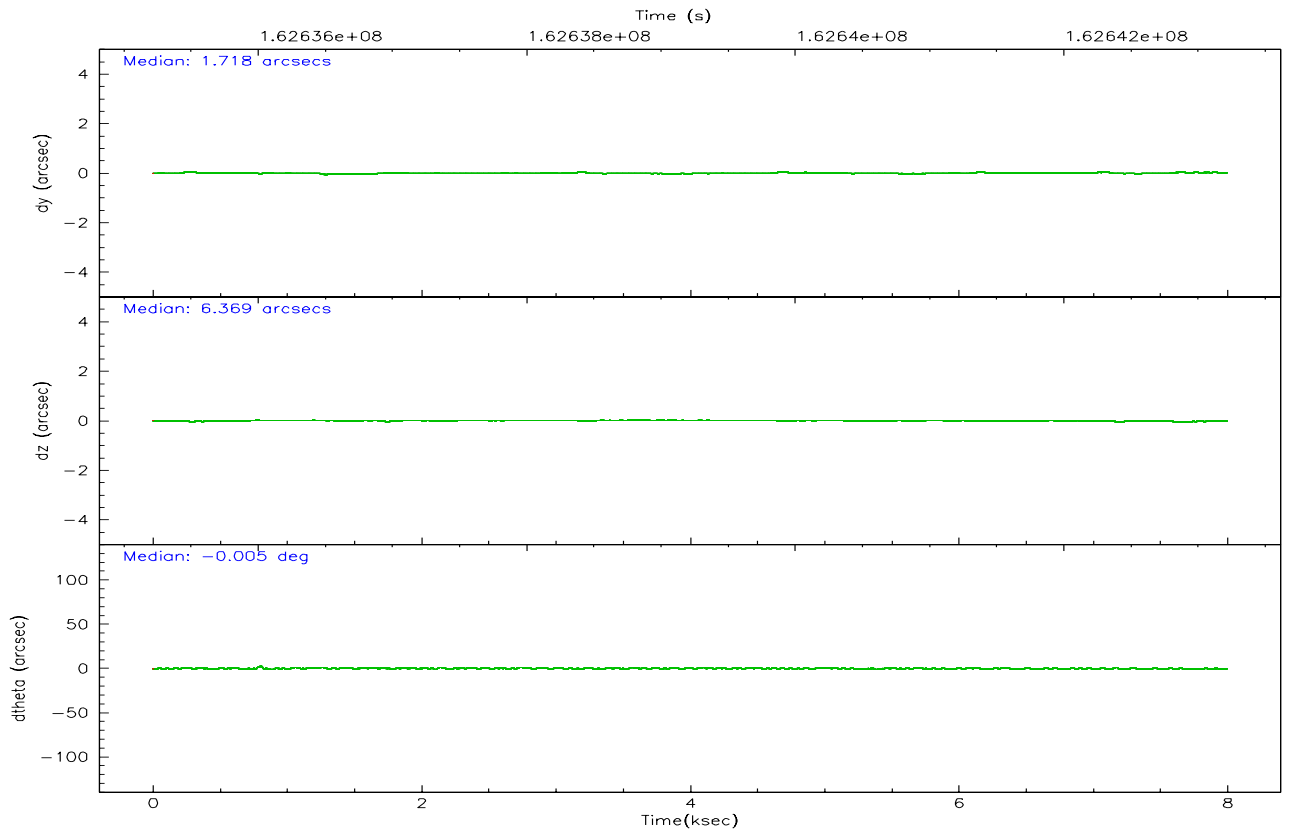
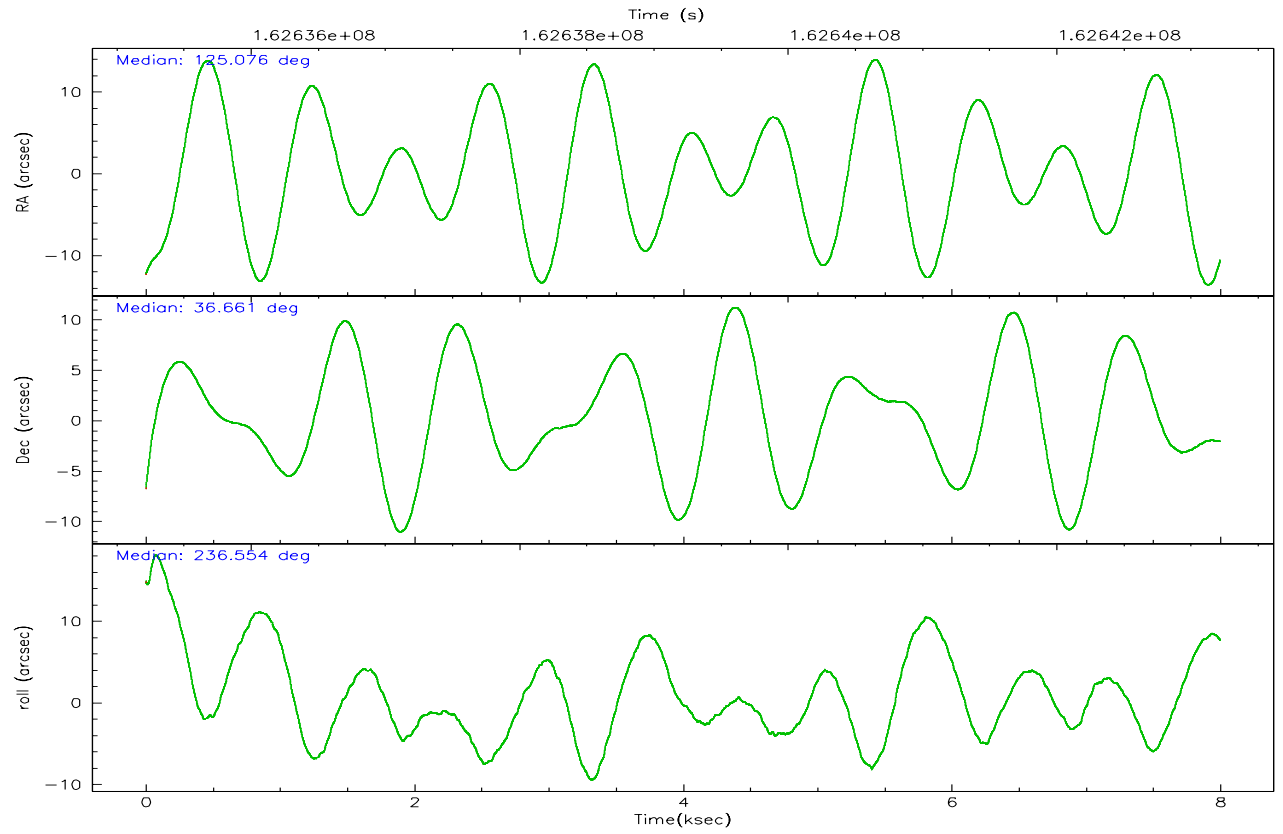
	ccd 2	ccd 3	ccd 5	ccd 6	ccd 7	ccd 8
grade 0 events	1290	1256	3807	1616	1390	2728
	3%	3%	8%	4%	3%	6%
grade 1 events	16	23	39	10	26	37
	0%	0%	0%	0%	0%	0%
grade 2 events	808	696	7854	783	4345	2447
	2%	1%	16%	2%	12%	5%
grade 3 events	377	403	740	446	1180	1191
	0%	1%	1%	1%	3%	2%
grade 4 events	412	389	685	444	1151	1053
	1%	1%	1%	1%	3%	2%
grade 5 events	1012	1200	2539	1229	2781	1713
	2%	3%	5%	3%	7%	3%
grade 6 events	662	581	12382	660	9325	2665
	1%	1%	26%	1%	26%	6%
grade 7 events	35676	30479	19309	33574	15527	32338
	88%	87%	40%	86%	43%	73%

2.2 Compared Parameters

Parameter	Planned	Actual	Parameter	Planned	Actual
Instrument	ACIS	ACIS	Obspar format version number	6	6
Detector	ACIS-235678	ACIS-235678	Obspar file type	PREDICTED	ACTUAL
Grating	NONE	NONE	Obspar update status	NONE	UPDATED
Data mode	VFAINT	VFAINT	On-chip summing requested	N	N
Observation mode	POINTING	POINTING	Subarray requested	NONE	NONE
Pointing RA	125.077441	125.0758437195921	Alternating exposures requested	N	N
Pointing Dec	36.688185	36.6610155838401	Primary exposure time	0.000000	3.2
Pointing Roll	236.402046	236.559622701159			
SIM focus pos (mm)	-0.684267	-0.6828225247311905			
SIM defocus (mm)	0	0.001444936568705701			
SIM translation stage pos (mm)	-190.132523	-190.1400660498719			
SIM translation stage offset (mm)	0	0.00754346686406393			
Observation start time	162635804.184000	162634639.3839			
Observation start date	2003-02-26T08:35:40	2003-02-26T08:17:19			
Observation end time	162643211.184000	162643477.95927			
Observation end date	2003-02-26T10:39:07	2003-02-26T10:44:37			
Read mode	TIMED	TIMED			

2.3 Aspect



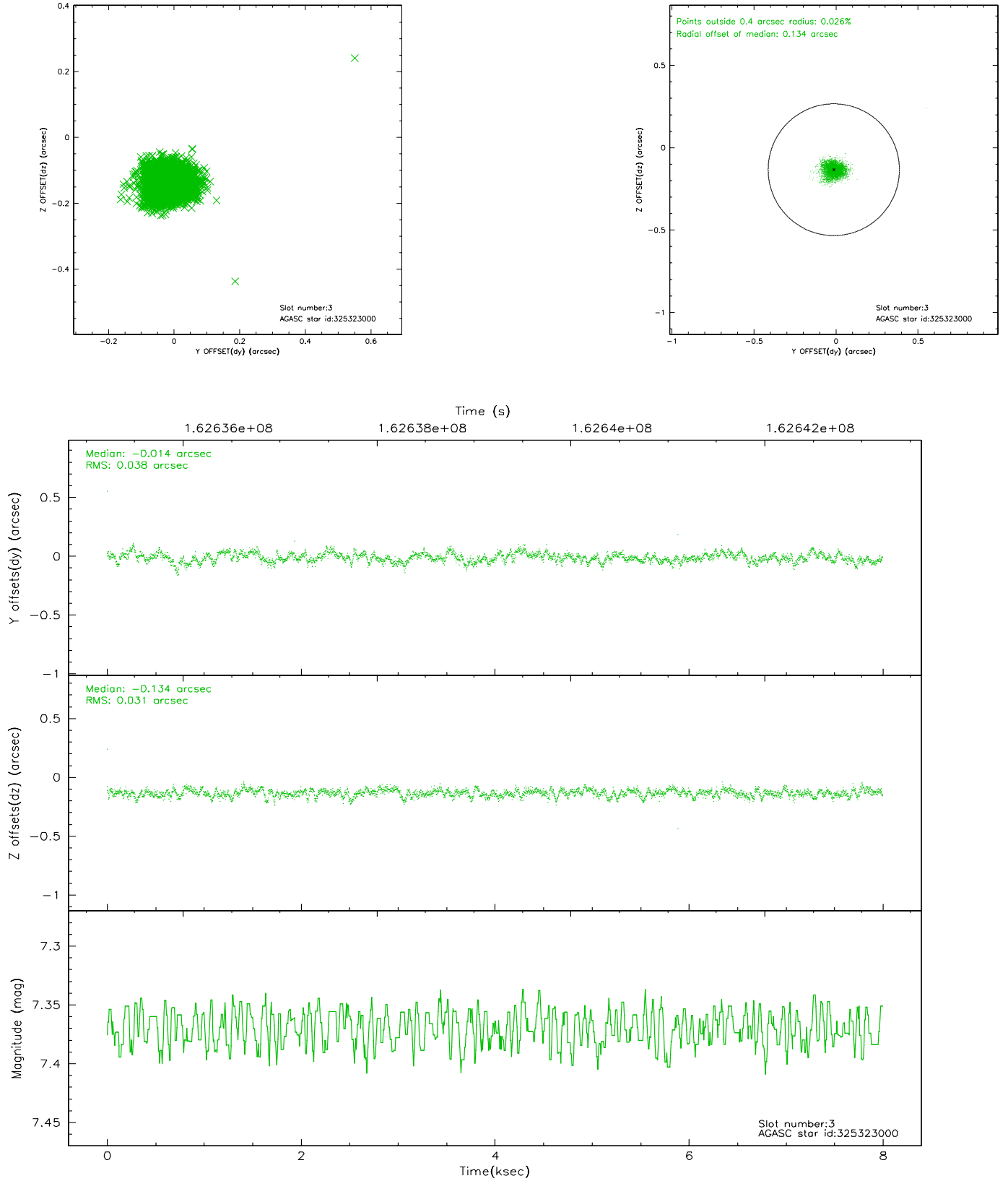


Slot Statistics

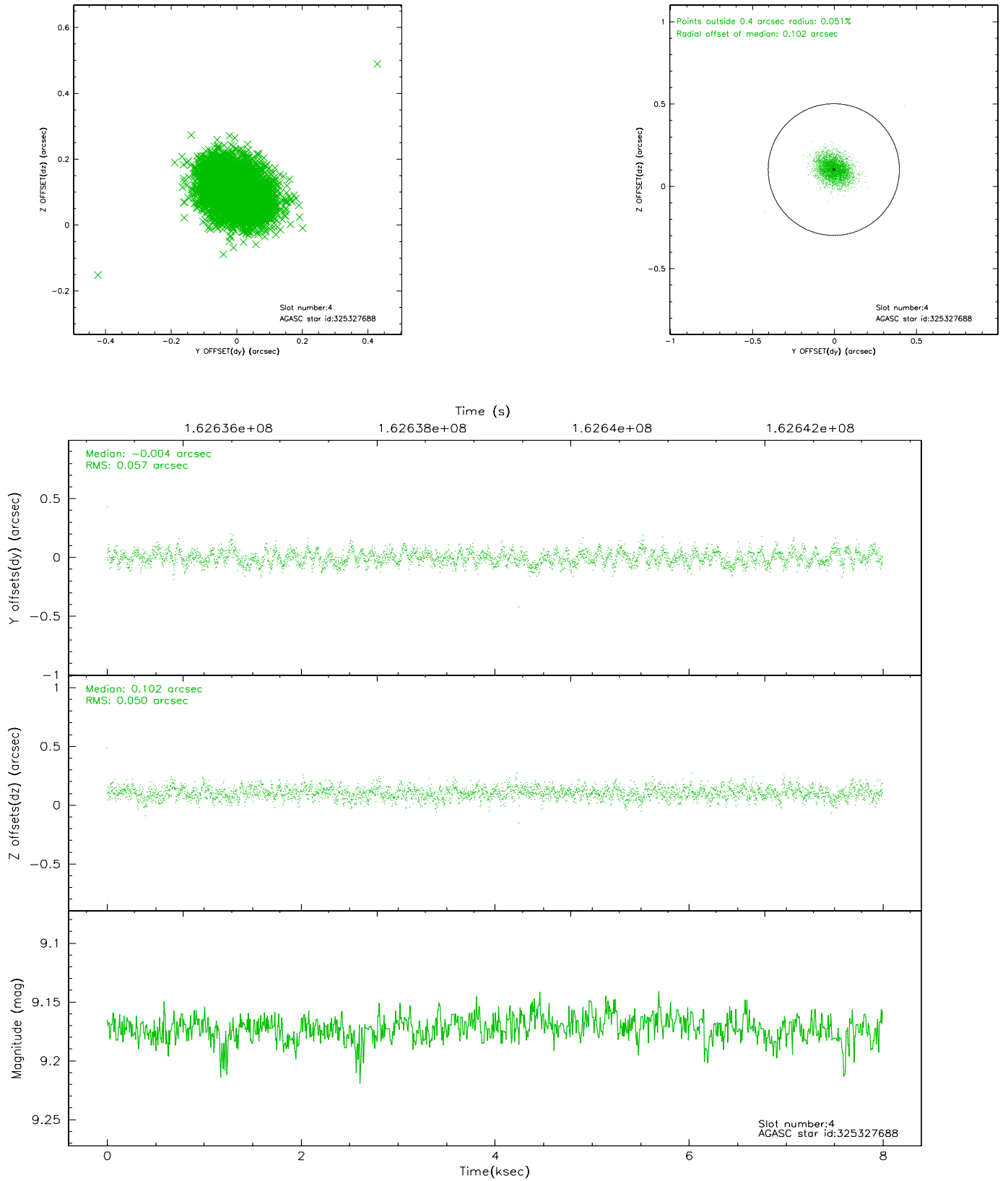
slot	status	id	mag	n_pts	med_dy	med_dz	dr1	dr2	ra	dec	mean_y	mean_z
0	FID	ACIS-S-2	7.12	1951	-0.051	0.012	0.006	0.010	0.000000	0.000000	-754.34	-1727.52
1	FID	ACIS-S-4	7.21	1951	-0.019	0.021	0.005	0.008	0.000000	0.000000	2158.61	180.30
2	FID	ACIS-S-5	7.24	1950	0.038	-0.024	0.006	0.010	0.000000	0.000000	-1806.23	174.65
3	GUIDE	325323000	7.37	3901	-0.014	-0.134	0.050	0.082	124.596770	37.056165	-341.73	-1885.08
4	GUIDE	325327688	9.17	3901	-0.004	0.102	0.079	0.128	125.333169	36.318381	697.67	1353.97
5	GUIDE	325328184	9.77	3897	-0.092	-0.041	0.105	0.172	124.978246	37.418938	-2034.02	-1691.69
6	GUIDE	325323760	9.26	3898	0.064	-0.002	0.101	0.162	124.711537	36.081292	2406.94	321.21
7	GUIDE	325320736	9.25	3899	0.045	0.072	0.104	0.162	125.455366	36.056506	1284.40	2173.95

2.4 Star Slots

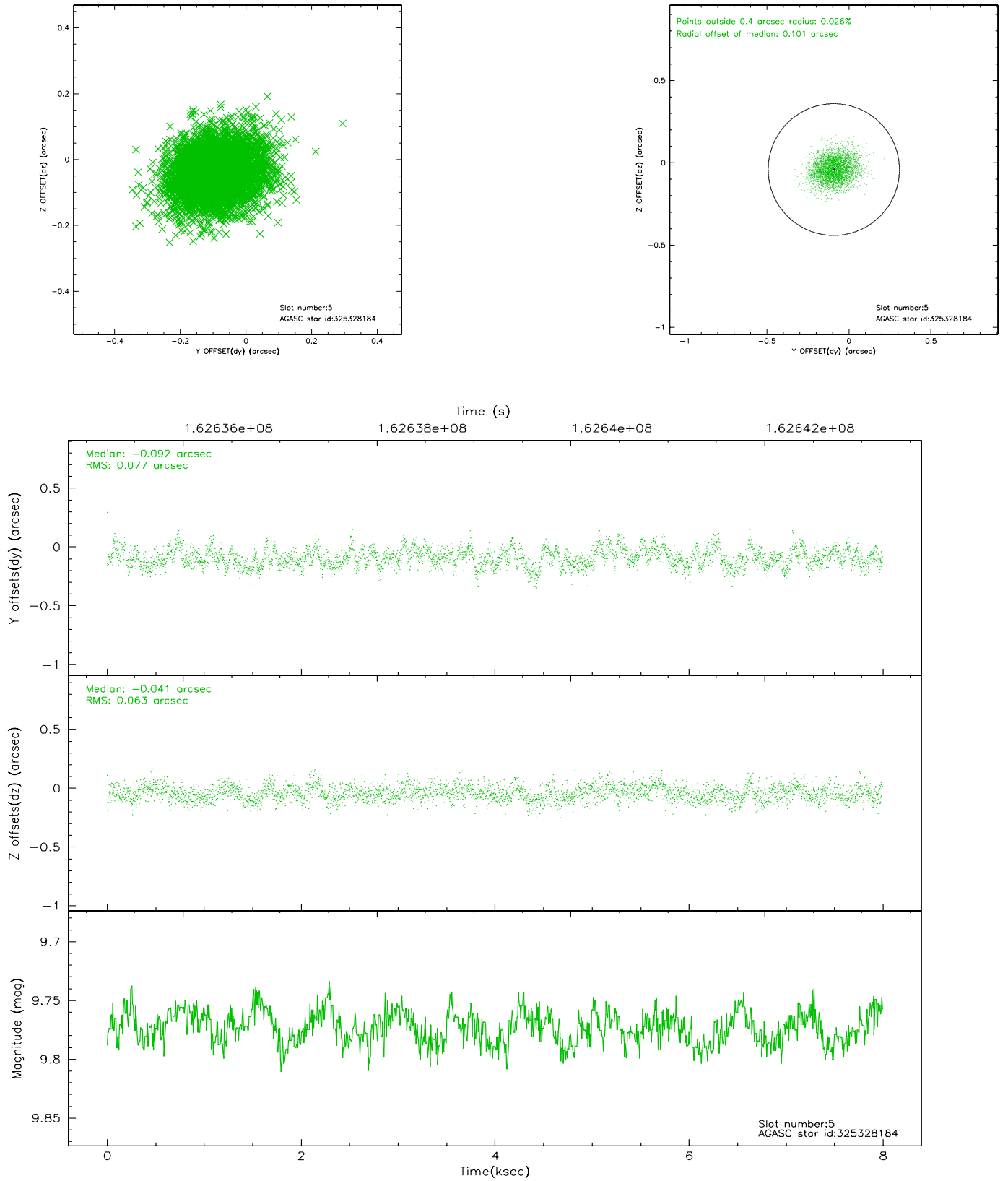
2.4.1 Slot 3



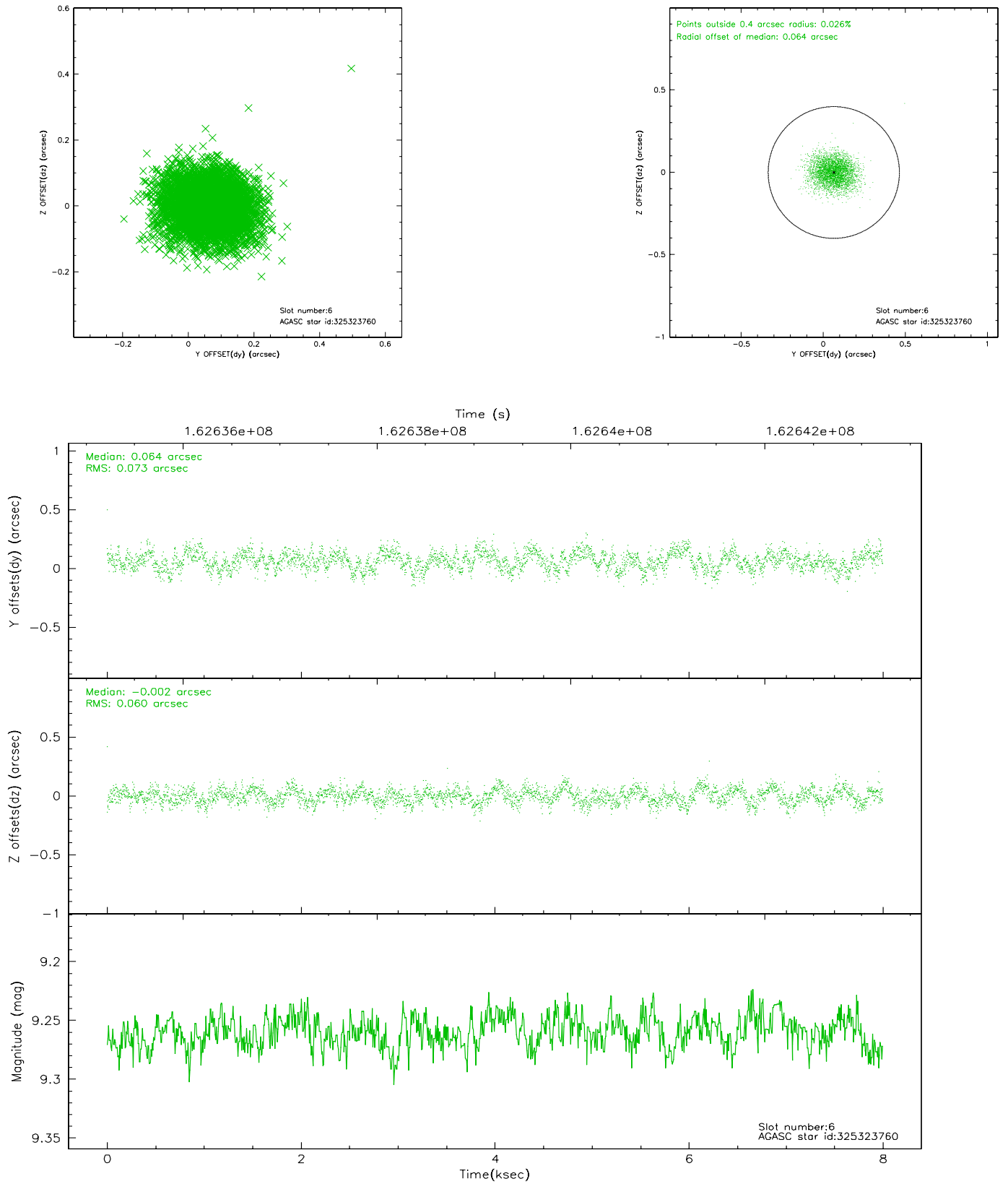
2.4.2 Slot 4



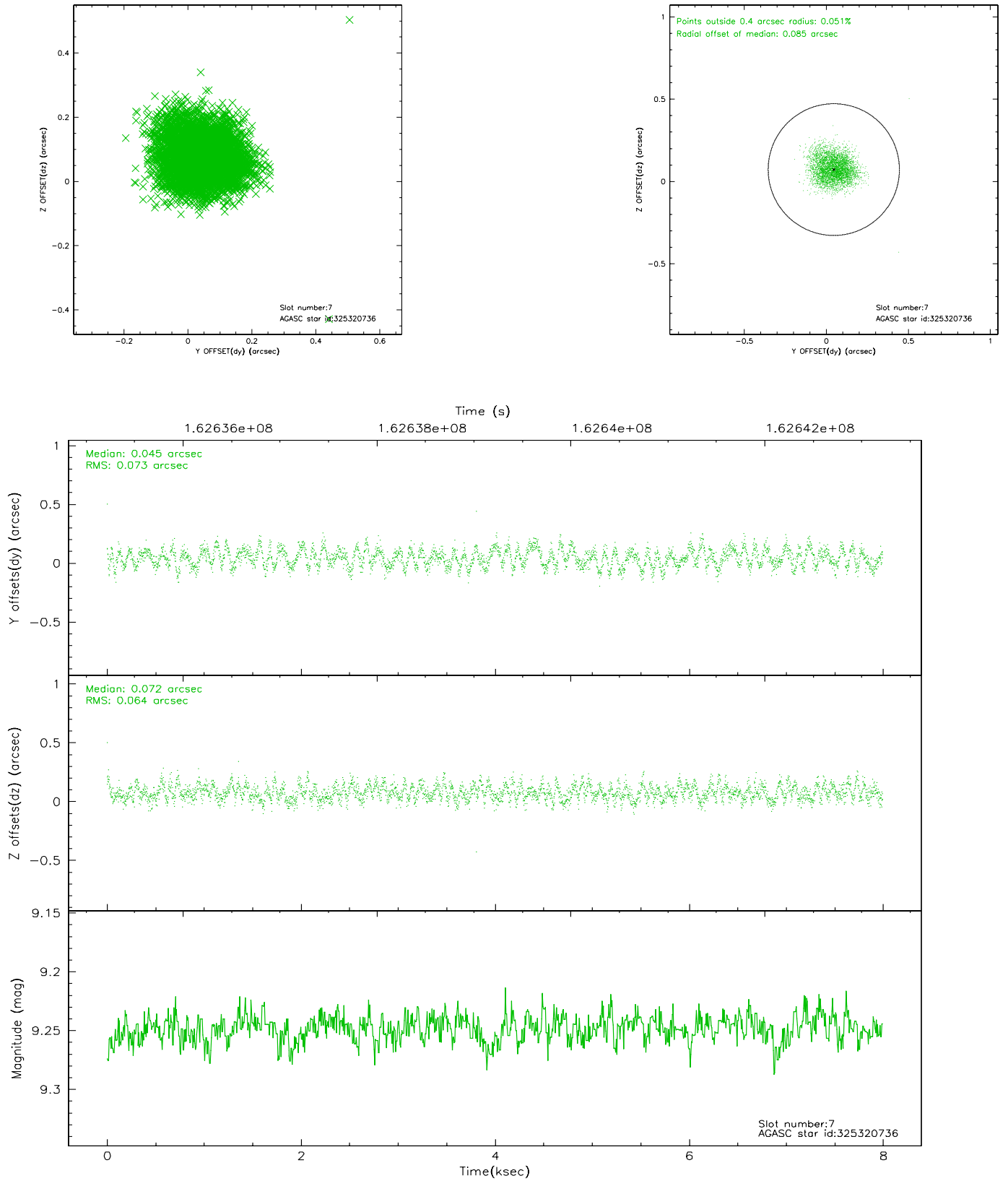
2.4.3 Slot 5



2.4.4 Slot 6

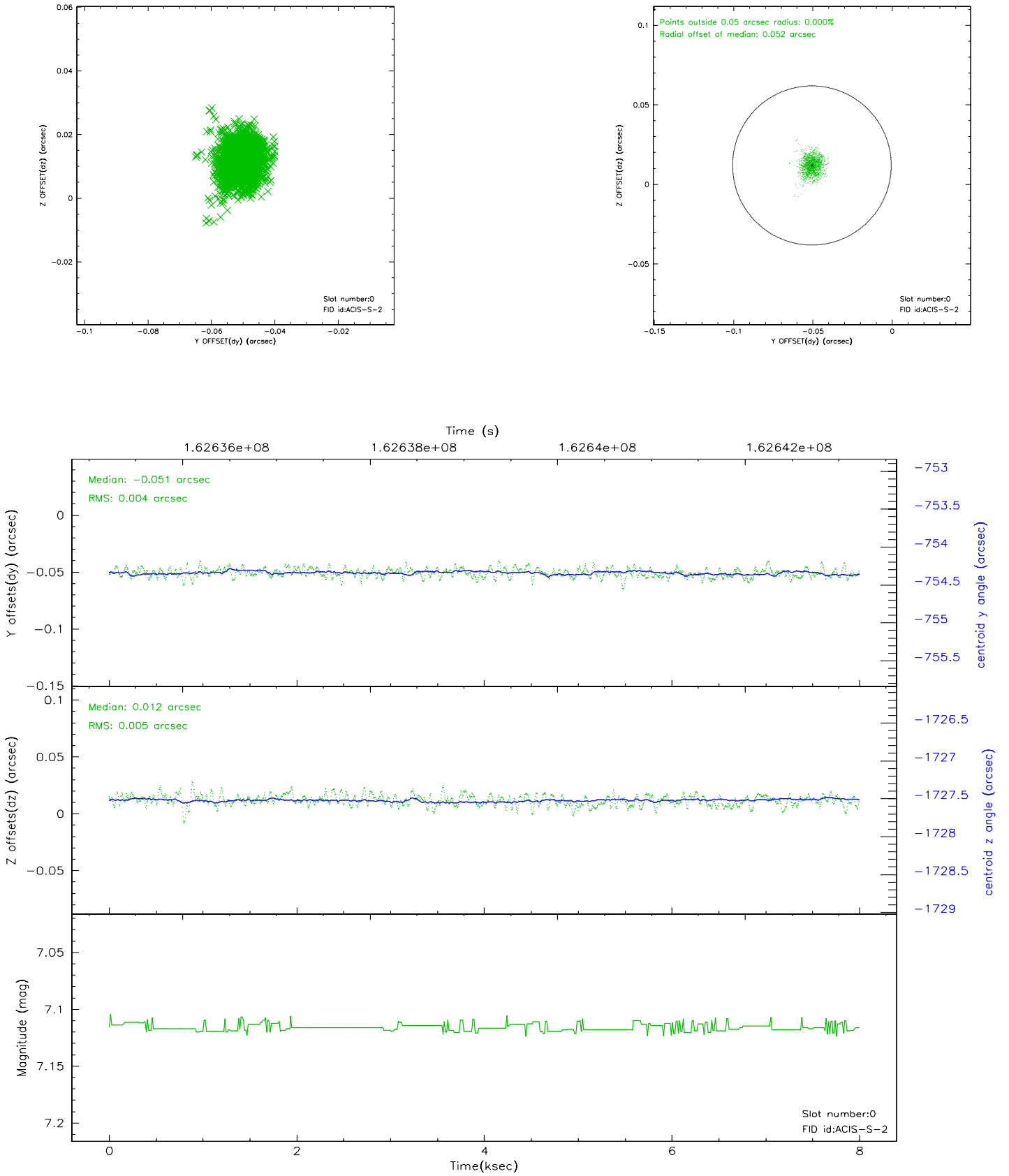


2.4.5 Slot 7

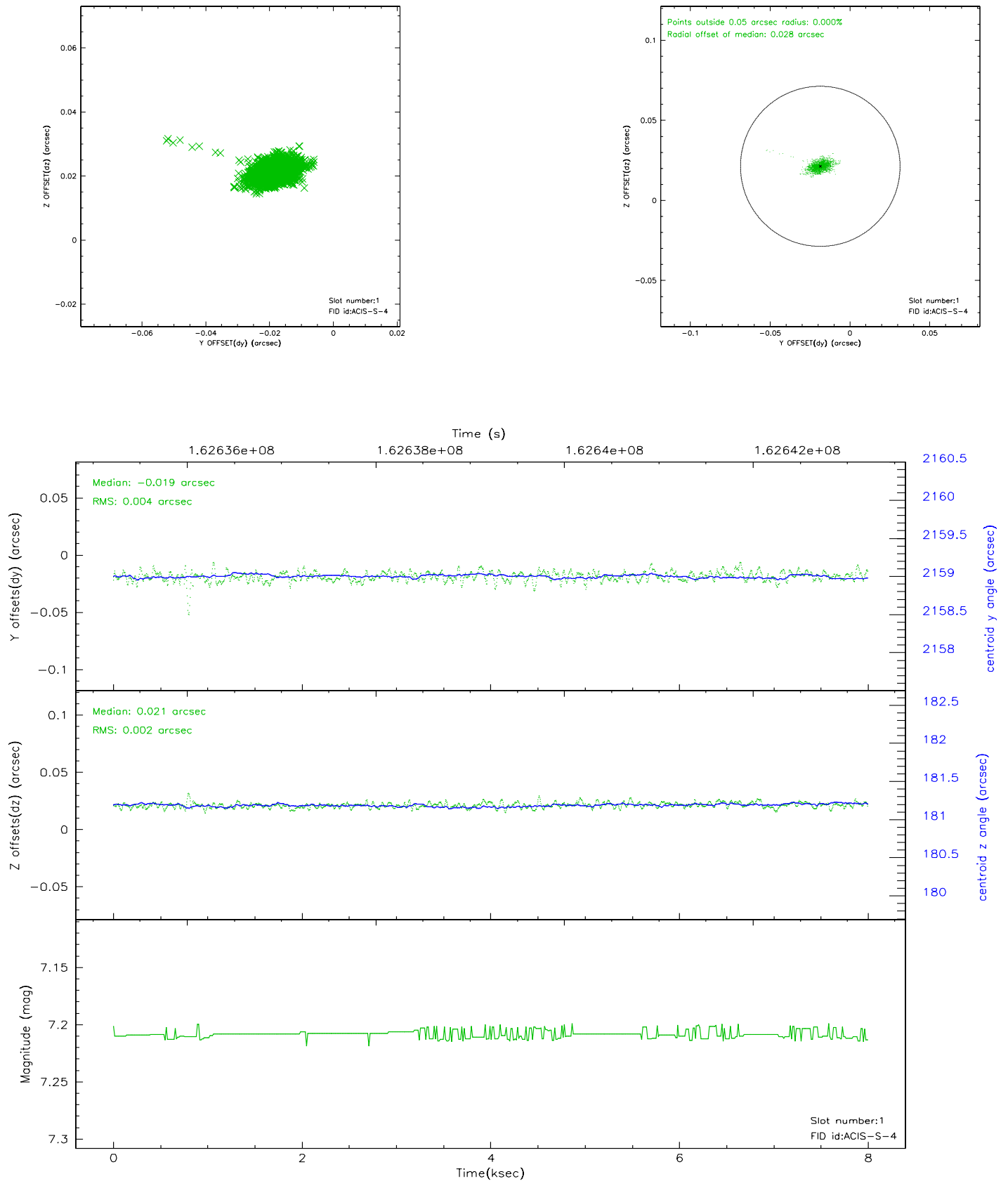


2.5 FID Slots

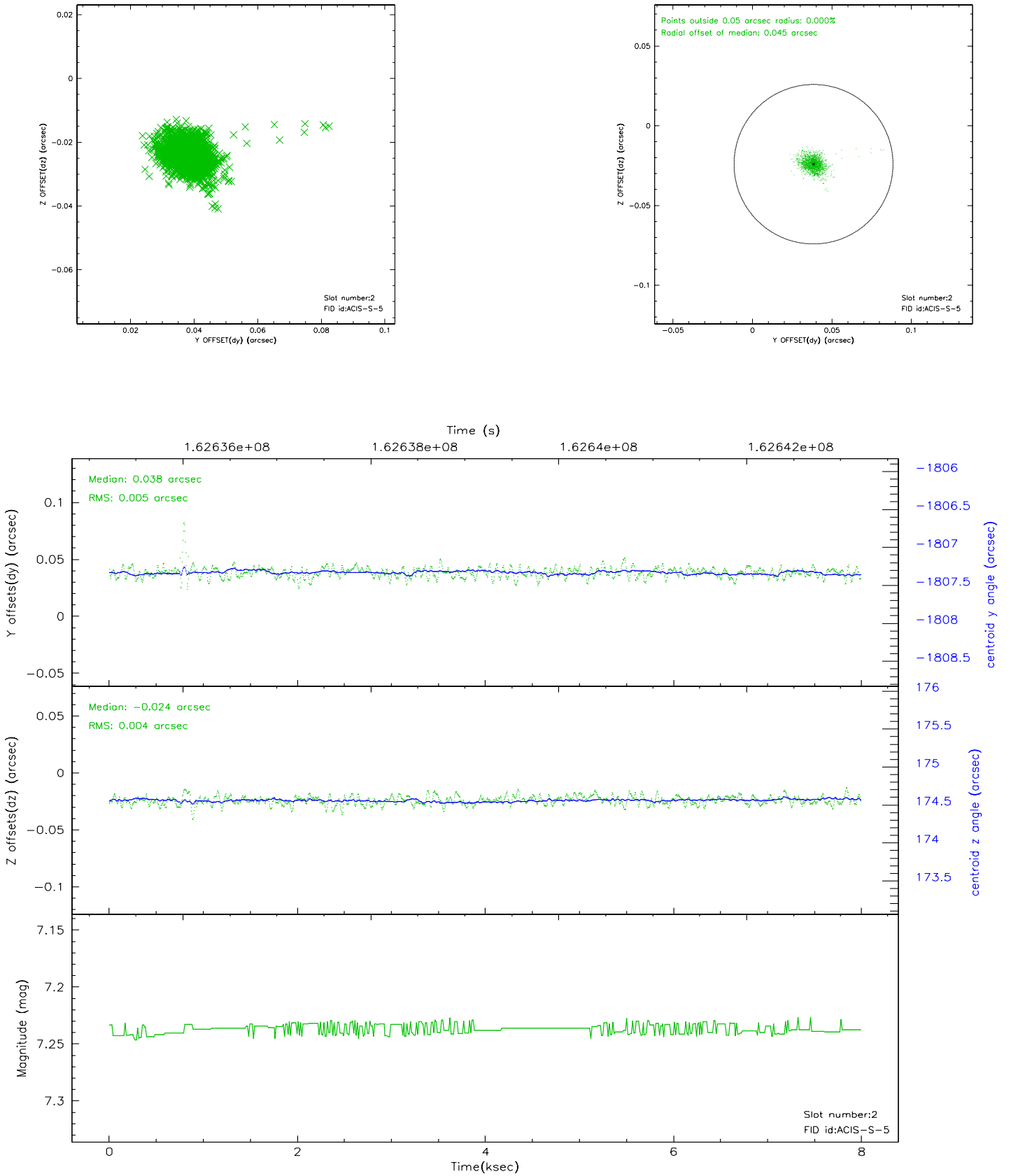
2.5.1 Slot 0



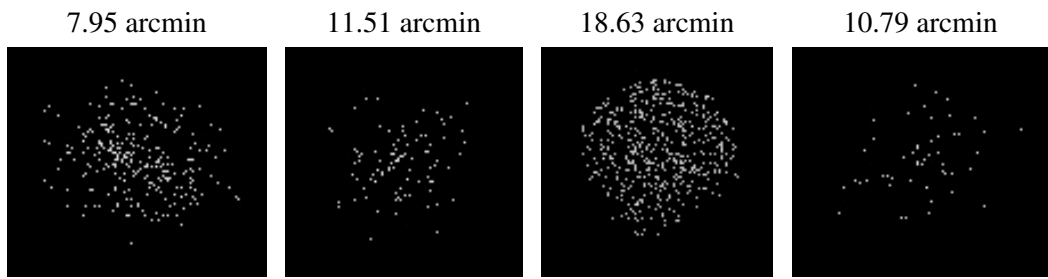
2.5.2 Slot 1



2.5.3 Slot 2



3 Point Sources



A Summary

A.1 Status

V&V Scientist	Jen Lauer
V&V Date (YYYY-MM-DD)	2006.07.28
V&V Edition	1
V&V Disposition and Status	OK
V&V Charge Time	7.372

A.2 Comments