

V&V Reference Report

L2 ASCDS Version : 8.4.5

Observation 4104 - L2 Version 3
Chandra X-Ray Center

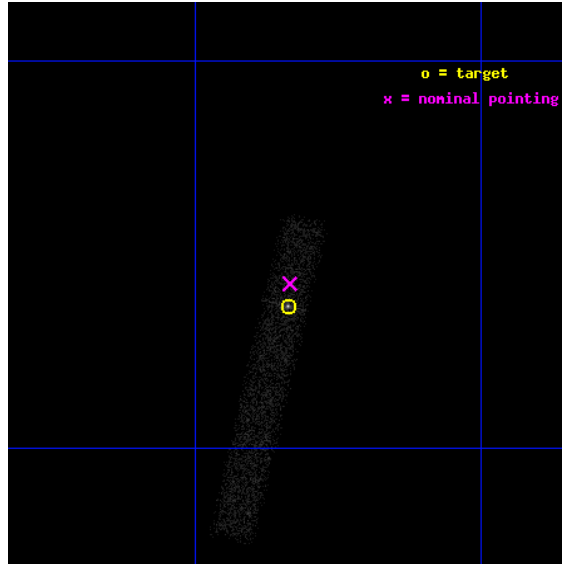
L2 Processing Date : Nov 2 2012

Contents

1	Front	2
2	OBI	3
2.1	OBI	3
2.1.1	Images	3
2.1.2	Bias	3
2.1.3	Parameters	4
2.1.4	Events	4
2.2	Compared Parameters	5
2.3	Aspect	6
2.4	Star Slots	9
2.4.1	Slot 3	9
2.4.2	Slot 4	10
2.4.3	Slot 5	11
2.4.4	Slot 6	12
2.4.5	Slot 7	13
2.5	FID Slots	14
2.5.1	Slot 0	14
2.5.2	Slot 1	15
2.5.3	Slot 2	16
A	Summary	17
A.1	Status	17
A.2	Comments	17

1 Front

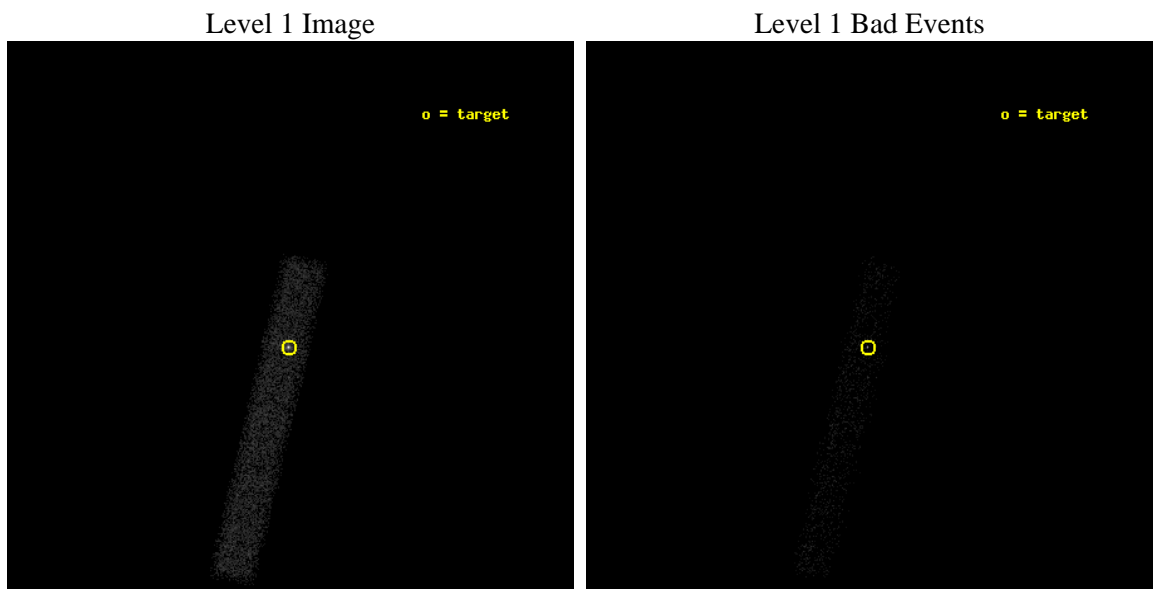
seq_num	700783	Sequence number
obs_id	4104	Observation id
title	THE X-RAY PROPERTIES OF ULTRALUMINOUS INFRARED GALAXIES (ULIGS)	Pr
observer	Professor Andrew Wilson	Principal investigator
object	F01572+0009	Source name
dtcycle	0	
cycle	P	events from which exps? Prim/Second/Both
ra_targ	29.959167	Observer's specified target RA [deg]
dec_targ	0.394611	Observer's specified target Dec [deg]
ra_nom	29.958664278107	Nominal RA [deg]
dec_nom	0.40426181709756	Nominal Dec [deg]
roll_nom	103.15702503248	Nominal Roll [deg]
revision	3	Processing version of data
ontime	10724.740205258	Sum of GTIs [s]
livetime	9726.773267965	Livetime [s]
ontime7	10724.740205258	Sum of GTIs [s]
l2events	10986	Number of level 2 events



2 OBI

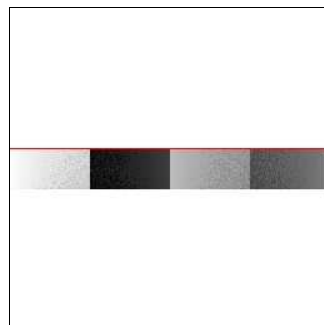
2.1 OBI

2.1.1 Images



2.1.2 Bias

Chip 7



2.1.3 Parameters

obi_num	0	Obi number	sched_exp_time	9865.000000	[s] Scheduled observation exposure time
ascdsver	8.4.5	Processing system revision	ontime	10724.740205258	Sum of GTIs [s]
caldsver	4.5.2	 	ontime7	10724.740205258	Sum of GTIs [s]
date	2012-11-02T16:08:22	Date and time of file creation	l1events	17571	Number of level 1 events
revision	3	Processing version of data			

2.1.4 Events

	ccd 7
level 1 events	17571
rejected events	6360
rejected %	36%

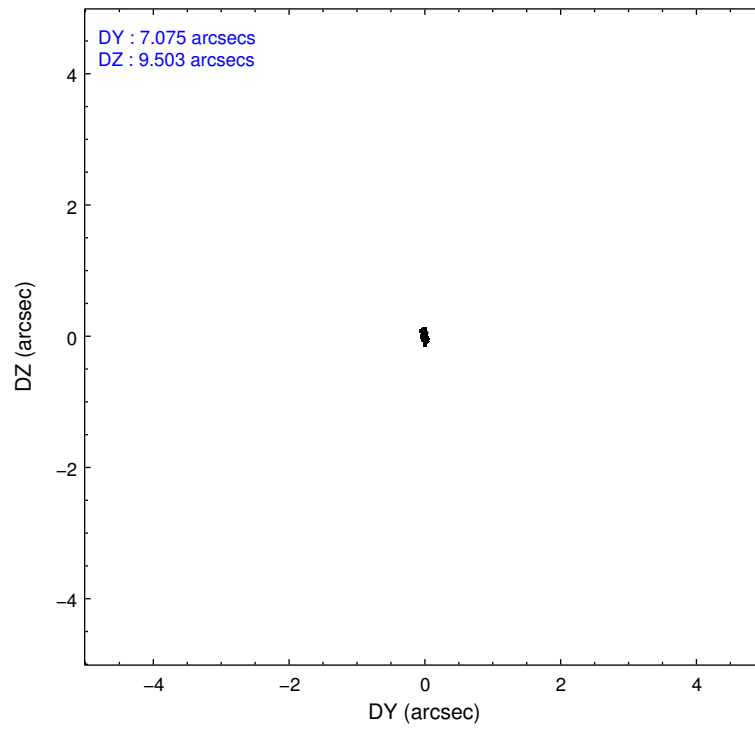
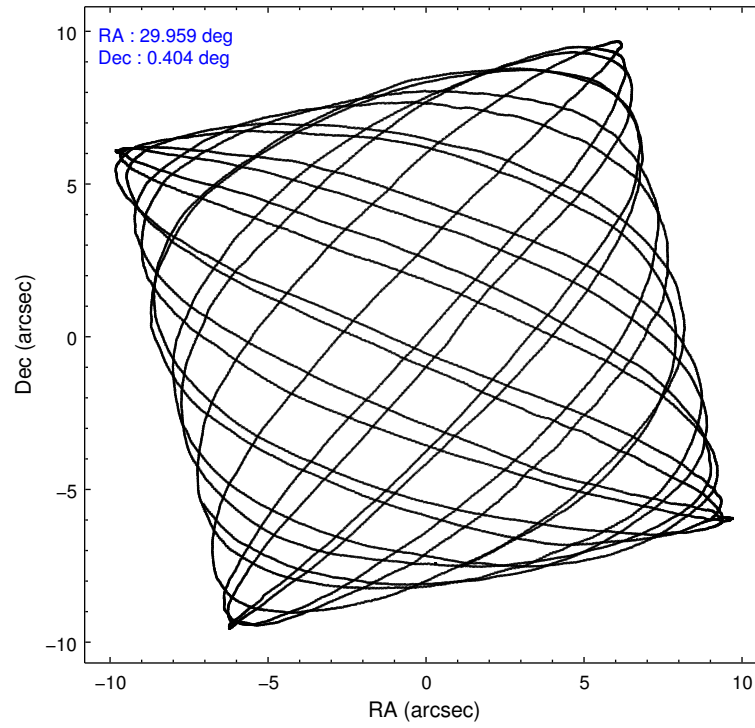
	ccd 7
grade 0 events	2997
	17%
grade 1 events	54
	0%
grade 2 events	2315
	13%
grade 3 events	1281
	7%
grade 4 events	1342
	7%
grade 5 events	1182
	6%
grade 6 events	3276
	18%
grade 7 events	5124
	29%

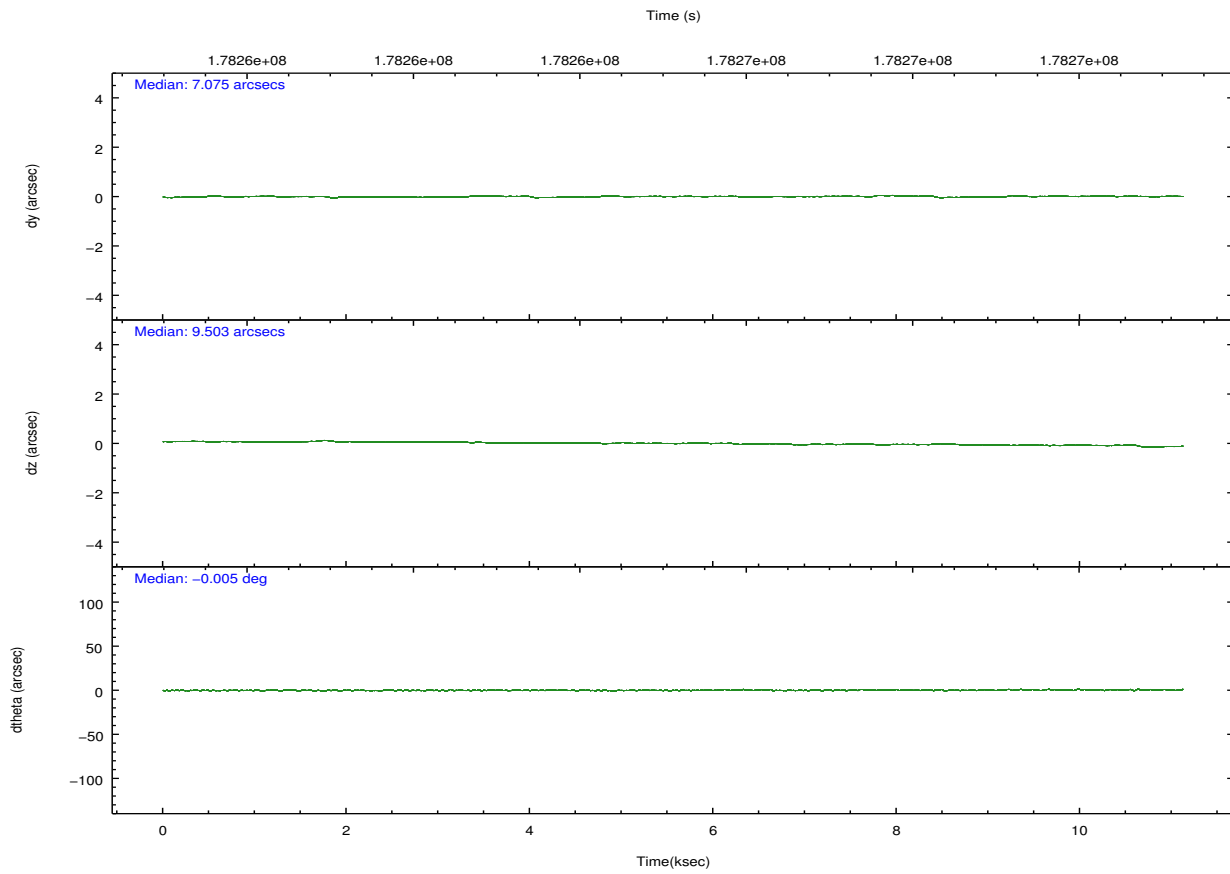
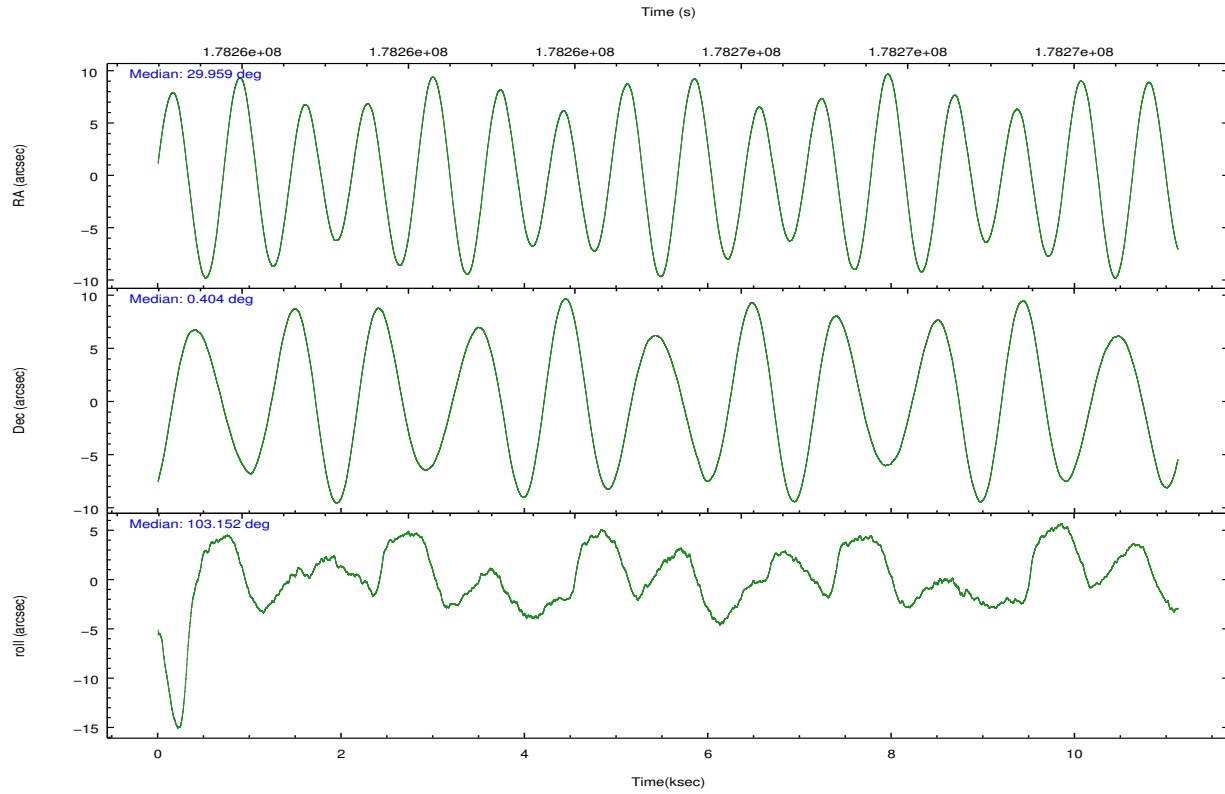
2.2 Compared Parameters

Parameter	Planned	Actual
Instrument	ACIS	ACIS
Detector	ACIS-7	ACIS-7
Grating	NONE	NONE
Data mode	VFAINT	VFAINT
Observation mode	POINTING	POINTING
[deg] Pointing RA	29.977548	29.95866427810722
[deg] Pointing Dec	0.384655	0.4042618170975628
[deg] Pointing Roll	103.000263	103.1570250324752
[mm] SIM focus pos	-0.684267	-0.6828225247311905
[mm] SIM defocus	0	0.001444936568705701
[mm] SIM translation stage pos	-190.132523	-190.1400660498719
[mm] SIM translation stage offset	0	0.00754346686406393
[s] Observation start time (MET)	178260816.184000	178259317.234
Observation start date	2003-08-26T04:52:32	2003-08-26T04:28:37
[s] Observation end time (MET)	178270681.184000	178271282.57201
Observation end date	2003-08-26T07:36:57	2003-08-26T07:48:02
Read mode	TIMED	TIMED

Parameter	Planned	Actual
Obspar format version number	7	7
Obspar file type	PREDICTED	ACTUAL
Obspar update status	NONE	UPDATED
Number of optional ACIS chips dropped	0	0
On-chip summing requested	N	N
Subarray requested	CUSTOM	1/8
Subarray start row	447	447
Subarray row count	128	128
Alternating exposures requested	N	N
[s] Primary exposure time	0.000000	0.4

2.3 Aspect



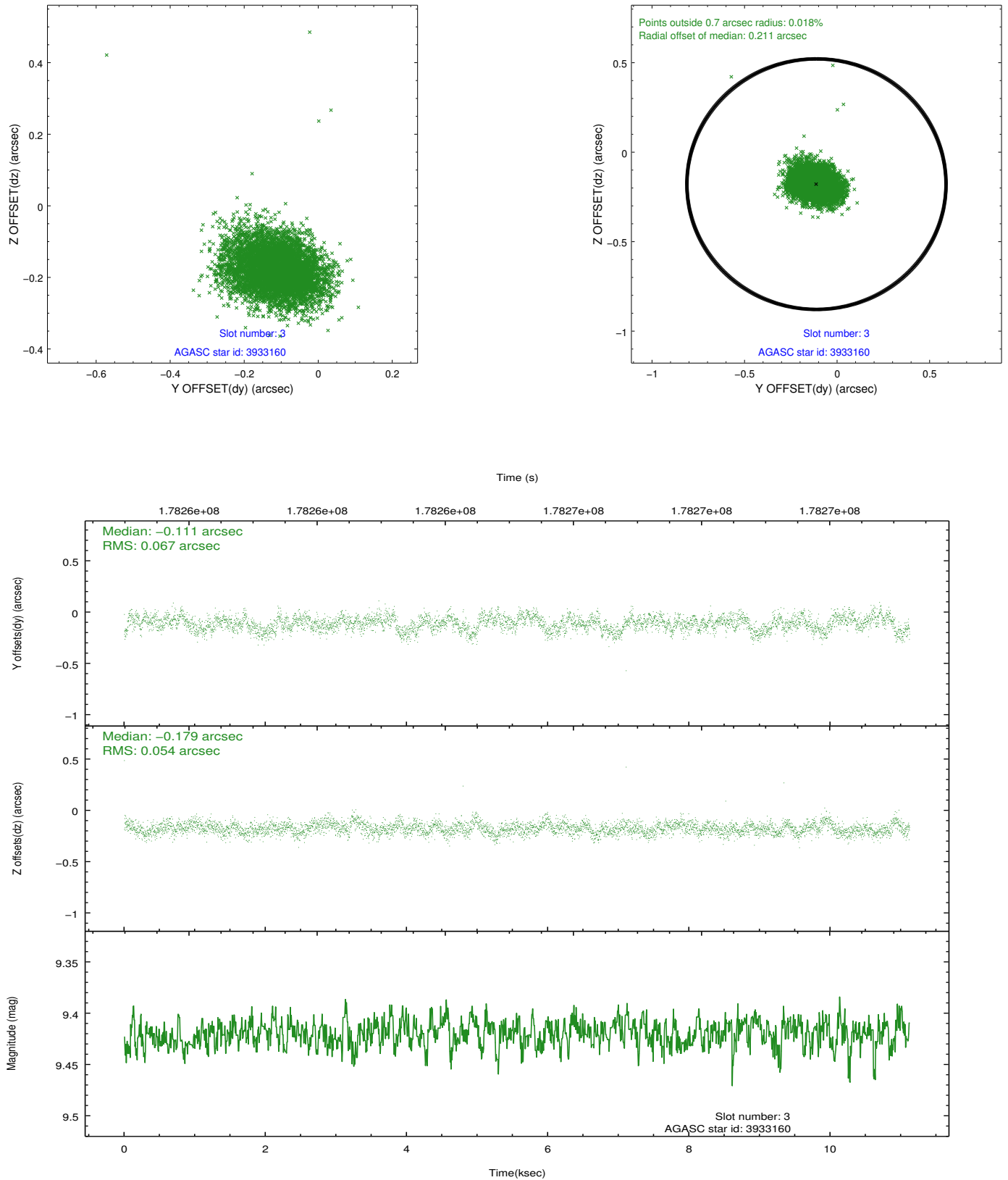


Slot Statistics

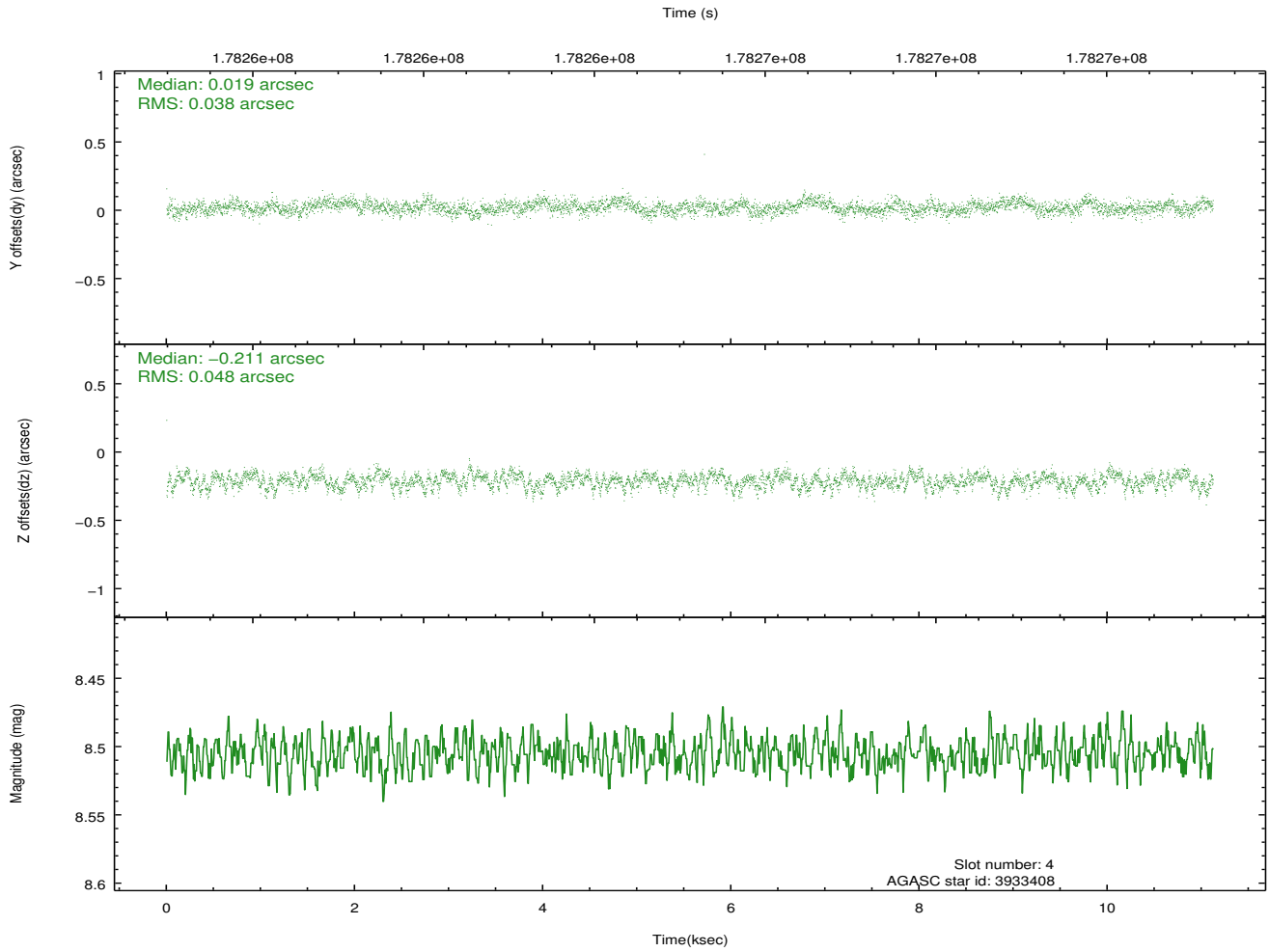
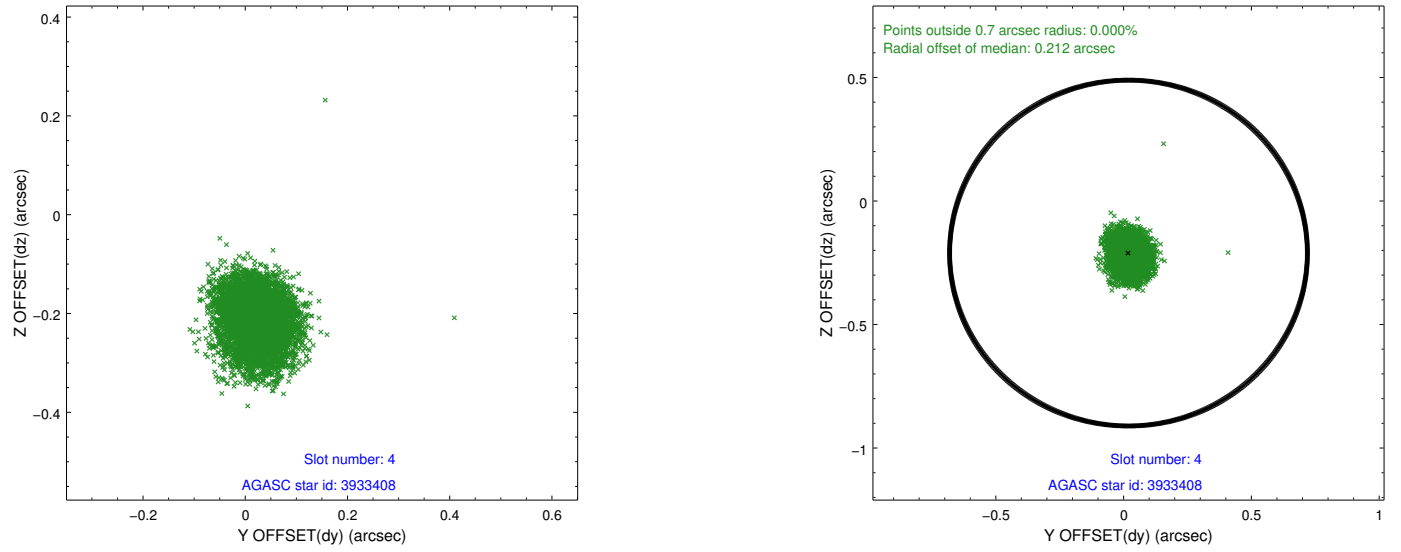
slot	status	id	mag	n_pts	med_dy	med_dz	dr1	dr2	ra	dec	mean_y	mean_z
0	FID	ACIS-S-2	7.10	2713	-0.038	-0.023	0.007	0.011	0.000000	0.000000	-759.84	-1730.76
1	FID	ACIS-S-4	7.20	2713	0.054	0.025	0.005	0.010	0.000000	0.000000	2153.30	177.32
2	FID	ACIS-S-5	7.23	2713	-0.047	0.007	0.007	0.011	0.000000	0.000000	-1812.12	171.46
3	GUIDE	3933160	9.42	5424	-0.111	-0.179	0.090	0.149	29.607018	0.758442	1611.38	997.04
4	GUIDE	3933408	8.51	5426	0.019	-0.211	0.065	0.104	29.793077	0.506917	578.89	548.17
5	GUIDE	4858816	9.89	5309	-0.128	0.330	0.118	0.195	30.267907	0.920010	1643.29	-1451.22
6	GUIDE	4858896	9.89	5419	-0.078	0.141	0.122	0.201	30.397960	0.910376	1504.53	-1900.20
7	GUIDE	614204192	8.91	5421	0.296	-0.074	0.070	0.114	29.866026	-0.253029	-2146.06	907.16

2.4 Star Slots

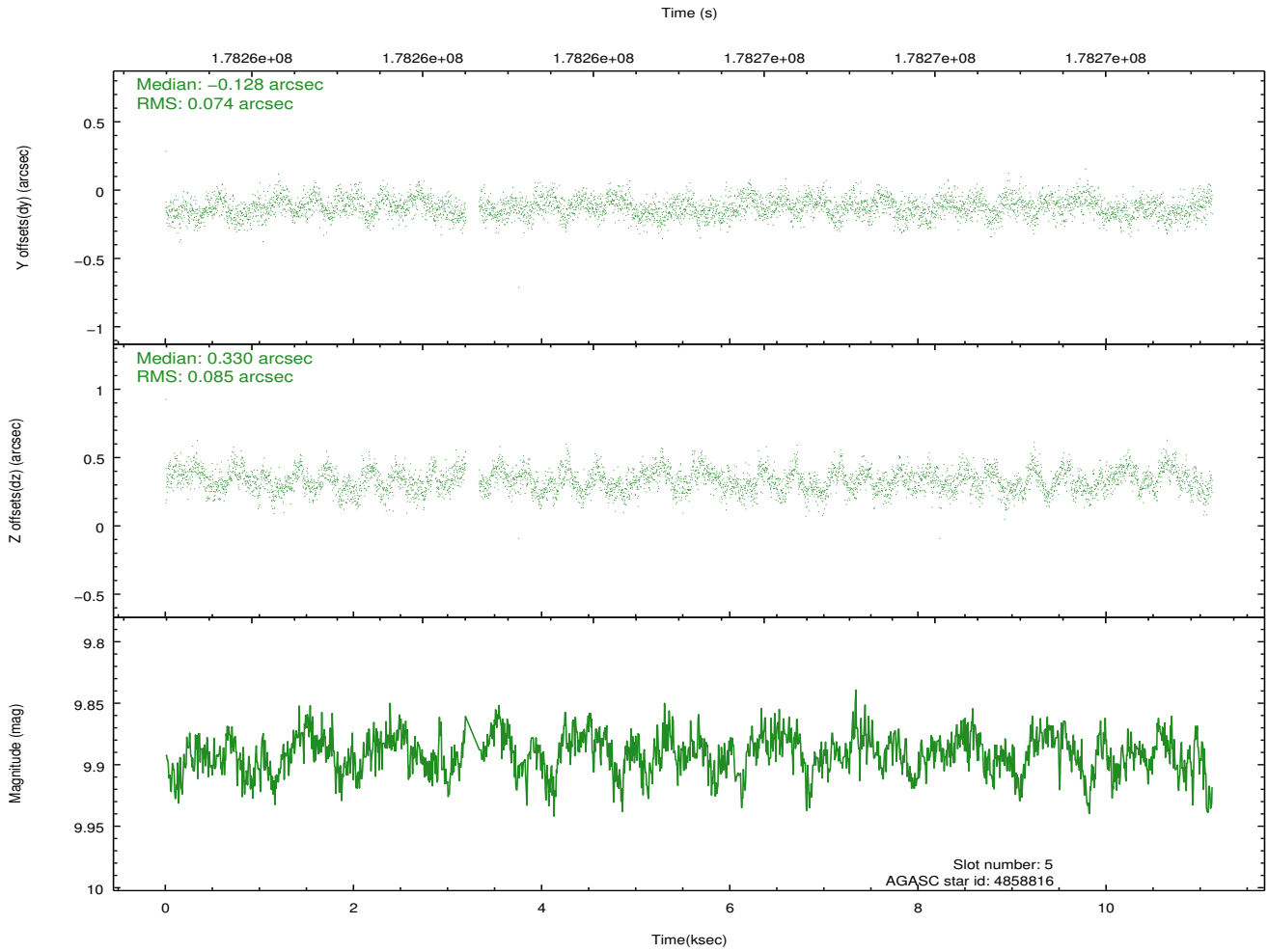
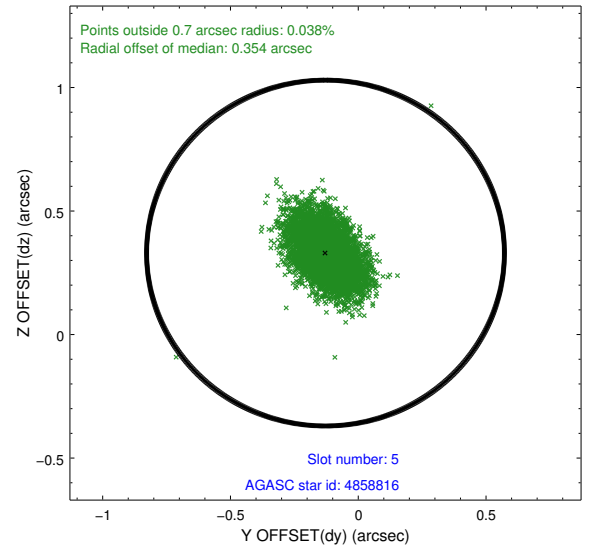
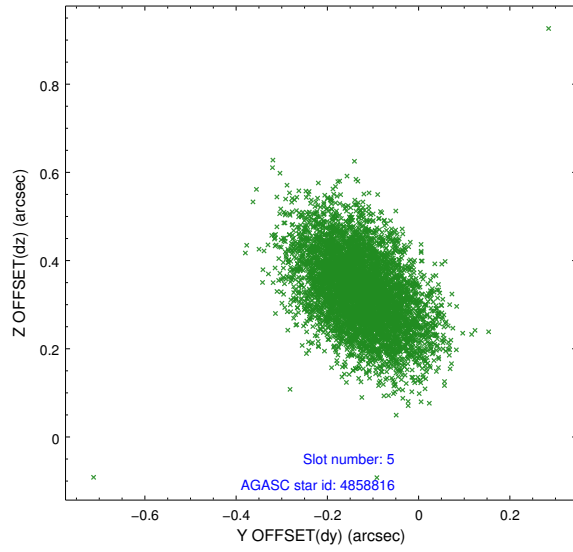
2.4.1 Slot 3



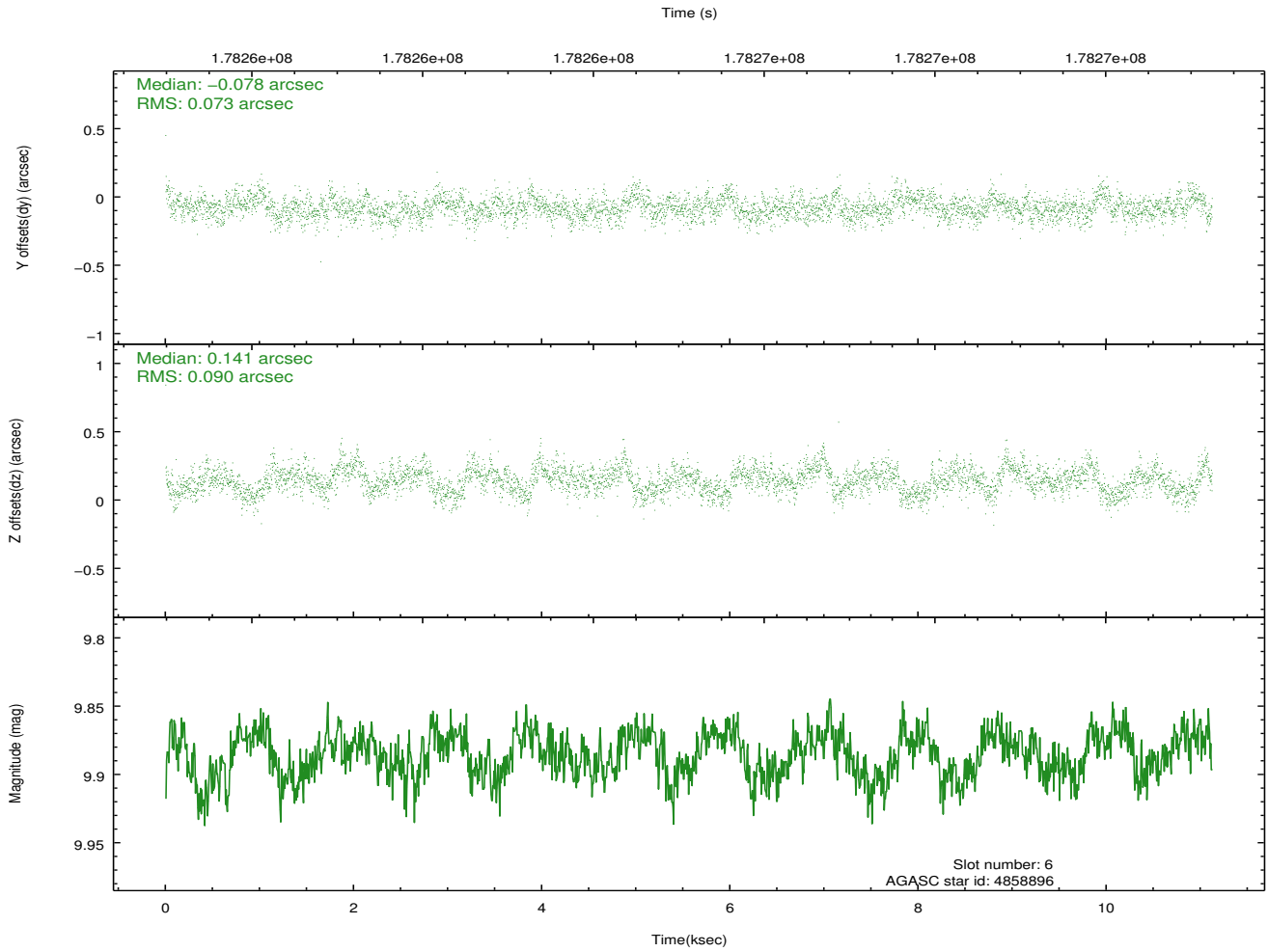
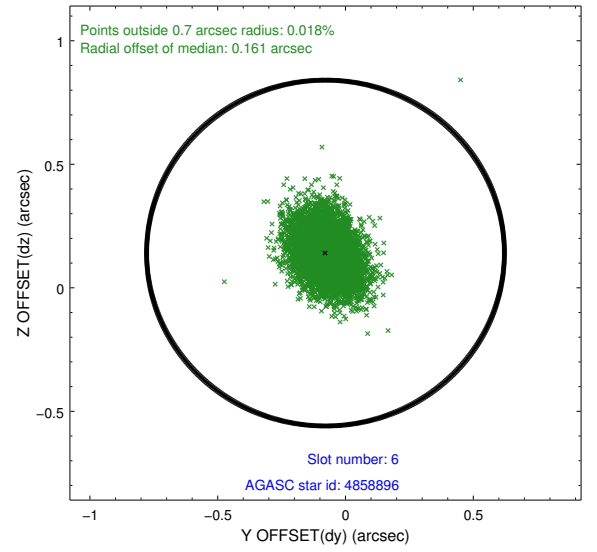
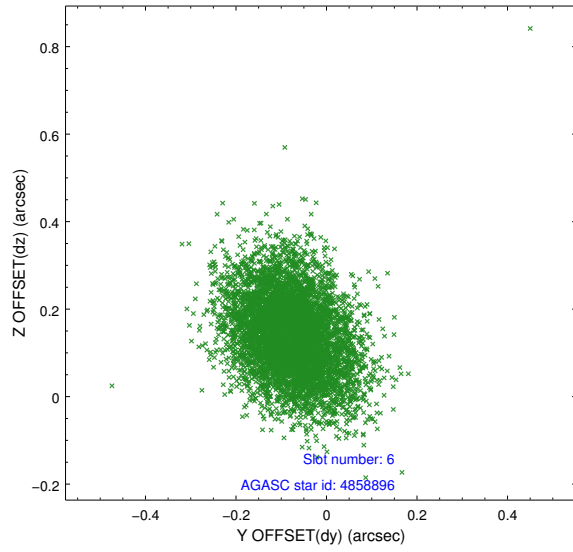
2.4.2 Slot 4



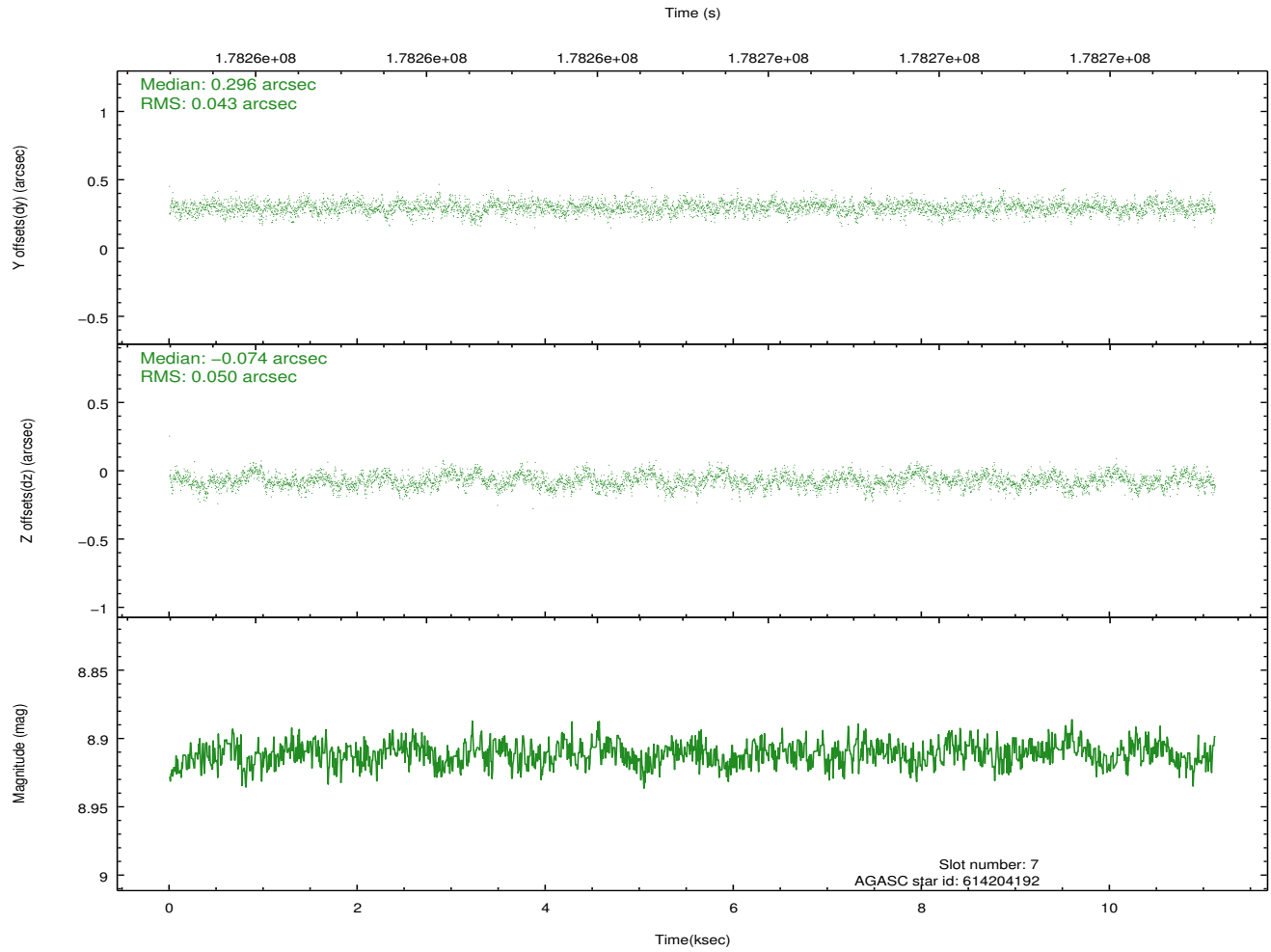
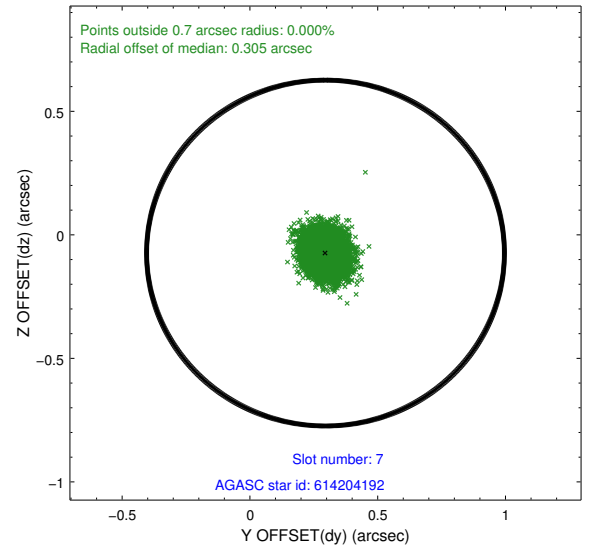
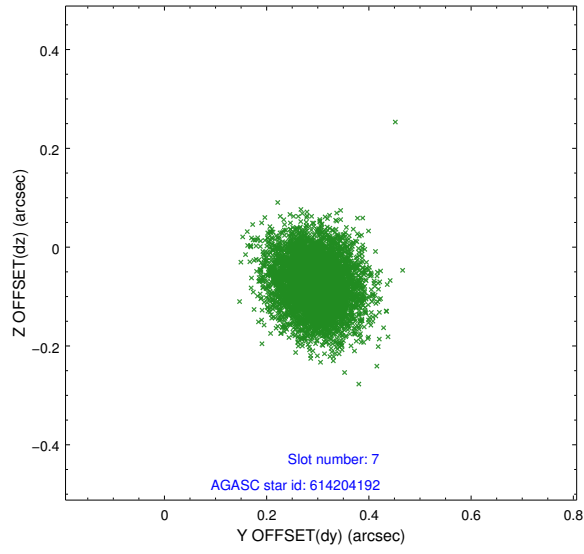
2.4.3 Slot 5



2.4.4 Slot 6

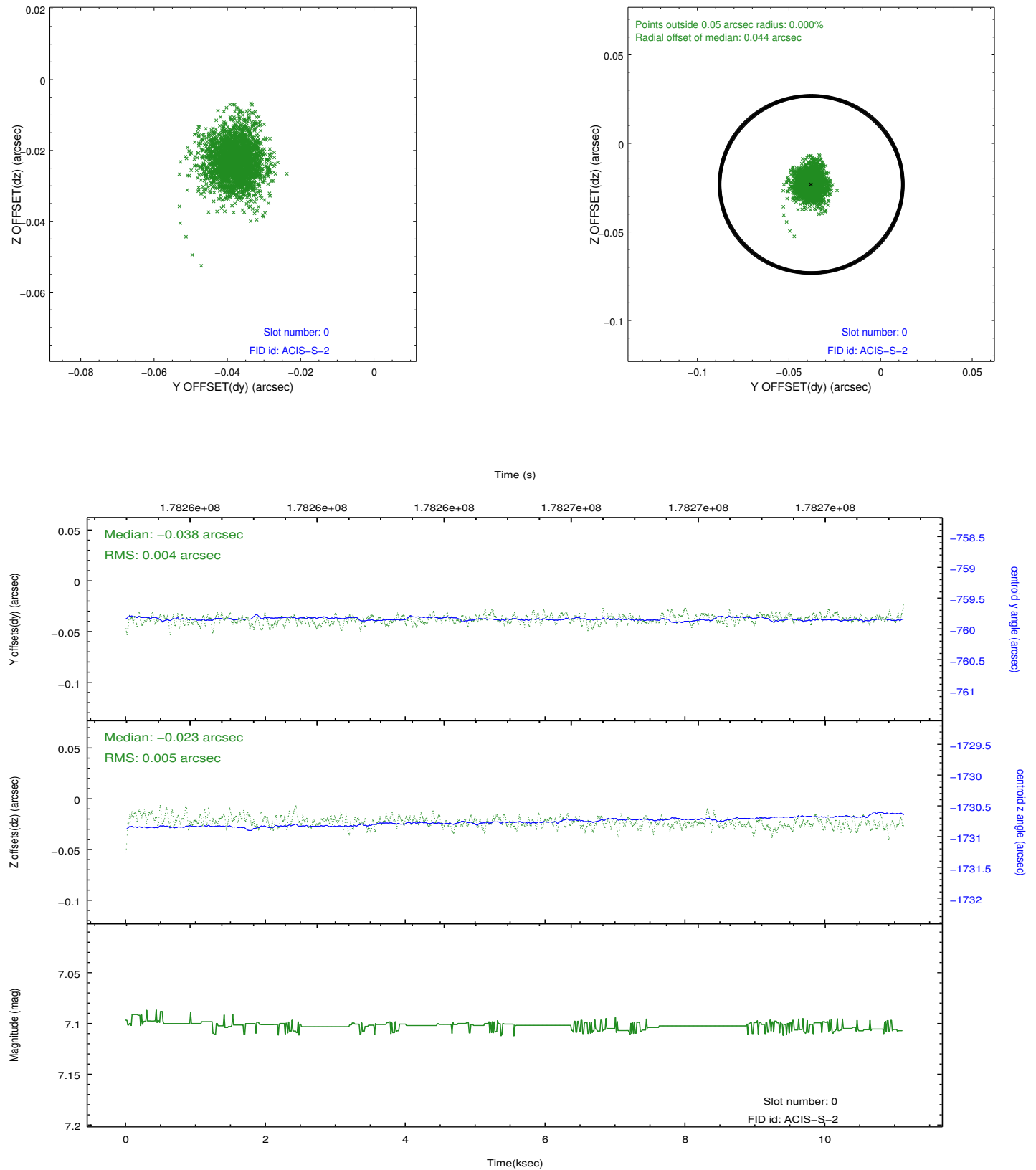


2.4.5 Slot 7

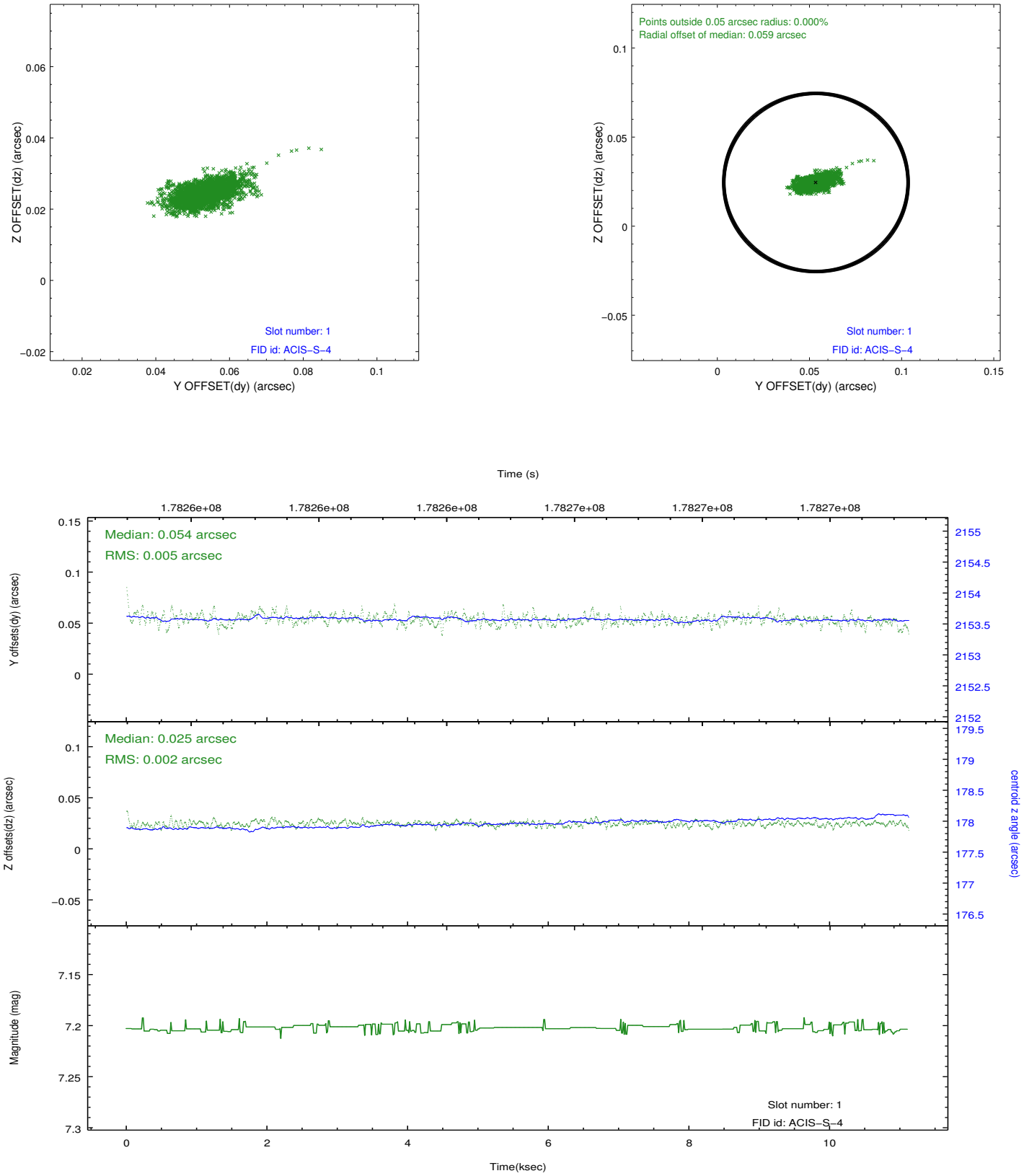


2.5 FID Slots

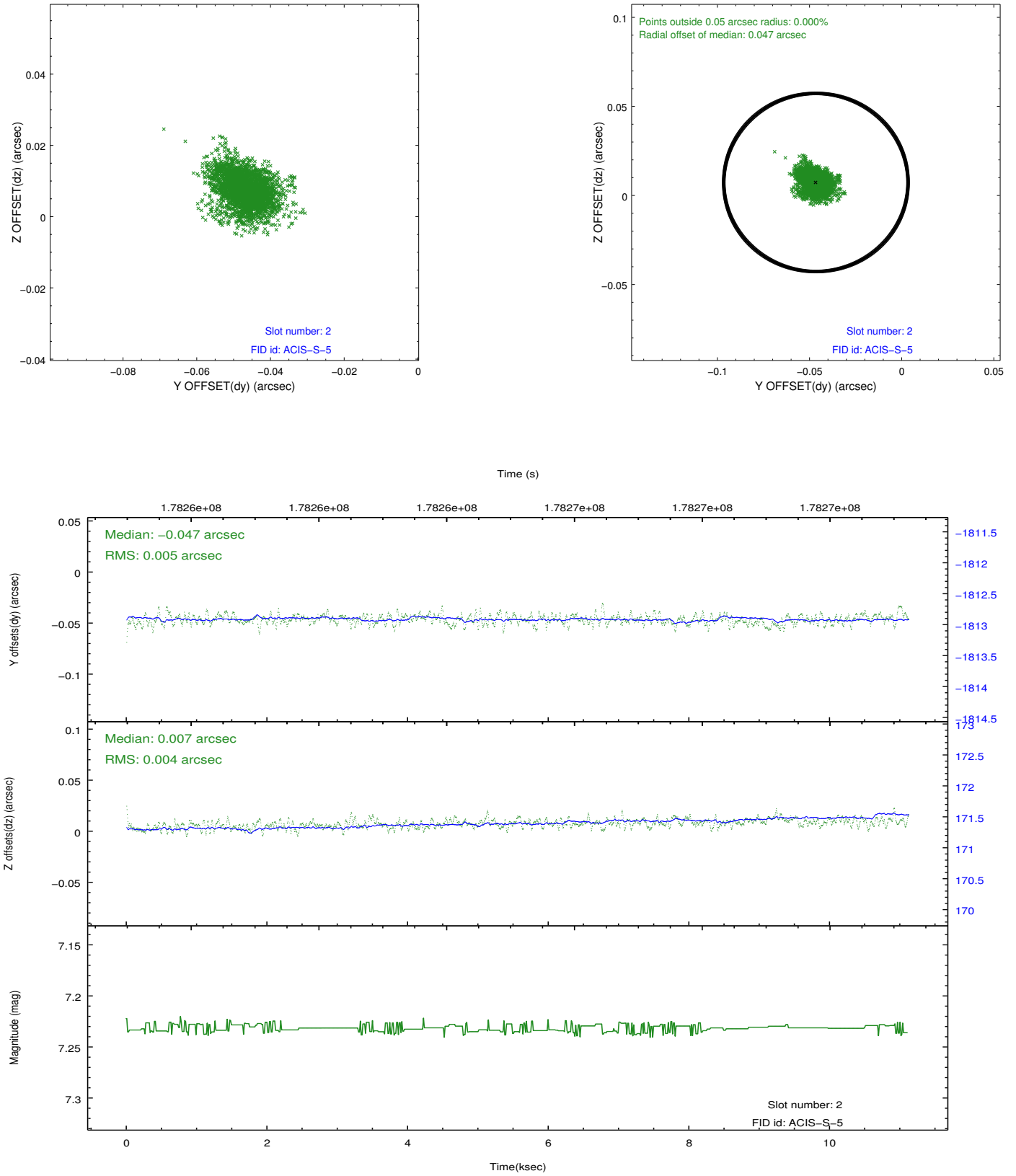
2.5.1 Slot 0



2.5.2 Slot 1



2.5.3 Slot 2



A Summary

A.1 Status

V&V Scientist	Beth Sundheim
V&V Date (YYYY-MM-DD)	2012.11.18
V&V Edition	1
V&V Disposition and Status	OK
V&V Charge Time	10.724

A.2 Comments