

# V&V Reference Report

## L2 ASCDS Version : 7.6.8

Observation 4104 - L2 Version 001  
Chandra X-Ray Center

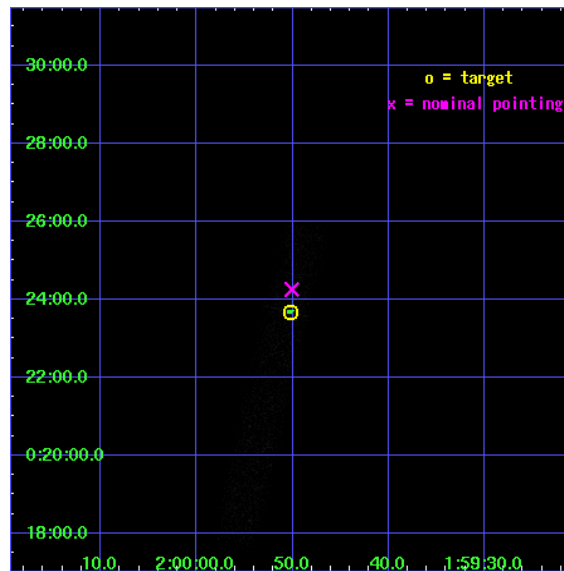
L2 Processing Date : Jul 7 2006

## Contents

<b>1</b>	<b>Front</b>	<b>2</b>
<b>2</b>	<b>OBI</b>	<b>3</b>
2.1	OBI . . . . .	3
2.1.1	Images . . . . .	3
2.1.2	Bias . . . . .	3
2.1.3	Parameters . . . . .	4
2.1.4	Events . . . . .	4
2.2	Compared Parameters . . . . .	5
2.3	Aspect . . . . .	6
2.4	Star Slots . . . . .	9
2.4.1	Slot 3 . . . . .	9
2.4.2	Slot 4 . . . . .	10
2.4.3	Slot 5 . . . . .	11
2.4.4	Slot 6 . . . . .	12
2.4.5	Slot 7 . . . . .	13
2.5	FID Slots . . . . .	14
2.5.1	Slot 0 . . . . .	14
2.5.2	Slot 1 . . . . .	15
2.5.3	Slot 2 . . . . .	16
<b>3</b>	<b>Point Sources</b>	<b>17</b>
<b>A</b>	<b>Summary</b>	<b>18</b>
A.1	Status . . . . .	18
A.2	Comments . . . . .	18

# 1 Front

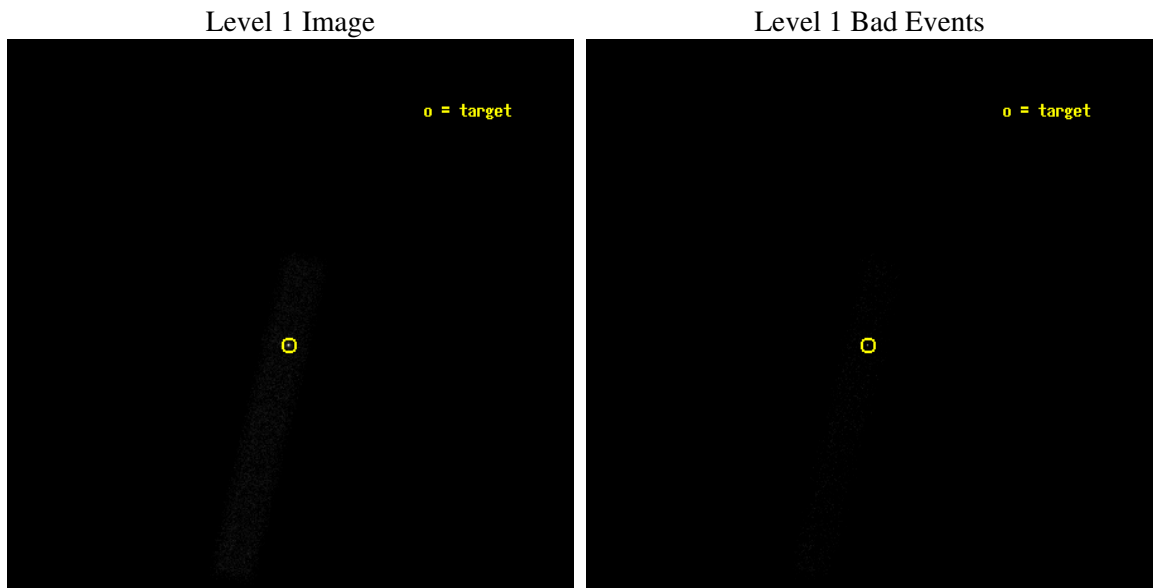
seq_num	700783
obs_id	4104
title	THE X-RAY PROPERTIES OF ULTRALUMINOUS INFRARED GALAXIES (ULIGS)
observer	Prof. Andrew Wilson
object	F01572+0009
dtcycle	0
cycle	P
ra_targ	29.959167
dec_targ	0.394611
ra_nom	29.958670527092
dec_nom	0.40423475130579
roll_nom	103.1570249816
revision	2
ontime	10724.800159812
livetime	9726.8276435806
ontime7	10724.800159812
l2events	10674



## 2 OBI

### 2.1 OBI

#### 2.1.1 Images



#### 2.1.2 Bias

Chip 7



### 2.1.3 Parameters

obi_num	0
ascdsver	7.6.8
caldbver	3.2.2
date	2006-07-07T15:13:24
revision	2

sched_exp_time	9865.000000
ontime	10725.537428826
ontime7	10725.537428826
l1events	17571

### 2.1.4 Events

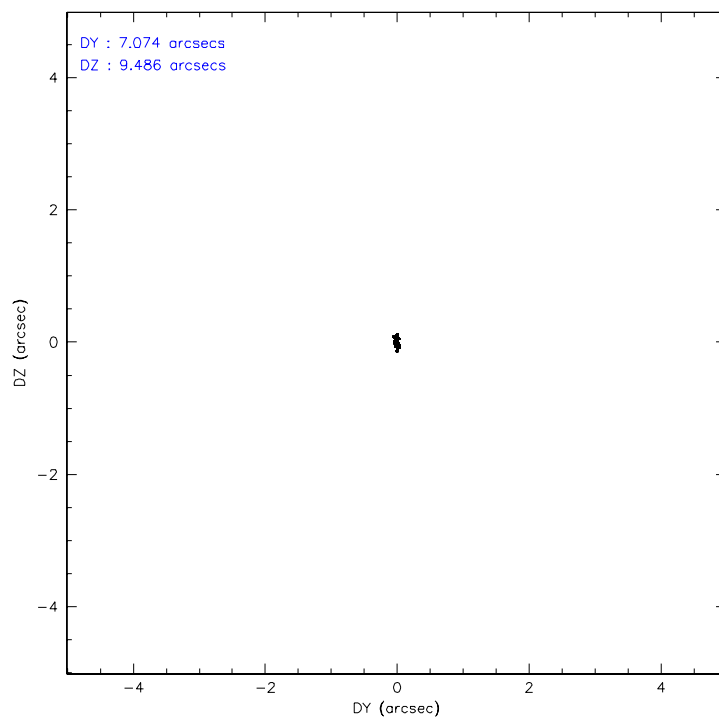
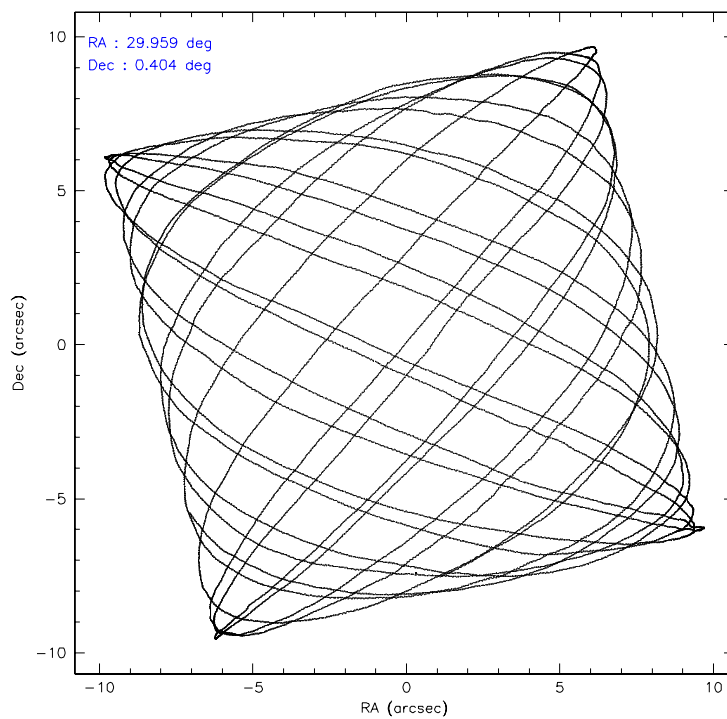
	<b>ccd 7</b>
level 1 events	17571
rejected events	6674
rejected %	37%

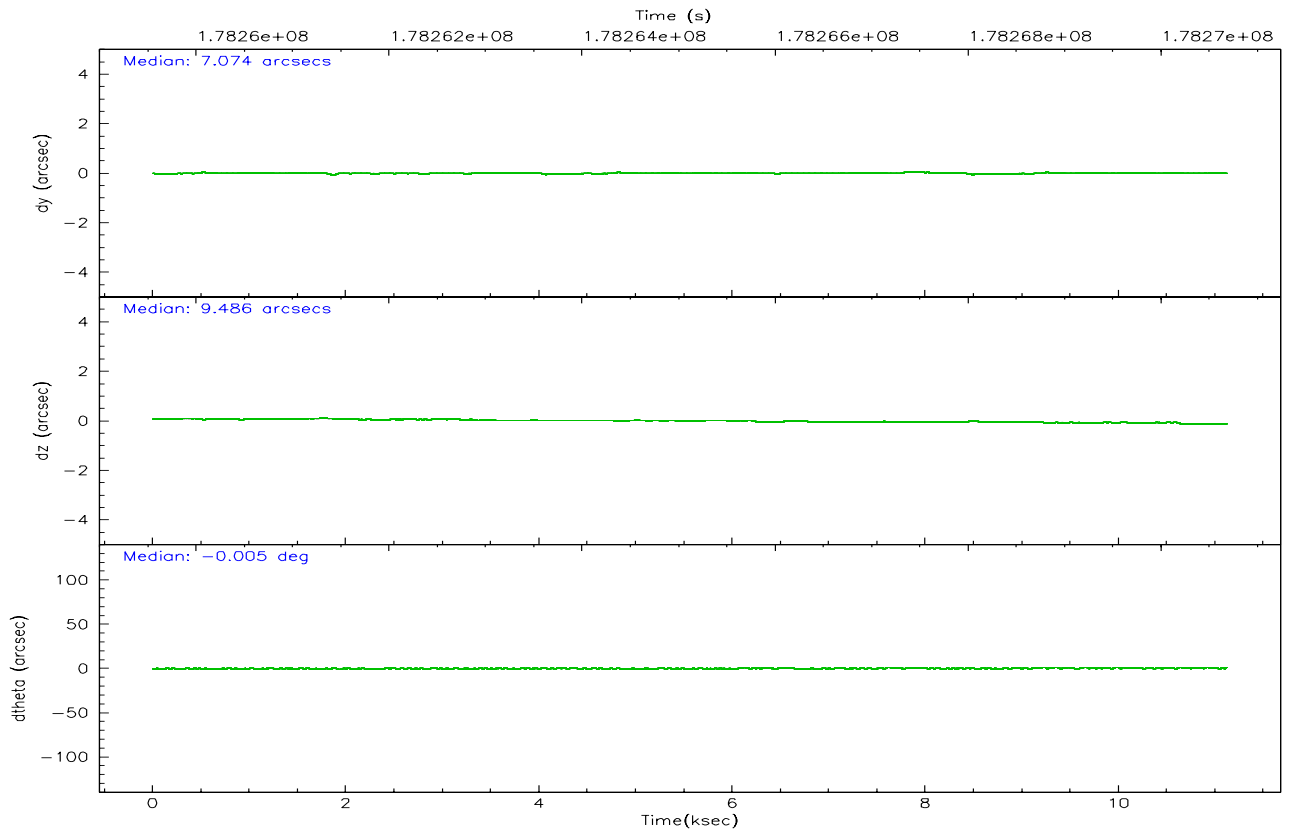
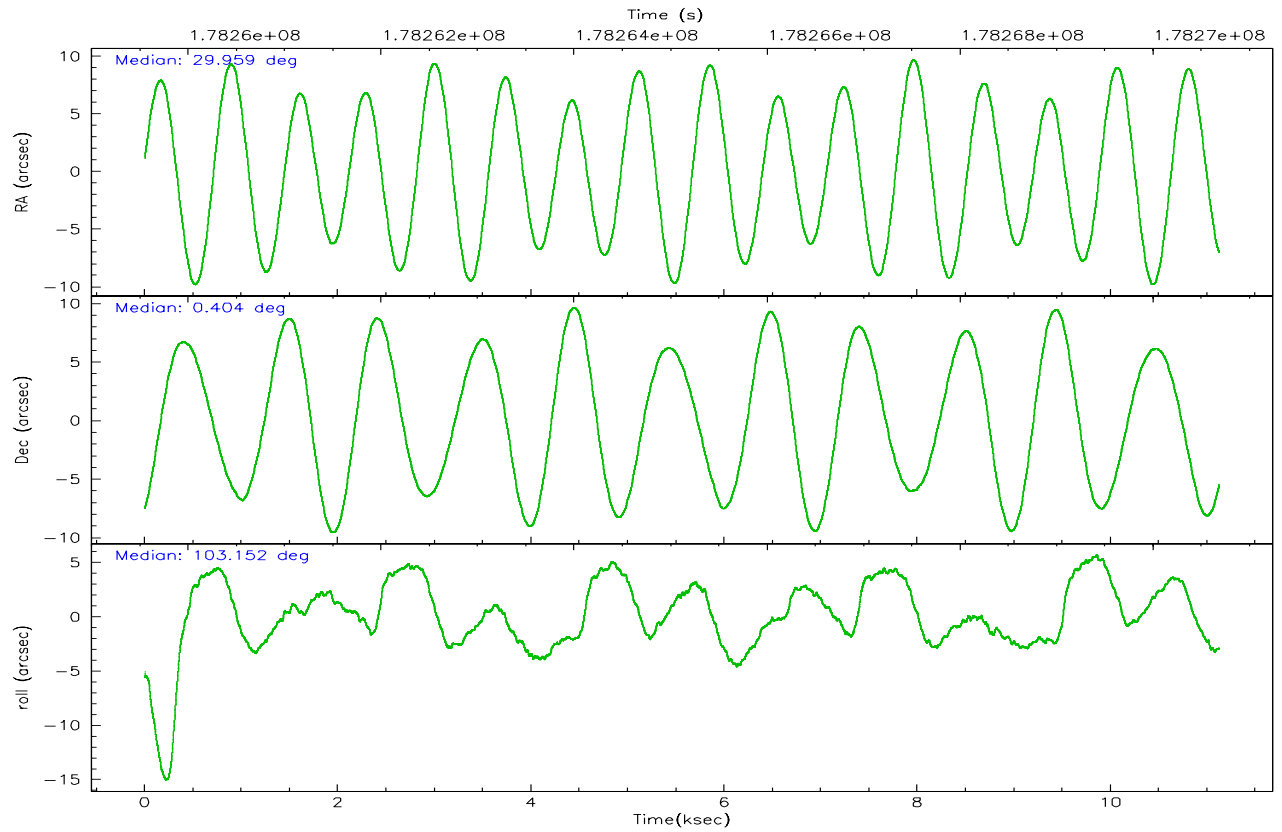
	<b>ccd 7</b>
grade 0 events	2764
	15%
grade 1 events	47
	0%
grade 2 events	2451
	13%
grade 3 events	1145
	6%
grade 4 events	1137
	6%
grade 5 events	938
	5%
grade 6 events	3400
	19%
grade 7 events	5689
	32%

## 2.2 Compared Parameters

Parameter	Planned	Actual	Parameter	Planned	Actual
Instrument	ACIS	ACIS	Obspar format version number	6	6
Detector	ACIS-7	ACIS-7	Obspar file type	PREDICTED	ACTUAL
Grating	NONE	NONE	Obspar update status	NONE	UPDATED
Data mode	VFAINT	VFAINT	On-chip summing requested	N	N
Observation mode	POINTING	POINTING	Subarray requested	CUSTOM	1/8
Pointing RA	29.977548	29.95867052709249	Subarray start row	447	447
Pointing Dec	0.384655	0.4042347513057939	Subarray row count	128	128
Pointing Roll	103.000263	103.1570249816001	Alternating exposures requested	N	N
SIM focus pos (mm)	-0.684267	-0.6828225247311905	Primary exposure time	0.000000	0.4
SIM defocus (mm)	0	0.001444936568705701			
SIM translation stage pos (mm)	-190.132523	-190.1400660498719			
SIM translation stage offset (mm)	0	0.00754346686406393			
Observation start time	178260816.184000	178259317.234			
Observation start date	2003-08-26T04:52:32	2003-08-26T04:28:37			
Observation end time	178270681.184000	178271282.57201			
Observation end date	2003-08-26T07:36:57	2003-08-26T07:48:02			
Read mode	TIMED	TIMED			

## 2.3 Aspect





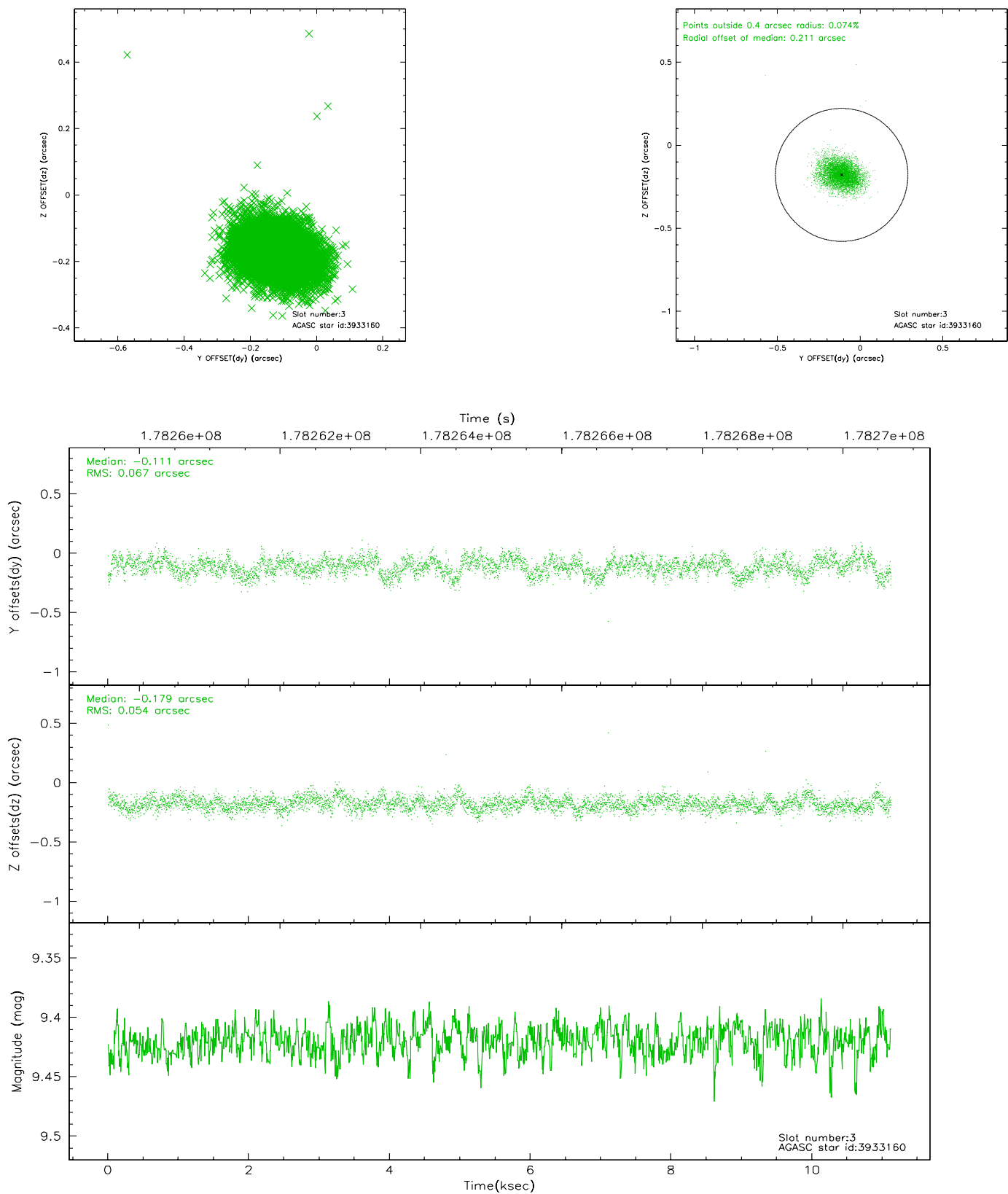
### Slot Statistics

slot	status	id	mag	n_pts	med_dy	med_dz	dr1	dr2	ra	dec	mean_y	mean_z
0	FID	ACIS-S-2	7.10	2713	-0.027	0.000	0.007	0.011	0.000000	0.000000	-759.83	-1730.72
1	FID	ACIS-S-4	7.20	2713	0.011	0.013	0.005	0.009	0.000000	0.000000	2153.25	177.33
2	FID	ACIS-S-5	7.23	2713	-0.016	-0.004	0.006	0.010	0.000000	0.000000	-1812.09	171.46
3	GUIDE	3933160	9.42	5424	-0.111	-0.179	0.090	0.149	29.607018	0.758442	1611.38	997.04
4	GUIDE	3933408	8.51	5426	0.019	-0.211	0.065	0.104	29.793077	0.506917	578.89	548.17
5	GUIDE	4858816	9.89	5309	-0.128	0.330	0.118	0.195	30.267907	0.920010	1643.29	-1451.22
6	GUIDE	4858896	9.89	5419	-0.078	0.141	0.122	0.201	30.397960	0.910376	1504.53	-1900.20
7	GUIDE	614204192	8.91	5421	0.296	-0.074	0.070	0.114	29.866026	-0.253029	-2146.06	907.16

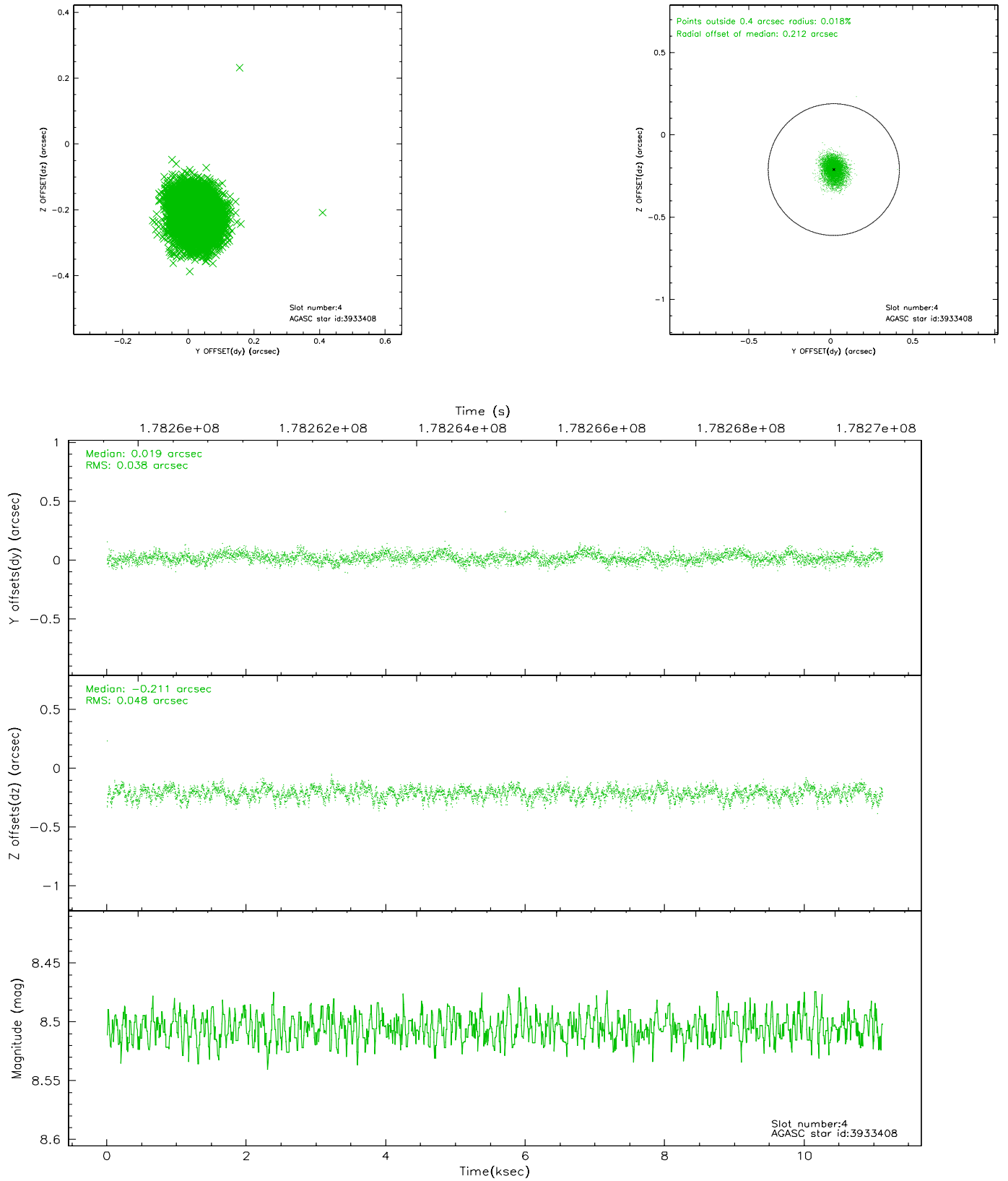


## 2.4 Star Slots

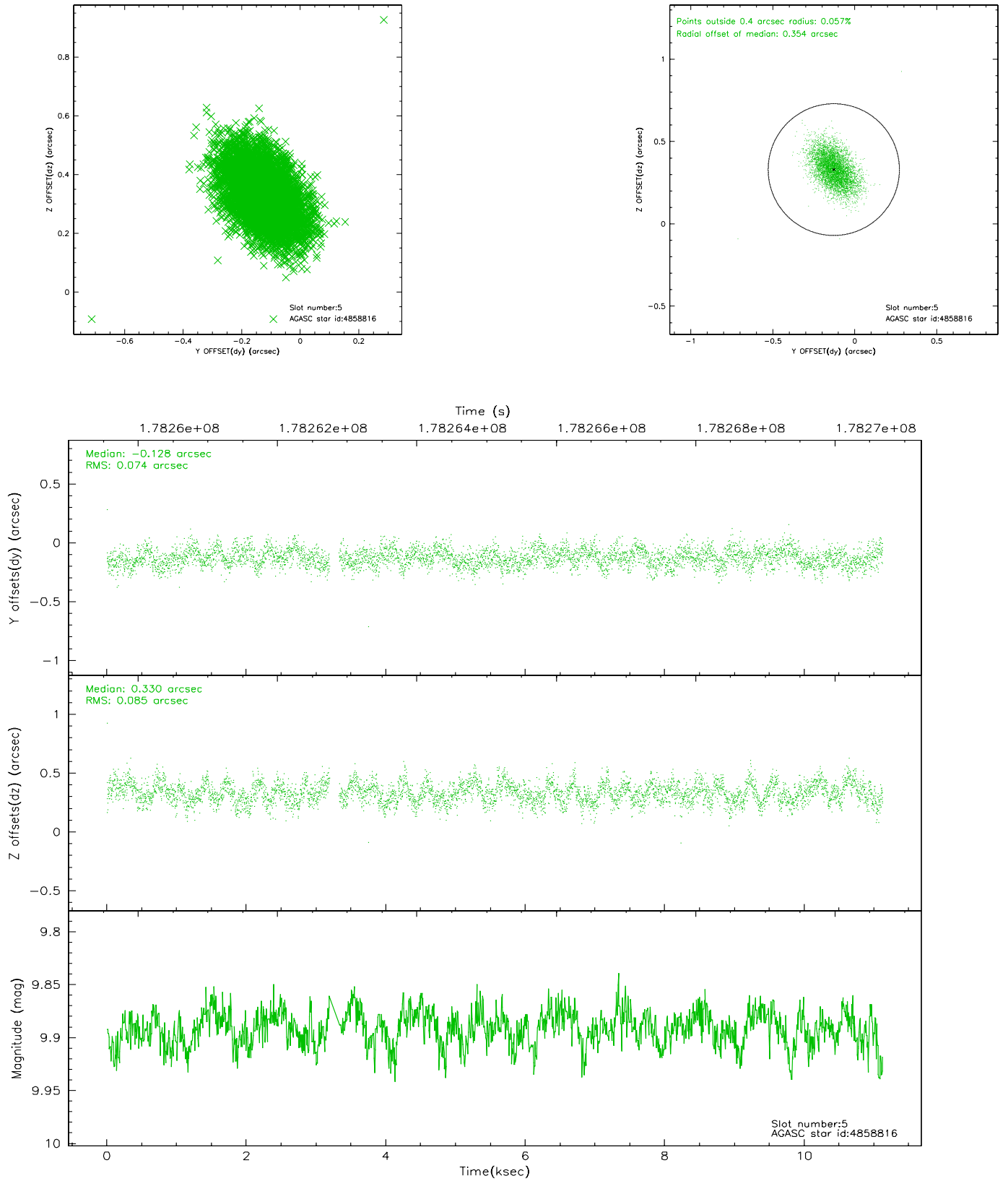
### 2.4.1 Slot 3



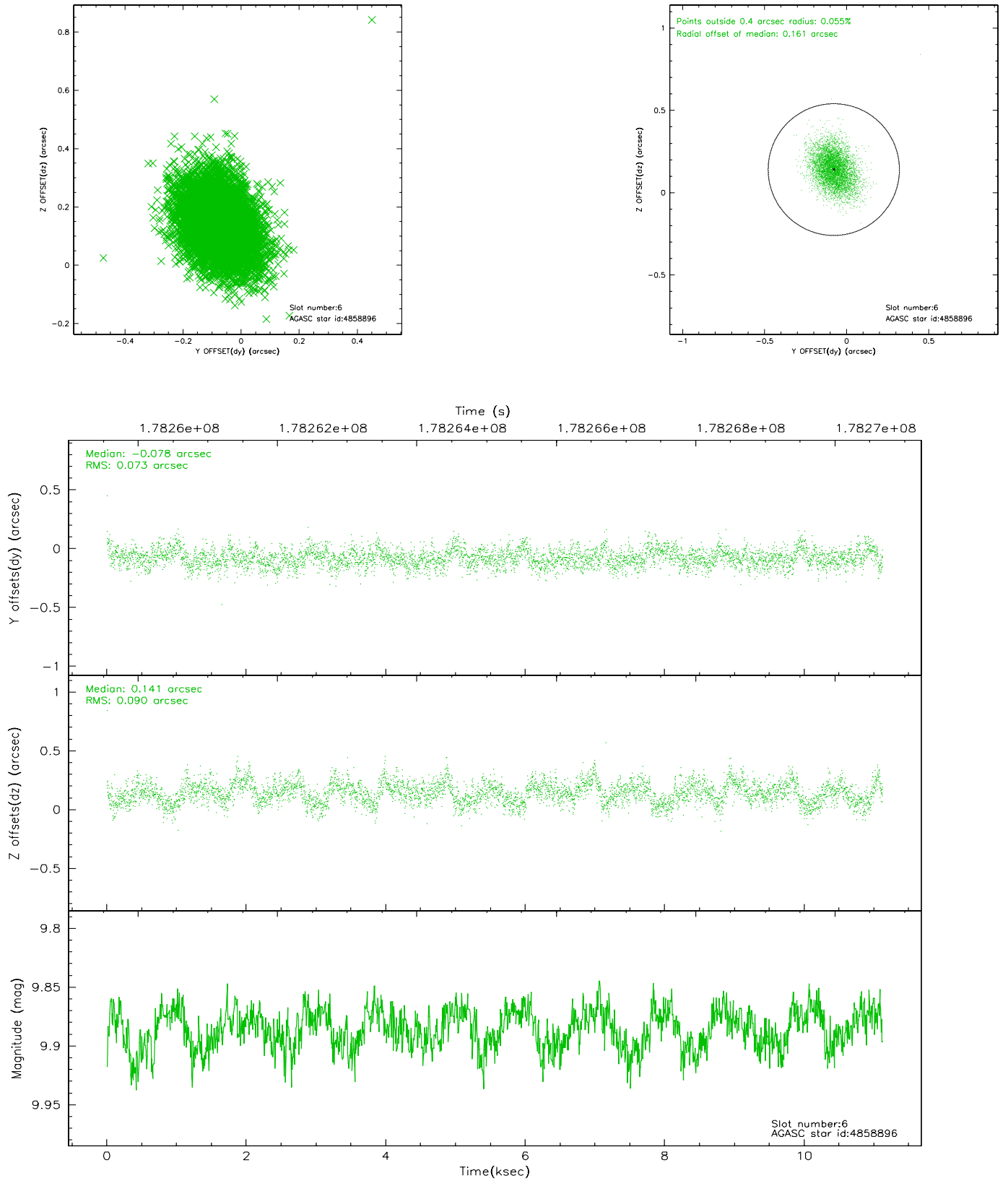
## 2.4.2 Slot 4



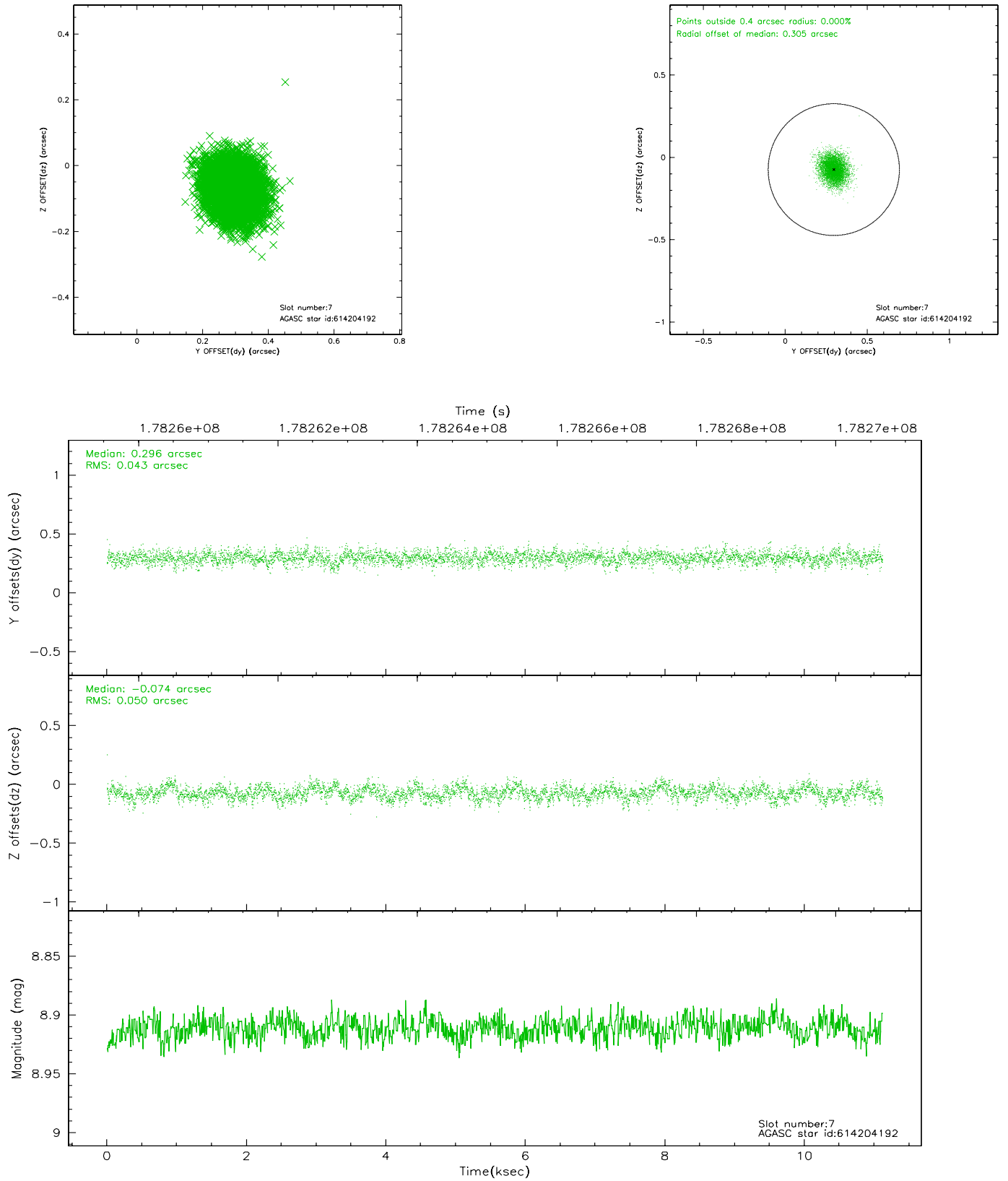
### 2.4.3 Slot 5



## 2.4.4 Slot 6

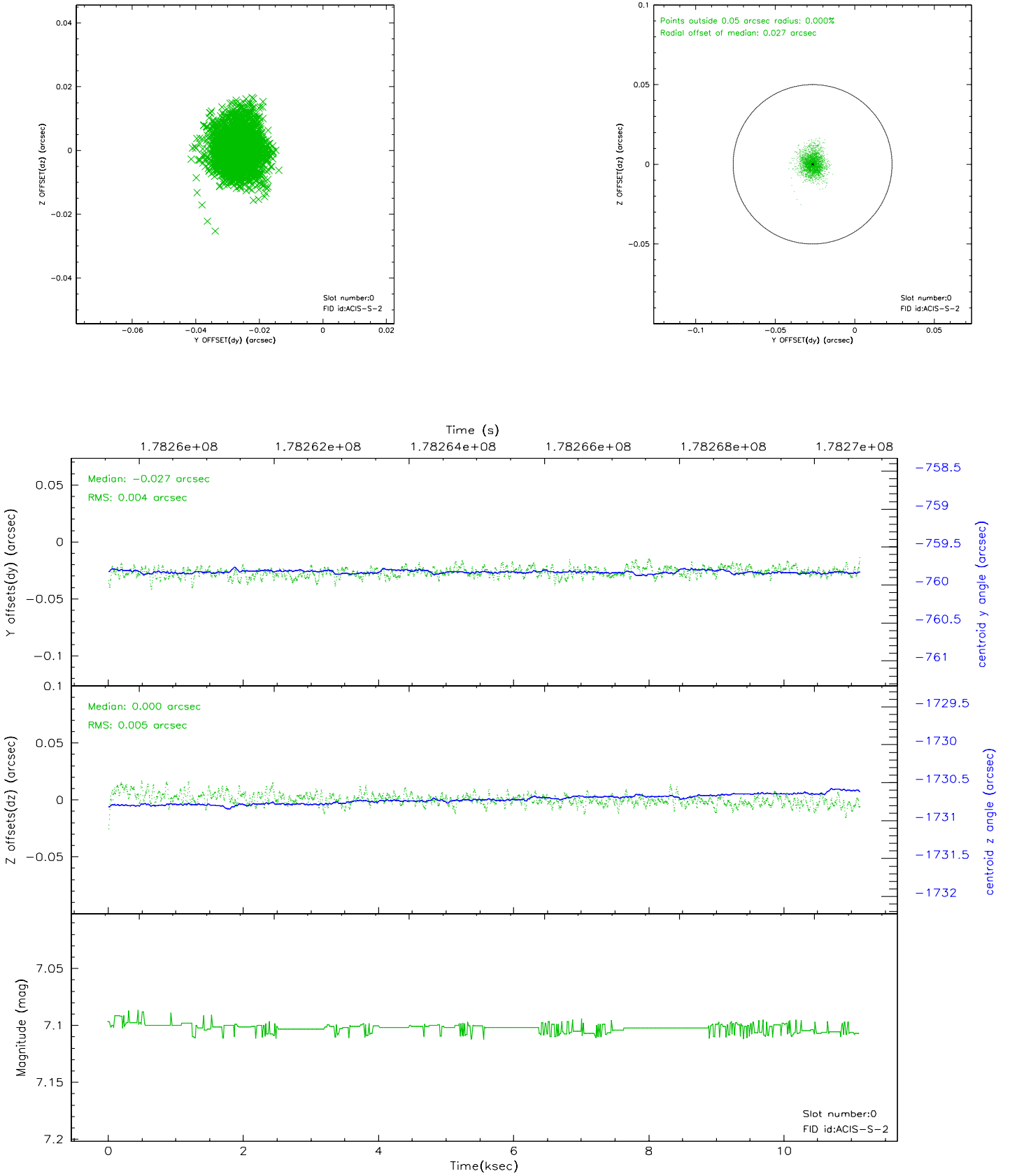


## 2.4.5 Slot 7

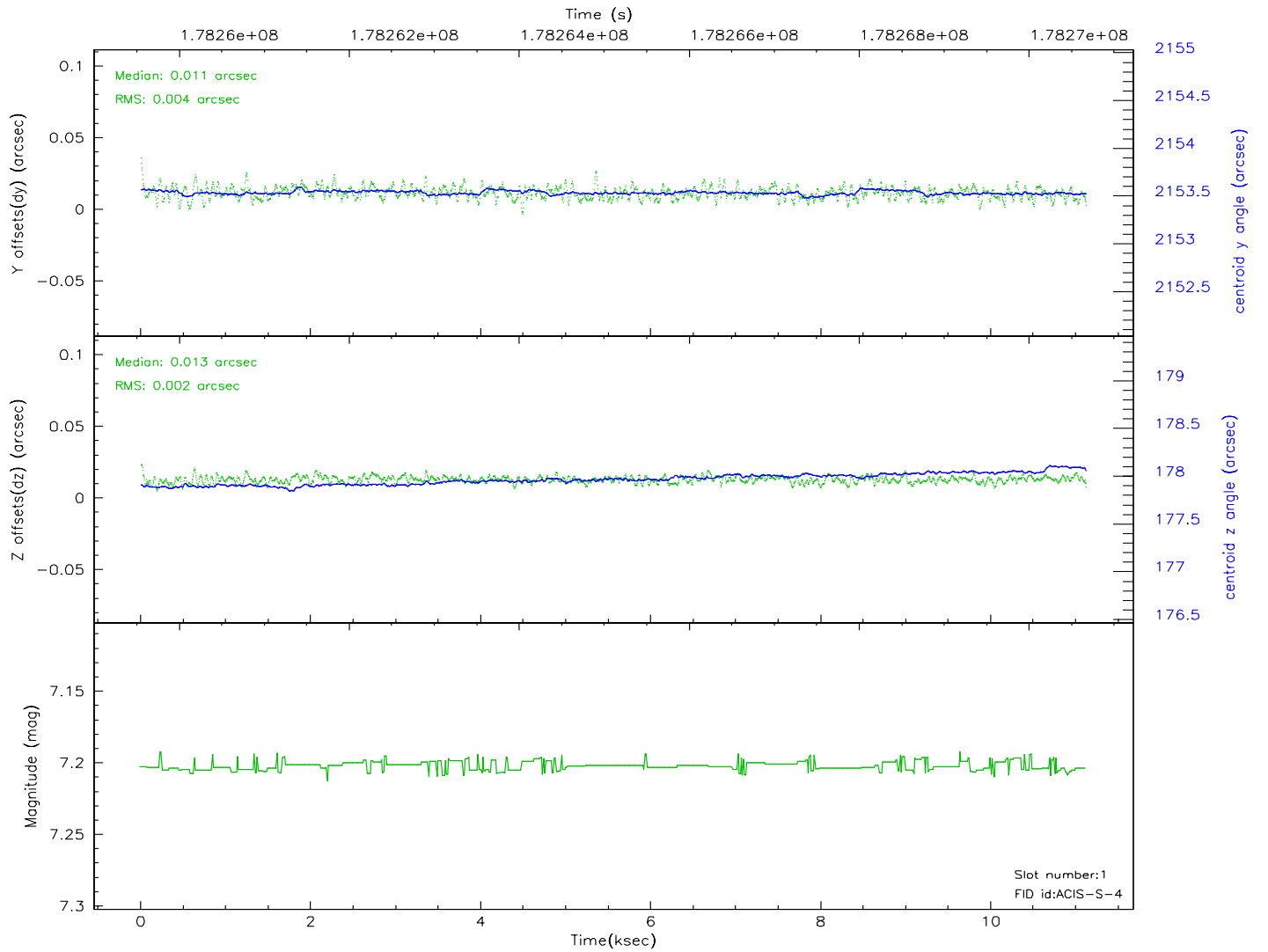
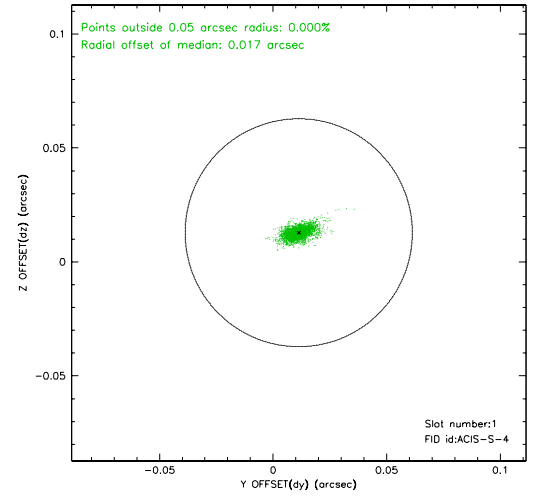
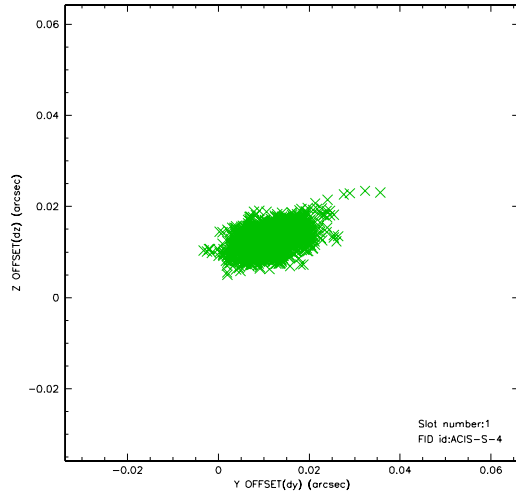


## 2.5 FID Slots

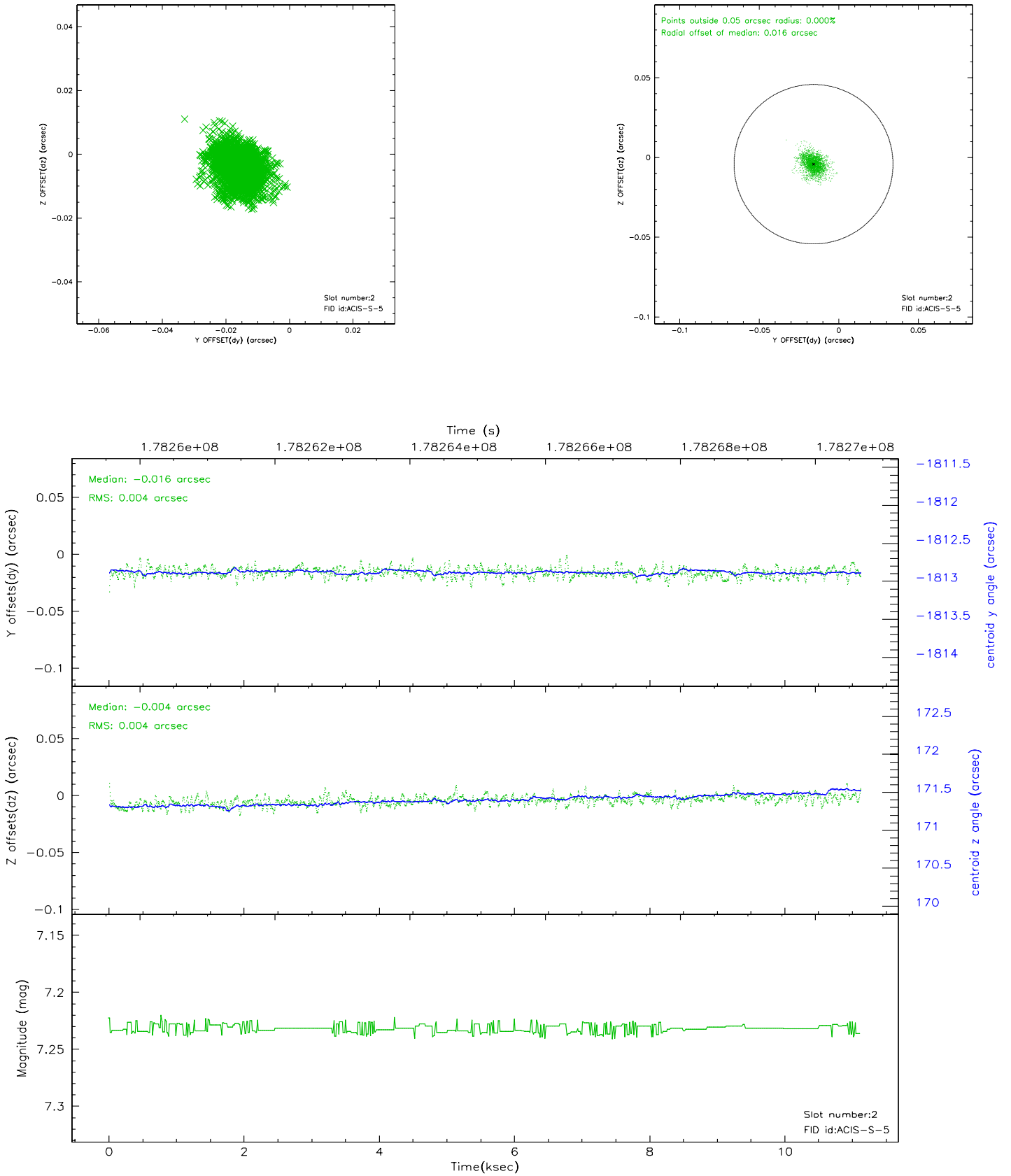
### 2.5.1 Slot 0



## 2.5.2 Slot 1



### 2.5.3 Slot 2





### 3 Point Sources

## A Summary

### A.1 Status

V&V Scientist	Beth Sundheim
V&V Date (YYYY-MM-DD)	2006.07.07
V&V Edition	1
V&V Disposition and Status	OK
V&V Charge Time	10.724

### A.2 Comments