

# V&V Reference Report

## L2 ASCDS Version : 7.6.9

Observation 4097 - L2 Version 001  
Chandra X-Ray Center

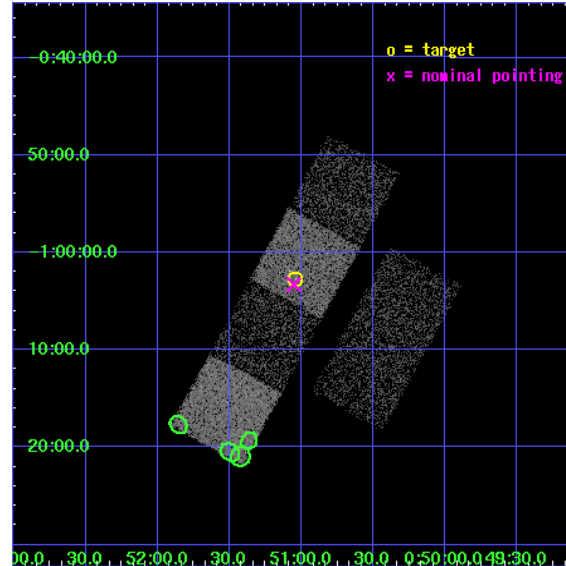
L2 Processing Date : Oct 9 2006

## Contents

<b>1</b>	<b>Front</b>	<b>2</b>
<b>2</b>	<b>OBI</b>	<b>3</b>
2.1	OBI . . . . .	3
2.1.1	Images . . . . .	3
2.1.2	Bias . . . . .	3
2.1.3	Parameters . . . . .	4
2.1.4	Events . . . . .	4
2.2	Compared Parameters . . . . .	5
2.3	Aspect . . . . .	6
2.4	Star Slots . . . . .	9
2.4.1	Slot 3 . . . . .	9
2.4.2	Slot 4 . . . . .	10
2.4.3	Slot 5 . . . . .	11
2.4.4	Slot 6 . . . . .	12
2.5	FID Slots . . . . .	13
2.5.1	Slot 0 . . . . .	13
2.5.2	Slot 1 . . . . .	14
2.5.3	Slot 2 . . . . .	15
<b>3</b>	<b>Point Sources</b>	<b>16</b>
<b>A</b>	<b>Summary</b>	<b>17</b>
A.1	Status . . . . .	17
A.2	Comments . . . . .	17

# 1 Front

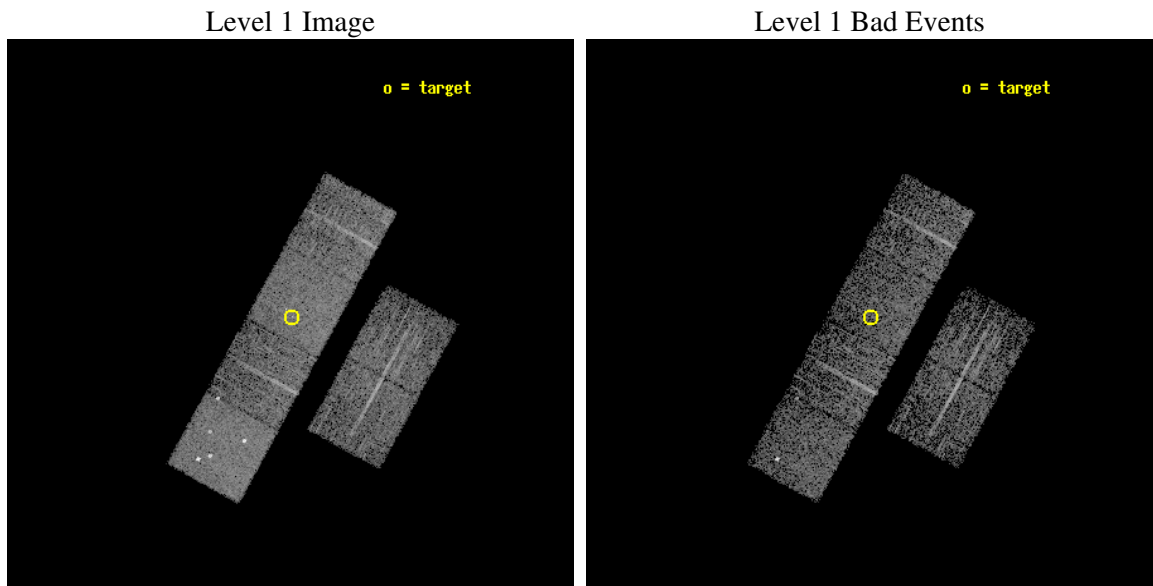
seq_num	700776
obs_id	4097
title	X-RAY CONSTRAINTS ON THE STRUCTURE OF THE BROAD EMISSION LINE REGION IN QUASARS
observer	Gordon Richards
object	SDSS J005102.42-010244.3
dtcycle	0
cycle	P
ra_targ	12.76
dec_targ	-1.045639
ra_nom	12.763167957716
dec_nom	-1.0548743753541
roll_nom	298.7395363443
revision	3
ontime	3545.5999867916
livetime	3500.7034648549
ontime2	3545.5999867916
ontime3	3545.5999867916
ontime5	3545.5999867916
ontime6	3545.5999867916
ontime7	3545.5999867916
ontime8	3545.5999867916
l2events	30782



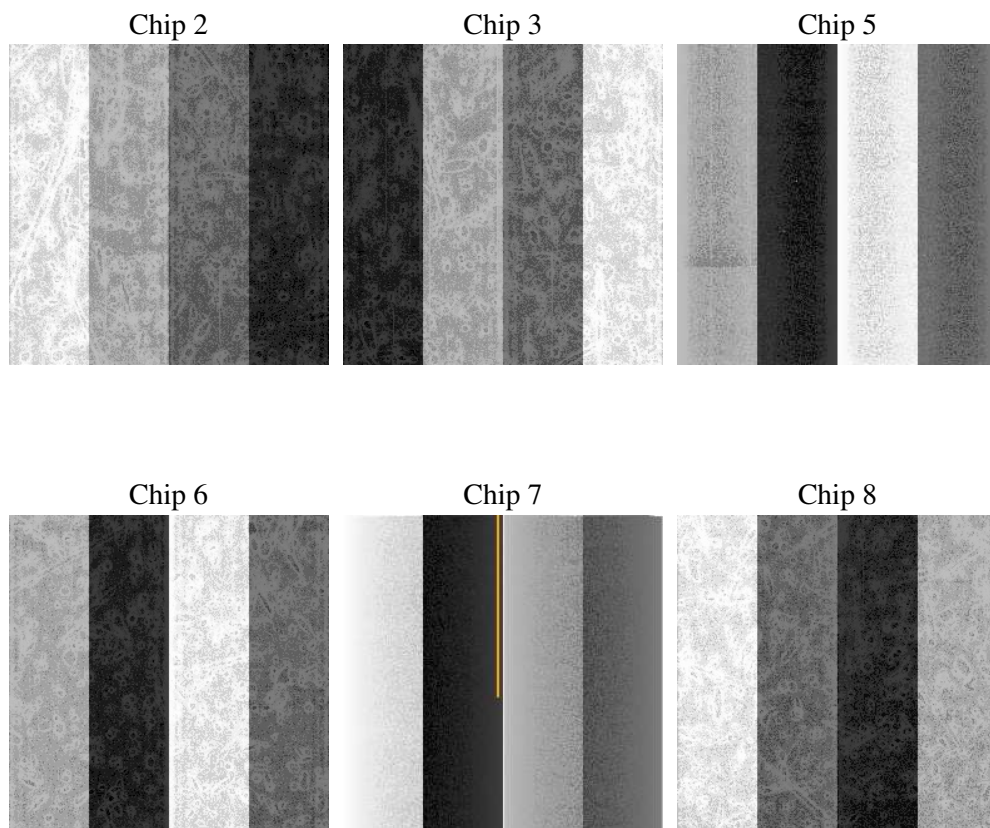
## 2 OBI

### 2.1 OBI

#### 2.1.1 Images



#### 2.1.2 Bias



### 2.1.3 Parameters

obi_num	0
ascdsver	7.6.9
caldsver	3.2.3
date	2006-10-09T18:24:44
revision	3

sched_exp_time	3614.321000
ontime	3552.1451080441
ontime2	3552.1451080441
ontime3	3552.1451080441
ontime5	3552.1451080441
ontime6	3552.1451080441
ontime7	3552.1451080441
ontime8	3552.1451080441
l1events	143772

### 2.1.4 Events

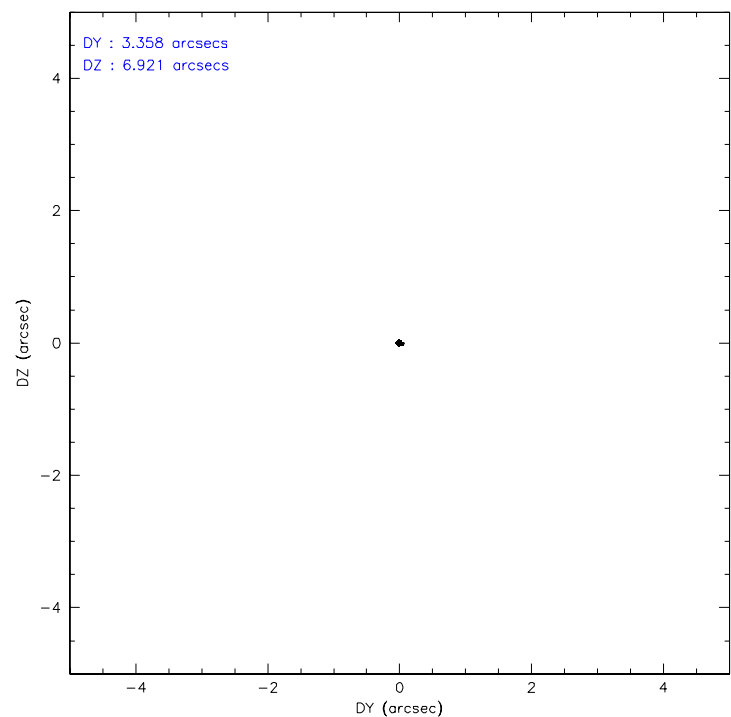
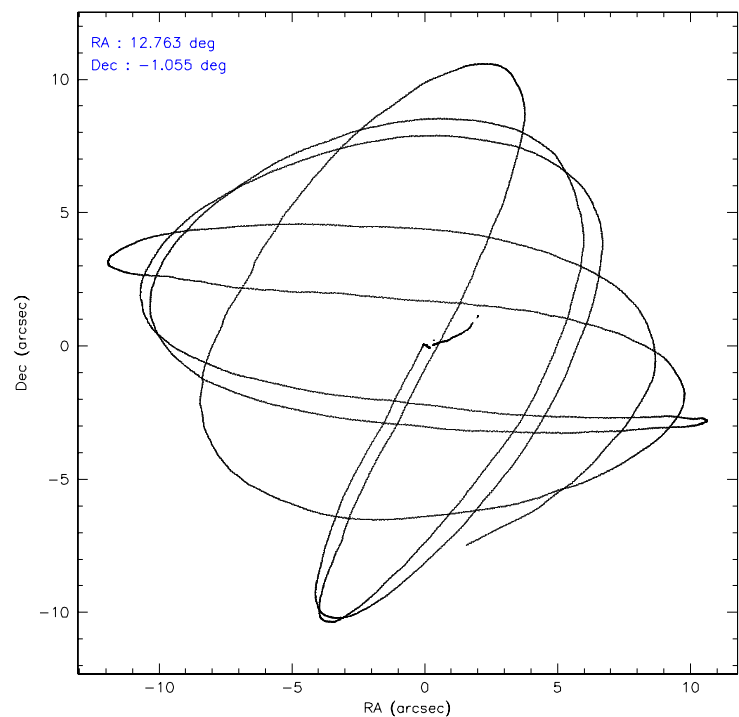
	ccd 2	ccd 3	ccd 5	ccd 6	ccd 7	ccd 8
level 1 events	19540	19267	32679	20965	27008	24313
rejected events	17211	16945	17495	18524	16710	19109
rejected %	88%	87%	53%	88%	61%	78%

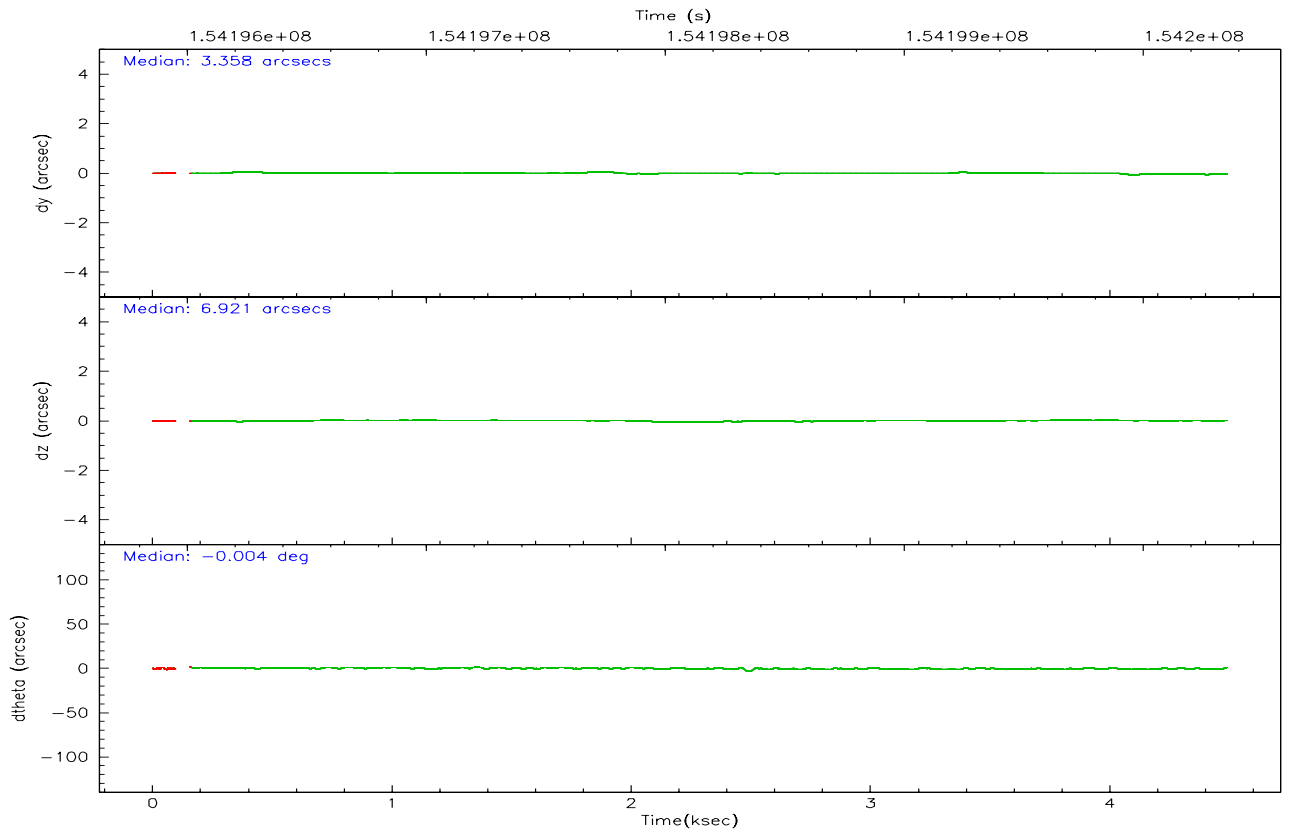
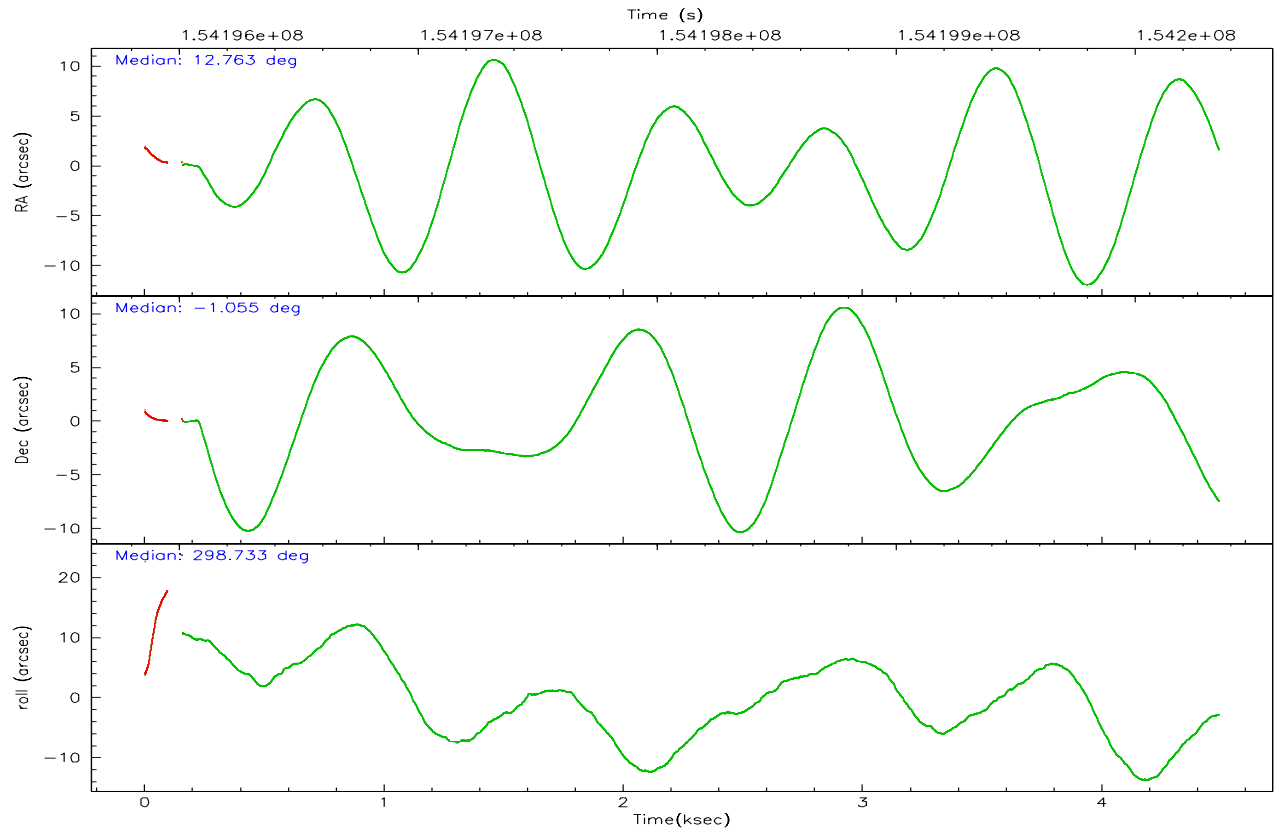
	ccd 2	ccd 3	ccd 5	ccd 6	ccd 7	ccd 8
grade 0 events	1037	1003	2469	986	711	1755
	5%	5%	7%	4%	2%	7%
grade 1 events	18	15	95	13	22	11
	0%	0%	0%	0%	0%	0%
grade 2 events	451	436	4598	478	2523	1057
	2%	2%	14%	2%	9%	4%
grade 3 events	240	235	290	233	508	582
	1%	1%	0%	1%	1%	2%
grade 4 events	239	240	287	246	507	550
	1%	1%	0%	1%	1%	2%
grade 5 events	781	878	1548	902	1716	1191
	3%	4%	4%	4%	6%	4%
grade 6 events	364	415	7565	502	6070	1269
	1%	2%	23%	2%	22%	5%
grade 7 events	16410	16045	15827	17605	14951	17898
	83%	83%	48%	83%	55%	73%

## 2.2 Compared Parameters

Parameter	Planned	Actual	Parameter	Planned	Actual
Instrument	ACIS	ACIS	Obspar format version number	6	6
Detector	ACIS-235678	ACIS-235678	Obspar file type	PREDICTED	ACTUAL
Grating	NONE	NONE	Obspar update status	NONE	UPDATED
Data mode	FAINT	FAINT	Number of optional ACIS chips dropped	0	0
Observation mode	POINTING	POINTING	On-chip summing requested	N	N
Pointing RA	12.739620	12.7631679577162	Subarray requested	NONE	NONE
Pointing Dec	-1.040989	-1.054874375354108	Alternating exposures requested	N	N
Pointing Roll	298.582494	298.7395363442966	Primary exposure time	0.000000	3.2
SIM focus pos (mm)	-0.684267	-0.6828225247311905			
SIM defocus (mm)	0	0.001444936568705701			
SIM translation stage pos (mm)	-190.132523	-190.1425803651734			
SIM translation stage offset (mm)	0	0.01005778216563158			
Observation start time	154196734.184000	154195427.60581			
Observation start date	2002-11-20T16:24:30	2002-11-20T16:03:47			
Observation end time	154200348.184000	154200662.79353			
Observation end date	2002-11-20T17:24:44	2002-11-20T17:31:02			
Read mode	TIMED	TIMED			

### 2.3 Aspect





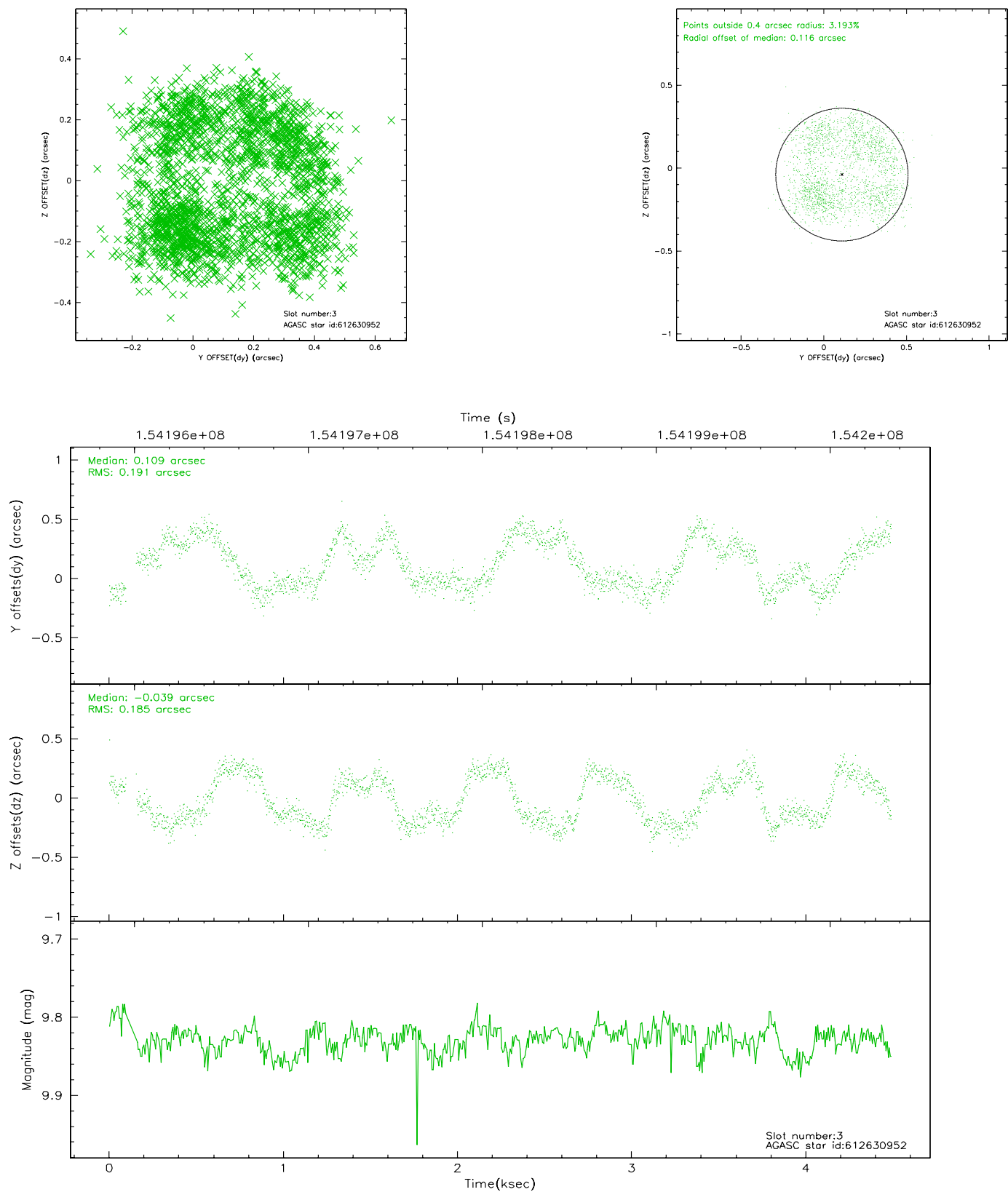
### Slot Statistics

slot	status	id	mag	n_pts	med_dy	med_dz	dr1	dr2	ra	dec	mean_y	mean_z
0	FID	ACIS-S-2	7.12	1082	-0.010	0.025	0.009	0.017	0.000000	0.000000	-756.01	-1728.01
1	FID	ACIS-S-4	7.20	1082	-0.025	-0.002	0.011	0.024	0.000000	0.000000	2156.61	179.02
2	FID	ACIS-S-5	7.24	1082	0.006	-0.015	0.009	0.015	0.000000	0.000000	-1807.05	174.25
3	GUIDE	612630952	9.83	2161	0.109	-0.039	0.295	0.383	12.847765	-1.386514	1279.58	-252.44
4	GUIDE	612631088	9.85	2151	0.143	-0.118	0.139	0.236	12.983644	-1.347445	1390.69	244.05
5	GUIDE	612633000	9.81	2162	-0.193	0.024	0.169	0.259	12.721176	-0.342267	-2239.35	1145.79
6	GUIDE	612633056	9.42	2160	-0.081	0.120	0.135	0.223	13.071720	-0.364507	-1566.89	2216.26
7	MONITOR		0.00	0	0.000	0.000	0.000	0.000	0.000000	0.000000	0.00	0.00

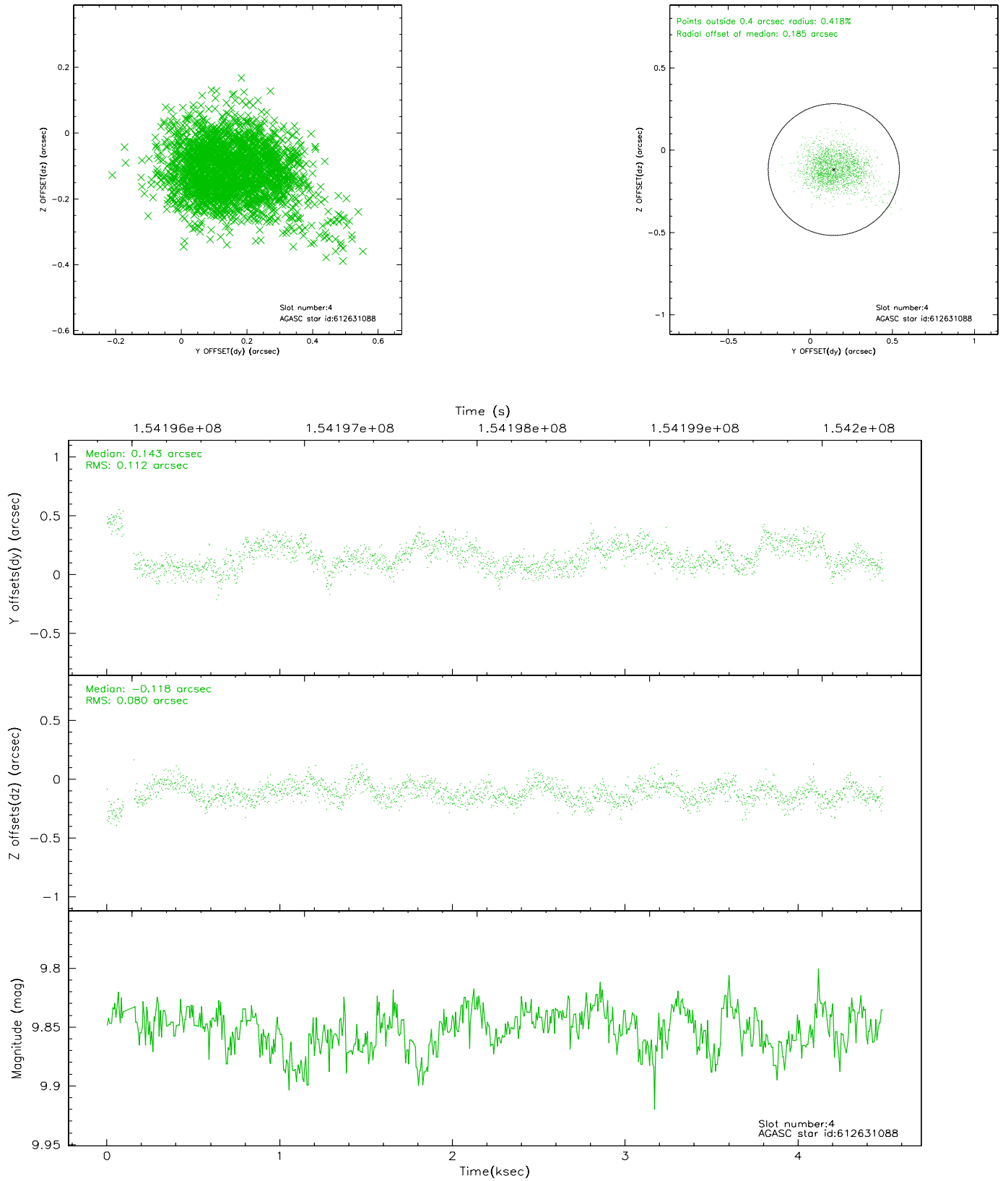


## 2.4 Star Slots

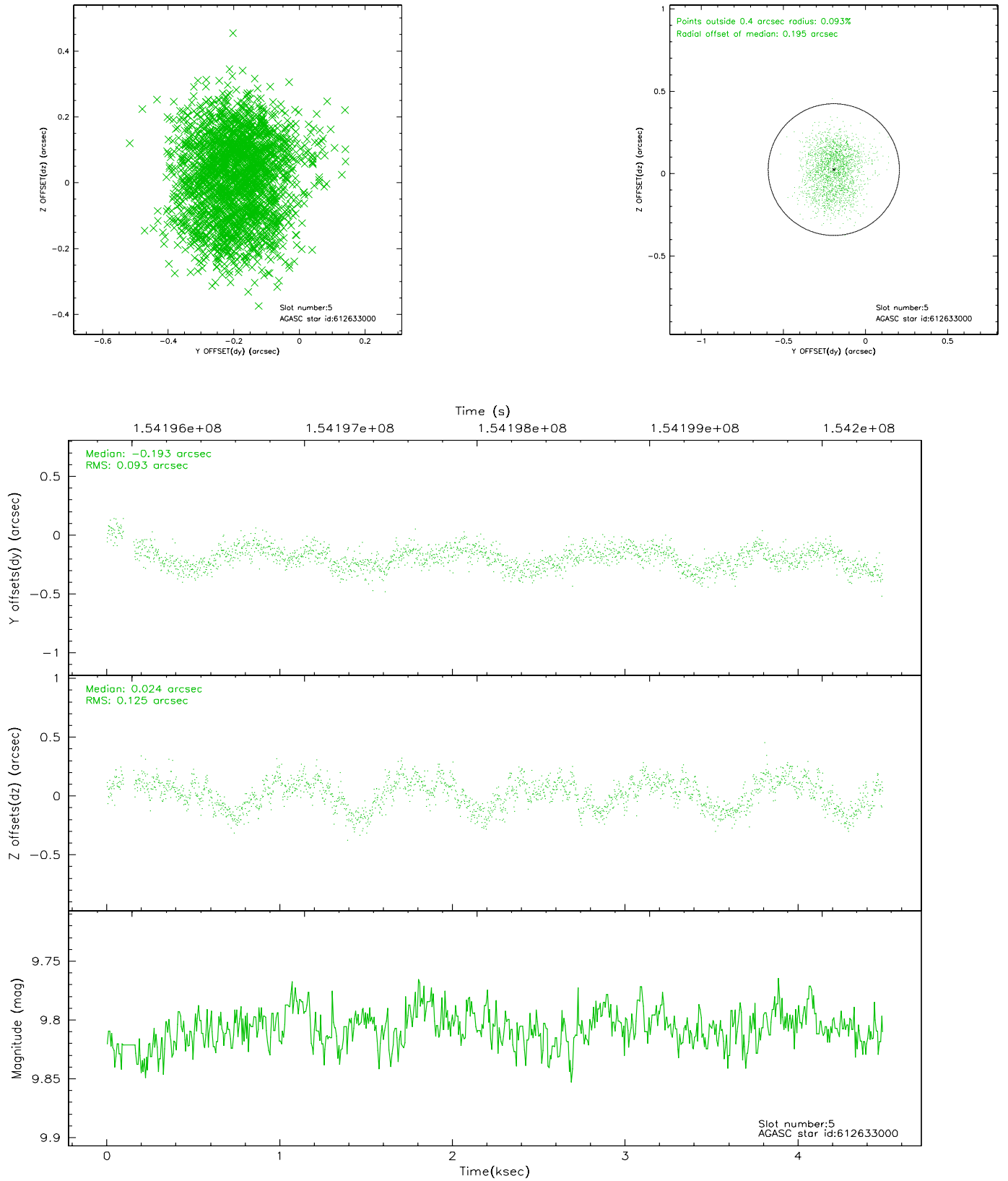
### 2.4.1 Slot 3



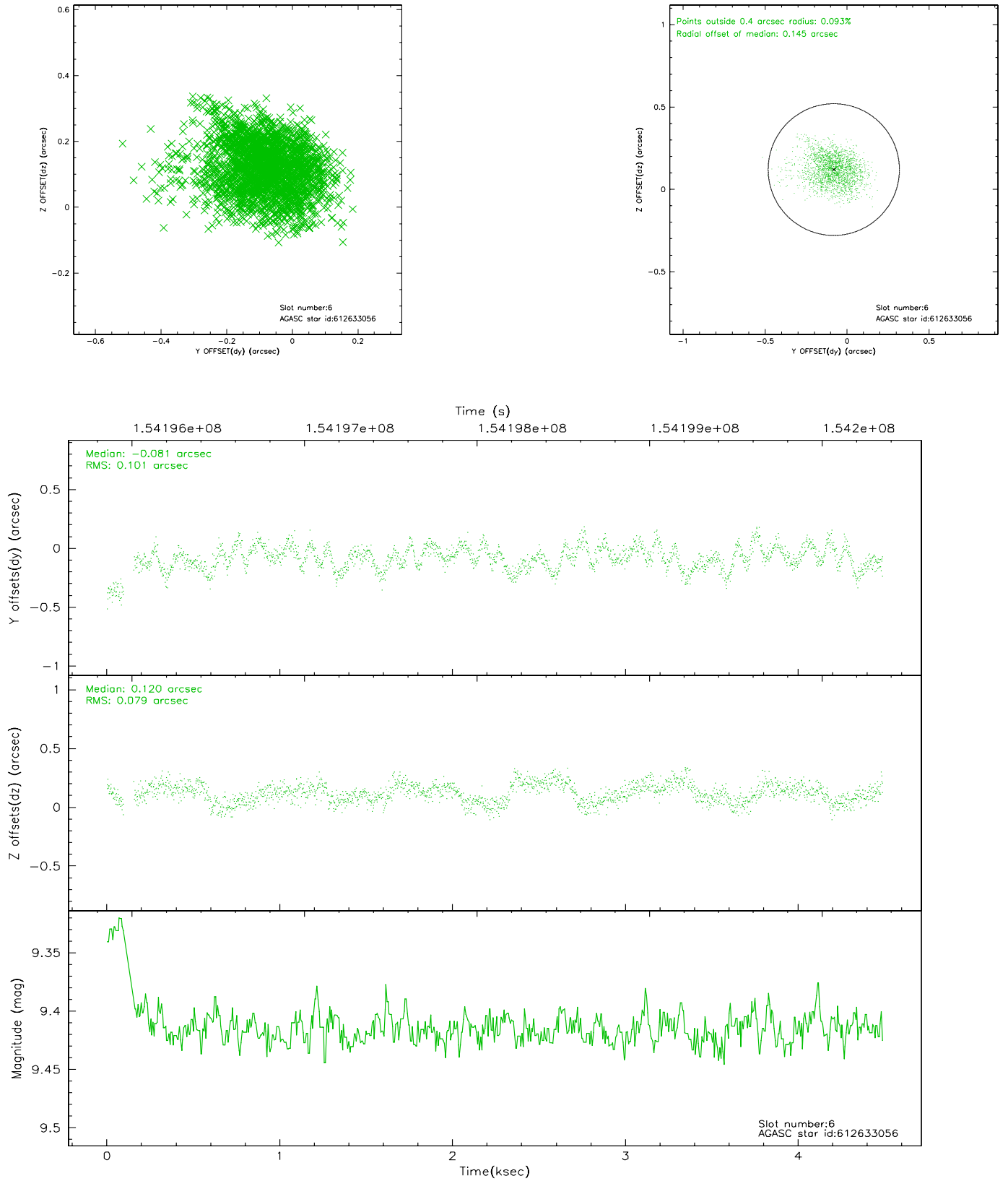
## 2.4.2 Slot 4



### 2.4.3 Slot 5

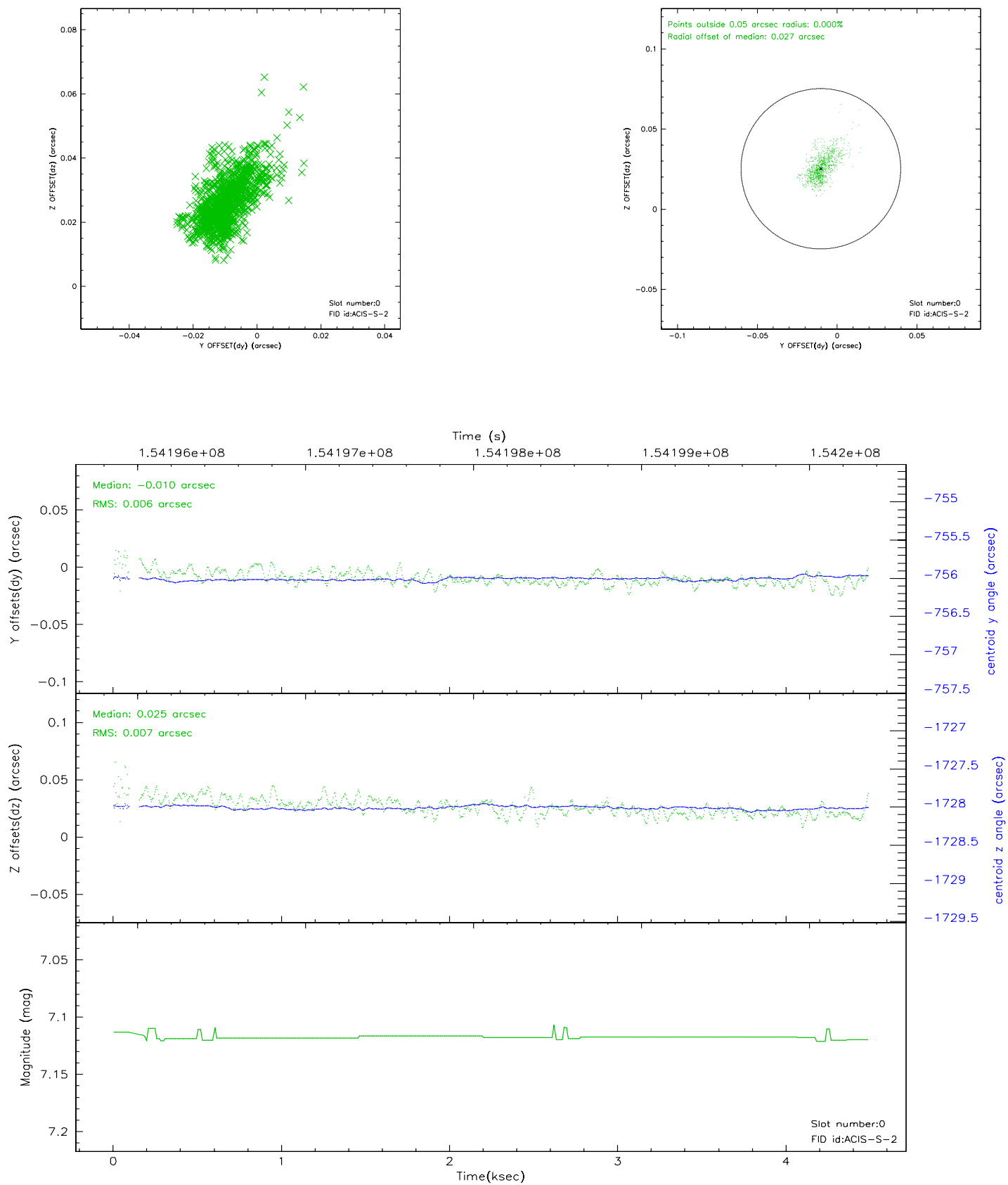


## 2.4.4 Slot 6

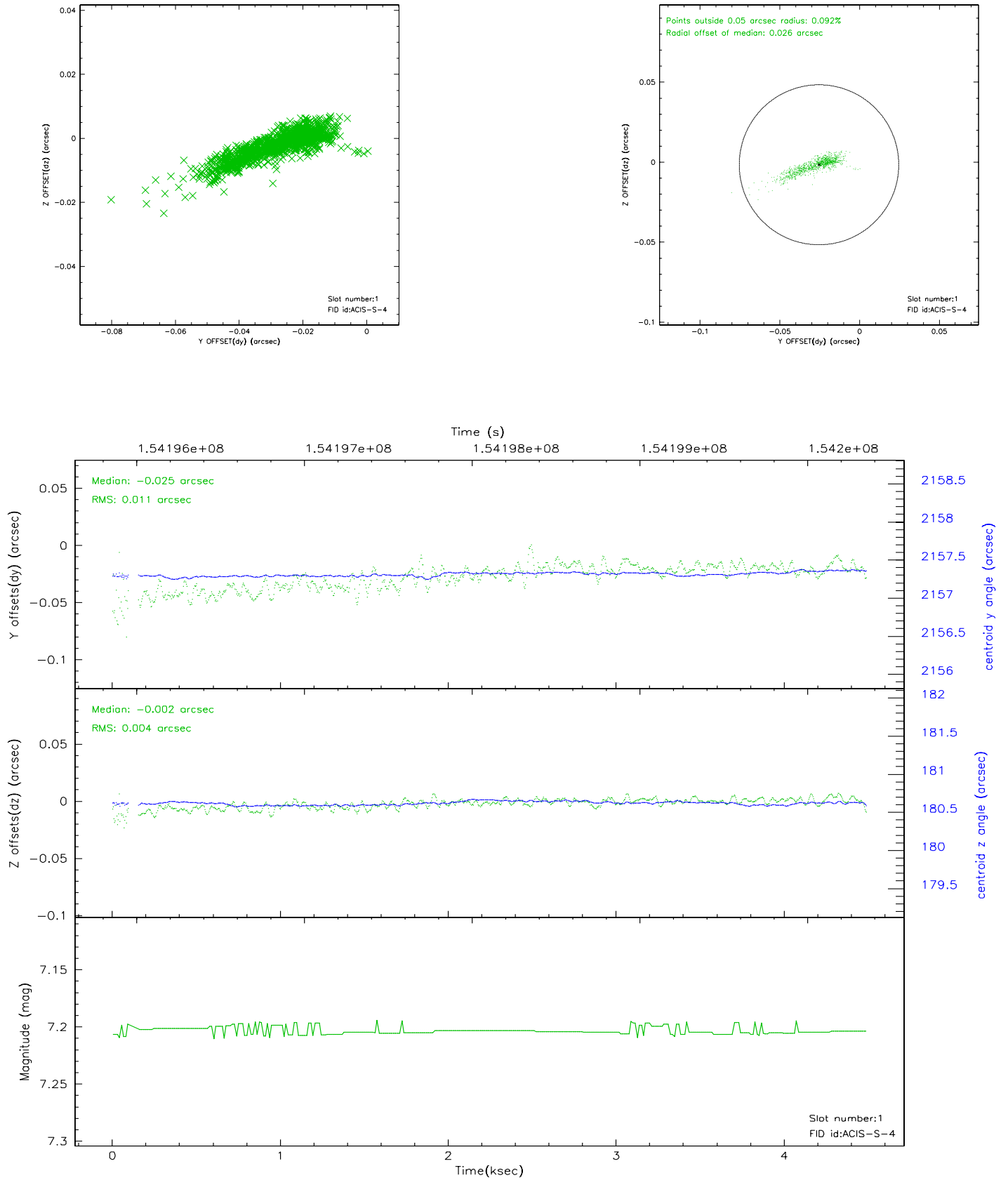


## 2.5 FID Slots

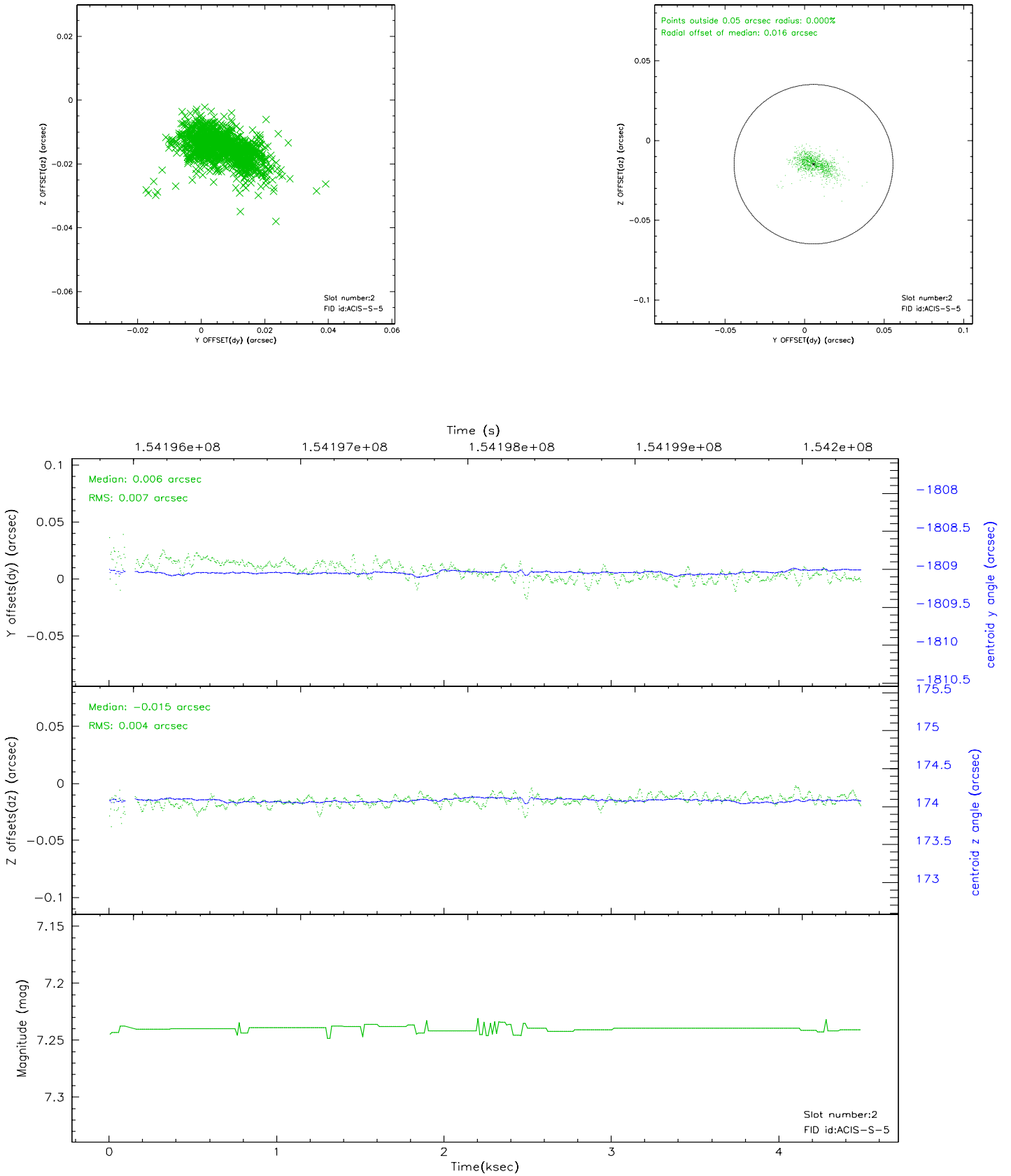
### 2.5.1 Slot 0



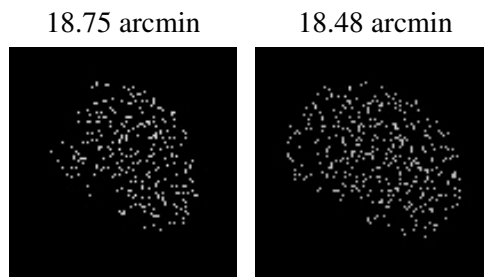
## 2.5.2 Slot 1



### 2.5.3 Slot 2



### 3 Point Sources





## A Summary

### A.1 Status

V&V Scientist	Jen Lauer
V&V Date (YYYY-MM-DD)	2006.10.10
V&V Edition	1
V&V Disposition and Status	OK
V&V Charge Time	3.548

### A.2 Comments